

»

»

:

1950	957
-------------	------------

:(1950-1948)

(1)

957

726

1950

1949

437

520

(1950 -1948)

:1

201,173	-	280,000	208,000	210,000	
363,689	-	190,000	-	320,000	
284,324	-	256,000	667,000	280,000	
849,186	520,000	726,000	875,000	810,000	
714,100	590,000	957,000	-	-	
744,150	-	-	-	-	
780,000	-	-	-	-	

:

2007	4.56
-------------	-------------

1948

.1950

957

(2)

9

10

12

58

8

19

27

%16.3

%25.4

%45.9

%23.0

%17.4

%41.7

%9.9

%52.5

%9.1

%26.7

:2

2007

31

41.7	1,903,490	17.4	330,468	10	
9.1	413,962	52.5	217,441	12	
9.9	451,467	26.7	120,383	9	
16.3	745,776	25.4	189,787	19	
23.0	1,048,125	45.9	481,180	8	
100.0	4,562,820	29.4	1,339,259	58	

%75

6

:

%44.6

%44.6

2006

%25.2

%19.4

%.67.7

%30.9

2006

:3

100	55.4	44.6	
100	69.1	30.9	
100	32.3	67.7	

%41.3

%92.3

%23.3

2006

:4

				/
44.6	92.3	23.3	41.3	
55.4	7.7	76.7	58.7	
30.9	90.3	18.8	32.1	
69.1	9.7	81.2	67.9	
67.7	93.2	84.0	53.7	
32.3	6.8	16.0	46.3	

:



%45.7

15

%45.3 %45.8

%2.8

.2006

%3.1

%41.7

15

%33.1

2000

% 33.0

2003

.2006

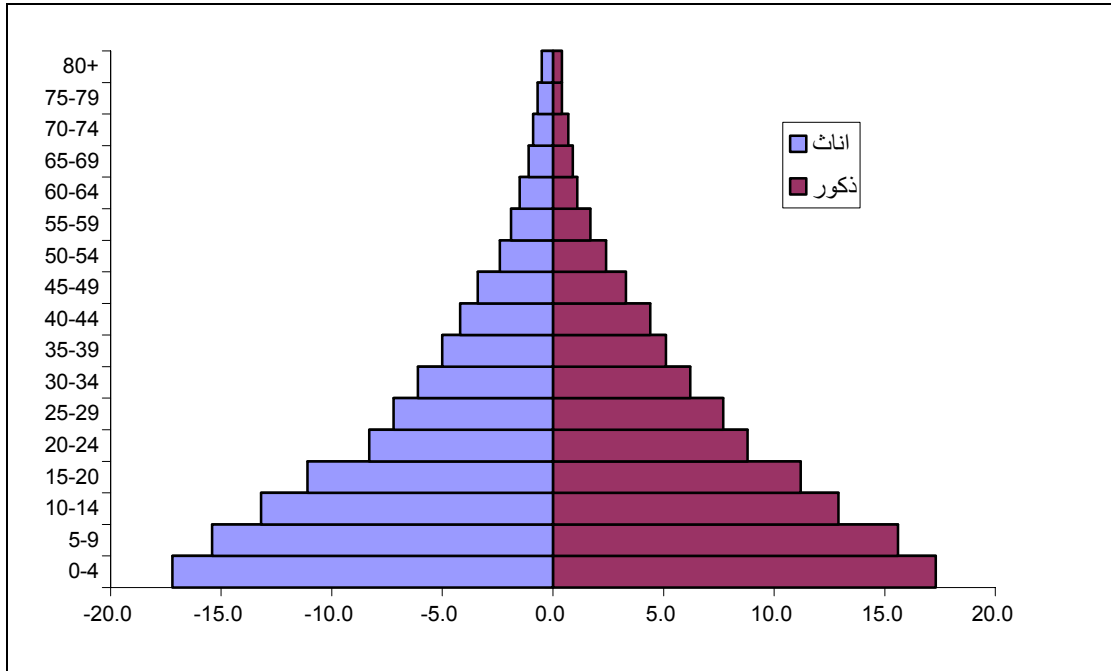
102.0 101.8

98.5

102.3

2006

:1



:



2006

2006

4.7

4.6

4.3

4.8

4.9

4.6

4.6

.2006

2.3

2.4

2000

(54-15)

:5

2006

0.7	0.8	0.6		19 - 15
1.9	1.9	1.8		24 - 20
3.3	3.4	3.2		29 - 25
4.6	4.6	4.7		34 - 30
5.6	5.5	5.6		39 - 35
6.5	6.3	6.7		44 - 40
7.2	7.1	7.2		49 - 45
7.7	7.7	7.8		54 - 50
4.7	4.6	4.8		

:

6.1	6.3
------------	------------

:

6.1 6.3 6.2 2006
 3.8 4.1 5.4 2006 .2007

8

.%28.6

%32.4

2006

:6

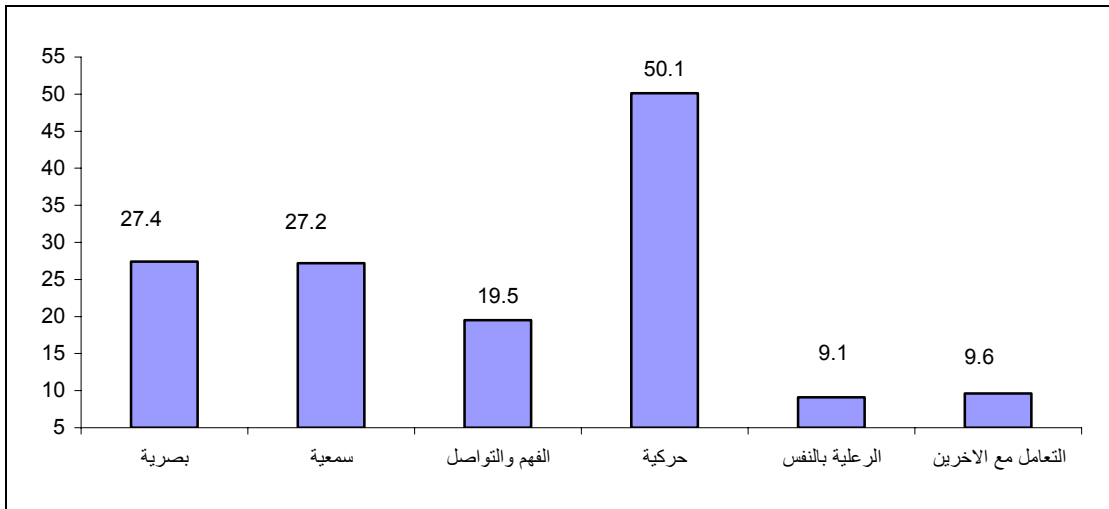
3.2	3.2	3.2	1
7.2	7.4	6.9	2
6.8	6.8	6.8	3
11.2	11.6	10.6	4
12.9	13.5	12.0	5
15.1	15.2	15.0	6
13.5	13.7	13.1	7
11.2	11.1	11.4	8
7.8	7.5	8.1	9
11.1	10.0	12.9	+10
100	100	100	
6.2	6.1	6.3	



2006
%2.6
%2.4
%45.6 %50.1
%27.1 %27.4
2005
%2.9 5,042
%3.3
%2.5
%2.4
%3.0

2006

:2



%9.8

2006

%9.6

%9.4

%3.1 %3.3 %3.6

2006

:7

			()						
90.0	0.2	0.2	0.9	0.9	0.1	1.2	3.6	2.7	
90.4	0.1	0.2	0.2	1.2	0.1	1.2	3.1	2.6	
90.2	0.2	0.2	0.2	1.1	0.1	1.2	3.3	2.6	

:

%17.6

10

. %18.3 %18.8

%29.8 (49-40)

%3.6 (19-10)

. %15.2

60

:

--

(%38.6)

(%29.3)

(%29.5)

%12

.2007

%7.0

%3.0

2006

%44.6

(%33.3)

(%43.1)

(%29.1)

(%41.2)

(%16.7)

(%42.1)

جدول 8: نسب الفقر وفقا لأنماط الاستهلاك الشهرية الحقيقية للأسر حسب حالة اللجوء لرب الأسرة، 2006

44.9	20.9	48.5	5.2	45.8	9.5	43.1	33.3	
55.1	17.0	51.5	3.6	52.2	7.5	56.9	29.1	
100.0	18.5	100.0	4.2	100.0	8.3	100.0	30.8	

%11.2 . %18.0 %47.1

%12.3 %9.6

(%58.9 %67.7) %62.5 :

.(%26.5 %21.0) %24.3

:



15 2007

15

%.6.5

%5.7

. %8.4

15

%9.2

%17.6

2000

%16.5

2006

%.25.5

2006

:

15

2007

(%90.9

%97.6) %94.3

.(%89.9

%97.0) %93.5

:

) %47.2

6

2006

%44.8) %45.2

(%47.8

%46.6

(24-6)

2000

.(%45.5

%64.2 وذلك في

2006/2005

(24-7)

،%66

2006/2005

(17-7)

مخيمات سوريا.

. %59.3 و

%55.1

،%25.5

:

) %22.6 6

2006

%28.6) %27.2

(%21.8

%23.4

(%25.7

:

:

%84.6)

%87.6

.(%89.7

%77.6 %92.4 2008

:

%53.3

2007

%77.0 (%56.5 %48.9)

%45.0 .2006 %58.1 %37.5 2000

%61.8 2000 %21.6 (%41.3 %50.3)

.2006 %40.8

:

3.6

2007

. 3.5

:

%30.0

%17.7

%25.7

%27.6

%36.7

%43.6

%44.2

%34.4