



2005

2005 /

.2005 - 1426 ©

:

.2005

.2005

:

/

- **1647** . .

(970/972) 2 240 6343 :

<http://www.pcbs.gov.ps> :

(970/972) 2 240 6340 :

diwan@pcbs.gov.ps :



2005

.1

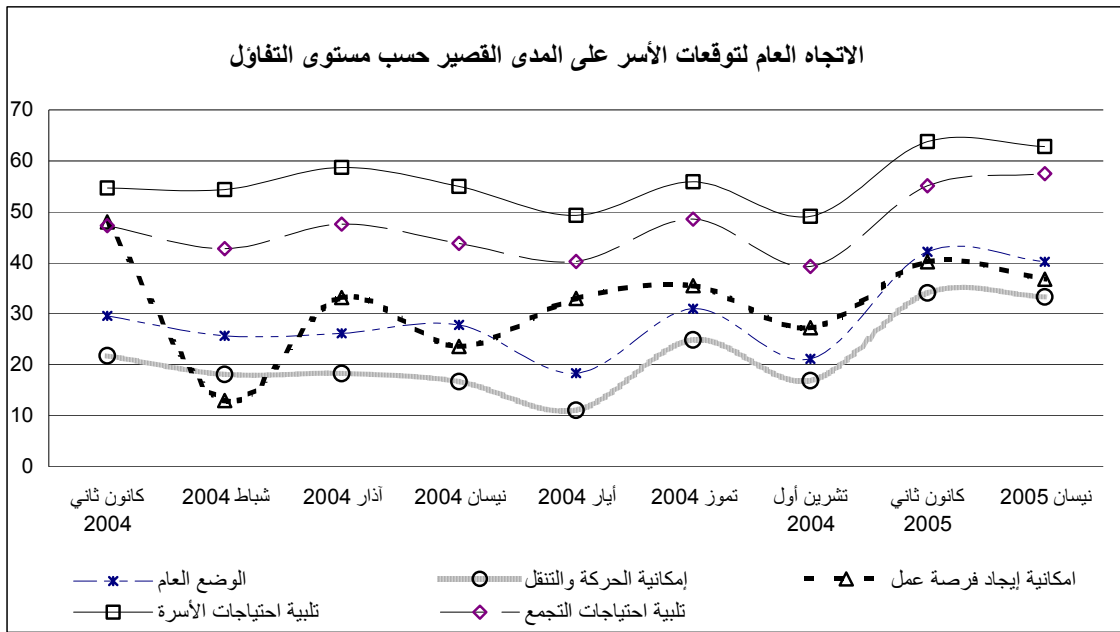
.2005

.2

2005

	2005/4/20	2005/4/2	
.(1,140	1,839) 2,979
			3,400
			:
) 2005	2005		2005
		.(4
			:
	%35.6)		%33.9
		%14.3	(%31.2
		%12.9	%15.2)
			%21.4
.(%7.1	(%19.5	%22.7)
	%4.2	%8.9)	
			:
		2005	
	.2005		
2005		%40.2	2005
	(%49.4	%34.6)

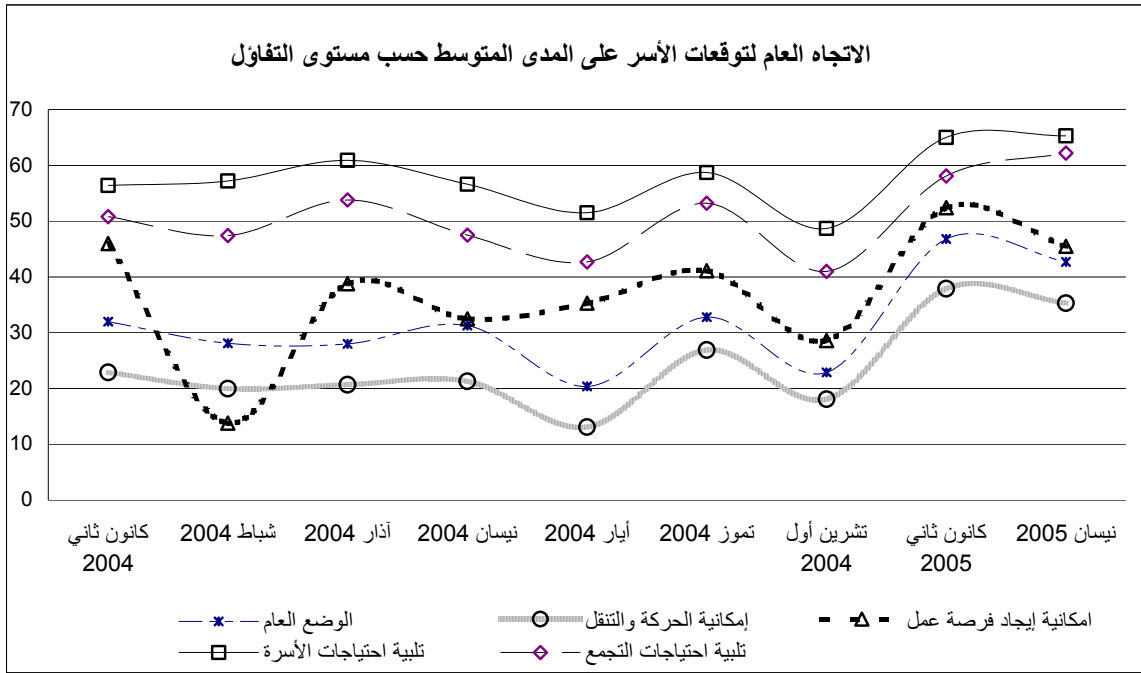
) %39.4 () %42.2
 .(%46.7
 %33.3
) %34.1 2005 (%36.9 %31.2)
 .2005 (%30.9 %36.0
 %36.8 2005
) %40.2 (%30.5 %40.6)
 .2005 (%59.1



:
 2005
 .2005
 %42.7 2005
 .(%54.2 %35.6)
 %46.8 2005
 .(%52.0 %43.7)

الاتجاه العام لتوقعات الأسر على المدى المتوسط حسب مستوى التفاؤل

2005 35.3% (37.9%) 39.4% 35.4% 40.8% 2005 (45.5%) 46.2% 45.0%



23.1% 36.1% 8.1% 21.2% 6.0% 58.0% 6.6% 16.5%

Table 1: Main Changes on the Indicators of Attitudes of Palestinians in the Palestinian Territory

Indicator	نيسان 2005 April*		كانون ثاني 2005 January*		تشرين أول 2004 *October %		تموز 2004 *July %		أيار 2004 May*(%)		نيسان 2004 April* (%)		آذار 2004 *March (%)		شباط 2004 *February (%)		كانون ثاني 2004 *January (%)		
	خلال الستة شهور القادمة Next six Months	خلال الشهر القادم Next Month	خلال الستة شهور القادمة Next six Months	خلال الشهر القادم Next Month	خلال الستة شهور القادمة Next six Months	خلال الشهر القادم Next Month	خلال الستة شهور القادمة Next six Months	خلال الشهر القادم Next Month	خلال الستة شهور القادمة Next six Months	خلال الشهر القادم Next Month	خلال الستة شهور القادمة Next six Months	خلال الشهر القادم Next Month	خلال الستة شهور القادمة Next six Months	خلال الشهر القادم Next Month	خلال الستة شهور القادمة Next six Months	خلال الشهر القادم Next Month	خلال الستة شهور القادمة Next six Months	خلال الشهر القادم Next Month	
Percentage of households who expect better life	42.7	40.2	46.8	42.2	22.9	21.2	32.8	31.0	20.4	18.4	31.3	27.8	28.0	26.2	28.1	25.7	32.0	29.6	نسبة الأسر المقتضية بتحسين الوضع العام للأسرة
Percentage of households who expect better mobility (less mobility restrictions)	35.3	33.3	37.9	34.1	18.1	16.9	26.9	24.9	13.1	11.1	21.3	16.7	20.7	18.3	20.0	18.1	22.9	21.8	نسبة الأسر المقتضية بتحسين إمكانية الحركة والتنقل
Percentage of unemployed persons who are optimistic to find a job	45.5	36.8	52.4	40.2	28.6	27.3	41.1	35.5	35.3	33.0	32.5	23.6	38.8	33.2	13.8	13.0	46.0	48.0	نسبة المتقاعدين المقتضين بإيجاد فرصة عمل
Percentage of persons who are optimistic to meet household basic needs	65.3	62.8	65.0	63.8	48.7	49.1	58.7	55.9	51.5	49.3	56.6	55.0	60.9	58.7	57.2	54.4	56.4	54.7	نسبة المتقاعدين بتلبية احتياجات الأسرة
Percentage of persons who are optimistic to meet the community basic needs	62.2	57.5	58.1	55.1	41.0	39.3	53.2	48.6	42.7	40.3	47.5	43.8	53.8	47.6	47.4	42.8	50.8	47.3	نسبة المتقاعدين بتلبية احتياجات التجمع السكاني

* Data Collection for January 2004 took place during 3/1-26/1/2004.

.2004/1/26-1/3

2004

*

* Data Collection for February 2004 took place during 8/2-20/2/2004.

.2004/2/20-2/8

2004

*

* Data Collection for March 2004 took place during 1/3-28/3/2004.

.2004/3/28-3/1

2004

*

* Data Collection for April 2004 took place during 6/4-20/4/2004.

2004/4/20-4/6

2004

*

* Data Collection for May 2004 took place during 6/5-20/5/2004.

2004/5/20-5/6

2004

*

* Data Collection for July 2004 took place during 2/7-22/7/2004.

2004/7/22-7/2

2004

*

* Data Collection for October 2004 took place during 2/10-22/10/2004.

2004/10/22-10/2

2004

*

* Data Collection for January 2005 took place during 2/1-22/1/2005.

2005/1/22-1/2

2005

*

* Data Collection for April 2005 took place during 2/4-20/4/2005

2005/4/20-4/2

2005

*

Table 2: Main Changes on the Indicators of Attitudes of Palestinians in the West Bank

Indicator	نيسان 2005 April*		كانون ثاني 2005 January*		تشرين أول 2004 *October %		تموز 2004 *July %		أيار 2004 May*(%)		نيسان 2004 April* (%)		آذار 2004 *March (%)		شباط 2004 *February (%)		كانون ثاني 2004 *January (%)		
	خلال الستة شهور القادمة Next six Months	خلال الشهر القادم Next Month	خلال الستة شهور القادمة Next six Months	خلال الشهر القادم Next Month	خلال الستة شهور القادمة Next six Months	خلال الشهر القادم Next Month	خلال الستة شهور القادمة Next six Months	خلال الشهر القادم Next Month	خلال الستة شهور القادمة Next six Months	خلال الشهر القادم Next Month	خلال الستة شهور القادمة Next six Months	خلال الشهر القادم Next Month	خلال الستة شهور القادمة Next six Months	خلال الشهر القادم Next Month	خلال الستة شهور القادمة Next six Months	خلال الشهر القادم Next Month	خلال الستة شهور القادمة Next six Months	خلال الشهر القادم Next Month	
Percentage of households who expect better life	35.6	34.6	43.7	39.4	19.9	19.2	31.2	32.5	18.2	16.7	28.3	27.2	24.5	24.2	24.3	24.0	28.1	28.0	نسبة الأسر المتفائلة بتحسن الوضع العام للأسرة
Percentage of households who expect better mobility (less mobility restrictions)	32.0	31.2	39.4	36.0	13.9	14.2	30.4	31.7	13.5	13.1	22.9	21.6	23.0	24.2	20.6	21.8	25.7	25.2	نسبة الأسر المتفائلة بتحسن إمكانية الحركة والتنقل
Percentage of unemployed persons who are optimistic to find a job	45.0	40.6	54.0	50.7	28.5	28.1	37.5	32.4	29.9	28.0	32.4	25.8	34.6	32.8	12.1	11.8	43.9	41.9	نسبة المتعطلين المتفائلين بإيجاد فرصة عمل
Percentage of persons who are optimistic to meet household basic needs	61.1	59.6	61.0	59.4	46.0	46.7	54.5	54.0	48.5	45.0	52.0	51.6	60.3	60.4	53.1	52.4	55.8	56.4	نسبة المتفائلين بتلبية احتياجات الأسرة
Percentage of persons who are optimistic to meet the community basic needs	55.5	52.0	50.2	46.7	38.5	37.3	47.7	45.1	38.0	38.1	40.9	39.7	49.8	47.6	40.9	39.0	46.8	45.7	نسبة المتفائلين بتلبية احتياجات التجمع السكاني

* Data Collection for January 2004 took place during 3/1-26/1/2004.

.2004/1/26-1/3

2004

*

* Data Collection for February 2004 took place during 8/2-20/2/2004.

.2004/2/20-2/8

2004

*

* Data Collection for March 2004 took place during 1/3-28/3/2004.

.2004/3/28-3/1

2004

*

* Data Collection for April 2004 took place during 6/4-20/4/2004.

2004/4/20-4/6

2004

*

* Data Collection for May 2004 took place during 6/5-20/5/2004.

2004/5/20-5/6

2004

*

* Data Collection for July 2004 took place during 2/7-22/7/2004.

2004/7/22-7/2

2004

*

* Data Collection for October 2004 took place during 2/10-22/10/2004.

2004/10/22-10/2

2004

*

* Data Collection for January 2005 took place during 2/1-22/1/2005.

2005/1/22-1/2

2005

*

* Data Collection for April 2005 took place during 2/4-20/4/2005

2005/4/20-4/2

2005

*

:3

Table 3: Main Changes on the Indicators of Attitudes of Palestinians in Gaza Strip

Indicator	نيسان 2005 April*		كانون ثاني 2005 January*		تشرين أول 2004 *October %		تموز 2004 *July %		أيار 2004 May*(%)		نيسان 2004 April* (%)		آذار 2004 *March (%)		شباط 2004 *February (%)		كانون ثاني 2004 *January (%)		
	خلال الستة شهور القادمة Next six Months	خلال الشهر القادم Next Month	خلال الستة شهور القادمة Next six Months	خلال الشهر القادم Next Month	خلال الستة شهور القادمة Next six Months	خلال الشهر القادم Next Month	خلال الستة شهور القادمة Next six Months	خلال الشهر القادم Next Month	خلال الستة شهور القادمة Next six Months	خلال الشهر القادم Next Month	خلال الستة شهور القادمة Next six Months	خلال الشهر القادم Next Month	خلال الستة شهور القادمة Next six Months	خلال الشهر القادم Next Month	خلال الستة شهور القادمة Next six Months	خلال الشهر القادم Next Month	خلال الستة شهور القادمة Next six Months	خلال الشهر القادم Next Month	
Percentage of households who expect better life	54.2	49.4	52.0	46.7	27.3	24.1	35.8	28.2	24.3	21.3	36.8	29.0	34.6	30.1	35.8	29.1	38.3	33.0	نسبة الأسر المقتضية بتحسين الوضع العام للأسرة
Percentage of households who expect better mobility (less mobility restrictions)	40.8	36.9	35.4	30.9	24.4	20.9	20.5	12.3	12.6	7.3	18.4	7.4	16.1	7.3	18.6	10.7	17.5	15.4	نسبة الأسر المقتضية بتحسين إمكانية الحركة والانتقل
Percentage of unemployed persons who are optimistic to find a job	46.2	30.5	49.7	59.1	28.7	26.3	46.2	39.9	44.2	41.4	33.0	17.9	47.1	33.9	17.3	15.0	50.4	60.6	نسبة المتعطلين المقتضين بإيجاد فرصة عمل
Percentage of persons who are optimistic to meet household basic needs	72.2	68.0	71.3	70.9	52.8	52.8	66.4	59.3	57.0	50.7	65.4	61.2	61.7	55.4	65.5	58.2	57.4	51.7	نسبة المقتضين بتلبية احتياجات الأسرة
Percentage of persons who are optimistic to meet the community basic needs	71.5	65.8	70.8	68.6	44.4	41.9	62.8	54.5	50.7	44.1	59.2	51.1	60.6	47.6	59.1	49.4	58.0	50.1	نسبة المقتضين بتلبية احتياجات التجمع السكاني

* Data Collection for January 2004 took place during 3/1-26/1/2004.

* Data Collection for February 2004 took place during 8/2-20/2/2004.

* Data Collection for March 2004 took place during 1/3-28/3/2004.

* Data Collection for April 2004 took place during 6/4-20/4/2004.

* Data Collection for May 2004 took place during 6/5-20/5/2004.

* Data Collection for July 2004 took place during 2/7-22/7/2004.

* Data Collection for October 2004 took place during 2/10-22/10/2004.

* Data Collection for January 2005 took place during 2/1-22/1/2005.

* Data Collection for April 2005 took place during 2/4-20/4/2005

2004/1/26-1/3

2004

2004/2/20-2/8

2004

2004/3/28-3/1

2004

2004/4/20-4/6

2004

2004/5/20-5/6

2004

2004/7/22-7/2

2004

2004/10/22-10/2

2004

2005/1/22-1/2

2005

2005/4/20-4/2

2005

*

*

*

*

*

*

*

*

*

(2005)

:4

Table 4: The Attitude of Palestinians Toward the Overall “Quality of Life” Enjoyed by the Households Today Compared with One Month Ago by Region (April, 2005)

Attitude	Gaza Strip	West Bank	Palestinian Territory	
	%	%	%	
A lot better today	2.2	3.0	2.7	/
Somewhat better today	10.7	12.2	11.6	
About the same/ Unchanged	55.9	49.0	51.6	
Somewhat worse today	21.3	28.4	25.7	
A lot worse today	9.9	7.2	8.2	
Don't know	-	0.2	0.2	
Total	100.0	100.0	100.0	

(2005)

:5

Table 5: The Attitude of Palestinians Toward the Overall “Quality of Life” Enjoyed by the Households in the Future Compared with Today and Region, (April, 2005)

Attitude	Region and Time Period						
	Gaza Strip		West Bank		Palestinian Territory		
	Next Six Months %	Next Month %	Next Six Months %	Next Month %	Next Six Months %	Next Month %	
A lot better from now	9.9	7.8	3.8	2.5	6.1	4.5	/
Somewhat better from now	44.3	41.6	31.8	32.1	36.6	35.7	
About the same /unchanged	28.0	33.6	30.7	35.0	29.6	34.5	
Somewhat worse from now	7.2	9.5	17.5	19.0	13.6	15.4	
A lot worse from now	5.6	4.7	8.1	5.8	7.2	5.4	
Don't know	5.0	2.8	8.1	5.6	6.9	4.5	
Total	100.0	100.0	100.0	100.0	100.0	100.0	

(2005)

:6

Table 6: The Attitude of Palestinians Toward the Overall “Quality of Life” Enjoyed by the Households in the Future by Selected Characteristics (April, 2005)

Characteristics	Time Period				
	Next Six Months %		Next Month %		
	Worse %	Better %	Worse %	Better %	
Age Group					
15-24	18.6	18.5	43.0	41.4	24-15
25-44	20.7	20.6	44.3	41.9	44-25
45+	24.8	25.2	38.3	34.6	+45
Refugee status					
Refugee	17.6	18.1	47.9	44.3	
Non - Refugee	23.2	22.9	38.7	37.1	
Education					
Less than Preparatory	23.3	23.8	40.5	37.9	
Preparatory - secondary	19.8	19.7	43.9	41.6	-
Diploma and above	16.8	16.1	44.0	41.2	

(2005)

:7

Table 7: Distribution of Palestinian Households by the Level of Disturbance Caused by Restrictions on Mobility Imposed by Israeli Military Forces and Region, (April, 2005)

Level of Disturbance	Region and Time Period						
	Gaza Strip		West Bank		Palestinian Territory		
	Past Six Months %	Past Month %	Past Six Months %	Past Month %	Past Six Months %	Past Month %	
A lot	35.1	21.5	26.7	22.1	30.0	21.9	
A little	22.4	22.3	31.8	30.5	28.2	27.3	
Not at all	41.9	54.6	38.9	45.0	40.0	48.7	
Don't know	0.6	1.6	2.6	2.4	1.8	2.1	
Total	100.0	100.0	100.0	100.0	100.0	100.0	

(2005)

:8

Table 8: Distribution of Palestinian Households by the Need of Medical Care for Households and Region, (April, 2005)

Need for medical care	Region and Period						
	Gaza Strip		West Bank		Palestinian Territory		
	Past Six Months %	Past Month %	Past Six Months %	Past Month %	Past Six Months %	Past Month %	
Yes	78.0	70.1	61.2	56.8	67.6	61.8	
No	22.0	29.8	37.8	42.7	31.8	37.8	
Don't know	-	0.1	1.0	0.5	0.6	0.4	
Total	100.0	100.0	100.0	100.0	100.0	100.0	

(2005)

:9

Table 9: Distribution of Palestinian Households by Ability for Household Member to Access Necessary Medical Care and Region, (April, 2005)

Ability to access medical care	Region and Time Period						
	Gaza Strip		West Bank		Palestinian Territory		
	Past Six Months %	Past Month %	Past Six Months %	Past Month %	Past Six Months %	Past Month %	
Impossible	0.7	0.7	0.7	0.8	0.7	0.8	
Very difficult	2.7	2.2	7.5	6.7	5.5	4.8	
Difficult	11.6	9.8	13.5	13.2	12.6	11.8	
Few problems	22.8	23.3	24.6	23.5	23.8	23.4	
No problem at all	62.1	64.0	53.7	55.8	57.4	59.2	
Don't know	0.1	-	-	-	0.0	0.0	
Total	100.0	100.0	100.0	100.0	100.0	100.0	

(2005)

:10

Table 10: Distribution of Palestinian Households by Ability of Household Member to Reach Work Place and Region (April, 2005)

Ability to reach place of work	Region and Period					
	Gaza Strip		West Bank		Palestinian Territory	
	Past Six Months %	Past Month %	Past Six Months %	Past Month %	Past Six Months %	Past Month %
Impossible	1.9	0.9	1.8	2.2	1.8	1.7
Very difficult	3.9	2.5	7.1	5.8	6.0	4.7
Difficult	10.0	4.4	15.5	12.7	13.6	9.8
Few problems	12.3	10.8	24.0	23.0	19.9	18.7
No problem at all	71.5	81.3	50.8	55.6	58.1	64.7
Don't know	0.4	0.1	0.8	0.7	0.6	0.4
Total	100.0	100.0	100.0	100.0	100.0	100.0

(2005)

:11

Table 11: Distribution of Palestinian Households by Ability to Cultivate Land and Region (April, 2005)

Ability to cultivate land	Region and Time Period					
	Gaza Strip		West Bank		Palestinian Territory	
	Past Six Months %	Past Month %	Past Six Months %	Past Month %	Past Six Months %	Past Month %
Impossible	14.6	12.4	2.4	3.0	4.8	4.8
Very difficult	15.2	14.5	3.5	2.6	5.8	5.0
Difficult	11.0	6.2	7.3	5.9	8.1	6.0
Few problems	8.5	11.5	16.8	16.8	15.2	15.8
No problem at all	49.9	54.6	69.2	70.9	65.3	67.6
Don't know	0.8	0.8	0.8	0.8	0.8	0.8
Total	100.0	100.0	100.0	100.0	100.0	100.0

(2005)

Table 12: The Attitude of Palestinians Toward the Ability of Household Members to Move Around this Week Compared to the Last Week by Region (April, 2005)

Ability for household members to move	Region and Time Period		
	Gaza Strip %	West Bank %	Palestinian Territory %
Significantly easier this week	5.4	5.9	5.7
Somewhat easier this week	14.1	16.8	15.7
About the same/ Unchanged	75.7	67.3	70.5
Somewhat harder this week	3.8	7.1	5.8
Significantly harder this week	0.4	1.8	1.3
Don't know	0.6	1.1	1.0
Total	100.0	100.0	100.0

(2005)

Table 13: The Attitude of Palestinians Toward the Ability of Household Members to Move Around Next Month, Next Six Months Compared to this Week and Region, (April, 2005)

The ability of household members to move	Region and Time Period					
	Gaza Strip		West Bank		Palestinian Territory	
	Next Six Months %	Next Month %	Next Six Months %	Next Month %	Next Six Months %	Next Month %
Significantly easier	11.2	8.9	3.3	3.3	6.3	5.4
Somewhat easier	29.6	28.0	28.7	27.9	29.0	27.9
About the same	56.1	59.7	43.6	49.0	48.4	53.1
Somewhat harder	2.3	2.6	8.8	9.6	6.3	7.0
Significantly harder	0.4	0.3	7.1	4.3	4.6	2.8
Don't know	0.4	0.5	8.5	5.9	5.4	3.8
Total	100.0	100.0	100.0	100.0	100.0	100.0

(2005)

()

:14

Table 14: The Attitude of Palestinians Toward the Ability to Find a Job by Region, (April, 2005)

The Ability to find a job	Region and Time Period						()
	Gaza Strip		West Bank		Palestinian Territory		
	Next Six Months %	Next Month %	Next Six Months %	Next Month %	Next Six Months %	Next Month %	
Very optimistic/ very likely	2.1	0.9	5.8	4.5	4.4	3.2	()
Somewhat optimistic/ likely	44.1	29.6	39.2	36.1	41.1	33.6	()
Neither optimistic/ nor pessimistic	14.3	22.6	15.4	21.4	15.0	21.9	()
Somewhat pessimistic/ unlikely	12.4	16.1	19.7	20.4	16.9	18.8) ()
Very pessimistic/ very unlikely	25.6	29.2	13.8	13.6	18.3	19.6) ()
Don't know	1.5	1.6	6.1	4.0	4.3	2.9	()
Total	100.0	100.0	100.0	100.0	100.0	100.0	

(2005)

:15

Table 15: Distribution of Palestinian Households by the Most Important Need for Household and Region, (April, 2005)

Most important need	Gaza Strip %		West Bank %		Palestinian Territory %		()
	Second Need	First Need	Second Need	First Need	Second Need	First Need	
	Food	19.0	25.5	23.4	42.6	21.7	
Clothes	10.7	0.5	10.8	0.4	10.7	0.5	
Education	11.9	9.2	16.0	7.4	14.5	8.1	
Employment	11.1	32.8	11.5	17.2	11.3	23.1	
Financial assistance	36.4	22.3	18.2	20.5	25.1	21.2	
Health	6.3	3.0	16.7	7.9	12.7	6.0	
Housing	3.7	5.5	3.2	3.1	3.4	4.0	
Entertainment activities	0.6	1.1	0.1	0.2	0.3	0.6	
Other	0.3	0.1	0.1	0.7	0.3	0.4	
Total	100.0	100.0	100.0	100.0	100.0	100.0	

(تيسان 2005)

:16

Table 16: Distribution of Palestinian Households by the Most Important Need of Locality and Region, (April, 2005)

The Most Important Needs	Gaza Strip %	West Bank %	Palestinian Territory %
Create jobs	75.7	47.2	58.0
Health Services	3.1	8.7	6.6
Food assistances	3.9	5.6	4.9
Education Services	1.4	5.2	3.7
Infrastructure Project	13.9	18.0	16.5
No Need	1.8	12.3	8.3
Don't know	0.2	3.0	2.0
Total	100.0	100.0	100.0

:17

(2005)

Table 17: Distribution of Palestinians by their Knowledge about Development Projects Conducted in the Community by Donors and Region, (April, 2005)

Knowledge	Gaza Strip %	West Bank %	Palestinian Territory %
Yes	15.4	18.7	17.4
No	82.1	72.9	76.4
Don't know	2.5	8.4	6.2
Total	100.0	100.0	100.0

(2005)

:18

Table 18: The Attitude of Palestinians Toward the Satisfaction on the Development Projects Conducted in the Community and Region, (April, 2005)

Stratification level	Gaza Strip %	West Bank %	Palestinian Territory %
Very satisfied	32.0	32.0	32.0
Somewhat satisfied	41.4	47.6	45.5
Somewhat unsatisfied	14.8	10.2	11.7
Very unsatisfied	11.2	8.9	9.7
Don't know	0.6	1.3	1.1
Total	100.0	100.0	100.0

(2005)

Table 19: Distribution of Palestinians by the Most Important Infrastructure Needs in the Community and Region, (April, 2005)

The most important needs	Gaza Strip %	West Bank %	Palestinian Territory %	
Electricity	7.3	6.8	7.0	
Roads	29.3	16.0	21.1	
Sewage disposal	19.3	17.6	18.2	
Water supply	7.8	9.4	8.8	
Schools	4.8	8.3	7.0	
Health clinics / hospitals	10.2	13.5	12.3	
No Need	19.5	24.6	22.6	
Don't know	1.8	3.9	3.0	
Total	100.0	100.0	100.0	