



**2005**

**2005 /**

.2005 - 1426 ©

:

**.2005**

*.2005*

-

:

/

- **1647** . .

(970/972) 2 240 6343 :

<http://www.pcbs.gov.ps> :

(970/972) 2 240 6340 :

[diwan@pcbs.gov.ps](mailto:diwan@pcbs.gov.ps) :



**2005**

.1

.2005

.2

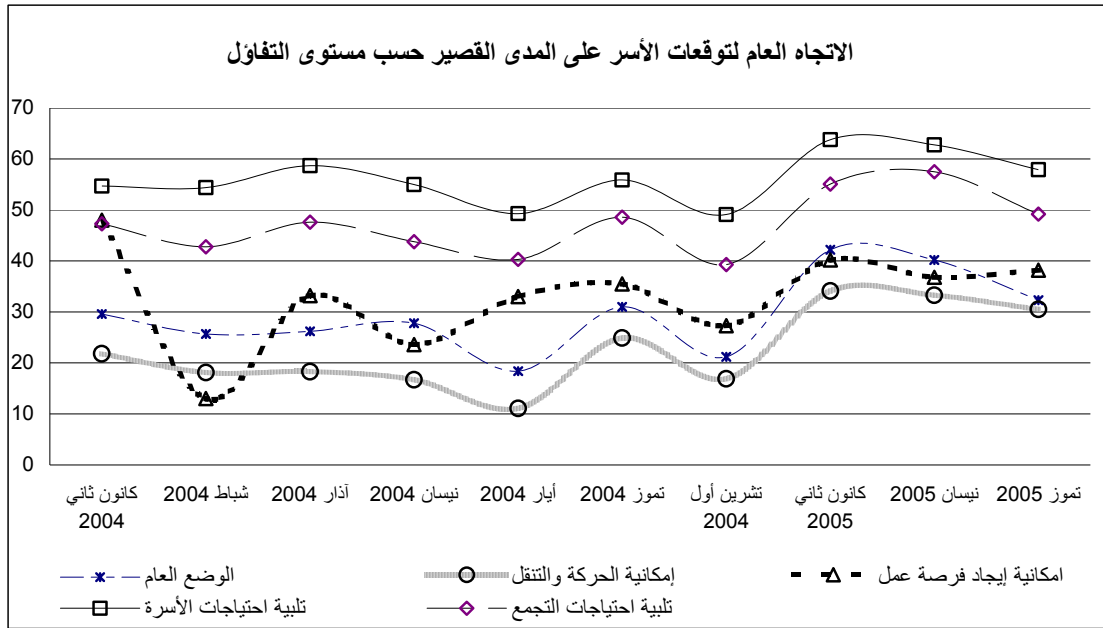
**2005**

	2005/7/30	2005/7/10	
1,158	2,035 )	3,193	3,436
			.(
			:
	%36.4)		%38.2
		%13.3	( %41.3
		.( %13.8	%12.9)
			%17.8
%9.1	%11.3 (	%24.2	%14.2)
	%12.6)		
			.(
			:
			2005
	.2005		
		%32.3 2005	
2005	(	%44.2	%25.5 )
	%34.6 )		%40.2
			.( %49.4
			%30.5
) %33.1 2005	(	%45.4	%22.0 )
	.2005	(	%36.9 %31.2

الاتجاه العام لتوقعات الأسر على المدى القصير حسب مستوى التفاؤل

2005 38.2% ( 37.4% ) 36.8% ) 40.6%

2005 ( 30.5% )



2005

2005

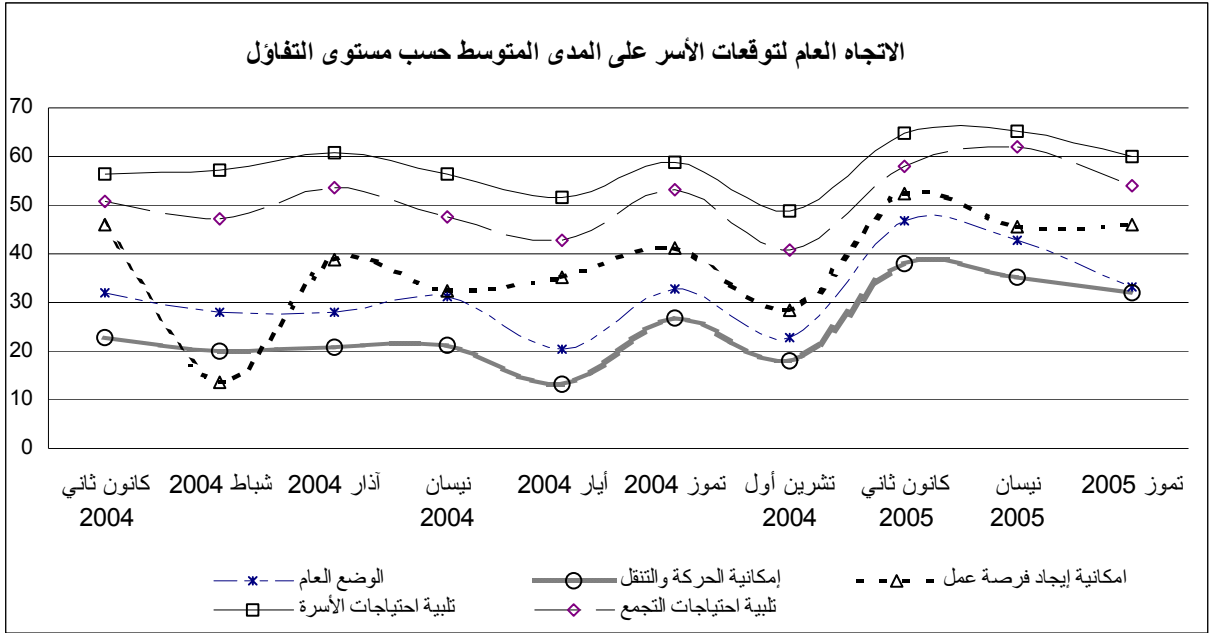
2005 33.2% ( 24.3% ) 48.9%

2005 42.7% ( 35.6% ) 54.2%

2005 32.2%

22.4%) 40.8% ( 32.0% ) 35.3% ( 53.0% ) 2005 ( 45.9%

53.3% ( 40.1% )



:

%18.1	%43.9
%10.0	%14.0
.	%6.8
.	:
%8.2	%18.2
.	%59.1

Table 1: Main Changes on the Indicators of Attitudes of Palestinians in the Palestinian Territory

Indicator	تموز 2005 July*		نيسان 2005 April*		كانون ثاني 2005 January*		تشرين أول 2004 *October %		تموز 2004 *July %		أيار 2004 May*(%)		نيسان 2004 April* (%)		آذار 2004 *March (%)		شباط 2004 *February (%)		
	خلال الستة شهور القادمة Next six Months	خلال الشهر القادم Next Month	خلال الستة شهور القادمة Next six Months	خلال الشهر القادم Next Month	خلال الستة شهور القادمة Next six Months	خلال الشهر القادم Next Month	خلال الستة شهور القادمة Next six Months	خلال الشهر القادم Next Month	خلال الستة شهور القادمة Next six Months	خلال الشهر القادم Next Month	خلال الستة شهور القادمة Next six Months	خلال الشهر القادم Next Month	خلال الستة شهور القادمة Next six Months	خلال الشهر القادم Next Month	خلال الستة شهور القادمة Next six Months	خلال الشهر القادم Next Month	خلال الستة شهور القادمة Next six Months	خلال الشهر القادم Next Month	
Percentage of households who expect better life	33.2	32.3	42.7	40.2	46.8	42.2	22.9	21.2	32.8	31.0	20.4	18.4	31.3	27.8	28.0	26.2	28.1	25.7	نسبة الأسر المفائلة بتحسن الوضع العام للأسرة
Percentage of households who expect better mobility (less mobility restrictions)	32.2	30.5	35.3	33.3	37.9	34.1	18.1	16.9	26.9	24.9	13.1	11.1	21.3	16.7	20.7	18.3	20.0	18.1	نسبة الأسر المفائلة بتحسن إمكانية الحركة والتنقل
Percentage of unemployed persons who are optimistic to find a job	45.9	38.2	45.5	36.8	52.4	40.2	28.6	27.3	41.1	35.5	35.3	33.0	32.5	23.6	38.8	33.2	13.8	13.0	نسبة المتعطلين المفائلين بإيجاد فرصة عمل
Percentage of persons who are optimistic to meet household basic needs	59.9	57.9	65.3	62.8	65.0	63.8	48.7	49.1	58.7	55.9	51.5	49.3	56.6	55.0	60.9	58.7	57.2	54.4	نسبة المفائلين بتلبية احتياجات الأسرة
Percentage of persons who are optimistic to meet the community basic needs	54.0	49.2	62.2	57.5	58.1	55.1	41.0	39.3	53.2	48.6	42.7	40.3	47.5	43.8	53.8	47.6	47.4	42.8	نسبة المفائلين بتلبية احتياجات التجمع السكاني

\* Data Collection for February 2004 took place during 8/2-20/2/2004.

\* Data Collection for March 2004 took place during 1/3-28/3/2004.

\* Data Collection for April 2004 took place during 6/4-20/4/2004.

\* Data Collection for May 2004 took place during 6/5-20/5/2004.

\* Data Collection for July 2004 took place during 2/7-22/7/2004.

\* Data Collection for October 2004 took place during 2/10-22/10/2004.

\* Data Collection for January 2005 took place during 2/1-22/1/2005.

\* Data Collection for April 2005 took place during 2/4-20/4/2005

\* Data Collection for July 2005 took place during 10/7-30/7/2005

.2004/2/20-2/8

2004

.2004/3/28-3/1

2004

2004/4/20-4/6

2004

2004/5/20-5/6

2004

2004/7/22-7/2

2004

2004/10/22-10/2

2004

2005/1/22-1/2

2005

2005/4/20-4/2

2005

2005/7/30-7/10

2005

\*

\*

\*

\*

\*

\*

\*

\*

\*

9

Table 2: Main Changes on the Indicators of Attitudes of Palestinians in the West Bank

Indicator	تموز 2005 July*		نيسان 2005 April*		كانون ثاني 2005 January*		تشرين أول 2004 *October %		تموز 2004 *July %		أيار 2004 May*(%)		نيسان 2004 April* (%)		آذار 2004 *March (%)		شباط 2004 *February (%)		
	خلال الستة شهور القادمة Next six Months	خلال الشهر القادم Next Month	خلال الستة شهور القادمة Next six Months	خلال الشهر القادم Next Month	خلال الستة شهور القادمة Next six Months	خلال الشهر القادم Next Month	خلال الستة شهور القادمة Next six Months	خلال الشهر القادم Next Month	خلال الستة شهور القادمة Next six Months	خلال الشهر القادم Next Month	خلال الستة شهور القادمة Next six Months	خلال الشهر القادم Next Month	خلال الستة شهور القادمة Next six Months	خلال الشهر القادم Next Month	خلال الستة شهور القادمة Next six Months	خلال الشهر القادم Next Month	خلال الستة شهور القادمة Next six Months	خلال الشهر القادم Next Month	
Percentage of households who expect better life	24.3	25.5	35.6	34.6	43.7	39.4	19.9	19.2	31.2	32.5	18.2	16.7	28.3	27.2	24.5	24.2	24.3	24.0	نسبة الأسر المتفائلة بتحسين الوضع العام للأسرة
Percentage of households who expect better mobility (less mobility restrictions)	20.4	22.0	32.0	31.2	39.4	36.0	13.9	14.2	30.4	31.7	13.5	13.1	22.9	21.6	23.0	24.2	20.6	21.8	نسبة الأسر المتفائلة بتحسين إمكانية الحركة والتنقل
Percentage of unemployed persons who are optimistic to find a job	40.1	38.8	45.0	40.6	54.0	50.7	28.5	28.1	37.5	32.4	29.9	28.0	32.4	25.8	34.6	32.8	12.1	11.8	نسبة المتعطلين المتفائلين بإيجاد فرصة عمل
Percentage of persons who are optimistic to meet household basic needs	53.5	54.3	61.1	59.6	61.0	59.4	46.0	46.7	54.5	54.0	48.5	45.0	52.0	51.6	60.3	60.4	53.1	52.4	نسبة المتفائلين بتلبية احتياجات الأسرة
Percentage of persons who are optimistic to meet the community basic needs	44.1	42.1	55.5	52.0	50.2	46.7	38.5	37.3	47.7	45.1	38.0	38.1	40.9	39.7	49.8	47.6	40.9	39.0	نسبة المتفائلين بتلبية احتياجات التجمع السكاني

\* Data Collection for February 2004 took place during 8/2-20/2/2004.

\* Data Collection for March 2004 took place during 1/3-28/3/2004.

\* Data Collection for April 2004 took place during 6/4-20/4/2004.

\* Data Collection for May 2004 took place during 6/5-20/5/2004.

\* Data Collection for July 2004 took place during 2/7-22/7/2004.

\* Data Collection for October 2004 took place during 2/10-22/10/2004.

\* Data Collection for January 2005 took place during 2/1-22/1/2005.

\* Data Collection for April 2005 took place during 2/4-20/4/2005

\* Data Collection for July 2005 took place during 10/7-30/7/2005

.2004/2/20-2/8	2004	*
.2004/3/28-3/1	2004	*
2004/4/20-4/6	2004	*
2004/5/20-5/6	2004	*
2004/7/22-7/2	2004	*
2004/10/22-10/2	2004	*
2005/1/22-1/2	2005	*
2005/4/20-4/2	2005	*
2005/7/30-7/10	2005	*



Table 3: Main Changes on the Indicators of Attitudes of Palestinians in Gaza Strip

Indicator	تموز 2005 July*		نيسان 2005 April*		كانون ثاني 2005 January*		تشرين أول 2004 *October %		تموز 2004 *July %		أيار 2004 May*(%)		نيسان 2004 April* (%)		آذار 2004 *March (%)		شباط 2004 *February (%)		
	خلال الستة شهور القادمة Next six Months	خلال الشهر القادم Next Month	خلال الستة شهور القادمة Next six Months	خلال الشهر القادم Next Month	خلال الستة شهور القادمة Next six Months	خلال الشهر القادم Next Month	خلال الستة شهور القادمة Next six Months	خلال الشهر القادم Next Month	خلال الستة شهور القادمة Next six Months	خلال الشهر القادم Next Month	خلال الستة شهور القادمة Next six Months	خلال الشهر القادم Next Month	خلال الستة شهور القادمة Next six Months	خلال الشهر القادم Next Month	خلال الستة شهور القادمة Next six Months	خلال الشهر القادم Next Month	خلال الستة شهور القادمة Next six Months	خلال الشهر القادم Next Month	
Percentage of households who expect better life	48.9	44.2	54.2	49.4	52.0	46.7	27.3	24.1	35.8	28.2	24.3	21.3	36.8	29.0	34.6	30.1	35.8	29.1	نسبة الأسر المقتضية بتحسين الوضع العام للأسرة
Percentage of households who expect better mobility (less mobility restrictions)	53.0	45.4	40.8	36.9	35.4	30.9	24.4	20.9	20.5	12.3	12.6	7.3	18.4	7.4	16.1	7.3	18.6	10.7	نسبة الأسر المقتضية بتحسين إمكانية الحركة والتنقل
Percentage of unemployed persons who are optimistic to find a job	53.3	37.4	46.2	30.5	49.7	59.1	28.7	26.3	46.2	39.9	44.2	41.4	33.0	17.9	47.1	33.9	17.3	15.0	نسبة المتعطلين المقتضين بإيجاد فرصة عمل
Percentage of persons who are optimistic to meet household basic needs	71.3	64.4	72.2	68.0	71.3	70.9	52.8	52.8	66.4	59.3	57.0	50.7	65.4	61.2	61.7	55.4	65.5	58.2	نسبة المقتضين بتلبية احتياجات الأسرة
Percentage of persons who are optimistic to meet the community basic needs	70.5	60.9	71.5	65.8	70.8	68.6	44.4	41.9	62.8	54.5	50.7	44.1	59.2	51.1	60.6	47.6	59.1	49.4	نسبة المقتضين بتلبية احتياجات التجمع السكاني

\* Data Collection for February 2004 took place during 8/2-20/2/2004.

\* Data Collection for March 2004 took place during 1/3-28/3/2004.

\* Data Collection for April 2004 took place during 6/4-20/4/2004.

\* Data Collection for May 2004 took place during 6/5-20/5/2004.

\* Data Collection for July 2004 took place during 2/7-22/7/2004.

\* Data Collection for October 2004 took place during 2/10-22/10/2004.

\* Data Collection for January 2005 took place during 2/1-22/1/2005.

\* Data Collection for April 2005 took place during 2/4-20/4/2005

\* Data Collection for July 2005 took place during 10/7-30/7/2005

.2004/2/20-2/8

2004

.2004/3/28-3/1

2004

2004/4/20-4/6

2004

2004/5/20-5/6

2004

2004/7/22-7/2

2004

2004/10/22-10/2

2004

2005/1/22-1/2

2005

2005/4/20-4/2

2005

2005/7/30-7/10

2005

11

(2005 )

:4

**Table 4: The Attitude of Palestinians Toward the Overall “Quality of Life” Enjoyed by the Households Today Compared with One Month Ago by Region (July, 2005)**

Attitude	Gaza Strip	West Bank	Palestinian Territory	
	%	%	%	
A lot better today	4.2	2.6	3.2	/
Somewhat better today	9.6	10.3	10.1	
About the same/ Unchanged	44.7	50.4	48.3	
Somewhat worse today	24.0	29.9	27.8	
A lot worse today	17.3	6.5	10.4	
Don't know	0.2	0.3	0.2	
<b>Total</b>	<b>100.0</b>	<b>100.0</b>	<b>100.0</b>	

(2005 )

:5

**Table 5: The Attitude of Palestinians Toward the Overall “Quality of Life” Enjoyed by the Households in the Future Compared with Today and Region, (July, 2005)**

Attitude	Region and Time Period						
	Gaza Strip		West Bank		Palestinian Territory		
	Next Six Months %	Next Month %	Next Six Months %	Next Month %	Next Six Months %	Next Month %	
A lot better from now	12.2	6.9	2.2	1.7	5.8	3.6	/
Somewhat better from now	36.7	37.3	22.1	23.8	27.4	28.7	
About the same /unchanged	25.6	29.3	29.5	35.7	28.1	33.4	
Somewhat worse from now	10.7	14.2	20.2	20.7	16.8	18.3	
A lot worse from now	9.1	8.4	6.2	5.0	7.3	6.2	
Don't know	5.7	3.9	19.8	13.1	14.6	9.8	
<b>Total</b>	<b>100.0</b>	<b>100.0</b>	<b>100.0</b>	<b>100.0</b>	<b>100.0</b>	<b>100.0</b>	

(2005 )

:6

**Table 6: The Attitude of Palestinians Toward the Overall “Quality of Life” Enjoyed by the Households in the Future by Selected Characteristics (July, 2005)**

Characteristics	Time Period				
	Next Six Months %		Next Month %		
	Worse %	Better %	Worse %	Better %	
<b>Age Group</b>					
15-17	21.1	38.5	23.8	37.5	17-15
18-29	24.0	35.7	23.6	33.6	29-18
30-49	25.6	32.0	26.2	32.2	49-30
50+	23.1	25.8	24.0	24.8	+50
<b>Refugee status</b>					
Refugee	20.7	40.2	22.2	37.9	
Non - Refugee	26.4	28.2	26.3	28.2	
<b>Education</b>					
Less than Preparatory	25.3	31.5	26.4	31.8	
Preparatory - secondary	24.1	35.7	22.9	32.0	-
Diploma and above	16.5	39.0	17.2	35.8	

(2005 )

:7

**Table 7: Distribution of Palestinian Households by the Level of Disturbance Caused by Restrictions on Mobility Imposed by Israeli Military Forces and Region, (July, 2005)**

Level of Disturbance	Region and Time Period						
	Gaza Strip		West Bank		Palestinian Territory		
	Past Six Months %	Past Month %	Past Six Months %	Past Month %	Past Six Months %	Past Month %	
A lot	39.6	20.2	33.9	29.2	35.9	26.0	
A little	18.6	21.7	28.0	29.2	24.5	26.5	
Not at all	40.4	56.4	35.1	38.5	37.0	45.0	
Don't know	1.4	1.7	3.0	3.1	2.6	2.5	
<b>Total</b>	<b>100.0</b>	<b>100.0</b>	<b>100.0</b>	<b>100.0</b>	<b>100.0</b>	<b>100.0</b>	

(2005 )

:8

**Table 8: Distribution of Palestinian Households by the Need of Medical Care for Households and Region, (July, 2005)**

Need for medical care	Region and Period						
	Gaza Strip		West Bank		Palestinian Territory		
	Past Six Months %	Past Month %	Past Six Months %	Past Month %	Past Six Months %	Past Month %	
Yes	69.5	64.4	58.6	50.8	62.6	55.7	
No	30.5	35.6	40.8	48.6	37.0	43.9	
Don't know	-		0.6	0.6	0.4	0.4	
<b>Total</b>	<b>100.0</b>	<b>100.0</b>	<b>100.0</b>	<b>100.0</b>	<b>100.0</b>	<b>100.0</b>	

(2005 )

:9

**Table 9: Distribution of Palestinian Households by Ability for Household Member to Access Necessary Medical Care and Region, (July, 2005)**

Ability to access medical care	Region and Time Period						
	Gaza Strip		West Bank		Palestinian Territory		
	Past Six Months %	Past Month %	Past Six Months %	Past Month %	Past Six Months %	Past Month %	
Impossible	0.3	0.1	1.5	1.7	1.0	1.0	
Very difficult	4.3	3.7	9.0	9.0	7.1	6.8	
Difficult	14.6	13.0	16.0	17.2	15.4	15.4	
Few problems	30.6	29.4	28.2	26.6	29.2	27.8	
No problem at all	50.2	53.6	45.0	45.3	47.1	48.8	
<b>Don't know</b>	-	0.2	0.3	0.2	0.2	0.2	
<b>Total</b>	<b>100.0</b>	<b>100.0</b>	<b>100.0</b>	<b>100.0</b>	<b>100.0</b>	<b>100.0</b>	

(2005 )

:10

**Table 10: Distribution of Palestinian Households by Ability of Household Member to Reach Work Place and Region (July, 2005)**

Ability to reach place of work	Region and Period					
	Gaza Strip		West Bank		Palestinian Territory	
	Past Six Months %	Past Month %	Past Six Months %	Past Month %	Past Six Months %	Past Month %
Impossible	2.2	1.2	2.9	2.8	2.7	2.2
Very difficult	5.7	3.8	11.5	9.9	9.5	7.9
Difficult	10.1	5.0	16.4	17.2	14.2	13.1
Few problems	19.6	16.5	23.6	22.6	22.3	20.6
No problem at all	62.3	73.4	45.2	47.3	51.0	56.0
Don't know	0.1	0.1	0.4	0.2	0.3	0.2
<b>Total</b>	<b>100.0</b>	<b>100.0</b>	<b>100.0</b>	<b>100.0</b>	<b>100.0</b>	<b>100.0</b>

(2005 )

:11

**Table 11: Distribution of Palestinian Households by Ability to Cultivate Land and Region (July, 2005)**

Ability to cultivate land	Region and Time Period					
	Gaza Strip		West Bank		Palestinian Territory	
	Past Six Months %	Past Month %	Past Six Months %	Past Month %	Past Six Months %	Past Month %
Impossible	10.4	12.2	5.7	5.7	6.4	6.7
Very difficult	19.8	17.0	9.8	9.2	11.3	10.3
Difficult	11.4	11.1	10.5	10.5	10.7	10.6
Few problems	17.5	18.7	14.4	14.3	14.8	14.9
No problem at all	40.9	41.0	58.7	59.3	55.9	56.7
Don't know	-	-	0.9	1.0	0.9	0.8
<b>Total</b>	<b>100.0</b>	<b>100.0</b>	<b>100.0</b>	<b>100.0</b>	<b>100.0</b>	<b>100.0</b>

(2005 )

**Table 12: The Attitude of Palestinians Toward the Ability of Household Members to Move Around this Week Compared to the Last Week by Region (July, 2005)**

Ability for household members to move	Gaza Strip %	West Bank %	Palestinian Territory %
Significantly easier this week	5.8	2.7	3.8
Somewhat easier this week	18.4	11.5	14.0
About the same/ Unchanged	66.2	70.6	69.0
Somewhat harder this week	5.6	10.0	8.4
Significantly harder this week	3.5	2.6	2.9
Don't know	0.5	2.6	1.9
<b>Total</b>	<b>100.0</b>	<b>100.0</b>	<b>100.0</b>

(2005 )

**Table 13: The Attitude of Palestinians Toward the Ability of Household Members to Move Around Next Month, Next Six Months Compared to this Week and Region, (July, 2005)**

The ability of household members to move	Region and Time Period					
	Gaza Strip		West Bank		Palestinian Territory	
	Next Six Months %	Next Month %	Next Six Months %	Next Month %	Next Six Months %	Next Month %
Significantly easier	16.5	9.3	1.3	1.1	6.8	4.1
Somewhat easier	36.5	36.1	19.1	20.9	25.4	26.4
About the same	40.5	46.7	38.5	45.6	39.3	46.0
Somewhat harder	3.1	5.1	9.9	9.9	7.4	8.2
Significantly harder	1.2	1.1	5.9	3.7	4.2	2.8
Don't know	2.2	1.7	25.3	18.8	16.9	12.5
<b>Total</b>	<b>100.0</b>	<b>100.0</b>	<b>100.0</b>	<b>100.0</b>	<b>100.0</b>	<b>100.0</b>

(2005 ) ( )

:14

**Table 14: The Attitude of Palestinians Toward the Ability to Find a Job by Region, (July, 2005)**

The Ability to find a job	Region and Time Period						( )
	Gaza Strip		West Bank		Palestinian Territory		
	Next Six Months %	Next Month %	Next Six Months %	Next Month %	Next Six Months %	Next Month %	
Very optimistic/ very likely	4.5	3.9	6.6	4.9	5.7	4.5	( )
Somewhat optimistic/ likely	48.8	33.5	33.5	33.9	40.2	33.7	( )
Neither optimistic/ nor pessimistic	15.2	14.7	20.8	25.6	18.4	20.8	
Somewhat pessimistic/ unlikely	13.5	21.0	11.7	13.0	12.5	16.5	) (
Very pessimistic/ very unlikely	18.0	26.9	15.5	16.8	16.6	21.3	) (
Don't know	-	-	11.9	5.8	6.6	3.2	
<b>Total</b>	<b>100.0</b>	<b>100.0</b>	<b>100.0</b>	<b>100.0</b>	<b>100.0</b>	<b>100.0</b>	

(2005 )

:15

**Table 15: Distribution of Palestinian Households by the Most Important Need for Household and Region, (July, 2005)**

Most important need	Gaza Strip %		West Bank %		Palestinian Territory %		( )
	Second Need	First Need	Second Need	First Need	Second Need	First Need	
	Food	19.2	30.6	19.5	51.5	19.4	
Clothes	9.4	1.6	11.9	1.0	10.9	1.3	
Education	14.2	7.5	19.4	11.5	17.5	10.0	
Employment	12.1	31.3	17.1	10.5	15.2	18.1	
Financial assistance	29.0	16.3	15.8	12.7	20.7	14.0	
Health	9.3	5.3	12.3	7.7	11.2	6.8	
Housing	5.3	5.6	3.6	4.2	4.2	4.7	
Entertainment activities	1.1	1.3	0.3	0.3	0.6	0.6	
Other	0.4	0.5	0.1	0.6	0.3	0.6	
<b>Total</b>	<b>100.0</b>	<b>100.0</b>	<b>100.0</b>	<b>100.0</b>	<b>100.0</b>	<b>100.0</b>	

(تموز 2005)

:16

**Table 16: Distribution of Palestinian Households by the Most Important Need of Locality and Region, (July, 2005)**

The Most Important Needs	Gaza Strip %	West Bank %	Palestinian Territory %
Create jobs	68.7	53.5	59.1
Health Services	5.0	10.1	8.2
Food assistances	4.0	4.3	4.2
Education Services	1.5	4.9	3.7
Infrastructure Project	16.7	19.0	18.2
No Need	2.1	4.3	3.5
Don't know	2.0	3.9	3.1
<b>Total</b>	<b>100.0</b>	<b>100.0</b>	<b>100.0</b>

:17

(2005 )

**Table 17: Distribution of Palestinians by their Knowledge about Development Projects Conducted in the Community by Donors and Region, (July, 2005)**

Knowledge	Gaza Strip %	West Bank %	Palestinian Territory %
Yes	15.2	20.6	18.6
No	81.5	67.9	72.8
Don't know	3.3	11.5	8.6
<b>Total</b>	<b>100.0</b>	<b>100.0</b>	<b>100.0</b>

(2005 )

:18

**Table 18: The Attitude of Palestinians Toward the Satisfaction on the Development Projects Conducted in the Community and Region, (July, 2005)**

Stratification level	Gaza Strip %	West Bank %	Palestinian Territory %
Very satisfied	36.2	33.1	34.0
Somewhat satisfied	39.1	42.6	41.6
Somewhat unsatisfied	14.3	12.0	12.7
Very unsatisfied	10.2	12.3	11.6
Don't know	0.2	-	0.1
<b>Total</b>	<b>100.0</b>	<b>100.0</b>	<b>100.0</b>



(2005 )

**Table 19: Distribution of Palestinians by the Most Important Infrastructure Needs in the Community and Region, (July, 2005)**

<b>The most important needs</b>	<b>Gaza Strip %</b>	<b>West Bank %</b>	<b>Palestinian Territory %</b>	
Electricity	7.4	6.9	7.1	
Roads	22.6	16.2	18.6	
Sewage disposal	20.8	19.8	20.2	
Water supply	12.8	12.9	12.9	
Schools	5.5	10.6	8.7	
Health clinics / hospitals	8.9	13.9	12.1	
No Need	20.9	15.8	17.6	
Don't know	1.1	3.9	2.8	
<b>Total</b>	<b>100.0</b>	<b>100.0</b>	<b>100.0</b>	