



**Palestinian National Authority  
Palestinian Central Bureau of Statistics**

**Survey on the Perception of Palestinian Population  
Towards the Socioeconomic Conditions, January 2006**

**The press conference of the survey results**

**March, 2006**

© March, 2006  
**All rights reserved.**

**Suggested Citation:**

**Palestinian Central Bureau of Statistics, 2006.** *Survey on the Perception of Palestinian Population Towards the Socioeconomic Conditions, January 2006*  
*Ramallah- Palestine*

All correspondence should be directed to:  
Dissemination and Documentation Department\Division of user services  
**Palestinian Central Bureau of Statistics.**  
**P.O. Box 1647, Ramallah - Palestine.**

Tel: (972/970) 2 240 6340  
E-mail: diwan@pcbs.gov.ps

Fax: (972/970) 2 240 6343  
Web-site: <http://www.pcbs.gov.ps>



# **Palestinian National Authority Palestinian Central Bureau of Statistics**

## **Survey on the Perception of Palestinian Population Towards the Socioeconomic Conditions, January 2006**

### **Contents**

1. The press release
2. The tables

**Press Release**  
**On the Main Findings of the Survey on the Perception of Palestinian  
Population Towards the Socioeconomic Conditions, January 2006**

**“The optimistic expectations in the well-being of the households and  
community in general and the expectation of job opportunities are  
increased”**

PCBS conducted the 14<sup>th</sup> round of the survey on the perception of the Palestinian people about the socioeconomic conditions. Data collection took place during the period 22/1/2006-11/2/2006 on a sample composed of 3,354 individuals aged 15 years and above, (2,187 in the West Bank and 1,167 in Gaza Strip).

**Current Situation**

32.6% of interviewed persons reported that the overall well-being of their households is worse in January 2006 compared with a month ago (33.1% in the West Bank and 31.5% in Gaza Strip), while 13.4% reported that it is better (14.8% in the West Bank and 10.7% in Gaza Strip).

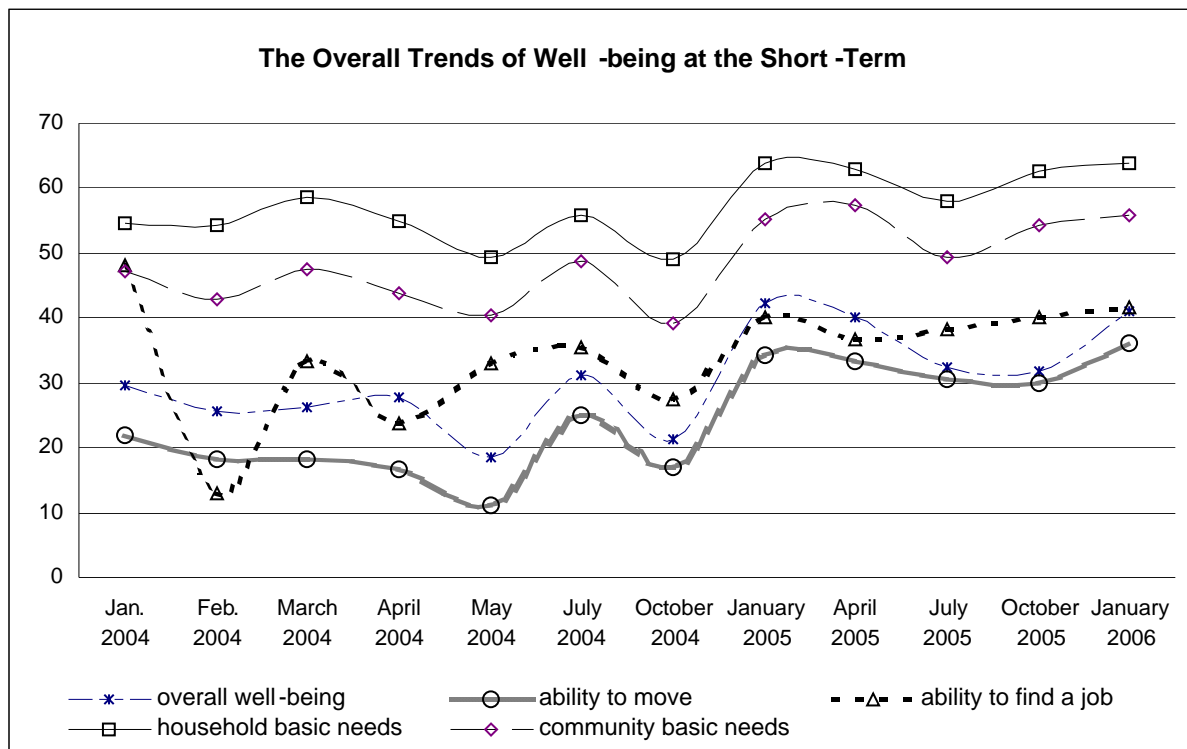
20.5% of the households reported that the ability of households' members to move around is easier this week compared with a week ago (18.7% in the West Bank and 23.7% in Gaza Strip), while 9.2% reported that it is harder (11.4% in the West Bank and 5.5% in Gaza Strip).

**Short-Term Expectations:**

The 14<sup>th</sup> round, (January 2006) showed that 41.0% of the respondents expected that overall well being of the households will be better (31.1% in the West Bank and 59.5% in Gaza Strip), while the expectation during the 13<sup>th</sup> round, (October 2005), was 31.7% (25.5% in the West Bank and 42.8% in Gaza Strip)

36.2% of interviewed persons expected that the ability of households' members to move around will be better next month compared with interviewing week (25.2% in the West Bank and 56.4% in Gaza Strip), while the expectation during the 13<sup>th</sup> round, (October 2005), was 29.8% (20.5% in the West Bank and 46.7% in Gaza Strip).

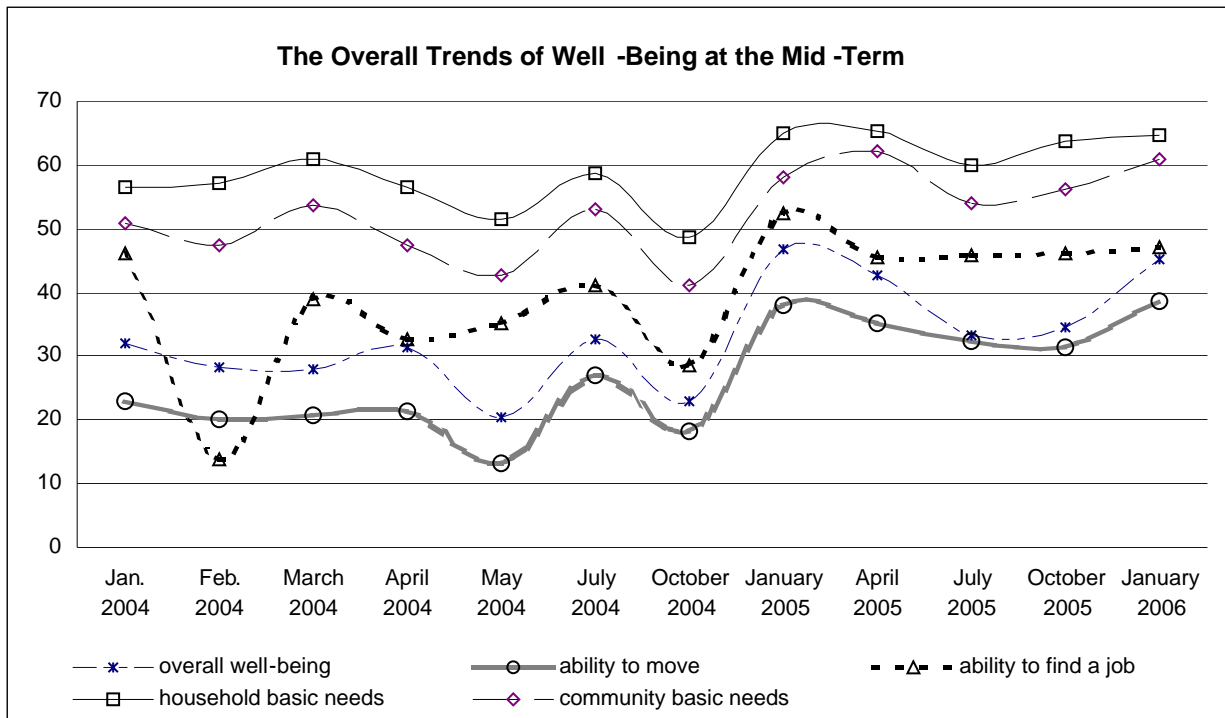
41.5% of interviewed persons reported that they are very optimistic to find a job next month, of which 36.4% in the West Bank and 49.5% in Gaza Strip.



**Mid-Term Expectations:**

The 14<sup>th</sup> round showed that 45.2% of the respondents expected that overall well-being of households will be better in six months time (35.2% in the West Bank and 63.5% in Gaza Strip), while the expectation during the 13<sup>th</sup> round, (October 2005), was 34.6% (28.8% in the West Bank and 45.1% in Gaza Strip).

38.5% of interviewed persons reported that the ability of household members to move around will be better in six months time compared with interviewing week (27.3% in the West Bank and 59.0% in Gaza Strip), while the expectation during the 13<sup>th</sup> round, (October 2005), was 31.3% (22.3% in the West Bank and 47.6% in Gaza Strip).



**Priorities of households:**

Data reveal that 37.1% of the households reported the need for food as a first priority, 20.2% the need for financial assistance, 21.3% the need for work, and 8.3% reported the need for educational services, while 5.5% reported the need for health services as a first priority.

**Priority Needs of Communities:**

About 57.5% of households reported the need for job creation opportunities, and 17.9% reported the need for developing infrastructure services, and 7.3% for providing health services.

Table 1: Main Changes on the Indicators of Attitudes of Palestinians in the Palestinian Territory

Indicator	كانون ثاني January 2006		تشرين اول November 2005		تموز July*		نيسان April*		كانون ثاني January*		تشرين اول *October %		تموز July %		ايار May*(%)		نيسان April* (%)		آذار *March (%)		
	خلال الستة شهور القادمة Next six Months	خلال الشهر القادم Next Month	خلال الستة شهور القادمة Next six Months	خلال الشهر القادم Next Month	خلال الستة شهور القادمة Next six Months	خلال الشهر القادم Next Month	خلال الستة شهور القادمة Next six Months	خلال الشهر القادم Next Month	خلال الستة شهور القادمة Next six Months	خلال الشهر القادم Next Month	خلال الستة شهور القادمة Next six Months	خلال الشهر القادم Next Month	خلال الستة شهور القادمة Next six Months	خلال الشهر القادم Next Month	خلال الستة شهور القادمة Next six Months	خلال الشهر القادم Next Month	خلال الستة شهور القادمة Next six Months	خلال الشهر القادم Next Month	خلال الستة شهور القادمة Next six Months	خلال الشهر القادم Next Month	
Percentage of households who expect better life	45.2	41.0	34.6	31.7	33.2	32.3	42.7	40.2	46.8	42.2	22.9	21.2	32.8	31.0	20.4	18.4	31.3	27.8	28.0	26.2	نسبة الأسر المتفائلة بتحسين الوضع العام للأسرة
Percentage of households who expect better mobility (less mobility restrictions)	38.5	36.2	31.3	29.8	32.2	30.5	35.3	33.3	37.9	34.1	18.1	16.9	26.9	24.9	13.1	11.1	21.3	16.7	20.7	18.3	نسبة الأسر المتفائلة بتحسين إمكانية الحركة والتنقل
Percentage of unemployed persons who are optimistic to find a job	47.1	41.5	46.1	40.0	45.9	38.2	45.5	36.8	52.4	40.2	28.6	27.3	41.1	35.5	35.3	33.0	32.5	23.6	38.8	33.2	نسبة المتعطلين المتفائلين بإيجاد فرصة عمل

\* Data Collection for March 2004 took place during 1/3-28/3/2004.

\* Data Collection for April 2004 took place during 6/4-20/4/2004.

\* Data Collection for May 2004 took place during 6/5-20/5/2004.

\* Data Collection for July 2004 took place during 2/7-22/7/2004.

\* Data Collection for October 2004 took place during 2/10-22/10/2004.

\* Data Collection for January 2005 took place during 2/1-22/1/2005.

\* Data Collection for April 2005 took place during 2/4-20/4/2005

\* Data Collection for July 2005 took place during 10/7-30/7/2005

\* Data Collection for November 2005 took place during 22/10-11/11/2005

\* Data Collection for January 2006 took place during 22/1-11/2/2006

2004/3/28-3/1

2004

2004/4/20-4/6

2004

2004/5/20-5/6

2004

2004/7/22-7/2

2004

2004/10/22-10/2

2004

2005/1/22-1/2

2005

2005/4/20-4/2

2005

2005/7/30-7/10

2005

2005/11/11-10/22

2005

2006/2/11-1/22

2006

\*

\*

\*

\*

\*

\*

\*

\*

\*

\*

9

Table 2: Main Changes on the Indicators of Attitudes of Palestinians in the West Bank

Indicator	كانون ثاني January 2006		تشرين اول November 2005		تموز July*		نيسان April*		كانون ثاني January*		تشرين اول *October %		تموز July %		أيار May*(%)		نيسان April* (%)		أذار *March (%)		
	خلال الستة شهور القادمة Next six Months	خلال الشهر القادم Next Month	خلال الستة شهور القادمة Next six Months	خلال الشهر القادم Next Month	خلال الستة شهور القادمة Next six Months	خلال الشهر القادم Next Month	خلال الستة شهور القادمة Next six Months	خلال الشهر القادم Next Month	خلال الستة شهور القادمة Next six Months	خلال الشهر القادم Next Month	خلال الستة شهور القادمة Next six Months	خلال الشهر القادم Next Month	خلال الستة شهور القادمة Next six Months	خلال الشهر القادم Next Month	خلال الستة شهور القادمة Next six Months	خلال الشهر القادم Next Month	خلال الستة شهور القادمة Next six Months	خلال الشهر القادم Next Month	خلال الستة شهور القادمة Next six Months	خلال الشهر القادم Next Month	
Percentage of households who expect better life	35.2	31.1	28.8	25.5	24.3	25.5	35.6	34.6	43.7	39.4	19.9	19.2	31.2	32.5	18.2	16.7	28.3	27.2	24.5	24.2	نسبة الأسر المتفائلة بتحسين الوضع العام للأسرة
Percentage of households who expect better mobility (less mobility restrictions)	27.3	25.2	22.3	20.5	20.4	22.0	32.0	31.2	39.4	36.0	13.9	14.2	30.4	31.7	13.5	13.1	22.9	21.6	23.0	24.2	نسبة الأسر المتفائلة بتحسين إمكانية الحركة والتنقل
Percentage of unemployed persons who are optimistic to find a job	41.6	36.4	42.8	40.4	40.1	38.8	45.0	40.6	54.0	50.7	28.5	28.1	37.5	32.4	29.9	28.0	32.4	25.8	34.6	32.8	نسبة المتعطلين المتفائلين بإيجاد فرصة عمل

\* Data Collection for March 2004 took place during 1/3-28/3/2004.

\* Data Collection for April 2004 took place during 6/4-20/4/2004.

\* Data Collection for May 2004 took place during 6/5-20/5/2004.

\* Data Collection for July 2004 took place during 2/7-22/7/2004.

\* Data Collection for October 2004 took place during 2/10-22/10/2004.

\* Data Collection for January 2005 took place during 2/1-22/1/2005.

\* Data Collection for April 2005 took place during 2/4-20/4/2005

\* Data Collection for July 2005 took place during 10/7-30/7/2005

\* Data Collection for November 2005 took place during 22/10-11/11/2005

\* Data Collection for January 2006 took place during 22/1-11/2/2006

.2004/3/28-3/1	2004	*
2004/4/20-4/6	2004	*
2004/5/20-5/6	2004	*
2004/7/22-7/2	2004	*
2004/10/22-10/2	2004	*
2005/1/22-1/2	2005	*
2005/4/20-4/2	2005	*
2005/7/30-7/10	2005	*
2005/11/11-10/22	2005	*
2006/2/11-1/22	2006	*



:3

Table 3: Main Changes on the Indicators of Attitudes of Palestinians in Gaza Strip

Indicator	كانون ثاني January 2006		تشرين اول November 2005		تموز 2005 July*		نيسان 2005 April*		كانون ثاني 2005 January*		تشرين اول 2004 *October %		تموز 2004 *July %		ايار 2004 May*(%)		نيسان 2004 April* (%)		آذار 2004 *March (%)		
	خلال الستة شهور القادمة Next six Months	خلال الشهر القادم Next Month	خلال الستة شهور القادمة Next six Months	خلال الشهر القادم Next Month	خلال الستة شهور القادمة Next six Months	خلال الشهر القادم Next Month	خلال الستة شهور القادمة Next six Months	خلال الشهر القادم Next Month	خلال الستة شهور القادمة Next six Months	خلال الشهر القادم Next Month	خلال الستة شهور القادمة Next six Months	خلال الشهر القادم Next Month	خلال الستة شهور القادمة Next six Months	خلال الشهر القادم Next Month	خلال الستة شهور القادمة Next six Months	خلال الشهر القادم Next Month	خلال الستة شهور القادمة Next six Months	خلال الشهر القادم Next Month	خلال الستة شهور القادمة Next six Months	خلال الشهر القادم Next Month	
Percentage of households who expect better life	63.5	59.5	45.1	42.8	48.9	44.2	54.2	49.4	52.0	46.7	27.3	24.1	35.8	28.2	24.3	21.3	36.8	29.0	34.6	30.1	نسبة الأسر المتفائلة بتحسن الوضع العام للأسرة
Percentage of households who expect better mobility (less mobility restrictions)	59.0	56.4	47.6	46.7	53.0	45.4	40.8	36.9	35.4	30.9	24.4	20.9	20.5	12.3	12.6	7.3	18.4	7.4	16.1	7.3	نسبة الأسر المتفائلة بتحسن إمكانية الحركة والتنقل
Percentage of unemployed persons who are optimistic to find a job	56.0	49.5	49.9	39.7	53.3	37.4	46.2	30.5	49.7	59.1	28.7	26.3	46.2	39.9	44.2	41.4	33.0	17.9	47.1	33.9	نسبة المتعطلين المتفائلين بإيجاد فرصة عمل

\* Data Collection for March 2004 took place during 1/3-28/3/2004.

\* Data Collection for April 2004 took place during 6/4-20/4/2004.

\* Data Collection for May 2004 took place during 6/5-20/5/2004.

\* Data Collection for July 2004 took place during 2/7-22/7/2004.

\* Data Collection for October 2004 took place during 2/10-22/10/2004.

\* Data Collection for January 2005 took place during 2/1-22/1/2005.

\* Data Collection for April 2005 took place during 2/4-20/4/2005

\* Data Collection for July 2005 took place during 10/7-30/7/2005

\* Data Collection for November 2005 took place during 22/10-11/11/2005

\* Data Collection for January 2006 took place during 22/1-11/2/2006

2004/3/28-3/1

2004

\*

2004/4/20-4/6

2004

\*

2004/5/20-5/6

2004

\*

2004/7/22-7/2

2004

\*

2004/10/22-10/2

2004

\*

2005/1/22-1/2

2005

\*

2005/4/20-4/2

2005

\*

2005/7/30-7/10

2005

\*

2005/11/11-10/22

2005

\*

2006/2/11-1/22

2006

\*

11

(2006 )

:4

**Table 4: The Attitude of Palestinians Toward the Overall “Quality of Life” Enjoyed by the Households Today Compared with One Month Ago by Region (January, 2006)**

Attitude	Gaza Strip	West Bank	Palestinian Territory	
	%	%	%	
A lot better today	1.7	1.8	1.8	/
Somewhat better today	9.0	13.0	11.6	
About the same/ Unchanged	57.7	52.0	54.0	
Somewhat worse today	23.4	27.0	25.8	
A lot worse today	8.1	6.1	6.8	
Don't know	0.0	0.1	0.0	
<b>Total</b>	<b>100.0</b>	<b>100.0</b>	<b>100.0</b>	

(2006 )

:5

**Table 5: The Attitude of Palestinians Toward the Overall “Quality of Life” Enjoyed by the Households in the Future Compared with Today and Region, (January, 2006)**

Attitude	Region and Time Period						
	Gaza Strip		West Bank		Palestinian Territory		
	Next Six Months %	Next Month %	Next Six Months %	Next Month %	Next Six Months %	Next Month %	
A lot better from now	6.6	3.2	3.5	2.3	4.6	2.6	/
Somewhat better from now	56.9	56.3	31.7	28.8	40.6	38.4	
About the same /unchanged	20.3	24.6	27.5	38.9	25.0	33.9	
Somewhat worse from now	8.0	9.7	17.1	16.8	13.9	14.3	
A lot worse from now	2.4	2.2	5.5	4.4	4.4	3.6	
Don't know	5.7	4.1	14.7	8.8	11.5	7.2	
<b>Total</b>	<b>100.0</b>	<b>100.0</b>	<b>100.0</b>	<b>100.0</b>	<b>100.0</b>	<b>100.0</b>	

(2006 )

:6

**Table 6: Distribution of Palestinian Households by the Level of Disturbance Caused by Restrictions on Mobility Imposed by Israeli Military Forces and Region, (January, 2006)**

Level of Disturbance	Region and Time Period						
	Gaza Strip		West Bank		Palestinian Territory		
	Past Six Months %	Past Month %	Past Six Months %	Past Month %	Past Six Months %	Past Month %	
A lot	39.9	-	26.7	22.6	31.3	22.1	
A little	21.8	26.4	29.0	29.7	26.5	29.6	
Not at all	35.6	73.6	42.0	45.9	39.7	46.4	
Don't know	2.7	-	2.3	1.8	2.5	1.9	
<b>Total</b>	<b>100.0</b>	<b>100.0</b>	<b>100.0</b>	<b>100.0</b>	<b>100.0</b>	<b>100.0</b>	

(2006 )

:7

**Table 7: Distribution of Palestinian Households by the Need of Medical Care for Households and Region, (January, 2006)**

Need for medical care	Region and Period						
	Gaza Strip		West Bank		Palestinian Territory		
	Past Six Months %	Past Month %	Past Six Months %	Past Month %	Past Six Months %	Past Month %	
Yes	80.9	74.1	66.3	59.3	71.4	64.5	
No	19.1	25.9	32.0	39.5	27.5	34.7	
Don't know	-	-	1.7	1.2	1.1	0.8	
<b>Total</b>	<b>100.0</b>	<b>100.0</b>	<b>100.0</b>	<b>100.0</b>	<b>100.0</b>	<b>100.0</b>	

**Table 8: Distribution of Palestinian Households by Ability for Household Member to Access Necessary Medical Care and Region, (January, 2006)**

Ability to access medical care	Region and Time Period						
	Gaza Strip		West Bank		Palestinian Territory		
	Past Six Months %	Past Month %	Past Six Months %	Past Month %	Past Six Months %	Past Month %	
Impossible	1.0	1.0	2.0	2.1	1.6	1.6	
Very difficult	3.9	1.5	3.8	4.5	3.8	3.3	
Difficult	8.6	8.3	13.7	14.8	11.6	12.2	
Few problems	25.5	23.1	22.4	22.2	23.6	22.6	
No problem at all	61.0	66.1	57.7	56.3	59.0	60.2	
Don't know	-	0.0	0.4	0.1	0.3	0.1	
<b>Total</b>	<b>100.0</b>	<b>100.0</b>	<b>100.0</b>	<b>100.0</b>	<b>100.0</b>	<b>100.0</b>	

**Table 9: Distribution of Palestinian Households by Ability of Household Member to Reach Work Place and Region (January, 2006)**

Ability to reach place of work	Region and Period						
	Gaza Strip		West Bank		Palestinian Territory		
	Past Six Months %	Past Month %	Past Six Months %	Past Month %	Past Six Months %	Past Month %	
Impossible	1.5	0.3	0.5	0.6	0.9	0.5	
Very difficult	11.9	0.8	8.5	7.1	9.6	5.1	
Difficult	10.2	3.6	14.1	13.6	12.8	10.3	
Few problems	14.8	8.5	21.8	20.3	19.4	16.5	
No problem at all	61.6	86.8	54.6	58.2	57.0	67.4	
Don't know	-	-	0.5	0.2	0.3	0.2	
<b>Total</b>	<b>100.0</b>	<b>100.0</b>	<b>100.0</b>	<b>100.0</b>	<b>100.0</b>	<b>100.0</b>	

(2006 )

:10

**Table 10: Distribution of Palestinian Households by Ability to Cultivate Land and Region (January, 2006)**

Ability to cultivate land	Region and Time Period					
	Gaza Strip		West Bank		Palestinian Territory	
	Past Six Months %	Past Month %	Past Six Months %	Past Month %	Past Six Months %	Past Month %
Impossible	15.2	5.9	4.7	5.0	6.1	5.2
Very difficult	12.7	0.5	4.2	3.1	5.3	2.8
Difficult	13.4	11.5	10.4	10.6	10.8	10.7
Few problems	11.5	13.4	9.4	9.3	9.7	9.9
No problem at all	47.3	68.6	70.5	71.3	67.4	70.9
Don't know	-	-	0.8	0.6	0.7	0.5
<b>Total</b>	<b>100.0</b>	<b>100.0</b>	<b>100.0</b>	<b>100.0</b>	<b>100.0</b>	<b>100.0</b>

:11

(2006 )

**Table 11: The Attitude of Palestinians Toward the Ability of Household Members to Move Around this Week Compared to the Last Week by Region (January, 2006)**

Ability for household members to move	Gaza Strip %	West Bank %	Palestinian Territory %
Significantly easier this week	6.5	2.7	4.0
Somewhat easier this week	17.2	16.0	16.5
About the same/ Unchanged	70.2	68.0	68.8
Somewhat harder this week	4.4	9.1	7.4
Significantly harder this week	1.1	2.3	1.8
Don't know	0.6	1.8	1.4
<b>Total</b>	<b>100.0</b>	<b>100.0</b>	<b>100.0</b>

(2006 )

**Table 12: The Attitude of Palestinians Toward the Ability of Household Members to Move Around Next Month, Next Six Months Compared to this Week and Region, (January, 2006)**

The ability of household members to move	Region and Time Period						
	Gaza Strip		West Bank		Palestinian Territory		
	Next Six Months %	Next Month %	Next Six Months %	Next Month %	Next Six Months %	Next Month %	
Significantly easier	11.8	6.6	1.9	1.9	5.4	3.5	
Somewhat easier	47.2	49.8	25.4	23.3	33.1	32.7	
About the same	32.4	35.8	38.9	48.9	36.6	44.3	
Somewhat harder	3.4	3.6	12.2	11.4	9.1	8.7	
Significantly harder	0.4	0.4	4.7	3.1	3.2	2.2	
Don't know	4.8	3.9	16.7	11.4	12.5	8.7	
<b>Total</b>	<b>100.0</b>	<b>100.0</b>	<b>100.0</b>	<b>100.0</b>	<b>100.0</b>	<b>100.0</b>	

(2006 )

( )

:13

**Table 13: The Attitude of Palestinians Toward the Ability to Find a Job by Region, (January, 2006)**

The Ability to find a job	Region and Time Period						( )
	Gaza Strip		West Bank		Palestinian Territory		
	Next Six Months %	Next Month %	Next Six Months %	Next Month %	Next Six Months %	Next Month %	
<b>Very optimistic</b>	5.3	3.5	4.2	3.1	4.6	3.3	
<b>Somewhat optimistic</b>	50.7	46.0	37.4	33.3	42.5	38.2	
<b>Neither optimistic</b>	17.1	20.6	21.9	27.6	20.0	24.9	
<b>Somewhat pessimistic</b>	16.4	18.9	17.3	18.9	16.9	18.9	
<b>Very pessimistic</b>	5.8	7.1	14.0	12.5	10.9	10.4	
<b>Don't know</b>	4.8	3.9	5.2	4.6	5.0	4.3	
<b>Total</b>	<b>100.0</b>	<b>100.0</b>	<b>100.0</b>	<b>100.0</b>	<b>100.0</b>	<b>100.0</b>	

(2006 )

:14

**Table 14: Distribution of Palestinian Households by the Most Important Need for Household and Region, (January, 2006)**

Most important need	Gaza Strip %		West Bank %		Palestinian Territory %		
	Second Need	First Need	Second Need	First Need	Second Need	First Need	
Food	19.4	30.6	19.8	40.6	19.7	37.1	
Clothes	12.0	0.4	10.2	0.6	10.8	0.5	
Education	10.8	7.9	13.8	8.5	12.8	8.3	
Employment	12.7	29.8	13.2	16.7	13.0	21.3	
Financial assistance	29.4	16.3	21.9	22.3	24.5	20.2	
Health	10.3	4.6	16.9	5.9	14.6	5.5	
Housing	4.4	7.0	3.6	4.2	3.8	5.2	( )
Entertainment activities	0.8	2.5	0.3	0.7	0.5	1.3	
Other	0.2	0.9	0.4	0.4	0.3	0.6	
<b>Total</b>	<b>100.0</b>	<b>100.0</b>	<b>100.0</b>	<b>100.0</b>	<b>100.0</b>	<b>100.0</b>	

(كانون ثاني 2006)

:15

**Table 15: Distribution of Palestinian Households by the Most Important Need of Locality and Region, (January, 2006)**

The Most Important Needs	Gaza Strip %	West Bank %	Palestinian Territory %	
Create jobs	71.3	50.1	57.5	
Health Services	4.9	8.6	7.3	
Food assistances	4.5	4.3	4.4	
Education Services	2.4	5.0	4.1	
Infrastructure Project	15.2	19.4	17.9	
No Need	1.1	7.2	5.1	
Don't know	0.5	5.4	3.7	
<b>Total</b>	<b>100.0</b>	<b>100.0</b>	<b>100.0</b>	

(2006 )

**Table 16: Distribution of Palestinians by their Knowledge about Development Projects Conducted in the Community by Donors and Region, (January, 2006)**

Knowledge	Gaza Strip %	West Bank %	Palestinian Territory %
Yes	8.9	14.7	12.7
No	89.0	68.4	75.6
Don't know	2.1	16.9	11.7
<b>Total</b>	<b>100.0</b>	<b>100.0</b>	<b>100.0</b>

(2006 )

:17

**Table 17: The Attitude of Palestinians Toward the Satisfaction on the Development Projects Conducted in the Community and Region, (January, 2006)**

Stratification level	Gaza Strip %	West Bank %	Palestinian Territory %
Very satisfied	26.2	30.2	29.2
Somewhat satisfied	45.4	46.4	46.2
Somewhat unsatisfied	11.6	10.5	10.7
Very unsatisfied	14.0	12.6	13.0
Don't know	2.8	0.3	0.9
<b>Total</b>	<b>100.0</b>	<b>100.0</b>	<b>100.0</b>

:18

(2006 )

**Table 18: Distribution of Palestinians by the Most Important Infrastructure Needs in the Community and Region, (January, 2006)**

The most important needs	Gaza Strip %	West Bank %	Palestinian Territory %
Electricity	6.8	6.6	6.6
Roads	23.7	20.1	21.3
Sewage disposal	24.0	15.1	18.2
Water supply	6.1	8.2	7.5
Schools	6.4	7.5	7.1
Health clinics / hospitals	10.6	15.1	13.5
No Need	21.0	21.4	21.3
Don't know	1.5	6.0	4.4
<b>Total</b>	<b>100.0</b>	<b>100.0</b>	<b>100.0</b>