



2006

.2006 - 1427 ©

:

.2006

2006

:

/

- **1647** . .

(970/972) 2 240 6343 :

<http://www.pcbs.gov.ps> :

(970/972) 2 240 6340 :

diwan@pcbs.gov.ps :



2006

.1

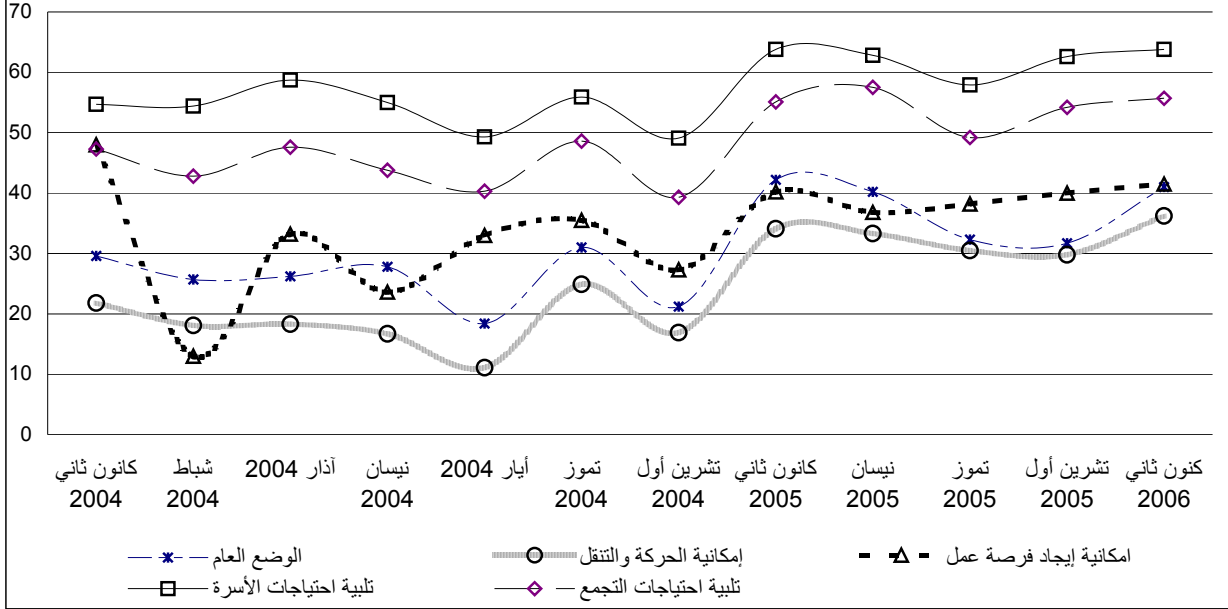
.2006

.2

2006

	2006/2/11	2006/1/22	
1,167	2,187)	3,354	3,489
			.(
			:
	%33.1)		%32.6
		%13.4	(%31.5
		.(%10.7	%14.8)
			%20.5
	%9.2 (%23.7	%18.7)
.(%5.5	%11.4)	
			:
		%41.0 2006	
	(%59.5	%31.1)
%25.5)			%31.7 2005
			.(%42.8
			%36.2
%29.8 2005	(%56.4	%25.2)
.2005	(%46.7	%20.5)
			%41.5 2006
%40.4) %40.0 (%49.5	%36.4)	
	.2005	(%39.7

الاتجاه العام لتوقعات الأسر على المدى القصير حسب مستوى التفاؤل



:

2006 %45.2
) %35.2
 .(%63.5
 2005 %34.6
) %28.8
 .(%45.1
 2006 %38.5
 %27.3)
 %47.6) %31.3 (%59.0
 .2005 ()
 %47.1
 .(%56.0) %41.6

Table 1: Main Changes on the Indicators of Attitudes of Palestinians in the Palestinian Territory

Indicator	كانون ثاني January 2006		تشرين اول November 2005		تموز July*		نيسان April*		كانون ثاني January*		تشرين اول *October %		تموز July %		أيار May*(%)		نيسان April* (%)		أذار *March (%)		
	خلال الستة شهور القادمة Next six Months	خلال الشهر القادم Next Month	خلال الستة شهور القادمة Next six Months	خلال الشهر القادم Next Month	خلال الستة شهور القادمة Next six Months	خلال الشهر القادم Next Month	خلال الستة شهور القادمة Next six Months	خلال الشهر القادم Next Month	خلال الستة شهور القادمة Next six Months	خلال الشهر القادم Next Month	خلال الستة شهور القادمة Next six Months	خلال الشهر القادم Next Month	خلال الستة شهور القادمة Next six Months	خلال الشهر القادم Next Month	خلال الستة شهور القادمة Next six Months	خلال الشهر القادم Next Month	خلال الستة شهور القادمة Next six Months	خلال الشهر القادم Next Month	خلال الستة شهور القادمة Next six Months	خلال الشهر القادم Next Month	
Percentage of households who expect better life	45.2	41.0	34.6	31.7	33.2	32.3	42.7	40.2	46.8	42.2	22.9	21.2	32.8	31.0	20.4	18.4	31.3	27.8	28.0	26.2	نسبة الأسر المتفائلة بتحسين الوضع العام للأسرة
Percentage of households who expect better mobility (less mobility restrictions)	38.5	36.2	31.3	29.8	32.2	30.5	35.3	33.3	37.9	34.1	18.1	16.9	26.9	24.9	13.1	11.1	21.3	16.7	20.7	18.3	نسبة الأسر المتفائلة بتحسين إمكانية الحركة والتنقل
Percentage of unemployed persons who are optimistic to find a job	47.1	41.5	46.1	40.0	45.9	38.2	45.5	36.8	52.4	40.2	28.6	27.3	41.1	35.5	35.3	33.0	32.5	23.6	38.8	33.2	نسبة المتعطلين المتفائلين بإيجاد فرصة عمل

* Data Collection for March 2004 took place during 1/3-28/3/2004.

* Data Collection for April 2004 took place during 6/4-20/4/2004.

* Data Collection for May 2004 took place during 6/5-20/5/2004.

* Data Collection for July 2004 took place during 2/7-22/7/2004.

* Data Collection for October 2004 took place during 2/10-22/10/2004.

* Data Collection for January 2005 took place during 2/1-22/1/2005.

* Data Collection for April 2005 took place during 2/4-20/4/2005

* Data Collection for July 2005 took place during 10/7-30/7/2005

* Data Collection for November 2005 took place during 22/10-11/11/2005

* Data Collection for January 2006 took place during 22/1-11/2/2006

2004/3/28-3/1 2004

2004/4/20-4/6 2004

2004/5/20-5/6 2004

2004/7/22-7/2 2004

2004/10/22-10/2 2004

2005/1/22-1/2 2005

2005/4/20-4/2 2005

2005/7/30-7/10 2005

2005/11/11-10/22 2005

2006/2/11-1/22 2006

*

*

*

*

*

*

*

*

*

*

Table 2: Main Changes on the Indicators of Attitudes of Palestinians in the West Bank

Indicator	كانون ثاني January 2006		تشرين اول November 2005		تموز July*		نيسان April*		كانون ثاني January*		تشرين اول *October %		تموز July %		أيار May*(%)		نيسان April* (%)		أذار *March (%)		
	خلال الستة شهور القادمة Next six Months	خلال الشهر القادم Next Month	خلال الستة شهور القادمة Next six Months	خلال الشهر القادم Next Month	خلال الستة شهور القادمة Next six Months	خلال الشهر القادم Next Month	خلال الستة شهور القادمة Next six Months	خلال الشهر القادم Next Month	خلال الستة شهور القادمة Next six Months	خلال الشهر القادم Next Month	خلال الستة شهور القادمة Next six Months	خلال الشهر القادم Next Month	خلال الستة شهور القادمة Next six Months	خلال الشهر القادم Next Month	خلال الستة شهور القادمة Next six Months	خلال الشهر القادم Next Month	خلال الستة شهور القادمة Next six Months	خلال الشهر القادم Next Month	خلال الستة شهور القادمة Next six Months	خلال الشهر القادم Next Month	
Percentage of households who expect better life	35.2	31.1	28.8	25.5	24.3	25.5	35.6	34.6	43.7	39.4	19.9	19.2	31.2	32.5	18.2	16.7	28.3	27.2	24.5	24.2	نسبة الأسر المتفائلة بتحسين الوضع العام للأسرة
Percentage of households who expect better mobility (less mobility restrictions)	27.3	25.2	22.3	20.5	20.4	22.0	32.0	31.2	39.4	36.0	13.9	14.2	30.4	31.7	13.5	13.1	22.9	21.6	23.0	24.2	نسبة الأسر المتفائلة بتحسين إمكانية الحركة والتنقل
Percentage of unemployed persons who are optimistic to find a job	41.6	36.4	42.8	40.4	40.1	38.8	45.0	40.6	54.0	50.7	28.5	28.1	37.5	32.4	29.9	28.0	32.4	25.8	34.6	32.8	نسبة المتعطلين المتفائلين بإيجاد فرصة عمل

* Data Collection for March 2004 took place during 1/3-28/3/2004.

* Data Collection for April 2004 took place during 6/4-20/4/2004.

* Data Collection for May 2004 took place during 6/5-20/5/2004.

* Data Collection for July 2004 took place during 2/7-22/7/2004.

* Data Collection for October 2004 took place during 2/10-22/10/2004.

* Data Collection for January 2005 took place during 2/1-22/1/2005.

* Data Collection for April 2005 took place during 2/4-20/4/2005

* Data Collection for July 2005 took place during 10/7-30/7/2005

* Data Collection for November 2005 took place during 22/10-11/11/2005

* Data Collection for January 2006 took place during 22/1-11/2/2006

.2004/3/28-3/1	2004	*
2004/4/20-4/6	2004	*
2004/5/20-5/6	2004	*
2004/7/22-7/2	2004	*
2004/10/22-10/2	2004	*
2005/1/22-1/2	2005	*
2005/4/20-4/2	2005	*
2005/7/30-7/10	2005	*
2005/11/11-10/22	2005	*
2006/2/11-1/22	2006	*

:3

Table 3: Main Changes on the Indicators of Attitudes of Palestinians in Gaza Strip

Indicator	كانون ثاني January 2006		تشرين اول November 2005		تموز 2005 July*		نيسان 2005 April*		كانون ثاني 2005 January*		تشرين اول 2004 *October %		تموز 2004 *July %		ايار 2004 May*(%)		نيسان 2004 April* (%)		آذار 2004 *March (%)		
	خلال الستة شهور القادمة Next six Months	خلال الشهر القادم Next Month	خلال الستة شهور القادمة Next six Months	خلال الشهر القادم Next Month	خلال الستة شهور القادمة Next six Months	خلال الشهر القادم Next Month	خلال الستة شهور القادمة Next six Months	خلال الشهر القادم Next Month	خلال الستة شهور القادمة Next six Months	خلال الشهر القادم Next Month	خلال الستة شهور القادمة Next six Months	خلال الشهر القادم Next Month	خلال الستة شهور القادمة Next six Months	خلال الشهر القادم Next Month	خلال الستة شهور القادمة Next six Months	خلال الشهر القادم Next Month	خلال الستة شهور القادمة Next six Months	خلال الشهر القادم Next Month	خلال الستة شهور القادمة Next six Months	خلال الشهر القادم Next Month	
Percentage of households who expect better life	63.5	59.5	45.1	42.8	48.9	44.2	54.2	49.4	52.0	46.7	27.3	24.1	35.8	28.2	24.3	21.3	36.8	29.0	34.6	30.1	نسبة الأسر المتفائلة بتحسن الوضع العام للأسرة
Percentage of households who expect better mobility (less mobility restrictions)	59.0	56.4	47.6	46.7	53.0	45.4	40.8	36.9	35.4	30.9	24.4	20.9	20.5	12.3	12.6	7.3	18.4	7.4	16.1	7.3	نسبة الأسر المتفائلة بتحسين إمكانية الحركة والتنقل
Percentage of unemployed persons who are optimistic to find a job	56.0	49.5	49.9	39.7	53.3	37.4	46.2	30.5	49.7	59.1	28.7	26.3	46.2	39.9	44.2	41.4	33.0	17.9	47.1	33.9	نسبة المتعطلين المتفائلين بإيجاد فرصة عمل

* Data Collection for March 2004 took place during 1/3-28/3/2004.

* Data Collection for April 2004 took place during 6/4-20/4/2004.

* Data Collection for May 2004 took place during 6/5-20/5/2004.

* Data Collection for July 2004 took place during 2/7-22/7/2004.

* Data Collection for October 2004 took place during 2/10-22/10/2004.

* Data Collection for January 2005 took place during 2/1-22/1/2005.

* Data Collection for April 2005 took place during 2/4-20/4/2005

* Data Collection for July 2005 took place during 10/7-30/7/2005

* Data Collection for November 2005 took place during 22/10-11/11/2005

* Data Collection for January 2006 took place during 22/1-11/2/2006

2004/3/28-3/1

2004

*

2004/4/20-4/6

2004

*

2004/5/20-5/6

2004

*

2004/7/22-7/2

2004

*

2004/10/22-10/2

2004

*

2005/1/22-1/2

2005

*

2005/4/20-4/2

2005

*

2005/7/30-7/10

2005

*

2005/11/11-10/22

2005

*

2006/2/11-1/22

2006

*

11

(2006)

:4

Table 4: The Attitude of Palestinians Toward the Overall “Quality of Life” Enjoyed by the Households Today Compared with One Month Ago by Region (January, 2006)

Attitude	Gaza Strip	West Bank	Palestinian Territory	
	%	%	%	
A lot better today	1.7	1.8	1.8	/
Somewhat better today	9.0	13.0	11.6	
About the same/ Unchanged	57.7	52.0	54.0	
Somewhat worse today	23.4	27.0	25.8	
A lot worse today	8.1	6.1	6.8	
Don't know	0.0	0.1	0.0	
Total	100.0	100.0	100.0	

(2006)

:5

Table 5: The Attitude of Palestinians Toward the Overall “Quality of Life” Enjoyed by the Households in the Future Compared with Today and Region, (January, 2006)

Attitude	Region and Time Period						
	Gaza Strip		West Bank		Palestinian Territory		
	Next Six Months %	Next Month %	Next Six Months %	Next Month %	Next Six Months %	Next Month %	
A lot better from now	6.6	3.2	3.5	2.3	4.6	2.6	/
Somewhat better from now	56.9	56.3	31.7	28.8	40.6	38.4	
About the same /unchanged	20.3	24.6	27.5	38.9	25.0	33.9	
Somewhat worse from now	8.0	9.7	17.1	16.8	13.9	14.3	
A lot worse from now	2.4	2.2	5.5	4.4	4.4	3.6	
Don't know	5.7	4.1	14.7	8.8	11.5	7.2	
Total	100.0	100.0	100.0	100.0	100.0	100.0	

(2006)

:6

Table 6: Distribution of Palestinian Households by the Level of Disturbance Caused by Restrictions on Mobility Imposed by Israeli Military Forces and Region, (January, 2006)

Level of Disturbance	Region and Time Period						
	Gaza Strip		West Bank		Palestinian Territory		
	Past Six Months %	Past Month %	Past Six Months %	Past Month %	Past Six Months %	Past Month %	
A lot	39.9	-	26.7	22.6	31.3	22.1	
A little	21.8	26.4	29.0	29.7	26.5	29.6	
Not at all	35.6	73.6	42.0	45.9	39.7	46.4	
Don't know	2.7	-	2.3	1.8	2.5	1.9	
Total	100.0	100.0	100.0	100.0	100.0	100.0	

(2006)

:7

Table 7: Distribution of Palestinian Households by the Need of Medical Care for Households and Region, (January, 2006)

Need for medical care	Region and Period						
	Gaza Strip		West Bank		Palestinian Territory		
	Past Six Months %	Past Month %	Past Six Months %	Past Month %	Past Six Months %	Past Month %	
Yes	80.9	74.1	66.3	59.3	71.4	64.5	
No	19.1	25.9	32.0	39.5	27.5	34.7	
Don't know	-	-	1.7	1.2	1.1	0.8	
Total	100.0	100.0	100.0	100.0	100.0	100.0	

Table 8: Distribution of Palestinian Households by Ability for Household Member to Access Necessary Medical Care and Region, (January, 2006)

Ability to access medical care	Region and Time Period						
	Gaza Strip		West Bank		Palestinian Territory		
	Past Six Months %	Past Month %	Past Six Months %	Past Month %	Past Six Months %	Past Month %	
Impossible	1.0	1.0	2.0	2.1	1.6	1.6	
Very difficult	3.9	1.5	3.8	4.5	3.8	3.3	
Difficult	8.6	8.3	13.7	14.8	11.6	12.2	
Few problems	25.5	23.1	22.4	22.2	23.6	22.6	
No problem at all	61.0	66.1	57.7	56.3	59.0	60.2	
Don't know	-	0.0	0.4	0.1	0.3	0.1	
Total	100.0	100.0	100.0	100.0	100.0	100.0	

Table 9: Distribution of Palestinian Households by Ability of Household Member to Reach Work Place and Region (January, 2006)

Ability to reach place of work	Region and Period						
	Gaza Strip		West Bank		Palestinian Territory		
	Past Six Months %	Past Month %	Past Six Months %	Past Month %	Past Six Months %	Past Month %	
Impossible	1.5	0.3	0.5	0.6	0.9	0.5	
Very difficult	11.9	0.8	8.5	7.1	9.6	5.1	
Difficult	10.2	3.6	14.1	13.6	12.8	10.3	
Few problems	14.8	8.5	21.8	20.3	19.4	16.5	
No problem at all	61.6	86.8	54.6	58.2	57.0	67.4	
Don't know	-	-	0.5	0.2	0.3	0.2	
Total	100.0	100.0	100.0	100.0	100.0	100.0	

(2006)

:10

Table 10: Distribution of Palestinian Households by Ability to Cultivate Land and Region (January, 2006)

Ability to cultivate land	Region and Time Period					
	Gaza Strip		West Bank		Palestinian Territory	
	Past Six Months %	Past Month %	Past Six Months %	Past Month %	Past Six Months %	Past Month %
Impossible	15.2	5.9	4.7	5.0	6.1	5.2
Very difficult	12.7	0.5	4.2	3.1	5.3	2.8
Difficult	13.4	11.5	10.4	10.6	10.8	10.7
Few problems	11.5	13.4	9.4	9.3	9.7	9.9
No problem at all	47.3	68.6	70.5	71.3	67.4	70.9
Don't know	-	-	0.8	0.6	0.7	0.5
Total	100.0	100.0	100.0	100.0	100.0	100.0

:11

(2006)

Table 11: The Attitude of Palestinians Toward the Ability of Household Members to Move Around this Week Compared to the Last Week by Region (January, 2006)

Ability for household members to move	Gaza Strip %	West Bank %	Palestinian Territory %
Significantly easier this week	6.5	2.7	4.0
Somewhat easier this week	17.2	16.0	16.5
About the same/ Unchanged	70.2	68.0	68.8
Somewhat harder this week	4.4	9.1	7.4
Significantly harder this week	1.1	2.3	1.8
Don't know	0.6	1.8	1.4
Total	100.0	100.0	100.0

(2006)

Table 12: The Attitude of Palestinians Toward the Ability of Household Members to Move Around Next Month, Next Six Months Compared to this Week and Region, (January, 2006)

The ability of household members to move	Region and Time Period						
	Gaza Strip		West Bank		Palestinian Territory		
	Next Six Months %	Next Month %	Next Six Months %	Next Month %	Next Six Months %	Next Month %	
Significantly easier	11.8	6.6	1.9	1.9	5.4	3.5	
Somewhat easier	47.2	49.8	25.4	23.3	33.1	32.7	
About the same	32.4	35.8	38.9	48.9	36.6	44.3	
Somewhat harder	3.4	3.6	12.2	11.4	9.1	8.7	
Significantly harder	0.4	0.4	4.7	3.1	3.2	2.2	
Don't know	4.8	3.9	16.7	11.4	12.5	8.7	
Total	100.0	100.0	100.0	100.0	100.0	100.0	

(2006)

()

:13

Table 13: The Attitude of Palestinians Toward the Ability to Find a Job by Region, (January, 2006)

The Ability to find a job	Region and Time Period						()
	Gaza Strip		West Bank		Palestinian Territory		
	Next Six Months %	Next Month %	Next Six Months %	Next Month %	Next Six Months %	Next Month %	
Very optimistic	5.3	3.5	4.2	3.1	4.6	3.3	
Somewhat optimistic	50.7	46.0	37.4	33.3	42.5	38.2	
Neither optimistic	17.1	20.6	21.9	27.6	20.0	24.9	
Somewhat pessimistic	16.4	18.9	17.3	18.9	16.9	18.9	
Very pessimistic	5.8	7.1	14.0	12.5	10.9	10.4	
Don't know	4.8	3.9	5.2	4.6	5.0	4.3	
Total	100.0	100.0	100.0	100.0	100.0	100.0	

(2006)

:14

Table 14: Distribution of Palestinian Households by the Most Important Need for Household and Region, (January, 2006)

Most important need	Gaza Strip %		West Bank %		Palestinian Territory %		
	Second Need	First Need	Second Need	First Need	Second Need	First Need	
Food	19.4	30.6	19.8	40.6	19.7	37.1	
Clothes	12.0	0.4	10.2	0.6	10.8	0.5	
Education	10.8	7.9	13.8	8.5	12.8	8.3	
Employment	12.7	29.8	13.2	16.7	13.0	21.3	
Financial assistance	29.4	16.3	21.9	22.3	24.5	20.2	
Health	10.3	4.6	16.9	5.9	14.6	5.5	
Housing	4.4	7.0	3.6	4.2	3.8	5.2	()
Entertainment activities	0.8	2.5	0.3	0.7	0.5	1.3	
Other	0.2	0.9	0.4	0.4	0.3	0.6	
Total	100.0	100.0	100.0	100.0	100.0	100.0	

(كانون ثاني 2006)

:15

Table 15: Distribution of Palestinian Households by the Most Important Need of Locality and Region, (January, 2006)

The Most Important Needs	Gaza Strip %	West Bank %	Palestinian Territory %	
Create jobs	71.3	50.1	57.5	
Health Services	4.9	8.6	7.3	
Food assistances	4.5	4.3	4.4	
Education Services	2.4	5.0	4.1	
Infrastructure Project	15.2	19.4	17.9	
No Need	1.1	7.2	5.1	
Don't know	0.5	5.4	3.7	
Total	100.0	100.0	100.0	

(2006)

Table 16: Distribution of Palestinians by their Knowledge about Development Projects Conducted in the Community by Donors and Region, (January, 2006)

Knowledge	Gaza Strip %	West Bank %	Palestinian Territory %
Yes	8.9	14.7	12.7
No	89.0	68.4	75.6
Don't know	2.1	16.9	11.7
Total	100.0	100.0	100.0

(2006)

:17

Table 17: The Attitude of Palestinians Toward the Satisfaction on the Development Projects Conducted in the Community and Region, (January, 2006)

Stratification level	Gaza Strip %	West Bank %	Palestinian Territory %
Very satisfied	26.2	30.2	29.2
Somewhat satisfied	45.4	46.4	46.2
Somewhat unsatisfied	11.6	10.5	10.7
Very unsatisfied	14.0	12.6	13.0
Don't know	2.8	0.3	0.9
Total	100.0	100.0	100.0

:18

(2006)

Table 18: Distribution of Palestinians by the Most Important Infrastructure Needs in the Community and Region, (January, 2006)

The most important needs	Gaza Strip %	West Bank %	Palestinian Territory %
Electricity	6.8	6.6	6.6
Roads	23.7	20.1	21.3
Sewage disposal	24.0	15.1	18.2
Water supply	6.1	8.2	7.5
Schools	6.4	7.5	7.1
Health clinics / hospitals	10.6	15.1	13.5
No Need	21.0	21.4	21.3
Don't know	1.5	6.0	4.4
Total	100.0	100.0	100.0