

2010

2006

.2011 - 1432 ©

.2010

.2011

1647 :

(970/972) 2 298 2700 :

(970/972) 2 298 2710 :

1800300300 :

diwan@pcbs.gov.ps :

<http://www.pcbs.gov.ps> :

•

•

•

•

•

2010

2010

2009

2010

2011

2010

15		-1
18		-2
19		-3
23		-4
25		-5
26	()	-6
27		-1.6
28		-2.6
29		-7
31		-8
32		-9
32		-1.9
33		-2.9
35		-10
36		-11
36		-12
36		-1.12
37		-2.12
37		-3.12
37		-4.12
37		-5.12
40		-6.12

16	2009	2010		1
18	(2010-2004)			2
19	(2010-2004)		15	3
22		(2010 2009)		4
24				5
			(2010 2009)	
26				6
			(2010 2009)	
26			(2010 2009)	7
27	(2010-2004)			8
29		2009		9
30		2009		10
35	(2010-2004)			11
36	(2010-2004)			12
36		2010		13
40	(2010-2008)			14
40		(2010-2004)		15
41		(2010 2009)		16

15	(2010-2004)	1
17	(2010)	2
17	(2010)	3
18	(2010-2004) ()	4
20	(2010-2004)	5
20	(2010-2004)	6
21	(2010-2004)	7
22	2010	8
22	2010	9
23	(2010-2005)	10
23	(2010-2004)	11
25	(2010 2009)	12
25	(2010 2009)	13
27	(2010-2004)	14
28	(2010-2004)	15
31	(2010-2004)	16
31	(2010-2004)	17
32	(2010-2004)	18
33	(2010-2004)	19
33	2009	20
33	2010	21
34	(2010-2004)	22
35	(2010-2004)	23
38	(2010-2004)	24
39	(2010 2009)	25
39	(2010-2004)	26
41	(2010-2004)	27

2010

2009 %0.4

%3.1

2010

.2009 %9.3

%3.75

2009

2010

2010

.%35.6

%6.1

2010

.2009

%25.7

2010

%3.7

2010

%23.7

2009

%24.5

2010

%18.3)

%25.7

(

%38.0

%19.4)

2009

%26.2

%.2.1

%16.2

.(

%38.3

15.1

2010

/

14.1

2009

%85.0

. /

2010

998.9

%23.4

2010	.	809.4	
1.9			.2009
.2009	%21.6		
)			
	.)%2.7	(%16.5 2010
)
	%9.3	(2010
2010		1,822.9	
		2009	2,473.1
	6,109.7		%26.3
	%106	840.7	
		719.0	2010
	.	.)%16.9	2009
2			
			2010
		%6.3	3,989.2
			.2009
	%14.2		
6.8	2010		2010
6.0			%8.8
	.2009		.)%7.0
3			
		2010	(
		2010)
	%6.6		
2010	465	1	
74.3			
)	
	%1.8	%39.0	(
.2010	4.5		

: 2
3

(J1)

1

2010

:1

-1

(2010-2004)

(2010-2008)

%9.3 2010

.2008

2006 %5.4

2007

2006 .%8.0

%11.4

2005 %5.2

%3.5

%20.1

160

%8.6

2005

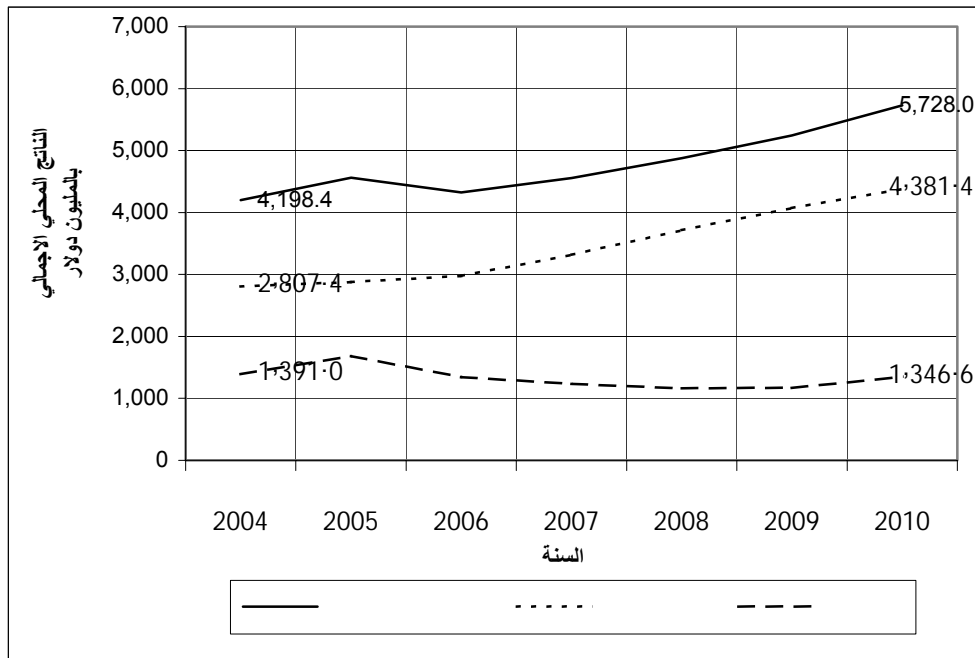
.2004

%2.5

%21.0

(2010-2004)

:1



2010

2010 %9.3

2009

2010

2009

2010

:1

()

			2010	2009
34.6	17.2	22.8	360.0	293.2
-3.8	-5.7	-5.5	706.6	747.7
232.2	13.9	35.6	525.6	387.7
12.7	11.9	12.0	634.7	566.5
12.9	5.7	6.0	446.5	421.0
2.2	11.9	10.4	297.2	269.1
4.1	2.9	3.3	1,196.0	1,157.5
3.2	8.5	6.4	798.8	750.6
15.1	7.6	9.3	5,728.0	5,241.3

الضفة الغربية تشهد نمواً في معظم الأنشطة الاقتصادية، ساهم نشاط تجارة الجملة والتجزئة بنسبة 18.0% من هذا النمو.

2009

2010

%7.6

%18.0

%5.7

%50.6

2010

%15.1

%232.2

2009

%34.6

%20.9

%13.9

%9.2 %11.1

%12.3

%9.4

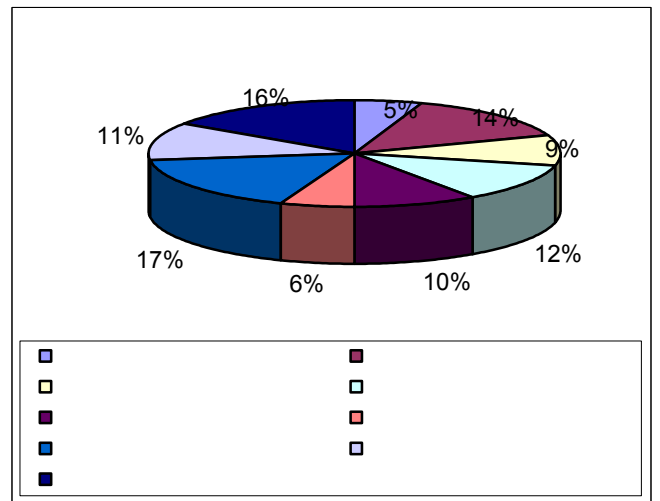
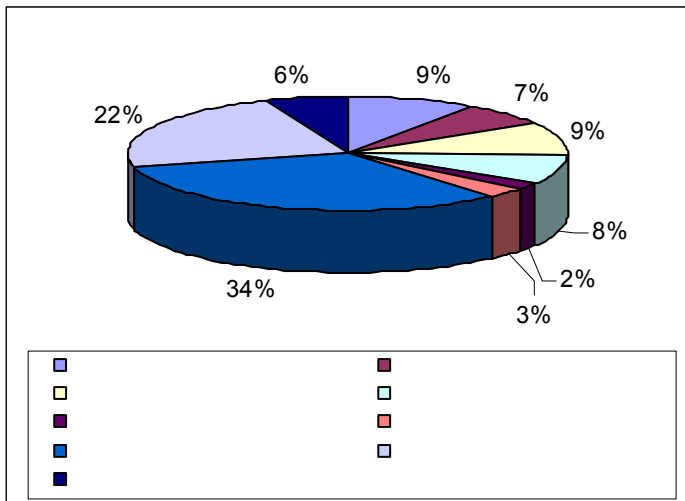
.%5.3

:3

:2

(2010)

(2010)



1,502.4 2010 (2)

.2009 %6.1

(2010-2004)

:2

2010	2009	2008	2007	2006	2005	2004
5,728.0	5,241.3	4,878.3	4,554.1	4,322.3	4,559.5	4,198.4
3,813	3,702	3,597	3,495	3,389	3,287	3,188
1,502.4	1,415.7	1,356.3	1,303.2	1,275.4	1,387.2	1,317.0
6.1	4.4	4.1	2.2	-8.1	5.3	-

.1967

*

(2010-2004)

876.7

2010

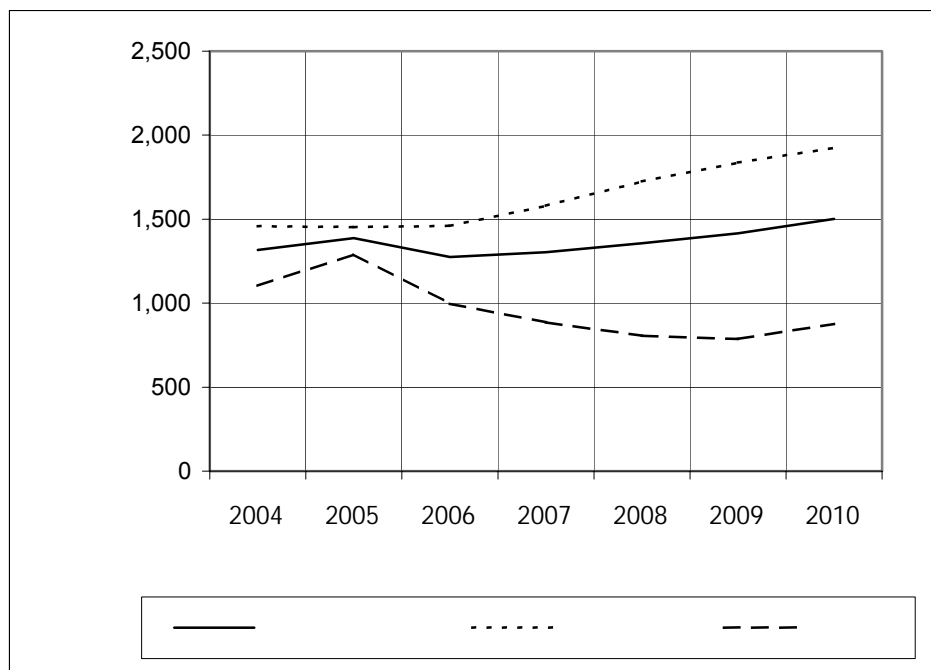
2010

1,924.6

(2010-2004)

()

:4



3- سوق العمل

جدول 3: بعض مؤشرات سوق العمل للأفراد 15 سنة فأكثر في الأراضي الفلسطينية، (2010-2004)

2010	2009	2008	2007	2006	2005	2004	
976	951	908	882	834	789	752	()
41.1	41.6	41.2	41.7	41.0	40.4	40.1	
744	717	666	691	637	603	550	()
3.7	7.6	-3.5	8.5	5.5	9.6	-	
91.7	91.3	87.0	81.9	81.5	77.0	73.8	()
71.1	73.4	71.9	74.4	75.4	74.0	73.8	*
23.7	24.5	26.6	21.7	23.7	23.5	26.8	
15,129.9	14,106.0	14,147.7	12,283.3	12,936.4	14,885.5	14,922.4	/() ¹

*

انخفاض نسبة المشاركة في القوى العاملة خلال عام 2010 مقارنة مع عام 2009

%(41.7-40.1)

%41.6	%41.1	2010	2010-2004
		2010-2004	2009
.2009	951	976	2010

ارتفاع في عدد العاملين خلال عام 2010 مقارنة مع عام 2009

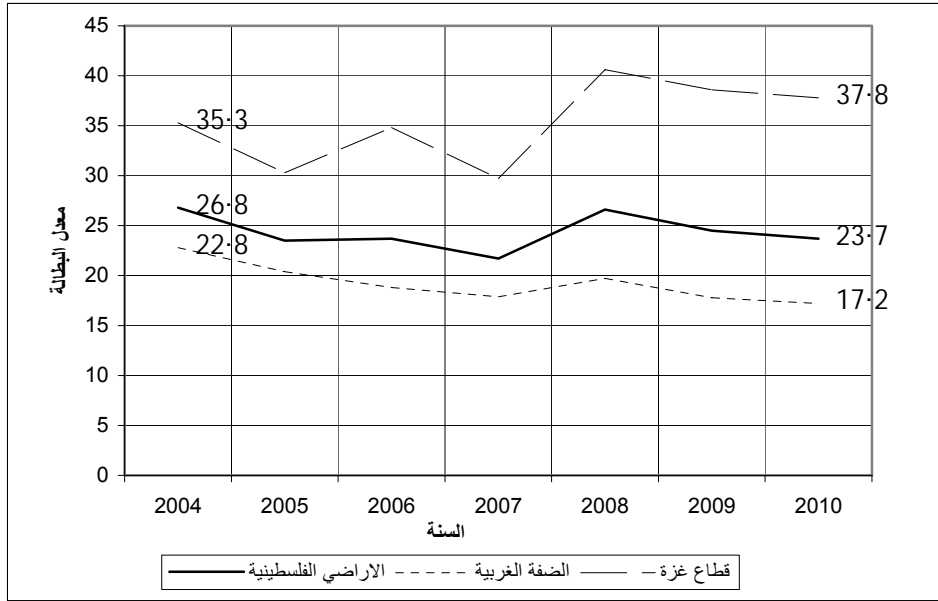
%3.5	2009	%3.7	2010
	2008	%7.6	2009
		2007-2004	

الأراضي الفلسطينية تشهد تذبذباً في معدل البطالة

2007	2010-2004	2010	%21.7
	2010	.2009	%24.5
	2010	%23.7	
2010		%17.8	%17.2
			.%37.8

(2010-2004)

:5



زيادة مستمرة في معدل الأجر اليومي الاسمي وتذبذب في معدل الأجر اليومي (الحقيقي)

2010-2004

2009

91.3

91.7

2010

(6:)

2010-2004

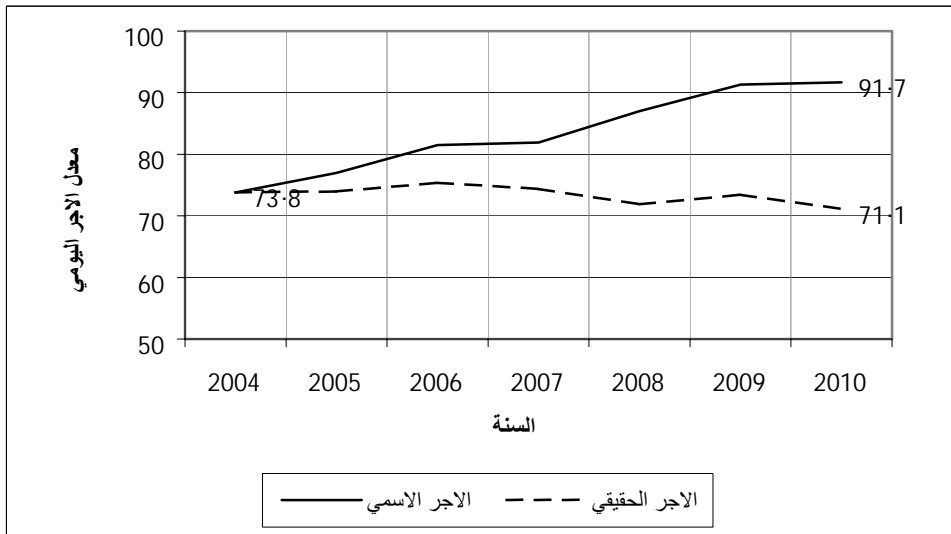
%3.1

2009

2010

(2010-2004)

:6



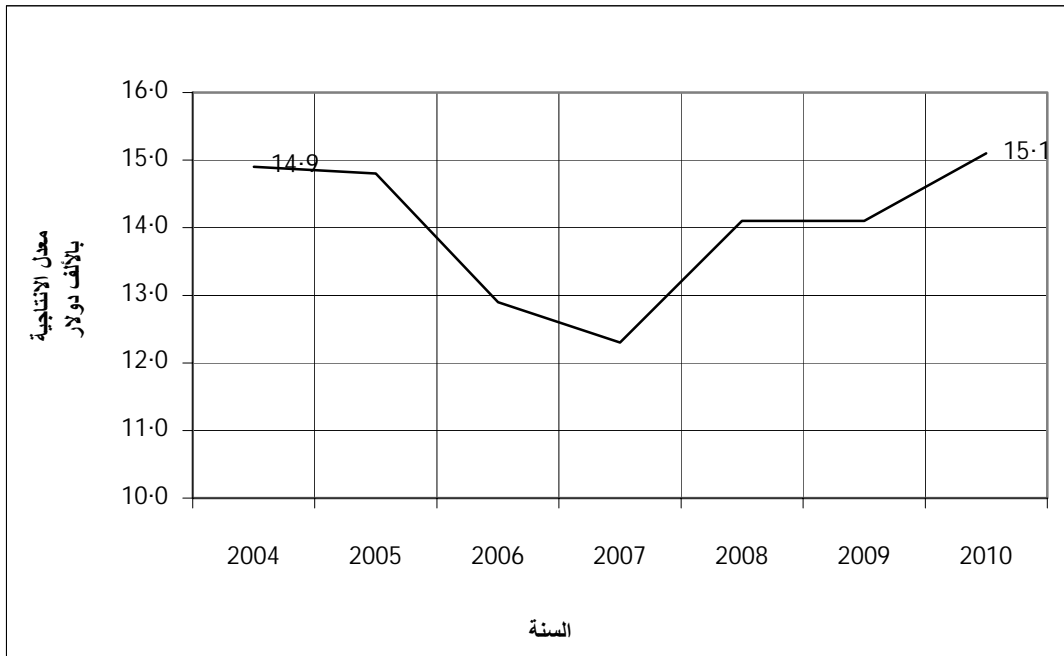
2009

2010

2007 2004 2010-2004
2007 12.3 2007
15.1 2010
14.9 2004

(2010-2004)

:7



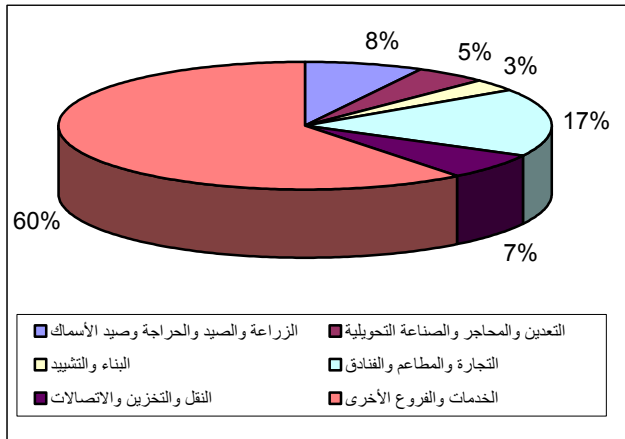
2010

(%60.0 %30.0) %38.3

.9 8

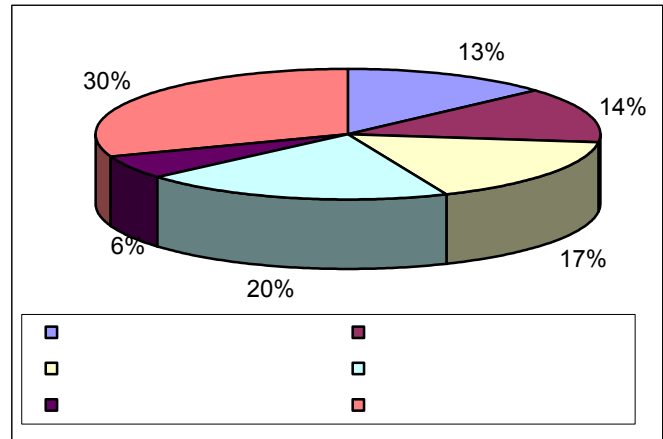
:9

2010



:8

2010



(2010-2009)

:4

			2010	2009
24.2	1.1	4.3	87,800	84,200
-7.9	-1.4	-2.1	84,800	86,600
235.3	11.9	16.2	98,100	84,400
-3.2	7.0	4.4	143,500	137,500
19.6	4.3	8.3	44,400	41,000
-2.2	2.6	0.7	285,400	283,500
2.4	4.2	3.7	744,000	717,200

%16.2 2010

()

2009

.2010

%11.9 2010

%1.4

2010 %235.3

2009

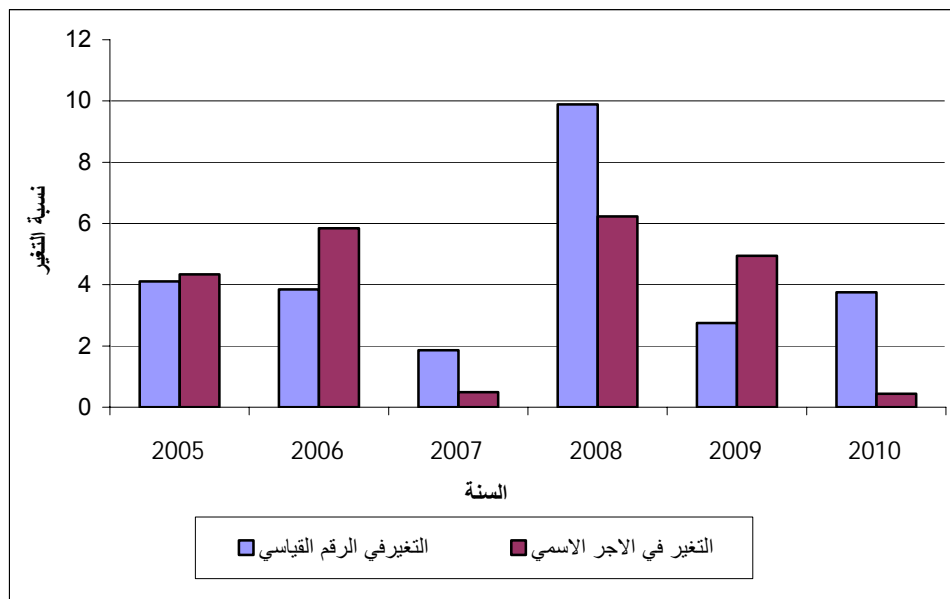
2009

2009

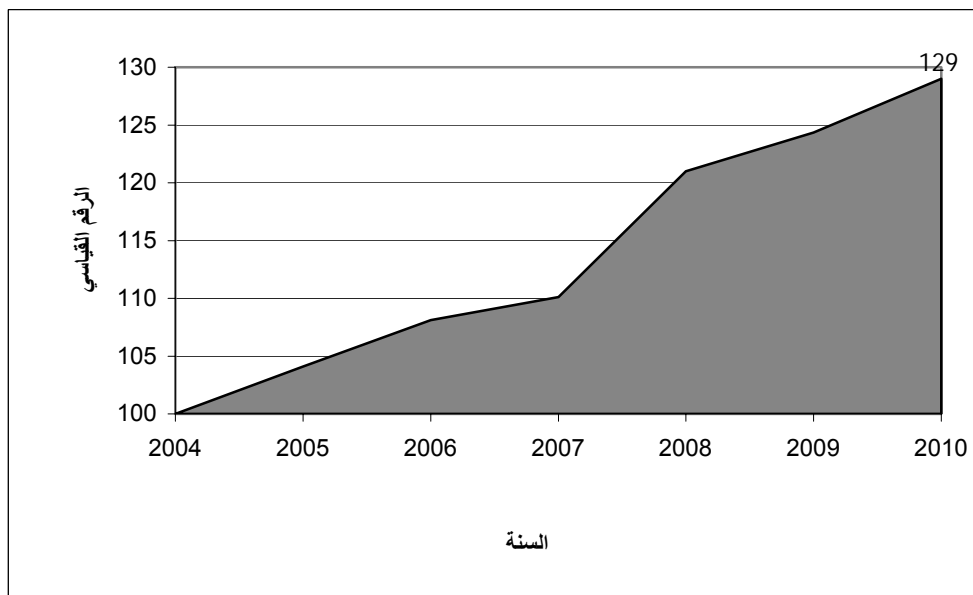
2010

2010
24.2 %
-4
2004
24.0 %29.0 2010
2010 2008 2007 %
.11 10

(2010-2005) :10



(2010-2004) :11



%37.6

%6.9

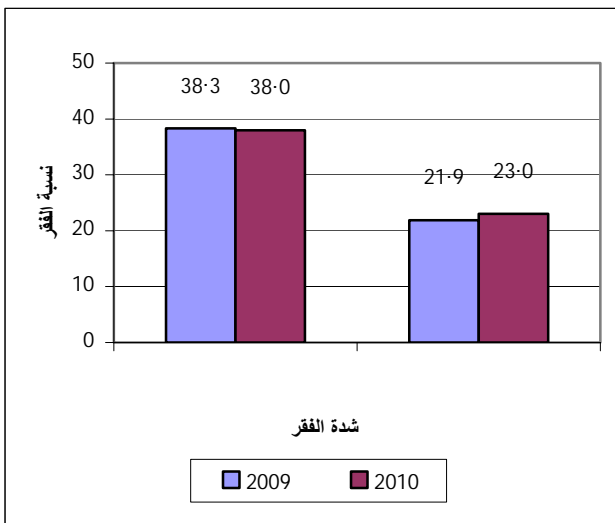
%9.9

%10.4

-5

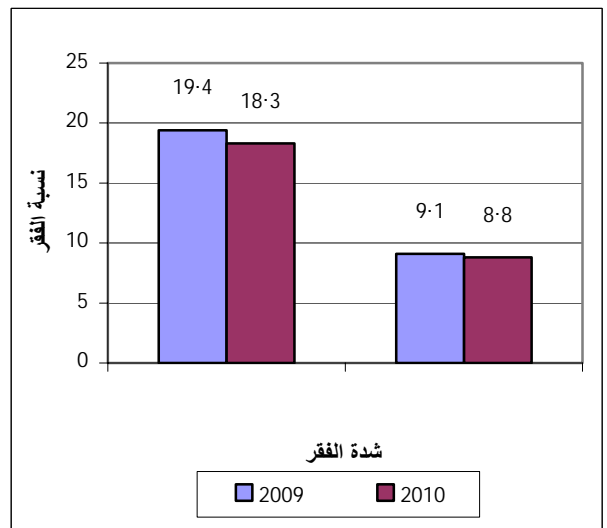
:13

(2010-2009)



: 12

(2010-2009)



2010

) %25.7

2010

%14.1

.(

%38.0

%18.3

%8.8)

%19.4)%26.2

2009

.(

%23.0

.(

%38.3

2010

%16.8

2010

.(

%21.2

%10.7)

%17.9

2009

.(

%22.1

%12.6)

2010-2009

2010	2009	2010	2009	2010	2009
48.2	49.2	20.5	22.2	30.9	31.9
33.0	36.7	11.0	12.1	19.2	21.0

.()

2009 2010

جدول7: فجوة وشدة الفقر حسب المنطقة، 2010-2009

2010	2009	2010	2009	2010	2009
10.3	10.1	4.1	4.2	6.4	6.3
3.9	3.8	1.4	1.4	2.4	2.3

*

1() -6

2

1,516 2004
 2005 (2008-2005)
 2008 2006 2004 %24.0

1 () :

2

535.1

736.8

2009

2003

2010

(2010-2004)

:8

()

*2010	2009	2008	2007	2006	2005	2004
998.9	809.4	737.9	598.5	579.2	486.7	421.4
1,822.9	2,473.1	3,570.6	2,505.5	1,623.0	1,299.4	895.3
840.7	719.0	397.5	400.2	273.5	416.8	667.9
1,377.6	1,266.1	1,167.8	1,016.0	710.3	717.1	641.1
5,366.8	5,016.8	4,961.9	4,567.3	3,805.7	3,618.4	3,337.8

*

1

-1.6

2010

%85.0

809.4

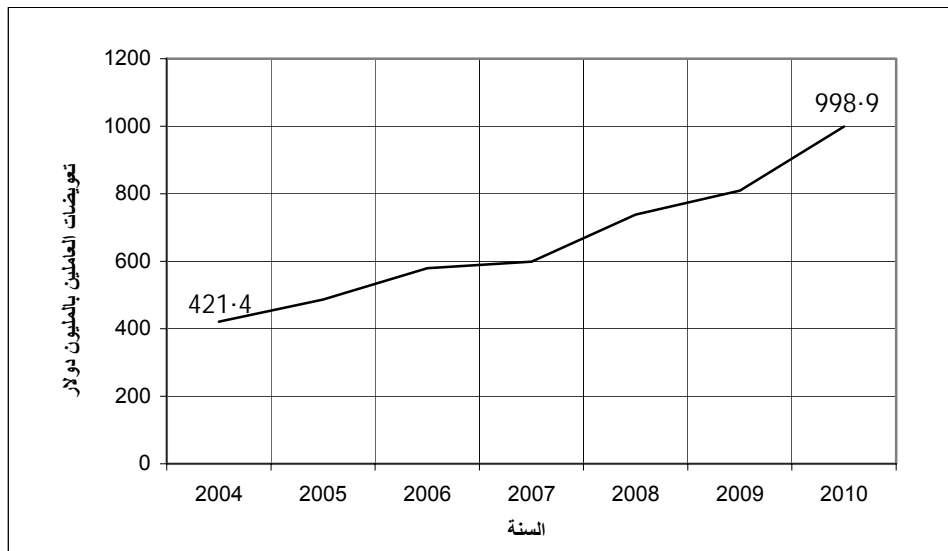
998.9

%23.4

2009

(2010-2004)

:14



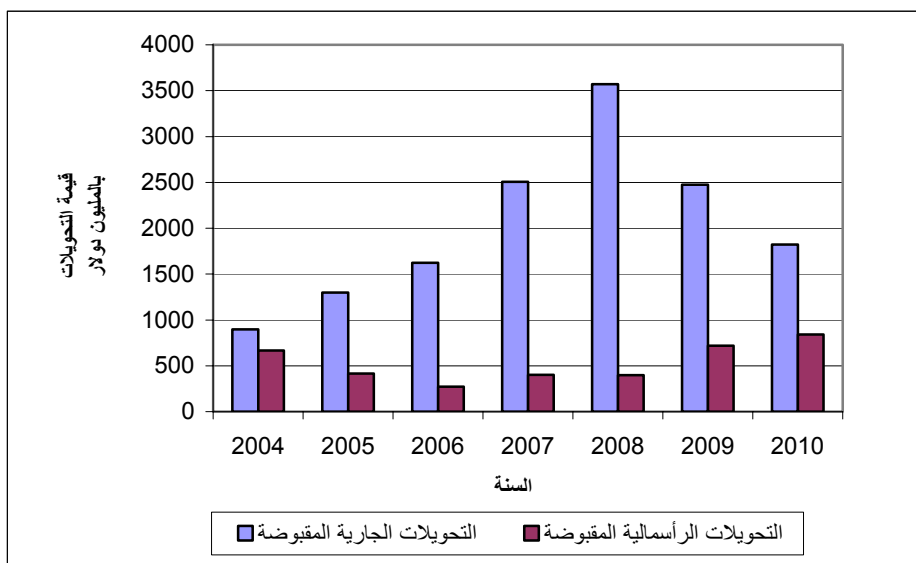
:()

1

1,822.9			2010	
	%26.3		2009	2,473.1
2009	719.0	2010	840.7	
				.%16.9

(2010-2004)

:15



1,378 2010
 %6.3 1 5,367
 .2009

%75.0

	2009	2	:9	()
النسبة المئوية*				
13.9	501,113			()
4.9	177,269			()
2.8	102,519			
2.8	102,104			
2.1	75,263			
1.1	40,519			()
1.1	39,443			
1.1	38,362			
1.0	36,441			
1.0	35,624			
31.9	1,148,658			

*

%31.9

4,447

(J1)

()

_____ 1
) - = 2

%85

%38.4

(10)

2009

1

:10

()

*

10.3	53,460	
5.4	27,897	
4.0	20,478	
3.7	18,936	
3.3	17,123	()
2.8	14,538	
2.4	12,349	()
2.4	12,248	
2.3	11,668	
2.0	10,281	
38.4	198,977	

*

:()

(2010-2004)

.%6

()

1

*(2010-2004)

:16



2010 *

()

-8

()

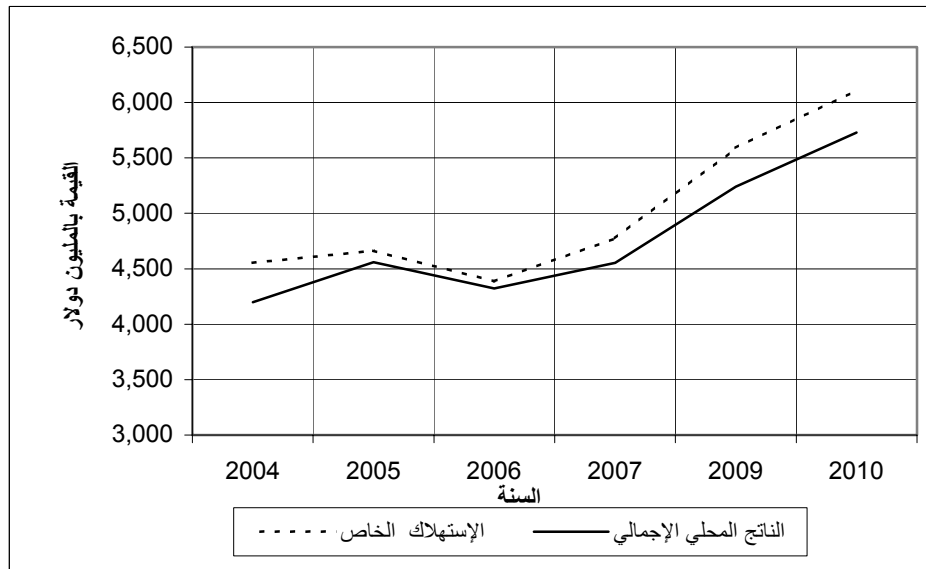
%106

6,109.7

2010

(2010-2004)

:17



9- القطاع الحكومي

%22.2

2006

(2010-2008)

2007

2008

-1.9

2010

2010

%39.0

(

)

%21.6

2010

1.9

2010

2009

(18:) 2009

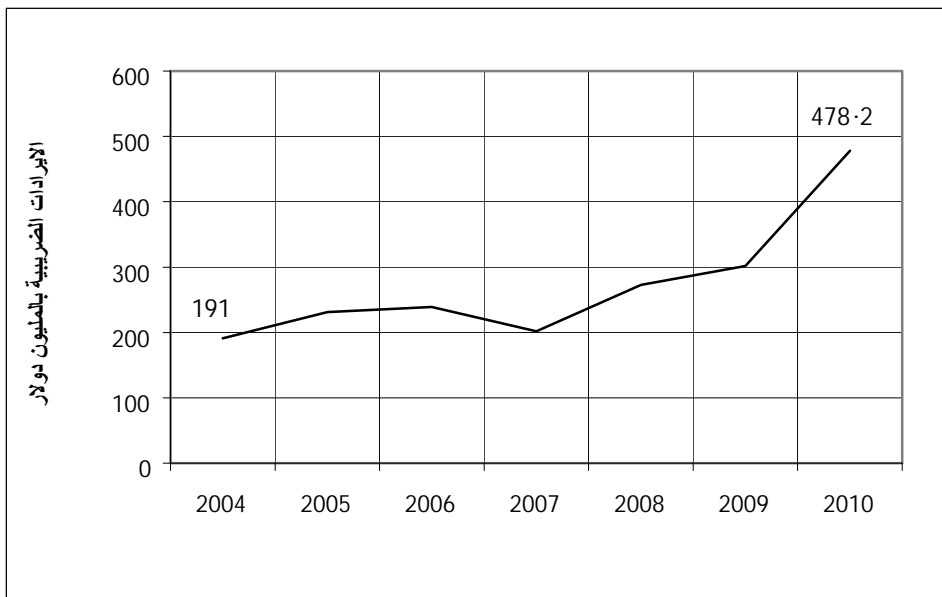
%59.0

478.2

2004

(2010-2004)

:18



2010

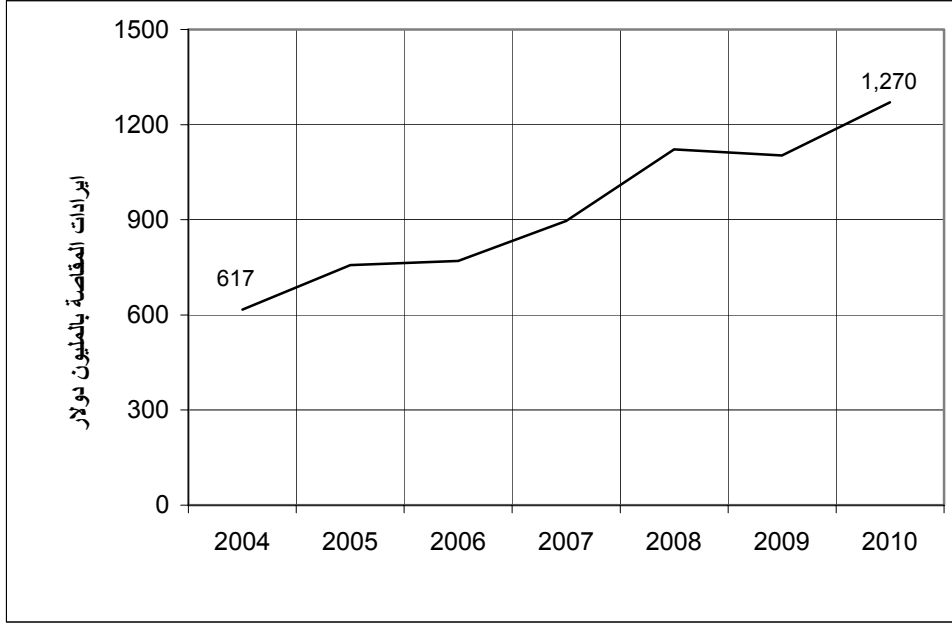
2009 %15.1 2010

2010 1,269.4

.2009

1,103.2

شكل 19: إجمالي إيرادات المقاصة خلال الفترة، (2010-2004)



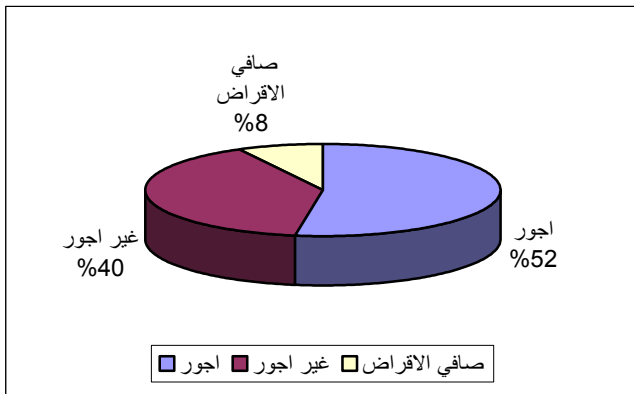
2.9- الإنفاق الحكومي

52.0

%

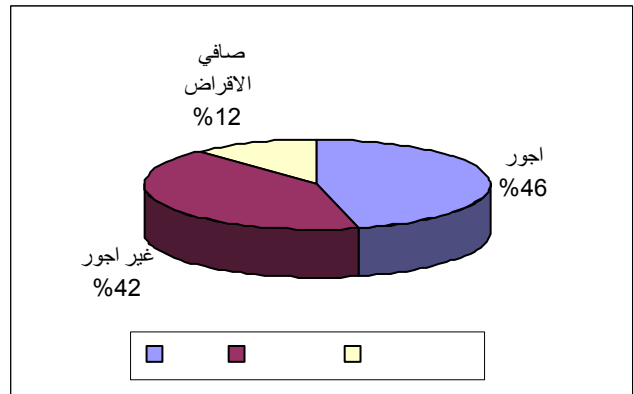
2010

:21



2009

:20



2010

()

2010

3,101.7

%2.7

2009

3,189.8

%10.9

2010

%8.2

1,626.8

301.0

2010

2010 2009

.2009

215.5

2010

2009

2010

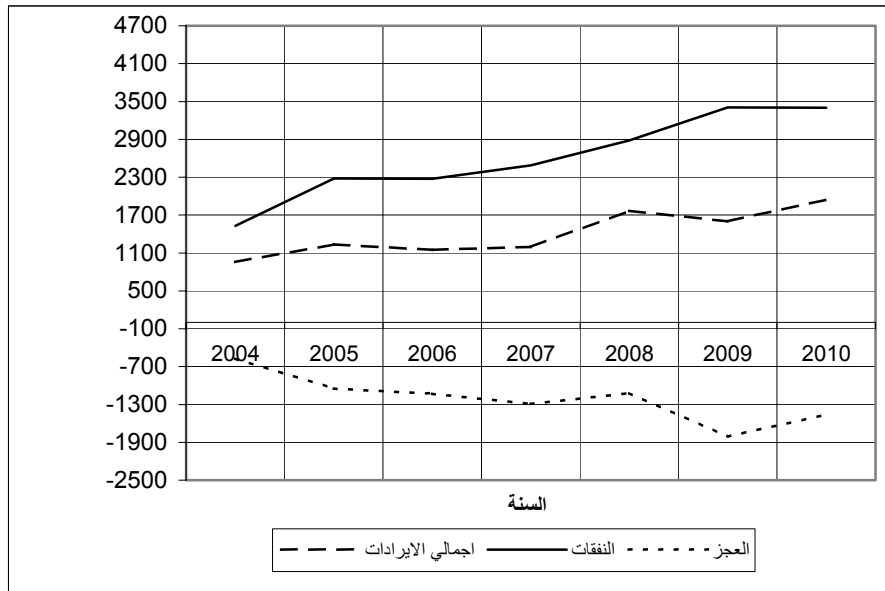
%19.3

1.5

2010

(2010-2004)

:22



2010

2010

1,354.9

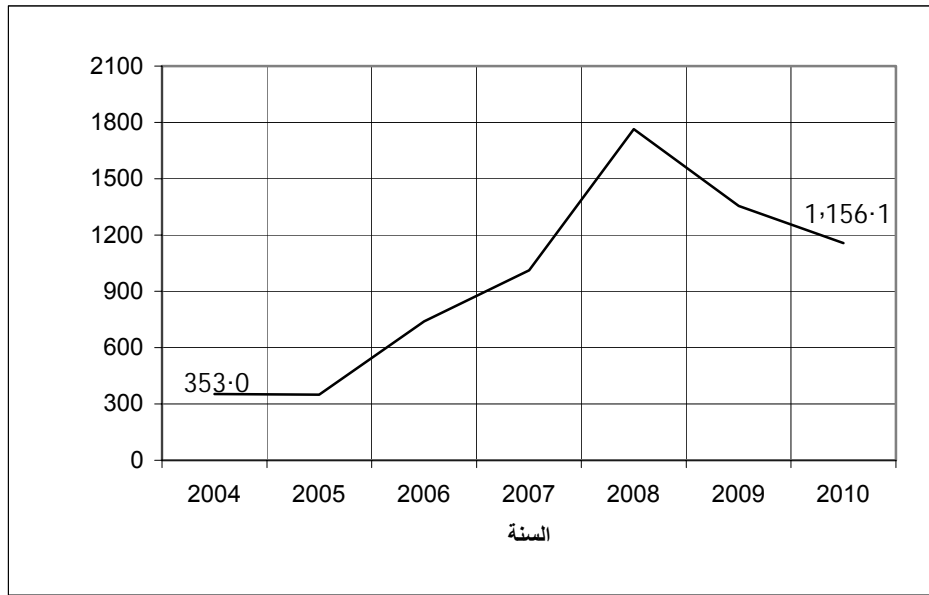
1,156.1

%14.6

.2009

(2010-2004)

:23



)

%46.2

(

.()

** (2010-2004)

:11

2010	2009	2008	2007	2006	2005	2004	
750.9	585.1	759.1	323.0	396.0	476.0	337.0	
1,626.8	1,466.7	1,453.4	1,283.0	1,193.0	1,001.0	870.0	
46.2	39.9	52.2	25.2	33.2	47.5	38.7	*

/ : *

2010-2004 : **

-10

2010

%14.2

2009

6.0

6.8

.2010

%9.5

2010

57

2010

92

2009

%62.0

.2009

11- القطاع الخاص

%77.8

%6.6	2010	465	.
2010		4,456.4	2009
		74.3	

(2010-2004)

:12

2010	2009	2008	2007	2006	2005	2004	
465	436	408	446	411	391	364	() *
4,456.4	4,078.4	3,746.8	3,560.7	3,284.4	3,520.2	3,260.3	()
16,278.3	15,982.2	15,969.7	13,364.4	14,260.2	15,552.4	15,402.2	(/)
74.3	64.6	63.8	67.3	66.7	67.1	68.8	** ()

* لا يشمل العاملين في إسرائيل والمستوطنات وذلك الجزء من محافظة القدس الذي ضمته إسرائيل عنوة بعيد إحتلالها للضفة الغربية عام 1967.
** انظر متوسط سعر صرف الدولار الأمريكي مقابل الشيكال الإسرائيلي جدول 17 (صفحة الملحقات).

12- أبرز الأنشطة الاقتصادية وأهم خصائصها

2010

2010

:13

9.2	7.8	20.9	11.1	12.3	6.2	
525.6	446.5	1,196.0	634.7	706.6	360.0	()
15,600.7	20,374.9	7,471.1	8,548.6	16,520.3	7,444.3	(/)
57	37	271	125	73	81	() *
117.4	104.3	91.8	76.3	80.1	57.1	** ()

• لا يشمل العاملين في إسرائيل والمستوطنات وذلك الجزء من محافظة القدس الذي ضمته إسرائيل عنوة بعيد إحتلالها للضفة الغربية عام 1967.

() -1.12

%20.9 2010

271

%3.3

2010

%2.0

2009

91.8

. 2010

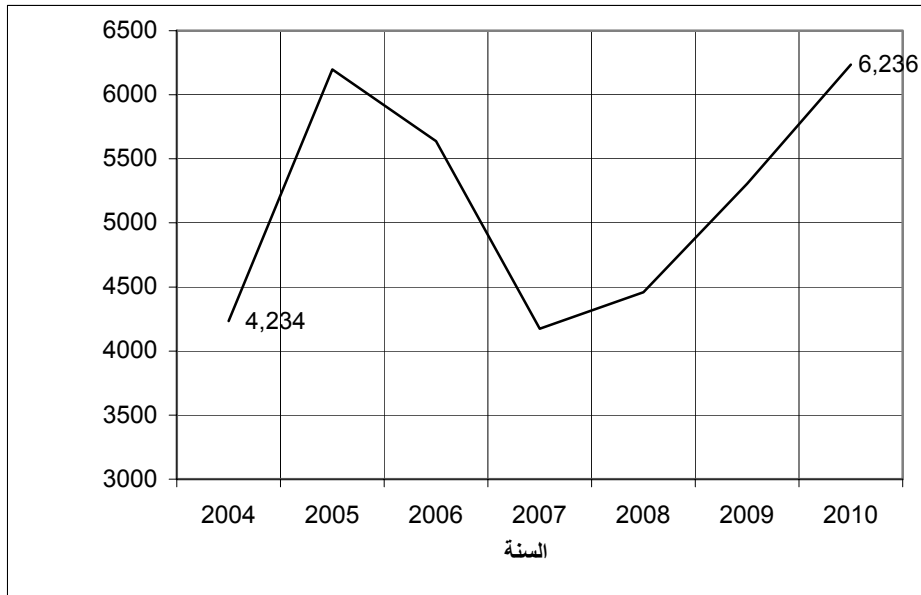
7,471.1

					-2.12
	2010	%12.3			
	2009		73		
	16,520.3		%5.5		
	80.1				
					-3.12
		(%16.0)
2010			%16.0		
	2010	%6.2			
		%6.3	%22.8		
			81	2010	
		7,444.3			
			57.1		
					-4.12
			%11.1		
	2009	%6.4	2010	125 ألف	
		%12.0			
76.3					
	8,548.6			2010	
					-5.12
	2009	2010	%35.6		
%17.5	2010				
	1.2	2010	1.3		
2010	2009		%1.6	2009	
2010		57	%26.2		
		117.4			
		15,600.7			
			2010		

2010

:

2009 2010
(2010-2004) ¹ :24



-2004

2005 2010

2008

4,173

2007

6,236

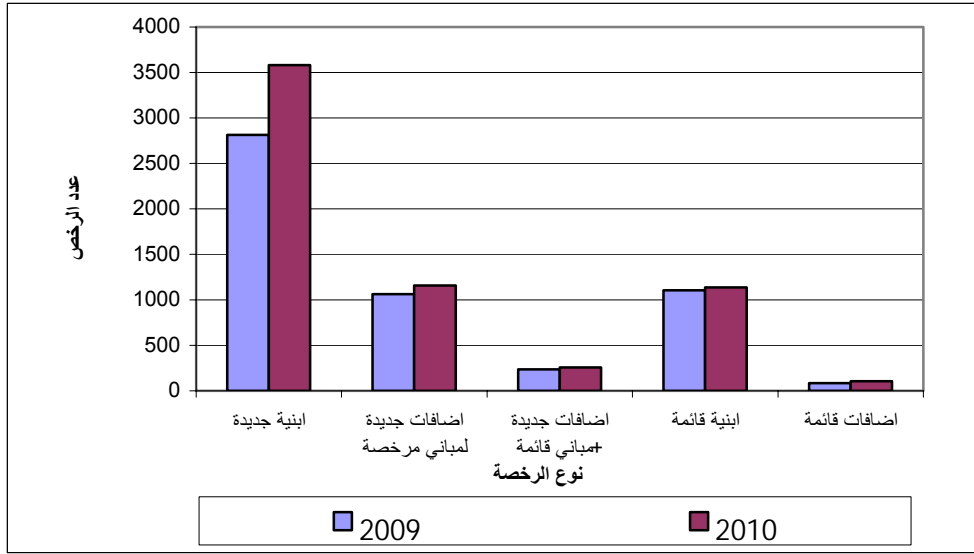
2010

2010

2010

%57.4

شكل 25: عدد رخص الأبنية الصادرة في الضفة الغربية، (2010-2009)

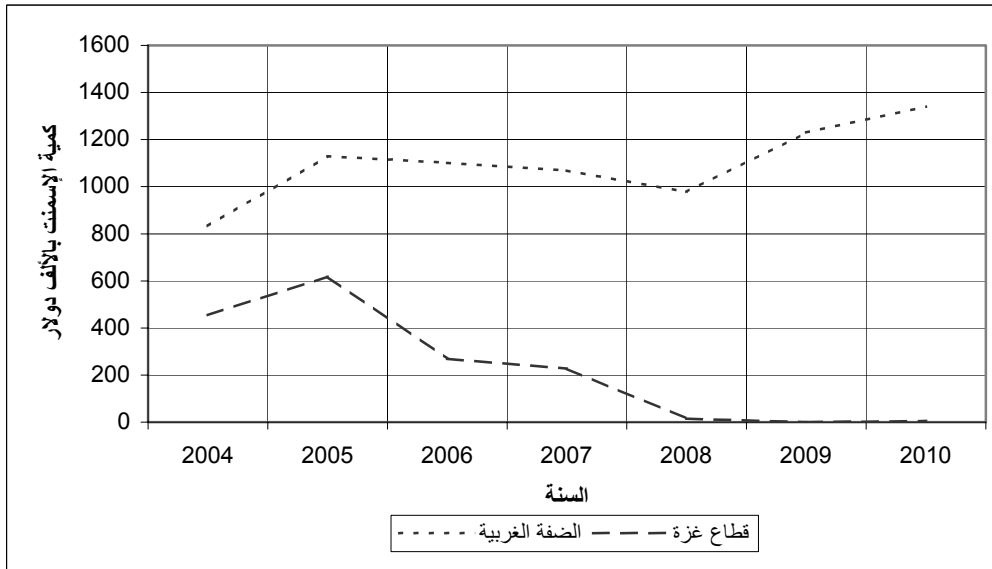


:

2009 2010

(2010-2004)

:26



2010 2006

2009

:

. %1.6

2009

2010

:14

(2010-2008)

2010	2009	2008
105.84	104.30	114.13
137.28	131.11	119.61
118.89	116.69	105.30
109.36	107.67	111.63

-6.12

%3.0

(2010-2004)

:15

2010	2009	2008	2007	2006	2005	2004
95	100	80	82	79	77	80
577	453	446	316	152	132	100 ()
1,286	1,042	1,127	673	384	350	269 ()
1,795	1,514	1,071	1,264	1,330	1,273	1,216

2010 %28.0

2009

453 ألف

577

.19.0%

2010

1,795 2010

.2009

1,514

(2010-2004)

:17

2010	2009	2008	2007	2006	2005	2004
3.73	3.92	3.60	4.11	4.46	4.49	4.48