

2000

2001 /

.2001 - 1422 ©

:

.2001

. - .2000 :

: /

. - **1647** . .

(970-2) 240 6343 :

<http://www.pcbs.org> :

(970-2) 240 6340 :

diwan@pcbs.pna.org :

(NORAD)

.(NORAD)

.2000

2001

13		.1
13		1.1
13		2.1
15		.2
19		.3
19		1.3
19		2.3
19		1.2.3
20		2.2.3
23		3.2.3
23		4.2.3
24		5.2.3
24		6.2.3
25		7.2.3
26		3.3
27		4.3
29		5.3
33		.4
33		1.4
33		1.1.4
33		2.1.4
34		3.1.4
35		4.1.4
35		5.1.4
35		2.4

37

37

37

39

43

.5

1.5

2.5

43	2000-1995	:1
45	1999	:2
46	1999-1994	:3
49	1999	:4
50		:5
		1999
52	2000	:6
53	2000	:7
54	2000	:8
55	2000	:9
56	2000	:10
57	2000	:11
58		:12
		2000
59	2000	:13
60		:14
	1000	2000
61		:15
		2000
62	2000	:16
63		:17
		2000
64		:18
		2000

65			:19
		2000	
66			:20
		2000 - 1996	
67	2000		:21
68			:22
		2000	
69	2000-1997		:23
70	2000		:24
71			:25
		2000	
72		2000	:26
73		2000	:27
74		2000	:28
75		2000	:29
76	-1996		:30
		2000	
77			:31
		2000	
78			:32
		2000	
79			:33
		2000	
80			:34
		2000	
81	200		:35
		2000	
82			:36
		2000	

20	1999	:1
20	1999	:2
21	2000	:3
21	2000	:4
22	2000	:5
22	2000	:6
22	2000	:7
23		:8
		2000
24	2000	:9
25	2000	:10
25		:11
		2000
26		12
		2000
27	2000	:13
28	2000	:14
28	2000	:15
29	2000	:16
		()
30	2000	17
30		:18
		() 2000
31	2000	:19

2000

: **1.1**

:

.1

"

"

.2

.3

.4

: **2.1**

. :
400
:
 $^3 250-100$ $^3 100-50$ () $^3 50$
 $^3 250$
.() 9 :
:" "
:
:
250 :
2200 :
250 175 :
:
:
30 :
:
24 :

)
 . 24
 :
 :
 :
 .(:
 :
 :
 (2) 90 140
 900
 2000 20 600
 :
 :
 24
 :
) 90 140
 900 (2
 600
 5 2

- - :

.

:

(2) 90 140
900

. 2 . 600

:

1.5 3

20

20-5

:

:

:

:

:

.1967

(-) :

(..)

: **1.3**

2000

%4.9

22.7

24.4

69.2

66.3

.(1) (16.95)

: **2.3**

8,310.0

: **1.2.3**

2,411.9

5,898.1

1999

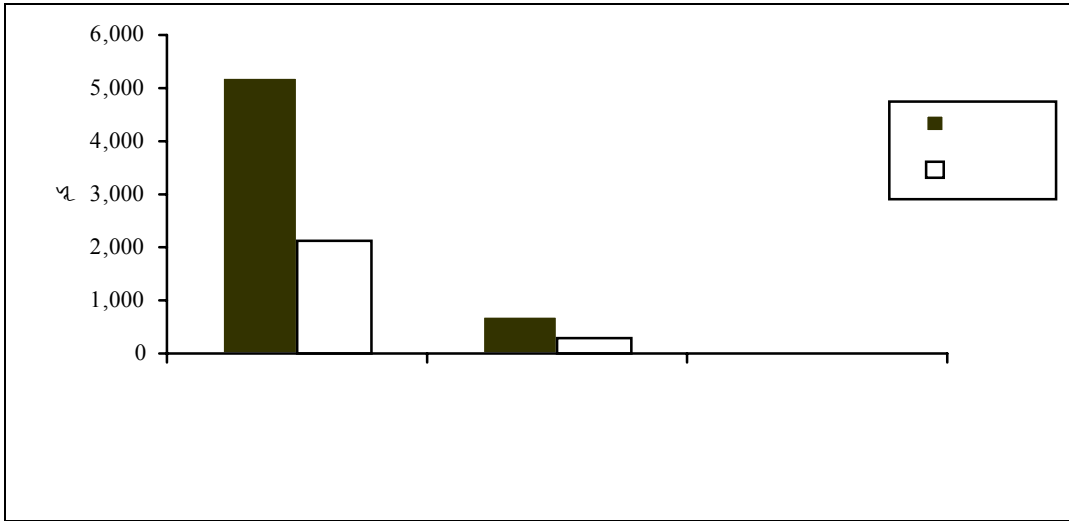
.(2) 992.0

7,318

(2 1)

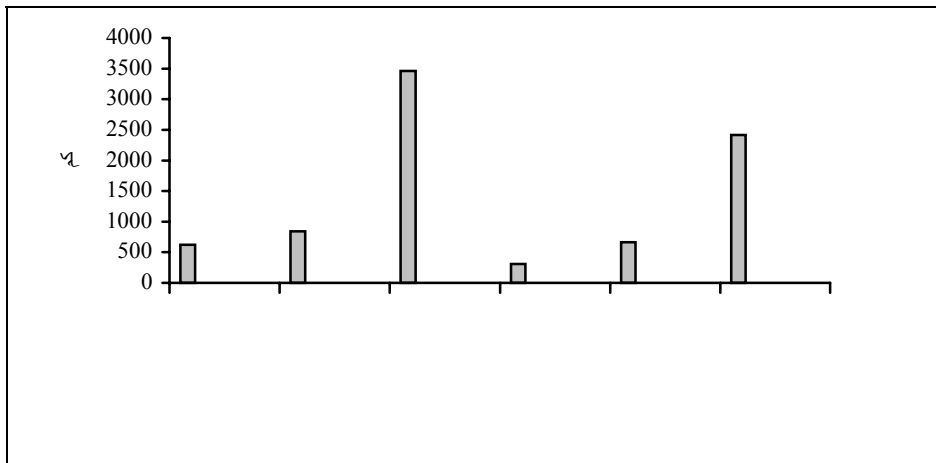
1999

:(1)



1999

:(2)



:

2.2.3

123,868

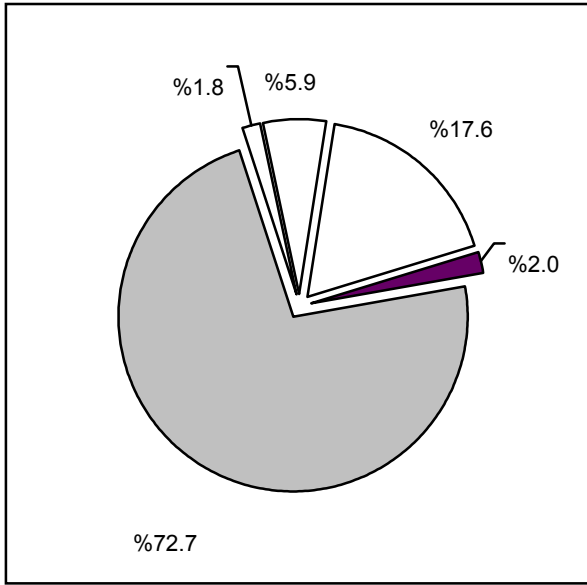
%39.6

%60.4

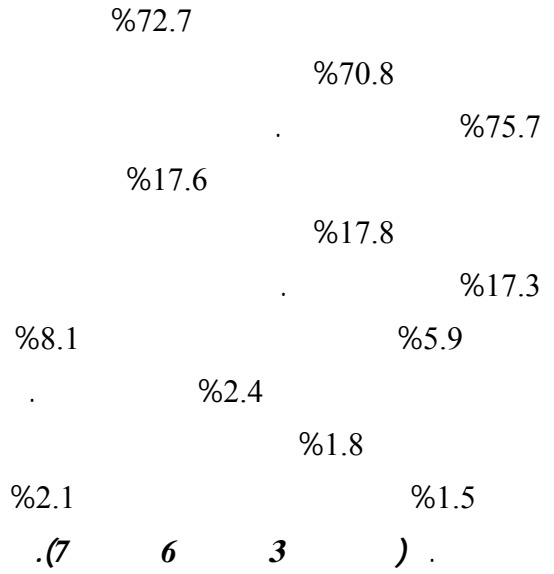
2000

:(3)

2000

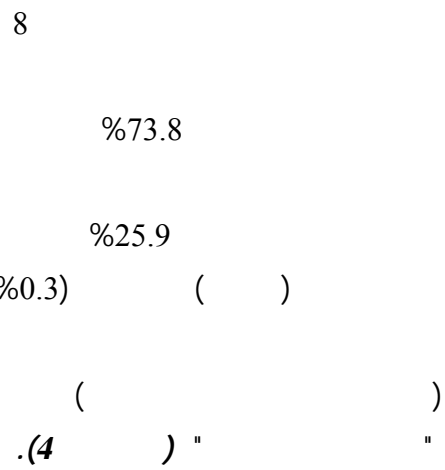
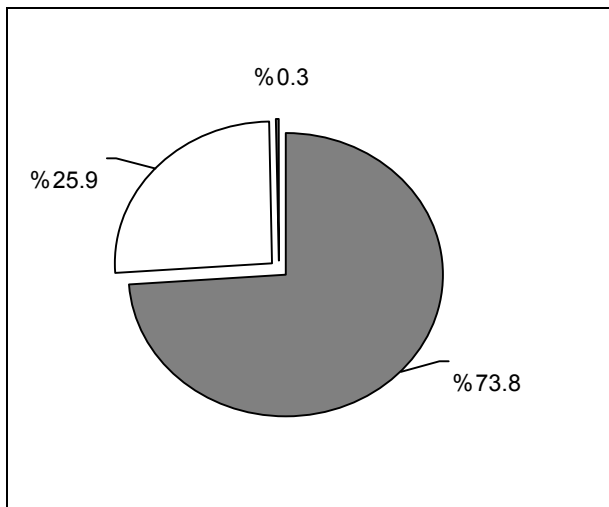


2000



:(4)

2000



%20.9

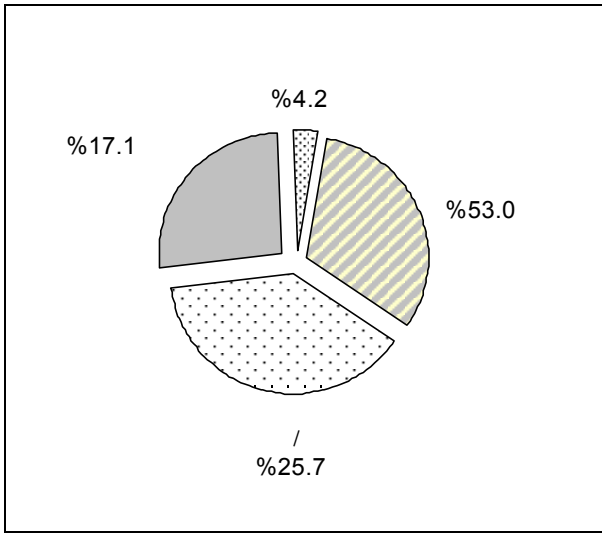
%79.1

2000

662
.(10 9)

:(5)

2000



2000

%53.0

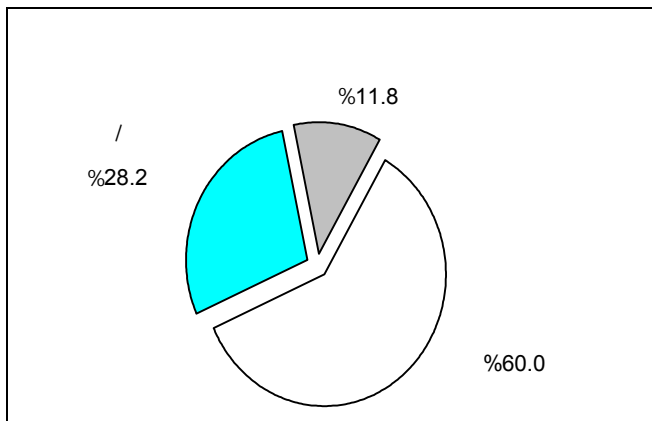
.%25.7

.%17.1

.(5) % 4.2

:(6)

2000



2000

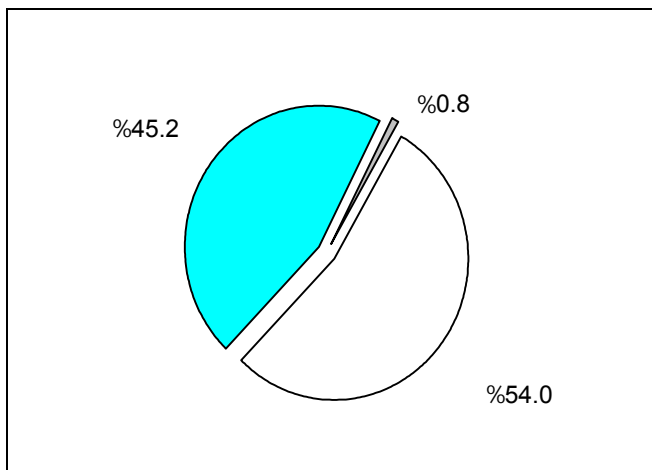
(60.0)

(%28.2)

.(6) %11.8

:(7)

2000



2000

%45.2

(%0.8)

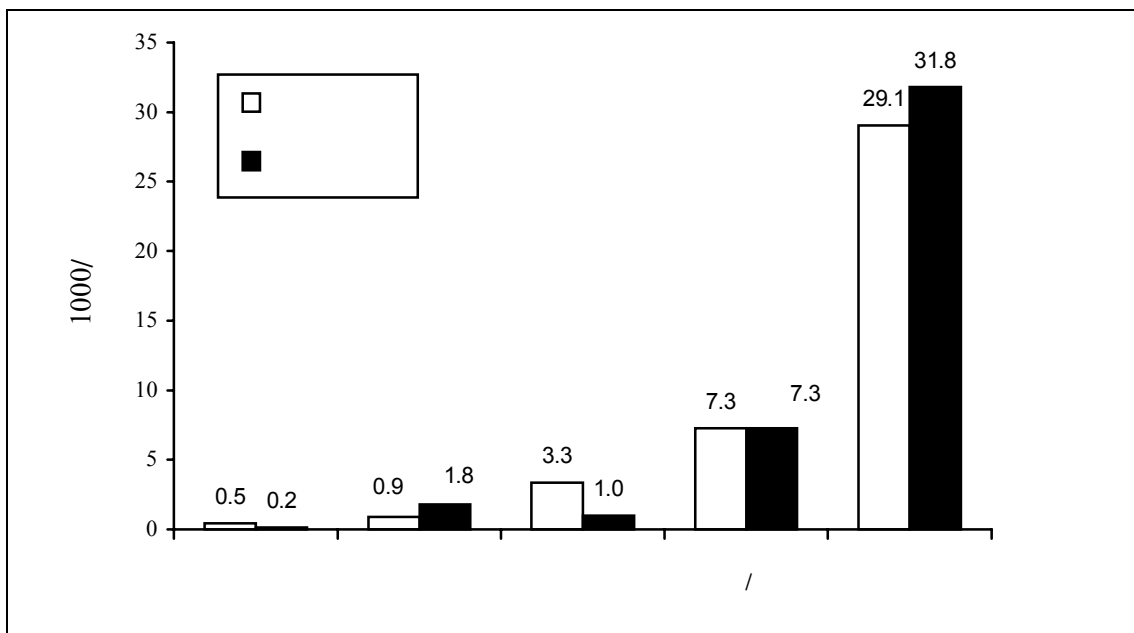
.(%54.0)

7

%0.8

41.4
29.1
3.3
(14 8)
1.0
31.8
:(8)

2000



207 : 3.2.3
2000

(15) 50 157

3.8 4.5
2.7 3.7

2000 : 4.2.3
86

706

84

29

7.7

.(16)

: 5.2.3

1,034 51 1,159 57

.(17)

. 6
125

%.38.1

%27.5

: 6.2.3

3,317

%.42

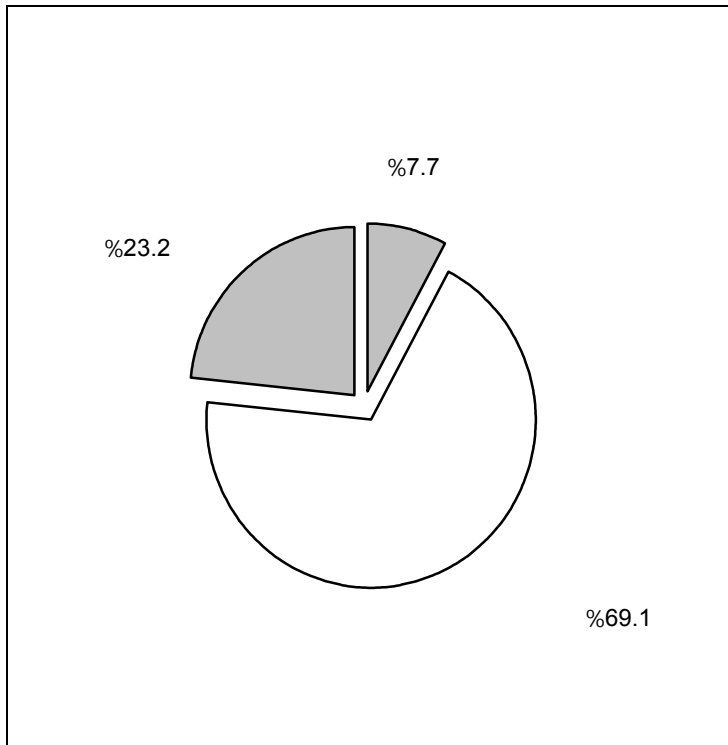
%.58

2000

:(9)

2000

2000



%.69.1

%.74.4

%.61.7

%.7.7

%.7.0

%.8.8

%.23.2

%.18.6

%.29.5

.(19)

4,541 6,526 2000

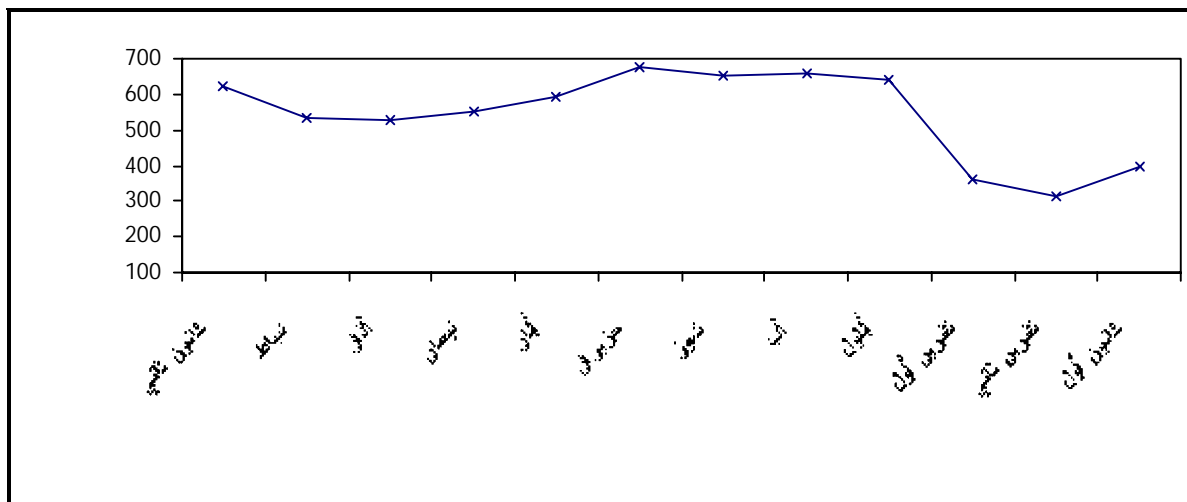
10

1,985

.(21)

2000

:(10)



7,453 2000

11

2,114

5,339

%28.3

%62.8

1999

%2.2

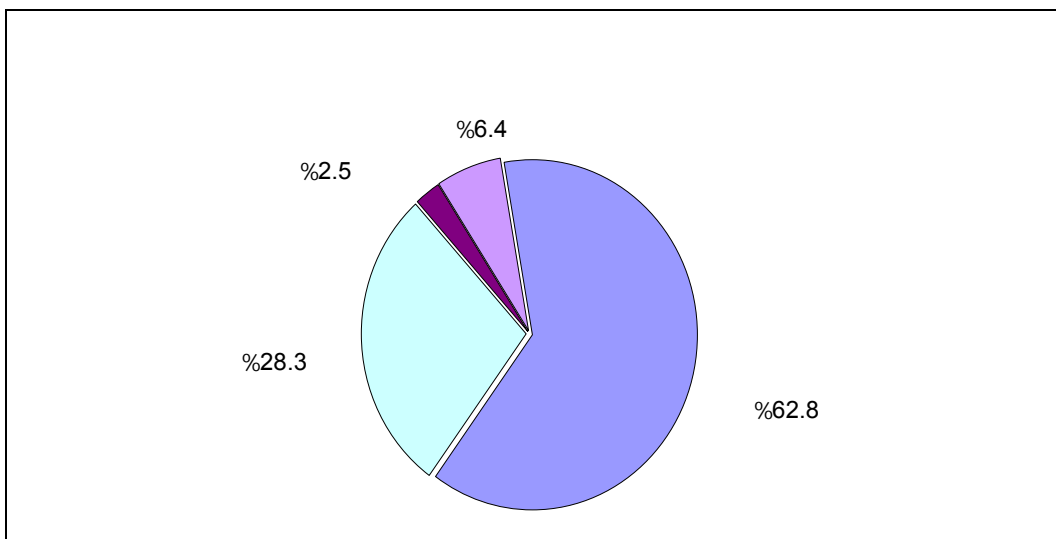
%2.5

%6.4

.(22)

2000

:(11)



: 3.3

2,254 2000

328 73,659 1,926
 %39.5 186,620
 30,128 13,949
 .(25) %46.3

2000

4,455

113

.(24) %41.4

10,772

10,589

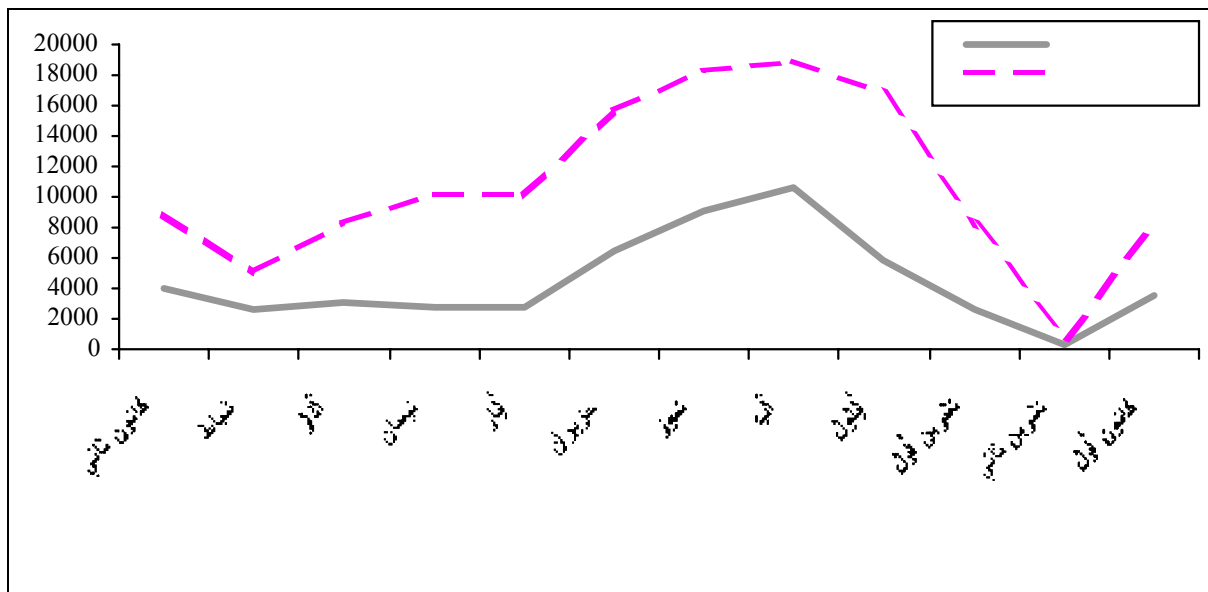
%.56.1

18,864

198

:(12)

2000



(12)

: 4.3

2000

4,203,706

(26) .

350,309

%92.3

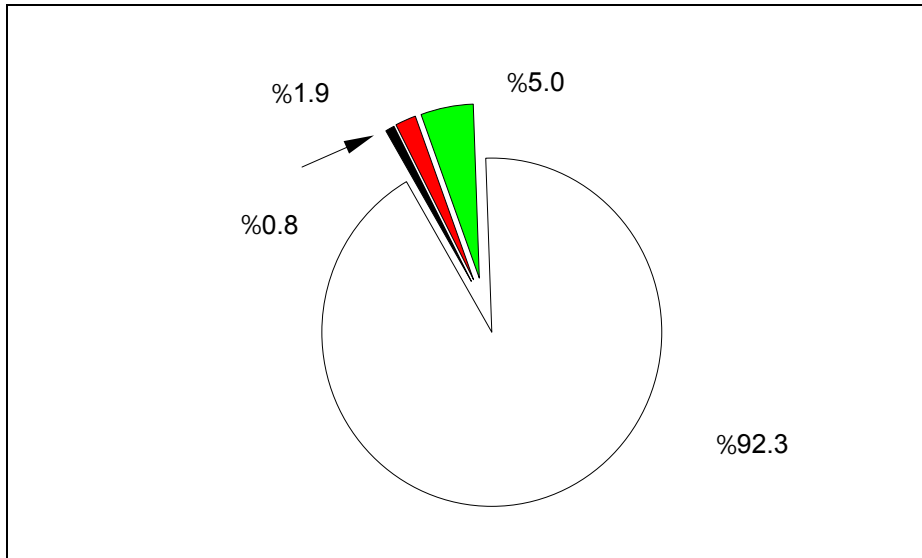
%1.9

%5.0

.(13) %0.8

2000

:(13)



579,136

.(26) 130,708

2000

.(27) 258,991

3,107,891

%96.1

%0.4

%1.4

%2.1

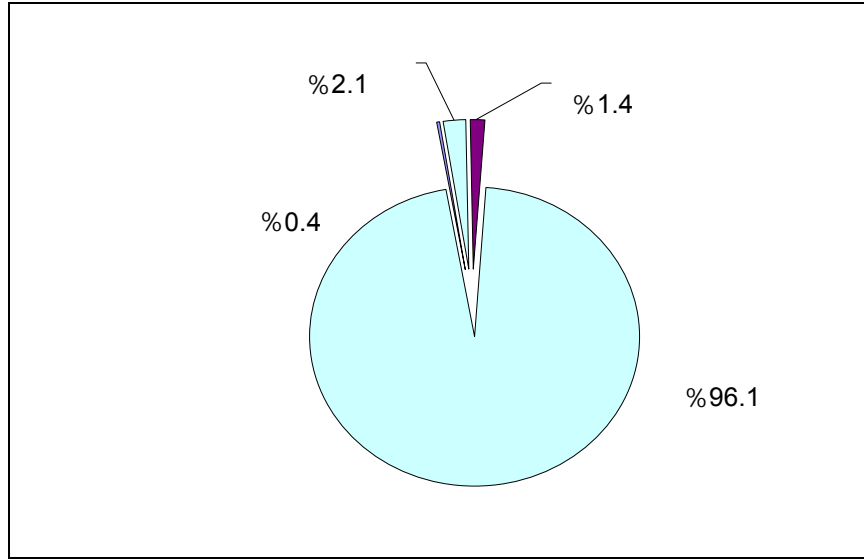
.(14) .

472,205

.(27) 78,706

2000

:(14)



1,009,469

.(28

)

84,122

2000

95.0

%

%0.4

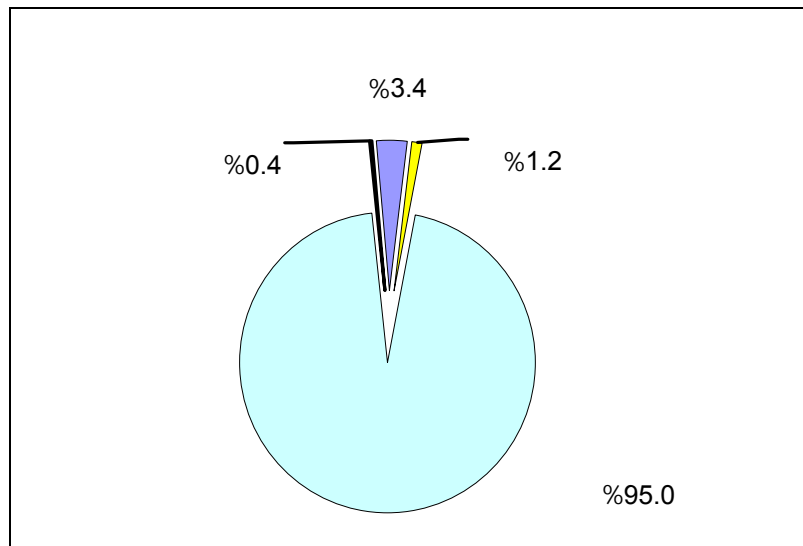
%3.4

%1.2

.(15) .

2000

:(15)



156,421

.(28

)

29,790

702,385

58,532

2000

15,011

117,024

(29)

%2.3

%96.3

.(29) .%0.1

%1.3

: 5.3

2000

272,211

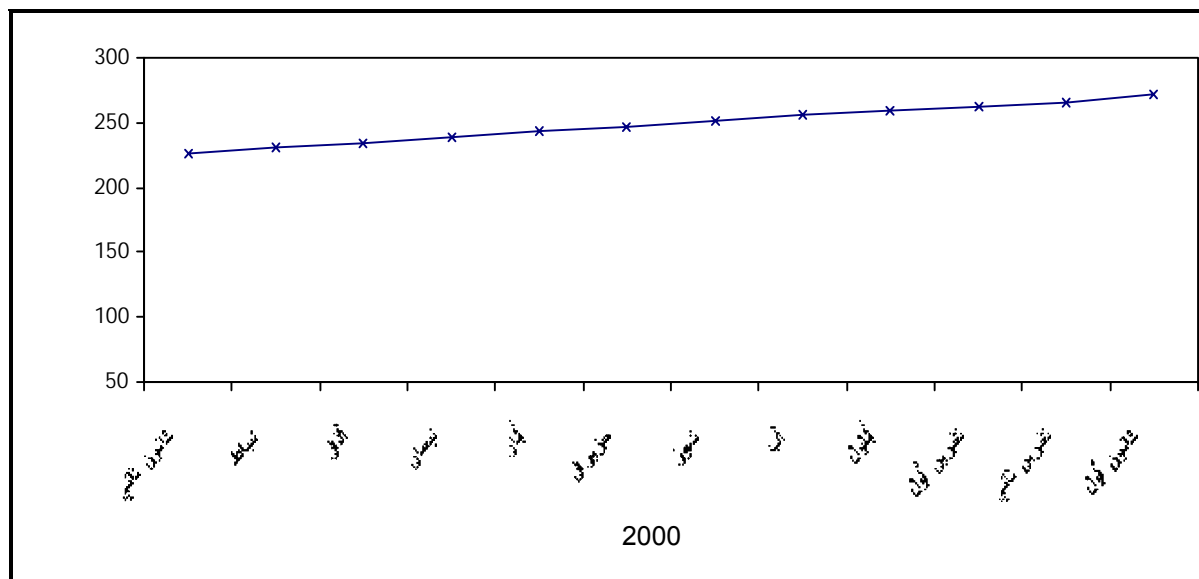
2000

%22.5

.(31 30) 4,168

() 2000

:(16)



2000

14,488

.(32) 1,904

%75.9

2000

30,848,326

%33.2

%66.8

%29.1

%70.9

%14.4

%74.4

%2.8

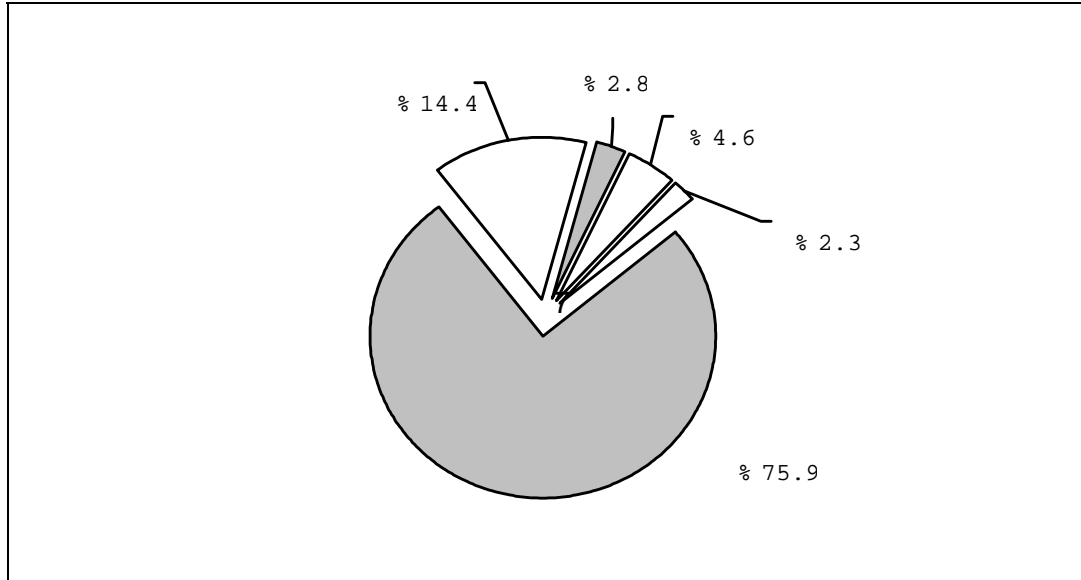
%4.6

%2.3

%25.6

(1967)
 .(17)

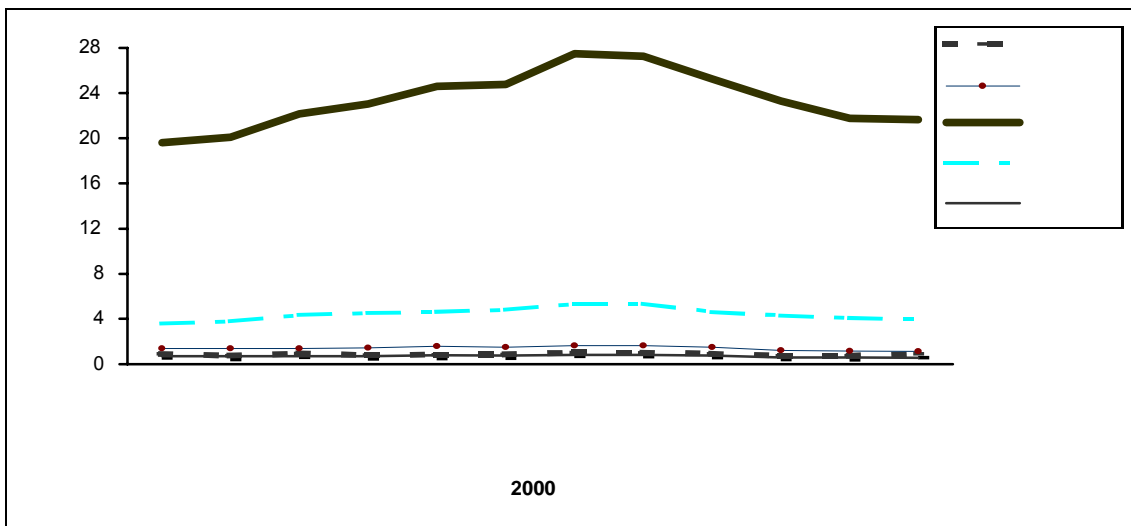
2000 : (17)



36,330,166

.(33) 2000 %9.8

2000 : (18)



2000

83,299,749

%4.1

%17.1

%72.8 :

)

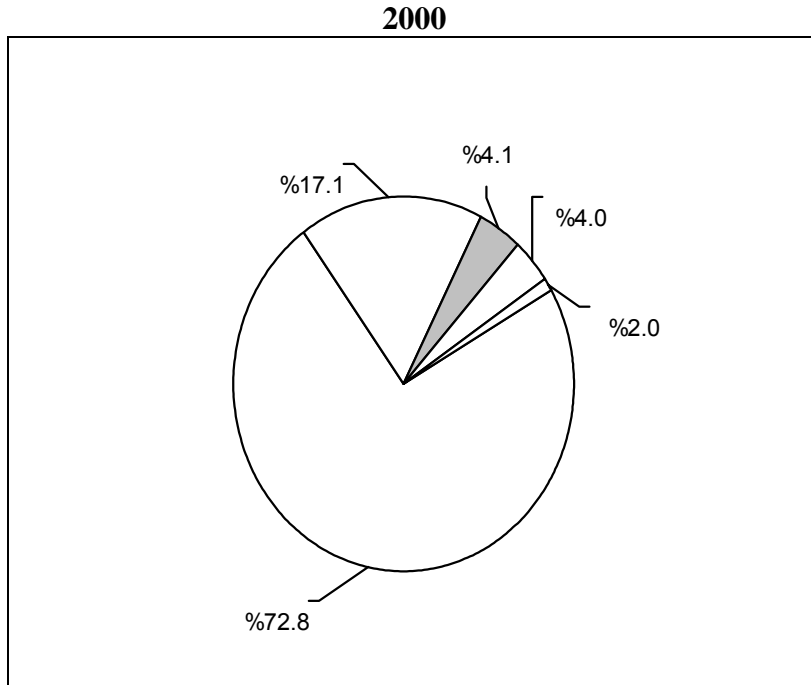
%4.0

%2.0

) .(1967

.(34 19

:(19)



2000 8,549,219

%84.8 %76.3

%23.7 %15.2

.(35) . %47.6 %52.4

6

92 2000

.%16.3 %83.7

7,076 2000

.(36) 69

: **1.4**

: **1.1.4**

(-) 2000 – 1995
23,000 7,500

15

(-)

: **2.1.4**

1994

ARCINFO

1999
(GIS)

(Oracle)

(SPSS)

: **3.1.4**

: **4.1.4**

: **5.1.4**

: **2.4**

2000

2000

: 1.5

: 2.5

2000

•

•

•

)

(

•

•

2000

)

(1967

()

•

•

•

•

	:	.1995	.1
		—	
		.1998	.2
	—	.(8)	
.(2000-1995)		.2001	.3
			—
		.1999	.4
		— .1998	
		.2000	.5
		— .1999	

جدول 1: العاملون في قطاع النقل والتخزين والاتصالات حسب بعض المؤشرات المختارة، 1995-2000

Table 1: Employed Persons in the Transportation, Storage, and Communication Sector by Selected Variables, 1995-2000

Year and Region	الاجر الوسيط اليومي (شيكل ¹) Median Daily Wage (NIS ¹)		معدل الاجرة اليومية (شيكل ¹) Average Daily Wage (NIS ¹)		معدل ايام العمل الشهرية Average Monthly Work Days		معدل ساعات العمل الاسبوعية Average Weekly Work Hours		نسبة العاملين في النقل والتخزين والاتصالات الى مجموع العاملين Percentage of Employed Persons in Transportation, Storage and Communication of Total Employment
	مجموع القطاعات	قطاع النقل والتخزين والاتصالات	مجموع القطاعات	قطاع النقل والتخزين والاتصالات	مجموع القطاعات	قطاع النقل والتخزين والاتصالات	مجموع القطاعات	قطاع النقل والتخزين والاتصالات	
	All Sectors	Transportation, Storage and Communication Sector	All Sectors	Transportation, Storage and Communication Sector	All Sectors	Transportation, Storage and Communication Sector	All Sectors	Transportation, Storage and Communication Sector	
Palestinian Territory									
1995	46.2	40.0	52.0	52.5	21.0	22.0	42.0	47.0	5.1
1996	46.2	46.2	54.5	51.5	22.9	23.3	43.7	47.8	4.8
1997	50.0	57.7	59.3	62.7	22.0	24.0	44.0	48.0	4.8
1998	57.7	57.7	68.5	67.6	23.0	24.0	45.0	42.0	4.7
1999	69.2	61.5	75.5	69.9	22.6	24.5	44.2	49.8	4.7
2000	69.2	66.3	77.3	76.7	22.7	24.4	43.1	50.8	4.9
West Bank									
1995	50.0	42.3	55.7	58.3	21.0	23.0	42.0	48.0	5.3
1996	50.0	57.7	58.2	57.3	21.5	23.5	43.0	49.1	5.1
1997	55.0	61.5	63.1	66.2	21.0	24.0	43.0	48.0	5.1
1998	63.8	60.0	72.3	73.7	22.0	24.0	45.0	51.0	4.8
1999	76.9	69.2	80.3	75.3	22.3	24.5	44.2	50.0	4.7
2000	76.9	76.9	83.3	83.6	22.3	24.5	43.4	51.2	5.1

جدول 1 (تابع): العاملون في قطاع النقل والتخزين والاتصالات حسب بعض المؤشرات المختارة، 1995-2000

Table 1 (Cont.): Employed Persons in the Transportation, Storage, and Communication Sector by Selected Variables, 1995-2000

Year and Region	الاجر الوسيط اليومي (شيكل ¹)		معدل الاجرة اليومية (شيكل ¹)		معدل ايام العمل الشهرية		معدل ساعات العمل الاسبوعية		نسبة العاملين في النقل والتخزين والاتصالات الى مجموع العاملين Percentage of Employed Persons in Transportation, Storage and Communication of Total Employment
	Median Daily Wage (NIS ¹)		Average Daily Wage (NIS ¹)		Average Monthly Work Days		Average Weekly Work Hours		
	مجموع القطاعات	قطاع النقل والتخزين والاتصالات	مجموع القطاعات	قطاع النقل والتخزين والاتصالات	مجموع القطاعات	قطاع النقل والتخزين والاتصالات	مجموع القطاعات	قطاع النقل والتخزين والاتصالات	
	All Sectors	Transportation, Storage and Communication Sector	All Sectors	Transportation, Storage and Communication Sector	All Sectors	Transportation, Storage and Communication Sector	All Sectors	Transportation, Storage and Communication Sector	
Gaza Strip									
1995	34.6	30.0	41.0	32.0	22.0	20.0	43.0	42.0	4.8
1996	36.9	30.0	47.1	37.2	22.9	22.2	44.5	44.0	4.3
1997	40.0	40.0	52.0	49.6	23.0	24.0	44.0	47.0	4.2
1998	46.2	40.0	61.0	49.7	23.0	26.0	44.0	41.0	4.3
1999	50.0	49.9	65.1	55.5	23.2	24.5	44.1	49.1	4.7
2000	50.0	50.0	64.5	56.7	23.5	24.3	42.5	49.5	4.5

¹The average exchange rate of NIS per US\$ during the years 1995, 1996, 1997, 1998, 1999, 2000,

مقابل الدولار خلال الاعوام 1995، 1996، 1997، 1998، 1999، 2000 كما يلي:

is 0.333, 0.315, 0.288, 0.263, 0.241, 0.245 respectively.

0.263، 0.241، 0.245 على التوالي.

Source: Palestinian Central Bureau of Statistics, 2001. Labour Force Survey, (1995-2000).

سطيني، 2001 مسح القوى العاملة، (1995-2000).

جدول 2: أطوال شبكة الطرق في الاراضي الفلسطينية حسب المنطقة ونوع الطريق، 1999

Table 2: Road Network Length in the Palestinian Territory by Region, and Road Type, 1999

Units in Kilometers.

الوحدات بالكيلومترات.

Region	المجموع الكلي Grand Total	طرق غير معبدة Unpaved Roads	Paved Roads					طرق معبدة		المنطقة
			المجموع Total	مستعمرات Settlements	التفافي Bypass	مدخل Access	اقليمي Regional	رئيسي Main		
West Bank	7,318.0	2,121.2	5,196.8	613.7	308.6	3,166.2	624.6	483.7	الضفة الغربية	
Gaza Strip	992.0	290.7	701.3	51.8	-	290.2	216.9	142.4	قطاع غزة	
Palestinian Territory	8,310.0	2,411.9	5,898.1	665.5	308.6	3,456.4	841.5	626.1	الاراضي الفلسطينية	

Source: Palestinian Geographic Center, 2000. Unpublished data.

المصدر: المركز الجغرافي الفلسطيني، 2000. بيانات غير منشورة

جدول 3: الطرق الالتفافية المنشأة في الضفة الغربية خلال الفترة 1994-1999 حسب بعض المؤشرات المختارة¹

Table 3: Bypass Roads Constructed in the Period 1994 - 1999 in the West Bank by Selected Variables¹

Route		المساحة ⁽²⁾ (1000 م ²) Area ⁽²⁾ (1000 m ²)	العرض (م) Width (m)	الطول (كم) Length (km)	رقم الطريق Road Number	المسار	
From	To					إلى	من
Jenin City	Qabatiya	225.0	30.0	7.5	..	قباطية	مدينة جنين
Tulkarm City	Anabta	1,120.0	80.0	14.0	557	عنبتا	مدينة طولكرم
Deir Sharaf	Kafr Qaddum	175.0	50.0	3.5	60	كفر قدوم	دير شرف
Deir Sharaf	Kafr Qaddum	275.0	50.0	5.5	60	كفر قدوم	دير شرف
Deir Sharaf	Ebale	240.0	30.0	8.0	60	عيبال	دير شرف
Deir al Hatab	Beit Furik	720.0	30.0	24.0	60	بيت فوريك	دير الحطب
Jericho Bypass	Dead Sea	5,000.0	90	البحر الميت	طريق اريحا الالتفافي
Bet El	Dolev	دوليف	بيت إيل
Ramallah	Beituniya	261.0	30.0	8.7	..	بيتونيا	رام الله
Mikhmas	Pesagot	187.5	25.0	7.5	..	بسجوت	مخماس
Road No. 60 Modification		1,100.0	100.0	11.0	60		تطوير طريق رقم 60
Talmon	Nahna'ail	250.0	50.0	5.0	..	نحنتيل	ظلمون
Tel Asour	Kokhav Hashaheer	كوخاف هشاخر	تل العاصور
Tosofoem	Kokhav Yaer	كوخاف يانير	تصوفيم
Ramallah Bypass North (Abud)		300.0	50.0	6.0	465		طريق رام الله الالتفافي الشمالي (عابود)
Ras Karkar	Deir Qaddis	200.0	50.0	4.0	556	دير قديس	راس كركر
Betunia	Jerusalem	2.5	..	القدس	بيتونيا

جدول 3 (تابع): الطرق الالتفافية المنشأة في الضفة الغربية خلال الفترة 1994-1999 حسب بعض المؤشرات المختارة¹

Table 3 (Cont.): Bypass Roads Constructed in the Period 1994 - 1999 in the West Bank by Selected Variables¹

Route		المساحة ⁽²⁾ (1000 م ²) Area ⁽²⁾ (1000 m ²)	العرض (م) Width (m)	الطول (كم) Length (km)	رقم الطريق Road Number	المسار	
From	To					إلى	من
Eyoun Harmiah	Ofra	60	عوفرا	عيون الحرامية
'Ein 'Arik Bypass		400.0	50.0	8.0	456		طريق عين عريك الالتفافي
Bet El	Road No. 60	150.5	35.0	4.3	..	طريق رقم 60	بيت إيل
Al Walaja Bypass		3.1	..		طريق الولجة الالتفافي
Bethlehem Bypass		106.0	53.0	2.0	60		طريق بيت لحم الالتفافي
Halhul Bypass		690.0	60.0	11.5	60		طريق حلحول الالتفافي
Haggai	Qiryat Arba'	142.5	25.0	5.7	..	كريات اربع	هاجاي
Bethlehem	Al Khader	51.2	80.0	0.2	60	الخضر	بيت لحم
Passing 'Abud Village		300.0	50.0	6.0	60		المتجاوز قرية عابود
Passing Al Khader Land		90.0	50.0	1.8	..		المتجاوز اراضي الخضر
The Bypass Reaching Road No. 60 "Al Bireh Land"		18.2	10.0	1.8	..		الطريق الالتفافي الواصل الى شارع رقم 60 من اراضي البيرة
Arghoman Section	Shadmot Mehola	416.0	80.0	26.0	90	شدموت ميحولا	مقطع ارغمان
Silwad	'Ein Yabrud	300.0	60.0	5.0	60	عين يبرود	سلواد
Ein ' Auop	Na'laeh	420.0	60.0	7.0	556	نعاليه	عين ايوب
'Asira ash Shamaliya	Nablus	157.5	35.0	4.5	..	نابلس	عصيرة الشمالية

جدول 3 (تابع) : الطرق الالتفافية المنشأة في الضفة الغربية خلال الفترة 1994-1999 حسب بعض المؤشرات المختارة¹

Table 3 (Cont.): Bypass Roads Constructed in the Period 1994 - 1999 in the West Bank by Selected Variables¹

Route		المساحة ⁽²⁾ (1000 م ²) Area ⁽²⁾ (1000 m ²)	العرض (م) Width (m)	الطول (كم) Length (km)	رقم الطريق Road Number	المسار	
From	To					إلى	من
Beit Ummar	Halhul	1,300.0	80.0	16.3	60	حلحول	بيت امر
Al Mazra'a	Al Gharbya	1.8	..	الجانية	المزرعة الغربية
Beituniya	'Ein 'Arik	4.0	..	عين عريك	بيتونيا
Al Khadr	Jerusalem	133.0	35.0	3.8	365	القدس	الخضر
Al Khadr	Nahhalin	168.0	60	نحالين	الخضر
Halhul	Beit Kahil	90.0	50.0	1.8	..	بيت كاحل	حلحول
Beitin	Silwad	1,100.0	100.0	11.0	..	سلواد	بتين
Al Khadr	Betar	296.0	80.0	3.7	60	بيتار	الخضر
Anata	Mishor Adummim	1,564.0	..	6.9	45	مشور الدوميم	عناتا
Salfit		1,989.2	477		سلفيت
Huwwara - Yasuf - Yatma		60		حوارة-ياسوف-يتما
Adh Dhahiriya	Dura	3,237.0	..	18.2	60	دورا	الظاهرية
Rantis	Allubban	465	اللبين	رنتيس
Jeansafut - Mas-ha-Kafr Laqif		150.0	117-18		جنصافوط-مسحة-كفر لاقف
North Jericho - Al' Auja		90		شمال اريحا-العوجا
Jaba	Mikhmas	1,038.5	60	مخماس	جبع

¹Israeli Settlements appear in bold font.

²The figures of the area in this table do not necessarily equal to the product of the length by the width; because the width sometimes represents the distance between buildings boundaries.

Source: Palestinian Central Bureau of Statistics, 2000. Transportation and Communication Statistics in the Palestinian Territory: Annual Report 1999.

¹ أسماء المستعمرات الإسرائيلية تظهر بخط غامق.

²المساحة لا تساوي بالضرورة حاصل ضرب الطول في العرض؛

كون العرض في هذا الجدول يمثل أحيانا المسافة بين خطي البناء.

المصدر: الجهاز المركزي للإحصاء الفلسطيني، 2000. إحصاءات النقل والاتصالات في

الأراضي الفلسطينية: التقرير السنوي 1999.

جدول 4: الطرق الالتفافية التي تم البدء بإنشائها في الضفة الغربية خلال العام 1999 حسب بعض المؤشرات المختارة¹

Table 4: Bypass Roads (Under Construction) during 1999 in the West Bank by Selected Variables¹

Route		المساحة ⁽²⁾ (1000 م ²) Area ⁽²⁾ (1000 m ²)	العرض (م) Width (m)	الطول (كم) Length (km)	رقم الطريق Road Number	المسار	
From	To					إلى	من
Southern Eastern Downhill in Al Masharef Mountain in Jerusalem		52.0	16	المنحدرات الشرقية الجنوبية بجبل المشارف في القدس	
Tene	Ashlelot	920.0	80.0	11.5	317	تينه اشكلوت	
Anata		550.0	45	عناتا	
Duma - Majdal Bani Fadil		5	دوما-مجدل بني فاضل	
Ein' Arik - Deir ibzi'		150.0	456	عين عريك-دير ايزيغ	
Ar Ram & Jaba - Hizma		1076.0	45	الرام-جبع-حزما	
Shu'fat -Lifta		1,530.0	4	شعفاط-لфта	
Abu Dis		690.0	820-3982	ابوديس	
Jaba' - Al Funduqumiya -Silat adh Dhahr - Al' Attara - Deir Sharaf		2,850.0	60	جبع-الفندقومية-سيلة الظهر-العطرة-دير شرف	
Yatma	Yasuf	496.0	60	يتما ياسوف	

¹Israeli Settlements appear in bold font.

²The figures of the area in this table do not necessarily equal the product of the length by the width, because the width sometimes represents the distance between buildings boundaries.

Source: Palestinian Central Bureau of Statistics, 2000. Transportation and Communication Statistics in the Palestinian Territory: Annual Report 1999.

¹أسماء المستعمرات الإسرائيلية تظهر بخط غامق.

²المساحة لا تساوي بالضرورة حاصل ضرب الطول في العرض، كون العرض في هذا الجدول يمثل أحيانا المسافة بين خطي البناء.

المصدر: الجهاز المركزي للإحصاء الفلسطيني، 2000. إحصاءات النقل والاتصالات في الأراضي الفلسطينية: التقرير السنوي 1999.

جدول 5: الطرق الالتفافية المقترحة في الضفة الغربية حسب بعض المؤشرات المختارة¹، حتى نهاية العام 1999

Table 5: Proposed Bypass Roads in the West Bank by Selected Variables¹, till the End of 1999

Route		المساحة ⁽²⁾ (1000 م ²) Area ⁽²⁾ (1000 m ²)	رقم الطريق Road Number	المسار	
From	To			إلى	من
Deir Ibzi'-Al Janiya-Kafr Ni'ma		362.0	..	دير ابزيح-الجانية-كفر نعمه	
Rabud-Sikka-Adh Dhahiriya		720.0	60	رابود-سكة-الظاهرية	
Passing As Samu'-Adh Dhahiriya		90.0	..	متجاوز السموع-الظاهرية	
Al Touq Road		1,070.0	..	طريق الطوق	
Passing Sa'ir		1,180.0	35	متجاوز سعير	
Ar Ram & Dahyat Al Bareed-Hizma-Jaba'		1,076.0	45	الرام -حزما-جبع	
Qiryat Arba'	Metzaed Asfer	1,180.0	..	متساد اسفر	كريات اربع
Passing As Samu'		67.0	60	متجاوز السموع	
Baqash Sharqiya	'Illar	1,300.0	61	علا	باقه الشرقيه
Umm ar Rihan	Ya'bad	478.0	596	يعبد	ام الريحان
Huwwara-Beita-Yasuf - Za' tara		..	60	حوارة-بيتا-ياسوف-زعترة	
Ti'innik	Al 'Araqa	2,030.0	596	العرقه	تعنك
Ya'bad Bypass		735.0	60	التقافي يعبد	
Sinjil - Turmus' ayya - Al Mazra'a ash sharqiya		924.0	60	سنجل-ترمسعيا-المزرعة الشرقية	

جدول 5 (تابع): الطرق الالتفافية المقترحة في الضفة الغربية حسب بعض المؤشرات المختارة¹، حتى نهاية العام 1999

Table 5(cont): Proposed Bypass Roads in the West Bank by Selected Variables¹, till the End of 1999

Route		المساحة ⁽²⁾ (1000 م ²) Area ⁽²⁾ (1000 m ²)	رقم الطريق Road Number	المسار	
From	To			إلى	من
Beit Sahur - Hujayleh-'Beit Lahm		350.0	398	بيت ساحور-الحجيلة	بيت لحم
Ras Karkar	Kafr Ni'ma	..	445	كفرنعمة	راس كركر
Beit Sahur	Za'tara	1,200.0	398	زعترة	بيت ساحور
Majdal Bani Fadil		..	5		مجدل بني فاضل
Jalud'	Al Mughayyir	1,300.0	467	المغير	جالود
Kharbatha - 'Ras Karkar- Kafr Ni,ma		..	445	خربثا-راس كركر - كفر نعمة	
Kifl Haris - Iskaka-'Salfit		1,989.2	477	كفل حارس - اسكاكا- سلفيت	
Tuqu' - At Ta'amira-'Khirbet Ad Deir		..	356	تقوع - التعامرة - خربة الدير	
Karza	Deir Al ' Asal Tahta	1,900.0	38	دير العسل التحتا	كرزة

¹Israeli Settlements appear in bold font.

²The figures of the area in this table do not necessarily equal the product of the length by the width; because the width sometimes represents the distance between buildings boundaries.

Source: Palestinian Central Bureau of Statistics, 2000. Transportation and Communication Statistics in the Palestinian Territory: Annual Report 1999.

¹أسماء المستعمرات الإسرائيلية تظهر بخط غامق.

²المساحة لا تساوي بالضرورة حاصل ضرب الطول في العرض؛

كون العرض في هذا الجدول يمثل أحيانا المسافة بين خطي البناء.

المصدر: الجهاز المركزي للإحصاء الفلسطيني، 2000. إحصاءات النقل والاتصالات في

الأراضي الفلسطينية: التقرير السنوي 1999.

جدول 6: اعداد المركبات المرخصة في باقي الضفة الغربية حسب المحافظة ونوع المركبة، 2000

Table 6: Licensed Road Vehicles in the Remaining West Bank by Governorate and Type of Vehicle, 2000

Governorate	المجموع Total	مركبات اخرى Other Vehicles	شاحنات وسيارات تجارية Trucks and Commercial Cars	جرارات Road Tractors	جرارات زراعية Agricultural Tractors	مقطورات ونصف مقطورات Trailers and Semi-Trailers	باصات عمومية Public Buses	باصات خصوصية Private Buses	دراجات نارية ودراجات نارية صغيرة Motorcycles and Moped	سيارات أجرة "تاكسي" ¹ Taxis ¹	سيارات خاصة Private Cars	المحافظة
Jenin & Tubas	9,100	8	1,925	5	344	26	109	9	2	711	5,961	جنين وطوباس
Tulkarm	7,016	16	977	8	117	29	73	21	3	627	5,145	طولكرم
Nablus & Salfit	16,024	24	2,690	17	198	68	133	42	8	1,347	11,497	نابلس وسلفيت
Qalqiliya	2,822	5	656	1	57	12	8	4	4	197	1,878	قلقيلية
Ramallah & Al-Bireh	14,035	26	2,564	22	108	42	70	67	6	1,190	9,940	رام الله والبيرة
Jericho	2,049	3	326	2	44	8	31	1	4	193	1,437	أريحا
Bethlehem	8,533	11	1,136	2	50	7	84	26	8	448	6,761	بيت لحم
Hebron	15,275	19	3,036	11	221	14	120	67	3	1,377	10,407	الخليل
Remaining West Bank	74,854	112	13,310	68	1139	206	628	237	38	6,090	53,026	باقي الضفة الغربية

¹The number of taxis in this column does not reflect the actual number of working taxis

¹العدد الوارد في هذا العمود يخص سيارات الاجرة المسجلة في المحافظات ولا يعكس العدد الحقيقي الذي يعمل في المحافظة،

in the governorates, because most of taxis were initially registered in Nablus and Ramallah & Al-Bireh governorates.

وذلك بسبب تسجيل معظم سيارات الاجرة في محافظتي نابلس ورام الله والبيرة.

Source: Ministry of Transport, 2000. Unpublished data.

المصدر: وزارة النقل والمواصلات، 2000. بيانات غير منشورة.

جدول 7: اعداد المركبات المرخصة في قطاع غزة حسب المنطقة ونوع المركبة، 2000

Table 7: Licensed Road Vehicles in Gaza Strip by Area and Type of Vehicle, 2000

Area	المجموع Total	مركبات اخرى Other Vehicles	شاحنات وسيارات تجارية Trucks and Commercial Cars	جرارات Road Tractors	جرارات زراعية Agricultural Tractors	مقطورات ونصف مقطورات Trailers and Semi-Trailers	باصات Buses	دراجات نارية ودراجات نارية صغيرة Motorcycles and Moped	سيارات أجرة "تاكسي" Taxis	سيارات خاصة Private Cars	المنطقة
Northern Area ¹	34,853	137	6,009	211	494	300	162	214	568	26,758	المنطقة الشمالية ¹
Southern Area ²	14,161	32	2,491	34	552	53	15	39	605	10,340	المنطقة الجنوبية ²
Gaza Strip	49,014	169	8,500	245	1,046	353	177	253	1,173	37,098	قطاع غزة

¹Northern Area includes both Gaza, and Gaza North governorates.

¹تشمل المنطقة الشمالية محافظتي غزة وشمال غزة.

²Southern Area includes Deir Al-Balah, Khan Yunis, and Rafah governorates.

²تشمل المنطقة الجنوبية محافظات دير البلح وخانيونس ورفح.

Source: Ministry of Transport, 2000. Unpublished data.

المصدر: وزارة النقل والمواصلات، 2000. بيانات غير منشورة.

جدول 8: اعداد المركبات المرخصة في باقي الضفة الغربية حسب المحافظة ونوع الوقود، 2000

Table 8: Licensed Road Vehicles in the Remaining West Bank by Governorate and Type of Fuel, 2000

Governorate	المجموع Total	بلا وقود (مقطورات ونصف مقطورات) Without Fuel (Trailers & Semi-Trailers)	غير مبين Not Stated	ديزل Diesel	بنزين Gasoline	المحافظة
Jenin & Tubas	9,100	26	0	2,628	6,446	جنين وطوباس
Tulkarm	7,016	28	1	1,625	5,362	طولكرم
Nablus & Salfit	16,024	67	0	3,918	12,039	نابلس وسلفيت
Qalqiliya	2,822	12	0	665	2,145	قلقيلية
Ramallah & Al-Bireh	14,035	40	2	3,930	10,063	رام الله والبيرة
Jericho	2,049	8	1	541	1,499	أريحا
Bethlehem	8,533	7	0	1,501	7,025	بيت لحم
Hebron	15,275	14	0	4,561	10,700	الخليل
Remaining West Bank	74,854	202	4	19,369	55,279	باقي الضفة الغربية

Source: Ministry of Transport, 2000. Unpublished data.

المصدر: وزارة النقل والمواصلات، 2000. بيانات غير منشورة.

جدول 9: اعداد المركبات في باقي الضفة الغربية حسب شهر التسجيل للمرة الاولى ونوع المركبة، 2000

Table 9: Road Vehicles in the Remaining West Bank by First Month of Registration and Type of Vehicle, 2000

Month	المجموع Total	مركبات اخرى Other Vehicles	شاحنات وسيارات تجارية Trucks and Commercial Cars	جرارات Road Tractors	جرارات زراعية Agricultural Tractors	مقطورات ونصف مقطورات Trailers and Semi-Trailers	باصات عمومية Public Buses	باصات خصوصية Private Buses	دراجات ناربية ودراجات ناربية صغيرة Motorcycles and Moped	سيارات أجرة "تاكسي" Taxis	سيارات خاصة Private Cars	الشهر
January	382	7	129	0	3	1	3	2	0	49	188	كانون ثاني
February	608	8	233	0	9	7	11	1	0	64	275	شباط
March	679	3	152	1	6	7	6	5	0	175	324	آذار
April	703	0	158	2	6	8	7	2	0	193	327	نيسان
May	576	0	157	0	5	6	5	3	0	136	264	أيار
June	495	0	142	0	5	2	2	1	0	88	255	حزيران
July	963	9	243	3	8	8	10	2	0	148	532	تموز
August	836	1	172	0	11	7	5	9	0	102	529	آب
September	613	1	126	0	5	6	5	7	0	78	385	أيلول
October	154	9	54	0	3	2	1	3	0	12	70	تشرين أول
November	133	1	30	0	2	0	1	0	0	17	82	تشرين ثاني
December	141	4	17	0	3	0	1	3	0	13	100	كانون أول
Total	6,283	43	1,613	6	66	54	57	38	0	1,075	3,331	المجموع
Average	524	4	134	1	6	5	5	3	0	90	278	المعدل

Source: Ministry of Transport, 2000. Unpublished data.

جدول 10: اعداد المركبات في قطاع غزة حسب شهر التسجيل للمرة الاولى ونوع المركبة، 2000

Table 10: Road Vehicles in Gaza Strip by First Month of Registration and Type of Vehicle, 2000

Month	المجموع Total	مركبات اخرى Other Vehicles	شاحنات وسيارات تجارية Trucks and Commercial Cars	جرارات Road Tractors	جرارات زراعية Agricultural Tractors	مقطورات ونصف مقطورات Trailers and Semi-Trailers	باصات Buses	دراجات نارية ودراجات نارية صغيرة Motorcycles and Moped	سيارات أجرة "تاكسي" Taxis	سيارات خاصة Private Cars	الشهر
January	119	0	45	1	0	2	0	0	0	71	كانون ثاني
February	83	0	49	1	0	2	2	1	0	28	شباط
March	209	0	60	0	0	4	4	10	0	131	آذار
April	157	2	25	2	3	1	5	25	0	94	نيسان
May	92	0	33	0	2	3	0	0	0	54	أيار
June	138	0	45	2	5	5	6	0	0	75	حزيران
July	262	6	65	3	4	14	3	6	0	161	تموز
August	250	2	59	2	3	20	0	0	0	164	آب
September	184	0	51	4	0	9	0	0	0	120	أيلول
October	101	1	27	1	0	5	0	0	0	67	تشرين أول
November	34	8	8	0	0	0	1	0	0	17	تشرين ثاني
December	34	17	2	0	0	0	0	0	0	15	كانون أول
Total	1,663	36	469	16	17	65	21	42	0	997	المجموع
Average	139	3	39	1	1	5	2	4	0	83	المعدل

Source: Ministry of Transport, 2000. Unpublished data.

المصدر: وزارة النقل والمواصلات، 2000. بيانات غير منشورة.

جدول 11: اعداد المركبات في باقي الضفة الغربية حسب شهر التسجيل للمرة الاولى ونوع الوقود، 2000

Table 11: Road Vehicles in the Remaining West Bank by First Month of Registration and Type of Fuel, 2000

Month	المجموع	بلا وقود (مقطورات ونصف مقطورات)	ديزل	بنزين	الشهر
	Total	Without Fuel (Trailers & Semi-Trailers)	Diesel	Gasoline	
January	382	1	221	160	كانون ثاني
February	608	6	375	227	شباط
March	679	7	389	283	آذار
April	703	8	418	277	نيسان
May	576	6	339	231	أيار
June	495	2	264	229	حزيران
July	963	8	509	446	تموز
August	836	7	382	447	آب
September	613	6	289	318	أيلول
October	154	2	95	57	تشرين أول
November	133	0	66	67	تشرين ثاني
December	141	0	44	97	كانون أول
Total	6,283	53	3,391	2,839	المجموع
Average	524	4	283	237	المعدل

Source: Ministry of Transport, 2000. Unpublished data.

المصدر: وزارة النقل والمواصلات، 2000. بيانات غير منشورة.

جدول 12: اعداد المركبات المسجلة للمرة الاولى في باقي الضفة الغربية حسب المحافظة ونوع المركبة، 2000

Table 12: New Registered Road Vehicles in the Remaining West Bank by Governorate and Type of Vehicle, 2000

Governorate	المجموع Total	مركبات اخرى Other Vehicles	شاحنات وسيارات تجارية Trucks and Commercial Cars	جرارات Road Tractors	جرارات زراعية Agricultural Tractors	مقطورات ونصف مقطورات Trailers and Semi-Trailers	باصات عمومية Public Buses	باصات خصوصية Private Buses	دراجات نارية ودراجات نارية صغيرة Motorcycles and Moped	سيارات أجرة "تاكسي" Taxis	سيارات خاصة Private Cars	المحافظة
Jenin & Tubas	797	5	215	2	18	21	9	4	0	155	368	جنين وطوباس
Tulkarm	390	3	67	0	8	6	6	1	0	115	184	طولكرم
Nablus & Salfit	1,125	5	255	0	16	5	5	6	0	161	672	نابلس وسلفيت
Qalqiliya	209	2	62	0	1	3	1	0	0	34	106	قلقيلية
Ramallah & Al-Bireh	1,784	20	428	4	7	7	14	5	0	169	1,130	رام الله والبيرة
Jericho	114	0	31	0	4	0	0	1	0	27	51	أريحا
Bethlehem	566	3	139	0	1	1	8	4	0	60	350	بيت لحم
Hebron	1,298	5	416	0	11	11	14	17	0	354	470	الخليل
Remaining West Bank	6,283	43	1,613	6	66	54	57	38	0	1,075	3,331	باقي الضفة الغربية

Source: Ministry of Transport, 2000. Unpublished data.

المصدر: وزارة النقل والمواصلات، 2000. بيانات غير منشورة.

جدول 13: اعداد المركبات المسجلة للمرة الاولى في قطاع غزة حسب المنطقة ونوع المركبة، 2000

Table 13: New Registered Road Vehicles in Gaza Strip by Area and Type of Vehicle, 2000

Area	المجموع Total	مركبات اخرى Other Vehicles	شاحنات وسيارات تجارية Trucks and Commercial Cars	جرارات Road Tractors	جرارات زراعية Agricultural Tractors	مقطورات ونصف مقطورات Trailers and Semi-Trailers	باصات Buses	دراجات نارية ودراجات نارية صغيرة Motorcycles and Moped	سيارات أجرة "تاكسي" Taxis	سيارات خاصة Private Cars	المنطقة
Northern Area ¹	1,416	28	386	15	17	52	20	42	0	856	المنطقة الشمالية ¹
Southern Area ²	247	8	83	1	0	13	1	0	0	141	المنطقة الجنوبية ²
Gaza Strip	1,663	36	469	16	17	65	21	42	0	997	قطاع غزة "

¹Northern Area includes both Gaza, and North Gaza governorates.

¹تشمل المنطقة الشمالية محافظتي غزة وشمال غزة.

²Southern Area includes Deir Al-Balah, Khan Yunis, and Rafah governorates.

²تشمل المنطقة الجنوبية محافظات دير البلح وخانيونس ورفح.

Source: Ministry of Transport, 2000. Unpublished data.

المصدر: وزارة النقل والمواصلات، 2000. بيانات غير منشورة.

جدول 14: كثافة المركبات لكل 1000 نسمة في باقي الضفة الغربية وقطاع غزة حسب نوع المركبة والمنطقة، 2000

Table 14: Rate of Motorization Per 1000 Capita in the Remaining West Bank and Gaza Strip by Type of Vehicle and Region, 2000

Vehicle Type	باقي الضفة الغربية وقطاع غزة Remaining West Bank and Gaza Strip	قطاع غزة Gaza Strip	باقي الضفة الغربية Remaining West Bank	نوع المركبة
Private Cars	30.11	31.78	29.05	سيارات خاصة
Taxis	2.43	1.00	3.34	سيارات أجرة (تاكسي)
Motorcycles and Moped	0.10	0.22	0.02	دراجات نارية ودراجات نارية صغيرة
Buses	0.35	0.15	0.47	باصات
Trailers and Semi-Trailers	0.19	0.30	0.11	مقطورات ونصف مقطورات
Agricultural Tractors	0.73	0.90	0.62	جرارات زراعية
Road Tractors	0.10	0.21	0.04	جرارات
Trucks and Commercial Cars	7.29	7.28	7.29	شاحنات وسيارات تجارية
Other Vehicles	0.09	0.14	0.06	مركبات أخرى
All Types	41.38	41.99	41.00	جميع الأنواع

Source: Direct calculation from the Ministry of Transport raw Data, using the data of the Population, Housing, and Establishment Census, 1997

المصدر: حساب مباشر من البيانات الخام لوزارة النقل والمواصلات والاستناد الى بيانات التعداد العام للسكان والمساكن والمنشآت، 1997

جدول 15: مدارس تعليم قيادة السيارات في باقي الضفة الغربية وقطاع غزة حسب بعض المؤشرات المختارة، 2000

Table 15: Driving Schools in the Remaining West Bank and Gaza Strip by Selected Variables, 2000

Governorate	عدد المركبات Number of Vehicles	عدد المدربين Number of Trainers	عدد المدارس Number of Driving Schools	المحافظة
Jenin & Tubas	65	100	15	جنين وطوباس
Tulkarm	42	48	12	طولكرم
Qalqiliya	22	25	5	قلقيلية
Nablus & Salfit	110	125	34	نابلس وسلفيت
Ramallah & Al-Bireh	102	120	26	رام الله والبيرة
Jericho	35	40	10	أريحا
Bethlehem	60	80	27	بيت لحم
Hebron	138	168	28	الخليل
Remaining West Bank	574	706	157	باقي الضفة الغربية
Gaza North	2	4	1	شمال غزة
Gaza	81	124	31	غزة
Deir El-Balah	7	7	3	دير البلح
Khan Yunis	35	45	11	خانيونس
Rafah	9	11	4	رفح
Gaza Strip	134	191	50	قطاع غزة
Total	708	897	207	المجموع

Source: Ministry of Transport, 2000. Unpublished data.

المصدر: وزارة النقل والمواصلات، 2000. بيانات غير منشورة.

جدول 16: شركات الباصات في باقي الضفة الغربية وقطاع غزة حسب بعض المؤشرات المختارة، 2000

Table 16: Buss Companies in the Remaining West Bank and Gaza Strip by Selected Variables, 2000

Governorate	عدد الباصات Number of Buses	عدد شركات الباصات Number of Buss Companies	المحافظة
Jenin	101	19	جنين
Tubas	11	2	طوباس
Tulkarm	60	3	طولكرم
Nablus	120	14	نابلس
Qalqiliya	7	1	قلقيلية
Salfit	6	1	سلفيت
Ramallah & Al-Bireh	70	15	رام الله والبيرة
Jericho	25	4	اريجا
Bethlehem	88	8	بيت لحم
Hebron	160	17	الخليل
Remaining West Bank	648	84	باقي الضفة الغربية
North Gaza	0	0	شمال غزة
Gaza	58	2	غزة
Deir Al-Balah	0	0	دير البلح
Khan Yunis	0	0	خانيونس
Rafah	0	0	رفح
Gaza Strip	58	2	قطاع غزة
Total	706	86	المجموع

Source: Ministry of Transport, 2000. Unpublished data.

المصدر: وزارة النقل والمواصلات، 2000. بيانات غير منشورة.

جدول 17: مكاتب تأجير السيارات في باقي الضفة الغربية وقطاع غزة حسب بعض المؤشرات المختارة، 2000

Table 17: Rent a Car Offices in the Remaining West Bank and Gaza Strip by Selected Variables, 2000

Governorate	عدد السيارات Number of Cars	عدد مكاتب تأجير السيارات Number of Rent a Car Offices	المحافظة
Jenin	71	6	جنين
Tubas	0	0	طوباس
Tulkarm	33	3	طولكرم
Nablus	106	6	نابلس
Qalqiliya	82	3	قلقيلية
Salfit	22	2	سلفيت
Ramallah & Al-Bireh	394	14	رام الله والبيرة
Jericho	10	1	أريحا
Bethlehem	202	10	بيت لحم
Hebron	114	6	الخليل
Remaining West Bank	1,034	51	باقي الضفة الغربية
North Gaza	0	0	شمال غزة
Gaza	125	6	غزة
Deir Al-Balah	0	0	دير البلح
Khan Yunis	0	0	خانيونس
Rafah	0	0	رفح
Gaza Strip	125	6	قطاع غزة
Total	1,159	57	المجموع

Source: Ministry of Transport, 2000. Unpublished data.

المصدر: وزارة النقل والمواصلات، 2000. بيانات غير منشورة.

جدول 18: مكاتب التاكسيات في باقي الضفة الغربية وقطاع غزة حسب بعض المؤشرات المختارة، 2000

Table 18: Taxi Offices in the Remaining West Bank and Gaza Strip by Selected Variables, 2000

Governorate	عدد سيارات الاجرة العاملة Number of Working Taxis	عدد مكاتب التاكسيات Number of Taxi Offices	المحافظة
Jenin	661	21	جنين
Tubas	0	0	طوباس
Tulkarm	596	16	طولكرم
Nablus	1,466	26	نابلس
Qalqiliya	203	8	قلقيلية
Salfit	5	1	سلفيت
Ramallah & Al-Bireh	1,072	36	رام الله والبيرة
Jericho	191	4	أريحا
Bethlehem	468	6	بيت لحم
Hebron	1,525	27	الخليل
Remaining West Bank	6,187	145	باقي الضفة الغربية
North Gaza	13	2	شمال غزة
Gaza	230	18	غزة
Deir Al-Balah	25	3	دير البلح
Khan Yunis	15	3	خانيونس
Rafah	10	2	رفح
Gaza Strip	293	28	قطاع غزة
Total	6,480	173	المجموع

Source: Ministry of Transport, 2000. Unpublished data.

المصدر: وزارة النقل والمواصلات، 2000. بيانات غير منشورة.

جدول 19: اعداد الكراجات المرخصة في باقي الضفة الغربية وقطاع غزة حسب المحافظة ونوع الكراج، 2000

Table 19: Licensed Garages in the Remaining West Bank and Gaza Strip by Governorate and Type of Garage, 2000

Governorate	المجموع Total	بيع اجزاء وتوابع المركبات ذات المحركات Spare parts Stores	صيانة واصلاح المركبات ذات المحركات Motor vehicles repair workshops	بيع المركبات ذات المحركات Motor vehicles trading shops	المحافظة
Jenin & Tubas	287	55	206	26	جنين وطوباس
Tulkarm	274	45	224	5	طولكرم
Qalqiliya	123	16	100	7	قلقيلية
Nablus & Salfit	458	74	360	24	نابلس وسلفيت
Ramallah & Al-Bireh	343	73	228	42	رام الله والبيرة
Jericho	28	6	22	0	أريحا
Bethlehem	189	33	145	11	بيت لحم
Hebron	222	57	146	19	الخليل
Remaining West Bank	1,924	359	1,431	134	باقي الضفة الغربية
North Gaza	161	58	95	8	شمال غزة
Gaza	960	267	587	106	غزة
Deir Al-Balah	72	16	55	1	دير البلح
Khan Yunis	148	52	89	7	خان يونس
Rafah	52	18	34	0	رفح
Gaza Strip	1,393	411	860	122	قطاع غزة
Total	3,317	770	2,291	256	المجموع

Source: Ministry of Transport, 2000. Unpublished data.

المصدر: وزارة النقل والمواصلات، 2000. بيانات غير منشورة.

جدول 20: مجموع حوادث الطرق وعدد المصابين حسب خطورة الإصابة في باقي الضفة الغربية وقطاع غزة، 2000-1996

**Table 20: Total Number of Road Traffic Accidents and Casualties by Severity of injury
in the Remaining West Bank and Gaza Strip, 1996 -2000**

Item	باقي الضفة الغربية وقطاع غزة Remaining West Bank and Gaza Strip					قطاع غزة Gaza Strip					باقي الضفة الغربية Remaining West Bank					البيان
	2000	1999	1998	1997	1996	2000	1999	1998	1997	1996	2000	1999	1998	1997	1996	
Total of Road Accidents	6526	6925	7640	7532	7186	1985	2210	2033	1891	1624	4541	4715	5607	5641	5562	مجموع حوادث الطرق
Total Number of Injured Persons:	7453	8491	8806	8394	8327	2114	2558	2314	2032	1502	5339	5933	6492	6362	6825	اجمالي المصابين:
Slightly Injured	4680	5076	5513	5142	4975	776	924	842	779	511	3904	4152	4671	4363	4464	إصابات بسيطة
Moderate Injured	2107	2628	2456	2415	2490	1042	1296	1122	899	730	1065	1332	1334	1516	1760	إصابات متوسطة
Seriously Injured	476	601	639	657	671	208	255	264	277	180	268	346	375	380	491	إصابات خطيرة
Fatally Injured	190	186	198	180	191	88	83	86	77	81	102	103	112	103	110	وفاة

Source: General Commisariat of the Palestinian Police, 2000.

المصدر: المديرية العامة للشرطة الفلسطينية، 2000.

جدول 21: حوادث الطرق في باقي الضفة الغربية وقطاع غزة حسب المحافظة والشهر، 2000

Table 21: Road Traffic Accidents in the Remaining West Bank and Gaza Strip by Governorate and Month, 2000

Governorate	المجموع Total	كانون أول December	تشرين ثاني November	تشرين أول October	أيلول September	آب August	تموز July	حزيران June	أيار May	نيسان April	آذار March	شباط February	كانون ثاني January	المحافظة
Jenin & Tubas	668	31	35	28	81	70	86	80	74	51	31	47	54	جنين وطوباس
Tulkarm	313	20	11	13	27	27	31	25	32	42	28	25	32	طولكرم
Nablus'	580	27	19	69	43	55	41	113	29	33	27	34	90	نابلس
Qalqiliya	255	50	2	9	11	23	27	17	10	19	42	26	19	قلقيلية
Salfit	27	0	0	0	0	0	14	7	1	5	0	0	0	سلفيت
Ramallah & Al-Bireh	1089	39	62	47	105	116	100	116	113	107	82	89	113	رام الله والبيرة
Jericho	216	6	8	11	31	17	18	24	16	28	17	18	22	أريحا
Bethlehem	561	45	20	27	52	55	52	45	56	43	58	50	58	بيت لحم
Hebron	832	53	52	39	88	83	85	80	93	77	54	67	61	الخليل
Remaining West Bank	4541	271	209	243	438	446	454	507	424	405	339	356	449	باقي الضفة الغربية
Gaza & North Gaza	1124	66	60	61	118	109	112	99	87	98	117	100	97	غزة وشمال غزة
Deir Al-Balah	263	14	11	21	23	28	31	20	30	21	18	21	25	دير البلح
Khan Yunis	416	35	25	30	41	46	41	23	35	23	39	36	42	خانيونس
Rafah	182	9	9	6	21	28	16	26	16	7	12	21	11	رفح
Gaza Strip	1985	124	105	118	203	211	200	168	168	149	186	178	175	قطاع غزة
Total	6526	395	314	361	641	657	654	675	592	554	525	534	624	المجموع

Source: General Commissariat of the Palestinian Police, 2000.

المصدر: المديرية العامة للشرطة الفلسطينية، 2000.

جدول 22: المصابون في حوادث الطرق في باقي الضفة الغربية وقطاع غزة حسب المحافظة ونوع الإصابة 2000

Table 22 : Casualties in Road Traffic Accidents in the Remaining West Bank and Gaza Strip by Governorate and Type of Injury 2000

Governorate	المجموع Total	اصابات قاتلة Fatally Injured	اصابات خطيرة Serriously Injured	اصابات متوسطة Moderately Injured	اصابات بسيطة Slightly Injured	المحافظة
Jenin & Tubas	863	18	15	183	647	جنين وطوباس'
Tulkarm	516	10	2	74	430	طولكرم
Nablus'	1,029	15	149	79	786	نابلس
Qalqiliya	249	10	5	53	181	قلقيلية
Salfit	35	1	10	14	10	سلفيت
Ramallah & Al-Bireh	1,024	13	46	180	785	رام الله والبيرة
Jericho	221	4	2	88	127	أريحا
Bethlehem	560	6	24	199	331	بيت لحم
Hebron	842	25	15	195	607	الخليل
Remaining West Bank	5,339	102	268	1,065	3,904	باقي الضفة الغربية
Gaza 'North Gaza	1,032	47	29	529	427	غزة وشمال غزة
Deir Al-Balah	367	18	157	192	0	دير البلح
Khan Yunis	511	16	17	260	218	خانيونس
Rafah	204	7	5	61	131	رفح
Gaza Strip	2,114	88	208	1,042	776	قطاع غزة
Total	7,453	190	476	2,107	4,680	المجموع

Source: General Commissariat of the Palestinian Police, 2000.

المصدر: المديرية العامة للشرطة الفلسطينية، 2000.

جدول 23: الرحلات المنتظمة للخطوط الجوية الفلسطينية حسب بعض المؤشرات المختارة، 2000-1997

Table 23: Regular Flights of the Palestinian Airlines by Selected Variables, 1997-2000

Year	عدد المقاعد المتوفرة Number of Available Seats	عدد المسافرين Number of Passengers	عدد الرحلات Number of Flights	السنة
1997 ⁽¹⁾	8,832	6,834	184	1997 ⁽¹⁾
1998	21,456	14,726	447	1998
1999	76,736	41,067	990	1999
2000	129,264	53,457	1,324	2000

¹Starting from July, where the first regular flight of the Palestinian Airlines took off.

¹بدءاً من تموز وهو الشهر الذي انطلقت فيه اول رحلة منتظمة للخطوط الجوية الفلسطينية.

Source: Palestinian Airlines, 2000. Unpublished data;

المصدر: الخطوط الجوية الفلسطينية، 2000. بيانات غير منشورة؛

Source: Palestinian Central Bureau of Statistics, 2000. Transportation and

المصدر: الجهاز المركزي للإحصاء الفلسطيني، 2000. إحصاءات النقل والاتصالات في

Communication Statistics in the Palestinian Territory: Annual Report 1999.

الأراضي الفلسطينية: التقرير السنوي 1999.

جدول 24: الرحلات المنتظمة للخطوط الجوية الفلسطينية حسب بعض المؤشرات المختارة، 2000

Table 24: Regular Flights of the Palestinian Airlines by Selected Variables, 2000

Month	عدد المقاعد المتوفرة Number of Available Seats	عدد المسافرين Number of Passengers	عدد الرحلات Number of Flights	الشهر
January	8,880	3,945	94	كانون ثاني
February	5,136	2,591	68	شباط
March	8,288	3,094	86	آذار
April	10,128	2,707	120	نيسان
May	10,128	2,740	120	أيار
June	15,696	6,398	158	حزيران
July	18,384	9,044	188	تموز
August	18,864	10,589	198	آب
September	16,720	5,784	162	أيلول
October	8,112	2,662	78	تشرين أول
November	800	328	8	تشرين ثاني
December	8,128	3,575	74	كانون أول
Total	129,264	53,457	1,354	المجموع
Average	10,772	4,455	113	المعدل

Source: Palestinian Airlines, 2000. Unpublished data.

المصدر: الخطوط الجوية الفلسطينية، 2000. بيانات غير منشورة.

جدول 25: الرحلات الجوية المغادرة والقادمة من وإلى مطار غزة الدولي حسب بعض المؤشرات المختارة، 2000

Table 25: Departure and Arrival Flights from Gaza International Airport by Selected Variables, 2000

Flight Type	عدد المقاعد المتوفرة Number of Available Seats	عدد المسافرين Number of Passengers	عدد الرحلات Number of Flights	نوع الرحلة
Regular				منتظمة
Departure	93,310	36,946	963	مغادرة
Arrival	93,310	36,713	963	قادمة
Total	186,620	73,659	1,926	المجموع
Irregular				غير منتظمة
Departure	15,064	6,856	164	مغادرة
Arrival	15,064	7,093	164	قادمة
Total	30,128	13,949	328	المجموع

Source: Palestinian Airlines, 2000. Unpublished data.

المصدر: الخطوط الجوية الفلسطينية، 2000. بيانات غير منشورة.

جدول 26: البريد الوارد الى باقي الضفة الغربية حسب الشهر ونوع البريد، 2000

Table 26: Mail to the Remaining West Bank by Month and Type of Mail, 2000

Month	المجموع Total	رزم صغيرة Small Packets		البرقيات Telegrams		طرود Parcels		رسائل مسجلة Registered Letters		مطبوعات Printed Matters		رسائل عادية Regular Letters		بريد سريع Express Mail		الشهر
		خارجية Abroad	داخلية Inland	خارجية Abroad	داخلية Inland	خارجية Abroad	داخلية Inland	خارجية Abroad	داخلية Inland	خارجية Abroad	داخلية Inland	خارجية Abroad	داخلية Inland	خارجية Abroad	داخلية Inland	
		January	456,471	828	256	27	137	476	32	2,571	4,114	11,342	5,444	54,620	375,961	
February	269,915	776	350	20	230	398	35	1,399	3,529	7,994	5,323	49,297	199,965	586	13	شباط
March	404,263	1,163	522	30	343	597	51	1,496	5,315	11,988	7,980	73,946	299,933	880	19	آذار
April	238,729	562	368	20	227	361	27	1,335	5,242	11,963	8,331	109,473	100,224	595	1	نيسان
May	497,262	1,510	612	15	217	290	26	2,260	13,064	14,405	10,363	72,930	380,721	848	1	أيار
June	219,840	1,335	482	24	344	291	26	1,872	6,035	13,557	6,798	69,855	118,541	678	2	حزيران
July	579,136	1,168	339	34	552	246	24	1,608	5,981	16,766	6,643	74,713	470,509	553	0	تموز
August	247,020	1,608	415	18	491	323	20	1,533	3,500	9,843	4,692	63,867	160,061	649	0	آب
September	476,890	436	139	22	250	263	14	1,647	3,570	10,298	5,770	63,416	390,451	614	0	أيلول
October	130,708	1,230	195	27	236	179	9	957	1,617	6,587	2,443	33,536	83,221	467	4	تشرين أول
November	480,090	1,230	214	19	271	348	16	2,047	3,927	12,590	9,160	79,510	370,149	609	0	تشرين ثاني
December	203,382	1,165	187	39	296	209	2	1,629	2,615	7,425	3,672	69,581	116,002	560	0	كانون أول
Total	4,203,706	13,011	4,079	295	3,594	3,981	282	20,354	58,509	134,758	76,619	814,744	3,065,738	7,699	43	المجموع
Average	350,309	1,084	340	25	300	332	24	1,696	4,876	11,230	6,385	67,895	255,478	642	4	المعدل

Source: Ministry of Post and Telecommunications, 2000. Unpublished data.

المصدر: وزارة البريد والاتصالات، 2000. بيانات غير منشورة.

جدول 27: البريد الصادر من باقي الضفة الغربية حسب الشهر ونوع البريد، 2000

Table 27: Dispatched Mail from the Remaining West Bank by Month and Type of Mail, 2000

Month	المجموع Total	رزم صغيرة Small Packets		البرقيات Telegrams		طرود Parcels		رسائل مسجلة Registered Letters		مطبوعات Printed Matters		رسائل عادية Regular Letters		الشهر
		خارجية Abroad	داخلية Inland	خارجية Abroad	داخلية Inland	خارجية Abroad	داخلية Inland	خارجية Abroad	داخلية Inland	خارجية Abroad	داخلية Inland	خارجية Abroad	داخلية Inland	
		January	388,406	642	231	3	235	26	17	767	4,113	2,003	3,073	
February	207,230	462	104	13	261	16	7	608	2,972	963	1,560	24,053	176,211	شباط
March	310,827	690	156	19	392	24	13	911	4,455	1,441	2,334	36,077	264,315	آذار
April	169,466	671	250	21	221	45	5	691	4,232	1,285	4,678	52,172	105,195	نيسان
May	373,358	431	183	13	253	30	1	807	11,924	980	2,836	19,513	336,387	أيار
June	107,820	500	183	4	428	26	9	1,020	5,261	522	2,050	25,074	72,743	حزيران
July	472,205	406	165	17	473	33	0	1,200	3,865	1,942	2,717	34,936	426,451	تموز
August	155,996	721	361	11	530	55	0	7,829	2,849	1,833	2,230	27,533	112,044	آب
September	377,190	655	204	6	309	19	1	939	2,973	1,002	2,299	27,901	340,882	أيلول
October	78,706	485	115	3	166	16	0	525	1,077	633	1121	13,405	61,160	تشرين أول
November	344,959	515	144	3	186	17	1	962	1,920	1,304	3954	21,336	314,617	تشرين ثاني
December	121,728	171	78	1	238	247	8	1,285	2,059	810	1,139	33,907	81,785	كانون أول
Total	3,107,891	6,349	2,174	114	3,692	554	62	17,544	47,700	14,718	29,991	350,179	2,634,814	المجموع
Average	258,991	529	181	10	308	46	5	1,462	3,975	1,227	2,499	29,182	219,568	المعدل

Source: Ministry of Post and Telecommunications, 2000. Unpublished data.

المصدر: وزارة البريد والاتصالات، 2000. بيانات غير منشورة.

جدول 28: البريد الوارد الى قطاع غزة حسب الشهر ونوع البريد، 2000

Table 28: Mail to Gaza Strip by Month and Type of Mail, 2000

Month	المجموع	رزم صغيرة		برقيات		طرود		مطبوعات		رسائل مسجلة		رسائل عادية		بريد سريع		الشهر
		Small Packets		Telegrams		Parcels		Printed Matters		Registered Letters		Regular Letters		Express Mail		
		خارجية	داخلية	خارجية	داخلية	خارجية	داخلية	خارجية	داخلية	خارجية	داخلية	خارجية	داخلية	خارجية	داخلية	
		Abroad	Inland	Abroad	Inland	Abroad	Inland	Abroad	Inland	Abroad	Inland	Abroad	Inland	Abroad	Inland	
January	115,908	38	1	12	20	202	23	849	871	279	1155	7,184	105,264	10	0	كانون ثاني
February	50,675	40	0	31	49	182	14	1303	938	493	726	7,087	39,782	30	0	شباط
March	95,925	45	0	18	19	204	38	1795	911	463	355	6,948	85,100	29	0	آذار
April	47,385	50	0	14	28	25	19	1859	1004	344	359	5,935	37,601	147	0	نيسان
May	127,999	73	21	19	76	37	13	2422	963	640	1709	8,342	113,660	24	0	أيار
June	29,790	69	19	11	18	43	20	3157	846	362	371	5,318	19,416	140	0	حزيران
July	156,421	72	0	7	4	220	18	1957	817	505	532	8,397	143,871	21	0	تموز
August	52,132	48	0	12	59	297	25	2726	971	559	365	7,550	39,496	24	0	آب
September	118,853	43	1	3	57	151	21	2428	1044	286	404	8,490	105,903	22	0	أيلول
October	33,590	45	1	23	13	135	9	1732	857	319	839	9,862	19,735	18	2	تشرين أول
November	136,559	53	3	14	18	182	33	2033	581	301	318	21,098	111,901	14	10	تشرين ثاني
December	44,232	21	32	19	23	80	18	1410	640	281	314	9,822	31,553	14	5	كانون أول
Total	1,009,469	597	78	183	384	1,758	251	23,671	10,443	4,832	7,447	106,033	853,282	493	17	المجموع
Average	84,122	50	7	15	32	147	21	1,973	870	403	621	8,836	71,107	41	1	المعدل

Source: Ministry of Post and Telecommunications, 2000. Unpublished data.

المصدر: وزارة البريد والاتصالات، 2000. بيانات غير منشورة.

جدول 29: البريد الصادر من قطاع غزة حسب الشهر ونوع البريد، 2000¹

Table 29: Dispatched Mail from Gaza Strip by Month and Type of Mail, 2000¹

Month	المجموع Total	رزم صغيرة Small Packets		برقيات Telegrams		رسائل مسجلة Registered Letters		مطبوعات Printed Matters		رسائل عادية Regular Letters		الشهر
		خارجية Abroad	داخلية Inland	خارجية Abroad	داخلية Inland	خارجية Abroad	داخلية Inland	خارجية Abroad	داخلية Inland	خارجية Abroad	داخلية Inland	
		January	89,532	3	0	0	23	653	1,223	343	425	
February	25,821	0	0	0	32	351	774	677	749	4,619	18,619	شباط
March	77,161	0	0	0	12	218	230	706	1,111	2,495	72,389	آذار
April	28,966	3	4	0	19	238	329	462	1,207	2,575	24,129	نيسان
May	93,571	13	1	0	45	230	905	775	705	2,532	88,365	أيار
June	17,320	3	0	0	11	217	285	1,122	791	1,717	13,174	حزيران
July	117,024	2	0	3	8	203	235	707	731	2,066	113,069	تموز
August	28,257	0	0	0	23	215	390	611	723	1,830	24,465	آب
September	92,817	4	0	0	43	242	317	893	859	1,999	88,460	أيلول
October	15,011	0	0	0	16	177	1,031	693	706	1,843	10,545	تشرين أول
November	94,846	0	0	0	7	149	159	436	233	825	93,037	تشرين ثاني
December	22,059	0	0	0	7	170	225	445	369	2,444	18,399	كانون أول
Total	702,385	28	5	3	246	3,063	6,103	7,870	8,609	31,124	645,334	المجموع
Average	58,532	2	0	0	21	255	509	656	717	2,594	53,778	المعدل

¹There is no dispatched express mail parcel services in Gaza Strip.

Source: Ministry of Post and Telecommunications, 2000. Unpublished data.

¹لا تتوفر خدمة كل من البريد السريع والطرود الصادرة.

المصدر: وزارة البريد والاتصالات، 2000. بيانات غير منشورة.

جدول 30: أعداد خطوط الهواتف الرئيسية في باقي الضفة الغربية وقطاع غزة حسب السنة والمنطقة، 2000-1996

Table 30: Number of Main Telephone Lines in the Remaining West Bank and Gaza Strip by Year and Region, 1996-2000

Year	باقي الضفة الغربية وقطاع غزة Remaining West Bank and Gaza Strip	قطاع غزة Gaza Strip	باقي الضفة الغربية Remaining West Bank	السنة
1996	83,621	24,238	59,383	1996
1997	110,893	33,415	77,478	1997
1998	167,271	52,852	114,419	1998
1999	222,198	68,385	153,813	1999
2000	272,211	84,187	188,024	2000

Source: Palestine Telecommunications Company, 2000. Unpublished data;

المصدر: شركة الاتصالات الفلسطينية، 2000. بيانات غير منشورة.

Source: Palestinian Central Bureau of Statistics, 2000. Transportation and

المصدر: الجهاز المركزي للإحصاء الفلسطيني، 2000. إحصاءات النقل والاتصالات في

Communication Statistics in the Palestinian Territory: Annual Report 1999.

الأراضي الفلسطينية: التقرير السنوي 1999.

جدول 31: أعداد خطوط الهواتف الرئيسية في باقي الضفة الغربية وقطاع غزة حسب الشهر والمنطقة ونوع الاشتراك، 2000

Table 31: Number of Main Telephone Lines in the Remaining West Bank and Gaza Strip by Month and Region and Type of Subscription, 2000

Month	المجموع الكلي			حكومي			تجاري			منزلي			الشهر
	المجموع Total	قطاع غزة Gaza Strip	باقي الضفة الغربية Remaining West Bank	المجموع Total	قطاع غزة Gaza Strip	باقي الضفة الغربية Remaining West Bank	المجموع Total	قطاع غزة Gaza Strip	باقي الضفة الغربية Remaining West Bank	المجموع Total	قطاع غزة Gaza Strip	باقي الضفة الغربية Remaining West Bank	
January	225,882	69,505	156,377	12,511	3,537	8,974	27,455	6,437	21,018	185,916	59,531	126,385	كانون ثاني
February	230,165	70,442	159,723	12,727	3,533	9,194	27,988	6,566	21,422	189,450	60,343	129,107	شباط
March	234,711	71,847	162,864	12,872	3,587	9,285	28,440	6,661	21,779	193,399	61,599	131,800	آذار
April	238,974	73,116	165,858	13,081	3,614	9,467	28,821	6,752	22,069	197,072	62,750	134,322	نيسان
May	243,418	74,544	168,874	13,527	3,674	9,853	29,321	6,863	22,458	200,570	64,007	136,563	أيار
June	246,884	75,766	171,118	13,926	3,818	10,108	29,665	6,956	22,709	203,293	64,992	138,301	حزيران
July	250,899	77,035	173,864	14,136	3,879	10,257	30,388	7,138	23,250	206,375	66,018	140,357	تموز
August	255,346	78,313	177,033	14,435	4,002	10,433	30,698	7,183	23,515	210,213	67,128	143,085	آب
September	259,308	79,564	179,744	14,595	4,071	10,524	31,163	7,326	23,837	213,550	68,167	145,383	أيلول
October	261,597	80,383	181,214	14,788	4,151	10,637	31,284	7,376	23,908	215,525	68,856	146,669	تشرين أول
November	266,174	81,959	184,215	14,924	4,194	10,730	31,548	7,476	24,072	219,702	70,289	149,413	تشرين ثاني
December	272,211	84,187	188,024	15,026	4,183	10,843	31,889	7,570	24,319	225,296	72,434	152,862	كانون أول

Source: Palestine Telecommunications Company, 2000. Unpublished data.

المصدر: شركة الاتصالات الفلسطينية، 2000. بيانات غير منشورة.

جدول 32: الطلب على خطوط الهواتف الرئيسية في باقي الضفة الغربية وقطاع غزة حسب الشهر والمنطقة، 2000

Table 32: Waiting List for Main Telephone Lines in the Remaining West Bank and Gaza Strip by Month and Region, 2000

Month	باقي الضفة الغربية وقطاع غزة Remaining West Bank and Gaza Strip	قطاع غزة Gaza Strip	باقي الضفة الغربية Remaining West Bank	الشهر
January	37,339	26,067	11,272	كانون ثاني
February	33,638	22,997	10,641	شباط
March	32,745	22,354	10,391	آذار
April	30,871	21,919	8,952	نيسان
May	30,832	21,901	8,931	أيار
June	25,697	17,497	8,200	حزيران
July	23,332	15,191	8,141	تموز
August	21,155	13,488	7,667	آب
September	18,963	11,945	7,018	أيلول
October	16,809	10,467	6,342	تشرين أول
November	14,570	9,431	5,139	تشرين ثاني
December	14,488	8,852	5,636	كانون أول

Source: Palestine Telecommunications Company, 2000. Unpublished data.

المصدر: شركة الاتصالات الفلسطينية، 2000. بيانات غير منشورة.

جدول 33: اعداد المكالمات الهاتفية في باقي الضفة الغربية وقطاع غزة حسب الشهر والمنطقة ونوع المكالمة، 2000

Table 33: Number of Telephone Calls in the Remaining West Bank and Gaza Strip by Month, Region and Type of Calls, 2000

Month	الاجمالي Grand Total	الى القدس To Jerusalem	الى اسرائيل To Israel	International Calls			National Calls			Local Calls			الشهر
				المجموع Total	قطاع غزة Gaza Strip	باقي الضفة الغربية Remaining West Bank	المجموع Total	قطاع غزة Gaza Strip	باقي الضفة الغربية Remaining West Bank	المجموع Total	قطاع غزة Gaza Strip	باقي الضفة الغربية Remaining West Bank	
January	26,180,507	1,374,956	687,478	911,162	223,343	687,819	3,598,245	1,123,799	2,474,446	19,608,666	6,342,657	13,266,009	كانون ثاني
February	26,668,694	1,381,954	690,977	744,175	190,308	553,866	3,749,455	1,129,111	2,620,344	20,102,133	6,586,856	13,515,277	شباط
March	29,528,556	1,384,866	692,433	950,058	239,931	710,127	4,340,498	1,215,451	3,125,047	22,160,701	7,240,858	14,919,843	آذار
April	30,509,495	1,438,710	719,355	795,674	188,120	607,554	4,516,579	1,263,560	3,253,019	23,039,177	7,642,172	15,397,005	نيسان
May	32,428,948	1,576,246	788,123	838,973	208,358	630,615	4,622,010	1,269,465	3,352,545	24,603,596	7,999,820	16,603,776	أيار
June	32,676,181	1,493,828	746,914	858,666	214,584	644,082	4,797,671	1,394,666	3,403,005	24,779,102	8,235,900	16,543,202	حزيران
July	36,330,166	1,638,966	819,483	1,029,398	250,165	779,233	5,338,938	1,420,074	3,918,864	27,503,381	9,397,411	18,105,970	تموز
August	36,099,721	1,634,932	817,466	1,008,903	245,604	763,299	5,368,533	1,426,342	3,942,191	27,269,887	9,179,709	18,090,178	آب
September	33,013,112	1,487,134	743,567	922,801	226,140	696,661	4,610,072	1,303,212	3,306,860	25,249,538	8,282,457	16,967,081	أيلول
October	30,210,211	1,214,168	607,084	763,160	211,822	551,338	4,312,364	1,369,199	2,943,165	23,313,435	7,640,322	15,673,113	تشرين أول
November	28,319,194	1,154,444	577,222	738,202	210,377	527,825	4,092,365	1,328,222	2,764,143	21,756,961	7,414,175	14,342,786	تشرين ثاني
December	28,215,122	1,110,030	555,015	929,054	272,597	656,457	3,970,294	1,269,167	2,701,127	21,650,729	7,385,531	14,265,198	كانون أول
Total	370,179,907	16,890,234	8,445,117	10,490,226	2,681,349	7,808,877	53,317,024	15,512,268	37,804,756	281,037,306	93,347,868	187,689,438	المجموع
Average	30,848,326	1,407,519	703,760	874,185	223,446	650,740	4,443,085	1,292,689	3,150,396	23,419,776	7,778,989	15,640,787	المعدل

Source: Palestine Telecommunications Company, 2000. Unpublished data.

المصدر: شركة الاتصالات الفلسطينية، 2000 بيانات غير منشورة.

جدول 34: مدة المكالمات بالدقائق في باقي الضفة الغربية وقطاع غزة حسب الشهر والمنطقة ونوع المكالمة، 2000

Table 34: Length of Calls in Minutes in the Remaining West Bank and Gaza Strip by Month, Region and Type of Calls, 2000

Month	الاجمالي Grand Total	الى القدس To Jerusalem	الى اسرائيل To Israel	International Calls			National Calls			Local Calls			الشهر
				المجموع Total	قطاع غزة Gaza Strip	باقي الضفة الغربية Remaining West Bank	المجموع Total	قطاع غزة Gaza Strip	باقي الضفة الغربية Remaining West Bank	المجموع Total	قطاع غزة Gaza Strip	باقي الضفة الغربية Remaining West Bank	
January	69,431,928	3,245,824	1,622,912	3,500,641	790,634	2,710,007	11,576,226	4,023,741	7,552,485	49,486,325	18,457,131	31,029,194	كانون ثاني
February	70,570,696	3,262,820	1,631,410	2,855,926	673,692	2,182,234	12,040,557	4,042,763	7,997,794	50,779,983	19,167,751	31,612,232	شباط
March	78,453,232	3,272,874	1,636,437	3,650,490	849,714	2,800,776	13,890,145	4,351,901	9,538,244	56,003,286	21,096,507	34,906,779	آذار
April	81,836,532	3,305,148	1,652,574	3,080,314	708,580	2,371,734	14,478,473	4,538,505	9,939,968	59,320,023	22,656,644	36,663,379	نيسان
May	87,543,423	3,695,344	1,847,672	3,329,128	774,187	2,554,941	15,445,905	4,721,168	10,724,737	63,225,374	23,839,575	39,385,799	أيار
June	86,887,264	3,515,940	1,757,970	3,415,855	821,683	2,594,172	15,442,678	5,135,223	10,307,455	62,754,821	24,207,590	38,547,231	حزيران
July	92,990,841	3,727,254	1,863,627	3,899,894	904,898	2,994,996	15,834,039	4,692,088	11,141,951	67,666,027	26,447,488	41,218,539	تموز
August	92,769,965	3,656,608	1,828,304	3,788,968	882,268	2,906,700	15,701,387	4,619,215	11,082,172	67,794,698	26,048,912	41,745,786	آب
September	89,279,456	3,407,702	1,703,851	3,658,515	838,589	2,819,927	14,036,148	4,360,630	9,675,518	66,473,239	24,775,756	41,697,483	أيلول
October	85,476,043	3,090,557	1,545,278	2,998,011	751,204	2,246,806	14,389,502	4,482,347	9,907,155	63,452,695	23,066,400	40,386,295	تشرين أول
November	82,979,723	2,931,894	1,465,947	2,983,282	813,467	2,169,815	14,116,638	4,682,292	9,434,346	61,481,962	23,346,170	38,135,792	تشرين ثاني
December	81,377,889	2,784,013	1,392,007	3,799,699	1,045,282	2,754,417	13,694,846	4,455,664	9,239,182	59,707,325	22,521,656	37,185,669	كانون أول
Total	999,596,992	39,895,978	19,947,989	40,960,723	9,854,198	31,106,525	170,646,544	54,105,537	116,541,007	728,145,758	275,631,579	452,514,179	المجموع
Average	83,299,749	3,324,665	1,662,332	3,413,394	821,183	2,592,210	14,220,545	4,508,795	9,711,751	60,678,813	22,969,298	37,709,515	المعدل

Source: Palestine Telecommunications Company, 2000. Unpublished data.

المصدر: شركة الاتصالات الفلسطينية، 2000. بيانات غير منشورة.

جدول 35: اعداد المكالمات الصادرة الى هواتف خلوية من باقي الضفة الغربية وقطاع غزة حسب الشهر والمنطقة، 2000

Table 35: Number of Dispatched Telephone Calls To Cellular phone in the Remaining West Bank and Gaza Strip by Month and Region, 2000

Month	المجموع			الى هاتف خلوي اسرائيلي			الى هاتف خلوي فلسطيني			الشهر
	المجموع	قطاع غزة	باقي الضفة الغربية	المجموع	قطاع غزة	باقي الضفة الغربية	المجموع	قطاع غزة	باقي الضفة الغربية	
	Total	Gaza Strip	Remaining West Bank	Total	Gaza Strip	Remaining West Bank	Total	Gaza Strip	Remaining West Bank	
January	6,849,188	1,428,353	5,420,836	5,810,708	949,142	4,861,565	1,038,481	479,211	559,270	كانون ثاني
February	7,072,360	1,552,303	5,520,057	5,803,847	963,800	4,840,047	1,268,513	588,502	680,011	شباط
March	7,742,868	1,708,362	6,034,506	6,302,875	1,055,348	5,247,527	1,439,993	653,014	786,979	آذار
April	8,273,505	1,827,864	6,445,641	6,644,158	1,098,940	5,545,218	1,629,347	728,924	900,423	نيسان
May	9,161,176	1,988,281	7,172,895	7,228,445	1,135,800	6,092,645	1,932,731	852,481	1,080,250	أيار
June	9,105,683	1,906,592	7,199,091	7,079,894	968,802	6,111,092	2,025,789	937,790	1,087,999	حزيران
July	9,520,852	2,693,186	6,827,666	7,139,414	1,563,342	5,576,072	2,381,438	1,129,844	1,251,594	تموز
August	9,641,717	2,569,062	7,072,655	7,146,375	1,383,069	5,763,306	2,495,342	1,185,993	1,309,349	آب
September	9,736,241	1,961,829	7,774,412	7,262,754	748,791	6,513,963	2,473,487	1,213,038	1,260,449	أيلول
October	8,487,038	1,989,657	6,497,381	6,083,975	769,973	5,314,002	2,403,063	1,219,684	1,183,379	تشرين اول
November	8,609,129	1,941,465	6,667,664	6,059,308	664,036	5,395,272	2,549,821	1,277,429	1,272,392	تشرين ثاني
December	8,390,869	1,920,100	6,470,769	5,675,147	588,484	5,086,663	2,715,722	1,331,616	1,384,106	كانون أول
Total	102,590,626	23,487,054	79,103,572	78,236,900	11,889,528	66,347,372	24,353,727	11,597,526	12,756,201	المجموع
Average	8,549,219	1,957,254	6,591,964	6,519,742	990,794	5,528,948	2,029,477	966,461	1,063,017	المعدل

Source: Palestine Telecommunications Company, 2000. Unpublished data.

المصدر: شركة الاتصالات الفلسطينية، 2000. بيانات غير منشورة.

جدول 36: خدمة الانترنت المقدمة في باقي الضفة الغربية وقطاع غزة حسب بعض المؤشرات المختارة، 2000

**Table 36: Internet Service in the Remaining West Bank and Gaza Strip
by Selected Variables, 2000**

Variable	العدد Number	المؤشر
Companies providing the service	6	شركات تقديم الخدمة
Employees in the companies by sex:		العاملون في شركات تقديم الخدمة حسب الجنس:
Male	77	ذكور
Female	15	اناث
Total	92	المجموع
Subscribers by Type of Service:		المشتركون حسب نوع الخدمة:
Internet	7,007	انترنت
E-mail only	69	البريد الالكتروني فقط
Total	7,076	المجموع

Source: Internet Providing Companies, 2000.

المصدر: شركات تقديم خدمة الانترنت، 2000.



Palestinian Central Bureau of Statistic

Transportation and Communication Statistics in the Palestinian Territory: Annual Report 2000

November, 2001

"Cover price 3 US\$ "

PAGE NUMBERS OF ENGLISH TEXT ARE PRINTED IN SQUARE BRACKETS.
TABLES ARE PRINTED IN THE ARABIC ORDER (FROM RIGHT TO LEFT)

© November, 2001.
All rights reserved.

Suggested Citation:

Palestinian Central Bureau of Statistics, 2001. *Transportation and Communication Statistics in the Palestinian Territory: Annual Report 2000.* Ramallah-Palestine.

All correspondence should be directed to:
Dissemination and Documentation Department / Division of User Services
Palestinian Central Bureau of Statistics
P.O.Box 1647, Ramallah, Palestine.

Tel: 970-2-240 6340
E-Mail: diwan@pcbs.pna.org

Fax: 970-2-240 6343
web-site: <http://www.pcbs.org>

Acknowledgements

The Palestinian Central Bureau of Statistics (PCBS) expresses its gratitude and special thanks to all targeted Palestinian Ministries and institutions for their full cooperation and response in providing necessary data. Special thanks to the Ministry of Transport, Ministry of Post and Telecommunications, Palestinian Geographic Center, Palestinian Airlines, and Telecommunications Company

Financial and technical support for Transportation and Communication statistical program is being provided by the Government of Norway through the Norwegian Agency for Development and Cooperation (NORAD). PCBS extends special thanks to the Government of Norway and NORAD for this support.

Preface

The Palestinian Central Bureau of Statistics (PCBS) is pleased to introduce the annual report 2000 as the third publication of report series on transportation and communication statistics in the Palestinian Territory. The main objective of publishing this series is to establish a comprehensive database covering the main indicators on the transportation and communication sector in the Palestinian Territory, and to formulate a time series about these indicators that show the changes with time.

This report presents the available statistics on the main components of the transportation system. A major component is land transport which covers roads and their length, bypass roads which were built by the Israeli authorities to serve the Israeli settlements, vehicles by type, in addition to other indicators like driving schools, number of garages, etc. The report also shows the main indicators of the air transport sector, which covers the departure and arrival flights from Gaza International Airport. Also the report presents data on post sector including letters with their traditional classification, and the main elements of communication system including main telephone lines and their waiting list, telephone calls and their lengths.

PCBS hopes that this report will provide national governmental organizations, non-governmental organizations, and research institutions in the Palestinian Territory with the necessary statistical data required for planning and development of the Palestinian Territory.

November, 2001

Hasan Abu-Libdeh, Ph.D.
President

Table of Contents

Subject	<u>Page</u>
List of Tables	
List of Figures	
1. Introduction	[13]
2. Concepts and Definitions	[13]
3. Main Findings	[16]
3.1 Introduction	[16]
3.2 Land Transportation	[16]
3.2.1 Road Network	[16]
3.2.2 Vehicles	[17]
3.2.3 Driving Schools	[20]
3.2.4 Bus Companies	[20]
3.2.5 Rent a Car Offices	[20]
3.2.6 Garages	[21]
3.2.7 Road Accidents	[21]
3.3 Air Transportation	[22]
3.4 The Post	[23]
3.5 Telecommunications	[24]
4. Methodology	[27]
5. Data Quality	[27]
References	[30]
Tables	43

List of Tables

<u>Table</u>		<u>Page</u>
Table 1:	Employed Persons in the Transportation, Storage and Communication Sector by Selected Variables, 1995-2000	43
Table 2:	Road Network Length in the Palestinian Territory by Region and Road Type, 1999	45
Table 3:	Bypass Roads Constructed in the Period 1994 - 1999 in the West Bank by Selected Variables	46
Table 4:	Bypass Roads (Under Construction) during 1999 in the West Bank by Selected Variables	49
Table 5:	Proposed Bypass Roads in the West Bank by Selected Variables, till the End of 1999	50
Table 6:	Licensed Road Vehicles in the Remaining West Bank by Governorate and Type of Vehicle, 2000	52
Table 7:	Licensed Road Vehicles in Gaza Strip by Area and Type of Vehicle, 2000	53
Table 8:	Licensed Road Vehicles in the Remaining West Bank by Governorate and Type of Fuel, 2000	54
Table 9:	Road Vehicles in the Remaining West Bank by First Month of Registration and Type of Vehicle, 2000	55
Table 10:	Road Vehicles in Gaza Strip by First Month of Registration and Type of Vehicle, 2000	56
Table 11:	Road Vehicles in the Remaining West Bank by First Month of Registration and Type of Fuel, 2000	57
Table 12:	New Registered Road Vehicles in the Remaining West Bank by Governorate and Type of Vehicle, 2000	58
Table 13:	New Registered Road Vehicles in Gaza Strip by Area and Type of Vehicle, 2000	59
Table 14:	Rate of Motorization Per 1000 Capita in the Remaining West Bank and Gaza Strip by Type of Vehicle and Region, 2000	60
Table 15:	Driving Schools in the Remaining West Bank and Gaza Strip by Selected Variables, 2000	61
Table 16:	Buss Companies in the Remaining West Bank and Gaza Strip by Selected Variables, 2000	62

Table 17:	Rent a Car Offices in the Remaining West Bank and Gaza Strip by Selected Variables, 2000	63
Table 18:	Taxi Offices in the Remaining West Bank and Gaza Strip by Selected Variables, 2000	64
Table 19:	Licensed Garages in the Remaining West Bank and Gaza Strip by Governorate and Type of Garage, 2000	65
Table 20:	Total Number of Road Traffic Accidents and Casualties by Severity of injury and Region in the Remaining West Bank and Gaza Strip, 1996-2000	66
Table 21:	Road Traffic Accidents in the Remaining West Bank and Gaza Strip by Governorate and Month, 2000	67
Table 22:	Casualties in Road Traffic Accidents in the West Bank and Gaza Strip by Governorate and Type of Injury, 2000	68
Table 23:	Regular Flights of the Palestinian Airlines by Selected Variables, 1997-2000	69
Table 24:	Regular Flights of the Palestinian Airlines by Selected Variables, 2000	70
Table 25:	Departure and Arrival Flights from Gaza International Airport by Selected Variables, 2000	71
Table 26:	Mail to the Remaining West Bank by Month and Type of Mail, 2000	72
Table 27:	Dispatched Mail from the Remaining West Bank by Month and Type of Mail, 2000	73
Table 28:	Mail to Gaza Strip by Month and Type of Mail, 2000	74
Table 29:	Dispatched Mail from Gaza Strip by Month and Type of Mail, 2000	75
Table 30:	Number of Main Telephone Lines in the Remaining West Bank and Gaza Strip by Year and Region, 1996-2000	76
Table 31:	Number of Main Telephone Lines in the Remaining West Bank and Gaza Strip by Month, Region and Type of Subscription, 2000	77
Table 32:	Waiting List for Main Telephone Lines in the Remaining West Bank and Gaza Strip by Month and Region, 2000	78
Table 33:	Number of Telephone Calls in the Remaining West Bank and Gaza Strip by Month, Region and Type of Calls, 2000	79
Table 34:	Length of Calls in Minutes in the Remaining West Bank and Gaza Strip by Month, Region and Type of Calls, 2000	80

Table 35:	Number of Dispatched Telephone Calls to Cellular Phone in the Remaining West Bank and Gaza Strip by Month and Region, 2000	81
Table 36:	Internet Service in the Remaining West Bank by Selected Variables, 2000	82

List of Figures

<u>Figure</u>		<u>Page</u>
Figure 1:	Road Network Length in Kilometers in the Palestinian Territory by Region, 1999.	[17]
Figure 2:	Road Network Length in Kilometers in the Palestinian Territory by Road Type, 1999.	[17]
Figure 3:	Percentage Distribution of Vehicles in the RWBGS by Type, 2000	[18]
Figure 4:	Percentage Distribution of Vehicles in the RWB by Fuel Type, 2000	[18]
Figure 5:	Percentage Distribution of New Registered Road Vehicles in the RWB by Type, 2000	[18]
Figure 6:	Percentage Distribution of New Registered Vehicles in GS by Type of Vehicle, 2000	[19]
Figure 7:	Percentage Distribution of New Registered Vehicles in the RWB by Type of Fuel, 2000	[19]
Figure 8:	Rate of Motorization per 1000 Capita in the RWBGS by Region and Type of Vehicle, 2000	[20]
Figure 9:	Percentage Distribution of Garages in the RWBGS by Type of Garage, 2000	[21]
Figure 10:	Number of Road Accidents in the RWBGS by Month, 2000	[21]
Figure 11:	Percentage Distribution of type Injury in the RWBGS, 2000	[22]
Figure 12:	Number of Passengers and Number of Available Seats in Regular Flights of the Palestinian Airlines by Month, 2000	[23]
Figure 13:	Percentage Distribution of Mail to the RWB, 2000	[23]
Figure 14:	Percentage Distribution of Dispatched Mail from the RWB, 2000	[24]
Figure 15:	Percentage Distribution of Mail to GS, 2000	[24]
Figure 16:	Number of Main Telephone Lines in the RWBGS by Month, 2000 (in thousands)	[25]
Figure 17:	Percentage Distribution of Number of calls in the RWBGS, 2000	[25]
Figure 18:	Number of Calls in the RWBGS by Type and Month, 2000 (in millions)	[26]
Figure 19:	Percentage Distribution of Calls Length by Type, 2000	[26]

1. Introduction:

The Transportation and Communication sector is one of the main economic sectors in the Palestinian society. This sector contributes to the gross domestic product significantly, and provides working opportunities for a considerable amount of people.

Geographically, this sector occupies special importance because it represents the primary means of communication inside the society and between the society and the others.

This report is the third one of a series of annual reports which aims to provide the data required to describe the transportation and communication situation in the Palestinian Territory in a comprehensive and standardized way.

The main objective of this report is to collect, arrange, classify, and publish data related to the main indicators of the transportation and communication sector in Palestine in 2000, in order to provide the necessary data for research, analysis, and decision making purposes.

2. Concepts and Definitions:

Employee:	A person who works for a public or private employer and receives remuneration in wage, salary, commission, tips, piece-rates or pay in kind
Average Weekly Working Hours:	Total weekly working hours of employees whose wages are known, divided by the number of employees.
Average Monthly Working Days per Employee:	Total monthly workdays of employees whose wages are known divided by the number of employees.
Average Daily Wage per Employee:	Total net wages paid to all employees divided by total workdays. Wages received in different currencies are converted into New Israeli Shiekles according to the exchange rate in the survey month.
Main Road:	Serves for national or inter district traffic.
Regional Road:	Branching off from, or lining, main roads.
Access Road:	Leading from a main or regional road to a certain point within a locality.
Vehicle:	A vehicle running on wheels and intended for use on roads.
Motor Vehicle:	A vehicle fitted with auto propulsive engine, it is normally used for carrying persons or goods, and drawing vehicles.
Private Car:	A motor vehicle, other than motorcycle intended for the carriage of passengers and designed to seat no more than 9 persons (including the driver).

Taxi:	A motor vehicle intended for the carriage of passengers (in return for payment), and designed to seat no more than 9 persons (including the driver), and described in its license as a taxi.
Motorcycle:	Two wheeled motor vehicles with or without sidecar. This category includes scooter, three-wheeled vehicles not exceeding 400 kg. Motorcycles are classified according to the engine capacity as: less than 50 cm ³ , 50-100 cm ³ , 100-250 cm ³ , and greater than 250 cm ³ .
Bus:	A motor vehicle designed to carry more than 9 passengers (including the driver).
Trailer:	Goods road vehicles designed to be hauled by a road motor vehicle. Excluding agricultural trailers and caravans.
Semi-Trailer:	Goods road vehicle with no front axle designed in such a way as to be hauled by road tractor.
Road Tractor:	A motor vehicle designed exclusively or primarily to haul other vehicles, which are not power-driven. Agricultural tractors are excluded.
Truck:	A motor vehicle designed for another purpose than passenger transport, its height is more than 250 cm, and described in its license as a truck.
Commercial Car:	A motor vehicle designed for another purpose than passenger transport, weights more than 2200 kg, its height is more than 175 cm and less than or equal to 250 cm, and described in its license as a commercial vehicle.
Other Vehicle:	A vehicle designed for purposes other than the carriage of passengers or goods. This category includes: ambulances, mobile cranes, self-propelled rollers, bulldozers with metallic wheels or tracks, vehicles for recording film, radio, and TV programs, mobile library vehicles, towing vehicles for vehicles in need of repair.
Road Traffic Accident:	An accident, which occurred as a result of the vehicle being in a state of motion and in which people were injured.
Killed in Road Traffic Accident:	A person who died as a result of the accident, or died of his injuries within 30 days of the accident.
Seriously injured:	A person who was hospitalized as a result of the accident for a period of 24 hours or more.
Slightly injured:	A person who was injured as a result of road traffic accident and was not hospitalized, or was hospitalized for short period (up to 24 hours).
Regular Flights:	A series of flights fulfilling at least the following conditions: they are performed by a passenger aircraft, their tickets are open for free sale to the general public; they are planned and adjusted according to the needs

of traffic, carried out according to existing aviation agreements, The operating license and the fixed timetables are also available to the general public.

- Irregular Flights:** All the flights for remuneration other than those reported under regular flights.
- Number of Passengers in a Flight:** All passengers, excluding airplane staff and infants (less than 2 years of age).
- Number of Available Seats:** The total number of passenger seats available for sale between each pair of airports on a flight stage (excludes seats not actually available for the carriage of passengers because of the weight of fuel or other load).
- Letter:** A post matter that has the property of communication. It could be written, typed or both. This includes commercial samples, which are contained in an envelope. The minimum limit of the shortest length is 140, while the minimum limit of the shortest width is $90 \text{ mm} \pm 2 \text{ mm}$. The sum of length, width, and thickness should not be greater than 900 mm. The maximum limit of the length of any dimension is 600 mm. The weight of the letter should be between 20-2000 g.
- Regular Letter:** A letter that is sent by normal post with regular fees.
- Express Mail:** A letter intended to be delivered quickly (24 hours) from the moment of reception by the post center. Normally extra fees are applied.
- Printed Matter:** A post matter, which is printed by a printing shop, or by any other method such as copying, books, and booklets. It has a cultural and scientific property, and not communication property. The minimum limit of the printed material length and width is 140, $90 \text{ mm} \pm 2 \text{ mm}$ respectively. The maximum limit of the sum of length, width, and thickness is 900 mm. The maximum limit of the length of any dimension is 600 mm. The maximum weight of the printed material is 2 kg, it is also allowable to reach 5 kg when the printed material is book.
- Registered Letter:** A letter to which extra fees is applied and for which the sender gets a receipt. It is normally delivered to the addressee or other person acting as such after checking his identity and taking his signature on a receipt.
- Post Packet:** Material posted as presents, such as food, clothes, beauty-care materials, perfumes, and commercial samples. The minimum limit of post packet length and width is 140, $90 \text{ mm} \pm 2 \text{ mm}$ respectively. The maximum limit for the sum of length, width, and thickness is 900 mm. The maximum limit of the length of any dimension is 60 mm. The maximum weight of the post packet is 2 kg.
- Parcel:** Material posted as closed flexible or rigid packet, containing papers,

books, food, clothes, etc. The maximum limit for the sum of the parcel lengths, twice the width, and twice the thickness is 3 m. The maximum limit of the length of any dimension is 1.5 m. The maximum weight of inland parcel is 20 kg, while in case of parcels sent abroad the maximum limit is 5-20 kg, or according to the rules of the receiving country.

Telegram	Letter with a limited amount of words, sent inland or abroad by telex, fax, or telephone. Fees are paid according to the number of words.
Local Call:	The call, which is sent or received by using the same switchboard.
National Call:	The call, which is sent or received by using two switchboards in the same country.
International Call:	The call, which is sent from one country to another.
Remaining West Bank:	West Bank, excluding those parts of Jerusalem annexed by Israel in 1967.
RWB:	Remaining West Bank.
GS:	Gaza Strip.
RWBGS:	Remaining West Bank and Gaza Strip.
PT:	Palestinian Territory.
Symbols Used in Tables:	(-): Null. (.): Data not available.

3. Main Findings:

3.1 Introduction:

The Transportation and communication sector is important due to its contribution to the gross domestic product and the provision of working opportunities, in addition to its vital role in connecting different localities.

This report shows that the transportation and communication sector contributed with 4.9% of the total job opportunities in the Palestinian Territory in 2000. The average monthly working days in this sector were 24.4 days, and this is slightly higher than that of the total economic sectors (22.7 days).

The daily median wage of working days in this sector was 66.3 NIS compared to 69.2 NIS (US \$16.95) in other economic sectors (*Table 1*).

3.2 Land Transportation:

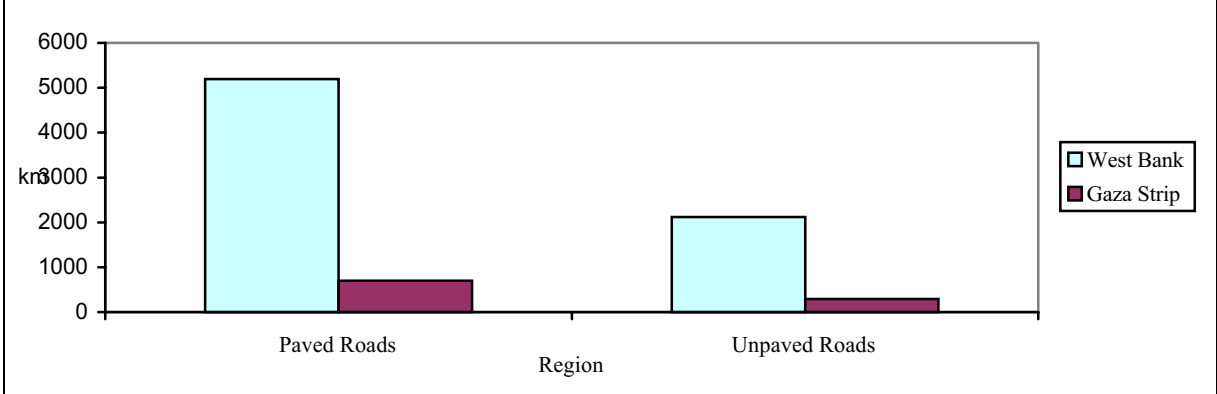
This section aims to present the results related to roads, vehicles, driving schools, bus companies, rent a car offices, garages and road accidents.

3.2.1 Road Network:

The available data of the Palestinian road network varies according to the source of data. The data of the Palestinian Geographic Center (PALGRIC) shows that the total road network length in the Palestinian Territory was 8,310.0 km at the end of 1999, distributed as 5,898.1 Km paved roads and 2,411.9 Km unpaved roads. The data shows that the total length of the road network in the WB was 7,318 km and 992.0 Km in GS (*Table 2*).

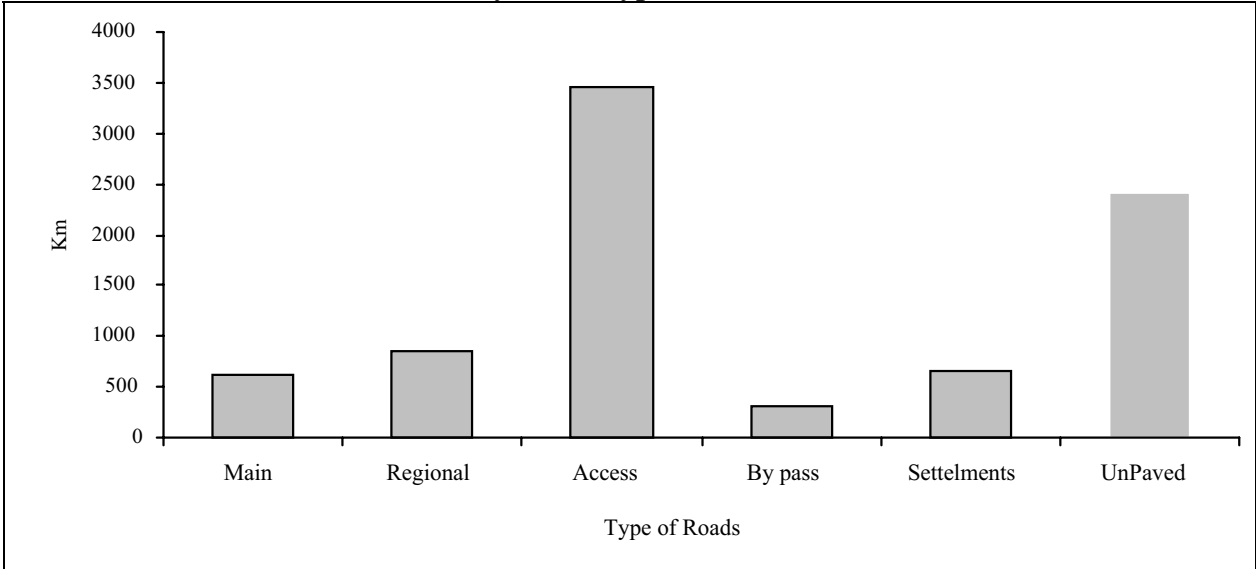
Figures 1 and 2 show the length of road network by region and type of road.

Fig. 1: Road Network Length in Kilometers in the Palestinian Territory by Region, 1999



It is worth noting that provided data varies in its geographical coverage.

Fig. 2: Road Network Length in Kilometers in the Palestinian Territory by Road Type, 1999

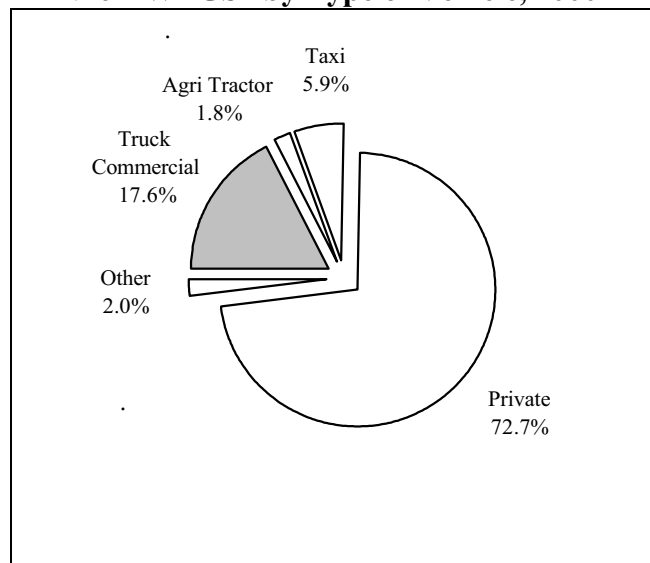


3.2.2 Vehicles:

The total number of licensed vehicles in the RWBGS in 2000 was 123,868 distributed as 60.4% in the RWB, and 39.6% in GS.

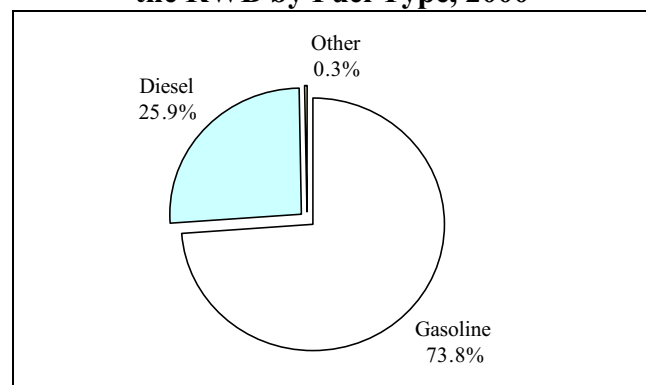
The percentage distribution of licensed vehicles in the RWBGS in 2000 shows that the majority were private cars (72.7%), and this percentage was 70.8% in the RWB, and 75.7% in GS. On the other hand, the percentage of trucks and commercial cars was 17.6% in the RWBGS, and this percentage was 17.8% in the RWB compared to 17.3% in GS. Taxis formed 5.9% of the total vehicles in the RWBGS, and this percentage was higher in the RWB than that in GS (8.1% and 2.4% respectively). The percentage of agricultural tractors in the RWBGS was 1.8%, and this percentage was 1.5% in the RWB compared to 2.1% in GS (*Fig. 3 and Tables 6 & 7*).

Fig. 3: Percentage Distribution of Vehicles in the RWBGS by Type of Vehicle, 2000



Concerning the number of licensed vehicles in the RWB, there were 73.8% of the vehicles, which used gasoline. On the other hand 25.9% of the vehicles used diesel. The remaining percentage (0.3%) was classified as other, including non-motorized vehicles (trailers & semi-trailers) and vehicles with non-stated fuel (*Fig. 4 & Table 8*).

Fig. 4: Percentage Distribution of Vehicles in the RWB by Fuel Type, 2000

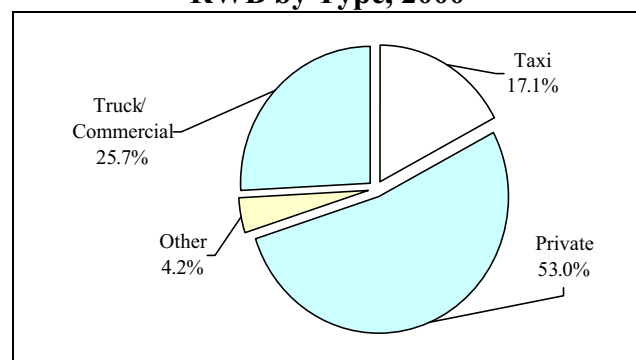


It should be noticed that the distribution of licensed vehicles in GS by type of fuel is not presented, due to the fact that this data was not available at the time of preparing this report.

Regarding new registered road vehicles in the RWBGS in 2000, the monthly average of registered vehicles was approximately 662 vehicles, with 79.1% in RWB and 20.9% in GS (*Table 9 & Table 10*)

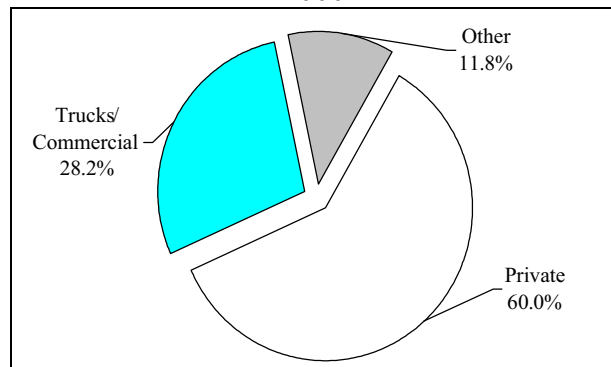
The percentage distribution of registered new vehicles in the RWB by type shows that the highest percentage was that of registered private cars (53.0%) followed by the trucks and commercial cars, which was 25.7%. The percentage of taxi was 17.1%. On the other hand the percentage of other vehicles, which cover moped, motorcycles, buses, trailers & semi-trailers, road tractors, agricultural tractors, in addition to other vehicles, was 4.2% (*Fig. 5*).

Fig. 5: Percentage Distribution of New Registered Road Vehicles in the RWB by Type, 2000



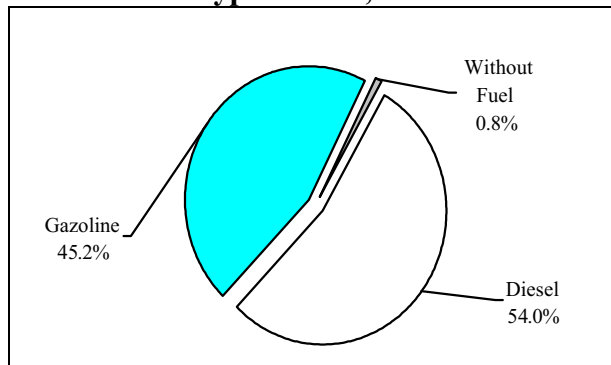
In GS, the majority of new registered vehicles in 2000 were private cars and trucks/commercial vehicles, where they formed 60.0% and 28.2% respectively. While the remaining vehicles, which include taxis, motorcycles, buses, trailers & semi-trailers, road tractors, and agricultural tractors, in addition to other vehicles formed 11.8% (**Fig. 6**).

Fig. 6: Percentage Distribution of New Registered Vehicles in GS by Type of Vehicle, 2000



On the other hand, the majority of new registered vehicles in the RWB in 2000 use diesel (54.0%), while 45.2% of the vehicles use gasoline, and the remaining (0.8%) were non-motor vehicles (**Fig. 7**).

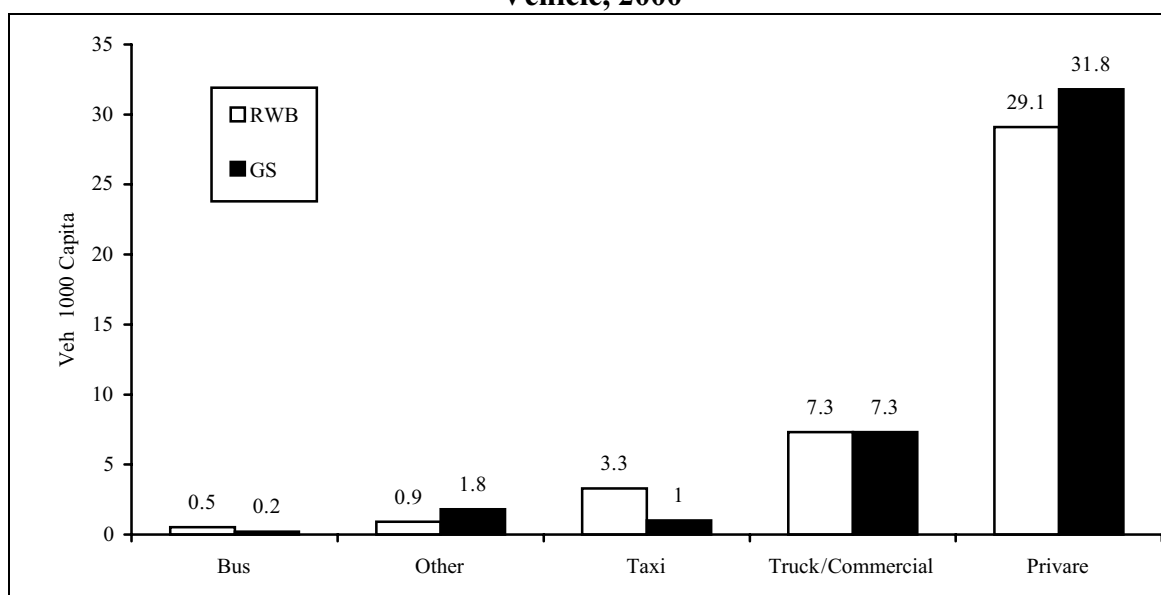
Fig. 7: Percentage Distribution of New Registered Vehicles in the RWB by Type of Fuel, 2000



It should be noticed that the percentage distribution of new registered vehicles in GS by type of fuel is not presented in this report, due to unavailability of data from the source at the time of preparing the report.

Regarding rate of motorization in the RWBGS, it was 41.4 vehicles per 1000 capita. The rate of private cars was 29.1 and 31.8 vehicle per 1000 capita in the RWB and GS respectively. While the rate of taxis was 3.3 in the RWB, and in GS it was 1.0 vehicles per 1000 capita (**Figure 8**).

Fig. 8: Rate of Motorization per 1000 Capita in the RWBGS by Region and Type of Vehicle, 2000



3.2.3 Driving Schools:

The total number of driving schools in the RWBGS was 207, of which 157 were in the RWB, and 50 were in GS (*Table 15*).

We observe that the average number of trainers per school in the RWB was 4.5, while it was 3.8 trainers in GS. The average number of working vehicles per school was 3.7 and 2.7 in the RWB, and GS respectively.

3.2.4 Bus Companies:

The total number of bus companies in the RWBGS was 86 companies at the end of 2000, and the total number of working buses in these companies was 706. There were only 2 companies in GS compared with 84 companies in the RWB; however, the number of working buses was greater in the companies of GS compared with those of the RWB. The average number of buses per company in the RWB was 7.7 buses, while it was 29 in GS (*Table 16*).

3.2.5 Rent a Car Offices:

The total number of rent a car offices in the RWBGS was 57, out of which 51 were in the RWB, and 6 offices in GS. The number of working taxis in these offices was 1,159 distributed as 1,034 in the RWB, and 125 in GS (*Table 17*).

The percentage distribution of rent a car offices by governorate shows that the highest percentage was in Ramallah & Al-Bireh Governorate (27.5%), with the percent of working vehicles forming 38.1% of the total vehicles.

On the other hand, it is noticed that rent a car offices in GS was confined to be in Gaza Governorate, due to centralization of services sector in this Governorate.

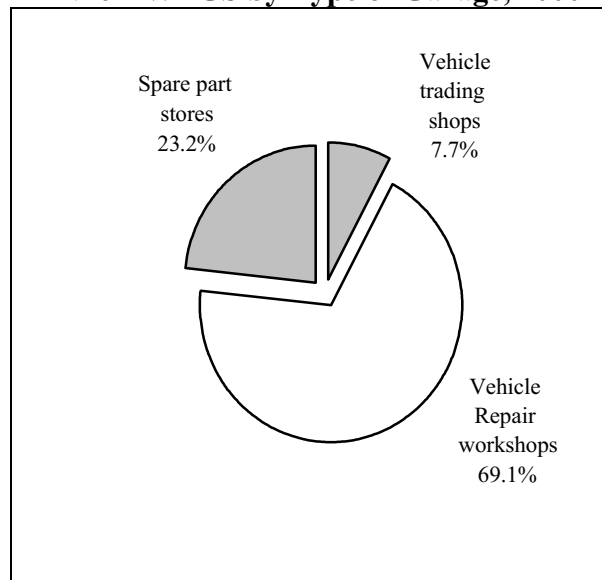
3.2.6 Garages:

This term locally describes vehicle repair workshops, spare part stores, and vehicle-trading shops.

The total number of licensed garages in the RWBGS was 3,317 garages at the end of 2000, with percentage of 58% in the RWB and 42% in GS respectively.

The percentage distribution of licensed garages at the end of 2000 shows that the majority of garages were used for repair of motor vehicles (69.1%). This type of garages formed 74.4% in the RWB, and 61.7% in GS. On the other hand, 7.7% of garages were used for vehicles trading, and this percentage distributed as 7% in the RWB compared with 8.8% in GS. However 23.2% of garages were used as stores of spare parts of motor vehicles, and this type of garages formed 18.6% in the RWB and 29.5% in GS (*Fig. 9 & Table 19*).

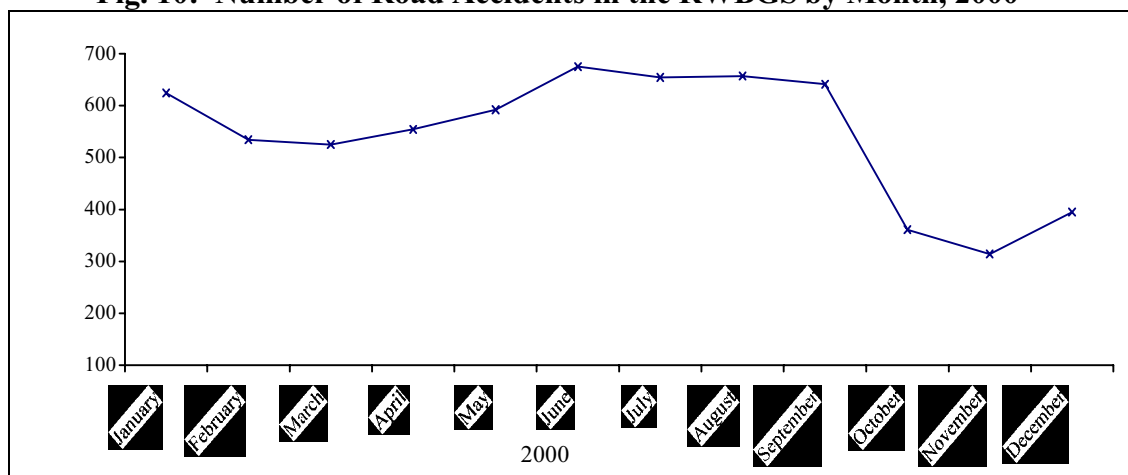
Fig. 9: Percentage Distribution of Garages in the RWBGS by Type of Garage, 2000



3.2.7 Road Accidents:

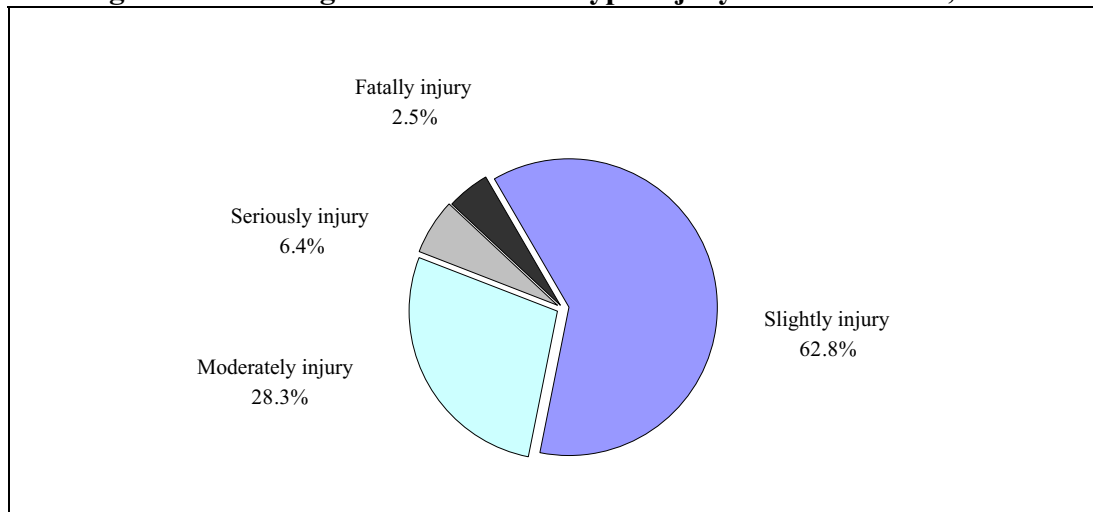
The total number of road accidents in the RWBGS amount to 6,526, of which 4,541 occurred in the RWB and 1,985 in the Gaza Strip. Figure 10 shows the number of road accidents in the RWBGS by month, 2000. (*Fig. 10 & Table 21*).

Fig. 10: Number of Road Accidents in the RWBGS by Month, 2000



On the other hand, the number of casualties resulting from those accidents reached 7,453 (5,339 in the RWB and 2,114 in Gaza Strip). Figure 11 show the percentage distribution of type injury in the RWBGS in 2000 is as follows: 62.8% slightly injured, 28.3% moderately injured, 6.4% seriously injured, 2.5% fatally injured (*Table 22*).

Fig. 11: Percentage Distribution of Type Injury in the RWBGS, 2000



3.3 Air Transportation:

The total number of departure and arrival flights from Gaza International Airport at 2000 was 2,254 flights, out of which 1,926 were regular flights with 73,659 passengers, and the total number of available seats in these flights was 186,620, with occupancy ratio of 39.5%. The total number of irregular flights was 328 with 13,949 passengers, and the total number of available seats was 30,128 with an occupancy ratio of 46.3% (**Table 25**).

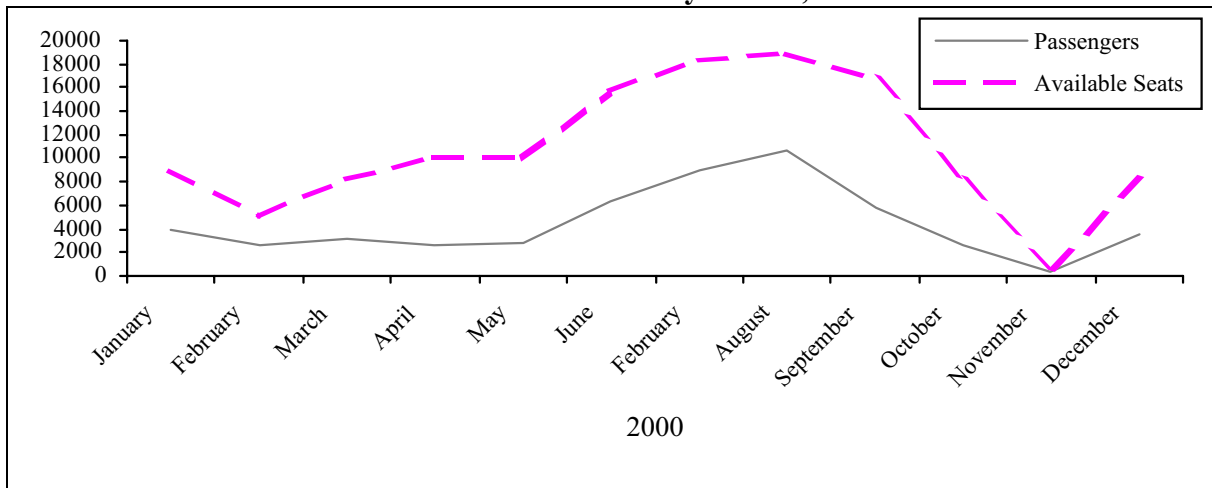
Regarding the regular flights of the Palestinian Airlines in 2000, the monthly average of flights was 113, with an average number of 4,455 passengers. The average number of available seats was 10,772, with an occupancy ratio of 41.4% (**Table 24**).

During the same period, the maximum number of passengers was 10,589 that were carried in 198 flights, and the number of available seats was 18864, making an occupancy ratio of 56.1%.

Figure (12) presents the regular flights of the Palestinian Airlines to and from Gaza International Airport. The table shows that the maximum number of passengers was in August compared to the minimum number in November, and the maximum number of available seats was in August compared to the minimum number in November.

Note that during November there was a decrease on the number of trips mad compared with the other months of the year and that was due to the Israeli enclosure for the Palestinian territory and Gaza international airport.

Figure 12: Number of Passengers and Number of Available Seats in Regular Flights of the Palestinian Airlines by Month, 2000



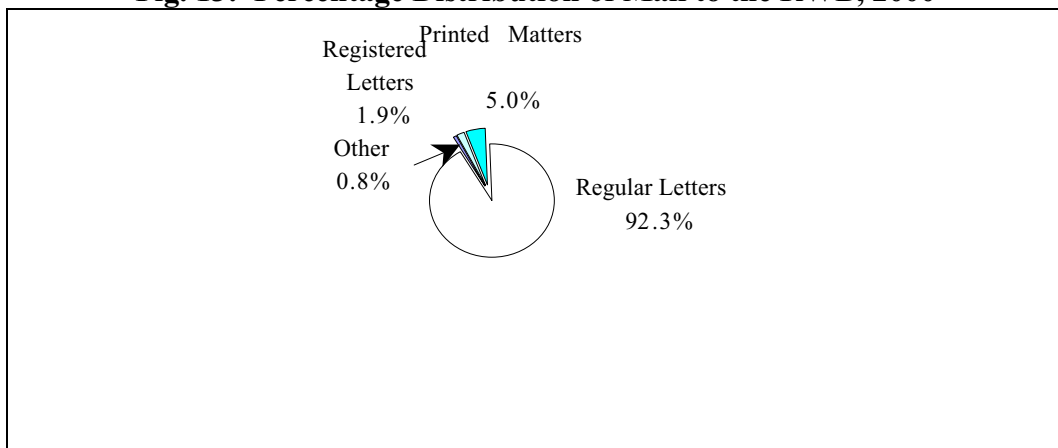
3.4 The Post:

Mail Received in the RWB consisted of 4,203,706 postal materials in 2000, with a monthly average of 350,309 pieces (*Table 26*).

The percentage distribution of these materials shows that the majority were regular letters, where they formed 92.3%. The percentage of printed matters was 5.0%, while the percentage of registered letters was 1.9%, and the remaining percentage (0.8%) covered express mail, parcels, telegrams, and small packets (*Fig. 13*).

The maximum number of postal materials was in July, where there were 579,136 postal materials, and the minimum number of these materials was in October, where there was 130,708 pieces (*Table 26*).

Fig. 13: Percentage Distribution of Mail to the RWB, 2000

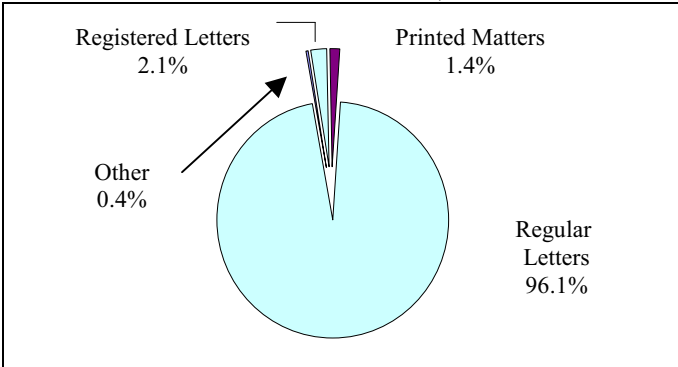


Regarding dispatched mail from the RWB in 2000, there were 3,107,891 postal materials, with a monthly average of 258,991 pieces (*Table 27*).

The fact that telephone bills are considered as regular letters made them a majority of postal materials (96.1%). The percentage of registered mail was 2.1%, and that of printed matters formed 1.4%, while the remaining (0.4%) was classified as other postal materials which contain parcels, telegrams, and small packets (*Fig. 14*).

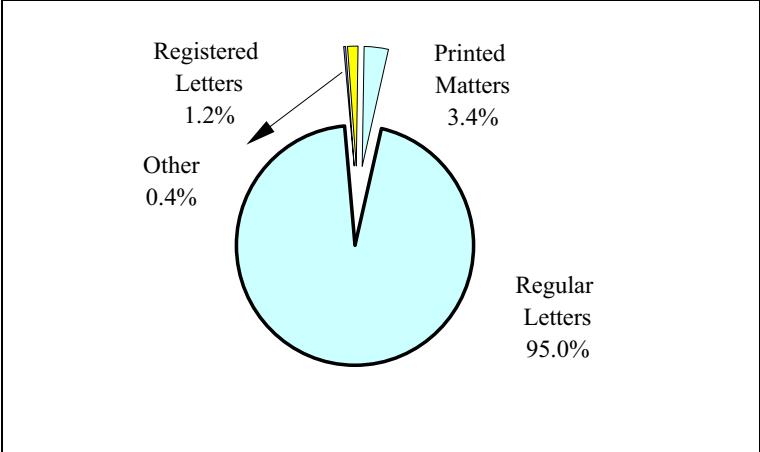
The maximum number of these materials was in July 2000, there were 472,205 pieces in this month, and the minimum number of these materials (78,706) was in October (*Table 27*).

Fig. 14: Percentage Distribution of Dispatched Mail from the RWB, 2000



The total number of postal materials received in GS was 1,009,469 in 2000, with a monthly average of 84,122. Regular letters formed 95.0% of the total materials. This was due to the consideration of telephone bills as regular letters. Printed matters formed 3.4%. Registered letters formed only 1.2%, while the rest (remaining postal materials which contain express mail, parcels, telegrams, and small packets) formed only 0.4% (*Fig. 15*).

Fig. 15: Percentage Distribution of Mail to GS, 2000



The maximum number of these materials was 156,421 in July, while the minimum number was 29,790 in June (*Table 28*).

The dispatched mail from GS in the same year was 702,385 postal materials, averaging 58,532 pieces per month. The maximum number of these materials was in July 117,024 while the minimum number was in October 15,011 (*Table 29*).

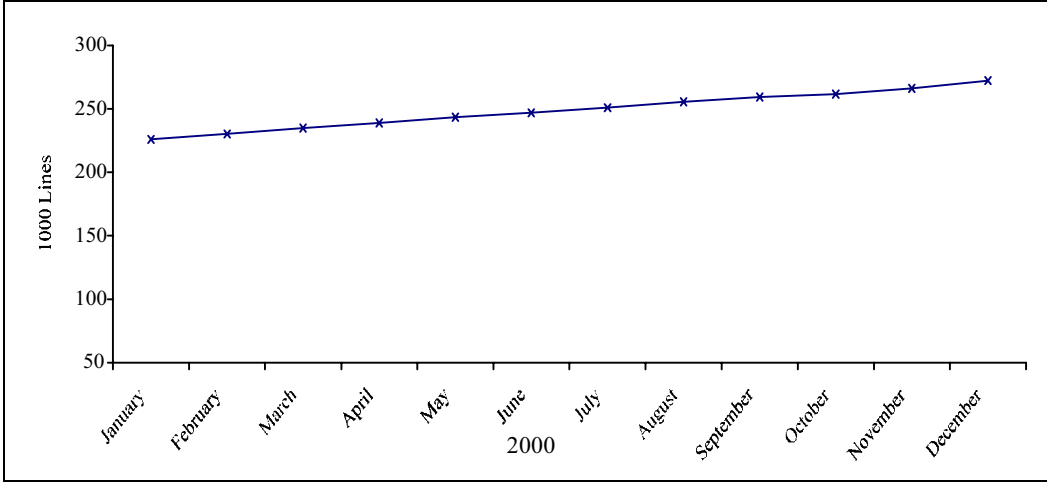
The percentage distribution of dispatched mail shows that regular letters formed 96.3%, Printed materials formed 2.3%. Registered letters formed 1.3%. while the rest (remaining postal materials which contain telegrams, and small packets) formed only 0.1%. (*Table 29*).

3.5 Telecommunications:

The total number of main telephone lines in the RWBGS at the end of 2000 was 272,211 lines with a growth rate of 22.5% compared with the previous year, where the monthly average

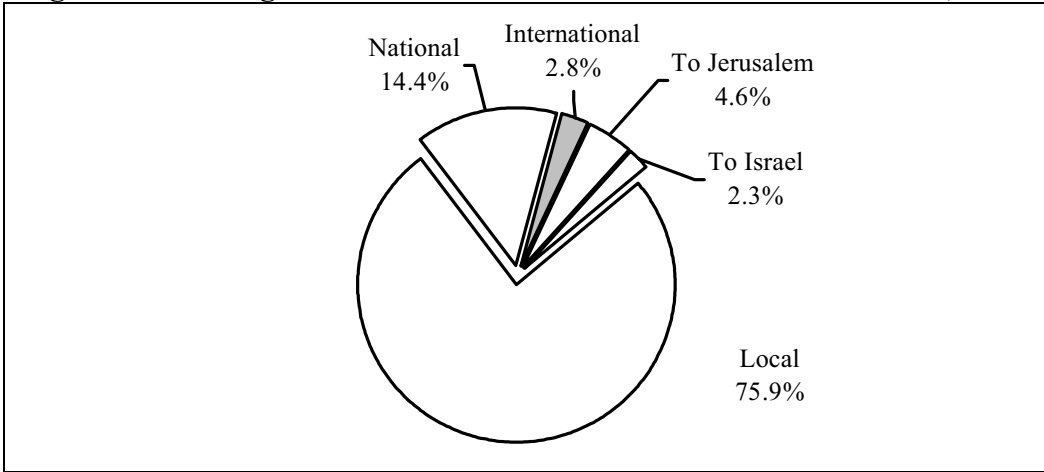
increase of these lines was of 4,168 lines during 2000 (*Fig. 16 and Tables 30 & 31*). This resulted in the reduction of the waiting list of requests were 14,488 at the end of 2000, with a rate of 1,904 requests per month (*Table 32*).

Fig. 16: Number of Main Telephone Lines in the RWBGS by Month, 2000 (In thousands)



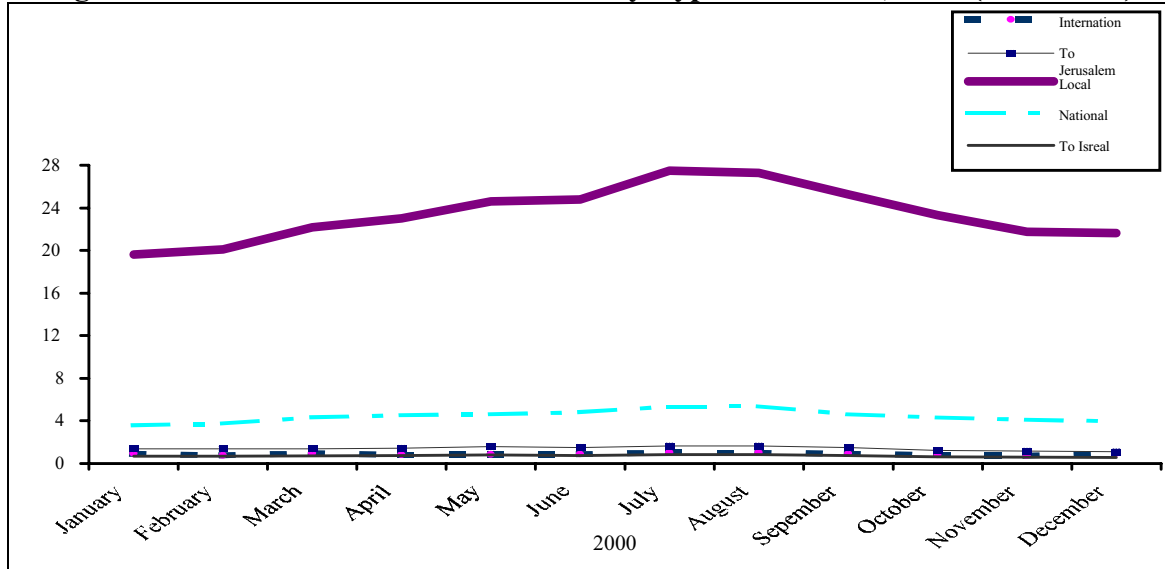
The monthly average number of telephone calls in the RWBGS was 30,848,326 in 2000. The percentage distribution of number of calls shows that local calls (using the same switchboard in the same country) formed 75.9% of the total calls, while it was 66.8% in the RWB and 33.2% in GS. National calls (using two switchboards in the same country, formed 14.4%, this percentage was 70.9% in the RWB and 29.1% in GS. International calls formed 2.8%, where this percentage was 74.4% in the RWB, and 25.6% in GS. On the other hand calls to Israel and calls to Jerusalem (those parts of Jerusalem annexed by Israel in 1967 and West-Jerusalem) formed 2.3% and 4.6% respectively out of the total calls (*Fig. 17*).

Fig. 17: Percentage Distribution of Number of Calls in the RWBGS, 2000



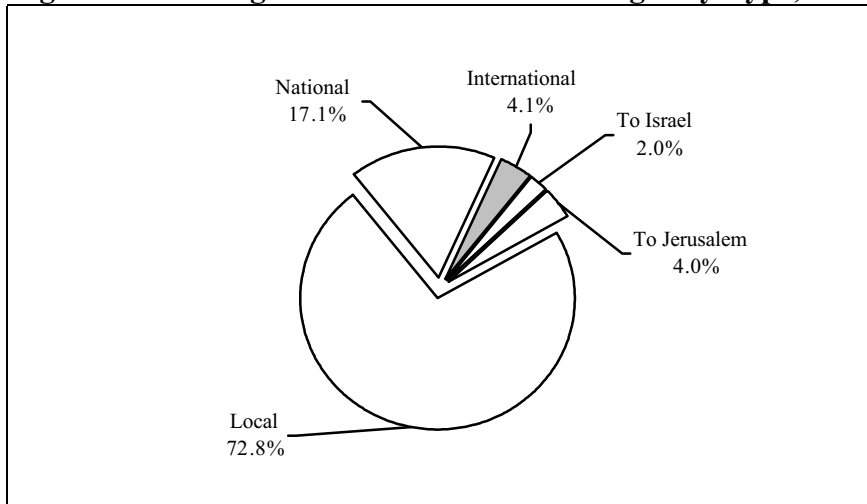
It is worth mentioning that the maximum number of calls was in July, where there were 36,330,166 calls, which equivalent to 9.8% of total calls (*Table 33*).

Fig. 18: Number of Calls in the RWBGS by Type and Month, 2000 (in millions)



In respect to the total length of telephone calls, the monthly average was 83,299,749 minutes in 2000 distributed as follows: 72.8% for local calls, 17.1% for national calls (using two switchboards in the same country, 4.1% for international calls, 2.0% for calls to Israel and 4.0% for calls to Jerusalem (those parts of Jerusalem annexed by Israel in 1967 and West-Jerusalem) (*Fig. 19 & Table 34*).

Fig. 19: Percentage Distribution of Calls Length by Type, 2000



Regarding the cellular phone, the monthly average number of calls from RWB and GS to Palestinian cellular phone and Israeli cellular phone were 8,549,219 during 2000. The percent distribution shows that 76.3% of these calls where to Israeli cellular phone, and 23.7% where to Palestinian cellular phone. (*Table 35*).

Regarding Internet service in the RWBGS, the number of companies providing this service was 6 companies at the end of 2000. The number of employees in these companies was 92, mostly male employees (83.7%). The number of subscribed persons to the Internet services in

the RWBGS at the end of 2000 was 7,076 subscribers, with only 69 subscribers restricted to the electronic mail service (*Table 36*).

4. Methodology:

- **Data Collection:**

The data of this report is based primarily on administrative records of various institutions, in addition to data extracted from some surveys performed by PCBS. After getting data from its sources, it was rearranged, reclassified, and then tabulated in a way to achieve the purpose of this report.

- **Coverage:**

Although the main objective of publishing annual reports on transportation and communication is to construct time series of the main indicators related to transportation and communication sector in the Palestinian Territory, it is noticed that this report mainly covers the main indicators related to transportation and communication during 2000, with only a few indicators from past years

The majority of data does not provide information about Jerusalem, except data on labor force, road network length, and bypass roads.

Data related to express mail provided by private companies is not presented in this report, where the data related to post in this report based on monthly reports from the Ministry of Post and Telecommunications (MOPT), which do not contain this item. It is expected that MOPT will provide this service in the near future.

5. Data Quality:

This section presents technical notes concerning the statistical quality of the data, which should be taken into consideration.

1. There is no available data about road network length in the Palestinian Territory for the year 2000. Knowing that the main road length in the WB had been corrected according to Palestinian Geographic Center data.
2. While using bypass road data, it should be noticed that the figures of the area do not necessarily equal the product of the length by the width; because the width sometimes represents the distance between building boundaries. In addition to that the concerned persons in the Arab Studies Society approximate some of the figures concerning bypass roads in this report.
3. There is a great reduction in the number of licensed vehicles mentioned in this report compared with the data published in previous reports. Also it was noticed that the data of licensed vehicles decreases with time, and this contradicts the expected normal increase with time. The Ministry of Transport declared that this data is the best available till the time of preparing the report.
4. The number of vehicles in GS by governorate and fuel type is not provided in this report.

5. In the past period, no standard was followed in collection of mail data, and therefore unexpected and irregular variations occurred. This made it difficult to compare 2000 data with other published data of previous years. It is worth mentioning that unified classification based on international standards was developed with the cooperation of the Ministry of Post and Telecommunication.
6. National calls data covers dispatched calls from the RWBGS, while calls to Jerusalem data covers dispatched calls from the RWBGS to those parts of Jerusalem annexed by Israel in 1967 and West-Jerusalem.
7. Data related to cellular phone represents the number of dispatched calls from RWBGS to Palestinian cellular phone (Jawwal) and Israeli cellular phone.
8. Internet service data reflects the number of Palestinian companies which provide this service, regardless of whether the subscribers are Palestinians or not.

References

1. MEDSTAT Programme, MED-TRANS Project on Transport Statistics, Larnaca (Cyprus), 6-10 July 1998. EU Council Directives/ Regulations on Transport Statistics.
2. Palestinian Central Bureau of Statistics, 2000. Transportation and Communication Statistics in the Palestinian Territory: Annual Report 1999. Ramallah-Palestine.
3. Palestinian Central Bureau of Statistics, 1999. Transportation and Communication Statistics in the Palestinian Territory: Annual Report 1998. Ramallah-Palestine.
4. Palestinian Central Bureau of Statistics, 1998. Transportation and Communication Statistics in the West Bank and Gaza Strip, Current Status Report (Series. No. 8). Ramallah-Palestine.
5. The Intersecretariat Working Group on Transport Statistics EUROSTAT, ECMT, UN/ECE. Glossary for Transport Statistics. Second Edition.