



**2012**

**2013 /**

تم إعداد هذا التقرير حسب الإجراءات المعيارية المحددة في ميثاق  
الممارسات للإحصاءات الرسمية الفلسطينية 2006

© رمضان، 1434هـ - تموز، 2013.  
جميع الحقوق محفوظة.

في حالة الاقتباس، يرجى الإشارة إلى هذه المطبوعة كالتالي:

الجهاز المركزي للإحصاء الفلسطيني، 2013. احصاءات النقل والاتصالات في فلسطين: التقرير السنوي 2012.  
رام الله - فلسطين.

جميع المراسلات توجه إلى:  
الجهاز المركزي للإحصاء الفلسطيني  
ص.ب. 1647، رام الله - فلسطين

هاتف: 2 2982700 (970/972)

فاكس: 2 2982710 (970/972)

الرقم المجاني: 1800300300

بريد إلكتروني: diwan@pcbs.gov.ps

صفحة إلكترونية: <http://www.pcbs.gov.ps>

الرمز المرجعي: 1992



Source: Palestinian Central Bureau of Statistics



.

**2012**

**2013 (CFG)**

**.(SDC)**

.

**(CFG)**



•

•

•

•

•

•





( )

**:ISIC-4**

**:NIS**

(-)

(..) :



15		
17		:
17		1.1
17		2.1
27		3.1
31		4.1
33		:
33		1.2
33		2.2
33	( )	3.2
33		4.2
33		5.2
34		6.2
34		7.2
34		8.2
35		
41		

<b>41</b>				<b>:1</b>
			2012-2008	
<b>43</b>	2012			<b>:2</b>
<b>44</b>				<b>:3</b>
			2012	
<b>45</b>	2012			<b>:4</b>
<b>46</b>	2012			<b>:5</b>
<b>47</b>		1000		<b>:6</b>
			2012	
<b>48</b>				<b>:7</b>
			2012	
<b>49</b>	2012			<b>:8</b>
<b>50</b>	2012 -1999			<b>:9</b>
<b>51</b>	2012			<b>:10</b>
<b>52</b>				<b>:11</b>
			2012 -2008	
<b>53</b>	2012			<b>:12</b>
<b>54</b>				<b>:13</b>
			2012	
<b>55</b>	2012			<b>:14</b>
<b>57</b>	2012			<b>:15</b>
<b>59</b>		2012		<b>:16</b>
<b>60</b>				<b>:17</b>
			2012	
<b>61</b>	2012-1999			<b>:18</b>

<b>62</b>	2012		<b>:19</b>
<b>63</b>		2012	<b>:20</b>
<b>64</b>		2012	<b>:21</b>
<b>65</b>	2012		<b>:22</b>
<b>66</b>			<b>:23</b>

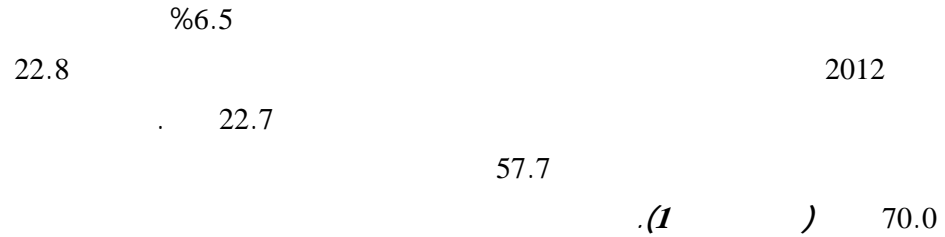
2012

.2012

**2013**

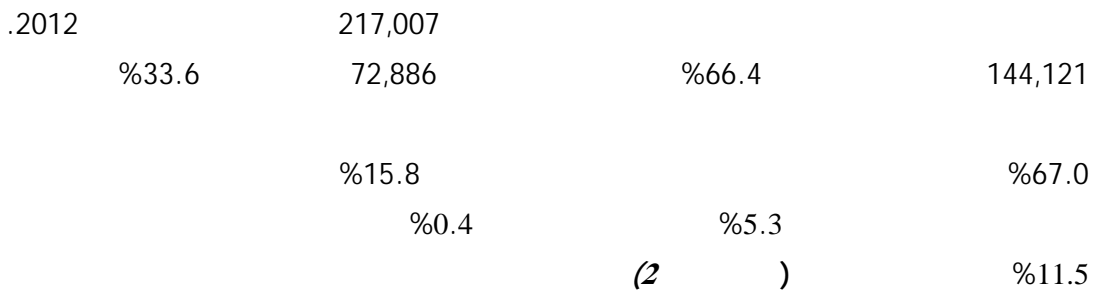


**1.1**

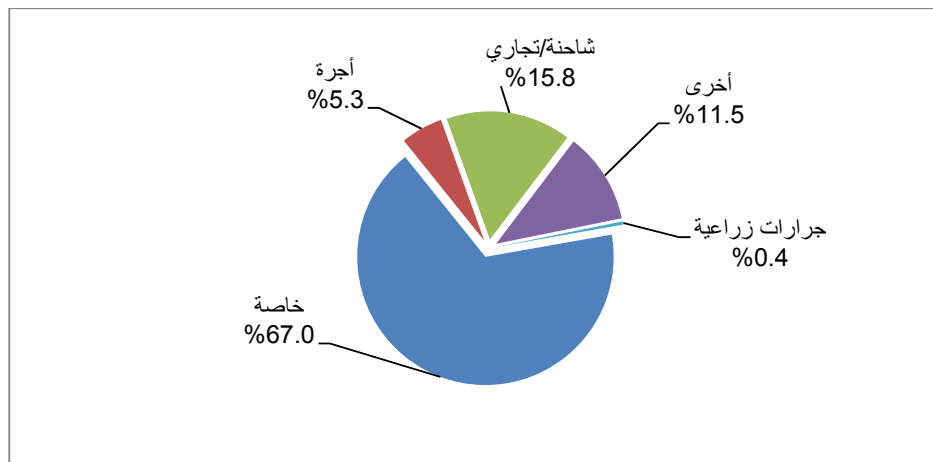


**2.1**

**1.2.1**



**2012**



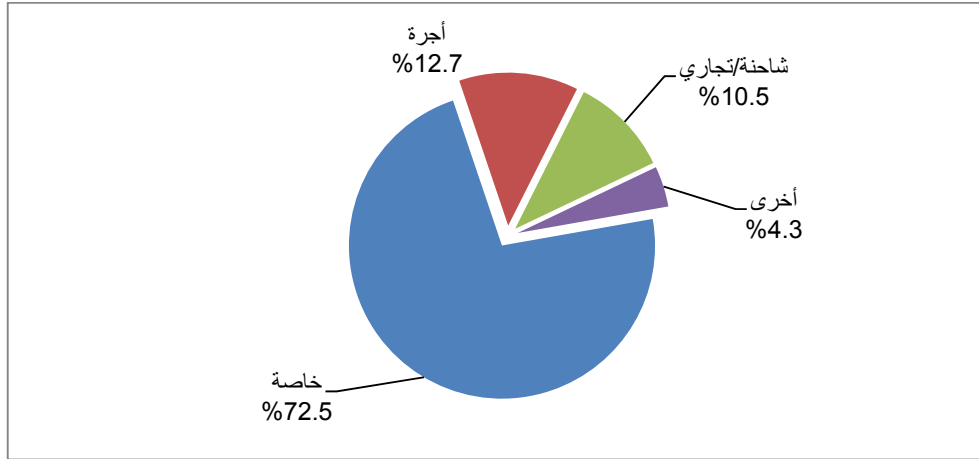
**2012**





1,136 ) ( 4.3% .(3

2012

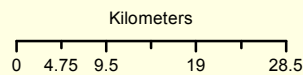
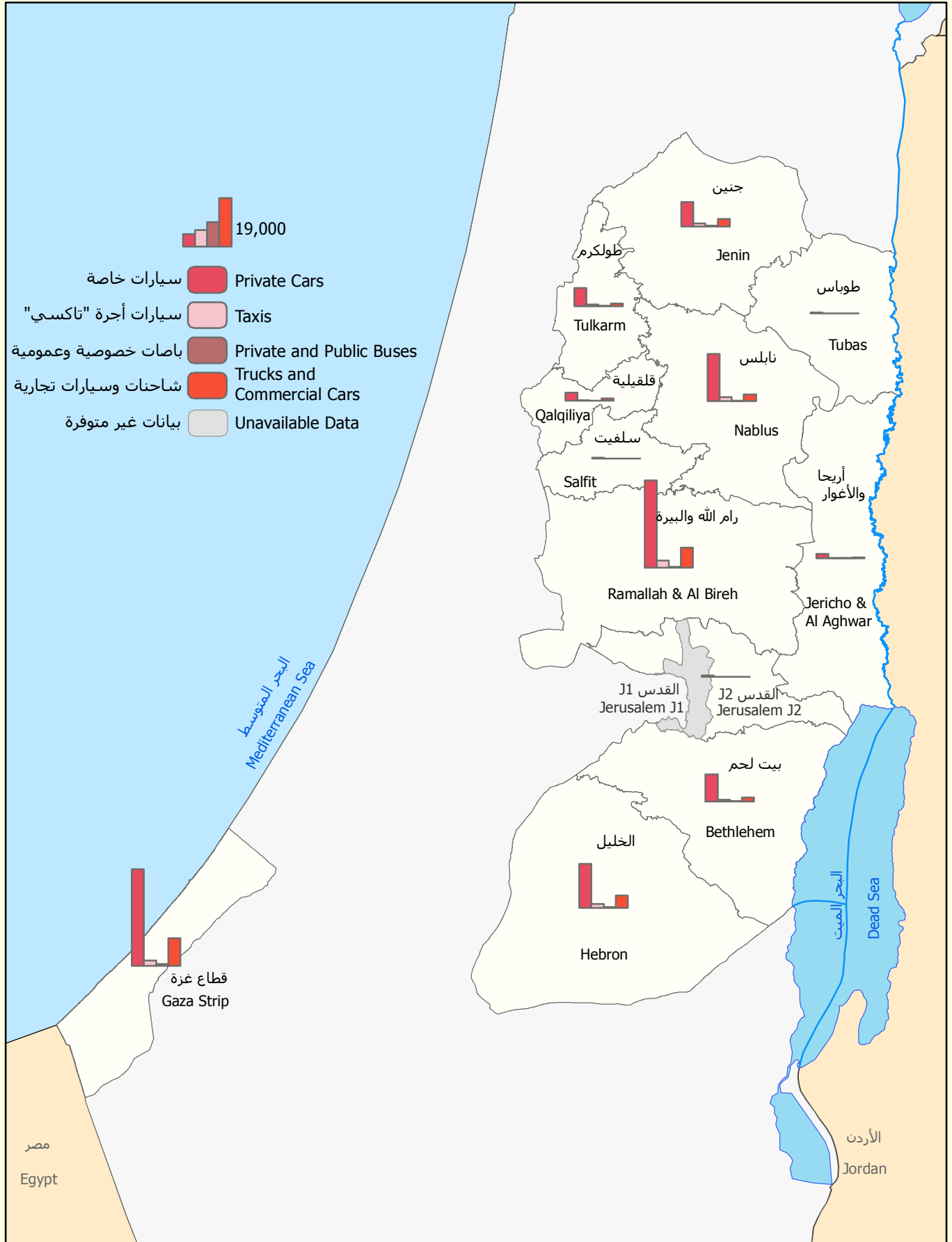


58.4% ( ) 40.8% .(4 ) . 0.8%



عدد المركبات المرخصة في فلسطين حسب أنواع مختارة من المركبات والمحافظة، 2012

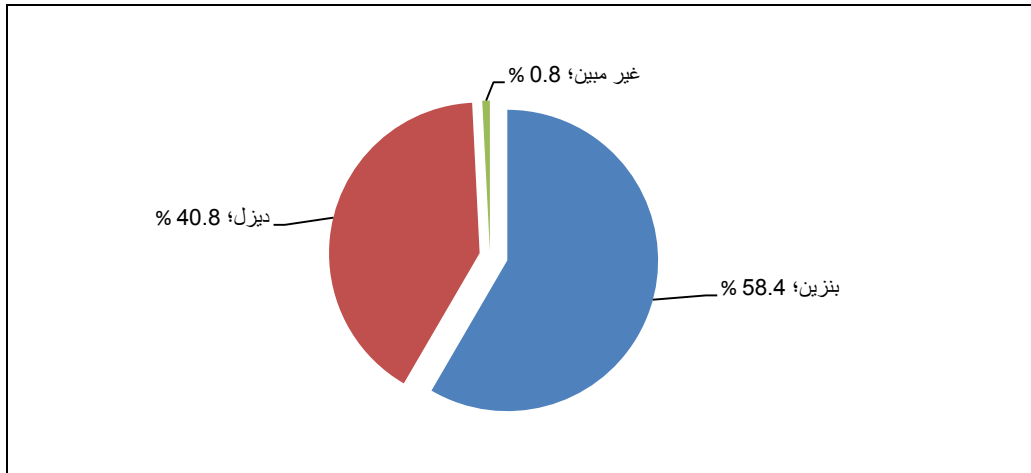
Number of Licensed Road Vehicles in Palestine by Selected Types of Vehicles and Governorate, 2012



المصدر: الجهاز المركزي للإحصاء الفلسطيني، 2013  
 Source: Palestinian Central Bureau of Statistics, 2013



2012

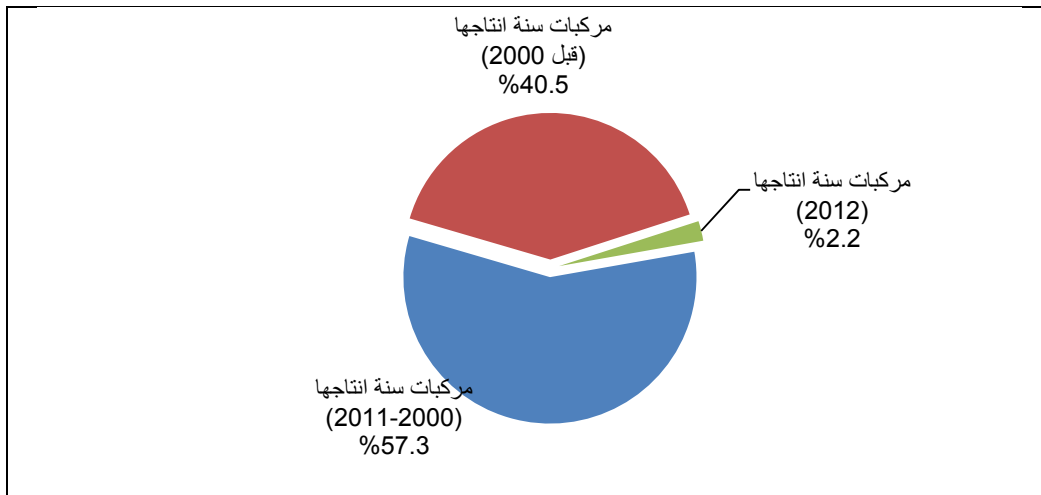


2000 2011 - 2000 2012

57.3% 40.5% 2.2%

(5) )

2012

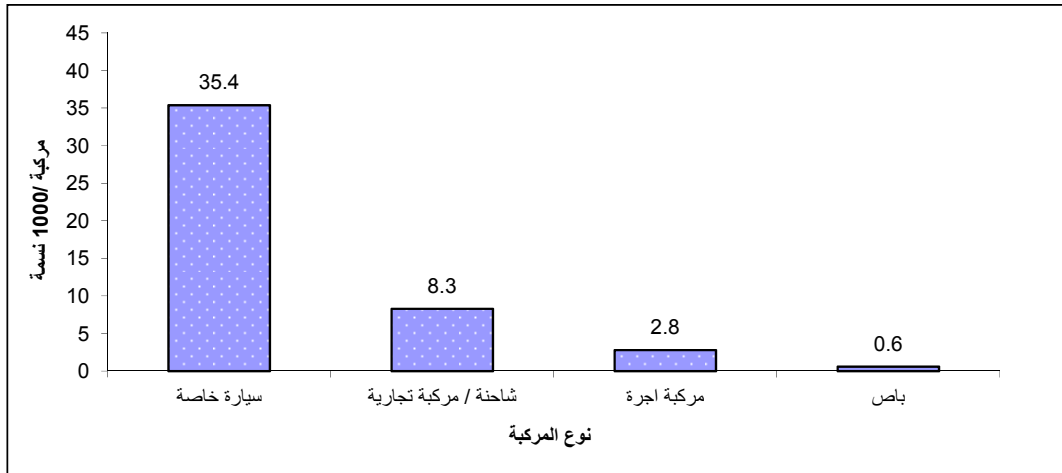


35.4 52.8

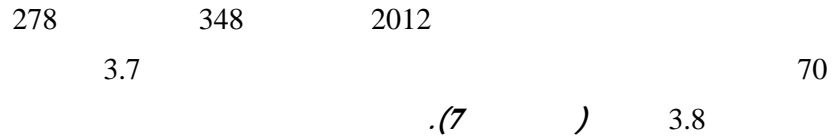
8.3 2.8

(6) ) 0.6

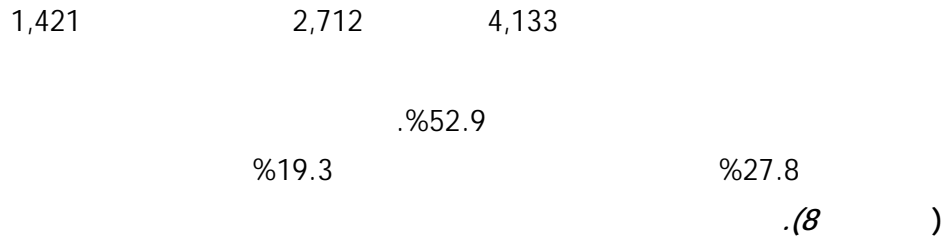
2012



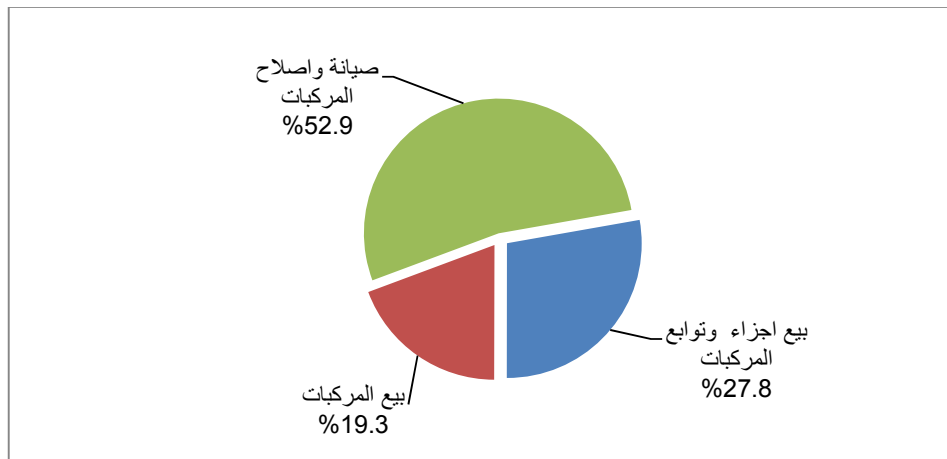
2.2.1



3.2.1



2012



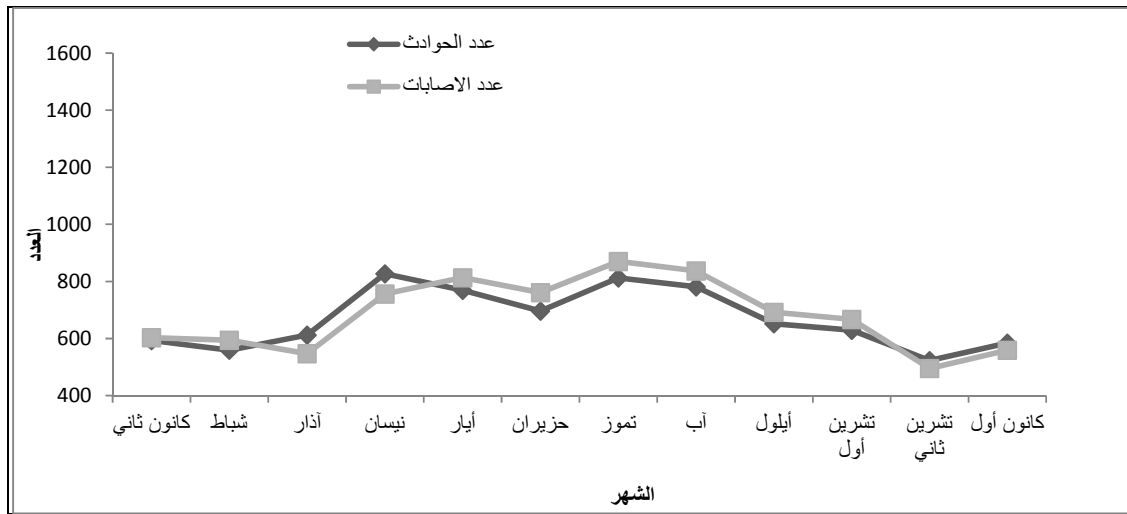
4.2.1

2012  
 25,511  
 %67.7  
 4  
 %31.4  
 15  
 )  
 9  
 10

5.2.1

2012  
 8,037  
 %47.5  
 )  
 11  
 12

2012



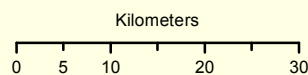
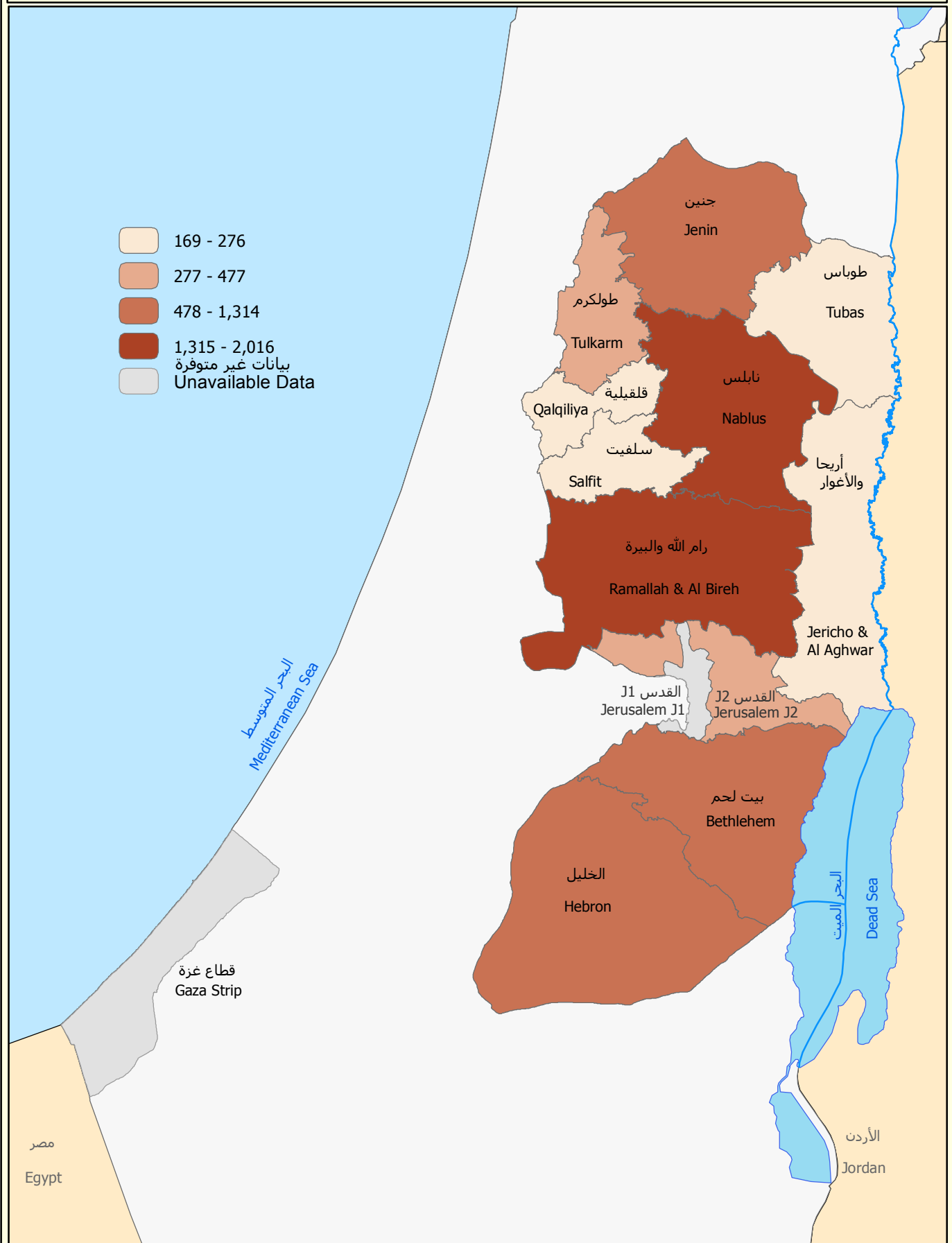






عدد حوادث الطرق المسجلة في فلسطين حسب المحافظة، 2012

Number of Registered Road Traffic Accidents in Palestine by Governorate, 2012

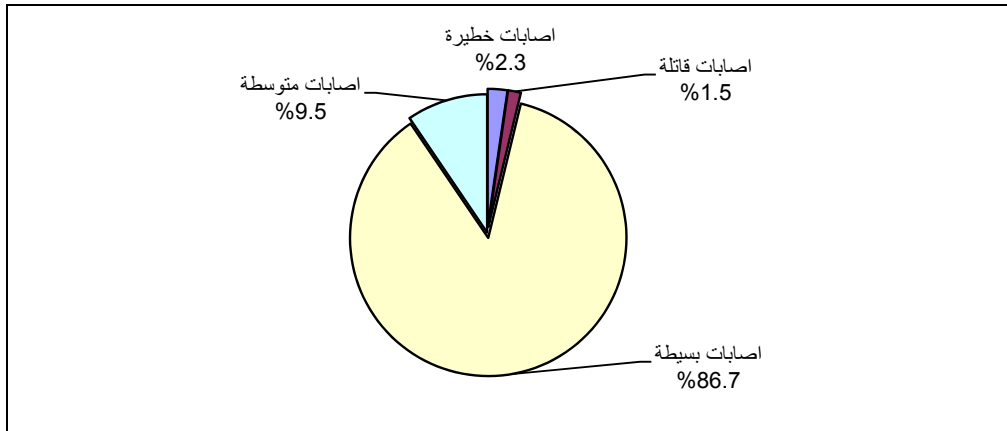


المصدر: الجهاز المركزي للإحصاء الفلسطيني، 2013  
 Source: Palestinian Central Bureau of Statistics, 2013



8,195 2012  
 %9.5 %86.7  
 %1.5 %2.3  
 ) 2011  
 .(13

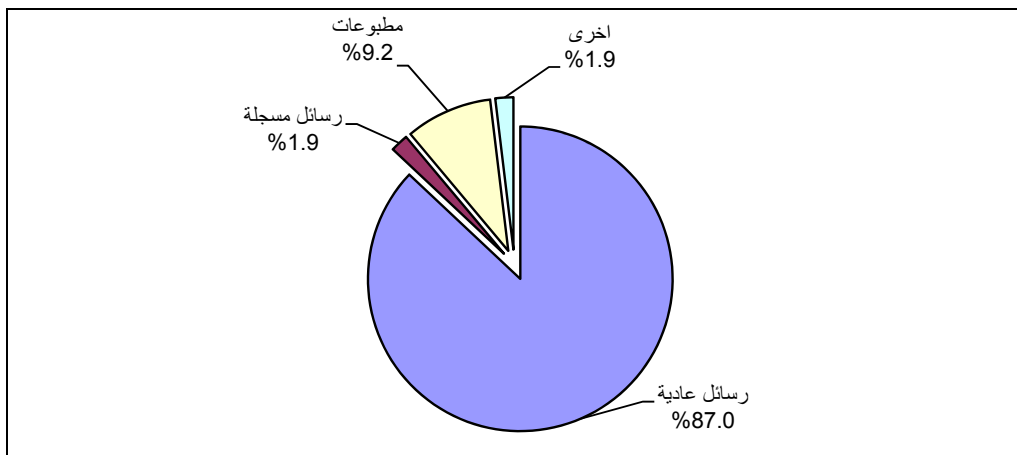
2012

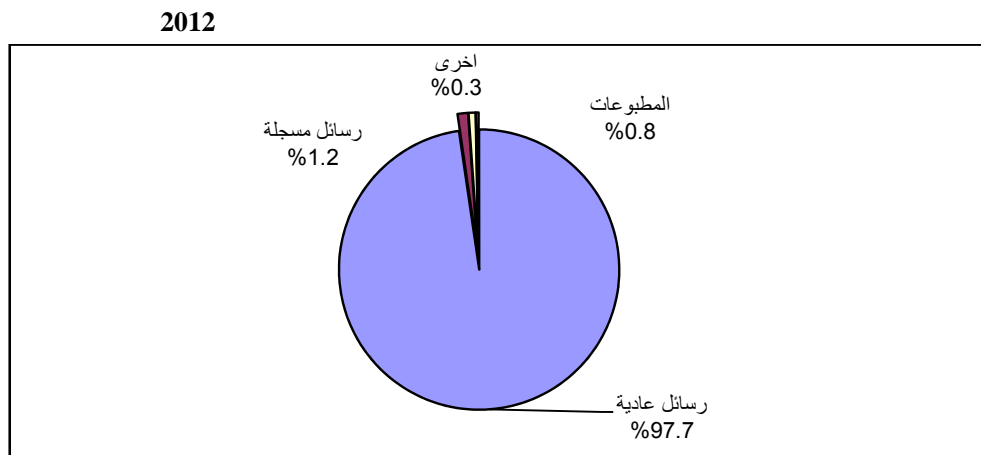
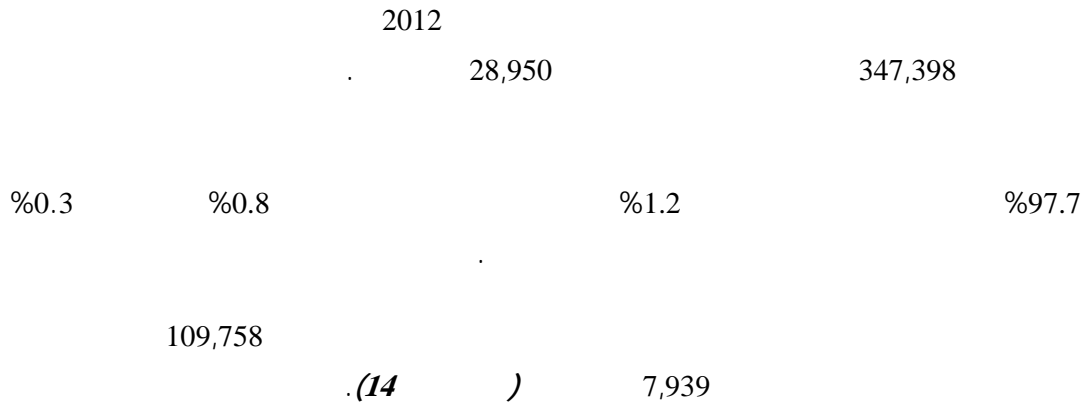


3.1

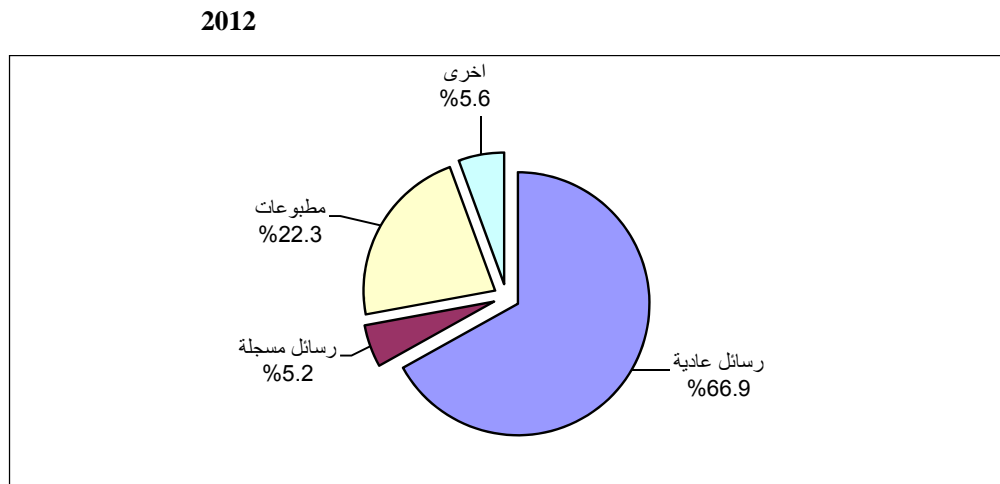
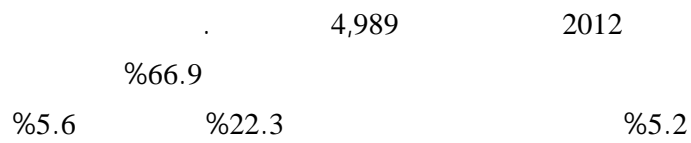
2012 529,077  
 44,090  
 %9.2 %87.0  
 %1.9  
 %1.9  
 74,126  
 ) 20,706  
 .(14

2012



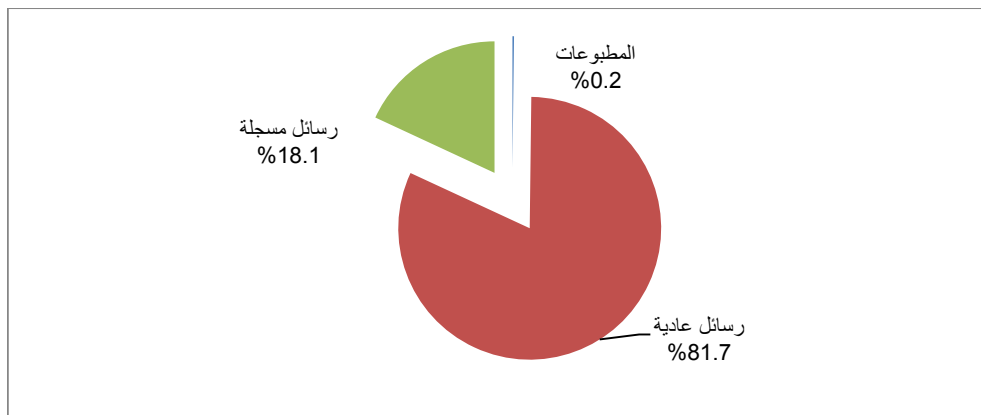


59,863



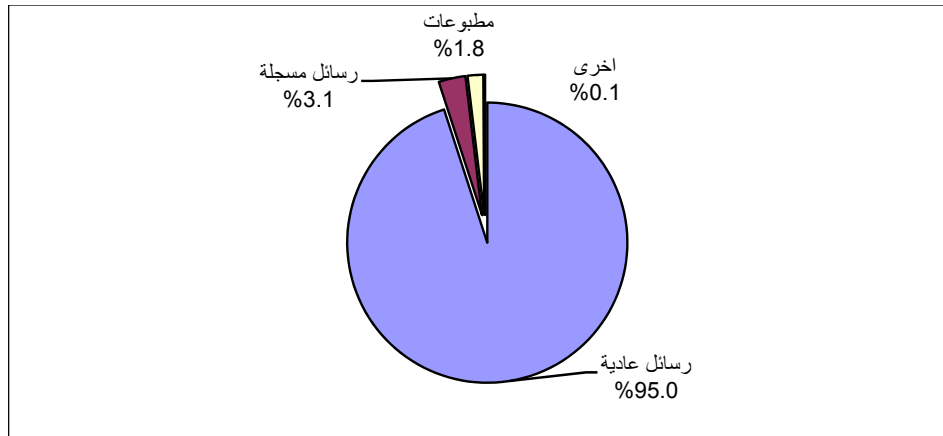
15,858	(15 )	1,264
1,180	22	374
%81.7	98.3	2012
	%0.2	%18.1
		(15 ) 2012

2012



2,951,537	245,961	2012
%1.8	%3.1	%95.0
		%0.1

2012



2,436,635

203,053

2012

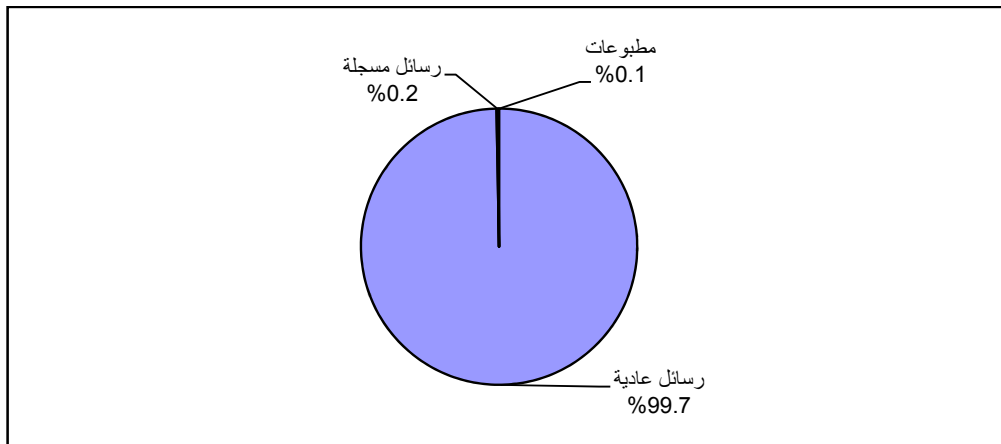
%0.1

%0.2

%99.7

.(16 )

2012



1.3.1

12,860

14,791

2012

211

80

312

1,931

.(17

)

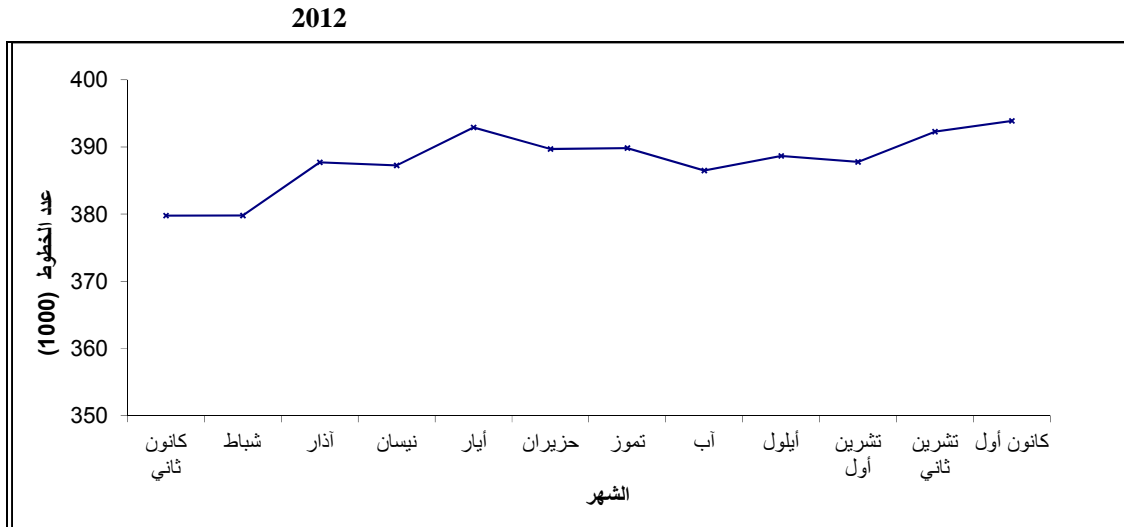
8

13

4.1

2012 393,880 %2.9

( 18 19 )



2012 2,245

2,357

( 20 )

112

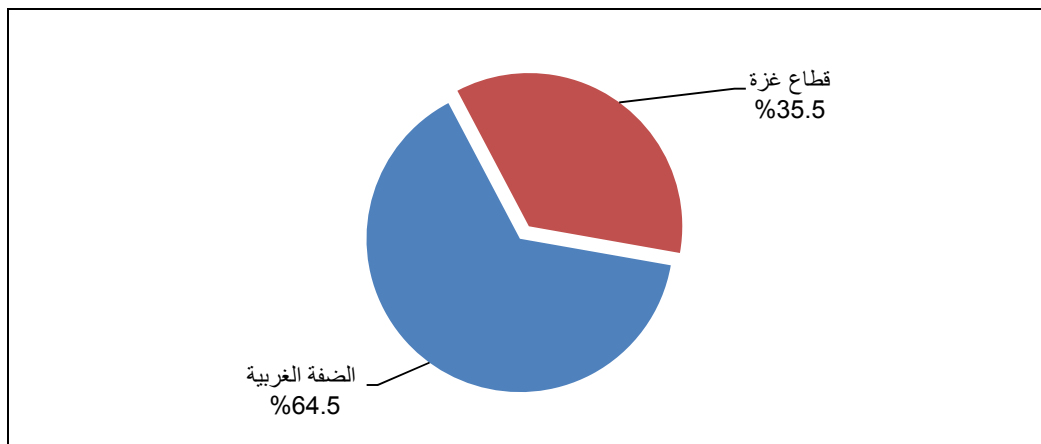
101.3

%35.5

%64.5

2012

2012

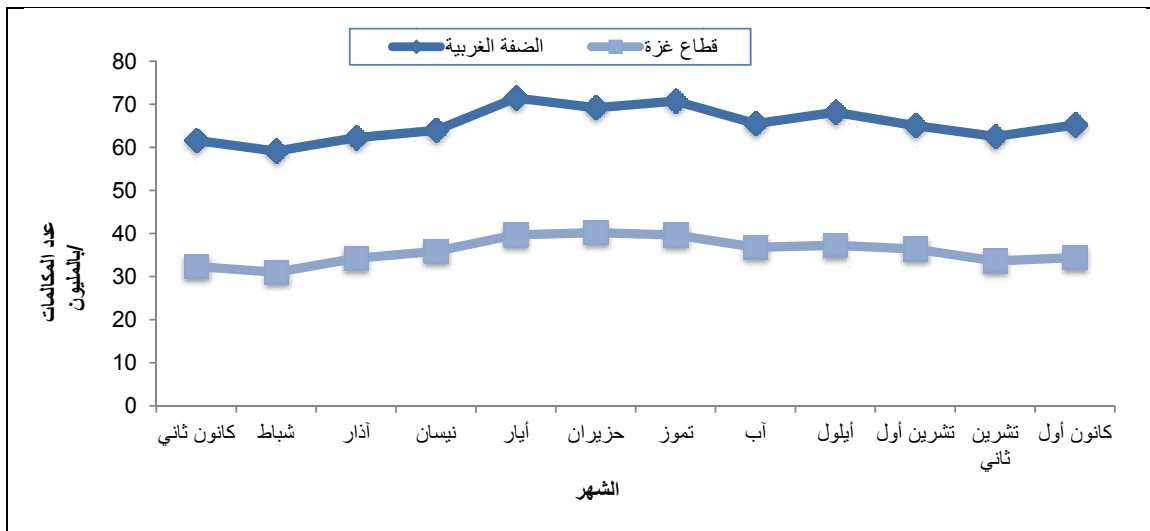


111.2

( 21 ) 2012

%9.1

2012



1.4.1

3.2 2012

( ) . (22)

2.4.1

290

617

907

125,061

185,473 (ADSL)

(23)

) 2012

60,412

1.2

:

.1

.2

.3

2.2

( )

3.2

•

4.2

•

5.2



6.2

•

•

7.2

8.2

•

1967

•

•

.2012

•

2012

2012

•

)

5 4 2

•

.(

:

:2012

3.8551 = /

0.7090 = /

( ):

( ):

( ):

( ):

:

:

.

:

( ) 9

( )

( ) 9

( )

:( )

:

.<sup>3</sup> 250      <sup>3</sup> 250-100   <sup>3</sup> 100-50 (      )<sup>3</sup> 50

.(      ) 9

250

175

2,200

250

(1000 x      /      )

(      ):

:(      )

30

24

:

24

:

:

:

:

( ): :

.( )

( ): :

:

( 2 ) 90

140

. 600

900

. 2,000

20

:

:

24

:

90

140

900

2

( 2 )

600

5

:

-

-

:

2

) 90

140

600

900

(

2

:

3

20

1.5

20-5

:

:( )

( )

.( )



# Tables

جدول 1: العاملون في أنشطة النقل والتخزين والاتصالات في فلسطين\* حسب بعض المؤشرات المختارة، 2008-2012

Table 1: Employed Persons in the Transportation, Storage and Communication Activities in Palestine\* by Selected Indicators, 2008-2012

Year and Region	العاملون بأجر						نسبة العاملين في النقل والتخزين والاتصالات إلى مجموع العاملين	السنة والمنطقة
	Wage employee		معدل ايام العمل الشهرية		معدل ساعات العمل الاسبوعية			
	الاجر الوسيط اليومي (شيكل)**	معدل ايام العمل الشهرية	معدل ايام العمل الشهرية	معدل ساعات العمل الاسبوعية	معدل ساعات العمل الاسبوعية	معدل ساعات العمل الاسبوعية	Percentage of Employed Persons in Transportation, Storage and Communication of Total Employees	
مجموع الأنشطة	نشاط النقل والتخزين والاتصالات	مجموع الأنشطة	نشاط النقل والتخزين والاتصالات	مجموع الأنشطة	نشاط النقل والتخزين والاتصالات			
All Activities	Transportation,Storage and Communication Activity	All Activities	Transportation,Storage and Communication Activity	All Activities	Transportation,Storage and Communication Activity			
<b>Palestine</b>								<b>فلسطين</b>
2008	69.2	65.4	22.9	23.8	41.8	46.9	5.2	2008
2009	70.0	69.2	22.7	23.7	41.7	46.9	5.9	2009
2010	70.0	58.4	22.5	23.8	42.0	47.6	5.9	2010
2011	70.0	57.7	22.7	23.2	41.5	46.9	6.0	2011
2012	70.0	57.7	22.7	22.8	41.3	45.3	6.5	2012
<b>West Bank</b>								<b>الضفة الغربية</b>
2008	73.1	76.9	22.3	23.8	42.2	48.0	5.2	2008
2009	76.9	76.9	22.4	24.0	42.5	46.2	6.0	2009
2010	76.9	90.0	22.2	23.6	43.3	45.9	5.7	2010
2011	76.9	76.9	22.4	24.0	43.1	48.1	5.3	2011
2012	76.9	80.0	22.2	23.0	43.3	47.2	5.6	2012



جدول 1 (تابع): العاملون في أنشطة النقل والتخزين والاتصالات في فلسطين\* حسب بعض المؤشرات المختارة، 2008-2012  
**Table 1 (cont.): Employed Persons in the Transportation, Storage and Communication Activities in Palestine\* by Selected Indicators, 2008-2012**

Year and Region	Wage employee						نسبة العاملين في النقل والتخزين والاتصالات إلى مجموع العاملين	السنة والمنطقة
	الاجر الوسيط اليومي (شيكل**)		معدل ايام العمل الشهرية		معدل ساعات العمل الاسبوعية			
	مجموع القطاعات	قطاع النقل والتخزين والاتصالات	مجموع القطاعات	قطاع النقل والتخزين والاتصالات	مجموع القطاعات	قطاع النقل والتخزين والاتصالات	Percentage of Employed Persons in Transportation, Storage and Communication of Total Employees	
All Activities	Transportation, Storage and Communication Activity	All Activities	Transportation, Storage and Communication Activity	All Activities	Transportation, Storage and Communication Activity			
<b>Gaza Strip</b>								قطاع غزة
2008	57.7	36.4	24.7	23.8	40.8	44.8	5.2	2008
2009	57.7	40.0	23.6	23.0	39.4	48.3	5.7	2009
2010	46.2	30.0	23.4	23.9	38.8	49.7	6.6	2010
2011	50.0	30.0	23.4	22.1	37.9	45.2	7.6	2011
2012	50.0	34.6	23.6	22.5	37.1	43.0	8.4	2012

\*The data exclude employed persons in Israel and Israeli settlements

\* البيانات لا تشمل العاملين في اسرائيل والمستوطنات

\*\*The average exchange rates of NIS per USD during the years, 2008, 2009, 2010, 2011, 2012

\*\* : بلغ معدل سعر صرف الشيكل مقابل الدولار خلال الأعوام ، 2008 ، 2009 ، 2010 ، 2011 ، 2012

Are: 0.279., 0.255, 0.267, 0.279, 0.259 Respectively.

0.279 ، 0.255 ، 0.267 ، 0.279 ، 0.259 على التوالي

Source: Palestinian Central Bureau of Statistics, 2013. Database Labor Force Survey,(2008-2012), Revised Data

المصدر: الجهاز المركزي للإحصاء الفلسطيني، 2013 قاعدة بيانات مسح القوى العاملة (2008-2012)، بيانات منقحة

2012

:2

**Table 2: Licensed Road Vehicles in Palestine by Region and Type of Vehicle, 2012**

Region	المجموع Total	غير ميين Not available	شاحنات وسيارات تجارية Trucks and Commercial Cars	جرارات Road Tractors	جرارات زراعية Agricultural Tractors	مقطورات ونصف مقطورات Trailers and Semi- Trailers	باصات عمومية Public Buses	باصات خصوصية Private Buses	دراجات نارية ودراجات نارية Motorcycles and Moped	سيارات أجرة "تاكسي" Taxis	سيارات خاصة Private Cars	المنطقة
Palestine	217,007	2,790	34,269	824	936	1,824	1,170	1,144	17,080	11,501	145,469	فلسطين
West Bank*	144,121	846	23,178	267	773	1,219	881	783	345	9,341	106,488	*
Gaza Strip	72,886	1,944	11,091	557	163	605	289	361	16,735	2,160	38,981	

(\*) The data excludes those parts of Jerusalem which were annexed by Israel in 1967

(\*) البيانات لا تشمل ذلك الجزء من محافظة القدس الذي ضمته إسرائيل عنوة بعد احتلالها للضفة الغربية عام 1967

Source: Ministry of Transportation, 2012

المصدر: وزارة النقل والمواصلات، 2012

جدول 3: عدد المركبات المسجلة للمرة الأولى في الضفة الغربية\* حسب المحافظة ونوع المركبة، 2012

Table 3: Number of New Registered Road Vehicles in the West Bank\* by Governorate and Type of Vehicle, 2012

Governorate	المجموع Total	مركبات اخرى Other Vehicles	شاحنات وسيارات تجارية Trucks and Commercial Cars	جرارات Road Tractors	جرارات زراعية Agricultural Tractors	مقطورات ونصف مقطورات Trailers and Semi-Trailers	باصات عمومية Public Buses	باصات خصوصية Private Buses	دراجات نارية ودراجات نارية Motorcycles and Moped	سيارات أجرة "تاكسي" Taxis	سيارات خاصة Private Cars	المحافظة
West Bank	13,636	0	1,430	26	62	261	77	162	3	1,723	9,892	الضفة الغربية
Jenin	1,390	0	170	1	20	54	15	16	3	180	931	جنين
Tubas	158	0	12	4	9	2	0	1	0	9	121	طوباس
Tulkarm	644	0	35	1	0	13	6	16	0	161	412	طولكرم
Nablus	2,375	0	107	2	2	28	13	44	0	512	1,667	نابلس
Qalqiliya	386	0	45	1	5	12	0	7	0	61	255	قلقيلية
Salfit	105	0	12	0	2	1	1	0	0	4	85	سلفيت
Ramallah & Al-Bireh	4,778	0	688	10	7	102	22	40	0	416	3,493	رام الله والبيرة
Jericho & Al Aghwar	182	0	17	1	3	3	5	1	0	23	129	أريحا والأغوار
Jerusalem*	124	0	15	0	0	3	0	11	0	1	94	القدس*
Bethlehem	1,040	0	47	3	2	5	0	3	0	85	895	بيت لحم
Hebron	2,454	0	282	3	12	38	15	23	0	271	1,810	الخليل

(\*) The data excludes those parts of Jerusalem which were annexed by Israel in 1967. 1967

(\*)

Source: Ministry of Transportation, 2012

2012

:

## جدول 4: عدد المركبات المرخصة في فلسطين حسب المنطقة ونوع الوقود، 2012

Table 4: Licensed Road Vehicles in Palestine by Region and Type of Fuel, 2012

Region	المجموع Total	غير ميبين Not available	ديزل Diesel	بنزين Gasoline	المنطقة
<b>Palestine</b>	<b>217,007</b>	<b>1,731</b>	<b>88,589</b>	<b>126,687</b>	<b>فلسطين</b>
West Bank	144,121	1,119	64,586	78,416	الضفة الغربية
Gaza Strip	72,886	612	24,003	48,271	قطاع غزة

(\*) The data excludes those parts of Jerusalem which were annexed by Israel in 1967.

(\*) البيانات لا تشمل ذلك الجزء من محافظة القدس الذي ضمته إسرائيل عنوة بعد احتلالها للضفة الغربية عام 1967.

Source: Ministry of Transport, 2012

المصدر: وزارة النقل والمواصلات، 2012

جدول 5: عدد المركبات المرخصة في فلسطين حسب المنطقة وسنة إنتاج المركبة، 2012

Table 5: Licensed Road Vehicles in Palestine by Region and Vehicle Age, 2012

Region	المجموع Total	قبل 2000 Before 2000	Year of Vehicles Age										سنة إنتاج المركبة		المنطقة	
			2000	2001	2002	2003	2004	2005	2006	2007	2008	2009	2010	2011		2012
Palestine	217,007	88,012	6,153	6,953	7,143	4,583	4,525	6,474	13,199	17,079	25,761	14,423	10,270	7,747	4,685	فلسطين
West Bank	144,121	49,965	3,476	4,685	4,620	3,432	3,770	5,572	12,124	12,140	20,086	8,913	6,409	5,628	3,301	الضفة الغربية
Gaza Strip	72,886	38,047	2,677	2,268	2,523	1,151	755	902	1,075	4,939	5,675	5,510	3,861	2,119	1,384	قطاع غزة

(\*) The data excludes those parts of Jerusalem which were annexed by Israel in 1967.

(\*) البيانات لا تشمل ذلك الجزء من محافظة القدس الذي ضمته إسرائيل عنوة بعيد احتلالها للضفة الغربية عام 1967

Source: Ministry of Transport, 2012

المصدر: وزارة النقل والمواصلات، 2012

جدول 6: معدل عدد المركبات المرخصة لكل 1000 نسمة في فلسطين حسب نوع المركبة والمنطقة، 2012

Table 6: Rate of Licensed Motorized Vehicles Per 1000 Capita in Palestine by Type of Vehicle and Region, 2012

Vehicle Type	فلسطين Palestine	قطاع غزة Gaza Strip	الضفة الغربية West Bank	نوع المركبة
Private Cars	35.4	23.3	43.7	سيارات خاصة
Taxis	2.8	1.3	3.8	سيارات أجرة (تاكسي)
Motorcycles and Moped	4.2	10.0	0.1	دراجات نارية ودراجات نارية صغيرة
Buses	0.6	0.4	0.7	باصات
Trailers and Semi-Trailers	0.4	0.4	0.5	مقطورات ونصف مقطورات
Agricultural Tractors	0.2	0.1	0.3	جرارات زراعية
Road Tractors	0.2	0.3	0.1	جرارات
Trucks and Commercial Cars	8.3	6.6	9.5	شاحنات وسيارات تجارية
Other Vehicles	0.7	1.2	0.3	مركبات اخرى
<b>All Types</b>	<b>52.8</b>	<b>43.6</b>	<b>59.2</b>	<b>جميع الانواع</b>

Source: Palestinian Central Bureau of Statistics, 2012 Revised estimates, Based on the Final results population, Housing and Establishment census, 2007

المصدر: الجهاز المركزي للإحصاء الفلسطيني، 2012 بالاستناد إلى تقديرات منقحة لعدد السكان مبنية على نتائج نهائية للتعداد العام للسكان والمساكن- 2007.

جدول 7: عدد مدارس تعليم قيادة السيارات وعدد المدربين وعدد المركبات العاملة في فلسطين حسب المنطقة والمحافظه، 2012

**Table 7: Number of Driving Schools and Number of Trainers and Number of Vehicles in Palestine by Region and Governorate, 2012**

Region / Governorate	عدد المركبات Number of Vehicles	عدد المدربين Number of Trainers	عدد المدارس Number of Driving Schools	المنطقة / المحافظة
<b>Palestine</b>	<b>1,330</b>	<b>1274</b>	<b>348</b>	فلسطين
<b>West Bank</b>	<b>1,119</b>	<b>1051</b>	<b>278</b>	الضفة الغربية
Jenin	119	130	33	جنين
Tubas	29	23	9	طوباس
Tulkarm	73	81	24	طولكرم
Nablus	178	170	41	نابلس
Qalqiliya	47	34	12	قلقيلية
Salfit	34	22	7	سلفيت
Ramallah & Al-Bireh	208	203	45	رام الله والبيرة
Jericho & Al Aghwar	42	36	9	أريحا والأغوار
Jerusalem*	36	27	9	القدس*
Bethlehem	131	125	31	بيت لحم
Hebron	222	200	58	الخليل
<b>Gaza Strip</b>	<b>211</b>	<b>223</b>	<b>70</b>	قطاع غزة
Gaza North	24	25	5	شمال غزة
Gaza	103	110	36	غزة
Deir El-Balah	28	26	10	دير البلح
Khan Yunis	29	40	12	خانيونس
Rafah	27	22	7	رفح

(\* ) The data excludes those parts of Jerusalem which were annexed by Israel in 1967.

1967

(\*)

Source: Ministry of Transportation, 2012

2012

:

جدول 8: عدد الكراجات المرخصة في فلسطين حسب المنطقة ونوع الكراج، 2012

Table 8: Number of Licensed Garages in Palestine by Region and Type of Garage, 2012

Region	المجموع Total	بيع اجزاء وتوايع المركبات ذات المحركات Spare parts Stores	صيانة واصلاح المركبات ذات المحركات Motor vehicles repair workshops	بيع المركبات ذات المحركات Motor vehicles trading shops	المنطقة
<b>Palestine</b>	<b>4,133</b>	<b>1,150</b>	<b>2,186</b>	<b>797</b>	فلسطين
<b>West Bank</b>	<b>2,712</b>	<b>555</b>	<b>1,640</b>	<b>517</b>	الضفة الغربية
Jenin	398	79	207	112	جنين
Tubas	21	3	14	4	طوباس
Tulkarm	387	69	290	28	طولكرم
Nablus	650	129	409	112	نابلس
Qalqiliya	149	22	116	11	قلقيلية
Salfit	28	2	15	11	سلفيت
Ramallah & Al-Bireh	487	109	235	143	رام الله والبيره
Jericho & Al Aghwar	7	1	4	2	أريحا والأغوار
Jerusalem*	36	0	35	1	القدس*
Bethlehem	250	49	153	48	بيت لحم
Hebron	299	92	162	45	الخليل
<b>Gaza Strip</b>	<b>1,421</b>	<b>595</b>	<b>546</b>	<b>280</b>	قطاع غزة

(\*) The data excludes those parts of Jerusalem which were annexed by Israel in 1967.

(\*) البيانات لا تشمل ذلك الجزء من محافظة القدس الذي ضمته إسرائيل عنوة بعيد احتلالها للضفة الغربية عام 1967

Source: Ministry of Transportation, 2012

المصدر: وزارة النقل والمواصلات، 2012



جدول 9: عدد رخص السياقة الصادرة في فلسطين حسب السنة والمنطقة، 1999-2012

**Table 9: Number of Driving Licences Issued in Palestine by Year and Region, 1999-2012**

Year	فلسطين Palestine	قطاع غزة Gaza Strip	الضفة الغربية* West Bank*	السنة
1999	20,434	6,910	13,524	1999
2000	21,597	7,188	14,409	2000
2001	17,088	5,916	11,172	2001
2002	11,338	5,408	5,930	2002
2003	15,575	6,647	8,928	2003
2004	17,838	7,622	10,216	2004
2005	21,133	6,392	14,741	2005
2006	14,147	6,289	7,858	2006
2007	..	..	17,085	2007
2008	..	..	18,442	2008
2009	..	..	25,677	2009
2010	..	..	28,736	2010
2011	..	..	25,857	2011
2012	..	..	25,511	2012

(\*) The data excludes those parts of Jerusalem which were annexed by Israel in 1967.

(\*) البيانات لا تشمل ذلك الجزء من محافظة القدس الذي ضمته إسرائيل عنوة بعيد احتلالها للضفة الغربية عام 1967.

Source: Ministry of Transportation, 2012

المصدر: وزارة النقل والمواصلات، 2012

جدول 10: عدد رخص السياقة الصادرة في الضفة الغربية\* حسب درجة الرخصة والعمر، 2012  
**Table10: Number of Driving Licences Issued in the West Bank\* by Class and Age, 2012**

Licences Class	المجموع	Age							العمر	درجة الرخصة
	Total	65+	64-55	54-45	44-35	34-25	24-19	حتى 18		
1 Agricultural Tractors	128	0	0	3	6	25	56	38	جرار زراعي	1
A+ Motorcycles	60	0	0	1	3	14	36	6	دراجة نارية	A+
B Private and Commercial Cars until 4 ton	17,283	63	148	645	2,196	6,542	7,081	608	خصوصي وتجاري لغاية 4 طن	B
C1 Commercial Cars	8,020	0	4	38	467	1,705	5,727	79	شحن خفيف -تجاري لغايه15طن	C1
E Trailers and Semi-Trailers	0	0	0	0	0	0	0	0	قاطرة / ساندنة	E
D1 Taxis	19	0	2	1	7	8	1	0	تاكسي	D1
D Bus	1	0	1	0	0	0	0	0	باص	D
<b>Total</b>	<b>25,511</b>	<b>63</b>	<b>155</b>	<b>688</b>	<b>2,679</b>	<b>8,294</b>	<b>12,901</b>	<b>731</b>	<b>المجموع</b>	

(\* ) The data excludes those parts of Jerusalem which were annexed by Israel in 1967.

1967

(\*)

Source: Ministry of Transport, 212

2012

:

جدول 11: عدد حوادث الطرق المسجلة وعدد المصابين حسب نوع الإصابة والمنطقة في فلسطين، 2008-2012

Table 11: Number of Registered Road Traffic Accidents and Casualties by Type of Injury in Palestine, 2008 –2012

Indicators	فلسطين Palestine					قطاع غزة Gaza Strip					الضفة الغربية* West Bank*					المؤشر
	2012	2011	2010	2009	2008	2012	2011	2010	2009	2008	2012	2011	2010	2009	2008	
Total of Road Accidents	..	..	..	..	..	..	..	..	..	..	8,037	7,406	5,408	4,671	3,675	مجموع حوادث الطرق
Total Number of Injured Persons:	..	..	..	..	..	..	..	..	..	..	8,195	7,970	7,033	5,859	4,403	اجمالي المصابين:
Slightly Injured	..	..	..	..	..	..	..	..	..	..	7,108	6,854	5,941	4,769	3,482	إصابات بسيطة
Moderate Injured	..	..	..	..	..	..	..	..	..	..	778	847	809	819	631	إصابات متوسطة
Seriously Injured	..	..	..	..	..	..	..	..	..	..	189	154	151	146	192	إصابات خطيرة
Fatally Injured	..	..	..	..	..	..	..	..	..	..	120	115	132	125	98	وفاة

(\*) The data excludes those parts of Jerusalem which were annexed by Israel in 1967.

(\*) البيانات لا تشمل ذلك الجزء من محافظة القدس الذي ضمته إسرائيل عنوة بعد احتلالها للضفة الغربية عام 1967.

Source: General Commisariat of the Palestinian Police, 2012

المصدر: المديرية العامة للشرطة الفلسطينية، 2012

## جدول 12: عدد حوادث الطرق المسجلة في الضفة الغربية حسب المحافظة والشهر، 2012

Table 12: Number of Registered Road Traffic Accidents in the West Bank by Governorate and Month, 2012

Governorate	حوادث تسببت بأضرار مادية فقط Including accidents caused material damage only	المجموع Total	كانون أول December	تشرين ثاني November	تشرين أول October	أيلول September	أب August	تموز July	حزيران June	أيار May	نيسان April	أذار March	شباط February	كانون ثاني January	المحافظة
West Bank	3,818	8,037	584	523	629	652	781	812	696	769	827	612	559	593	الضفة الغربية
Jenin	257	853	64	52	67	78	78	87	70	89	83	74	56	55	جنين
Tubas	63	157	7	8	9	17	20	12	18	13	16	11	15	11	طوباس
Tulkarm	150	477	27	34	31	33	58	44	40	43	47	33	22	21	طولكرم
Nablus	879	1,723	113	96	122	123	167	204	147	163	183	136	131	138	نابلس
Qalqiliya	92	249	18	17	13	14	37	27	36	23	29	12	4	19	قلقيلية
Salfit	47	183	16	13	13	20	17	19	10	13	16	15	18	13	سلفيت
Ramallah & Al-Bireh	1,242	1,869	155	135	157	156	172	147	167	184	187	142	129	138	رام الله والبيرة
Jericho & Al Aghwar	100	231	14	21	26	18	15	24	20	22	31	10	15	15	أريحا والأغوار
Jerusalem*	143	319	24	16	23	31	35	32	31	34	32	19	24	18	القدس*
Bethlehem	414	827	64	46	56	76	83	95	64	79	70	62	63	69	بيت لحم
Hebron	431	1,193	82	85	112	86	99	121	93	106	133	98	82	96	الخليل

(\*) The data excludes those parts of Jerusalem which were annexed by Israel in 1967.

(\*) البيانات لا تشمل ذلك الجزء من محافظة القدس الذي ضمته إسرائيل عنوة بعيد احتلالها للضفة الغربية عام 1967

Source: General Commisariat of the Palestinian Police, 2012

المصدر: المديرية العامة للشرطة الفلسطينية، 2012

جدول 13: عدد المصابين في حوادث الطرق المسجلة في الضفة الغربية حسب المحافظة ونوع الإصابة، 2012

**Table 13: Number of Casualties in Registered Road Traffic Accidents in the West Bank by Governorate and Type of Injury, 2012**

Governorate	المجموع Total	اصابات قاتلة Fatally Injured	اصابات خطيرة Serriously Injured	اصابات متوسطة Moderately Injured	اصابات بسيطة Slightly Injured	المحافظة
<b>West Bank</b>	<b>8,195</b>	<b>120</b>	<b>189</b>	<b>778</b>	<b>7,108</b>	الضفة الغربية
Jenin	1,160	18	18	63	1,061	جنين
Tubas	157	1	4	8	144	طوباس
Tulkarm	578	13	13	65	487	طولكرم
Nablus	1,732	18	29	151	1,534	نابلس
Qalqiliya	312	1	4	35	272	قلقيلية
Salfit	235	4	1	13	217	سلفيت
Ramallah & Al-Bireh	1,182	15	18	93	1,056	رام الله والبيرة
Jericho and Al Aghwar	289	6	4	28	251	أريحا والأغوار
Jerusalem*	422	11	24	62	325	القدس*
Bethlehem	751	4	15	83	649	بيت لحم
Hebron	1,377	29	59	177	1,112	الخليل

(\*) The data excludes those parts of Jerusalem which were annexed by Israel in 1967.

(\*) البيانات لا تشمل ذلك الجزء من محافظة القدس الذي ضمته إسرائيل عنوة بعد احتلالها للضفة الغربية عام 1967

Source: General Commisariat of the Palestinian Police, 2012

المصدر: المديرية العامة للشرطة الفلسطينية، 2012

جدول 14: البريد الدولي الصادر والوارد من وإلى الضفة الغربية\* حسب الشهر ونوع البريد، 2012

Table14: International Dispatched and Receipt Mail From and to the West Bank\* by Month and Type of Mail, 2012

Month	مطبوعات		رسائل مسجلة		رسائل عادية		بريد سريع**		الشهر
	Printed Matters		Registered Letters		Regular Letters		Express Mail**		
	وارد	صادر	وارد	صادر	وارد	صادر	وارد	صادر	
	Receipt	Dispatched	Receipt	Dispatched	Receipt	Dispatched	Receipt	Dispatched	
January	2,857	103	633	676	54,730	7,774	130	-	كانون ثاني
February	7,317	515	821	353	38,703	7,911	163	-	شباط
March	2,893	163	833	635	50,054	10,114	107	-	آذار
April	3,384	177	775	276	41,949	8,097	107	-	نيسان
May	5,610	291	731	204	35,923	9,043	160	-	أيار
June	7,243	422	663	941	44,630	7,852	132	-	حزيران
July	6,237	390	356	74	15,826	10,505	103	-	تموز
August	2,567	69	817	252	20,744	21,303	71	-	آب
September	2,159	93	270	140	20,621	109,412	70	-	أيلول
October	2,458	69	400	51	17,263	7,736	98	-	تشرين أول
November	3,681	240	2,436	540	51,774	98,989	94	-	تشرين ثاني
December	2,731	220	1,656	133	68,619	40,768	123	-	كانون أول
<b>Total of year</b>	<b>49,137</b>	<b>2,752</b>	<b>10,391</b>	<b>4,275</b>	<b>460,836</b>	<b>339,504</b>	<b>1,358</b>	-	مجموع السنة

جدول 14 (تابع): البريد الدولي الصادر والوارد من وإلى الضفة الغربية\* حسب الشهر ونوع البريد، 2012

Table 14 (cont.): International Dispatched and Receipt Mail From and to the West Bank\* by Month and Type of Mail, 2012

Month	المجموع Total		رزم صغيرة Small Packets		برقيات Telegrams		طرود Parcels		الشهر
	وارد Receipt	صادر Dispatched	وارد Receipt	صادر Dispatched	وارد Receipt	صادر Dispatched	وارد Receipt	صادر Dispatched	
	January	59,341	8,587	685	17	0	0	306	
February	47,756	8,867	367	67	0	0	385	21	شباط
March	54,466	10,934	331	9	0	0	248	13	آذار
April	46,774	8,694	293	121	0	0	266	23	نيسان
May	42,848	9,567	252	0	0	0	172	29	أيار
June	53,314	9,247	295	9	0	0	351	23	حزيران
July	22,990	10,989	308	2	0	0	160	18	تموز
August	24,848	21,643	401	2	0	0	248	17	آب
September	23,888	109,758	573	69	0	0	195	44	أيلول
October	20,705	7,939	372	70	0	0	114	13	تشرين أول
November	59,379	99,904	928	107	0	0	466	28	تشرين ثاني
December	74,126	41,269	730	132	0	0	267	16	كانون أول
<b>Total of year</b>	<b>529,077</b>	<b>347,398</b>	<b>5,535</b>	<b>605</b>	<b>0</b>	<b>0</b>	<b>3,178</b>	<b>262</b>	<b>مجموع السنة</b>

(\*) The data excluding those parts of Jerusalem, which were annexed by Israel in 1967

(\*) البيانات لا تشمل ذلك الجزء من محافظة القدس والذي ضمته إسرائيل عنوة بعيد احتلالها للضفة الغربية عام 1967

(\*\*) The data does not include Private Companies for Transportation of Express Mail.

(\*\*) البيانات لا تشمل الشركات الخاصة لنقل البريد السريع.

Source: Ministry of Telecom & Information Technology 2012

المصدر: وزارة الاتصالات وتكنولوجيا المعلومات، 2012

جدول 15: البريد الدولي الصادر والوارد من وإلى قطاع غزة حسب الشهر ونوع البريد، 2012

Table 15: International Dispatched and Receipt Mail From and to Gaza Strip by Month and Type of Mail, 2012

Month	مطبوعات Printed Matters		رسائل مسجلة Registered Letters		رسائل عادية Regular Letters		بريد سريع* Express Mail*		الشهر
	وارد Receipt	صادر Dispatched	وارد Receipt	صادر Dispatched	وارد Receipt	صادر Dispatched	وارد Receipt	صادر Dispatched	
January	1,378	0	75	30	3,271	34	251	-	كانون ثاني
February	769	1	489	12	14,337	45	0	-	شباط
March	1,144	0	729	13	2,855	361	1	-	آذار
April	988	0	279	5	2,163	115	0	-	نيسان
May	136	0	36	10	1,076	31	1	-	أيار
June	348	0	45	19	1,942	50	0	-	حزيران
July	1,825	1	415	12	2,635	39	0	-	تموز
August	1,274	0	245	1	1,770	21	0	-	آب
September	899	0	140	84	2,006	75	0	-	أيلول
October	844	0	204	9	2,902	86	2	-	تشرين أول
November	2,083	0	270	1	1,677	45	0	-	تشرين ثاني
December	1,647	0	202	18	3,415	62	0	-	كانون أول
<b>Total of year</b>	<b>13,335</b>	<b>2</b>	<b>3,129</b>	<b>214</b>	<b>40,049</b>	<b>964</b>	<b>255</b>	<b>-</b>	<b>مجموع السنة</b>

\* The data does not include Private Companies for Transportation of Express Mail.

(\*) البيانات لا تشمل الشركات الخاصة لنقل البريد السريع.



جدول 15 (تابع): البريد الدولي الصادر والوارد من وإلى قطاع غزة حسب الشهر ونوع البريد، 2012

Table 15 (cont.): International Dispatched and Receipt Mail From and to Gaza Strip by Month and Type of Mail, 2012

Month	المجموع Total		رزم صغيرة Small Packets		برقيات Telegrams		طرود Parcels		الشهر
	وارد Receipt	صادر Dispatched	وارد Receipt	صادر Dispatched	وارد Receipt	صادر Dispatched	وارد Receipt	صادر Dispatched	
January	5,354	64	90	0	0	0	289	0	كانون ثاني
February	15,858	58	45	0	0	0	218	0	شباط
March	5,008	374	45	0	0	0	234	0	آذار
April	3,657	120	36	0	0	0	191	0	نيسان
May	1,264	41	1	0	0	0	14	0	أيار
June	2,597	69	112	0	0	0	150	0	حزيران
July	2,597	52	210	0	0	0	252	0	تموز
August	3,591	22	11	0	0	0	291	0	آب
September	3,285	159	40	0	0	0	200	0	أيلول
October	4,166	95	58	0	0	0	156	0	تشرين أول
November	4,255	46	32	0	0	0	193	0	تشرين ثاني
December	5,491	80	40	0	0	0	187	0	كانون أول
<b>Total of year</b>	<b>59,863</b>	<b>1,180</b>	<b>720</b>	<b>0</b>	<b>0</b>	<b>0</b>	<b>2,375</b>	<b>0</b>	<b>مجموع السنة</b>

Source: Ministry of Telecom &amp; Information Technology 2012

المصدر: وزارة الاتصالات وتكنولوجيا المعلومات، 2012

جدول 16: البريد الداخلي في فلسطين حسب الشهر ونوع البريد، 2012

Table 16: Domestic Mail in Palestine by Month and Type of Mail, 2012

Month	قطاع غزة Gaza Strip							الضفة الغربية West Bank							الشهر
	المجموع Total	رزم صغيرة Small Packets	برقيات Telegrams	طرود Parcels	مطبوعات Printed Matters	رسائل مسجلة Registered Letters	رسائل عادية Regular Letters	المجموع Total	رزم صغيرة Small Packets	برقيات Telegrams	طرود Parcels	مطبوعات Printed Matters	رسائل مسجلة Registered Letters	رسائل عادية Regular Letters	
January	176,264	0	0	0	0	447	175,817	249,663	106	10	13	1,659	10,034	237,841	كانون ثاني
February	200,455	0	0	2	15	126	200,312	202,735	49	13	10	4,728	9,008	188,927	شباط
March	301,460	0	0	0	6	67	301,387	264,725	128	9	3	4,382	6,612	253,591	آذار
April	206,689	0	0	1	1	405	206,282	233,386	334	3	33	14,879	7,585	210,552	نيسان
May	108,932	0	0	0	15	880	108,037	264,145	78	14	18	7,142	11,090	245,803	أيار
June	214,313	5	0	3	451	272	213,582	204,062	66	21	9	2,902	6,410	194,654	حزيران
July	229,728	5	0	0	58	565	229,100	219,274	108	15	22	3,339	5,393	210,397	تموز
August	205,969	4	0	0	38	8	205,919	228,633	109	23	19	2,321	5,259	220,902	آب
September	226,265	0	0	0	71	1,180	225,014	275,116	133	24	18	2,415	6,927	265,599	أيلول
October	193,912	0	0	0	31	1,641	192,240	183,610	135	30	32	2,016	4,774	176,623	تشرين أول
November	187,211	0	0	0	20	1	187,190	380,034	203	144	51	2,690	9,490	367,456	تشرين ثاني
December	185,437	0	0	0	100	551	184,786	246,154	0	22	89	3,990	8,493	233,560	كانون أول
<b>Total of year</b>	<b>2,436,635</b>	<b>14</b>	<b>0</b>	<b>6</b>	<b>806</b>	<b>6,143</b>	<b>2,429,666</b>	<b>2,951,537</b>	<b>1,449</b>	<b>328</b>	<b>317</b>	<b>52,463</b>	<b>91,075</b>	<b>2,805,905</b>	مجموع السنة

(\*) The data excluding those parts of Jerusalem, which were annexed by Israel in 1967

(\*) البيانات لا تشمل ذلك الجزء من محافظة القدس الذي ضمته إسرائيل عنوة بعيد احتلالها للضفة الغربية عام 1967

Source: Ministry of Telecom &amp; Information Technology 2012

المصدر: وزارة الاتصالات وتكنولوجيا المعلومات، 2012

جدول 17: عدد مراكز الخدمة البريدية وصناديق البريد في فلسطين حسب المنطقة والمحافظه، 2012

Table 17: Number of Mail Service Centers and P.O. Boxes in Palestine by Region and Governorate, 2012

Region and Governorate	صناديق البريد Post Boxes	المجموع Total	مراكز الخدمة البريدية Mail Service Centers		المنطقة والمحافظه
			شعبة بريد Mail Service Division	مكتب بريد Mail Service Office	
<b>Palestine</b>	<b>14,791</b>	<b>312</b>	<b>219</b>	<b>93</b>	فلسطين
<b>West Bank</b>	<b>12,860</b>	<b>291</b>	<b>211</b>	<b>80</b>	الضفة الغربية
Jenin	450	43	35	8	جنين
Tubas	225	14	9	5	طوباس
Tulkarm	900	31	19	12	طولكرم
Nablus	1,950	48	43	5	نابلس
Qalqiliya	435	24	17	7	قلقيلية
Salfit.	150	17	13	4	سلفيت
Ramallah & Al-Bireh	4,175	56	43	13	رام الله والبيرة
Jericho & Al Aghwar	360	3	1	2	أريحا والأغوار
Jerusalem*	225	9	6	3	القدس*
Bethlehem	2,130	16	10	6	بيت لحم
Hebron	1,860	30	15	15	الخليل
<b>Gaza Strip</b>	<b>1,931</b>	<b>21</b>	<b>8</b>	<b>13</b>	قطاع غزة
North Gaza	75	5	2	3	شمال غزة
Gaza	1500	5	2	3	غزة
Deir Al-Balah	56	3	1	2	دير البلح
Khan Yunis	225	3	1	2	خان يونس
Rafah	75	5	2	3	رفح

(\*) The data excluding those parts of Jerusalem, which were annexed by Israel in 1967

(\*) البيانات لا تشمل ذلك الجزء من محافظة القدس والذي ضمته إسرائيل عنوة بعد احتلالها للضفة الغربية عام 1967

Source: Ministry of Telecom. &amp; Information Technology 2012

المصدر: وزارة الاتصالات وتكنولوجيا المعلومات، 2012

جدول 18: عدد خطوط الهاتف الرئيسية في فلسطين حسب السنة والمنطقة، 1999-2012

Table18: Number of Main Telephone Lines in Palestine by Year and Region, 1999-2012

Year	فلسطين* Palestine*	قطاع غزة Gaza Strip	الضفة الغربية* West Bank*	السنة
1999	222,198	68,385	153,813	1999
2000	272,211	84,187	188,024	2000
2001	255,218	78,351	176,867	2001
2002	241,894	77,124	164,770	2002
2003	243,494	81,240	162,254	2003
2004	271,458	90,699	180,759	2004
2005	337,025	111,937	225,088	2005
2006	321,999	104,426	217,573	2006
2007	348,788	105,469	243,319	2007
2008	354,804	103,543	257,821	2008
2009	368,216	109,525	258,691	2009
2010	360,402	115,868	244,534	2010
2011	382,700	130,300	252,400	2011
2012	393,880	136,059	257,821	2012

(\*)The data excluding those parts of Jerusalem, which were annexed by Israel in 1967

(\*) البيانات لا تشمل ذلك الجزء من محافظة القدس والذي ضمته إسرائيل عنوة بعد احتلالها للضفة الغربية عام 1967

Source: Palestine Telecommunications Company, 2012

المصدر: شركة الاتصالات الفلسطينية، 2012

## جدول 19: عدد خطوط الهاتف الرئيسية في فلسطين حسب الشهر والمنطقة ونوع الاشتراك، 2012

Table 19: Number of Main Telephone Lines in Palestine by Month, Region and Type of Subscription, 2012

Month	المجموع الكلي			حكومي			تجاري			منزلي			الشهر
	المجموع	قطاع غزة	الضفة الغربية*	المجموع	قطاع غزة	الضفة الغربية*	المجموع	قطاع غزة	الضفة الغربية*	المجموع	قطاع غزة	الضفة الغربية*	
	Total	Gaza Strip	West Bank*	Total	Gaza Strip	West Bank*	Total	Gaza Strip	West Bank*	Total	Gaza Strip	West Bank*	
January	379,770	130,717	249,053	8,048	2,298	5,750	55,513	12,751	42,762	316,209	115,668	200,541	كانون ثاني
February	379,772	130,423	249,349	8,804	2,571	6,233	56,611	13,044	43,567	314,357	114,808	199,549	شباط
March	387,708	130,353	257,355	9,263	2,545	6,718	57,854	13,142	44,712	320,591	114,666	205,925	آذار
April	387,245	130,353	256,892	7,947	1,751	6,196	56,525	12,244	44,281	322,773	116,358	206,415	نيسان
May	392,908	136,217	256,691	7,869	1,718	6,151	56,184	13,225	42,959	328,855	121,274	207,581	أيار
June	389,694	135,098	254,596	7,841	1,722	6,119	53,468	12,729	40,739	328,385	120,647	207,738	حزيران
July	389,836	134,578	255,258	7,825	1,716	6,109	53,322	12,685	40,637	328,689	120,177	208,512	تموز
August	386,485	133,313	253,172	7,822	1,710	6,112	53,013	12,638	40,375	325,650	118,965	206,685	أب
September	388,660	133,685	254,975	7,813	1,709	6,104	52,762	12,558	40,204	328,085	119,418	208,667	أيلول
October	387,767	133,077	254,690	7,844	1,727	6,117	52,960	12,578	40,382	326,963	118,772	208,191	تشرين أول
November	392,273	134,326	257,947	7,843	1,732	6,111	53,023	12,565	40,458	331,407	120,029	211,378	تشرين ثاني
December	393,880	136,059	257,821	7,856	1,740	6,116	52,812	12,469	40,343	333,212	121,850	211,362	كانون أول

(\*)The data excluding those parts of Jerusalem, which were annexed by Israel in 1967 (\*) البيانات لا تشمل ذلك الجزء من محافظة القدس والذي ضمته إسرائيل عنوة بعيد احتلالها للضفة الغربية عام 1967

Source: Palestine Telecommunications Company, 2012

المصدر: شركة الاتصالات الفلسطينية، 2012

جدول 20: عدد خطوط الهاتف العمومي في فلسطين حسب الشهر والمنطقة، 2012

Table 20: Number of Public Phones in Palestine by Month and Region , 2012

Month	فلسطين* Palestine*	عدد خطوط الهاتف العمومي Number of Public phone		الشهر
		قطاع غزة Gaza Strip	الضفة الغربية* West Bank*	
January	2,375	119	2,256	كانون ثاني
February	2,373	118	2,255	شباط
March	2,371	118	2,253	آذار
April	2,371	118	2,253	نيسان
May	2,369	120	2,249	أيار
June	2,367	120	2,247	حزيران
July	2,364	120	2,244	تموز
August	2,363	120	2,243	أب
September	2,363	120	2,243	أيلول
October	2,355	112	2,243	تشرين أول
November	2,355	112	2,243	تشرين ثاني
December	2,357	112	2,245	كانون أول

(\*)The data excluding those parts of Jerusalem, which were annexed by Israel in 1967

(\*) البيانات لا تشمل ذلك الجزء من محافظة القدس والذي ضمته إسرائيل عنوة بعيد احتلالها للضفة الغربية عام 1967

Source: Palestine Telecommunications Company, 2012

المصدر: شركة الاتصالات الفلسطينية، 2012

جدول 21: عدد المكالمات الهاتفية المحلية في فلسطين حسب الشهر والمنطقة، 2012

Table 21: Number of Telephone Local Calls in Palestine by Month and Region, 2012

Month	المجموع Total	Local Calls		المكالمات محلية الشهر
		قطاع غزة Gaza Strip	الضفة الغربية West Bank	
January	93,907,878	32,304,561	61,603,317	كانون ثاني
February	90,106,270	30,999,840	59,106,430	شباط
March	96,481,917	34,235,226	62,246,691	آذار
April	99,801,293	35,855,720	63,945,573	نيسان
May	111,157,099	39,681,181	71,475,918	أيار
June	109,385,874	40,189,337	69,196,537	حزيران
July	110,364,561	39,650,034	70,714,527	تموز
August	102,280,913	36,800,628	65,480,285	أب
September	105,400,447	37,244,772	68,155,675	أيلول
October	101,418,816	36,385,298	65,033,518	تشرين أول
November	96,137,000	33,624,182	62,512,818	تشرين ثاني
December	99,631,521	34,410,150	65,221,371	كانون أول
<b>Total of Year</b>	<b>1,216,073,589</b>	<b>431,380,929</b>	<b>784,692,660</b>	<b>مجموع السنة</b>
<b>Monthly Average</b>	<b>101,339,466</b>	<b>35,948,411</b>	<b>65,391,055</b>	<b>المعدل الشهري</b>

Source: Palestine Telecommunications Company, 2012

2012

:

جدول 22: عدد الاشتراكات في الهاتف الخليوي الفلسطيني في فلسطين حسب السنة والمنطقة، 2012

Table 22: Number of Palestinian Cellular Phone Subscriptions in Palestine by Year and Region, 2012

Year	فلسطين Palestine	قطاع غزة Gaza Strip	الضفة الغربية West Bank	السنة
2001	175,941	..	..	2001
2002	251,602	122,866	128,736	2002
2003	264,091	..	..	2003
2004	436,628	256,788	179,840	2004
2005	567,584	272,440	295,144	2005
2006	821,800	..	..	2006
2007	1,021,481	..	..	2007
2008*	1,314,406	..	..	*2008
2009*	1,800,000	..	..	*2009
2010	2,603,582	..	..	2010
2011	2,884,964	..	..	2011
2012	3,190,233	..	..	2012

Source: Palestine Cellular Communication, (LTD), 2012 and Al Wataniya mobile.

المصدر: شركة الاتصالات الخليوية الفلسطينية، (م خ م)، 2012 وشركة الوطنية موبايل.

(\* ) The data not Include data of Al Wataniya mobile

(\* ) البيانات لا تشمل بيانات الشركة الوطنية موبايل



جدول 23: عدد المشتركين وعدد خطوط الاتصال السريع في خدمة الإنترنت في فلسطين حسب الشهر والمنطقة، 2012

Table 23: Number of Subscribers and Number of (ADSL) Lines in Internet Service in Palestine by Month and Region, 2012

Month	المجموع Total			عدد خطوط الاتصال السريع (ADSL) Number of (ADSL) Lines			عدد المشتركين حسب الاتصال المجاني (SFI) Number of Subscribers by Service free			الشهر
	المجموع Total	قطاع غزة Gaza Strip	الضفة الغربية* West Bank*	المجموع Total	قطاع غزة Gaza Strip	الضفة الغربية* West Bank*	المجموع Total	قطاع غزة Gaza Strip	الضفة الغربية* West Bank*	
	January	154,954	53,839	101,115	152,060	53,120	98,940	2,894	719	
February	155,061	53,596	101,465	152,410	52,886	99,524	2,651	710	1,941	شباط
March	156,033	53,726	102,307	153,589	53,034	100,555	2,444	692	1,752	آذار
April	157,077	53,854	103,223	154,939	53,223	101,716	2,138	631	1,507	نيسان
May	159,950	54,454	105,496	157,877	53,842	104,035	2,073	612	1,461	أيار
June	169,623	57,429	112,194	167,922	56,894	111,028	1,701	535	1,166	حزيران
July	172,593	57,899	114,694	171,163	57,503	113,660	1,430	396	1,034	تموز
August	170,843	56,950	113,893	169,558	56,597	112,961	1,285	353	932	أب
September	170,584	56,493	114,091	169,380	56,119	113,261	1,204	374	830	أيلول
October	169,819	55,261	114,558	168,773	54,933	113,840	1,046	328	718	تشرين أول
November	175,122	56,339	118,783	174,131	56,021	118,110	991	318	673	تشرين ثاني
December	186,380	60,702	125,678	185,473	60,412	125,061	907	290	617	كانون أول

(\*)The data excluding those parts of Jerusalem, which were annexed by Israel in 1967

1967

(\*)

Source: Palestine Telecommunications Company, 2012

المصدر: شركة الاتصالات الفلسطينية، 2012



**State of Palestine  
Palestinian Central Bureau of Statistic**

**Transportation and Communication Statistics in  
Palestine: Annual Report 2012**

**July, 2013**

PAGE NUMBERS OF ENGLISH TEXT ARE PRINTED IN SQUARE BRACKETS.  
TABLES ARE PRINTED IN THE ARABIC ORDER (FROM RIGHT TO LEFT)

**This document is prepared in accordance with the standard  
procedures stated in the Code of Practice for Palestine Official  
Statistics 2006**

© July, 2013  
All rights reserved.

**Suggested Citation:**

**Palestinian Central Bureau of Statistics, 2013. *Transportation and Communication Statistics in Palestine: Annual Report 2012*. Ramallah-Palestine.**

All correspondence should be directed to:  
**Palestinian Central Bureau of Statistics**  
**P.O. Box 1647, Ramallah – Palestine**

Tel: (972/970) 2 298 2700  
Fax: (972/970) 2 298 2710  
Toll free: 1800300300  
E-Mail :diwan@pcbs.gov.ps  
Web-Site: <http://www.pcbs.gov.ps>

**Refrence No:1992**

## **Acknowledgment**

**The Palestinian Central Bureau of Statistics (PCBS) extends its deep appreciations to all Palestinian ministries, public and private institutions that provide PCBS with the requested data derived from administrative records in the report for being well dedicated in performing their duties.**

**The report of the Transportation and Cmmunication 2012, has been prepared by a technical team from PCBS and with joint funding by Palestine and the Core Funding Group (CFG) for the year 2013 represented by the Representative Office of Norway to PNA and the Swiss Development and Cooperation Agency (SDC).**

**Moreover, PCBS very much appreciates the distinctive efforts of the Core Funding Group (CFG) for their valuable contribution to funding the project.**

## Team Work

- **Report Preparation**

Maher Shami

- **Maps Design**

Ihtisab Obidi

- **Dissemination Standard**

Hanan Janajreh

- **Preliminary Review**

Hani Al-Ahmed

Ibrahim Al-Tarsha

Saleh Al Kafri, PhD

- **Final Review**

Mahmoud Jaradat

- **Overall Supervision**

Ola Awad

President of PCBS

## Important Note

### Abbrevitions

**ISIC-4:** International Standard Industrial Classification Economic Activities, version 4

**NIS** New Israeli Shekel

**Symbols Used in Tables:** (-): Nil.  
(.): Data not available.

## Table of Contents

<b>Subject</b>	<b>Page</b>
<b>List of Tables</b>	
<b>Introduction</b>	<b>[13]</b>
Chapter One: <b>Main Findings</b>	<b>[15]</b>
1.1 Land Transportation	[15]
1.2 The Post Office Data	[15]
1.3 Telecommunications	[15]
1.4 Cellular Phone	[16]
Chapter Two: <b>Methodology and Data Quality</b>	<b>[17]</b>
2.1 Data Collection	[17]
2.2 Coverage	[17]
2.3 Accuracy of the Data	[17]
2.4 Comparison of the Data	[17]
2.5 Technical Notes	[17]
Chapter Three: <b>Concepts and Definitions</b>	<b>[19]</b>
<b>Tables</b>	<b>41</b>

## List of Tables

<b>Table</b>	<b>Page</b>
<b>Table 1:</b> Employed Persons in the Transportation, Storage and Communication Activities in Palestine by Selected Indicators, 2008- 2012	<b>41</b>
<b>Table 2:</b> Licensed Road Vehicles in Palestine by Region and Type of Vehicle, 2012	<b>43</b>
<b>Table 3:</b> Number of New Registered Road Vehicles in the West Bank by Governorate and Type of Vehicle, 2012	<b>44</b>
<b>Table 4:</b> Licensed Road Vehicles in Palestine by Region and Type of Fuel, 2012	<b>45</b>
<b>Table 5:</b> Licensed Road Vehicles in Palestine by Region and Vehicle Age, 2012	<b>46</b>
<b>Table 6:</b> Rate of Licensed Motorized Vehicles Per 1000 Capita in the Palestine by Type of Vehicle and Region, 2012	<b>47</b>
<b>Table 7:</b> Number of Driving Schools and Number of Trainers and Number of Vehicles in Palestine by region and Governorate , 2012	<b>48</b>
<b>Table 8:</b> Licensed Garages in Palestine by region and Type of Garage, 2012	<b>49</b>
<b>Table 9:</b> Number of Driving Licences Issued in Palestine by Year and Region, 1999-2012	<b>50</b>
<b>Table 10:</b> Number of Driving Licences Issued in the West Bank by Class and Age, 2012	<b>51</b>
<b>Table 11:</b> Number of Registered Road Traffic Accidents and Casualties by Type of Injury in Palestine, 2008-2012	<b>52</b>
<b>Table 12:</b> Number of Registered Road Traffic Accidents in the West Bank by Governorate and Month, 2012	<b>53</b>
<b>Table 13:</b> Number of Casualties in Registered Road Traffic Accidents in the West Bank by Governorate and Type of Injury, 2012	<b>54</b>
<b>Table 14:</b> International Dispatched and Receipt Mail From and to the West Bank by Month and Type of Mail, 2012	<b>55</b>
<b>Table 15:</b> International Dispatched and Receipt Mail From and to Gaza Strip by Month and Type of Mail, 2012	<b>57</b>
<b>Table 16:</b> Domestic Mail in Palestine by Month and Type of Mail, 2012	<b>59</b>
<b>Table 17:</b> Number of Mail Service Centers and P.O. Boxes in Palestine by Region and Governorate, 2012	<b>60</b>



<b>Table</b>		<b>Page</b>
<b>Table 18:</b>	Number of Main Telephone Lines in Palestine by Year and Region, 1999-2012	<b>61</b>
<b>Table 19:</b>	Number of Main Telephone Lines in Palestine by Month, Region and Type of Subscription, 2012	<b>62</b>
<b>Table 20:</b>	Number of Public Phone in Palestine by Month and Region, 2012	<b>63</b>
<b>Table 21:</b>	Number of telephone Local Calls in Palestine by Month and Region, 2012	<b>64</b>
<b>Table 22:</b>	Number of Palestinian Cellular Phone Subscriptions in Palestine by Year and Region, 2012	<b>65</b>
<b>Table 23:</b>	Number of Subscribers and Number of (ADSL) Lines in Internet Service in Palestine by Month and Region, 2012	<b>66</b>

## **Introduction**

The Transportation and Communication is one of the main economic activities in Palestinian society. This activity contributes to the gross domestic product significantly, and provides working opportunities for a considerable number of people.

This report presents the available statistics on the main components of the transportation system. A major component is land transport that covers vehicles by type, in addition to other indicators like driving schools, number of garages, etc. The report also shows the main indicators of the air transport activity, which covers the departure and arrival flights. Also the report presents figures on post including letters with their traditional classification, and the main elements of communication system including main telephone lines and their waiting list, telephone calls and their lengths.

This report consists of three chapters along with a group of tables. The first chapter consists of presents the main findings of the report. The second chapter sheds light on the methodology and data quality main concepts and definitions used in this report. The third chapter presents the main concepts and definitions used in this report

PCBS is pleased to introduce the annual report 2012 as the fourteenth publication of report series on transportation and communication statistics in Palestine. The main objective of publishing this series is to establish a comprehensive database covering the main indicators on the transportation and communication sector in Palestine, and to formulate a time series about these indicators that show the changes.

**July, 2013**

**Ola Awad  
President of PCBS**

## Chapter One

### Main Findings

#### 1.1 Land Transportation

##### 1.1.1 Vehicles

The total number of licensed vehicles in Palestine in 2012 was 207,007, the percentage distribution of licensed vehicles in Palestine shows that the majority were private cars 67.0%, on the other hand, the percentage of trucks and commercial cars was 15.8%, Taxis formed 5.3% of the total vehicles. The percentage of agricultural tractors in Palestine was 0.4%, while the remaining vehicles, formed 11.5% (*Table 2*).

Regarding new registered road vehicles in the West Bank in 2012, the monthly average of registered vehicles was 1,136 vehicles.

The percentage distribution of registered new vehicles in the West Bank by type shows that the highest percentage was for registered private cars by 72.5% followed by taxis was 12.6%, The percentage of the trucks and commercial cars, which was 10.5%. on the other hand the percentage of other vehicles, which cover moped, motorcycles, buses, trailers and semi-trailers, road tractors, agricultural tractors, in addition to other vehicles, was 4.3% (*Table 3*).

##### 1.1.2 Driving Licenses

The total number of issued driving licenses in the West Bank was 25,511 at the end of 2012. (*Tables 9,10*).

##### 1.1.3 Road Accidents

The total number of registered road accidents in the West Bank amount to 8,037. (*Tables 11,12*).

On the other hand, the number of casualties resulting from those accidents reached 8,195. figure shows the number of road accidents and casualties in the West Bank. (*Table 13*).

#### 1.2 The Post Office Data

International received mail in the West Bank consisted of 529,077 postal materials in 2012, with a monthly average of 44,090 pieces. The percentage distribution of these materials shows that the majority was regular letters, as they formed 87.0%. The percentage of printed materials was 9.2%, while the percentage of registered letters was 1.9%, and the remaining percentage 1.9% covered express mail, parcels, telegrams, and small packets.

On the other hand, the number of international received mail in Gaza Strip consisted of 59,863 postal materials in 2012, with a monthly average of 4,989 pieces. The percentage distribution of these materials shows that the majority was regular letters, as they formed 66.9%. The percentage of printed materials was 22.3%, while the percentage of registered letters was 5.2%, and the remaining percentage 5.6% covered express mail, parcels, telegrams, and small packets.

#### 1.3 Telecommunications

The total number of main telephone lines in Palestine at the end of 2012 was 393,880 lines with an increase rate of 2.9% compared to the previous year, (*Tables 18, 19*).

Regarding to the total number of public phone lines in Palestine was 2,357 Lines at the end of 2012, and of which 2,245 in the West Bank and 112 in Gaza Strip, (*Tables 20*).

#### **1.4 Cellular Phone**

The total number of subscriptions of Cellular phone at the end of 2012 in Palestine was 3.2 Million used bill and card system. (*Tables 22*).

## Chapter Two

### Methodology and Data Quality

#### 2.1 Data Collection

The data of this report is based primarily on administrative records of various institutions, in addition to data extracted from some surveys performed by PCBS. After getting data from its sources, it was rearranged, reclassified, and then tabulated in a way to achieve the purpose of this report.

#### 2.2 Coverage

Although the main objective of publishing annual reports on transportation and communication is to construct time series of the main indicators related to the transportation and communication sector in Palestine, it is noticed that this report mainly covers the main indicators related to transportation and communication during 2012, with only a few indicators from past years.

The majority of data does not provide information about Jerusalem, except data on labor force. and cellular phone.

#### 2.3 Accuracy of the Data

##### 2.1.3 Statistical Errors

The report was implemented on the basis of a comprehensive census for all studied statistical units; therefore this survey was free of statistical (sampling) errors.

##### 2.2.3 Non-Statistical Errors

Non-statistical errors are possible to occur at all stages of preparing the report, during the data collection or introduction, and to avoid errors and reduce their impact were made great efforts during the visit to check the data sources to ascertain data validity, and to examine the data entry program before starting the process of data entry.

#### 2.4 Comparison of the Data

Comparison exercises were done with previous year's survey of transportation and communication statistics, the results reveal consistency with previous surveys data.

#### 2.5 Technical Notes

There are important technical notes which should be taken into consideration when reviewing this report, which are as follows:

- Tables exclude data for those parts of Jerusalem which were annexed force fully by Israel in 1967, except for labor force and Cellular Phone data.
- It may be noticed that the details of the value of some indicators may not add to its total, due to rounding calculations.
- Vehicle data, characteristics, Internet cafes in the Gaza Strip are not available from administrative records in 2012.
- The data of length of calls in minutes in 2012 are not available.
- The data on Road network length in Palestine 2012 is not available.
- The differences in the number of vehicles by governorates is due to the source(Ministry of transport report, 2012)

## Chapter Three

### Concepts and Definitions

**Wage employee: (indicator)**

A person who works for a public or private employer or under its supervision and receives remuneration in wage, salary, commission, tips, piece rates or in kind ...etc. This item includes persons employed in governmental, non – governmental and private institutions along with those employed in a household enterprise in return for a specific remuneration

**Average Weekly Working Hours: (indicator)**

Total weekly working hours of employees whose wages are known, divided by the number of employees.

**Average Monthly Working Days per Employee: (indicator)**

Total monthly workdays of employees whose wages are known divided by the number of employees.

**Average Daily Wage per Employee: (indicator)**

Total net wages paid to all employees divided by total working days. wages received in different currencies are converted into New Israeli Shiekles according to the exchange rate in the survey month.

**Vehicle:**

A vehicle running on wheels and intended for use on roads.

**Motor Vehicle:**

A vehicle fitted with auto propulsive engine, it is normally used for carrying persons or goods, and drawing vehicles.

**Private Car:**

A motor vehicle, other than motorcycle intended for the carriage of passengers and designed to seat no more than 9 persons (including the driver).

**Taxi:**

A motor vehicle intended for the carriage of passengers (in return for payment), and designed to seat no more than 9 persons (including the driver), and described in its license as a taxi.

**Motorcycle:**

Two wheeled motor vehicles with or without sidecar.

This category includes scooter, three-wheeled vehicles not exceeding 400 kg.

Motorcycles are classified according to the engine capacity as: less than 50 cm<sup>3</sup>, 50-100 cm<sup>3</sup>, 100-250 cm<sup>3</sup>, and greater than 250 cm<sup>3</sup>.

**Bus:**

A motor vehicle designed to carry more than 9 passengers (including the driver).

**Trailer:**

Goods road vehicles designed to be hauled by a road motor vehicle. Excluding agricultural trailers and caravans.

**Semi-Trailer:**

Goods road vehicle with no front axle designed in such a way as to be hauled by road tractor.

**Road Tractor:**

A motor vehicle designed exclusively or primarily to haul other vehicles, which are not power-driven. Agricultural tractors are excluded.

**Truck:**

A motor vehicle designed for another purpose than passenger transport, its height is more than 250 cm, and described in its license as a truck.

**Commercial Car:**

A motor vehicle designed for another purpose than passenger transport, weights more than 2200 kg, its height is more than 175 cm and less than or equal to 250 cm, and described in its license as a commercial vehicle.

**Other Vehicle:**

A vehicle designed for purposes other than the carriage of passengers or goods. This category includes: ambulances, mobile cranes, self-propelled rollers, bulldozers with metallic wheels or tracks, vehicles for recording film, radio, and TV programs, mobile library vehicles, towing vehicles for vehicles in need of repair.

**Rate of Licensed Motorization per 1000 Capita: (indicator)**

Number of vehicles divided by the number of people multiplied by 1000 (number of vehicles/number of people x 1000).

**Bypass Road:**

Construct by Israeli Occupation to link the Settlements with each other and with Israel.

**Road Traffic Accident:**

An accident, which occurred as a result of the vehicle being in a state of motion and in which people were injured.

**Killed in Road Traffic Accident:**

A person who died as a result of the accident, or died of his injuries within 30 days of the accident.

**Seriously injured:**

A person who was hospitalized as a result of the accident for a period of 24 hours or more.

**Slightly injured:**

A person who was injured as a result of road traffic accident and was not hospitalized, or was hospitalized for short period (up to 24 hours).

**Regular Flights:**

A series of flights fulfilling at least the following conditions: they are performed by a passenger aircraft, their tickets are open for free sale to the general public; they are planned and adjusted according to the needs of traffic, carried out according to existing aviation agreements, The operating license and the fixed timetables are also available to the general public.

**Irregular Flights:**

All the flights for remuneration other than those reported under regular flights.

**Number of Passengers in a Flight: (indicator)**

All passengers, excluding airplane staff and infants (less than 2 years of age).

**Number of Available Seats: (indicator)**

The total number of passenger seats available for sale between each pair of airports on a flight stage (excludes seats not actually available for the carriage of passengers because of the weight of fuel or other load).

**Letter:**

A post matter that has the property of communication. It could be written, typed or both. This includes commercial samples, which are contained in an envelope. The lowest limit of the shortest length is 140, while the lowest limit of the shortest width is  $90 \text{ mm} \pm 2 \text{ mm}$ . The sum of length, width, and thickness should not be greater than 900 mm. The highest limit of the length of any dimension is 600 mm. The weight of the letter should be between 20-2000 g.

**Regular Letter:**

A letter that is sent by normal post with regular fees.

**Express Mail:**

A letter intended to be delivered quickly (24 hours) from the moment of reception by the post center. Normally extra fees are applied.

**Printed Matter:**

A post matter, which is printed by a printing shop, or by any other method such as copying, books, and booklets. It has a cultural and scientific property, and not communication property. The lowest limit of the printed material length and width is  $140, 90 \text{ mm} \pm 2 \text{ mm}$  respectively. The highest limit of the sum of length, width, and thickness is 900 mm. The highest limit of the length of any dimension is 600 mm. The highest weight of the printed material is 2 kg, it is also allowable to reach 5 kg when the printed material is book.

**Registered Letter:**

A letter to which extra fees is applied and for which the sender gets a receipt. It is normally delivered to the addressee or other person acting as such after checking his identity and taking his signature on a receipt.

**Post Packet:**

Material posted as presents, such as food, clothes, beauty-care materials, perfumes, and commercial samples. The lowest limit of post packet length and width is  $140, 90 \text{ mm} \pm 2 \text{ mm}$  respectively. The highest limit for the sum of length, width, and thickness is 900 mm. The highest limit of the length of any dimension is 60 mm. The highest weight of the post packet is 2 kg.

**Parcel:**

Material posted as closed flexible or rigid packet, containing papers, books, food, clothes, etc. The highest limit for the sum of the parcel lengths, twice the width, and twice the thickness is 3 m. The highest limit of the length of any dimension is 1.5 m. The highest weight of inland parcel is 20 kg, while in case of parcels sent abroad the highest limit is 5-20 kg, or according to the rules of the receiving country.

**Telegram:**

Letter with a limited amount of words, sent inland or abroad by telex, fax, or telephone. Fees are paid according to the number of words.



**Local Telephone Traffic (Minutes):**

Local telephone traffic consists of effective (completed) fixed telephone line traffic exchanged within the local charging area in which the calling station is situated. This is the area within which one subscriber can call another on payment of the local charge (if applicable). This indicator should be reported in the number of minutes. If the indicator is reported in calls or meter units (pulses), then an appropriate conversion figure to minutes of traffic should be supplied.