



**2011**

**2006**

.2011 1432 ©

:

.2011

.2011

:

-

1647 . .

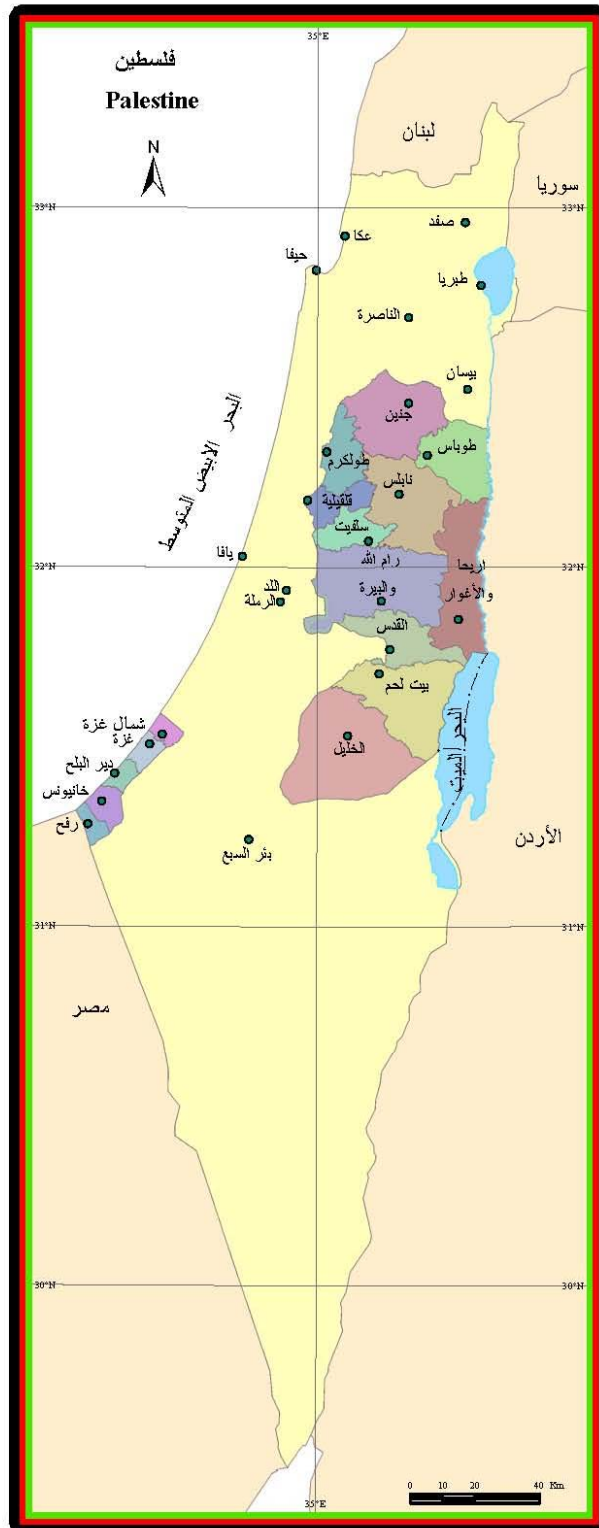
(970/972) 02-2982700:

(970/972) 02- 2982710 :

خط مجاني: 1800300300

diwan@pcbs.gov.ps :

<http://www.pcbs.gov.ps> :





.

**2011**

**2011 (CFG)**  
**.(SDC)**

**(PNA)**

.

**(CFG)**



•

•

•

•

•





11

13

19

23

27

31

37

39

43

47

:

:

:

:

:

:

:

:

:



2007

**2011**



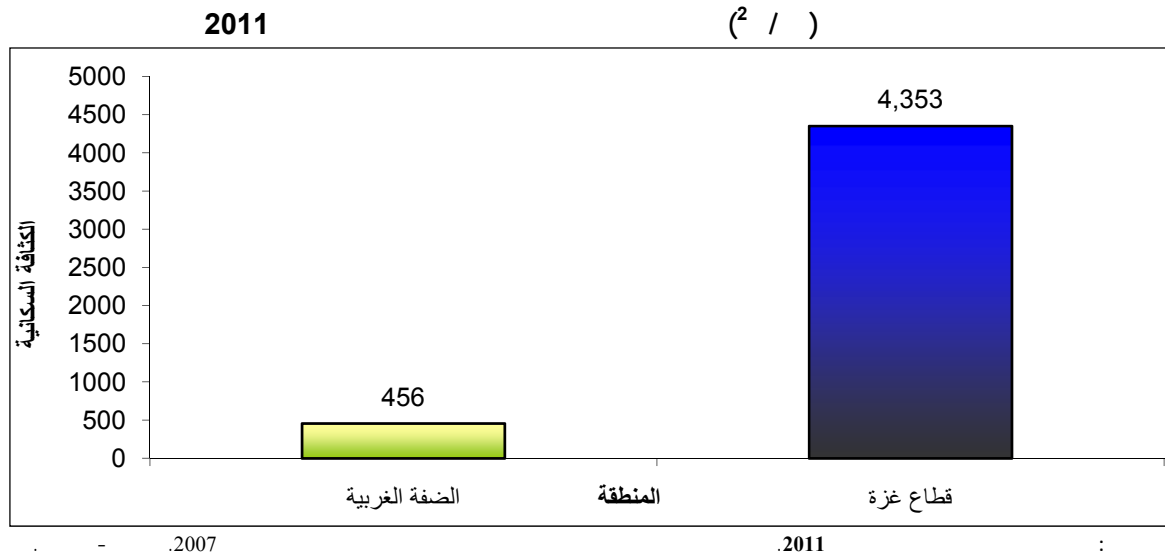
:

2011	4.17
------	------

	2011		2007	
.	100	103.2	2.05	2.12
	1.27	1.31	2.58	4.17
	1.59			100
		100		103.2
		103.1		782
%16.9		%73.8	2011	806
			.%9.3	
2011				620
				47
				552
				196

2011
------

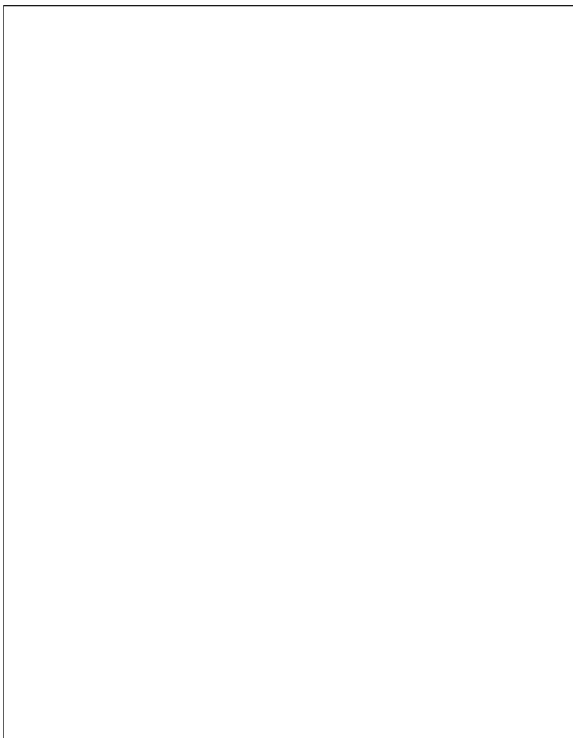
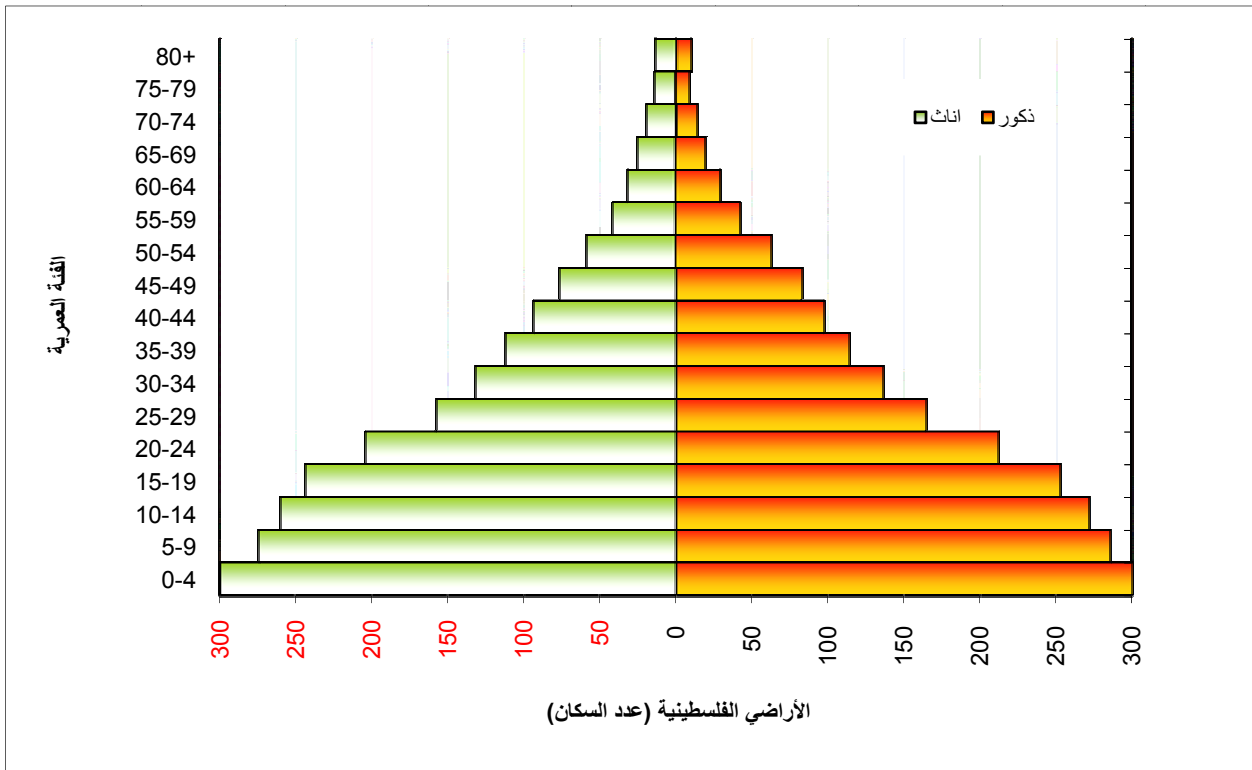
1.6				
			<sup>2</sup> 365	
				1948
456	<sup>2</sup> /	693	2011	
			<sup>2</sup> /	4,353
				<sup>2</sup> /



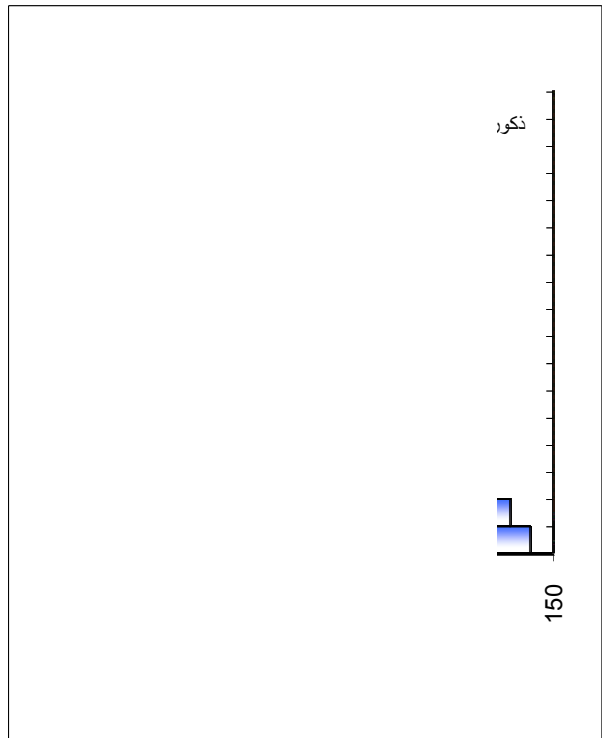
2011

%38.9	%16.3	%13.7	%14.7
( 65 )		%40.8	(14-0)
%3.3		%2.9	%44.1
		2011	%2.4
19.7	18.8	2011	17.5

2011



2007



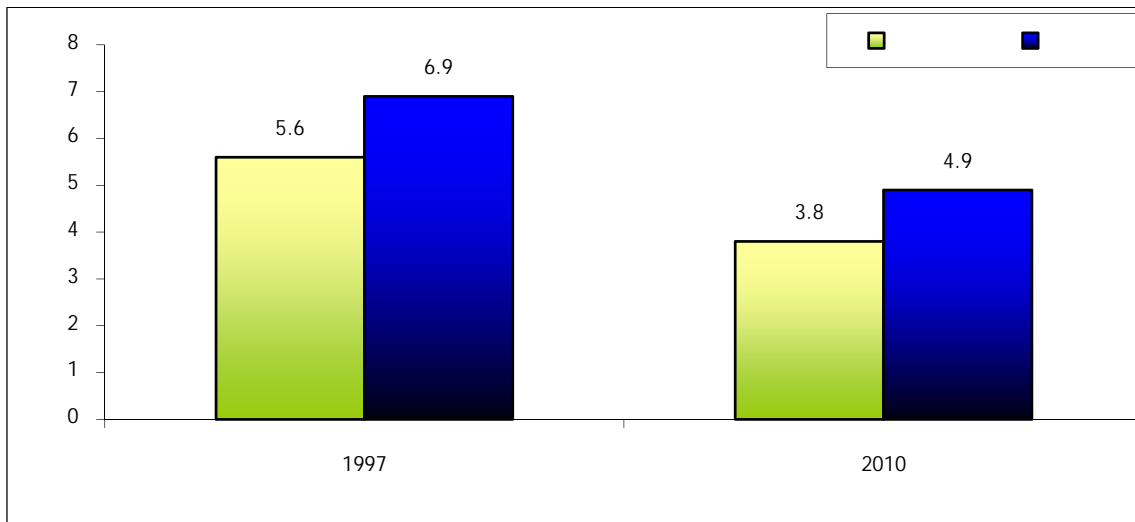
2011

:

**2010**

	1997	2010	2010	
-1997)	5.6	6.0	4.2	
	4.2	4.3	2010	(2010
		6.9	2010	4.9
				4.5
		2.1	3.0	3.8

(\*\* 2010 \* 1997)



.2011 : \*

.2011 : \*\*

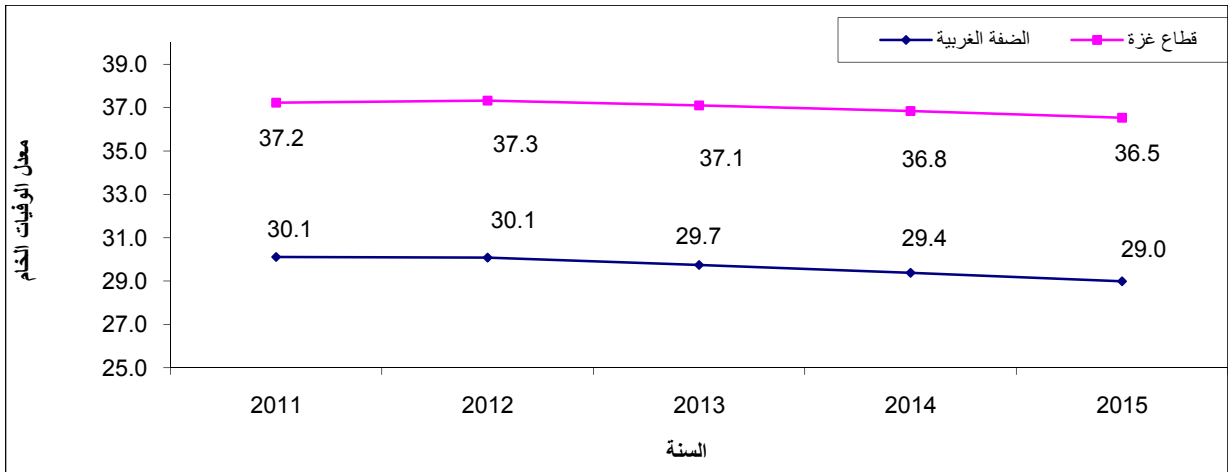
<sup>1</sup> Population Reference Bureau. World Population Data Sheet, 2010.



**2015-2011**

32.8  
 2015 31.9 2011  
 30.1 2011  
 37.2

(2015-2011)



2007

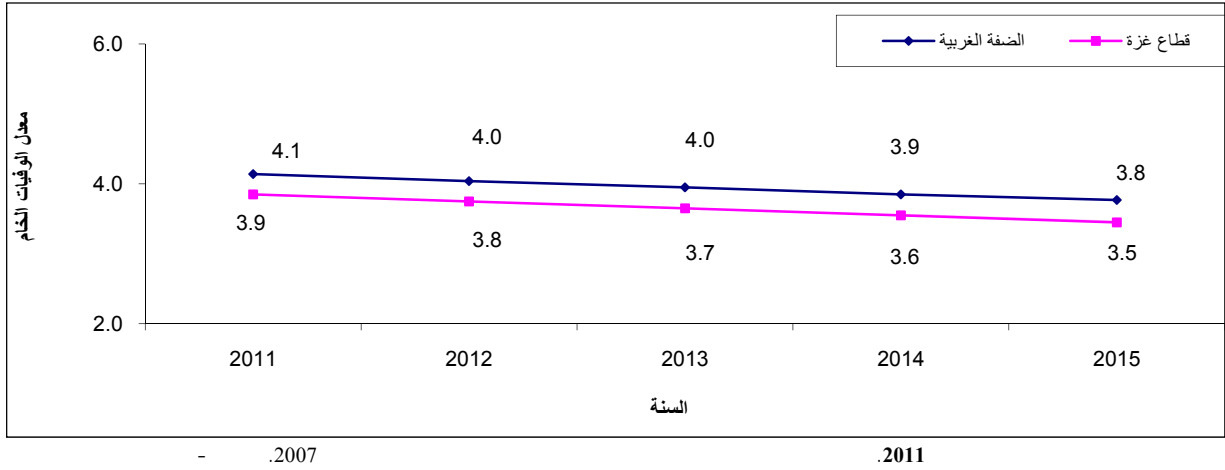
2011

:

1000 4.0  
 2015 1000 3.6 2011  
 3.8 2011 4.1  
 3.5 2011 3.9 2015  
 2015

2006-2004 ( 23.7 27.3 ) 22.8  
 19.0 59.0 23.0 2010  
 18.0 28.0  
 81.0

(2015-2011)



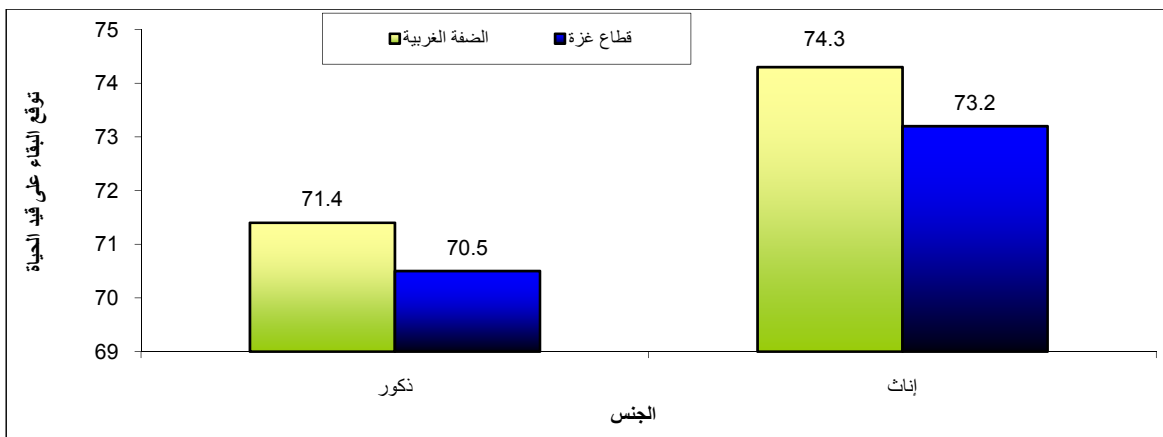
**2.9% معدل النمو السنوي للسكان في الأراضي الفلسطينية منتصف العام 2011**

3.3% 2.6% 2.9% 2011

**2011**

73.9 71.0 72.4 2011  
72.8 2011  
70.5 71.8 74.3 71.4  
73.2

**2011**



:

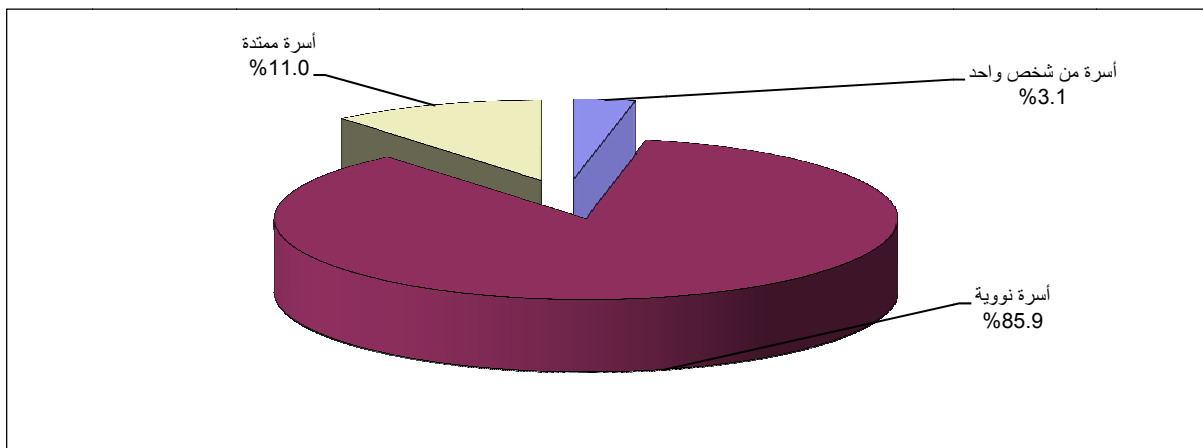


469	715	2011	246
		2010	.2007
6.4	2010	5.9	1997
6.1	2010	5.6	.1997
6.9	2010	6.5	1997
			. 1997



%85.9	2010	
	.2007	%81.6
%11.0		%82.5
.%3.1		%85.7
		.2010

**2010**



.2010 .2011 :

<b>2010</b>	<b>%8.4</b>
-------------	-------------

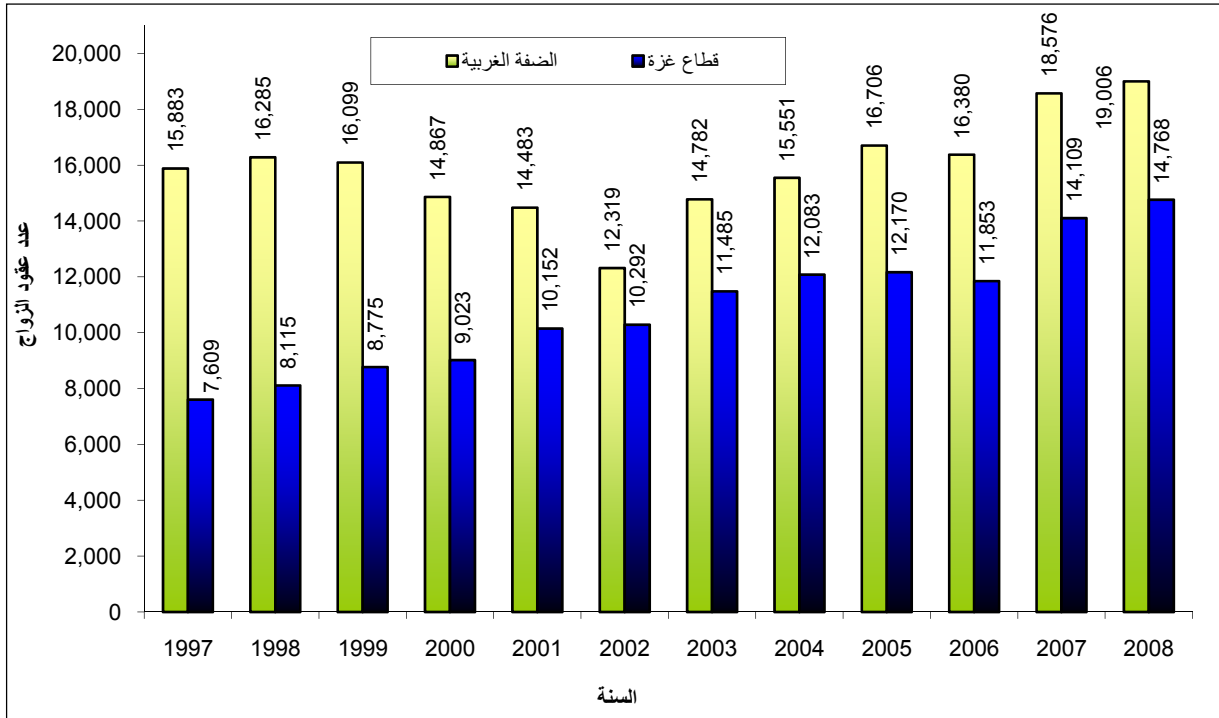
%7.2 %9.6 %8.4 2010

6.2 3.2 2010

<b>2007</b>	<b>2008</b>	<b>%3.3</b>
-------------	-------------	-------------

2007 2008  
 (2007 1,089 ) 2007 32,685 2008 33,774  
 %56.3 ) 19,006 2008  
 .2007 430 ( ) 2008 14,768  
 %43.7 ) 2007 659 (

**(2008-1997)**



- .2008 .2009 :

**2008**

	2008	1000	8.8
8.7	2007	.	10.1
		10.0	7.9
			1000

**2008-1997**

	2008				
2008	19.5	1997	23.0	2008	24.8
25.4					1997
19.0	24.0				18.0
					19.8
					2008

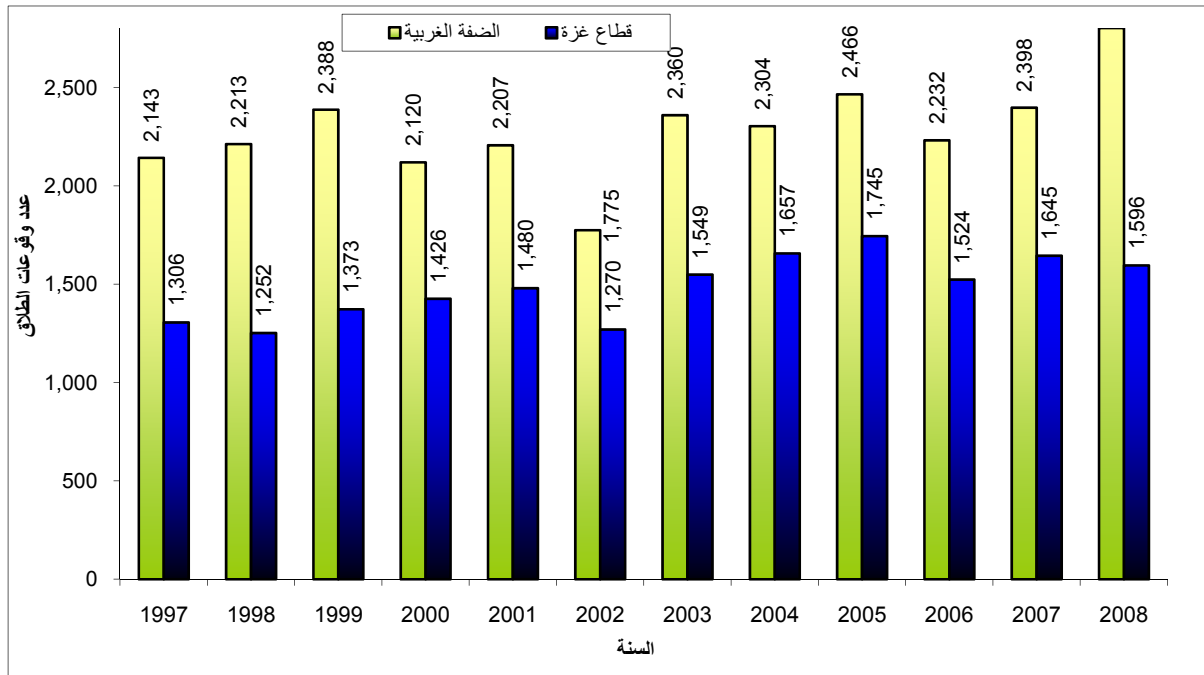
**2008-1997**

		(49-15)	2010
	%29.9	%25.4	%27.1
	%55.8		
		%52.5	%57.9

**2007 2008 %8.8**

4,399	2008		
	(2007	356	) 2007
%59.3	2,803	2008	4,043
2007	(		
1,596			406
(2008			%40.7
		.2007	49

(2008-1997)



- .2008 .2009 :



2008

1000

1.1

1.0

2007

1.1

1.2

1.2

1.0

1000

:

<b>2011</b>
-------------

%41.0

15                      10                      ) 2011                      (                      15                      )

%37.0                      %43.2                      .(                      4

%66.7                      %11.0                      %16.7                      %14.7

%62.5                      %69.0

%8.8                      %78.3

**15**

**2011**

			عمالة تامة	المجموع			
<b>100</b>	<b>21.7</b>	<b>8.8</b>	<b>69.5</b>	<b>100</b>	<b>59.0</b>	<b>41.0</b>	
<b>100</b>	20.5	10.0	69.5	<b>100</b>	33.3	66.7	
<b>100</b>	27.3	3.2	69.5	<b>100</b>	85.3	14.7	
<b>100</b>	<b>17.4</b>	<b>10.1</b>	<b>72.5</b>	<b>100</b>	<b>56.8</b>	<b>43.2</b>	
<b>100</b>	16.3	11.7	72.0	<b>100</b>	31.0	69.0	
<b>100</b>	21.3	3.0	75.2	<b>100</b>	83.3	16.7	
<b>100</b>	<b>30.8</b>	<b>6.2</b>	<b>63.0</b>	<b>100</b>	<b>63.0</b>	<b>37.0</b>	
<b>100</b>	28.9	6.7	64.4	<b>100</b>	37.5	62.5	
<b>100</b>	42.1	3.6	54.3	<b>100</b>	89.0	11.0	

- 2011

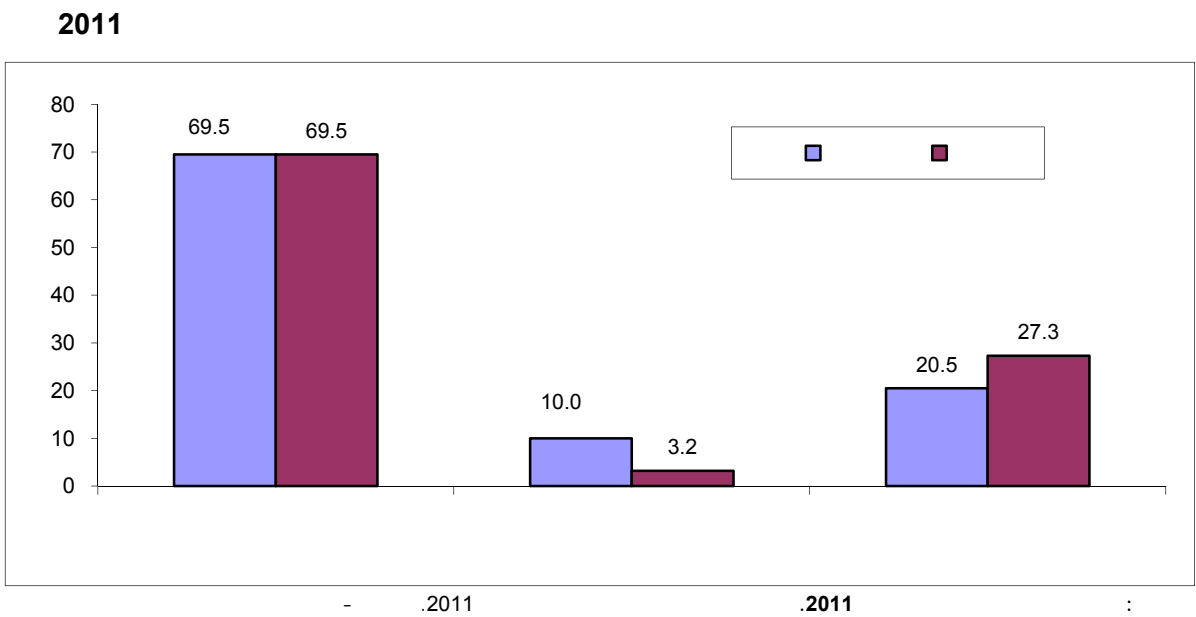
.2011

:

:

<b>2011</b>	<b>(%21.7)</b>
-------------	----------------

2011  
 %17.4 %21.7  
 %20.5 %27.3 %30.8  
 ) %6.0 %13.1  
 .(2011



<b>2011</b>
-------------

2011  
 .%22.4 %22.8  
 %11.6 %11.1  
 .%33.2 %35.2  
 .%24.9



:

<b>%43.5</b>
<b>2000</b>
<b>2011</b>

2011	%14.0	%24.8 (2000 )
	%15.4 (2000 )	
%66.7		%68.8
%18.1		%73.9
%6.6 %4.4	2011	%18.8 2000
%5.8 2000	%9.9	
		2011
)		
%55.2 2011	%37.7 (	
.	%7.0	%34.3
%53.8		
%21.3		%16.8
	%10.5	%14.1
%15.4	%41.7 )	(%22.9)
		%17.4 .(
	85.0	2011
	164.0	64.6
39.2	42.6	
		39.8



(2011/1/14 2010/1/15)

.( )

:

**%36.4**

2010

993.8 )

886.9

5.7 ) 6.0

(

680.7

(

6.6

%42.6

%34.1

%36.4

911

877

718

6.1

6.0

:

**2010 70**

173.1 )

(147.5)

.(

103.1

%42.6

%34.1

) %36.4

152.1

(

118.1

144.3

-2004)

2001 (1998-1996)

.2009 (2007

2010	2009	2007	2006	2005	2004	2001	1998	1997	1996	
3,757	3,848	1,231	1,281	2,152	3,098	3,022	2,836	3,275	4,500	
6.0	6.0	6.4	6.4	6.5	6.6	6.9	7.0	7.1	6.9	
322	284	224	208	199	193	183	220	223	229	
56	55	44	38	42	35	34	46	50	50	
77	69	40	55	52	53	51	40	41	39	
49	43	38	36	37	32	32	30	33	39	
35	42	29	28	21	29	19	21	23	21	
135	114	97	81	78	69	60	55	62	64	
31	27	21	23	19	18	26	19	20	20	
13	16	15	12	15	13	17	17	16	18	
24	32	16	15	15	13	12	11	12	13	
114	107	84	94	106	80	77	88	99	99	*
<b>887</b>	<b>789</b>	<b>608</b>	<b>590</b>	<b>584</b>	<b>535</b>	<b>511</b>	<b>547</b>	<b>579</b>	<b>592</b>	

\*

.2011

:

الفقر:



.1997

( )

.( %38.0 %18.3 ) 2010 %25.7

%8.8 ) %14.1

2,237 .( %23.0

. 1,783

**2010-2009**

2010		2009		2010		2009		
<b>100.0</b>	<b>14.1</b>	<b>100.0</b>	<b>13.7</b>	<b>100.0</b>	<b>25.7</b>	<b>100.0</b>	<b>26.2</b>	
38.8	8.8	42.2	9.1	44.6	18.3	47.3	19.4	
61.2	23.0	57.8	21.9	55.4	38.0	52.7	38.3	

- .2010-2009

.2011

:



( )

**2010-2009**

2010		2009	
100.0	6.4	100.0	6.3
36.7	4.1	41.4	4.2
63.3	10.0	58.6	10.0

- .2010-2009

.2011

:



:

<b>2010</b>	<b>( 15)</b>	<b>%11.2</b>
-------------	--------------	--------------

( 15) 2010  
 .%11.2 .%10.4

. %9.2 %11.5  
 . %14.2 %8.3

**2010 ( 15)**

7.0	2.6	<b>4.8</b>	8.3	2.2	<b>5.2</b>	7.8	2.4	<b>5.1</b>	
4.2	5.4	<b>4.8</b>	7.6	6.1	<b>6.8</b>	6.4	5.9	<b>6.1</b>	
11.5	14.6	<b>13.0</b>	15.5	18.2	<b>16.8</b>	14.0	16.9	<b>15.5</b>	
37.3	37.5	<b>37.4</b>	35.1	39.6	<b>37.5</b>	35.9	38.8	<b>37.3</b>	
26.7	22.1	<b>24.4</b>	19.5	19.0	<b>19.2</b>	22.1	20.1	<b>21.1</b>	
4.5	4.7	<b>4.6</b>	4.6	4.3	<b>4.5</b>	4.6	4.4	<b>4.5</b>	
8.8	13.1	<b>11.0</b>	9.4	10.6	<b>10.0</b>	9.2	11.5	<b>10.4</b>	
<b>100.0</b>	<b>100.0</b>	<b>100.0</b>	<b>100.0</b>	<b>100.0</b>	<b>100.0</b>	<b>100.0</b>	<b>100.0</b>	<b>100.0</b>	

- 2010 .2011 :

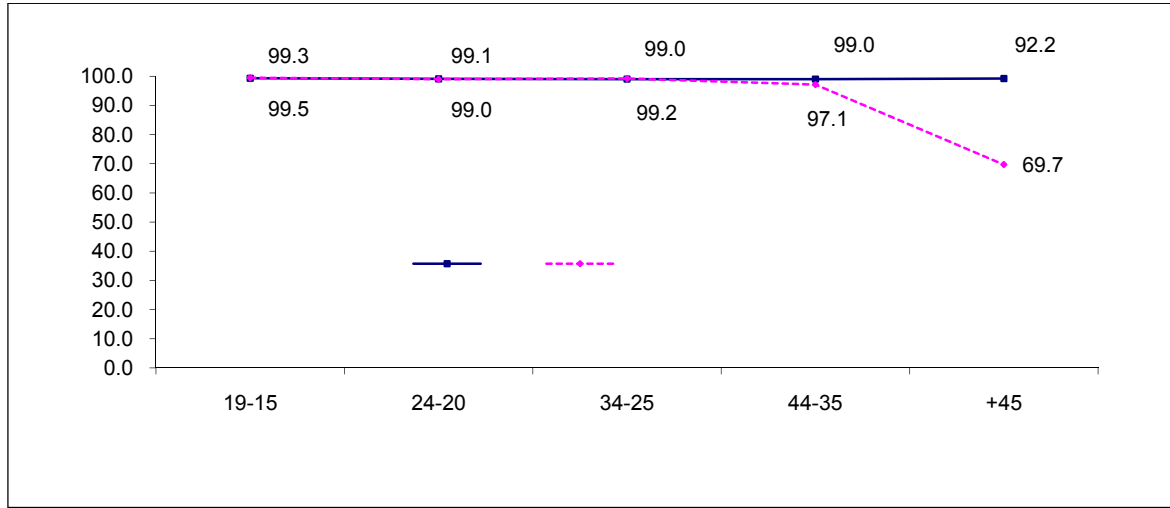
:

<b>2010</b>
-------------

%5.1 15 2010  
 .%7.8 %2.4  
 %5.2  
 .%4.8  
 15 ( 2.6 2.2)

.( %7.0 %8.3)

**2010 ( 15)**



- .2009 .2010 :

**2010 ( 15)**

			الجنس
95.2	94.8	94.9	
97.4	97.8	97.6	
93.0	91.7	92.2	

- .2010 .2011 :

2,647 2011/2010

1,128,348

36,259



**2011/2010**

				المؤشر
<b>676</b>	<b>1,971</b>	<b>2,647</b>		
392	1,573	1,965		
238	97	335		
46	301	347		
<b>458,479</b>	<b>669,869</b>	<b>1,128,348</b>		
230,139	332,825	562,964		
228,340	337,044	565,384		
<b>12,499</b>	<b>23,760</b>	<b>36,259</b>		
5,400	9,250	14,650		
4,774	9,803	14,577		
2,325	4,707	7,032		

- -2011/2010 .2011 ( )

16 14 2010/2009  
182,453  
11,614 20

**2010/2009**

		*	
6,955	78,132		
4,659	104,321		
<b>11,614</b>	<b>182,453</b>		<b>2009/2008</b>
1,601	10,928		
1,476	16,201		
<b>3,077</b>	<b>27,129</b>		**
383	4,878		
116	1,061		
<b>499</b>	<b>5,939</b>		

- -2010/2009 .2011 \*

:

<b>2009</b>	<b>%32.9</b>	<b>10</b>	<b>%31.5</b>
-------------	--------------	-----------	--------------

%35.1  
 10  
 ( %28.0 %34.9 )  
 %19.0  
 %38.7

%64.1      %51.7 )  
 %45.7      ( 10)  
 .( %44.5 %46.9 )

10 )      ( 10)      %61.0 2009  
 %62.7 ( 6      10  
 . %64.2      %58.0      . % 58.0

%6.9 2009  
 %4.6      %4.3      ( 10)  
 %3.5      %3.3  
 .      %3.0

**2009** ( **10**)

19.0	38.7	31.5	
88.1	95.1	92.5	
44.5	46.5	45.7	
32.3	25.2	27.8	
58.0	62.7	61.0	
20.0	43.5	34.9	
88.0	95.0	92.5	
46.7	47.0	46.9	
34.4	25.8	28.9	
56.7	58.7	58.0	
17.9	33.8	28.0	
88.1	95.1	92.6	
42.2	45.9	44.5	
30.2	24.7	26.7	
59.4	67.1	64.2	

2009

.2009

المصدر:



2009

.  
:

<b>2009</b>
-------------

%51.1    ) %49.2  
 .2009    (    %45.6  
 %85.8    %84.3  
           %83.6    %33.4  
                           %56.3  
 %57.1    (    10)  
           %56.8    %57.3  
                           %51.3    %62.9  
                           %64.9  
           %6.2    %6.7    %14.6  
                           %0.2    %5.8  
   %1.6  
   :

<b>3</b>	<b>10</b>	<b>2009</b>
----------	-----------	-------------

%27.2    %28.5  
 (    10)    %30.9  
                           %32.3    (%59.1)  
                           .%26.2    %38.2

(%16.1 %18.3 %22.0 )  
 (%18.4 %16.8 %15.8)  
 (%12.8 %20.5)  
 (%65.8 ( 10)  
 %63.6 %67.0  
 %57.7 %71.2  
 %95.7 %91.8 (%93.1)  
 %51.4 %47.5  
 %92.4 %40.0  
 %93.2 %91.9  
 %57.4 10 %54.3  
 %48.9

**2009**

45.6	51.1	49.2	
40.0	51.4	47.5	
30.9	27.2	28.5	
93.2	91.9	92.4	
5.3	28.9	21.0	
91.2	92.4	92.0	
93.2	97.0	95.7	
6.0	20.3	15.6	

- .2009-2007

.2009

:

<b>2010</b>
-------------

:		
%64.1	%58.8	%33.0
		.2010
		:( )
%1.2	%1.3	2010
		%8.4
		:
(2000)	(1987)	
%27.5	%29.3	%36.8
		.2010
		:
	%9.3	%26.3
		2010
		:
%2.6		
.2010		%1.4

2010

453	3,002	25	
59	63	1	
194	1,495	28	
0	476	20	
0	72	2	
<b>706</b>	<b>5,108</b>	<b>76</b>	

2010

:



%2.7

75

113

%2.4

38

%2.5

%2.9



%3.6

%4.1

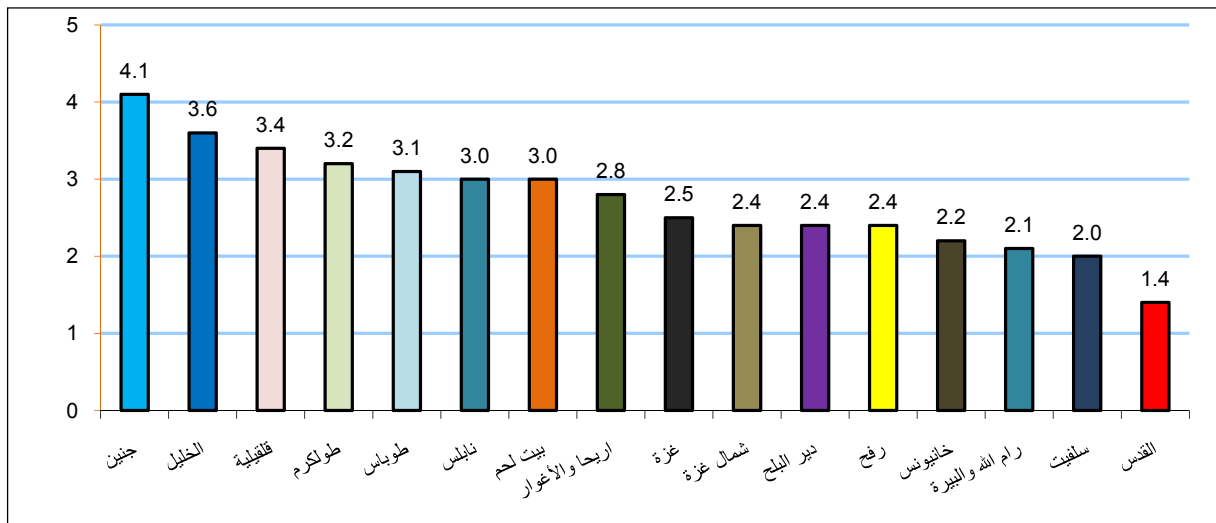
%2.5

%1.4

%2.2

%2.4

2011



.2011

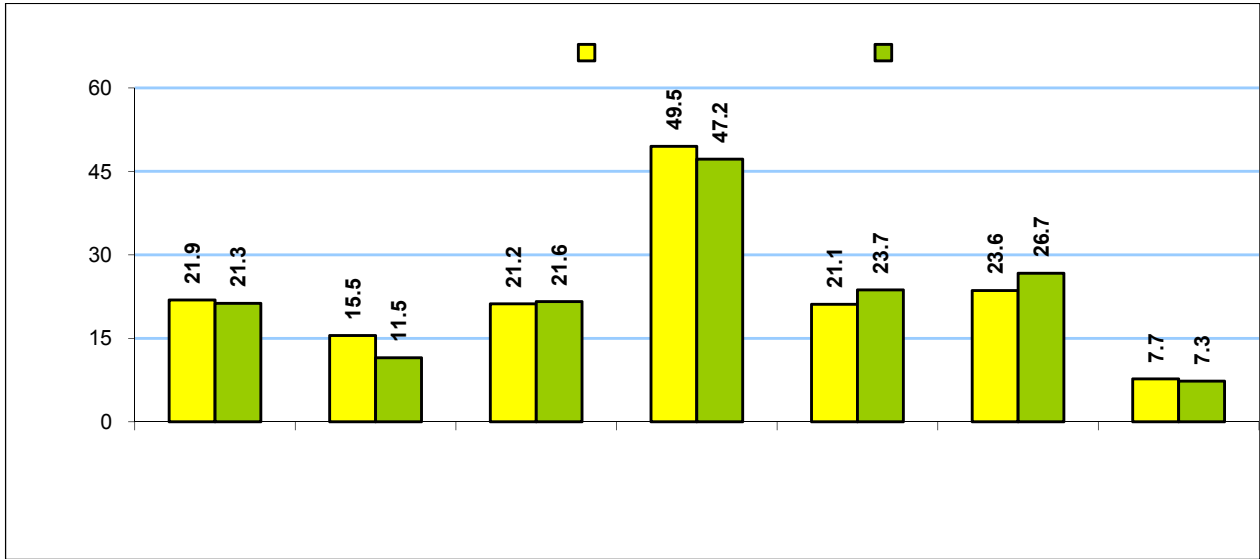
.2011

:



%23.6 %24.7  
%49.0  
%47.2  
%49.5  
%26.7

2011





:

<b>9</b>	<b>2010</b>
----------	-------------

2010 %83.6

%86.9

%81.8

.( %5.5 %10.3 ) %8.7

**2010**

	*			
<b>100</b>	<b>7.7</b>	<b>8.7</b>	<b>83.6</b>	
100	7.9	10.3	81.8	
100	7.6	5.5	86.9	

( ) \*

- .2010 .2011 :

:

<b>2010</b>	<b>1.6</b>
-------------	------------

1.6 2010

1.8

1.5

( 3)

%9.5

%12.2

%8.1

:

<b>2010</b>	<b>%50.2</b>
-------------	--------------

%47.8

%50.2 2010

%41.9

%66.4

**2010**

	*					
<b>100</b>	<b>0.3</b>	<b>0.8</b>	<b>50.2</b>	<b>47.8</b>	<b>0.9</b>	
<b>100</b>	<b>0.3</b>	0.8	41.9	55.8	1.2	
<b>100</b>	<b>0.1</b>	0.7	66.4	32.5	0.3	

( ) \*

- .2010 .2011 :

:

<b>%91.4</b>
--------------

%91.4 2010

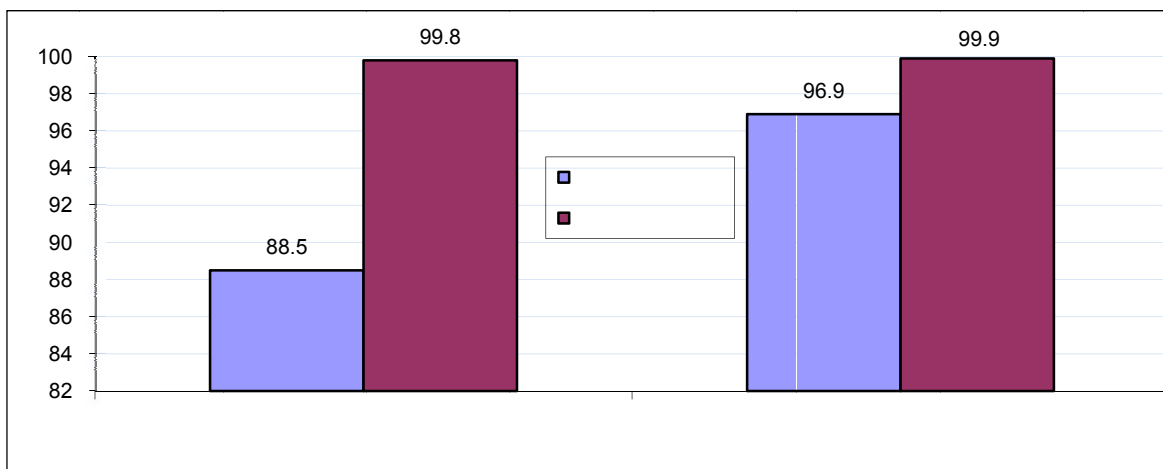
%96.9

%88.5

%99.9

%99.8

**2010**



- .2010 .2011 :

<b>2010</b>	<b>%54.4</b>
-------------	--------------

2010

%45.3

%18.0

%59.5

%40.1)

%54.4

.( %81.9

:(<sup>2</sup>)

%14.1

( ) 80

( ) 200

%7.2 %12.2 %8.8

:

<b>2010</b>
-------------

%29.6

%21.9

%97.1 %96.7

%7.0

%95.9

.%94.3

**2010**

7.0	29.6	<b>21.9</b>	
96.9	97.5	<b>97.3</b>	
95.9	97.1	<b>96.7</b>	
60.7	71.2	<b>67.6</b>	
99.5	99.5	<b>99.5</b>	
94.8	95.9	<b>95.5</b>	
0.8	3.8	<b>2.8</b>	
95.3	93.8	<b>94.3</b>	

- .2010 .2010 :



:

: ( ) .

:

:( )

( ) ( ) ( )

:

:

:

:

:

:

( ) ( )

:

:

( )

:

:  
1000

:  
1000

:

:  
1000

:  
1000

:

15

:

:

:

( )

:

( )

:

:



:

:( )

:

( )

:

:

( 35)

:

.( )

( )

:

( )

:

:

.1997

( )

)

)

(" "

(" "

)

.(

:

:

:

:

:

:

:

:

10

:

.

:

:

:

( )

( )

( )

( )

:

:

:

...

:

( )

:

:

:

:

...

:

:

: /

:

( )

:

/

15

2

:

:

:

:

/

:

/

:( )

:

:

:

:

:

:

:

.( ... )

:

:

:

:

:

( -

:

- )

