



2010

2011 /

2006

.2011 - 1432 ©

:

: 2010 - .2011

:

- 1647 . .

(970/972) 2 2982700 :

(970/972) 2 2982710 :

1800300300 :

diwan@pcbs.gov.ps :

http://www.pcbs.gov.ps :



.

2010

-

(PNA)

2011 (CFG)

.(SDC)

(CFG)

•

•

•

•

•

•

•

•

.1993

:SNA93

()

:ISIC-3

15

17

17

17

21

22

22

25

26

27

27

27

27

28

29

30

30

31

31

31

33

35

2009

1.1

2.1

3.1

4.1

5.1

6.1

7.1

1.2

2.2

3.2

4.2

5.2

6.2

7.2

8.2

9.2

10.2

:

:

:

37		:1
	.2010	
38		:2
	.2010	
39		:3
	.2010	
40		:4
	.2010	
41		:5
	.2010	
42		:6
	.2010	
43		:7
	.2010	
44		:8
	.2010	
45		:9
	.2010	

1995

-

:

-

:

1995

1996

-

()

2010

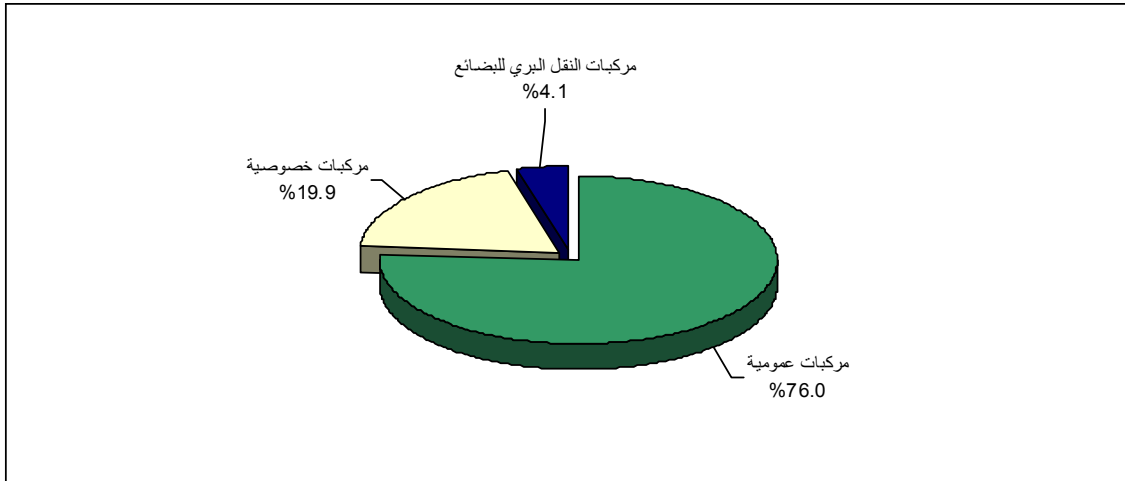
-

2011

1.1

	2010	-
	2,604	10,945
	%76.0	
	.%4.1	%19.9

2010

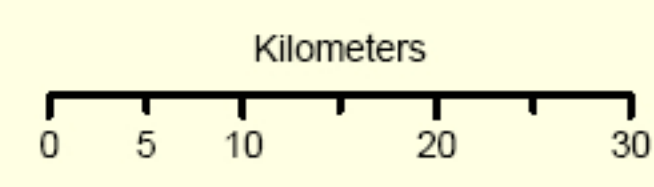
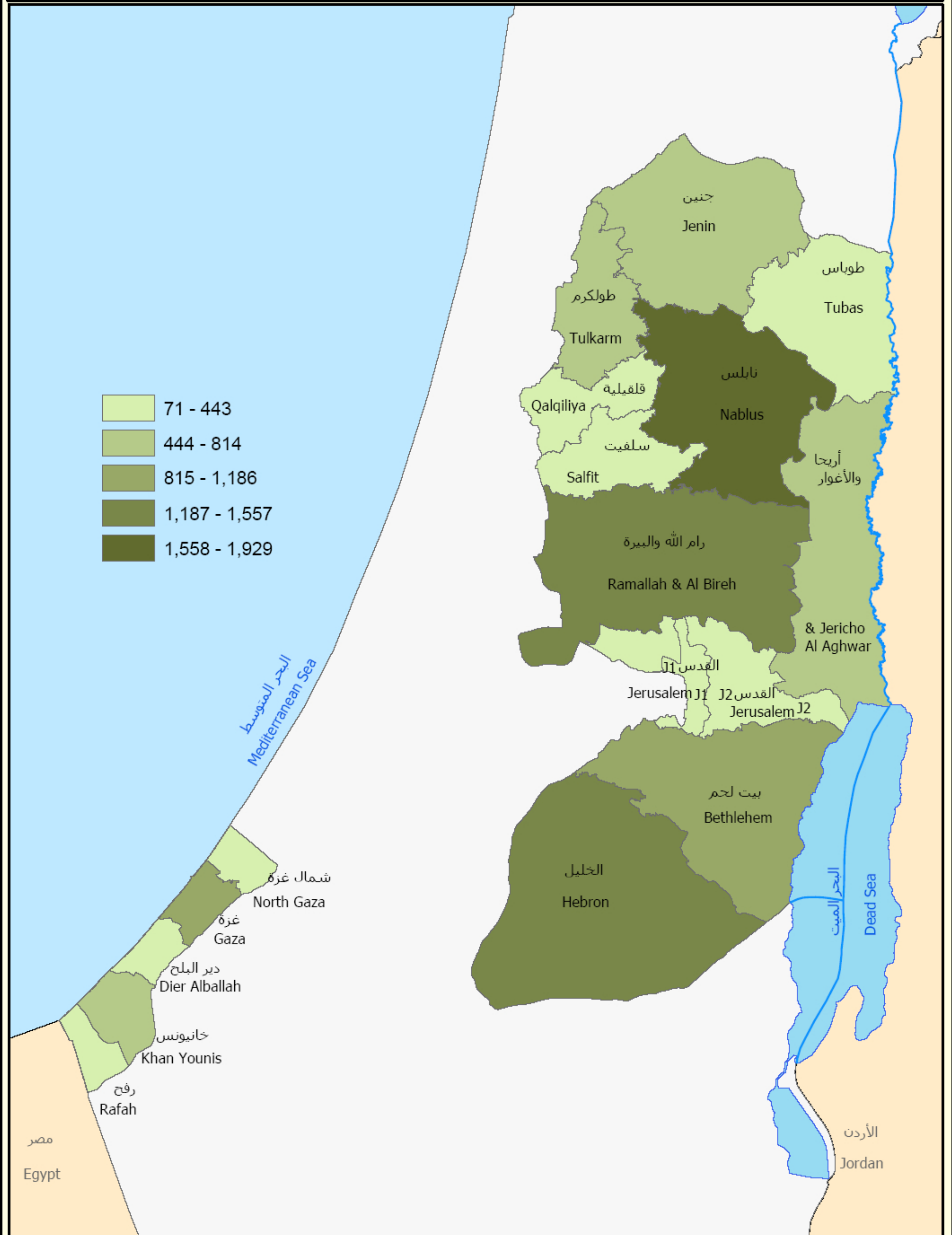


2.1

8,696	11,535	
%75.5		
		%4.0
		2,839
		%20.5

عدد المركبات في قطاع النقل خارج المنشآت في الأراضي الفلسطينية حسب المحافظة، 2010

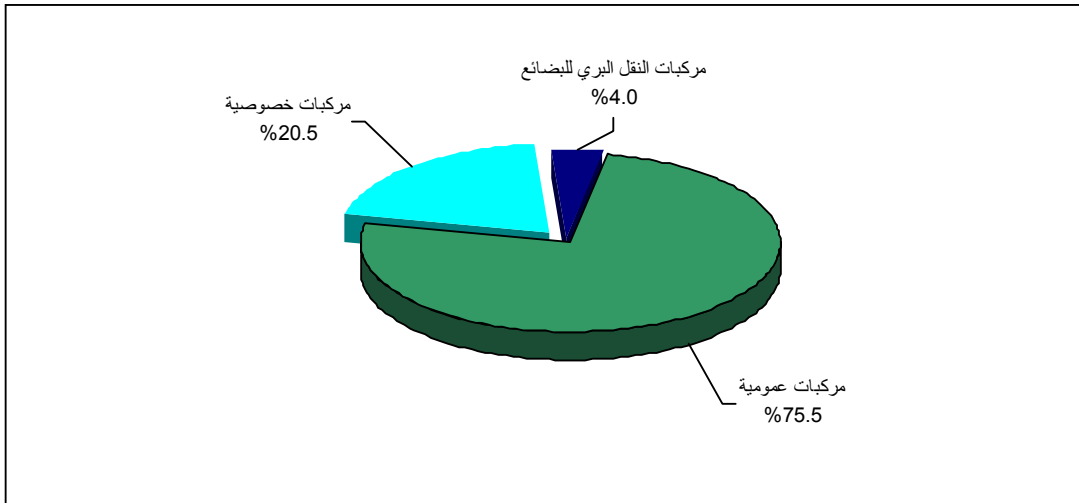
Number of Vehicles in Transport- Out Side Establishment Sector in the Palestinian Territory by Governorate, 2010



المصدر: الجهاز المركزي للإحصاء الفلسطيني، 2011
 Source: Palestinian Central Bureau of Statistics, 2011



2010



%69.8

%30.2

3.1

14.4

17.0

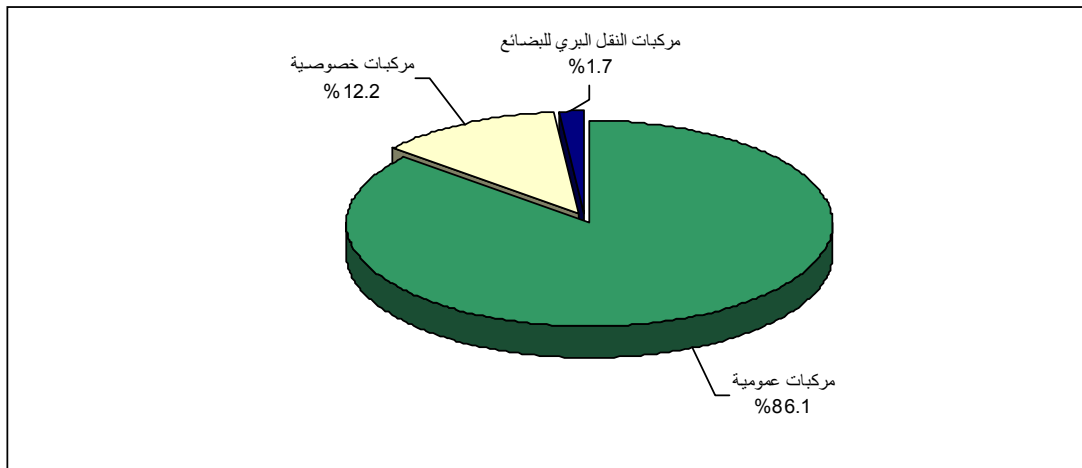
2.6

%12.2

%86.1

.%1.7

2010



4.1

241.5

22.6

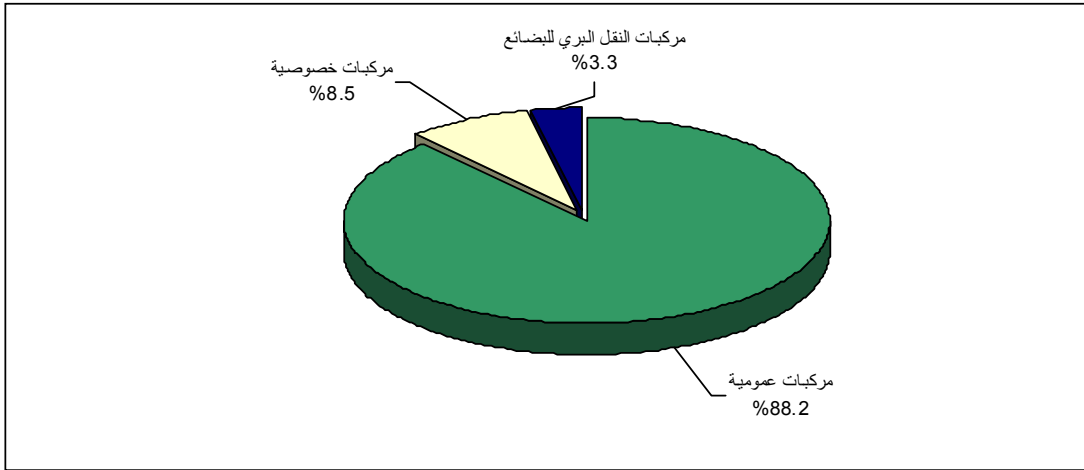
218.9

%88.2

.%3.3

%8.5

2010



5.1

129.5

14.3

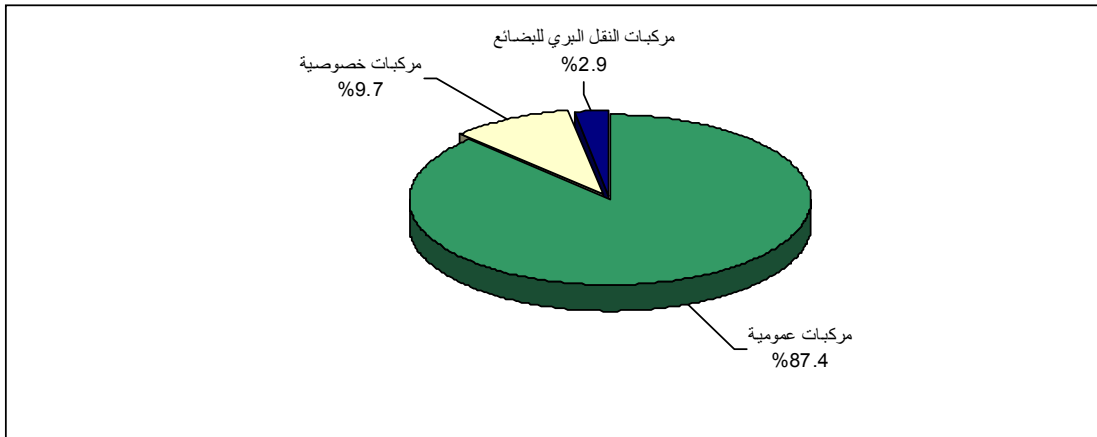
115.2

%9.7

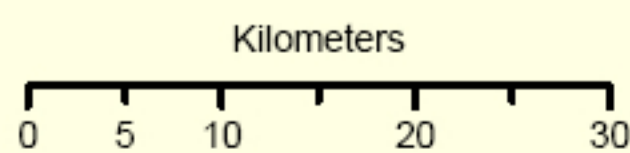
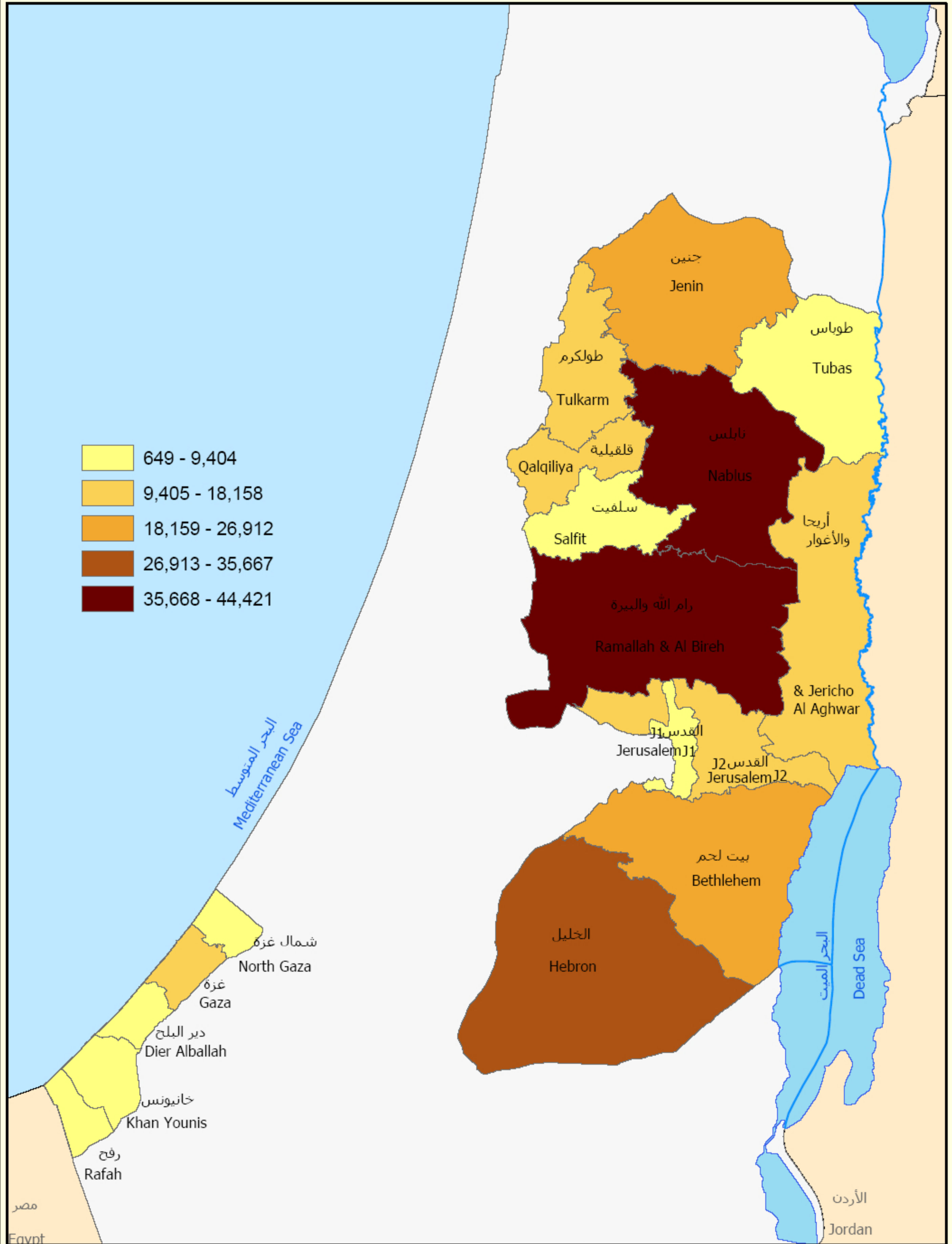
%87.4

.%2.9

2010



قيمة الانتاج بالالف دولار امريكي في قطاع النقل خارج المنشآت
 في الاراضي الفلسطينية حسب المحافظة، 2010
 Output Value in Thousand US \$ in Transport- Out Side Establishment Sector
 in the Palestinian Territory by Governorate, 2010



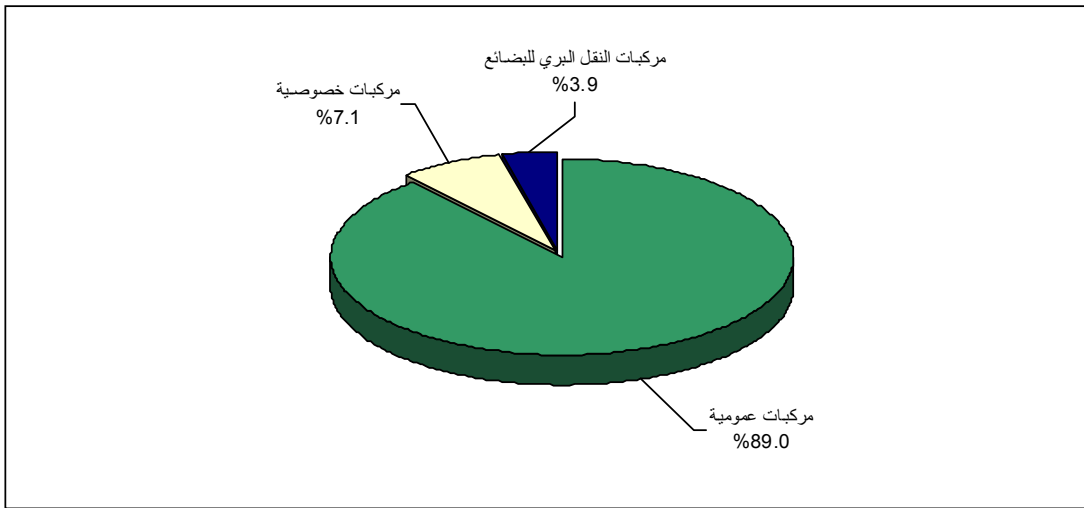
المصدر: الجهاز المركزي للإحصاء الفلسطيني، 2011
 Source: Palestinian Central Bureau of Statistics, 2011



6.1

112.0
 8.3
 103.7
 %89.0
 %7.1
 %3.9

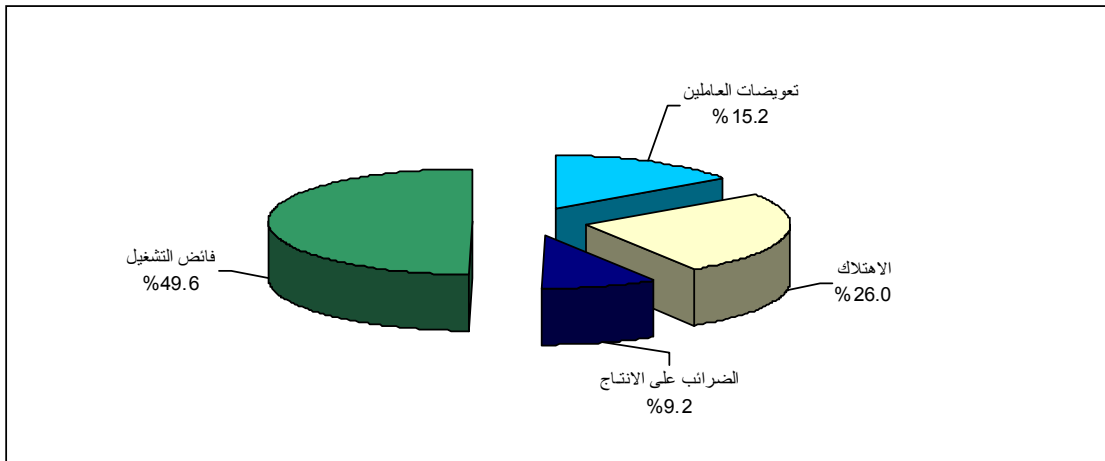
2010



2010

17.0
 29.1
 10.3
 55.6

2010



2009 7.1

2009 2010
 %7.1 %6.8
 . %1.0 %1.4 %6.4

()

السنة								
2010	2009	2008	2007	2006	2005	2004	2003	
10,945	10,791	10,189	10,087	11,337	11,327	11,144	10,434	
11,535	11,656	10,846	10,919	11,837	12,072	11,866	11,424	
17.0	16.9	9.3	11.3	7.4	5.9	5.6	3.9	
241.5	226.2	177.5	170.8	168.3	162.6	129.6	132.3	
129.5	120.9	97.7	93.5	86.7	84.5	63.0	60.1	
112.0	105.3	79.8	77.3	81.6	78.1	66.6	72.3	

1.2

:

-

-

.1

.2

.3

()

.4

.5

.6

2.2

-

3.2

•

-

(ISIC-3)

:

.(6022)

.1

.(6023)

.2

•

:

:

-

8,319

:

-

2,178

:

-

448

5) (

(36 -3)

37

.1

.2

.3

.4

	2001	2000	2001	2000	2001	2000	
10,945	63	385	425	1,753	6,287	2,032	
1,731	24	126	103	250	881	347	

4.2

()

(Sample Size) .1

: .2

:(Sample Design) .3
 :(Stratum Rate) .4

	%95					
1,731	11,761	11,307	0.010	115.6	11,535	
1,731	18,993	15,024	0.059	1011.6	17,008	
1,731	247,058	235,992	0.012	2,820.0	241,525	
1,731	132,312	126,787	0.011	1,407.8	,550129	
1,731	115,449	108,500	0.016	1,770.9	111,975	

5.2

•

•

•

•

6.2

•

•

•

:

:

:

:

7.2

:

1,731

•

63

•

.%96.4

•

.%3.6

•

8.2

•

:

•

() ()

9.2

1993

(ISIC-3)

(SNA93)

10.2

:

.1

()

.2

.3

:

•

:2010

3.7315 = /

0.7090 = /

:

:

:

)

(

:

:

:()

() 9

()

:

Tables

2010

:1

Table 1: Number of Vehicles, Employed Persons and Main Economic Indicators in Transport- Outside Establishments Sector in the Palestinian Territory by Economic Activity and Region, 2010

(Value in US \$ 1000)

()

Region and Economic Activity	Total Value Added	Intermediate Consumption	Output			عدد العاملين No. Of Employed Persons	No. of Vehicles		ISIC
			External revenue	Internal revenue	Total				
Palestinian Territory	111974.9	129549.9	0.0	241524.8	241524.8	11535	10945		
Other non-scheduled passenger transport	107645.5	125776.4	0.0	233421.9	233421.9	11078	10497	الأراضي الفلسطينية	6022
Public Vehicles	99741.3	113170.4	0.0	212911.7	212911.7	8714	8319		
Private Vehicles	7904.2	12606.0	0.0	20510.2	20510.2	2364	2178		
Freight transport by road	4329.4	3773.5	0.0	8102.9	8102.9	457	448		6023
West Bank	103650.5	115249.4	0.0	218899.9	218899.9	8696	8341		
Other non-scheduled passenger transport	99543.6	111729.1	0.0	211272.7	211272.7	8284	7933	الضفة الغربية	6022
Public Vehicles	96837.4	108177.8	0.0	205015.2	205015.2	7840	7492		
Private Vehicles	2706.2	3551.3	0.0	6257.5	6257.5	444	441		
Freight transport by road	4106.9	3520.3	0.0	7627.2	7627.2	412	408		6023
Gaza Strip	8324.4	14300.5	0.0	22624.9	22624.9	2839	2604		
Other non-scheduled passenger transport	8101.9	14047.3	0.0	22149.2	22149.2	2794	2564	قطاع غزة	6022
Public Vehicles	2903.9	4992.6	0.0	7896.5	7896.5	874	827		
Private Vehicles	5198.0	9054.7	0.0	14252.7	14252.7	1920	1737		
Freight transport by road	222.5	253.2	0.0	475.7	475.7	45	40		6023

2010

:2

Table 2: Number of Vehicles, Employed Persons and Value Added Components in Transport- Outside Establishments Sector in the Palestinian Territory by Economic Activity and Region, 2010

(Value in US \$ 1000) ()

Region and Economic Activity	Components of Value Added				Gross Value Added	No. of Employed Persons	No. of Vehicles	ISIC
	Operating Surplus	depreciation	صافي الرسوم والضرائب على الإنتاج * Net fees and Taxes*	compensation of Employees				
Palestinian Territory	55563.0	29058.0	10345.3	17008.6	111974.9	11535	10945	
Other non-scheduled passenger transport	52478.7	28350.6	10088.5	16727.7	107645.5	11078	10497	6022
Public Vehicles	50078.3	25806.3	9208.4	14648.3	99741.3	8714	8319	
Private Vehicles	2400.4	2544.3	880.1	2079.4	7904.2	2364	2178	
Freight transport by road	3084.3	707.4	256.8	280.9	4329.4	457	448	6023
West Bank	55141.3	25347.9	8760.4	14400.9	103650.5	8696	8341	الضفة الغربية
Other non-scheduled passenger transport	52218.3	24666.0	8526.2	14133.1	99543.6	8284	7933	6022
Public Vehicles	50074.1	24241.4	8439.3	14082.6	96837.4	7840	7492	
Private Vehicles	2144.2	424.6	86.9	50.5	2706.2	444	441	
Freight transport by road	2923.0	681.9	234.2	267.8	4106.9	412	408	6023
Gaza Strip	421.7	3710.1	1584.9	2607.7	8324.4	2839	2604	
Other non-scheduled passenger transport	260.4	3684.6	1562.3	2594.6	8101.9	2794	2564	6022
Public Vehicles	4.2	1564.9	769.1	565.7	2903.9	874	827	
Private Vehicles	256.2	2119.7	793.2	2028.9	5198.0	1920	1737	
Freight transport by road	161.3	25.5	22.6	13.1	222.5	45	40	6023

*Excluded customs duties

*

جدول 3: عدد المركبات والعاملين وتعويضات المستخدمين بأجر في قطاع النقل خارج المنشآت في الأراضي الفلسطينية حسب النشاط الاقتصادي والمنطقة، 2010

Table 3: Number of Vehicles, Employment Persons and Compensations of Paid Employees in Transport- Outside Establishments Sector in the Palestinian Territory by Economic Activity and Region, 2010

(Value in US \$ 1000)

(القيمة بالآلاف دولار أمريكي)

Region and Economic Activity	التعويضات Compensations			مجموع التعويضات Total Compensations	عدد العاملين No. of Employed Persons			عدد المركبات No. of Vehicles	المنطقة والنشاط الاقتصادي	ISIC
	المزايا الأخرى Other Benefits	المزايا العينية Payments in Kind	الرواتب والأجور Cash Wages and Salaries		العاملون بدون أجر Unpaid Employment	المستخدمون بأجر Wages Employees	المجموع Total			
Palestinian Territory	79.0	1220.1	15709.5	17008.6	8046	3489	11535	10945	الأراضي الفلسطينية	
Other non-scheduled passenger transport	79.0	1219.5	15429.2	16727.7	7641	3437	11078	10497	أنواع النقل البري الأخرى للركاب غير المحددة بموعد	6022
Public Vehicles	79.0	1140.5	13428.8	14648.3	5855	2859	8714	8319	مركبات نقل ركاب عمومية	
Private Vehicles	0.0	79.0	2000.4	2079.4	1786	578	2364	2178	مركبات نقل ركاب خصوصية	
Freight transport by road	0.0	0.6	280.3	280.9	405	52	457	448	النقل البري للبضائع	6023
West Bank	79.0	1082.4	13239.5	14400.9	6012	2684	8696	8341	الضفة الغربية	
Other non-scheduled passenger transport	79.0	1082.3	12971.8	14133.1	5647	2637	8284	7933	أنواع النقل البري الأخرى للركاب غير المحددة بموعد	6022
Public Vehicles	79.0	1069.6	12934.0	14082.6	5213	2627	7840	7492	مركبات نقل ركاب عمومية	
Private Vehicles	0.0	12.7	37.8	50.5	434	10	444	441	مركبات نقل ركاب خصوصية	
Freight transport by road	0.0	0.1	267.7	267.8	365	47	412	408	النقل البري للبضائع	6023
Gaza Strip	0.0	137.7	2470.0	2607.7	2034	805	2839	2604	قطاع غزة	
Other non-scheduled passenger transport	0.0	137.2	2457.4	2594.6	1994	800	2794	2564	أنواع النقل البري الأخرى للركاب غير المحددة بموعد	6022
Public Vehicles	0.0	70.9	494.8	565.7	642	232	874	827	مركبات نقل ركاب عمومية	
Private Vehicles	0.0	66.3	1962.6	2028.9	1352	568	1920	1737	مركبات نقل ركاب خصوصية	
Freight transport by road	0.0	0.5	12.6	13.1	40	5	45	40	النقل البري للبضائع	6023

2010

:4

Table 4: Fixed Assets in Transport- Outside Establishments Sector in the Palestinian Territory by Economic Activity and Region, 2010

(Value in US \$ 1000)

()

Region and Economic Activity	Closing Book Value	Annual Depreciation	Sold Assets	Written off and Losses	Value of Gross Additions					Opening Book Value	No. of Vehicles	ISIC
					Capital Improvements	Purchased Assets			Total			
						Directly Imported	Local					
							Second Hand	New Assets				
Palestinian Territory	175396.9	29058.0	7.3	10.2	7565.0	1877.9	37790.6	16859.9	64093.4	140379.0	10945	
Other non-scheduled passenger transport	171843.2	28350.6	7.3	10.2	7312.1	1872.0	36504.6	16480.4	62169.1	138042.2	10497	6022
Freight transport by road	3553.7	707.4	0.0	0.0	252.9	5.9	1286.0	379.5	1924.3	2336.8	448	6023
West Bank	152106.3	25347.9	1.8	1.6	3821.8	1865.3	27971.6	16768.4	50427.1	127030.5	8341	
Other non-scheduled passenger transport	148779.5	24666.0	1.8	1.6	3581.1	1859.4	26829.9	16388.9	48659.3	124789.6	7933	6022
Freight transport by road	3326.8	681.9	0.0	0.0	240.7	5.9	1141.7	379.5	1767.8	2240.9	408	6023
Gaza Strip	23290.6	3710.1	5.5	8.6	3743.2	12.6	9819.0	91.5	13666.3	13348.5	2604	
Other non-scheduled passenger transport	23063.7	3684.6	5.5	8.6	3731.0	12.6	9674.7	91.5	13509.8	13252.6	2564	6022
Freight transport by road	226.9	25.5	0.0	0.0	12.2	0.0	144.3	0.0	156.5	95.9	40	6023

جدول 5: حركة الأصول الثابتة في قطاع النقل خارج المنشآت في الأراضي الفلسطينية حسب صنف الأصل والمنطقة، 2010

Table 5: Fixed Assets in Transport- Outside Establishments Sector in the Palestinian Territory by Type of Asset and Region, 2010

(Value in US \$ 1000)

(القيمة بالآلاف دولار أمريكي)

Region and Type of Asset	القيمة الدفترية في نهاية العام Closing Book Value	الاهتلاك خلال العام Annual Depreciation	الأصول المباعة خلال العام Sold Assets	التالف والمفقود Written Off and Losses	إضافات وتحسينات رأسمالية Capital Additions and Improvements	Purchased Assets قيمة الأصول المشتراة خلال العام			القيمة الدفترية في بداية العام Opening Book Value	المنطقة وصنف الأصل
						مستورد مباشرة Directly Imported	محلي Local			
							مستعملة SecondHand	جديدة New		
Palestinian Territory	175396.9	29058.0	7.3	10.2	7565.0	1877.9	37790.6	16859.9	140379.0	الأراضي الفلسطينية
Vehicles	175396.9	29058.0	7.3	10.2	7565.0	1877.9	37790.6	16859.9	140379.0	مركبات النقل
Machines and Equipments	0.0	0.0	0.0	0.0	0.0	0.0	0.0	0.0	0.0	الألات والمعدات
West Bank	152106.3	25347.9	1.8	1.6	3821.8	1865.3	27971.6	16768.4	127030.5	الضفة الغربية
Vehicles	152106.3	25347.9	1.8	1.6	3821.8	1865.3	27971.6	16768.4	127030.5	مركبات النقل
Machines and Equipments	0.0	0.0	0.0	0.0	0.0	0.0	0.0	0.0	0.0	الألات والمعدات
Gaza Strip	23290.6	3710.1	5.5	8.6	3743.2	12.6	9819.0	91.5	13348.5	قطاع غزة
Vehicles	23290.6	3710.1	5.5	8.6	3743.2	12.6	9819.0	91.5	13348.5	مركبات النقل
Machines and Equipments	0.0	0.0	0.0	0.0	0.0	0.0	0.0	0.0	0.0	الألات والمعدات

جدول 6: مستلزمات الإنتاج السلعية المستخدمة في قطاع النقل خارج المنشآت في الأراضي الفلسطينية حسب النشاط الاقتصادي والمنطقة، 2010

Table 6: Production Inputs of Goods in Transport- Outside Establishments Sector in the Palestinian Territory by Economic Activity and Region, 2010

(Value in US \$ 1000)

(القيمة بالالف دولار أمريكي)

Region and Economic Activity	other	عدد أدوات مستهلكة Disposables	قطع غيار واطارات مستعملة Used Spare Parts and Tires	قطع غيار جديدة New Spare Parts	إطارات جديدة New Tires	الوقود والمحروقات والزيت Fuel and Oil	مجموع مستلزمات الإنتاج السلعية المستخدمة Total Input of Goods	المنطقة والنشاط الاقتصادي	ISIC
Palestinian Territory	3.3	130.7	1449.1	4821.2	3792.0	108455.2	118651.5	الأراضي الفلسطينية	
Other non-scheduled passenger transport	1.9	126.5	1375.4	4659.2	3614.6	105231.7	115009.3	أنواع النقل البري الأخرى للركاب غير المحددة بموعد	6022
Public Vehicles	1.6	85.7	1074.8	3888.4	3028.2	95819.6	103898.3	مركبات نقل ركاب عمومية	
Private Vehicles	0.3	40.8	300.6	770.8	586.4	9412.1	11111.0	مركبات نقل ركاب خصوصية	
Freight transport by road	1.4	4.2	73.7.0	162.0	177.4	3223.5	3642.2	النقل البري للبضائع	6023
West Bank	2.2	85.1	1221.0	3767.8	2872.4	98559.3	106507.8	الضفة الغربية	
Other non-scheduled passenger transport	0.8	81.4	1147.6	3637.4	2733.7	95502.4	103103.3	أنواع النقل البري الأخرى للركاب غير المحددة بموعد	6022
Public Vehicles	0.8	72.9	1003.8	3518.1	2693.6	92367.6	99656.8	مركبات نقل ركاب عمومية	
Private Vehicles	0.0	8.5	143.8	119.3	40.1	3134.8	3446.5	مركبات نقل ركاب خصوصية	
Freight transport by road	1.4	3.7	73.4	130.4	138.7	3056.9	3404.5	النقل البري للبضائع	6023
Gaza Strip	1.1	45.6	228.1	1053.4	919.6	9895.9	12143.7	قطاع غزة	
Other non-scheduled passenger transport	1.1	45.1	227.8	1021.8	880.9	9729.3	11906.0	أنواع النقل البري الأخرى للركاب غير المحددة بموعد	6022
Public Vehicles	0.8	12.8	71.0	370.3	334.6	3452.0	4241.5	مركبات نقل ركاب عمومية	
Private Vehicles	0.3	32.3	156.8	651.5	546.3	6277.3	7664.5	مركبات نقل ركاب خصوصية	
Freight transport by road	0.0	0.5	0.3	31.6	38.7	166.6	237.7	النقل البري للبضائع	6023

جدول 7: مصاريف الخدمات في قطاع النقل خارج المنشآت في الأراضي الفلسطينية حسب النشاط الاقتصادي والمنطقة، 2010

Table 7: Services Expenditures in Transport- Outside Establishments Sector in the Palestinian Territory by Economic Activity and Region, 2010

(Value in US \$ 1000)

(القيمة بالالف دولار امريكي)

Region and Economic Activity	أخرى Other	أقساط تأمين* Insurance Premiums*	عمولات مدفوعة للمكاتب fees to taxi Officies	رسوم اتحادات ونقابات Union Fees	معالجة طبية medical treatment	سفرات وتنقلات رسمية official travel	خدمات نقل مقدمة من الغير Transport Services	استئجار آلات ومعدات Rent of Mach & Equip.	صيانة وإصلاح Maintenance	المجموع Total	المنطقة والنشاط الاقتصادي	ISIC
Palestinian Territory	59.9	6441.3	6282.5	40.8	85.3	83.5	99.7	478.4	3768.2	17339.6	الأراضي الفلسطينية	
Other non-scheduled passenger transport	59.9	6127.5	6279.1	40.6	74.6	80.2	95.8	477.9	3658.7	16894.3	أنواع النقل البري الأخرى للركاب غير المحددة بموعد	6022
Public Vehicles	58.8	5893.4	5672.6	40.6	24.4	53.4	80.9	375.4	2965.7	15165.2	مركبات نقل ركاب عمومية	
Private Vehicles	1.1	234.1	606.5	0.0	50.2	26.8	14.9	102.5	693.0	1729.1	مركبات نقل ركاب خصوصية	
Freight transport by road	0.0	313.8	3.4	0.2	10.7	3.3	3.9	0.5	109.5	445.3	النقل البري للبضائع	6023
West Bank	54.9	6218.0	5478.2	40.6	33.1	54.2	81.4	216.0	2782.9	14959.3	الضفة الغربية	
Other non-scheduled passenger transport	54.9	5904.6	5474.8	40.4	22.4	51.2	77.9	216.0	2687.9	14530.1	أنواع النقل البري الأخرى للركاب غير المحددة بموعد	6022
Public Vehicles	54.9	5755.5	5461.5	40.4	21.2	44.3	72.8	216.0	2609.7	14276.3	مركبات نقل ركاب عمومية	
Private Vehicles	0.0	149.1	13.3	0.0	1.2	6.9	5.1	0.0	78.2	253.8	مركبات نقل ركاب خصوصية	
Freight transport by road	0.0	313.4	3.4	0.2	10.7	3.0	3.5	0.0	95.0	429.2	النقل البري للبضائع	6023
Gaza Strip	5.0	223.3	804.3	0.2	52.2	29.3	18.3	262.4	985.3	2380.3	قطاع غزة	
Other non-scheduled passenger transport	5.0	222.9	804.3	0.2	52.2	29.0	17.9	261.9	970.8	2364.2	أنواع النقل البري الأخرى للركاب غير المحددة بموعد	6022
Public Vehicles	3.9	137.9	211.1	0.2	3.2	9.1	8.1	159.4	356.0	888.9	مركبات نقل ركاب عمومية	
Private Vehicles	1.1	85.0	593.2	0.0	49.0	19.9	9.8	102.5	614.8	1475.3	مركبات نقل ركاب خصوصية	
Freight transport by road	0.0	0.4	0.0	0.0	0.0	0.3	0.4	0.5	14.5	16.1	النقل البري للبضائع	6023

*Intermediate consumption excluded insurance premiums

*الإستهلاك الوسيط لا يشمل أقساط التأمين

جدول 8: الرسوم والضرائب على الإنتاج في قطاع النقل خارج المنشآت في الأراضي الفلسطينية حسب النشاط الاقتصادي والمنطقة، 2010

**Table 8: Fees and Taxes on Production in Transport- Outside Establishments Sector in the Palestinian Territory
by Economic Activity and Region, 2010**

Region and Economic Activity	ضرائب أخرى Other Taxes	رسوم الخط Customs Permit	ضريبة القيمة المضافة Value Added Tax	رسوم طوابع Stamp Fees	رسوم ترخيص مركبات Vehicle Licensing Fees	رسوم جمركية Customs Duties	المجموع Total	عدد المركبات No. of Vehicles	المنطقة والنشاط الاقتصادي	ISIC
Palestinian Territory	86.7	4711.9	2905.5	150.9	2490.3	21.0	10366.3	10945	الأراضي الفلسطينية	
Other non-scheduled passenger transport	83.7	4709.1	2799.7	144.4	2351.7	21.0	10109.6	10497	أنواع النقل البري الأخرى للركاب غير المحددة بموعد	6022
Freight transport by road	3.0	2.8	105.8	6.5	138.6	0.0	256.7	448	النقل البري للبضائع	6023
West Bank	84.2	4461.4	2558.0	139.8	1517.0	4.4	8764.8	8341	الضفة الغربية	
Other non-scheduled passenger transport	81.2	4458.6	2462.5	133.7	1390.2	4.4	8530.6	7933	أنواع النقل البري الأخرى للركاب غير المحددة بموعد	6022
Freight transport by road	3.0	2.8	95.5	6.1	126.8	0.0	234.2	408	النقل البري للبضائع	6023
Gaza Strip	2.5	250.5	347.5	11.1	973.3	16.6	1601.5	2604	قطاع غزة	
Other non-scheduled passenger transport	2.5	250.5	337.2	10.7	961.5	16.6	1579.0	2564	أنواع النقل البري الأخرى للركاب غير المحددة بموعد	6022
Freight transport by road	0.0	0.0	10.3	0.4	11.8	0.0	22.5	40	النقل البري للبضائع	6023

جدول 9: بعض المعدلات المستخلصة من المسح في قطاع النقل خارج المنشآت في الأراضي الفلسطينية حسب النشاط الاقتصادي والمنطقة، 2010

Table 9: Selected Ratios in Transport- Outside Establishments Sector in the Palestinian Territory by Economic Activity and Region, 2010

Region and Economic Activity	نسبة الاهتلاك السنوي الى الإنتاج Depreciation to Output %	نسبة تعويضات العاملين الى القيمة المضافة Compensation of Employees to Value Added %	نسبة القيمة المضافة الى الإنتاج Value Added to Output %	نصيب المستخدم بأجر من من القيمة المضافة بالدولار Value Added per wage Employees in (\$)	نصيب العامل من القيمة المضافة بالدولار Value Added per Employed in (\$)	نصيب المستخدم بأجر من الإنتاج بالدولار Output per wage Employees in (\$)	نصيب العامل من الإنتاج بالدولار Output per Employed in (\$)	نصيب المستخدم بأجر من تعويضات العاملين بالدولار Annual Compensation per wage Employees in(\$)	المنطقة والنشاط الاقتصادي	ISIC
Palestinian Territory	12.0	15.2	46.4	32093.7	9707.4	69224.6	20938.4	4874.9	الأراضي الفلسطينية	
Other non-scheduled passenger transport	12.1	15.5	46.1	31328.7	9715.3	67934.2	21067.0	4868.4	أنواع النقل البري الأخرى للركاب غير المحددة بموعد	6022
Freight transport by road	8.7	6.5	53.4	83257.7	9473.5	155825.0	17730.6	5401.9	النقل البري للبضائع	6023
West Bank	11.6	13.9	47.4	38617.9	11919.3	81557.3	25172.5	5365.4	الضفة الغربية	
Other non-scheduled passenger transport	11.7	14.2	47.1	37748.8	12016.4	80118.6	25503.7	5359.5	أنواع النقل البري الأخرى للركاب غير المحددة بموعد	6022
Freight transport by road	8.9	6.5	53.8	87380.9	9968.2	162280.9	18512.6	5695.7	النقل البري للبضائع	6023
Gaza Strip	16.4	31.3	36.8	10340.9	2932.2	28105.5	7969.3	3239.4	قطاع غزة	
Other non-scheduled passenger transport	16.6	32.0	36.6	10127.4	2899.7	27686.5	7927.4	3243.2	أنواع النقل البري الأخرى للركاب غير المحددة بموعد	6022
Freight transport by road	5.4	5.9	46.8	44500.0	4944.4	95140.0	10571.1	2620.0	النقل البري للبضائع	6023



Palestinian National Authority Palestinian Central Bureau of Statistics

Transport Survey: Outside Establishments Sector 2010 Main Results

**Issue No. 15
June, 2011**

PAGE NUMBERS OF ENGLISH TEXT ARE PRINTED IN SQUARE BRACKETS.
TABLES ARE PRINTED IN THE ARABIC ORDER (FROM RIGHT TO LEFT)

This document is prepared in accordance with the standard procedures stated in the Code of Practice for Palestine Official Statistics 2006

©June, 2011

All rights reserved.

Suggested Citation:

Palestinian Central Bureau of Statistics 2011, *Transport Survey: Outside Establishments Sector 2010, Main Results.* Ramallah - Palestine.

All correspondence should be directed to:

Palestinian Central Bureau of Statistics

P.O. Box 1647, Ramallah – Palestine

Tel: (972/970) 2 2982700

Fax: (972/970) 2 2982710

Toll free: 1800300300

E-Mail :diwan@pcbs.gov.ps

Web Site: <http://www.pcbs.gov.ps>

Acknowledgment

The Palestinian Central Bureau of Statistics (PCBS) extends its deep appreciations to all owners and drivers of vehicles, who contributed to the success of collecting the survey data and to all workers in the survey for being well dedicated in performing their duties.

The survey of the Transport: Survey-Outside Establishments Sector 2010, has been planned and conducted by a technical team from PCBS and with joint funding by the Palestinian National Authority (PNA) and the Core Funding Group (CFG), represented by the Representative Office of Norway to PNA and the Swiss Development and Cooperation Agency (SDC).

Moreover, PCBS very much appreciates the distinctive efforts of the Core Funding Group (CFG) for their valuable contribution to funding the project.

Team Work

- **Technical Committee**
Maher shami
Mohammad Serafi
Rabah Al Jamal
Laila Ghennam
Head of the Committee
- **Report Preparation**
Maher Shami
Ashwaq Sadaqa
Sameh Ahmad
- **Maps Design**
Amal Jaber
- **Graphic Design**
Ahmad Sawalmeh
- **Dissemination Standards**
Hanan Janajreh
- **Preliminary Review**
Rashad Yousef
Ibrahim Al Tarsha
Saleh Al Kafri
Jawad Al-Saleh
Mahmoud Al-Qayya
- **Final Review**
Mahmoud Jaradat
- **Overall Supervision**
Ola Awad
President of PCBS

Important notes

Abbreviations

SNA 93: System of National Accounts 1993

ISIC-3: International Standard of Industrial Classification of All Economic Activities, Version 3

Table of Contents

Subject	Page
	List of Tables
	Introduction [13]
Chapter One:	Main Findings [15]
	1.1 Number of Vehicles [15]
	1.2 Number of Employed Persons [15]
	1.3 Employees' Compensation [16]
	1.4 Output [17]
	1.5 Intermediate Consumption [17]
	1.6 Value Added [18]
	1.7 Comparison of Main Results with 2009 [19]
Chapter Two:	Methodology & Data Quality [21]
	2.1 Objectives [21]
	2.2 Questionnaire [21]
	2.3 Sample Design [21]
	2.4 Variance Calculation [21]
	2.5 Fieldwork Operations [21]
	2.6 Data Processing [22]
	2.7 Response Rate Values [22]
	2.8 Accuracy of the Data [22]
	2.9 Comparability [23]
	2.10 Notes on Data [23]
Chapter Three:	Concepts and Definitions [25]
	Tables 35

List of Tables

Table		Page
Table 1:	Number of Vehicles, Employed Persons and Main Economic Indicators in Transport- Out Side Establishments Sector in the Palestinian territory by Economic Activity and Region, 2010	37
Table 2:	Number of Vehicles, Employed Persons and Value Added Components in Transport- Outside Establishments Sector in the Palestinian territory by Economic Activity and Region, 2010	38
Table 3:	Number of Vehicles, Employed Persons and Compensations of wage Employees in Transport- Outside Establishments Sector in the Palestinian territory by Economic Activity and Region, 2010	39
Table 4:	Fixed Assets in Transport- Outside Establishments Sector in the Palestinian territory by Economic Activity and Region, 2010	40
Table 5:	Fixed Assets in Transport- Outside Establishments Sector in the Palestinian territory by Type of Assets and Region, 2010	41
Table 6:	Production Inputs of Goods in Transport - Outside Establishments Sector in the Palestinian territory by Economic Activity and Region, 2010	42
Table 7:	Services Expenditures in Transport - Outside Establishments Sector in the Palestinian territory by Economic Activity and Region, 2010	43
Table 8:	Fees and Taxes on production in Transport - Outside Establishments Sector in the Palestinian territory by Economic Activity and Region, 2010	44
Table 9:	Selected Ratios in Transport - Outside Establishments Sector in the Palestinian territory by Economic Activity and Region, 2010	45

Introduction

PCBS implemented a survey by collecting data on relevant variables pertaining to the outside establishment transport sector; Data on the outside establishment transport sector is needed for the compilation of Palestinian National Accounts and is demanded by policy makers, researchers and institutions.

The objectives of this survey are to providing the Number of transport vehicles and Employed Persons by economic activity, value of output, intermediate consumption and Fixed assets and other selected variables

The report is divided into three chapters, chapter one presents the most main findings of the survey, and chapter two discusses the quality & methodology of the fieldwork in terms of questionnaire, sample design, fieldwork operations, and coverage. In addition to that, the chapter discusses data processing and tabulation. Finally, chapter three explains the main concepts and definitions used in the report with a brief description.

PCBS is pleased to issue the fifteenth volume of the Transport Survey-Outside Establishment Sector 2010, we hopes that this report will provide national governmental organizations, non-governmental organizations, and research institutions in the Palestinian territory with the necessary statistical figures required for planning and development in the Palestinian territory.

June, 2011

**Ola Awad
President of PCBS**

Chapter One

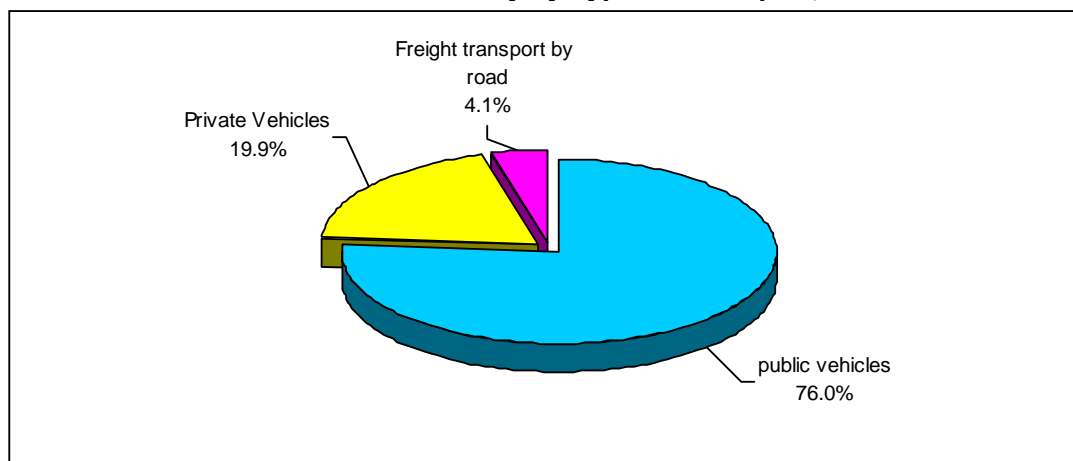
Main Findings

The main findings of the Transport Survey-Outside Establishments Sector for 2010 in the Palestinian Territory include data related to the number of operating vehicles, persons engaged, compensation of employees, output, intermediate consumption, value added, and other indicators as follows:

1.1 Number of Vehicles

The total number of operating vehicles during 2010 in the Palestinian Territory was 10,945 vehicles: 8,341 vehicles in the West Bank, 2,604 vehicles in Gaza Strip. The percentage distribution of operating vehicles shows that the majority were public vehicles (76.0%); private vehicles were (19.9%) and freight transport by road were (4.1%).

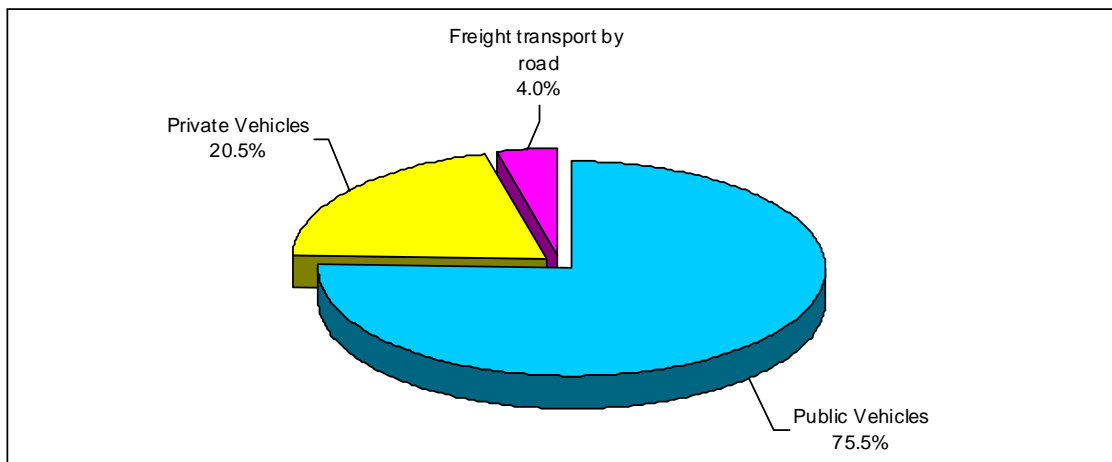
Percentage Distribution of Vehicles in Transport- Outside Establishments Sector in the Palestinian Territory by Type of Transport, 2010



1.2 Number of Employed Persons

The number of employed persons in transport in the outside establishments sector was 11,535 persons of whom 8,696 employed persons in West Bank, 2839 employed persons in Gaza Strip. This number was distributed by type of transport as follows: public vehicle activities (75.5%), private vehicle activities (20.5%), and freight transport by road (4.0%).

Percentage Distribution of Employed Persons in Transport - Outside Establishments Sector in the Palestinian Territory by Type of Transport, 2010

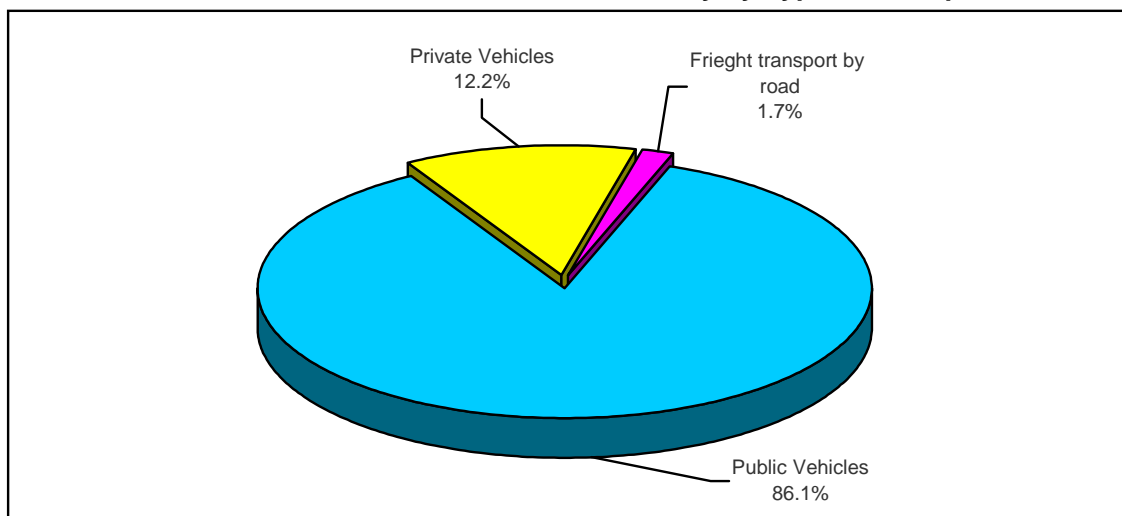


On the other hand, the distribution of employed persons by wage employee and unpaid in 2010 employment indicates that unpaid employed persons from proprietors have the highest percentage (69.8%) from the total number of employed persons, whereas waged employees reached (30.2%).

1.3 Employees Compensation

Results indicate that the value of employees compensation during 2010 in the Palestinian Territory was US\$ 17.0 million of which US\$ 14.4 million in West Bank, US\$ 2.6 million in Gaza Strip; this value was distributed by type of transport as follows: public vehicle activities (86.1%), private vehicle activities (12.2%) and freight transport by road activities (1.7%).

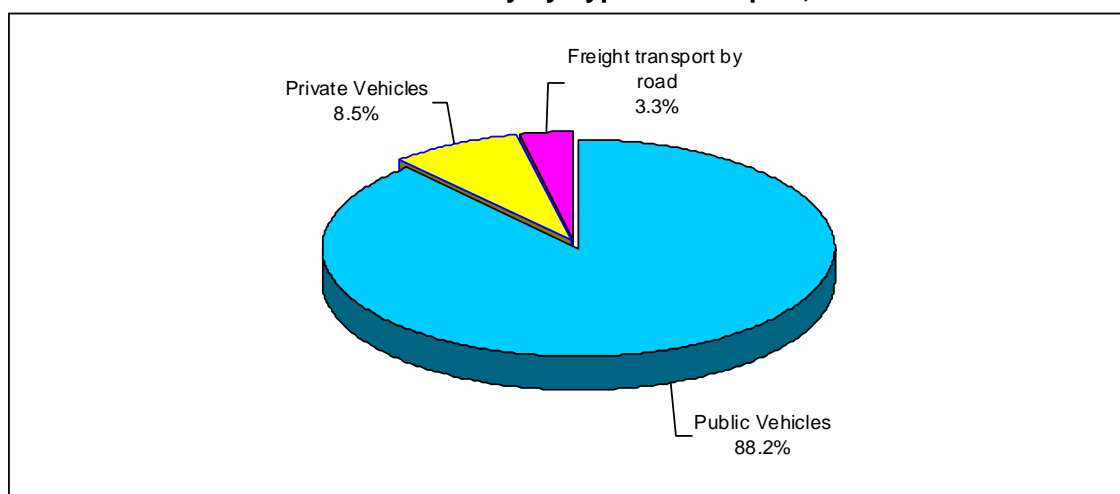
Percentage Distribution of Employees Compensation in Transport-Outside Establishments Sector in the Palestinian Territory by Type of Transport, 2010



1.4 Output

Results indicate that value of output in the Palestinian Territory was US\$ 241.5 million. This value is distributed as follows: US\$ 218.9 million in the West Bank and US\$ 22.6 million in Gaza Strip. The result shows that the majority of output was generated from public vehicle activities (88.2%), and (8.5%) from private vehicles, while (3.3%) was generated from freight transport by road.

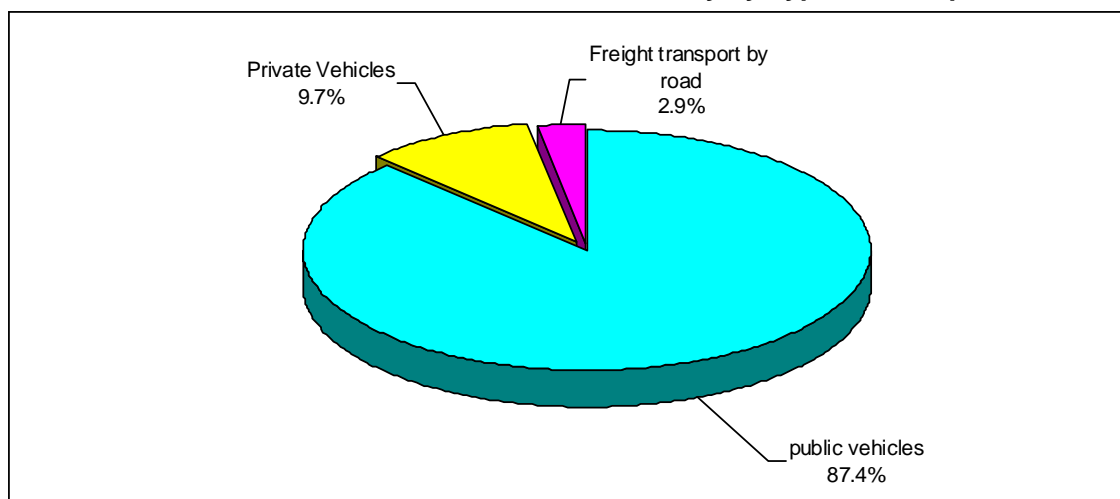
Percentage Distribution of Output in Transport - Outside Establishments Sector in the Palestinian Territory by Type of Transport, 2010



1.5 Intermediate Consumption

The survey results show that the value of intermediate consumption in the Palestinian Territory was US\$ 129.5 million of which US\$ 115.2 million in West Bank and US\$ 14.3 million in Gaza Strip. This value was distributed by type of transport as follows: public vehicle activities (87.4%), private vehicle activities (9.7%) and freight transport by road activities (2.9%).

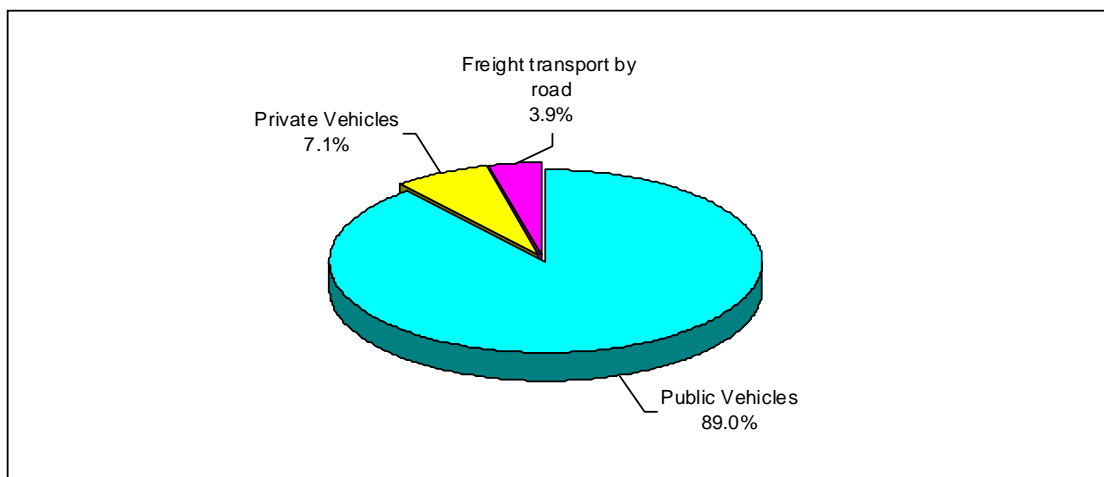
Percentage Distribution of Intermediate Consumption in Transport-Outside Establishments Sector in the Palestinian Territory by Type of Transport, 2010



1.6 Value Added

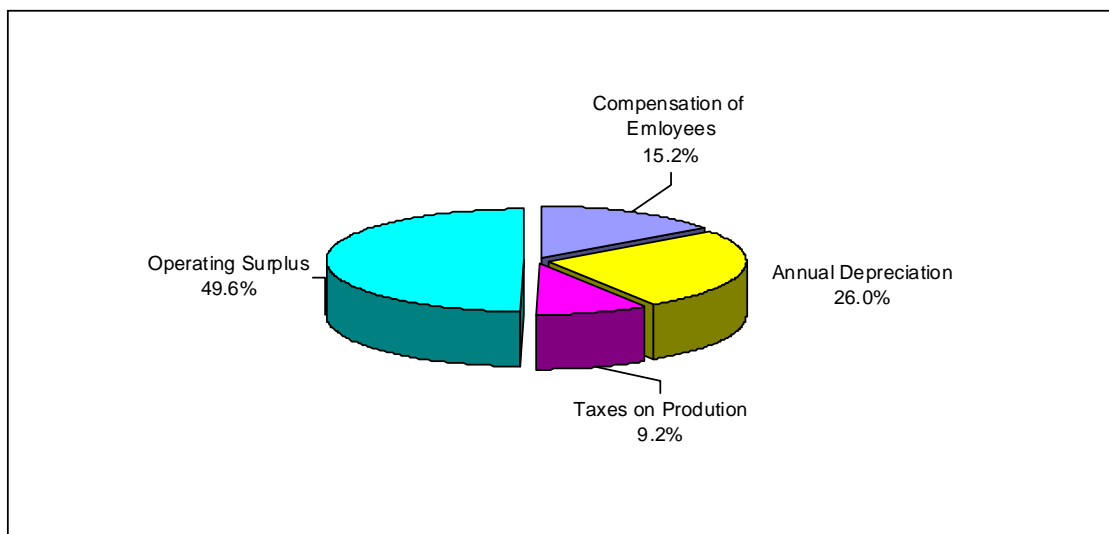
The results indicate that the value added in the Palestinian Territory was US\$ 112.0 million of which US\$ 103.7 million in West Bank, US\$ 8.3 million in Gaza Strip. This value was distributed by type of transport as follows: public vehicle activities (89.0%), private vehicle activities (7.1%), and freight transport by road activities (3.9%).

Percentage Distribution of Value Added in Transport- Out side Establishments Sector in the Palestinian Territory by Type of Transport, 2010



On the other hand, the value added was distributed by its components as follows: compensation of employees was US\$ 17.0 million, annual depreciation US\$ 29.1 million, taxes on production less subsidies US\$ 10.3 million, and operating surplus US\$ 55.6 million.

Percentage Distribution of Value Added in Transport - Outside Establishments Sector in the Palestinian Territory by Components, 2010



1.7 A Comparison of Main Results with that of 2009

The survey results show an increase by 6.8% in output value, in the value added by 6.4%, in the intermediate consumption by 7.1%, in the number of vehicles by 1.4%, and in the number of employees decreased by 1.0%

Main Economic Indicators in the Palestinian Territory by Year

Value in US \$ millions

Indicator	Year							
	2003	2004	2005	2006	2007	2008	2009	2010
Number of Vehicles	10,434	11,144	11,327	11,337	10,087	10,189	10,791	10,945
Number of Employed Persons	11,424	11,866	12,072	11,837	10,919	10,846	11,656	11,535
Compensation of Employees	3.9	5.6	5.9	7.4	11.3	9.3	16.9	17.0
Output	132.3	129.6	162.6	168.3	170.8	177.5	226.2	241.5
Intermediate Consumption	60.1	63.0	84.5	86.7	93.5	97.7	120.9	129.5
Value Added	72.3	66.6	78.1	81.6	77.3	79.8	105.3	112.0

Chapter Two

Methodology & Data Quality**2.1 Objectives of this survey**

This survey is aiming at providing the following data:

1. Number of transport vehicles and employed persons by activity.
2. Value of output and intermediate consumption.
3. Value added components.
4. Fixed assets and other selected variables.

2.2 Questionnaire

The questionnaire used for this survey took into account the main economic variables pertaining to the examined phenomenon and the needs of the compilation of National Accounts for Palestine.

2.3 Sample Design

The type of the sample is one stage stratified quota sampling and the sample allocation is proportional allocation. The sample size amounted to (1,731) vehicles out of (10,945) vehicles that comprise the survey frame.

- **Coverage**

The survey covers activities of the outside establishment sector according to (ISIC-3) for both:

- Non-scheduled passenger land transport (6022).
- Freight transport by road (6023).

2.4 Variance Calculation

Table of Variance Calculation by Palestinian Territory

Value in US \$ 1000

Variable	Estimate	Standard Error	Coefficient of Variation	95% Confidence Interval		observe
				Lower	Upper	
No. of. Employed Persons	11,535	115.6	0.010	11,307	11,761	1,731
Compensation of Employees	17,008	1011.6	0.059	15,024	18,993	1,731
Out put	241,525	2,820.0	0.012	235,992	247,058	1,731
Intermediate Consumption	129,550	1,407.8	0.011	126,787	132,312	1, 731
Value Added	111,975	1,770.9	0.016	108,500	115,449	1,731

2.5 Fieldwork Operations

Actual fieldwork activities started after the recruitment and training of qualified interviewers, who were responsible for data collection from the field.

- **Fieldwork**

1. A specialized fieldwork team was selected; the team was trained theoretically and practically on the survey questionnaire.
2. The main fieldwork team was selected according to the training course.
3. Field work visits were made by both fieldwork and project management staff for monitoring and following up data collection process and progress of work..
4. Different levels of supervision and monitoring took place according to the following division:
 1. Fieldworkers.
 2. Fieldworkers supervisors.
 3. Fieldwork coordinator. (Each has responsibilities in monitoring).
5. Project management received a daily progress report about completeness and response.
6. A follow up training course was conducted during the stage of data collection for emphasizing the main issues of training and answering questions of fieldworkers about issues faced in the field.

2.6 Data Processing

This part includes:

- Developing a data entry program and training of operators.
- Organizing data entry processes.
- Post-data entry editing.
- Tabulation

For insuring quality and consistency of data, a set of measures was taken into account for strengthening accuracy of data as follows:

- Preparing a data entry program before data collection for checking readiness of the program for data entry.
- A set of validation rules were applied on the program for checking consistency of data.
- Efficiency of the program was checked through pre-testing by entering a few questionnaires, including incorrect information, for checking its efficiency in capturing these information.
- Well-trained data keyers were selected and trained for the main data entry.

Weekly data files were received by project management for checking accuracy and consistency; notes of correction were provided for data entry management for correction

2.7 Response rate values

Sample size was 1,731 vehicles in the Palestinian Territory:

- Non-response cases: 63
- Response rate: 96.4%
- Non-response rate: 3.6%

2.8 Accuracy of the Data

• Statistical Errors

Data of this survey affected by statistical errors due to use of a sample, therefore, there are certain differences from the real values expected to be obtained through censuses. Variations

were calculated for the most important indicators and included in the report. Dissemination levels of the data were particularized at the regional level in the Palestinian Territories.

- **Non-Statistical Errors**

These types of errors could appear on one or on all of the survey stages that include data collection and data entry:

Response errors: These type of errors are related to, responders, fieldworkers, and data entry personnel. To avoid mistakes and reduce the impact, there had been a series of p that would enhance the accuracy of the data through a process of data collection from the field and data processing.

2.9 Comparability

Published data in this report are compared with previous data using the same survey's tools, and the data are internationally comparable, because they are adopted in a system of National Accounts 1993 (SNA93), and ISIC-3 of economic activities

2.10 Notes on Data

- Differences of results of certain indicators that can be noticed are due to approximation.
- Financial data was collected by NIS, US \$ and JD, but it was converted and published in US \$.
- There are some zero values due to either such values are low, or unavailable in some vehicle of the selected sample, so its not necessarily to be a zero value for all of them.

- **Exchange rates for year 2010:**

- US \$ / NIS = 3.7315
- US \$ / JD = 0.7090

Chapter Three

Concepts and Definitions

Statistical unit:

Is a research unit engaged in economic activity, which is collected by the statistical data, and statistical unit for this survey is the vehicle.

Main Economic Activity:

The main work of the enterprise based on the (ISIC, rev3) and that contribute by the large proportion of the value added when more than one activity exist in the enterprise.

Output:

The value of the final products of goods and services produced by a certain establishment which is used by other units for self-consumed or for the purposes of self gross fixed capital formation. Production includes two categories: Final products and the so-called (under operating products). Production can be classified as follows: Market outputs, Outputs of private account, and Other non-market outputs.

Intermediate consumption:

The value of the goods and services consumed as inputs, used up or transformed during the production process. It is measured during a specific period in time in a way similar to measuring production. Intermediate consumption is estimated by purchase price, which is defined as the producers' price plus transportation and wholesale and retail trade margins. The value of the gross intermediate consumption on the level of the total economy is the same whether calculated by purchase or producers' price. However, on the detailed level, the two evaluations vary.

Gross value added:

Value added is a central concept of production and refers to the generated value of any unit that carries out any productive activity. Gross value added is defined as the value of gross production less the value of intermediate consumption.

Employees Compensation:

Compensation of employees is the total remuneration, in cash or in kind, including social security contributions, payable by an enterprise to an employee in return for work done by the latter.

Taxes on production:

Those are taxes that are compulsory cash or in kind payments payable by producers to the general government. it consists of taxes on products payable on goods and services at production, sale, or exchange and other taxes payable on production by resident producers as a result of carrying out the production process.

Employed Persons:

A person who works for a public or private employer and receives remuneration in wage, salary, commission, tips, piece-rates or pay in kind.

Gross Operating Surplus:

It is the value of the gross value added at basic prices less the total of compensation of employees (including compensations payable to non-residents) less taxes (minus subsidies on product).

Depreciation:

It is the value of the assets which can be reproduced and depreciated during the year, depreciation is calculated on the current substitutive value.

Private Car:

Private vehicles are engaged in public transport of passengers in return for payment.

Taxi:

A motor vehicle intended for the carriage of passengers (in return for payment), and designed to seat no more than 9 persons (including the driver), and described in its license as a taxi.

Freight Transport: All kinds of trucks, small and large works in public transport of goods in return for payment, not including owned for establishments.