

Palestinian Central Bureau of Statistics (PCBS)

Decrease in the Consumer Price Index (CPI) during June,06/2019

The overall CPI for Palestine during June 2019 decreased by 0.48% compared with May 2019 (by 1.26% in Gaza Strip, by 0.34% in the West Bank**, and with a slight decrease of 0.01% in Jerusalem J1*).

The changes in Palestinian CPI for June 2019 is traced back to changes in prices of the following expenditure sub groups compared with previous month:

Sub Groups	Percent Change
Fresh Vegetables	- 14.30%
Eggs	- 9.39%
Dried Vegetables	- 8.00%
Fresh Fruit	- 4.31%
Potatoes and other Tubers	- 3.34%
Fresh Meat	+ 2.11%
Fish, Live, Fresh, Chilled, or Frozen	+ 1.96%
Flour of Cereals	+ 1.25%
Fresh Chicken	+ 0.86%

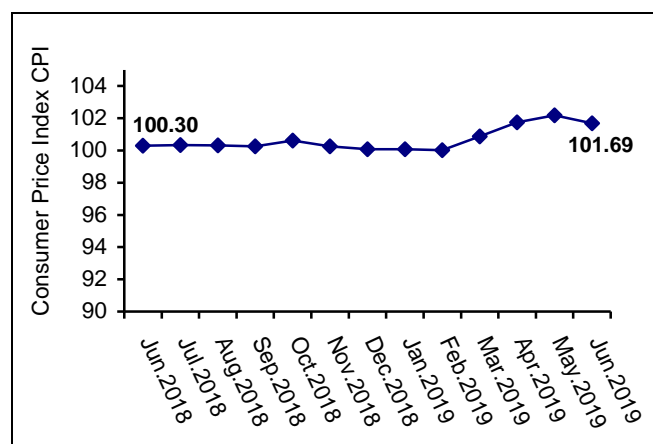
The Palestinian CPI during June 2019 increased by 1.39% compared with June 2018 (by 1.87% in Jerusalem J1*, by 1.02% in both the West Bank** and Gaza Strip).

The Palestinian CPI during the first half of 2019 increased by 1.41% compared with the same period of the previous year (by 1.78% in the West Bank**, by 1.08% in Jerusalem J1*, and by 0.52% in Gaza Strip).

The table shows monthly percent changes in CPI by Palestinian regions for the months: January – June 2019:

Month	Monthly Percent Change			
	Palestine	West Bank*	Gaza Strip	Jerusal-em J1*
January 2019	+ 0.01	+ 0.01	+ 0.15	- 0.19
February 2019	- 0.05	+ 0.17	- 0.57	- 0.49
March 2019	+ 0.85	+ 0.88	+ 0.89	+ 0.57
April 2019	+ 0.85	+ 1.09	+ 0.07	+ 0.76
May 2019	+ 0.43	- 0.14	+ 1.12	+ 1.89
June 2019	- 0.48	- 0.34	- 1.26	- 0.01

The trend line of Consumer Price Index in Palestine for the months: June 2018 – June 2019 (Base Year 2018 = 100)



Notice:

- The base year of Consumer Price Index has been updated to be 2018.
- Reliance on the new version of the Classification of Individual Consumption according to Purpose COICOP – 2018 issued by the United Nation Statistic Division (UNSD), to classify major groups, commodities' and services consumed.

Notes:

*Data represent those parts of Jerusalem which were annexed by Israeli Occupation in 1967.

**Data exclude those parts of Jerusalem which were annexed by Israeli Occupation in 1967.



**For more information, please contact:
Palestinian Central Bureau of Statistics
P.O BOX 1647, Ramallah, Palestine.**

Tel: (972/970) 2 2982700

Fax: (972/970) 2 2982710

Toll free.: 1800300300

E-Mail diwan@pcbs.gov.ps

Web-Site: <http://www.pcbs.gov.ps>

