



## Palestinian Central Bureau of Statistics (PCBS)

### Decrease in the Consumer Price Index during November, 11/2017

The overall **CPI for Palestine** during **November 2017** decreased by **0.38%** compared with October 2017 (by 0.96% in Gaza Strip, by 0.17% in the West Bank\*\*, and by 0.16% in Jerusalem J1\*).

The changes in Palestinian CPI for November 2017 is traced back to changes in prices of the following expenditure sub groups compared with previous month:

Sub Groups	Percent Change %
Dried Vegetables	- 8.72%
Fresh Poultry	- 6.36%
Fresh Vegetables	- 5.59%
Fresh Fruit	- 2.22%
Rice	- 0.61%
Liquid Fuel for Cars	- 0.45%
Potatoes and other	+ 3.15%
Gas	+ 2.38%
Fresh Fish	+ 2.17%
Eggs	+ 1.50%
Flour	+ 1.11%
Vegetable Oils	+ 0.73%

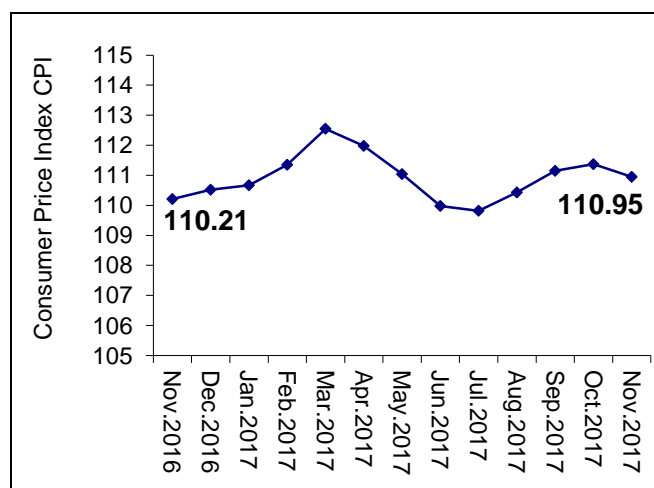
The Palestinian CPI during November 2017 increased by 0.67% compared with November 2016 (by 1.24% in Jerusalem J1\*, and by 1.12% in Gaza Strip, while it decreased by 0.21% in the West Bank\*\*).

The Palestinian CPI during the first eleven months of 2017 increased by 0.23% compared with the same period of the previous year (by 2.25% in Jerusalem J1\*, and slightly increased by 0.09% in Gaza Strip and by 0.08% in the West Bank\*\*).

The table below shows monthly percent changes in CPI by region for the period **January – November 2017:**

Month	Monthly Percent Change			
	Palestine	West Bank*	Gaza Strip	Jerusal-em J1*
January	+ 0.14	+ 0.03	+ 0.38	+ 1.02
February	+ 0.62	+ 0.78	+ 0.40	+ 0.35
March	+ 1.08	+ 0.22	+ 2.33	- 0.70
April	- 0.50	- 1.01	+ 0.13	+ 0.61
May	- 0.84	- 0.50	- 1.62	- 0.17
June	- 0.96	- 0.90	- 1.61	- 0.29
July	- 0.15	+ 0.36	- 0.58	- 0.13
August	+ 0.56	+ 0.57	+ 0.31	+ 0.47
September	+ 0.65	+ 0.14	+ 1.39	+ 0.28
October	+ 0.20	- 0.08	+ 0.65	+ 0.08
November	- 0.38	- 0.17	- 0.96	- 0.16

**The trend line of Consumer Price Index in Palestine for November 2016 – November 2017 (Base Year 2010=100)**



#### Notes:

\*The data of Jerusalem J1 includes that part of Jerusalem governorate which was annexed forcefully by Israel following its occupation of the West Bank in 1967.

\*\*The data of the West Bank doesn't include that part of Jerusalem governorate which was annexed forcefully by Israel following its occupation of the West Bank in 1967.

#### NB:

Data collection of Consumer Price Index survey was funded by the European Union.

Date: 14/12/2017