

(2010)

2010 /

2006

.2010 - 1431 ©

:

)

.2010

. - .(2010

:

. - **1647** . .

(970/972) 2 298 2700 :

(970/972) 2 298 2710 :

diwan@pcbs.gov.ps :

<http://www.pcbs.gov.ps> :

<hr/>		<hr/>
5	(2010)	.1
9		.2
11		.3

2003-1999

1997

.2010-2004

2004

2010

%22.0

2010

%24.8 %25.4 2009

2009

2007

%.26.0

2008

%24.5

2009

%.23.6

2006

%.21.5

(2010)

2010 2009 *

()

2010

2009

2009

2010

*

*

%12.5

2009

%2.9

2010

2004

2009

2009

%1.6

362.1

*

%2.1

2010

2009

%9.3

2009

2007

2007

.(3,770,270)

2010

*

2010

*

:

2009

2010

-

.2009

%20.1

2009

%2.6

%4.0

%2.1

2009

2010

-

.2009

.1967

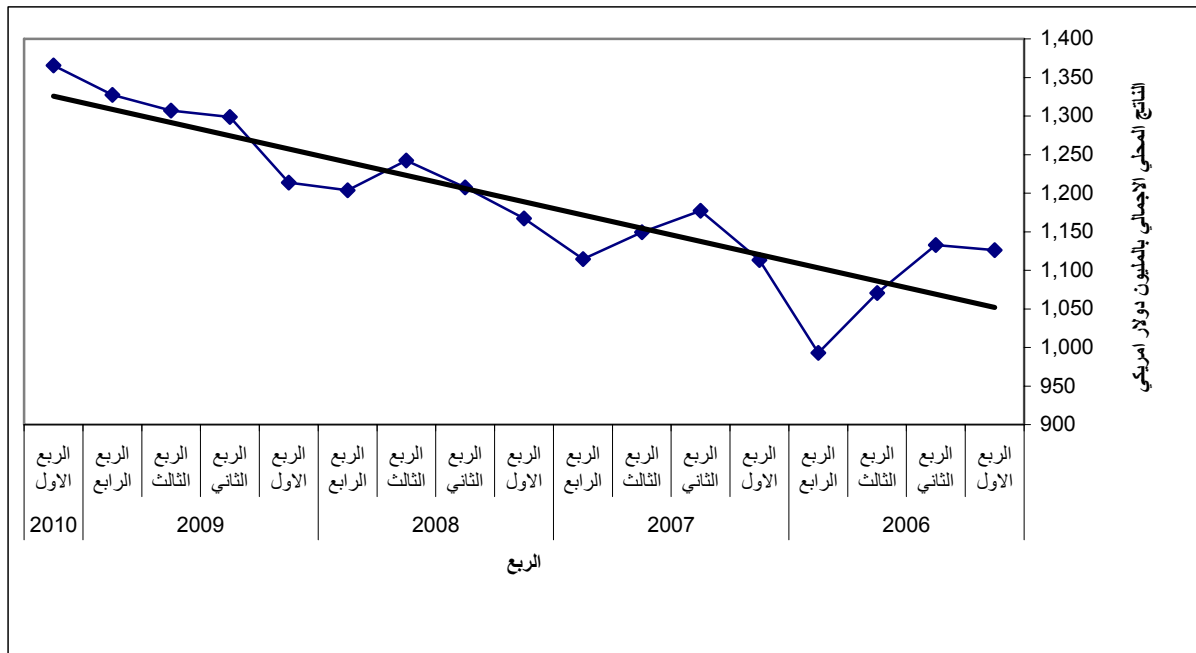
*

2010	%9.4			-
.2009		%18.8	2009	
2010				-
.2009		%8.3	%0.3	2009
2010				-
.2009		%8.2	2009	%3.5
2010				-
.2009		%21.6	%2.5	2009
2010				-
	%8.0		%3.9	2009
				.2009
2010		%1.9		-
.2009		%5.7	2009	
	%22.3			-
.2009		%26.9	2009	2010
2010				-
.2009		%10.6	%2.2	2009

2010-2006

*

:(1)



.1967

*

:
: (SNA'93)
:(Institutional Unit- Enterprise) - -
) :(Establishment) -
(
:
:
:
()
:
:

:

:

:

*

: 1

2004 : 2010

Table 1: Value Added and Percentage Contribution to GDP in the Palestinian Territory* by Economic Activity, First Quarter 2010 at Constant Prices: (2004 is the Base Year)

Value in US\$ Million

Economic Activity	(%) Percentage Contribution(%)	** Value added**	
Agriculture and fishing	5.2	70.6	
Mining, manufacturing, electr. and water	14.2	194.5	
Mining and quarrying	0.4	6.1	
Manufacturing	10.6	145.0	
Electricity and water supply	3.2	43.4	
Construction	7.4	100.9	
Wholesale and retail trade	10.7	145.6	
Transport, Storage and Communications	8.8	119.6	
Financial intermediation	5.7	78.4	
Services	23.1	315.2	
Real estate, renting and business services	7.9	107.7	
Community, social and personal services	1.8	24.2	
Hotels and restaurants	1.5	20.5	
Education	8.5	116.1	
Health and social work	3.4	46.7	
Public administration and defense	14.6	199.6	
Households with employed persons	0.1	1.2	
FISIM	-5.0	-68.3	
Customs duties	5.4	73.9	
VAT on imports, net	9.8	134.2	
Quarterly Gross Domestic Product	100	1,365.4	

* Excluding that part of Jerusalem, which was annexed after the 1967 occupation by Israel

1967

** Flash Estimates

**

2004

:

2010 -2009

*

:2

Table 2: Value Added in the Palestinian Territory* by Economic Activity and Quarter for the Years 2009- 2010 at Constant Prices: 2004 is the Base Year

Value In US\$ Million

Economic Activity	2010	2009				
	***	**	**	**	**	
	Q I	Q IV	Q III	Q II	Q I	
Agriculture and fishing	70.6	68.8	54.1	66.8	58.8	
Mining, manufacturing, electr. and water	194.5	190.5	188.8	187.9	187.1	
Mining and quarrying	6.1	6.1	5.4	5.4	5.8	
Manufacturing	145.0	142.9	142.1	141.4	140.5	
Electricity and water supply	43.4	41.5	41.3	41.1	40.8	
Construction	100.9	92.2	99.0	106.7	84.9	
Wholesale and retail trade	145.6	145.2	138.4	132.9	134.5	
Transport, Storage and Communications	119.6	115.6	110.5	109.1	110.5	
Financial intermediation	78.4	76.5	74.7	69.3	64.5	
Services	315.2	302.3	306.2	315.0	295.1	
Real estate, renting and business services	107.7	103.7	113.8	124.3	117.1	
Community, social and personal services	24.2	22.6	24.7	25.1	21.8	
Hotels and restaurants	20.5	19.5	19.4	16.2	9.6	
Education	116.1	118.3	111.3	111.9	109.8	
Health and social work	46.7	38.2	37.0	37.5	36.8	
Public administration and defense	199.6	195.3	186.3	181.9	180.4	
Households with employed persons	1.2	1.1	1.2	1.2	1.1	
FISIM	-68.3	-71.9	-71.0	-67.1	-63.9	
Customs duties	73.9	77.7	80.6	77.4	62.5	
VAT on imports, net	134.2	134.1	138.3	117.7	98.4	
Gross Domestic Product	1,365.4	1,327.4	1,307.1	1,298.8	1,213.9	

* Excluding that part of Jerusalem, which was annexed after the 1967 occupation by Israel

1967

*

** Preliminary Estimates *** Flash Estimates

**

2004

:

2010-2009

*

:3

Table 3: Percentage Contribution to GDP in the Palestinian Territory* by Economic Activity and Quarter for Years 2009-2010 at Constant Prices: 2004 is the Base Year

Economic Activity	2010	2009			
	*** Q I	** Q IV	** Q III	** Q II	** Q I
Agriculture and fishing	5.2	5.2	4.1	5.1	4.8
Mining, manufacturing, electr. and water	14.2	14.4	14.4	14.5	15.4
Mining and quarrying	0.4	0.5	0.4	0.4	0.5
Manufacturing	10.6	10.8	10.8	10.9	11.5
Electricity and water supply	3.2	3.1	3.2	3.2	3.4
Construction	7.4	6.9	7.6	8.2	7.0
Wholesale and retail trade	10.7	10.9	10.6	10.2	11.1
Transport, Storage and Communications	8.8	8.7	8.5	8.4	9.1
Financial intermediation	5.7	5.8	5.7	5.3	5.3
Services	23.1	22.8	23.4	24.3	24.4
Real estate, renting and business services	7.9	7.8	8.7	9.6	9.7
Community, social and personal services	1.8	1.7	1.9	1.9	1.8
Hotels and restaurants	1.5	1.5	1.5	1.2	0.8
Education	8.5	8.9	8.5	8.7	9.1
Health and social work	3.4	2.9	2.8	2.9	3.0
Public administration and defense	14.6	14.7	14.3	14.0	14.9
Households with employed persons	0.1	0.1	0.1	0.1	0.1
FISIM	-5.0	-5.4	-5.4	-5.2	-5.3
Customs duties	5.4	5.8	6.2	6.0	5.1
VAT on imports, net	9.8	10.1	10.5	9.1	8.1
Gross Domestic Product	100	100	100	100	100

* Excluding that part of Jerusalem, which was annexed after the 1967 occupation by Israel

1967

*

** Preliminary Estimates *** Flash Estimates

**

2004

Table 4: GDP Per Capita in the Palestinian Territory* by the Quarters of the Years 2009-2010 at Constant Prices: (2004 is the Base Year)

Value in US\$

Quarter \ Year	2010	**2009	
First Quarter	***362.1	331.4	
Second Quarter	-	352.1	
Third Quarter	-	351.8	
Fourth Quarter	-	354.6	
Annual Value	-	1,389.9	

* Excluding that part of Jerusalem, which was annexed after the 1967 occupation by Israel

1967

** Preliminary Estimates

**

***Flash Estimates

(-) The data is not available

(-)

Table 5: Value Added in the Palestinian Territory* by Economic Activity for the Years 1999- 2009 at Constant Prices

Value in US\$ Million

Economic Activity	**2009	2008	2007	2006	2005	2004	2003	2002	2001	2000	1999
Agriculture and fishing	248.5	286.1	252.2	240.3	236.2	296.7	297.6	251.3	340.8	403.6	470.7
Mining, manufacturing, electr. and water	754.3	717.5	695.6	665.6	789.1	728.0	657.8	534.7	616.8	545.6	655.5
Mining and quarrying	22.7	21.5	20.8	37.3	40.8	37.7	45.9	25.2	21.2	23.8	35.7
Manufacturing	566.9	539.3	527.8	505.4	591.8	554.0	470.7	385.9	471.7	472.4	566.4
Electricity and water supply	164.7	156.7	147.0	122.9	156.5	136.3	141.2	123.6	123.9	49.4	53.4
Construction	382.8	314.4	299.1	312.3	310.2	238.5	187.2	127.7	205.4	366.3	616.9
Wholesale and retail trade	551.0	544.9	486.8	445.7	451.8	437.5	385.4	408.9	382.8	504.9	537.8
Transport, Storage and Communications	445.7	412.7	399.0	390.0	347.3	348.7	229.9	183.9	209.4	221.0	231.0
Financial intermediation	285.0	280	272.9	184.8	200.5	150.2	154.2	136.3	134.4	181.7	169.1
Services	1,218.6	1,090.4	1,009.1	893.6	1,084.0	984.4	927.9	862.6	896.1	1,050.4	990.8
Real estate, renting and business services	458.9	416.6	387.0	321.9	481.0	454.5	396.3	376.1	404.1	534.0	444.3
Community, social and personal services	94.2	75.5	60.8	52.2	57.3	39.0	51.6	33.5	28.6	29.9	28.3
Hotels and restaurants	64.7	58.5	59.6	62.1	56.3	39.1	73.0	84.2	87.7	136.0	128.0
Education	451.3	404.8	377.7	339.3	375.7	326.1	284.7	260.9	269.4	242.2	262.4
Health and social work	149.5	135.0	124.0	118.1	113.7	125.7	122.3	107.9	106.3	108.3	127.8
Public administration and defense	743.9	685.2	658.8	679.1	641.5	598.7	633.6	545.6	663.7	518.4	497.7
Households with employed persons	4.6	3.7	3.6	2.9	1.8	2.9	8.2	7.4	7.5	9.3	8.7
FISIM	-273.9	-275.3	-257.0	-128.9	-116.5	-114.3	-114.3	-99.6	-114.3	-154.3	-129.5
Customs duties	298.2	286.6	283.8	286.0	265.9	204.0	166.5	87.4	170.0	196.7	208.6
VAT on imports, net	488.5	474.7	450.2	350.9	347.7	323.1	215.6	217.9	252.6	274.9	254.4
Gross Domestic Product	5,147.2	4,820.9	4,554.1	4,322.3	4,559.5	4,198.4	3,749.6	3,264.1	3,765.2	4,118.5	4,511.7

* Excluding that part of Jerusalem, which was annexed after the 1967 occupation by Israel

1967

*

** Preliminary Estimates

**