



**Palestinian National Authority  
Palestinian Central Bureau of Statistics**

**Palestinians at the End of Year 2006**

**December, 2006**

©December, 2006.  
**All rights reserved.**

**Suggested Citation:**

**Palestinian Central Bureau of Statistics, 2006.** *Palestinians at the End of Year 2006.* Ramallah - Palestine.

All correspondence should be directed to:  
Dissemination and Documentation Department/Division of User Services  
**Palestinian Central Bureau of Statistics**  
**P.O.Box 1647.**  
**Ramallah, Palestine.**

Tel: (972/970) 2 240 6340  
E-mail: [diwan@pcbs.gov.ps](mailto:diwan@pcbs.gov.ps)

Fax: (972/970) 2 240 6343  
Web-site: <http://www.pcbs.gov.ps>

## **Preface**

This report presents the most important indicators about the number of Palestinians all over the world, including their demographic characteristics. The report is based on a number of primary and secondary data sources, such as field surveys and studies as well as researches about topics related to estimating the number of Palestinians and their demographic and social characteristics.

The report embodies recent estimates about the number of Palestinian population in Diaspora and in Israel, and their most significant demographic characteristics. It also presents recent estimates about the number of Palestinian population in the West Bank and Gaza Strip based on the latest available data, as well as the demographic characteristics of the Palestinian population in the Palestinian Territory.

It's worth to note that one of the main obstacles is to provide comprehensive and accurate data on the Palestinians all over the world and their main characteristics due to objective reasons related to the sovereignty of states where the Palestinians are living, the availability of data sources and the integration cases for some Palestinians living in the hosting countries, all these reasons , among others cause many difficulties to disaggregate the Palestinians data .

In this regard, although the use of UNRWA data bases it still need more updating due to the shortage of the registration issues.

This report is part of PCBS efforts and plan to provide policy makers and planners as well as politicians, development planners, and academics with the most reliable statistics. We hope that this report would assist planners and decision-makers in planning, effective decisions in the population and social fields and in the development process towards the independent Palestinian slate and it's capital Jerusalem in addition to the return of the refugees to their homes.

**December, 2005**

**Luay Shabaneh  
President**



## Table of Contents

<b>Subject</b>	<b>Page</b>
<b>List of Tables</b>	
<b>List of figures</b>	
<b>Executive Summary</b>	<b>[11]</b>
Chapter One: <b>Introduction</b>	<b>[13]</b>
Chapter Two: <b>Concepts and Definitions</b>	<b>[15]</b>
Chapter Three: <b>Palestinians in Diaspora and in Historic Palestine</b>	<b>[17]</b>
Chapter Four: <b>The Palestinian Population in the Palestinian Territory</b>	<b>[21]</b>
<b>Tables</b>	<b>29</b>



## List of Tables

<b>Table</b>		<b>Page</b>
<b>Table 1:</b>	Estimated Palestinian Population in the World by Country, End Year 2006	<b>31</b>
<b>Table 2:</b>	Estimated Palestinian Population in the Palestinian Territory by Refugee Status and Region, End Year 2006	<b>31</b>
<b>Table 3:</b>	Projected Population in the Palestinian Territory by Governorate, End Year 2006	<b>32</b>
<b>Table 4:</b>	Projected Population in the Palestinian Territory by Age, Region and Sex, End Year 2006	<b>33</b>
<b>Table 5:</b>	Percentage Distribution of Population in the Palestinian Territory by Age, Region and Sex, End Year 2006	<b>34</b>
<b>Table 6:</b>	Registered Marriages at the Shari'a Courts and Churches in the Palestinian Territory by Governorate, 1998-2005	<b>35</b>
<b>Table7:</b>	Registered Divorces in the Palestinian Territory by Governorate, 1998-2005	<b>36</b>
<b>Table 8:</b>	Crude Marriage Rate in the Palestinian Territory by Region, 1998-2005	<b>37</b>
<b>Table 9:</b>	Crude Divorce Rate in the Palestinian Territory by Region, 1998-2005	<b>37</b>
<b>Table 10:</b>	Demographic Indicators in the Palestinian Territory by Region, 1997-2006	<b>38</b>





## List of Figures

<b>Figure</b>	<b>Page</b>
<b>Figure 1:</b> Percentage Distribution of Palestinian Population by Reside Country, End Year 2006	<b>[17]</b>
<b>Figure 2:</b> Projected Population for Palestinians and Jewish in Historic Palestine, Selected Years	<b>[18]</b>
<b>Figure 3:</b> Percentage Distribution of Population in the Palestinian Territory by Governorate, End Year 2006	<b>[21]</b>
<b>Figure 6:</b> Registered Marriages at the Shari'a Courts and Churches in the Palestinian Territory by Governorate, 1998-2005	<b>[22]</b>
<b>Figure 7:</b> Registered Divorces in the Palestinian Territory by Governorate, 1998-2005	<b>[23]</b>



## Executive Summary

- The estimated number of Palestinians all over the World by the end of 2005 is 10.1 millions of which about 4 million living in the Palestinian Territory (39.2%) of the total Palestinians all over the World.
- Palestinian population and the Jewish population will be equal in 2010 (demographical dichotomy); however, the Palestinian population will increase to 5.7 million in mid 2010 whereas the Jewish population will become 5.7 million. The Jewish population will decline to about 46% of the population in mid 2020 at 6.5 million compared to 7.6 million Palestinians.
- According to the 2000 data; 41.7% of the Palestinian population living in Jordan are under 15 years, whereas the population aged 65 years and over constitute about 4.2% and the total fertility rate was 4.6 births per woman.
- According to the 2006 data about Palestinians living in Syria; 33.1% of the Palestinian population are under 15 years, where the population aged 65 years and over constitute about 4.3% and the total fertility rate was 2.4 births per woman.
- According to the 2006 data about Palestinians living in Lebanon show that 33.0% of them are under 15 years, whereas the population aged 65 years and over constitute about 5.5%. the total fertility rate was 2.3 births per woman.
- According to the 2005 data about Palestinians living in Israel, 40.6% of the Palestinian population are under 15 years, whereas the population aged 65 years and over constitute about 3.2% and the total fertility rate was 3.7 births per woman.
- The population of the Palestinian Territory is estimated to about 4 million at the end of 2006 thereof 2.5 million (63.0%) in the West Bank and 1.5 million (37.0%) in Gaza Strip.
- 43.8% of the Population in the Palestinian Territory are Refugees. (28.8% in the west bank and 69.2%in Gaza strip)
- 45.7% of the Population in the Palestinian Territory are under 15 years. (43.9% in the west Bank and 48.8% in Gaza strip)
- Marriages up lined by 4.5% in 2005 comparing with 2004 in the Palestinian Territory.
- Divorces up lined by 6.3% in 2005 comparing with 2004 in the Palestinian Territory, during 2005 compared with 2004.
- Crude birth rate in the Palestinian Territory dropped from 42.7 births per 1000 population in 1997 to 36.7 in 2006
- The crude death rate in the Palestinian Territory declined from 4.9 deaths per 1000 population in 1997 to 3.9 in 2006.
- Population natural increase rate is 3.3% in the Palestinian Territory in 2006.

- The total fertility rate in the Palestinian Territory in 2003 was 4.6 births; 4.1 births in the West Bank and 5.8 births in Gaza Strip.
- Life expectancy in 2006 in the Palestinian Territory is 71.7 years for males and 73.2 years for females.

## Chapter One

### Introduction

Social and development planning of the Palestinian Territory requires a set of indicators about population and demographic characteristics to be made available especially the estimated population and their different characteristics. This annual report is part of PCBS' policy of updating population estimates and population indicators on regular basis. The report includes recent documented data on the various indicators of demographic and population characteristics.

Compiling statistical data about Palestinian people all over the world faces a number of professional, financial, and political obstacles. Direct surveys and field studies cannot be carried out in a number of countries hosting Palestinian refugees. Moreover, the necessary technical requirements to select statistical samples to conduct field studies are not available. In addition, the process of enumerating Palestinians in diaspora is very complicated due to technical and political reasons. However, PCBS is seeking to carry out a number of activities along the lines of the current conditions that enables us to publish the most reliable professional estimates based on available options.

#### **Data Sources and Methodology:**

Data of the report is based on a number of household surveys and censuses conducted by PCBS in the Palestinian Territory, household surveys conducted in hosting countries about Palestinian refugees, and the administrative records of international organizations as well as studies and researches conducted by institutions and individuals in the filed of estimating the number of Palestinian people and their demographic and social characteristics, such as the reports of the High Commissioner of the United Nations Relief and Work Agency for Palestinian Refugees in the Near East (UNRWA), UNICEF and reports of international organizations, the Palestinian Central Bureau of Statistics and Natural Resources-Damascus, the studies of FaFo Institute for Applied Social Sciences, and different websites dealing with the Palestinian case.

On the other hand, the data of Palestinians living in Israel are based on the series of Israeli Statistical Abstract of the Israel Central Bureau of Statistics (Statistical Series, No. 57, 2006, and the Galilee Society-the Arab National Society for Health Research of Services-Rikaz Data Bank. However, the reliability of the Israeli sources is questionable regard to numbers of Palestinians. Providing data about Palestinians living in Israel is not an easy task because the sources are only limited to the data of the Israel Central Bureau of Statistics. When the number of the Palestinian population in Israel is to be calculated, the data of the Palestinian population living in Israel must be separated from the data of the Palestinian population of Jerusalem Governorate (J1 Region)<sup>1</sup>, the Arabs in Golan Height and the Lebanese lived temporary in Israel.

---

<sup>1</sup> J1: Includes those parts of Jerusalem Governorate, which were annexed by Israel in 1967.

<sup>2</sup> Palestine Liberation Organization. Central Bureau of Statistics and Natural Resources, Palestinian Statistical Abstract, No.9, 1993/1994, Damascus.

<sup>3</sup> See: [www.un.org/unrwa/](http://www.un.org/unrwa/)

<sup>4</sup> National Center for Studies and Documentation, 2000. The Memory of Palestine.

For the Palestinians in the Palestinian Territory (West Bank and Gaza Strip), PCBS prepares the data of the Palestinian population based on recent estimates based on the most recent information and the Population, Housing, and Establishment Census 1997 as well as assumptions about trends of expected fertility, mortality, and migration of the Palestinian population in the Palestinian Territory in the coming years.

Data of the Palestinian population in Jordan are based on the assumption, adopted by several researchers and statisticians, that Palestinians constitute a half of the population of Jordan and that they share equal characteristics with the rest of the Jordanian population<sup>2</sup>. Such assumption reflects, in fact, the minimum number of the Palestinian population in Jordan. According to UNRWA publications, estimated the Palestinian population in Jordan to 1.9 million in 30/9/2006<sup>3</sup>. It is worth noting that 282,000 Palestinians living in Jordan are not registered at UNRWA, according to the statistics of the National Center for Studies and Documentation 2000<sup>4</sup>. Moreover, a large number of Palestinians have Jordanian nationality.

Data about the Palestinian population in Syria and Lebanon are based on the estimates of the Palestinian Central Bureau of Statistics and Natural Resources-Damascus and a number of surveys carried out in cooperation with international organizations as well as the reports of the High Commissioner of UNRWA. Finally, data about Palestinians living in other Arab and foreign countries states are drawn from estimates of certain researchers and interested people in addition to the estimates of other Palestinian societies and centers.

#### **Assumptions of Population Projection:**

1. Palestinian population in the Palestinian Territory: Projections of the number of Palestinian population in the Palestinian Territory are based on the following assumptions:

- Decline of the Total Fertility Rate by 50% between 1999 and 2025 in the West Bank and Gaza Strip (based on Demographic and Health Surveys).
- Decline in the Infant Mortality Rate by 50% between 1995 to 1999 and 2020 to 2024 in the West Bank and Gaza Strip (based on Demographic and Health Surveys).
- Assuming that Net international Migration to equal zero since 2001-2025.

2. Arab states: Projection of the number of Palestinian population in the Arab states are based on a constant growth rate of 2.5%.

3. Foreign countries: Projections of the number of Palestinian population in foreign countries are based on a constant growth rate of 1.5%.

4. Projection of the number of Palestinian population in Israel are based on a dominant constant annual growth rate of 2.7%. (3.0% for Muslims, 1.9 for Druze and 1.4% for Arab Christians)

#### **Report Structure:**

The report constitutes of a Preface and four Chapters. Chapter One contains an Introduction. Chapter Two presents the report's concepts and definitions. Chapter Three discusses Palestinians in Diaspora and in historic Palestine (estimating the number of Palestinians in the world and the demographic characteristics of Palestinians living in Jordan, Syria, Lebanon, Israel. Chapter Four focuses on end year estimates of the Palestinian population in the Palestinian Territory, percentage distribution of population by selected age groups, sex ratio, the percentage of women aged (15-49) years, the number of marriages and divorces between (1998-2005), and other specific demographic characteristics.

## Chapter Two

### Concepts and Definitions

<b>Sex Ratio:</b>	The number of males per 100 females in a population.
<b>Dependency Ratio:</b>	The ratio of the persons defined as economically dependent to those in the ages defined as economically productive; arbitrary defined as the ratio of the elderly (those 65 years and over) plus the young (those under 15 years of age) to the population in the “working ages” (those 15-64 years of age).
<b>Median Age:</b>	The age which divides a population into two numerically, equal groups; that is, half of the people are younger than this age and the second half are older.
<b>Crude Birth Rate:</b>	The number of births per 1,000 persons in a given year.
<b>Growth Rate:</b>	The rate at which a population is increasing (or decreasing) in a given year due to natural increase and net migration, expressed as a percentage of the base population.
<b>Rate of Natural Increase:</b>	The rate at which a population is increasing (or decreasing) in a given year due to an increase (or decrease) of births against deaths expressed as a percentage of the base population.
<b>Crude Death Rate:</b>	The number of deaths per 1,000 persons in a given year.
<b>Total Fertility Rate:</b>	The average number of children that would be born alive to a woman (or group of women) during her life time if she were to pass through her childbearing (15-49) years conforming to the age specific fertility rates of a given years. The sum of age specific fertility rates is multiplied by 5.
<b>Life Expectancy:</b>	The average number of additional years a person would live if current mortality trends were to continue. Most commonly cited as life expectancy at birth.
<b>Crude Marriage Rate (CMR):</b>	The number of marriages per 1000 population in mid year.
<b>Crude Divorce Rate (CDR):</b>	The number of divorces per 1000 population in mid year.
<b>Refugee Status:</b>	It refers to the name of the locality in which the person spends most of his time during the year (lived there six months and above), irrespective of whether it is the person’s same place in which he works and performs related activities or the place in which his original household is based or not.





## Palestinians in Diaspora and in Historic Palestine

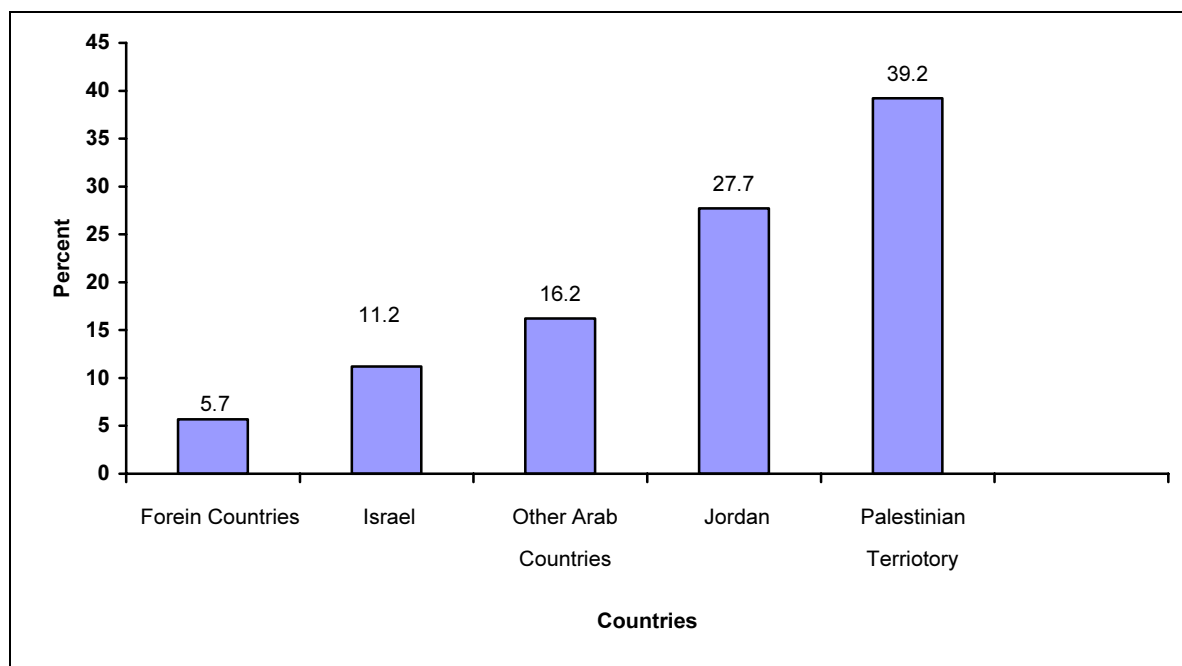
This Chapter presents the main indicators about population and demographic characteristics of Palestinians in Diaspora and in Historic Palestine.

### 3.1 Estimating the Number of Palestinians Worldwide:

#### 10.1 million Palestinians by end of 2006

The estimated number of Palestinians all over World by the end of 2006 is 10.1 million distributed as follows: 3.95 million in the Palestinian Territory (39.2%) of the total Palestinians all over World; 1.1 million (11.2%) live in Israel; 2.8 million (27.7%) in Jordan; on the other hand, the number of Palestinians living in other Arab countries totals 1.6 million (16.2%). The number of Palestinians living in other foreign countries is estimated to 573 thousand (5.7%).

Figure 1: Percentage Distribution of Palestinian Population by Reside Country, End Year 2006

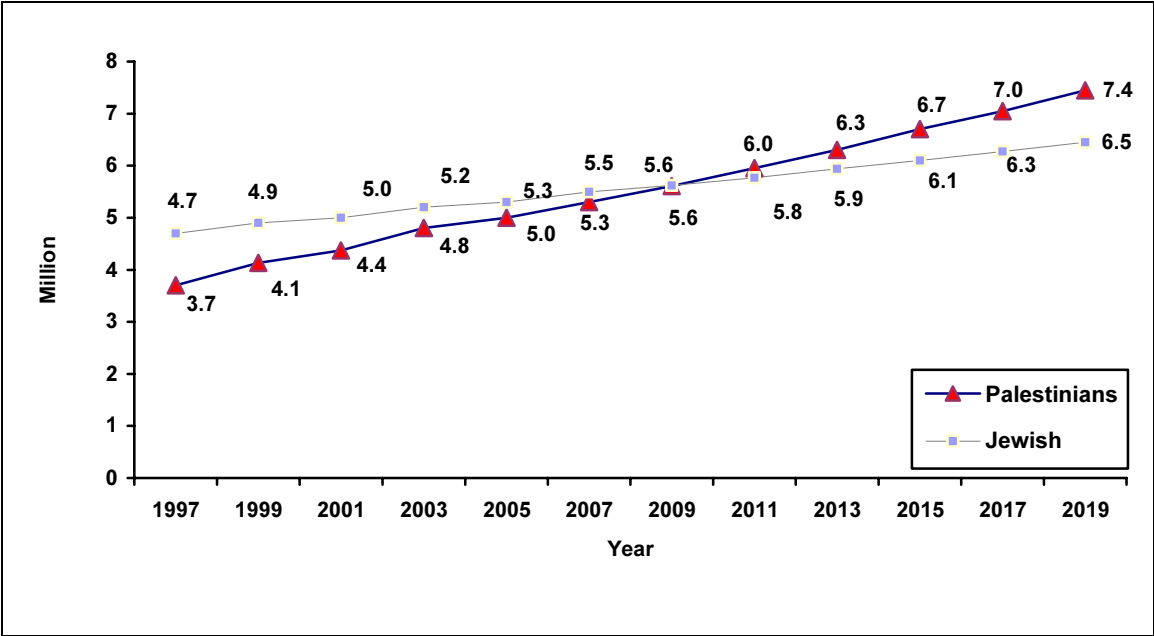


**3.2 Estimates of Palestinian and Jewish populations in historic Palestine:**

**7.6 million Palestinians compared to 6.4 million Jewish by mid of 2020 in historic Palestine <sup>6</sup>**

The estimated number of the Palestinian population in historic Palestine was 4.9 million at end of 2005. On the other hand, according to the Israeli Central Bureau of Statistics, the Jewish population was 5.4 million. According to our estimates, the Palestinian population will reach 5.3 million at end 2007, while Israeli estimates revealed that the Jewish population will reach 5.5 million in the same period. Both populations will be equal in 2010 (demographical dichotomy); however, the Palestinian population will increase to 5.7 million in mid 2010 whereas the Jewish population will become 5.7 million. The Jewish population will decline to 46.0% of the population in mid 2020 at 6.5 million compared to 7.6 million Palestinians.

**Figure 2: Projected Population for Palestinians and Jewish in Historic Palestine, Selected Years**



<sup>6</sup> Data of Palestinian Population in the Palestinian Territory obtained by PCBS estimates, on other hand, data of Jewish Population estimates obtained from Statistical Abstract of Israel 2004. No (56).

### **3.3 The Demographic Characteristics of Palestinians in Diaspora and in Israel:**

#### **Palestinians in Jordan**

According to the 2000 data about Palestinians living in Jordan, 41.7% of the Palestinian population in Jordan are under 15 years, and 4.2% of them are 65 years and over. The average household size of the Palestinian population living in Jordan is 6.2 persons, and about 87.0% of Camps residence are registered refugees at UNRWA.

Infant mortality rate and under five years child mortality rate of Palestinians living in Jordan were 22.5 and 25.1 per 1,000 live births respectively. The total fertility rate of Palestinian population living in Jordan was 4.6 births per woman, and the dependency rate was 85.4

#### **Palestinians in Syria**

According to the 2006 data about Palestinians living in Syria, 33.1% of the Palestinian population are under 15 years, and 4.3% of them are 65 years and over. The average household size of the Palestinian population in Syria is 4.9 persons, and about 95.6% of Camps residence are registered refugees at UNRWA.

Infant mortality rate and under five years child mortality rate of the Palestinian population in Syria in 2005 were 28.1 and 30.5 per 1,000 live births respectively. The total fertility rate of the Palestinian population in Syria in 2006 is 2.4 births per woman and the crude birth rate is 18.0 births per 1000 population.

#### **Palestinians in Lebanon**

The data of 2006 about Palestinians living in Lebanon show that 33.0% of them are under 15 years, and 5.5% are 65 years and over. The average household size of the Palestinian population in Lebanon is 4.9 persons.

Infant mortality rate and under five years child mortality rate of the Palestinian population in Lebanon in 2004 were 19.2 and 20.2 per 1,000 live births respectively. The total fertility rate of the Palestinian population in Lebanon is 2.3 births per woman and the crude birth rate is 16.3 births per 1000 population for 2006.

#### **Palestinians in Israel**

According to the 2005 data about Palestinians living in Israel, 40.6% of the Palestinian population are under 15 years and 3.2% of them are 65 years and over. The average household size is 5.0 persons. Infant mortality rate in 2005 were 8.0 per 1,000 live births. The total fertility rate of the Palestinian population in Israel in 2003 is 3.7 births per woman and the crude birth rate is 28.6 births per 1000 population in 2005.<sup>1</sup>

---

<sup>1</sup> The Galilee Society-the Arab National Society for Health Research of Services – Rikaz Data Bank. Website: [www.rikaz.org](http://www.rikaz.org)



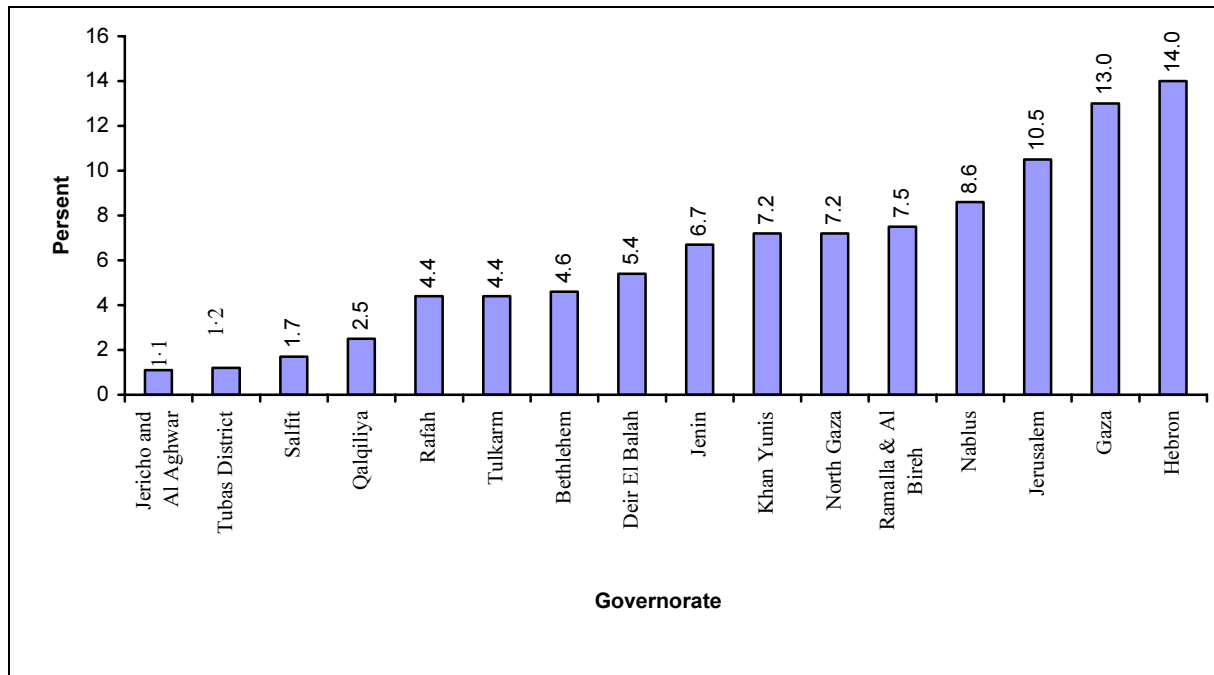
## The Palestinian Population in the Palestinian Territory

This Chapter presents the main indicators about population and demographic characteristics in the Palestinian Territory as of the end of 2005; the indicators are based on various sources.

### About 4 million are living in the Palestinian Territory at end of 2005

The population of the Palestinian Territory is estimated to about 4 million at the end of 2006 thereof 2.5 million (63.0%) in the West Bank and 1.5 million (37.0%) in Gaza Strip. According to the distribution of the population by Governorates, Hebron Governorate has the highest rate of population at 14.0% of the total population, followed by Gaza Governorate 13.0%; Jerusalem Governorate comes third with 10.5%. On the other hand, Jericho and Al Aghwar Governorate has the lowest rate of population at the end of 2006 at 1.1%.

**Figure 3: Percentage Distribution of Population in the Palestinian Territory by Governorate, End year 2006.**



### 43.8% of the Population in the Palestinian Territory are Refugees

43.8% of the population in the Palestinian Territory are refugees estimated 1.7 million at the end of 2006 thereof 714,000 (28.8%) in the West Bank and about one million (68.4%) in Gaza Strip.

### 45.7% of the Population in the Palestinian Territory are under 15 years

According to the most recent estimates, 45.7% of the population in the Palestinian Territory are under 15 years; 43.9% in the West Bank and 48.8% in Gaza Strip. The percentage of Palestinians who are above 65 years in the Palestinian Territory is 3.0%; this figure reached 3.3% in the West Bank and 2.6% in Gaza Strip.

### Sex ratio in the Palestinian Territory: 102.8 males per 100 females

The estimated number of males in the Palestinian Territory at end of 2006 is about 2 million compared with 1.95 million females, the sex ratio is 102.8. In the West Bank males' totals 1.3 million compared with 1.2 for females, the sex ratio is 102.8. In Gaza Strip, the males' totals 745 thousand compared with 726 thousand females, the sex ratio is 102.7. males per 100 females.

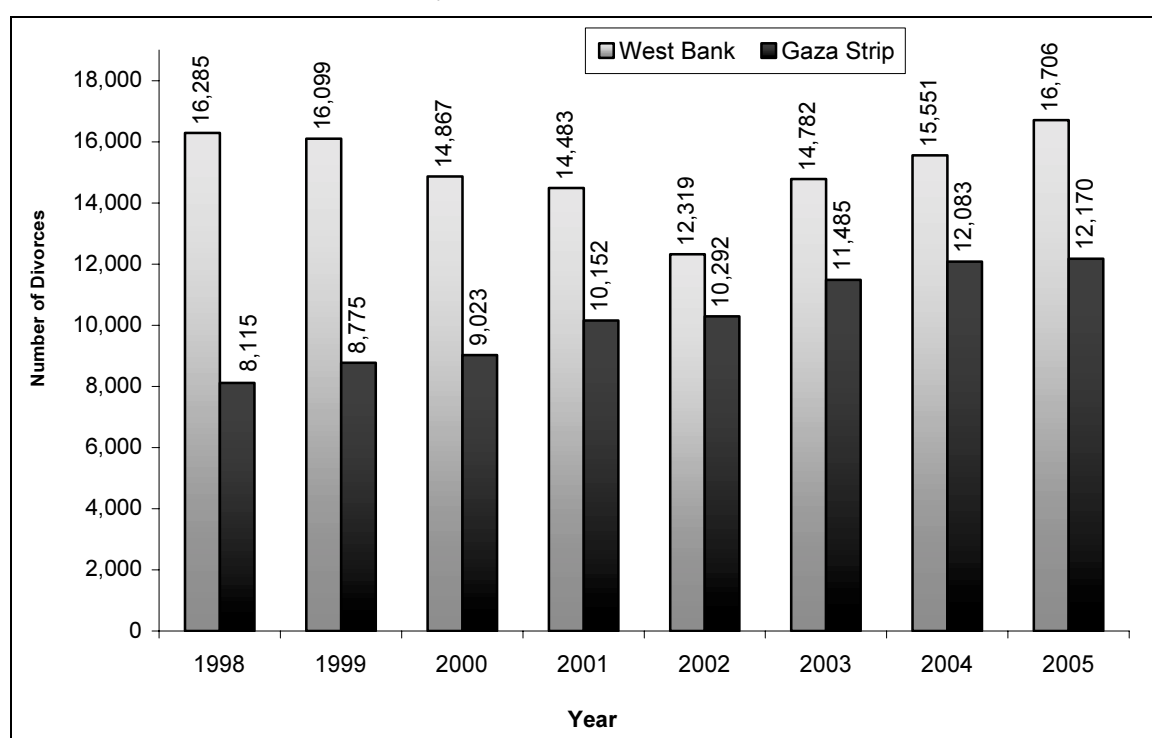
### Marriages up lined by 4.5% in 2005 compared with 2004

The time series of the number of marriages between 1998 and 2004 showed gradual rise in the number of marriages during the period 1998-2001. However, this number increase in 2005 compared with 2004.

The registered marriages in the Palestinian Territory in 2005 reached 28,876, increase of 4.5% compared with 2004. The number of registered marriages in 2005 totaled 16,706 in the West Bank (57.9%) recording 1,155 increase compared with 2004. On the other hand, in Gaza Strip, the number of registered marriages totaled 12,170 in 2005 (42.1%) recording an increase of 87 compared with 2004.

The crude marriage rate in the Palestinian Territory in 2004 was 7.7 marriages per 1000 population, 7.0 in the West Bank and 8.8 in Gaza Strip.

**Figure 4: Registered Marriages at the Shari'a Courts and Churches in the Palestinian Territory by Governorate, 1998-2005**

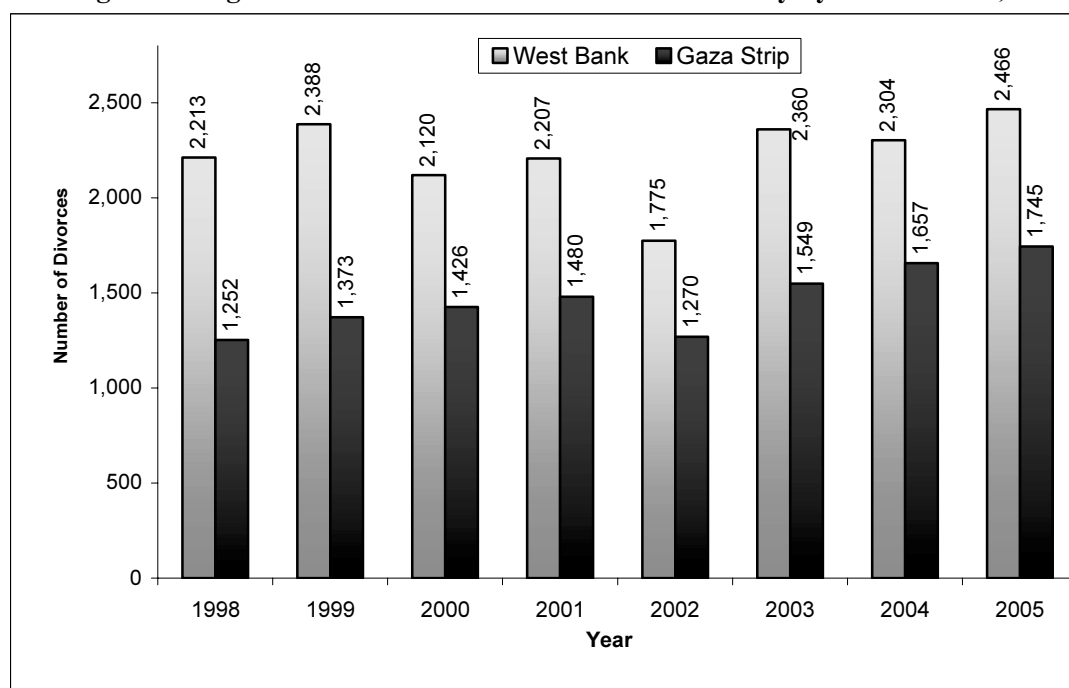


**Divorces up lined 6.3 in 2005 compared with 2004**

The number of registered divorces in 2005 totaled 4,211 in the Palestinian Territory, increase of 6.3% compared with 2004, of them 2,466 in the West Bank representing 58.6%. In Gaza Strip, registered divorces totaled 1,745 in 2005 representing 41.4% of the total registered divorces in the Palestinian Territory.

The crude divorce rate 2005 totaled 1.1 divorces per 1000 population. This rate varies by region; it is lower in the West Bank than in Gaza Strip at 1.0 and 1.3 respectively.

**Figure 5: Registered Divorces in the Palestinian Territory by Governorate, 1998-2005**



**High Dependency ratio in the Palestinian Territory**

Data indicate that dependency ratio in the Palestinian Territory dropped from 101.3 in 1997 to 94.2 in 2006 where it declined from 94.7 in 1997 to 88.5 in 2005 in the West Bank and from 114.5 in 1997 to 104.7 in Gaza Strip in 2005.

**The median age in the Palestinian Territory is 16.7 years**

There is a slight increase in the median age for in the Palestinian Territory between 1997 and 2006 where it increased from 16.4 years in 1997 to 16.9 years in 2006. Regional comparison shows that the median age increased from 17.4 years in 1997 to 17.8 years in 2006 in the West Bank and from 14.8 years in 1997 to 15.5 years in 2006 in Gaza Strip.

### **Declining crude birth rate in the Palestinian Territory**

The crude birth rate in the Palestinian Territory dropped from 42.7 births per 1000 population in 1997 to 36.7 in 2006. However, there are regional discrepancies where the crude birth rate in the West Bank decreased from 41.2 births per 1000 population in 1997 to 35.7 in 2006; whereas in Gaza Strip, the rate slightly dropped from 45.4 in 1997 to 41.7 in 2006.

### **Declining crude death rate in the Palestinian Territory**

The crude death rate in the Palestinian Territory declined from 4.9 deaths per 1000 population in 1997 to 3.9 in 2006. There is slight difference between the West Bank and Gaza Strip. In the West Bank, the crude death rate dropped from 5.1 in 1997 to 4.0 in 2006, where it dropped from 4.7 to 3.8 in Gaza Strip for the same period.

### **Population natural increase rate is 3.3% in the Palestinian Territory in 2006**

Population natural increase rate is 3.3% in the Palestinian Territory in 2006. This rate reach 3.0% in the West Bank and 3.8% in Gaza Strip. The declining mortality rate and increasing fertility rate would lead to a high rate of natural increase in the population. Subsequently, proper economic and social policies are required to cope with such increase.

### **High fertility rate in the Palestinian Territory**

The fertility rate in the Palestinian Territory is high compared to those dominant in other countries, which may be due to early marriage especially among females, the desire to have many children, and the prevailing traditions of the Palestinian society. However, indicators show that fertility rate started to decline toward end of the 20<sup>th</sup> century. According to the data of the Population, Housing, and Establishment Census 1997, the total fertility rate in the Palestinian Territory was 6.04 births; 5.6 births in the West Bank and 6.9 births in Gaza Strip. The total fertility rate in 2003 declined to 4.6 births; 4.1 births in the West Bank and 5.8 births in Gaza Strip, according to Demographic and Health Survey 2004. The average number of children ever born to ever married women in the Palestinian Territory in 2004 was 4.5 ; 4.3 in the West Bank and 4.9 in Gaza Strip.

### **Life expectancy in 2005 is 71.7 years for males and 73.0 years for females**

The decline in the mortality rate in the Palestinian Territory led to longer life expectancy to reach 71.7 years for males and 73.2 years for females in 2006. There are regional discrepancies; life expectancy in the West Bank is 71.9 years for males and 73.6 years for females compared with 71.4 years for males and 72.5 years for females in Gaza Strip.



جدول 1: عدد السكان الفلسطينيين المقدر في العالم حسب دولة الإقامة نهاية عام 2006

Table 1: Estimated Palestinian Population in the World by Reside Country, End Year 2006

Country	Palestinians الفلسطينيون		الدولة
	Percent النسبة	Number العدد	
Palestinian Territory	39.2	3,952,354	الأراضي الفلسطينية
Israel	11.2	1,134,293	إسرائيل
Jordan	27.7	2,799,440	الأردن
Other Arab Countries	16.2	1,635,486	الدول العربية الأخرى
Foreign Countries	5.7	572,992	الدول الأجنبية
<b>Total</b>	<b>100</b>	<b>10,094,565</b>	<b>المجموع</b>

جدول 2: عدد السكان الفلسطينيين المقدر في الأراضي الفلسطينية حسب حالة اللجوء والمنطقة نهاية عام 2006

Table 2: Estimated Palestinian Population in the Palestinian Territory by Refugee Status and Region, End Year 2006

Region	المجموع Total	Refugee Status حالة اللجوء		المنطقة
		غير لاجئ Non-Refugee	لاجئ Refugee	
<b>Palestinian Territory</b>	<b>3,952,354</b>	<b>2,219,553</b>	<b>1,732,801</b>	<b>الأراضي الفلسطينية</b>
West Bank	2,480,762	1,766,303	714,459	الضفة الغربية
Gaza Strip	1,471,592	453,250	1,018,342	قطاع غزة

جدول 3: عدد السكان المقدر في الأراضي الفلسطينية حسب المحافظة، نهاية عام 2006

Table 3: Projected Population in the Palestinian Territory by Governorate, End Year 2006

Governorate/ District	النسبة Percent	عدد السكان Number of Population	المنطقة /المحافظة
<b>Palestinian Territory</b>	<b>100</b>	<b>3,952,354</b>	الأراضي الفلسطينية
<b>West Bank</b>	<b>62.8</b>	<b>2,480,762</b>	الضفة الغربية
Jenin	6.7	265,528	جنين
Tubas District	1.2	48,871	منطقة طوباس
Tulkarm	4.4	175,244	طولكرم
Qalqiliya	2.5	99,113	قلقيلية
Salfit	1.7	65,133	سلفيت
Nablus	8.6	341,113	نابلس
Ramallah & Al-Bireh	7.5	295,364	رام الله والبيرة
Jerusalem	10.5	411,516	القدس
Jericho and Al Aghwar	1.1	44,290	أريحا والاعوار
Bethlehem	4.6	182,844	بيت لحم
Hebron	14.0	551,746	الخليل
<b>Gaza Strip</b>	<b>37.2</b>	<b>1,471,592</b>	<b>قطاع غزة</b>
North Gaza	7.2	284,512	شمال غزة
Gaza	13.0	514,852	غزة
Deir El-Balah	5.4	212,605	دير البلح
Khan Yunis	7.2	285,126	خانيونس
Rafah	4.4	174,497	رفح

جدول 4: عدد السكان المقدر في الأراضي الفلسطينية حسب العمر والمنطقة والجنس، نهاية عام 2006

Table 4: Projected Population in the Palestinian Territory by Age, Region and Sex, End Year 2006

Age	قطاع غزة			West Bank			الأراضي الفلسطينية			العمر
	إناث Females	ذكور Males	كلا الجنسين Both Sexes	إناث Females	ذكور Males	كلا الجنسين Both Sexes	إناث Females	ذكور Males	كلا الجنسين Both Sexes	
0-4	136,513	142,301	278,814	194,947	202,789	397,736	331,460	345,090	676,550	4-0
5-9	115,926	120,840	236,766	182,117	189,573	371,690	298,043	310,413	608,456	9-5
10-14	98,846	101,713	200,559	154,217	160,221	314,438	253,063	261,934	514,997	14-10
15-19	82,009	84,390	166,399	129,050	133,827	262,877	211,059	218,217	429,276	19-15
20-24	62,750	65,839	128,589	105,934	111,412	217,346	168,684	177,251	345,935	24-20
25-29	50,614	52,180	102,794	91,212	96,266	187,478	141,826	148,446	290,272	29-25
30-34	41,043	41,711	82,754	79,867	83,202	163,069	120,910	124,913	245,823	34-30
35-39	32,116	33,123	65,239	68,609	72,011	140,620	100,725	105,134	205,859	39-35
40-44	27,417	30,330	57,747	54,889	58,116	113,005	82,306	88,446	170,752	44-40
45-49	20,634	22,585	43,219	43,828	46,280	90,108	64,462	68,865	133,327	49-45
50-54	15,370	15,935	31,305	29,716	30,673	60,389	45,086	46,608	91,694	54-50
55-59	12,594	11,923	24,517	22,765	22,009	44,774	35,359	33,932	69,291	59-55
60-64	9,043	7,356	16,399	19,833	16,294	36,127	28,876	23,650	52,526	64-60
65-69	7,645	5,221	12,866	16,048	12,669	28,717	23,693	17,890	41,583	69-65
70-74	6,248	4,807	11,055	13,576	9,818	23,394	19,824	14,625	34,449	74-70
75-79	4,238	2,896	7,134	8,993	6,655	15,648	13,231	9,551	22,782	79-75
80+	3,119	2,317	5,436	7,485	5,861	13,346	10,604	8,178	18,782	+80
<b>Total</b>	<b>726,125</b>	<b>745,467</b>	<b>1,471,592</b>	<b>1,223,086</b>	<b>1,257,676</b>	<b>2,480,762</b>	<b>1,949,211</b>	<b>2,003,143</b>	<b>3,952,354</b>	<b>المجموع</b>

جدول 5: التوزيع النسبي للسكان في الأراضي الفلسطينية حسب العمر والمنطقة والجنس، نهاية عام 2006

Table 5: Percentage Distribution of Population in the Palestinian Territory by Age, Region and Sex, End Year 2006

Age	قطاع غزة Gaza Strip			الضفة الغربية West Bank			الأراضي الفلسطينية Palestinian Territory			العمر
	إناث Females	ذكور Males	كلا الجنسين Both Sexes	إناث Females	ذكور Males	كلا الجنسين Both Sexes	إناث Females	ذكور Males	كلا الجنسين Both Sexes	
0-4	18.8	19.1	18.9	15.9	16.1	16.0	17.0	17.2	17.1	4-0
5-9	16.0	16.2	16.1	14.9	15.1	15.0	15.3	15.5	15.4	9-5
10-14	13.6	13.6	13.6	12.6	12.7	12.7	13.0	13.1	13.0	14-10
15-19	11.3	11.3	11.3	10.6	10.6	10.6	10.8	10.9	10.9	19-15
20-24	8.6	8.8	8.7	8.7	8.9	8.8	8.7	8.8	8.8	24-20
25-29	7.0	7.0	7.0	7.5	7.6	7.6	7.3	7.4	7.3	29-25
30-34	5.7	5.6	5.6	6.5	6.6	6.6	6.2	6.2	6.2	34-30
35-39	4.4	4.4	4.4	5.6	5.7	5.6	5.2	5.3	5.2	39-35
40-44	3.8	4.1	3.9	4.5	4.6	4.5	4.2	4.4	4.3	44-40
45-49	2.8	3.0	2.9	3.6	3.7	3.6	3.3	3.4	3.4	49-45
50-54	2.1	2.1	2.1	2.4	2.4	2.4	2.3	2.3	2.3	54-50
55-59	1.7	1.6	1.7	1.9	1.8	1.8	1.8	1.7	1.8	59-55
60-64	1.3	1.0	1.1	1.6	1.3	1.5	1.5	1.2	1.3	64-60
65-69	1.1	0.7	1.0	1.3	1.0	1.2	1.2	0.9	1.1	69-65
70-74	0.9	0.7	0.8	1.1	0.9	1.0	1.0	0.7	0.9	74-70
75-79	0.5	0.4	0.5	0.7	0.5	0.6	0.7	0.6	0.6	79-75
80+	0.4	0.4	0.4	0.6	0.5	0.5	0.5	0.4	0.4	+80
<b>Total</b>	<b>100</b>	<b>100</b>	<b>100</b>	<b>100</b>	<b>100</b>	<b>100</b>	<b>100</b>	<b>100</b>	<b>100</b>	<b>المجموع</b>

جدول 6: عقود الزواج المسجلة في المحاكم الشرعية والكنائس في الأراضي الفلسطينية حسب المحافظة، 2005- 1998

Table 6: Registered Marriages at the Shari'a Courts and Churches in the Palestinian Territory by Governorate, 1998-2005

Governorate/ District	2005		2004		2003		2002		2001		2000		1999		1998		المحافظة/ المنطقة
	النسبة Percent	العدد Number	النسبة Percent	العدد Number	النسبة Percent	العدد Number	النسبة Percent	العدد Number	النسبة Percent	العدد Number	النسبة Percent	العدد Number	النسبة Percent	العدد Number	النسبة Percent	العدد Number	
<b>Palestinian Territory</b>	<b>100</b>	<b>28,876</b>	<b>100</b>	<b>27,634</b>	<b>100</b>	<b>26,267</b>	<b>100</b>	<b>22,611</b>	<b>100</b>	<b>24,635</b>	<b>100</b>	<b>23,890</b>	<b>100</b>	<b>24,874</b>	<b>100</b>	<b>24,400</b>	الأراضي الفلسطينية
<b>West Bank</b>	<b>57.8</b>	<b>16,706</b>	<b>56.3</b>	<b>15,551</b>	<b>56.3</b>	<b>14,782</b>	<b>54.5</b>	<b>12,319</b>	<b>58.8</b>	<b>14,483</b>	<b>62.2</b>	<b>14,867</b>	<b>64.7</b>	<b>16,099</b>	<b>66.7</b>	<b>16,285</b>	الضفة الغربية
Jenin	7.0	2,010	6.7	1,861	6.8	1,789	5.9	1,323	6.9	1,693	7.6	1,830	7.7	1,916	7.6	1,856	جنين
Tubas District	1.6	448	1.3	353	1.4	374	1.6	360	1.3	334	1.6	375	1.7	416	1.7	422	منطقة طوباس
Tulkarm	4.7	1,351	4.2	1,164	4.6	1,204	3.2	718	4.2	1,026	4.5	1,078	4.9	1,231	4.8	1,172	طولكرم
Qalqiliya	2.5	729	2.1	592	1.4	374	1.4	315	1.8	441	2.3	543	2.3	563	2.3	551	قلقيلية
Salfit	1.5	447	1.7	479	1.9	487	2.3	515	1.9	471	1.9	452	2.1	522	2.1	513	سلفيت
Nablus	8.2	2,365	8.4	2,307	7.8	2,060	5.5	1,241	7.8	1,919	9.1	2,164	9.4	2,342	9.6	2,352	نابلس
Ramallah & Al-Bireh	6.7	1,947	6.3	1,735	6.3	1,649	5.1	1,169	6.7	1,653	7.2	1,727	8.1	2,008	8.1	1,982	رام الله والبيرة
Jerusalem	8.7	2,511	8.8	2,435	9.5	2,502	11.1	2,506	10.2	2,525	9.7	2,330	10.0	2,482	9.9	2,420	القدس
Jericho and Al Aghwar	0.9	271	0.9	242	1.0	268	1.0	234	0.9	221	1.0	245	0.9	241	1.0	235	أريحا والأغوار
Bethlehem	2.1	605	1.9	531	2.4	617	2.9	651	3.9	956	4.4	1,042	3.8	933	4.1	990	بيت لحم
Hebron	13.9	4,022	14.0	3,852	13.2	3,458	14.5	3,287	13.2	3,244	12.9	3,081	13.8	3,445	15.5	3,792	الخليل
<b>Gaza Strip</b>	<b>42.2</b>	<b>12,170</b>	<b>43.7</b>	<b>12,083</b>	<b>43.7</b>	<b>11,485</b>	<b>45.5</b>	<b>10,292</b>	<b>41.2</b>	<b>10,152</b>	<b>37.8</b>	<b>9,023</b>	<b>35.3</b>	<b>8,775</b>	<b>33.3</b>	<b>8,115</b>	قطاع غزة
North Gaza	7.7	2,211	7.5	2,064	7.7	2,020	8.0	1,800	7.1	1,748	7.5	1,783	6.1	1,525	5.4	1,309	شمال غزة
Gaza	15.9	4,592	16.5	4,582	16.5	4,324	16.9	3,814	14.9	3,662	11.5	2,756	12.3	3,055	12.6	3,076	غزة
Deir El-Balah	5.6	1,605	5.9	1,632	5.8	1,537	6.0	1,363	5.4	1,323	5.1	1,219	5.0	1,250	4.3	1,049	دير البلح
Khan Yunis	8.1	2,352	8.8	2,421	8.7	2,293	9.1	2,062	9.0	2,218	8.8	2,104	7.6	1,876	7.1	1,729	خان يونس
Rafah	4.9	1,410	5.0	1,384	5.0	1,311	5.5	1,253	4.9	1,201	4.9	1,161	4.3	1,069	3.9	952	رفح

جدول 7: وقوعات الطلاق المسجلة في الأراضي الفلسطينية حسب المحافظة، 2005-1998  
 Table 7: Registered Divorces in the Palestinian Territory by Governorate, 1998-2005

Governorate/ District	2005		2004		2003		2002		2001		2000		1999		1998		المحافظة/ المنطقة
	النسبة Percent	العدد Number	النسبة Percent	العدد Number	النسبة Percent	العدد Number	النسبة Percent	العدد Number	النسبة Percent	العدد Number	النسبة Percent	العدد Number	النسبة Percent	العدد Number	النسبة Percent	العدد Number	
<b>Palestinian Territory</b>	<b>100</b>	<b>4,211</b>	<b>100</b>	<b>3,961</b>	<b>100</b>	<b>3,909</b>	<b>100</b>	<b>3,046</b>	<b>100</b>	<b>3,687</b>	<b>100</b>	<b>3,546</b>	<b>100</b>	<b>3,761</b>	<b>100</b>	<b>3,465</b>	الأراضي الفلسطينية
<b>West Bank</b>	<b>58.6</b>	<b>2,466</b>	<b>58.2</b>	<b>2,304</b>	<b>60.4</b>	<b>2,360</b>	<b>58.3</b>	<b>1,776</b>	<b>59.9</b>	<b>2,207</b>	<b>59.8</b>	<b>2,120</b>	<b>63.5</b>	<b>2,388</b>	<b>63.9</b>	<b>2,213</b>	الضفة الغربية
Jenin	5.9	248	5.9	235	5.8	226	5.1	155	6.1	224	6.4	226	4.9	186	5.1	176	جنين
Tubas District	0.7	31	1.0	38	1.0	39	1.3	38	1.4	50	1.3	46	1.0	39	0.9	31	منطقة طوباس
Tulkarm	5.8	245	5.5	218	5.4	211	4.8	146	4.8	177	5.5	196	5.9	223	6.3	219	طولكرم
Qalqiliya	2.5	104	2.5	98	2.6	104	1.5	47	2.4	87	2.4	87	3.4	126	2.5	85	قلقيلية
Salfit	1.1	48	1.8	70	1.5	57	1.7	51	1.1	41	1.6	55	1.5	55	1.7	60	سلفيت
Nablus	9.8	412	8.4	331	8.8	346	7.1	217	9.2	339	9.1	324	10.6	398	10.0	344	نابلس
Ramallah & Al-Bireh	10.9	457	11.4	450	11.0	429	10.0	303	12.1	446	10.9	386	12.0	452	12.6	437	رام الله والبيرة
Jerusalem	7.5	316	6.9	272	9.6	374	12.5	381	8.9	329	9.6	339	9.8	369	10.0	345	القدس
Jericho and Al Aghwar	1.3	54	2.9	115	1.0	39	1.3	40	1.5	57	1.9	67	1.4	53	1.5	53	أريحا والأغوار
Bethlehem	3.2	134	1.1	44	3.4	132	2.8	86	3.2	117	3.1	111	4.3	160	4.6	160	بيت لحم
Hebron	9.9	417	10.8	433	10.3	403	10.2	312	9.2	340	8.0	283	8.7	327	8.7	303	الخليل
<b>Gaza Strip</b>	<b>41.4</b>	<b>1,745</b>	<b>41.8</b>	<b>1,657</b>	<b>39.6</b>	<b>1,549</b>	<b>41.7</b>	<b>1,270</b>	<b>40.1</b>	<b>1,480</b>	<b>40.2</b>	<b>1,426</b>	<b>36.5</b>	<b>1,373</b>	<b>36.1</b>	<b>1,252</b>	قطاع غزة
North Gaza	7.2	302	7.9	314	6.9	272	8.9	272	7.6	281	7.5	266	6.1	231	6.1	211	شمال غزة
Gaza	16.5	701	17.2	680	16.0	626	14.1	428	15.5	570	14.8	524	13.9	523	14	487	غزة
Deir El-Balah	5.9	247	5.6	221	5.5	214	5.8	178	5.4	200	5.4	191	6.8	256	5.1	176	دير البلح
Khan Yunis	6.8	285	6.9	275	7.8	306	8.0	243	7.8	286	7.4	262	5.3	198	6.4	222	خانيونس
Rafah	5.0	210	4.2	167	3.4	131	4.9	149	3.9	143	5.1	183	4.4	165	4.5	156	رفح

جدول 8: معدل الزواج الخام في الأراضي الفلسطينية حسب المنطقة، 2005-1998

Table 8: Crude Marriage Rate in the Palestinian Territory by Region, 1998-2005

Region	معدل الزواج الخام								المنطقة
	2005	2004	2003	2002	2001	2000	1999	1998	
<b>Palestinian Territory</b>	<b>7.7</b>	<b>7.6</b>	<b>7.5</b>	<b>6.7</b>	<b>7.5</b>	<b>7.6</b>	<b>8.2</b>	<b>8.4</b>	الأراضي الفلسطينية
West Bank	7.0	6.8	6.6	5.7	7.0	7.4	8.3	8.8	الضفة الغربية
Gaza Strip	8.8	9.0	8.9	8.3	8.5	7.9	8.1	7.8	قطاع غزة

جدول 9: معدل الطلاق الخام في الأراضي الفلسطينية حسب المنطقة، 2005-1998

Table 9: Crude Divorce Rate in the Palestinian Territory by Region, 1998-2005

Region	معدل الطلاق الخام								المنطقة
	2005	2004	2003	2002	2001	2000	1999	1998	
<b>Palestinian Territory</b>	<b>1.1</b>	<b>1.1</b>	<b>1.1</b>	<b>0.9</b>	<b>1.1</b>	<b>1.1</b>	<b>1.2</b>	<b>1.2</b>	الأراضي الفلسطينية
West Bank	1.0	1.0	1.1	0.8	1.1	1.1	1.2	1.2	الضفة الغربية
Gaza Strip	1.3	1.2	1.2	1.0	1.2	1.3	1.3	1.2	قطاع غزة

جدول 10: ملخص للمؤشرات الديمغرافية في الأراضي الفلسطينية حسب المنطقة، 2006-1997  
 Table 10: Demographic Indicators in the Palestinian Territory by Region, 1997-2006

Indicator	السنة										المؤشر
	2006	2005	2004	2003	2002	2001	2000	1999	1998	1997	
<b>Palestinian Territory</b>											<b>الأراضي الفلسطينية</b>
Sex Ratio	102.8	102.7	102.6	102.5	102.4	102.3	102.2	102.1	102.0	101.9	نسبة الجنس
Dependency Ratio	94.2	96.3	97.6	98.6	99.5	100.0	100.6	101.0	101.3	101.3	نسبة الإعالة
Median Age	16.9	16.7	16.6	16.6	16.5	16.5	16.4	16.4	16.4	16.4	العمر الوسيط
Crude Birth Rate	36.7	37.3	38.1	38.8	39.6	40.2	40.9	41.4	42.1	42.7	معدل المواليد الخام
Crude Death Rate	3.9	4.0	4.1	4.2	4.3	4.4	4.5	4.6	4.8	4.9	معدل الوفيات الخام
Natural Increase Rate	3.3	3.3	3.4	3.4	3.5	3.6	3.6	3.7	3.7	3.8	معدل الزيادة الطبيعية
Total Fertility Rate	..	..	..	4.6	..	..	..	5.9	..	6.0	معدل الخصوبة الكلي
Life Expectancy at Birth:											توقع البقاء على قيد الحياة:
Males	71.7	71.7	71.4	71.2	71.1	70.9	70.7	70.6	70.4	70.2	ذكور
Females	73.2	73.0	72.9	72.7	72.6	72.4	72.2	72.1	71.9	71.7	إناث
Marriages Registered	..	28,876	27,634	26,267	22,611	24,635	23,890	24,874	24,400	23,492	أعداد عقود الزواج
Crude Marriage Rate	..	7.7	7.6	7.5	6.7	7.5	7.6	8.2	8.4	8.4	معدل الزواج الخام
Divorces Registered	..	4,211	3,961	3,909	3,046	3,687	3,546	3,761	3,465	3,449	أعداد وقوعات الطلاق
Crude Divorce Rate	..	1.1	1.1	1.1	0.9	1.1	1.1	1.2	1.2	1.2	معدل الطلاق الخام
Average Household Size	6.0	5.9	5.7	6.1	6.4	6.5	6.1	6.4	..	6.4	متوسط حجم الأسرة
<b>West Bank</b>											<b>الضفة الغربية</b>
Sex Ratio	102.8	102.7	102.7	102.6	102.5	102.5	102.2	102.2	102.0	102.1	نسبة الجنس
Dependency Ratio	88.5	90.6	91.7	92.6	93.4	93.9	94.3	94.6	94.7	94.7	نسبة الإعالة
Median Age	17.8	17.7	17.6	17.5	17.4	17.4	17.4	17.4	17.4	17.4	العمر الوسيط
Crude Birth Rate	33.7	34.5	35.4	36.3	37.3	38.0	38.8	39.6	40.4	41.2	معدل المواليد الخام
Crude Death Rate	4.0	4.1	4.2	4.3	4.4	4.5	4.6	4.8	4.9	5.1	معدل الوفيات الخام
Natural Increase Rate	3.0	3.0	3.1	3.2	3.3	3.4	3.4	3.5	3.6	3.6	معدل الزيادة الطبيعية
Total Fertility Rate	..	..	..	4.1	..	..	..	5.5	..	5.6	معدل الخصوبة الكلي



جدول 10: ملخص للمؤشرات الديمغرافية في الأراضي الفلسطينية حسب المنطقة، 2006-1997  
Table 10: Demographic Indicators in the Palestinian Territory by Region, 1997-2006

Indicator	السنة										المؤشر
	2006	2005	2004	2003	2002	2001	2000	1999	1998	1997	
Life Expectancy at Birth:											توقع البقاء على قيد الحياة:
Males	71.9	71.7	71.6	71.4	71.3	71.1	71	70.8	70.6	70.4	ذكور
Females	37.6	73.4	73.3	73.1	73.0	72.8	72.6	72.5	72.3	72.2	إناث
Marriages Registered	..	16,706	15,551	14,782	12,319	14,483	14,867	16,099	16,285	15,883	أعداد عقود الزواج
Crude Marriage Rate	..	7.0	6.8	6.6	5.7	7.0	7.4	8.3	8.8	8.9	معدل الزواج الخام
Divorces Registered	..	2,456	2,304	2,360	1,776	2,207	2,120	2,388	2,213	2,143	أعداد وقوعات الطلاق
Crude Divorce Rate	..	1.0	1.0	1.1	0.8	1.1	1.1	1.2	1.2	1.2	معدل الطلاق الخام
Average Household Size	5.7	5.8	5.5	5.8	6.1	6.5	5.7	6.2	..	6.1	متوسط حجم الأسرة
<b>Gaza Strip</b>											<b>قطاع غزة</b>
Sex Ratio	102.7	102.5	102.4	102.4	102.3	101.8	101.7	101.6	101.5	101.5	نسبة الجنس
Dependency Ratio	104.7	107	108.6	109.9	111.1	111.9	112.8	113.6	114.1	114.5	نسبة الإعالة
Median Age	15.5	15.4	15.2	15.1	15.0	15.0	14.9	14.9	14.8	14.8	العمر الوسيط
Crude Birth Rate	41.7	42.2	42.8	43.3	43.8	44.1	44.5	44.7	45.1	45.4	معدل المواليد الخام
Crude Death Rate	3.8	3.9	3.9	4.0	4.1	4.2	4.3	4.4	4.6	4.7	معدل الوفيات الخام
Natural Increase Rate	3.8	3.8	3.9	3.9	4.0	4.0	4.0	4.0	4.1	4.1	معدل الزيادة الطبيعية
Total Fertility Rate	..	..	..	5.8	..	..	..	6.8	..	6.9	معدل الخصوبة الكلي
Life Expectancy at Birth:											توقع البقاء على قيد الحياة:
Males	71.4	71.2	71.1	70.9	70.8	70.6	70.4	70.2	70.1	69.9	ذكور
Females	72.5	72.3	72.2	72.0	71.9	71.7	71.5	71.3	71.2	71	إناث
Marriages Registered	..	12,170	12,083	11,485	10,292	10,152	9,023	8,775	8,115	7,609	أعداد عقود الزواج
Crude Marriage Rate	..	8.8	9.0	8.9	8.3	8.5	7.9	8.1	7.8	7.6	معدل الزواج الخام
Divorces Registered	..	1,745	1,657	1,549	1,270	1,480	1,426	1,373	1,252	1,306	أعداد وقوعات الطلاق
Crude Divorce Rate	..	1.3	1.2	1.2	1.0	1.2	1.3	1.3	1.2	1.3	معدل الطلاق الخام
Average Household Size	6.6	6.2	6.2	6.8	6.8	7.0	6.9	6.8	..	6.9	متوسط حجم الأسرة

(..): Means Not Available

(..): تعني غير متوفر