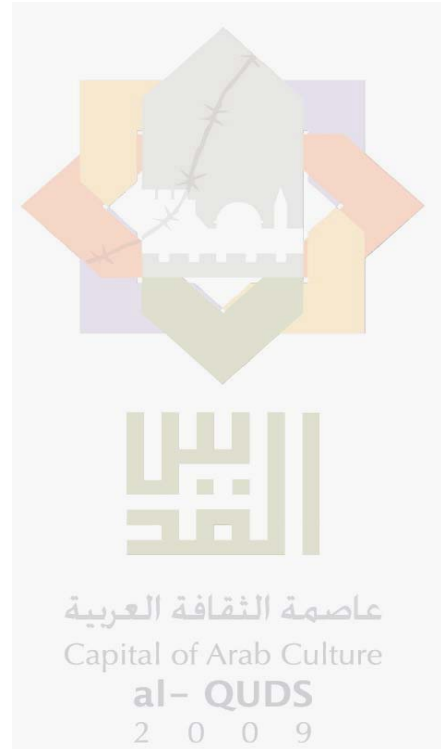
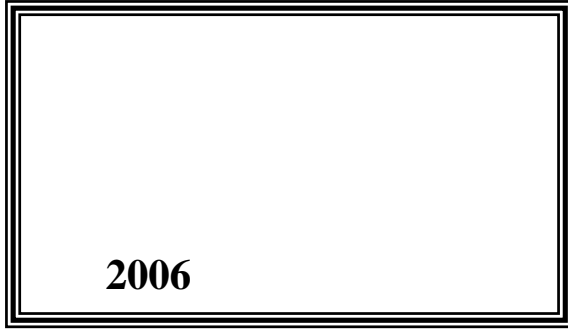


(2008 )

2008 /



© 1429 - 2008

:

)

2008

2008

:

1647

2 242 6340 (970/972) :

2 242 6343 (970/972) :

diwan@pcbs.gov.ps :

http://www.pcbs.gov.ps :

<hr/>		<hr/>
<b>5</b>	(2008 )	.1
<b>9</b>		.2
<b>11</b>		.3



1997

2008

2008

.2008

:

%27.3 2008

2008

%5.8 2008

.%17.7

2007

.%23.6 2006

.%21.5 2007

2007

2007

2007

2008

-2000

(3,761,646)

2007



(2008 )

2008

%1.7

2008

( )

2008

2007

2008

2008

%0.7

2008

2008

2008

%3.6

2007

%1.7

.1997

278.8

2008

%2.4

2008

.2007

%6.9

2008

:

2007

2008

-

%23.7

.2007

%36.4

%0.8

2008

-

.2007

%1.1

2008

%2.4

-

.2007

%34.9

2008				-
.2007		%0.7	%0.4	
2008		%28.6		-
			%10.4	.2007
2008				-
.2007		%7.4	%3.8	
2008				-
	%14.1	%12.4		.2007
				-
		%17.3		2008
			.2007	2008
2008				-
%.19.5	2007		%17.8	
2008		%1.5		-
.2007			%2.3	
2008		%5.9		-
.2007			%9.7	
2008				-
%7.0			%5.3	
			.2007	
)				
%2.2		(2008	2007	
%2.6	2008		%3.1	2007
				2008

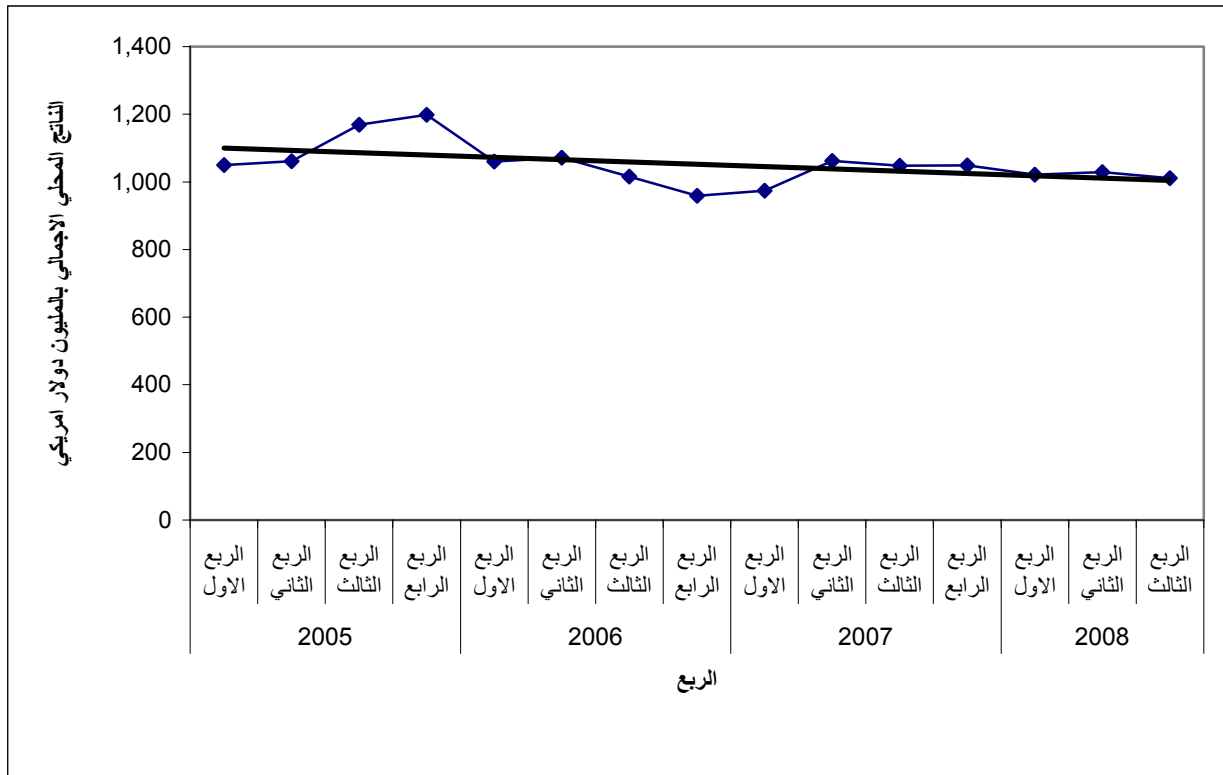


	2008		%1.3	2007		%1.0
				.2008		%1.0
	%10.7	2007		%10.3		
		2008		%11.0		2008
2008		%10.2	2007		%9.9	
			.2008		%10.4	
	2008		%4.9	2007		%4.6
				.2008		%5.2
%8.0	2007		%12.1			
	2008		%8.9		2008	
2008		%8.0	2007		%8.1	
			2008		%8.3	
	2008		%3.0	2007		%3.4
				.2008		%3.2
%6.9	2007		%8.2			
	.2008		%5.4		2008	
	%1.6	2007		%2.4		
	%0.5				2008	
			.2008		%0.4	2007
2008		2007		%12.6		
			2008		%12.2	
	%8.4	2008		2007		%9.4
						.2008
2008		2007		%1.7		
			.2008		%1.8	

.2008-2005

2008-2005

:(1)



:  
: (SNA'93)  
:(Institutional Unit- Enterprise) - -  
) :(Establishment) -  
(  
:  
:  
:  
( )  
:  
:

:

:

:

.1967

:

:(1)

1997 : 2008

**Table (1): GDP and Percentage Contribution in the Remaining West Bank and Gaza Strip by Economic Activity, Third Quarter 2008 at Constant Prices: (1997 is the Base Year)**

Value in million US\$

Economic Activity	(%) Percentage Contribution(%)	GDP*	
<b>Agriculture and fishing</b>	<b>5.4</b>	<b>54.4</b>	
<b>Mining, manufacturing, electr. and water</b>	<b>13.2</b>	<b>132.6</b>	
Mining and quarrying	0.4	4.1	
Manufacturing	11.0	110.7	
Electricity and water supply	1.8	17.8	
<b>Construction</b>	<b>1.6</b>	<b>16.4</b>	
<b>Wholesale and retail trade</b>	<b>10.4</b>	<b>104.9</b>	
<b>Transport, Storage and Communications</b>	<b>8.9</b>	<b>90.4</b>	
<b>Financial intermediation</b>	<b>5.2</b>	<b>52.3</b>	
<b>Other services</b>	<b>23.5</b>	<b>237.4</b>	
Real estate, renting and business services	8.4	84.6	
Community, social and personal services	1.0	10.6	
Hotels and restaurants	2.6	26.3	
Education	8.3	83.4	
Health and social work	3.2	32.5	
<b>Public administration and defense</b>	<b>12.2</b>	<b>122.9</b>	
<b>Households with employed persons</b>	<b>0.2</b>	<b>2.0</b>	
Less: FISIM	-3.6	-35.3	:
Plus: Customs duties	8.0	81.4	:
Plus: VAT on imports, net	15.0	151.3	:
<b>Quarterly Gross Domestic Product</b>	<b>100</b>	<b>1,010.7</b>	

\* Flash Estimates

( )

\*

1997

:

2008 - 2007

:(2)

**Table (2): GDP in the Remaining West Bank and Gaza Strip by Economic Activity and Quarter for the Years 2007-2008 at Constant Prices:  
(1997 is the Base Year)**

Value in million US\$

Economic Activity	2008			2007				
	* Q III	** Q II	*** Q I	Q IV	Q III	Q II	Q I	
<b>Agriculture and fishing</b>	<b>54.4</b>	<b>71.3</b>	<b>67.7</b>	<b>82.3</b>	<b>85.5</b>	<b>96.3</b>	<b>76.7</b>	
<b>Mining, manufacturing, electr. and water</b>	<b>132.6</b>	<b>131.6</b>	<b>130.3</b>	<b>131.3</b>	<b>131.1</b>	<b>132.1</b>	<b>132.8</b>	
Mining and quarrying	4.1	4.5	4.3	5.3	5.4	5.5	5.1	
Manufacturing	110.7	109.5	108.6	108.6	108.3	109.1	110.0	
Electricity and water supply	17.8	17.6	17.4	17.4	17.4	17.5	17.7	
<b>Construction</b>	<b>16.4</b>	<b>16.8</b>	<b>16.4</b>	<b>21.5</b>	<b>25.2</b>	<b>30.4</b>	<b>26.7</b>	
<b>Wholesale and retail trade</b>	<b>104.9</b>	<b>105.3</b>	<b>113.6</b>	<b>104.5</b>	<b>104.2</b>	<b>104.5</b>	<b>98.3</b>	
<b>Transport, Storage and Communications</b>	<b>90.4</b>	<b>81.9</b>	<b>92.8</b>	<b>126.7</b>	<b>126.6</b>	<b>112.6</b>	<b>112.6</b>	
<b>Financial intermediation</b>	<b>52.3</b>	<b>50.4</b>	<b>47.6</b>	<b>50.9</b>	<b>48.7</b>	<b>47.6</b>	<b>45.3</b>	
<b>Other services</b>	<b>237.4</b>	<b>254.7</b>	<b>246.7</b>	<b>255.8</b>	<b>252.5</b>	<b>230.9</b>	<b>166.9</b>	
Real estate, renting and business services	84.6	96.6	95.7	99.7	98.5	89.3	55.7	
Community, social and personal services	10.6	13.2	13.2	12.2	10.6	10.6	10.5	
Hotels and restaurants	26.3	32.0	25.4	19.5	22.0	16.2	10.1	
Education	83.4	82.2	83.8	87.7	85.4	80.7	61.0	
Health and social work	32.5	30.7	28.6	36.7	36.0	34.1	29.6	
<b>Public administration and defense</b>	<b>122.9</b>	<b>129.8</b>	<b>136.2</b>	<b>148.4</b>	<b>132.1</b>	<b>145.0</b>	<b>144.5</b>	
<b>Households with employed persons</b>	<b>2.0</b>	<b>2.5</b>	<b>2.5</b>	<b>2.3</b>	<b>2.1</b>	<b>2.1</b>	<b>2.1</b>	
Less: FISIM	-35.3	-34.7	-34.3	-36.3	-35.0	-34.8	-33.7	:
Plus: Customs duties	81.4	69.2	62.9	76.9	76.0	68.3	62.9	:
Plus: VAT on imports, net	151.3	149.8	138.7	84.7	99.1	127.5	138.7	:
<b>Gross Domestic Product</b>	<b>1,010.7</b>	<b>1,028.6</b>	<b>1,021.1</b>	<b>1,049.0</b>	<b>1,048.1</b>	<b>1,062.5</b>	<b>973.8</b>	

\* Flash Estimates \*\* First Revision \*\*\* Second Revision

\*\*\* \*\* ( ) \*

1997 : 2008 -2007

:(3)

**Table (3): Percentage Contribution to GDP in the Remaining West Bank and Gaza Strip by Economic Activity and Quarter for the Years 2007-2008 at Constant Prices: (1997 is the Base Year)**

Economic Activity	2008			2007				
	*	**	***					
	Q III	Q II	Q I	Q IV	Q III	Q II	Q I	
<b>Agriculture and fishing</b>	5.4	6.9	6.6	7.8	8.2	9.1	7.9	
<b>Mining, manufacturing, electr. and water</b>	13.2	12.8	12.7	12.5	12.5	12.4	13.6	
Mining and quarrying	0.4	0.4	0.4	0.5	0.5	0.5	0.5	
Manufacturing	11.0	10.7	10.6	10.4	10.3	10.3	11.3	
Electricity and water supply	1.8	1.7	1.7	1.7	1.7	1.6	1.8	
<b>Construction</b>	1.6	1.6	1.6	2.0	2.4	2.9	2.7	
<b>Wholesale and retail trade</b>	10.4	10.2	11.1	10.0	9.9	9.8	10.1	
<b>Transport, Storage and Communications</b>	8.9	8.0	9.1	12.1	12.1	10.6	11.6	
<b>Financial intermediation</b>	5.2	4.9	4.7	4.9	4.6	4.5	4.7	
<b>Other services</b>	23.5	24.8	24.2	24.4	24.1	21.7	17.1	
Real estate, renting and business services	8.4	9.4	9.4	9.5	9.4	8.4	5.7	
Community, social and personal services	1.0	1.3	1.3	1.2	1.0	1.0	1.1	
Hotels and restaurants	2.6	3.1	2.5	1.9	2.1	1.5	1.0	
Education	8.3	8.0	8.2	8.4	8.1	7.6	6.3	
Health and social work	3.2	3.0	2.8	3.5	3.4	3.2	3.0	
<b>Public administration and defense</b>	12.2	12.6	13.4	14.1	12.6	13.6	14.8	
<b>Households with employed persons</b>	0.2	0.2	0.2	0.2	0.2	0.2	0.2	
Less: FISIM	-3.6	-3.4	-3.4	-3.5	-3.3	-3.3	-3.5	:
Plus: Customs duties	8.0	6.7	6.2	7.3	7.2	6.4	6.5	:
Plus: VAT on imports, net	15.0	14.7	13.6	8.1	9.5	12.0	14.2	:
<b>Gross Domestic Product</b>	<b>100</b>	<b>100</b>	<b>100</b>	<b>100</b>	<b>100</b>	<b>100</b>	<b>100</b>	

\* Flash Estimates \*\* First Revision \*\*\* Second Revision

\*\*\* \*\* ( ) \*

1997 : 2008-2007 : (4)

**Table (4): GDP Per Capita by the Quarters of Years 2007- 2008 at Constant Prices:  
(1997 is the Base Year)**

Value in US\$

Quarter \ Year	2008	2007	
First Quarter	***285.7	274.5	
Second Quarter	**285.8	301.5	
Third Quarter	*278.8	299.5	
Fourth Quarter	-	301.9	
<b>Annual Estimate</b>	-	<b>1,177.4</b>	

(-) Data is not available

\* Flash Estimates

\*\* First Revision

\*\*\* Second Revision

(-)

\*

\*\*

\*\*\*



1997

:

2007 -1999

:(5)

**Table (5): GDP in the Remaining West Bank and Gaza Strip by Economic Activity for the Years 1999- 2007 at Constant Prices:  
(1997 is the Base Year)**

Value in million US\$

Economic Activity	**2007	*2006	2005	2004	2003	2002	2001	2000	1999
<b>Agriculture and fishing</b>	<b>340.8</b>	<b>334.0</b>	<b>289.8</b>	<b>338.6</b>	<b>297.6</b>	<b>251.3</b>	<b>340.8</b>	<b>403.6</b>	<b>470.7</b>
<b>Mining, manufacturing, electr. and water</b>	<b>527.3</b>	<b>531.1</b>	<b>698.4</b>	<b>736.5</b>	<b>657.8</b>	<b>534.7</b>	<b>616.8</b>	<b>545.6</b>	<b>655.5</b>
Mining and quarrying	21.3	18.0	61.6	64.9	45.9	25.2	21.2	23.8	35.7
Manufacturing	436.0	444.0	495.8	531.2	470.7	385.9	471.7	472.4	566.4
Electricity and water supply	70.0	69.1	141.0	140.4	141.2	123.6	123.9	49.4	53.4
<b>Construction</b>	<b>103.8</b>	<b>104.0</b>	<b>343.6</b>	<b>288.0</b>	<b>187.2</b>	<b>127.7</b>	<b>205.4</b>	<b>366.3</b>	<b>616.9</b>
<b>Wholesale and retail trade</b>	<b>411.6</b>	<b>382.7</b>	<b>421.4</b>	<b>404.2</b>	<b>385.4</b>	<b>408.9</b>	<b>382.8</b>	<b>504.9</b>	<b>537.8</b>
<b>Transport, Storage and Communications</b>	<b>478.5</b>	<b>466.0</b>	<b>247.3</b>	<b>238.5</b>	<b>229.9</b>	<b>183.9</b>	<b>209.4</b>	<b>221.0</b>	<b>231.0</b>
<b>Financial intermediation</b>	<b>192.5</b>	<b>186.7</b>	<b>215.8</b>	<b>159.0</b>	<b>154.2</b>	<b>136.3</b>	<b>134.4</b>	<b>181.7</b>	<b>169.1</b>
<b>Other services</b>	<b>906.1</b>	<b>940.2</b>	<b>1,036.2</b>	<b>946.6</b>	<b>927.9</b>	<b>862.6</b>	<b>896.1</b>	<b>1,050.4</b>	<b>990.8</b>
Real estate, renting and business services	343.2	447.8	427.6	411.1	396.3	376.1	404.1	534.0	444.3
Community, social and personal services	43.9	43.6	67.1	52.5	51.6	33.5	28.6	29.9	28.3
Hotels and restaurants	67.8	67.0	75.4	61.6	73.0	84.2	87.7	136.0	128.0
Education	314.8	255.3	342.1	295.3	284.7	260.9	269.4	242.2	262.4
Health and social work	136.4	126.5	124.0	126.1	122.3	107.9	106.3	108.3	127.8
<b>Public administration and defense</b>	<b>570.0</b>	<b>552.7</b>	<b>751.7</b>	<b>693.5</b>	<b>633.6</b>	<b>545.6</b>	<b>663.7</b>	<b>518.4</b>	<b>497.7</b>
<b>Households with employed persons</b>	<b>8.6</b>	<b>8.7</b>	<b>2.3</b>	<b>3.6</b>	<b>8.2</b>	<b>7.4</b>	<b>7.5</b>	<b>9.3</b>	<b>8.7</b>
Less: FISIM	-139.8	-138.3	-121.4	-117.5	-114.3	-99.6	-114.3	-154.3	129.5-
Plus: Customs duties	284.0	284.9	230.3	173.4	166.5	87.4	170.0	196.7	208.6
Plus: VAT on imports, net	450.0	454.3	363.4	332.3	215.6	217.9	252.6	274.9	254.4
<b>Gross Domestic Product</b>	<b>4,133.4</b>	<b>4,107.0</b>	<b>4,478.8</b>	<b>4,196.7</b>	<b>3,749.6</b>	<b>3,264.1</b>	<b>3,765.2</b>	<b>4,118.5</b>	<b>4,511.7</b>

\* Second Revision \*\* First Revision

\*\*

\*

