



Palestinian Producer Price Index, Increase in the PPI during January 2012

The overall Producer Price¹ Index (PPI) for the Palestinian Territory with its base month (January 2011=100) reached 100.59 in January 2012, it increased by 1.23% compared to December 2011.

Producer Price Index for exported products (January 2011=100) reached 102.43 in January 2012, which indicates an increase by 0.79% compared to December 2011.

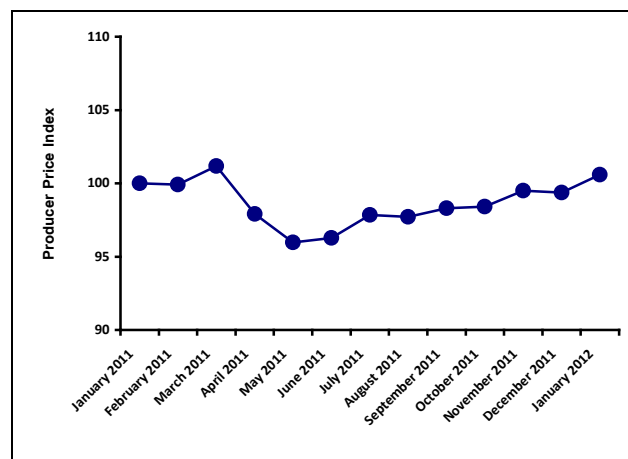
Producer Price Index for local consumed products (January 2011=100) reached 100.40 in January 2012, which indicates an increase by 1.27% compared to December 2011.

The changes of Producer Price Index for January 2012 is traced back to changes in prices of following major activities compared to the previous month:

Major Groups	%Change
Agriculture goods:	+ 2.23%
Fishing:	+ 7.57%
Mining and quarrying:	0.00%
Manufacturing group:	+ 0.70%

¹ The producer's price is the amount receivable by the producer from the purchaser for a unit of a good or service produced as output minus any VAT, or similar deductible tax, invoiced to the purchaser. The producer's prices exclude any transport charges invoiced separately by the producer.

The trend line for the Producer Price Index in the Palestinian Territory, for the period: January 2011 - January 2012 (Base Month January 2011=100)



**For more information, please contact:
Palestinian Central Bureau of Statistics
Ramallah, Palestine.**

Tel: (972/970) 2 2982700

Fax: (972/970) 2 2982710

Toll free.: 1800300300

E-Mail: diwan@pcbs.gov.ps

Web-Site: <http://www.pcbs.gov.ps>