

**Palestinian National Authority
Palestinian Central Bureau of Statistics**

**Labour Force Survey
(October-December, 2010) Round
(Q4/2010)**

**Press Release on the
Labour Force Survey Results**

22/2/2011

This document is prepared in accordance with the standard procedures stated in the Code of Practice for Palestine Official Statistics 2006

© February, 2011
All Rights Reserved.

Suggested Citation:

Palestinian Central Bureau of Statistics, 2011. *Labour Force Survey: (October-December, 2010) Round, (Q4/2010). Press Release on the Labour Force Survey Results.* Ramallah - Palestine.

All correspondence should be directed to:
Palestinian Central Bureau of Statistics
P.O.Box 1647, Ramallah, Palestine.

Tel: (972/970) 2 298 2700
Free No: 1800300300
Fax: (972/970) 2 298 2710
E-Mail :diwan@pcbs.gov.ps
Web-Site: <http://www.pcbs.gov.ps>

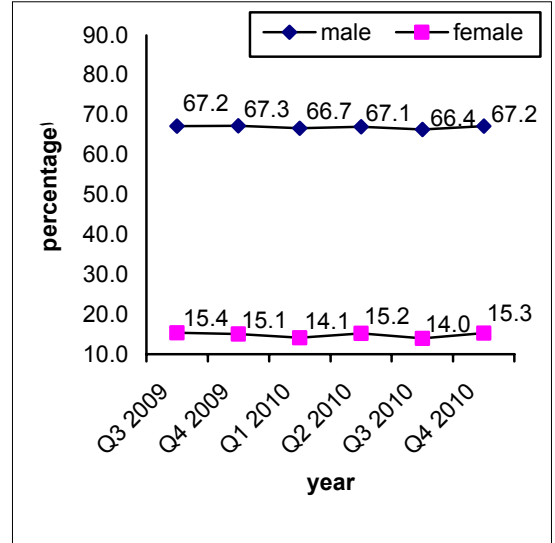
Press Release on the results of the Labour Force Survey (October- December, 2010) Round

**Unemployment Rate was the highest in Bethlehem among the West Bank Governorates,
While Khan Younis was the highest among Gaza Strip Governorates**

❖ **41.5% is the labor force participation rate of persons aged 15 years and above**

The number of persons participate in labour force was 1,001 thousand in the 4th quarter 2010; of whom 686 thousand in the West Bank and 315 thousand in Gaza Strip.

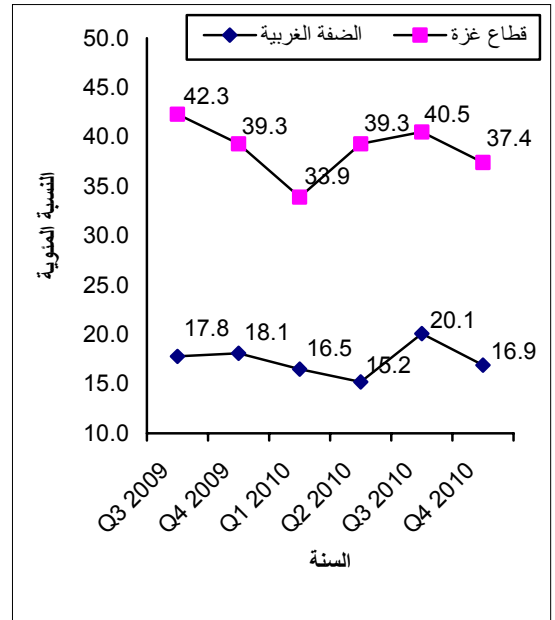
- The labour force participation rate in the West Bank reached 44.5%, while it was 36.3% in Gaza Strip.
- 67.2% is the participation rate for males, compared to 15.3% for females.
- 43.2% is the labour force participation rate for non-refugees in the Palestinian Territory, compared with 38.9% for refugees.



❖ **23.4% is the unemployment rate of participants in labour force**

Using ILO standards, the number of unemployed persons was 234 thousand; distributed to 116 thousand in the West Bank and 118 thousand in Gaza Strip.

- 37.4% is the unemployment rate in Gaza Strip, compared with 16.9% in the West Bank.
- 23.4% is the unemployment rate for males in the Palestinian Territory, compared to 23.2% for females.
- The highest unemployment rate in the 4th quarter 2010 was concentrated among youth aged 15-19 years where it reached 42.5%.
- The unemployment rate among females who completed 13 years of schooling or above was 31.4%.
- Bethlehem Governorate has the highest unemployment rate among the West Bank governorates where it amounted to 22.4%, compared with 50.6% for Khan Younis that recorded the highest unemployment rate among Gaza Strip governorates



- According to the relaxed definition of unemployment, the unemployment rate decreased from 33.3% in the 3rd quarter 2010 to 29.9% in the 4th quarter 2010.
- ❖ **Increase in the employment in the local market between the 3rd quarter and 4th quarter 2010**

Number of employed persons in the local market increased from 633 thousand in the 3rd quarter 2010 to 687 thousand in the 4th quarter 2010. The number of employed persons in the West Bank increased by 41 thousand compared with an increase of 13 thousand in Gaza Strip.

- The services sector was the highest employment sector in the local market where it reached 42.2%; distributed to 34.6% in West Bank and 61.3% in Gaza Strip.
- 24.6% of employed persons are in the public sector; of whom 48.0% in Gaza Strip and 16.5% in the West Bank.
- The average daily wage for wage employees in the West Bank reached 86.8 NIS compared with 59.9 NIS in Gaza Strip.
- The average work hours for wage employees in the West Bank decreased from 43.4 weekly work hour in the 3rd quarter 2010 to 43.2 in the 4th quarter 2010. The average monthly work days decreased from 22.4 work days to 22.1 at the same period. The average weekly work hours in Gaza Strip decreased from 39.9 work hours to 37.8 in the same period, while the average monthly work days increased from 23.2 days to 23.7 days in the same period.

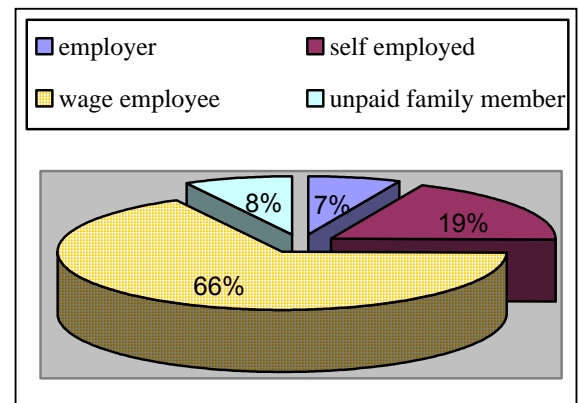
- ❖ **78,800 workers are employed in Israel and Israeli settlements in the 4th quarter 2010**

The number of employed persons from the West Bank in Israel and Israeli settlements increased from 75 thousand workers in the 3rd quarter 2010 to 79 thousand in the 4th quarter 2010, of whom 30 thousand have permit, 17 thousand without permit, 32 thousand workers have Israeli identity or foreign passport.

- Number of employed persons in Israeli settlements increased from 7 thousand workers in the 3rd quarter 2010 to 9 thousand workers in the 4th quarter 2010.
- About 50% of employed persons in Israel and Israeli settlements work in the construction sector.
- The average daily wage for employed persons in Israel and Israeli settlements increased from 154.7 NIS in the 3rd quarter 2010 to 160.5 NIS in the 4th quarter 2010.
- The average weekly work hours decreased from 39.4 weekly work hours in the 3rd quarter 2010 to 39.0 weekly work hours in the 4th quarter 2010. The average monthly work days decreased from 21.3 day in the 3rd quarter 2010 to 20.4 day in the 4th quarter 2010.

- ❖ **Employment status in the 4th quarter 2010**

About 68% of employed workers in the Palestinian Territory are wage employees. The West Bank comprises 64.0% of wage employees compared with 81.8% in the Gaza Strip.



- 17.6% of employed persons are self employed; of whom 19.3% in the West Bank and 12.4% in Gaza Strip.
 - 7.8% of employed persons are unpaid family members; of whom 9.7% in the West Bank and 2.6% in Gaza Strip.
 - 6.0% of employed persons are employers; of whom 7.0% in the West Bank and 3.2% in Gaza Strip.
- ❖ **Working benefits for wage employees in the private sector**
- 30.6% of wage employees are hired by contract, compared with 45.3% hired without contract.
 - 25.4% of wage employees have a contribution to the pension fund; 27.0% have annual paid vacation; 57.4% of women have a maternity paid vacation.
 - 16.7% of employed persons in the Palestinian Territory are affiliated to a vocational union; of whom 16.4% in the West Bank and 17.6% in Gaza strip.
- ❖ **3.3% is the percentage of employment of children (10-17) years in the Palestinian Territory**
- 3.3% of children aged (10-17 years) are employed in the Palestinian Territory; distributed to 5.1% in the West Bank and 0.4% in Gaza strip .

Concepts and Definitions

Man power

All persons in the West Bank and Gaza Strip aged 15 years and over.

Reference week:

The week ending on Friday preceding the interviewer's visit to the household.

Employed:

All persons are 15 years and over who were working at a paid job or business for at least one hour during the reference week, or who did not work, but held a job or owned business from which they were temporarily absent (because of illness, vacation, temporarily stoppage, or any other reason) during the reference week. Employed persons are classified according to employment status as follows:

1. Employer
2. Self-employed
3. Employee
4. Unpaid family member

Unemployed (According to the ILO Standards):

Unemployed persons are those individuals 15 years and over who did not work at all during the reference week, who were not absent from a job and were available for work and actively seeking a job during the reference week. Persons who work in Israel and were absent from work due to closure are considered unemployed, and also those persons never work and not looking for work but waiting to return back to their works in Israel and Settlements.

Unemployed (According to the Relaxed Definition):

The number of unemployed persons was calculated under the relaxed definition by adding to unemployed persons according to the ILO Standards, those persons outside labour force because they were frustrated

Labour force:

The economically active population (Labour Force) consists of all persons 15 years and over who are either employed or unemployed as defined above at the time of survey.

Underemployment:

Underemployment exists when a person's employment is inadequate in relation to alternative employment, account being taken of his/her occupational skills.

Persons outside labour force:

The population not economically active comprises all persons 15 years and over, who were neither employed nor unemployed accordingly to the definitions above.

()

15

:1

2010 -

Table 1: Percentage Distribution of Persons Aged 15 Years and Over in the Palestinian Territory by Labour Force Status and Region (Relaxed Definition), October- December, 2010

Region	Labour Force Status					
	Total		Outside Labour Force		In Labour Force	
	(%)	Number	(%)	العدد Number	(%)	Number
Palestinian Territory	100	2,409,800	54.6	1,316,000	45.4	1,093,800
West Bank	100	1,543,300	51.7	797,700	48.3	745,600
Gaza Strip	100	866,500	59.8	518,300	40.2	348,200

()

15

:2

2010 -

Table 2: Percentage Distribution of Labour Force Participants Aged 15 Years and Over in the Palestinian Territory by Labour Force Components and Region (Relaxed Definition), October- December, 2010

Region	Labour Force Components					
	Total		Unemployment		Employment	
	(%)	Number	(%)	العدد Number	(%)	Number
Palestinian Territory	100	1,093,800	29.9	326,600	70.1	767,200
West Bank	100	745,600	23.5	175,300	76.5	570,300
Gaza Strip	100	348,200	43.5	151,300	56.5	196,900

2010 -

Table 3: Percentage Distribution of Persons Aged 15 Years and Over in the Palestinian Territory by Labour Force Status, Region and Sex(ILO Standards), October- December, 2010

Region	Labour Force Status					
	Total		Outside Labour Force		In Labour Force	
	(%)	Number	(%)	العدد Number	(%)	Number
Palestinian Territory						
Males	100	1,218,700	32.8	400,100	67.2	818,600
Females	100	1,191,000	84.4	1,008,400	15.3	182,600
Total	100	2,490,700	58.5	1,408,500	41.5	1,001,200
West Bank						
Males	100	781,100	30.7	239,800	69.3	541,300
Females	100	762,200	80.9	617,000	19.1	145,200
Total	100	1,543,300	55.5	856,800	44.5	686,500
Gaza Strip						
Males	100	437,600	36.6	160,300	63.4	277,300
Females	100	428,800	91.3	391,400	8.7	37,400
Total	100	866,400	63.7	551,700	36.3	314,700

2010 -

Table 4: Percentage Distribution of Labour Force Participants Aged 15 Years and Over in the Palestinian Territory by Labour Force Components, Region and Sex (ILO Standards), October- December, 2010

Region and Sex	Labour Force Components							
	Total		Unemployment		العمالة Underemployment		Full Employment	
	(%)	Number	(%)	العدد Number	(%)	Number	(%)	Number
Palestinian Territory								
Males	100	818,600	23.4	191,700	7.8	64,100	68.8	562,800
Females	100	182,600	23.2	42,300	3.2	5,700	73.6	134,600
Total	100	1,001,200	23.4	234,000	7.0	69,800	69.6	697,400
West Bank								
Males	100	541,300	16.5	89,200	10.5	57,100	73.0	395,000
Females	100	145,200	18.6	27,000	3.8	5,400	77.6	112,800
Total	100	686,500	16.9	116,200	9.1	62,500	74.0	507,800
Gaza Strip								
Males	100	277,300	37.0	102,500	2.5	7,000	60.5	167,800
Females	100	37,400	40.9	15,300	0.8	300	58.3	21,800
Total	100	314,700	37.4	117,800	2.3	7,300	60.3	189,600

2010 -

Table 5: Labour Force Status for Graduates who hold Associate Diploma Certificate and Above by Specialization (ILO Standards), October- December, 2010

Specialization	Total %	المتعطلون Unemployed %	العاملون Employed %	Outside Labour Force %	Labour Force %
Education Science and Teacher Rehabilitation	100	33.1	66.9	28.6	71.4
Humanities	100	23.3	76.7	31.1	68.9
Social and Behavioral Science	100	21.1	78.9	13.2	86.8
Mass media and Information	100	21.0	79.0	11.1	88.9
Business and Administration	100	22.9	77.1	22.2	77.8
Law	100	24.7	75.3	19.7	80.3
Natural Sciences	100	21.8	78.2	20.1	79.9
Mathematics and Statistics	100	19.7	80.3	22.4	77.6
Computer	100	31.5	68.5	16.9	83.1
Engineering and Engineering Occupations	100	16.1	83.9	19.2	80.8
Architectural and Construction	100	20.7	79.3	20.7	79.3
Health	100	14.6	85.4	20.9	79.1
Personal Services	100	14.4	85.6	14.9	85.1
Other Specialization	100	21.2	78.8	17.7	82.3
Total	100	22.4	77.6	22.0	78.0

2010 -

Table 6: Labour Force Participation Rate of Persons Aged 15 Years and Over in the Palestinian Territory by Age Group and Sex (ILO Standards), October- December, 2010

Age Group	Total	Sex		
		Females	Males	
15-19	14.6	1.9	26.8	19-15
20-24	40.2	17.0	62.6	24-20
25-29	56.6	25.7	86.1	29-25
30-34	57.7	23.3	90.9	34-30
35-39	58.4	21.9	94.0	39-35
40-44	57.6	21.2	92.4	44-40
45-49	56.2	20.2	89.4	49-45
50+	30.2	8.6	53.9	+50
Total	41.5	15.3	67.2	

(ILO)

15

:7

2010 -

Table 7: Labour Force Participation Rate of Persons Aged 15 Years and Over in the Palestinian Territory by Age and Region (ILO Standards), October- December, 2010

Age Group	Region			
	Gaza Strip	West Bank	Palestinian Territory	
15-19	9.2	18.0	14.6	19-15
20-24	34.9	43.5	40.2	24-20
25-29	53.9	58.2	56.6	29-25
30-34	53.2	60.2	57.7	34-30
35-39	53.9	60.7	58.4	39-35
40-44	53.0	60.0	57.6	44-40
45-49	51.7	58.4	56.2	49-45
50+	24.4	33.2	30.2	+50
Total	36.3	44.5	41.5	

(ILO)

15

:8

2010 -

Table 8: Labour Force Participation Rate of Persons Aged 15 Years and Over in the Palestinian Territory by Years of Schooling and Sex (ILO Standards), October- December, 2010

Years of Schooling	Total	Sex		
		Females	Males	
0	11.1	6.2	26.9	0
1-6	43.5	11.0	72.9	6-1
7-9	41.4	7.7	69.9	9-7
10-12	36.1	5.7	65.9	12-10
13+	54.7	41.1	67.5	+13
Total	41.5	15.3	67.2	

(ILO)

15

:9

2010 -

Table 9: Labour Force Participation Rate of Persons Aged 15 Years and Over in the Palestinian Territory by Years of Schooling and Region (ILO Standards), October- December, 2010

Years of Schooling	Region			
	Gaza Strip	West Bank	Palestinian Territory	
0	7.3	13.0	11.1	0
1-6	43.4	43.6	43.5	6-1
7-9	33.4	45.5	41.4	9-7
10-12	28.8	40.7	36.1	12-10
13+	52.6	56.0	54.7	+13
Total	36.3	44.5	41.5	

2010 - (ILO)

Table 10: Labour Force Participation Rate and Unemployment Rate of Persons Aged 15 Years and Over in the Palestinian Territory by Region, Sex and Refugee Status (ILO Standards), October- December, 2010

Refugee Status and Region	Unemployment Rate			Labour Force Participation Rate		
	Total	Females	Males	Total	Females	Males
Palestinian Territory						
Refugee	29.4	29.4	29.4	38.9	13.6	64.2
Non-Refugee	20.0	20.0	20.1	43.2	16.4	68.9
Total	23.4	23.2	23.4	41.5	15.3	67.2
West Bank						
Refugee	19.5	19.6	19.5	42.0	17.6	66.0
Non-Refugee	16.1	18.3	15.5	45.3	19.5	70.4
Total	16.9	18.6	16.5	44.5	19.1	69.3
Gaza Strip						
Refugee	37.9	41.2	37.3	36.6	10.6	62.9
Non-Refugee	36.8	40.0	36.5	35.9	5.7	64.1
Total	37.4	40.9	37.0	36.3	8.7	63.4

2010 - (ILO)

Table 11: Labour Force Participation Rate and Unemployment Rate of Persons Aged 15 Years and Over in the Palestinian Territory by Region, Sex and Marital Status (ILO Standards), October- December, 2010

Marital Status and Region	Unemployment Rate			Labour Force Participation Rate		
	Total	Females	Males	Total	Females	Males
Palestinian Territory						
Never Married	36.6	35.9	36.8	33.1	15.6	46.2
Currently Married	17.6	16.9	17.7	49.3	16.1	83.9
Other	16.3	11.6	22.4	11.7	7.4	44.5
Total	23.4	23.2	23.4	41.5	15.3	67.2
West Bank						
Never Married	25.7	26.4	25.5	37.2	18.5	51.0
Currently Married	12.8	15.2	12.2	51.4	20.5	83.9
Other	12.8	11.6	14.9	14.7	10.0	45.6
Total	16.9	18.6	16.5	44.5	19.1	69.3
Gaza Strip						
Never Married	63.2	62.3	63.4	26.1	10.9	37.8
Currently Married	27.2	24.8	27.5	45.5	8.1	83.9
Other	33.0	13.2	49.2	5.9	2.9	41.1
Total	37.4	40.9	37.0	36.3	8.7	63.4

Table 12: Labour Force Participation Rate and Unemployment Rate for Persons Aged 15 Years and Over in the Palestinian Territory by Region, Type of locality and Sex (ILO Standards), October- December, 2010

Type of locality and Region	Unemployment Rate			Labour Force Participation Rate		
	Total	Females	Males	Total	Females	Males
Palestinian Territory						
Urban	23.9	24.2	23.9	41.1	14.6	67.0
Rural	18.7	16.6	19.2	45.5	20.1	69.8
Camps	29.3	32.7	28.6	37.4	12.7	63.5
Total	23.4	23.2	23.4	41.5	15.3	67.2
West Bank						
Urban	16.4	19.1	15.7	44.2	18.7	69.3
Rural	17.1	15.8	17.5	46.0	20.9	69.9
Camps	21.7	27.7	20.3	40.8	15.0	67.1
Total	16.9	18.6	16.5	44.5	19.1	69.3
Gaza Strip						
Urban	37.3	41.4	36.8	36.6	8.3	63.7
Rural	50.4	56.0	49.8	36.6	6.8	67.5
Camps	35.9	37.5	35.6	34.9	11.1	60.8
Total	37.4	40.9	37.0	36.3	8.7	63.4

Table 13: Percentage Distribution of Youth Aged (15-29) Years in the Palestinian Territory by Labour Force Status, Region and Sex (ILO Standards), October- December, 2010

Labour Force Status	Gaza Strip			West Bank			Palestinian Territory		
	T	F	M	T	F	M	T	F	M
In Labour Force	29.3	9.2	48.6	37.1	15.5	57.6	34.1	13.1	54.2
Outside Labour Force	70.7	90.8	51.4	62.9	84.5	42.4	65.9	86.9	45.8
Total	100	100	100	100	100	100	100	100	100
Full Employment	44.5	38.7	45.6	64.8	62.1	65.5	58.2	55.8	58.7
Underemployment	2.7	0.5	3.1	9.4	4.8	10.6	7.2	3.7	8.0
Unemployment	52.8	60.8	51.3	25.8	33.1	23.9	34.6	40.5	33.3
Total	100	100	100	100	100	100	100	100	100

15

:14

2010 - (ILO)

Table 14: Unemployment Rate of Participants in the Labour Force Aged 15 Years and Over in the Palestinian Territory by Age Group and Sex (ILO Standards), October- December, 2010

Age Group	Total	Sex		
		Females	Males	
15-19	42.5	20.3	43.9	19-15
20-24	38.8	50.6	35.7	24-20
25-29	27.7	34.2	25.8	29-25
30-34	16.4	17.8	16.1	34-30
35-39	14.4	14.8	14.3	39-35
40-44	13.7	6.2	15.3	44-40
45-49	17.7	3.1	20.8	49-45
50+	15.7	2.4	18.1	+50
Total	23.4	23.2	23.4	

15

:15

2010 - (ILO)

Table 15: Unemployment Rate of Participants in the Labour Force Aged 15 Years and Over in the Palestinian Territory by Age and Region (ILO Standards), October- December, 2010

Age Group	Region			
	Gaza Strip	West Bank	Palestinian Territory	
15-19	70.6	33.5	42.5	19-15
20-24	61.8	27.4	38.8	24-20
25-29	40.4	20.6	27.7	29-25
30-34	22.0	13.7	16.4	34-30
35-39	22.4	10.8	14.4	39-35
40-44	20.5	10.6	13.7	44-40
45-49	32.7	11.1	17.7	49-45
50+	37.4	7.9	15.7	+50
Total	37.4	16.9	23.4	

15

:16

2010 - (ILO)

Table 16: Unemployment Rate of Participants in the Labour Force Aged 15 Years and Over in the Palestinian Territory by Years of Schooling and Sex (ILO Standards), October- December, 2010

Years of Schooling	Total	Sex		
		Females	Males	
0	15.6	2.6	25.2	0
1-6	25.7	6.8	28.3	6-1
7-9	24.4	5.6	26.2	9-7
10-12	24.2	10.8	25.4	12-10
13+	21.3	31.4	15.5	+13
Total	23.4	23.2	23.4	

2010 - (ILO)

Table 17: Unemployment Rate of Participants in the Labour Force Aged 15 Years and Over in the Palestinian Territory by Years of Schooling and Region (ILO Standards), October- December, 2010

Years of Schooling	Region			
	Gaza Strip	West Bank	Palestinian Territory	
0	44.0	7.5	15.6	0
1-6	48.0	15.9	25.7	6-1
7-9	40.8	18.3	24.4	9-7
10-12	39.6	17.4	24.2	12-10
13+	30.3	16.3	21.3	+13
Total	37.4	16.9	23.4	المجموع

:18

2010 - (ILO)

Table 18: Labour Force Participation, Employment and Unemployment and Average Daily Wage in NIS for Wage Employees in the Palestinian Territory by Governorate (ILO Standards), October- December, 2010

Governorate and Region	Average Daily Wage in NIS for Wage Employees	Unemployment		العمالة Employment		Labour Force Participation		
		عدد Number	نسبة %	عدد Number	نسبة %	عدد Number	نسبة %	
Jenin	89.5	8,500	11.5	65,300	88.5	73,800	43.4	
Tubas	83.9	1,700	10.3	14,100	89.7	15,800	47.1	
Tulkarm	85.6	8,200	18.7	35,900	81.3	44,100	41.3	
Nablus	81.9	15,700	15.7	83,700	84.3	99,400	46.7	
Qalqilia	98.7	5,400	20.5	20,900	79.5	26,300	42.2	
Salfeet	114.9	2,300	11.9	17,000	88.1	19,300	50.9	
Ramallah & Al-Bireh	108.0	13,600	15.7	73,100	84.3	86,700	43.5	
Jericho & AL- Aghwar	74.7	1,700	12.0	12,500	88.0	14,200	50.6	
Jerusalem	144.8	10,700	11.9	79,100	88.1	89,800	38.3	
Bethlehem	97.5	12,300	22.4	42,700	77.6	55,000	47.4	
Hebron	92.4	36,100	22.3	126,000	77.7	162,100	47.4	
West Bank	102.5	116,200	16.9	570,300	83.1	686,500	44.5	
GS-North	57.1	19,800	33.9	38,400	66.1	58,200	34.9	
Gaza City	57.2	34,600	31.4	75,700	68.6	110,300	36.1	
Deir ALBalah	65.7	16,300	35.5	29,700	64.5	46,000	38.7	
Khan Younis	55.0	32,400	50.6	31,700	49.4	64,100	37.2	
Rafah	71.4	14,700	40.7	21,400	59.3	36,100	35.2	
Gaza Strip	59.5	117,800	37.4	196,900	62.6	314,700	36.3	
Palestinian Territory	92.2	234,000	23.4	767,200	76.6	1,001,200	41.5	

2010 -

Table 19: The Average of Unemployment Duration in Months in the Palestinian Territory by Region and Sex (ILO Standards), October- December, 2010

Region	Total	Sex	
		Females	Males
Palestinian Territory	16.0	15.4	16.2
West Bank	7.8	14.5	5.8
Gaza Strip	24.1	17.0	25.2

Note: Unemployed period means the period of being Unemployed since the individual was a available for work or leaving last work

2010 -

Table 20: Percentage Distribution of Employed Persons Aged 15 Years and Over in the Palestinian Territory by Governorate and Place of work (ILO Standards), October- December, 2010

Governorate and Region	Percentage of Employment	Place of work			
		Total	Israel and Settlements	Other Governorate	Same Governorate
Jenin	88.5	100	7.5	10.0	82.5
Tubas	89.7	100	6.3	18.1	75.6
Tulkarm	81.3	100	8.0	9.3	82.7
Nablus	84.3	100	6.5	10.9	82.6
Qalqilia	79.5	100	15.6	10.2	74.2
Salfeet	88.1	100	18.6	13.3	68.1
Ramallah & Al-Bireh	84.3	100	4.8	0.9	94.3
Jericho & AL- Aghwar	88.0	100	12.2	4.9	82.9
Jerusalem	88.1	100	42.5	8.3	49.2
Bethlehem	77.6	100	10.0	6.9	83.1
Hebron	77.7	100	12.3	4.5	83.2
West Bank	83.1	100	13.8	7.4	78.8
GS-North	66.1	100	0.0	30.8	69.2
Gaza City	68.6	100	0.0	5.5	94.5
Deir ALBalah	64.5	100	0.0	38.6	61.4
Khan Younis	49.4	100	0.0	20.1	79.9
Rafah	59.3	100	0.0	17.7	82.3
Gaza Strip	62.6	100	0.0	19.1	80.9
Palestinian Territory	76.6	100	10.3	10.4	79.3

2010 -

Table 21: Percentage Distribution of Employed Persons Aged 15 Years and Over in the Palestinian Territory by Economic Activity and Place of work (ILO Standards), October- December, 2010

Economic Activity	Total	Place of work		
		Israel and Settlements	Gaza Strip	West Bank
Agriculture, fishing and forestry	12.5	8.6	5.1	16.1
Mining, quarrying and manufacturing	10.7	12.4	4.3	13.0
Construction	12.7	50.2	4.0	10.2
Commerce, restaurants and hotels	19.5	14.6	18.0	20.9
Transportation, storage and communication	5.9	6.5	7.3	5.2
Services and other branches	38.7	7.7	61.3	34.6
Total	100	100	100	100

2010 -

Table 22: Number of Employed Persons Aged 15 Years and Over in the Palestinian Territory by Place of work and Region (ILO Standards), October- December, 2010

Place of work	Region		
	Gaza Strip	West Bank	Palestinian Territory
West Bank	0	490,400	490,400
Gaza Strip	196,900	0	196,900
Israel	0	69,600	69,600
Settlements	0	9,200	9,200
Abroad*	0	1,100	1,100
Total	196,900	570,300	767,200

(*): Represent only head of households who are working abroad and they back annually to their households in the Palestinian Territory, and do not include household member who are living and working abroad.

:(*)

2010 -

Table 23: Percentage Distribution of Employed Persons Aged 15 Years and Over in the Palestinian Territory by Economic Activity, Sex and Region (ILO Standards), October- December, 2010

Economic Activity and Sex	Region			
	Gaza Strip	West Bank	Palestinian Territory	
Both Sexes				
Agriculture, fishing and forestry	5.1	15.1	12.5	
Mining, quarrying and manufacturing	4.3	12.9	10.7	
Construction	4.0	15.8	12.7	
Commerce, restaurants and hotels	18.0	20.0	19.5	
Transportation, storage and communication	7.3	5.4	5.9	
Services and other branches	61.3	30.8	38.7	
Total	100	100	100	
Males				ذكور
Agriculture, fishing and forestry	5.7	11.5	9.9	
Mining, quarrying and manufacturing	4.8	14.2	11.6	
Construction	4.6	19.8	15.5	
Commerce, restaurants and hotels	20.0	23.1	22.2	
Transportation, storage and communication	8.3	6.6	7.1	
Services and other branches	56.6	24.8	33.7	
Total	100	100	100	
Females				
Agriculture, fishing and forestry	0.2	29.0	24.4	
Mining, quarrying and manufacturing	0.3	8.0	6.8	
Construction	-	0.3	0.2	
Commerce, restaurants and hotels	1.7	8.4	7.4	
Transportation, storage and communication	-	0.6	0.5	
Services and other branches	97.8	53.7	60.7	
Total	100	100	100	

(-): means there are no enough observations in this section

:(-)

2010

-

(ILO)

15

:24

Table 24: Percentage Distribution of Employed Persons Aged 15 Years and Over in the Palestinian Territory by Governorate, Region and Economic Activity (ILO Standards), October- December, 2010

Governorate And Region	Economic Activity									
	Total	Services and other branches	Health	Education	Transportation, storage and communication	Commerce, restaurants and hotels	Construction	Mining, quarrying and manufacturing	Agriculture, fishing and forestry	
Jenin	100	16.3	1.8	7.9	4.2	20.7	5.1	7.4	36.6	
Tubas	100	17.8	2.5	11.1	7.4	11.5	8.3	2.0	39.4	
Tulkarm	100	21.1	4.4	9.7	3.6	15.8	16.9	9.8	18.7	
Nablus	100	20.3	4.1	8.5	5.6	23.8	11.6	15.1	11.0	
Qalqilia	100	20.2	3.9	10.4	4.7	15.0	11.4	11.0	23.4	
Salfeet	100	24.6	2.0	10.3	3.8	16.2	5.4	12.8	24.9	
Ramallah & Al-Bireh	100	27.1	4.1	14.0	6.7	19.4	13.3	11.6	3.8	
Jericho & AL- Aghwar	100	25.3	3.4	6.2	4.3	17.9	3.3	3.6	36.0	
Jerusalem	100	16.1	6.5	19.2	8.6	24.8	11.1	12.1	1.6	
Bethlehem	100	20.5	5.5	16.2	4.3	18.1	10.9	17.8	6.7	
Hebron	100	12.5	3.4	12.2	3.9	23.6	8.8	17.7	17.9	
West Bank	100	18.8	3.9	11.9	5.2	20.9	10.2	13.0	16.1	
GS-North	100	38.9	7.7	14.3	8.8	14.3	4.3	4.4	7.3	
Gaza City	100	32.1	7.1	13.5	8.3	26.8	4.9	6.3	1.0	
Deir ALBalah	100	49.0	7.8	16.4	6.6	8.5	3.1	2.8	5.8	
Khan Younis	100	43.2	7.0	11.9	4.9	16.0	4.5	2.3	10.2	
Rafah	100	47.3	10.7	16.8	6.1	9.6	1.2	2.2	6.1	
Gaza Strip	100	39.4	7.7	14.2	7.3	18.0	4.0	4.3	5.1	
Palestinian Territory	100	24.7	5.0	12.5	5.8	20.0	8.4	10.5	13.1	

Note: Workers in Israel and Settlements are excluded

:

2010 -

Table 25: Percentage Distribution of Employed Persons Aged 15 Years and Over in the Palestinian Territory by Economic Activity, Employment Status and Region (ILO Standards), October- December, 2010

Economic Activity and Region	Employment Status				
	Total	Unpaid Family Member	Wage Employee	Self Employed	Employer
Palestinian Territory					
Agriculture, fishing and forestry	12.5	67.2	4.0	23.2	6.7
Mining, quarrying and manufacturing	10.7	3.5	10.4	11.7	20.9
Construction	12.7	2.4	15.0	6.2	19.4
Commerce, restaurants and hotels	19.5	25.2	12.7	37.3	37.6
Transportation, storage and communication	5.9	0.9	5.0	12.9	2.1
Services and other branches	38.7	0.8	52.9	8.7	13.3
Total	100	100	100	100	100
West Bank					
Agriculture, fishing and forestry	15.1	72.3	4.0	27.2	3.7
Mining, quarrying and manufacturing	12.9	3.3	13.4	12.8	22.4
Construction	15.8	1.7	20.3	6.3	19.7
Commerce, restaurants and hotels	20.0	21.0	14.0	33.0	37.9
Transportation, storage and communication	5.4	0.8	4.5	11.7	1.5
Services and other branches	30.8	0.9	43.8	9.0	14.8
Total	100	100	100	100	100
Gaza Strip					
Agriculture, fishing and forestry	5.1	13.1	4.1	4.9	25.5
Mining, quarrying and manufacturing	4.3	5.4	3.7	6.5	10.7
Construction	4.0	9.9	3.0	6.0	17.6
Commerce, restaurants and hotels	18.0	70.1	9.8	56.5	35.7
Transportation, storage and communication	7.3	1.5	5.9	18.4	5.7
Services and other branches	61.3	-	73.5	7.7	4.8
Total	100	100	100	100	100

(-): means there are no enough observations in this section

:(-)

2010 - (ILO)

Table 26: Percentage Distribution of Employed Persons From the Palestinian Territory by Economic Activity and Weekly Work Hours (ILO Standards), October- December, 2010

Economic Activity	Total	Weekly Work Hours		
		+35	34-15	14-1
Agriculture, Hunting & Fishing	10.8	8.8	19.3	27.2
Mining, Quarrying & Manufacturing	12.3	12.6	10.8	10.7
Construction	16.7	15.5	24.3	14.4
Commerce, Hotels & Restaurants	24.3	26.8	12.0	12.0
Transportation, Storage & Communication	7.7	8.4	3.6	6.7
Services & Other Branches	28.2	28.0	30.0	29.0
Total	100	100	100	100

Note: Employed persons excluding absent persons :

(ILO)

15

:27

2010 -

Table 27: Percentage Distribution of Employed Persons Aged 15 Years and Over in the Palestinian Territory by Occupation and Region (ILO Standards), October- December, 2010

Occupation	Region		
	Gaza Strip	West Bank	Palestinian Territory
Legislators, Senior Officials & Managers	2.1	5.2	4.4
Professionals, Technicians, Associates and Clerks	36.3	22.2	25.8
Service, Shop & Market Workers	28.1	17.3	20.1
Skilled Agricultural & Fishery Workers	2.2	12.8	10.1
Craft and Related Trade Workers	8.4	17.5	15.1
Plant & Machine Operators & Assemblers	7.4	7.1	7.2
Elementary Occupations	15.5	17.9	17.3
Total	100	100	100

2010 -

Table 28: Percentage Distribution of Employed Persons Aged 15 Years and Over in the Palestinian Territory by Occupation, Educational Qualification and Region (ILO Standards), October- December, 2010

Occupation and Region	Educational Qualification				
	Total	Bachelor and above	Associate diploma	Secondary certificate	Preparatory & less
Palestinian Territory					
Legislators, Senior Officials & Managers	100	44.6	7.7	15.6	32.1
Professionals, Technicians, Associates and Clerks	100	65.9	16.3	10.8	7.0
Service, Shop & Market Workers	100	7.9	5.8	25.7	60.6
Skilled Agricultural & Fishery Workers	100	3.0	2.5	13.3	81.2
Craft and Related Trade Workers	100	2.2	4.0	15.5	78.3
Plant & Machine Operators & Assemblers	100	2.0	5.1	19.3	73.6
Elementary Occupations	100	3.2	2.7	13.2	80.9
Total	100	21.9	7.4	16.0	54.7
West Bank					
Legislators, Senior Officials & Managers	100	40.0	7.9	16.8	35.3
Professionals, Technicians, Associates and Clerks	100	65.2	17.9	9.9	7.0
Service, Shop & Market Workers	100	7.7	4.8	23.1	64.4
Skilled Agricultural & Fishery Workers	100	3.0	2.3	13.1	81.6
Craft and Related Trade Workers	100	2.2	3.4	15.3	79.1
Plant & Machine Operators & Assemblers	100	2.5	5.9	16.5	75.1
Elementary Occupations	100	3.5	2.6	12.8	81.1
Total	100	19.5	7.0	14.9	58.6
Gaza Strip					
Legislators, Senior Officials & Managers	100	76.4	6.2	7.3	10.1
Professionals, Technicians, Associates and Clerks	100	67.4	13.4	12.4	6.8
Service, Shop & Market Workers	100	8.2	7.6	30.3	53.9
Skilled Agricultural & Fishery Workers	100	1.8	6.2	17.2	74.8
Craft and Related Trade Workers	100	1.9	7.3	16.7	74.1
Plant & Machine Operators & Assemblers	100	0.7	3.0	27.0	69.3
Elementary Occupations	100	1.7	3.1	14.7	80.5
Total	100	28.9	8.6	19.2	43.3

2010 -

Table 29: Percentage Distribution of Employed Persons Aged 15 Years and Over in the Palestinian Territory by Employment Status, Sex and Region (ILO Standards), October- December, 2010

Employment Status and Sex	Region			
	Gaza Strip	West Bank	Palestinian Territory	
Both Sexes				
Employer	3.2	7.0	6.0	
Self Employed	12.4	19.3	17.6	
Wage Employee	81.8	64.0	68.6	
Unpaid Family Member	2.6	9.7	7.8	
Total	100	100	100	
Males				ذكور
Employer	3.6	8.5	7.1	
Self Employed	13.6	21.1	19.0	
Wage Employee	79.9	65.1	69.2	
Unpaid Family Member	2.9	5.3	4.7	
Total	100	100	100	
Females				
Employer	-	1.3	1.1	
Self Employed	2.9	12.7	11.2	
Wage Employee	97.1	59.7	65.5	
Unpaid Family Member	-	26.3	22.2	
Total	100	100	100	

2010 -

Table 30: Percentage Distribution of Employed Persons Aged 15 Years and Over in the Palestinian Territory by Place of Work and Region (ILO Standards), October- December, 2010

Place of Work	Region						
	Gaza Strip		West Bank		Palestinian Territory		
	(%)	Number	(%)	Number	(%)	Number	
Palestinian Territory	100.0	196,900	86.0	490,400	89.6	687,300	
Israel and Settlements (Persons who have Permit)	0	0	5.3	30,000	3.9	30,000)
Israel and Settlements (Persons who not have Permit)	0	0	2.9	16,800	2.2	16,800)
Israel and Settlements (Persons who have Israeli Identity or foreign passport)	0	0	5.6	32,000	4.2	32,000)
Abroad*	0	0	0.2	1,100	0.1	1,100	/
Total	100	196,900	100	570,300	100	767,200	(

(*): Represent only head of households who are working abroad and they back annually to their households in the Palestinian Territory, and do not include household member who are living and working abroad.

:(*)

2010 -

Table 31: Percentage Distribution of Employed Persons Aged 15 Years and Over in the Palestinian Territory by Governorate, Region and Employment Status (ILO Standards), October- December, 2010

Governorate and Region	Total	Employment Status				
		Unpaid Family Member	Wage Employee	Self Employed	Employer	
Jenin	100	19.2	46.3	30.0	4.5	
Tubas	100	20.5	56.2	19.9	3.4	
Tulkarm	100	8.5	66.8	18.2	6.5	
Nablus	100	7.3	66.0	19.5	7.2	
Qalqilia	100	7.6	65.0	24.0	3.4	
Salfeet	100	14.1	63.1	17.5	5.3	
Ramallah & Al-Bireh	100	4.7	70.7	15.6	9.0	
Jericho & AL- Aghwar	100	18.5	59.9	19.0	2.6	
Jerusalem	100	1.2	81.5	10.6	6.7	
Bethlehem	100	3.5	69.3	22.6	4.6	
Hebron	100	14.6	55.6	19.9	9.9	
West Bank	100	9.7	64.0	19.3	7.0	
GS-North	100	2.0	82.4	13.0	2.6	
Gaza City	100	4.0	78.1	14.6	3.3	
Deir ALBalah	100	1.9	84.8	9.0	4.3	
Khan Younis	100	1.0	82.9	13.2	2.9	
Rafah	100	2.2	88.1	7.1	2.6	
Gaza Strip	100	2.6	81.8	12.4	3.2	
Palestinian Territory	100	7.8	68.6	17.6	6.0	

2010 -

Table 32: Percentage Distribution of Employed Persons Aged 15 Years and Over in the Palestinian Territory by Governorate, Region and Sector (ILO Standards), October- December, 2010

Governorate and Region	المجموع Total	Sector				المحافظة والمنطقة
		اسرائيل والمستوطنات Israel and Settlements	قطاعات أخرى Other Sectors	قطاع خاص Private Sector	قطاع عام Public Sector	
Jenin	100	7.5	1.1	73.4	18.0	جنين
Tubas	100	6.3	3.9	69.7	20.1	طوباس
Tulkarm	100	8.0	1.9	69.8	20.3	طولكرم
Nablus	100	6.5	1.8	71.0	20.7	نابلس
Qalqilia	100	15.6	2.2	62.0	20.2	قلقيلية
Salfeet	100	18.6	0.5	58.5	22.4	سلفيت
Ramallah & Al-Bireh	100	4.8	5.0	72.0	18.2	رام الله والبييرة
Jericho & AL- Aghwar	100	12.2	3.7	61.9	22.2	أريحا والأغوار
Jerusalem	100	42.5	3.3	49.0	5.2	القدس
Bethlehem	100	10.0	3.2	69.6	17.2	بيت لحم
Hebron	100	12.3	1.8	70.7	15.2	الخليل
West Bank	100	13.8	2.5	67.2	16.5	الضفة الغربية
GS-North	100	0.0	9.2	45.8	45.0	شمال غزة
Gaza City	100	0.0	7.7	53.6	38.7	غزة
Deir ALBalah	100	0.0	6.4	30.9	62.7	دير البلح
Khan Younis	100	0.0	4.8	42.3	52.9	خانيونس
Rafah	100	0.0	10.9	29.9	59.2	رفح
Gaza Strip	100	0.0	7.7	44.3	48.0	قطاع غزة
Palestinian Territory	100	10.3	3.8	61.3	24.6	الأراضي الفلسطينية

2010 - (ILO)

Table 33: Average Weekly Work Hours, Monthly Work Days and Daily Wage in NIS for Wage Employees Aged 15 Years and Over by Place of Work (ILO Standards), October- December, 2010

Indicator	Total	Place of work			
		Israel and Settlements	Gaza Strip	West Bank	
Average weekly work hours	41.2	39.0	37.8	43.2	
Average monthly work days*	22.2	20.4	23.7	22.1	*
Median daily net wage in NIS	76.9	150.0	50.0	76.9	
Average daily net wage in NIS	92.2	160.5	59.5	86.8	

*: Including paid days that have been not worked

:*

(ILO)

:34

2010 -

Table 34: Average Daily Wage in NIS for Wage Employees in the Palestinian Territory by Region and Sector (ILO Standards), October- December, 2010

Region	Total	Sector				
		Israel and Settlements	Other Sector	Private Sector	* Public Sector*	
Palestinian Territory	92.2	160.5	104.7	71.5	86.4	
West Bank	102.5	160.5	133.2	81.3	91.3	
Gaza Strip	59.5	0	83.1	39.9	75.8	

*:Palestinian National Authority institutions

:*

(ILO)

:35

2010 -

Table 35: Average Daily Wage in NIS for Wage Employees in the Palestinian Territory by Region and Sex (ILO Standards), October- December, 2010

Region	Total	Sex		
		Females	Males	
Palestinian Territory	78.9	79.7	78.7	
West Bank	86.8	83.0	87.9	
Gaza Strip	59.5	67.2	58.0	

Note: Workers in Israel and Settlements are excluded

:

2010 -

Table 36: Average Daily Wage in NIS for Wage Employees in the Palestinian Territory by Economic Activity and Place of work (ILO Standards), October- December, 2010

Economic Activity	Total	Place of work		
		Israel and Settlements	Gaza Strip	West Bank
Agriculture, fishing and forestry	66.6	119.7	26.2	60.2
Mining, quarrying and manufacturing	80.2	149.9	35.4	68.5
Construction	118.3	166.5	39.0	81.2
Commerce, restaurants and hotels	73.6	156.9	28.1	68.6
Transportation, Storage & Communication	97.2	204.4	41.7	93.4
Services and other branches	93.3	151.0	76.7	98.4
Total	92.2	160.5	59.5	86.8

2010 -

Table 37: Average Monthly Wage in NIS for Wage Employees in the Palestinian Territory by Occupation, and Educational Qualification (ILO Standards), October- December, 2010

Occupation	Educational Qualification				
	Total	Bachelor and above	Associate diploma	Secondary certificate	Preparatory & less
Legislators, Senior Officials & Managers	3,754	3,975	-	-	-
Professionals, Technicians, Associates and Clerks	2,546	2,697	2,338	2,071	2,142
Service, Shop & Market Workers	1,892	2,160	-	1,805	1,863
Skilled Agricultural & Fishery Workers	1,794	-	-	-	-
Craft and Related Trade Workers	2,727	-	-	2,925	2,703
Plant & Machine Operators & Assemblers	2,370	-	-	2,204	2,395
Elementary Occupations	2,147	-	2,653	2,353	2,098
Total	2,396	2,762	2,393	2,230	2,239

(-): means there are no enough observations in this section

:(-)

2010 -

Table 38: Average Monthly Wage in NIS for Wage Employees in the Palestinian Territory by Length of Services in Years, Educational Qualification and Region (ILO Standards), October- December, 2010

Length of Services in years and Region	Educational Qualification				
	Total	Bachelor and above	Associate diploma	Secondary certificate	Preparatory & less
Palestinian Territory					
0-1	1,711	1,915	1,467	1,611	1,641
2-3	2,175	2,352	2,265	2,037	2,130
4-6	2,416	2,713	2,503	2,330	2,279
7-9	2,626	3,009	2,434	2,467	2,391
10+	2,933	3,539	2,700	2,769	2,690
Total	2,396	2,762	2,393	2,230	2,239
West Bank					
0-1	1,995	2,091	-	1,986	1,959
2-3	2,456	2,537	2,639	2,380	2,426
4-6	2,715	2,989	2,676	2,869	2,582
7-9	2,825	3,096	2,514	2,704	2,734
10+	3,116	3,640	2,795	3,106	2,931
Total	2,664	2,949	2,612	2,608	2,547
Gaza Strip					
0-1	1,095	1,546	-	836	893
2-3	1,293	1,949	-	-	901
4-6	1,533	2,204	-	-	968
7-9	1,956	-	-	-	-
10+	2,147	3,231	2,316	1,542	1,291
Total	1,546	2,317	1,695	1,209	1,010

(-): means there are no enough observations in this section

:(-)

2010 - (ILO)

Table 39: Percentage Distribution of Persons Aged 15 Years and Over Outside the Labour Force in the Palestinian Territory by Reason, Sex and Region (ILO Standards), October- December, 2010

Reason and Sex	Region			
	Gaza Strip	West Bank	Palestinian Territory	
Both Sexes				
Old/illness	7.3	11.0	9.6	/
Housekeeping	49.1	46.7	47.6	
Studying or training	37.5	35.4	36.2	/
Others	6.1	6.9	6.6	
Total	100	100	100	
Males				
Old/illness	20.6	24.9	23.2	/
Housekeeping	0.2	0.6	0.4	
Studying or training	61.9	55.3	57.9	/
Others	17.3	19.2	18.5	
Total	100	100	100	
Females				
Old/illness	1.9	5.7	4.2	/
Housekeeping	69.1	64.6	66.3	
Studying or training	27.6	27.6	27.6	/
Others	1.4	2.1	1.9	
Total	100	100	100	

(-): means there are no enough observations in this section

:(-)

2010 -

Table 40: Percentage Distribution for Wage Employees in Private Sector in the Palestinian Territory by Some Indicators and Work Advantages and Region, October- December, 2010

Indicator	Region			
	Gaza Strip	West Bank	Palestinian Territory	
Distribution of Wage Employees by Nature of Work:				:
Permanently / full time	74.0	84.4	81.7	
Temporarily / Part time	0.8	7.1	5.5	
seasonal / casual	25.2	8.5	12.8	/ /
Total	100	100	100	
Distribution of Wage Employees by Contract Availability:				:
With Contract	33.2	29.8	30.6	
Collective Agreement	-	32.3	24.1	/
Without Contract	66.8	37.9	45.3	
Total	100	100	100	
Wage Employees by Presented Benefits:				:
Contributions to the pension fund	21.8	26.7	25.4	/
Annual paid Vacations	22.3	28.6	27.0	
Sick Paid Vacations	22.3	29.2	27.4	
Maternity Paid Vacations	59.6	56.8	57.4	

2010 -

Table 41: Percentage Distribution of Employed Persons Aged 15 Years and Over in the Palestinian Territory by Affiliation to Workers Vocational Union, Sex and Region, October- December, 2010

Affiliation to Workers Vocational Union & Sex	Region			
	Gaza Strip	West Bank	Palestinian Territory	
Both Sexes				
Affiliated to Workers Vocational Union	17.6	16.4	16.7	/
Not Affiliated to Workers Vocational Union	82.4	83.6	83.3	/
Total	100	100	100	
Males				
Affiliated to Workers Vocational Union	19.1	16.1	17.0	/
Not Affiliated to Workers Vocational Union	80.9	83.9	83.0	/
Total	100	100	100	
Females				
Affiliated to Workers Vocational Union	6.0	17.6	15.8	/
Not Affiliated to Workers Vocational Union	94.0	82.4	84.2	/
Total	100	100	100	

(ILO)

17-10

:42

2010 -

Table 42: Percentage Distribution of Children Aged 10-17 Years in the Palestinian Territory by Labour Force Status and Region (ILO Definition), October- December, 2010

Labour Force Status	Region			
	Gaza Strip	West Bank	Palestinian Territory	
Employed	0.4	5.1	3.3	
Unemployed	1.7	1.4	1.5	
Outside Labour Force	97.9	93.5	95.2	
Total	100	100	100	

(ILO)

:43

2010 -

Table 43: Percentage of Households which are headed by Women in the Palestinian Territory by Region (ILO Definition), October- December, 2010

Region	Percentage of Households which are headed by Women	
Palestinian Territory	9.6	
West Bank	10.3	
Gaza Strip	7.9	

(ILO) 2010-2000

Basic Changes in the Labour Force Indicators in Palestinian Territory During 2000 - 2010 (ILO Standards)

Indicator	59	58	57	56	55	54	53	52	51	50	49	48	47	46	45	44	43	42	41	40	39	38	37	36	35	34	33	29	19	18	
	Q4-2010	Q3-2010	Q2-2010	Q1-2010	Q4-2009	Q3-2009	Q2-2009	Q1-2009	Q4-2008	Q3-2008	Q2-2008	Q1-2008	Q4-2007	Q3-2007	Q2-2007	Q1-2007	Q4-2006	Q3-2006	Q2-2006	Q1-2006	Q4-2005	Q3-2005	Q2-2005	Q1-2005	Q4-2004	Q3-2004	Q2-2004	Q1-2004	Q4-2003	Q3-2003	Q2-2003
Labour Force Participation Rate	41.5	40.5	41.5	40.7	41.5	41.6	41.7	41.4	41.4	41.6	41.6	40.6	41.4	42.7	42.4	41.2	43.0	41.3	40.9	40.0	40.3	41.7	41.2	39.7	41.0	40.3	40.3	40.7	39.2	43.5	
Full Employment Rate	69.6	67.0	68.7	71.2	68.6	69.1	71.6	68.7	65.7	66.7	66.0	71.3	72.1	68.2	70.1	71.5	69.8	67.9	68.7	67.5	69.1	70.2	72.7	67.9	69.0	67.2	63.9	68.7	66.9	83.6	
Underemployment Rate	7.0	6.4	8.4	6.8	6.6	5.1	6.2	5.9	6.4	5.8	8.2	6.1	5.7	8.6	10.7	6.9	8.2	7.9	8.4	7.2	7.1	7.1	6.1	5.8	5.4	6.1	7.5	7.0	4.8	6.4	
Unemployment Rate	23.4	26.6	22.9	22.0	24.8	25.8	22.2	25.4	27.9	27.5	25.8	22.6	22.2	23.2	19.2	21.6	22.0	24.2	22.9	25.3	23.8	22.7	21.2	26.3	25.6	26.7	28.6	24.3	28.3	10.0	
Employed in Agriculture	12.5	10.2	12.7	11.8	12.4	10.7	12.3	11.7	13.0	12.7	14.9	12.9	15.3	15.1	17.3	14.7	21.5	13.7	15.2	13.2	14.4	14.9	15.6	13.3	19.3	14.4	15.2	17.7	16.9	12.7	
Employed in Construction	12.7	13.8	13.4	12.7	11.4	12.2	12.3	11.1	10.8	12.7	10.8	9.4	10.4	11.6	11.1	10.7	9.5	11.4	11.5	12.2	12.3	13.0	13.0	13.4	11.6	12.3	10.5	12.1	10.8	21.7	
Employed in Manufacturing	10.7	11.4	10.9	12.6	12.6	11.8	11.4	12.6	11.1	12.4	12.1	13.0	12.3	12.8	12.6	12.5	12.2	13.5	12.3	11.6	13.2	13.0	13.2	12.5	11.5	12.7	13.1	12.2	12.8	15.0	
Employed in Services	38.7	38.9	38.4	37.7	37.9	39.4	40.4	40.5	39.4	37.2	38.2	38.5	36.4	35.3	34.8	36.7	34.4	35.1	36.1	36.4	34.9	33.7	33.4	35.8	34.2	34.8	35.9	32.5	35.2	28.6	
Elementary Occupation Workers	17.3	18.8	18.0	18.3	16.5	15.6	14.6	15.8	17.9	15.6	15.7	14.9	14.3	14.8	13.1	13.8	13.2	15.1	16.0	16.0	16.6	14.6	15.2	15.6	14.0	15.3	13.8	14.1	13.7	19.8	
Craft and Related Trade Workers	15.1	16.0	15.7	16.8	15.5	15.1	16.1	15.7	13.6	16.9	15.5	16.3	14.7	17.8	17.2	16.5	15.1	17.2	15.8	16.5	16.8	18.6	17.4	17.3	8.9	17.5	17.1	18.0	16.2	24.5	
Employed in Israel & Settlements	10.3	10.5	10.1	11.1	10.0	10.7	10.2	10.0	12.1	12.1	10.8	11.2	10.0	9.3	8.5	9.8	9.5	10.5	8.7	9.8	9.6	9.9	10.2	10.2	8.1	9.3	8.1	8.9	9.1	22.1	
Employers	6.0	6.4	6.6	6.4	6.6	6.5	6.2	5.8	4.6	4.5	4.0	3.8	4.3	4.2	4.0	3.6	5.2	4.7	4.3	4.2	4.1	4.6	4.6	4.0	3.9	4.2	4.4	3.0	4.6	4.4	
Self - Employed	17.6	18.6	18.8	20.2	20.5	19.0	18.0	19.1	15.3	21.0	22.4	24.3	23.3	23.5	25.0	24.9	22.2	25.0	26.6	26.6	26.0	25.4	26.3	26.8	26.2	25.9	26.9	28.7	23.1	18.1	
Wage Employees	68.6	68.6	66.8	66.5	65.1	66.9	66.9	67.2	70.7	65.1	63.0	62.5	60.5	59.6	58.1	61.0	57.2	59.6	59.6	61.1	60.6	58.3	58.1	61.0	57.3	58.9	57.7	55.5	59.3	67.6	
Unpaid Family Members	7.8	6.4	7.8	6.9	7.7	7.6	8.9	7.9	9.4	9.4	10.6	9.4	11.9	12.7	12.9	10.5	10.7	9.5	8.1	9.3	11.7	11.0	8.2	12.6	11.0	11.0	12.8	13.0	9.9		
Average Monthly Work Days *	22.5	22.6	22.6	22.3	22.6	23.0	23.2	21.9	23.3	23.2	22.7	22.7	22.6	22.1	22.7	22.7	22.6	23.9	24.0	23.3	23.6	23.9	23.9	23.6	23.8	23.7	24.3	23.5	23.3	22.8	*
Average Weekly Work Hours *	41.6	42.4	42.3	41.7	41.1	42.7	41.8	41.2	42.2	43.0	42.1	41.0	39.5	41.8	41.7	41.4	40.0	42.4	41.8	41.1	40.5	43.3	42.8	41.6	41.7	43.0	42.9	41.7	40.7	45.0	*
Median Daily Net Wage (NIS) *	70.0	69.2	70.0	70.0	70.0	70.0	70.0	70.0	73.1	69.2	70.0	70.0	69.2	67.3	65.4	69.2	65.4	69.2	69.2	69.2	65.4	60.0	60.0	57.7	59.8	57.7	60.0	53.8	61.5	70.0	*

Note:

*: Workers in Israel and Settlements are excluded

Q: Quarter, Example: Q1-99 means: First Quarter of 1999

1999

Q1-99 :

:Q

(ILO) 2010-2000

Basic Changes in the Labour Force Indicators in West Bank During 2000 -2010 (ILO Standards)

Indicator	59	58	57	56	55	54	53	52	51	50	49	48	47	46	45	44	43	42	41	40	39	38	37	36	35	34	33	29	19	18	
	Q4-2010	Q3-2010	Q2-2010	Q1-2010	Q4-2009	Q3-2009	Q2-2009	Q1-2009	Q4-2008	Q3-2008	Q2-2008	Q1-2008	Q4-2007	Q3-2007	Q2-2007	Q1-2007	Q4-2006	Q3-2006	Q2-2006	Q1-2006	Q4-2005	Q3-2005	Q2-2005	Q1-2005	Q4-2004	Q3-2004	Q2-2004	Q1-2003	Q4-2000	Q3-2000	
Labour Force Participation Rate	44.5	43.0	43.9	43.2	44.1	43.7	44.4	42.8	42.8	43.4	43.5	42.3	44.0	44.8	44.8	42.7	45.7	44.6	43.7	42.5	42.4	44.1	43.7	41.4	43.4	42.6	42.4	42.5	42.9	45.3	
Full Employment Rate	74.0	73.0	75.9	77.4	74.8	76.9	78.0	74.4	74.1	73.1	75.8	74.1	73.4	70.5	72.0	75.2	75.3	71.1	71.6	69.6	68.9	70.9	74.9	69.7	72.0	69.8	66.3	69.6	68.1	84.8	
Underemployment Rate	9.1	6.9	9.0	6.1	7.1	5.3	6.1	6.1	6.1	6.2	7.9	6.9	7.4	10.9	12.2	7.5	8.5	9.8	10.4	9.0	9.3	9.2	7.9	7.7	6.7	8.0	10.1	8.0	5.6	7.7	
Unemployment Rate	16.9	20.1	15.2	16.5	18.1	17.8	15.9	19.5	19.8	20.7	16.3	19.0	19.2	18.6	15.8	17.3	16.2	19.1	18.0	21.4	21.8	19.9	17.2	22.6	21.3	22.2	23.6	22.4	26.3	7.5	
Employed in Agriculture	15.1	10.9	15.4	12.5	14.2	12.6	14.9	13.1	15.0	13.5	15.7	13.0	15.9	16.1	19.2	15.3	24.0	15.1	16.8	14.3	15.7	16.6	17.0	13.4	21.2	15.1	16.3	17.9	17.1	11.3	
Employed in Construction	15.8	17.2	12.3	17.0	15.1	16.0	16.5	15.1	14.2	16.8	14.1	12.7	13.9	14.8	13.1	12.8	11.1	13.7	13.4	13.6	13.3	14.7	14.4	15.0	13.0	14.3	11.9	13.0	13.3	24.2	
Employed in Manufacturing	12.9	13.6	13.3	15.1	15.0	13.8	13.9	15.4	13.9	15.0	14.5	16.2	15.0	15.4	14.5	14.8	14.2	16.1	14.7	13.2	15.0	15.0	14.7	14.6	13.1	14.1	14.7	13.5	14.6	16.1	
Employed in Services	30.8	31.6	33.5	29.9	30.0	31.5	30.9	31.6	29.8	29.1	30.9	32.8	30.2	28.6	29.1	30.9	27.7	28.2	29.6	30.9	28.9	27.2	27.8	30.1	28.4	29.0	30.0	28.7	29.0	24.6	
Elementary Occupation Workers	17.9	19.6	18.9	19.3	17.4	17.2	16.2	17.5	19.7	16.6	17.0	16.9	16.3	10.4	14.1	15.5	14.1	16.5	16.1	16.2	16.4	15.3	15.8	16.3	14.2	16.0	14.6	12.9	15.2	20.5	
Craft and Related Trade Workers	17.5	18.9	18.6	19.5	17.8	17.8	19.4	19.0	16.3	20.4	18.3	18.5	17.2	17.8	18.2	18.1	16.9	19.6	17.7	18.3	18.2	19.8	18.4	19.3	16.8	18.3	18.2	19.1	18.2	25.7	
Employed in Israel & Settlements	13.8	14.2	13.6	15.3	13.4	14.3	13.8	14.0	16.1	16.3	14.2	15.9	14.0	12.9	11.9	13.7	12.8	14.0	11.8	13.2	13.6	13.6	13.6	14.2	10.9	12.5	11.0	11.7	11.3	24.8	
Employers	7.0	7.0	7.3	7.1	7.3	7.5	7.0	6.0	5.0	4.5	4.3	4.2	5.0	4.7	4.2	3.4	4.4	5.0	4.7	4.8	4.8	5.3	5.2	4.7	4.7	5.1	5.4	3.2	4.8	4.6	
Self - Employed	19.3	20.2	20.6	21.4	22.0	20.2	19.8	20.8	16.4	22.8	24.1	22.9	23.5	24.7	26.3	26.9	24.5	26.7	28.6	28.5	27.9	26.7	27.6	28.3	27.6	27.4	28.3	30.8	24.6	19.9	
Wage Employees	64.0	64.9	62.3	63.3	62.0	63.1	62.5	64.6	67.9	62.2	60.4	64.2	59.7	57.6	55.6	59.0	53.7	55.9	56.0	57.4	56.9	55.0	55.3	58.6	53.8	55.8	55.1	52.7	57.0	66.2	
Unpaid Family Members	9.7	7.9	9.8	8.2	8.7	9.2	10.7	8.6	10.7	10.5	11.2	8.7	11.8	13.0	13.9	10.7	17.4	12.4	10.7	9.3	10.4	13.0	11.9	8.4	13.9	11.7	11.2	13.3	13.6	9.3	
Average Monthly Work Days *	22.1	22.4	22.6	22.0	22.3	22.7	22.6	22.1	22.7	22.7	22.3	22.1	22.2	22.0	22.3	22.2	22.1	23.5	23.8	23.2	23.4	23.7	23.8	23.5	23.6	23.4	24.7	23.9	23.2	24.3	*
Average Weekly Work Hours *	43.2	43.4	43.6	42.8	42.3	43.3	42.7	42.0	43.1	42.8	42.7	41.2	39.9	42.5	42.4	41.9	41.5	42.9	42.7	41.6	40.8	43.7	43.3	42.2	42.5	42.6	43.6	42.4	40.6	46.2	*
Median Daily Net Wage (NIS) *	76.9	76.9	76.9	76.9	76.9	76.9	76.9	76.9	76.9	71.2	76.9	76.9	70.0	70.0	69.2	70.0	67.3	69.2	69.2	70.0	69.2	65.4	65.4	60.0	62.2	61.1	64.6	57.7	61.5	63.2	*

Note:

*: Workers in Israel and Settlements are excluded

Q: Quarter, Example: Q1-99 means: First Quarter of 1999

1999

Q1-99 :

:Q

(ILO) 2010-2000

Basic Changes in the Labour Force Indicators in Gaza Strip During 2000 - 2010 (ILO Standards)

Indicator	59	58	57	56	55	54	53	52	51	50	49	48	47	46	45	44	43	42	41	40	39	38	37	36	35	34	33	29	19	18	
	Q4-2010	Q3-2010	Q2-2010	Q1-2010	Q4-2009	Q3-2009	Q2-2009	Q1-2009	Q4-2008	Q3-2008	Q2-2008	Q1-2008	Q4-2007	Q3-2007	Q2-2007	Q1-2007	Q4-2006	Q3-2006	Q2-2006	Q1-2006	Q4-2005	Q3-2005	Q2-2005	Q1-2005	Q4-2004	Q3-2004	Q2-2004	Q1-2003	Q4-2000	Q3-2000	
Labour Force Participation Rate	36.3	36.0	37.0	36.3	36.9	37.7	36.9	38.9	38.8	38.2	38.0	37.5	36.6	38.9	38.0	38.3	38.0	35.3	35.7	35.3	36.4	37.1	36.5	36.6	36.6	36.0	36.1	37.2	32.0	40.1	
Full Employment Rate	60.3	54.1	53.6	58.0	55.3	53.1	57.7	57.5	48.2	53.0	45.7	65.8	69.3	63.4	66.2	63.8	57.6	60.3	62.0	62.8	69.3	68.4	67.6	64.0	62.2	61.4	58.8	66.6	63.7	81.0	
Underemployment Rate	2.3	5.4	7.1	8.1	5.4	4.6	6.3	5.5	7.0	5.1	8.8	4.4	1.7	3.7	7.4	5.8	7.6	3.4	4.0	3.1	2.5	2.6	2.2	2.0	2.6	1.8	1.5	5.0	2.8	3.5	
Unemployment Rate	37.4	40.5	39.3	33.9	39.3	42.3	36.0	37.0	44.8	41.9	45.5	29.8	29.0	32.9	26.4	30.4	34.8	36.3	34.0	34.1	28.2	29.0	30.2	34.0	35.2	36.8	39.7	28.4	33.5	15.5	
Employed in Agriculture	5.1	8.0	7.8	9.9	7.3	4.9	4.8	8.4	7.1	10.6	12.3	12.5	13.9	12.7	12.7	13.3	14.1	9.2	10.7	10.1	11.4	10.5	12.0	13.1	14.3	12.3	12.3	17.2	16.1	16.2	
Employed in Construction	4.0	4.0	2.5	1.3	1.0	0.9	0.7	1.0	0.8	0.7	0.4	1.6	1.5	3.7	6.2	5.6	4.9	4.6	6.1	8.3	9.8	8.7	9.3	9.2	8.0	7.0	6.4	10.1	3.5	15.9	
Employed in Manufacturing	4.3	5.1	3.8	6.0	5.7	6.0	4.2	5.6	2.7	4.8	4.6	5.5	5.5	5.8	8.0	7.1	6.3	5.7	5.7	7.3	8.7	8.0	9.2	7.3	7.2	8.8	8.7	9.1	7.5	12.3	
Employed in Services	61.3	59.9	63.1	58.2	60.1	63.2	67.0	63.0	67.9	60.7	61.4	52.0	52.2	52.2	48.9	50.5	53.4	56.3	54.1	51.7	49.2	50.0	48.1	50.3	49.5	50.7	52.5	41.4	53.7	38.0	
Elementary Occupation Workers	15.5	16.8	15.1	15.5	13.9	10.3	10.5	10.8	12.1	12.4	11.1	10.0	9.1	14.8	10.5	9.8	10.5	11.2	15.5	15.5	17.1	12.9	13.6	14.1	13.4	13.4	11.3	16.7	9.9	18.0	
Craft and Related Trade Workers	8.4	7.8	7.1	9.4	8.7	7.4	6.8	7.6	5.7	6.9	6.5	11.1	8.4	15.8	14.8	12.7	10.1	9.9	10.4	11.7	13.4	15.5	14.8	12.3	12.5	15.2	14.0	15.4	10.5	21.7	
Employed in Israel & Settlements	-	-	-	-	-	-	-	-	-	-	-	-	-	-	-	-	-	-	-	-	0.5	-	0.5	1.0	-	0.4	0.4	0.1	2.1	2.7	15.4
Employers	3.2	4.7	4.7	4.3	4.8	3.6	3.9	5.3	3.5	4.6	3.3	2.9	2.4	3.0	3.4	4.1	7.2	3.7	3.0	2.5	2.4	2.9	2.9	2.0	1.8	1.9	1.8	2.5	4.0	4.0	
Self - Employed	12.4	14.0	13.6	17.1	16.3	15.4	13.2	14.9	12.0	15.7	16.9	27.3	22.7	20.5	21.5	19.9	15.6	19.9	21.0	21.5	21.7	22.0	23.1	23.1	22.5	21.7	22.9	23.8	18.7	13.6	
Wage Employees	81.8	79.1	80.0	75.0	74.2	78.2	79.5	73.7	79.0	73.3	71.3	58.5	62.5	64.8	64.3	65.8	67.3	70.6	69.8	71.0	69.4	66.6	65.3	67.2	66.7	67.5	65.2	62.1	65.9	71.0	
Unpaid Family Members	2.6	2.2	1.7	3.6	4.7	2.8	3.4	6.1	5.5	6.4	8.5	11.3	12.4	11.7	10.8	10.2	9.9	5.8	6.2	5.0	6.5	8.5	8.7	7.7	9.0	8.9	10.1	11.6	11.4	11.4	
Average Monthly Work Days *	23.7	23.2	23.7	23.1	23.7	23.9	24.9	21.3	25.0	24.8	24.2	20.4	23.8	22.4	23.5	23.5	23.5	24.5	24.3	23.5	23.9	24.3	24.2	23.7	24.1	24.3	23.5	22.8	24.8	23.7	
Average Weekly Work Hours *	37.8	39.9	38.8	39.1	38.1	41.2	39.5	38.8	39.9	43.4	40.0	40.2	38.2	39.7	40.4	40.6	37.7	41.5	40.4	40.4	40.0	42.5	42.0	40.5	40.5	43.6	41.7	40.6	40.6	42.8	
Median Daily Net Wage (NIS) *	50.0	50.0	50.0	46.2	54.7	57.7	57.7	57.7	57.7	50.0	57.7	57.7	60.7	57.7	57.7	61.5	61.5	65.4	67.3	65.4	61.5	53.8	55.8	55.8	53.8	50.0	53.8	50.0	53.8	46.2	

Note:

*: Workers in Israel and Settlements are excluded

Q: Quarter, Example: Q1-99 means: First Quarter of 1999

(-) means there are no enough observations in this section.

*: لا يشمل العاملين من الأراضي الفلسطينية في إسرائيل والمستوطنات

Q: ربع، مثال: Q1-99 : 1999

:(-)

(ILO) 2010-1995

Basic Changes in the Labour Force Indicators in Palestinian Territory During 1995 - 2010 (ILO Standards)

Indicator	2010	2009	2008	2007	2006	2005	2004	2003	2002	2001	2000	1999	1998	1997	1996	1995	
Labour Force Participation Rate	41.1	41.6	41.3	41.9	41.3	40.7	40.4	40.3	38.1	38.7	41.5	41.6	41.4	40.5	40.0	39.0	
Woman Labour Force Participation Rate	14.7	15.5	15.2	15.7	14.5	13.4	13.5	12.8	10.4	10.3	12.7	12.3	11.3	11.5	11.0	11.2	
Full Employment Rate	69.2	69.5	67.4	70.5	68.5	69.9	66.8	68.1	64.4	70.9	80.9	82.8	79.1	70.4	64.3	60.7	
Underemployment Rate	7.1	5.9	6.6	8.0	7.9	6.6	6.4	6.3	4.3	3.9	5.0	5.4	6.5	9.3	11.9	21.1	
Unemployment Rate	23.7	24.5	26.0	21.5	23.6	23.5	26.8	25.6	31.3	25.2	14.1	11.8	14.4	20.3	23.8	18.2	
Unemployment Rate among women	26.8	26.4	24.2	19.1	20.5	22.2	20.0	18.2	17.0	13.8	12.4	13.0	15.2	20.1	19.5	16.2	
Employed in Agriculture	11.8	11.8	13.4	15.6	16.1	14.6	15.9	15.7	14.9	11.7	13.7	12.6	12.1	13.1	14.2	12.7	
Employed in Construction	13.2	11.7	10.9	11.0	11.1	12.9	11.7	13.1	10.9	14.5	19.7	22.1	22.0	18.4	16.8	19.2	
Employed in Manufacturing	11.4	12.1	12.1	12.5	12.4	13.0	12.7	12.5	12.9	13.9	14.3	15.5	15.9	16.4	16.8	18.0	
Employed in Services	38.3	39.6	38.4	35.8	35.5	34.4	34.9	32.8	35.7	34.6	29.9	28.1	27.1	28.2	29.2	25.6	
Elementary Occupation Workers	18.1	15.7	15.9	14.0	14.9	15.5	14.3	14.1	14.1	15.9	21.1	29.7	31.0	28.9	28.7	18.3	
Craft and Related Trade Workers	15.9	15.6	15.6	16.1	16.1	17.5	17.1	18.7	17.5	19.0	22.0	22.7	24.7	24.6	24.0	27.5	
Employed in Israel & Settlements	10.5	10.2	11.6	9.4	9.6	9.9	8.7	9.7	10.3	13.8	19.6	23.0	21.7	17.1	14.1	16.2	
Employers	6.4	6.3	4.2	4.0	4.6	4.3	4.1	3.5	3.7	4.7	4.6	5.5	5.8	5.3	5.5	6.9	
Self - Employed	18.8	19.2	20.7	24.2	25.0	26.1	26.5	27.8	26.8	24.0	19.6	18.7	21.0	22.9	22.3	21.2	
Wage Employees	67.6	66.5	65.3	59.8	59.3	59.5	58.3	57.2	59.2	62.1	66.1	67.8	65.3	62.0	61.4	61.7	
Unpaid Family Members	7.2	8.0	9.7	12.0	11.1	10.1	11.1	11.5	10.3	9.2	9.7	8.0	7.9	9.8	10.8	10.2	
Average Monthly Work Days *	22.5	22.7	23.0	22.6	23.4	23.8	23.7	23.2	23.3	23.9	23.2	22.6	23.0	22.0	22.0	21.0	*
Average Weekly Work Hours *	42.0	41.7	42.1	41.1	41.3	42.0	42.5	41.7	40.6	42.1	43.1	44.2	45.0	44.0	43.5	42.1	*
Median Daily Net Wage (NIS) *	70.0	70.0	70.0	69.2	69.2	60.0	57.7	55.8	57.7	57.7	69.2	69.2	57.7	50.0	46.2	46.3	*

Note:

*: Workers in Israel and Settlements are excluded

(ILO) 2010-1995

Basic Changes in the Labour Force Indicators in West Bank During 1995 - 2010 (ILO Standards)

Indicator	2010	2009	2008	2007	2006	2005	2004	2003	2002	2001	2000	1999	1998	1997	1996	1995	
Labour Force Participation Rate	43.7	43.8	43.0	44.1	44.1	42.9	42.5	41.8	40.0	41.5	43.6	43.4	44.2	43.2	42.0	40.6	
Women Labour Force Participation Rate	17.2	17.4	17.1	18.3	17.9	15.8	15.9	14.7	12.4	12.0	13.8	14.1	14.3	14.5	13.2	12.6	
Full Employment Rate	75.0	76.0	74.2	72.8	72.0	71.2	68.8	68.7	66.4	73.8	81.7	83.5	80.1	71.1	67.6	65.3	
Underemployment Rate	7.8	6.2	6.8	9.5	9.4	8.5	8.3	7.5	5.4	4.7	6.2	7.0	8.4	11.6	12.8	20.7	
Unemployment Rate	17.2	17.8	19.0	17.7	18.6	20.3	22.9	23.8	28.2	21.5	12.1	9.5	11.5	17.3	19.6	13.9	
Unemployment Rate Among Women	19.7	18.8	16.7	15.5	17.6	18.3	16.6	15.8	14.0	10.9	9.9	11.1	12.8	17.7	16.0	13.0	
Employed in Agriculture	13.3	13.7	14.3	16.6	17.8	15.7	16.9	14.9	14.1	11.8	12.5	11.5	13.8	15.1	16.2	13.3	
Employed in Construction	16.8	15.6	14.5	13.6	12.9	14.4	13.0	14.3	12.7	18.0	22.2	23.9	22.7	19.1	18.3	20.3	
Employed in Manufacturing	13.7	14.5	14.9	14.9	14.6	14.8	14.0	14.0	14.5	15.4	15.4	16.5	16.8	17.2	17.6	18.8	
Employed in Services	30.6	31.0	30.6	29.8	29.0	28.5	29.5	29.4	31.1	28.0	25.5	24.7	23.0	23.8	24.2	22.6	
Elementary Occupation Workers	18.8	17.0	17.4	15.8	15.6	16.0	14.8	13.3	14.1	17.6	21.9	31.1	30.5	28.7	28.7	18.2	
Craft and Related Trade Workers	18.6	18.5	18.4	17.8	18.1	18.9	18.0	19.9	19.1	20.7	23.3	22.9	25.0	25.0	25.1	28.7	
Employed in Israel & Settlements	14.2	13.9	15.6	13.1	13.0	13.8	11.6	12.5	13.3	18.0	22.4	25.9	24.0	19.5	16.6	20.2	
Employers	7.1	7.0	4.5	4.4	4.4	5.0	5.0	4.1	4.1	4.6	5.1	6.6	6.5	5.9	6.0	7.1	
Self - Employed	20.3	20.7	21.6	25.4	27.0	27.6	28.1	29.3	27.8	25.6	20.6	18.6	21.5	23.6	23.5	21.3	
Wage Employees	63.6	63.0	63.7	57.9	55.7	56.4	55.1	55.3	57.5	60.1	64.7	66.5	63.0	59.3	59.0	61.3	
Unpaid Family Members	9.0	9.3	10.2	12.3	12.6	11.0	11.8	11.3	10.6	9.7	9.6	8.3	9.0	11.2	11.5	9.9	
Average Monthly Work Days *	22.2	22.4	22.4	22.2	23.1	23.6	24.0	23.7	22.8	23.6	24.4	23.5	23.0	23.0	22.6	22.0	*
Average Weekly Work Hours *	43.3	42.5	42.5	41.7	42.2	42.5	43.0	42.3	40.9	43.2	43.6	44.6	45.0	43.0	43.5	43.0	*
Median Daily Net Wage (NIS) *	76.9	76.9	76.9	70.0	69.2	65.4	61.5	60.0	60.0	60.0	61.5	60.0	50.0	46.3	44.7	42.3	*

Note:

*: Workers in Israel and Settlements are excluded

(ILO) 2009-1995

Basic Changes in the Labour Force Indicators in Gaza Strip During 1995 - 2009 (ILO Standards)

Indicator	2010	2009	2008	2007	2006	2005	2004	2003	2002	2001	2000	1999	1998	1997	1996	1995	
Labour Force Participation Rate	36.4	37.6	38.1	38.0	36.1	36.7	36.4	37.5	34.4	33.3	37.5	38.0	36.4	35.7	36.4	35.4	
Women Labour Force Participation	10.2	12.2	11.7	11.0	8.1	9.0	9.1	9.2	6.5	7.1	10.6	8.8	5.9	6.3	7.0	7.3	
Full Employment Rate	56.5	55.9	53.0	65.6	60.6	67.4	62.5	67.2	60.1	63.9	79.0	81.2	76.8	68.8	57.5	48.6	
Underemployment Rate	5.7	5.5	6.4	4.7	4.6	2.3	2.1	3.6	1.8	1.9	2.3	1.9	2.3	4.4	10.0	22.0	
Unemployment Rate	37.8	38.6	40.6	29.7	34.8	30.3	35.4	29.2	38.1	34.2	18.7	16.9	20.9	26.8	32.5	29.4	
Unemployment Rate among Women	47.2	45.8	42.8	29.7	32.3	35.2	31.6	26.8	28.4	24.2	18.5	19.3	25.2	29.8	31.4	28.6	
Employed in Agriculture	7.7	6.4	10.7	13.1	11.1	11.7	13.4	17.5	16.7	11.4	16.5	15.2	8.0	8.0	9.1	10.8	
Employed in Construction	3.0	0.9	0.9	4.3	6.0	9.3	8.2	10.4	6.3	4.4	13.5	17.8	20.5	16.5	13.1	15.4	
Employed in Manufacturing	4.8	5.4	4.4	6.6	6.3	8.3	9.1	9.2	8.9	9.7	11.5	13.1	13.6	14.5	14.9	15.2	
Employed in Services	60.6	63.3	60.2	50.9	53.7	49.4	49.1	40.8	47.5	53.3	41.0	36.5	37.0	38.9	41.4	35.2	
Elementary Occupation Workers	15.8	11.4	11.3	10	13.2	14.4	13.0	15.8	14.3	11.0	18.7	26.4	30.9	29.5	29.3	18.4	
Craft and Related Trade Workers	8.2	7.6	7.7	11.7	10.5	14.0	14.7	15.9	13.4	14.2	18.9	22.2	23.8	23.6	21.2	23.5	
Employed in Israel & Settlements	-	-	-	-	-	0.4	1.1	3.1	2.5	1.9	12.9	15.7	16.2	11.0	8.1	3.3	
Employers	4.2	4.4	3.5	3.2	4.2	2.6	1.9	2.2	2.6	5.0	3.3	2.8	4.0	3.7	4.4	6.1	
Self - Employed	14.3	14.9	18.4	21.2	19.4	22.4	22.2	24.5	24.3	19.5	17.2	19.1	19.7	21.0	19.4	20.4	
Wage Employees	78.9	76.4	70.0	64.4	69.6	67.1	66.5	61.7	63.6	67.7	69.5	71.1	71.0	68.4	67.3	62.6	
Unpaid Family Members	2.6	4.3	8.1	11.2	6.8	7.9	9.4	11.6	9.5	7.8	10.0	7.0	5.3	6.9	8.9	10.8	
Average Monthly Work Days *	23.4	23.6	24.7	23.3	24.0	24.0	23.2	22.6	24.1	24.6	24.5	24.0	24.0	24.0	23.3	21.7	*
Average Weekly Work Hours *	38.8	39.4	40.8	39.9	39.9	41.2	41.6	40.6	40.0	40.1	41.7	43.2	43.0	43.0	44.0	43.2	*
Median Daily Net Wage (NIS) *	46.2	57.7	57.7	57.7	65.4	57.7	52.5	50.0	50.0	50.0	50.0	46.2	40.0	38.5	34.6	34.6	*

Note:

*: Workers in Israel and Settlements are excluded

(-) means there are no enough observations in this section.

The date of field work for every round

Round Number	The Round		
Round (28)	January - March, 2003	2003	- (28)
Round (29)	April - June, 2003	2003	- (29)
Round (30)	July - September, 2003	2003	- (30)
Round (31)	October -December, 2003	2003	- (31)
Round (32)	January - March, 2004	2004	- (32)
Round (33)	April - June, 2004	2004	- (33)
Round (34)	July - September, 2004	2004	- (34)
Round (35)	October -December, 2004	2004	- (35)
Round (36)	January - March, 2005	2005	- (36)
Round (37)	April - June, 2005	2005	- (37)
Round (38)	July - September, 2005	2005	- (38)
Round (39)	October -December, 2005	2005	- (39)
Round (40)	January - March, 2006	2006	- (40)
Round (41)	April - June, 2006	2006	- (41)
Round (42)	July - September, 2006	2006	- (42)
Round (43)	October -December, 2006	2006	- (43)
Round (44)	January - March, 2007	2007	- (44)
Round (45)	April - June, 2007	2007	- (45)
Round (46)	July - September, 2007	2007	- (46)
Round (47)	October -December, 2007	2007	- (47)
Round (48)	January - March, 2008	2008	- (48)
Round (49)	April - June, 2008	2008	- (49)
Round (50)	July - September, 2008	2008	- (50)
Round (51)	October –December, 2008	2008	- (51)
Round (52)	January - March, 2009	2009	- (52)
Round (53)	April - June, 2009	2009	- (53)
Round (54)	July - September, 2009	2009	- (54)
Round (55)	October –December, 2009	2009	- (55)
Round (56)	January – March, 2010	2010	- (56)
Round (57)	April –June, 2010	2010	- (57)
Round (58)	July - September, 2010	2010	- (58)
Round (59)	October –December, 2010	2010	- (59)