



5.4 2009

6.9 4.5
 15 %15.8
 %20.2 29-
 %0.8 %30.1

2011/05/30

2010

2011/5/31

18

%22.5 2010

18

11

%14.6

%26.9

%15

(%32.2)

(%11.3)

%2.7

%30.3

%2.3

%42.2

17.7

%18.2

%8.9 %

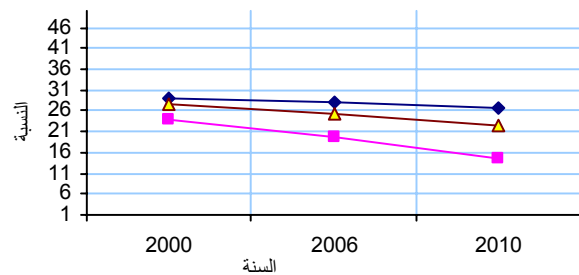
%27.5

2000

18

2010 2006 2000

الارض الفلسطينية قطاع غزة الضفة الغربية



(970/972) 02-2982700:

(970/972) 02- 2982710 :

1800300300 :

diwan@pcbs.gov.ps :