



Palestinian Central Bureau of Statistics

Statistical Data Catalogue

Your **Golden** Ticket to Palestine's Official Statistics

2 0 1 4 - 1 9 9 4

Contact Us

**For corr.: P.O. Box 1647,
Ramallah–Palestine**

Tel.: (972/0) 2 2982700

Fax: (972/0) 2 2982710

WebSite: <http://www.pcbs.gov.ps>

E-mail: diwan@pcbs.gov.ps

Labour Force



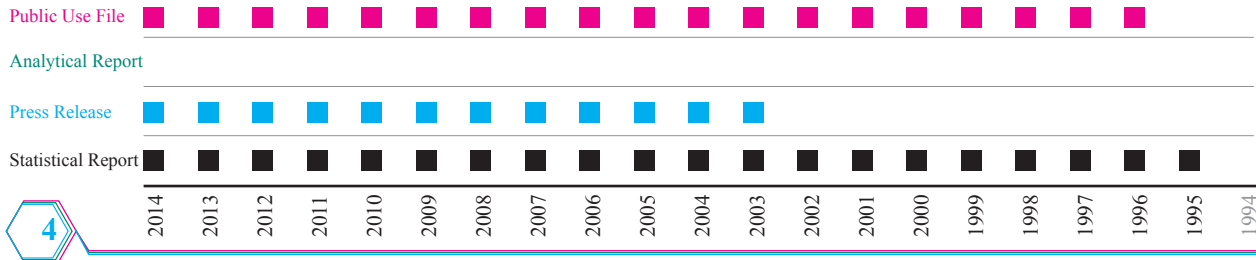
The main objective is to collect data from both males and females manpower (persons aged 15 years and over) who participate in labour force.

There are several indicators that include: employment, unemployment and underemployment, in addition to the size and structure of the Palestinian labour force. Data collected at different points in time provide a basis for monitoring current trends and changes in the labour market and in the employment situation.



Olive Press

Olive press survey provides statistical data about the olive presses distribution according to operational status, automation level, quantity of pressed olives and extracted oil, number of employees and their compensations, olive pressing costs including material inputs, electricity, water and fuel. ...etc.



Household Expenditure and Consumption

The survey provides information on standards of living and patterns of consumption and expenditure among Palestinian households and individuals on different kinds of goods and services such as food groups (bread and cereals, meat and poultry, vegetables...etc) and other non food groups such as (clothing and footwear, housing, education, health care...etc).



Public Use File



Analytical Report

Press Release



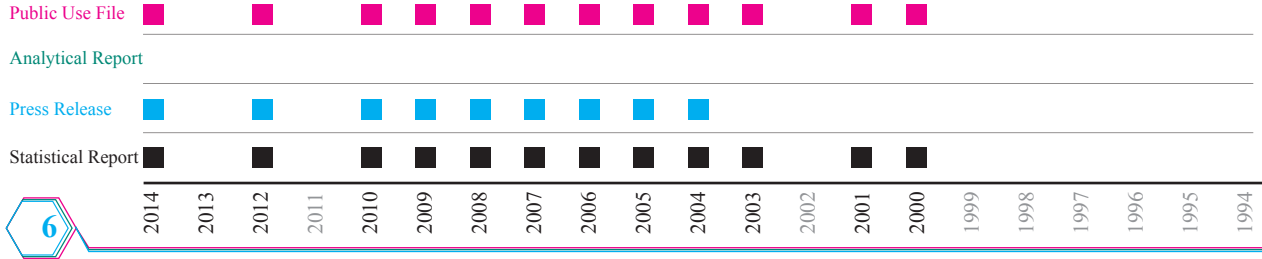
Statistical Report



Health Facilities



This survey provides environment statistical indicators about health care centers, water, wastewater and solid waste. The survey also provides data about wastewater produced from health care centers activities including the methods of wastewater disposal and treatment type.



Population, Housing and Establishment Census



The main objective of the census is to provide figures about the Palestinian population and their geographical distribution, demographic, social and economic characteristics, in addition to housing and establishments characteristics, and frame of agricultural holdings.

Public Use File



Analytical Report



Press Release



Statistical Report

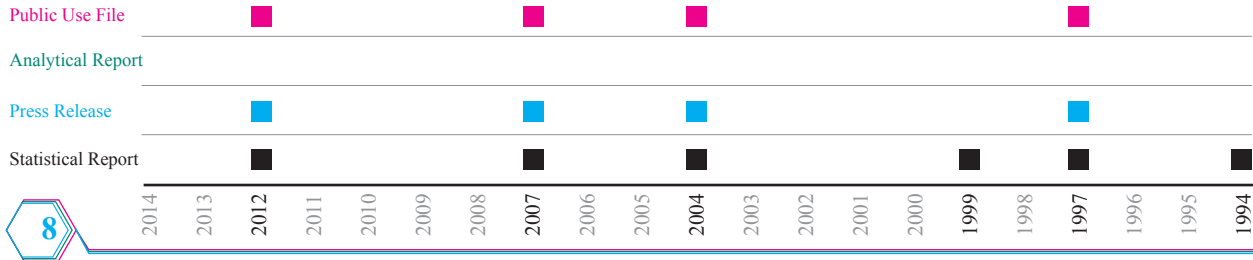


2014 2013 2012 2011 2010 2009 2008 2007 2006 2005 2004 2003 2002 2001 2000 1999 1998 1997 1996 1995 1994

Establishment Census



The Establishment Census provides statistical data on the economic characteristics of establishments in Palestine, which includes indicators on geographical distribution size of employment in various economic activities and distribution by sex, establishment distribution by economic organization, legal status, ownership and operational status.



Health Survey Series

Measuring Household Health



This survey provides detailed indicators on the status of health of mothers, children and focusing on reproductive health services, educational level and nutrition.

Public Use File

Analytical Report

Press Release

Statistical Report



2014 2013 2012 2011 2010 2009 2008 2007 2006 2005 2004 2003 2002 2001 2000 1999 1998 1997 1996 1995 1994

Time Use



This survey sheds light on the main daily activities of the Palestinian

It presents data on the time spent on the various activities such as work activities inside or outside establishments, housework, household care activities, voluntary activities, educational activities, cultural and social activities, mass media use and personal care.

Public Use File



Analytical Report



Press Release



Statistical Report



Environmental Economic Survey



The survey provides reliable data on environmental reality in the economic sector in the Palestinian Territory, including the methods used to handle the solid waste and waste water. Mainly, it provides data about the main sources of water, methods of industrial solid waste disposal and the periodicity of collection by the local authority.

Public Use File



Analytical Report



Press Release



Statistical Report



Socio-Economic Conditions



It provides indicators about Palestinian socio-economic characteristics, household expenditure and income, coping strategies used by the households, households basic needs, received assistants, access to the main services and place of work.

Public Use File



Analytical Report

Press Release



Statistical Report



Household Environmental Survey

The survey provides statistical environmental indicators about household sector on the topics of water, air pollution, solid wastes and wastewater. It also provides statistical data about water consumption in the houses and sources of water supply, household solid waste, disposal methods and quantities.



Public Use File



Analytical Report

Press Release

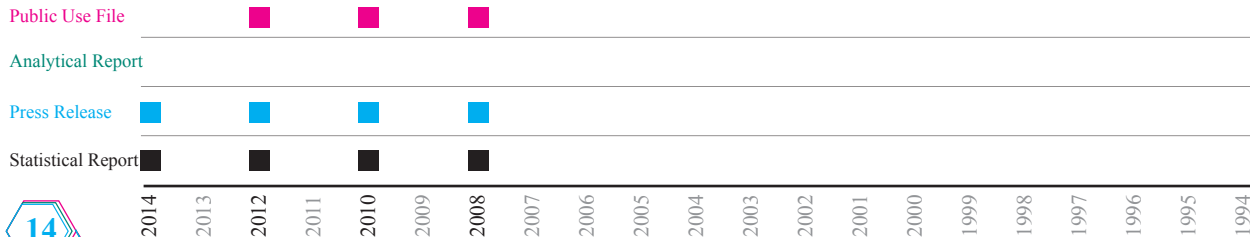


Statistical Report



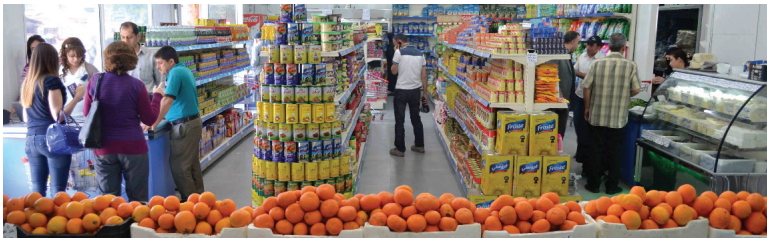
Environmental Education Sector

This survey provides basic statistics on various aspects of environment, including variables of outside effect on education building environment, water consumption in terms of sources, management of solid waste, transportation, disposal and management of waste water generated in terms of disposal method.



Internal Trade

This survey provides basic indicators about number of enterprises and persons engaged, value of output, intermediate consumption and stocks, value added components, assets and capital formation, payments and transfers.



Public Use File



Analytical Report

Press Release



Statistical Report



Household Energy

Household energy survey provides data about seasonal electricity consumption in the households, seasonal fuel types consumption, biomass (wood, coal) consumption, types of fuel by different activities (cooking, baking, conditioning, lighting and water heating) in the household.



Domestic Tourism

The Domestic Tourism survey provides data on domestic tourism trips, length of stay in trips, destination of tourism trips, means of transportations during the trip, organizing the trip and expenditure during the trip.



Public Use File



Analytical Report

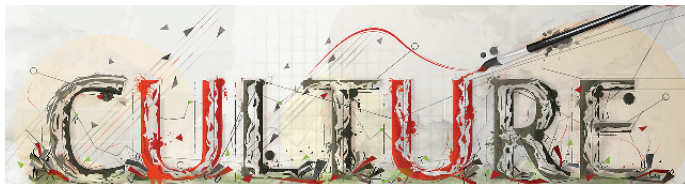
Press Release



Statistical Report



Household Culture



Household Culture survey highlights the role of mass media in disseminating culture. Indicators cover reading habits, reading newspapers, listening to the radio, watching television, interaction with cultural institutions, engagement in cultural activities and main obstacles to engaging in cultural activities.

Public Use File



Analytical Report

Press Release

Statistical Report



Industry Survey

Industrial survey indicators about number of establishments, number of employees with various classifications, provides compensations, output value, value of intermediate consumption (production requirements and expenses) of goods and services used, the value added and gross fixed capital formation.



Public Use File



Analytical Report

Press Release



Statistical Report



Services Survey



The Services survey provides statistical indicators about active enterprises in private and nongovernmental organization sector in the Palestinian economy. These indicators include the number of enterprises, number of employed persons and their compensation, output, intermediate consumption, value added and gross fixed capital formation (GFCF).

Public Use File



Analytical Report

Press Release



Statistical Report



Household Violence

The Household Violence survey provides comprehensive and representative data on violence in the Palestinian Territory, especially against women, youth, children elderly and married males.



Public Use File



Analytical Report

Press Release



Statistical Report



Outbound Tourism



This survey provides indicators about outbound tourism expenditure which is related to the overnight-stay tourists, such as the member of households that took part in the trip, the main purpose of the visit, main characteristics of the households that conducted/did not conduct trips, length of stay, amount and mode of expenditure during the trips.

Public Use File



Analytical Report

Press Release



Statistical Report



Finance and Insurance



This survey provides statistical indicators about financial establishments such as number of operating enterprises, employed persons and their compensations, output and intermediate consumption, value added Etc.

Public Use File



Analytical Report

Press Release



Statistical Report



Victimization and Crime

This survey provides basic indicators on various aspects of victimization such as: households and persons victimized by criminal offense, type of criminal offense, crime location, perpetrator of crime, crime reporting, reported crime underwent legal proceedings, physical harm and tangible losses.



Public Use File



Analytical Report

Press Release



Statistical Report



Transport

Outside Establishments Sector

Transport and storage survey provides number of statistical indicators about active enterprises in private sector in the Palestinian economy. These indicators include the number of enterprises, number of employed persons and their compensation, output, intermediate consumption, value added and gross fixed capital formation (GFCF).



Public Use File



Analytical Report

Press Release



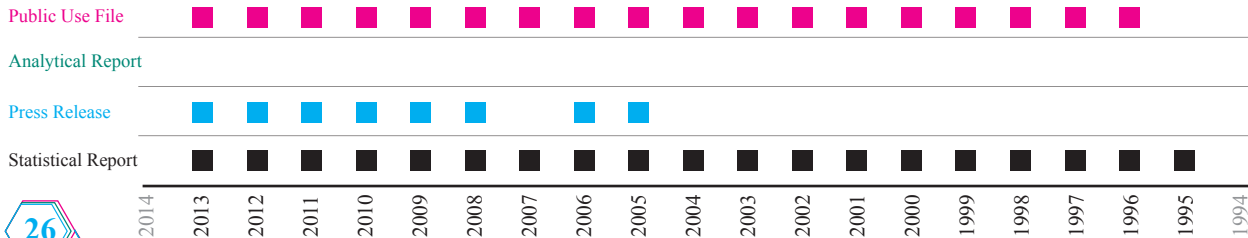
Statistical Report



2014 2013 2012 2011 2010 2009 2008 2007 2006 2005 2004 2003 2002 2001 2000 1999 1998 1997 1996 1995 1994

Transport and Storage (Formal Sector)

This survey provides number of transport vehicles and employed persons by economic activity, value of output, intermediate consumption and fixed assets and other selected variables.



Housing Conditions



This survey provides indicators related to housing conditions (type and tenure of housing units, availability of durable goods, connection to public network (electricity, water, sanitation and telephone), housing density, number of rooms and households needs.

Public Use File

Analytical Report

Press Release

Statistical Report

Information and Communications

The Communication and Information survey provides number of statistical indicators about active enterprises in private sector in the Palestinian economy. These indicators include number of enterprises, number of employed persons and their compensation, output, intermediate consumption, value added and gross fixed capital formation (GFCF).

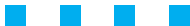


Public Use File

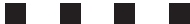


Analytical Report

Press Release



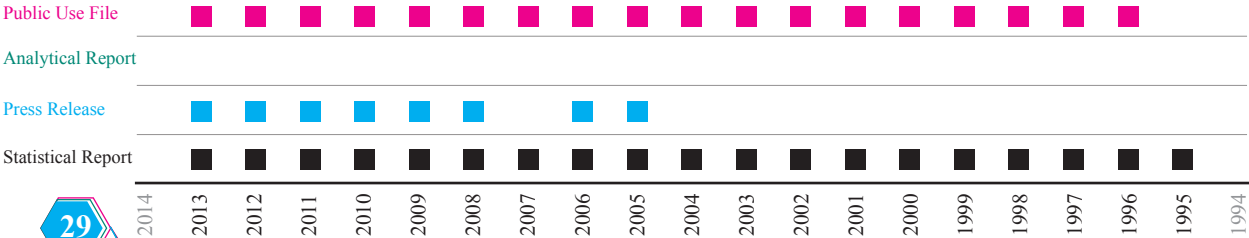
Statistical Report



Construction Contractors



It provides a set of statistical indicators including number of establishments, number of employees with various classifications, compensations, output value, value of intermediate consumption (production requirements and expenses) of goods and services used, value added, and gross fixed capital formation.

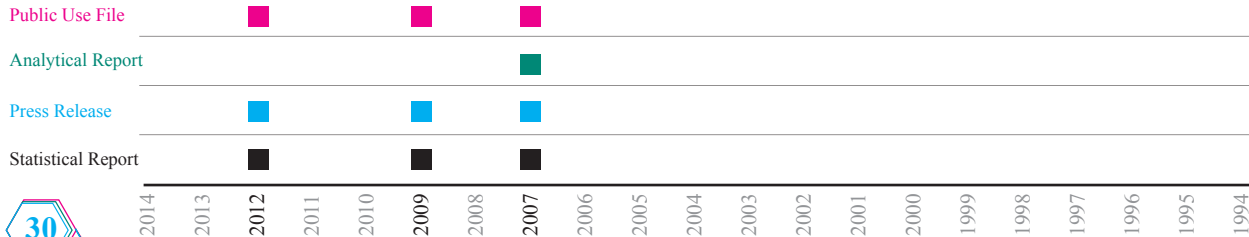


* Data and indicators of this survey are published in series of economic surveys since 2001.

Business ICT



The survey aims mainly to provide comprehensive statistical data on the availability of the means, access and use of ICT tools in the establishments by major economic activities, employment size, places and different goals as well as main features for the use of ICT.



household ICT



The main objective of this survey is to provide statistical data on Information and Communications Technology used by Palestinian households, including ownership of a computer, forms of telecommunications, a satellite dish and access and use of the Internet.

Public Use File



Analytical Report

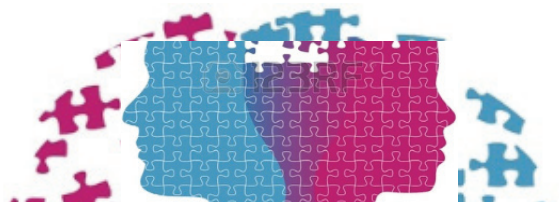
Press Release



Statistical Report



Gender Statistics



It provides indicators about gender issues from many relevant perspectives: demography, education and culture, research and development, information technology, time use, health, labour force and financial institutions.

Public Use File

Analytical Report

Press Release

Statistical Report

| | | | | | | | | | | | | | | | | | | | | |
|------|------|------|------|------|------|------|------|------|------|------|------|------|------|------|------|------|------|------|------|------|
| 2014 | 2013 | 2012 | 2011 | 2010 | 2009 | 2008 | 2007 | 2006 | 2005 | 2004 | 2003 | 2002 | 2001 | 2000 | 1999 | 1998 | 1997 | 1996 | 1995 | 1994 |
|------|------|------|------|------|------|------|------|------|------|------|------|------|------|------|------|------|------|------|------|------|

| Government | Percentage |
|---------------------|------------|
| Current government | 100% |
| Previous government | 0% |

Settlements

The data presents quantitative descriptions of a number of main indicators related to Israeli settlements and settlers, nature of settlements, geographical spread, prevalent ideology, and other related subjects.

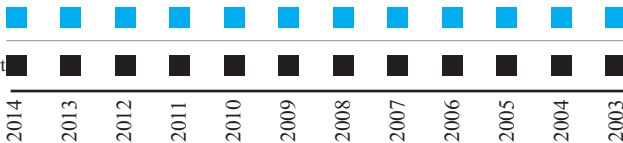


Public Use File

Analytical Report

Press Release

Statistical Report



Performance of Palestinian Economy



Performance of Palestinian Economy provides an overview of the economic reality and the nature of the economy through the study of economic indicators that include GDP, labor market, prices, balance of payments, foreign trade, public finance, tourism and building licenses.

Public Use File

Analytical Report

Press Release

Statistical Report



Foreign Investment



The Foreign Investment survey collects details about the stocks and flows of foreign investments for residential enterprises, financial liabilities of residential enterprises divided by economic activity and country. The assets and liabilities are fully consistent with the financial account in the balance of payments.

Public Use File

Analytical Report

Press Release

Statistical Report



2014 2013 2012 2011 2010 2009 2008 2007 2006 2005 2004 2003 2002 2001 2000 1999 1998 1997 1996 1995 1994

Child Statistics



It provides indicators related to the rights of Palestinian children, highlighting disadvantaged groups and the lack of access to basic services, namely education, health, security, culture and entertainment, as well as issues related to children under military occupation and early childhood development.

Public Use File

Analytical Report

Press Release

Statistical Report

Research and Development



The survey provides statistical indicators on human resources in Research and Development, type of research and its purpose, amount spent on each type of research, and the most important achievements, such as the number of patents or the publication of the research locally and internationally

Public Use File



Analytical Report

Press Release



Statistical Report



Foreign Trade

Foreign Trade provides data on imports and exports and the net trade balance by month, year and trading partners. It also provides data by point of entry and exit, the nature of the structural composition of goods and services and their relative importance in the economy.



Public Use File

Analytical Report

Press Release

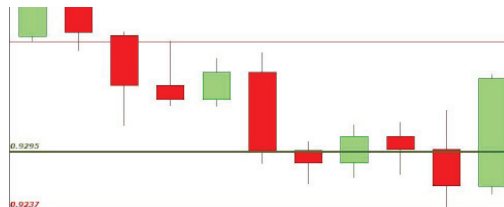
Statistical Report



Price Index

Consumer, Producer and Wholesal

Consumer Price Index survey provides data about changes in consumer prices by major groups of expenditure. Producer Price Index provides data on Producer Price changes for local and exported goods by major group. Industrial Production Index and Wholesale Price Index provide data on wholesale price changes for local and imported goods by major group in Palestine.



Public Use File

Analytical Report

Press Release

Statistical Report

Localities

The survey provides data on local authorities, services, public utilities, in addition to other, relevant indicators.



Public Use File

Analytical Report

Press Release

Statistical Report



| | | | | | | | | | | | | | | | | | | | | |
|------|------|------|------|------|------|------|------|------|------|------|------|------|------|------|------|------|------|------|------|------|
| 2014 | 2013 | 2012 | 2011 | 2010 | 2009 | 2008 | 2007 | 2006 | 2005 | 2004 | 2003 | 2002 | 2001 | 2000 | 1999 | 1998 | 1997 | 1996 | 1995 | 1994 |
|------|------|------|------|------|------|------|------|------|------|------|------|------|------|------|------|------|------|------|------|------|

Existing Buildings



This survey aims to measure economic indicators such as the cost of construction, the cost of new additions, and other related indicators.

Public Use File

Analytical Report

Press Release

Statistical Report

42

| | | | | | | | | | | | | | | | | | | | | |
|------|------|------|------|------|------|------|------|------|------|------|------|------|------|------|------|------|------|------|------|------|
| 2014 | 2013 | 2012 | 2011 | 2010 | 2009 | 2008 | 2007 | 2006 | 2005 | 2004 | 2003 | 2002 | 2001 | 2000 | 1999 | 1998 | 1997 | 1996 | 1995 | 1994 |
|------|------|------|------|------|------|------|------|------|------|------|------|------|------|------|------|------|------|------|------|------|

Building Licenses



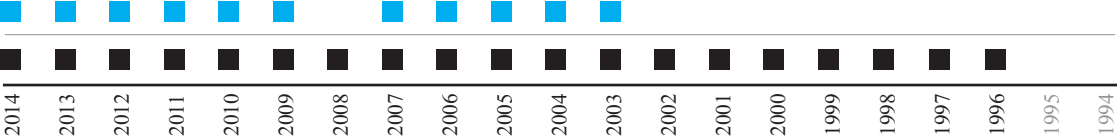
It provides statistical data which covers various aspects of the construction activity which includes the number of issued building licenses, the licensed area, the number and the area of licensed dwellings and the number and the area of licensed stores.

Public Use File

Analytical Report

Press Release

Statistical Report



Balance of Payments

The Balance of Payments (BOP) is an account measuring transactions between residents and non-residents during a given period. It provides data on transactions occur between the domestic economy and the rest of the world.



Public Use File

Analytical Report

Press Release

Statistical Report



Agricultural Statistics

It provides data about the holdings (plant, animal, mixed), and the agricultural holders, cultivated area and numbers of livestock.



Public Use File

Analytical Report

Press Release

Statistical Report

Demography

The Demographic survey provides detailed statistical data on the population structure, fertility, fertility preference, infant and child mortality, maternal and adult mortality, internal and international migration, family and household composition, and many other important demographic subjects.



Public Use File

Analytical Report

Press Release

Statistical Report



Other Surveys

- Ownership and Access to Resources Survey 1999
- Mass Media Survey 2000
- Nutrition Survey 2002
- Small and Medium Enterprise Survey 2002
- Youth Survey 2003
- Informal Sector Survey 2003
- Child labor Survey 2004
- Computer, Internet & Mobile Phone Survey 2004
- Access to Health Services Survey 2003
- Farm Structure Survey 2005
- Assessment of Direct Internet Access Project 2005
- Health Care Providers and Beneficiaries Survey 2005
- Conditions of Graduates of High Education and Vocational Training Survey 2006
- Agriculture Census 2010
- Governance Survey 2010
- Livestock Survey 2012



Other Surveys

- Work conditions Survey 1997, 2004
- Tree horticulture Survey 2006
- The impact of the Israeli measures on the Palestinian Households 2006
- Palestinian labour migration to Ramallah and Al Bireh 2008
- The impact of war and the blockade of the Gaza Strip 2009
- Individuals with disabilities in the Palestinian Territory 2011
- Labour Force Survey of Palestinian refugees in Lebanon 2011
- Multiple Indicator Cluster Survey (MICS) for the camps and communities of Palestinians in Lebanon 2011
- Emissions to air 2011
- Price indices for the costs of construction, roads, water systems and sanitation
- Industrial production index

