

السلطة الوطنية الفلسطينية
الجهاز المركزي للإحصاء الفلسطيني

مشروع النشر والتحليل لبيانات التعداد الزراعي، 2010

تفتت الحيازات الزراعية الفلسطينية واثّر ذلك على
الانتاج والإنتاجية

إعداد

معهد أبحاث السياسات الاقتصادية (ماس)

آب/أغسطس، 2013

تم إعداد هذا التقرير حسب الإجراءات المعيارية المحددة في ميثاق الممارسات
للإحصاءات الرسمية الفلسطينية 2006

© رمضان، 1434هـ - آب، 2013.
جميع الحقوق محفوظة.

في حالة الاقتباس، يرجى الإشارة إلى هذه المطبوعة كالتالي:

الجهاز المركزي للإحصاء الفلسطيني، 2013. مشروع النشر والتحليل لبيانات التعداد الزراعي 2010، تفتت الحيازات
الزراعية واثّر ذلك على الانتاج والإنتاجية. رام الله - فلسطين.

جميع المراسلات توجه إلى:

الجهاز المركزي للإحصاء الفلسطيني
ص.ب. 1647، رام الله - فلسطين

هاتف: 2 298 7200 (970/972)

فاكس: 2 298 7210 (970/972)

الرقم المجاني: 1800300300

بريد إلكتروني: diwan@pcbs.gov.ps

صفحة إلكترونية: <http://www.pcbs.gov.ps>

(Economies of Scale)

1.1

2010

)

.(

:

-
-
-
-
-
-
-
-
-

2.1

:
()

-
-
-
-
-

-
-

(Gini Coefficient)

-
-

3.1

2010

4.1

(One-way (t-test) ANOVA)
()

(Normality)
.05

5.1

(2011) %71

()

6.1

.(Bizimana, et al., 2004)

.(Partikh and Nagaragan, 2004)

1.01

1.2

(1)

97,069

%34

32,873

%71.7
%28.3

1,202,723.51

%80

956,466.45

(9.99-5)

%11

130,738.44

%90

%10

%51.6

%9.6

%80

%28.4

(2)

(1)

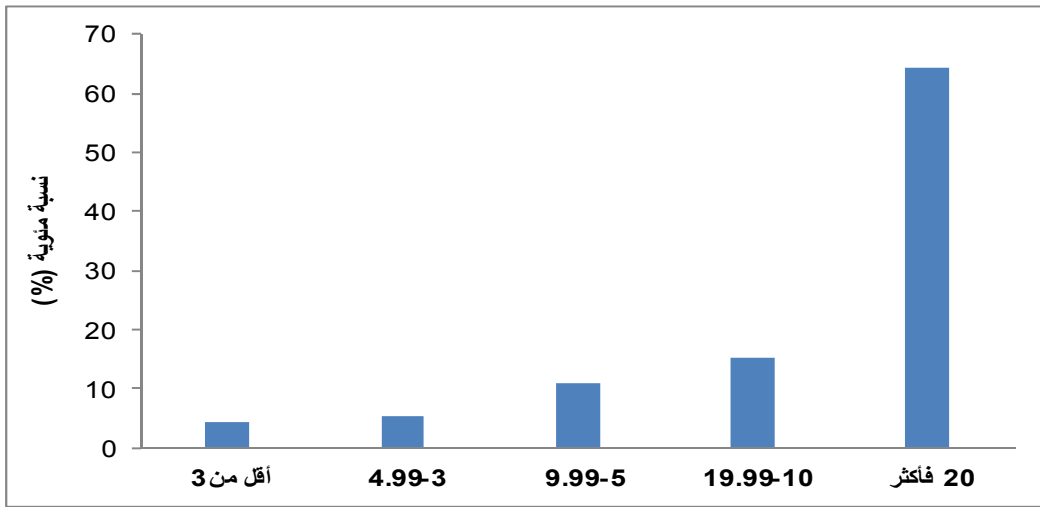
2010

:1

						()
4.4	4.4	53,353.14	33.9	33.9	32,873	3
9.6	5.2	62,165.48	51.6	17.7	17,219	4.99-3
20.5	10.9	130,738.44	71.7	20.1	19,487	9.99-5
35.8	15.3	184,337.30	85.8	14.2	13,747	19.99-10
100	64.2	772,129.15	100	14.2	13,743	20
	100	1,202,723.51		100	97,069.00	

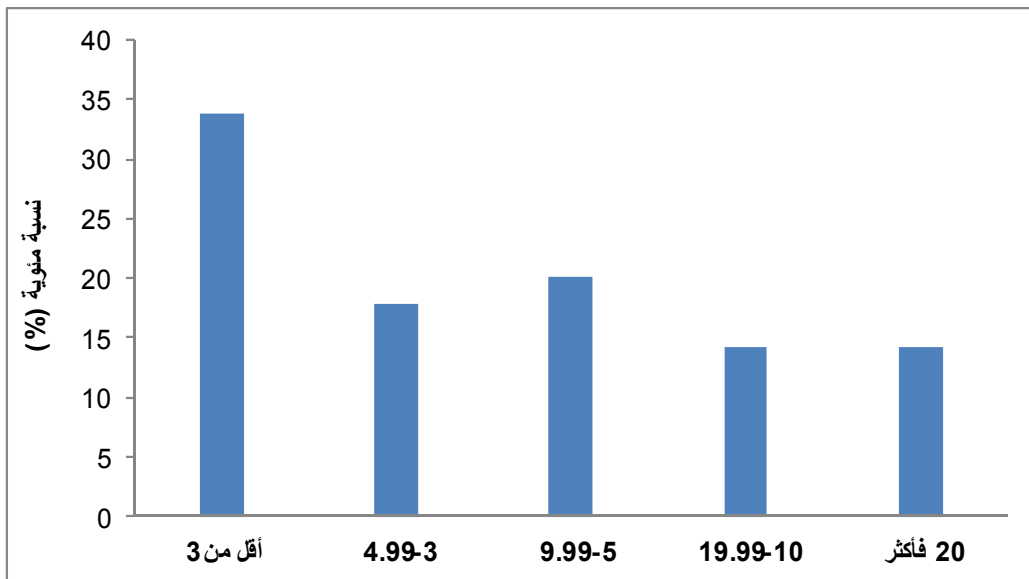
2010

:1



2010

:2



)	()		(
					(2)
			%91.6		1,101,693.5
		%8.4		101,030.01	
%55.4 :				%91.6	
			%21.8		%14.3
				12.4	
				13.8	
15.1					5.9
				11.3	13.6
	/	450	2010		
			.(2012)	4,279
			179		
			.(2012)	26
		4.5			
			3		5
			4		5
					6
					1
			.(2007) %20	
			%1		
					%.3

[100*(/)]

1

%2.1 %1.0

.%1.2

%2.3

%3.0

2010

:2

4.5	0.9	0.12	36.42	12.4	100	1,202,723.51	
5	1.0	0.14	39.26	13.8	91.6	1,101,693.50	
6	1.2	0.18	36.85	15.1	55.4	666,856.05	
5	3.0	0.41	45.80	13.6	14.3	172,429.53	
4	2.3	0.26	39.69	11.3	21.8	262,407.92	
3	2.1	0.13	16.41	5.9	8.4	101,030.01	

(2)

36.42

2

12.4

16.41

5.9

2.7

45.80

13.6

36.85)

(15.1

.(11.3

39.69)

(3)

%17

209,675.42

%17

207,395.97

%1

15,410.71

%8

%9

%13

%5

%6

%8

%5

%2

%3

%4

%1

49.4

5.3

12.4

12.4

(3)

36.42

8.53

1.6

152.44

2010

0.9	0.12	36.42	12.4	100	1,202,723.51	
6.0	0.30	34.47	15.8	17	207,395.97	
9.0	1.49	73.16	29.5	6	70,646.59	
5.1	0.34	29.55	13.1	8	98,243.89	
5.0	0.34	37.29	13.2	13	159,723.03	
6.7	0.50	33.88	16.9	6	76,257.34	
5.6	0.34	22.69	12.2	5	54,589.23	
5.0	0.25	24.72	11.5	9	113,445.18	
13.5	5.36	152.44	49.4	3	39,913.06	
4.0	0.43	19.35	9.5	2	19,071.29	
3.0	0.34	26.52	8.5	4	52,732.50	
4.0	0.33	43.49	12.4	17	209,675.42	
2.5	0.27	16.29	5.5	2	20,220.65	
2.5	0.56	26.81	6.8	1	15,410.71	
3.1	0.45	22.54	7.3	2	18,494.04	
3.0	0.12	8.53	5.3	2	29,186.91	
3.0	0.18	9.70	5.8	1	17,717.70	

3.2

(4)

12.4

1,202,722.5

10.17

957,156.9

72,078.1

3.17

3,451.3

2.1

495.8

5.53

68,137.0

2.7	28.3	()	
			3.4
		3.1	10.9
	3.7	20.8	6.6
5.08		173,487.5	
	4.7		24.2
		0.22	4,320.4
	0.39	8,485.2	
	11.68	160,427.0	()
3.6	0.8		
3.2			
		36.6	()

2010

			()	()		
0.9	0.12	36.42	12.4	1,202,722.5	97,069	
0.92	0.10	30.5	10.60	1,029,235.0	97,066	
0.91	0.09	28.3	10.17	957,156.9	94,128	
10.46	0.33	10.9	3.17	3,451.3	1,089	
3.39	0.19	20.8	5.53	68,137.0	12,315	
20.31	0.43	6.6	2.10	495.8	236	
2.58	0.13	24.2	5.08	173,487.5	34,169	
2.50	0.01	0.8	0.22	4,320.4	19,555	
5.50	0.02	3.2	0.39	8,485.2	21,606	
2.67	0.31	36.6	11.68	160,427.0	13,740	()
6.38	0.06	6.0	1.00	8,734.2	8,739	

(5)

127,256.8 ()

%25.3

957,156.9
%13.3

241,193.8

%56.7

542,345.4

(5)

28.12

7.6

12.17

37.54

6.4

13.54

:5

2010

			()	()		
3.318	0.252	28.12	7.609	94,398.3	12,406	
3.347	0.177	13.97	5.301	32,858.5	6,199	
2.890	0.206	26.08	7.132	114,147.8	16,006	
2.231	0.271	37.54	12.166	232,743.5	19,130	
8.540	0.653	22.64	7.645	9,189.3	1,202	
2.237	0.225	31.45	10.068	196,291.0	19,496	
0.755	0.048	13.54	6.353	506,052.4	79,658	
2.669	0.080	8.78	2.992	36,214.7	12,104	
21.559	0.511	2.71	2.372	66.4	28	
40.739	0.486	1.54	1.192	11.9	10	

1.3

(6)

%92

1,101,693.5

1,202,723.5

%8

%95

(20)

.(%92)

%5

%85-75

%25-15

%80

%4

%82

%4

%55

%13

0.05

.()

2

5.9

13.8

2010

:6

						()
(4) 100	53,353.14	(13) 25	13,402.58	(4) 75	39,950.54	3
(5) 100	62,165.50	(11) 18	11,429.60	(5) 82	50,735.90	4.99-3
(11) 100	130,738.40	(20) 15	20,178.70	(10) 85	110,559.70	9.99-5
(15) 100	184,337.31	(19) 11	19,624.87	(15) 89	164,712.43	19.99-10
(64) 100	772,129.15	(36) 5	36,394.25	(67) 95	735,734.93	20
(100) 100	1,202,723.50	(100) 8	101,030.00	(100) 92	1,101,693.50	

(7)

%92

%22

%15

%55

%8

%59

%22

%15

20

%5

3

%37

%25

%27

%11

%55

%59-37

%15

%15-11

%22

%27-20

%70-6

%8

%78

%84

%3

%81

%3

%78

%5

%13 %55

)

0.05

.(

15.1

2

13.6

5.9

11.3

2010

:7

								()
(13) 25	13,402.58	(5) 27	14,310.02	(3) 11	5,987.23	(3) 37	19,653.29	3
(11) 18	11,429.60	(6) 25	15,569.50	(5) 14	8,555.80	(4) 43	26,610.60	4.99 - 3
(20) 15	20,178.70	(11) 22	28,652.80	(11) 14	18,631.90	(9) 48	63,275.00	9.99 - 5
(19) 11	19,624.87	(14) 20	37,209.38	(15) 14	26,283.55	(15) 55	101,219.47	19.99-10
(36) 5	36,394.25	(64) 22	166,666.20	(66) 15	112,971.06	(68) 59	456,097.64	20
(100) 8	101,030.00	(100) 22	262,407.90	15(100)	172,429.54	(100) 55	666,856.00	

(8)

3

%77

883,028.6

%23

156,321.2

%10

%14

%58

%42

20

%10

%13

%77 :

3

%19

%69

(2007)

%12

%81

%4

%76

%6

%81

%5

0.05

13.0

10.8

12.4

2010

:8

						()
(5) 12	5,986.7	(6) 19	9,304.1	(4) 69	34,026.5	3
(5) 9	5,033.6	(6) 16	9,516.9	(5) 75	44,163.5	4.99-3
(9) 8	9,966.6	(12) 15	18,874.8	(11) 77	95,599.6	9.99-5
(13) 8	14,320.7	(14) 13	22,376.3	(17) 79	139,844.5	19.99-10
(68) 10	76,253.7	(62) 13	96,249.1	(64) 77	569,394.5	20
(100) 10	111,561.2	(100) 14	156,321.2	(100) 77	883,028.6	

3.3

(9)

/ /

1,101,837.6

92,146

(10)

%91

%80

%19

%1

%8

(10) (9) %5 %35

%79 10 %27
%79 %35 %27 %5

%6 %75 10
%6 %37 %25 %75

%1 %92 10
%1 %92 %14
%53

%2 (9) %88 10

%26 %2

%38

%88

%4 (9)
%85

10

%39

%4

%29

%85

:9

2010

										()
(5) 100	51,679.9	(4) 0.3	159.8	(2) 0.2	90.4	(1) 4	1,860.9	(6) 96	49,568.8	3
(5) 100	59,570.1	(3) 0.2	105.5	(2) 0.2	105.9	(2) 6	3,501.8	(6) 94	55,857.0	4.99-3
(11) 100	123,830.5	(8) 0.2	289.8	(7) 0.3	327.0	(5) 9	10,852.5	(13) 91	112,361.2	9.99-5
(16) 100	171,531.7	(10) 0.2	400.0	(10) 0.3	451.5	(10) 12	21,400.3	(17) 87	149,279.9	19.99-10
(63) 100	695,225.4	(75) 0.4	2,883.3	(78) 0.5	3,486.5	(82) 25	174,701.4	(58) 74	514,154.2	20
(100) 100	1,101,837.6	(100) 0.3	3,838.4	(100) 0.4	4,461.3	(100) 19	212,316.8	(100) 80	881,221.0	

:10

2010

										()
(35) 100	31,899	(39) 0.3	90	(26) 0.2	54	(14) 3	1,113	(37) 96	30,642	3
(18) 100	16,516	(13) 0.2	29	(14) 0.2	29	(12) 6	956	(18) 94	15,502	4.99-3
(20) 100	18,488	(19) 0.2	43	(23) 0.3	47	(21) 9	1,613	(20) 91	16,785	9.99-5
(14) 100	12,814	(14) 0.2	31	(16) 0.3	33	(20) 12	1,580	(13) 87	11,170	19.99-10
(13) 100	12,429	(15) 0.3	35	(22) 0.4	45	(33) 20	2,535	(12) 79	9,814	20
(100) 100	92,146	(100) 0.2	228	(100) 0.2	208	(100) 8	7,797	(100) 91	83,913	

4.3

(11)

:

1,199,983.4
 %71 851,131.6
 %3 38,685.2
 %26 310,166.6
 %70
 (20)
 %4 .(%71)
 .(%3)
 %26
 %79
 %4
 %79
 %5
 %89
 %2
 %81
 %4
 0.05
 20.4

11.9

13.2

:11

2010

								()
(4) 100	53,242.0	(4) 23	12,147.6	(2) 1	742.3	(5) 76	40,352.1	3
(5) 100	62,037.5	(5) 24	15,021.2	(3) 2	1,108.4	(5) 74	45,908.0	4.99-3
(11) 100	130,496.6	(10) 25	32,365.0	(7) 2	2,561.2	(11) 73	95,570.4	9.99-5
(15) 100	184,015.0	(15) 26	47,028.2	(12) 2	4,584.1	(16) 72	132,402.6	19.99-10
(64) 100	770,192.3	(66) 26	203,604.6	(77) 4	29,689.2	(63) 70	536,898.5	20
(100) 100	1,199,983.4	(100) 26	310,166.6	(100) 3	38,685.2	(100) 71	851,131.6	

5.3

(12)

1,188,046.2

718,568.3

%60

%40

469,478

%79

%4

%74

%6

%2

%89

0.05

20.2

10.1

:12

2010

						()
(4) 100	51413.42	(2) 18	9330.96	(6) 82	42082.46	3
(5) 100	60,787.22	(3) 21	12,866.60	(7) 79	47,920.62	4.99-3
(11) 100	128,624.82	(7) 25	31,708.59	(13) 75	96,916.23	9.99-5
(15) 100	182003.13	(12) 30	54135.56	(18) 70	127867.57	19.99-10
(64) 100	765217.63	(77) 47	361436.24	(56) 53	403781.39	20
(100) 100	1,188,046.56	(100) 40	469,477.95	(100) 60	718,568.27	

6.3

%50

(13)

()

%17

%25

%11

%19

%50

10

%29

%13

(9.99-5)

%16

(1.99-1)

%9

(2.99-2)

%11

(4.99-3)

%18

%30

%31

%19

%23

%28

%9

%45

%50

:13

2010

						()
10	16	6	5	9	3	
13	28	8	7	12	4.99-3	
16	33	11	10	15	9.99-5	
22	43	16	12	23	19.99-10	
36	52	31	25	38	20	
17	25	11	11	19		

(14)

415,650.6

255,067.8

%61

%11

46,897

%17

72,098.8

%10

41,587.1

%91

%1

%94

%1

%94

%1

%93

%1

%71

%6

0.05

%50

33.8

27.8

30.8

9.6

2010

										()
(1) 100	5,362.0	(6) 44	2,338.1	(1) 15	802.4	(1) 6	341.8	(1) 35	1,879.8	3
(2) 100	8,285.9	(8) 39	3,269.2	(2) 16	1,288.2	(1) 8	622.6	(1) 37	3,105.9	4.99-3
(5) 100	21,757.7	(16) 31	6,723.6	(4) 15	3,243.6	(4) 9	1,960.5	(4) 45	9,830.1	9.99-5
(10) 100	42,023.8	(21) 20	8,596.2	(9) 15	6,263.1	(7) 8	3,375.7	(9) 57	23,788.8	19.99-10
(81) 100	338,221.2	(50) 6	20,659.9	(84) 18	60,501.5	(87) 12	40,596.5	(85) 64	216,463.3	20
(100) 100	415,650.6	(100) 10	41,587.1	(100) 17	72,098.8	(100) 11	46,897.0	(100) 61	255,067.8	

1.4

(15)

()

%70

4

%17

%12

.%1

%87

%64

%15

%3

%20

%9

()

.%1

%75

%75

%6

%92

%1

%86

%2

()

4

%99

0.05

) 146.2
17.9 26.0 10.6 .(

:15

2010

								()
(0) 0	8.3	(2) 9	5,013.5	(1) 3	1,658.4	(6) 87	46,668.0	3
(0) 0	19.3	(3) 11	6,610.8	(2) 5	2,971.6	(6) 85	52,555.7	4.99-3
(1) 0	72.9	(8) 12	15,985.2	(5) 5	7,166.5	(13) 82	107,508.8	9.99-5
(1) 0	83.5	(12) 14	25,433.0	(10) 8	14,494.2	(17) 78	144,310.6	19.99-10
(98) 1	9,025.2	(74) 20	151,936.6	(82) 15	116,702.3	(58) 64	494,465.0	20
(100) 1	9,209.2	(100) 17	204,979.1	(100) 12	142,993.0	(100) 70	845,508.1	

2.4

(16)

%25

%75

20

%40

%31

(9.99-5)

%25

(19.99-10)

%18

(4.99-3)

%21

%40

%17

%26

%14

:16

2010

										()
18	5,864	31	2,634	11	965	9	330	16	1,935	3
21	3,581	43	1,334	14	605	9	213	20	1,429	4.99-3
25	4,885	50	1,514	18	797	12	324	24	2,250	9.99-5
31	4,195	54	818	26	728	18	356	31	2,293	19.99-10
40	5,470	53	448	36	952	31	608	42	3,462	20
25	23,995	40	6,748	17	4,047	14	1,831	26	11,369	

(17)

%38

%62

20

%45

%31

(9.99-5)

%25

(19.99-10)

%18

(4.99-3)

%21

%41

%48

.%30

%32

:17

2010

										()
18	9,776.56	32.7	4,377.25	11	1,592.60	9	549.01	17	3,257.70	3
21	12,981.78	43.0	4,878.62	14	2,181.52	9	747.79	19	5,173.85	4.99-3
25	33,065.16	50.0	10,093.85	19	5,343.03	12	2,232.26	24	15,396.02	9.99-5
31	56,794.84	54.2	10,627.50	26	9,854.00	18	4,794.97	31	31,518.37	19.99-10
45	34,7478.07	49.8	18,133.06	40	65,888.00	38	43,103.34	48	220,353.67	20
38	460,096.47	48	48,110.28	32	84,859.15	30	51,427.37	41	275,699.61	

3.4

(18)

1,193,514.3

%4
(45-31)

44,773.2

30

%26

310,611.1

443,171.4

(60-46)

%37

%33

394,958.7

%3

(20)

%24

.(%4)

.(%26)

(45-31)

.(%37) %36
 (60-46) %31
 .(%33)
 %79
 %4
 %74
 %8
 %74 (45-31)
 %7
 %77 (60-46)
 %5
 %86
 %2
 0.05
 60
 17.0
 11.7 (60-46)
 10.0 (45-31)
 9.3 30

2010

										()
		60		60-46		45-31		30		
(4) 100	53,344.89	(2) 17	9,229.92	(5) 38	20,413.32	(7) 38	20,309.21	(8) 6	3,392.44	3
(5) 100	62,146.14	(3) 22	13,478.80	(6) 40	25,132.44	(7) 33	20,547.10	(7) 5	2,987.80	4.99-3
(11) 100	130,665.49	(8) 26	33,467.47	(12) 41	53,458.21	(12) 29	38,416.70	(12) 4	5,323.11	9.99-5
(15) 100	184,253.84	(15) 31	57,310.13	(16) 39	72,516.71	(15) 26	47,847.92	15) 4	6,579.08	19.99-10
(64) 100	763,103.91	(71) 31	28,1472.38	(61) 36	271,650.68	(59) 24	183,490.10	(59) 3	26,490.75	20
(100) 100	1,193,514.33	(100) 33	394,958.70	(100) 37	443,171.36	(100) 26	310,611.03	(100) 4	44,773.18	

4.4

(19)

()

%8

%10

%6

%11

%7 %6

20

%8 %9

%5

2010

					()
9	7	6	11	11	3
8	6	6	10	10	4.99-3
8	5	5	10	10	9.99-5
8	4	6	9	10	19.99-10
8	5	5	8	9	20
8	6	6	10	10	

(20)

90,922.1
 %62
 56,505.2
 14,094
 14,328
 %16
 %7
 %16
 5,995
 %77
 %5
 %80
 %4
 %76
 %4
 %76
 %6
 %57

%16

:20

2010

										()
(5) 100	14,621.27	(16) 21	980.98	(6) 20	910.38	(4) 14	624.70	(4) 46	12,105.21	3
(6) 100	5,083.39	(11) 13	670.40	(7) 18	931.49	(6) 17	867.20	(5) 51	2,614.30	4.99-3
(12) 100	10,948.97	(16) 9	957.02	(11) 14	1,550.10	(13) 17	1,872.84	(12) 60	6,569.01	9.99-5
(17) 100	15,404.78	(13) 5	762.06	(14) 13	2,076.99	(17) 16	2,428.21	(18) 66	10,137.52	19.99-10
(60) 100	54,863.69	(44) 5	2,624.51	(62) 16	8,859.00	(59) 15	8,301.07	(62) 64	35,079.11	20
(100) 100	100,922.10	(100) 7	5,994.97	(100) 16	14,327.96	(100) 16	14,094.02	(100) 62	66,505.15	

0.05

5.6

12.8

11.3

10.6

5.4

(21)

290,231.8

1,192,617.6

%24

)

636,188.1

232,276.6

%53

(

%19

(

)

33,921.1

%3 (:)

%79

%4

%83

%3

%78

%5

%80

%4

%83

%4

()

0.05

14.5

11.4

12.5

2010

										()
(4) 100	53,310.1	(4) 2	1,310.5	(4) 19	10,339.6	(5) 60	32,035.5	(3) 18	9,624.5	3
(5) 100	62,115.3	(4) 2	1,365.1	(5) 19	11,504.8	(6) 59	36,879.7	(4) 20	12,365.8	4.99-3
(11) 100	130,594.0	(9) 2	3,124.7	(11) 19	25,308.7	(12) 57	75,071.0	(9) 21	27,089.6	9.99-5
(15) 100	184,139.8	(15) 3	5,018.1	(16) 20	36,016.3	(16) 55	100,514.0	(15) 23	42,591.4	19.99-10
(64) 100	762,458.4	(68) 3	23,102.7	(64) 20	149,107.2	(62) 51	391,687.9	(68) 26	198,560.6	20
(100) 100	1,192,617.6	(100) 3	33,921.1	(100) 19	232,276.6	(100) 53	636,188.1	(100) 24	290,231.9	

6.4

(22)

) 1,193,514.3

. %2 23,647.3 (

233,163.9 (3-2)

. %19

. %21 244,935.6 (5-4)

543,518.9 (9-6)

. %46

. %13 158,248.7 10

%2

(20)

%20

(3-2) (20)

%21 .(%19)

(20)

%43 (5-4)

(20)

%14 .(%46) (9-6)

(10)

.(%13) 10

%79

%4

%77

%4

%83

(3-2)

%3

%80

(5-4)

%4

%77

(9-6)

%5

%81

10

%4

(9-6)

0.05

(3-2)

10

14.8

13.4

)

12.3

(5-4)

11.3

(9-6)

11.1 (

2010

												()
		10	9-6	5-4	3-2							
(4) 100	53,344.9	(4) 12	6,565.2	(5) 52	27,873.7	(4) 20	10,899.9	93) 13	6,994.4	(4) 2	1,011.7	3
(5) 100	62,146.2	(5) 13	7,936.7	(6) 50	31,165.5	(5) 20	12,674.9	(4) 15	9,047.3	(6) 2	1,321.8	4.99-3
(11) 100	130,665.5	(10) 12	15,321.0	(12) 49	64,636.0	(11) 21	26,855.1	(9) 16	20,965.2	(12) 2	2,888.2	9.99-5
(15) 100	184,253.8	(13) 11	20,523.7	(16) 48	88,494.0	(15) 21	37,929.2	(15) 18	33,421.9	(16) 2	3,885.1	19.99-10
(64) 100	763,103.9	(68) 14	107,902.1	(61) 43	331,349.7	(64) 21	156,576.5	(68) 20	152,735.1	(61) 2	14,540.5	20
(100)100	1,193,514.3	(100) 13	158,248.7	(100) 46	543,518.9	(100) 21	244,935.6	(100) 19	223,163.9	(100) 2	23,647.3	

(Barrow, 2001)

%20

%40

(Bellu' and Liberati, 2006)

$$G = \frac{\frac{1}{2} - \frac{1}{2} \sum_i [(q_i + q_{i-1})(p_i - p_{i-1})]}{\frac{1}{2}} = 1 - \sum_i [(q_i + q_{i-1})(p_i - p_{i-1})]$$

:q_i

:P_i

1.5

(3)

%2

%20

%4

(%20)

%6

()

%40

%20

%72

0.60

(2007)

1975

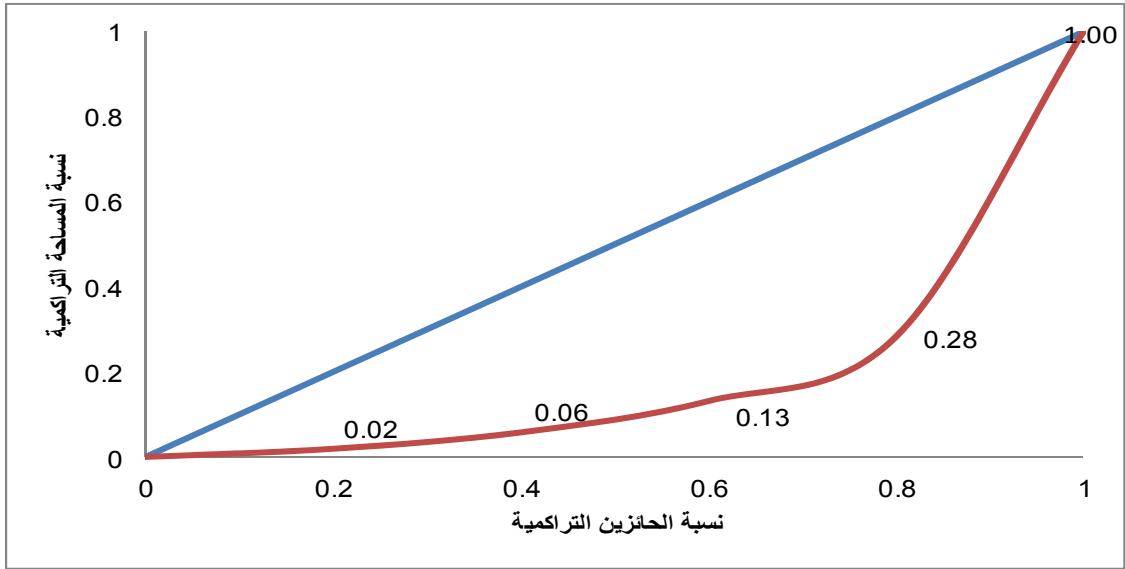
0.67

1997

0.72

1983

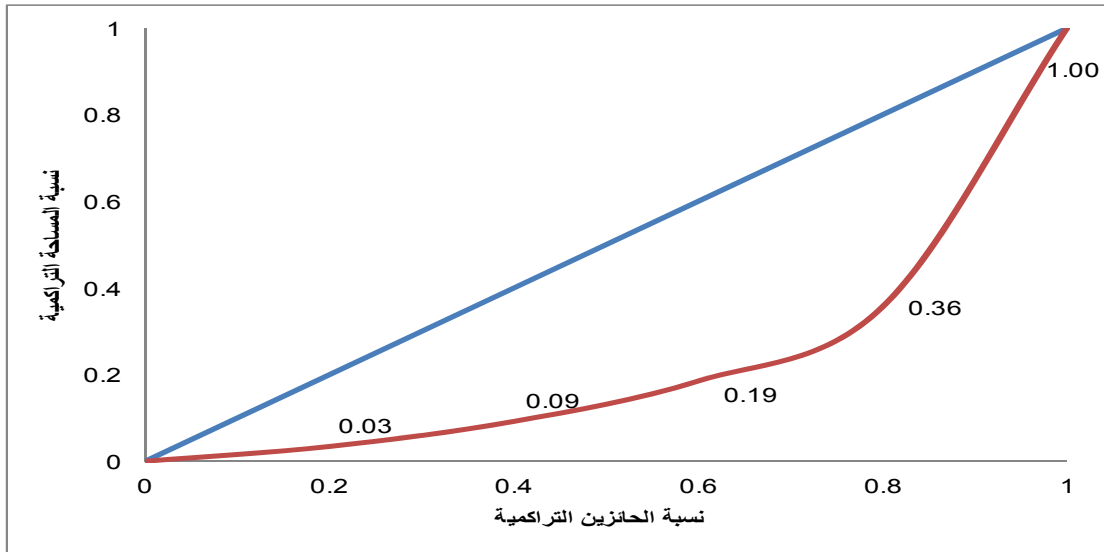
2010 () :4



(5)

%20)) %40 %3 %20 ()
%64 %9 %20 ()
0.53
.0.60

2010 () :5

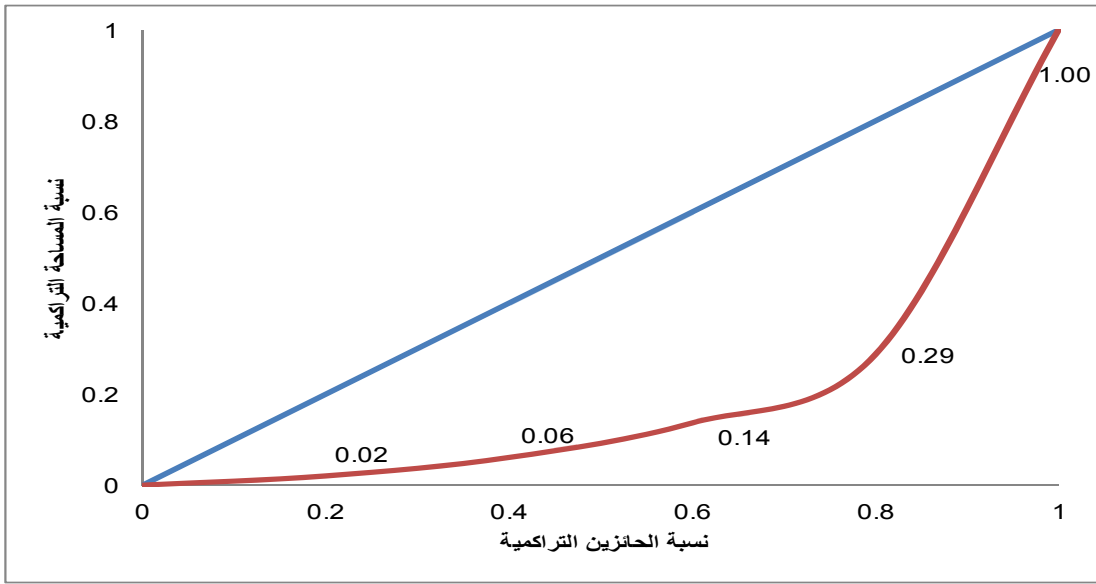


(6)

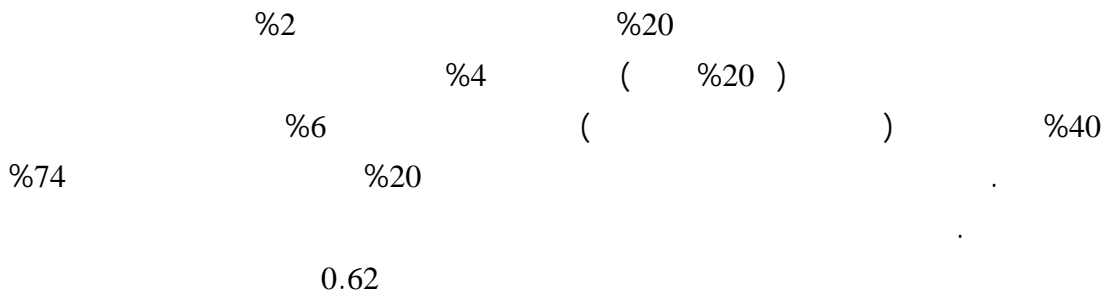
%20 (%20)
 %40 %4 (%20)
 %70 %6 (%20)
 %20
 0.59
)
 ()
 .0.60
 .0.53

2010

:7

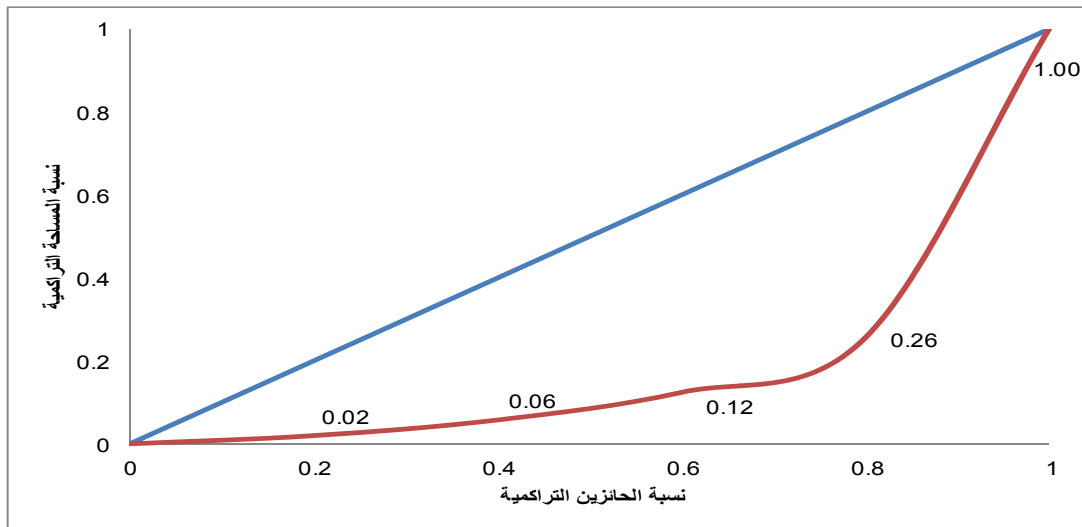


(8)



2010

:8



				2.5
			(23)	
		%8	%40	0.60
			%69	%20
0.49			0.66	
	%11	%40	%58	%20
	%3	%40	%77	%20
	(0.60)			
(0.53)		(0.58)	(0.56)	(0.53)
(0.57)	(0.56)	(0.55)		(0.60)
	(0.59)	(0.58)		

(0.66)

(0.63)

(0.65)

:23

2010

	%20	%40		%20	%20	
0.60	72	6		4	2	
0.58	69	6		4	2	
0.65	76	4		3	1	
0.58	68	6		4	2	
0.59	70	6		4	2	
0.59	70	6		4	2	
0.55	65	8		5	3	
0.56	66	8		5	3	
0.66	77	3		2	1	
0.57	68	7		5	2	
0.58	70	6		4	2	
0.63	76	6		4	2	
0.53	65	10		6	4	
0.58	71	8		5	3	
0.56	68	8		5	3	
0.49	58	11		7	4	
0.53	64	9		6	3	

(Parikh and Nagarajan,

(Austin et al., 2012)

2004)

.(Ruttan, 1980)

1.6

(24)

24,395

%25

%34

405,412.1

%22

17,853

%32 356,127.2
%38 6,542
%49 49,284.9

:24

2010

						()	
11,302.3	6,955	4,121.3	2,505	7,181.0	4,450	القيمة	3
21	21	31	29	18	18	النسبة	
14,211.7	3,883	4,694.9	1,280	9,516.8	2,603	القيمة	4.99-3
23	23	41	41	19	18	النسبة	
33,892.5	5,031	9,948.0	1,495	23,944.5	3,536	القيمة	9.99-5
26	26	49	49	22	22	النسبة	
52,748.7	3,898	10,346.2	792	42,402.5	3,106	القيمة	19.99-10
29	28	53	52	26	25	النسبة	
293,256.9	4,628	20,174.5	470	273,082.5	4,158	القيمة	20
38	34	55	55	37	32	النسبة	
405,412.1	24,395	49,284.9	6,542	356,127.2	17,853	القيمة	
34	25	49	38	32	22	النسبة	

%18
%19 (4.99-3)
%26 (9.99-5) %22
%37 (19.99-10)

.%32

%49

%49

20

%32

)

(25)

(

:25

2010

										()
11,302.3	6,955	4,121.3	2,505	3,154.1	1,979	768.1	459	3,258.8	2,012	3
21	21	31	29	22	22	13	4	17	17	
14,211.7	3,883	4,694.9	1,280	3,629.5	999	1,137.4	314	4,749.8	1,290	4.99-3
23	23	41	41	23	23	13	13	18	18	
33,892.5	5,031	9,948.0	1,495	7,988.7	1,195	2,524.9	368	13,430.9	1,973	9.99-5
26	26	49	49	28	28	14	13	21	21	
52,748.7	3,898	10,346.2	792	11,018.9	820	4,848.1	358	26,535.6	1,928	19.99-10
29	28	52	52	30	29	18	18	26	26	
293,256.9	4,628	20,174.5	470	61,951.5	898	41,899.5	565	169,231.5	2,695	20
38	34	55	55	37	34	37	29	37	33	
405,412.1	24,395	49,284.9	6,542	87,742.7	5,891	51,178.0	2,064	217,206.6	9,898	
34	25	49	38	33	25	30	16	33	22	

%17

20

%18

(4.99-3)

.%37

%30
 %49
 %25
 %22
 %33
 (26)
 %33
 %80
 %12
 %23
 %21
 (20)
 %38
 (4.99-3)
 %82
 (4.99-3)
 %65
 %44
 (20)

2010

	20	19.99-10	9.99-5	4.99-3	3	
34	38	26	26	23	21	
40	46	32	24	18	18	
57	59	54	44	44	39	
21	22	21	21	21	20	
24	29	19	14	11	9	
33	33	31	30	28	31	
16	17	16	15	11	10	
12	12	14	10	11	11	
80	82	71	53	65	44	
28	34	24	21	16	15	
25	28	23	24	17	18	
36	39	32	29	25	24	
43	51	46	44	37	26	
29	34	24	26	30	21	
53	61	55	48	39	34	
56	68	63	56	44	34	
57	65	59	57	50	36	

(27)

%69

%82

%24

%21

%50

%45

%71

%15 %38

%85

20

%52

%29

%74

.(20)

%85

(4.99-3)

%76

%38

.(20)

%52

(4.99-3)

%41

%15

%29

(4.99-3)

%17

.(20)

:27

2010

								()
10,786.5	6,955	5,938.8	4,568	1,238.0	1,074	4,169.5	3,022	3
21	21	15	17	38	40	74	68	
13,446.1	3,883	6,969.1	2,772	2,260.3	1,080	4,422.9	1,703	4.99-3
23	23	17	19	41	41	76	68	
31,712.4	5,031	15,802.8	3,779	6,291.8	1,902	9,025.8	2,355	9.99-5
26	26	19	22	44	44	77	68	
48,868.9	3,898	22,433.8	3,047	11,413.3	1,899	11,701.9	1,766	19.99-10
29	28	22	25	46	46	77	68	
259,394.2	4,628	80,746.1	3,579	77,558.2	2,787	64,712.5	2,223	20
41	34	29	30	52	49	85	73	
364,208.1	24,395	131,890.6	17,745	98,761.6	8,742	94,032.6	11,069	
35	25	24	21	50	45	82	69	

2.6

1.2.6

(28)

33,746

472,284.7

%26

%35

%74

%81

:28

2010

						()
17,801.9	11,053	9,334.4	5,832	8,467.5	5,221	3
33	34	70	69	21	21	
20,743.6	5,670	8,669.2	2,363	12,074.4	3,307	4.99-3
33	33	76	75	24	23	
45,573.4	6,784	16,410.8	2,464	29,162.6	4,320	9.99-5
35	35	81	81	26	26	
65,114.9	4,849	16,208.1	1,247	48,906.8	3,602	19.99-10
35	35	83	82	30	29	
323,051.0	5,390	31,013.5	707	292,037.5	4,683	20
42	39	85	83	40	36	
472,284.8	33,746	81,636.0	12,613	390,648.8	21,133	
39	35	81	74	35	26	

(4.99-3)

%35

%33
(9.99-5)

(19.99-10)

.%42

%81

.%35

%81

10

.%35

()

(29)

%24

.%47

20

%27

(4.99-3)

%42

%23

%28

%81

%23

%16

%23

%28

:29

2010

										()	
17,801.9	11,053	9,334.4	5,832	3,051.1	1,945	773.3	474	4,643.1	2,802		3
33	34	70	69	21	22	13	4	24	24		
20,743.6	5,670	8,669.2	2,363	3,583.8	986	1,185.0	333	7,305.6	1,988		4.99-3
33	33	76	75	23	23	14	14	27	27		
45,573.4	6,784	16,410.8	2,464	7,159.3	1,068	2,881.9	424	19,121.4	2,828		9.99-5
35	35	81	81	25	25	15	15	30	30		
65,114.8	4,849	16,208.1	1,247	9,789.6	737	4,294.5	320	34,822.6	2,545		19.99-10
35	35	82	82	26	26	16	16	34	34		
323,050.9	5,390	31,013.5	707	36,594.3	631	39,229.2	534	216,213.9	3,518		20
42	39	85	83	22	24	35	27	47	43		
472,284.6	33,746	81,636.0	12,613	60,178.1	5,367	48,363.9	2,085	282,106.6	13,681		
39	35	81	74	23	23	28	16	42	31		

(30)

%41

%11

%89

%33

%42

(9.99-5)

%35

(4.99-3)

.(20)

:30

2010

	20	19.99-10	9.99-5	4.99-3	3
39	42	35	35	33	33
50	57	39	31	25	22
59	62	48	40	34	33
40	42	39	37	37	33
32	38	25	21	17	14
37	37	35	36	42	45
32	34	30	32	29	21
11	10	12	12	12	10
79	80	71	63	66	56
25	29	22	22	15	17
21	23	20	19	17	15
23	22	28	27	25	24
72	77	73	72	72	62
80	83	77	81	76	71
89	94	89	88	79	78
83	89	88	84	78	69
79	83	80	79	74	73

%80

(4.99-3)

%66

%56

.(20)

(31)

%70

%88

(32)

48,276
 679,962
 35,665
 598,790.9
 12,611
 81,171.1

%50
 %57
 %45
 %54
 %74
 %80

:32

2010

						()
24,441.5	14,971	9,387.1	5,875	15,054.4	9,096	3
46	46	70	69	38	37	
29,422.6	8,061	8,636.2	2,352	20,786.4	5,709	4.99-3
47	47	76	75	41	41	
66,598.0	9,895	16,265.0	2,440	50,333.0	7,455	9.99-5
51	51	81	80	46	45	
98,936.1	7,336	16,095.3	1,240	82,840.8	6,096	19.99-10
54	53	82	82	50	50	
460,563.8	8,013	30,787.5	704	429,776.3	7,309	20
60	58	85	83	58	57	
679,962.0	48,276	81,171.1	12,611	598,790.9	35,665	
57	50	80	74	54	45	

%46

%47 (4.99-3)

(9.99-5)

%60

(19.99-10)

%54

%51

%80

.%54

%85

20

%58

()

(33)

%40

20

%45

(4.99-3)

.%66

%62

%47

%37

%80

%46

%22

%47

%37

2010

										()
24,441.5	14,971	9,387.1	5,875	6,050.7	3,768	1,187.4	712	7,816.3	4,616	3
46	46	70	69	42	42	20	6	40	39	
29,422.6	8,061	8,636.2	2,352	7,109.4	1,963	1,587.0	439	12,090.0	3,307	4.99-3
47	47	76	75	46	45	19	18	45	45	
66,598.0	9,895	16,265.0	2,440	14,336.6	2,142	3,721.1	549	32,275.3	4,764	9.99-5
51	51	81	80	50	49	20	20	51	51	
98,936.1	7,336	16,095.3	1,240	19,612.3	1,472	6,112.6	451	57,115.9	4,173	19.99-10
54	53	82	82	53	52	23	23	56	56	
460,563.9	8,013	30,787.5	704	76,660.2	1,352	51,260.1	698	301,856.1	5,259	20
60	58	85	83	46	51	45	35	66	64	
679,962.1	48,276	81,171.1	12,611	123,769.2	10,697	63,868.2	2,849	411,153.6	22,119	
57	50	80	74	47	46	37	22	62	50	

(34)

%57

%94

%17

%47

%46

.(20)

%60

(4.99-3)

2010

	20	19.99-10	9.99-5	4.99-3	3	
57	60	51	51	47	46	
67	73	59	51	42	37	
73	76	65	59	52	50	
69	72	68	65	61	51	
46	51	41	36	32	27	
67	67	70	66	61	66	
51	52	52	50	47	41	
17	18	18	15	15	16	
94	94	89	90	80	65	
37	44	31	31	24	23	
47	50	51	45	39	35	
47	45	53	52	48	45	
74	77	74	74	75	64	
81	83	80	83	81	74	
89	92	91	89	81	80	
79	87	82	79	72	67	
80	83	82	80	74	73	

%94

(4.99-3)

%80

%65

.(20)

(35)

%82

%93

%65

%58

%55

%49

%88

%45 %47

%95 20

%61 %67

%88

-5) %91

%47 .(20) %95 (9.99

%49

.(20) %67 (4.99-3)

%45

.(20) %61 (4.99-3) %46

:35

2010

								()
23,374.1	14,970	17,179.6	12,271	1,504.3	1,262	4,922.3	3,544	3
46	46	45	45	47	46	88	80	
27,860.7	8,061	19,178.1	6,817	2,671.0	1,323	5,126.8	2,002	4.99-3
47	47	46	46	49	50	88	80	
62,174.7	9,895	39,954.9	8,407	8,156.1	2,505	10,585.6	2,774	9.99-5
51	51	49	49	57	58	91	81	
90,819.0	7,336	54,189.7	6,339	14,956.7	2,536	14,066.6	2,136	19.99-10
54	53	52	52	61	62	92	82	
397,415.1	8,013	169,000.4	6,811	99,663.2	3,740	71,870.8	2,635	20
63	58	61	58	67	66	95	86	
601,643.6	48,275	299,502.7	40,645	126,951.3	11,366	106,572.1	13,091	
58	50	55	49	65	58	93	82	

3.6

(36)

58,702

%79
 .%74
 %85 20
 %80
) (37)
 (
 %47
 20 %58 (4.99-3)
 .%85
 %79
 %47 %78
 %79
 %59
 %78 %30
 %47

2010

										()
26,764.4	16,031	7,832.6	4,738	6,661.9	4,078	1,367.7	797	10,902.2	6,418	3
50	49	58	56	47	45	23	7	55	55	
36,625.1	10,058	8,517.0	2,316	8,977.9	2,493	2,302.8	632	16,827.4	4,617	4.99-3
59	58	75	74	58	57	27	26	63	63	
84,678.3	12,577	16,308.6	2,456	19,217.9	2,888	5,440.8	801	43,711.0	6,432	9.99-5
65	65	81	81	67	67	29	29	69	69	
128,193.0	9,517	16,395.9	1,263	27,351.7	2,062	9,087.4	676	75,358.0	5,516	19.99-10
70	69	83	83	74	73	35	35	74	74	
616,936.2	10,519	31,016.9	721	141,555.1	2,157	63,251.0	946	381,113.2	6,695	20
80	77	85	85	85	81	56	48	84	81	
893,197.0	58,702	80,071.0	11,494	203,764.5	13,678	81,449.7	3,852	527,911.8	29,678	
74	60	79	67	78	59	47	30	79	67	

(38)

%74

%91

%22

%59

%50

.(20)

%80

(4.99-3)

20)

%92

(4.99-3)

%59

%33

.(

:38

2010

	20	19.99-10	9.99-5	4.99-3	3	
74	80	65	65	59	50	
96	98	95	94	89	83	
97	97	95	94	91	79	
64	69	59	54	47	40	
79	84	78	72	62	52	
78	81	72	65	66	57	
22	25	18	17	12	11	
34	38	32	27	25	23	
91	92	80	72	59	33	
36	42	31	30	32	21	
56	64	55	48	40	32	
83	89	79	74	64	53	
63	71	64	66	61	41	
79	86	79	77	77	59	
83	89	91	82	72	58	
86	91	92	89	82	69	
82	90	84	81	78	63	

(39)

%94

%81

%94

%87

%59

%68

%79

%48 %83

%96 20

%95

%76

%79

%89

.(20)

%96 (4.99-3)

%83

.(20)

%95 (4.99-3)

%89

%48

.(20)

%76 (4.99-3)

%56

:39

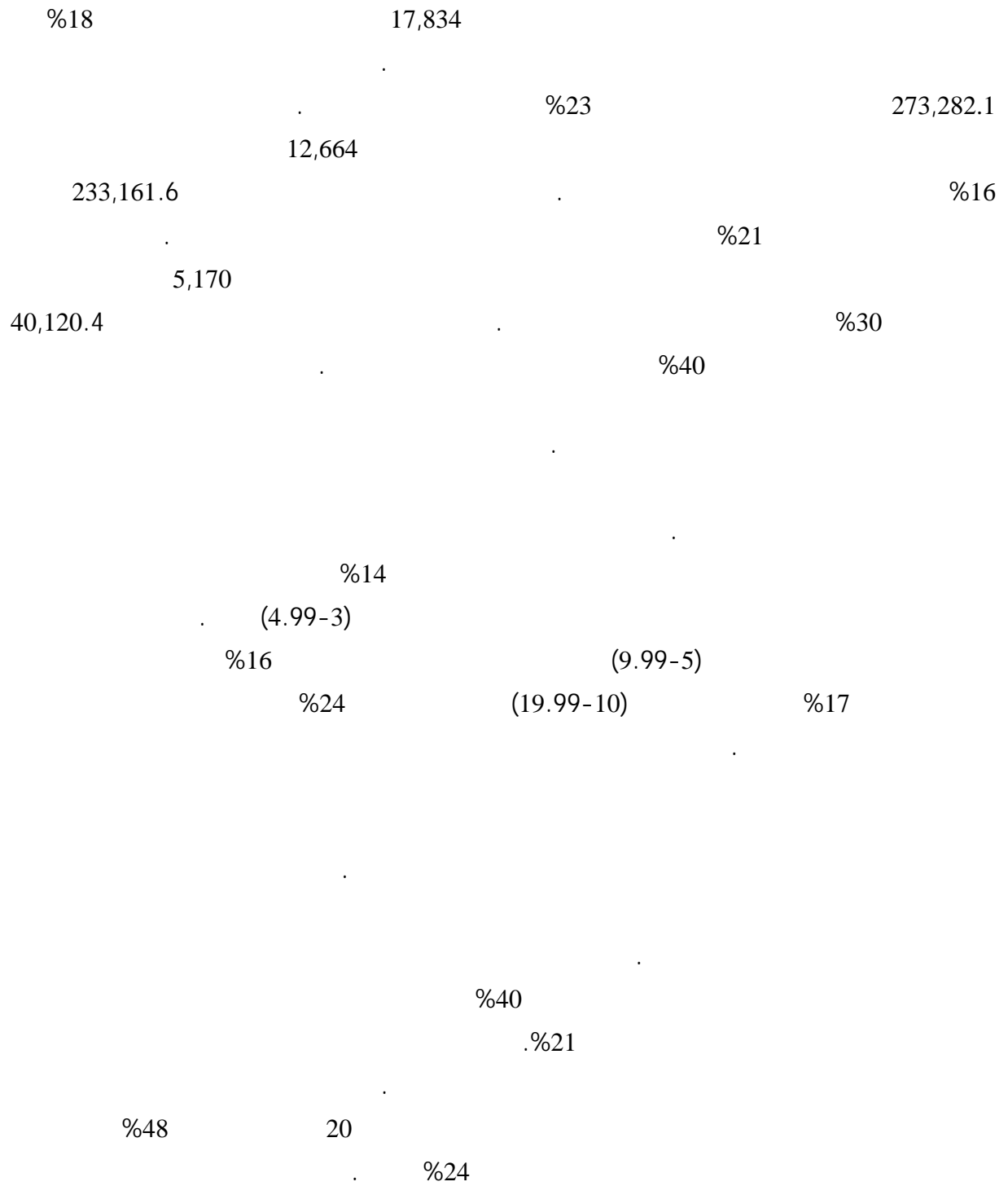
2010

								()
25,700.9	16,031	18,585.3	12,893	2,689.7	2,140	4,432.2	3,070	3
50	49	48	47	83	79	79	70	
34,847.5	10,058	23,381.3	8,343	4,880.0	2,245	5,156.7	2,010	4.99-3
59	58	56	56	89	85	89	80	
79,146.7	12,577	50,216.7	10,628	12,916.1	3,784	10,791.0	2,882	9.99-5
65	65	61	62	90	87	92	84	
117,524.8	9,517	68,614.2	8,112	22,798.5	3,643	14,373.2	2,240	19.99-10
70	69	66	67	93	89	94	86	
520,697.8	10,519	210,087.8	8,749	141,521.9	5,231	72,428.3	2,735	20
82	77	76	74	95	92	96	90	
777,917.7	58,702	370,885.3	48,725	184,806.2	17,043	107,181.4	12,937	
76	60	68	59	94	87	94	81	

4.6

(2007)

(40)



2010

						()
8,865.2	5,427	3,240.5	1,978	5,624.7	3,449	3
17	17	24	23	14	14	
10,909.7	2,976	3,803.2	1,036	7,106.5	1,940	4.99-3
18	17	33	33	14	14	
24,904.6	3,703	7,526.1	1,136	17,378.5	2,567	9.99-5
19	19	37	37	16	16	
36,301.0	2,696	8,198.0	632	28,103.0	2,064	19.99-10
20	20	42	42	17	17	
192,301.6	3,032	17,352.6	388	174,949.0	2,644	20
25	22	48	46	24	21	
273,282.1	17,834	40,120.4	5,170	233,161.7	12,664	
23	18	40	30	21	16	

()

(41)

%9

%29

20

%11

(9.99-5)

%23

%18

%22

%40

%15

%12

%18

%23

:41

2010

										()
8,865.3	5,427	3,240.5	1,978	1,910.4	1,198	556.1	332	3,158.3	1,919	3
17	17	24	23	13	13	9	3	16	16	
10,909.6	2,976	3,803.2	1,036	2,152.9	591	737.3	205	4,216.2	1,144	4.99-3
18	17	33	33	14	14	9	9	16	16	
24,904.6	3,703	7,526.1	1,136	4,516.7	677	1,977.8	287	10,884.0	1,603	9.99-5
19	19	37	37	16	16	11	10	17	17	
36,301.0	2,696	8,198.0	632	6,277.3	471	3,060.2	231	18,765.5	1,362	19.99-10
20	20	42	42	17	17	12	12	19	18	
192,301.6	3,032	17,352.6	388	32,302.5	496	33,234.3	407	109,412.2	1,741	20
25	22	48	46	19	19	29	21	24	21	
273,282.1	17,834	40,120.4	5,170	47,159.8	3,433	39,565.7	1,462	146,436.2	7,769	
23	18	40	30	18	15	23	12	22	18	

(42)

%23

%69

%3

%19 %17
 .(20) %25 (9.99-5)

20) %70 (19.99-10) %51 %47
 .(

:42

2010

	20	19.99-10	9.99-5	4.99-3	3	
23	25	19	19	18	17	
19	21	15	12	9	9	
33	34	29	26	27	27	
20	20	18	20	18	18	
38	42	33	30	28	27	
3	3	4	4	5	5	
4	4	3	5	3	2	
10	10	10	10	9	9	
69	70	51	50	47	47	
4	5	3	4	2	2	
18	21	16	15	14	13	
18	19	17	16	14	13	
45	49	50	45	44	29	
20	24	21	18	18	10	
48	53	53	43	38	33	
36	51	36	33	27	22	
49	63	47	45	38	27	

(43)

%40

%58

%29

%24

%18

%17

%46

%15 %18

%62

20

%20 %30

:43

2010

								()
8,473.6	5,427	5,806.3	4,057	594.7	526	2,559.0	1,657	3
17	17	15	15	18	19	46	38	
10,356.9	2,976	6,277.7	2,275	1,123.6	552	2,930.5	1,027	4.99-3
18	17	15	15	20	21	51	41	
23,250.0	3,703	13,557.9	2,925	3,399.2	1,054	5,738.0	1,313	9.99-5
19	19	17	17	24	24	49	38	
33,436.4	2,696	17,837.4	2,177	6,007.6	1,026	7,560.9	1,017	19.99-10
20	20	17	18	24	25	50	39	
167,241.2	3,032	54,635.1	2,362	45,270.8	1,595	47,021.6	1,341	20
26	22	20	20	30	28	62	44	
242,758.1	17,834	98,114.4	13,796	56,395.9	4,753	65,810.0	6,355	
24	18	18	17	29	24	58	40	

%46

-3)

%51

%18

.(20)

%62

(4.99

%20

.(20)

%30

(4.99-3)

%15

20)

%20

(4.99-3)

%15

.(

(Ruttan, 1980)

.

(2010)

%31

%42

%15

%12

(2009) /

()

2.7

:

%17

()

()

()

:

-

-

-

-

4

5

6

3

%40

%2 %1 %1

:

•

•

•

•

•

:

)

-

.(

.(

)

-

•

: (2007) .
 - - (2011)
 (2012)
http://pcbs.gov.ps/Portals/Rainbow/Documents/land_use_2010_t3_e.htm 2010
 (2012)
 2009/2010
http://pcbs.gov.ps/Portals/Rainbow/Documents/land_use_2010_t3_e.htm
 2007 " : " (2007) .
 " : " (2007) .
 2007
 " : " (2009) .
 2007 " " (2007) .
 " (2010) /
 "

- Austin, O., et al., (2012), "Exploring the Link between Land Fragmentation and Agricultural Productivity", **International Journal of Agriculture and Forestry**, 291): 30-34
- Barrow, M., (2001), **Statistics for Economics, Accounting, and Business Studies**, Third Edition, N.Y., Prentice Hall
- Bellu', L., Liberati, (2006), "The Inequality Analysis: The Gini Index", EASTPoL, Module 040, FAO Publication
- Bizamana, C., et al., (2004), "Farm Size, Land Fragmentation, and Economic Efficiency in Southern Rwanda", **Agrekon**, Vol 43, No 2 (June 2004),
- Groeber, D., et al., (2011), **Business Statistics: A Decision Making Approach**", Eighth Edition, N.Y., Pearson
- Parikh, K. and Nagarajan H., (2004), "How Important is Land Consolidation? Land Fragmentation and Implication for Productivity: Case Study of Village Nelpathur in Tamil Nadu", Department of Economic Analysis and Research, **National Bank for Agriculture and Rural Development**
- Ruttan, V., (1980), "Agricultural Research and the Future of American Agriculture", Department of Agricultural Economics and Applied Research, **University of Minnesota**, Staff Paper, July, 1980

