

2011

2012 /



.2012 - 1433 ©

.2011

.2012

. - **1647** . .

(970/972) 2 2982700 :

(970/972) 2 2982710 :

1800300300 :

diwan@pcbs.gov.ps :

<http://www.pcbs.gov.ps> :



Source: Palestinian Central Bureau of Statistics

2011

(PNA)

2012 (CFG)

.(SDC)

(CFG)

•

•

•

•

•

•

•

.<http://www.pcbs.gov.ps>

(-)

17	:
17	1.1
23	2.1
28	3.1
33	:
43	
45	

47	2012	:1
48	2007	:2
49	2011-2010	:3
50	2011	:4
51	2007	:5
52	2010	1000 :6
53	2010	:7
54	(15)	:8
	2011	
55	2010	:9
56	2010	:10
57		:11
	2012/2011	
58		:12
	2012/2011	
59	2012/2011	:13
60	(15)	:14
	2011	
61	(15)	:15
	2011	
62	(15)	:16
	2011	
63	2011	:17
64	2011	:18

65			:19
		2010/2009	
66	2010/2009		:20
67	2010/10/01		:21
68	2011		:22
69	2011		:23
70	2011		:24
71	2011		:25
72	2011		:26
73	2011		:27
74			:28
		2010	
75	2010		:29
76			:30
		2010	
77			:31
		2010	
78	2010		:32
79	2011		:33
80			:34
		2007	
81			:35
		2007	
82	2010		:36
83			:37
		2010	-

2011

2012

1.1

2012

1.64

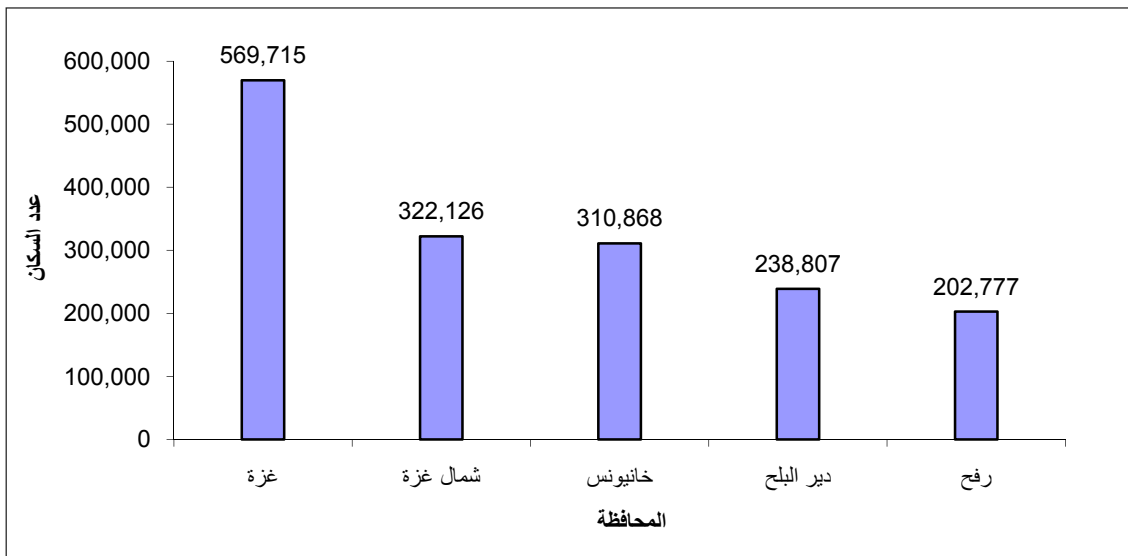
:

%38.3

%13.3

570

2012



:

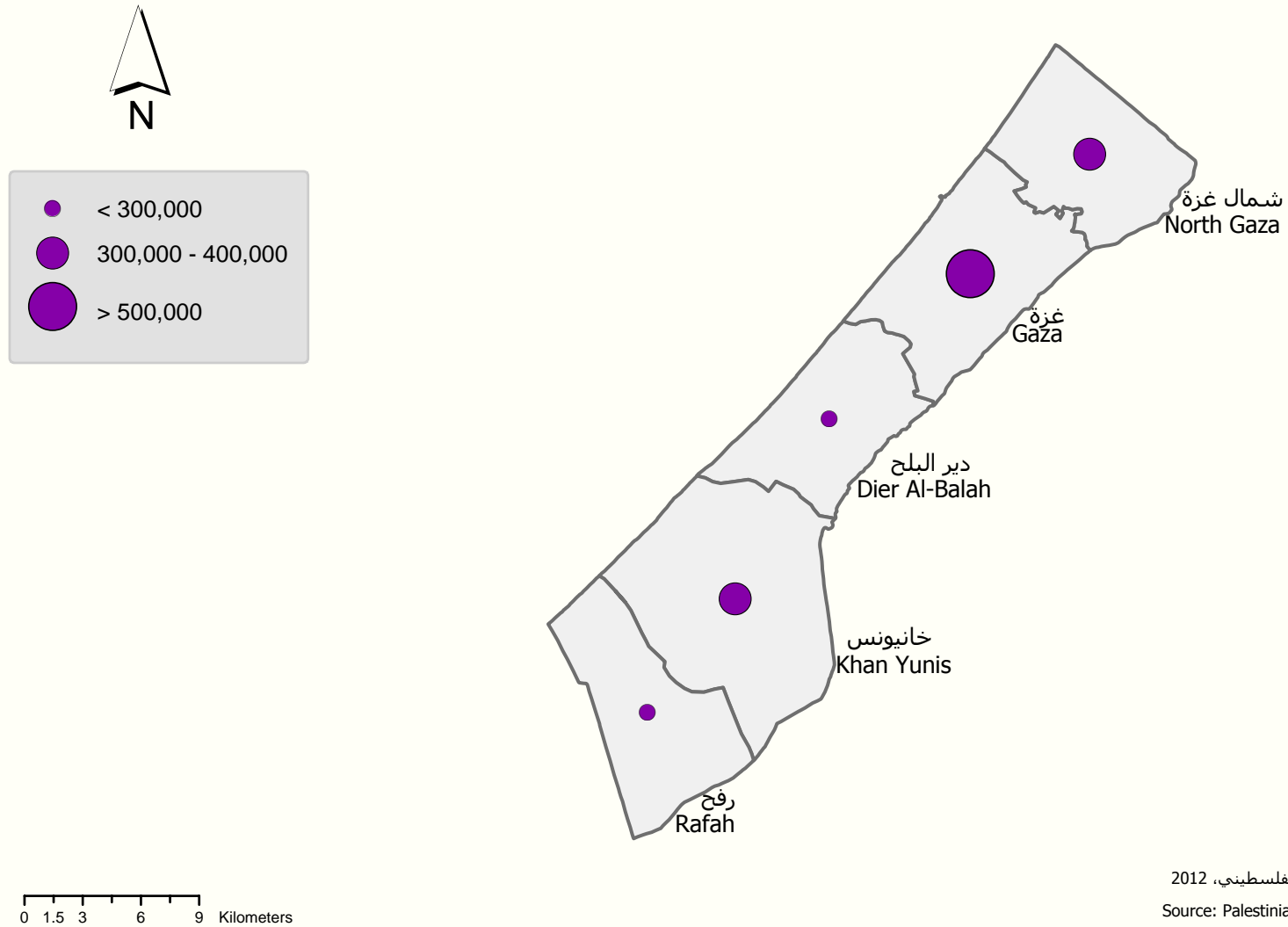
%66.1

2007

913

%86.1

عدد السكان المقدر في محافظات قطاع غزة منتصف العام، 2012 Estimated Population in Gaza Strip Governorates at Mid, 2012



المصدر: الجهاز المركزي للإحصاء الفلسطيني، 2012

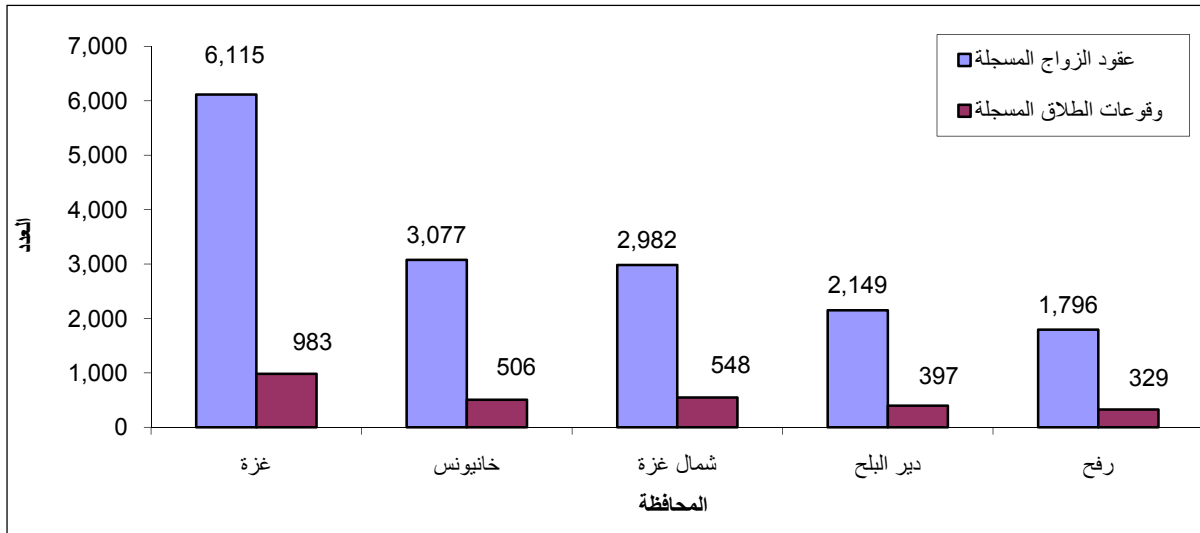


Source: Palestinian Central Bureau of Statistics, 2012

:

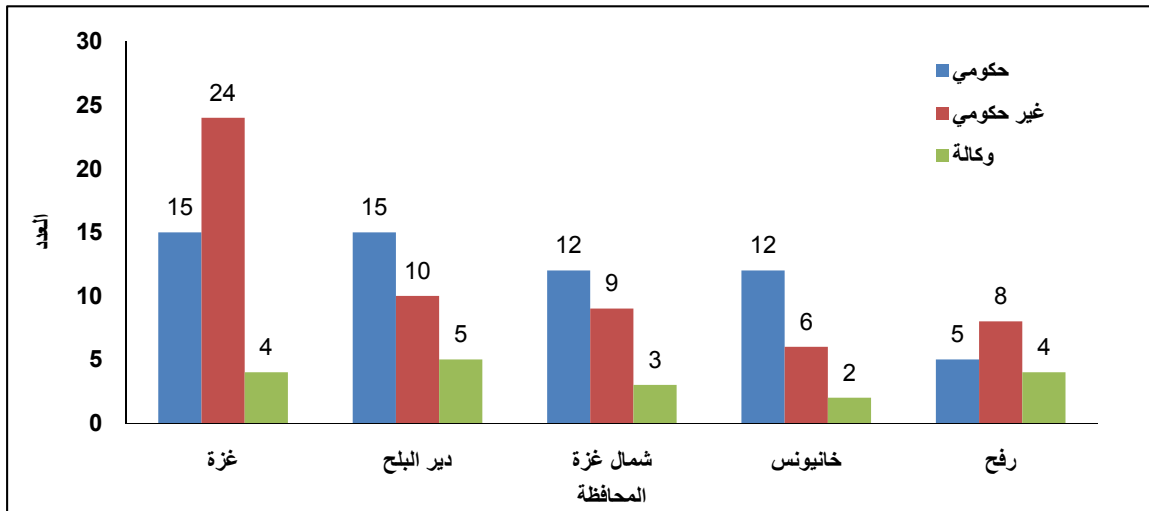
	16,119	2011	%44.4
1000	10.1	2011	
1000	11.1		
19.8	23.8	2011	
24.6			
	22.9		
	19.1		20.9
2011			
		%44.9	2,763
1000	1.7	2011	
1000	1.8		

2011



	25,709	50,075	2007	
	2,706	4,483		24,366
				1,777
		15	25	2010
1000	1.3	2,064		
1000	2.1			
		1000	0.5	
	134		2010	
		57		59
				18

2010



%38.4

(

15)

2011

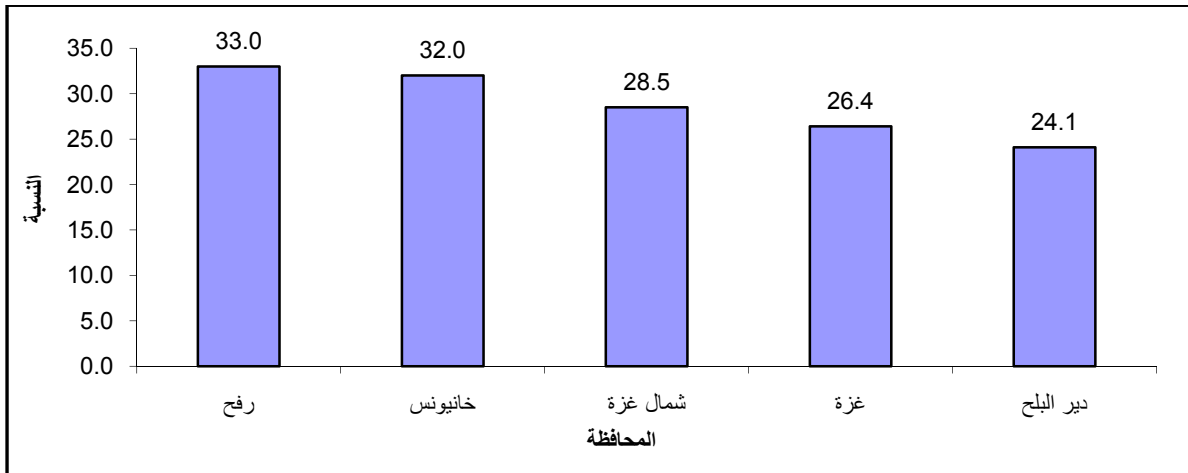
%63.9

%12.4

%6.4

%71.3

2011 (15)



%25.8 %44.0 2011 %28.7

2010 % 38.0

%18.3

%.%34.1

%40.8

2010
620.1

719.0

396 688

2012/2011

48 ()

244 (134 262)

.(11 37)

460,784

106,281

229,904

230,880

2012/2011

119,462

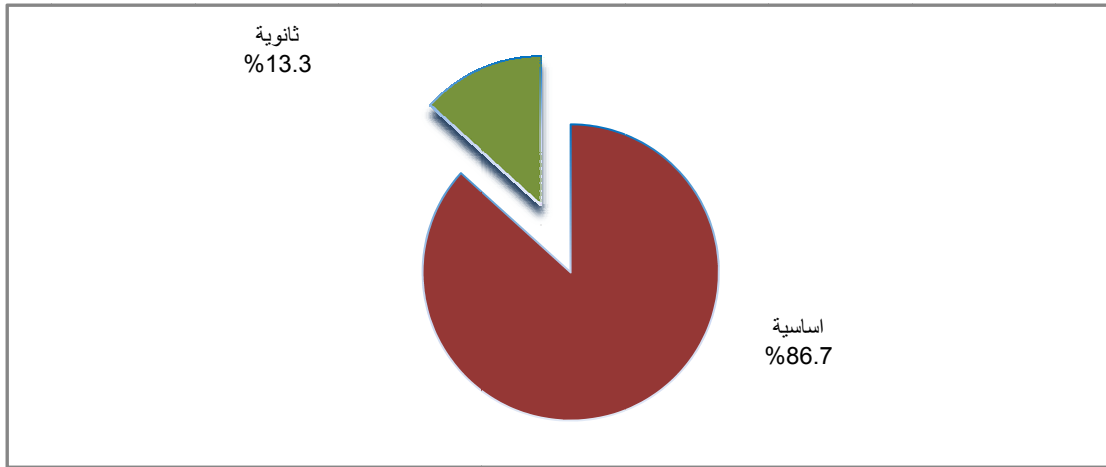
10,848

113,751

5,865

104,577

2012/2011



2011

(15)

.%9.5

%12.5

.%10.7

%14.3

()

%4.5

%10.7

%8.2

.%6.7

%2.3

(15)

.2011

822

4

66

73

2011

3

2.1

:

%6.1

2010 ² 365

%7.9

² 75.2

%20.6

.2010/2009

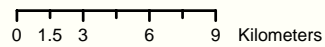
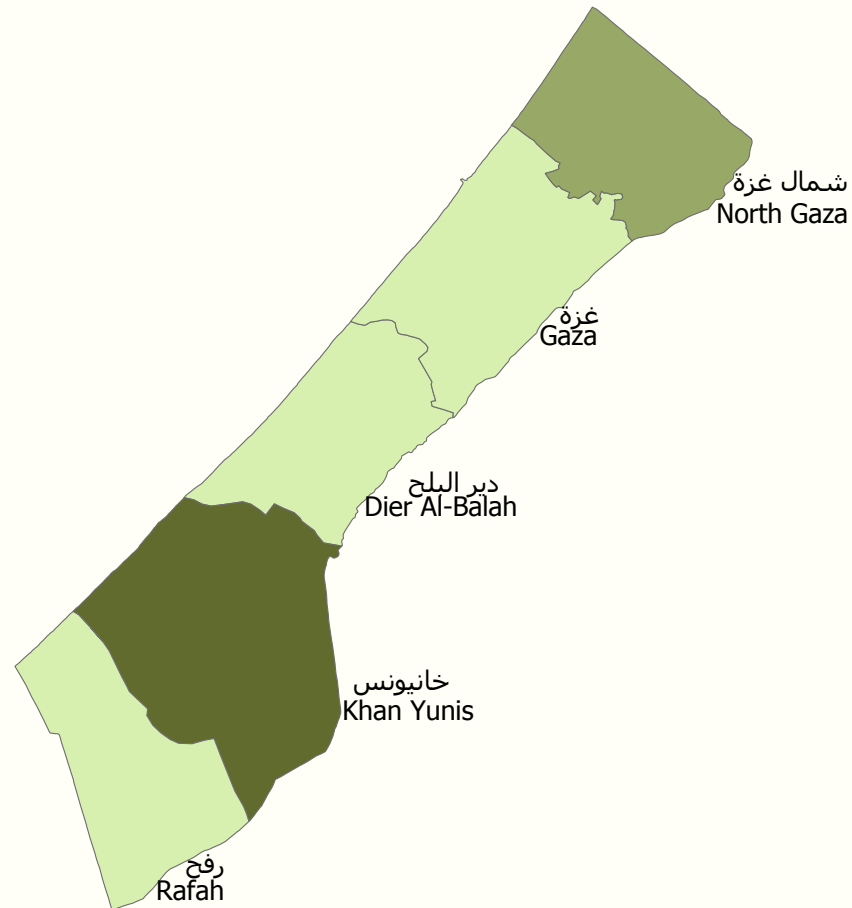
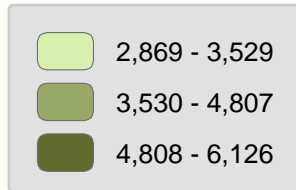
%18.3

20,402

13,909

	3,131			%68.2
	3,362			%15.3
		.2010/2009		%16.5
	9,635	2010/10/01		
	61,403			%28.4
12,150				%10.8
		.		%5.5
	%6.6	18	2011	
1,446.8				%7.0
		%10.1		
		.	134	2011
	0.5	2011		
				%6.7

عدد الحيازات الزراعية في محافظات قطاع غزة، 2010/2009
Agricultural Holdings in Gaza Strip Governorates, 2009/2010



:

2011 %59.6
 %93.6 . %39.7

:

()

: .1

22

.2010 11

: .2

(33)

.2010

: .3

25 2010

8

: .4

23

()

.2010

29

:

%11.7 2011 12

985

536

8,987

3,063

%4.4

3.1

:

74,938 87,316 2007 32,047
 . . . 12,378

:

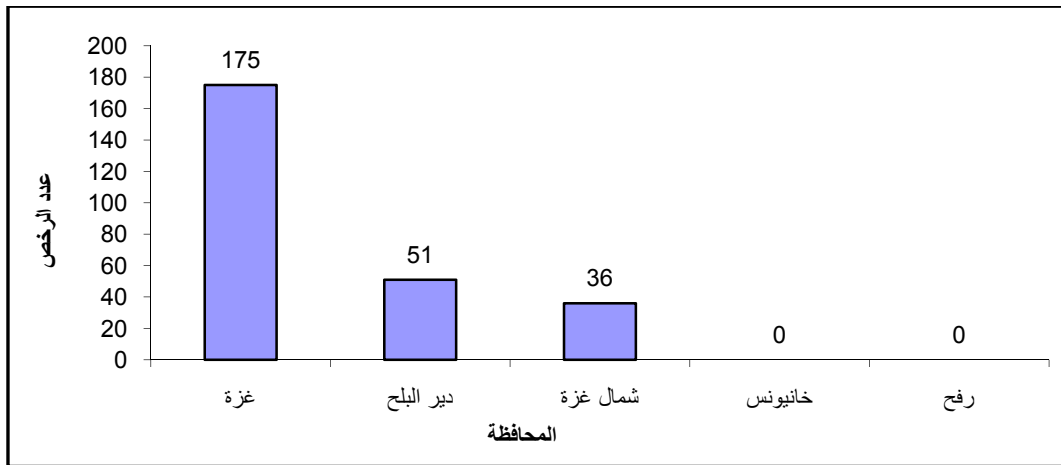
.2010 60,901 %50.6
 . . %23.1

:

262 2011 318.6
 . 295.9

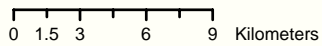
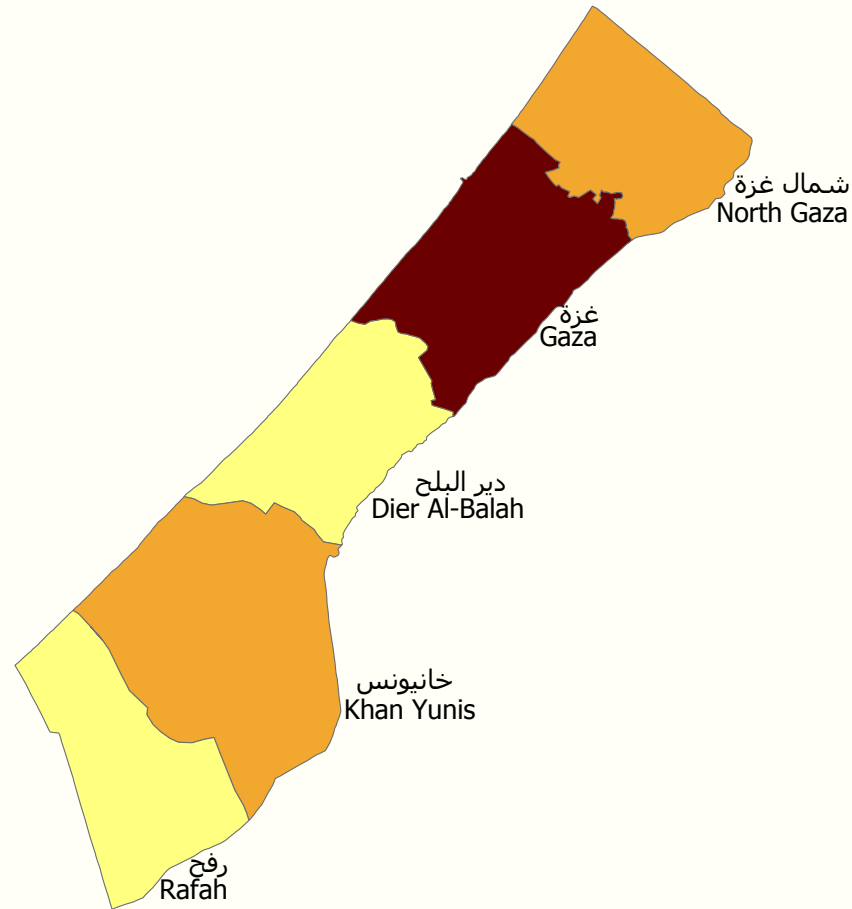
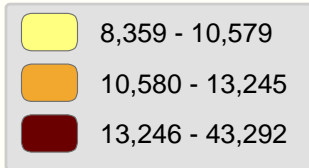
2011

*



*

عدد المنشآت العاملة في القطاع الخاص والقطاع الأهلي والشركات الحكومية في محافظات قطاع غزة، 2010
Number of Establishments in Operation in the Private Sector, Non Governmental Organization Sector
and Government Companies in Gaza Strip Governorates, 2010



المصدر: الجهاز المركزي للإحصاء الفلسطيني، 2012
Source: Palestinian Central Bureau of Statistics, 2012



2011

:PCBS

:

:

•

%41.0

2009

2010

385.2

%52.2

201.2

111.1

%28.8

%0.3

102

:

•

2009

2010

112

2009

3.3

%30.3

1.0

2.3

%69.7

:

.2010

381.9

.()

:()
(15)

:

:

1948

:

-:

()

:

()

:

:

:

:

:

(50)

()

(5)

(50) ()

(3)

:

...

.

:

:

:

: .1

.() ()

: .2

: .3

: .4

:

(0.5)

(1)

:

:

24

:

)

(

:

:

.

:

:

:

:

:

:

.()

:

()

:

(35)

:

:

:

()² (4)
()

:

(- -)

:

()

:

)
 (" ")
 ")
)

)
 .(

:

("

(

:

:

:

:

:

:

:

() :

:

:

:

:

() : ()

:

:

:

:

:

:

:

:

.()

:

:

)

(

.2010

:

:

:

:()

()

()

:

:

.(...)

:

:()

:

	.2012	.1
	-2012/2011	
.2011	.2012	.2
.2012/4/8	.2012	.3
	2012	.4
	:2010	.5
2010	.2011	.6
	.2011	.7
2010 -	.2011	.8
.2011	.2012	.9
	.2012	.10
	.2007	
.2011	.2012	.11
.2011	.2012	.12
.2011		.13
.2010	.2012	.14
.2011	.2012	.15

	2011	:PCBS
	.2012	.16
	- .2007	
:	.2011	.17
	- .2010	
2007	.2012	.18
	- .2010	
.2010	.2011	.19
	-	

Tables

2012

:1

Table 1: Estimated Population in Gaza Strip Governorates by Sex, Mid-2012

Governorate /Region	Females	Males	Total	/
Palestinian Territory	2,112,927	2,180,386	4,293,313	
West Bank	1,303,606	1,345,414	2,649,020	
Gaza Strip	809,321	834,972	1,644,293	
North Gaza	158,051	164,075	322,126	
Gaza	279,708	290,007	569,715	
Deir Al - Balah	118,211	120,596	238,807	
Khan Yunis	152,937	157,931	310,868	
Rafah	100,414	102,363	202,777	

2007

:2

**Table 2: Palestinian Population in Gaza Strip Governorates by Refugee Status
End-2007**

Governorate/Region	Refugee Status				/
	Total	Not Stated	Not-Refugee	Refugee	
Palestinian Territory	3,660,386	55,571	2,067,747	1,537,068	
West Bank	2,279,969	55,351	1,600,551	624,067	
Gaza Strip	1,380,417	220	467,196	913,001	
North Gaza	265,085	1	74,077	191,007	
Gaza	481,669	111	227,474	254,084	
Deir Al - Balah	199,945	20	27,853	172,072	
Khan Yunis	265,566	45	111,442	154,079	
Rafah	168,152	43	26,350	141,759	

2011-2010

:3

Table 3: Registered Marriages and Divorces in Gaza Strip Governorates, 2010-2011

Governorate\Region	وقوعات الطلاق المسجلة		عقود الزواج المسجلة		/
	Registered Divorces		Registered Marriages		
	2011	2010	2011	2010	
Palestinian Territory	6,155	6,150	36,284	37,228	
West Bank	3,392	3,273	20,165	20,185	
Gaza Strip	2,763	2,877	16,119	17,043	
North Gaza	548	526	2,982	3,126	
Gaza	983	1,038	6,115	6,380	
Deir Al - Balah	397	426	2,149	2,194	
Khan Yunis	506	565	3,077	3,397	
Rafah	329	322	1,796	1,946	

2011

:4

Table 4: Median Age at First Marriage in Gaza Strip Governorates by Sex, 2011

Governorate\Region	Females	Male	/
Palestinian Territory	20.0	24.6	
Gaza Strip	19.8	23.8	
North Gaza	19.1	22.9	
Gaza	19.2	23.6	
Deir Al - Balah	20.9	24.3	
Khan Yunis	20.3	24.6	
Rafah	20.2	24.1	

2007

:5

Table 5: Registered Live Births and Deaths Registered in Gaza Strip Governorates by Sex, 2007

Governorate\Region	Deaths			Births			/
	Total	Females	Males	Total	Females	Males	
Gaza Strip	4,483	1,777	2,706	50,075	24,366	25,709	
North Gaza	746	267	479	8,831	4,354	4,477	
Gaza	1,742	682	1,060	18,632	9,007	9,625	
Deir Al - Balah	657	267	390	6,747	3,306	3,441	
Khan Yunis	811	340	471	9,562	4,626	4,936	
Rafah	527	221	306	6,303	3,073	3,230	

2010

1000

:6

Table 6: Beds Per 1000 Inhabitant and Number of Hospitals and Beds in Gaza Strip Governorates, 2010

Governorate\Region	Number of Beds	Hospitals	1000	/
			Beds Per 1000 Inhabitant	
Gaza Strip	2,064	25	1.3	
North Gaza	176	4	0.6	
Gaza	1,117	13	2.1	
Deir Al - Balah	101	1	0.5	
Khan Yunis	566	5	1.9	
Rafah	104	2	0.6	

2010

:7

Table 7: Hospital Activities in Gaza Strip Governorates, 2010

Activites	Governorate					
	Rafah	Khan Yunis	Deir Al - Balah	Gaza	North Gaza	
Governmental Hospitals	2	3	1	6	3	
Non-Governmental Hospitals	-	2	-	7	1	
Grand Total of Discharges	14,131	51,388	20,573	95,145	15,438	
Grand Total of Beds Occupancy Rate	68.9	68.8	76.4	34.0	60.2	
Mean of Duration (day)	0.5	0.4	0.7	0.7	0.4	()

2011

(15)

:8

Table 8: Percentage Distribution of Population (15 Years and Above) in Gaza Strip Governorates by Sex and Labor Force Status, 2011

Labor Force Status and Sex	Gaza Strip	Governorate				
		Rafah	Khan Yunis	Deir Al - Balah	Gaza	North Gaza
Both Sexes						
In Labor Force	38.4	39.9	39.9	38.4	37.6	37.6
Outside Labor Force	61.6	60.1	60.1	61.6	62.4	62.4
Total	100	100	100	100	100	100
Full Employment	64.9	59.2	59.4	69.9	68.2	64.5
Underemployment	6.4	7.8	8.6	4.0	5.4	7.0
Unemployment	28.7	33.0	32.0	24.1	26.4	28.5
Total	100	100	100	100	100	100
Males						
In Labor Force	63.9	62.8	65.5	63.8	63.4	64.1
Outside Labor Force	36.1	37.2	34.5	36.2	36.6	35.9
Total	100	100	100	100	100	100
Full Employment	67.1	61.9	62.1	73.4	69.5	66.3
Underemployment	7.1	8.6	9.7	4.1	6.1	7.8
Unemployment	25.8	29.5	28.2	22.5	24.4	25.9
Total	100	100	100	100	100	100
Females						
In Labor Force	12.4	16.3	14.1	13.1	10.4	11.3
Outside Labor Force	87.6	83.7	85.9	86.9	89.6	88.7
Total	100	100	100	100	100	100
Full Employment	53.2	48.6	47.1	53.5	59.5	54.0
Underemployment	2.8	4.5	3.3	3.3	1.2	2.9
Unemployment	44.0	46.9	49.6	43.2	39.3	43.1
Total	100	100	100	100	100	100

2010

:9

Table 9: Average Monthly Household Expenditure and Consumption in Dinar (JD) in Gaza Strip Governorates, 2010

Indicators	Governorate					
	Rafah	Khan Yunis	Deir Al - Balah	Gaza	North Gaza	
Food cash expenditure	310.2	257.3	303.1	281.4	314.7	
Total Food Consumption	311.1	260.5	313.6	283.4	316.5	
Non-food cash expenditure	333.9	311.2	281.0	364.3	306.9	
Total Non-Food Consumption	415.0	394.9	380.0	473.4	408.9	
Total Consumption	726.1	655.4	693.7	756.8	725.4	الاستهلاك الكلي
Total Cash Expenditure	707.6	620.1	655.5	719.0	671.1	الإنفاق النقدي الكلي

2010

:10

Table 10: Poverty Rates According to Actual Monthly Consumption Patterns of Individuals in Gaza Strip Governorates, 2010

Governorate/Region	Poverty Rates				/
	Deep Poverty	Poverty Severity	Poverty Gap	Poverty	
Gaza Strip	23.0	3.9	10.3	38.0	
North Gaza	16.1	2.7	7.8	34.6	
Gaza	27.3	4.6	11.9	40.0	
Deir Al - Balah	21.2	3.5	9.5	37.9	
Khan Yunis	27.8	4.9	12.3	40.8	
Rafah	17.0	2.4	7.8	34.1	

2012/2011

*

:11

Table 11: Schools and Students* in Gaza Strip Governorates by Stage and Supervising Authority, 2011/2012

Supervising Authority/ Governorate	Total		Stage				/
			Secondary		Basic		
	Number of Students	Number of Schools	Number of Students	Number of Schools**	Number of Students	Number of Schools	
Gaza Strip							
Government	225,743	396	60,588	134	165,155	262	
UNRWA	218,328	244	-	-	218,328	244	
Private	16,713	48	686	11	16,027	37	
Total	460,784	688	61,274	145	399,510	543	
North Gaza							
Government	40,716	71	10,920	22	29,796	49	
UNRWA	40,717	40	-	-	40,717	40	
Private	1,102	7	-	-	1,102	7	
Total	82,535	118	10,920	22	71,615	96	
Gaza							
Government	100,390	173	21,636	46	78,754	127	
UNRWA	57,221	64	-	-	57,221	64	
Private	11,442	25	479	8	10,963	17	
Total	169,053	262	22,115	54	146,938	208	
Deir Al - Balah							
Government	21,592	40	9,176	24	12,416	16	
UNRWA	43,879	49	-	-	43,879	49	
Private	1,294	5	157	2	1,137	3	
Total	66,765	94	9,333	26	57,432	68	
Khan Yunis							
Government	43,455	77	11,562	27	31,893	50	
UNRWA	41,338	49	-	-	41,338	49	
Private	2,266	9	50	1	2,216	8	
Total	87,059	135	11,612	28	75,447	107	
Rafah							
Government	19,590	35	7,294	15	12,296	20	
UNRWA	35,173	42	-	-	35,173	42	
Private	609	2	-	-	609	2	
Total	55,372	79	7,294	15	48,078	64	

*:The students in the governorate schools not the governorate students in schools.

** :includes schools with basic and secondary stage or secondary stage only.

2012/2011

:12

Table 12: Average Number of Students Per Class in Gaza Strip Governorates Schools by Stage and Supervisory Authority, 2011/2012

Level / Governorate	Supervising Authority			/ Grand Average	/
	Private	UNRWA	Government		
Basic					
North Gaza	17.8	37.0	36.6	36.2	
Gaza	25.3	37.2	36.7	35.7	
Deir Al - Balah	21.9	36.6	33.4	35.4	
Khan Yunis	21.9	36.3	35.7	35.4	
Rafah	26.5	35.9	36.0	35.7	
Secondary					
North Gaza	-	-	38.6	38.6	
Gaza	18.4	-	36.7	36.0	
Deir Al - Balah	26.2	-	35.2	35.0	
Khan Yunis	16.7	-	37.7	37.5	
Rafah	-	-	39.2	39.2	

2012/2011

:13

Table 13: Average Number of Students Per Teacher in Gaza Strip Governorates Schools by Supervisory Authority, 2011/2012

Governorate/Region	Supervising Authority			Total	/
	Private	UNRWA	Government		
Gaza Strip	17.0	28.0	22.7	24.6	
North Gaza	13.4	28.4	23.2	25.2	
Gaza	17.8	27.8	23.5	24.3	
Deir Al - Balah	15.7	27.3	20.4	24.3	
Khan Yunis	16.2	28.4	22.1	24.4	
Rafah	19.0	28.5	21.7	25.5	

2011

(15)

:14

Table 14: Percentage Distribution of Palestinian Population (15 Years and Above) in Gaza Strip Governorates by Educational Attainment, 2011

Educational Attainment	Gaza Strip	Governorate				
		Rafah	Khan Yunis	Deir Al - Balah	Gaza	North Gaza
Illiterate	4.5	5.6	4.8	4.0	3.6	5.4
Can Read and Write	5.0	3.1	5.0	3.5	5.8	5.8
Elementary	12.9	10.9	10.7	11.0	14.8	14.4
Preparatory	35.2	35.3	37.2	34.8	34.7	34.3
Secondary	24.7	26.2	25.2	25.7	23.8	24.1
Associate Diploma	5.2	5.7	4.9	7.2	4.7	4.7
Bachelor and Above	12.5	13.2	12.2	13.8	12.6	11.3
Total	100	100	100	100	100	100

(15)

:15

2011

Table 15: Percentage Distribution of Palestinian Population (15 Years and Above) in the West Bank and Gaza Strip by Educational Attainment and Sex, 2011

Educational Attainment	Gaza Strip			West Bank			
	Females	Males	Both sex	Females	Males	Both sex	
Illiterate	6.7	2.3	4.5	7.8	2.1	4.9	
Can Read and Write	4.0	5.9	5.0	7.2	6.4	6.8	
Elementary	11.4	14.4	12.9	15.2	17.7	16.5	
Preparatory	35.5	34.9	35.2	35.5	39.3	37.5	
Secondary	26.6	22.8	24.7	19.5	19.2	19.3	
Associate Diploma	5.1	5.4	5.2	4.4	4.6	4.5	
Bachelor and Above	10.7	14.3	12.5	10.4	10.7	10.5	
Total	100	100	100	100	100	100	

(15)

:16

2011

Table 16: Literacy Rates of Palestinian Population (15 Years and Above) in Gaza Strip Governorates by Sex and Age Group, 2011

Sex and Age Groups	Gaza Strip	Governorate					
		Rafah	Khanyunis	Deir Al - Balah	Gaza	North Gaza	
Both Sexes							
15-19	99.1	99.3	99.3	99.3	99.0	99.0	19-15
20-24	98.9	98.5	98.5	99.7	99.0	98.8	24-20
25-34	98.6	97.6	99.2	99.2	98.7	98.0	34-25
35-44	98.0	96.8	98.5	98.1	98.9	96.7	44-35
45+	83.2	80.9	82.0	84.3	86.3	79.8	+45
Total	95.5	94.4	95.2	96.0	96.4	94.6	
Males							
15-19	99.1	99.5	99.3	99.8	98.9	98.7	19-15
20-24	99.0	98.8	98.9	99.7	98.7	99.1	24-20
25-34	98.4	97.3	98.6	99.3	98.3	98.5	34-25
35-44	98.7	96.7	99.1	98.7	99.2	98.5	44-35
45+	93.6	92.8	91.4	94.9	95.3	92.3	+45
Total	97.7	97.1	97.3	98.5	98.1	97.4	
Females							
15-19	99.1	99.1	99.3	98.8	99.1	99.2	19-15
20-24	98.8	98.1	98.1	99.7	99.2	98.5	24-20
25-34	98.8	98.0	99.9	99.1	99.2	97.5	34-25
35-44	97.4	96.9	97.9	97.5	98.6	94.7	44-35
45+	73.2	70.5	72.6	74.1	77.5	67.7	+45
Total	93.3	91.7	93.2	93.5	94.7	91.7	

2011

:17

Table 17: Mosques in Gaza Strip Governorates, 2011

Governorate/Region	Number	/
Gaza Strip	822	
North Gaza	186	
Gaza	240	
Deir Al - Balah	100	
Khan Yunis	190	
Rafah	106	

2011

:18

Table 18: Cultural Institutions In Operation in Gaza Strip Governorates, 2011

Cultural Institutions	Gaza Strip	Governorate					
		Rafah	Khan Yunis	Deir Al - Balah	Gaza	North Gaza	
Cultural Centers	66	8	8	17	26	7	
Theaters	3	-	1	-	2	-	
Museums	4	-	-	2	1	1	
Cinema	-	-	-	-	-	-	
Total	73	8	9	19	29	8	

2010/2009

:19

Table 19: Total Area, Cultivated Land Area and Percentage of Cultivated Land Area in Gaza Strip Governorates, 2009/2010

Area: km ²	المساحة: كم ²			
Governorate/Region	Percentage of Cultivated Land Area from Total Area	Cultivated Land Area	Total Area	/
Gaza Strip	20.6	75.2	365	
North Gaza	21.0	12.8	61	
Gaza	14.9	11.0	74	
Deir Al - Balah	24.8	14.4	58	
Khan Yunis	21.9	23.7	108	
Rafah	20.8	13.3	64	

2010/2009

:20

Table 20: Agricultural Holdings in Gaza Strip Governorates by Type of Holding, 2009/2010

Governorate/Region	Total	Type of Holding			/
		مختلطة Mixed	حيوانية Animal	Plant	
Gaza Strip	20,402	3,131	3,362	13,909	
North Gaza	4,807	621	1,101	3,085	
Gaza	2,869	333	616	1,920	
Deir Al - Balah	3,071	499	534	2,038	
Khan Yunis	6,126	1,094	631	4,401	
Rafah	3,529	584	480	2,465	

2010/10/01

:21

Table 21: Livestock in Gaza Strip Governorates by Type, as on 01/10/2010

Governorate/Region	Type of Livestock			/
	Goats	Sheeps	Cows	
Gaza Strip	12,150	61,403	9,635	
North Gaza	4,225	18,806	3,984	
Gaza	2,954	11,460	789	
Deir Al - Balah	996	8,705	898	
Khan Yunis	2,416	14,052	856	
Rafah	1,559	8,380	3,108	

2011

:22

Table 22: Main Economic Indicators for Olive Presses in Gaza Strip Governorates, 2011

Quantity in Metric Ton and Value in US \$ 1000

Indicators	Gaza Strip	Governorate	
		* Khan Yunis and Rafah*	* Gaza and Deir Al-Balah*
Total Operating Olive Presses	18	9	9
Quantity of Olive Pressed	8,562.3	3,931.1	4,631.2
Quantity of Oil Extracted	1,446.8	673.0	773.8
Number of Employed Persons	134	63	71
No. of Unpaid Employees	11	5	6
No. of Paid Employees	123	58	65
Compensation of Employees	141.8	44.4	97.4
Olive Presses Output	724.6	321.0	403.6
Intermediate Consumption	255.8	127.7	128.1
Gross Value Added	468.8	193.3	275.5
Gross Fixed Capital Formation	25.7	5.9	19.8

* The Data of selected Governorates were merged to maintain data confidentiality as stated in the General Statistics Law 2000. .2000

*

2011

:23

Table 23: Percentage Distribution of Households in Gaza Strip Governorates by Type of Housing Unit, 2011

Governorate/Region	Type of Housing Unit				/
	Total	* Other*	Apartment	/ Villa/House	
Gaza Strip	100	0.7	59.6	39.7	
North Gaza	100	-	58.4	41.6	
Gaza	100	-	75.5	24.5	
Deir Al - Balah	100	0.5	43.4	56.1	
Khan Yunis	100	1.7	46.3	52.0	
Rafah	100	2.3	57.2	40.5	

*Other: Includes Independent Room, or Tent, or marginal

: *

2011

:24

Table 24: Percentage Distribution of Households in Gaza Strip Governorates by Tenure of Housing Unit, 2011

Governorate/Region	Tenure of Housing Unit				/
	Total	* Other*	Rented	Owned	
Gaza Strip	100	2.7	3.7	93.6	
North Gaza	100	2.2	2.8	95.0	
Gaza	100	4.7	5.0	90.3	
Deir Al - Balah	100	2.3	2.3	95.4	
Khan Yunis	100	1.5	3.0	95.5	
Rafah	100	0.4	4.2	95.4	

* Other includes From Work and Without Payment

*

2011

:25

Table 25: Percentage Distribution of Households in Gaza Strip Governorates by Number of Rooms per Housing Unit, 2011

Governorate/Region	Average Number of Rooms	Number of Rooms						/
		Total	+5	4	3	2	1	
Gaza Strip	3.6	100	21.1	31.8	32.4	12.8	1.9	
North Gaza	3.4	100	14.2	28.1	43.8	13.2	0.7	
Gaza	3.6	100	23.8	31.4	28.3	13.9	2.6	
Deir Al - Balah	3.7	100	25.1	31.6	31.5	9.9	1.9	
Khan Yunis	3.5	100	18.1	32.3	31.6	15.6	2.4	
Rafah	3.8	100	24.2	38.1	28.6	7.8	1.3	

2011

:26

Table 26: Percentage Distribution of Households in Gaza Strip Governorates by Housing Density, 2011

Governorate/Region	Average of Housing Density	Housing Density					/
		Total	+3.00	2.99-2.00	1.99-1.00	1	
Gaza Strip	1.8	100	14.6	33.6	43.2	8.6	
North Gaza	1.9	100	17.7	35.4	39.4	7.5	
Gaza	1.8	100	14.5	29.0	48.2	8.3	
Deir Al - Balah	1.8	100	16.3	34.6	39.4	9.7	
Khan Yunis	1.8	100	14.9	34.7	41.7	8.7	
Rafah	1.8	100	8.2	40.3	41.8	9.7	

2011

:27

Table 27: Building Licenses Issued in Gaza Strip Governorates by Utilization, 2011

Governorate/Region	مساحة الوحدات السكنية الجديدة المرخصة (1000 م ²) Area of Licensed New Dwellings (1000 m ²)	عدد الوحدات السكنية الجديدة المرخصة Number of Licensed New Dwellings	المساحات المرخصة (الف م ²) Licensed Area (1000 m ²)*	عدد الرخص الصادرة Number of Licenses	المحافظة/المنطقة
Gaza Strip					قطاع غزة
Residential Buildings	291.7	1,548	309.5	247	مبنى سكني
Non-Res. Buildings	4.2	15	9.1	15	مبنى غير سكني
Boundary walls	-	-	0.7	2	أسوار
North Gaza					شمال غزة
Residential Buildings	8.0	57	8.1	33	مبنى سكني
Non-Res. Buildings	-	-	1.7	3	مبنى غير سكني
Boundary walls	-	-	-	-	أسوار
Gaza					غزة
Residential Buildings	269.7	1,409	286.1	165	مبنى سكني
Non-Res. Buildings	4.2	14	7.3	10	مبنى غير سكني
Boundary walls	-	-	0.7	2	أسوار
Deir Al - Balah					
Residential Buildings	14.0	82	15.3	49	مبنى سكني
Non-Res. Buildings	0.0	1	0.1	2	مبنى غير سكني
Boundary walls	-	-	-	-	أسوار
Khan Yunis					
Residential Buildings	-	-	-	-	مبنى سكني
Non-Res. Buildings	-	-	-	-	مبنى غير سكني
Boundary walls	-	-	-	-	أسوار
Rafah					
Residential Buildings	-	-	-	-	مبنى سكني
Non-Res. Buildings	-	-	-	-	مبنى غير سكني
Boundary walls	-	-	-	-	أسوار

*For boundary walls it refers to length in (1000 m)

*

2010

:28

Table 28: Localities in Gaza Strip Governorates by Water Provider Through a Public Network, 2010

Governorate/Region	المجموع Total	Service Provider		المحافظة/المنطقة
		هيئة محلية أخرى Other Local Authority	الهيئة المحلية Local Authority	
Gaza Strip	33	11	22	قطاع غزة
North Gaza	5	1	4	شمال غزة
Gaza	5	1	4	غزة
Deir Al - Balah	11	4	7	دير البلح
Khan Yunis	8	2	6	خانيونس
Rafah	4	3	1	رفح

جدول 29: عدد التجمعات السكانية في محافظات قطاع غزة حسب مصادر المياه البديلة للشبكة، 2010

Table 29: Localities in Gaza Strip Governorates by Alternative Water Sources, 2010

Governorate/Region	Alternative Sources*				المحافظة/المنطقة
	المجموع Total	لا يوجد بديل No Alternative	أخرى Other	آبار ارتوازية Artesian Wells	
Gaza Strip	33	9	2	22	قطاع غزة
North Gaza	5	3	-	2	شمال غزة
Gaza	5	4	1	-	غزة
Deir Al - Balah	11	1	1	9	دير البلح
Khan Yunis	8	1	-	7	خانيونس
Rafah	4	-	-	4	رفح

*: The Alternative Water Source for localities is in the absence of water or network does not cover the localities needs.

*: المصادر البديلة المستخدمة في التجمعات للحصول على المياه في حالة عدم وجود شبكة مياه عامة أو أن شبكة المياه لا تغطي احتياجات التجمعات.

جدول 30: عدد التجمعات السكانية المخدومة من قبل شركة توزيع كهرباء غزة في محافظات قطاع غزة، 2010

Table 30: Localities that are Served by Gaza Electricity Distribution Co. in Gaza Strip Governorates, 2010

Governorate/Region	عدد التجمعات السكانية المخدومة من قبل شركة توزيع كهرباء غزة Localities that are served by Gaza Electricity	المحافظة/المنطقة
Gaza Strip	33	قطاع غزة
North Gaza	5	شمال غزة
Gaza	5	غزة
Deir Al - Balah	11	دير البلح
Khan Yunis	8	خانيونس
Rafah	4	رفح

2010

:31

Table 31: Localities in Gaza Strip Governorates by the Provider of Solid Waste Collection Services, 2010

Governorate/Region	المجموع Total	Doer of Waste Collection		المحافظة/المنطقة
		وكالة الغوث UNRWA	الهيئة المحلية Local Authority	
Gaza Strip	33	8	25	قطاع غزة
North Gaza	5	1	4	شمال غزة
Gaza	5	1	4	غزة
Deir Al - Balah	11	4	7	دير البلح
Khan Yunis	8	1	7	خانيونس
Rafah	4	1	3	رفح

2010

:32

Table 32: Localities in Gaza Strip Governorates by Wastewater Disposal Method, 2010

Governorate/Region	غير مبين Not Stated	حفرة امتصاصية وصماء Porous and Tight Cesspits	شبكة صرف صحي Wastewater Network	المحافظة/المنطقة
Gaza Strip	2	29	23	قطاع غزة
North Gaza	1	4	5	شمال غزة
Gaza	-	5	4	غزة
Deir Al - Balah	-	10	10	دير البلح
Khan Yunis	-	8	2	خانيونس
Rafah	1	2	2	رفح

Note: In some localities there are more than one wastewater disposal method.

ملاحظة: هناك بعض التجمعات السكانية يوجد فيها أكثر من طريقة للتخلص من المياه العادمة.

2011

:33

Table 33: Main Indicators for Hotel Activities in Gaza Strip, 2011

Region	Room Occupancy %	No. of Guest Nights	No. of Guests	Average No. of Beds	Average No. of Rooms	No. of Hotels	
Palestinian Territory	26.1	1,254,496	510,435	11,689	5,528	103	
West Bank	21.7	1,245,509	507,372	10,704	4,992	91	
Gaza Strip	4.4	8,987	3,063	985	536	12	قطاع غزة

:34

2007

Table 34: Establishments in Operation and Employed Persons in the Private and Non Governmental Organization Sectors and Government Companies in Gaza Strip Governorates, 2007

Governorate/Region	No. of Employed Persons			No. of Establishments	/
	Total	Females	Males		
Gaza Strip	87,316	12,378	74,938	32,047	
North Gaza	11,841	1,704	10,137	4,777	
Gaza	43,292	6,000	37,292	13,402	
Deir Al - Balah	10,579	1,547	9,032	4,441	
Khan Yunis	13,245	1,940	11,305	5,735	
Rafah	8,359	1,187	7,172	3,692	

2007

:35

Table 35: Establishments in Operation in the Private and Non Governmental Organization Sectors and Government Companies in Gaza Strip Governorates, 2007

ISIC	Economic Activity	Gaza Strip	Governorate						
			Rafah	Khan Yunis	Deir Al - Balah	Gaza	North Gaza		
A	Agriculture (raising of cattle & other animals)	1,046	160	370	235	152	129	()	
C	Mining & quarrying	1	1	-	-	-	-		
D	Manufacturing	3,529	292	612	428	1,684	513		
E	Electricity and water supply	265	49	82	40	44	50		
F	Construction	241	18	48	13	143	19		
G	Wholesale, retail trade & repairs	18,521	2,137	3,106	2,532	7,817	2,929		
H	Hotels & restaurants	1,318	118	266	197	559	178		
I	Transport, storage & communications	501	128	98	51	179	45		
J	Financial intermediation	252	29	30	23	133	37		
K	Real estate, renting & business activities	1,410	126	213	165	734	172		
M	Education	820	101	174	110	329	106		
N	Health & social work	1,140	143	209	142	524	122		
O	Other community, social & personal services	3,003	390	527	505	1,104	477		
Total		32,047	3,692	5,735	4,441	13,402	4,777		

2010

:36

Table 36: Licensed Road Vehicles in Gaza Strip by Governorates and Type of Vehicle, 2010

Type of Vehicle	Gaza Strip	
Private Cars	30,830	
Taxis	2,841	()
Motorcycles and Moped	14,083	
Buses (Public/ Private)	615	(/)
Trailers and Semi-Trailers	149	
Agricultural Tractors	736	
Road Tractors	2	
Trucks and Commercial Cars	11,172	
Other Vehicles	473	
Total	60,901	

:37

2010

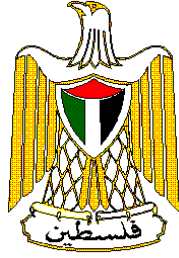
Table 37: Value of Registered Imports and Exports for Gaza Strip by SITC-3 Sections for 2010

Value in Thousand US\$

Section	Exports	Imports	
Total	3,337	385,194	
Food And Live Animals	1,013	111,141	
Beverages And Tobacco	—	11,241	
Raw Materials, Inedible Except Fuels	2,324	1,539	
Mineral Fuels, Lubricants And related Materials	—	201,204	
Animal And Vegetable Oils, Fats And Waxes	—	265	
Chemical And Related Products, n.e.s.*	—	7,594	* . . .
Manufactured Goods Classified mainly By Material	—	46,369	
Machinery And Transport Equipment's	—	5,739	
Miscellaneous Manufactured Articles	—	102	

* n.e.s: not elsewhere specified

* . . .



**Palestinian National Authority
Palestinian Central Bureau of Statistics**

**Gaza Strip Governorates
Statistical Yearbook, 2011**

September, 2012

PAGE NUMBERS OF ENGLISH TEXT ARE PRINTED IN SQUARE BRACKETS.
TABLES ARE PRINTED IN ARABIC FORMAT (FROM RIGHT TO LEFT).

**This document is prepared in accordance with the
standard procedures stated in the Code of Practice for
Palestine Official Statistics 2006**

© September 2012.
All rights reserved.

Suggested Citation:

Palestinian Central Bureau of Statistics, 2012. Gaza Strip Governorates Statistical Yearbook, 2011. Ramallah - Palestine.

All correspondence should be directed to:
**Palestinian South Bureau of Statistics
P.O.Box 1647 Ramallah, Palestine.**

Tel: (972/970) 2 298 2700
Fax: (972/970) 2 298 2710
Toll Free: 1800300300
E-Mail: diwan@pcbs.gov.ps
Web-site: <http://www.pcbs.gov.ps>

Acknowledgment

The Palestinian Central Bureau of Statistics (PCBS) extends its deep appreciations to all those who contributed to produce this yearbook.

Gaza Strip Governorates Statistical Yearbook, 2011 has been prepared by a technical team from PCBS and with joint funding by the Palestinian National Authority (PNA) and the Core Funding Group (CFG) for the year 2012 represented by the Representative Office of Norway to PNA and the Swiss Development and Cooperation Agency (SDC).

Moreover, PCBS very much appreciates the distinctive efforts of the Core Funding Group (CFG) for their valuable contribution to funding the project.

Work Team

- **Report Preparation**
Ayat Maharmeh
 - **Maps Design**
Nafir Massad
 - **Graphic Design**
Ahmad Sawalmeh
 - **Dissemination Standards**
Hanan Janajreh
 - **Preliminary Review**
Maen Salhab
Mohammad Omari
Nazmi Harb
 - **Final Review**
Mahmoud Jaradat
 - **Overall Supervision**
Ola Awad
- President of PCBS

Important Note

Statistical data were derived from PCBS publications. For further details of the methodology and data quality standards relating to individual topics, readers can visit <http://www.pcbs.gov.ps>.

Special symbols were used in the tables of this book as follows:

(-): Nil, Data are not available.

Table of Contents

Subject	Page
List of Tables	
Introduction	
Chapter One: Main Indicators	[15]
1.1 Demographic Indicators	[15]
1.2 Geographic Indicators	[17]
1.3 Economic Indicators	[19]
Chapter Two: Concepts and Definitions	[21]
References	[27]
Tables	45

List of Tables

Table	Page
Table 1: Estimated Population in Gaza Strip Governorates by Sex, Mid-2012	47
Table 2: Palestinian Population in Gaza Strip Governorates by Refugee Status, End-2007	48
Table 3: Registered Marriages and Divorces in Gaza Strip Governorates, 2010-2011	49
Table 4: Median Age at First Marriage in Gaza Strip Governorates by Sex, 2011	50
Table 5: Registered Live Births and Deaths Registered in Gaza Strip Governorates by Sex, 2007	51
Table 6: Beds Per 1000 Inhabitant and Number of Hospitals and Beds in Gaza Strip Governorates, 2010	52
Table 7: Hospital Activities in Gaza Strip Governorates, 2010	53
Table 8: Percentage Distribution of Population (15 Years and Above) in Gaza Strip Governorates by Sex and Labor Force Status, 2011	54
Table 9: Average Monthly Household Expenditure and Consumption in Dinar (JD) in Gaza Strip Governorates, 2010	55
Table 10: Poverty Rates According to Actual Monthly Consumption Patterns of Individuals in Gaza Strip Governorates, 2010	56
Table 11: Schools and Students in Gaza Strip Governorates by Stage and Supervising Authority, 2011/2012	57
Table 12: Average Number of Students Per Class in Gaza Strip Governorates schools by Stage and Supervisory Authority, 2011/2012	58
Table 13: Average Number of Students Per Teacher in Gaza Strip Governorates Schools by Supervisory Authority, 2011/2012	59
Table 14: Percentage Distribution of Palestinian Population (15 Years and Above) in Gaza Strip Governorates by Educational Attainment, 2011	60
Table 15: Percentage Distribution of Palestinian Population (15 Years and Above) in Gaza Strip Governorates by Educational Attainment and Sex, 2011	61
Table 16: Literacy Rates of Palestinian Population (15 Years and Above) in Gaza Strip Governorates by Sex and Age Group, 2011	62
Table 17: Mosques in Gaza Strip Governorates, 2011	63
Table 18: Cultural Institutions In Operation in Gaza Strip Governorates, 2011	64
Table 19: Total Area, Cultivated Land Area and Percentage of Cultivated Land Area in Gaza Strip Governorates, 2009/2010	65
Table 20: Agricultural Holdings in Gaza Strip Governorates by Type of Holding, 2009/2010	66
Table 21: Livestock in Gaza Strip Governorates by Type, as on 01/10/2010	67

Table	Page
Table 22: Main Economic Indicators for Olive Presses in Gaza Strip Governorates, 2011	68
Table 23: Percentage Distribution of Households in Gaza Strip Governorates by Type of Housing Unit, 2011	69
Table 24: Percentage Distribution of Households in Gaza Strip Governorates by Tenure of Housing Unit, 2011	70
Table 25: Percentage Distribution of Households in Gaza Strip Governorates by Number of Rooms per Housing Unit, 2011	71
Table 26: Percentage Distribution of Households in Gaza Strip Governorates by Housing Density, 2011	72
Table 27: Building Licenses Issued in Gaza Strip Governorates by Utilization, 2011	73
Table 28: Localities in Gaza Strip Governorate by Water Provider Through a Public Network, 2010	74
Table 29: Localities in Gaza Strip Governorates by Alternative Water Sources, 2010	75
Table 30: Localities that are served by Gaza Electricity Distribution Co. in Gaza Strip Governorates, 2010	76
Table 31: Localities in Gaza Strip Governorates by the Provider of Solid Waste Collection Services, 2010	77
Table 32: Localities in Gaza Strip Governorates by Wastewater Disposal Method, 2010	78
Table 33: Main Indicators for Hotel Activities in Gaza Strip, 2011	79
Table 34: Establishments in Operation and Employed Persons in the Private and Non Governmental Organization Sectors and Government Companies in Gaza Strip Governorates, 2007	80
Table 35: Establishments in Operation in the Private and Non Governmental Organization Sectors and Government Companies in Gaza Strip Governorates, 2007	81
Table 36: Licensed Road Vehicles in Gaza Strip by Governorates and Type of Vehicle, 2010	82
Table 37: Value of Registered Imports and Exports for Gaza Strip by SITC-3 Sections for 2010	83

Introduction

Since its inception, PCBS has sought to build a system of Palestinian official statistics based on the needs of society and in line with recommended standards, including full membership in the international statistical community. PCBS has adopted the principle of progression within existing Palestinian priorities as the basis for work towards developing the statistical system. PCBS has accomplished many statistical activities using primary sources, including censuses and field surveys, and secondary sources such as administrative records in cooperation with public and private sector institutions.

We are pleased to present Gaza Strip Governorates Statistical Yearbook, 2011 to provide continuous time series data of general trends in different areas through a comprehensive statistical reference that covers most population, social, economic, and geographic areas.

This book is one of the most important and comprehensive official statistical references relating to Gaza Strip Governorates.

This yearbook is divided into two chapters: the first chapter defines the main indicators relating to Gaza Strip Governorates. The second chapter contains the concepts and definitions used in this statistical yearbook.

We believe that we have succeeded in bridging gaps in information and have contributed to providing a key reference of official Palestinian statistics that will serve the developmental process and assist decision makers to create plans based on professional and scientific criteria at national and governorate level.

September, 2012

**Ola Awad
President of PCBS**

Chapter One

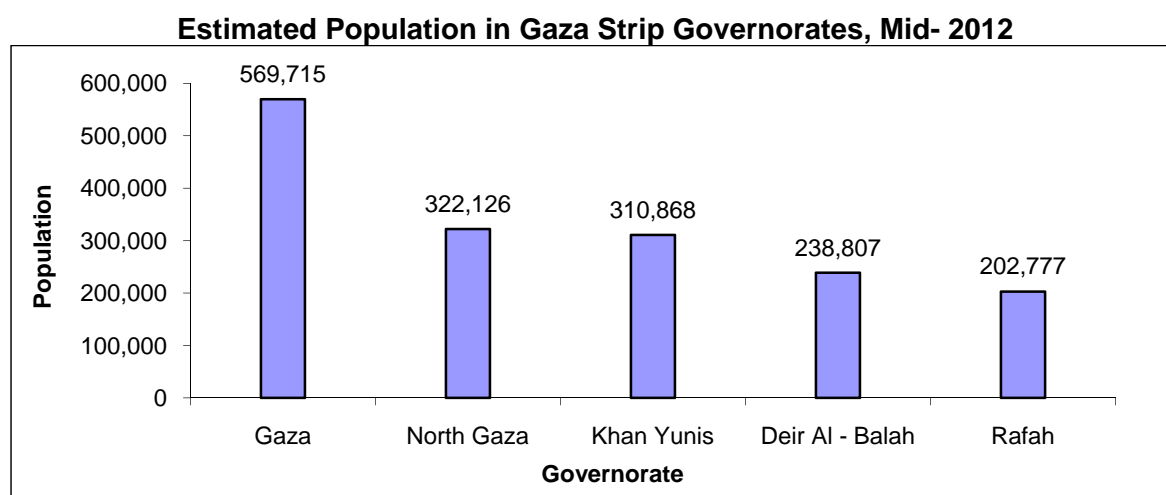
Main Indicators

This chapter presents the main findings of the most important demographic, geographic and economic indicators of Gaza Strip Governorates.

1.1 Demographic Indicators

Population:

According to PCBS estimates, the population of Gaza Strip Governorates was around 1.64 million in mid-2012

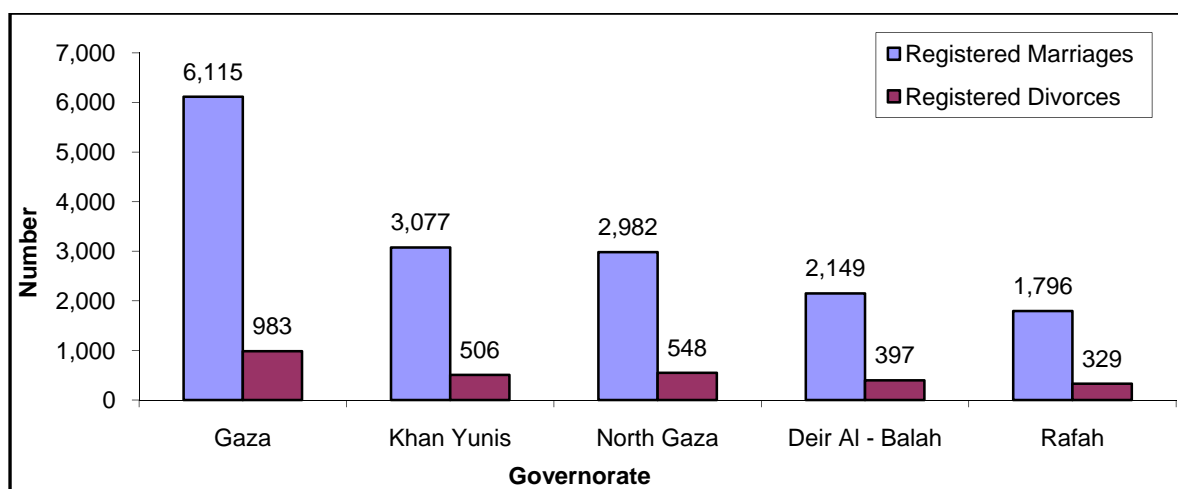


There are 913 thousand Palestinian refugees in Gaza Strip Governorates are refugees.

There were 16,119 registered marriages in Sharia courts and churches in Gaza Strip Governorates in 2011, which accounted for 44.4% of all marriages in the Palestinian Territory.

There were 2,763 registered divorces in Sharia courts in 2011, which accounted for 44.9 % of all cases of divorce in the Palestinian Territory.

Registered Marriages and Divorces in Gaza Strip Governorates, 2011



The median age at first marriage in Gaza Strip Governorates was 23.8 years for males and 19.8 years for females in 2011.

Births and Deaths:

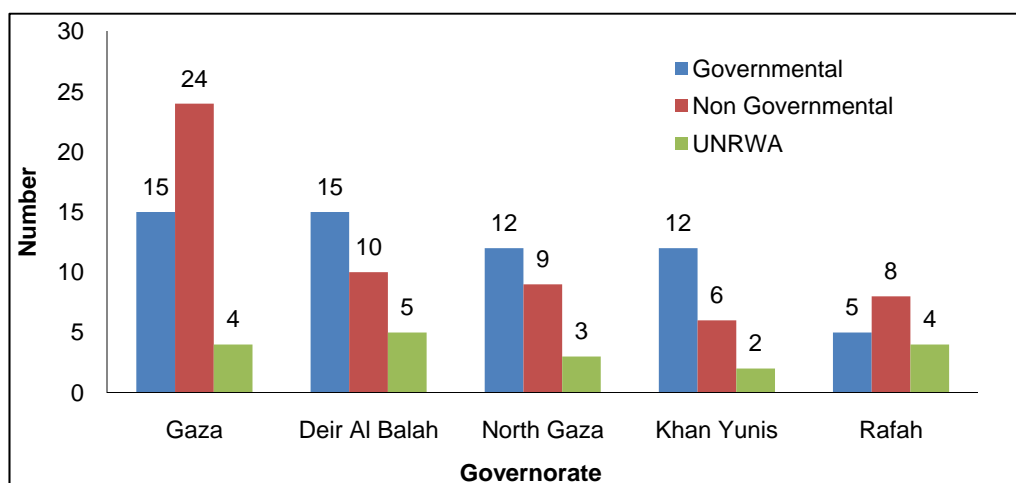
There were 50,075 registered live births in 2007 in Gaza Strip Governorates, 25,709 male and 24,366 female. In the same year, there were 4,483 registered deaths: 2,706 males and 1,777 females.

Health:

There were 25 hospitals in 2010 in Gaza Strip Governorates, including 15 government hospitals and the rest non-governmental hospitals. The total number of beds was 2,064, making an average of 1.3 beds per 1000 inhabitants.

There were 134 primary health care centers in 2010 in Gaza Strip Governorates, with 59 health centers supervised by the Ministry of Health, 57 run by non-governmental organizations, and 18 health centers run by UNRWA.

Primary Health Care Clinics and Centers in Gaza Strip Governorates by Supervisory Authority, 2010



Labor:

The labor force participation rate of persons aged 15 years and above in Gaza Strip Governorates was 38.4% : 12.4% for females and 63.9% for males. Of these, 64.9% were in full employment and 6.4% were underemployed.

The unemployment rate in Gaza Strip Governorates was 28.7% : 44.0% for females and 25.8% for males.

Poverty:

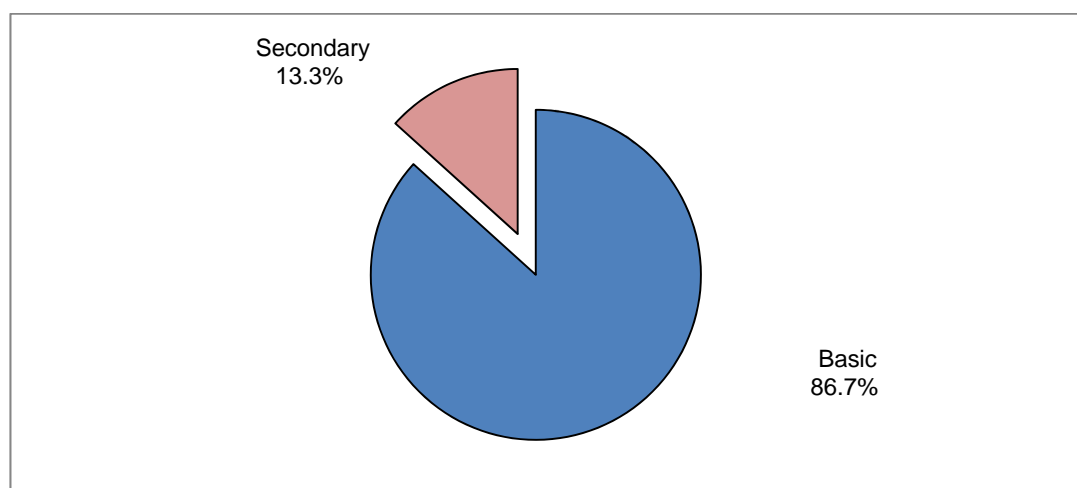
The poverty rate among individuals in Gaza Strip Governorates was 38.0% in 2010, compared to 18.3% in the West Bank for the same year. Monthly household expenditure in the Gaza governorate was higher than in any other Gaza Strip governorate at JD 719.0.

Education:

Schools in Gaza Strip Governorates

There were 688 schools in total with 460,784 students: 230,880 males and 229,904 females.

**Percent Distribution of Students in Gaza Strip Governorates
Schools by Stage, 2011/2012**



2.1 Geographic Indicators

Environment:

In 2010, local authorities provided water to 22 localities via the public network in Gaza Strip Governorates while other authorities provided water services to 11 localities.

All localities in the Gaza Strip (33 localities) were served by the Gaza Electricity Distribution Company in 2010.

Local authorities collected solid waste from 25 localities in Gaza Strip Governorates while UNRWA collected solid waste in eight localities in 2010.

The wastewater network was used by 23 localities for the disposal for wastewater in Gaza Strip Governorates in 2010. The alternative methods used in localities for the disposal of

wastewater in the absence of a sewerage system or network do not cover all users (residential, commercial, or industrial): 29 localities used porous and tight cesspits.

Agriculture and Land Use:

Gaza Strip Governorates were 365 km² in size in 2010, which represents around 6.1% of the total area of the Palestinian Territory. During the 2009/2010 agricultural year, cultivated land made up 75.2 km² representing 7.9% of all cultivated land in the Palestinian Territory and 20.6% of the total area of the Gaza Strip Governorates.

During the 2009/2010 agricultural year, there were 20,402 agricultural holdings in Gaza Strip Governorates, representing 18.3% of all agricultural holdings in the Palestinian Territory. Plant holdings were the most common type of agricultural holding: there were 13,909 plant holdings comprising 68.2% of all agricultural holdings in Gaza Strip Governorates. There were 3,131 mixed agricultural holdings, comprising 15.3% of all holdings, and 3,362 animal holdings comprising 16.5% of all agricultural holdings in Gaza Strip Governorates.

There were 9,635 cows raised in Gaza Strip Governorates, which represent 28.4% of cows in the Palestinian Territory, in addition to 61,403 sheep representing 10.8% of sheep in the Palestinian Territory, and 12,150 goats representing 5.5% of goats raised in the Palestinian Territory, as per the enumeration day of the first of October 2010.

In 2011, there were 18 active olive presses in Gaza Strip Governorates representing 6.6 % of all olive presses in operation in the Palestinian Territory. The quantity of oil extracted totaled 1,446.8 tons, equivalent to 7.0% of all oil produced in the Palestinian Territory.

There were 134 people employed in olive pressing activities in Gaza Strip Governorates in 2011, comprising 10.1 % of all employees in olive pressing in the Palestinian Territory.

The value added of olive pressing activities totaled USD 0.5 million in Gaza Strip Governorates in 2011, representing 6.7% of the overall value added in the Palestinian Territory.

Housing Conditions:

In Gaza Strip Governorates, 59.6% of households live in apartment and villa or house, and 39.7 % live in an apartment.

Tourism:

There were 12 hotels operating in Gaza Strip Governorates with an average of 536 rooms and 985 beds. During 2011, the total number of hotel guests was 3,063, spending 8,987 nights. The room occupancy rate in Gaza Strip Governorates hotels was 4.4% .

3.1 Economic Indicators

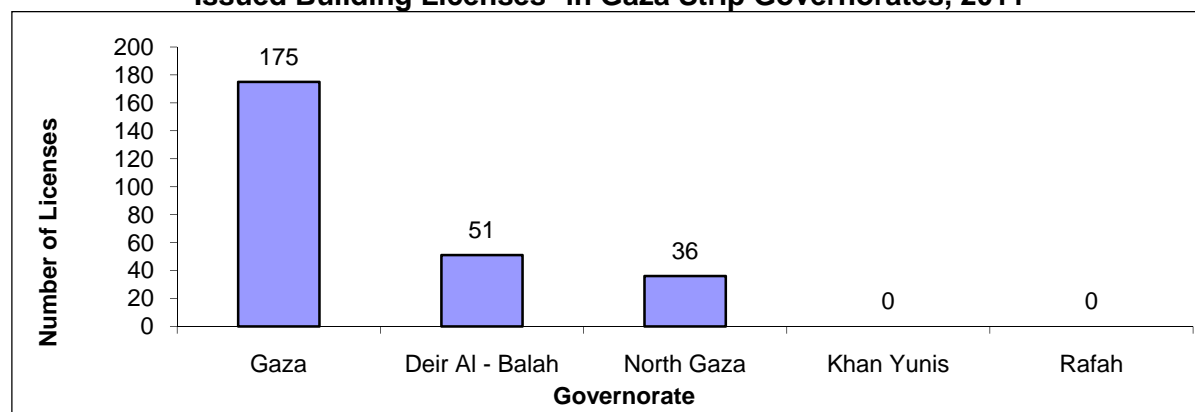
Establishments:

There were 32,047 economic establishments operating in the Private Sector, Non Governmental Organization Sector and Governmental Companies in Gaza Strip Governorates in 2007 with a total of 87,316 workers, comprising 74,938 males and 12,378 females.

Building Licenses:

In 2011, 262 building licenses were issued in Gaza Strip Governorates with a total area of 318.6 m². Of these licenses, 295.9 m² were for new buildings and 318.6 m² were for Licensed Area.

Issued Building Licenses* in Gaza Strip Governorates, 2011



*Data do not include boundary walls licenses.

Transportation:

There were 60,901 licensed vehicles in Gaza Strip Governorates in 2010 .

Registered Foreign Trade:

Imports:

Imports increased by 41.0% in Gaza Strip Governorates in 2010 compared to 2009 and totaled USD 385.2 million.

Exports:

Exports increased significantly to about USD 3.3 million while exports reached from Gaza Strip in 2009 to USD 112 million only.

Trade Balance:

The trade balance for Gaza Strip Governorates registered a deficit in 2010 of USD 381.9 million.

Chapter Two

Concepts and Definitions

Agricultural Holding:

It is an economic unit of agricultural production under single management comprising all kept livestock and all land used totally or partially for agricultural production purposes regardless of title, legal form, or size. Single management may be exercised by an individual or household, jointly by two or more individuals or households, by a clan or tribe, or by a juridical person such as a corporation, cooperative, or government agency. The land of the holdings may consist of one or more parcels located in one or more separate areas, or in one or more territorial or administrative divisions, providing the parcels share the same production means, such as labour, farm buildings, machinery or draught animals.

Agricultural Land:

It refers to the major classes of land use of agricultural holdings. For classification, the "gross area" is surveyed for each class. Agricultural land includes land under scattered farm buildings, yards and their annexes, plus permanently uncultivated land such as uncultivated patches, banks, footpaths, ditches, headlands and shoulders (ECE 1986).

Animal Holding:

The presence of animals controlled by the holder. The holder should have any number of cattle or camels, at least five heads of sheep, goats or pigs, at least 50 poultry birds (layers and broilers), or 50 rabbits or other poultry like turkeys, ducks, fer...etc, or a mixture of them, or at least three beehives controlled by the holder.

Average Room or Bed Occupancy:

It is defined as the total number of rooms or beds occupied and divided by the number of days.

Average Housing Density:

This refers to the average number of persons living per room. This average is calculated by dividing the total number of individuals of a certain category from households by the total number of rooms for that particular category.

Bed Occupancy:

Number of beds booked and paid for. Such beds are considered occupied whether they were actually used or not.

Bed Occupancy Rate:

Days of hospitalization by admitted patients, divided by the number of beds and multiplied by the days of the year.

Building:

The building is defined as any fixed construction that is temporarily or permanently erected on the surface of the earth or water. The building is surrounded by four walls or with at least one completed ceiling.

Employee Compensation:

The total remuneration, in cash or in kind, including social security contributions, payable by an olive press to an employee in return for work done by the latter.

Death:

The permanent disappearance of all evidence of life at any time after live birth has taken place.

Discharges:

Patient discharged from a hospital after having received diagnostic and curative health care, regardless of the case of the discharged person (cured or dead).

Exports:

It refers to the whole commodities (goods and services) that are exported outside the country, conditioned with ownership transcription to another economy, or to free customs regions as a discount from the national economy as a result of a transaction with a non-resident economy.

Establishment:

An enterprise or part of an enterprise in which one group of goods and services is produced (with the possibility of secondary activities).

Government School:

Any educational institution run by the Ministry of Education or any other ministry or governmental instrument.

Government Public Sector:

Includes all institutions of the three branches: legislative, judicial and executive.

Gross Value Added:

Value added is a South concept of production and refers to the generated value of any unit that carries out any productive activity. Gross value added is defined as the value of gross production less the value of intermediate consumption.

Guests:

It refers to visitors staying in hotels and using their facilities. Records of new guests are based on the number of visits regardless of whether it is the same person or not.

Health:

Many definitions exist. As defined by the World Health Organization: "A state of complete physical, mental and social well-being and not merely the absence of disease or infirmity".

Hospital:

An institution whose primary function is to provide services (diagnostic and therapeutic) for a variety of medical conditions, both surgical and non-surgical. Most hospitals also provide some outpatient services, particularly emergency care.

Hotel:

It is defined as an accommodation establishment providing overnight lodging for visitors in a room or unit. It should hold a number of persons exceeding that of an average single family. The establishment must be under one management and provide different facilities and services to visitors.

Housing Unit:

A building or part of a building constructed for one household only, with one or more independent entrances leading to the public road without passing through another housing unit. The unit might not be constructed for living purposes but be found occupied by a household during the enumeration. Likewise, the unit might be utilized for habitation or for

work purposes, or both. Also, it might be closed, vacant or occupied by one or more households during the survey.

Housing Unit Type:

Housing unit type may refer to a villa, house, apartment, independent room, marginal, tent or other.

Household Expenditure:

This refers to the amount of cash spent on the purchase of goods and services for living purposes and the value of goods and service payments, or part of payments, received from an employer, and cash expenditure spent as taxes (non-commercial or non-industrial), gifts, contributions, interest on debts, and other non-consumption items.

Household Consumption:

This refers to the amount of cash spent on the purchase of goods and services for living purposes and the value of goods and service payments, or part of payments, received from an employer, and own-produced goods and food, including consumed quantities during the recording period, and imputed rent.

Imports:

It refers to the whole commodities (goods and services) entering the country by air, land and sea that are used in consumption, convertibility in the manufacturing sector, and re-exportation.

Intermediate Consumption:

It is the value of the goods and services consumed as inputs, used up, or transformed during the production process. It is measured during a specific time period in a way similar to measuring production. Intermediate consumption is estimated by purchase price, which is defined as the producers' price plus transportation and wholesale and retail trade margins. The value of gross intermediate consumption on the level of the total economy is the same whether calculated by purchase or producers' price. However, on a detailed level, the two evaluations vary.

Establishment in Operation:

An establishment which is in operation during the implementation of the establishments census.

Labor Force:

The economically active population (labor force) consisting of all persons aged 15 years and over who were either employed or unemployed.

Livestock:

Refers to all animals kept or reared mainly for agricultural purposes, including cattle, buffaloes, sheep, goats, pigs, horses, mules, asses, camels, poultry, rabbits, bees and other domesticated animals, as well as foxes and minks.

Main Economic Activity:

Is the main work of the enterprise based on the ISIC- rev4 and that contribute the major proportion of the value added, whenever more than one activity exists in the enterprise.

Mean Duration:

Total days of hospitalization divided by the number of discharged patients.

Median Age at First Marriage:

The age that divides individuals into two categories, either married before it or married after it.

Mixed Holding:

Where the holder has plant and animal holdings according to the definition of a plant and animal holding, providing both animal and plant activities and sharing the same means of production, such as labour, farm buildings, machinery or draught animals.

Gaza Strip Region:

North Gaza, Gaza, Deir Al – Balah, Khan Yunis and Rafah,

Number of Guest Nights:

Number of beds booked for hotel guests. Such beds are considered as occupied whether they were actually used or not. It is measured by guest night unit.

Number of Rooms:

It refers to furnished rooms for the use of guests. Such rooms might be single, double, triple, or quadruple. Rooms involving more than four beds were classified under ‘others’ in the questionnaire. A suite usually comprises one bedroom or more, a living room and private toilet facilities.

Number of Persons Engaged:

This includes paid employees, unpaid owners and family members, in addition to all permanent and temporary staff aged 10 years and more.

Olive Press:

An enterprise or part of an enterprise in which one group of goods and services is produced (olive oil, with the possibility of secondary activities).

Outputs:

It is the value of the final products of goods and services produced by a certain olive press which is used by other units for self-consumed or for the purposes of self gross fixed capital formation.

Percentage of Room or Bed Occupancy:

It is defined as the average occupancy of a room or bed, divided by the available rooms or beds and multiplied by one hundred.

Plant Holding:

The presence of cultivated or arable land area for any agricultural crops controlled by the holder. It must not be less than one dunum for an open cultivated area and 0.5 of a dunum for a protected cultivated area.

Population Density:

Number of population per km² of area.

Poverty:

Is often defined as “the absence of the minimum standard of income or resources to meet basic needs” and as “the inability to attain the minimum standard of living.” Two poverty lines have been developed according to actual spending patterns of Palestinian families. The first, termed “deep poverty line” was calculated to reflect a budget for food, clothing and

housing. The second line adds other necessities including health care, education, transportation, personal care, and housekeeping supplies. Since consumption levels better reflect the population's needs, and help to specify the poverty line in Palestine, the monthly consumption level is used rather than the monthly income.

Private Sector:

Includes all institutions owned by individual/s or part of an organization the purpose of which is for profit in most cases.

Public Water Network:

A network of pipes for the purpose of providing clean water to households. It normally belongs to a municipality, council or to a private company and may be for different domestic uses.

Refugee Status:

This status relates to the Palestinians who were forced to leave their land in the Palestinian Territory occupied by Israel in 1948. It applies to their male sons and grandchildren. Every Palestinian falls under one of the following categories:

Registered Refugee: It applies to a registered refugee holding a refugee registration card issued by UNRWA.

Non-Registered Refugee: It applies to an unregistered refugee who does not hold a refugee registration card issued by UNRWA.

Non-Refugee: It applies to any Palestinian not categorized under any of the two aforementioned statuses.

Residence:

Defined in economic terms, the main criterion to determine the residence of an entity is the centre of economic interest. Persons are considered residents of the country where they live for at least one year, excluding students, for reasons of illness, and soldiers.

Room Occupancy:

Number of rooms booked and paid for. Such rooms are considered occupied whether they were actually used or not.

School:

Any educational institution, excluding kindergartens, regardless of the number of students and grade structure.

Secondary School:

Includes schools with secondary stage, or basic and secondary stage.

Sewage Network:

System of collectors, pipelines, conduits and pumps to evacuate wastewater (rainwater, domestic and other wastewater) from any of the location paces generation either to a municipal sewage treatment plant or to a location where wastewater is discharged.

Tenure of Housing Unit:

Tenure status indicates whether the household occupies the housing unit as an owner, rented, or other (including without payment and for work purposes).

Underemployment:

Underemployment exists when a person's employment is inadequate in relation to alternative employment, with account being taken of his/her occupational skills. The underemployed persons are classified into two groups: 1. Visible Underemployment: this refers to an insufficient volume of employment: persons who worked less than 35 hours during the reference week or worked less than the normal hours of work in their occupation were considered as visibly underemployed. 2. Invisible Underemployment: refers to a misapplication of labour resources or fundamental imbalance between labour and other factors of production, such as insufficient income.

Unemployed (According to the ILO Standards):

Unemployed persons are those individuals aged 15 years and over who did not work at all during the reference period, who were not absent from a job, were available for work and actively seeking a job during the reference period by one of the following methods: news paper, registered at employment office, asking friends or relatives, or any other method.

UNRWA School:

Any school run or supervised by UNRWA.

References

1. Palestinian Central Bureau of Statistics. Primary Educational Census Database for the Scholastic Years 2011/2012. Ministry of Education and Higher Education. Ramallah- Palestine.
2. Palestinian Central Bureau of Statistics, 2012. Database of Culture Statistics 2011. Ramallah- Palestine.
3. Palestinian Central Bureau of Statistics, 2012. Health Statistics Database, 2010. Ramallah- Palestine.
4. Ministry of Health, PHIC. Annual Health Report- 2010. Ramallah- Palestine.
5. Palestinian Central Bureau of Statistics, 2012. Population Register, Ministry of Interior, Updated Version up to 8/4/2012. Ramallah- Palestine.
6. Palestinian Central Bureau of Statistics, 2012. Foreign Trade Statistics, Goods and Services, 2010: Main Results. Ramallah – Palestine.
7. Palestinian Central Bureau of Statistics, 2011. Olive Press Survey 2010- Main Results. Ramallah- Palestine.
8. Palestinian Central Bureau of Statistics, 2012. Database of Population, Housing and Establishments Census 2007. Ramallah – Palestine
9. Palestinian Central Bureau of Statistics, 2012. Revised Estimates based on the final results of Population, Housing and Establishments Census 2007. Ramallah-Palestine.
10. Palestinian Central Bureau of Statistics, 2012. Marriage and Divorce Database 2011. Ramallah-Palestine
11. Palestinian Central Bureau of Statistics, 2012. Population, Housing and Establishments Census 2007 and updated up to 2009.
12. Palestinian Central Bureau of Statistics, 2012. Expenditure and Consumption Survey 2010. Ramallah- Palestine.
13. Palestinian Central Bureau of Statistics, 2011. Local Community Survey 2010: Main Findings. Ramallah – Palestine.
14. Palestinian Central Bureau of Statistics, 2011. Land Use Statistics Tables in the Palestinian Territory, 2008. Ramallah - Palestine.
15. Palestinian Central Bureau of Statistics, 2011. Agriculture Census 2010: Final Results. Ramallah- Palestine.
16. Palestinian Central Bureau of Statistics, 2012. Hotel Activities in Palestinian Territory, (Annual Bulletins, 2011). Ramallah - Palestine.

17. Palestinian Central Bureau of Statistics, 2012. Palestinian Labor Force Survey: Annual Report, 2011. Ramallah – Palestine.
18. Palestinian Central Bureau of Statistics, 2011. Transportation and Communication Statistics in the Palestinian Territory: Annual Report 2010. Ramallah-Palestine.
19. Palestinian Central Bureau of Statistics, 2011. Housing Conditions Survey: main Result. Ramallah-Palestine.