



2011

2012 /

2006

.2012 – 1433 ©

:

.2011

.2012

:

– **1647** . .

(970/972) 2 2982700 :

(970/972) 2 2982710 :

1800300300 :

diwan@pcbs.gov.ps :

<http://www.pcbs.gov.ps> :



.

2011

(PNA)

2012

(CFG)

.(SDC)

.

(CFG)

•

•

•

•

•

•

•

.<http://www.pcbs.gov.ps>

.

(-)

19	:
19	1.1
26	2.1
32	3.1
37	:
47	
49	

51	2012	:1
52		:2
	2007	
53		:3
	2011-2010	
54		:4
	2011-2010	
55		:5
	2011	
56	1000	:6
	2010	
57	2010	:7
58	(15)	:8
	2011	
59		:9
	2010	
60		:10
	2010	
61		:11
	2012/2011	
62		:12
	2012/2011	
63		:13
	2012/2011	

64	(15)	:14
	2011	
65	(15)	:15
	2011	
66	(15)	:16
	2011	
67	2011	:17
68	2011	:18
69		:19
	2010/2009	
70	2010/2009	:20
71		:21
	2010/10/01	
72	2011	:22
73	2010	:23
74	2010	:24
75	2010	:25
76	2010	:26
77	2011	:27
78		:28
	2010	
79		:29
	2010	
80		:30
	2010	
81		:31
	2010	

82			:32
		2010	
83	2011		:33
84			:34
		2010	
85			:35
		2010	
86			:36
		2010	
87	2010		:37
88	-		:38
		2010	
89	-		:39
		2010	

2011

2012

1.1

:

2012

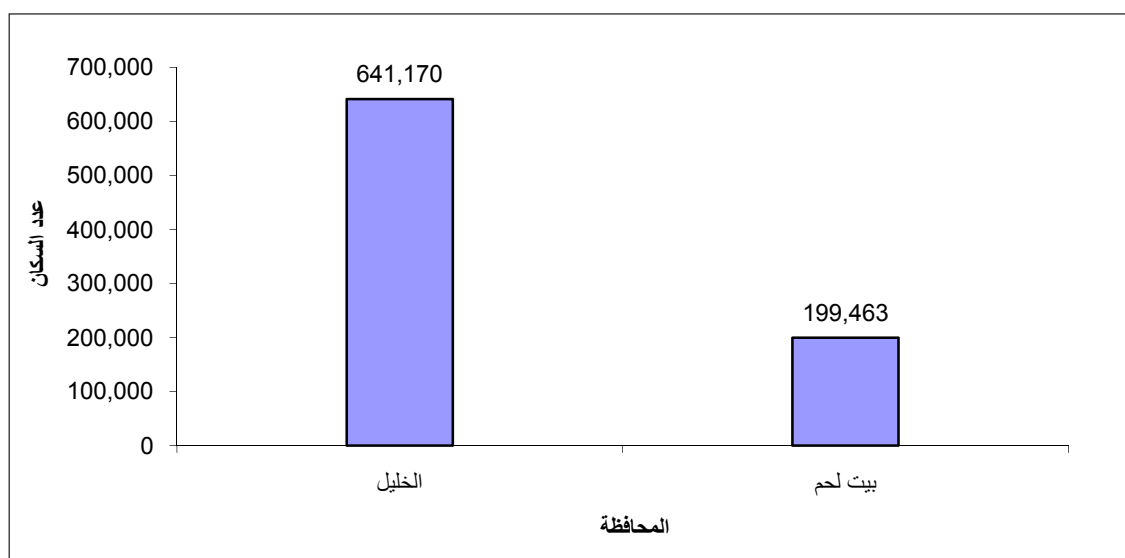
841

%19.6

%14.9

641

2012



:

%27.4

2007

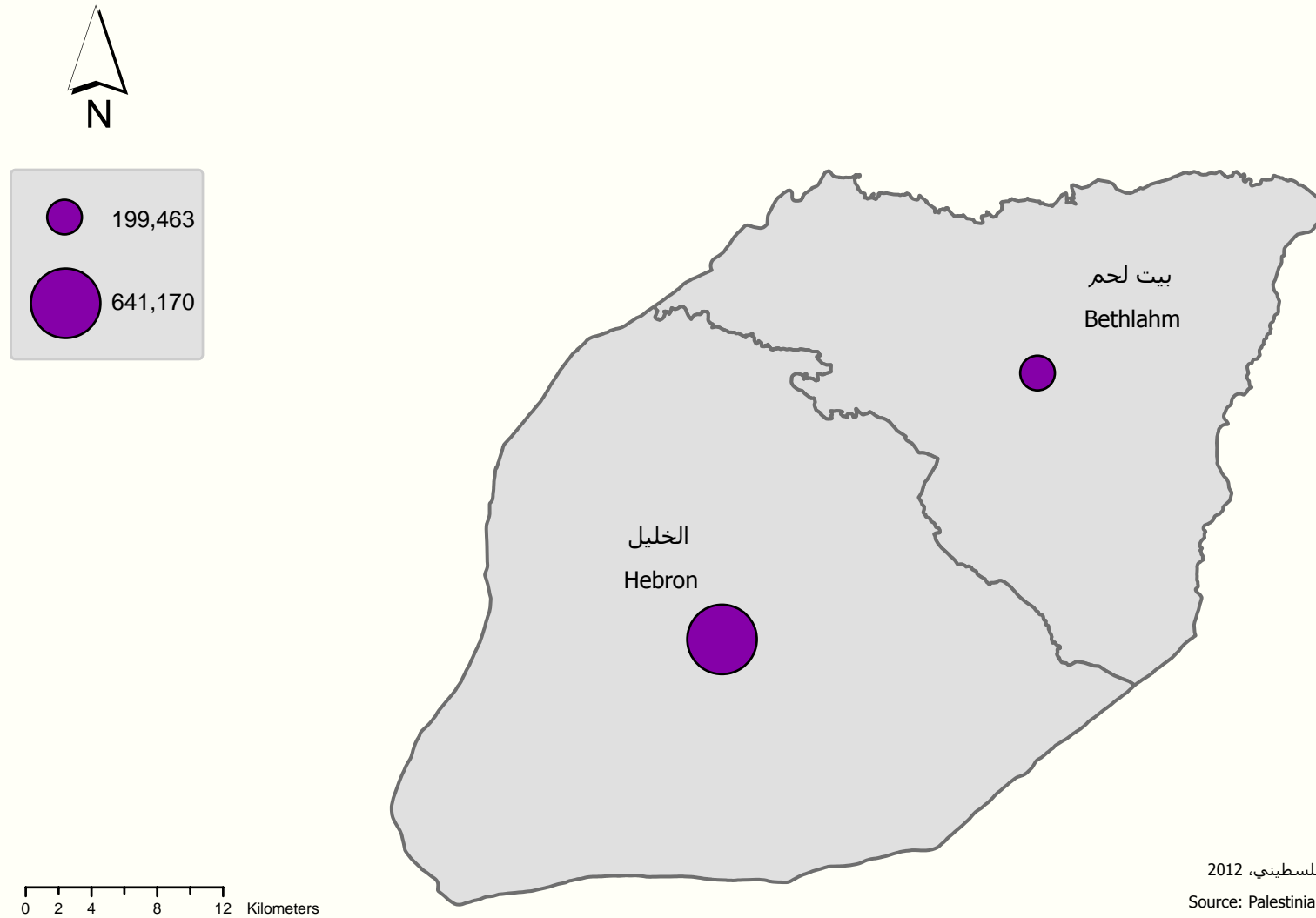
144

624

%20.4

%17.9

عدد السكان المقدر في محافظات جنوب الضفة الغربية منتصف العام، 2012
Estimated Population in the West Bank Southern Governorates at Mid, 2012

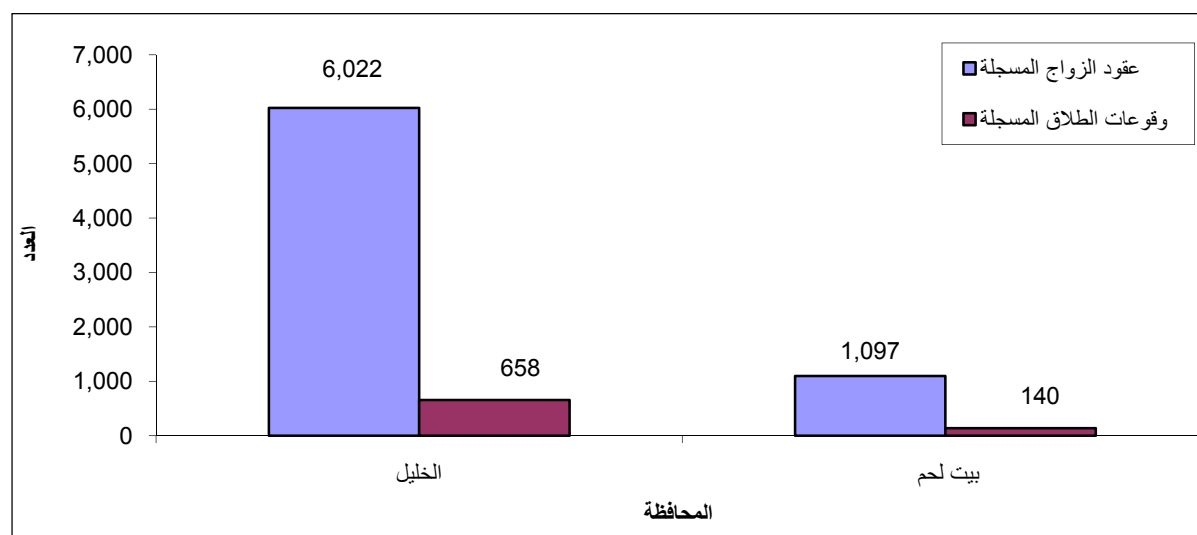


المصدر: الجهاز المركزي للإحصاء الفلسطيني، 2012
Source: Palestinian Central Bureau of Statistics, 2012



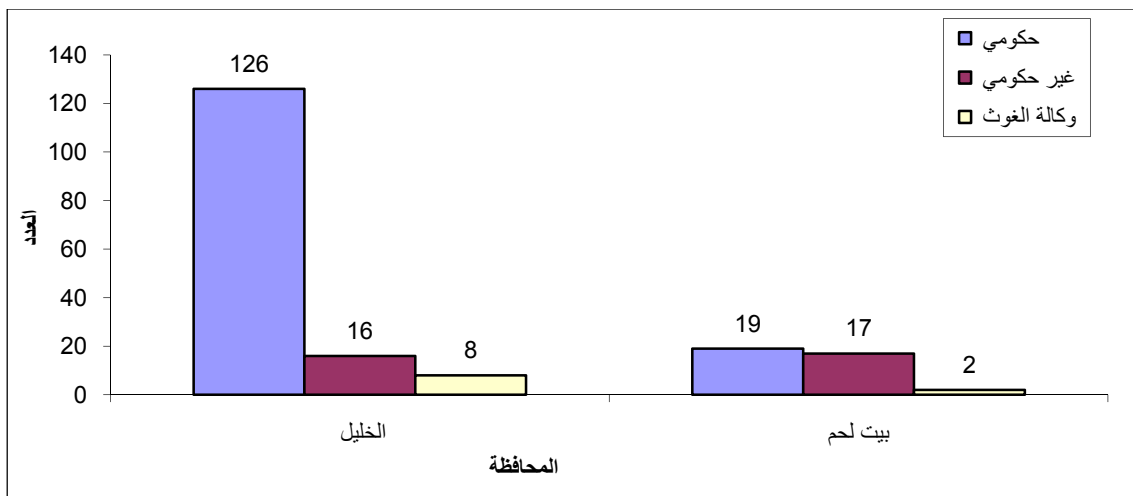
7,119 2011 :
 19.6%
 1000 8.7 2011
 1000 9.7)
 .(1000 5.7) ()
 19.8 24.7 2011
 24.3 26.2
 . 19.6 20.8
 2011
 . %13.0 798
 1000 1.5 2011
 1.1
 1000 0.7 1000

2011



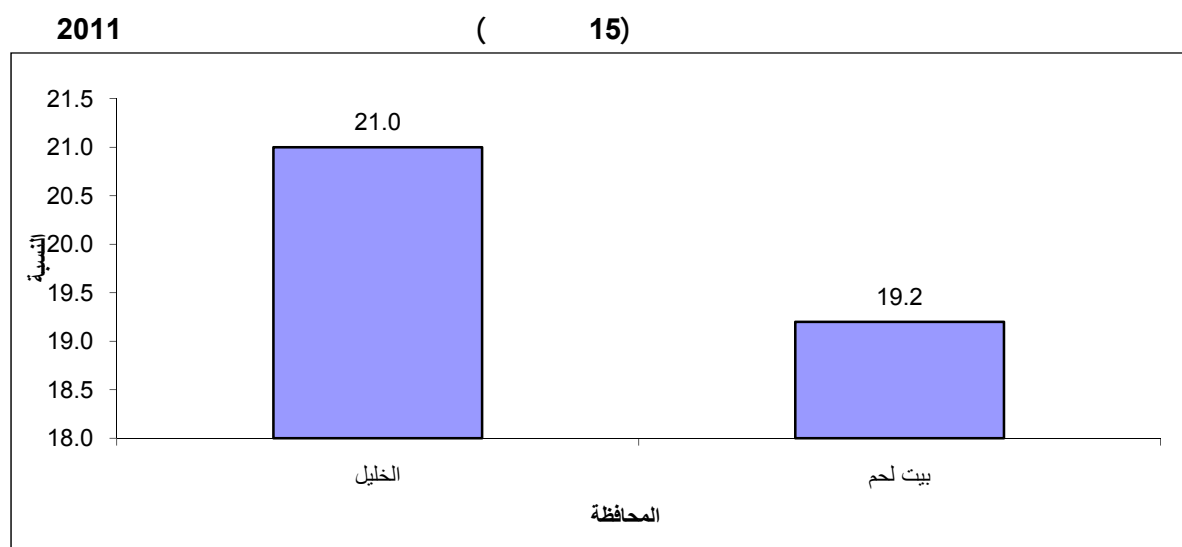
:
) 24,643 2011
 . 12,049 12,594 (%38.2
 %29.0 1,857
 . 841 1,016
 :
 5 17 2010
 1.4 1,099
 3.0
 . 1000 0.9 1000
 188 2010
 33 145
 10

2010



(15) 2011

. %47.1
 %73.5 %19.8
 %10.4 %79.4



%19.5 %24.7

2011 %20.6

:

:

2010 % 29.7

%18.3

:

792.7

805.3

:

2,019 644

2012/2011

28 (155 370)

525

.(21 70) 91 ()

229,386

95,929

115,984

113,402

2012/2011

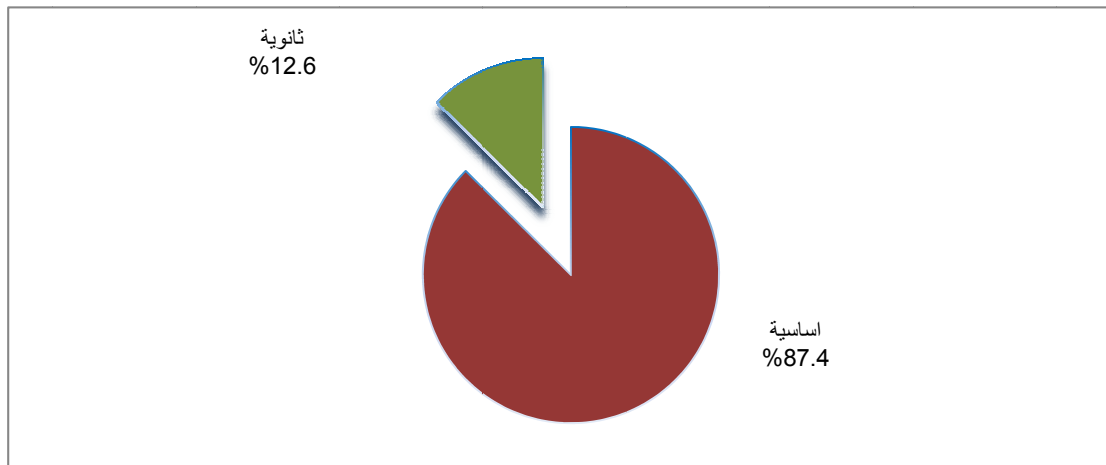
98,635

12,262

5,211

8,021

9,328

2012/2011

2011 (15)
 .%12.3 %9.9

2011 ()
 .%9.9 %9.9 %14.7 %10.1
 %5.0 %7.5 %2.7 (15)

1,832 706

.2011

4 161 165
 10 7 531 2011 550

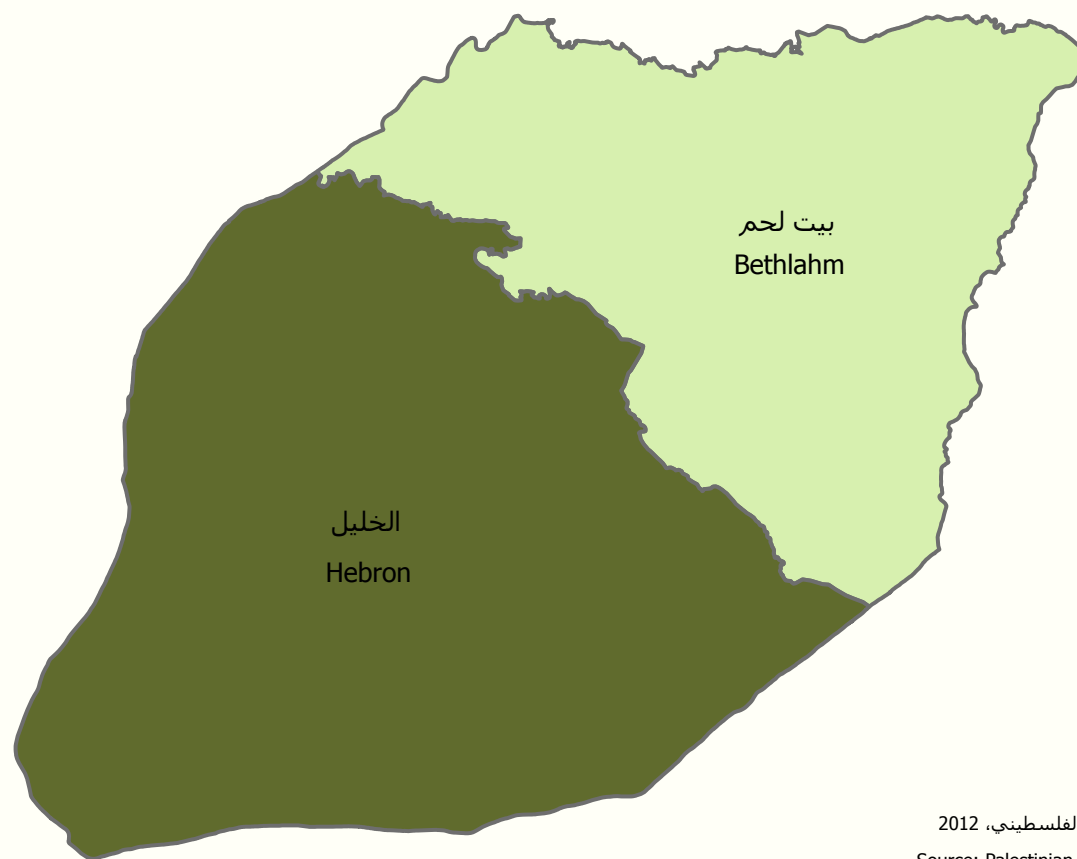
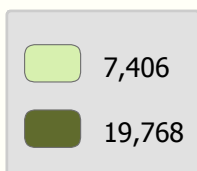
2.1

:

%29.3 2010 ² 1,656
² 191.31
 %11.6 %21.7
 .2010/2009

	%29.9	27,174			
	17,862				
5,288				%65.7	
			%19.5		
			%14.8	4,024	
				.2010/2009	
8,913	2010/10/01				
	180,539		%36.7		
75,351				%35.7	
				%36.4	
	33	2011			
				%13.0	
	%6.4			1,243.7	
				.2011	
	%9.6				
			114	2011	
0.6	2011				
		%9.7			

عدد الحيازات الزراعية في محافظات جنوب الضفة الغربية، 2010/2009
Agricultural Holdings in the West Bank Southern Governorates, 2009/2010



0 2 4 8 12 Kilometers

المصدر: الجهاز المركزي للإحصاء الفلسطيني، 2012
Source: Palestinian Central Bureau of Statistics, 2012



$$\vdots$$

%59.7

%39.7

2010

%83.7

$$\vdots$$

()

∴ **.1**

7

86

.2010

40

: .2

40

35

41

7

.2010

13

: .3

2010

15

4

69

40

9

•

4

12

•

()

4

120

6

.2010

:

2011 28
 4,341 2,050
 569,641 225,164
 %30.8 %15.4

3.1

:

2010 22,110
 10,983 50,748 61,731

:

2010 32,935
 %71.2 %27.1

%27.9 5,600

%79.3

%8.7 () %10.0

%2.0

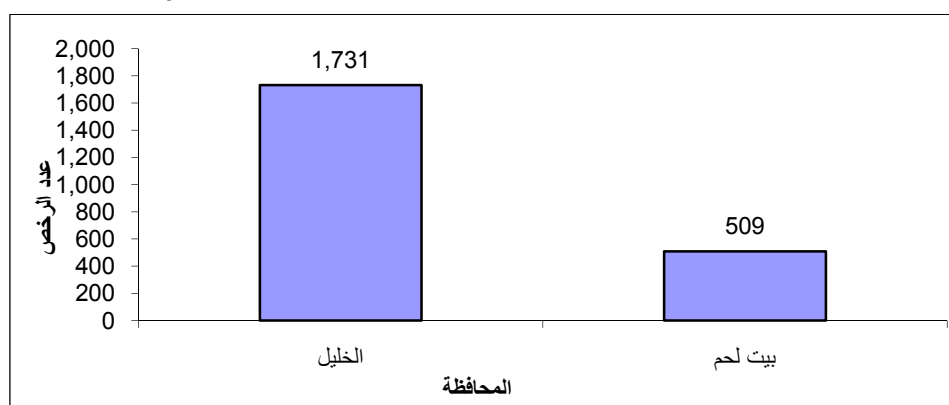
:

2011

686.3 1,076.6 2,240
 390.3

2011

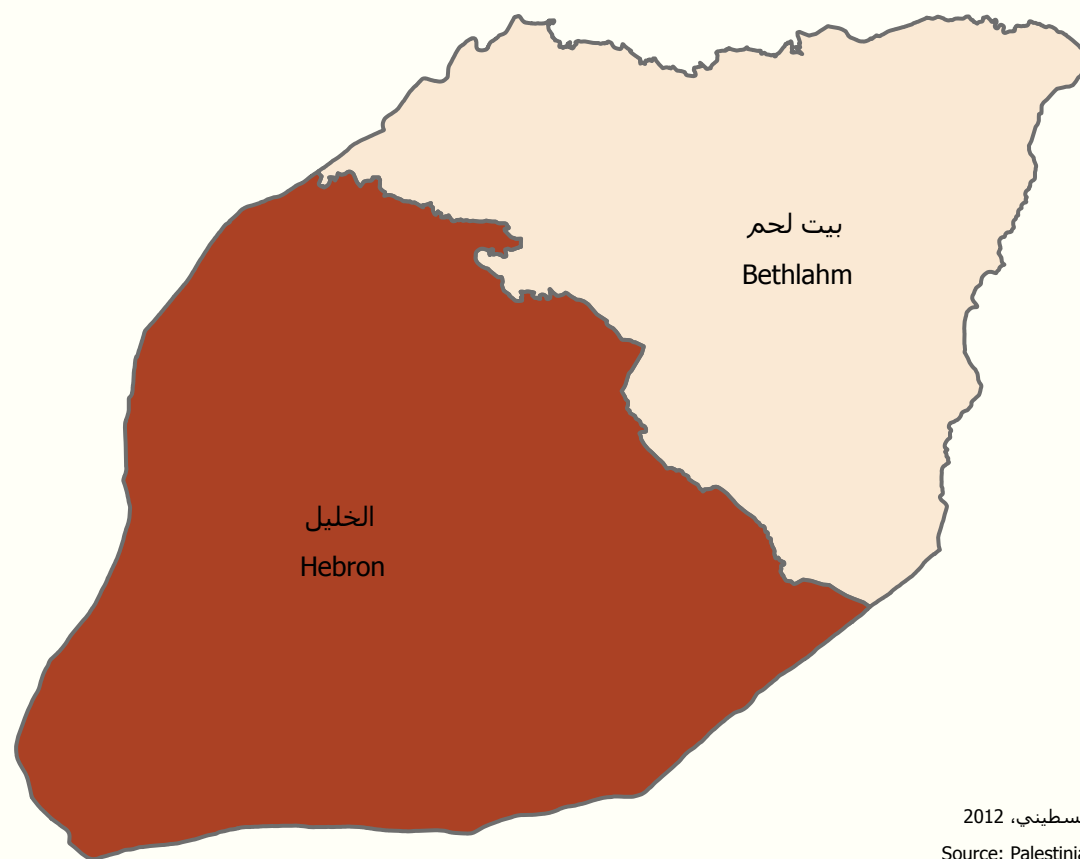
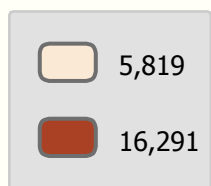
*



*

عدد المنشآت العاملة في القطاع الخاص والقطاع الأهلي والشركات الحكومية في محافظات جنوب الضفة الغربية، 2010

Number of Establishments in Operation in the Private Sector, Non Governmental Organization Sector
and Government Companies in the West Bank Southern Governorates, 2010



0 2 4 8 12 Kilometers

المصدر: الجهاز المركزي للإحصاء الفلسطيني، 2012
Source: Palestinian Central Bureau of Statistics, 2012



$$\vdots$$
$$\vdots$$

●

%1.0

2009

2010

990.1

%32.2

319.3

%21.1

الغربية 208.7

%0.5

4.8

:

●

2009

%3.2

2010

238.9

%49.5

118.2

5.1

%2.1

318

%0.13

$$\vdots$$

751.2

.2010

.()

:()
(15)

:

:

:

1948

-:

()

()

:

:

:

:

:

(50)

()

(5)

(50) ()

(3)

:

...

.

:

.

:

:

: .1

.() ()

: .2

: .3

: .4

:

(0.5) (1)

:

.

:

24

.

:

:

)

(

.

:

.

:

.

:

.

:

.

:

.

:

.

:

.

.()

.

:

()

.

:

(35)

:

:

:

()² (4)
()

:

(- -)

:

()

:

:

)

(" ") .(") .

("

.)

(

:

.

.

:

.

:

.

:

:

.

:

.

:

.

:

()

:

:

:

:

:()

()

:

:

:

:

:

:

.

:

.

:

.()

:

.

:

)

(

.2010

:

.

:

.

:

.

:()

() ()

.

:

.

.

:

.(...)

:

:()

:

	.2012	.1
	-2012/2011	
.2011	.2012	.2
.2012/4/8	.2012	.3
	-	
-	2012	.4
	-	:2010
:2010	.2011	.5
2010	.2011	.6
	-	
	.2011	.7
	-	.2011
-	2010 -	.2011
	-	
.2011	.2012	.9
	.2012	.10
	-	.2007
.2011	.2012	.11
-	.2011	.2012
-	.2011	-
.2010	.2012	.14
	-	
.2011	.2012	.15
	-	

		2011		:PCBS
		.2012		.16
		.	-	.2007
:		.2011		.17
		.	-	.2010
2007		.2012		.18
		.	-	.2010
-	.	.2010	.2011	.19
				.

Tables

2012

:1

Table 1: Estimated Population in the West Bank Southern Governorates by Sex, Mid-2012

Governorate /Region	Females	Males	Total	المحافظة/المنطقة
West Bank	1,303,606	1,345,414	2,649,020	
South of West Bank	412,111	428,522	840,633	
Hebron	314,174	326,996	641,170	
Bethlehem	97,937	101,526	199,463	

2007

:2

Table 2: Palestinian Population in the West Bank Southern Governorates by Refugee Status End-2007

Governorate/Region	Refugee Status				المحافظة/المنطقة
	Total	Not Stated	Not-Refugee	Refugee	
West Bank	2,279,969	55,351	1,600,551	624,067	
South of West Bank	707,404	9,045	554,111	144,248	
Hebron	538,002	5,545	436,339	96,118	
Bethlehem	169,402	3,500	117,772	48,130	

2011-2010 :3
Table 3: Registered Marriages and Divorces in the West Bank Southern Governorates, 2010-2011

Governorate\Region	Registered Divorces		Registered Marriages		المحافظة/المنطقة
	2011	2010	2011	2010	
West Bank	3,392	3,273	20,165	20,185	
South of West Bank	798	786	7,119	6,469	
Hebron	658	628	6,022	5,500	
Bethlehem	140	158	1,097	969	

2011-2010

:4

**Table 4: Median Age at First Marriage in the West Bank Southern Governorates
by Sex, 2010- 2011**

Governorate\Region	Females		Males		المحافظة/المنطقة
	2011	2010	2011	2010	
West Bank	20.2	20.1	25.3	25.4	
South of West Bank	19.8	19.8	24.7	24.6	
Hebron	19.6	19.6	24.3	24.4	
Bethlehem	20.8	20.9	26.2	26.4	

2011

:5

Table 5: Registered Live Births and Deaths Registered in the West Bank Southern Governorates by Sex, 2011

Governorate\Region	Deaths			Births			المحافظة/المنطقة
	Total	Females	Males	Total	Females	Males	
West Bank	6,398	3,005	3,393	64,519	31,434	33,085	
South of West Bank	1,857	841	1,016	24,643	12,049	12,594	
Hebron	1,321	609	712	19,359	9,510	9,849	
Bethlehem	536	232	304	5,284	2,539	2,745	

2010

1000

:6

Table 6: Beds Per 1000 Inhabitant and Number of Hospitals and Beds in the West Bank Southern Governorates, 2010

Governorate\Region	Number of Beds	Hospitals	1000 Beds Per1000Inhabitant	/
West Bank	3,063	51	1.2	
South of West Bank	1,099	17	1.4	
Hebron	532	9	0.9	
Bethlehem	567	8	3.0	

2010 :7
Table 7: Hospital Activities in the West Bank Southern Governorates, 2010

Activites	Governorate		الفعاليات
	Bethlehem	Hebron	
Governmental Hospitals	2	3	
Non-Governmental Hospitals	6	6	
Grand Total of Discharges	26,624	64,557	
Grand Total of Beds Occupancy Rate	65.8	80.6	
Mean of Duration (day)	5.1	2.4	()

جدول 8: التوزيع النسبي للأفراد (15 سنة فأكثر) في محافظات جنوب الضفة الغربية حسب الجنس والعلاقة بقوة العمل، 2011

Table 8: Percentage Distribution of Population (15 Years and Above) in the West Bank Southern Governorates by Sex and Labor Force Status, 2011

Labor Force Status and Sex	Wset Bank	South of West Bank	Governorate		العلاقة بقوة العمل والجنس
			Bethlehem	Hebron	
Both Sexes					كلا الجنسين
In Labor Force	45.5	47.1	48.8	46.6	داخل القوى العاملة
Outside Labor Force	54.5	52.9	51.2	53.4	خارج القوى العاملة
Total	100	100	100	100	المجموع
Full Employment	74.4	69.0	64.1	70.7	عمالة تامة
Underemployment	8.3	10.4	16.7	8.3	عمالة محدودة
Unemployment	17.3	20.6	19.2	21.0	بطالة
Total	100	100	100	100	المجموع
Males					ذكور
In Labor Force	71.4	73.5	72.9	73.7	داخل القوى العاملة
Outside Labor Force	28.6	26.5	27.1	26.3	خارج القوى العاملة
Total	100	100	100	100	المجموع
Full Employment	74.4	68.1	60.8	70.4	عمالة تامة
Underemployment	9.7	12.4	20.8	9.7	عمالة محدودة
Unemployment	15.9	19.5	18.4	19.9	بطالة
Total	100	100	100	100	المجموع
Females					إناث
In Labor Force	19.0	19.8	24.7	18.2	داخل القوى العاملة
Outside Labor Force	81.0	80.2	75.3	81.8	خارج القوى العاملة
Total	100	100	100	100	المجموع
Full Employment	74.3	72.3	74.0	71.6	عمالة تامة
Underemployment	3.1	3.0	4.5	2.3	عمالة محدودة
Unemployment	22.6	24.7	21.5	26.1	بطالة
Total	100	100	100	100	المجموع

2010

:9

Table 9: Average Monthly Household Expenditure and Consumption in Dinar (JD) in the West Bank Southern Governorates, 2010

Indicators	Governorate		المؤشرات
	بيت لحم Bethlehem	Hebron	
Food cash expenditure	322.2	318.7	
Total Food Consumption	331.0	330.5	
Non-food cash expenditure	426.5	435.6	
Total Non-Food Consumption	546.0	516.2	
Total Consumption	877.0	846.7	
Total Cash Expenditure	792.7	805.3	

2010 :10
**Table 10: Poverty Rates According to Actual Monthly Consumption Patterns of
 Individuals in the West Bank Southern Governorates, 2010**

Governorate/Region	Poverty Rates				/
	Deep Poverty	Poverty Severity	Poverty Gap	Poverty	
West Bank	8.8	1.4	4.1	18.3	
South of West Bank	13.8	2.6	7.0	29.7	
Hebron	16.2	3.1	8.1	32.5	
Bethlehem	6.7	0.8	3.6	21.3	

2012/2011

:11

Table 11: Schools and Students in the West Bank Southern Governorates by Stage and Supervising Authority, 2011/2012

Supervising Authority/ Governorate	Total		Level				الجهة المشرفة المحافظة/
			Secondary		Basic		
	Number of Students	Number of Schools	Number of Students	Number of Schools	Number of Students	Number of Schools	
South of West Bank							
Government	194,564	525	27,548	155	167,016	370	
UNRWA	14,539	28	-	-	14,539	28	
Private	20,283	91	1,346	21	18,937	70	
Total	229,386	644	28,894	176	200,492	468	
Hebron							
Government	156,680	402	21,455	105	135,225	297	
UNRWA	10,526	20	-	-	10,526	20	
Private	#VALUE!	52	233	2	9,932	50	
Total	177,371	474	21,688	107	155,683	367	
Bethlehem							
Government	37,884	123	6,093	50	31,791	73	
UNRWA	4,013	8	-	-	4,013	8	
Private	10,118	39	1,113	19	9,005	20	
Total	52,015	170	7,206	69	44,809	101	

2012/2011

:12

Table 12: Average Number of Students Per Class in the West Bank Southern Governorates by Level and Supervising Authority, 2011/2012

Level/Governorate	Supervising Authority			Grand Average	
	Private	UNRWA	Government		
Basic	22.8	33.8	30.0	29.3	
Hebron	23.3	34.3	30.5	30.1	
Bethlehem	22.2	32.6	28.0	27.0	
Secondary	17.9	-	27.1	26.4	
Hebron	29.1	-	28.1	28.1	
Bethlehem	16.6	-	23.9	22.4	

2012/2011

:13

Table 13: Average Number of Students Per Teacher in the West Bank Southern Governorates by Supervising Authority, 2011/2012

Governorate/Region	Supervising Authority			/
	Private	UNRWA	Government	
West Bank	15.2	27.5	21.4	
South of West Bank	16.2	25.9	21.5	
Hebron	18.2	26.5	22.1	
Bethlehem	14.6	24.5	19.5	

2011

(15)

:14

Table 14: Percentage Distribution of Palestinian Population (15 Years and Above) in the West Bank Southern Governorates by Educational Attainment, 2011

Educational Attainment	South of West Bank	Governorate		
		Bethlehem	Hebron	
Illiterate	5.0	4.6	5.2	
Can Read and Write	7.3	7.5	7.2	
Elementary	16.2	14.3	16.8	
Preparatory	37.5	34.2	38.6	
Secondary	19.5	22.5	18.5	
Associate Diploma	4.6	4.3	4.7	
Bachelor and Above	9.9	12.6	9.0	
Total	100	100	100	

(15)

:15

2011

Table 15: Percentage Distribution of Palestinian Population (15 Years and Above) in the West Bank Southern Governorates by Educational Attainment and Sex, 2011

Educational Attainment	South of West Bank جنوب الضفة الغربية			West Bank			الحالة التعليمية
	Females	Males	Both sex	Females	Males	Both sex	
Illiterate	7.5	2.7	5.0	7.8	2.1	4.9	
Can Read and Write	7.2	7.4	7.3	7.2	6.4	6.8	
Elementary	14.9	17.4	16.2	15.2	17.7	16.5	
Preparatory	36.6	38.3	37.5	35.5	39.3	37.5	
Secondary	19.8	19.2	19.5	19.5	19.2	19.3	
Associated Diploma	4.2	5.1	4.6	4.4	4.6	4.5	
Hebron	9.9	9.9	9.9	10.4	10.7	10.5	
Total	100	100	100	100	100	100	

(15)

:16

2011

Table 16: Literacy Rates of Palestinian Population (15 Years and Above) in the West Bank Southern Governorates by Sex and Age Group, 2011

Sex and Age Groups	West Bank	South of West Bank	Governorate		الجنس والفئات العمرية
			Bethlehem	Hebron	
Both Sexes					
15-19	99.6	99.5	100.0	99.3	19-15
20-24	99.4	99.4	99.2	99.4	24-20
25-34	99.2	99.1	98.7	99.3	34-25
35-44	98.4	98.2	99.1	97.9	44-35
45+	81.7	79.7	84.0	77.9	+45
Total	95.1	95.0	95.4	94.8	
Males					
15-19	99.4	99.1	100.0	98.8	19-15
20-24	99.4	99.1	98.8	99.1	24-20
25-34	99.1	99.1	98.0	99.4	34-25
35-44	99.0	98.9	99.5	98.7	44-35
45+	93.4	90.7	94.5	89.3	+45
Total	97.9	97.3	97.9	97.1	
Females					
15-19	99.7	99.9	100.0	99.8	19-15
20-24	99.4	99.7	99.5	99.7	24-20
25-34	99.2	99.2	99.5	99.1	34-25
35-44	97.7	97.4	98.7	97.0	44-35
45+	70.5	68.4	74.3	65.8	+45
Total	92.2	92.5	93.0	92.4	

2011

:17

Table 17: Mosques in the West Bank Southern Governorates, 2011

Governorate/Region	Number	/
West Bank	1,832	
South of West Bank	706	
Hebron	556	
Bethlehem	150	

2011

:18

Table 18: Cultural Institutions In Operation in the West Bank Southern Governorates, 2011

Cultural Institutions	West Bank	South of West Bank	Governorate		المؤسسات الثقافية
			Bethlehem	Hebron	
Cultural Centers	531	161	73	88	
Theaters	7	-	-	-	
Museums	10	4	3	1	
Cinema	2	-	-	-	
Total	550	165	76	89	

:19

2010/2009

Table 19: Total Area, Cultivated Land Area and Percentage of Cultivated Land Area in the West Bank Southern Governorates, 2009/2010Area: km²المساحة: كم²

Governorate/Region	Percentage of Cultivated Land Area from Total Area	Cultivated Land Area	Total Area	/
West Bank	15.6	881.9	5,655	
South of West Bank	11.6	191.3	1,656	
Hebron	15.8	157.5	997	
Bethlehem	5.1	33.8	659	

2010/2009

:20

Table 20: Agricultural Holdings in the West Bank Southern Governorates by Type of Holding, 2009/2010

Governorate/Region	Total	Type of Holding			/
		مختلطة Mixed	حيوانية Animal	Plant	
West Bank	90,908	14,762	10,879	65,267	
South of West Bank	27,174	5,288	4,024	17,862	
Hebron	19,768	3,995	2,826	12,947	
Bethlehem	7,406	1,293	1,198	4,915	

2010/10/01

:21

Table 21: Livestock in the West Bank Southern Governorates by Type, as on 01/10/2010

Governorate/Region	Type of Livestock			/
	Goats	Sheeps	Cows	
West Bank	207,214	505,833	24,290	
South of West Bank	75,351	180,539	8,913	
Hebron	49,436	146,220	8,446	
Bethlehem	25,915	34,319	467	

2011

:22

Table 22: Main Economic Indicators for Olive Presses in the West Bank Southern Governorates, 2011

Quantity in Metric Ton and Value in USD 1000

Indicators	West Bank	South of West Bank	Governorate		
			Bethlehem	Hebron	
Total Operating Olive Presses	254	33	8	25	
No. of Olive Presses Temporarily Closed	27	3	-	3	
Quantity of Olive Pressed	85,003	6,679.9	2,298.3	4,381.6	
Quantity of Oil Extracted	19,307	1,243.7	449.3	794.5	
Number of Employed Persons	1,192	114	26	88	
No. of Unpaid Employees	376	47	8	39	
No. of Paid Employees	816	67	18	49	
Compensation of Employees	887	15.0	17.9	57.5	
Olive Presses Output	8,795	959.2	404.6	554.6	
Intermediate Consumption	2,247	326.5	106.9	219.6	
Gross Value Added	6,548	632.7	297.7	335.0	
Gross Fixed Capital Formation	2,386	241.2	90.2	151.1	

2010

:23

Table 23: Percentage Distribution of Households in the West Bank Southern Governorates by Type of Housing Unit, 2010

Governorate/Region	Type of Housing Unit				/
	Total	* Other*	Apartment	/ Villa/House	
West Bank	100	1.1	50.2	48.7	
South of West Bank	100	0.6	39.7	59.7	
Hebron	100	0.8	44.5	54.7	
Bethlehem	100	0.0	26.2	73.8	

*Other: Includes Independent Room, or Tent, or marginal

* أخرى: تشمل غرفة مستقلة أو خيمة أو براكية

2010

:24

Table 24: Percentage Distribution of Households in the West Bank Southern Governorates by Tenure of Housing Unit, 2010

Governorate/Region	Tenure of Housing Unit				/
	Total	* Other*	Rented	Owned	
West Bank	100	7.7	8.7	83.6	
South of West Bank	100	12.4	3.9	83.7	
Hebron	100	14.7	4.2	81.1	
Bethlehem	100	5.9	3.1	91.0	

* Other includes From Work and Without Payment

*

2010

:25

Table 25: Percentage Distribution of Households in the West Bank Southern Governorates by Number of Rooms per Housing Unit, 2010

Governorate/Region	Average Number of Rooms	Number of Rooms						/
		المجموع Total	+5	4	3	2	1	
West Bank	3.6	100	20.2	31.8	31.5	13.3	3.2	
South of West Bank	3.8	100	26.5	32.3	27.1	11.2	2.9	
Hebron	3.9	100	29.0	31.2	26.3	10.5	3.0	
Bethlehem	3.7	100	19.5	35.5	29.4	13.2	2.4	

*Other: Includes Independent Room or Tent or Marginal

:

2010

:26

Table 26: Percentage Distribution of Households in the West Bank Southern Governorates by Housing Density, 2010

Governorate/Region	Average of Housing Density	Housing Density					/
		Total	+3.00	2.99-2.00	1.99-1.00	أقل من 1	
West Bank	1.5	100	8.1	25.1	51.4	15.4	
South of West Bank	1.5	100	8.9	26.9	47.8	16.4	
Hebron	1.6	100	10.1	28.2	47.0	14.7	
Bethlehem	1.4	100	5.7	23.2	50.0	21.1	

2011

:27

Table 27: Building Licenses Issued in the West Bank Southern Governorates by Utilization, 2011

Governorate/Region	مساحة الوحدات السكنية الجديدة المرخصة (1000 م ²) Area of Licensed New Dwellings (1000 m ²)	عدد الوحدات السكنية الجديدة المرخصة Number of Licensed New Dwellings	المساحات المرخصة (الف م ²) Licensed Area (1000 m ²)*	عدد الرخص الصادرة Number of Licenses	المحافظة/المنطقة
South of West Bank					جنوب الضفة الغربية
Residential Buildings	461.7	2,250	868.5	2,042	مبنى سكني
Non-Res. Buildings	35.3	83	208.1	198	مبنى غير سكني
Boundary walls	-	-	3.2	30	أسوار
Hebron					الخليل
Residential Buildings	353.6	1,660	692.8	1,612	مبنى سكني
Non-Res. Buildings	30.3	69	141.2	119	مبنى غير سكني
Boundary walls	-	-	1.3	11	أسوار
Bethlehem					بيت لحم
Residential Buildings	108.1	590	175.7	430	مبنى سكني
Non-Res. Buildings	5.0	14	66.9	79	مبنى غير سكني
Boundary walls	-	-	1.9	19	أسوار

*For boundary walls it refers to length in (1000 m)

*بالنسبة للأسوار تمثل الطول بالآلاف متر طولي

2010

:28

Table 28: Localities in the West Bank Southern Governorates by Water Provider Through a Public Network, 2010

Governorate /Region	المجموع Total	لا يوجد شبكة مياه No Water Network	Service Provider of Water Through the Public Network				/
			أخرى Other	هيئة محلية أخرى Another Local Authority	مصلحة مياه القدس Jerusalem Water Undertaking	الهيئة المحلية Local Authority	
West Bank	524	109	24	48	64	279	الضفة الغربية
South of West Bank	137	40	2	7	2	86	جنوب الضفة الغربية
Bethlehem	45	-	1	-	2	42	بيت لحم
Hebron	92	40	1	7	-	44	الخليل

2010

:29

Table 29: Localities in the West Bank Southern Governorates by Alternative Water Sources, 2010

Governorate /Region	المجموع Total	Alternative Main Water Source for the Network*					/
		لا يوجد بديل No Alternativ	أخرى Other	ينابيع Springs	آبار جمع مياه الأمطار Rain Water Collection	آبار ارتوازية Artesian Wells	
West Bank	524	43	20	38	242	181	الضفة الغربية
South of West Bank	137	10	6	10	62	49	جنوب الضفة الغربية
Bethlehem	45	7	3	2	28	5	بيت لحم
Hebron	92	3	3	8	34	44	الخليل

*: The Alternative Water Source for localities is in the absence of water or network does not cover the localities needs.

*:

2010

:30

Table 30: Localities in the West Bank Southern Governorates by Electricity Provider Through a Public Network, 2010

Governorate/Region	المجموع Total	لا يوجد شبكة كهرباء No Electricity Network	Service Provider of Water Through the Public Network					/
			أخرى Others	هيئة محلية أخرى Another Local Authority	شركة كهرباء الجنوب Southern Electricity Co.	شركة كهرباء محافظة القدس Jerusalem District Electricity Co.	الهيئة المحلية Local Authority	
West Bank	524	28	21	18	35	166	256	الضفة الغربية
South of West Bank	137	13	7	1	35	41	40	جنوب الضفة الغربية
Bethlehem	45	2	-	-	-	39	4	بيت لحم
Hebron	92	11	7	1	35	2	36	الخليل

2010

:31

Table 31: Localities in the West Bank Southern Governorates by the Provider of Solid Waste Collection Service, 2010

Governorate /Region	المجموع Total	There is No Solid Waste Collection	Doer of Waste Collection					/
			Others	Anthoer Local Authority	UNRWA	Private Contractor	Local Authority	
West Bank	524	79	15	50	20	26	334	الضفة الغربية
South of West Bank	137	40	9	15	4	-	69	جنوب الضفة الغربية
Bethlehem	45	5	-	7	3	-	30	بيت لحم
Hebron	92	35	9	8	1	-	39	الخليل

2010

:32

Table 32: Localities in the West Bank Southern Governorates by Wastewater Disposal Method, 2010

Governorate /Region	المجموع Total	غير مبيّن Not Stated	Wastewater Alternative Disposal Method* *				الاتصال بشبكة صرف صحي Wastewater Network Connection	/
			أكثر من طريقة More Than One Method	شبكة مجاري مكشوفة Open Channels Network	مجاري مكشوفة بدون شبكة Open Channels Without Network	حفرة امتصاصية وصماء Porous and Tight Cesspits		
West Bank	524	20	33	1	5	465	72	الضفة الغربية
South of West Bank	137	6	6	1	4	120	12	جنوب الضفة الغربية
Bethlehem	45	2	1	-	-	42	8	بيت لحم
Hebron	92	4	5	1	4	78	4	الخليل

*: The Alternative method used in the localities for the disposal of wastewater in the absence of a sewerage system or sewerage network does not cover 100% of users (residential, commercial, or industrial) in the localities.

*:

. () %100

2011

:33

Table 33: Main Indicators for Hotel Activities in the West Bank Southern Governorates, 2011

Governorate/Region	Beds Occupancy		No. of Nights	No. of Guests	Average No. of Beds	Average No. of Rooms	No. of Hotels	المحافظة/المنطقة
	%	Average معدل						
West Bank	31.9	3,412	1,245,509	507,372	10,703	4,992	91	
South of West Bank	36.0	1,561	569,641	225,164	4,341	2,050	28	

:34

2010

Table 34: Establishments in Operation and Employed Persons in Private and Non Governmental Organization Sectors and Government Companies in the West Bank Southern Governorates, 2010

Governorate/Region	No. of Employed Persons			No. of Establishments	المحافظة/المنطقة
	Total	Females	Males		
West Bank	211,878	43,592	168,286	76,760	
South of West Bank	61,731	10,983	50,748	22,110	
Hebron	43,154	6,307	36,847	16,291	
Bethlehem	18,577	4,676	13,901	5,819	

:35

2010

Table 35: Establishments in Operation in the Private and Non Governmental Organization Sectors and Government Companies in the West Bank Southern Governorates, 2010

ISIC	Economic Activity	West Bank	South of West Bank	Governorate			
				Bethlehem	Hebron		
A	Agriculture (raising of cattle & other animals)	5,930	658	107	551	()	
C	Mining & quarrying	280	179	12	167		
D	Manufacturing	11,423	3,736	1,124	2,612		
E	Electricity and water supply	194	12	2	10		
F	Construction	285	86	23	63		
G	Wholesale, retail trade & repairs	40,668	12,415	3,027	9,388		
H	Hotels & restaurants	3,320	686	218	468		
I	Transport, storage & communications	627	164	55	109		
J	Financial intermediation	596	145	61	84		
K	Real estate, renting & business activities	2,813	800	217	583		
M	Education	1,541	480	152	328		
N	Health & social work	3,086	1,082	317	765		
O	Other community, social & personal services	5,997	1,667	504	1,163		
Total		76,760	22,110	5,819	16,291		

2010

*

:36

Table 36: New Registered Vehicles in the West Bank Southern Governorates by Type of Vehicle, 2010

Type of Vehicle	West Bank	South of West Bank	Governorate		نوع المركبة
			Bethlehem	Hebron	
Private Cars	14,954	4,440	1,519	2,921	(/)
Taxis	2,131	487	105	382	
Motorcycles and Moped	42	3	2	1	
Buses (Public/ Private)	204	55	12	43	
Trailers and Semi-Trailers	190	22	1	21	
Agricultural Tractors	47	16	2	14	
Road Tractors	40	9	0	9	
Trucks and Commercial Cars	2,392	561	123	438	
Other Vehicles	48	7	2	5	
Total	20,048	5,600	1,766	3,834	

*: The number of licensed vehicles according to records of the Department of License in the Governorate did not reflect the actual number of vehicles.

*:

2010

*

:37

Table 37: Licensed Road Vehicles in the West Bank Southern Governorates by Type of Vehicle, 2010

Type of Vehicle	Wset Bank	South of West Bank	Governorate		نوع المركبة
			Bethlehem	Hebron	
Private Cars	85,874	23,455	9,234	14,221	()
Taxis	8,616	2,271	647	1,624	
Motorcycles and Moped	303	20	12	8	
Buses (Public/ Private)	1,350	382	122	260	
Trailers and Semi-Trailers	693	86	10	76	
Agricultural Tractors	830	160	26	134	
Road Tractors	315	80	4	76	
Trucks and Commercial Cars	23,114	6,436	1,567	4,869	
Other Vehicles	470	45	20	25	
Total	121,565	32,935	11,642	21,293	

*: The number of licensed vehicles according to records of the Department of License in the Governorate did not reflect the actual number of vehicles.

.*

2010

-

:38

Table 38: Value of Registered Imports by SITC-3 Categories in the West Bank Southern Governorates, 2010

Value in Thousand USD

القيمة بالآلاف دولار أمريكي

Section	West Bank	South of West Bank	Governorate		
			Bethlehem	Hebron	
Total Imports	3,573,317	990,058	264,469	725,589	
Food And Live Animals	592,534	153,248	36,835	116,413	
Beverages And Tobacco	154,830	29,862	11,397	18,465	
Raw Materials, Inedible Except Fuels	37,804	17,485	4,357	13,128	
Mineral Fuels, Lubricants And related Materials	1,046,322	319,287	106,426	212,861	
Animal And Vegetable Oils, Fats And Waxes	20,861	4,826	144	4,682	
Chemical And Related Products, n.e.s.*	345,604	82,445	14,572	67,873	
Manufactured Goods Classified mainly By Material	604,663	208,749	40,329	168,420	
Machinery And Transport Equipment's	530,879	102,852	34,132	68,720	
Miscellaneous Manufactured Articles	239,820	71,304	16,277	55,027	

* n.e.s: not elsewhere specified

*

2010

-

:39

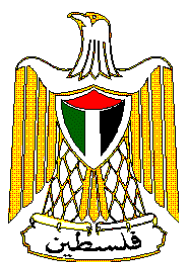
Table 39: Value of Registered Exports by SITC-3 Categories in the West Bank Southern Governorates, 2010

Value in Thousand USD

Section	Wset Bank	South of West Bank	Governorate		الباب
			Bethlehem	Hebron	
Total Exports	572,175	238,889	84,329	154,560	
Food And Live Animals	78,427	19,464	10,826	8,638	
Beverages And	24,013	2,256	1,571	685	
Raw Materials, Inedible Except Fuels	9,286	29,781	742	29,039	
Mineral Fuels, Lubricants And related Materials	1,548	776	50	726	
Animal And Vegetable Oils, Fats And Waxes	15,761	318	10	308	
Chemical And Related Products, n.e.s.*	73,984	5,062	3,274	1,788	* . . .
Manufactured Goods Classified mainly By Material	244,984	118,225	61,268	56,958	
Machinery And Transport Equipment's	32,976	4,797	1,773	3,024	
Miscellaneous Manufactured Articles	91,196	58,210	4,816	53,394	

* n.e.s: not elsewhere specified

* . . .



**Palestinian National Authority
Palestinian Central Bureau of Statistics**

**West Bank Southern Governorates
Statistical Year Book, 2011**

July, 2012

PAGE NUMBERS OF ENGLISH TEXT ARE PRINTED IN SQUARE BRACKETS.
TABLES ARE PRINTED IN ARABIC FORMAT (FROM RIGHT TO LEFT).

**This document is prepared in accordance with the
standard procedures stated in the Code of Practice for
Palestine Official Statistics 2006**

© July 2012.
All rights reserved.

Suggested Citation:

Palestinian Central Bureau of Statistics, 2012. West Bank Southern Governorates Statistical Yearbook, 2011. Ramallah - Palestine.

All correspondence should be directed to:
Palestinian South Bureau of Statistics
P.O.Box 1647 Ramallah, Palestine.

Tel: (972/970) 2 298 2700
Fax: (972/970) 2 298 2710
Toll Free: 1800300300
E-Mail: diwan@pcbs.gov.ps
web-site: <http://www.pcbs.gov.ps>

Acknowledgment

The Palestinian Central Bureau of Statistics (PCBS) extends its deep appreciations to all those who contributed to produce this yearbook.

West Bank Southern Governorates Statistical Yearbook, 2011 has been planned and conducted by a technical team from PCBS and with joint funding by the Palestinian National Authority (PNA) and the Core Funding Group (CFG) for the year 2012 represented by the Representative Office of Norway to PNA and the Swiss Development and Cooperation Agency (SDC).

Moreover, PCBS very much appreciates the distinctive efforts of the Core Funding Group (CFG) for their valuable contribution to funding the project.

Work Team

- **Report Preparation**
Ayat Maharmeh
 - **Maps Design**
Nafir Massad
 - **Graphic Design**
Ahmad Sawalmeh
 - **Dissemination Standards**
Hanan Janajreh
 - **Preliminary Review**
Maen Salhab
Mohammad Omari
Nazmi Harb
 - **Final Review**
Mahmoud Jaradat
 - **Overall Supervision**
Ola Awad
- President of PCBS

Important Note

Statistical data were derived from PCBS publications. For further details of the methodology and data quality standards for individual topics, readers can visit <http://www.pcbs.gov.ps>.

Special symbols were used in the tables of this book as follows:

(-): Nil, Data are not available.

Table of Contents

Subject	Page
List of Tables	
Introduction	
Chapter One: Main Indicators	[15]
1.1 Demographic Indicators	[15]
1.2 Geographic Indicators	[17]
1.3 Economic Indicators	[19]
Chapter Two: Concepts and Definitions	[21]
References	[27]
Tables	49

List of Tables

Table	Page
Table 1: Estimated Population in the West Bank Southern Governorates by Sex, Mid-2012	51
Table 2: Palestinian Population in the West Bank Southern Governorates by Refugee Status, End-2007	52
Table 3: Registered Marriages and Divorces in the West Bank Southern Governorates, 2010-2011	53
Table 4: Median Age at First Marriage in the West Bank Southern Governorates by Sex, 2010-2011	54
Table 5: Registered Live Births and Deaths Registered in the West Bank Southern Governorates by Sex, 2011	55
Table 6: Beds Per 1000 Inhabitants and Number of Hospitals and Beds in the West Bank Southern Governorates, 2010	56
Table 7: Hospital Activities in the West Bank Southern Governorates, 2010	57
Table 8: Percentage Distribution of Population (15 Years and Above) in the West Bank Southern Governorates by Sex and Labor Force Status, 2011	58
Table 9: Average Monthly Household Expenditure and Consumption in Dinar (JD) in the West Bank Southern Governorates, 2010	59
Table 10: Poverty Rates According to Actual Monthly Consumption Patterns of Individuals in the West Bank Southern Governorates, 2010	60
Table 11: Schools and Students in the West Bank Southern Governorates by Level and Supervisory Authority, 2011/2012	61
Table 12: Average Number of Students Per Class in the West Bank Southern Governorates by Level and Supervisory Authority, 2011/2012	62
Table 13: Average Number of Students Per Teacher in the West Bank Southern Governorates by Supervisory Authority, 2011/2012	63
Table 14: Percentage Distribution of Palestinian Population (15 Years and Above) in the West Bank Southern Governorates by Educational Attainment, 2011	64
Table 15: Percentage Distribution of Palestinian Population (15 Years and Above) in the West Bank Southern Governorates by Educational Attainment and Sex, 2011	65
Table 16: Literacy Rates of Palestinian Population (15 Years and Above) in The West Bank Southern Governorates by Sex and Age Group, 2011	66
Table 17: Mosques in the West Bank Southern Governorates, 2011	67
Table 18: Cultural Institutions In Operation in the West Bank Southern Governorates, 2011	68
Table 19: Total Area, Cultivated Land Area and Percentage of Cultivated Land Area in the West Bank Southern Governorates, 2009/2010	69

Table	Page
Table 20: Agricultural Holdings in the West Bank Southern Governorates by Type of Holding, 2009/2010	70
Table 21: Livestock in the West Bank Southern Governorates by Type, as on 01/10/2010	71
Table 22: Main Economic Indicators for Olive Presses in the West Bank Southern Governorates, 2011	72
Table 23: Percentage Distribution of Households in the West Bank Southern Governorates by Type of Housing Unit, 2010	73
Table 24: Percentage Distribution of Households in the West Bank Southern Governorates by Tenure of Housing Unit, 2010	74
Table 25: Percentage Distribution of Households in the West Bank Southern Governorates by Number of Rooms per Housing Unit, 2010	75
Table 26: Percentage Distribution of Households in the West Bank Southern Governorates by Housing Density, 2010	76
Table 27: Building Licenses Issued in the West Bank Southern Governorates by Utilization, 2011	77
Table 28: Localities in the West Bank Southern Governorate by Water Provider Through a Public Network, 2010	78
Table 29: Localities in the West Bank Southern Governorates by Alternative Water Sources, 2010	79
Table 30: Localities in the West Bank Southern Governorates by Electricity Provider Through a Public Network, 2010	80
Table 31: Localities in the West Bank Southern Governorates by the Provider of Solid Waste Collection Services, 2010	81
Table 32: Localities in The West Bank Southern Governorates by Wastewater Disposal Method, 2010	82
Table 33: Main Indicators for Hotel Activities in the West Bank Southern Governorates, 2011	83
Table 34: Establishments in Operation and Employed Persons in the Private and Non Governmental Organization Sectors and Government Companies in the West Bank Southern Governorates, 2010	84
Table 35: Establishments in Operation in the Private and Non Governmental Organization Sectors and Government Companies in the West Bank Southern Governorates, 2010	85
Table 36: New Registered Vehicles in the West Bank Southern Governorates by Type of Vehicle, 2010	86
Table 37: Licensed Road Vehicles in the West Bank Southern Governorates by Type of Vehicle, 2010	87
Table 38: Value of Registered Imports by SITC-3 Categories in the West Bank Southern Governorates, 2010	88
Table 39: Value of Registered Exports by SITC-3 Categories in the West Bank Southern Governorates, 2010	89

Introduction

Since its inception, PCBS has sought to build a system of Palestinian official statistics based on the needs of the society and in line with recommended standards, including full membership in the international statistical community. PCBS has adopted the principle of progression within existing Palestinian priorities as the basis for work towards developing the statistical system. PCBS has accomplished many statistical activities using primary sources, including censuses and field surveys, and secondary sources such as administrative records in cooperation with public and private sector institutions.

We are pleased to present the West Bank Southern Governorates Statistical Yearbook , 2011 to provide continuous time series data of general trends in different areas through a comprehensive statistical reference that covers most population, social, economic, and geographic areas.

This book is one of the most important and comprehensive official statistical references relating to the West Bank Southern Governorates.

This yearbook is divided into two chapters: the first chapter defines the main indicators relating to the West Bank Southern Governorates. The second chapter contains the concepts and definitions used in this statistical yearbook

We believe that we have succeeded in bridging gaps in information and have contributed to providing a key reference of official Palestinian statistics that will serve the developmental process and assist decision makers to create plans based on professional and scientific criteria at national and governorate level.

July, 2012

**Ola Awad
President of PCBS**

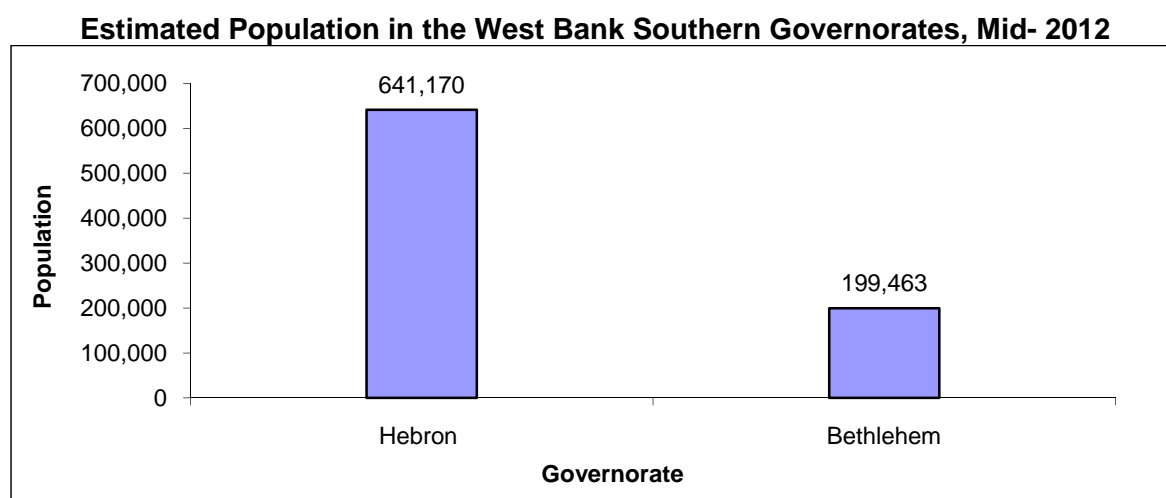
Chapter One

Main Indicators

This chapter presents the main findings of the most important demographic, geographic and economic indicators of the West Bank Southern Governorates.

1.1 Demographic Indicators**Population:**

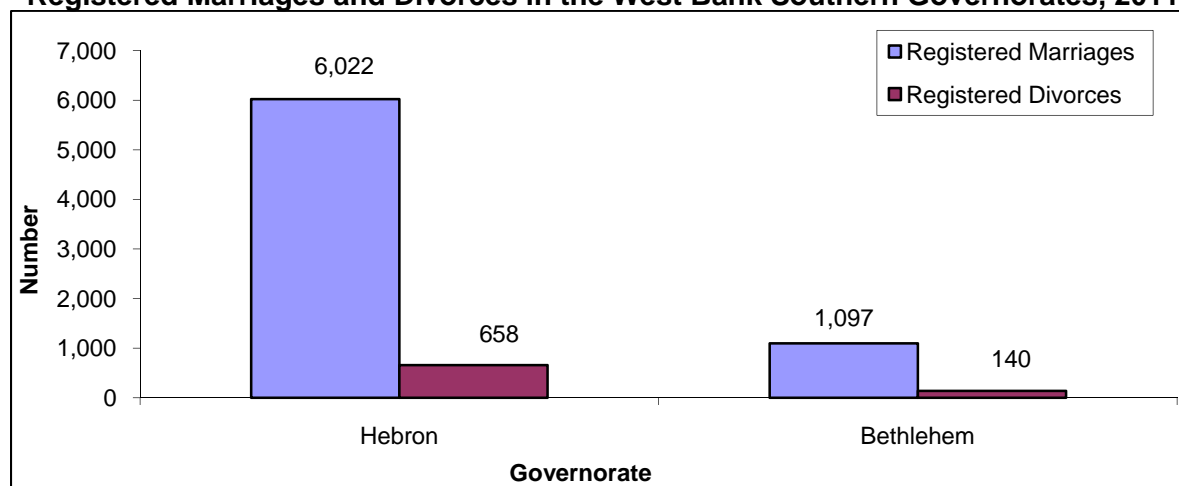
According to PCBS estimates, the population of the West Bank Southern Governorates was around 841 thousand in mid-2012



There are 144 thousand Palestinian refugees in the West Bank Southern Governorates are refugees.

There were 7,119 registered marriages in Sharia courts and churches in the West Bank Southern Governorates in 2011, which accounted for 19.6% of all marriages in the Palestinian Territory.

There were 798 registered divorces in Sharia courts in 2011, which accounted for 13.0 % of all cases of divorce in the Palestinian Territory.

Registered Marriages and Divorces in the West Bank Southern Governorates, 2011

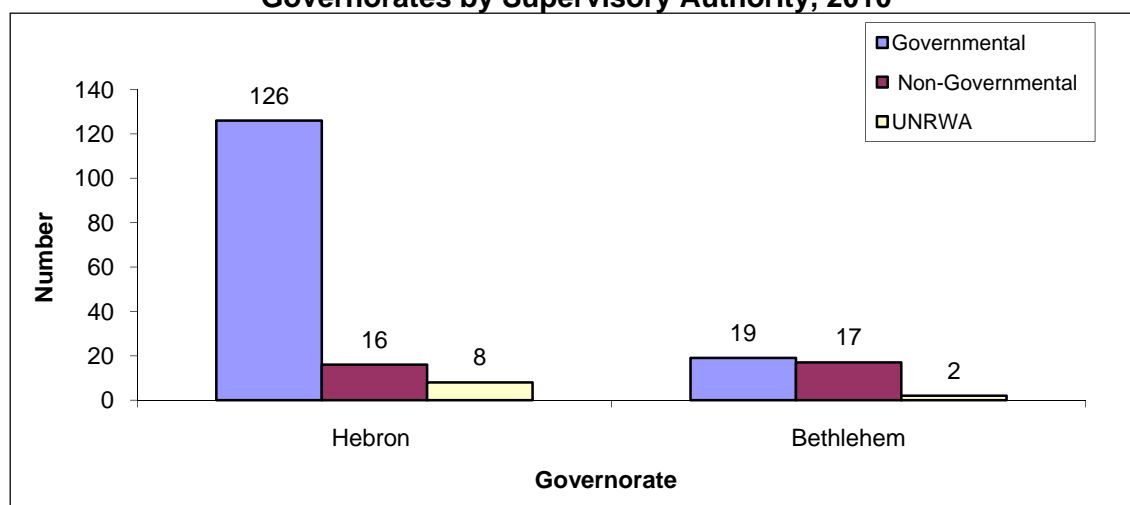
The median age at first marriage in the West Bank Southern Governorates was 24.7 years for males and 19.8 years for females in 2011.

There were 24,643 registered live births in 2011 in the West Bank Southern Governorates: 12,594 male and 12,049 female, and constituting 38.2% of the West Bank total births. In the same year, there were 1,857 registered deaths: 1,016 males and 841 females, representing 29.0% of all the West Bank deaths.

Health:

There were 17 hospitals in 2010 in the West Bank Southern Governorates, including five government hospitals and the rest non-governmental hospitals. The total number of beds was 1,099, making an average of 1.4 beds per 1000 inhabitants.

There were 188 primary health care centers in 2010 in the West Bank Southern Governorates, with 145 health centers supervised by the Ministry of Health, 33 run by non-governmental organizations, and 10 health centers run by UNRWA.

Primary Health Care Clinics and Centers in the West Bank Southern Governorates by Supervisory Authority, 2010

Labor:

The labor force participation rate of persons aged 15 years and above in the West Bank Southern Governorates was 47.1% : 19.8% for females and 73.5% for males. Of these, 79.4% were in full employment while 10.4% were underemployed.

The unemployment rate in the South Governorates was 20.6% : 24.7% for females and 19.5% for males.

Poverty:

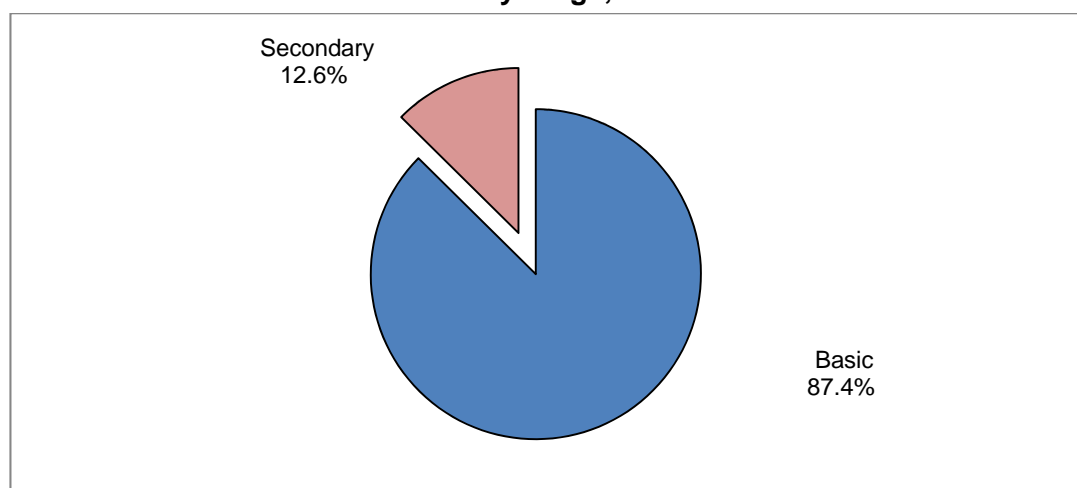
The poverty rate among individuals in the West Bank Southern Governorates was 29.7% in 2010, compared to 18.3% among individuals in the West Bank for the same year. Monthly household expenditure in the governorate of Hebron was higher than in the other South governorates at JD 805.3.

Education:

Schools in the West Bank Southern Governorates

There were 644 schools in total with 229,386 students: 113,402 males and 115,984 females.

**Percent Distribution of Students in the West Bank Southern Governorates
Schools by Stage, 2011/2012**



2.1 Geographic Indicators

Environment:

There were 40 localities not connected to a water network in the West Bank Southern Governorates in 2010.

In 2010, the local authorities provided water to 86 localities via the public network in the West Bank Southern Governorates, the Jerusalem Water Undertaking provided water to two localities and other authorities provided water services to 7 localities.

There were 13 localities not connected to an electricity network in the West Bank Southern Governorates during 2010. Local authorities provided electricity via the public network to 40 localities.

There were 40 localities in the West Bank Southern Governorates that had no solid waste collection service in 2010, while the local authority collected solid waste in 69 localities.

There were 12 localities used wastewater network as disposal method for wastewater in the West Bank Southern Governorates in 2010. And for the alternative method used in the localities for the disposal of wastewater in the absence of a sewerage system or sewerage network does not cover all users (residential, commercial, or industrial) in the localities, there are 120 localities used Porous and Tight Cesspits and 6 localities use more than one method.

Agriculture and Land Use:

The area of the West Bank Southern Governorates is 1,656 km² in year 2010, which represents around 29.3% of the total area of the West Bank. The cultivated land is 191.31km² and represents 21.7% of the total cultivated area in the West Bank, and 11.6% of the total area of the West Bank Southern Governorates, during the agricultural year 2009/2010.

The results indicated that during the agricultural year 2009/2010, there were 27,174 agricultural holdings in the West Bank Southern Governorates, which represent 29.9% of all agricultural holdings in the West Bank. The most common type of agricultural holding in the West Bank Southern Governorates was plant holdings: there were 17,862 plant holdings comprising 65.7% of all agricultural holdings in the West Bank Southern Governorates. There were 5,288 mixed agricultural holdings, comprising 19.5% of all holdings, and 4,024 animal holdings comprising 14.8% of all agricultural holdings in the West Bank Southern Governorates.

There were 8,913 cows raised in the West Bank Southern Governorates, which represent 36.7% of cows in the West Bank, in addition to 180,539 sheep representing 35.7% of sheep in the West Bank, and 75,351 goats representing 36.4% of goats raised in the West Bank on the enumeration day, the first of October 2010.

In 2011, there were 33 active olive presses in the West Bank Southern Governorates representing 13.0% of all olive presses in operation in the West Bank. The quantity of oil extracted in the West Bank Southern Governorates totaled 1,243.7 tons, equivalent to 6.4% of all oil produced in the West Bank.

The results show that 114 people were employed in olive pressing activities in the West Bank Southern Governorates in 2011, comprising 9.6 % all West Bank olive pressing employees.

The value added of olive pressing activities totaled USD 0.6 million in the West Bank Southern Governorates in 2011, representing 9.7% of the overall value added in the West Bank.

Housing Conditions:

In the West Bank Southern Governorates, 59.7% of households live in a villa or house and 39.7% live in an apartment.

Tourism:

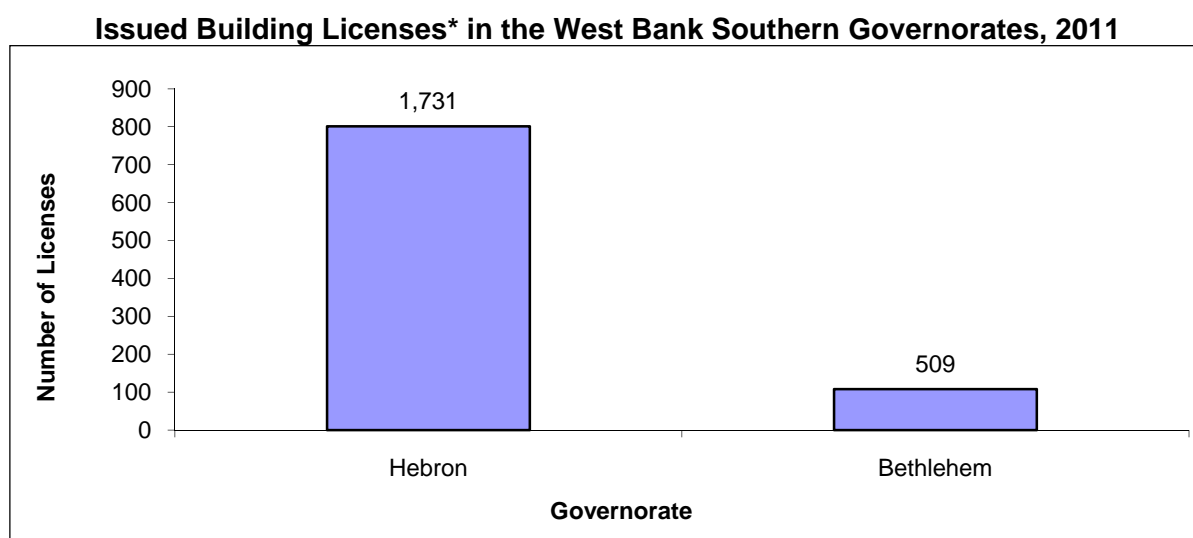
There were 28 hotels operating in the West Bank Southern Governorates with an average of 2,050 rooms and 4,341 beds. During 2011, the total number of hotel guests was 225,164, spending 569,641 nights. The room occupancy rate in the West Bank Southern Governorates hotels was 15.4% .

3.1 Economic Indicators**Establishments:**

There were 22,110 economic establishments operating in the West Bank Southern Governorates in 2010 with a total of 61,731 workers, comprising 50,748 males and 10,983 females.

Building Licenses:

In 2011, 2,240 building licenses were issued in the West Bank Southern Governorates with a total area of 1,076.6 m². Of these licenses, 686.3 m² were for new buildings and 390.3 m² were for existing buildings.



*Data do not include boundary walls licenses.

Transportation:

Licensed vehicles in the West Bank Southern Governorates in 2010 was 32,935.

There were 5,600 new registered vehicles in the West Bank Southern Governorates in 2010.

Registered Foreign Trade:**Imports:**

Imports decreased by 1.0% in the West Bank Southern Governorates in 2010 compared to 2009 and totaled USD 990.1 million.

Exports:

Exports decreased by 3.2% in the West Bank Southern Governorates in 2010 and totaled USD 238.9 million.

Trade Balance:

The trade balance for the West Bank Southern Governorates registered a deficit in 2010 of USD 751.2 million.

Chapter Two

Concepts and Definitions

Agricultural Holding:

It is an economic unit of agricultural production under single management comprising all kept livestock and all land used totally or partially for agricultural production purposes regardless of title, legal form, or size. Single management may be exercised by an individual or household, jointly by two or more individuals or households, by a clan or tribe, or by a juridical person such as a corporation, cooperative, or government agency. The land of the holdings may consist of one or more parcels located in one or more separate areas, or in one or more territorial or administrative divisions, providing the parcels share the same production means, such as labour, farm buildings, machinery or draught animals.

Agricultural Land:

It refers to the major classes of land use of agricultural holdings. For classification, the "gross area" is surveyed for each class. Agricultural land includes land under scattered farm buildings, yards and their annexes, plus permanently uncultivated land such as uncultivated patches, banks, footpaths, ditches, headlands and shoulders (ECE 1986).

Animal Holding:

The presence of animals controlled by the holder. The holder should have any number of cattle or camels, at least five heads of sheep, goats or pigs, at least 50 poultry birds (layers and broilers), or 50 rabbits or other poultry like turkeys, ducks, fer...etc, or a mixture of them, or at least three beehives controlled by the holder.

Average Room or Bed Occupancy:

It is defined as the total number of rooms or beds occupied and divided by the number of days.

Average Housing Density:

This refers to the average number of persons living per room. This average is calculated by dividing the total number of individuals of a certain category from households by the total number of rooms for that particular category.

Bed Occupancy:

Number of beds booked and paid for. Such beds are considered occupied whether they were actually used or not.

Bed Occupancy Rate:

Days of hospitalization by admitted patients, divided by the number of beds and multiplied by the days of the year.

Building:

The building is defined as any fixed construction that is temporarily or permanently erected on the surface of the earth or water. The building is surrounded by four walls or with at least one completed ceiling.

Employee Compensation:

The total remuneration, in cash or in kind, including social security contributions, payable by an olive press to an employee in return for work done by the latter.

Death:

The permanent disappearance of all evidence of life at any time after live birth has taken place.

Discharges:

Patient discharged from a hospital after having received diagnostic and curative health care, regardless of the case of the discharged person (cured or dead).

Exports:

It refers to the whole commodities (goods and services) that are exported outside the country, conditioned with ownership transcription to another economy, or to free customs regions as a discount from the national economy as a result of a transaction with a non-resident economy.

Establishment:

An enterprise or part of an enterprise in which one group of goods and services is produced (with the possibility of secondary activities).

Government School:

Any educational institution run by the Ministry of Education or any other ministry or governmental instrument.

Government Public Sector:

Includes all institutions of the three branches: legislative, judicial and executive.

Gross Value Added:

Value added is a South concept of production and refers to the generated value of any unit that carries out any productive activity. Gross value added is defined as the value of gross production less the value of intermediate consumption.

Guests:

It refers to visitors staying in hotels and using their facilities. Records of new guests are based on the number of visits regardless of whether it is the same person or not.

Health:

Many definitions exist. As defined by the World Health Organization: "A state of complete physical, mental and social well-being and not merely the absence of disease or infirmity".

Hospital:

An institution whose primary function is to provide services (diagnostic and therapeutic) for a variety of medical conditions, both surgical and non-surgical. Most hospitals also provide some outpatient services, particularly emergency care.

Hotel:

It is defined as an accommodation establishment providing overnight lodging for visitors in a room or unit. It should hold a number of persons exceeding that of an average single family. The establishment must be under one management and provide different facilities and services to visitors.

Housing Unit:

A building or part of a building constructed for one household only, with one or more independent entrances leading to the public road without passing through another housing unit. The unit might not be constructed for living purposes but be found occupied by a household during the enumeration. Likewise, the unit might be utilized for habitation or for

work purposes, or both. Also, it might be closed, vacant or occupied by one or more households during the survey.

Housing Unit Type:

Housing unit type may refer to a villa, house, apartment, independent room, marginal, tent or other.

Household Expenditure:

This refers to the amount of cash spent on the purchase of goods and services for living purposes and the value of goods and service payments, or part of payments, received from an employer, and cash expenditure spent as taxes (non-commercial or non-industrial), gifts, contributions, interest on debts, and other non-consumption items.

Household Consumption:

This refers to the amount of cash spent on the purchase of goods and services for living purposes and the value of goods and service payments, or part of payments, received from an employer, and own-produced goods and food, including consumed quantities during the recording period, and imputed rent.

Imports:

It refers to the whole commodities (goods and services) entering the country by air, land and sea that are used in consumption, convertibility in the manufacturing sector, and re-exportation.

Intermediate Consumption:

It is the value of the goods and services consumed as inputs, used up, or transformed during the production process. It is measured during a specific time period in a way similar to measuring production. Intermediate consumption is estimated by purchase price, which is defined as the producers' price plus transportation and wholesale and retail trade margins. The value of gross intermediate consumption on the level of the total economy is the same whether calculated by purchase or producers' price. However, on a detailed level, the two evaluations vary.

Establishment in Operation:

An establishment which is in operation during the implementation of the establishments census.

Labor Force:

The economically active population (labor force) consisting of all persons aged 15 years and over who were either employed or unemployed.

Livestock:

Refers to all animals kept or reared mainly for agricultural purposes, including cattle, buffaloes, sheep, goats, pigs, horses, mules, asses, camels, poultry, rabbits, bees and other domesticated animals, as well as foxes and minks.

Main Economic Activity:

Is the main work of the enterprise based on the ISIC- rev4 and that contribute the major proportion of the value added, whenever more than one activity exists in the enterprise.

Mean Duration:

Total days of hospitalization divided by the number of discharged patients.

Median Age at First Marriage:

The age that divides individuals into two categories, either married before it or married after it.

Mixed Holding:

Where the holder has plant and animal holdings according to the definition of a plant and animal holding, providing both animal and plant activities and sharing the same means of production, such as labour, farm buildings, machinery or draught animals.

The West Bank Southern Region:

Hebron, and Bethlehem governorates.

Number of Guest Nights:

Number of beds booked for hotel guests. Such beds are considered as occupied whether they were actually used or not. It is measured by guest night unit.

Number of Rooms:

It refers to furnished rooms for the use of guests. Such rooms might be single, double, triple, or quadruple. Rooms involving more than four beds were classified under 'others' in the questionnaire. A suite usually comprises one bedroom or more, a living room and private toilet facilities.

Number of Persons Engaged:

This includes paid employees, unpaid owners and family members, in addition to all permanent and temporary staff aged 10 years and more.

Olive Press:

An enterprise or part of an enterprise in which one group of goods and services is produced (olive oil, with the possibility of secondary activities).

Outputs:

It is the value of the final products of goods and services produced by a certain olive press which is used by other units for self-consumed or for the purposes of self gross fixed capital formation.

Percentage of Room or Bed Occupancy:

It is defined as the average occupancy of a room or bed, divided by the available rooms or beds and multiplied by one hundred.

Plant Holding:

The presence of cultivated or arable land area for any agricultural crops controlled by the holder. It must not be less than one dunum for an open cultivated area and 0.5 of a dunum for a protected cultivated area.

Population Density:

Number of population per km² of area.

Poverty:

Is often defined as "the absence of the minimum standard of income or resources to meet basic needs" and as "the inability to attain the minimum standard of living." Two poverty lines have been developed according to actual spending patterns of Palestinian families. The first, termed "deep poverty line" was calculated to reflect a budget for food, clothing and

housing. The second line adds other necessities including health care, education, transportation, personal care, and housekeeping supplies. Since consumption levels better reflect the population's needs, and help to specify the poverty line in Palestine, the monthly consumption level is used rather than the monthly income.

Private Sector:

Includes all institutions owned by individual/s or part of an organization the purpose of which is for profit in most cases.

Public Water Network:

A network of pipes for the purpose of providing clean water to households. It normally belongs to a municipality, council or to a private company and may be for different domestic uses.

Refugee Status:

This status relates to the Palestinians who were forced to leave their land in the Palestinian Territory occupied by Israel in 1948. It applies to their male sons and grandchildren. Every Palestinian falls under one of the following categories:

Registered Refugee: It applies to a registered refugee holding a refugee registration card issued by UNRWA.

Non-Registered Refugee: It applies to an unregistered refugee who does not hold a refugee registration card issued by UNRWA.

Non-Refugee: It applies to any Palestinian not categorized under any of the two aforementioned statuses.

Residence:

Defined in economic terms, the main criterion to determine the residence of an entity is the centre of economic interest. Persons are considered residents of the country where they live for at least one year, excluding students, for reasons of illness, and soldiers.

Room Occupancy:

Number of rooms booked and paid for. Such rooms are considered occupied whether they were actually used or not.

School:

Any educational institution, excluding kindergartens, regardless of the number of students and grade structure.

Secondary School:

Includes schools with secondary stage, or basic and secondary stage.

Sewage Network:

System of collectors, pipelines, conduits and pumps to evacuate wastewater (rainwater, domestic and other wastewater) from any of the location paces generation either to a municipal sewage treatment plant or to a location where wastewater is discharged.

Tenure of Housing Unit:

Tenure status indicates whether the household occupies the housing unit as an owner, rented, or other (including without payment and for work purposes).

Underemployment:

Underemployment exists when a person's employment is inadequate in relation to alternative employment, with account being taken of his/her occupational skills. The underemployed persons are classified into two groups: 1. Visible Underemployment: this refers to an insufficient volume of employment: persons who worked less than 35 hours during the reference week or worked less than the normal hours of work in their occupation were considered as visibly underemployed. 2. Invisible Underemployment: refers to a misapplication of labour resources or fundamental imbalance between labour and other factors of production, such as insufficient income.

Unemployed (According to the ILO Standards):

Unemployed persons are those individuals aged 15 years and over who did not work at all during the reference period, who were not absent from a job, were available for work and actively seeking a job during the reference period by one of the following methods: news paper, registered at employment office, asking friends or relatives, or any other method.

UNRWA School:

Any school run or supervised by UNRWA.

References

1. Palestinian Central Bureau of Statistics. Primary Educational Census Database for the Scholastic Years 2011/2012. Ministry of Education and Higher Education. Ramallah- Palestine.
2. Palestinian Central Bureau of Statistics, 2012. Database of Culture Statistics 2011. Ramallah- Palestine.
3. Palestinian Central Bureau of Statistics, 2012. Health Statistics Database, 2010. Ramallah- Palestine.
4. Ministry of Health, PHIC. Annual Health Report- 2010. Ramallah- Palestine.
5. Palestinian Central Bureau of Statistics, 2012. Population Register, Ministry of Interior, Updated Version up to 8/4/2012. Ramallah- Palestine.
6. Palestinian Central Bureau of Statistics, 2012. Foreign Trade Statistics, Goods and Services, 2010: Main Results. Ramallah – Palestine.
7. Palestinian Central Bureau of Statistics, 2011. Olive Press Survey 2010- Main Results. Ramallah- Palestine.
8. Palestinian Central Bureau of Statistics, 2012. Database of Population, Housing and Establishments Census 2007. Ramallah – Palestine
9. Palestinian Central Bureau of Statistics, 2012. Revised Estimates based on the final results of Population, Housing and Establishments Census 2007. Ramallah-Palestine.
10. Palestinian Central Bureau of Statistics, 2012. Marriage and Divorce Database 2011. Ramallah-Palestine
11. Palestinian Central Bureau of Statistics, 2012. Population, Housing and Establishments Census 2007 and updated up to 2009.
12. Palestinian Central Bureau of Statistics, 2012. Expenditure and Consumption Survey 2010. Ramallah- Palestine.
13. Palestinian Central Bureau of Statistics, 2011. Local Community Survey 2010: Main Findings. Ramallah – Palestine.
14. Palestinian Central Bureau of Statistics, 2011. Land Use Statistics Tables in the Palestinian Territory, 2008. Ramallah - Palestine.
15. Palestinian Central Bureau of Statistics, 2011. Agriculture Census 2010: Final Results. Ramallah- Palestine.
16. Palestinian Central Bureau of Statistics, 2012. Hotel Activities in Palestinian Territory, (Annual Bulletins, 2011). Ramallah - Palestine.

17. Palestinian Central Bureau of Statistics, 2012. Palestinian Labor Force Survey: Annual Report, 2011. Ramallah – Palestine.
18. Palestinian Central Bureau of Statistics, 2011. Transportation and Communication Statistics in the Palestinian Territory: Annual Report 2010. Ramallah-Palestine.
19. Palestinian Central Bureau of Statistics, 2011. Housing Conditions Survey: main Result. Ramallah-Palestine.