

2007-



( )

**2006**

© 1433 - 2012

:

*:2007*

**. 2012**

. - .( ) -

:

- **1647** . .

(970/972) 2 298 7200 :

(970/972) 2 298 7210 :

1800300300 :

diwan@pcbs.gov.ps :

<http://www.pcbs.gov.ps> :



A handwritten signature in black ink, located to the left of the text below the portrait.

فخامة الرئيس محمود عباس "أبو مازن"  
رئيس اللجنة التنفيذية لمنظمة التحرير الفلسطينية  
رئيس السلطة الوطنية الفلسطينية

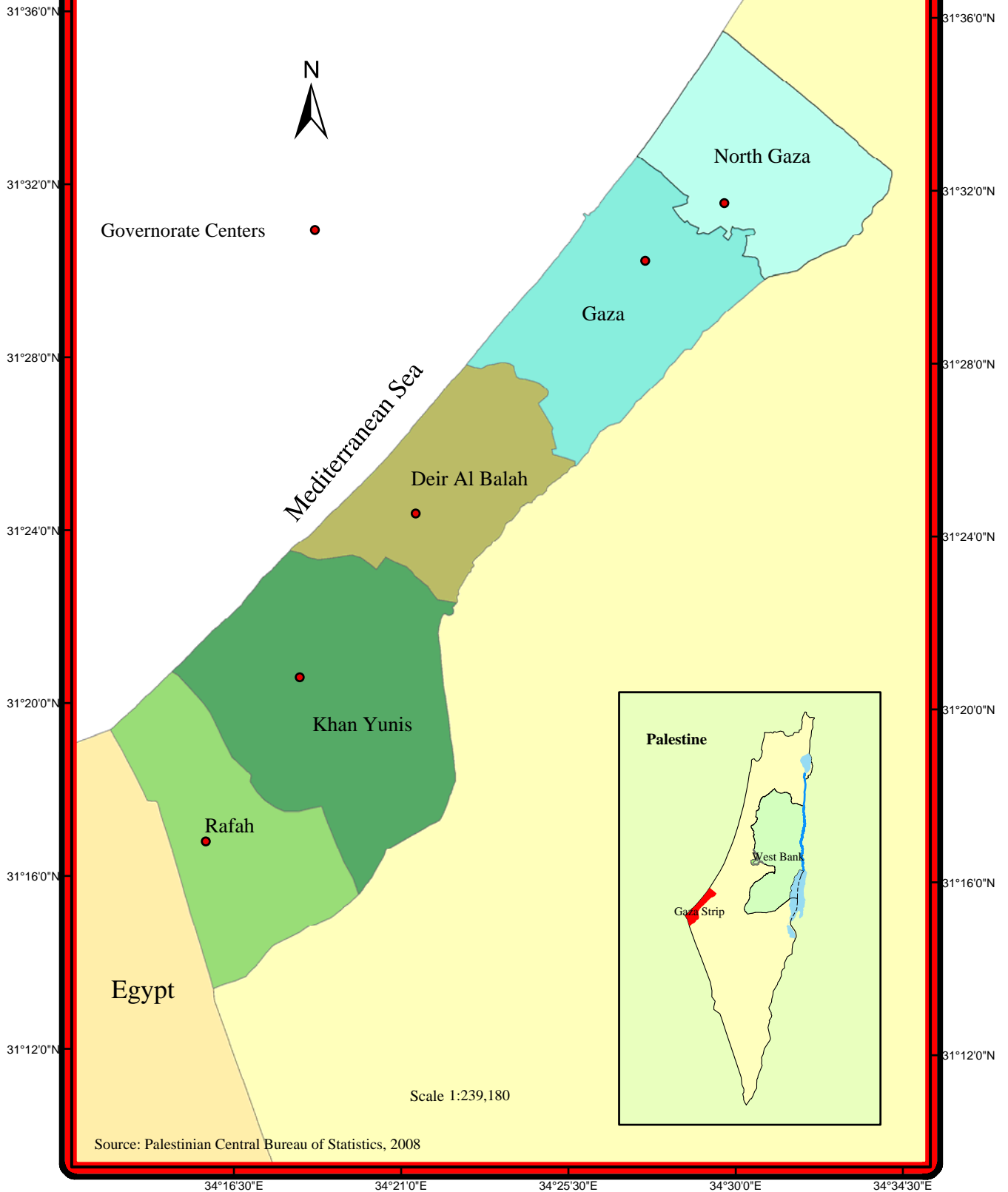




34°12'0"E 34°16'30"E 34°21'0"E 34°25'30"E 34°30'0"E 34°34'30"E

2008

## Gaza Strip Governorates, 2008





بِسْمِ اللَّهِ الرَّحْمَنِ الرَّحِيمِ

السلطة الوطنية الفلسطينية



منظمة التحرير الفلسطينية

بسم الله الرحمن الرحيم

تقديم من سيادة الرئيس محمود عباس "أبو مازن"  
رئيس السلطة الوطنية الفلسطينية

يعتبر التعداد العام للسكان والمساكن والمنشآت ركناً أساسياً من أركان النظام الإحصائي الرسمي في أي دولة، حيث يأتي تنفيذه خلال عام 2007 استحقاقاً قانونياً وتنموياً ووطنياً وسيادياً، ويمثل تنفيذه لبنة أساسية في عملية بناء الدولة وإرساء أسس التخطيط السليم بمعايير علمية نظراً لما يوفره من إحصاءات دقيقة وتفصيلية لكافة نواحي الحياة، ويساهم في بناء الدولة الفلسطينية وإنجاز الاستقلال السياسي والاقتصادي والاجتماعي، وتحقيق التنمية.

لقد جاء تنفيذ هذا المشروع الوطني الكبير في ظل ظروف غاية في التعقيد على مختلف الأصعدة، مما جعل تنفيذ التعداد مهمة صعبة تعترضها الكثير من التحديات والأخطار، إلا أن عزيمة الشعب الفلسطيني وإصرار الفريق الوطني، واحتضان القيادة السياسية جعلت من التغلب على هذا التحدي أمراً ممكناً أدى إلى تنفيذ التعداد العام الثاني في الأراضي الفلسطينية بجودة عالية وفق المعايير الدولية، بأيد وبخبرات فلسطينية وقرار فلسطيني مستقل، واستجابة للحاجات الوطنية في شتى المجالات.

بِسْمِ اللَّهِ الرَّحْمَنِ الرَّحِيمِ

السلطة الوطنية الفلسطينية



منظمة التحرير الفلسطينية

لقد أسهم التعداد في إعادة الموضوع التنموي على الأجندة الوطنية والدولية في فلسطين، بعد أن تراجع دورها لصالح الأجندة الإغاثية، فالتنمية أهم الدعامات الضرورية لتأسيس مجتمع ديمقراطي، وبناء إنسان حر ملتزم بالبادئ الوطنية والإنسانية. والإحصاءات الدقيقة والعلمية هي العمود الفقري لوضع خطط تنموية مبنية على أسس سليمة تشكل رافعة لقضايا التنمية وتحقيق الأهداف المعلنة عليها.

لقد أبدى المجتمع الدولي اهتماماً بالغاً بهذا المشروع التنموي وعبر عن اهتمامه من خلال الدعم المادي والفني الذي قدمته بعض الدول الصديقة والمنظمات الدولية. فقد كان لصندوق الأمم المتحدة للسكان مساهمة مادية وفنية جادة، وكذلك صندوق أوبك للتنمية الدولية، وحكومات النرويج وهولندا وسويسرا وأستراليا، والمملكة العربية السعودية ومنظمة الأمم المتحدة للطفولة "اليونيسيف".

إننا إذ نهدي هذا الإنجاز التاريخي الى كل فلسطيني، فإننا نعبر عن تقديرنا وشكرنا لأسرة الجهاز المركزي للإحصاء الفلسطيني والفريق الوطني للتعداد على إصرارهم وعطائهم وتفانيهم في تحقيق هذا الإنجاز.

رام الله: 2008/5/22

محمود عباس

رئيس اللجنة التنفيذية لمنظمة التحرير الفلسطينية

رئيس السلطة الوطنية الفلسطينية

2007

.

(OFID)

(UNFPA)

.(UNICEF)

2007

.

.

.

.2007



•

•

•

•

•

•





2007

1997

2007

**2012**



.1

2007

.2

%100

.3

(-)

.%0.05

(0)



|           |     |
|-----------|-----|
|           | :   |
| 23        | 1.1 |
| 23        | 2.1 |
| 23        | 3.1 |
| 24        | 4.1 |
| 24        | 5.1 |
| 25        | 6.1 |
| <b>27</b> | :   |
| <b>37</b> | :   |
| 37        | 1.3 |
| 37        | 2.3 |
| 39        | 3.3 |
| <b>43</b> | :   |
| 43        | 1.4 |
| 43        | 2.4 |
| 47        | 3.4 |
| 48        | 4.4 |
| <b>49</b> | :   |
| 49        | 1.5 |
| 49        | 2.5 |
| 50        | 3.5 |
| 52        | 4.5 |
| 54        | 5.5 |
| <b>59</b> |     |



|           |        |            |
|-----------|--------|------------|
| <b>61</b> | 2007   | <b>:1</b>  |
| <b>62</b> | 2007   | <b>:2</b>  |
| <b>65</b> |        | <b>:3</b>  |
|           | 2007   |            |
| <b>66</b> | 2007   | <b>:4</b>  |
| <b>67</b> | ( 12)  | <b>:5</b>  |
|           | 2007   |            |
| <b>68</b> | 2007   | <b>:6</b>  |
| <b>69</b> | ( 5)   | <b>:7</b>  |
|           | 2007   |            |
| <b>70</b> | ( 10)  | <b>:8</b>  |
|           | 2007   |            |
| <b>71</b> |        | <b>:9</b>  |
|           | 2007   |            |
| <b>73</b> | ( 10)  | <b>:10</b> |
|           | 2007   |            |
| <b>74</b> | ( 10)  | <b>:11</b> |
|           | 2007   |            |
| <b>75</b> | ( 10)  | <b>:12</b> |
|           | 2007   |            |
| <b>76</b> | /      | <b>:13</b> |
|           | 2007 / |            |
| <b>77</b> |        | <b>:14</b> |
|           | 2007   |            |
| <b>79</b> | 2007   | <b>:15</b> |

|           |               |            |
|-----------|---------------|------------|
| <b>80</b> | 2007          | <b>:16</b> |
| <b>81</b> | ( 10)<br>2007 | <b>:17</b> |
| <b>82</b> | 2007          | <b>:18</b> |
| <b>83</b> | 2007          | <b>:19</b> |
| <b>84</b> | 2007          | <b>:20</b> |
| <b>85</b> | 2007          | <b>:21</b> |
| <b>86</b> | )<br>2007 (   | <b>:22</b> |
| <b>87</b> | 2007          | <b>:23</b> |
| <b>88</b> | 2007          | <b>:24</b> |
| <b>89</b> | 2007          | <b>:25</b> |
| <b>90</b> | 2007          | <b>:26</b> |



|    |            |    |
|----|------------|----|
| 44 | 2007       | :1 |
| 45 | /          | :2 |
|    | 2007 /     |    |
| 45 | 2007 ( 10) | :3 |
| 46 | ( 10)      | :4 |
|    | 2007       |    |
| 46 | 2007       | :5 |
| 47 | 2007 ( 12) | :6 |
| 47 | 2007       | :7 |



**1.1**

2007

2006/12/16

2007

**2.1**

5-3

**3.1**

2000 (4)

:

2007

.1

.2

.3

.4

752  
667  
599  
400  
1961  
1967  
1997  
(J1)1967  
1922  
1.033  
1.74  
805  
1931  
1944  
1952  
400  
210  
2.6  
5.1  
5.1  
2007  
2006  
2007  
2007  
2008  
2007

2011/ - 8

6.1

.1

2008/2/7

( )

.2

.2012 -

.2009 - 2008

.3



2007

.( )

$$\vdots$$
$$\vdots$$

.2007/12/01

.1

) 2007/12/01

.2

.(

2007/12/16-01

( )

.3

.

.4

2007/12/01

2007/12/01

2007/12/01

.5

.2007/12/01

2007/12/01

.6

2007/12/01 .7

-:

2007/12/01 •

•

2007/12/01 •

2007/12/01 •

.2007/12/01 •

•

2007/12/01 •

2007/12/01 •

•

•

•

:

.2007/12/01 .1

.2007/12/01 .2

2007/12/01 .3

:

: .1

:( ) .2

:





( )

.

: /

( )

: /

( )

: /

( )

: /

: /

:

( )

: .1

: .2

: .3

: .4

:

:

:

:

:

35

(34-15)

(14-1)

:

:

( 7)

: **14-1** .1

14-1

( 7)

: **34-15** .2

34-15

35

( 7)

: **35** .3

:

-

( 7)

: .4

( 7)

: .5

$$\begin{matrix} & & : & - \\ ( & 7) & : & .6 \end{matrix}$$

$$\begin{matrix} & & . \\ ( & 7) & : & .7 \end{matrix}$$

$$\begin{matrix} & & : \\ & ( & 7) \\ & : \\ ( & 7) & : & / & .8 \end{matrix}$$

$$\begin{matrix} & & . \\ ( & 7) & ( & ) & : & .9 \end{matrix}$$

$$\begin{matrix} & & & & . \\ ( & 7) & : & / & / & .10 \end{matrix}$$

$$\begin{matrix} & & . \\ & : & / & .11 \end{matrix}$$

$$\begin{matrix} . & \dots\dots \\ & : & .12 \end{matrix}$$

:

$$\begin{aligned}
 & \vdots \\
 & \vdots \\
 & 12 \\
 & \vdots \\
 & \vdots \\
 & ) \qquad 12 \qquad : \qquad .1 \\
 & \qquad \qquad \qquad ( \\
 & \qquad 12 \qquad : \qquad .2 \\
 & ( \qquad ) \\
 & \vdots \\
 & \qquad 12 \qquad : \qquad .3 \\
 & \vdots \\
 & ( \quad ) \qquad 12 \qquad : \qquad .4 \\
 & \qquad \qquad \qquad / \\
 & ( \quad ) \qquad 12 \qquad : \qquad .5 \\
 & \qquad \qquad \qquad / \\
 & \qquad 12 \qquad : \qquad .6 \\
 & \qquad \qquad \qquad /
 \end{aligned}$$

$$:( \quad )$$

$$\begin{aligned}
 & \vdots \\
 & \vdots \\
 & .( \quad \dots \quad ) \quad . \\
 & \qquad \qquad \qquad : \quad .1
 \end{aligned}$$

: .2

: .3

4

( )

: .5

: .6

( )

: .7

$$\vdots$$
$$(\quad) 2 \quad (4)$$
$$\vdots$$
$$\vdots$$

**.1**

: .2

3.

• **.4**

: .5

**.6 :**

•

•

: .1

:( ) .2

**: .3**

: .4

:( ) .5

: .6

$$\vdots$$

•

**: .1**

.( )

: .2

: .3

$$\vdots$$

•

1

)

(

: .2

( )

: .3

: .4





1.3

2007/12/01

( ) 2006/08/02 . .

.1

1967

.2

2.3

1.2.3

2.2.3

:

:

/

/

DVD/

:

5

7

10

12

12

:

.

:

.

:

.( )

:

12

.

**3.3**

2007

:

**1.3.3**

2007

2006

.

150

150

. 4,916

**2.3.3**

4,916

(J1)

.2007/09/11

2007/08/18

25

3.3.3

2007/10/20

2007/11/10

2007/12/01

2007/12/01-11/30

4.3.3

2007/12/16 2007/12/01

2008/01/08 2007/12/25

5.3.3

2008/01/08 2007/12/16

( 2007/12/25 2007/12/16  
2008/01/12 2008/01/08

2007/12/29

2008/01/07  
2008/01/26 2008/01/24

2008/01/03 –2007/12/29

2008/01/16-2008/01/12

.2008/01/30

2007/12/16

.2007/12/18

2007/12/16

2007/12/30

2007/12/24

2008/01/08

.2008/01/15

2007

CDs

( )

120

2008/01/13

.2011

-



1.4

1,416,966 2007/12/1-11/30

102.9

698,324

718,642

:

1.1.4

(1,387,530)

683,820

703,710

2.1.4 عدد السكان من خلال نتائج الدراسة البعدية

(1,416,966)

(%2.1)

2.4

1.2.4

%44.5

617,799

14-0

%52.5

727,915

64-15

35,143

65

%0.5

%2.5

1997

2007

%44.5

1997

%50.2

14-0

-15

%5.7

%52.5

1997

%46.9

64

%5.6

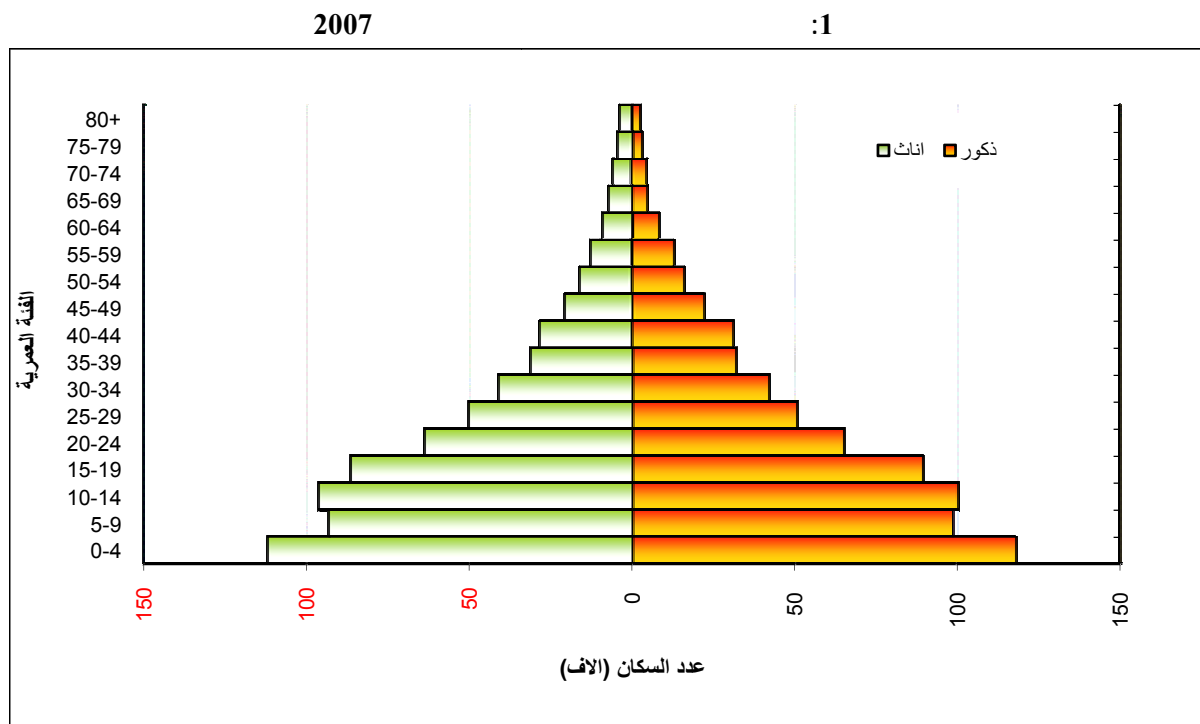
2007

6.9

5.0

2007

.1997



/

**2.2.4**

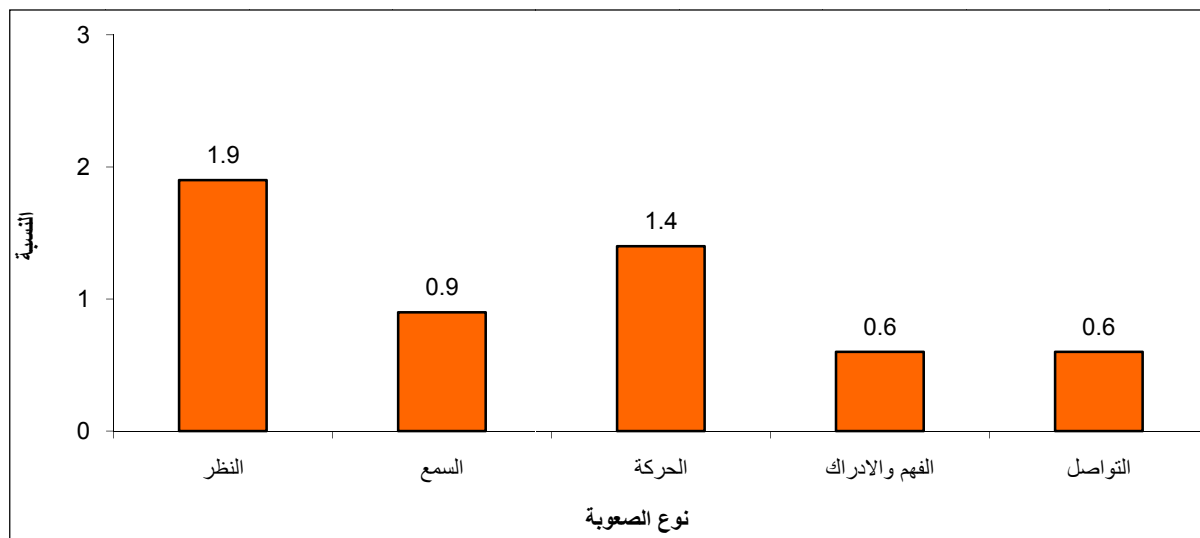
|               |               |              |          |
|---------------|---------------|--------------|----------|
|               |               | (%3.7)       | (51,432) |
| 12,687 (%1.9) |               | 26,168       |          |
|               | 19,828 (%0.9) |              |          |
| 8,477 (%0.6)  |               | 8,388 (%1.4) |          |
|               | .(%0.6)       |              |          |
| %4.6          |               |              |          |
| %.3.2         |               |              |          |

( )

1997



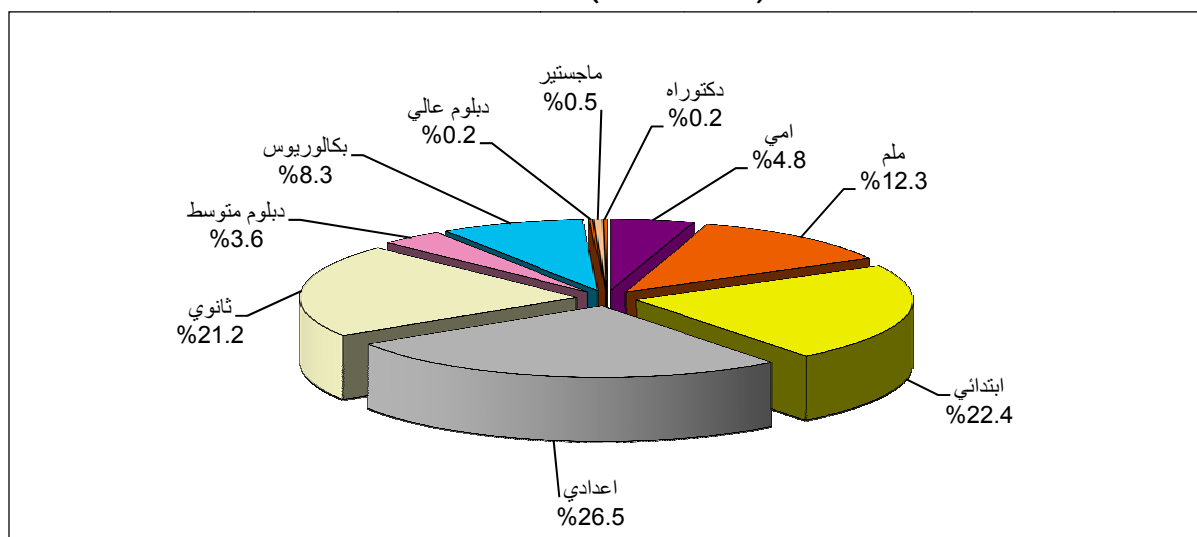
2007 / / :2



3.2.4

(%46.5) 535,035 5  
87,560 10  
10 (%9.1)  
10 (%10.4)

2007 ( 10) :3



10  
10  
(%4.8)  
46,379  
(%5.9)

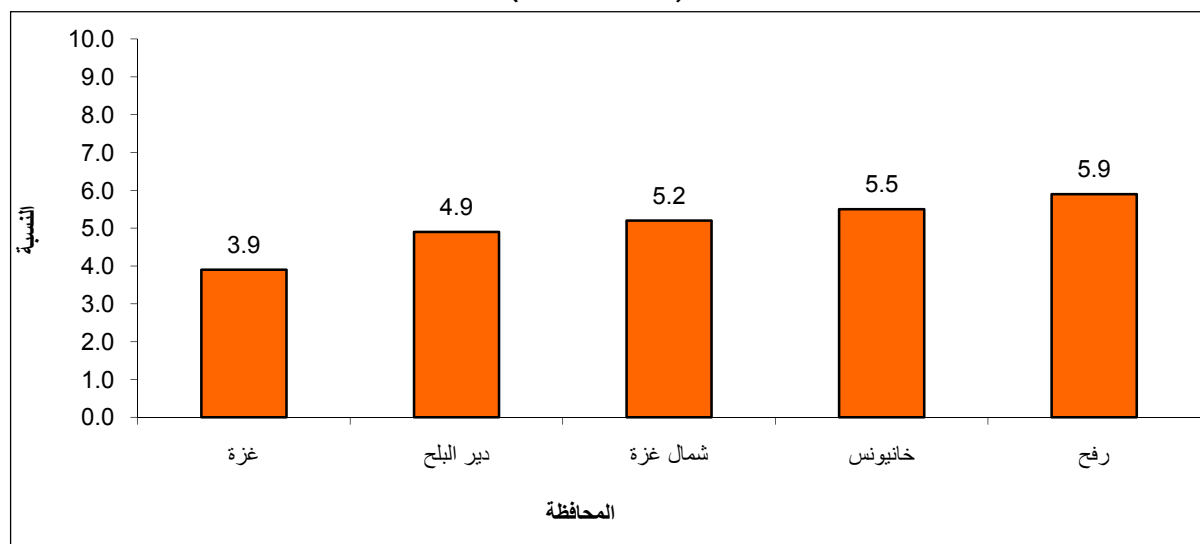
10

.(%3.9)

2007

( 10)

:4



4.2.4

108,360

10

%36.8

(%41.5)

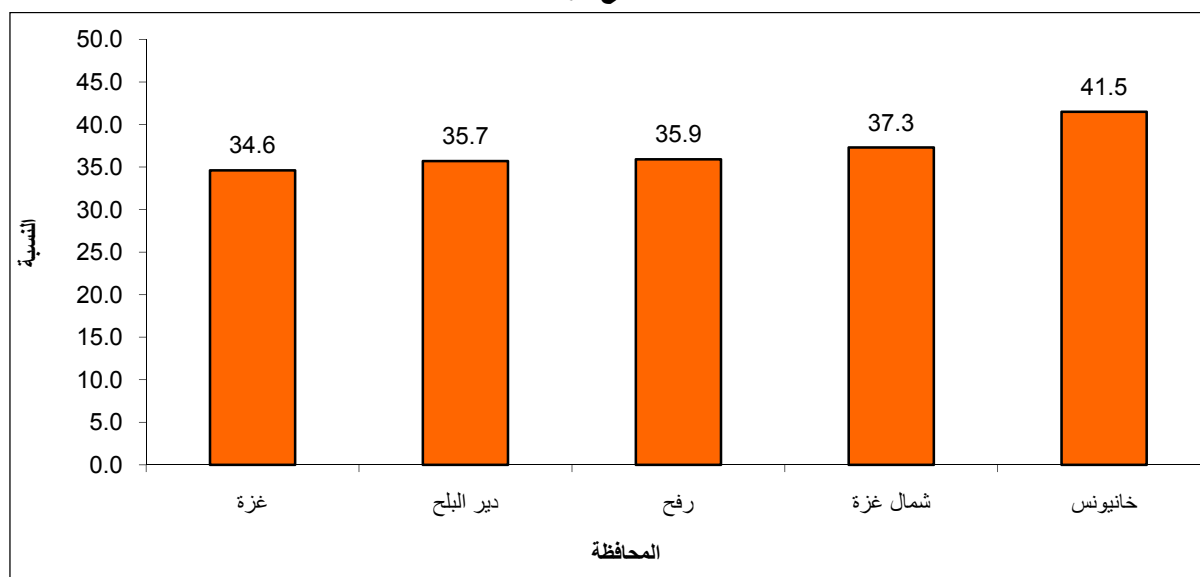
10

.(%34.6)

2007

قطاع غزة

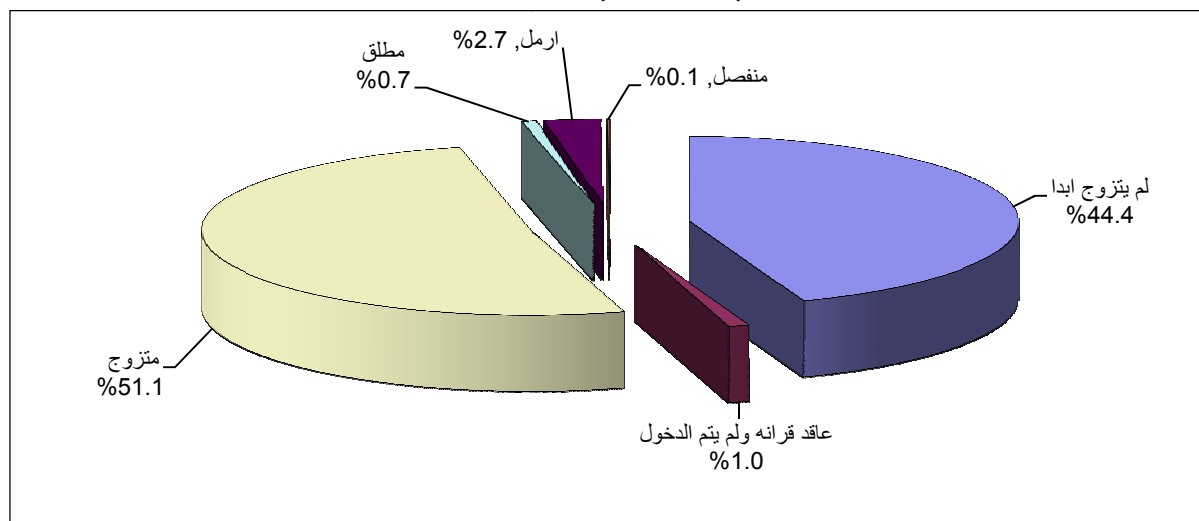
:5



## 5.2.4

|         |    |         |
|---------|----|---------|
| 450,744 | 12 |         |
| 229,287 | 12 | (%51.1) |
| 6,038   | 12 | (%49.7) |
|         | 12 | (%52.4) |
|         | 12 | (%0.7)  |

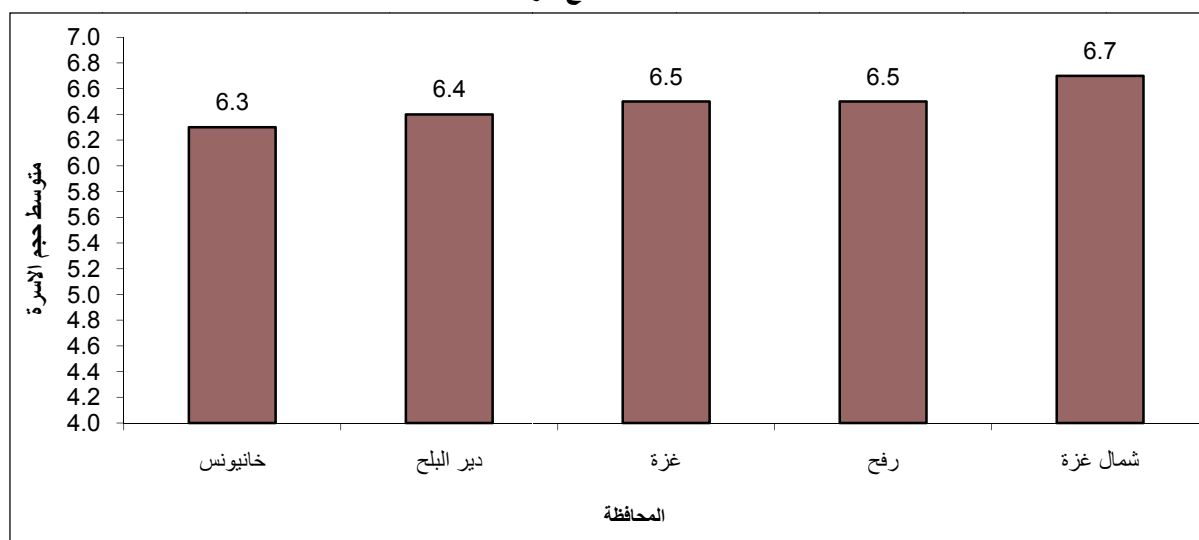
2007 ( 12 ) :6



## 3.4

(6.5) 214,760

2007 قطاع غزة :7



|         |         |         |      |       |            |
|---------|---------|---------|------|-------|------------|
| (%77.8) | 2007    | 166,296 |      |       |            |
|         | .1997   | %71.8   |      |       |            |
|         | 2007    | %19.4   | 1997 | %25.3 |            |
|         |         |         |      |       |            |
|         | .2007   | %2.5    | 1997 | %2.6  |            |
| .1997   | %0.3    | 2007    | %0.2 |       |            |
|         |         |         |      |       |            |
|         |         |         |      |       | <b>4.4</b> |
|         | 214,760 |         |      |       |            |
|         |         | %0.5    | %1.5 | %36.6 | %60.9      |
|         |         |         |      | %0.4  |            |

**1.5**

**2.5**

3.5

1.3.5

( )

%30

2.3.5

5

15

5

150

( )

%2

%5

%4

%.2.7

3.3.5

4.5

%50

(%100)

( )



:

.1

.

.2

( )

(600)

.3

:

(1)

.

%100

%100

%100

.

(9)

.

%100

.1

.2

.

.3

.4

( )

.

5.5

( )

:

2007

( )

:

1.5.5

:

( 5 1)

:

.1

.2

.3

.4

.5

4916 2007

218

144

144

2.5.5

:

|       |        | / |
|-------|--------|---|
| % 2.1 | % 97.9 |   |
| % 1.9 | % 98.1 |   |
| % 2.4 | % 97.6 |   |
| % 2.3 | % 97.7 |   |
| % 1.8 | % 98.2 |   |
| % 1.6 | % 98.4 |   |

3.5.5

#### 4.5.5

2000

2004

2006

.1997

1996

1997

1997

2007

| 2007  | 2006  | 2004  | 2000  | 1997  |       |
|-------|-------|-------|-------|-------|-------|
| 102.9 | 102.7 | 102.6 | 101.7 | 103.1 |       |
| 16.0  | 15.0  | 15.0  | 15.0  | 14.0  |       |
|       |       |       |       |       |       |
| 44.5  | 48.8  | 48.7  | 40.2  | 50.2  | 14-0  |
| 52.5  | 48.9  | 48.6  | 46.9  | 46.9  | 64-15 |
| 2.5   | 2.3   | 2.7   | 2.9   | 2.9   | +65   |
| 0.5   | 0.0   | 0.0   | 0.0   | 0.0   |       |
|       |       |       |       |       |       |
| 2.5   | 2.4   | 3.0   | 2.3   | 2.6   |       |
| 77.5  | 73.0  | 83.5  | 74.3  | 71.8  |       |
| 19.4  | 24.5  | 13.4  | 23.0  | 25.3  |       |
| 0.2   | 0.1   | 0.1   | 0.4   | 0.3   |       |
| 6.5   | 7.0   | 6.2   | 6.9   | 6.9   |       |
| 1.8   | 1.9   | 2.0   | 2.0   | 2.1   |       |

5.5.5

(9)

| %   |  |
|-----|--|
| 0.5 |  |
| 0.1 |  |
| 0.0 |  |
| 0.4 |  |
| 0.4 |  |
| 0.2 |  |
| 0.1 |  |

6.5.5

:

- 
- 
- 
- 
-

## **Tables**





2007

\* :1

Table 1: Population\* in Gaza Strip by Governorate and Sex, 2007

| Governorate   | Sex Ratio | Average Household Size | Households           |         | Population           |         |                      |         |                      |           |  |
|---------------|-----------|------------------------|----------------------|---------|----------------------|---------|----------------------|---------|----------------------|-----------|--|
|               |           |                        |                      |         | Females              |         | Males                |         | Both Sexes           |           |  |
|               |           |                        | النسبة<br>Percentage | Number  | النسبة<br>Percentage | Number  | النسبة<br>Percentage | Number  | النسبة<br>Percentage | Number    |  |
| Gaza Strip    | 102.9     | 6.5                    | 100.0                | 219,316 | 100.0                | 698,324 | 100.0                | 718,642 | 100.0                | 1,416,966 |  |
| North Gaza    | 103.5     | 6.7                    | 18.4                 | 40,371  | 19.0                 | 132,893 | 19.1                 | 137,601 | 19.1                 | 270,494   |  |
| Gaza          | 103.5     | 6.5                    | 35.0                 | 76,868  | 34.9                 | 244,038 | 35.2                 | 252,654 | 35.1                 | 496,692   |  |
| Dier al Balah | 101.7     | 6.4                    | 14.6                 | 32,078  | 14.6                 | 101,860 | 14.4                 | 103,554 | 14.5                 | 205,414   |  |
| Khan Yunis    | 103.0     | 6.3                    | 19.7                 | 43,179  | 19.1                 | 133,420 | 19.1                 | 137,408 | 19.1                 | 270,828   |  |
| Rafah         | 101.5     | 6.5                    | 12.2                 | 26,820  | 12.3                 | 86,114  | 12.2                 | 87,425  | 12.2                 | 173,539   |  |

\* Includes population counted in Gaza Strip, and also includes the uncounted population estimates according to post enumeration survey.

2007

:2

Table 2: Population in Gaza Strip by Age Group, Sex and Governorate, 2007

| Age Group and Sex | Governorate    |                |                |                |                | Gaza Strip       |                |
|-------------------|----------------|----------------|----------------|----------------|----------------|------------------|----------------|
|                   | Rafah          | Khan Yunis     | Dier al Balah  | Gaza           | North Gaza     |                  |                |
| <b>Both Sexes</b> |                |                |                |                |                |                  |                |
| 0 - 4             | 28,603         | 43,725         | 31,580         | 80,557         | 45,143         | <b>229,608</b>   | 4 - 0          |
| 5 - 9             | 23,283         | 36,062         | 26,766         | 67,457         | 38,064         | <b>191,632</b>   | 9 - 5          |
| 10 - 14           | 23,533         | 36,480         | 27,934         | 68,934         | 39,678         | <b>196,559</b>   | 14 - 10        |
| <b>0 - 14</b>     | <b>75,419</b>  | <b>116,267</b> | <b>86,280</b>  | <b>216,948</b> | <b>122,885</b> | <b>617,799</b>   | <b>14 - 0</b>  |
| 15 - 19           | 21,169         | 33,589         | 25,191         | 61,131         | 34,731         | <b>175,811</b>   | 19 - 15        |
| 20 - 24           | 15,463         | 25,308         | 18,861         | 44,614         | 24,716         | <b>128,962</b>   | 24 - 20        |
| 25 - 29           | 12,158         | 19,812         | 14,914         | 35,216         | 18,710         | <b>100,810</b>   | 29 - 25        |
| 30 - 34           | 10,105         | 16,390         | 12,330         | 28,682         | 15,334         | <b>82,841</b>    | 34 - 30        |
| 35 - 39           | 7,805          | 12,167         | 9,525          | 22,006         | 11,694         | <b>63,197</b>    | 39 - 35        |
| 40 - 44           | 7,450          | 11,144         | 9,278          | 20,149         | 11,070         | <b>59,091</b>    | 44 - 40        |
| 45 - 49           | 5,282          | 8,134          | 6,437          | 14,975         | 7,833          | <b>42,661</b>    | 49 - 45        |
| 50 - 54           | 3,832          | 6,556          | 4,854          | 11,107         | 5,499          | <b>31,848</b>    | 54 - 50        |
| 55 - 59           | 3,074          | 5,235          | 4,153          | 9,037          | 4,037          | <b>25,536</b>    | 59 - 55        |
| 60 - 64           | 1,935          | 3,310          | 2,563          | 6,384          | 2,966          | <b>17,158</b>    | 64 - 60        |
| <b>15 - 64</b>    | <b>88,273</b>  | <b>141,645</b> | <b>108,106</b> | <b>253,301</b> | <b>136,590</b> | <b>727,915</b>   | <b>64 - 15</b> |
| 65 - 69           | 1,488          | 2,313          | 1,773          | 4,115          | 1,916          | <b>11,605</b>    | 69 - 65        |
| 70 - 74           | 1,316          | 2,124          | 1,626          | 3,432          | 1,743          | <b>10,241</b>    | 74 - 70        |
| 75 - 79           | 947            | 1,570          | 1,202          | 2,281          | 1,121          | <b>7,121</b>     | 79 - 75        |
| 80 - 84           | 452            | 922            | 603            | 1,131          | 595            | <b>3,703</b>     | 84 - 80        |
| 85 - 89           | 213            | 459            | 250            | 410            | 237            | <b>1,569</b>     | 89 - 85        |
| 90 - 94           | 92             | 189            | 91             | 163            | 94             | <b>629</b>       | 94 - 90        |
| 95 +              | 29             | 107            | 45             | 60             | 34             | <b>275</b>       | + 95           |
| <b>65 +</b>       | <b>4,537</b>   | <b>7,684</b>   | <b>5,590</b>   | <b>11,592</b>  | <b>5,740</b>   | <b>35,143</b>    | <b>+ 65</b>    |
| Not Stated        | 2,533          | 357            | 713            | 2,930          | 140            | <b>6,673</b>     |                |
| <b>Total</b>      | <b>170,762</b> | <b>265,953</b> | <b>200,689</b> | <b>484,771</b> | <b>265,355</b> | <b>1,387,530</b> | المجموع        |

2007

:( ) 2

Table 2 (Cont.): Population in Gaza Strip by Age Group, Sex and Governorate, 2007

| Age Group and Sex | Governorate   |                |                |                |                | Gaza Strip     |                |
|-------------------|---------------|----------------|----------------|----------------|----------------|----------------|----------------|
|                   | Rafah         | Khan Yunis     | Dier al Balah  | Gaza           | North Gaza     |                |                |
| <b>Males</b>      |               |                |                |                |                |                |                |
| 0 - 4             | 14,597        | 22,334         | 16,186         | 41,543         | 23,088         | <b>117,748</b> | 4 - 0          |
| 5 - 9             | 11,984        | 18,586         | 13,800         | 34,817         | 19,445         | <b>98,632</b>  | 9 - 5          |
| 10 - 14           | 11,959        | 18,521         | 14,145         | 35,297         | 20,337         | <b>100,259</b> | 14 - 10        |
| <b>0 - 14</b>     | <b>38,540</b> | <b>59,441</b>  | <b>44,131</b>  | <b>111,657</b> | <b>62,870</b>  | <b>316,639</b> | <b>14 - 0</b>  |
| 15 - 19           | 10,628        | 17,174         | 12,813         | 30,962         | 17,786         | <b>89,363</b>  | 19 - 15        |
| 20 - 24           | 7,768         | 12,826         | 9,606          | 22,389         | 12,645         | <b>65,234</b>  | 24 - 20        |
| 25 - 29           | 6,059         | 10,146         | 7,495          | 17,582         | 9,428          | <b>50,710</b>  | 29 - 25        |
| 30 - 34           | 5,053         | 8,467          | 6,185          | 14,466         | 7,766          | <b>41,937</b>  | 34 - 30        |
| 35 - 39           | 3,965         | 6,195          | 4,770          | 11,240         | 5,970          | <b>32,140</b>  | 39 - 35        |
| 40 - 44           | 3,853         | 5,855          | 4,809          | 10,673         | 5,724          | <b>30,914</b>  | 44 - 40        |
| 45 - 49           | 2,761         | 4,154          | 3,290          | 7,843          | 4,104          | <b>22,152</b>  | 49 - 45        |
| 50 - 54           | 1,861         | 3,248          | 2,360          | 5,651          | 2,774          | <b>15,894</b>  | 54 - 50        |
| 55 - 59           | 1,539         | 2,639          | 2,017          | 4,633          | 2,018          | <b>12,846</b>  | 59 - 55        |
| 60 - 64           | 848           | 1,532          | 1,175          | 3,117          | 1,442          | <b>8,114</b>   | 64 - 60        |
| <b>15 - 64</b>    | <b>44,335</b> | <b>72,236</b>  | <b>54,520</b>  | <b>128,556</b> | <b>69,657</b>  | <b>369,304</b> | <b>64 - 15</b> |
| 65 - 69           | 549           | 882            | 649            | 1,720          | 759            | <b>4,559</b>   | 69 - 65        |
| 70 - 74           | 575           | 916            | 702            | 1,577          | 755            | <b>4,525</b>   | 74 - 70        |
| 75 - 79           | 382           | 590            | 432            | 906            | 461            | <b>2,771</b>   | 79 - 75        |
| 80 - 84           | 182           | 378            | 238            | 454            | 243            | <b>1,495</b>   | 84 - 80        |
| 85 - 89           | 102           | 196            | 108            | 165            | 105            | <b>676</b>     | 89 - 85        |
| 90 - 94           | 44            | 66             | 35             | 53             | 42             | <b>240</b>     | 94 - 90        |
| 95 +              | 7             | 48             | 12             | 27             | 11             | <b>105</b>     | + 95           |
| <b>65 +</b>       | <b>1,841</b>  | <b>3,076</b>   | <b>2,176</b>   | <b>4,902</b>   | <b>2,376</b>   | <b>14,371</b>  | <b>+ 65</b>    |
| Not Stated        | 1,310         | 182            | 345            | 1,475          | 84             | <b>3,396</b>   |                |
| <b>Total</b>      | <b>86,026</b> | <b>134,935</b> | <b>101,172</b> | <b>246,590</b> | <b>134,987</b> | <b>703,710</b> | المجموع        |

2007

:( ) 2

Table 2 (Cont.): Population in Gaza Strip by Age Group, Sex and Governorate, 2007

| Age Group and Sex | Governorate   |                |               |                |                | Gaza Strip     |                |
|-------------------|---------------|----------------|---------------|----------------|----------------|----------------|----------------|
|                   | Rafah         | Khan Yunis     | Dier al Balah | Gaza           | North Gaza     |                |                |
| <b>Females</b>    |               |                |               |                |                |                |                |
| 0 - 4             | 14,006        | 21,391         | 15,394        | 39,014         | 22,055         | <b>111,860</b> | 4 - 0          |
| 5 - 9             | 11,299        | 17,476         | 12,966        | 32,640         | 18,619         | <b>93,000</b>  | 9 - 5          |
| 10 - 14           | 11,574        | 17,959         | 13,789        | 33,637         | 19,341         | <b>96,300</b>  | 14 - 10        |
| <b>0 - 14</b>     | <b>36,879</b> | <b>56,826</b>  | <b>42,149</b> | <b>105,291</b> | <b>60,015</b>  | <b>301,160</b> | <b>14 - 0</b>  |
| 15 - 19           | 10,541        | 16,415         | 12,378        | 30,169         | 16,945         | <b>86,448</b>  | 19 - 15        |
| 20 - 24           | 7,695         | 12,482         | 9,255         | 22,225         | 12,071         | <b>63,728</b>  | 24 - 20        |
| 25 - 29           | 6,099         | 9,666          | 7,419         | 17,634         | 9,282          | <b>50,100</b>  | 29 - 25        |
| 30 - 34           | 5,052         | 7,923          | 6,145         | 14,216         | 7,568          | <b>40,904</b>  | 34 - 30        |
| 35 - 39           | 3,840         | 5,972          | 4,755         | 10,766         | 5,724          | <b>31,057</b>  | 39 - 35        |
| 40 - 44           | 3,597         | 5,289          | 4,469         | 9,476          | 5,346          | <b>28,177</b>  | 44 - 40        |
| 45 - 49           | 2,521         | 3,980          | 3,147         | 7,132          | 3,729          | <b>20,509</b>  | 49 - 45        |
| 50 - 54           | 1,971         | 3,308          | 2,494         | 5,456          | 2,725          | <b>15,954</b>  | 54 - 50        |
| 55 - 59           | 1,535         | 2,596          | 2,136         | 4,404          | 2,019          | <b>12,690</b>  | 59 - 55        |
| 60 - 64           | 1,087         | 1,778          | 1,388         | 3,267          | 1,524          | <b>9,044</b>   | 64 - 60        |
| <b>15 - 64</b>    | <b>43,938</b> | <b>69,409</b>  | <b>53,586</b> | <b>124,745</b> | <b>66,933</b>  | <b>358,611</b> | <b>64 - 15</b> |
| 65 - 69           | 939           | 1,431          | 1,124         | 2,395          | 1,157          | <b>7,046</b>   | 69 - 65        |
| 70 - 74           | 741           | 1,208          | 924           | 1,855          | 988            | <b>5,716</b>   | 74 - 70        |
| 75 - 79           | 565           | 980            | 770           | 1,375          | 660            | <b>4,350</b>   | 79 - 75        |
| 80 - 84           | 270           | 544            | 365           | 677            | 352            | <b>2,208</b>   | 84 - 80        |
| 85 - 89           | 111           | 263            | 142           | 245            | 132            | <b>893</b>     | 89 - 85        |
| 90 - 94           | 48            | 123            | 56            | 110            | 52             | <b>389</b>     | 94 - 90        |
| 95 +              | 22            | 59             | 33            | 33             | 23             | <b>170</b>     | + 95           |
| <b>65 +</b>       | <b>2,696</b>  | <b>4,608</b>   | <b>3,414</b>  | <b>6,690</b>   | <b>3,364</b>   | <b>20,772</b>  | <b>+ 65</b>    |
| Not Stated        | 1,223         | 175            | 368           | 1,455          | 56             | <b>3,277</b>   |                |
| <b>Total</b>      | <b>84,736</b> | <b>131,018</b> | <b>99,517</b> | <b>238,181</b> | <b>130,368</b> | <b>683,820</b> | المجموع        |

**Table 3: Total Population in Localities in Gaza Strip by Size-Class of Population in locality, Households and Sex, 2007**

| Population site in the Locality | Population     |                |                  | *<br>Number of<br>Households* | Number of<br>Localities |                    |
|---------------------------------|----------------|----------------|------------------|-------------------------------|-------------------------|--------------------|
|                                 | Females        | Males          | Both Sexes       |                               |                         |                    |
| 30,000 and above                | 584,019        | 602,204        | 1,186,223        | 182,516                       | 13                      | 30,000             |
| 25,000-29,999 Inhabitants       | 13,705         | 13,736         | 27,441           | 4,280                         | 1                       | نسمة 29,999-25,000 |
| 20,000-24,999 Inhabitants       | 11,655         | 11,757         | 23,412           | 3,596                         | 1                       | نسمة 24,999-20,000 |
| 15,000-19,999 Inhabitants       | 34,430         | 35,214         | 69,644           | 11,468                        | 4                       | نسمة 19,999-15,000 |
| 10,000-14,999 Inhabitants       | 5,313          | 5,226          | 10,539           | 1,717                         | 1                       | نسمة 14,999-10,000 |
| 5,000 - 9,999 Inhabitants       | 27,165         | 28,078         | 55,243           | 8,734                         | 8                       | نسمة 9,999-5,000   |
| 3,000 - 4,999 Inhabitants       | 3,749          | 3,766          | 7,515            | 1,309                         | 2                       | نسمة 4,999-3,000   |
| 1,000 - 2,999 Inhabitants       | 3,784          | 3,729          | 7,513            | 1,150                         | 3                       | نسمة 2,999-1,000   |
| Less Than 1,000 Inhabitants     | -              | -              | -                | -                             | -                       | 1,000              |
| <b>Total</b>                    | <b>683,820</b> | <b>703,710</b> | <b>1,387,530</b> | <b>214,770</b>                | <b>33</b>               |                    |

\* Includes private and institutional households.

.( )

\*

2007

:4

**Table 4: Population in Gaza Strip by Governorate, Sex and Nationality, 2007**

| Governorate   | Total   |         | Nationality and Sex |       |                     |       |             |       |            |       |              |         |  |
|---------------|---------|---------|---------------------|-------|---------------------|-------|-------------|-------|------------|-------|--------------|---------|--|
|               |         |         | Not Stated          |       | Other Nationalities |       | Other Arabs |       | Jordanians |       | Palestinians |         |  |
|               | Females | Males   | Females             | Males | Females             | Males | Females     | Males | Females    | Males | Females      | Males   |  |
| Gaza Strip    | 683,820 | 703,710 | 3,006               | 3,158 | 419                 | 3     | 434         | 32    | 47         | 14    | 679,914      | 700,503 |  |
| North Gaza    | 130,368 | 134,987 | 30                  | 50    | 97                  | 1     | 76          | 2     | 10         | 4     | 130,155      | 134,930 |  |
| Gaza          | 238,181 | 246,590 | 1,336               | 1,382 | 179                 | 2     | 147         | 22    | 26         | 8     | 236,493      | 245,176 |  |
| Dier al Balah | 99,517  | 101,172 | 329                 | 313   | 39                  | -     | 58          | -     | 3          | 2     | 99,088       | 100,857 |  |
| Khan Yunis    | 131,018 | 134,935 | 126                 | 137   | 45                  | -     | 72          | 4     | 3          | -     | 130,772      | 134,794 |  |
| Rafah         | 84,736  | 86,026  | 1,185               | 1,276 | 59                  | -     | 81          | 4     | 5          | -     | 83,406       | 84,746  |  |

2007

( 12)

:5

**Table 5: Palestinian Population (12 Years and Over) in Gaza Strip by Governorate, Sex and Marital Status, 2007**

| Governorate   | Total   |         | Marital Status and Sex |       |           |       |         |       |          |       |         |         |                 |       |               |         |  |
|---------------|---------|---------|------------------------|-------|-----------|-------|---------|-------|----------|-------|---------|---------|-----------------|-------|---------------|---------|--|
|               |         |         | Not Stated             |       | Separated |       | Widowed |       | Divorced |       | Married |         | Legally Married |       | Never Married |         |  |
|               | Females | Males   | Females                | Males | Females   | Males | Females | Males | Females  | Males | Females | Males   | Females         | Males | Females       | Males   |  |
| Gaza Strip    | 437,677 | 445,213 | 680                    | 294   | 510       | 139   | 21,967  | 2,160 | 5,071    | 967   | 229,287 | 221,457 | 3,855           | 4,667 | 176,307       | 215,529 |  |
| North Gaza    | 82,075  | 84,590  | 106                    | 28    | 105       | 20    | 3,681   | 316   | 867      | 161   | 44,032  | 42,522  | 742             | 914   | 32,542        | 40,629  |  |
| Gaza          | 151,635 | 154,976 | 237                    | 72    | 131       | 50    | 7,194   | 760   | 1,656    | 316   | 81,173  | 78,949  | 1,291           | 1,558 | 59,953        | 73,271  |  |
| Dier al Balah | 65,357  | 65,462  | 107                    | 45    | 60        | 16    | 3,489   | 363   | 817      | 163   | 32,776  | 31,636  | 585             | 765   | 27,523        | 32,474  |  |
| Khan Yunis    | 84,928  | 86,650  | 104                    | 57    | 136       | 30    | 4,653   | 429   | 991      | 187   | 43,906  | 42,034  | 708             | 816   | 34,430        | 43,097  |  |
| Rafah         | 53,682  | 53,535  | 126                    | 92    | 78        | 23    | 2,950   | 292   | 740      | 140   | 27,400  | 26,316  | 529             | 614   | 21,859        | 26,058  |  |

2007

:6

**Table 6: Palestinian Population in Gaza Strip by Governorate, Sex and Refugee Status, 2007**

| Governorate   | Total   |         | Refugee Status and Sex |       |             |         |                        |       |                    |         |  |
|---------------|---------|---------|------------------------|-------|-------------|---------|------------------------|-------|--------------------|---------|--|
|               |         |         | Not Stated             |       | Not Refugee |         | Non-Registered Refugee |       | Registered Refugee |         |  |
|               | Females | Males   | Females                | Males | Females     | Males   | Females                | Males | Females            | Males   |  |
| Gaza Strip    | 679,914 | 700,503 | 125                    | 95    | 227,626     | 239,570 | 5,268                  | 4,795 | 446,895            | 456,043 |  |
| North Gaza    | 130,155 | 134,930 | 1                      | -     | 35,821      | 38,256  | 826                    | 752   | 93,507             | 95,922  |  |
| Gaza          | 236,493 | 245,176 | 67                     | 44    | 110,714     | 116,760 | 1,618                  | 1,459 | 124,094            | 126,913 |  |
| Dier al Balah | 99,088  | 100,857 | 12                     | 8     | 13,773      | 14,080  | 718                    | 648   | 84,585             | 86,121  |  |
| Khan Yunis    | 130,772 | 134,794 | 21                     | 24    | 54,403      | 57,039  | 1,275                  | 1,167 | 75,073             | 76,564  |  |
| Rafah         | 83,406  | 84,746  | 24                     | 19    | 12,915      | 13,435  | 831                    | 769   | 69,636             | 70,523  |  |



2007

( 5)

:7

**Table 7: Palestinian Population (5 Years and Over) in Gaza Strip by Governorate, Sex and Educational Attendance, 2007**

| Governorate   | Total   |         | Educational Attendance and Sex |       |                      |         |                  |         |  |
|---------------|---------|---------|--------------------------------|-------|----------------------|---------|------------------|---------|--|
|               |         |         | Not Stated                     |       | Not Attending School |         | Attending School |         |  |
|               | Females | Males   | Females                        | Males | Females              | Males   | Females          | Males   |  |
| Gaza Strip    | 567,793 | 582,519 | 275                            | 213   | 306,868              | 307,921 | 260,650          | 274,385 |  |
| North Gaza    | 108,075 | 111,808 | 49                             | 42    | 56,822               | 56,706  | 51,204           | 55,060  |  |
| Gaza          | 197,366 | 203,542 | 99                             | 73    | 107,611              | 109,734 | 89,656           | 93,735  |  |
| Dier al Balah | 83,655  | 84,639  | 47                             | 39    | 44,986               | 44,581  | 38,622           | 40,019  |  |
| Khan Yunis    | 109,332 | 112,415 | 34                             | 21    | 59,913               | 60,295  | 49,385           | 52,099  |  |
| Rafah         | 69,365  | 70,115  | 46                             | 38    | 37,536               | 36,605  | 31,783           | 33,472  |  |

2007

( 10)

:8

Table 8: Palestinian Population (10 Years and Over) in Gaza Strip by Governorate, Sex and Educational Attainment, 2007

| Governorate and Sex | Total          | Educational Attainment |              |              |                |               |                   |                |                |                |                    |               |  |
|---------------------|----------------|------------------------|--------------|--------------|----------------|---------------|-------------------|----------------|----------------|----------------|--------------------|---------------|--|
|                     |                | Not Stated             | Ph.D         | Master       | Higher Diploma | Bachelor      | Associate Diploma | Secondary      | Preparatory    | Elementary     | Can Read and Write | Illiterate    |  |
| <b>Both Sexes</b>   |                |                        |              |              |                |               |                   |                |                |                |                    |               |  |
| <b>Gaza Strip</b>   | <b>958,689</b> | <b>383</b>             | <b>1,649</b> | <b>4,717</b> | <b>1,715</b>   | <b>79,479</b> | <b>34,740</b>     | <b>203,458</b> | <b>254,312</b> | <b>214,326</b> | <b>117,531</b>     | <b>46,379</b> |  |
| North Gaza          | <b>181,820</b> | 68                     | 322          | 848          | 245            | 13,729        | 4,988             | 36,197         | 48,435         | 43,712         | 23,892             | 9,384         |  |
| Gaza                | <b>333,458</b> | 177                    | 738          | 2,075        | 589            | 27,141        | 11,330            | 68,618         | 88,115         | 79,464         | 42,267             | 12,944        |  |
| Dier al Balah       | <b>141,528</b> | 54                     | 192          | 623          | 340            | 13,550        | 7,510             | 30,885         | 36,752         | 28,517         | 16,114             | 6,991         |  |
| Khan Yunis          | <b>185,685</b> | 20                     | 264          | 758          | 359            | 15,258        | 6,361             | 40,220         | 51,266         | 38,859         | 22,169             | 10,151        |  |
| Rafah               | <b>116,198</b> | 64                     | 133          | 413          | 182            | 9,801         | 4,551             | 27,538         | 29,744         | 23,774         | 13,089             | 6,909         |  |
| <b>Males</b>        |                |                        |              |              |                |               |                   |                |                |                |                    |               |  |
| <b>Gaza Strip</b>   | <b>483,893</b> | <b>161</b>             | <b>1,541</b> | <b>4,035</b> | <b>1,178</b>   | <b>46,781</b> | <b>16,989</b>     | <b>97,593</b>  | <b>126,538</b> | <b>112,825</b> | <b>63,368</b>      | <b>12,884</b> |  |
| North Gaza          | <b>92,364</b>  | 27                     | 312          | 738          | 167            | 8,521         | 2,478             | 18,576         | 24,017         | 22,464         | 12,442             | 2,622         |  |
| Gaza                | <b>168,730</b> | 84                     | 670          | 1,697        | 392            | 16,103        | 5,748             | 31,780         | 42,423         | 42,576         | 23,384             | 3,873         |  |
| Dier al Balah       | <b>70,839</b>  | 16                     | 179          | 535          | 228            | 7,330         | 3,363             | 14,656         | 19,327         | 15,078         | 8,478              | 1,649         |  |
| Khan Yunis          | <b>93,829</b>  | 5                      | 257          | 683          | 252            | 9,078         | 2,998             | 19,026         | 25,937         | 20,439         | 12,172             | 2,982         |  |
| Rafah               | <b>58,131</b>  | 29                     | 123          | 382          | 139            | 5,749         | 2,402             | 13,555         | 14,834         | 12,268         | 6,892              | 1,758         |  |
| <b>Females</b>      |                |                        |              |              |                |               |                   |                |                |                |                    |               |  |
| <b>Gaza Strip</b>   | <b>474,796</b> | <b>222</b>             | <b>108</b>   | <b>682</b>   | <b>537</b>     | <b>32,698</b> | <b>17,751</b>     | <b>105,865</b> | <b>127,774</b> | <b>101,501</b> | <b>54,163</b>      | <b>33,495</b> |  |
| North Gaza          | <b>89,456</b>  | 41                     | 10           | 110          | 78             | 5,208         | 2,510             | 17,621         | 24,418         | 21,248         | 11,450             | 6,762         |  |
| Gaza                | <b>164,728</b> | 93                     | 68           | 378          | 197            | 11,038        | 5,582             | 36,838         | 45,692         | 36,888         | 18,883             | 9,071         |  |
| Dier al Balah       | <b>70,689</b>  | 38                     | 13           | 88           | 112            | 6,220         | 4,147             | 16,229         | 17,425         | 13,439         | 7,636              | 5,342         |  |
| Khan Yunis          | <b>91,856</b>  | 15                     | 7            | 75           | 107            | 6,180         | 3,363             | 21,194         | 25,329         | 18,420         | 9,997              | 7,169         |  |
| Rafah               | <b>58,067</b>  | 35                     | 10           | 31           | 43             | 4,052         | 2,149             | 13,983         | 14,910         | 11,506         | 6,197              | 5,151         |  |

Table 9: Palestinian Population in Gaza Strip who's Completed Associate Diploma and Above by Governorate, Sex and Specialization, 2007

| Governorate and Sex | Specialization |                                    |                     |                              |                               |                                       |                                  |                                     |                 |            |   |                                |          |                   |  |
|---------------------|----------------|------------------------------------|---------------------|------------------------------|-------------------------------|---------------------------------------|----------------------------------|-------------------------------------|-----------------|------------|---|--------------------------------|----------|-------------------|--|
|                     | Computing      | Mathemat-<br>ics and<br>Statistics | Natural<br>Sciences | Life<br>Sciences<br>Programs | Law and<br>Jurisprud-<br>ence | Business<br>and<br>Adminstra-<br>tion | Journalism<br>and<br>Information | Social and<br>Behavioral<br>Science | Humanit-<br>ies | Arts       | Education<br>Science and<br>Teacher<br>Rehabilitation | ( )<br>Personal<br>Development | Literacy | Basic<br>Programs |  |
| <b>Both Sexes</b>   |                |                                    |                     |                              |                               |                                       |                                  |                                     |                 |            |   |                                |          |                   |  |
| <b>Gaza Strip</b>   | <b>5,654</b>   | <b>4,152</b>                       | <b>3,809</b>        | <b>1,271</b>                 | <b>3,318</b>                  | <b>21,073</b>                         | <b>3,771</b>                     | <b>13,620</b>                       | <b>24,320</b>   | <b>632</b> | <b>11,899</b>   | <b>35</b>                      | <b>1</b> | <b>41</b>         |  |
| North Gaza          | 838            | 784                                | 700                 | 231                          | 529                           | 3,153                                 | 594                              | 2,500                               | 4,100           | 74         | 1,855   | 2                              | -        | 1                 |  |
| Gaza                | 2,138          | 1,177                              | 1,234               | 415                          | 1,249                         | 8,853                                 | 1,499                            | 3,813                               | 7,008           | 191        | 3,709   | 10                             | -        | -                 |  |
| Dier al Balah       | 934            | 808                                | 658                 | 219                          | 476                           | 3,229                                 | 732                              | 2,598                               | 4,797           | 195        | 2,922   | 3                              | 1        | 1                 |  |
| Khan Yunis          | 1,016          | 857                                | 781                 | 294                          | 731                           | 3,822                                 | 590                              | 2,789                               | 4,915           | 96         | 1,852   | 10                             | -        | 1                 |  |
| Rafah               | 728            | 526                                | 436                 | 112                          | 333                           | 2,016                                 | 356                              | 1,920                               | 3,500           | 76         | 1,561   | 10                             | -        | 38                |  |
| <b>Males</b>        |                |                                    |                     |                              |                               |                                       |                                  |                                     |                 |            |   |                                |          |                   |  |
| <b>Gaza Strip</b>   | <b>3,438</b>   | <b>1,917</b>                       | <b>2,003</b>        | <b>568</b>                   | <b>2,839</b>                  | <b>13,624</b>                         | <b>2,338</b>                     | <b>8,135</b>                        | <b>10,463</b>   | <b>308</b> | <b>4,221</b>  | <b>18</b>                      | <b>1</b> | <b>2</b>          |  |
| North Gaza          | 552            | 382                                | 408                 | 120                          | 462                           | 2,188                                 | 397                              | 1,606                               | 1,878           | 48         | 646   | 1                              | -        | -                 |  |
| Gaza                | 1,333          | 561                                | 627                 | 176                          | 1,030                         | 5,785                                 | 942                              | 2,121                               | 2,829           | 107        | 1,311   | 6                              | -        | -                 |  |
| Dier al Balah       | 538            | 360                                | 311                 | 95                           | 402                           | 1,916                                 | 443                              | 1,494                               | 1,958           | 66         | 892   | 2                              | 1        | 1                 |  |
| Khan Yunis          | 590            | 376                                | 422                 | 132                          | 644                           | 2,393                                 | 334                              | 1,800                               | 2,212           | 51         | 713   | 5                              | -        | -                 |  |
| Rafah               | 425            | 238                                | 235                 | 45                           | 301                           | 1,342                                 | 222                              | 1,114                               | 1,586           | 36         | 659   | 4                              | -        | 1                 |  |
| <b>Females</b>      |                |                                    |                     |                              |                               |                                       |                                  |                                     |                 |            |   |                                |          |                   |  |
| <b>Gaza Strip</b>   | <b>2,216</b>   | <b>2,235</b>                       | <b>1,806</b>        | <b>703</b>                   | <b>479</b>                    | <b>7,449</b>                          | <b>1,433</b>                     | <b>5,485</b>                        | <b>13,857</b>   | <b>324</b> | <b>7,678</b>  | <b>17</b>                      | <b>-</b> | <b>39</b>         |  |
| North Gaza          | 286            | 402                                | 292                 | 111                          | 67                            | 965                                   | 197                              | 894                                 | 2,222           | 26         | 1,209   | 1                              | -        | 1                 |  |
| Gaza                | 805            | 616                                | 607                 | 239                          | 219                           | 3,068                                 | 557                              | 1,692                               | 4,179           | 84         | 2,398   | 4                              | -        | -                 |  |
| Dier al Balah       | 396            | 448                                | 347                 | 124                          | 74                            | 1,313                                 | 289                              | 1,104                               | 2,839           | 129        | 2,030   | 1                              | -        | -                 |  |
| Khan Yunis          | 426            | 481                                | 359                 | 162                          | 87                            | 1,429                                 | 256                              | 989                                 | 2,703           | 45         | 1,139   | 5                              | -        | 1                 |  |
| Rafah               | 303            | 288                                | 201                 | 67                           | 32                            | 674                                   | 134                              | 806                                 | 1,914           | 40         | 902   | 6                              | -        | 37                |  |

2007

:( ) 9

Table 9 (Cont.): Palestinian Population in Gaza Strip who's Completed Associate Diploma and Above by Governorate, Sex and Specialization, 2007

| Governorate and Sex | Total          | Specialization |                   |                          |                    |                   |                 |               |            |                                    |                            |                              |  |  |
|---------------------|----------------|----------------|-------------------|--------------------------|--------------------|-------------------|-----------------|---------------|------------|------------------------------------|----------------------------|------------------------------|--|--|
|                     |                | Not Stated     | Security Services | Environmental Protection | Transport Services | Personal Services | Social Services | Health        | Veterinary | Agricultural, Forestry and Fishery | Architectural and Building | Manufacturing and Processing | Engineering and Engineering Occupation |  |
| <b>Both Sexes</b>   |                |                |                   |                          |                    |                   |                 |               |            |                                    |                            |                              |  |  |
| <b>Gaza Strip</b>   | <b>122,300</b> | <b>1,064</b>   | <b>656</b>        | <b>40</b>                | <b>498</b>         | <b>1,369</b>      | <b>109</b>      | <b>13,575</b> | <b>115</b> | <b>1,087</b>                       | <b>4,289</b>               | <b>319</b>                   | <b>5,583</b>                           |  |
| North Gaza          | <b>20,132</b>  | 152            | 120               | 12                       | 87                 | 160               | 6               | 2,328         | 14         | 227                                | 700                        | 41                           | 924                                    |  |
| Gaza                | <b>41,873</b>  | 480            | 246               | 4                        | 200                | 400               | 19              | 4,588         | 48         | 384                                | 1,643                      | 94                           | 2,471                                  |  |
| Dier al Balah       | <b>22,215</b>  | 162            | 107               | 6                        | 96                 | 325               | 33              | 2,295         | 11         | 167                                | 646                        | 71                           | 723                                    |  |
| Khan Yunis          | <b>23,000</b>  | 189            | 121               | 8                        | 56                 | 247               | 48              | 2,485         | 25         | 205                                | 860                        | 69                           | 933                                    |  |
| Rafah               | <b>15,080</b>  | 81             | 62                | 10                       | 59                 | 237               | 3               | 1,879         | 17         | 104                                | 440                        | 44                           | 532                                    |  |
| <b>Males</b>        |                |                |                   |                          |                    |                   |                 |               |            |                                    |                            |                              |  |  |
| <b>Gaza Strip</b>   | <b>70,524</b>  | <b>622</b>     | <b>651</b>        | <b>30</b>                | <b>456</b>         | <b>590</b>        | <b>53</b>       | <b>8,420</b>  | <b>104</b> | <b>1,003</b>                       | <b>3,688</b>               | <b>158</b>                   | <b>4,874</b>                           |  |
| North Gaza          | <b>12,216</b>  | 86             | 119               | 11                       | 82                 | 63                | 2               | 1,490         | 14         | 209                                | 596                        | 25                           | 831                                    |  |
| Gaza                | <b>24,610</b>  | 285            | 245               | 2                        | 186                | 174               | 5               | 2,914         | 43         | 353                                | 1,373                      | 55                           | 2,147                                  |  |
| Dier al Balah       | <b>11,635</b>  | 88             | 105               | 2                        | 82                 | 133               | 18              | 1,340         | 10         | 154                                | 571                        | 23                           | 630                                    |  |
| Khan Yunis          | <b>13,268</b>  | 114            | 121               | 7                        | 50                 | 96                | 25              | 1,373         | 20         | 189                                | 758                        | 38                           | 805                                    |  |
| Rafah               | <b>8,795</b>   | 49             | 61                | 8                        | 56                 | 124               | 3               | 1,303         | 17         | 98                                 | 390                        | 17                           | 461                                    |  |
| <b>Females</b>      |                |                |                   |                          |                    |                   |                 |               |            |                                    |                            |                              |  |  |
| <b>Gaza Strip</b>   | <b>51,776</b>  | <b>442</b>     | <b>5</b>          | <b>10</b>                | <b>42</b>          | <b>779</b>        | <b>56</b>       | <b>5,155</b>  | <b>11</b>  | <b>84</b>                          | <b>601</b>                 | <b>161</b>                   | <b>709</b>                             |  |
| North Gaza          | <b>7,916</b>   | 66             | 1                 | 1                        | 5                  | 97                | 4               | 838           | -          | 18                                 | 104                        | 16                           | 93                                     |  |
| Gaza                | <b>17,263</b>  | 195            | 1                 | 2                        | 14                 | 226               | 14              | 1,674         | 5          | 31                                 | 270                        | 39                           | 324                                    |  |
| Dier al Balah       | <b>10,580</b>  | 74             | 2                 | 4                        | 14                 | 192               | 15              | 955           | 1          | 13                                 | 75                         | 48                           | 93                                     |  |
| Khan Yunis          | <b>9,732</b>   | 75             | -                 | 1                        | 6                  | 151               | 23              | 1,112         | 5          | 16                                 | 102                        | 31                           | 128                                    |  |
| Rafah               | <b>6,285</b>   | 32             | 1                 | 2                        | 3                  | 113               | -               | 576           | -          | 6                                  | 50                         | 27                           | 71                                     |  |

2007

( 10)

:10

Table 10: Palestinian Population (10 Years and Over) in Gaza Strip by Governorate, Sex and Activity Status, 2007

| Governorate and Sex | Total          | Activity Status |              |                                    |                              |                |                      |                         |                         |                        |                |                     |  |
|---------------------|----------------|-----------------|--------------|------------------------------------|------------------------------|----------------|----------------------|-------------------------|-------------------------|------------------------|----------------|---------------------|--|
|                     |                | Not Stated      | Others       | / Another Source of income/ Retire | / Disability/ aging/ illness | Housekeeping   | / Studying/ Training | Not Economically Active | Unemployed Never Worked | Unemployed Ever Worked | Employed       | Economically Active |  |
| <b>Both Sexes</b>   |                |                 |              |                                    |                              |                |                      |                         |                         |                        |                |                     |  |
| <b>Gaza Strip</b>   | <b>958,689</b> | <b>1,644</b>    | <b>6,954</b> | <b>6,044</b>                       | <b>49,391</b>                | <b>228,965</b> | <b>370,985</b>       | <b>662,339</b>          | <b>54,763</b>           | <b>53,597</b>          | <b>186,346</b> | <b>294,706</b>      |  |
| North Gaza          | 181,820        | 237             | 1,177        | 998                                | 8,594                        | 43,718         | 73,407               | 127,894                 | 8,686                   | 11,365                 | 33,638         | 53,689              |  |
| Gaza                | 333,458        | 617             | 2,523        | 2,575                              | 15,317                       | 82,305         | 125,815              | 228,535                 | 16,676                  | 19,431                 | 68,199         | 104,306             |  |
| Dier al Balah       | 141,528        | 208             | 922          | 884                                | 8,242                        | 31,418         | 55,340               | 96,806                  | 9,124                   | 6,776                  | 28,614         | 44,514              |  |
| Khan Yunis          | 185,685        | 229             | 1,567        | 988                                | 10,616                       | 44,138         | 70,780               | 128,089                 | 12,655                  | 11,150                 | 33,562         | 57,367              |  |
| Rafah               | 116,198        | 353             | 765          | 599                                | 6,622                        | 27,386         | 45,643               | 81,015                  | 7,622                   | 4,875                  | 22,333         | 34,830              |  |
| <b>Males</b>        |                |                 |              |                                    |                              |                |                      |                         |                         |                        |                |                     |  |
| <b>Gaza Strip</b>   | <b>483,893</b> | <b>1,304</b>    | <b>4,523</b> | <b>5,074</b>                       | <b>25,470</b>                | <b>608</b>     | <b>187,302</b>       | <b>222,977</b>          | <b>46,322</b>           | <b>51,543</b>          | <b>161,747</b> | <b>259,612</b>      |  |
| North Gaza          | 92,364         | 194             | 791          | 833                                | 4,520                        | 98             | 37,697               | 43,939                  | 7,586                   | 11,059                 | 29,586         | 48,231              |  |
| Gaza                | 168,730        | 524             | 1,591        | 2,146                              | 8,226                        | 179            | 63,200               | 75,342                  | 14,147                  | 18,814                 | 59,903         | 92,864              |  |
| Dier al Balah       | 70,839         | 150             | 631          | 767                                | 4,101                        | 123            | 27,580               | 33,202                  | 7,524                   | 6,357                  | 23,606         | 37,487              |  |
| Khan Yunis          | 93,829         | 187             | 1,018        | 850                                | 5,197                        | 111            | 35,845               | 43,021                  | 10,613                  | 10,698                 | 29,310         | 50,621              |  |
| Rafah               | 58,131         | 249             | 492          | 478                                | 3,426                        | 97             | 22,980               | 27,473                  | 6,452                   | 4,615                  | 19,342         | 30,409              |  |
| <b>Females</b>      |                |                 |              |                                    |                              |                |                      |                         |                         |                        |                |                     |  |
| <b>Gaza Strip</b>   | <b>474,796</b> | <b>340</b>      | <b>2,431</b> | <b>970</b>                         | <b>23,921</b>                | <b>228,357</b> | <b>183,683</b>       | <b>439,362</b>          | <b>8,441</b>            | <b>2,054</b>           | <b>24,599</b>  | <b>35,094</b>       |  |
| North Gaza          | 89,456         | 43              | 386          | 165                                | 4,074                        | 43,620         | 35,710               | 83,955                  | 1,100                   | 306                    | 4,052          | 5,458               |  |
| Gaza                | 164,728        | 93              | 932          | 429                                | 7,091                        | 82,126         | 62,615               | 153,193                 | 2,529                   | 617                    | 8,296          | 11,442              |  |
| Dier al Balah       | 70,689         | 58              | 291          | 117                                | 4,141                        | 31,295         | 27,760               | 63,604                  | 1,600                   | 419                    | 5,008          | 7,027               |  |
| Khan Yunis          | 91,856         | 42              | 549          | 138                                | 5,419                        | 44,027         | 34,935               | 85,068                  | 2,042                   | 452                    | 4,252          | 6,746               |  |
| Rafah               | 58,067         | 104             | 273          | 121                                | 3,196                        | 27,289         | 22,663               | 53,542                  | 1,170                   | 260                    | 2,991          | 4,421               |  |

2007

( 10)

:11

**Table 11: Employed and Unemployed Ever Worked Palestinian Population (10 Years and Over) in Gaza Strip by Governorate, Sex and Main Occupation, 2007**

| Governorate and Sex | Total          | Main Occupation |                        |   |                            |  |                            |              |   |               |                          |  |
|---------------------|----------------|-----------------|------------------------|---|----------------------------|--|----------------------------|--------------|---|---------------|--------------------------|--|
|                     |                | Not Stated      | Elementary Occupations | Plant, Machine Operators and Assemblers | Crafts and Related Workers | Skilled Agricultural and Fishery Workers | Services and Sales Workers | Clerks       | Technicians and Associate Professionals | Professionals | Legislators and Managers |  |
| <b>Both Sexes</b>   |                |                 |                        |   |                            |  |                            |              |   |               |                          |  |
| <b>Gaza Strip</b>   | <b>239,943</b> | <b>4,533</b>    | <b>38,457</b>          | <b>13,852</b>                           | <b>35,345</b>              | <b>4,799</b>                             | <b>62,417</b>              | <b>4,774</b> | <b>27,991</b>                           | <b>42,542</b> | <b>5,233</b>             |  |
| North Gaza          | <b>45,003</b>  | 1,000           | 8,456                  | 2,691                                   | 6,160                      | 917                                      | 12,050                     | 987          | 4,303                                   | 7,546         | 893                      |  |
| Gaza                | <b>87,630</b>  | 1,777           | 10,332                 | 5,360                                   | 17,524                     | 1,109                                    | 23,395                     | 1,950        | 8,826                                   | 14,942        | 2,415                    |  |
| Dier al Balah       | <b>35,390</b>  | 756             | 4,842                  | 1,884                                   | 4,195                      | 717                                      | 9,092                      | 634          | 5,258                                   | 7,360         | 652                      |  |
| Khan Yunis          | <b>44,712</b>  | 497             | 9,198                  | 2,485                                   | 5,222                      | 1,274                                    | 10,875                     | 812          | 5,813                                   | 7,736         | 800                      |  |
| Rafah               | <b>27,208</b>  | 503             | 5,629                  | 1,432                                   | 2,244                      | 782                                      | 7,005                      | 391          | 3,791                                   | 4,958         | 473                      |  |
| <b>Males</b>        |                |                 |                        |   |                            |  |                            |              |   |               |                          |  |
| <b>Gaza Strip</b>   | <b>213,290</b> | <b>4,128</b>    | <b>37,764</b>          | <b>13,828</b>                           | <b>34,655</b>              | <b>4,571</b>                             | <b>61,042</b>              | <b>3,928</b> | <b>21,388</b>                           | <b>27,709</b> | <b>4,277</b>             |  |
| North Gaza          | <b>40,645</b>  | 936             | 8,320                  | 2,688                                   | 6,060                      | 904                                      | 11,789                     | 819          | 3,260                                   | 5,110         | 759                      |  |
| Gaza                | <b>78,717</b>  | 1,620           | 10,146                 | 5,348                                   | 17,277                     | 1,102                                    | 22,911                     | 1,575        | 6,727                                   | 10,053        | 1,958                    |  |
| Dier al Balah       | <b>29,963</b>  | 656             | 4,701                  | 1,879                                   | 4,062                      | 704                                      | 8,865                      | 528          | 3,756                                   | 4,296         | 516                      |  |
| Khan Yunis          | <b>40,008</b>  | 456             | 9,085                  | 2,481                                   | 5,086                      | 1,251                                    | 10,643                     | 664          | 4,626                                   | 5,058         | 658                      |  |
| Rafah               | <b>23,957</b>  | 460             | 5,512                  | 1,432                                   | 2,170                      | 610                                      | 6,834                      | 342          | 3,019                                   | 3,192         | 386                      |  |
| <b>Females</b>      |                |                 |                        |   |                            |  |                            |              |   |               |                          |  |
| <b>Gaza Strip</b>   | <b>26,653</b>  | <b>405</b>      | <b>693</b>             | <b>24</b>                               | <b>690</b>                 | <b>228</b>                               | <b>1,375</b>               | <b>846</b>   | <b>6,603</b>                            | <b>14,833</b> | <b>956</b>               |  |
| North Gaza          | <b>4,358</b>   | 64              | 136                    | 3                                       | 100                        | 13                                       | 261                        | 168          | 1,043                                   | 2,436         | 134                      |  |
| Gaza                | <b>8,913</b>   | 157             | 186                    | 12                                      | 247                        | 7  | 484                        | 375          | 2,099                                   | 4,889         | 457                      |  |
| Dier al Balah       | <b>5,427</b>   | 100             | 141                    | 5                                       | 133                        | 13                                       | 227                        | 106          | 1,502                                   | 3,064         | 136                      |  |
| Khan Yunis          | <b>4,704</b>   | 41              | 113                    | 4                                       | 136                        | 23                                       | 232                        | 148          | 1,187                                   | 2,678         | 142                      |  |
| Rafah               | <b>3,251</b>   | 43              | 117                    | -                                       | 74                         | 172                                      | 171                        | 49           | 772                                     | 1,766         | 87                       |  |

2007

( 10)

:12

Table 12: Employed and Unemployed Ever Worked Palestinian Population (10 Years and Over) in Gaza Strip by Governorate, Sex and Economic Activity, 2007

| Governorate and Sex | المجموع<br>Total | Economic Activity |   |  |  |                        |               |                                   |  |                          |                                      |                        |                             |               |                                   |               |                      |              |                                    |  |
|---------------------|------------------|-------------------|---|--|--|------------------------|---------------|-----------------------------------|--|--------------------------|--------------------------------------|------------------------|-----------------------------|---------------|-----------------------------------|---------------|----------------------|--------------|------------------------------------|--|
|                     |                  | Not Stated        | Extraterritorial Organizations and Bodies | Private Households with Employed Persons | Other Community Social and Personal service Activities | Health and Social Work | Education     | Public Administration and Defense | Real-estate, Renting and Business Activities | Financial Intermediation | Transport, Storage and Communication | Hotels and Restaurants | Whole sale and Retail Trade | Construction  | Electricity, Gaz and Water Supply | Manufacturing | Mining and Quarrying | Fishing      | Agriculture , Hunting and Forestry |  |
| <b>Both Sexes</b>   |                  |                   |   |  |  |                        |               |                                   |  |                          |                                      |                        |                             |               |                                   |               |                      |              |                                    |  |
| <b>Gaza Strip</b>   | <b>239,943</b>   | <b>5,357</b>      | <b>3,137</b>                              | <b>210</b>                               | <b>6,174</b>   | <b>11,393</b>          | <b>27,971</b> | <b>71,454</b>                     | <b>2,750</b>                                 | <b>1,550</b>             | <b>13,658</b>                        | <b>2,128</b>           | <b>32,237</b>               | <b>26,096</b> | <b>983</b>                        | <b>19,607</b> | <b>27</b>            | <b>1,081</b> | <b>14,130</b>                      |  |
| North Gaza          | <b>45,003</b>    | 1,129             | 654                                       | 50                                       | 1,068  | 2,173                  | 4,858         | 13,921                            | 400  | 152                      | 2,444                                | 252                    | 5,203                       | 5,752         | 186                               | 4,003         | 5                    | 71           | 2,682                              |  |
| Gaza                | <b>87,630</b>    | 2,176             | 1,002                                     | 120                                      | 2,378  | 3,869                  | 8,144         | 23,772                            | 1,440  | 922                      | 5,322                                | 1,067                  | 15,463                      | 9,408         | 322                               | 10,119        | 6                    | 703          | 1,397                              |  |
| Dier al Balah       | <b>35,390</b>    | 861               | 725                                       | 16                                       | 1,082  | 1,805                  | 5,896         | 11,572                            | 302  | 165                      | 1,836                                | 277                    | 3,219                       | 3,051         | 205                               | 2,164         | 3                    | 131          | 2,080                              |  |
| Khan Yunis          | <b>44,712</b>    | 597               | 366                                       | 17                                       | 1,134  | 1,939                  | 5,231         | 13,584                            | 400  | 209                      | 2,592                                | 381                    | 5,653                       | 5,709         | 184                               | 2,227         | 9                    | 86           | 4,394                              |  |
| Rafah               | <b>27,208</b>    | 594               | 390                                       | 7  | 512  | 1,607                  | 3,842         | 8,605                             | 208  | 102                      | 1,464                                | 151                    | 2,699                       | 2,176         | 86                                | 1,094         | 4                    | 90           | 3,577                              |  |
| <b>Males</b>        |                  |                   |   |  |  |                        |               |                                   |  |                          |                                      |                        |                             |               |                                   |               |                      |              |                                    |  |
| <b>Gaza Strip</b>   | <b>213,290</b>   | <b>4,811</b>      | <b>2,553</b>                              | <b>195</b>                               | <b>4,129</b>   | <b>8,056</b>           | <b>14,652</b> | <b>67,316</b>                     | <b>2,451</b>                                 | <b>1,312</b>             | <b>13,370</b>                        | <b>2,103</b>           | <b>31,541</b>               | <b>26,027</b> | <b>933</b>                        | <b>18,927</b> | <b>27</b>            | <b>1,080</b> | <b>13,807</b>                      |  |
| North Gaza          | <b>40,645</b>    | 1,047             | 548                                       | 50                                       | 748  | 1,554                  | 2,678         | 13,242                            | 357  | 129                      | 2,410                                | 247                    | 5,074                       | 5,742         | 174                               | 3,902         | 5                    | 71           | 2,667                              |  |
| Gaza                | <b>78,717</b>    | 1,945             | 763                                       | 112                                      | 1,643  | 2,790                  | 4,285         | 22,091                            | 1,273  | 775                      | 5,155                                | 1,053                  | 15,206                      | 9,365         | 304                               | 9,869         | 6                    | 703          | 1,379                              |  |
| Dier al Balah       | <b>29,963</b>    | 737               | 601                                       | 13                                       | 647  | 1,180                  | 2,796         | 10,909                            | 273  | 146                      | 1,797                                | 274                    | 3,130                       | 3,046         | 200                               | 2,029         | 3                    | 131          | 2,051                              |  |
| Khan Yunis          | <b>40,008</b>    | 543               | 301                                       | 15                                       | 768  | 1,330                  | 2,788         | 12,862                            | 355  | 175                      | 2,560                                | 378                    | 5,511                       | 5,702         | 170                               | 2,100         | 9                    | 86           | 4,355                              |  |
| Rafah               | <b>23,957</b>    | 539               | 340                                       | 5  | 323  | 1,202                  | 2,105         | 8,212                             | 193  | 87                       | 1,448                                | 151                    | 2,620                       | 2,172         | 85                                | 1,027         | 4                    | 89           | 3,355                              |  |
| <b>Females</b>      |                  |                   |   |  |  |                        |               |                                   |  |                          |                                      |                        |                             |               |                                   |               |                      |              |                                    |  |
| <b>Gaza Strip</b>   | <b>26,653</b>    | <b>546</b>        | <b>584</b>                                | <b>15</b>                                | <b>2,045</b>   | <b>3,337</b>           | <b>13,319</b> | <b>4,138</b>                      | <b>299</b>                                   | <b>238</b>               | <b>288</b>                           | <b>25</b>              | <b>696</b>                  | <b>69</b>     | <b>50</b>                         | <b>680</b>    | <b>-</b>             | <b>1</b>     | <b>323</b>                         |  |
| North Gaza          | <b>4,358</b>     | 82                | 106                                       | -  | 320  | 619                    | 2,180         | 679                               | 43   | 23                       | 34                                   | 5                      | 129                         | 10            | 12                                | 101           | -                    | -            | 15                                 |  |
| Gaza                | <b>8,913</b>     | 231               | 239                                       | 8  | 735  | 1,079                  | 3,859         | 1,681                             | 167  | 147                      | 167                                  | 14                     | 257                         | 43            | 18                                | 250           | -                    | -            | 18                                 |  |
| Dier al Balah       | <b>5,427</b>     | 124               | 124                                       | 3  | 435  | 625                    | 3,100         | 663                               | 29   | 19                       | 39                                   | 3                      | 89                          | 5             | 5                                 | 135           | -                    | -            | 29                                 |  |
| Khan Yunis          | <b>4,704</b>     | 54                | 65  | 2  | 366  | 609                    | 2,443         | 722                               | 45   | 34                       | 32                                   | 3                      | 142                         | 7             | 14                                | 127           | -                    | -            | 39                                 |  |
| Rafah               | <b>3,251</b>     | 55                | 50  | 2  | 189  | 405                    | 1,737         | 393                               | 15   | 15                       | 16                                   | -                      | 79                          | 4             | 1                                 | 67            | -                    | 1            | 222                                |  |

**Table 13: Disabilities/Difficulties of Palestinian Population in Gaza Strip by Governorate, Sex and Type of Disability/Difficulty, 2007**

| Governorate and Sex | / | Type of Disability/Difficulty            |               |              |               |               | /             |
|---------------------|---|--|---------------|--------------|---------------|---------------|---------------|
|                     |   | Disabilities/<br>Difficulties<br>Persons | Communication | Cognition    | Moving        | Hearing       | Seeing        |
| <b>Both Sexes</b>   |   |  |               |              |               |               |               |
| <b>Gaza Strip</b>   |   | <b>51,432</b>                            | <b>8,477</b>  | <b>8,388</b> | <b>19,828</b> | <b>12,687</b> | <b>26,168</b> |
| North Gaza          |   | 9,799                                    | 1,706         | 1,720        | 3,796         | 2,210         | 4,926         |
| Gaza                |   | 15,407                                   | 2,483         | 2,605        | 6,054         | 3,752         | 7,642         |
| Dier al Balah       |   | 9,201                                    | 1,476         | 1,306        | 3,637         | 2,344         | 4,843         |
| Khan Yunis          |   | 10,864                                   | 1,741         | 1,761        | 4,120         | 2,715         | 5,720         |
| Rafah               |   | 6,161                                    | 1,071         | 996          | 2,221         | 1,666         | 3,037         |
| <b>Males</b>        |   |  |               |              |               |               |               |
| <b>Gaza Strip</b>   |   | <b>27,424</b>                            | <b>4,735</b>  | <b>4,680</b> | <b>9,882</b>  | <b>6,538</b>  | <b>13,237</b> |
| North Gaza          |   | 5,451                                    | 972           | 976          | 2,024         | 1,181         | 2,592         |
| Gaza                |   | 8,225                                    | 1,385         | 1,449        | 3,079         | 1,916         | 3,893         |
| Dier al Balah       |   | 4,762                                    | 842           | 725          | 1,694         | 1,195         | 2,367         |
| Khan Yunis          |   | 5,799                                    | 974           | 1,015        | 1,990         | 1,382         | 2,917         |
| Rafah               |   | 3,187                                    | 562           | 515          | 1,095         | 864           | 1,468         |
| <b>Females</b>      |   |  |               |              |               |               |               |
| <b>Gaza Strip</b>   |   | <b>24,008</b>                            | <b>3,742</b>  | <b>3,708</b> | <b>9,946</b>  | <b>6,149</b>  | <b>12,931</b> |
| North Gaza          |   | 4,348                                    | 734           | 744          | 1,772         | 1,029         | 2,334         |
| Gaza                |   | 7,182                                    | 1,098         | 1,156        | 2,975         | 1,836         | 3,749         |
| Dier al Balah       |   | 4,439                                    | 634           | 581          | 1,943         | 1,149         | 2,476         |
| Khan Yunis          |   | 5,065                                    | 767           | 746          | 2,130         | 1,333         | 2,803         |
| Rafah               |   | 2,974                                    | 509           | 481          | 1,126         | 802           | 1,569         |



2007

:14

Table 14: Foreign-Born Palestinian Population in Gaza Strip by Place of Birth, Sex and Age Group, 2007

|                  |            | Total  | Age Group  |     |         |         |         |         |         |         |         |         |       |    |  |                    |
|------------------|------------|--------|------------|-----|---------|---------|---------|---------|---------|---------|---------|---------|-------|----|--|--------------------|
|                  |            |        | Not Stated | +90 | 89 - 80 | 79 - 70 | 69 - 60 | 59 - 50 | 49 - 40 | 39 - 30 | 29 - 20 | 19 - 10 | 9 - 1 |    |  | Less Than One Year |
| Country of Birth | Sex        |        |            |     |         |         |         |         |         |         |         |         |       |    |  |                    |
| 1948 Areas*      | Both Sexes | 29,474 | 19         | 528 | 3,050   | 10,456  | 15,421  | -       | -       | -       | -       | -       | -     | -  |  | *1948              |
|                  | Males      | 12,493 | 6          | 195 | 1,232   | 4,348   | 6,712   | -       | -       | -       | -       | -       | -     | -  |  |                    |
|                  | Females    | 16,981 | 13         | 333 | 1,818   | 6,108   | 8,709   | -       | -       | -       | -       | -       | -     | -  |  |                    |
| Israel           | Both Sexes | 4,104  | -          | -   | -       | -       | -       | 3,444   | 275     | 142     | 89      | 67      | 85    | 2  |  |                    |
|                  | Males      | 1,834  | -          | -   | -       | -       | -       | 1,580   | 109     | 47      | 23      | 31      | 43    | 1  |  |                    |
|                  | Females    | 2,270  | -          | -   | -       | -       | -       | 1,864   | 166     | 95      | 66      | 36      | 42    | 1  |  |                    |
| Jordan           | Both Sexes | 6,135  | 2          | -   | 4       | 2       | 20      | 113     | 401     | 1,900   | 2,021   | 1,426   | 243   | 3  |  |                    |
|                  | Males      | 2,596  | 2          | -   | -       | 1       | 9       | 18      | 74      | 772     | 859     | 739     | 121   | 1  |  |                    |
|                  | Females    | 3,539  | -          | -   | 4       | 1       | 11      | 95      | 327     | 1,128   | 1,162   | 687     | 122   | 2  |  |                    |
| Syria            | Both Sexes | 2,134  | -          | 1   | 7       | 17      | 10      | 130     | 200     | 516     | 768     | 440     | 43    | 2  |  |                    |
|                  | Males      | 985    | -          | -   | 2       | -       | 4       | 31      | 84      | 242     | 378     | 221     | 22    | 1  |  |                    |
|                  | Females    | 1,149  | -          | 1   | 5       | 17      | 6       | 99      | 116     | 274     | 390     | 219     | 21    | 1  |  |                    |
| Lebanon          | Both Sexes | 1,520  | -          | -   | 2       | 11      | 17      | 191     | 247     | 323     | 643     | 71      | 15    | -  |  |                    |
|                  | Males      | 611    | -          | -   | -       | -       | 7       | 30      | 50      | 162     | 326     | 30      | 6     | -  |  |                    |
|                  | Females    | 909    | -          | -   | 2       | 11      | 10      | 161     | 197     | 161     | 317     | 41      | 9     | -  |  |                    |
| Egypt            | Both Sexes | 15,826 | 8          | 16  | 96      | 189     | 411     | 1,304   | 1,647   | 4,415   | 4,128   | 3,068   | 534   | 10 |  |                    |
|                  | Males      | 7,374  | 3          | 1   | 11      | 20      | 42      | 401     | 672     | 2,400   | 2,008   | 1,535   | 276   | 5  |  |                    |
|                  | Females    | 8,452  | 5          | 15  | 85      | 169     | 369     | 903     | 975     | 2,015   | 2,120   | 1,533   | 258   | 5  |  |                    |
| Tunisia          | Both Sexes | 330    | -          | -   | -       | -       | 1       | 1       | 16      | 11      | 103     | 191     | 7     | -  |  |                    |
|                  | Males      | 154    | -          | -   | -       | -       | 1       | -       | -       | 2       | 52      | 95      | 4     | -  |  |                    |
|                  | Females    | 176    | -          | -   | -       | -       | -       | 1       | 16      | 9       | 51      | 96      | 3     | -  |  |                    |

2007

:( ) 14

Table 14(Cont.): Foreign-Born Palestinian Population in Gaza Strip by Place of Birth, Sex and Age Group, 2007

| Country of Birth         | Sex        | Total   | Age Group  |     |         |         |         |         |         |         |         |         |       |                    |  |  |
|--------------------------|------------|---------|------------|-----|---------|---------|---------|---------|---------|---------|---------|---------|-------|--------------------|--|--|
|                          |            |         | Not Stated | +90 | 89 - 80 | 79 - 70 | 69 - 60 | 59 - 50 | 49 - 40 | 39 - 30 | 29 - 20 | 19 - 10 | 9 - 1 | Less Than One Year |  |  |
| Yemen                    | Both Sexes | 986     | -          | -   | -       | -       | 3       | 6       | 10      | 41      | 372     | 523     | 29    | 2                  |  |  |
|                          | Males      | 512     | -          | -   | -       | -       | 3       | 1       | 4       | 15      | 204     | 269     | 15    | 1                  |  |  |
|                          | Females    | 474     | -          | -   | -       | -       | -       | 5       | 6       | 26      | 168     | 254     | 14    | 1                  |  |  |
| Gulf Countries           | Both Sexes | 31,224  | 37         | 1   | 1       | 7       | 26      | 172     | 943     | 3,098   | 13,472  | 12,135  | 1,301 | 31                 |  |  |
|                          | Males      | 15,088  | 19         | 1   | 1       | 4       | 13      | 88      | 373     | 1,239   | 6,516   | 6,175   | 649   | 10                 |  |  |
|                          | Females    | 16,136  | 18         | -   | -       | 3       | 13      | 84      | 570     | 1,859   | 6,956   | 5,960   | 652   | 21                 |  |  |
| Other Arab Countries     | Both Sexes | 11,573  | 2          | -   | 5       | 4       | 15      | 38      | 154     | 2,027   | 5,031   | 4,095   | 199   | 3                  |  |  |
|                          | Males      | 5,755   | 1          | -   | 2       | 2       | 5       | 12      | 56      | 933     | 2,558   | 2,086   | 97    | 3                  |  |  |
|                          | Females    | 5,818   | 1          | -   | 3       | 2       | 10      | 26      | 98      | 1,094   | 2,473   | 2,009   | 102   | -                  |  |  |
| United States of America | Both Sexes | 232     | -          | -   | -       | -       | -       | -       | -       | 2       | 32      | 106     | 88    | 4                  |  |  |
|                          | Males      | 101     | -          | -   | -       | -       | -       | -       | -       | -       | 8       | 49      | 42    | 2                  |  |  |
|                          | Females    | 131     | -          | -   | -       | -       | -       | -       | -       | 2       | 24      | 57      | 46    | 2                  |  |  |
| Others                   | Both Sexes | 1,808   | 5          | -   | 3       | 5       | 5       | 23      | 62      | 144     | 243     | 677     | 600   | 41                 |  |  |
|                          | Males      | 813     | 2          | -   | -       | -       | 2       | 7       | 7       | 31      | 103     | 338     | 307   | 16                 |  |  |
|                          | Females    | 995     | 3          | -   | 3       | 5       | 3       | 16      | 55      | 113     | 140     | 339     | 293   | 25                 |  |  |
| Not Stated               | Both Sexes | 3       | -          | -   | -       | 1       | -       | -       | 1       | -       | -       | 1       | -     | -                  |  |  |
|                          | Males      | 1       | -          | -   | -       | 1       | -       | -       | -       | -       | -       | -       | -     | -                  |  |  |
|                          | Females    | 2       | -          | -   | -       | -       | -       | -       | 1       | -       | -       | 1       | -     | -                  |  |  |
| Total                    | Both Sexes | 105,349 | 73         | 546 | 3,168   | 10,692  | 15,929  | 5,422   | 3,956   | 12,619  | 26,902  | 22,800  | 3,144 | 98                 |  |  |
|                          | Males      | 48,317  | 33         | 197 | 1,248   | 4,376   | 6,798   | 2,168   | 1,429   | 5,843   | 13,035  | 11,568  | 1,582 | 40                 |  |  |
|                          | Females    | 57,032  | 40         | 349 | 1,920   | 6,316   | 9,131   | 3,254   | 2,527   | 6,776   | 13,867  | 11,232  | 1,562 | 58                 |  |  |

\*\* 1948 Areas: Includes those parts of historic Palestine which is known now as Israel, as defined after the 1948 war.

.1948

:1948

\*

2007

:15

**Table 15: Private Households in Gaza Strip by Governorate and Household Size, 2007**

| Governorate       | Total          | Household Size |               |               |               |               |               |               |               |               |               |              |  |
|-------------------|----------------|----------------|---------------|---------------|---------------|---------------|---------------|---------------|---------------|---------------|---------------|--------------|--|
|                   |                | +11            | 10            | 9             | 8             | 7             | 6             | 5             | 4             | 3             | 2             | 1            |  |
| <b>Gaza Strip</b> | <b>214,760</b> | <b>19,695</b>  | <b>12,855</b> | <b>18,792</b> | <b>24,291</b> | <b>26,499</b> | <b>26,657</b> | <b>24,246</b> | <b>21,350</b> | <b>17,294</b> | <b>17,619</b> | <b>5,462</b> |  |
| North Gaza        | <b>39,604</b>  | 4,182          | 2,528         | 3,799         | 4,592         | 4,937         | 4,955         | 4,309         | 3,713         | 2,965         | 2,893         | 731          |  |
| Gaza              | <b>75,023</b>  | 6,799          | 4,249         | 6,255         | 8,466         | 9,379         | 9,688         | 8,873         | 7,685         | 5,869         | 5,965         | 1,795        |  |
| Dier al Balah     | <b>31,340</b>  | 2,717          | 1,889         | 2,812         | 3,563         | 3,929         | 3,789         | 3,417         | 3,055         | 2,640         | 2,697         | 832          |  |
| Khan Yunis        | <b>42,402</b>  | 3,520          | 2,512         | 3,623         | 4,628         | 5,075         | 5,052         | 4,816         | 4,339         | 3,670         | 3,853         | 1,314        |  |
| Rafah             | <b>26,391</b>  | 2,477          | 1,677         | 2,303         | 3,042         | 3,179         | 3,173         | 2,831         | 2,558         | 2,150         | 2,211         | 790          |  |

2007

:16

**Table 16: Private Palestinian Households in Gaza Strip by Governorate and type of Household, 2007**

| Governorate   | Total      |         | Household Type |        |                     |        |                    |        |                   |         |                      |        |  |
|---------------|------------|---------|----------------|--------|---------------------|--------|--------------------|--------|-------------------|---------|----------------------|--------|--|
|               |            |         | Not Stated     |        | Composite Household |        | Extended Household |        | Nuclear Household |         | One Person Household |        |  |
|               | Percentage | Number  | Percentage     | Number | Percentage          | Number | Percentage         | Number | Percentage        | Number  | Percentage           | Number |  |
| Gaza Strip    | 100        | 213,710 | 0.0            | 30     | 0.2                 | 492    | 19.4               | 41,517 | 77.8              | 166,296 | 2.5                  | 5,375  |  |
| North Gaza    | 100        | 39,579  | 0.0            | 2      | 0.2                 | 96     | 20.5               | 8,109  | 77.4              | 30,644  | 1.8                  | 728    |  |
| Gaza          | 100        | 74,525  | 0.0            | 11     | 0.2                 | 142    | 19.8               | 14,782 | 77.6              | 57,837  | 2.4                  | 1,753  |  |
| Dier al Balah | 100        | 31,217  | 0.0            | 7      | 0.2                 | 65     | 19.7               | 6,135  | 77.5              | 24,188  | 2.6                  | 822    |  |
| Khan Yunis    | 100        | 42,328  | 0.0            | 3      | 0.3                 | 111    | 17.8               | 7,544  | 78.8              | 33,366  | 3.1                  | 1,304  |  |
| Rafah         | 100        | 26,061  | 0.0            | 7      | 0.3                 | 78     | 19.0               | 4,947  | 77.7              | 20,261  | 2.9                  | 768    |  |

**Table 17: Heads of Palestinian Households (10 Years and Over) in Gaza Strip by Age Group, Sex and Activity Status, 2007**

| Age and Sex of<br>Heads of Households | Total          | Activity Status of Heads of Households |                            |                     |         |
|---------------------------------------|----------------|--|----------------------------|---------------------|---------|
|                                       |                | Not Stated                             | Not Economically<br>Active | Economically Active |         |
| <b>Both Sexes</b>                     |                |  |                            |                     |         |
| 10 - 14                               | 4              | -                                      | 3                          | 1                   | 14 - 10 |
| 15 - 19                               | 519            | 1                                      | 184                        | 334                 | 19 - 15 |
| 20 - 24                               | 7,960          | 18                                     | 861                        | 7,081               | 24 - 20 |
| 25 - 29                               | 25,933         | 39                                     | 976                        | 24,918              | 29 - 25 |
| 30 - 34                               | 34,772         | 41                                     | 1,341                      | 33,390              | 34 - 30 |
| 35 - 39                               | 30,849         | 35                                     | 1,674                      | 29,140              | 39 - 35 |
| 40 - 44                               | 31,410         | 48                                     | 2,506                      | 28,856              | 44 - 40 |
| 45 - 49                               | 23,542         | 36                                     | 3,073                      | 20,433              | 49 - 45 |
| 50 - 54                               | 17,717         | 37                                     | 3,911                      | 13,769              | 54 - 50 |
| 55 - 59                               | 14,691         | 23                                     | 5,158                      | 9,510               | 59 - 55 |
| 60 - 64                               | 9,606          | 12                                     | 6,924                      | 2,670               | 64 - 60 |
| 65+                                   | 16,626         | 13                                     | 14,942                     | 1,671               | +65     |
| Not Stated                            | 81             | 7                                      | 25                         | 49                  |         |
| <b>Total</b>                          | <b>213,710</b> | <b>310</b>                             | <b>41,578</b>              | <b>171,822</b>      |         |
| <b>Males</b>                          |                |  |                            |                     |         |
| 10 - 14                               | 3              | -                                      | 2                          | 1                   | 14 - 10 |
| 15 - 19                               | 465            | 1                                      | 132                        | 332                 | 19 - 15 |
| 20 - 24                               | 7,705          | 16                                     | 629                        | 7,060               | 24 - 20 |
| 25 - 29                               | 25,361         | 38                                     | 490                        | 24,833              | 29 - 25 |
| 30 - 34                               | 33,839         | 40                                     | 567                        | 33,232              | 34 - 30 |
| 35 - 39                               | 29,625         | 35                                     | 709                        | 28,881              | 39 - 35 |
| 40 - 44                               | 29,778         | 46                                     | 1,189                      | 28,543              | 44 - 40 |
| 45 - 49                               | 21,675         | 35                                     | 1,499                      | 20,141              | 49 - 45 |
| 50 - 54                               | 15,680         | 35                                     | 2,146                      | 13,499              | 54 - 50 |
| 55 - 59                               | 12,602         | 22                                     | 3,304                      | 9,276               | 59 - 55 |
| 60 - 64                               | 7,830          | 10                                     | 5,206                      | 2,614               | 64 - 60 |
| 65+                                   | 11,881         | 8                                      | 10,265                     | 1,608               | +65     |
| Not Stated                            | 66             | 7                                      | 12                         | 47                  |         |
| <b>Total</b>                          | <b>196,510</b> | <b>293</b>                             | <b>26,150</b>              | <b>170,067</b>      |         |
| <b>Females</b>                        |                |  |                            |                     |         |
| 10 - 14                               | 1              | -                                      | 1                          | -                   | 14 - 10 |
| 15 - 19                               | 54             | -                                      | 52                         | 2                   | 19 - 15 |
| 20 - 24                               | 255            | 2                                      | 232                        | 21                  | 24 - 20 |
| 25 - 29                               | 572            | 1                                      | 486                        | 85                  | 29 - 25 |
| 30 - 34                               | 933            | 1                                      | 774                        | 158                 | 34 - 30 |
| 35 - 39                               | 1,224          | -                                      | 965                        | 259                 | 39 - 35 |
| 40 - 44                               | 1,632          | 2                                      | 1,317                      | 313                 | 44 - 40 |
| 45 - 49                               | 1,867          | 1                                      | 1,574                      | 292                 | 49 - 45 |
| 50 - 54                               | 2,037          | 2                                      | 1,765                      | 270                 | 54 - 50 |
| 55 - 59                               | 2,089          | 1                                      | 1,854                      | 234                 | 59 - 55 |
| 60 - 64                               | 1,776          | 2                                      | 1,718                      | 56                  | 64 - 60 |
| 65+                                   | 4,745          | 5                                      | 4,677                      | 63                  | +65     |
| Not Stated                            | 15             | -                                      | 13                         | 2                   |         |
| <b>Total</b>                          | <b>17,200</b>  | <b>17</b>                              | <b>15,428</b>              | <b>1,755</b>        |         |

2007

:18

**Table 18: Households in Gaza Strip by Governorate and Availability of Durable Goods to the Household, 2007**

| Governorate       | No. of Households | Availability of Durable Goods |                 |                  |                |                   |               |                 |               |                           |                |                 |                |                |               |  |
|-------------------|-------------------|-------------------------------|-----------------|------------------|----------------|-------------------|---------------|-----------------|---------------|---------------------------|----------------|-----------------|----------------|----------------|---------------|--|
|                   |                   | Phone Line                    | Satellite/ Dish | DVD / Video/ DVD | T.V            | / Radio/ Recorder | Home Library  | Washing Machine | Microwave     | / Gas Cooker/ Electricity | Vacuum Cleaner | Central Heating | Solar Boiler   | Refrigerator   | Private Car   |  |
| <b>Gaza Strip</b> | <b>214,760</b>    | <b>80,856</b>                 | <b>171,207</b>  | <b>22,849</b>    | <b>198,327</b> | <b>161,202</b>    | <b>41,658</b> | <b>196,569</b>  | <b>31,366</b> | <b>212,289</b>            | <b>35,410</b>  | <b>2,969</b>    | <b>147,482</b> | <b>195,231</b> | <b>25,952</b> |  |
| North Gaza        | <b>39,604</b>     | 13,822                        | 31,328          | 4,269            | 36,889         | 32,171            | 8,101         | 36,578          | 5,445         | 39,318                    | 4,642          | 452             | 31,555         | 36,477         | 4,710         |  |
| Gaza              | <b>75,023</b>     | 34,569                        | 64,123          | 11,113           | 70,874         | 59,876            | 14,308        | 70,760          | 15,158        | 74,305                    | 18,721         | 1,345           | 51,697         | 70,070         | 12,481        |  |
| Dier al Balah     | <b>31,340</b>     | 11,252                        | 24,905          | 2,678            | 29,035         | 22,894            | 6,906         | 28,252          | 4,005         | 30,976                    | 3,692          | 255             | 22,570         | 27,884         | 3,089         |  |
| Khan Yunis        | <b>42,402</b>     | 12,985                        | 30,015          | 2,798            | 37,564         | 29,399            | 8,057         | 37,598          | 3,648         | 41,935                    | 5,589          | 517             | 25,875         | 37,618         | 3,434         |  |
| Rafah             | <b>26,391</b>     | 8,228                         | 20,836          | 1,991            | 23,965         | 16,862            | 4,286         | 23,381          | 3,110         | 25,755                    | 2,766          | 400             | 15,785         | 23,182         | 2,238         |  |

2007

:19

**Table 19: Households and Persons in Gaza Strip by Governorate and Tenure of Housing Unit, 2007**

| Governorate   |            | Total     | Tenure of Housing Unit |        |          |                 |                  |                     | المحافظة  |  |
|---------------|------------|-----------|------------------------|--------|----------|-----------------|------------------|---------------------|-----------|--|
|               |            |           | Not Stated             | Others | For Work | Without Payment | Rented Furnished | Rented Un-Furnished |           |  |
| Gaza Strip    | Households | 214,760   | 1,118                  | 558    | 580      | 23,158          | 1,646            | 13,884              | 173,816   |  |
|               | Persons    | 1,387,249 | 7,004                  | 3,670  | 3,829    | 134,100         | 9,393            | 75,717              | 1,153,536 |  |
| North Gaza    | Households | 39,604    | 66                     | 102    | 86       | 4,363           | 201              | 1,988               | 32,798    |  |
|               | Persons    | 265,355   | 385                    | 636    | 607      | 24,859          | 1,190            | 10,891              | 226,787   |  |
| Gaza          | Households | 75,023    | 518                    | 224    | 227      | 9,794           | 813              | 5,644               | 57,803    |  |
|               | Persons    | 484,628   | 3,079                  | 1,528  | 1,454    | 59,898          | 4,526            | 30,578              | 383,565   |  |
| Dier al Balah | Households | 31,340    | 136                    | 66     | 99       | 2,465           | 226              | 1,865               | 26,483    |  |
|               | Persons    | 200,689   | 766                    | 513    | 651      | 13,146          | 1,250            | 9,666               | 174,697   |  |
| Khan Yunis    | Households | 42,402    | 80                     | 146    | 90       | 4,163           | 213              | 2,016               | 35,694    |  |
|               | Persons    | 265,953   | 422                    | 863    | 607      | 23,022          | 1,233            | 10,579              | 229,227   |  |
| Rafah         | Households | 26,391    | 318                    | 20     | 78       | 2,373           | 193              | 2,371               | 21,038    |  |
|               | Persons    | 170,624   | 2,352                  | 130    | 510      | 13,175          | 1,194            | 14,003              | 139,260   |  |

2007

:20

**Table 20: Occupied Housing Units and Persons in Gaza Strip by Governorate and Type of Housing Unit, 2007**

| Governorate   |               | Total     | Type of Housing Unit |        |          |      |                  |           |         |        | المحافظة |  |
|---------------|---------------|-----------|----------------------|--------|----------|------|------------------|-----------|---------|--------|----------|--|
|               |               |           | Not Stated           | Others | Marginal | Tent | Independent Room | Apartment | House   | Villa  |          |  |
| Gaza Strip    | Housing Units | 214,760   | 889                  | 86     | 625      | 140  | 160              | 130,855   | 78,686  | 3,319  |          |  |
|               | Persons       | 1,387,249 | 5,700                | 571    | 3,641    | 579  | 396              | 791,510   | 562,363 | 22,489 |          |  |
| North Gaza    | Housing Units | 39,604    | 22                   | 37     | 247      | 25   | 14               | 23,387    | 15,188  | 684    |          |  |
|               | Persons       | 265,355   | 146                  | 260    | 1,490    | 117  | 36               | 144,364   | 114,139 | 4,803  |          |  |
| Gaza          | Housing Units | 75,023    | 397                  | 9      | 67       | 13   | 27               | 55,881    | 17,733  | 896    |          |  |
|               | Persons       | 484,628   | 2,355                | 73     | 419      | 65   | 92               | 342,744   | 133,037 | 5,843  |          |  |
| Dier al Balah | Housing Units | 31,340    | 107                  | 7      | 68       | 10   | 41               | 15,686    | 14,888  | 533    |          |  |
|               | Persons       | 200,689   | 606                  | 35     | 483      | 34   | 86               | 91,267    | 104,448 | 3,730  |          |  |
| Khan Yunis    | Housing Units | 42,402    | 60                   | 19     | 99       | 60   | 45               | 22,751    | 18,657  | 711    |          |  |
|               | Persons       | 265,953   | 319                  | 125    | 553      | 270  | 92               | 134,289   | 125,617 | 4,688  |          |  |
| Rafah         | Housing Units | 26,391    | 303                  | 14     | 144      | 32   | 33               | 13,150    | 12,220  | 495    |          |  |
|               | Persons       | 170,624   | 2,274                | 78     | 696      | 93   | 90               | 78,846    | 85,122  | 3,425  |          |  |



Table 21: Occupied Housing Units and Persons in Gaza Strip by Governorate and Number of Rooms in The Housing Unit, 2007

| Governorate       |                      | Average Number of Persons Per Room | Total            | Number of Rooms |                |                |                |                |                |               | المحافظة |  |
|-------------------|----------------------|------------------------------------|------------------|-----------------|----------------|----------------|----------------|----------------|----------------|---------------|----------|--|
|                   |                      |                                    |                  | Not Stated      | +6             | 5              | 4              | 3              | 2              | 1             |          |  |
| <b>Gaza Strip</b> | <b>Housing Units</b> | <b>1.8</b>                         | <b>214,760</b>   | <b>1,418</b>    | <b>12,641</b>  | <b>32,225</b>  | <b>66,993</b>  | <b>64,378</b>  | <b>29,997</b>  | <b>7,108</b>  |          |  |
|                   | <b>Persons</b>       | <b>-</b>                           | <b>1,387,249</b> | <b>9,152</b>    | <b>113,002</b> | <b>239,046</b> | <b>457,512</b> | <b>388,513</b> | <b>152,493</b> | <b>27,531</b> |          |  |
| North Gaza        | Housing Units        | 1.8                                | 39,604           | 145             | 2,554          | 6,775          | 13,339         | 11,014         | 4,676          | 1,101         |          |  |
|                   | Persons              | -                                  | 265,355          | 968             | 23,629         | 51,709         | 93,546         | 67,786         | 23,531         | 4,186         |          |  |
| Gaza              | Housing Units        | 1.8                                | 75,023           | 559             | 3,962          | 10,048         | 22,783         | 24,236         | 11,094         | 2,341         |          |  |
|                   | Persons              | -                                  | 484,628          | 3,407           | 35,387         | 72,834         | 155,754        | 148,324        | 59,089         | 9,833         |          |  |
| Dier al Balah     | Housing Units        | 1.8                                | 31,340           | 214             | 2,210          | 4,826          | 9,297          | 8,937          | 4,632          | 1,224         |          |  |
|                   | Persons              | -                                  | 200,689          | 1,263           | 19,261         | 36,209         | 63,176         | 53,382         | 22,815         | 4,583         |          |  |
| Khan Yunis        | Housing Units        | 1.7                                | 42,402           | 117             | 2,443          | 6,663          | 13,797         | 12,535         | 5,470          | 1,377         |          |  |
|                   | Persons              | -                                  | 265,953          | 703             | 20,904         | 48,367         | 91,224         | 73,223         | 26,423         | 5,109         |          |  |
| Rafah             | Housing Units        | 1.8                                | 26,391           | 383             | 1,472          | 3,913          | 7,777          | 7,656          | 4,125          | 1,065         |          |  |
|                   | Persons              | -                                  | 170,624          | 2,811           | 13,821         | 29,927         | 53,812         | 45,798         | 20,635         | 3,820         |          |  |

2007 ( )

:22

**Table 22: Occupied Housing Units in Gaza Strip by Governorate and Availability of Public Services (Water, Electricity and Sewage), 2007**

| Governorate       | Total          | Availability of General Services |               |             |                  |            |                           |                |                          |                              |  |
|-------------------|----------------|----------------------------------|---------------|-------------|------------------|------------|---------------------------|----------------|--------------------------|------------------------------|--|
|                   |                | Not Stated                       | Not Connected | Sewage Only | Electricity Only | Water Only | Electricity & Sewage Only | Water & Sewage | Water & Electricity Only | Water & Electricity & Sewage |  |
| <b>Gaza Strip</b> | <b>214,760</b> | <b>863</b>                       | <b>552</b>    | <b>33</b>   | <b>6,114</b>     | <b>268</b> | <b>1,346</b>              | <b>401</b>     | <b>40,068</b>            | <b>165,115</b>               |  |
| North Gaza        | <b>39,604</b>  | 16                               | 51            | 5           | 282              | 25         | 162                       | 30             | 2,098                    | 36,935                       |  |
| Gaza              | <b>75,023</b>  | 381                              | 65            | 6           | 639              | 12         | 528                       | 40             | 2,333                    | 71,019                       |  |
| Dier al Balah     | <b>31,340</b>  | 108                              | 49            | 10          | 1,283            | 30         | 282                       | 43             | 3,744                    | 25,791                       |  |
| Khan Yunis        | <b>42,402</b>  | 57                               | 175           | 4           | 2,629            | 123        | 137                       | 236            | 27,996                   | 11,045                       |  |
| Rafah             | <b>26,391</b>  | 301                              | 212           | 8           | 1,281            | 78         | 237                       | 52             | 3,897                    | 20,325                       |  |

**Table 23: Occupied Housing Units and Persons in Gaza Strip by Governorate and Main Source of Water in The Housing Unit, 2007**

| Governorate       |                      | Total            | Main Source of water |               |                    |            |                                |                   |  |  |
|-------------------|----------------------|------------------|----------------------|---------------|--------------------|------------|--------------------------------|-------------------|--|--|
|                   |                      |                  | Not Stated           | Other         | ( )<br>Water Tanks | Springs    | Well (to gather<br>rain water) | Public<br>Network |  |  |
| <b>Gaza Strip</b> | <b>Housing Units</b> | <b>214,760</b>   | <b>893</b>           | <b>6,112</b>  | <b>349</b>         | <b>110</b> | <b>1,444</b>                   | <b>205,852</b>    |  |  |
|                   | <b>Persons</b>       | <b>1,387,249</b> | <b>5,666</b>         | <b>38,750</b> | <b>2,033</b>       | <b>747</b> | <b>9,607</b>                   | <b>1,330,446</b>  |  |  |
| North Gaza        | Housing Units        | 39,604           | 19                   | 378           | 47                 | 12         | 60                             | 39,088            |  |  |
|                   | Persons              | 265,355          | 106                  | 2,391         | 233                | 81         | 442                            | 262,102           |  |  |
| Gaza              | Housing Units        | 75,023           | 385                  | 902           | 58                 | 20         | 254                            | 73,404            |  |  |
|                   | Persons              | 484,628          | 2,263                | 5,829         | 443                | 146        | 1,768                          | 474,179           |  |  |
| Dier al Balah     | Housing Units        | 31,340           | 113                  | 1,317         | 48                 | 29         | 225                            | 29,608            |  |  |
|                   | Persons              | 200,689          | 636                  | 8,140         | 305                | 174        | 1,516                          | 189,918           |  |  |
| Khan Yunis        | Housing Units        | 42,402           | 70                   | 2,440         | 62                 | 44         | 386                            | 39,400            |  |  |
|                   | Persons              | 265,953          | 356                  | 15,606        | 348                | 311        | 2,552                          | 246,780           |  |  |
| Rafah             | Housing Units        | 26,391           | 306                  | 1,075         | 134                | 5          | 519                            | 24,352            |  |  |
|                   | Persons              | 170,624          | 2,305                | 6,784         | 704                | 35         | 3,329                          | 157,467           |  |  |

2007

:24

**Table 24: Occupied Housing Units and Persons in Gaza Strip by Governorate and Availability of Electricity in The Housing Unit,**

| Governorate       |                      | Total            | Availability of Electricity |                |                   |                  |  |  |
|-------------------|----------------------|------------------|-----------------------------|----------------|-------------------|------------------|--|--|
|                   |                      |                  | Not Stated                  | No Electricity | Private Generator | Public Network   |  |  |
| <b>Gaza Strip</b> | <b>Housing Units</b> | <b>214,760</b>   | <b>867</b>                  | <b>753</b>     | <b>497</b>        | <b>212,643</b>   |  |  |
|                   | <b>Persons</b>       | <b>1,387,249</b> | <b>5,497</b>                | <b>3,895</b>   | <b>3,061</b>      | <b>1,374,796</b> |  |  |
| North Gaza        | Housing Units        | 39,604           | 16                          | 63             | 48                | 39,477           |  |  |
|                   | Persons              | 265,355          | 83                          | 304            | 296               | 264,672          |  |  |
| Gaza              | Housing Units        | 75,023           | 382                         | 67             | 55                | 74,519           |  |  |
|                   | Persons              | 484,628          | 2,243                       | 408            | 345               | 481,632          |  |  |
| Dier al Balah     | Housing Units        | 31,340           | 108                         | 85             | 47                | 31,100           |  |  |
|                   | Persons              | 200,689          | 605                         | 379            | 351               | 199,354          |  |  |
| Khan Yunis        | Housing Units        | 42,402           | 57                          | 267            | 271               | 41,807           |  |  |
|                   | Persons              | 265,953          | 275                         | 1,409          | 1,594             | 262,675          |  |  |
| Rafah             | Housing Units        | 26,391           | 304                         | 271            | 76                | 25,740           |  |  |
|                   | Persons              | 170,624          | 2,291                       | 1,395          | 475               | 166,463          |  |  |

2007

:25

**Table 25: Occupied Housing Units and Persons in Gaza Strip by Governorate and Availability of Sewage System in The Housing Unit, 2007**

| Governorate       |                      | Total            | Availability of Sewage System |                  |                |                      | المحافظة |  |
|-------------------|----------------------|------------------|-------------------------------|------------------|----------------|----------------------|----------|--|
|                   |                      |                  | Not Stated                    | No Sewage System | Cesspool       | Public Sewage System |          |  |
| <b>Gaza Strip</b> | <b>Housing Units</b> | <b>214,760</b>   | <b>871</b>                    | <b>292</b>       | <b>46,702</b>  | <b>166,895</b>       |          |  |
|                   | Persons              | <b>1,387,249</b> | <b>5,533</b>                  | <b>1,205</b>     | <b>299,329</b> | <b>1,081,182</b>     |          |  |
| North Gaza        | Housing Units        | <b>39,604</b>    | 16                            | 36               | 2,420          | 37,132               |          |  |
|                   | Persons              | <b>265,355</b>   | 83                            | 170              | 16,693         | 248,409              |          |  |
| Gaza              | Housing Units        | <b>75,023</b>    | 383                           | 28               | 3,019          | 71,593               |          |  |
|                   | Persons              | <b>484,628</b>   | 2,253                         | 153              | 20,948         | 461,274              |          |  |
| Dier al Balah     | Housing Units        | <b>31,340</b>    | 111                           | 43               | 5,060          | 26,126               |          |  |
|                   | Persons              | <b>200,689</b>   | 631                           | 208              | 32,977         | 166,873              |          |  |
| Khan Yunis        | Housing Units        | <b>42,402</b>    | 59                            | 124              | 30,797         | 11,422               |          |  |
|                   | Persons              | <b>265,953</b>   | 284                           | 506              | 193,502        | 71,661               |          |  |
| Rafah             | Housing Units        | <b>26,391</b>    | 302                           | 61               | 5,406          | 20,622               |          |  |
|                   | Persons              | <b>170,624</b>   | 2,282                         | 168              | 35,209         | 132,965              |          |  |

2007

:26

Table 26: Localities in the Gaza Strip by Selected Indicators, 2007

| Locality Name                                   | No. of Housing Units | No. of Buildings | No. of Establishments | Average Household Size | No. of Households | Sex            |                |                | Locality code | اسم التجمع       |
|---|----------------------|------------------|-----------------------|------------------------|-------------------|----------------|----------------|----------------|---------------|------------------|
|   |                      |                  |                       |                        |                   | Total          | Female         | Male           |               |                  |
| Um Al-Nnaser (Al Qaraya al Badawiya al Maslakh) | 488                  | 450              | 8                     | 6.7                    | 421               | 2,813          | 1,384          | 1,429          | 552681        | )<br>(           |
| Beit Lahiya                                     | 10,135               | 5,745            | 978                   | 6.8                    | 9,457             | 64,437         | 31,654         | 32,783         | 552695        |                  |
| Beit Hanun                                      | 5,839                | 3,667            | 426                   | 7.0                    | 5,431             | 38,074         | 18,839         | 19,235         | 552740        |                  |
| Jabalya Camp                                    | 6,406                | 5,313            | 1,181                 | 6.8                    | 6,161             | 41,969         | 20,994         | 20,976         | 552755        |                  |
| Jabalya   | 20,454               | 11,193           | 2,184                 | 6.5                    | 18,901            | 123,200        | 60,021         | 63,178         | 552790        |                  |
| <b>Total North Gaza Gov.</b>                    | <b>43,322</b>        | <b>26,368</b>    | <b>4,777</b>          | <b>6.7</b>             | <b>40,371</b>     | <b>270,494</b> | <b>132,893</b> | <b>137,601</b> |               |                  |
| Ash Shati' Camp                                 | 5,569                | 3,675            | 652                   | 6.7                    | 5,207             | 34,664         | 17,163         | 17,501         | 602775        |                  |
| Gaza  | 82,283               | 35,916           | 12,626                | 6.5                    | 69,669            | 449,477        | 220,663        | 228,815        | 602825        |                  |
| Madinat Ezahra                                  | 837                  | 245              | 44                    | 5.2                    | 598               | 3,086          | 1,524          | 1,563          | 602900        |                  |
| Al Mughraqa (Abu Middein)                       | 1,158                | 1,052            | 58                    | 6.8                    | 956               | 6,541          | 3,189          | 3,352          | 602945        | ( )              |
| Juhor ad Dik                                    | 543                  | 639              | 22                    | 6.7                    | 438               | 2,923          | 1,500          | 1,423          | 603045        |                  |
| <b>Total Gaza Gov.</b>                          | <b>90,390</b>        | <b>41,527</b>    | <b>13,402</b>         | <b>6.5</b>             | <b>76,868</b>     | <b>496,692</b> | <b>244,038</b> | <b>252,654</b> |               | مجموع محافظة غزة |
| An Nuseirat Camp                                | 4,602                | 3,227            | 645                   | 6.4                    | 4,381             | 28,087         | 14,028         | 14,059         | 653065        |                  |
| An Nuseirat                                     | 6,298                | 3,919            | 785                   | 6.3                    | 5,817             | 36,664         | 18,047         | 18,617         | 653070        |                  |
| Al Bureij Camp                                  | 3,829                | 2,653            | 586                   | 6.5                    | 3,681             | 23,963         | 11,929         | 12,034         | 653140        |                  |
| Al Bureij                                       | 1,708                | 1,313            | 200                   | 6.3                    | 1,550             | 9,830          | 4,816          | 5,014          | 653145        |                  |
| Az Zawayda                                      | 3,023                | 2,340            | 244                   | 6.4                    | 2,657             | 16,876         | 8,349          | 8,527          | 653180        |                  |
| Deir al Balah Camp                              | 1,135                | 914              | 158                   | 6.7                    | 965               | 6,428          | 3,162          | 3,266          | 653200        |                  |
| Al Maghazi Camp                                 | 2,678                | 1,916            | 442                   | 6.3                    | 2,547             | 16,071         | 7,992          | 8,079          | 653210        |                  |
| Al Maghazi                                      | 1,058                | 913              | 122                   | 6.4                    | 1,029             | 6,541          | 3,184          | 3,357          | 653215        |                  |
| Deir al Balah                                   | 9,122                | 6,400            | 1,108                 | 6.5                    | 8,393             | 54,399         | 27,053         | 27,346         | 653240        |                  |

2007

:( ) 26

Table 26 (Cont.): Localities in Gaza Strip by Selected Indicators, 2007

| Locality Name                   | No. of Housing Units | No. of Buildings | No. of Establishments | Average Household Size | No. of Households | Sex              |                |                | Locality code | اسم التجمع             |
|---------------------------------|----------------------|------------------|-----------------------|------------------------|-------------------|------------------|----------------|----------------|---------------|------------------------|
|                                 |                      |                  |                       |                        |                   | Total            | Female         | Male           |               |                        |
| Al Musaddar                     | 355                  | 445              | 89                    | 6.1                    | 317               | 1,945            | 985            | 960            | 653250        | مجموع محافظة دير البلح |
| Wadi as Salqa                   | 825                  | 861              | 62                    | 6.2                    | 742               | 4,609            | 2,315          | 2,294          | 653275        |                        |
| <b>Total Dier al Balah Gov.</b> | <b>34,633</b>        | <b>24,901</b>    | <b>4,441</b>          | <b>6.4</b>             | <b>32,078</b>     | <b>205,414</b>   | <b>101,860</b> | <b>103,554</b> |               |                        |
| Al Qarara                       | 3,422                | 2,949            | 377                   | 6.0                    | 3,272             | 19,740           | 9,732          | 10,008         | 703370        |                        |
| Khan Yunis Camp                 | 6,066                | 4,286            | 660                   | 6.7                    | 5,645             | 37,640           | 18,857         | 18,782         | 703410        |                        |
| Khan Yunis                      | 25,781               | 16,422           | 3,282                 | 6.3                    | 22,563            | 142,613          | 69,979         | 72,634         | 703420        | ( )                    |
| Bani Suheila                    | 5,553                | 4,268            | 698                   | 6.3                    | 5,020             | 31,688           | 15,562         | 16,126         | 703425        |                        |
| 'Abasan al Jadida(as Saghira)   | 1,084                | 906              | 103                   | 6.1                    | 992               | 6,064            | 2,960          | 3,104          | 703430        |                        |
| 'Abasan al Kabira               | 3,564                | 3,109            | 287                   | 5.7                    | 3,229             | 18,401           | 9,071          | 9,330          | 703445        |                        |
| Khuza'a                         | 1,703                | 1,345            | 225                   | 5.8                    | 1,580             | 9,145            | 4,495          | 4,650          | 703470        |                        |
| Al Fukhkhari                    | 1,004                | 982              | 103                   | 6.3                    | 878               | 5,537            | 2,763          | 2,774          | 703485        | مجموع محافظة خانيونس   |
| <b>Total Khan Yunis Gov.</b>    | <b>48,177</b>        | <b>34,267</b>    | <b>5,735</b>          | <b>6.3</b>             | <b>43,179</b>     | <b>270,828</b>   | <b>133,420</b> | <b>137,408</b> |               |                        |
| Rafah                           | 20,079               | 12,585           | 2,510                 | 6.5                    | 18,836            | 121,710          | 60,001         | 61,709         | 753490        |                        |
| Rafah Camp                      | 5,604                | 4,220            | 965                   | 6.6                    | 5,272             | 34,805           | 17,549         | 17,256         | 753495        | ( )                    |
| Al-Nnaser (Al Bayuk)            | 1,274                | 1,290            | 93                    | 6.5                    | 966               | 6,313            | 3,165          | 3,148          | 753500        |                        |
| Shokat as Sufi                  | 2,144                | 2,279            | 124                   | 6.1                    | 1,745             | 10,710           | 5,399          | 5,311          | 753505        |                        |
| <b>Total Rafah Gov.</b>         | <b>29,101</b>        | <b>20,374</b>    | <b>3,692</b>          | <b>6.5</b>             | <b>26,820</b>     | <b>173,539</b>   | <b>86,114</b>  | <b>87,425</b>  |               | مجموع محافظة رفح       |
| <b>Total Gaza Strip</b>         | <b>245,623</b>       | <b>147,437</b>   | <b>32,047</b>         | <b>6.5</b>             | <b>219,316</b>    | <b>1,416,966</b> | <b>698,324</b> | <b>718,642</b> |               | مجموع قطاع غزة         |

Includes population counted in the Palestinian Territory, and also includes the uncoun ted population estimates according to post enumeration survey.



**Palestinian National Authority  
Palestinian Central Bureau of Statistics  
Population, Housing and Establishment Census 2007**



**Census Final Results in Gaza Strip  
Summary (Population and Housing)**

**January, 2012**



PAGE NUMBERS OF ENGLISH TEXT ARE PRINTED IN SQUARE BRACKETS.  
TABLES ARE PRINTED IN THE ARABIC ORDER (FROM RIGHT TO LEFT).

**This document is prepared in accordance with the standard  
procedures stated in the Code of Practice for Palestine Official  
Statistics 2006.**

© January, 2012

**All Rights Reserved.**

**Suggested Citation:**

**Palestinian Central Bureau of Statistics, 2012.** *Population, Housing and Establishment Census 2007 Census Final Results in Gaza Strip – Summary (Population and Housing).* Ramallah - Palestine.

All correspondence should be directed to:  
**Palestinian Central Bureau of Statistics**  
**P.O.Box 1647 Ramallah, Palestine.**

Tel: (972/970) 2 298 2700  
Fax: (972/970) 2 298 2710  
Toll Free: 1800300300  
E-mail: [diwan@pcbs.gov.ps](mailto:diwan@pcbs.gov.ps)  
website: <http://www.pcbs.gov.ps>

## **Acknowledgment**

**Population, Housing and Establishment Census (PHC-2007) is the second census conducted by the Palestinian Central Bureau of Statistics (PCBS) since the Palestinian National Authority (PNA) was established in 1994. The PHC-2007 was conducted in a very critical and complicated political, administrative, financial and organizational environment. It could not have been accomplished without the generous support of a number of friendly countries, international and national institutions and personalities.**

**The implementation of the PHC-2007 was co-financed by the PNA, United Nations Population Fund (UNFPA), the core funding group (CFG) of PCBS (Norway, Netherlands, and Switzerland), OPEC Fund for International Development (OFID), Australia, and United Nations Children Fund (UNICEF).**

**PCBS would not have been able to implement the PHC-2007 as a national project in such complicated circumstances without the important contribution made by the PHC-2007 national higher committee, the committees in the governorates, publicity campaign committees, and many other official and popular supporting committees and bodies.**

**We would also like to highlight the outstanding efforts made by the Census National Director, Executive Director, and all census national team members (senior assistants of the national and executive director, census directors in the governorates and their assistants, coordinators of publicity campaign and their assistants, field supervisors, field observers, enumerators, administrators and other team members) to plan, manage, implement, supervise, monitor, and coordinate census activities.**

**PCBS extends its deep thanks to all of these personalities and institutions for their tremendous efforts exerted to bring the second Palestinian census into light.**



## Team Work

- **Report Preparation**  
Omayma Al-Ahmad  
Rawya Alawneh
- **Graphic Design**  
Ahmad Sawalmeh
- **Dissemination Standard**  
Hanan Janajreh
- **Preliminary Review**  
Abdallah Najjar  
Omayma Al-Ahmad
- **Final Review**  
Mahmoud Jaradat  
Mahmoud Al Qayya
- **Overall Supervision**  
Ola Awad

President of PCBS



## **Preface**

The PHC-2007 is an important pillar of the national development process. It is a primary prerequisite for the socioeconomic planning. Furthermore, it helps reinforcing the Palestinian sovereignty on the ground. Countries around the world usually conduct censuses every decade according to the degree of population stability, the amount of potential changes in the demographic characteristics and the availability of the financial resources.

Realizing the importance of bridging the gap between society's statistical needs the current situation in the Palestinian Territory conducted the first national population, housing and establishment Census in 1997. PHC-2007 has been conducted for legal, development and statistical considerations. Success is vehemently attributed to the colossal efforts exerted by the national census team and the continuous support of the Palestinian leadership.

The main objective of the PHC-2007 is to update statistical data on the Palestinian population, housing units, economic establishments and agricultural holdings, and to provide small area statistics to the planners and decision makers. PHC-2007 will contribute to realizing a balanced and comprehensive development in all sectors.

PHC-2007 was designed and implemented in accordance with the United Nations principles and recommendations of Population and housing census taking into consideration the local Palestinian needs. Special attention was given to affording complete and adequate data on the size, structure, distribution and characteristics of the demographic, economic and social components of the Palestinian population; the characteristics of housing units; the number and characteristics of the economic establishments and making an inventory of the agricultural holdings. Consequently, obtained statistical data will foster and support the role and efficiency of planning both on the national and local governments levels.

In an effort of PCBS to provide the users with the census results as soon as possible, the national census team made every possible effort to fulfill that, where we were able to publish the preliminary results of the census after five weeks of the end of the census fieldwork events and this is considered a record time compared to other countries, and in a continuation of this approach.

PCBS and the national census team are pleased to present this report which contains the census final results in the Gaza Strip which has been processed. Hoping to be a reference for all planners, decision makers and policy makers in the public and private sectors and civil society institutions.

**January, 2012**

**Ola Awad  
President of PCBS**



## **Users Reference**

1. Population and socio-economic data are based on population counted in the Population, Housing and Establishments Census 2007. Unless otherwise stated.
2. In some tables the total of percentages might not add up to 100% due to rounding.
3. A set of special symbols were used in the tables of this report. The representation of these symbols are:
  - (-) Nil (not found).
  - (0) less than 0.05%.





## Table of Contents

| Subject  | Page        |
|--|-------------|
| Acknowledgment   |             |
| Preface  |             |
| List of Tables   |             |
| List of Figures  |             |
| Chapter One: <b>Introduction</b>                                       | <b>[17]</b> |
| 1.1 Introduction   | [17]        |
| 1.2 Objectives   | [17]        |
| 1.3 Justifications for Conducting the Census                           | [17]        |
| 1.4 History of Censuses in Palestine                                   | [18]        |
| 1.5 Stages of Census Implementation                                    | [18]        |
| 1.6 Dissemination Stages   | [19]        |
| Chapter Two: <b>Concepts and Definitions</b>                           | <b>[21]</b> |
| Chapter Three: <b>Methodology</b>                                      | <b>[29]</b> |
| 3.1 Census Coverage  | [29]        |
| 3.2 Questionnaires and Forms   | [29]        |
| 3.3 Fieldwork  | [31]        |
| Chapter Four: <b>Summary of Final Results</b>                          | <b>[35]</b> |
| 4.1 Population Final Results   | [35]        |
| 4.2 The Basic Demographic and Social Characteristics of the Population | [35]        |
| 4.3 Final results of Household Numbers                                 | [38]        |
| 4.4 Final results of Housing Units Numbers                             | [39]        |
| Chapter Five: <b>Data Quality</b>                                      | <b>[41]</b> |
| 5.1 Introduction   | [41]        |
| 5.2 Control Procedures in the Preparatory Stage                        | [41]        |
| 5.3 Control Procedures in the Implementation Stage                     | [42]        |
| 5.4 Control Procedures in the Stage of Data Processing                 | [43]        |
| 5.5 Data Quality Assurance   | [45]        |
| <b>Tables</b>  | <b>59</b>   |



## List of Tables

| Table   | Page      |
|---|-----------|
| <b>Table 1:</b> Population Gaza Strip by Governorate and Sex, 2007  | <b>61</b> |
| <b>Table 2:</b> Population in Gaza Strip by Age Group, Sex and Governorate, 2007  | <b>62</b> |
| <b>Table 3:</b> Total Population in Localities in Gaza Strip by Size-Class of Population in locality, Households and Sex, 2007                                | <b>65</b> |
| <b>Table 4:</b> Population in Gaza Strip by Governorate, Sex and Nationality, 2007  | <b>66</b> |
| <b>Table 5:</b> Palestinian Population (12 Years and Over) in Gaza Strip by Governorate, Sex and Marital Status, 2007   | <b>67</b> |
| <b>Table 6:</b> Palestinian Population in Gaza Strip by Governorate, Sex and Refugee Status, 2007   | <b>68</b> |
| <b>Table 7:</b> Palestinian Population (5 Years and Over) in Gaza Strip by Governorate, Sex and Educational Attendance, 2007                                  | <b>69</b> |
| <b>Table 8:</b> Palestinian Population (10 Years and Over) in Gaza Strip by Governorate, Sex and Educational Attainment, 2007                                 | <b>70</b> |
| <b>Table 9:</b> Palestinian Population in Gaza Strip who's Completed Associate Diploma and Above by Governorate, Sex and Specialization, 2007                 | <b>71</b> |
| <b>Table 10:</b> Palestinian Population (10 Years and Over) in Gaza Strip by Governorate, Sex and Activity Status, 2007                                       | <b>73</b> |
| <b>Table 11:</b> Employed and Unemployed Ever Worked Palestinian Population (10 Years and Over) in Gaza Strip by Governorate, Sex and Main Occupation, 2007   | <b>74</b> |
| <b>Table 12:</b> Employed and Unemployed Ever Worked Palestinian Population (10 Years and Over) in Gaza Strip by Governorate, Sex and Economic Activity, 2007 | <b>75</b> |
| <b>Table 13:</b> Disabilities/Difficulties of Palestinian Population in Gaza Strip by Governorate, Sex and Type of Disability/Difficulty, 2007                | <b>76</b> |
| <b>Table 14:</b> Foreign-Born Palestinian Population in Gaza Strip by Place of Birth, Sex and Age Group, 2007   | <b>77</b> |
| <b>Table 15:</b> Private Households in Gaza Strip by Governorate and Household Size, 2007   | <b>79</b> |
| <b>Table 16:</b> Private Palestinian Households in Gaza Strip by Governorate and type of Household, 2007  | <b>80</b> |
| <b>Table 17:</b> Heads of Palestinian Households (10 Years and Over) in Gaza Strip by Age Group, Sex and Activity Status, 2007                                | <b>81</b> |
| <b>Table 18:</b> Households in Gaza Strip by Governorate and Availability of Durable Goods to the Household, 2007   | <b>82</b> |

| <b>Table</b>   | <b>Page</b> |
|--|-------------|
| <b>Table 19:</b> Households and Persons in Gaza Strip by Governorate and Tenure of Housing Unit, 2007  | <b>83</b>   |
| <b>Table 20:</b> Occupied Housing Units and Persons in Gaza Strip by Governorate and Type of Housing Unit, 2007                                | <b>84</b>   |
| <b>Table 21:</b> Occupied Housing Units and Persons in Gaza Strip by Governorate and Number of Rooms in The Housing Unit, 2007                 | <b>85</b>   |
| <b>Table 22:</b> Occupied Housing Units in Gaza Strip by Governorate and Availability of Public Services (Water, Electricity and Sewage), 2007 | <b>86</b>   |
| <b>Table 23:</b> Occupied Housing Units and Persons in Gaza Strip by Governorate and Main Source of Water in The Housing Unit, 2007            | <b>87</b>   |
| <b>Table 24:</b> Occupied Housing Units and Persons in Gaza Strip by Governorate and Availability of Electricity in The Housing Unit, 2007     | <b>88</b>   |
| <b>Table 25:</b> Occupied Housing Units and Persons in Gaza Strip by Governorate and Availability of Sewage System in The Housing Unit, 2007   | <b>89</b>   |
| <b>Table 26:</b> Localities in Gaza Strip by Selected Indicators, 2007   | <b>90</b>   |

## **List of Figures**

| <b>Figure</b>  | <b>Page</b> |
|--|-------------|
| <b>Figure 1:</b> Age and Sex Distribution in Gaza Strip Population, 2007   | <b>[36]</b> |
| <b>Figure 2:</b> Percentage of Palestinian population in Gaza Strip with One Disability by Type of Disability, 2007  | <b>[36]</b> |
| <b>Figure 3:</b> Percentage Distribution in Gaza Strip Population (aged 10 and over) by Educational Attainment, 2007 | <b>[37]</b> |
| <b>Figure 4</b> Illiteracy Rates in Gaza Strip by Governorate, 2007  | <b>[37]</b> |
| <b>Figure 5:</b> Unemployment Rates in Gaza Strip by Governorate, 2007   | <b>[38]</b> |
| <b>Figure 6:</b> Percentage Distribution of Population (12 years and over) in Gaza Strip by Marital Status, 2007     | <b>[38]</b> |
| <b>Figure 7:</b> Average Household Size in Gaza Strip by Governorate, 2007   | <b>[39]</b> |



## **Introduction**

### **1.1 Introduction**

The Population Housing and Establishments Census-2007 (PHC-2007) is the second census conducted in the Palestinian Territory. It is the largest and the most inclusive statistical operation conducted to obtain statistical data necessary for socio-economic planning and monitoring. Given the great importance of this census, the Council of Ministers issued specific decisions at its meeting convened in Ramallah on 16/12/2006 regarding the implementation of the Population, Housing and Establishment Census-2007. These decisions set the geographical scope of the census and established the national committees assigned to supervise the implementation.

The census is one of the pillars of the official statistical system. All sectors of society and private and governmental institutions were requested to support the national team which has the responsibility for planning and conducting the census activities.

### **1.2 Objectives**

The main objective of the PHC-2007 is to provide figures of the Palestinian population and its geographical distribution in accordance with a number of relatively stable basic characteristics for the purposes of socio-economic development. Preparations for conducting a census usually take three to five years for piloting, testing tools, work plans, human and physical needs and timetable. The census is one of the most important statistical activities as it provides statistical data on the distribution of population and the demographic, social and economic characteristics in a certain reference period of time for all the individuals within the borders of the state.

### **1.3 Justifications for Conducting the Census**

Nationally, there is a consensus on the necessity of conducting a regular census each decade. A census is considered a legal requirement according to the General Statistics Law No. 4, 2000. In particular, the census was conducted for the following justifications:

1. Comparing statistics from both the 2007 and 1997 censuses for various statistical indicators and tracking fundamental changes in population, fertility, immigration, labor force and housing conditions.
2. Measuring the impact of the Expansion and Annexation Wall on population displacement, especially in the localities through which the Wall passes or totally segregates residents.
3. Providing small areas statistics, which are essential for the planning process at micro-level.
4. Realizing the millennium goals. These would not have been achieved without a variety of indicators on development and trends of change in the population, social and economic fields, particularly indicators in education, employment, demography, and the population age structure.
5. Updating population projections: The availability of statistical data on the population from two censuses is one of the most important requirements for success in preparing accurate population projections for the coming years, in addition to the updating of population and establishments registers.



6. Updating households, buildings, houses and establishments sampling frames, which are essential for implementing sample-based surveys.
7. Strengthening national statistical capacities and enforcing them as a form of national sovereignty over land and population.

#### **1.4 History of Censuses in Palestine**

1. The first population census in Palestine was conducted in October 1922 during the British Mandate era. The estimated population was 752 thousand.
2. A second population census was conducted in November 1931. The population was estimated at 1.033 million.
3. A demographic survey was conducted in 1944. The estimated number of the population of Palestine was estimated at 1.74 million.
4. Under the Hashemite Kingdom of Jordan's administration of the West Bank, the Palestinian population in the West Bank was estimated at 667 thousand in the 1952 census and 805 thousand in the 1962 census.
5. Under the Israeli occupation, a comprehensive enumeration of the Palestinian population was done in September 1967. About 599 thousand inhabitants were enumerated in the West Bank and approximately 400 thousand in the Gaza Strip. It should be noted that about 400 thousand Palestinians were displaced from the Palestinian Territory immediately after the Israeli occupation in 1967.
6. PCBS conducted the first Palestinian census in 1997. The estimated population in the West Bank (West Bank excluding J1, i.e., the part of Jerusalem annexed by Israel in 1967) and Gaza Strip was 2.6 million. The estimated population of J1 at the time was about 210 thousand. The Israeli authorities prevented the national census team from surveying the J1 population.

#### **1.5 Stages of Census Implementation**

The Population, Housing and Establishment Census-2007 was undertaken in three stages:

##### **1.5.1 The Preparatory Stage**

This stage began at the beginning of 2005 and finished in July 2007. The preparatory stage was a preliminary stage during which formal decisions on the census were announced. Different organizational structures and committees were formed during this phase. In order to meet expected governmental needs, PCBS cooperated with ministries and governmental departments to prepare a list of different variables and indicators.

Maps were prepared for localities and these localities were divided into enumeration areas. Questionnaire design, modules, and different plans were developed in this phase.

##### **1.5.2 The Field Work Stage**

This stage began in August 2007 and was completed by the end of 2007. It included delineation of enumeration areas, marking and listing of buildings, housing units and establishments from 30/10/1997 - 23/11/1997, and the population count from 1-16/12/2008.

##### **1.5.3 Data Processing Stage**

This stage began in November 2007 to the end of 2008 in the West Bank. The main activities of the census data processing stage were office editing, office coding, data entry and computer editing. In the Gaza Strip, these operations took around eight months during the period March – October 2011 due to the closure of the Palestinian Central Bureau of Statistics office in Gaza for three years for political reasons that prevented work on data processing.

## **1.6 Dissemination Stages**

### **1.6.1 Preliminary Findings**

The preliminary findings of the Population, Housing and Establishments Census - 2007 were disseminated on 7/2/2008 in the form of numbers at governorate and regional level (the West Bank and Gaza Strip) and the Palestinian Territory. These results were preliminary since they were compiled manually depending on the organization books of the census observers. The results were disseminated in record time a month after finishing the fieldwork operations.

### **1.6.2 Final Findings**

After completing the data processing stage in Gaza Strip, including editing, coding and data entry of all questionnaires for each enumeration area, the final results for Gaza Strip were disseminated in the report, including all the characteristics of individuals and households and the final results of Gaza Strip and its governorates. The final detailed results are expected to be disseminated during January 2012 - June 2012. The detailed results of the West Bank and its governorates were disseminated during November 2008 - July 2009.

### **1.6.3 Analytical Reports**

The analytical reports regarding population and social themes will be disseminated via the dissemination project, which will be carried out by experts from universities and research centers.



## Chapter Two

### Concepts and Definitions

The definitions used in the PHC-2007 are based on the de-facto concept as the United Nations standard concepts and definitions stated in order to be consistent with the 1997 census and to ensure comparability. The following concepts and definitions were used in this report

#### **Population Census:**

The process of collection, classification, processing, analysis, assessment, dissemination of statistical data on the number of population and their distribution by basic demographic and socio-economic characteristics in a specific reference period within the boundaries of a specific geographic area.

#### **Collective Households:**

It refers to the place constructed for the residence of a group of individuals, who live therein and benefit from the services it provides. The collective household may be comprised of one building or more or one housing unit or more. Examples of collective households include hotels, hostels, elderly and orphans' homes, psycho-therapy clinics and hospitals, collective households for university students, collective living quarters (camps), and housing units of priests and nuns in monasteries and churches (who do not have other households).

#### **Household:**

One person or a group of persons with or without a household relationship, who live in the same housing unit, share meals and make joint provision of food and other essentials of living. In PHC-2007, the household includes:

1. Household members found in the housing unit on the night of 01/12/2007.
2. Visitors living outside the Palestinian Territory but who spent the night of 01/12/2007 in the housing unit of the household (relatives and non-relatives).
3. Visitors from the Palestinian Territory who, as a whole household, remained for all of the enumeration period 1-16/12/2007.
4. Servants and other workers living usually within the household who spent the night of 01/12/2007 with the household.
5. New births born prior to the night of 01/12/2007 and still alive, irrespective of whether they were within the household or in the hospital.
6. Household members who spent the night of 01/12/2007 with the household and died after that night.
7. Household members who usually live in the housing unit but were not available on the night of 01/12/2007. This category includes:
  - Household members who spent the night of 01/12/2007 with another household inside the Palestinian Territory.
  - Household members working at night 01/12/2007 in factories, hospitals, airports, etc.
  - Individuals who spent the night of 01/12/2007 traveling on public ways inside the Palestinian Territory.
  - Fishermen who spent the night fishing in regional waters.
  - Members of internal security forces and civil defense forces irrespective of where they spent the night of 01/12/2007.

- Palestinian household members usually living within the household and who are hold an ID card, but who were abroad for less than one year for temporary reasons (tourist, visit, pilgrim, or any other reason).
- Palestinian household members usually living within the household but who were absent during the night of 01/12/2007 for urgent reasons, including hospital, detainee, etc.
- Palestinian household members usually living within the households but who were absent during the night of 01/12/2007 due to their stay in a hotel in the Palestinian Territory.
- Students studying abroad regardless of the length of their stay.
- Students studying in Palestinian universities, institutes and other educational institutions irrespective of place of existence.
- Household members detained in Israeli prisons.

**The following were excluded from households:**

- Persons who died before the night of 01/12/2007.
- Persons who were born after the night of 01/12/2007.
- Persons who stayed during the counting in elderly homes, orphans' homes, psychotherapy clinics and hospitals, and other collective households in the Palestinian Territory.

**The type of households that underwent enumeration may be divided into:**

**Private Households:** The households included in the aforementioned definition of the household.

**Collective (Institutional Households):** It refers to the households enumerated in the aforementioned collective households.

**Palestinian Household:**

It refers to the private household whose head holds Palestinian nationality. As for non-Palestinian household, it refers to the household whose head does not hold Palestinian nationality irrespective of the nationality of other household members.

**Special Types of Households:**

**A one-person household:** It refers to the household comprised of one individual.

**Nuclear Household:** It refers to the living household comprised of a couple only; a couple and a son or a daughter (not adopted son or daughter) or more; or a male head of a household with a son or a daughter or more; or a female head of a household with a son or a daughter or more. No other relatives or non-relatives live with this household.

**Extended Household:** A household of at least one nuclear household together with other relatives.

**Composite Household:** Refers to household consisting of at least one nuclear household with other non-relatives.

**Average Household Size:**

It refers to the average number of household members calculated through dividing the total number of members of a certain category by the number of households for that particular category.

**Sex:**

It is divided into male and female.

**Age in Completed Years:**

The completed age in years of the person enumerated, which is the difference between the date of birth and the survey reference period.

**Original Nationality:**

It refers to the political identity of individuals as Palestinian, Jordanian, Egyptian, Brazilian, French, etc.

**Refugee Status:**

This status relates to the Palestinians who were forced to leave their land in the Palestinian Territory occupied by Israel in 1948. It applies to their male sons and grandchildren.

1. **Registered Refugees:** It applies to registered refugees holding refugee registration cards issued by UNRWA.
2. **Non-Registered Refugees:** It applies to unregistered refugees who do not hold refugee registration cards issued by UNRWA.
3. **Non-Refugee:** It applies to any Palestinian not categorized under any of the two aforementioned status.

**Handicapped and Disabled:**

The disabled is defined as the person suffering from a clear and evident weakness in performing certain activities due to continuous difficulties emanating from a physical, mental or health state that has lasted for more than six months.

**Seeing Disability:**

It includes blind and one-eyed persons, and any person suffering from vision weakness even after using special devices, provided they do not suffer from any other disability.

**Hearing (Auditory) Disability:**

It includes deaf persons and any person suffering from clear auditory problems even after using special auditory devices, provided they do not suffer from any other disability.

**Moving Disability:**

It refers to the person suffering from evident problems in walking, climbing stairs, bending, bowing, kneeling, provided he / she does not suffer from any other disability.

**Cognition Disability:**

It refers to individuals who suffer from difficulties in concentration and memory, decision-making, understanding speech, reading, identifying persons, identifying areas and the use of a map, calculations, reading and thinking.

**Communication Disability:**

Refers to people who do not have the ability to exchange information and ideas with others and to deal with them through the use of speech, or sign or movement or to write the information they want to share with others, which may be the result of an inability of hearing or speech, or lack of the mental capacity to understand or interpret what others say, whether signals, words or movements.

**Educational Attendance:**

Attendance means registration in any formal educational stage irrespective of whether it took the form of continuous attendance or distance learning. Formal education stages include the elementary stage, preparatory stage, (both of which are referred to as the basic stage), secondary stage, and higher education stage (universities, colleges, vocational institutes, etc.). Enrollment categories are as follows:

1. **Attending:** It applies if the person is currently enrolled in a regular educational stage.
2. **Attended and left:** It applies if the person unsuccessfully left a regular educational stage, i.e., without obtaining any degree.
3. **Attended and graduated:** It applies if the person successfully graduated from a regular educational stage and did not enroll in any stage after that.
4. **Never attended:** It applies if the person is not currently enrolled and was never enrolled in any regular educational stage.

**Years of Schooling Completed:**

For persons currently attending, attended and left, or successfully graduated, reference shall be made to the successfully completed formal educational years (completed years.) It does not include drop-out years, failure years, kindergarten years or ongoing educational years. Educational training courses are not included among the years of regular study.

**Illiterate:** It applies to persons unable to read or write in any language and who were never awarded a certificate from any formal education system.

**Can Read and Write:** It applies to persons who are able to read and write without completing any of the educational stages. Such persons are generally able to read and write simple sentences.

**Specialization:**

It refers to the name of the subject the person successfully completed.

**Employed:**

Persons who were at work for at least one hour during the reference period, whether for their own account or for others, paid or unpaid, or in the interest of the household. Employees are classified according to the number of weekly working hours: 1-14 hours, 15-34 hours, or 35 hours or more.

**Labor Force Status:**

A person's work status in terms of being inside or outside the labor force and also classified as follows:

1. **Employed 1-14 work hours:** All persons aged 7 years and over who were at work for at least one hour during the reference week, or who were not at work during the reference week but held a job or owned a business from which they were temporarily absent and usually working 1-14 hours per week.
2. **Employed 15-34 work hours:** All persons aged 7 years and over who were at work during the reference week and held a job or owned a business from which they were temporarily absent and usually working 15-34 hours per week.
3. **Employed 35 hours or more:** All persons aged 7 years and over who were at work during the reference week and held a job or owned a business from which they were temporarily absent and usually working 35 hours or more per week.

**Does not work and seeking work - who has ever been employed:**

4. **Actively seeking a job during the reference week:** Those individuals aged 7 years and over who did not work at all during the reference week, were not absent from a job, were available for work and actively seeking a job during the reference week, and looking for a job by one method of the following: registration at employment office, or registration at a labor union, or asking friends or relatives, or a personal visit to the premises, or reading the newspaper in order to obtain jobs, or searching for a building or land or machinery or equipment in order to establish a private project or seek financial resources. Note: this category is those who worked in the previous two weeks continuously.
5. **Not seeking work because of discouragement:** Those individuals aged 7 years and over who had worked in the past but within a reference week did not work even one hour, were not looking for work and were willing to work, or need to work and sought previously but had been unable to find work.

**Does not work and wants to work – never employed:**

6. **Actively seeking a job during the reference week:** Those individuals aged 7 years and over who did not work at all during the last period, were not absent from a job, were available for work and actively seeking a job during the reference week, and looking for a job by one method of the following: registration at an employment office, or registration at a labor union, or asking friends or relatives, or a personal visit to the premises, or reading the newspaper in order to obtain jobs, or searching for a building or land or machinery or equipment in order to establish a private project or seek financial resources.
7. **Not seeking work because of discouragement:** Those individuals aged 7 years and over who have not worked throughout their life with any kind of work, have not worked even for one hour during the reference period, were not looking for work, but have desire or need to work and sought work previously but were unable to find and have no income due to this and did not continue to look for work.

**Does not work and does not want to work:**

Individuals aged 7 years or over for whom the concept of employed or unemployed does not apply, are classified outside the labor force in the sense that this individual did not work even one hour during the reference period, nor is looking for work and does not wish to work and falls under this definition:

8. **Full-time study/training:** Individuals aged 7 years or over who regularly study in order to obtain a qualified skill and not linked to work during a certain period of reference. It should be noted here that household chores and hobbies are not included in the concept of work.
9. **Full-time housekeeping:** Any person (male or female) aged 7 years and over not working but capable of work and not looking for work and not attending regular study and aims to serve the household home. This does not include the servicing of the homes of others in return for payment in kind or cash since this type of service is within the workplace.
10. **Disabled/old age/illness:** An individual aged 7 years and over who cannot do any kind of work due to chronic illness or disability. This category also includes all individuals who are unable to work because of old age.



- 11. The existence of income/retiree:** If an individual is able to work but does not work and did not wish to work nor look for work because there is revenue from real estate or retirement, etc.
- 12. Other:** Includes any individual for which all the previously stated did not apply, such as a prisoner, or individual capable of work but not wishing or looking for work and who has no income, such as sons and daughters who are not attending school, who do not apply to any situation mentioned previously.

**Main Occupation:**

The main job or type of work performed by the employed person or used to be performed by the unemployed ever worked person. The occupation refers to the activity in which the employee works more than half of his/her working hours or the most frequent job during the last three months prior to the enumeration night.

**Main Economic Activity:**

Is the main work of the establishment based on the (ISIC, rev3) and that contribute by the large proportion of the value added, whenever more than one activity exist in the establishment.

**Marital Status:**

The status of those aged 12 years and over in terms of marriage traditions and laws in the country.

May be one of the following cases:

- 1. Never married:** It applies if the person aged 12 years and over has not been married or legally engaged (according to customs and traditions applicable in the country).
- 2. Legally engaged:** It applies if the person aged 12 years and over has an official marriage document (issued by a competent court) but has not been actually married yet according to customs and traditions applicable in the country. The divorced, widowed, and married twice do not belong to this category.
- 3. Married:** It applies if the person aged 12 years and over is actually and officially married (according to customs and traditions applicable in the country) irrespective of his/her past marital status as well as whether the couple were together during the reference period or not. The person married to more than one wife is classified as married.
- 4. Divorced:** The person aged 12 years and over who was previously married and legally divorced but was not married again.
- 5. Widowed:** The married person aged 12 years and over whose marriage was ended by the death of the spouse and was not married again.
- 6. Separated:** The individual 12 years old and over who was married, but his/her marriage was revoked for some reason without any legal or official registration, and he/she did not marry again.

**Housing Unit:**

A building or part of a building constructed for one household only, with one or more independent entrances leading to the public road without passing through another housing unit.

**Housing Unit type:**

Housing unit type may refer to any of the following:

1. **Villa:** A separately established building that is usually constructed from clean stone. It is constructed for the living of one household and consists of a two-suite, single or double or multiple storeys connected through internal stairs. One of the suites is constructed as bedrooms, while the second suite is constructed for reception and involves the kitchen and other related services. In general, the villa is surrounded by a garden, regardless of the area of this garden, which is surrounded by a border wall or fence. Villas normally have a roofed parking area (garage). Villas may also include a separate small building or extension as part of them.
2. **House:** A building usually established for the residence of one household or more; it is the typical form of residential buildings prevailing in Palestine. The house may be comprised of a single storey or more that is utilized by a single household.
3. **Apartment:** It is a part of a building or a house, consisting of one room or more and annexed with kitchen, bathroom and toilet, which are all closed by an external door leading to the road through a stairway and/or pathway. It is intended usually for one household.
4. **Independent Room:** It is a separate room with no kitchen, bathroom or toilet, but sharing these basic services with other households and it is intended for living purposes.
5. **Marginal:** It is a separate unit, usually comprised of one or more rooms. The main construction material of the ceiling and the external walls is zinc, tinsplate, etc, but it does not undergo listing unless it is occupied.
6. **Tent:** It is made of textile, wool, or hair. It is typically used in the Bedouin localities.
7. **Other:** It refers to any type of building other than the aforementioned. Examples of this type include cottages, caves, grottos, and booths occupied by a tenant during the Census.

**Room:**

The housing unit or part of the housing unit surrounded with walls and having a ceiling, provided that its area is not less than four square meters.

**Tenure of the Housing Unit:**

This section refers to the household tenure of the housing unit that could be one of the following categories:

1. **Owned:** This category applies when the household or one of the household members usually living therein owns the housing unit.
2. **Rented Unfurnished:** If the housing unit is rented without furniture.
3. **Rented Furnished:** If the housing unit is rented with furniture.
4. **Without Payment:** If the housing unit is used without any payments.
5. **For Work:** If the housing unit is offered to the household as a result of a working relationship with one member of the household or more.
6. **Other:** If the tenure of the house is not mentioned above.

**Main Source of Water:**

1. **Public Water Network:** A network of pipes for the purpose of providing clean water to households. It normally belongs to a municipality, the council or to a private company.

2. **Mekorot Israeli Company:** A network of pipes for the purpose of providing clean water to households. It normally belongs to Mekorot Israeli company.
3. **Collection Water Wells:** Wells that are dug in the ground for the purpose of collecting rain water.
4. **Springs:** Water that is discharged from the ground at an intersection point between the topographic surface and the groundwater table; it could be permanent or seasonal and it is considered as one of the natural resources for irrigation.
5. **Water Tanks:** Using water from vehicles that distribute and transfer water.
6. **Others:** If the source of water was not mentioned above.

#### **Electricity:**

1. **Public Network:** Electrical wiring deployed in residential areas and covering all or most of the households in the locality, particularly through electricity companies or local authorities (municipal or village).
2. **Private Generator:** Device used for electric power generation and supply to housing and owned by the owner of the household or group of individuals.
3. **Not Available:** In the case of lack of means and therefore foregoing electricity.

#### **Connection to Sanitation:**

This question illustrates the housing unit connections to sanitation, which are:

1. **Sewage Network:** System of collectors, pipelines, conduits and pumps to evacuate wastewater (rainwater, domestic and other wastewater) from any of the location places generated either to a municipal sewage treatment plant or to a location place where wastewater is discharged.
2. **Porous Cesspit:** A well or a pit in which night soil and other refuse is stored, constructed with porous walls.
3. **Tight Cesspit:** A well or a pit in which night soil and other refuse is stored, constructed of tight walls.
4. **Not Found:** In case of no provision by the methods detailed above.

## Chapter Three

### Methodology

#### 3.1 Census Coverage

The PHC-2007 covered all individuals who were in the Palestinian Territory on the census reference night (30/11-1/12/2007) regardless of nationality and citizenship. It also covered all Palestinians who usually have residence in the Palestinian Territory (including those who were temporarily absent for less than one year for the purpose of visit, tourism, treatment, etc. while their households are still living at their permanent places of residence in the Palestinian Territory). All Palestinian students abroad while their households are still living at their permanent places of residence were also included, in addition to all prisoners and detainees in Israeli jails, regardless of the duration of detention. The census excluded all Palestinians holding identity cards who were absent for more than one year (except for students), even if their households are still living in their places of residence in the Palestinian Territory.

This was a decision made by the Census National Committee in its first meeting in the following resolution:

- 1. Determine the coverage of the census to include the entire population, housing and establishments in the Occupied Palestinian Territory in 1967, with the exception of Israeli settlements.**
- 2. The enumeration includes the following categories of individuals:**
  - A. All individuals living in the Palestinian Territory on the census reference date regardless of nationality, citizenship and reason of presence, and regardless of where present in the Palestinian Territory.
  - B. All Palestinians who live abroad temporarily and for less than a year whose normal place of residence is in the Palestinian Territory are to be counted with their households.
  - C. All Palestinians who are studying abroad, regardless of the duration of the study and length of residence abroad, and all individuals detained in Israeli jails regardless of the period of detention, are to be counted with their households.

#### 3.2 Questionnaires and Forms

Three questionnaires were designed for data collection comprising listing of buildings, housing and households questionnaire, the household and housing conditions questionnaire and economic establishments questionnaire. An additional questionnaire was allocated for hotels. The following is a detailed account of the items and variables of these questionnaires:

##### **Buildings, Housing and Households Listing Questionnaire**

The questionnaire of buildings, housing and households contains, in addition to the identification data, a number of items and detailed variables including:

The owner's name or the name of the building, the type of building, current use of the building, type of owner, the year of establishment, construction material for external walls, the number of floors in the building, the number of housing units in the building, current use of the housing unit, and the reason for the closure, absence, desertion of closed units, or abandonment.

## **Households and Housing Conditions Questionnaire**

The questionnaire of households and housing conditions, in addition to the identification data, has the following items and variables:

### **Section I: Housing Data and Conditions**

Housing data includes occupation type, housing type, number of rooms, number of nuclear households, housing property, number of bedrooms, connectivity of public water, electricity and sanitation, availability of a kitchen, bathroom and toilet, the method used for the disposal of household wastes, the main source of energy used in cooking and heating, availability of durable goods to the household, available information technology for the household.

### **Section II: Individual Data**

- A. Data of all individuals regardless of their age, sex and nationality and comprising the name, the head of the household, sex, date of birth, age in completed years, original nationality, religion, usual place of residence of the individual's mother when giving birth, usual place of residence, duration of residence in the usual place of residence, previous place of residence, and reason for changing previous place of residence.
- B. Data of Palestinian individuals comprising identification number, refugee status, and difficulties or disabilities that might cause suffering to individuals where present and availability of insurance.
- C. Data of all individuals aged five years and over, namely education, number of study years successfully completed in the formal educational system, computer use.
- D. Data of all individuals aged seven years and over, namely relation to labor status, main occupation, economic activity, sector activity status and place of work.
- E. Data of all individuals 10 years and over, namely educational level, specialization, place where obtained higher education and vocational training obtained by the individuals.
- F. Data of all individuals aged 12 years and over, namely marital status, age at first marriage, duration of marriage, the number of live births and the number of living children, males and females, throughout the duration of marriage for women, and the number of live births and children still living during the previous year.

### **Section III: Household Members**

Summary of the number of household members divided into males and females.

### **Section IV: Tourism and Kindergartens**

Tourism inside and outside Palestine; children enrolled in kindergartens by sex.

### **Section V: Agricultural Holdings**

Includes the individual holder in the questionnaire and the number of agricultural holdings by type (plant, animal, and mixed).

### **Section VI: Mortality**

Includes questions about deaths in the household during the 12 months preceding the census, the name of the deceased and their relationship to the head of the household, sex and age at death and whether death was during pregnancy or childbirth.

### **3.3 Fieldwork**

The fieldwork stage of implementing the Population, Housing and Establishments Census-2007 includes several consecutive fieldwork operations which are:

#### **3.3.1 Updating Maps**

PCBS conducted a comprehensive updating of maps for all Palestinian localities in early November 2006, which was completed at the end of June 2007. All localities were visited and their maps, which had been prepared by the Census National Committee for defining and enumerating the localities, were updated.

Following completion of amendments to the maps, localities were divided into enumeration areas; each one includes about 150 housing units, with the exception of small localities that include less than 150 housing units and where each locality was considered to be an enumeration area regardless of the number of housing units. Census fieldwork teams, supervisors, observers and enumerators were allocated a specific area of work on maps to avoid overlapping or undercounting of enumeration areas. Copies of the maps were photocopied for field work teams and the central operations room. The number of enumeration areas totaled 4,916.

#### **3.3.2 Identification and Delineation of Enumeration Areas**

Supervisors put signs on the walls of buildings located on the outer borders of enumeration areas of the 4,916 areas distributed in localities in the West Bank and Gaza Strip, except J1. The implementation of this process took 25 days from 18/08/2007 to 11/09/2007.

#### **3.3.3 Numbering and Counting of Buildings, Housing and Households and Establishments**

The observers and their assistants carried out this process in all localities during the period from 20/10/2007 to 10/11/2007 by checking all buildings and putting the census number on the entries, as well as numbering all housing units in each building and collecting the main data of the buildings and housing units.

The main objective of this operation was to provide a range of important data on the numbers and characteristics of the buildings for use in policymaking concerning housing. This process also aimed to facilitate the work of enumerators in the implementation stage of counting the population. The observers during these operations gave each household a reminder questionnaire to be filled in on the morning of 01/12/2007 regarding the people who spent the reference night of 30/11- 01/12/2007 in the housing for submission to the enumerator to assist in the process of counting the population and ensure accuracy and coverage.

#### **3.3.4 Population Count**

This process was implemented in the West Bank during the period from 01/12/2007 to 16/12/2007, while in the Gaza Strip it was implemented during the period from 25/12/2007 to 08/01/2008. Enumerators visited all the households in their homes and obtained data on the housing in which they live and their different characteristics, as well as data on household members, and registered the demographic, social and economic characteristics of each household member.

#### **3.3.5 Receipt of Booklets**

The process of receiving booklets started after each enumerator had covered his/her enumeration area, which ended in the West Bank on the evening of 16/12/2007 and in the

Gaza Strip on the evening of 08/01/2008. The process of receiving booklets was divided into two parts: fieldwork receipt, and then delivery to the census directorate in PCBS premises.

### **Receipt of Fieldwork Booklets**

After completion of the counting phase, the observers received all booklets and questionnaires from the enumerators, namely the household and housing conditions booklets and the enumerator organizational book. After receiving them, the observers submitted them to their supervisors for a technical check. The receiving process began in the West Bank from 16/12/2007 until 25/12/2007 (during which the holiday of Eid Al-Adha took place), while in the Gaza Strip it started from 08/01/2008 until 12/01/2008. All booklets were handed over to PCBS main premises in Ramallah and Gaza.

### **Receipt of Booklets in PCBS Main Premises**

The receipt process started in the main premises in Ramallah from all governorates on 29/12/2007 and ended on 07/01/2008 in the West Bank, while it started on 24/01/2008 and ended on 26/01/2008 in the Gaza Strip.

### **3.3.6 Post Enumeration Survey**

Post enumeration is considered to be a developed technique for assessing and evaluating census findings. It was implemented through selecting a random sample of 218 enumeration areas representing all types of localities. The purpose of conducting such a study was to measure the rate of coverage and individuals in the Census-2007 to take these rates into account when preparing estimates of the population in the years after the census.

The fieldwork was implemented during the period from 29/12/2007- 03/01/2008 and 12/01/2008-16/01/2008 in the Gaza Strip. The process of editing the selected booklets for this survey was begun, matching them with the booklets of household and housing conditions obtained during the process of counting the population, i.e., data entry, data processing and extracting findings. These processes ended on 30/01/2008.

### **3.3.7 Preparation of the Preliminary Results**

After completion of the counting process on 16/12/2007, the enumerators and observers carried out a desk review and prepared the preliminary fieldwork results from 16/12/2007 until 18/12/2007. After that, during the period from 24/12/2007 to 30/12/2007, preliminary results were compiled and reviewed by census managers in the governorates and then sent to the census office in PCBS main premises. This operation was carried out in Gaza Strip during the period from 08/01/2008 to 15/01/2008.

After receipt of the preliminary results forms from the fieldwork by the end of December 2007, these data were entered into computers to extract preliminary statistical tables for the Palestinian Territory and governorates. These tables contain the number of households and the number of male and female individuals.

During the receipt of preliminary results, coverage was thoroughly checked in all enumeration areas for comparison with the main enumeration areas booklet to ensure that no enumeration area had been missed.

### **3.3.8 Data Processing**

The data processing stage includes all the stages after fieldwork, such as editing, coding, data entry, electronic editing and dissemination via both traditional methods (publications) and

online or on CDs and databases. Data processing was carried out in the West Bank with two work shifts. This process started on 13/01/2008 by training editors and coders. Around 120 employees were hired for each shift, in addition to supervisors for each shift. In the Gaza Strip, data processing was carried out during March – October 2011.

### **3.3.9 Preparation of Final Findings**

During this stage, certain basic steps were achieved, of which the most important were data processing, tabulation and dissemination.





## Summary of Final Results

### 4.1 Population Final Results

Final results show that the total population of the Gaza Strip on midnight of 30/11-1/12/2007 was 1,416,966 people, including 718,642 males and 698,324 females. The male/female sex ratio was 102.9 males/100 females. The number of the population includes the following:

#### 4.1.1 The Actual Enumerated Population

According to the final results of the actual count process, the number of actually counted population in the Gaza Strip is 1,387,530 people, including 703,710 males and 683,820 females.

#### 4.1.2 The Population Number According to the Post Enumeration Survey

The aim of conducting a post enumeration survey is to measure the coverage rates of individuals in the Population and Housing Census in order to take such rates into consideration when the population number is projected in the years following the Census. The post enumeration survey shows that the population of the Gaza Strip is 1,416,966 based on the findings of the post enumeration survey and the under-coverage rate is 2.1%.

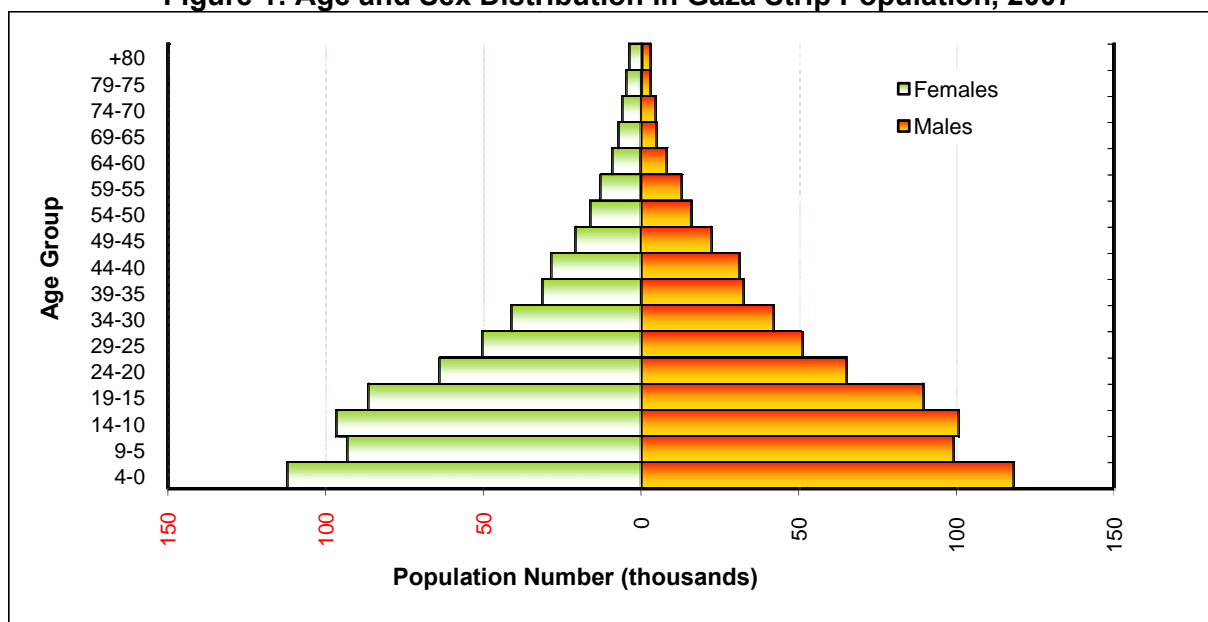
### 4.2 The Basic Demographic and Social Characteristics of the Population

#### 4.2.1 Population Age Structure

Palestinian society in the Gaza Strip is still a young society according to the final results. The number of people aged 0-14 years in the Gaza Strip totals 617,799 or 44.5% of the total population. The number of people aged 15-64 is 727,915 or 52.5% of the total Gaza Strip population. The population aged 65 years and over totals 35,143 or 2.5% of the total population. In addition, the age of about 0.5% of the Gaza Strip population is not stated.

Compared with the 1997 census, the past ten years have witnessed a decrease of 5.7% in the proportion of children aged between 0-14 from 50.2% in 1997 to 44.5% in 2007. In contrast, the percentage of working age population aged 15-64 years has increased substantially from 46.9% in 1997 to 52.5% of the overall population in 2007, which is an increase of 5.6%. This means that, despite the fact that Palestinian society is still young compared with other communities, the proportion of young people is decreasing over time due to low fertility rates. The total fertility rate in 2007 in the Gaza Strip was 5.0 births compared to 6.9 births in 1997.

**Figure 1: Age and Sex Distribution in Gaza Strip Population, 2007**

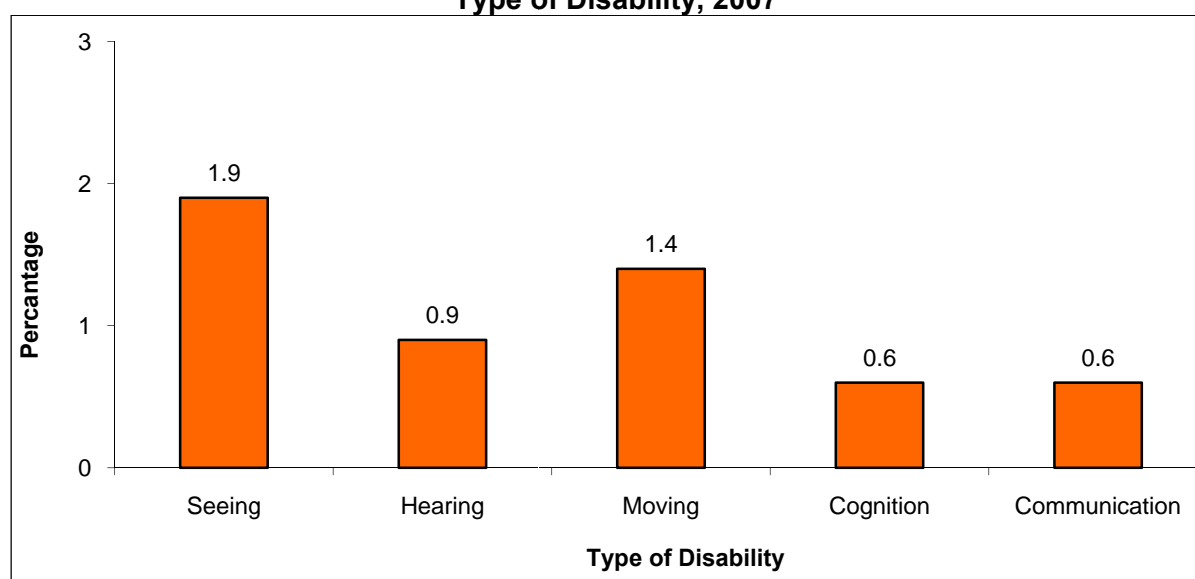


#### 4.2.2 Basic Characteristics of Disability

The final results of the Census show that the number of people with at least one disability totaled 51,432, comprising 3.7% of the population of the Gaza Strip. The distribution of disability by type is as follows: 26,168 people suffering from seeing disability (1.9%); 12,687 people suffering from hearing disability (0.9%); 19,828 people suffering from moving disability (1.4%); 8,388 people suffering from cognition disability (0.6%); and 8,477 suffering from communication disability (0.6%).

The highest percentage of people with at least one disability is in Dier al Balah governorate with 4.6% of the population while the lowest percentage of people with at least one disability is in Gaza governorate with 3.2%.

**Figure 2: Percentage of Palestinian population in Gaza Strip with One Disability by Type of Disability, 2007**

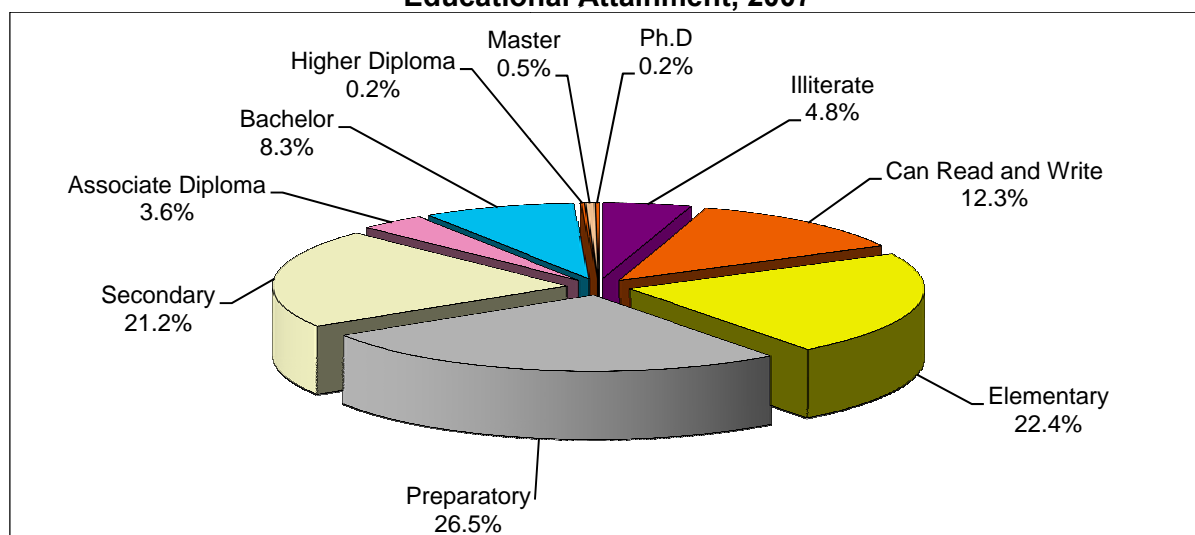


### 4.2.3 Basic Characteristics of Education

The number of people aged 5 and over attending education is 535,035 people, comprising 46.5% of the total population of the Gaza Strip.

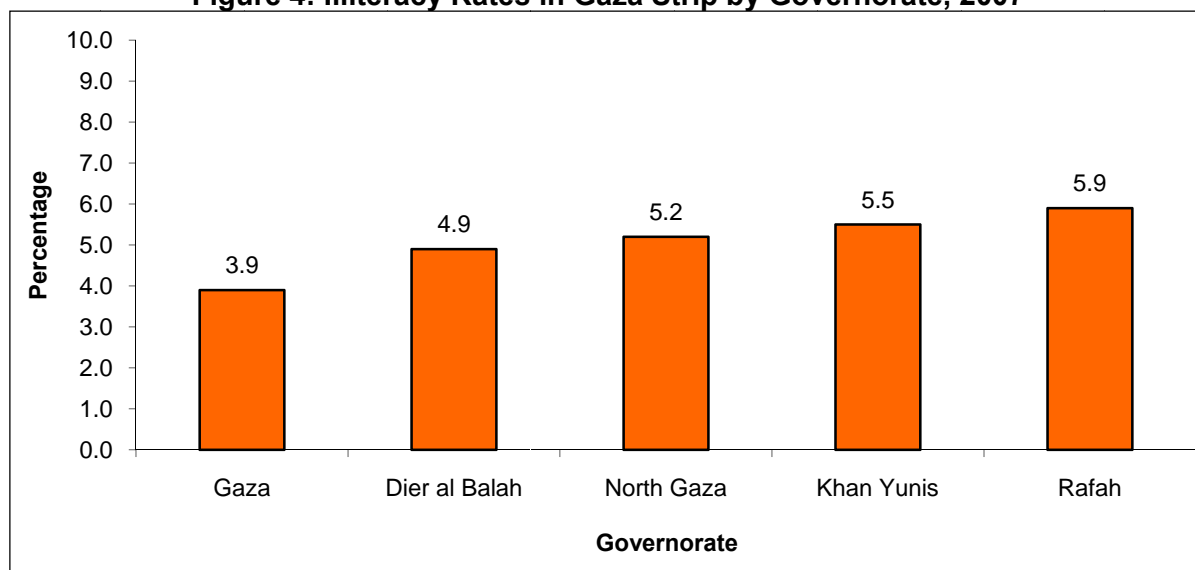
The number of people aged 10 and over with a bachelor's degree or higher is 87,560 comprising 9.1% of the total Gaza Strip population in that age group. The highest percentage of people with a bachelor's degree and higher is found in Dier al Balah governorate with 10.4% of the total population of the governorate.

**Figure 3: Percentage Distribution in Gaza Strip Population (aged 10 and over) by Educational Attainment, 2007**



Among people aged 10 years and over, 46,379 (4.8%) in the Gaza Strip are illiterate. The highest illiteracy rate is in Rafah governorate with 5.9% while the lowest illiteracy rate is in both Jerusalem and Gaza governorates at 3.9%.

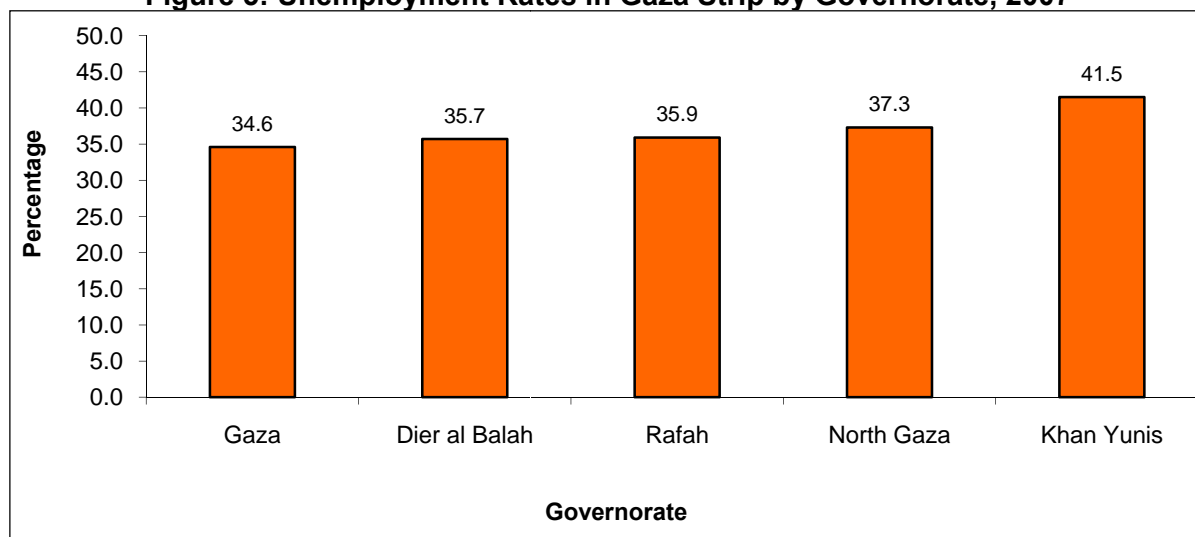
**Figure 4: Illiteracy Rates in Gaza Strip by Governorate, 2007**



#### 4.2.4 Basic Labor Characteristics

The number of unemployed people in the age group of 10 and over is 108,360 people, comprised 36.8% unemployment rate. The highest rate of unemployment in the Gaza Strip governorates is in Khan Yunis governorate at 41.5% while the lowest rate of unemployment is in Gaza governorate at 34.6%.

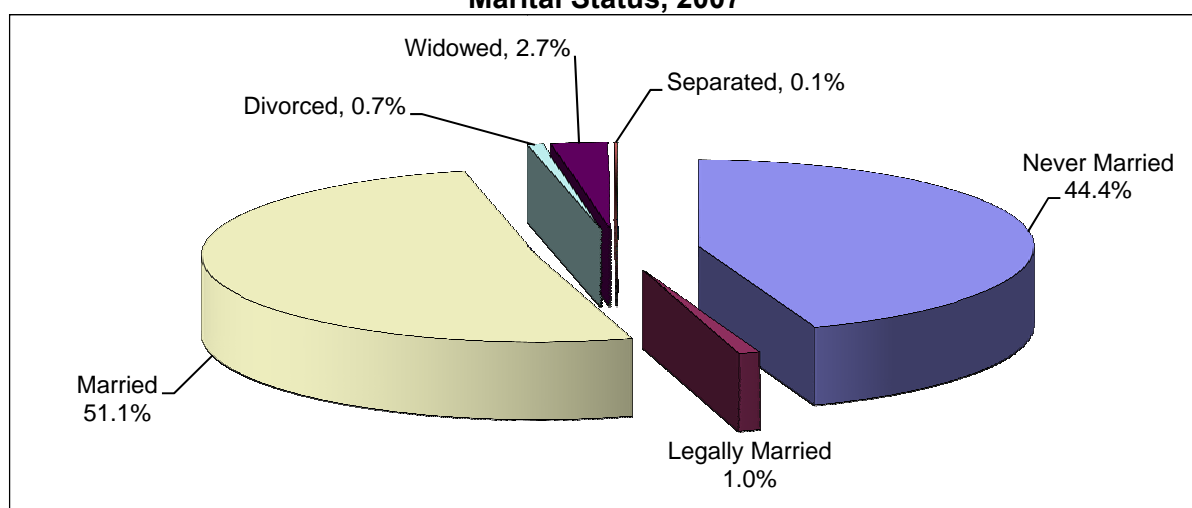
**Figure 5: Unemployment Rates in Gaza Strip by Governorate, 2007**



#### 4.2.5 Basic Characteristics of Marriage

The number of people aged 12 and over who are married in the Gaza Strip is 450,744 people, 51.1% of the population. There are 221,457 married males (49.7%) and 229,287 married females (52.4%). The number of divorced people in the Gaza Strip is 6,038 (0.7%).

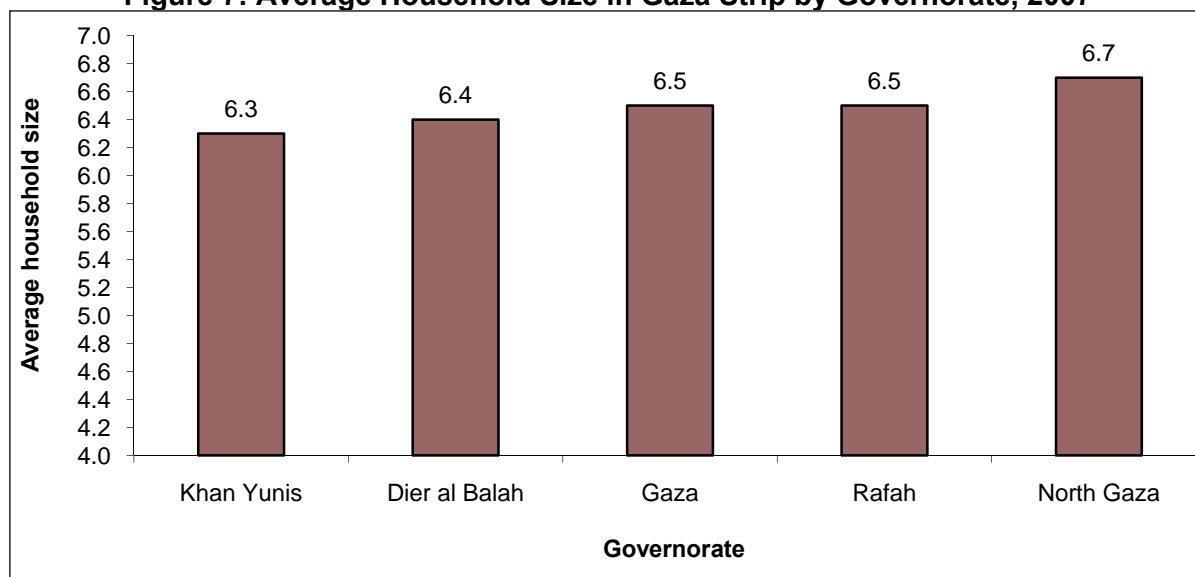
**Figure 6: Percentage Distribution of Population (12 years and over) in Gaza Strip by Marital Status, 2007**



#### 4.3 Final Results of Household Numbers

According to the final results of the population count, the number of private households actually counted in the Gaza Strip is 214,760 households. The average household size is 6.5 individuals.

**Figure 7: Average Household Size in Gaza Strip by Governorate, 2007**



The number of Palestinian nuclear families is 166,296, representing 77.8% of all Palestinian private households compared to 71.8% of households in 1997, the percentage of extended private Palestinian households in the Gaza Strip declined from 25.3% in 1997 to 19.4% in 2007, indicating that the number of nuclear household has increased in lieu of extended households. There is a slight decrease in the percentage of one-person Palestinian households from 2.6% in 1997 to 2.5% in 2007. Composite households constitute the remainder of households with 0.2% in 2007 and 0.3% in 1997.

#### **4.4 Final Results of Housing Unit Numbers**

The findings of the census show that; the number of occupied housing units in the Gaza Strip is 214,760 housing units, The apartments constitute 60.9%, houses 36.6%, villas 1.5%, 0.5% of occupied housing units represent independent rooms, Tents, marginal and other types, and 0.4% of housing units not stated the type.



## **Data Quality**

### **5.1 Introduction**

There are two types of error that can occur: statistical errors and non-statistical errors. Statistical errors occur in surveys using samples and do not exist in censuses. It is easy to measure errors and to estimate their rate since they result from errors in the sample. While non-statistical errors may occur at any stage of the implementation of the censuses or surveys, a system was required to control the quality of census data during the implementation of the second Palestinian Census of 2007 due to the many stages of work in planning and implementation that required various employees, hired for a short period, with variations in the quality of work that might affect the findings and reliability.

The main objective of the quality control program is to prevent or reduce the incidence of errors to the greatest extent possible and to detect errors in order to take appropriate measures to correct them. Without using such a program, census data might contain many errors and may not be suitable for use.

To achieve the required efficiency, a system of quality control was developed to control all stages, from the very beginning of the preparatory stage up to data processing and dissemination and to guarantee a high level of data quality. Quality control is of vital importance, particularly in the planning stage since it is connected with all stages to come. Thus, every stage was allocated enough time and procedures to ensure the high quality and reliability of census data.

### **5.2 Control Procedures in the Preparatory Stage**

The preparatory phase took into account the development of simple definitions and instructions and compatibility with international recommendations and the needs of beneficiaries in the design of questionnaires so that instructions would be communicated clearly. Attention was paid to ensure that all booklets and questionnaires would be received, stored and that all booklets and questionnaires would be entered into the computer, in addition to preparing forms to control the quality of work, and the design and selection of data entry programs in advance.

A plan was made for updating localities with an enumeration areas manual with detailed maps where every establishment, building, housing, household and individual were counted. Adequate attention was given to special localities such as those where nomads reside, since they were covered in the census. Clear and simple instructions were developed for counting personnel at border crossings and the residents of collective housing.

Procedures were also established to examine the coverage rates of individuals and households through the post enumeration survey. Also taken into account was the printing of booklets and questionnaires to validate data collection, entry and storage. A type of indexed bag was used to store the households and housing conditions booklets and buildings booklets to ensure they would be easily accessible.

Through a pilot census, comprehensive testing was done for all questionnaires, tools, procedures, forms, fieldwork and office editing, PES, printing of questionnaires and manuals, selection of data entry programs and error detection programs, reviewing lists, coding



manuals and tabulation processes and preparatory stage dissemination in advance. The expected requirements of human and financial resources and a time schedule for the completion of all activities in this stage were estimated in advance.

### **5.3 Control Procedures in the Implementation Stage**

#### **5.3.1 Selection and Training of Employees**

Given the magnitude of this project, the multiple levels, and the volume of employees, it was necessary to develop procedures to ensure the collection of reliable data. Maps of each area were updated under continuous supervision from the project management, who re-divided enumeration areas according to the ability of fieldworkers in various activities so as to achieve results on time.

The most qualified unemployed people were selected as employees, particularly those with higher scientific qualifications, of whom there are many in nearly all the governorates, except for Ramallah and Al-Bireh and Jerusalem where we had to employ a small number of Palestinian university students as enumerators. Fieldworkers had to be from the same locality to guarantee their efficiency in carrying out their work.

Plans and training programs for all employees were prepared in advance: census managers were trained in the governorates first, then they trained supervisors who participated in the training of enumerators and observers. As a precaution, at each stage PCBS trained an additional 30% more than the required number of employees as back-up staff in case of the resignation, dismissal, emergency conditions, or low achievement of existing staff.

#### **5.3.2 Data Collection**

Fieldworkers were distributed so that each supervisor had responsibility for managing five observers. Each observer supervised five enumerators, while each enumerator had to collect data for about 150 housing units within 15 days. The selection of employees was based on a standard assessment test and the individuals with the highest grades were selected and employed. The census directors (PCBS managers) were selected for their considerable experience in administrative and statistical work and some PCBS statisticians and fieldworkers were appointed to work as supervisors.

For counting purposes, the direct interview technique was used to obtain data from the head of household, or from a reasonable adult person. In the absence of the head of household or suitable person, the enumerator paid other visits to the household at different periods of time until data could be collected from a qualified individual.

Enumerators depended on official documents to collect basic data such as name, date of birth, identification number. They submitted a reminder questionnaire to the households to fill in the basic data required prior to the actual counting to save time and facilitate the task for both households and enumerators. Specific instructions were given to all employees at every level on how to conduct fieldwork and desk reviews and how to review and correct errors. The supervisor, for example, had to personally check at least two percent of the questionnaires from the observer and enumerator, in addition to checking the coverage and quality of data, particularly on the first days of work, and supervising the daily desk and fieldwork. Observers had to collect five percent of the data from the households where the enumerator had worked to ensure household coverage and the consistency of individual data, and notify the enumerators of their errors.

Every supervisor had to meet their fieldworkers on a daily basis to give new directions and instructions received from the operations room to correct errors that had occurred on the previous day. These supervisors had to conduct a daily desk review of what had been achieved by their subordinates. A campaign accompanied the activities of the census with the use of all means of media to encourage greater cooperation by citizens with census teams.

Many types of forms were developed regarding daily achievements and follow up, the preliminary findings and related materials, documents, supplies or deliveries received, monitoring of employees' work hours and follow up forms of household coverage.

A central operations room was formed at the PCBS headquarters in the West Bank and another in the Gaza Strip whose main task was to work 24 hours a day, including technicians, administrators and support services, to answer queries, meet needs and requirements and issue any general written instructions. In addition, a group of assistants in each governorate assisted the census director.

This census was also significant for using decentralized databases in the governorates through which the daily achievements of employees were registered and which controlled all technical and administrative work processes at every stage. This helped the census management and central operations room at PCBS headquarters to monitor work at various levels and take necessary action at the correct time.

The post enumeration survey was implemented for four percent of the total enumeration areas to examine the coverage rates of individuals and households and a complete re-count of all households and individuals in selected enumeration areas was conducted. This study showed that the under-coverage of individuals was three percent in the West Bank.

### **5.3.3 Refusal Cases**

Several procedures were developed to cope with cases of refusal by private citizens, especially in the Jerusalem governorate and surrounding communities as a result of Israeli harassment of Palestinians residing in these areas. These procedures included field visits by members of the central operations room and the participation of officials.

## **5.4 Control Procedures in the Data Processing Stage**

The data processing stage includes editing, coding, data entry, reviewing lists and checking all previous operations of data entry for all enumeration areas. All procedures and instructions were conducted to check the consistency of the data and coding fields and ensure the entry of all enumeration areas and booklets and questionnaires, with their content of buildings and housing units, households and data on individuals. As booklets and questionnaires required checking and moving from one operation site to another, a store was prepared for all the documents to be indexed and categorized and the store keeper controlled the flow of documents.

Coding manuals were prepared and examined beforehand, as well as the instructions for editing and coding procedures to check the consistency of the data and how to detect and correct errors. All editing and coding employees were selected from among the best fieldworkers who collected the data from households and individuals. Training was conducted centrally to ensure uniform concepts and to eliminate disparities in fieldwork in all governorates. Editing, coding and testing the consistency of 100% of the questionnaires was

conducted, in addition to desk reviewing, editing and coding (100%) in order to eliminate differences between individual editors and to discover and correct errors and circulate them daily.

Tests were held for all applicants for data entry and those who performed best were trained centrally in a uniform procedure of data entry. During the first three days, all data entered were deleted and re-entered again to correct errors and inform employees so as to avoid such errors in the future. Certain procedures were adopted to ensure correct data entry: in the first stage a unique separate file was prepared for each enumeration area that included identification data (to ensure coverage), the number of households and the total number of booklets to ensure that all booklets and all households had been entered. Upon data entry, a thorough examination of the identification data and the range of each digital key question was conducted so that the computer did not accept any figure outside this range. For example, the relationship of the head of the household, sex and all the pre-coded questions in the household and housing conditions questionnaire, and the type of building in the buildings questionnaire. The remaining questions were exposed to a comprehensive re-examination of the range of each question after data entry and the extraction of error lists resulting from data inconsistency.

After data entry, certain lists were extracted to ensure the coverage of all enumeration areas, buildings, housing units, households and individuals, and to examine the internal consistency of the data of each unit. The procedures used were to extract error lists that must be corrected or questioned. These lists were submitted to the best reviewers under full supervision of the technical operations in the census directorate.

Specific previously prepared programs were used to detect errors according to the following procedures:

1. A manual was prepared of instructions for desk editing and procedures for the questionnaire of household and housing conditions. A set of desk editing instructions were printed and the procedures for the buildings questionnaire containing tests designed to ensure the coverage of data entry, to detect inconsistencies or to detect abnormal and rare cases. These were reviewed and printed with a name and number given to every error in the manual.
2. A list was extracted for each enumeration area, including the identification data of each building, housing unit, household or individual message (type of check) and the number printed in the manual. The auditor could then recognize the message name and type of error, location and procedures of editing and audit procedures patch, which consists of more than six hundred checks on several stages.
3. Lists were submitted to the reviewers to return to the original booklets. If the error was caused by data entry, it would be corrected on the list. If the error was due to fieldwork, all associated questions should be considered for correction. For example, if the type of housing was a tent or a separate room, the number of rooms must be one by definition. The first check would be conducted through manual editing, then extracting the electronic lists after data entry for such types of tests, then they would be corrected manually on the original booklets and data re-entered correctly. As for the coverage test, there is a key reference that contains all enumeration areas and shows the number of booklets and households in the enumeration area to be entered on the computer. At this point, if there was a variation between the number of booklets and households actually entered and the total number of households in the file of each area, an error message

appears to request correction. Through this method, we ensured that 100% of the households were entered. By the same method, we ensured that all household members were entered through connecting the manually prepared summary of household members and the entered data of each household, and the number of individuals distributed by sex by the individual number in the household to ensure that 100% of household members were counted and entered according to their gender. In addition, there was a unique sequence number for each household in the enumeration area.

Cases which were non applicable were coded as such and represented by the figure 9 according to the number of digits for each question, unless there was a certain indication that led to selecting the suitable answer for variables, such as gender and the relationship of head of household in the questionnaire of households and housing conditions.

1. All enumeration area lists were extracted in this way and all kinds of tests.
2. Amended lists were sent back to data entry to be entered and corrected and a copy of the daily entered data was kept in several different places.
3. Previous stages were conducted twice or more until the data of each enumeration area became clean.
4. All files were compiled for enumeration areas of each locality of each governorate. Then, all tables and any additional tests were conducted with the participation of specialists in different areas (demography, education, labor force, housing, buildings, etc.) to test the data before the final tabulation in order to correct errors according to the aforementioned procedures.

## **5.5 Data Quality Assurance**

The process of census results evaluation by estimating the values of errors and trends is considered to be a necessary process to answer questions concerning the accuracy and coverage of census data and to defend the credibility of findings. There are several methods and tools to evaluate the results of the census in terms of coverage and content, which include either a single source of data (the census itself) or multiple sources. The use of multiple sources, in turn, may take two forms: either by comparing the booklets of individuals or comparing the overall values.

The quality testing program for the Census 2007 contains several methods for measuring the quality and coverage of data and trends, focusing on several areas such as the post enumeration survey (matching individual booklets), comparison with administrative booklets, comparison with the results of household surveys, and conducting demographic analysis. The following is a detailed explanation of these areas:

### **5.5.1 Post Enumeration Survey (PES)**

The post enumeration survey is a sample survey conducted shortly after the census to assess the census. PES usually consists of two types of match studies: an identical study to measure coverage errors and a re-interview survey for the purposes of assessing errors in the content of census data with respect to population indicators.

The PES is usually the only reliable method of measuring errors in census coverage in developing countries, if we take into account the lack of accurate administrative registers and the limited availability of accurate demographic data on fertility, mortality and internal migration. In addition, the method of matching individual records provides the possibility of

obtaining separate estimates on both coverage errors and content errors, which is not easily achieved in studies that do not adopt the method of matching individual records.

In the PES, the quality control of data is easier due to the limited area of study, that is, a sample of areas. On the other hand, the PES process includes an additional operation that is not included in the census, which is the matching process between census booklets and the booklets of PES and this additional step would include non-statistical errors. Due to this, all supervisors and enumerators should be prepared and well qualified, with a rate of supervisors to enumerators of one to five. It is essential to appoint professional and adequately trained officials at all stages.

Although the PES was not designed to be fully independent of the census, as the enumeration areas of the census will be used as preview units for the PES, the following points should be taken into account:

1. The return of all census questionnaires from the field before the start of counting in the PES.
2. Counting the areas of the PES by teams of fieldworkers, excluding those who worked as enumerators in the census. (It is logical to employ census supervisors and observers to work in the PES in order to benefit from their experience, as long as they are appointed to work in areas other than those they worked in during the census.)
3. The employees of the PES must not have any prior information about census findings in the enumeration areas in which they are going to work.
4. The employees of the census also must not know which enumeration areas will be selected to conduct the PES later.
5. The data of the PES must be processed separately from the census data.

### **Description of Used Frame**

The frame of the PES includes all the enumeration areas of the Census-2007, which totaled 4,916 enumeration areas distributed in all governorates of the West Bank and Gaza Strip. To implement the PES, 218 enumeration areas were chosen to be a stratified cluster sample designed for a single-stage, where all households in the selected enumeration areas in the sample were collected.

### **5.5.2 Assessment of Coverage Based on PES**

The rate of coverage was estimated for individuals nationally and key areas of research. The following table shows these percentages for the West Bank

**Percentages of coverage and under-coverage rates for individuals in governorates in Gaza Strip**

| <b>Governorate</b> | <b>Coverage Rates</b> | <b>Under-coverage Rates</b> |
|--------------------|-----------------------|-----------------------------|
| <b>Gaza Strip</b>  | <b>97.9%</b>          | <b>2.1%</b>                 |
| North Gaza         | 98.1%                 | 1.9%                        |
| Gaza               | 97.6%                 | 2.4%                        |
| Dier al Balah      | 97.7%                 | 2.3%                        |
| Khan Yunis         | 98.2%                 | 1.8%                        |
| Rafah              | 98.4%                 | 1.6%                        |

### **5.5.3 Internal Data Consistency Testing**

Given the fact that the Population, Housing and Establishments Census-2007 is the second census on population, households, individuals, buildings and housing units and their detailed characteristics, the issue of testing data quality by all possible means was of paramount importance, especially internal data consistency and comparing the findings with other surveys.

Based on the distinct experience of the census, certain instructions were developed during fieldwork implementation to assure high data quality and to develop procedures and forms to control supervision and follow up.

Certain rules for desk editing and procedures to detect consistency errors and correct them were drawn up. During the cleaning process, many tables and detailed editing were extracted, reviewed and tested by the census directorate and by those concerned with the subject from other directorates.

In addition, a copy of the raw data was handed over to each subject specialist to test the accuracy, data quality and consistency of procedures before the process of extracting the final tables and to make any adjustments required.

### **5.5.4 Comparison of Findings with Other Sources**

The census data and indicators were compared by the subject specialists and census directorate with the common data and indicators of surveys. A comparison was conducted between the key indicators and the derived rates from census data in several areas. Comparison was made with indicators of the Household Health Survey 2006, Demographic Survey 2004 and Health Survey 2000, in addition to comparisons with the previous census findings of 1997, particularly with regard to population, distribution of gender and age, total fertility rates, average household volume and household composition. The results indicated considerable consistency between them. Comparison of disability indicators with Census-1997 findings and the Health Survey 1996 was difficult and even impossible due to variations of the concepts of disability and difficulty.

With regard to housing and housing conditions, data were compared with common indicators of census and household surveys, particularly indicators of the number of rooms per household, housing density, and the type of housing. In general, most results were close and logical.

When comparing the Census-2007 with Census-1997 indicators and with certain selected surveys, the results were as illustrated in the table below. The data were of high quality and differences are logical and justified. There is consistency between indicators drawn from different sources, taking into account the reference date and work methodologies to explain variances where they exist.

**Comparison Table Between Selected Indicators in Census and Some Surveys**

| Indicator  | Census 1997 | Health Survey 2000 | Demographic Health Survey 2004 | PAPFAM 2006 | Census 2007 |
|--|-------------|--------------------|--------------------------------|-------------|-------------|
| Sex Ratio  | 103.1       | 101.7              | 102.6                          | 102.7       | 102.9       |
| Median age   | 14.0        | 15.0               | 15.0                           | 15.0        | 16.0        |
| <b>Age distribution</b>                            |             |                    |                                |             |             |
| 0-14   | 50.2        | 40.2               | 48.7                           | 48.8        | 44.5        |
| 15-64  | 46.9        | 46.9               | 48.6                           | 48.9        | 52.5        |
| 65+  | 2.9         | 2.9                | 2.7                            | 2.3         | 2.5         |
| Not Stated   | 0.0         | 0.0                | 0.0                            | 0.0         | 0.5         |
| <b>Proportional distribution of the households</b> |             |                    |                                |             |             |
| consisted of One person                            | 2.6         | 2.3                | 3.0                            | 2.4         | 2.5         |
| Nuclear household                                  | 71.8        | 74.3               | 83.5                           | 73.0        | 77.5        |
| Extended household                                 | 25.3        | 23.0               | 13.4                           | 24.5        | 19.4        |
| Compound household                                 | 0.3         | 0.4                | 0.1                            | 0.1         | 0.2         |
| Household Size                                     | 6.9         | 6.9                | 6.2                            | 7.0         | 6.5         |
| No. of persons per room                            | 2.1         | 2.0                | 2.0                            | 1.9         | 1.8         |

### 5.5.5 Treatment of Not Stated

**Percentage of Not Stated in Gaza Strip for Selected Indicators**

| Indicators              | Percentage of not Stated % |
|-------------------------|----------------------------|
| Age                     | 0.5                        |
| Marital status          | 0.1                        |
| Refugee Status          | 0.0                        |
| Religion                | 0.4                        |
| Type of housing unit    | 0.4                        |
| Relation to labor force | 0.2                        |
| Enrollment in education | 0.1                        |

### 5.5.6 Use of Demographic Analysis Methods

The use of demographic analysis methods to assess the population data of censuses is considered one of the common methods for assessing the quality of data. It can assess the data of age, age structure and sex in the community through estimating certain demographic measures. The following were conducted:

- Calculating some index numbers to measure the accuracy of age data and preference of individual age such as: Myers number, Patchi, Wipple and the Secretariat of the United Nations.
- Calculating the percentages of different age groups.
- Calculating the sex ratio for age groups.
- Calculating the percentage of not stated.
- Examining internal consistency between the relevant variables when extracting the tables.

This had logical and acceptable results within the standards and recommendations.