

(2010 )

2011 /

2006

.2011 - 1432 ©

:

(2010 )

.2011

:

- 1647 . .

(+970/972) 2 2982700 :

(+970/972) 2 2982710 :

1800300300 :

diwan@pcbs.gov.ps :

<http://www.pcbs.gov.ps> :

(PNA) (2010 )

2010 (CFG)  
. (SDC)

. (CFG)

•

•

•

•

•

2009

1996

:

.2009

2008 2006 2005 1998

2009 2007 2002

2005

2004

2009

.2010

**2011**

<b>15</b>			:
<b>17</b>			:
<b>19</b>			:
19	2010		1.3
19		2010	2.3
20		2010	3.3
20		2010	4.3
22		2010	5.3
<b>23</b>			



<b>25</b>	2010		<b>:1</b>
<b>26</b>			<b>:2</b>
		2010	
<b>26</b>	2010		<b>:3</b>
<b>27</b>			<b>:4</b>
		2010	
<b>28</b>	2010		<b>:5</b>
<b>30</b>	2010		<b>:6</b>
<b>32</b>		( / )	<b>:7</b>
		2010	
<b>19</b>	2010		<b>:1</b>
<b>20</b>	(2010 - 1999)		<b>:2</b>
<b>21</b>	2010		<b>:3</b>
<b>21</b>	2010		<b>:4</b>



2010

4,719 2010 94 10,169 •

2009 2,020 2010 •

%12.8 %18.8

%17.3 %41.3 •

.2009 %12.5

262 1,516 1,778 •

%7.9 %0.3

.2009

%36.0 %8.9 170,671 •

.%12.5

) 2009 %19.8 •

.%23.9 (2010 •

%44.9 •

. %16.3 %36.4

370,966 •

%19.0 (2010 ) 2009 •

. %21.8

.2010 ( / ) 2.2 •

1996

.2010



.

:

:

:

:

.( )

:

:

:( )

. /

:

:( )

( )

:( )

( )

( )

:

:

:

:

:

:

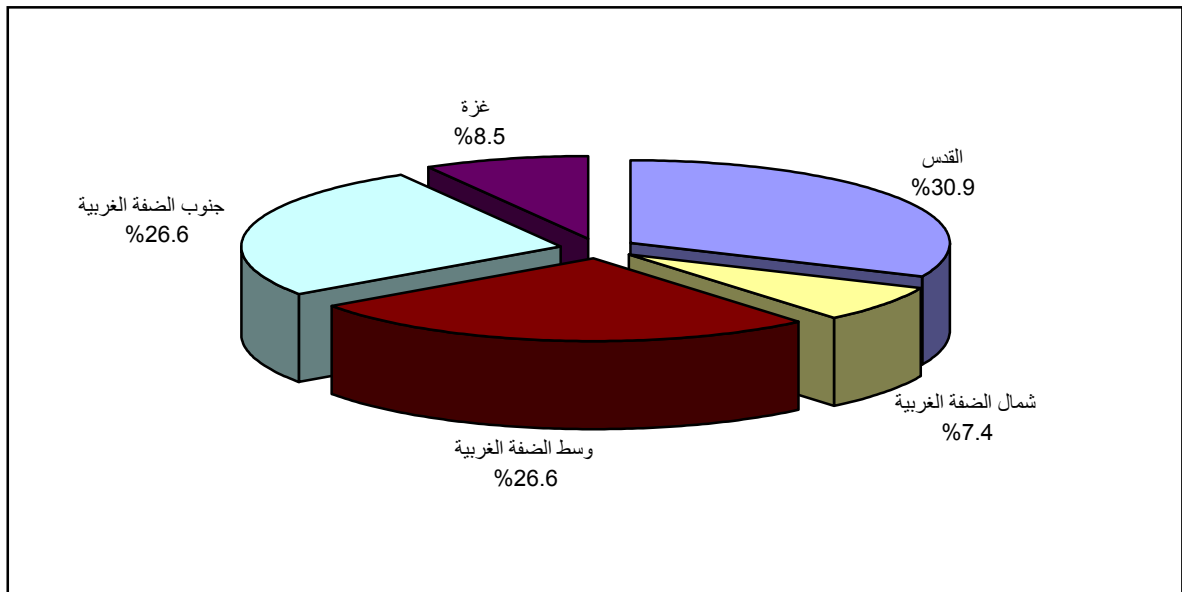
2010

		102	
4,719	2010	94	10,169

	<b>2010</b>		<b>1.3</b>
.	364	166	7 :
.	2,174	935	25 :
.	3,165	1,452	29 :
.	4,007	1,873	25 :
.	459	293	8 :

2010

(1):



2010

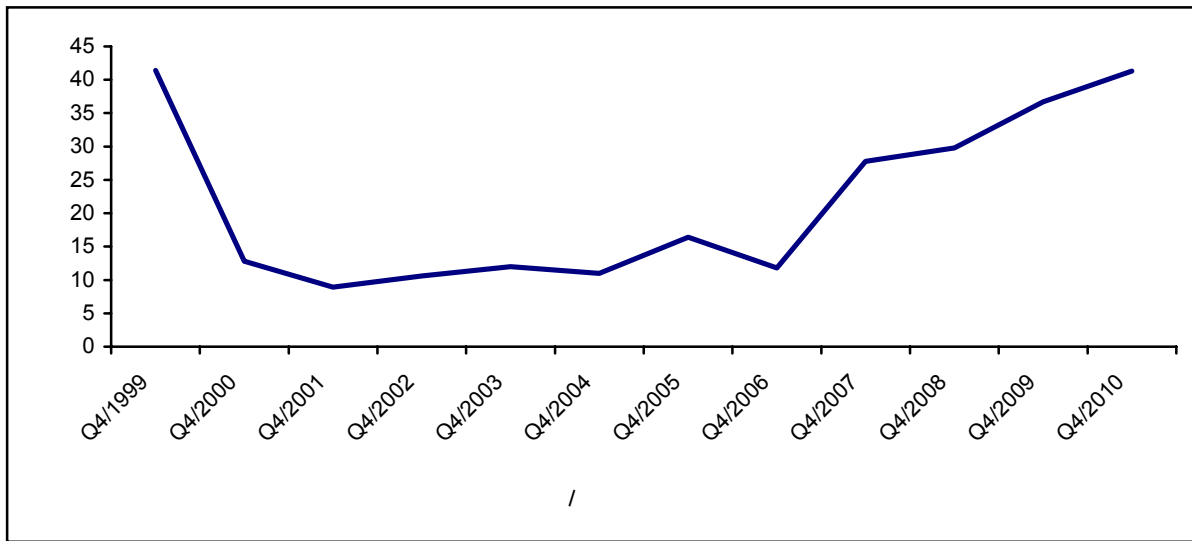
2.3

%41.3

2,019.7

(2010 - 1999)

:(2)

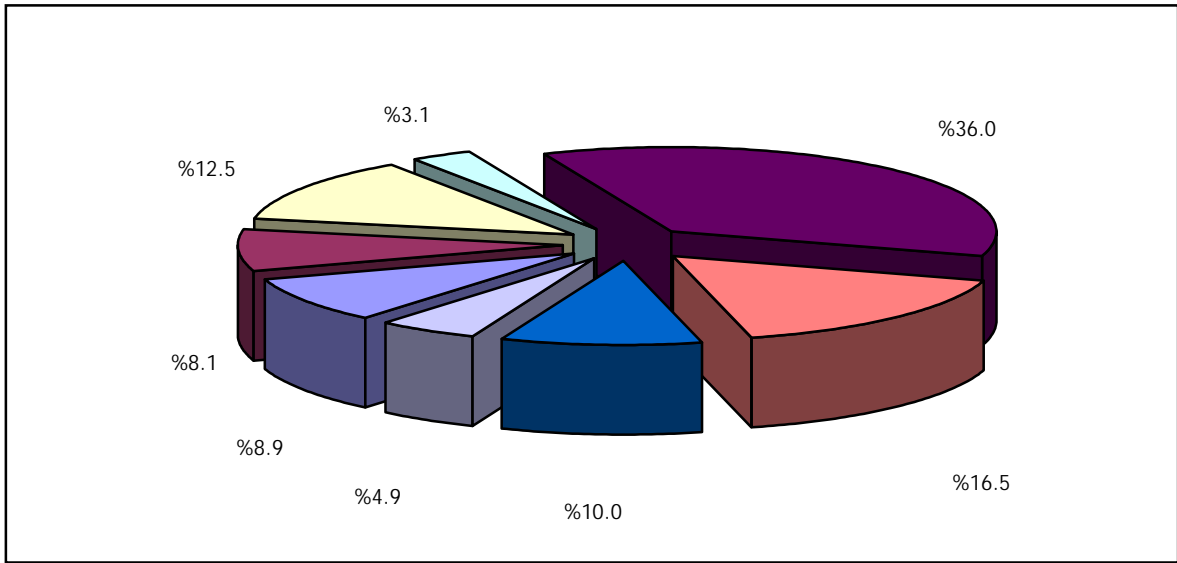


				<b>2010</b>		<b>3.3</b>
		262	1,516	1,778		
.	192	1,258	1,450	70	258	328
%7.9		%0.3		2010		
				.2009		

				<b>2010</b>		<b>4.3</b>
%8.9	170,671		2010			
					%36.0	
	%19.8			2009		%12.5
				.(2010	)	%23.9
				%44.9		
%2.2					%16.3	%36.4
						%0.2

2010

:(3)



2010

370,966

%39.7

%9.0

%.12.0

%21.8

%19.0

2009

.(2010 )

%14.7

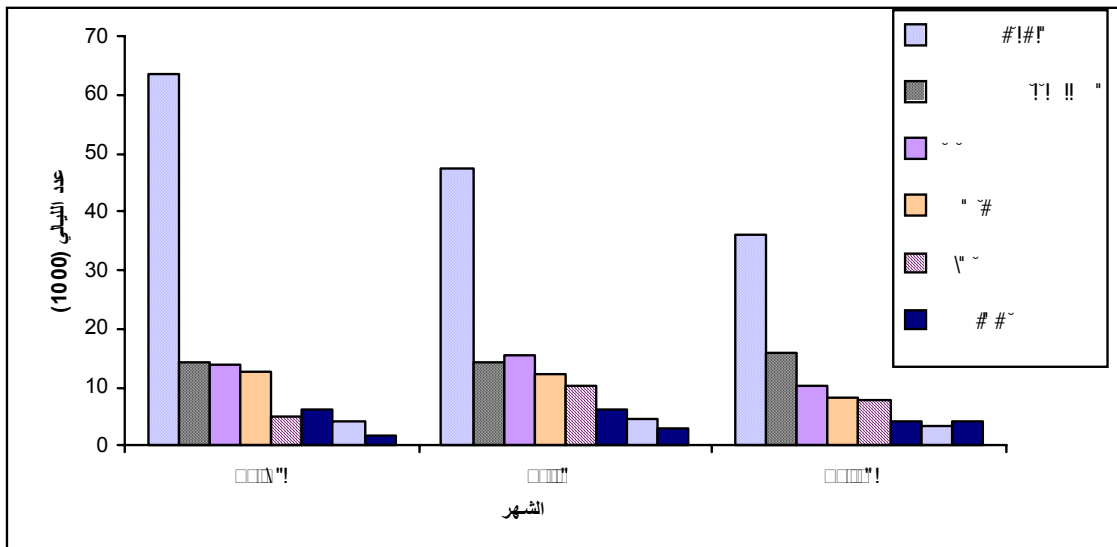
%41.3 :

%0.2

%1.5 % 42.3

2010

:(4)





2010

5.3

2.2

2.9

1.5

2.5

2.0

2010

.(2009

)

(2010

)

2009

2010

نسبة التغير (%) مقارنة مع		قيمة المؤشر الربع الرابع 2010	المؤشر
الربع الرابع 2009	الربع الثالث 2010		
-3.1	0.0	94	عدد الفنادق العاملة كما في نهاية الربع
7.9	-0.3	1,778	متوسط عدد العاملين خلال الربع
19.8	23.9	170,671	عدد النزلاء
19.0	21.8	370,966	عدد ليلي المبيت
12.8	18.8	2,019.7	متوسط إشغال الغرف
19.0	21.8	4,032.2	متوسط إشغال الأسرة
12.5	17.3	41.3	نسبة إشغال الغرف %
22.2	19.5	38.4	نسبة إشغال الأسرة %

# Tables

2010

:1

Table 1: Main Indicators for Hotel Activities by Month and Region During the Fourth Quarter, 2010

Region	Month	Bed Occupancy		Room Occupancy		No. of Nights	No. of Guests	No. of Beds	No. of Rooms	No. of Hotels	
		%	Average	%	Average						
<b>Palestinian Territory *</b>		<b>38.4</b>	<b>4,032.2</b>	<b>41.3</b>	<b>2,019.7</b>	<b>370,966</b>	<b>170,671</b>	<b>10,510</b>	<b>4,891</b>		*
<b>All Regions</b>	<b>October</b>	<b>42.4</b>	<b>4,519.6</b>	<b>43.9</b>	<b>2,174.1</b>	<b>140,108</b>	<b>62,872</b>	<b>10,652</b>	<b>4,958</b>	<b>97</b>	
	<b>November</b>	<b>42.0</b>	<b>4,493.7</b>	<b>43.2</b>	<b>2,159.2</b>	<b>134,811</b>	<b>61,202</b>	<b>10,709</b>	<b>4,996</b>	<b>98</b>	
	<b>December</b>	<b>30.5</b>	<b>3,098.3</b>	<b>36.7</b>	<b>1,730.4</b>	<b>96,047</b>	<b>46,597</b>	<b>10,169</b>	<b>4,719</b>	<b>94</b>	
North of West Bank	October	13.3	48.5	17.9	29.7	1,504	962	364	166	7	
	November	21.2	77.2	27.4	45.4	2,316	1,664	364	166	7	
	December	17.4	63.4	21.8	36.3	1,966	1,296	364	166	7	
Middle of West Bank	October	34.0	824.1	61.0	657.9	25,546	14,695	2,422	1,078	25	
	November	25.7	649.2	42.4	482.1	19,475	9,895	2,528	1,138	27	
	December	13.9	301.3	26.1	243.9	9,339	3,213	2,174	935	25	
Jerusalem	October	47.4	1,513.9	73.4	1,076.4	46,930	22,630	3,195	1,467	30	
	November	53.6	1,711.7	83.2	1,220.2	51,350	25,568	3,195	1,467	30	
	December	55.9	1,769.0	84.7	1,230.4	54,838	28,352	3,165	1,452	29	
South of West Bank	October	53.0	2,123.7	21.6	403.5	65,834	24,483	4,007	1,872	25	
	November	51.1	2,049.6	21.7	407.3	61,487	23,999	4,007	1,873	25	
	December	23.9	958.9	11.6	217	29,726	13,609	4,007	1,873	25	
Gaza Strip**	October	1.4	9.5	1.7	6.6	294	102	664	375	10	**
	November	1.0	6.1	1.2	4.2	183	77	615	352	9	
	December	1.3	5.7	1.0	2.9	178	127	459	293	8	

\* Represents the quarter average except number of guests and number of guest nights which represent the total for the quarter.

\*\* Estimated data.

\*

\*\*

2010

:2

**Table 2: Number of Hotels and Rooms by Facilities and Region as of December, 2010**

Region	Facilities								No. of Rooms	No. of Hotels
	Internet	Telephone	Air Conditioning	Heating	Refrigerator	T.V	Radio	Private Bathroom		
<b>Palestinian Territory</b>	<b>2,428</b>	<b>4,390</b>	<b>4,314</b>	<b>4,379</b>	<b>3,377</b>	<b>4,290</b>	<b>1,157</b>	<b>4,674</b>	<b>4,719</b>	<b>94</b>
North of West Bank	118	149	149	149	149	149	0	149	166	7
Middle of West Bank	765	883	935	905	756	895	104	933	935	25
Jerusalem	494	1,376	1,321	1,383	1,072	1,252	1,028	1,406	1,452	29
South of West Bank	857	1,683	1,654	1,859	1,149	1,721	0	1,872	1,873	25
Gaza Strip	194	299	255	83	251	273	25	314	293	8

2010

:3

**Table 3: Number of Hotels by Availability of Public Services and Region as of December, 2010**

Region	Public Services											No. of Operating Hotels
	Other	Room Services	Shops	Laundry	Photocopying	Cofeshop	Typing	Bar	Internet	Fax	Puplic Telephone	
<b>Palestinian Territory</b>	<b>23</b>	<b>81</b>	<b>15</b>	<b>57</b>	<b>86</b>	<b>56</b>	<b>80</b>	<b>55</b>	<b>73</b>	<b>82</b>	<b>19</b>	<b>94</b>
North of West bank	1	7	1	4	5	4	4	0	4	4	1	7
Middle of West bank	20	25	1	15	23	17	20	9	21	24	3	25
Jerusalem	0	22	1	18	26	21	26	19	20	29	1	29
South of West bank	2	25	7	16	24	13	22	19	25	25	6	25
Gaza Strip	0	2	5	4	8	1	8	8	3	0	8	8

2010

:4

Table 4: Average Number of Workers in Hotels by Type of Work, Sex and Region During the Fourth Quarter, 2010

Region	Total			Operation			Administration			* No. of Hotels*
	Total	Females	Males	Total	Females	Males	Total	Females	Males	
<b>Palestinian Territory</b>	<b>1,778</b>	<b>262</b>	<b>1,516</b>	<b>1,450</b>	<b>192</b>	<b>1,258</b>	<b>328</b>	<b>70</b>	<b>258</b>	<b>94</b>
North of West Bank	66	9	57	41	5	36	25	4	21	7
Middle of West Bank	534	59	475	435	41	394	99	18	81	25
Jerusalem	580	80	500	473	54	419	107	26	81	29
South of West Bank	496	109	387	426	90	336	70	19	51	25
Gaza Strip	102	5	97	75	2	73	27	3	24	8

\* As in December, 2010

2010

\*

2010

:5

Table 5: Number and Percentage of Guests by Nationality and Region During the Fourth Quarter, 2010

Region	Month	Nationality										No. of Hotels
		U.S.A & Canada		Asia		Israel		Arab Countries		Palestine		
		%	Number	%	Number	%	Number	%	Number	%	Number	
<b>Palestinian Territory</b>		<b>12.5</b>	<b>21,321</b>	<b>10.0</b>	<b>17,059</b>	<b>8.1</b>	<b>13,885</b>	<b>0.2</b>	<b>412</b>	<b>8.9</b>	<b>15,216</b>	
<b>All Regions</b>	<b>October</b>	<b>10.8</b>	<b>6,813</b>	<b>9.6</b>	<b>6,008</b>	<b>4.4</b>	<b>2,760</b>	<b>0.2</b>	<b>125</b>	<b>9.4</b>	<b>5,911</b>	<b>97</b>
	<b>November</b>	<b>11.2</b>	<b>6,863</b>	<b>10.7</b>	<b>6,575</b>	<b>10.2</b>	<b>6,242</b>	<b>0.3</b>	<b>199</b>	<b>8.9</b>	<b>5,461</b>	<b>98</b>
	<b>December</b>	<b>16.4</b>	<b>7,645</b>	<b>9.6</b>	<b>4,476</b>	<b>10.5</b>	<b>4,883</b>	<b>0.2</b>	<b>88</b>	<b>8.2</b>	<b>3,844</b>	<b>94</b>
North of West Bank	October	3.8	37	0.5	5	38.9	374	0.8	8	38.3	368	7
	November	2.8	46	0.0	0	61.1	1,016	1.2	20	22.5	375	7
	December	1.7	22	0.5	7	66.5	862	1.2	15	24.1	312	7
Middle of West Bank	October	14.1	2,078	9.8	1,447	5.7	836	0.6	89	17.4	2,560	25
	November	12.0	1,187	8.0	790	16.5	1,628	0.9	93	26.9	2,661	27
	December	3.5	113	1.2	39	20.8	667	1.5	49	60.3	1,939	25
Jerusalem	October	18.1	4,103	10.4	2,347	4.8	1,090	0.0	0	0.0	0.0	30
	November	20.4	5,228	8.2	2,086	10.9	2,779	0.3	75	0.0	0.0	30
	December	25.2	7,151	10.2	2,884	6.4	1,804	0.0	0	0.0	0.0	29
South of West Bank	October	2.4	595	9.0	2,209	1.9	460	0.1	20	12.0	2,932	25
	November	1.6	376	15.4	3,699	3.4	819	0.0	8	10.0	2,394	25
	December	2.6	359	11.4	1,546	11.4	1,550	0.0	1	11.5	1,566	25
Gaza Strip	October	0.0	0	0.0	0	0.0	0	7.7	8	50.0	51	10
	November	34.0	26	0.0	0	0.0	0	4.3	3	40.4	31	9
	December	0.0	0	0.0	0	0.0	0	18.2	23	21.2	27	8

2010

:( ) 5

Table 5 (Cont.): Number and Percentage of Guests by Nationality and Region During the Fourth Quarter, 2010

Region	Month	Total		Nationality									
				Australia & Newzeland		Africa		Other European Countries		European Union		Central & South America	
		%	العدد Number	%	العدد Number	%	العدد Number	%	العدد Number	%	العدد Number	%	العدد Number
<b>Palestinian Territory</b>		<b>100</b>	<b>170,671</b>	<b>1.1</b>	<b>1,829</b>	<b>3.1</b>	<b>5,294</b>	<b>16.5</b>	<b>28,217</b>	<b>36.0</b>	<b>61,262</b>	<b>3.6</b>	<b>6,176</b>
<b>All Regions</b>	<b>October</b>	<b>100</b>	<b>62,872</b>	<b>2.1</b>	<b>1,308</b>	<b>1.4</b>	<b>868</b>	<b>17.5</b>	<b>11,025</b>	<b>40.2</b>	<b>25,258</b>	<b>4.4</b>	<b>2,796</b>
	<b>November</b>	<b>100</b>	<b>61,202</b>	<b>0.7</b>	<b>408</b>	<b>2.4</b>	<b>1,463</b>	<b>19.7</b>	<b>12,053</b>	<b>32.5</b>	<b>19,843</b>	<b>3.4</b>	<b>2,095</b>
	<b>December</b>	<b>100</b>	<b>46,597</b>	<b>0.2</b>	<b>113</b>	<b>6.4</b>	<b>2,963</b>	<b>11.0</b>	<b>5,139</b>	<b>34.7</b>	<b>16,161</b>	<b>2.8</b>	<b>1,285</b>
North of West Bank	October	100	962	0.0	0	0.0	0	0.3	3	15.5	149	1.9	18
	November	100	1,664	0.2	3	0.1	1	0.0	0	12.1	203	0.0	0
	December	100	1,296	0.0	0	0.1	1	0.0	0	5.9	77	0.0	0
Middle of West Bank	October	100	14,695	8.0	1,181	0.1	14	18.1	2,660	13.8	2,008	12.4	1,822
	November	100	9,895	2.6	258	0.1	6	10.8	1,073	15.6	1,542	6.6	657
	December	100	3,213	0.3	11	0.1	2	0.0	0	10.4	332	1.9	61
Jerusalem	October	100	22,630	0.1	25	3.6	813	16.4	3,718	43.2	9,757	3.4	777
	November	100	25,568	0.6	147	1.9	480	20.1	5,128	35.1	9,006	2.5	639
	December	100	28,352	0.3	94	1.4	402	12.9	3,665	40.3	11,409	3.3	943
South of West Bank	October	100	24,483	0.4	102	0.2	41	19.0	4,644	54.4	13,344	0.6	136
	November	100	23,999	0.0	0	4.1	976	24.4	5,852	37.8	9,076	3.3	799
	December	100	13,609	0.1	8	18.8	2,558	10.8	1,474	31.3	4,266	2.1	281
Gaza Strip	October	100	102	0.0	0	0.0	0	0.0	0	0.0	0	42.3	43
	November	100	76	0.0	0	0.0	0	0.0	0	21.3	16	0.0	0
	December	100	127	0.0	0	0.0	0	0.0	0	60.6	77	0.0	0

2010

:6

**Table 6: Number and Percentage of Guest Nights by Nationality and Region During the Fourth Quarter, 2010**

Region	Month	Nationality										No. of Hotels
		U.S.A & Canada		Asia		Israel		Arab Countries		Palestine		
		%	Number	%	Number	%	Number	%	Number	%	Number	
<b>Palestinian Territory</b>		<b>12.0</b>	<b>44,545</b>	<b>10.7</b>	<b>39,800</b>	<b>6.2</b>	<b>22,935</b>	<b>0.6</b>	<b>2,162</b>	<b>9.0</b>	<b>33,274</b>	
<b>All Region</b>	<b>October</b>	<b>10.3</b>	<b>14,388</b>	<b>9.9</b>	<b>13,847</b>	<b>3.5</b>	<b>4,915</b>	<b>0.4</b>	<b>553</b>	<b>9.1</b>	<b>12,772</b>	<b>97</b>
	<b>November</b>	<b>10.6</b>	<b>14,268</b>	<b>11.6</b>	<b>15,576</b>	<b>7.7</b>	<b>10,372</b>	<b>0.8</b>	<b>1,095</b>	<b>9.0</b>	<b>12,166</b>	<b>98</b>
	<b>December</b>	<b>16.5</b>	<b>15,889</b>	<b>10.8</b>	<b>10,377</b>	<b>8.0</b>	<b>7,648</b>	<b>0.5</b>	<b>514</b>	<b>8.7</b>	<b>8,336</b>	<b>94</b>
North of West Bank	October	5.8	87	1.2	18	27.3	411	1.7	25	43.4	652	7
	November	2.6	61	0.0	0	50.6	1,172	4.0	92	26.9	624	7
	December	3.3	65	1.2	23	54.4	1,069	2.1	41	28.9	569	7
Middle of West Bank	October	16.0	4,094	10.9	2,778	5.3	1,359	1.8	463	23.0	5,878	25
	November	13.7	2,661	9.9	1,936	16.0	3,123	2.9	571	27.8	5,407	27
	December	9.9	926	6.5	606	10.8	1,004	4.8	451	49.6	4,633	25
Jerusalem	October	18.6	8,713	10.9	5,112	5.1	2,406	0.0	0	0.0	0	30
	November	20.4	10,460	9.6	4,940	8.7	4,459	0.7	378	0.0	0	30
	December	25.2	13,800	10.7	5,846	5.2	2,878	0.0	0	0.0	0	29
South of West Bank	October	2.3	1,494	9.0	5,939	1.1	739	0.1	53	9.3	6,110	25
	November	1.7	1,033	14.1	8,700	2.6	1,618	0.1	47	9.8	6,045	25
	December	3.7	1,098	13.1	3,902	9.1	2,697	0.0	1	10.3	3,056	25
Gaza Strip	October	0.0	0	0.0	0	0.0	0	4.1	12	44.9	132	10
	November	29.1	53	0.0	0	0.0	0	3.6	7	49.1	90	9
	December	0.0	0	0.0	0	0.0	0	12.0	21	44.0	78	8



2010

:( ) 6

Table 6 (Cont.): Number and Percentage of Guest Nights by Nationality and Region During the Fourth Quarter, 2010

Region	Month	Total		Nationality										الشهر
				& Australia NewZeland		Africa		Other European Countries		European Union		Central & South America		
				%	Number	%	Number	%	Number	%	Number	%	Number	
<b>Palestinian Territory</b>		<b>100</b>	<b>370,966</b>	<b>0.7</b>	<b>2,651</b>	<b>2.4</b>	<b>8,882</b>	<b>15.5</b>	<b>57,680</b>	<b>39.7</b>	<b>147,206</b>	<b>3.2</b>	<b>11,830</b>	
<b>All Regions</b>	<b>October</b>	<b>100</b>	<b>140,108</b>	<b>1.1</b>	<b>1,575</b>	<b>1.2</b>	<b>1,626</b>	<b>16.2</b>	<b>22,657</b>	<b>45.3</b>	<b>63,629</b>	<b>3.0</b>	<b>4,146</b>	
	<b>November</b>	<b>100</b>	<b>134,811</b>	<b>0.6</b>	<b>775</b>	<b>2.3</b>	<b>3,092</b>	<b>19.0</b>	<b>25,549</b>	<b>35.1</b>	<b>47,467</b>	<b>3.3</b>	<b>4,451</b>	
	<b>December</b>	<b>100</b>	<b>96,047</b>	<b>0.3</b>	<b>301</b>	<b>4.3</b>	<b>4,164</b>	<b>9.9</b>	<b>9,474</b>	<b>37.6</b>	<b>36,110</b>	<b>3.4</b>	<b>3,233</b>	
North of West Bank	October	100	1,504	0.0	0	0.0	0	0.2	3	18.1	274	2.3	34	
	November	100	2,316	0.1	3	0.0	1	0.0	0	15.8	363	0.0	0	
	December	100	1,966	0.0	0	0.1	1	0.0	0	9.7	192	0.3	6	
Middle of West Bank	October	100	25,546	5.1	1,313	0.2	43	12.4	3,165	17.3	4,403	8.0	2,050	
	November	100	19,475	2.0	389	0.1	15	7.1	1,387	16.7	3,253	3.8	733	
	December	100	9,339	1.2	113	0.1	13	0.0	0	15.4	1,431	1.7	162	
Jerusalem	October	100	46,930	0.1	56	3.2	1,502	16.2	7,626	42.8	20,058	3.1	1,457	
	November	100	51,350	0.7	383	2.2	1,118	19.5	10,003	35.7	18,340	2.5	1,269	
	December	100	54,838	0.3	175	1.5	845	12.4	6,826	41.4	22,645	3.3	1,823	
South of West Bank	October	100	65,834	0.3	206	0.1	81	18.0	11,863	59.1	38,894	0.7	455	
	November	100	61,487	0.0	0	3.2	1,958	23.0	14,159	41.5	25,478	4.0	2,449	
	December	100	29,726	0.0	13	11.1	3,305	8.9	2,648	39.6	11,764	4.2	1,242	
Gaza Strip	October	100	294	0.0	0	0.0	0	0.0	0	0.0	0	51.0	150	
	November	100	183	0.0	0	0.0	0	0.0	0	18.2	33	0.0	0	
	December	100	178	0.0	0	0.0	0	0.0	0	44.0	78	0.0	0	

2010

( / )

:7

**Table 7: Average Length of Stay for the Guests in Hotels (Nights/Guest) by Region and Nationality During the Fourth Quarter, 2010**

Region	Month	Nationality					No. of Hotels		
		U.S.A & Canada	Asia	Israel	Arab Countries	Palestine			
<b>Palestinian Territory</b>		<b>2.1</b>	<b>2.3</b>	<b>1.7</b>	<b>5.2</b>	<b>2.2</b>			
<b>All Regions</b>	<b>October</b>	<b>2.1</b>	<b>2.3</b>	<b>1.8</b>	<b>4.4</b>	<b>2.2</b>	<b>97</b>		
	<b>November</b>	<b>2.1</b>	<b>2.4</b>	<b>1.7</b>	<b>5.5</b>	<b>2.2</b>	<b>98</b>		
	<b>December</b>	<b>2.1</b>	<b>2.3</b>	<b>1.6</b>	<b>5.8</b>	<b>2.2</b>	<b>94</b>		
North of West Bank	October	2.4	3.6	1.1	3.1	1.8	7		
	November	1.3	0.0	1.2	4.6	1.7	7		
	December	3.0	3.3	1.2	2.7	1.8	7		
Middle of West Bank	October	2.0	1.9	1.6	5.2	2.3	25		
	November	2.2	2.5	1.9	6.1	2.0	27		
	December	8.2	15.5	1.5	9.2	2.4	25		
Jerusalem	October	2.1	2.2	2.2	0.0	0.0	30		
	November	2.0	2.4	1.6	5.0	0.0	30		
	December	1.9	2.0	1.6	0.0	0.0	29		
South of West Bank	October	2.5	2.7	1.6	2.7	2.1	25		
	November	2.7	2.4	2.0	5.9	2.5	25		
	December	3.1	2.5	1.7	1.0	2.0	25		
Gaza Strip	October	0.0	0.0	0.0	1.5	2.6	10		
	November	2.0	0.0	0.0	2.1	2.9	9		
	December	0.0	0.0	0.0	0.9	2.9	8		

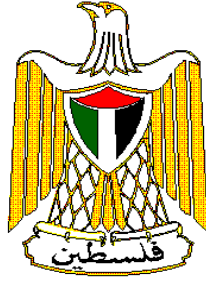
2010

( / )

:( ) 7

**Table 7 (Cont.): Average Length of Stay for the Guests in Hotels (Nights/Guest) by Region and Nationality During the Fourth Quarter, 2010**

Region	Month	Total	Nationality						
			Australia & New Zeland	Africa	Other European Count.	European Union	Central & South America		
<b>Palestinian Territory</b>		<b>2.2</b>	<b>1.4</b>	<b>1.7</b>	<b>2.0</b>	<b>2.4</b>	<b>1.9</b>		
<b>All Regions</b>	<b>October</b>	<b>2.2</b>	<b>1.2</b>	<b>1.9</b>	<b>2.1</b>	<b>2.5</b>	<b>1.5</b>		
	<b>November</b>	<b>2.2</b>	<b>1.9</b>	<b>2.1</b>	<b>2.1</b>	<b>2.4</b>	<b>2.1</b>		
	<b>December</b>	<b>2.1</b>	<b>2.7</b>	<b>1.4</b>	<b>1.8</b>	<b>2.2</b>	<b>2.5</b>		
North of West Bank	October	1.6	0.0	0.0	1.0	1.8	1.9		
	November	1.4	1.0	1.0	0.0	1.8	0.0		
	December	1.5	0.0	1.0	0.0	2.5	0.0		
Middle of West Bank	October	1.7	1.1	3.1	1.2	2.2	1.1		
	November	2.0	1.5	2.5	1.3	2.1	1.1		
	December	2.9	10.3	6.5	0.0	4.3	2.7		
Jerusalem	October	2.1	2.2	1.8	2.1	2.1	1.9		
	November	2.0	2.6	2.3	2.0	2.0	2.0		
	December	1.9	1.9	2.1	1.9	2.0	1.9		
South of West Bank	October	2.7	2.0	2.0	2.6	2.9	3.3		
	November	2.6	0.0	2.0	2.4	2.8	3.1		
	December	2.2	1.6	1.3	1.8	2.8	4.4		
Gaza Strip	October	2.9	0.0	0.0	0.0	0.0	3.5		
	November	2.4	0.0	0.0	0.0	2.0	0.0		
	December	1.4	0.0	0.0	0.0	1.0	0.0		



**Palestinian National Authority  
Palestinian Central Bureau of Statistics**

**Hotel Activities in the Palestinian Territory  
(Fourth Quarter, 2010)  
Executive Summary**

**February, 2011**

PAGE NUMBERS OF ENGLISH TEXT ARE PRINTED IN SQUARE BRACKETS.  
TABLES ARE PRINTED IN THE ARABIC ORDER (FROM RIGHT TO LEFT)

**This document is prepared in accordance with the standard procedures stated in the Code of Practice for Palestine Official Statistics 2006**

© February, 2011  
All rights reserved.

**Suggested Citation:**

**Palestinian Central Bureau of Statistics, 2011.** *Hotel Activities in the Palestinian Territory, (Fourth Quarter 2010) Executive Summary.* Ramallah - Palestine.

All correspondence should be directed to:

**Palestinian Central Bureau of Statistics  
P.O.Box 1647, Ramallah, Palestine.**

Tel: (972/970) 2 298 2700

Fax: (972/970) 2 298 2710

Toll free.: 1800300300

E-Mail :diwan@pcbs.gov.ps

Web-Site: <http://www.pcbs.gov.ps>

## **Acknowledgments**

**The Palestinian Central Bureau of Statistics (PCBS) extends its deep appreciations to all owners and managers of the hotels in the Palestinian Territory who contributed to the success of collecting the survey data and to all workers in the survey for being well dedicated in performing their duties.**

**The survey of Hotel Activities in the Palestinian Territory: Fourth Quarter 2010 has been planned and conducted by a technical team from PCBS and with joint funding by the Palestinian National Authority (PNA) and the Core Funding Group (CFG) for the year 2010 represented by the Representative Office of Norway to PNA and the Swiss Development and Cooperation Agency (SDC).**

**Moreover, PCBS very much appreciates the distinctive efforts of the Core Funding Group (CFG) for their valuable contribution to funding the project.**

## **Project Team**

- **Report Preparation**

Fathi Farasin  
Bihan Bader

- **Dissemination Standard**

Hanan Janajreh

- **Preliminary Review**

Mahmoud Abd alrahman

- **Final Review**

Inaya Zidan  
Mahmoud AL- Qayya

- **Overall Supervision**

Ola Awad

PCBS President

## **Preface**

The Palestinian tourism sector has great potential and is expected to occupy a large share of the Palestinian GDP once the tourist resources are well exploited. Tourism activities are, however, crippled by a multiplicity of internal and external factors that prevent this important economic activity to flourish.

PCBS has implemented several surveys to cover the supply and demand sides of tourism, including the Hotel Activity survey in the Palestinian Territory (a continuous and permanent survey since 1996), a survey of Tourism Activities (2002, 2007 and 2009) as well as the Domestic Tourism survey (1998, 2005, 2006, 2008 and 2009). In addition, PCBS has implemented additional related surveys including the survey of Outbound Tourism in 2004, a survey of Inbound Tourism in 2005, a survey of Inbound Visitors in 2009 and a survey of Hotel Guests in 2008, 2009. These statistical activities cover an important aspect of tourist-related statistics and are important to build the necessary database to establish the Tourism Satellite Accounts (TSA) in the Palestinian Territory.

This report addresses the main indicators of the hotel industry. These indicators include the number of operating hotels, number of rooms and beds, public facilities in the surveyed hotels, number of employed persons in hotels, number of guest nights in the reference period, number of guests by nationality and rates of bed and room occupancy.

PCBS is pleased to present the bulletin on “Hotel Activities in the Palestinian Territory” for the fourth quarter of the year 2010 as an important statistical reference on hotel activities. PCBS hopes that this bulletin will pave the way for developing a comprehensive tourist program according to international standards

**February, 2011**

**Ola Awad  
President of PCBS**



## Table of Contents

<b>Subject</b>	<b>Page</b>
List of Tables and Figures	
Executive Summary	
Chapter One: <b>Introduction</b>	<b>[15]</b>
Chapter Two: <b>Concepts and Definitions</b>	<b>[17]</b>
Chapter Three: <b>Main Findings</b>	<b>[19]</b>
3.1 Hotels Capacity during December, 2010	[19]
3.2 Room Occupancy during the Fourth Quarter, 2010	[19]
3.3 Hotel Workers during the Fourth Quarter, 2010	[19]
3.4 Guests and Nights' Occupancy during the Fourth Quarter, 2010	[19]
<b>Tables</b>	<b>23</b>



## **List of Tables and Figures**

<b>Table</b>	<b>Page</b>
<b>Table 1:</b> Main Indicators for Hotel Activities by Month and Region During the Fourth Quarter, 2010	<b>25</b>
<b>Table 2:</b> Number of Hotels and Rooms by Facilities and Region as in December, 2010	<b>26</b>
<b>Table 3:</b> Number of Hotels by Availability of Public Services and Region as in December, 2010	<b>26</b>
<b>Table 4:</b> Average Number of Workers in Hotels by Type of Work, Sex and Region During the Fourth Quarter, 2010	<b>27</b>
<b>Table 5:</b> Number and Percentage of Guests by Nationality and Region During the Fourth Quarter, 2010	<b>28</b>
<b>Table 6:</b> Number and Percentage of Guest Nights by Nationality and Region During the Fourth Quarter, 2010	<b>30</b>
<b>Table 7:</b> Average Length of Stay for the Guests in Hotels (Night/Guest) by Nationality and Region During the Fourth Quarter, 2010	<b>32</b>
 <b>Figures</b>	
<b>Figure 1:</b> Percentage Distribution of Guests by Nationality During the Fourth Quarter, 2010.	<b>[19]</b>

## **Executive Summary**

The main findings of the Hotel Activities Survey during the fourth quarter of 2010 are as follows:

- There were 94 operating hotels in December 2010, offering 4,719 rooms with 10,169 total available beds.
- The average occupancy of rooms reached 2,020 in the Palestinian hotels.
- The percentage of rooms occupancy was 41.3% and it increased by 17.3% compared with the previous quarter.
- The average number of workers in the hotels was 1,778 of whom 262 were females.
- The total number of guests in the Palestinian hotels was 170,671 persons of whom 8.9% were Palestinian guests and 36.0% were from the European Union countries.
- The number of guests showed an increase of 23.9% compared with the previous quarter.
- The total number of guest nights was 370,966. The number reflects an increase by 21.8% during the fourth quarter 2010 compared with the previous quarter, and 19.0% compared with the corresponding quarter in the year 2009.
- About 44.9% of total guests stayed in hotel in Jerusalem, whereas 36.4% stayed in hotels in the south of the West Bank.
- The average length of stay in Palestinian hotels was 2.2 nights per guest during the fourth quarter 2010.

## Chapter One

### **Introduction**

Tourism is considered a cornerstone of the Palestinian economy and there are many attractive tourist resorts for people of different interests. PCBS has started the collection of statistical data on tourism through a continuous and comprehensive monthly survey since 1996 in accordance with the recommendations of the World Tourism Organization and European Union. The survey aims to provide a comprehensive database and time series of basic indicators on the hotel industry to enable the development and promotion of the tourism industry in the Palestinian Territory.

A quarterly report on hotel activities is regularly produced in addition to annual consolidated report. This statistical bulletin presents data on hotels for the fourth quarter 2010; and results indicate an improvement in most indicators compared with the corresponding quarter since 2001.



## Chapter Two

### Concepts and Definitions

This section presents the main concepts and definitions used to derive the main indicators of tourism statistics. These concepts and definitions are based on international recommendations in the field of tourism statistics, and are applied to the rest of the common subjects in the PCBS. The main concepts and definitions mentioned in this report were as follows:

#### **Hotel:**

It is defined as an accommodation establishment providing overnight lodging for the visitors in a room or unit. It should hold a number of persons exceeding that of an average single family. The establishment must be under one management, and provides various facilities and services to visitors.

#### **Operating Hotels:**

It is defined as the hotels that included in the sample frame and results, excluding the non operating hotels that are carrying out repairs or maintenance, and the hotels which didn't respond to the survey.

#### **Number of Rooms:**

It refers to the furnished rooms for the use of guests. Such rooms might be single, double, triple, or quadruple. Rooms involving more than four beds were classified under (others) in the questionnaire. As for the suite, it is usually comprised of one bedroom or more, a living room and private toilet facilities.

#### **Available Beds and Rooms:**

It refers to beds and rooms which are ready for use during the reference period. Rooms closed for maintenance or repairs are excluded.

#### **Guests:**

It refers to visitors staying in the hotels and using their facilities. Records of new guests are based on the number of visits regardless whether it's the same person or different.

#### **Number of Guest Nights (Bed Occupancy):**

Number of beds booked for hotel guests. Such beds are considered as occupied whether they were actually used or not. It is measured by guest night unit.

#### **Room Occupancy:**

Number of booked and paid rooms. Such rooms are considered occupied whether they were actually used or not.

#### **Average (rooms, beds) Occupancy:**

It is defined as the total number of occupied (rooms, beds) divided by the number of days.

#### **Percentage of (rooms, beds) Occupancy:**

It is defined as the average of (rooms, beds) occupancy divided by available (rooms, beds) multiplied by one hundred.

**Average Length of Stay:**

Represents the total of guest nights by nationality divided by number of guests of the same nationality.

**North of West Bank Region:**

Jenin, Tulkarm, Nablus, Qalqiliya, Salfit and Tubas governorates.

**Middle of West Bank Region:**

Ramallah and Al-Bireh, Jericho and Al-Aghwar governorates.

**Jerusalem Region:**

Jerusalem governorate.

**South of West Bank Region:**

Bethlehem and Hebron governorates.

**Gaza Strip:**

North Gaza, Gaza, Deir Al-Balah, Khan Yunis and Rafah governorates.



## Chapter Three

### Main Findings

The main findings of the Hotel Activities Survey during the fourth quarter of 2010 show that there were 94 operating hotels in December 2010 offering 4,719 rooms with 10,169 total available beds.

#### 3.1 Hotel Capacity during December, 2010

The operating hotels within the Palestinian Territory in December 2010 were distributed as follows:

- North of West Bank: 7 hotels including 166 rooms comprising 364 beds.
- Middle of West Bank: 25 hotels including 935 rooms comprising 2,174 beds.
- Jerusalem governorate: 29 hotels including 1,452 rooms comprising 3,165 beds.
- South of West Bank: 25 hotels including 1,873 rooms comprising 4,007 beds.
- Gaza Strip: 8 hotels including 293 rooms comprising 459 beds.

#### 3.2 Room Occupancy during the Fourth Quarter, 2010

The average occupancy of rooms in the Palestinian hotels was 2,019.7 representing 41.3% from the available rooms.

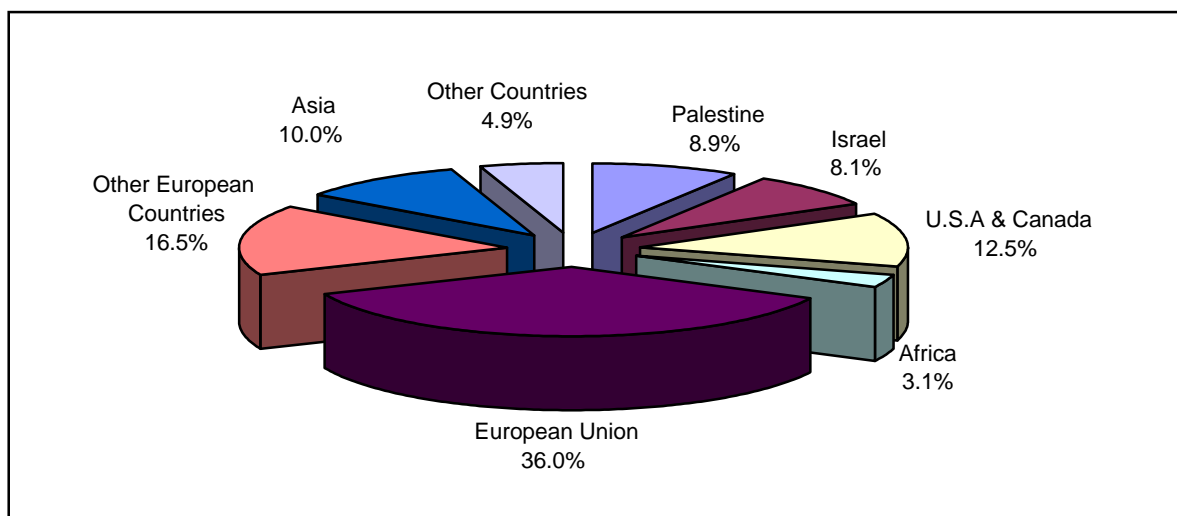
#### 3.3 Hotel Workers during the Fourth Quarter, 2010

The average number of workers in the hotels was 1,778 of whom 1,516 were males and 262 were females. The number of workers in the administration hotels was 328 of whom 258 were males and 70 were females. There were 1,450 workers in hotel services of whom 1,258 were males and 192 were females.

#### 3.4 Guests and Nights Occupancy during the Fourth Quarter, 2010

The total number of guests in the Palestinian hotels was 170,671 persons of whom 8.9% were Palestinian guests, and 36.0 % were from the European Union countries. The number of guests showed an increase by 19.8% compared with the same quarter of the year 2009.

**Figure (1): Percentage Distribution of Guests by Nationality During the Fourth Quarter, 2010**



The total number of guest nights in Palestinian hotels during the fourth quarter 2010 was 370,966 of which 9.0% of these nights were occupied by Palestinian guests, 39.7% by guests from European Union countries and 12.0% by guests from the United States and Canada.

The guest nights are distributed according by region as follows: guests spent 41.3% of total nights in Jerusalem hotels, and 14.7%, 42.3%, and 1.5% in Middle, South, and North of the West Bank respectively compared with 0.2% of nights in Gaza Strip hotels.

The tables below show the changes that occurred in the main indicators for Palestinian hotels activities in the fourth quarter-2010 compared with the previous quarter and with the results of the fourth quarter of 2009.

**Percentage Change in the Variables During the Fourth Quarter 2010, Compared with the Third and Fourth Quarter 2009**

The Indicator	Value During the 4 <sup>th</sup> Quarter 2010	Percentage change (%) comparing with	
		3 <sup>rd</sup> Quarter 2010	4 <sup>th</sup> Quarter 2009
Number of operating hotels	94	0.0	-3.1
Average number of workers	1,778	-0.3	7.9
Number of guests	170,671	23.9	19.8
Number of guest nights	370,966	21.8	19.0
Average occupancy of rooms	2,019.7	18.8	12.8
Average occupancy of beds	4,032.2	21.8	19.0
Rooms occupancy %	41.3	17.3	12.5
Beds occupancy %	38.4	19.5	22.2