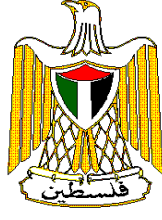




**2010**

**2011 /**



**2010**

**2011 /**

**2006**

.2011 - 1432 ©

*.2010* : **.2011**

**1647** : .  
(970/972) 2 298 2700 :  
(970/972) 2 298 2710 :  
1800300300 :  
diwan@pcbs.gov.ps :  
<http://www.pcbs.gov.ps> :



2010

(PNA)

2010 (CFG)

.(SDC)

(CFG)

•

•

•

•

•

•

•

J1

J1

-1

J1

.J1

(..)

-2

-3

: 2010 – 2000

2010	2009	2008	2007	2006	2005	2004	2003	2002	2001	2000	
3.72	3.90	3.76	4.22	4.61	4.37	4.41	4.83	4.52	4.11	4.11	
3.75	4.11	3.60	4.21	4.69	4.37	4.46	4.86	4.64	4.12	4.05	
3.74	4.16	3.53	4.20	4.69	4.33	4.50	4.79	4.66	4.17	4.01	
3.69	4.19	3.53	4.10	4.59	4.37	4.54	4.64	4.83	4.18	4.04	
3.79	4.07	3.40	4.00	4.47	4.37	4.59	4.49	4.89	4.14	4.14	
3.85	3.93	3.34	4.17	4.46	4.47	4.52	4.40	4.95	4.17	4.10	
3.86	3.90	3.47	4.26	4.42	4.55	4.49	4.37	4.71	4.20	4.09	
3.79	3.83	3.55	4.23	4.38	4.50	4.53	4.45	4.67	4.23	4.05	
3.73	3.77	3.53	4.10	4.35	4.53	4.49	4.47	4.74	4.32	4.04	
3.61	3.72	3.67	4.01	4.27	4.65	4.46	4.44	4.79	4.34	4.09	
3.64	3.77	3.88	3.93	4.29	4.70	4.40	4.49	4.69	4.24	4.11	
3.61	3.79	3.83	3.89	4.21	4.62	4.34	4.39	4.71	4.29	4.09	
<b>3.73</b>	<b>3.93</b>	<b>3.60</b>	<b>4.15</b>	<b>4.45</b>	<b>4.50</b>	<b>4.48</b>	<b>4.55</b>	<b>4.73</b>	<b>4.21</b>	<b>4.08</b>	

1997

2009

2008

J1

2010

**2011**



**:J1**

1967

**:COICOP**

**:ISIC-3**

( )

<b>23</b>			:
23			1.1
23			2.1
24			3.1
24			4.1
25			5.1
25			6.1
<b>27</b>			:
<b>29</b>			:
29		2010	1.3
30		2010	2.3
31		2010	3.3
32	2010		4.3
32	2010		5.3
<b>35</b>			:
35			1.4
35			2.4
35			3.4
36			4.4
36		( )	5.4
<b>39</b>			:
39			1.5
42			2.5
42			3.5
<b>45</b>			

<b>47</b>	2010 – 1996	<b>:1</b>
<b>48</b>	2010 – 1996	<b>:2</b>
<b>49</b>	2010 – 1996	<b>:3</b>
<b>50</b>	2010 – 1996 J1	<b>:4</b>
<b>51</b>	2010 - 2004	<b>:5</b>
<b>52</b>	2010 - 2004	<b>:6</b>
<b>53</b>	2010 - 2004	<b>:7</b>
<b>54</b>	J1 2010 - 2004	<b>:8</b>
<b>55</b>	2010	<b>:9</b>
<b>70</b>	2010 2009	<b>:10</b>
<b>71</b>	2010 2009	<b>:11</b>
<b>72</b>	2009 2010	<b>:12</b>
<b>73</b>	2010 2009	<b>:13</b>
<b>74</b>	2010 - 2008	<b>:14</b>
<b>78</b>	2010 - 2008	<b>:15</b>
<b>82</b>	2010 2009	<b>:16</b>
<b>83</b>	2010 2009	<b>:17</b>

<b>30</b>	2010 - 2004	<b>:1</b>
<b>31</b>		<b>:2</b>
	2010 - 2004	
<b>31</b>		<b>:3</b>
	2010 - 2004	
<b>32</b>	2010	<b>:4</b>
<b>33</b>	2010	<b>:5</b>

:(2009 2010 )

: 2009 2010 .1

.%3.75 •

.%4.24 •

.%5.25 J1 •

.%1.72 •

: 2009 2010 .2

.%3.36 •

.%3.60 •

.%1.95 •

: 2009 2010 .3

.%3.70 •

.%4.91 •

.%2.92 •

2009 2010 .4

.%1.56 •

.%1.54 •

.%1.56 •

2009 2010 .5

.%3.75 •

.%4.79 •

.%3.67 •

.%3.50 •

.%3.66 •

.%3.73 •

2010

**1.1**

-

-

-

.J1

-

-

-

**2.1**

3,340

( ISIC-3)

COICOP

(SNA93) 1993

1,975

993

268

649

202

528

1,256

569

			1996
		J1	
		1996	2004
2007	1996		
	2007		
			2008
			<b>3.1</b>
3,340		3,100	
			<b>4.1</b>
			<b>1.4.1</b>
		:	(COICOP)
			.1
			.2
			.3
			.4
			.5
			.6
			.7
			.8
			.9
			.10
			.11
			.12
			<b>2.4.1</b>
		:	(ISIC - 3)

- -  
- -

**3.4.1**

:

-  
-  
-

**4.4.1**

:

-  
-  
-  
-  
-  
-

**5.1**

(1) :

(2) .

(1)

(3) .

(2)

(4) .

(5) .

**6.1**

:

:

•



.(COICOP)

J1

(ISIC-3)

•  
•  
•  
•  
•  
•

$$100 * (1 - \frac{P_t}{P_{t-1}}) =$$

$P_t$   
 $P_{t-1}$

(SNA 93)

( )

:

:

:

:

:

:

**2010** **1.3**

(100=2004 ) 2010

%3.75

2008 %2.75 2009 .2009

%3.40 2010

%6.00 %5.12 %12.13

%2.64 %3.92

**2010**

(100=2004 ) 2010

%4.24

%8.18 %16.14 %4.74

%3.31 %5.54

%2.34 %3.40

**2010 J1**

(100=2004 ) 2010 J1

%5.25

%5.78

%7.49 %18.08

%4.52 %5.56

%3.39 %3.20

.%5.41

**2010**

(100=2004 ) 2010

%1.72 2010

%6.81 %4.05

%1.60

%4.79 %4.79

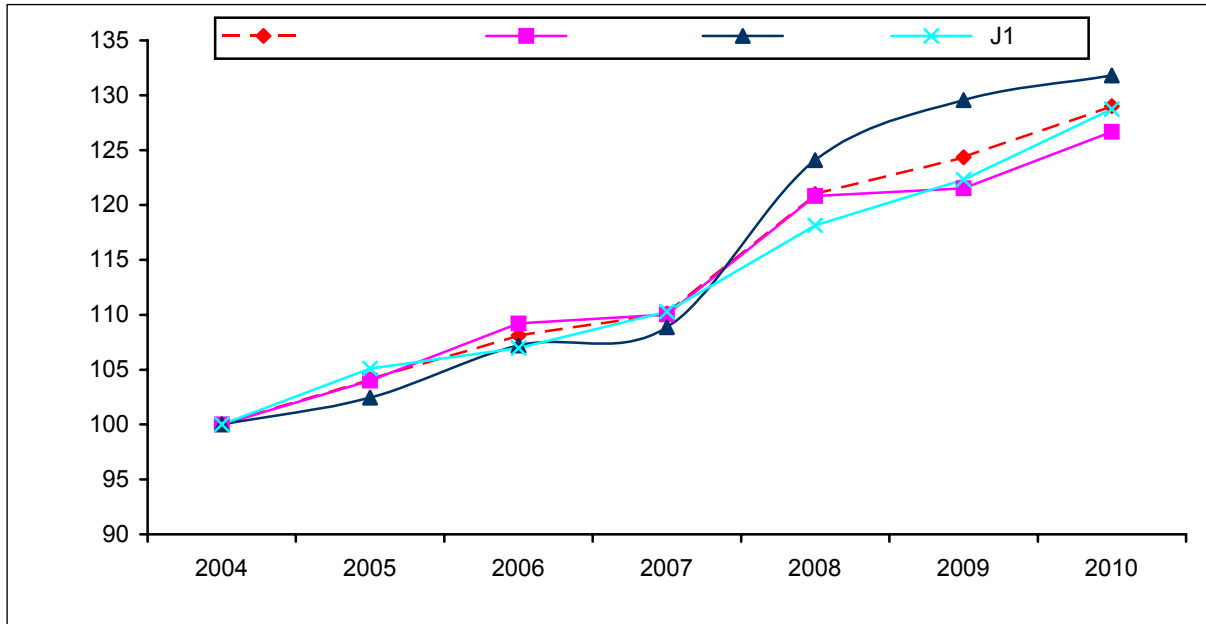
%4.62

%4.75

2010-2004

:1

(100 = 2004)



2010

2.3

(100=2007

) 2010

%1.53

2009

%3.36

2009

2010

%1.95

%3.60

%5.96

%2.12

%1.20

.2009

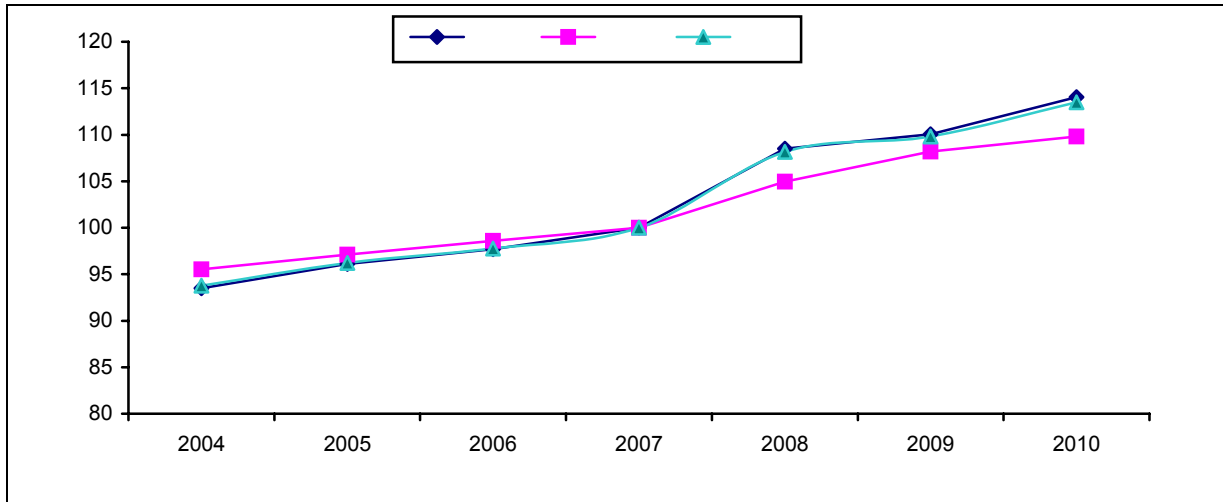
2010

%0.11

2010 - 2004

:2

(100 = 2007)



2010

3.3

(100=2007

) 2010

%0.65

2009

%3.70

%4.91

%2.92

%3.10

%0.17

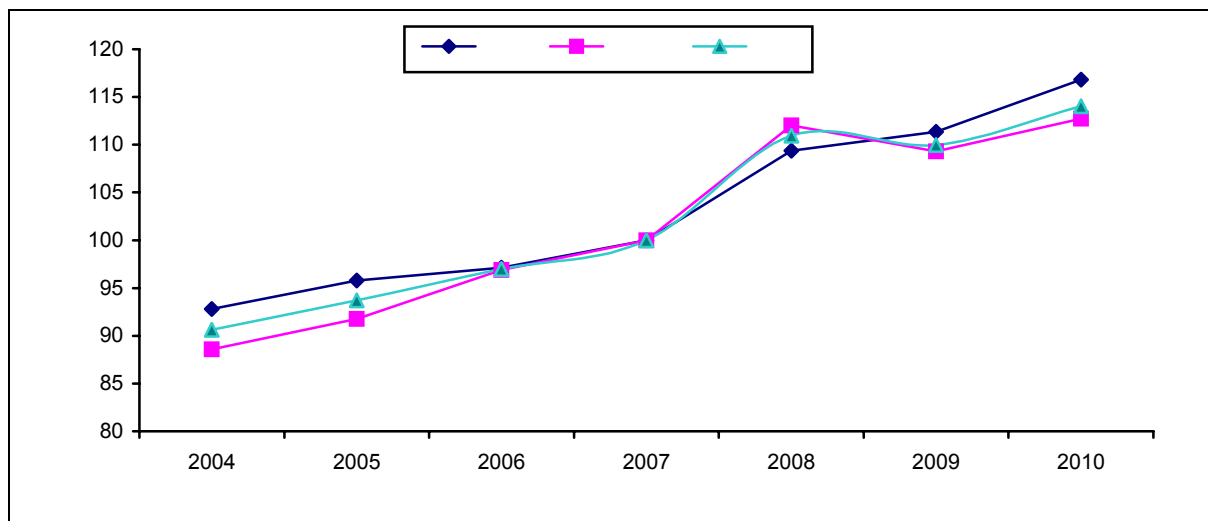
%5.31

%.0.70

2010 - 2004

:3

(100 = 2007)



2010

4.3

%1.56 2010

(100 = 2007 )

2009

%1.56

%1.54

%1.48

%1.89

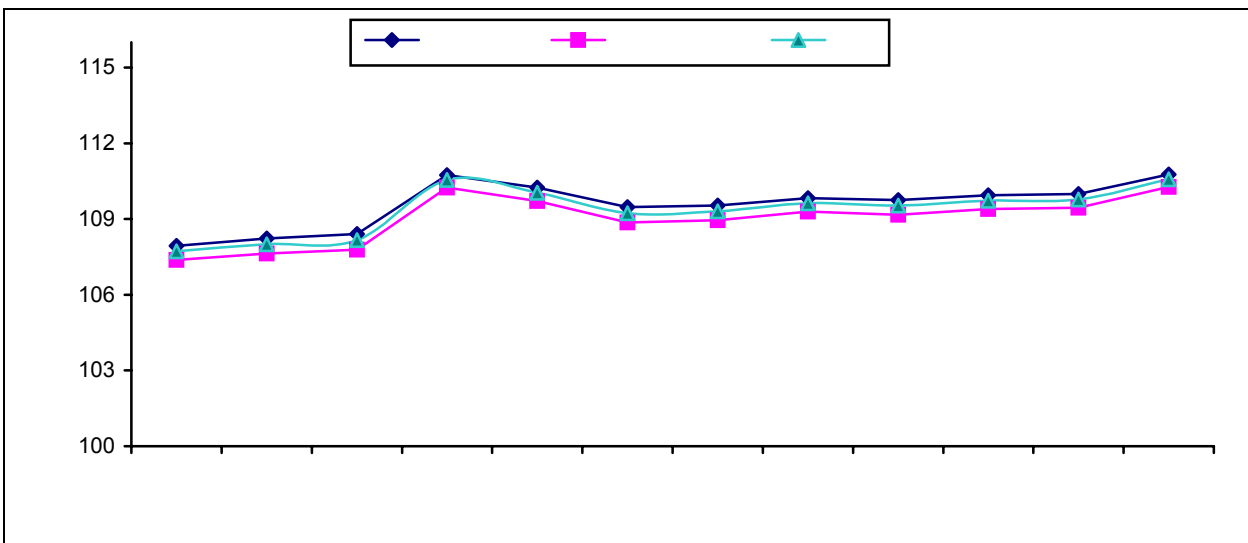
%4.70

.2009

2010

:4

(100= 2007 )



:2010

5.3

2009

%3.75 2010

%4.79

(100 = 2008 )

%3.50

%3.67

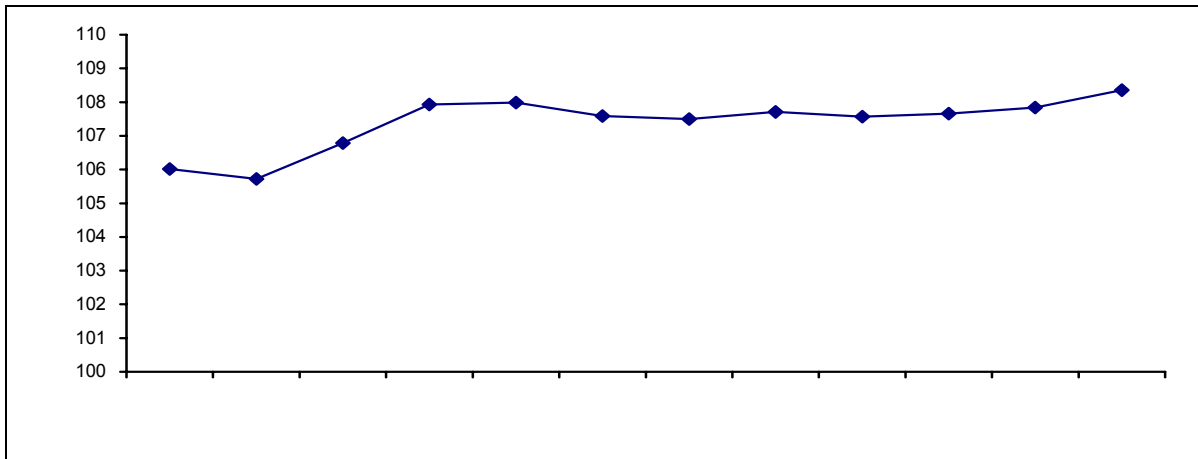
%.3.73

%3.66

2010

:5

(100= 2008 )







**1.4**

( )

:

**2.4**

**3.4**

:

- 
- 
- 

4.4

(Laspeyres Index)

( ) .( )

( ) 5.4

:

( )  
3,781 2004

:2004

J1				
32.88	38.89	38.82	37.64	
4.39	4.27	5.07	4.66	
6.62	7.16	6.96	6.96	
11.94	9.00	10.72	10.38	
6.35	6.41	6.29	6.31	
3.87	3.68	5.26	4.45	
12.38	8.75	9.58	9.86	
4.27	3.41	3.87	3.79	
4.58	6.23	3.91	4.84	
3.64	4.03	3.19	3.56	
2.30	2.14	2.14	2.18	
6.78	6.04	4.19	5.37	
<b>100.00</b>	<b>100.00</b>	<b>100.00</b>	<b>100.00</b>	

:

1996

1996

.2007

:2007

35.06	7.93	39.21	
0.20	0.01	0.23	
1.26	1.61	1.21	
63.48	90.45	59.35	
<b>100.00</b>	<b>100.00</b>	<b>100.00</b>	

:

.1996

.2007

:2007

28.60	12.33	39.53	
0.14	0.01	0.23	
0.94	0.53	1.22	
70.32	87.13	59.02	
<b>100.00</b>	<b>100.00</b>	<b>100.00</b>	

:

2007

2007

:

(	)			
	71.50	70.00	72.00	
	1.00	0.70	1.30	
	27.50	29.30	26.70	
	<b>100.00</b>	<b>100.00</b>	<b>100.00</b>	

:

2008

:

60.63	66.1	63.7	62.7	60.6	36.9	
2.10	2.0	2.0	2.0	2.0	3.0	
17.75	13.5	17.5	13.5	14.0	45.0	
2.10	2.0	2.0	2.0	2.0	3.0	
9.92	11.4	8.8	9.8	11.4	7.1	
7.50	5.0	6.0	10.0	10.0	5.0	
<b>100.00</b>	<b>100.00</b>	<b>100.00</b>	<b>100.00</b>	<b>100.00</b>	<b>100.00</b>	

1.5

1.1.5

.%4.7

2.1.5

•

•

.1

.2

—

.3

:

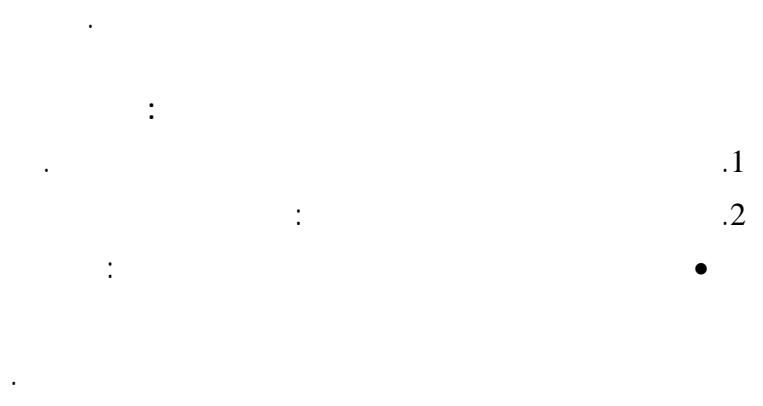
—

—

%10 ( )

%100

—



( )

(Group Relative Method)



$$N_b = \frac{P_b * P_{t-1}}{P_{0-1}}$$

$$\begin{aligned} & \vdots \\ & = N_b \\ & = P_b \\ & = P_{t-1} \\ & = P_{0-1} \end{aligned}$$

$$N_b = \frac{P_b * P_c}{P_{0-1}}$$

$$\begin{aligned} & \vdots \\ & = N_b \\ & = P_b \\ & = P_c \\ & = P_{0-1} \end{aligned}$$





**2010**

	%95				
0.044	13.18	11.11	0.529	12.15	1- - -
0.013	161.55	153.71	1.995	157.63	60 - - -
0.021	3.77	3.47	0.077	3.62	1- -
0.006	49.51	48.28	0.314	48.89	1- -
0.013	15.88	15.08	0.202	15.48	1 - -
0.004	98.43	96.80	0.415	97.61	2.5 - - -
0.018	15.08	14.08	0.257	14.58	2 - -
0.012	34.40	32.85	0.395	33.62	1 - -
0.024	3.99	3.63	0.092	3.81	1- -
0.014	5.86	5.55	0.079	5.71	1- -
0.085	4.29	3.06	0.313	3.67	* 1- -
0.047	2.95	2.45	0.127	2.70	1- -
0.019	3.23	3.01	0.058	3.12	1- -
0.016	4.13	3.87	0.066	4.00	1- - -
0.042	1.77	1.50	0.068	1.63	1- - -
0.032	17.09	15.08	0.512	16.08	- - -
0.014	67.70	64.19	0.894	65.94	12 - -
0.008	5.67	5.50	0.043	5.58	1- -
0.004	6.25	6.15	0.025	6.20	1 - - 96
0.011	133.10	127.27	1.483	130.18	- 21

.2010

2010

\*

# Tables

2010 - 1996

:1

Table 1: Consumer Price Indices in the Palestinian Territory, 1996 - 2010

Year	Month												Annual Average		
	December	November	October	September	August	July	June	May	April	March	February	January			
1996	100.00	100.00	100.00	100.00	100.00	100.00	100.00	100.00	100.00	100.00	100.00	100.00	100.00	100.00	1996
	Base Average 1996 = 100											100 = 1996			
1997	109.91	109.19	108.97	108.96	108.54	107.98	106.77	106.21	107.61	106.25	106.35	104.74	107.62	1997	
1998	120.57	119.60	117.89	114.62	112.39	111.75	111.19	111.28	110.31	110.62	111.46	111.86	113.63	1998	
1999	123.55	121.35	120.81	118.78	118.56	119.17	118.77	118.27	118.33	119.79	120.00	121.76	119.93	1999	
2000	124.25	123.19	122.95	122.86	121.95	123.09	123.30	123.27	122.96	123.79	124.07	123.73	123.28	2000	
2001	126.53	126.04	125.12	125.14	123.77	124.51	124.54	124.44	124.94	124.60	123.97	123.90	124.79	2001	
2002	134.67	133.85	134.61	134.44	133.33	133.16	131.95	130.94	130.91	129.17	128.33	127.64	131.92	2002	
2003	139.78	139.40	138.70	138.60	136.34	136.85	138.09	137.81	138.46	137.88	135.52	135.27	137.73	2003	
2004	145.26	143.23	141.80	141.64	141.21	141.12	141.00	141.14	141.89	141.12	141.70	141.24	141.86	2004	
	Chaining Coefficient: 1.4186 Base: Average 2004 = 100											100 = 2004	1.4186 :		
2005	105.85	106.25	106.03	104.73	103.84	103.58	103.09	103.04	103.72	103.27	103.41	102.47	104.11	2005	
2006	109.22	108.96	108.80	109.05	108.24	108.53	108.41	108.68	107.43	107.12	106.83	106.00	108.11	2006	
2007	114.48	114.09	113.38	111.98	111.37	108.61	108.57	107.44	107.80	107.61	107.94	108.13	110.12	2007	
2008	122.44	123.08	124.12	124.19	122.62	122.12	121.28	120.57	120.46	118.69	116.77	115.78	121.01	2008	
2009	127.75	127.01	126.22	126.28	125.60	124.22	123.48	123.05	122.55	122.82	121.54	121.57	124.34	2009	
2010	131.36	131.50	131.36	130.68	128.89	128.50	127.90	127.60	127.50	127.44	127.48	127.83	129.00	2010	

2010 - 1996

:2

**Table 2: Consumer Price Indices in the West Bank, 1996 - 2010**

Year	Month												Annual Average		
	December	November	October	September	August	July	June	May	April	March	February	January			
1996	100.00	100.00	100.00	100.00	100.00	100.00	100.00	100.00	100.00	100.00	100.00	100.00	100.00	100.00	1996
	Base Average 1996 = 100											100 = 1996			
1997	108.93	108.34	108.74	108.82	108.40	107.64	107.14	107.25	107.39	106.86	106.35	105.12	107.58	1997	
1998	119.50	118.79	117.27	113.15	110.93	110.34	111.22	111.22	109.66	110.21	111.33	111.14	112.90	1998	
1999	124.64	123.19	121.55	119.65	119.56	119.24	118.63	118.40	118.26	119.92	119.43	120.33	120.23	1999	
2000	126.79	124.39	124.26	123.94	122.44	123.23	123.49	122.99	122.94	123.45	125.86	125.14	124.08	2000	
2001	130.23	129.69	128.95	129.10	126.96	126.16	126.04	125.96	126.86	126.44	126.17	125.49	127.34	2001	
2002	137.87	137.27	137.84	137.57	136.36	135.72	134.62	132.82	134.88	132.53	132.00	131.37	135.07	2002	
2003	142.25	142.32	141.61	141.31	139.40	139.45	141.25	140.77	143.14	141.81	139.32	137.95	140.88	2003	
2004	148.46	145.82	144.64	144.51	145.28	143.58	143.63	144.54	146.30	144.45	145.02	143.26	144.96	2004	
	Chaining Coefficient: 1.4496 Base: Average 2004 = 100											100 = 2004	1.4496 :		
2005	106.01	106.47	106.13	104.60	103.37	102.95	102.42	102.80	103.94	103.26	103.16	102.89	104.00	2005	
2006	110.26	110.60	109.96	110.20	108.75	109.62	109.78	109.50	108.62	108.11	107.91	107.33	109.22	2006	
2007	115.01	114.80	113.46	111.18	110.35	108.60	108.13	106.63	107.01	106.72	108.57	110.00	110.04	2007	
2008	120.13	121.95	123.17	123.78	122.15	122.53	121.20	120.45	121.08	119.23	117.75	116.55	120.83	2008	
2009	125.54	124.98	123.71	123.25	122.75	121.43	120.32	119.77	119.16	119.98	118.58	118.82	121.52	2009	
2010	129.58	129.40	129.15	128.68	126.47	125.59	125.18	124.94	125.14	125.11	125.24	125.56	126.67	2010	

2010 - 1996

:3

**Table 3: Consumer Price Indices in Gaza Strip, 1996 - 2010**

Year	Month												Annual Average		
	December	November	October	September	August	July	June	May	April	March	February	January			
1996	100.00	100.00	100.00	100.00	100.00	100.00	100.00	100.00	100.00	100.00	100.00	100.00	100.00	100.00	1996
	Base Average 1996 = 100											100 = 1996			
1997	110.93	110.79	109.99	110.44	110.80	108.73	107.13	106.93	107.76	108.04	108.33	105.65	108.79	1997	
1998	121.30	120.07	119.85	115.79	114.11	113.18	113.31	113.44	113.32	112.39	112.98	112.53	115.19	1998	
1999	122.59	120.33	120.78	118.28	117.25	118.46	118.43	117.00	118.64	121.59	121.42	122.62	119.78	1999	
2000	122.14	122.34	121.81	121.80	121.35	122.29	123.20	124.53	126.42	126.25	124.90	122.93	123.33	2000	
2001	121.33	121.89	120.24	120.25	120.90	121.51	122.25	125.42	122.77	123.46	122.39	122.49	122.08	2001	
2002	124.73	125.93	126.31	126.21	125.80	123.72	123.94	124.44	124.55	124.06	123.21	122.41	124.61	2002	
2003	129.86	129.06	127.80	127.83	126.44	127.01	128.56	128.25	128.42	127.82	125.43	125.87	127.70	2003	
2004	133.06	132.34	131.55	131.53	130.63	130.45	132.37	131.81	131.42	131.69	132.35	131.84	131.75	2004	
	Chaining Coefficient: 1.3175 Base: Average 2004 = 100											100 = 2004	1.3175 :		
2005	103.69	103.93	103.79	103.00	101.99	101.56	101.03	101.82	102.45	101.75	102.46	101.89	102.45	2005	
2006	108.55	107.78	107.90	108.35	108.47	108.45	107.63	108.14	106.56	105.82	105.16	103.56	107.20	2006	
2007	114.86	112.95	112.66	110.44	109.79	105.95	106.47	105.90	106.33	106.50	106.48	108.08	108.87	2007	
2008	126.68	126.56	127.90	128.74	126.49	125.90	125.17	124.39	123.05	120.99	117.27	115.87	124.08	2008	
2009	132.15	131.45	130.26	131.04	130.48	129.00	128.64	128.78	129.09	129.15	127.93	126.87	129.57	2009	
2010	133.55	133.21	133.12	133.30	130.79	130.73	130.88	130.71	131.03	130.64	131.30	132.27	131.79	2010	

2010 - 1996 J1

:4

**Table 4: Consumer Price Indices in Jerusalem J1, 1996 - 2010**

Year	Month												Annual Average		
	December	November	October	September	August	July	June	May	April	March	February	January			
1996	100.00	100.00	100.00	100.00	100.00	100.00	100.00	100.00	100.00	100.00	100.00	100.00	100.00	100.00	1996
	Base Average 1996 = 100											100 = 1996			
1997	110.15	109.36	108.95	108.80	108.18	108.04	106.74	105.96	106.40	105.53	104.98	104.20	107.27	1997	
1998	121.50	120.65	118.00	115.42	113.07	112.75	112.01	112.16	111.09	111.26	111.58	112.32	114.32	1998	
1999	123.97	123.31	121.55	120.51	120.46	120.89	119.61	119.02	118.73	119.62	120.27	122.22	120.85	1999	
2000	123.53	124.46	123.76	124.06	122.76	124.15	123.45	123.93	122.59	123.95	123.40	123.55	123.63	2000	
2001	124.32	123.79	123.43	123.44	122.41	123.75	123.31	123.04	123.58	123.25	123.00	122.51	123.32	2001	
2002	132.64	130.99	131.79	131.56	130.07	130.76	128.37	128.79	127.84	126.47	126.09	125.23	129.22	2002	
2003	139.66	138.35	137.70	138.30	135.10	136.04	135.95	135.95	134.96	135.03	134.25	132.37	136.14	2003	
2004	146.80	144.82	143.16	142.61	141.19	142.06	141.10	141.40	141.50	140.54	140.11	140.57	142.16	2004	
	Chaining Coefficient: 1.4216 Base: Average 2004 = 100									100 = 2004	1.4216 :				
2005	106.99	107.37	107.32	105.83	104.94	105.08	104.60	104.04	104.32	104.40	104.28	102.09	105.10	2005	
2006	107.65	107.26	107.36	107.74	107.13	107.12	106.98	107.48	106.18	106.26	106.47	105.96	106.96	2006	
2007	113.01	113.28	112.82	112.69	112.51	110.53	110.04	108.57	108.61	107.96	106.89	106.48	110.28	2007	
2008	120.33	120.61	121.16	120.52	119.56	118.67	117.96	117.33	116.89	115.24	114.91	114.42	118.13	2008	
2009	126.47	125.24	124.96	124.53	123.75	122.33	121.90	121.50	119.79	119.76	118.66	118.92	122.32	2009	
2010	131.60	131.91	131.63	130.55	129.18	129.04	127.84	127.05	126.69	126.56	126.17	126.69	128.74	2010	

2010 - 2004

:5

Table 5: Consumer Price Indices and Percentage Changes in the Palestinian Territory by Major Groups of Expenditure, 2004 - 2010

Base Year (2004 = 100)

Period	Major Groups of Expenditure												% Change	All Items Index	
	Miscellaneous goods and services	Restaurants and cafes	Education	Recreational, cultural goods & services	Communications	Transportation	Medical care	Furniture, household goods	Housing	Textiles, clothing and footwear	Alcoholic Beverages and tobacco	Food and soft drinks			
2004	100.00	100.00	100.00	100.00	100.00	100.00	100.00	100.00	100.00	100.00	100.00	100.00	3.00	100.00	2004
2005	103.15	105.65	100.60	99.36	103.66	106.33	102.16	99.94	111.37	100.27	106.47	103.90	4.11	104.11	2005
2006	107.39	107.20	102.10	97.95	108.01	112.48	101.50	99.31	115.93	101.20	109.20	110.24	3.84	108.11	2006
2007	108.12	112.10	100.41	97.68	109.45	111.84	106.41	98.38	113.26	100.72	114.63	115.14	1.86	110.12	2007
2008	109.29	126.61	99.82	99.04	110.14	120.79	114.13	104.77	121.92	101.23	123.16	135.01	9.89	121.01	2008
2009	114.17	132.60	104.23	101.21	109.15	117.61	113.73	112.32	121.03	105.04	135.39	139.87	2.75	124.34	2009
2010	120.10	136.88	110.49	103.00	106.92	120.71	114.77	115.30	127.23	109.16	151.80	144.63	3.75	129.00	2010
2010 January	117.48	135.04	110.32	102.72	107.03	119.16	114.84	115.48	126.89	107.86	145.14	143.57	0.06	127.83	2010
February	117.42	136.09	110.32	103.00	106.97	119.49	114.96	115.63	127.38	108.26	145.38	142.17	-0.28	127.48	
March	117.48	135.59	110.34	102.62	106.89	120.27	114.51	115.18	127.59	106.96	145.40	142.26	-0.03	127.44	
April	118.51	136.19	110.34	102.75	107.01	121.01	113.85	115.41	127.52	107.76	145.38	141.93	0.05	127.50	
May	119.37	136.58	110.34	103.06	107.07	121.37	114.87	115.72	127.27	108.60	145.29	141.64	0.07	127.60	
June	119.95	136.97	110.34	102.82	106.97	120.51	115.34	115.30	127.71	109.33	145.38	142.35	0.24	127.90	
July	120.56	137.01	110.34	103.07	106.94	121.21	114.05	114.65	126.34	108.81	156.69	142.99	0.47	128.50	
August	120.72	137.36	110.34	102.98	106.77	120.89	114.16	114.71	126.01	109.42	158.55	143.81	0.30	128.89	
September	121.62	136.74	110.81	103.06	106.88	120.50	114.75	114.91	126.52	109.52	158.56	148.26	1.39	130.68	
October	122.13	137.05	110.81	103.13	106.79	120.72	114.92	115.35	127.33	109.97	158.57	149.51	0.52	131.36	
November	122.83	138.65	110.81	103.52	106.79	121.58	115.23	115.58	127.99	111.55	158.58	148.86	0.10	131.50	
December	123.09	139.28	110.81	103.29	106.93	121.78	115.78	115.65	128.21	111.88	158.72	148.18	-0.10	131.36	



2010 - 2004

:6

Table 6: Consumer Price Indices and Percentage Changes in the West Bank by Major Groups of Expenditure, 2004 - 2010

Base Year (2004 = 100)

Period	Major Groups of Expenditure												% Change	All Items Index	
	Miscellaneous goods and services	Restaurants and cafes	Education	Recreational, cultural goods & services	Communications	Transportation	Medical care	Furniture, household goods	Housing	Textiles, clothing and footwear	Alcoholic Beverages and tobacco	Food and soft drinks			
2004	100.00	100.00	100.00	100.00	100.00	100.00	100.00	100.00	100.00	100.00	100.00	100.00	2.89	100.00	2004
2005	101.86	101.75	98.08	95.58	103.79	105.43	103.28	99.73	115.73	97.34	106.63	103.76	4.00	104.00	2005
2006	108.01	104.00	98.01	93.00	109.52	114.46	106.16	100.16	117.15	103.16	113.26	111.12	5.02	109.22	2006
2007	109.65	110.59	91.92	93.05	109.97	111.08	109.76	100.72	118.08	96.99	115.30	113.98	0.75	110.04	2007
2008	114.01	122.25	91.75	93.21	110.48	118.89	110.15	104.15	130.91	99.24	115.28	134.13	9.81	120.83	2008
2009	121.27	126.28	98.60	91.93	110.26	115.47	109.42	101.14	128.16	94.93	131.10	135.40	0.57	121.52	2009
2010	125.40	130.45	106.67	92.62	107.86	118.17	110.95	99.73	135.26	96.65	152.26	141.81	4.24	126.67	2010
2010 January	122.60	128.59	106.46	92.62	108.05	117.62	110.28	100.73	134.50	95.17	143.66	141.02	0.02	125.56	2010
February	122.46	129.42	106.46	92.73	107.83	117.45	109.94	100.05	135.10	95.43	144.68	140.01	-0.26	125.24	
March	122.63	128.86	106.52	92.73	107.47	118.23	110.35	99.65	135.49	94.55	145.31	139.51	-0.10	125.11	
April	122.99	129.40	106.52	92.84	107.93	118.71	110.01	99.71	135.36	96.22	145.22	139.15	0.03	125.14	
May	124.75	129.35	106.52	92.96	108.18	119.31	110.61	99.99	134.83	97.50	145.29	138.03	-0.16	124.94	
June	126.31	129.39	106.52	92.75	107.83	117.59	111.92	100.07	135.16	98.01	145.22	138.60	0.19	125.18	
July	126.95	129.45	106.52	92.72	107.76	118.46	111.10	99.69	134.73	97.26	157.90	138.15	0.33	125.59	
August	126.09	130.76	106.52	92.64	107.71	118.18	110.42	99.04	134.24	96.66	159.84	140.70	0.70	126.47	
September	126.84	131.05	106.99	92.34	107.81	117.53	111.39	99.76	134.79	96.42	159.97	146.08	1.75	128.68	
October	127.19	131.38	106.99	92.38	107.83	117.53	111.44	99.20	135.76	96.64	159.98	146.99	0.36	129.15	
November	128.09	133.59	106.99	92.56	107.83	118.56	111.25	99.28	136.48	98.06	160.03	146.68	0.19	129.40	
December	127.89	134.16	106.99	92.14	108.09	118.90	112.68	99.65	136.63	97.88	160.01	146.83	0.15	129.58	

2010 - 2004

:7

Table 7: Consumer Price Indices and Percentage Changes in Gaza Strip by Major Groups of Expenditure, 2004 - 2010

Base Year (2004 = 100)

Period	Major Groups of Expenditure												% Change	All Items Index	
	Miscellaneous goods and services	Restaurants and cafes	Education	Recreational, cultural goods & services	Communications	Transportation	Medical care	Furniture, household goods	Housing	Textiles, clothing and footwear	Alcoholic Beverages and tobacco	Food and soft drinks			
2004	100.00	100.00	100.00	100.00	100.00	100.00	100.00	100.00	100.00	100.00	100.00	100.00	3.18	100.00	2004
2005	100.39	100.15	100.30	96.39	104.12	108.78	99.79	100.52	107.08	98.85	105.75	102.31	2.45	102.45	2005
2006	106.46	102.33	108.14	94.91	108.37	114.10	101.00	99.09	108.60	100.62	107.27	110.59	4.64	107.20	2006
2007	106.84	108.54	100.27	94.28	108.56	112.81	104.34	101.45	104.90	95.96	119.88	115.30	1.56	108.87	2007
2008	108.92	130.03	101.15	97.42	108.80	124.17	103.92	119.75	115.28	102.35	143.20	140.64	13.98	124.08	2008
2009	116.73	144.67	102.84	99.13	107.08	124.33	98.76	136.62	114.90	112.69	150.52	147.47	4.42	129.57	2009
2010	122.28	151.60	107.59	101.00	105.51	126.22	98.50	143.17	122.73	114.49	156.62	147.01	1.72	131.79	2010
2010 January	120.01	150.13	107.59	100.21	105.58	125.78	98.28	144.71	121.71	115.03	156.63	148.78	0.09	132.27	2010
February	119.72	151.35	107.59	100.55	105.58	125.69	98.57	145.32	123.28	114.66	156.63	145.81	-0.73	131.30	
March	120.10	151.46	107.59	100.75	105.48	126.17	98.57	145.34	123.26	114.39	156.63	143.98	-0.50	130.64	
April	121.50	152.37	107.59	100.68	105.48	126.45	98.57	144.83	123.13	113.93	156.63	144.86	0.30	131.03	
May	121.49	152.47	107.59	101.08	105.48	126.84	98.57	144.70	122.29	113.95	156.58	144.10	-0.24	130.71	
June	121.63	152.04	107.59	101.24	105.48	125.80	98.57	144.25	122.86	113.88	156.58	144.69	0.13	130.88	
July	122.07	150.62	107.59	101.16	105.48	126.31	98.57	141.89	121.73	113.63	156.57	144.91	-0.11	130.73	
August	122.18	150.67	107.59	101.27	105.48	126.12	98.57	141.56	121.16	113.24	156.57	145.33	0.05	130.79	
September	123.85	151.58	107.59	101.25	105.49	125.99	98.16	141.56	121.32	113.66	156.57	151.44	1.92	133.30	
October	124.64	151.93	107.59	101.36	105.49	126.00	98.44	141.47	123.03	114.49	156.61	150.23	-0.14	133.12	
November	124.97	151.94	107.59	101.22	105.49	126.59	98.58	141.52	124.13	115.47	156.61	149.86	0.07	133.21	
December	125.21	152.63	107.59	101.24	105.58	126.87	98.57	140.92	124.80	117.55	156.79	150.13	0.26	133.55	

2010 - 2004

J1

:8

Table 8: Consumer Price Indices and Percentage Changes in Jerusalem J1 by Major Groups of Expenditure, 2004 - 2010

Base Year (2004 = 100)

Period	Major Groups of Expenditure												% Change	All Items Index	
	Miscellaneous goods and services	Restaurants and cafes	Education	Recreational, cultural goods & services	Communications	Transportation	Medical care	Furniture, household goods	Housing	Textiles, clothing and footwear	Alcoholic Beverages and tobacco	Food and soft drinks			
2004	100.00	100.00	100.00	100.00	100.00	100.00	100.00	100.00	100.00	100.00	100.00	100.00	4.42	100.00	2004
2005	104.26	107.01	102.32	103.08	102.04	107.86	103.67	97.65	108.63	102.17	106.70	105.80	5.10	105.10	2005
2006	103.62	109.24	102.74	101.91	103.19	108.52	100.25	98.11	116.84	98.85	106.41	109.20	1.77	106.96	2006
2007	105.23	126.42	107.64	99.25	105.77	115.18	104.66	94.97	116.23	105.47	105.86	113.79	3.10	110.28	2007
2008	106.78	140.50	105.65	100.18	106.84	123.29	118.96	96.37	118.22	101.85	109.60	130.81	7.12	118.13	2008
2009	107.61	145.61	108.65	104.94	106.01	120.81	122.18	104.05	116.91	107.65	122.51	138.78	3.54	122.32	2009
2010	113.44	148.32	112.33	107.80	103.41	127.53	124.61	108.74	120.65	115.72	144.66	146.80	5.25	128.74	2010
2010 January	110.72	146.72	112.05	107.71	103.62	123.84	125.97	107.87	120.57	112.88	134.06	144.65	0.17	126.69	2010
February	110.93	147.97	112.05	107.72	103.62	125.38	126.29	107.73	120.52	113.88	133.94	142.19	-0.41	126.17	
March	110.91	146.80	112.05	106.92	103.62	126.31	125.02	107.20	120.71	111.57	133.79	143.89	0.31	126.56	
April	111.80	147.97	112.05	107.17	103.62	127.76	124.09	107.92	120.70	112.77	133.78	143.17	0.10	126.69	
May	112.55	148.72	112.05	107.63	103.62	127.87	125.99	108.50	120.87	113.81	133.45	143.38	0.28	127.05	
June	113.22	149.23	112.05	107.10	103.57	128.20	126.02	108.05	121.38	115.71	133.79	145.05	0.62	127.84	
July	113.85	147.82	112.05	107.93	103.57	128.00	123.01	107.76	120.01	115.27	153.39	147.01	0.94	129.04	
August	114.51	148.63	112.05	107.84	103.11	127.50	124.19	108.48	119.87	117.58	155.97	146.48	0.11	129.18	
September	114.97	147.34	112.91	107.96	103.31	127.88	123.01	109.43	120.36	116.87	155.93	150.26	1.06	130.55	
October	115.24	147.85	112.91	108.14	103.06	128.60	123.23	110.19	120.66	117.75	155.93	152.73	0.83	131.63	
November	115.97	149.06	112.91	108.94	103.06	129.57	123.79	110.60	121.03	120.65	155.94	152.03	0.22	131.91	
December	116.57	151.73	112.91	108.56	103.11	129.50	124.68	111.19	121.15	119.87	155.97	150.71	-0.24	131.60	

**2010** **: 9**  
**Table 9 : Average Consumer Prices for Selected Commodities in the Palestinian Territory, 2010**  
**Prices in NIS**

Item Description	Brand	Origin	P.Unit	Palestinian Territory	J1 JerusalemJ1	Gaza Strip	West Bank				
<b>Rice</b>											
Long grain profiled rice	Uncle benz	USA	Pack/ 1kg	13.19	16.31	7.97	15.28	1 /			
Short grain profiled rice	Sun white	Australia	Sack/ 25 kg	154.18	162.47	164.61	135.45	25/			
Short grain profiled rice	Shoqha	Australia	Sack/ 1kg	7.55	8.00	6.61	8.05	1/			
<b>Flour</b>											
Haifa white flour	Zero	Israel	Sack/ 60kg	165.14	187.66	160.19	147.56	60/			
<b>Bread</b>											
White bread		Local	1kg	4.01	5.17	3.00	3.86	1			
<b>Qurshallah and Cake</b>											
Qurshallah bars with sesame		Local		11.55	12.86	12.00	9.78	1			
<b>Oriental deserts</b>											
Nablus fine kunafa		Local	1kg	28.88	37.89	20.17	28.58	1			
Baqlawas stuffed with pistachio		Local	1kg	49.71	66.58	31.81	50.72	1			
<b>Biscuits</b>											
Wafer biscuits with chocolate & milk	Ulcar	Turkey	Pack 36	13.61	12.77	15.00	13.06	36/			
Stuffed wafer biscuits	Elite	Israel	Pack/250 gm	3.68	4.28	3.00	3.76	250/			
Wafer biscuits	Jaricoh	Local	Pack/24 piec	10.77	11.00	10.67	10.65	24/			
Biscuits covered with chocolate	Kit Kat	England	3 bars	3.65	4.00	4.00	2.94	3			
<b>Macaroni (spaghetti)</b>											
Thin macaroni No. 3	Osem	Israel	Pack/500 gm	4.48	5.00	4.00	4.43	500/			3
Long macaroni	Al- Ghazal	Local	Pack/350 gm	3.00	2.92	3.71	2.37	350/			
<b>Noodles</b>											
Thin noodles No. 0	Abu-Ei'ta	Local	Pack 400 gm	3.36	3.65	4.00	2.43	400/			0
Thin noodles	Osem	Israel	Pack 250 gm	4.45	4.85	4.24	4.26	250/			
<b>Semolina</b>											
Unpacked semolina(A)	Haifa	Israel	Pack/ 1kg	4.95	5.78	4.68	4.39	1/			" "
<b>Crushed green wheat</b>											
Dry unpacked crushed green wheat		Local	1kg	12.34	13.25	14.00	9.76	1			

2010 :( ) 9  
**Table 9 (cont.) : Average Consumer Prices for Selected Commodities in the Palestinian Territory, 2010**  
**Prices in NIS**

Item Description	Brand	Origin	P.Unit	Palestinian Territory	J1 JerusalemJ1	Gaza Strip	West Bank				
<b>Meat</b>											
<b>Fresh meat</b>											
Fresh goat meat with bones		Local	1kg	66.10	71.08	56.53	70.69				1
Fresh beef meat		Local	1kg	48.52	47.42	49.81	48.35				1
<b>Fresh poultry</b>											
Fresh chicken without feathers		Local	1kg	17.01	21.61	14.42	15.01				1
<b>Fresh fish</b>											
Fresh red snapper		Local	1kg	33.50	42.75	27.85	29.90				1
Fresh whitening		Local	1kg	36.69	40.00	30.07	40.00				1
<b>Frozen fish</b>											
Frozen fish	Saraghos	Argentin	1kg	14.71	16.33	13.43	14.35				1
Frozen red fish	lord bash	Argentin	1kg	20.69	24.72	13.01	24.33				1
<b>Tinned fish</b>											
Sardine with peppers	Sunnqrut	Local	Tin/ 125 gm	5.41	5.81	6.00	4.43			125/	
Sardine with oil and pepper	Monka	Moroco	Tin/ 110 gm	4.79	6.06	4.17	4.13			110/	
Tinned tuna fish	Marina	Thailand	Tin/110 gm	5.26	5.85	4.61	5.32			110/	
<b>Dairy products and eggs</b>											
<b>Milk</b>											
<b>Fresh milk</b>											
Pasteurized milk 3% fat	Tnova	Israel	Tin/ 1kg	6.88	6.83	7.37	6.45			1 /	%3
<b>Powdered milk</b>											
Powdered milk	Nido	France	Can/ 2.5 kg	100.71	110.00	95.00	97.13			2.5/	
Powdered milk Nan (No.1)		Irlanda	Can/ 450 gm	25.84	33.06	20.00	24.50			450 /	1
<b>Dairy products</b>											
<b>Labaneh</b>											
Labaneh	Junaidi	Local	Sack/ 500	8.30	9.03	8.02	7.86			500	

2010 :( ) 9  
**Table 9 (cont.) : Average Consumer Prices for Selected Commodities in the Palestinian Territory, 2010**  
**Prices in NIS**

Item Description	Brand	Origin	P.Unit	Palestinian Territory	J1 JerusalemJ1	Gaza Strip	West Bank				
<b>Cheese</b>											
White boiled goat cheese		Local	1kg	26.89	29.78	25.00	25.89	1			
<b>Other dairy products</b>											
<b>Butter</b>											
Butter	Tnova	Israel	100 gm	4.05	4.48	3.92	3.74	100 /			
<b>Oils and fats</b>											
<b>Vegetable oils</b>											
<b>Olive oil</b>											
Olive oil		Local	1kg	35.47	41.00	31.30	34.11	1			
<b>Corn oil</b>											
Corn oil	Burgo	Israel	Can/ 3 liter	38.75	44.08	42.41	29.76	3 /			
<b>Fats</b>											
<b>Vegetable fat</b>											
Vegetable fat	Gazalle	Local	Can/ 2.25 kg	21.84	25.08	15.72	24.72	2.25/			
Vegetable fat	Clara	Holland	Can/ 2 kg	22.50	25.35	17.00	25.16	2/			
<b>Fruits and vegetables</b>											
<b>Fruits</b>											
<b>Fresh fruit</b>											
<b>Orange</b>											
Big size orange		Local	1kg	3.29	3.11	3.48	3.28	1			
<b>Lemon</b>											
Yellow lemon		Local	1kg	3.94	3.77	4.72	3.35	1			
<b>Kalamantina</b>											
Medium size kalamantina		Local	1kg	2.99	3.08	3.12	2.78	1			
<b>Other fruits</b>											
pummello		Local	1kg	3.14	3.18	3.17	3.06	1			

2010 :( ) 9  
**Table 9 (cont.) : Average Consumer Prices for Selected Commodities in the Palestinian Territory, 2010**  
**Prices in NIS**

Item Description	Brand	Origin	P.Unit	Palestinian Territory	J1 JerusalemJ1	Gaza Strip	West Bank				
<b>Banana</b>											
Medium size banana		Local	1kg	3.68	3.81	3.80	3.44				1
Big size banana		Israel	1kg	3.99	4.51	3.78	3.66				1
<b>Apples</b>											
Red apple		Israel	1kg	5.74	5.84	5.52	5.86				1
Normal apple		Local	1kg	5.51	5.73	5.95	4.83				1
<b>Grapes</b>											
Grapes white				6.20	6.83	5.69	6.06				1
Grapes black		Local	1kg	6.10	7.38	4.81	6.11				1
<b>Water melon</b>											
Striped water melon		Israel	1kg	2.21	2.75	1.41	2.47				1
<b>Sweet melon</b>											
Melon		Israel	1kg	3.02	2.95	3.39	2.72				1
<b>Plums</b>											
Plums, red		Local	1kg	5.44	6.71	4.63	4.96				1
<b>Raisins</b>											
Raisins		Turkey	1kg	24.91	26.36	23.52	24.84				1
<b>Dates</b>											
Dates		Israel	Pack/ 1kg	24.28	35.00	15.75	22.09			1/	
<b>Nuts</b>											
<b>Pistachio</b>											
Unhusked roasted pistachio			1kg	54.11	55.67	51.54	55.13				1
<b>Peanut</b>											
Roasted peanut		Local	1kg	14.06	12.42	15.46	14.30				1
<b>Walnut</b>											
Unpacked husked walnut		Israel	1kg	46.81	52.13	43.60	44.71				1
<b>Almonds</b>											
Roasted husked salted almonds		Local	1kg	53.96	58.00	50.50	53.37				1
<b>Seeds</b>											
Roasted water melon seeds		Local	1kg	39.92	40.58	45.85	33.32				1

2010 : ( ) 9  
**Table 9 (cont.) : Average Consumer Prices for Selected Commodities in the Palestinian Territory, 2010**

Prices in NIS

Item Description	Brand	Origin	P.Unit	Palestinian Territory	J1 JerusalemJ1	Gaza Strip	West Bank				
<b>Assorted nuts</b>											
Assorted nuts		Local	1kg	46.43	51.58	49.88	37.81				1
<b>Fresh vegetables</b>											
<b>Tomato</b>											
Local tomato		Local	1kg	3.93	3.39	4.38	4.03				1
Green house tomato		Local	1kg	4.01	5.05	2.78	4.22				1
<b>Dry onion</b>											
Local dry onion		Local	1kg	2.75	3.13	2.25	2.85				1
Dry onion		Israel	1kg	2.71	3.13	2.28	2.72				1
<b>Garlic</b>											
Local garlic		Local	1kg	15.76	15.10	16.87	15.30				1
Garlic		Israel	1kg	17.74	17.45	18.10	17.66				1
<b>marrow</b>											
Small marrow		Local	1kg	4.09	4.54	3.14	4.60				1
<b>Eggplant</b>											
Large eggplant		Local	1kg	2.82	3.39	2.02	3.04				1
<b>Okra</b>											
Green okra		Local	1kg	12.80	12.69	14.32	11.39				1
<b>Beans</b>											
Green beans		Local	1kg	8.23	10.41	5.51	8.78				1
<b>Jew's mallow</b>											
Green Jew's mallow		Local	1kg	6.62	12.94	2.77	4.15				1
<b>Green pepper</b>											
Hot green pepper		Local	1kg	5.16	4.78	5.70	5.01				1
Green pepper		Local	1kg	4.62	5.16	4.01	4.70				1
<b>Spinach</b>											
Spinach		Local	1kg	4.89	6.21	2.49	5.99				1
<b>Cauliflower</b>											
Cauliflower		Local	1kg	3.58	3.91	2.98	3.85				1



2010 :( ) 9  
**Table 9 (cont.) : Average Consumer Prices for Selected Commodities in the Palestinian Territory, 2010**

**Prices in NIS**

Item Description	Brand	Origin	P.Unit	Palestinian Territory	J1 JerusalemJ1	Gaza Strip	West Bank				
<b>Cabbage</b>											
White cabbage		Local	1kg	3.42	3.24	3.32	3.70				1
<b>Cucumber</b>											
Greenhouse cucumber		Local	1kg	2.92	3.29	1.95	3.22				1
<b>Lettuce</b>											
Lettuce		Local	1kg	3.88	3.76	4.07	3.81				1
<b>Carrot</b>											
Carrot		Local	1kg	3.38	4.55	2.18	3.42				1
Carrot		Israel	1kg	3.69	4.78	2.83	3.47				1
<b>Potato</b>											
Medium size potato		Local	1kg	3.09	3.36	2.28	3.62				1
Medium size potato		Israel	1kg	3.17	3.31	3.00	3.19				1
<b>Tomato paste</b>											
Tomato paste	Bray time	Israel	Can/ 580 gm	5.05	5.10	5.24	4.81	580 /			
<b>Frozen vegetables</b>											
<b>Frozen sweet peas</b>											
Frozen green sweet peas		Israel	Sack/ 1kg	9.69	12.71	8.17	8.19	1 /			
<b>Frozen green beans</b>											
Frozen green beans		Israel	Sack/ 1kg	10.26	14.58	7.46	8.74	1 /			
<b>Other frozen vegetables</b>											
Frozen green okra		Israel	Sack/ 1kg	9.41	14.10	6.54	7.58	1 /			
<b>Vegetables &amp; legumes tinned</b>											
<b>Lentils</b>											
Lentils		Local	1kg	7.58	8.97	5.94	7.81				1
<b>Crushed lentils</b>											
Crushed lentils		Turkey	1kg	9.18	10.88	8.24	8.44				1
<b>Chick beans</b>											
Chick beans		Turkey	1kg	7.89	10.36	6.38	6.92				1
<b>Fava beans</b>											
Local unpacked small Fava beans		Turkey	1kg	6.57	9.23	5.13	5.37				1

2010

:( ) 9

Table 9 (cont.) : Average Consumer Prices for Selected Commodities in the Palestinian Territory, 2010

Prices in NIS

Item Description	Brand	Origin	P.Unit	Palestinian Territory	J1 JerusalemJ1	Gaza Strip	West Bank				
<b>Dry beans</b>											
Large dry beans		Turkey	1kg	8.13	10.13	7.33	6.94				1
<b>Dried vegetables</b>											
<b>Dried Jew's mallow</b>											
Crushed Jew's mallow		Local	1kg	25.18	35.00	17.53	23.00				1
<b>Tinned legumes</b>											
<b>Fava beans (tinned)</b>											
Small Fava beans (tinned)	Al- Badr	Local	Can/ 560 gm	4.12	4.92	3.78	3.66				560/
<b>Chick beans (tinned)</b>											
Medium chick beans (tinned)	Al- Badr	Local	Can/ 500 gm	4.22	5.04	3.83	3.79				500/
Medium chick beans (tinned)	Telma	Israel	Can/ 500 gm	4.53	5.21	4.39	4.00				500/
<b>Sugar and Confectionery</b>											
<b>Sugar</b>											
Fine white sugar	White sugar	Israel	Pack/ 1kg	4.23	4.89	3.56	4.23				1/
White sugar	Crystal	England	Sack/ 50 kg	170.90	186.49	151.85	174.35				50/
<b>Halvah</b>											
Halvah	Al- Hilal	Israel	Can/ 500 gm	9.30	10.35	8.43	9.11				500/
<b>Chocolate</b>											
Chocolate	Mackinto-sh	England	Pack/ 1kg	68.91	69.63	72.60	64.51				1 /
Chocolate	Bon bon	Brazil	Pack/600 gm	22.03	24.57	20.00	21.53				600/
<b>Tea, coffee &amp; cocoa</b>											
<b>Tea bags</b>											
Tea bags	Lipton	England	Pack100	15.13	16.07	15.35	13.98				100/
<b>Ground coffee</b>											
Ground coffee		Colombi	1kg	43.09	60.00	32.92	36.34				1
<b>Nescafe'</b>											
Nescafe'	Nestle	France	Can/ 200 gm	21.13	22.39	21.08	19.93				200/
Nescafe'	Maxwell	U.S.A	Can/ 200 gm	24.09	25.36	22.00	24.89				200/
<b>Cocoa</b>											
Cocoa Dwantry	Nestle	France	Can/ 500 gm	15.24	15.28	13.00	17.43				500/

2010

:( ) 9

Table 9 (cont.) : Average Consumer Prices for Selected Commodities in the Palestinian Territory, 2010

Prices in NIS

Item Description	Brand	Origin	P.Unit	Palestinian Territory	J1 JerusalemJ1	Gaza Strip	West Bank				
Cocoa	Elite	Israel	Can/ 150 gm	4.70	6.51	3.12	4.47	150/			
<b>Spices</b>											
<b>Black pepper</b>											
ground black pepper			250 gm	8.12	7.93	8.08	8.36	250			
<b>Assorted spices</b>											
Assorted spices			250 gm	8.93	9.24	8.78	8.79	250			
<b>Table salt</b>											
White table salt	First table	Israel	Pack/ 1kg	2.10	3.52	1.12	1.68	1/			
<b>Other foods</b>											
<b>Thyme</b>											
ground thyme with spices "A"		Local	1kg	23.40	26.34	22.66	21.19	1			" "
<b>Tehinah</b>											
Tehinah	Al- A'alul	Local	Pack/ 1kg	16.42	19.78	13.35	16.14	1/			
<b>Mineral water</b>											
Mineral water	Al- Barakeh	Egypt	Bottle 15 liter	3.38	3.92	3.71	2.50	1.5/			
Mineral water	Eden	Israel	Bottle 15 liter	3.02	3.71	2.49	2.87	1.5/			
<b>Soft drinks with soda</b>											
Cola	Coca cola	Israel	Can/ 330 ml	2.98	4.26	2.60	2.08	330/			
Cola	Club	Local	Bottle1.5 liter	3.83	3.79	4.14	3.55	1.5/			RC
<b>Juice</b>											
Fruit Juice	Crystal	Israel	Bottle 2 liter	5.34	6.73	5.13	4.18	2/			
Fruit Juice	Al- Muluki	Local	Bottle 4 liter	22.85	23.96	21.66	22.93	4/			
<b>Cigarettes</b>											
<b>Local cigarettes</b>											
Imperial		Local	20 cigarettes	15.54	13.92	20.00	12.71	20/			
<b>Imported cigarettes</b>											
Medium cigarette	Rothmans	England	20 cigarettes	18.79	19.50	18.00	18.86	20/			
<b>Fabric, clothes &amp; footwear</b>											
<b>Fabric &amp; clothes</b>											
<b>Fabrics</b>											

2010 :( ) 9  
**Table 9 (cont.) : Average Consumer Prices for Selected Commodities in the Palestinian Territory, 2010**

Prices in NIS

Item Description	Brand	Origin	P.Unit	Palestinian Territory	J1 JerusalemJ1	Gaza Strip	West Bank				
<b>Women clothes fabric</b>											
Fabric for clothes innerside	Tefta	Israel	Meter	11.61	13.61	14.33	6.90				
Pure velvet fabric (115cm width)	Super quality	Korea	Meter	23.38	34.25	21.50	14.40				115
<b>Tricot wool fiber</b>											
Wool rolls	Acrylan	Israel	Hank/100 gm	10.36	14.17	9.77	7.15	100/			
<b>Total ready made clothes</b>											
Jeans trousers	Levis	Israel		212.66	266.88	124.44	246.67				
Cloth trousers	Florida	Local		88.70	137.50	60.34	68.26				
<b>Total ready made children clothes</b>											
Shirt for children	Cow boy	Local		28.55	34.71	27.50	23.44				
Blouse for children	Sun	Local		23.79	31.63	20.00	19.73				
<b>Charges of tailoring dresses</b>											
Charges of tailoring official uniform				320.06	492.36	167.50	300.31				
Charges of tailoring a skirt (maxi)				72.34	136.00	31.53	49.48				
Charges of tailoring a dress (shanil)				182.25	395.00	60.00	91.67				
<b>Footwear</b>											
<b>Shoes for men</b>											
Natural leather shoe	Ispido	Israel		167.27	239.58	138.75	123.47				
Spot boot	Forza	Local		79.43	93.25	89.10	55.94				
Interlaced sandal for men (natural leather)	Naboli	Local		74.90	58.96	99.86	65.87				
<b>Foot wear for women</b>											
Shoes	King shoes	Local		65.30	83.89	59.31	52.71				
Medium boot	Forza	Local		71.56	87.50	68.43	58.75				

2010

:( ) 9

Table 9 (cont.) : Average Consumer Prices for Selected Commodities in the Palestinian Territory, 2010

Prices in NIS

Item Description	Brand	Origin	P.Unit	Palestinian Territory	J1 JerusalemJ1	Gaza Strip	West Bank				
Natural leather sandal	Bama	Local		76.89	95.83	63.10	71.74				
<b>Footwear for children</b>											
Shoes for girls	Al- wafa	Local		52.08	71.25	37.08	47.91				
Boot for boys	Reem	Local		62.00	58.75	45.07	82.19				
<b>Electricity</b>											
Electricity- Kilowatt/ Minimum		Israel	Kilowatt	0.53	0.56	0.47	0.56				/
Electricity- Kilowatt/ Extra		Israel	Kilowatt	0.56	0.58	0.47	0.62				/
<b>Gas</b>											
Propane tank		Local	Tank/ 12 kg	73.01	94.21	61.99	62.82	12/			
<b>Diesel</b>											
Diesel for heating		Israel	1 liter	5.85	6.63	5.45	5.45	1			
<b>Kerosene</b>											
Kerosene		Israel	1 liter	5.87	6.69	5.45	5.45	1			
<b>Water</b>											
One cubic meter/ minimum		Local	Cubic meter								
One cubic meter/ minimum		Israel	Cubic meter	2.93	2.19	2.50	4.10				/
One cubic meter/ extra		Israel	Cubic meter	3.28	2.19	2.70	4.96				/
<b>Furniture</b>											
Bedroom furniture, made of "sandwich"		Local		6832.09	7500.00	8791.67	4204.60				
Seven benches suite of corduroy deluxe	Borma	Local		3800.16	5437.50	3418.06	2544.93				7
Buffet (3pieces of sandwich wood)		Local		2098.93	2241.67	2674.07	1381.05				3
Plastic chairs	Yunis	Israel		242.26	250.00	308.61	168.18				
<b>Carpets</b>											
Impaired nylon carpet 2x 3	Delta	Israel	Piece	359.21	400.00	466.67	210.95				3x2
Pure moquette, 1mil	Apolo	USA	M2	19.12	16.67	29.86	10.84	2			
<b>Blankets and quilts</b>											
Summer quilt (single)	Ulufil	Israel		86.27	56.46	150.00	52.36				
Summer quilt (polyester cloth)		Local		84.27	131.96	73.85	46.99				
Wool blanket - acrylan (double)	Mora- king	Spain		265.14	375.00	120.42	300.00			-	+
<b>Mattresses</b>											
Bed mattress 190/160 spring	Super sleep	Local		570.16	700.00	531.25	479.24				160/190

2010 :( ) 9  
**Table 9 (cont.) : Average Consumer Prices for Selected Commodities in the Palestinian Territory, 2010**  
**Prices in NIS**

Item Description	Brand	Origin	P.Unit	Palestinian Territory	J1 JerusalemJ1	Gaza Strip	West Bank				
<b>Refrigerators</b>											
13 feet refrigerator	L G	Corea		2951.22	3316.67	2670.05	2866.95				16
<b>Washing machines</b>											
1.5kg plastic tank washing machine	Calor	France		581.04	695.00	525.00	523.13			1.5	
<b>Gas stoves/ cookers</b>											
Nickel stove 90x60	Universal	Italy		3129.44	4714.00	2095.83	2578.47			60x90	
<b>Heaters</b>											
Kerosene heater	Fojica	Japan		184.24	180.00	200.00	172.72				
<b>Other household appliances</b>											
Normal telephone device (with buttons 8 memory digits)	Panasonic	Japan		302.63	350.00	365.00	192.46			8 +	
Electric vapor iron- 1487	Philips	Singapor		130.30	129.58	141.88	119.44			215-	
Long stick fan - small bulb	Atlas	China		136.36	145.63	120.00	143.47			+	
<b>Household utensils</b>											
<b>Glassware utensils</b>											
Set of plates (6)	Arcopal	France		29.10	39.00	29.71	18.60			( 6)	
Flat plates (6)		Argentin		25.24	45.00	19.89	10.83			( 6)	
<b>Utensils of steel</b>											
Pressure cooker, 8 liters	Sep	France		319.12	400.00	247.50	309.85				8
Frying pan, size 24cm	France			53.85	55.00	39.60	66.95			( 24)	
Kettle for tea, 1.5 liters		China		54.32	60.58	69.24	33.14			1.5	
Normal lamb, 100 watt	Tingisram	Hungary		3.48	4.13	4.61	1.70			100	
Neon lamb, 40 watt	Atlas	Israel		7.10	7.28	8.71	5.32				40
<b>Cleaning powders &amp; liquids</b>											
Chlorine	Albatta	Local	4 liters	6.22	6.92	5.94	5.81			4 /	
Washing powder	Persil	Germany	4.5 liters	41.02	41.47	47.51	34.08			4.5/	
Washing powder	Star	Germany	Gallon/ 1kg	7.50	8.51	7.92	6.07			1/	

2010

:( ) 9

Table 9 (cont.) : Average Consumer Prices for Selected Commodities in the Palestinian Territory, 2010

Prices in NIS

Item Description	Brand	Origin	P.Unit	Palestinian Territory	J1 JerusalemJ1	Gaza Strip	West Bank				
<b>Household services</b>											
<b>Washing, cleaning, ironing</b>											
Washing a uniform - ironing				22.67	34.17	14.13	19.70				+
Washing a trousers - ironing				12.01	23.76	6.22	6.06				+
ironing a dress				12.95	22.08	7.47	9.29				
<b>Bicycles</b>											
Bicycle, 12 inch diameter	B.M.X	Taiwan		227.44	242.50	242.01	197.69		B.M.X		16
<b>Accessories for means of</b>											
<b>Tires</b>											
Steel tire 13/70	Yokohama	Korea		244.58	350.00	225.00	158.73				70/13
Steel tire 14/185	Marshal	USA		302.04	365.00	274.72	266.40				185/14
<b>Parts &amp; accessories (or repairs)</b>											
Front Fiat break, 82-94	Friendix	Israel		39.52	41.25	45.00	32.30				94-82
26 inch wipers	Bush	Germany		49.56	70.00	35.00	43.68				20
Platinum for Suparu		Japan		18.92	28.92	15.00	12.84				
<b>Gasoline &amp; other fuel</b>											
Excellent gasoline 96		Israel	1 liter	6.32	6.66	6.15	6.15			1	96
Diesel		Israel	1 liter	5.84	6.61	5.45	5.45			1	
<b>Insurance</b>											
Third party for a private car,Mottor 2000				1979.17	3000.00	1477.50	1460.02				2000
Third party for a private car,Mottor 1600				1866.30	3000.00	1287.81	1311.07				1600
Third party for a private car,Mottor 900				1613.35	3000.00	929.17	910.89				900
Compulsory for a private car,Mottor 1600				1275.76	1700.00	1067.08	1060.21				1600
Compulsory for a private car,Mottor 900				1057.10	1729.17	731.39	710.73				900
<b>Education services</b>											
<b>Education fees</b>											
<b>Kindergartens</b>											
Fees for kindergartens -without transport			Yearly	1909.86	3800.00	674.34	1255.25				

2010 :( ) 9  
**Table 9 (cont.) : Average Consumer Prices for Selected Commodities in the Palestinian Territory, 2010**

Prices in NIS

Item Description	Brand	Origin	P.Unit	Palestinian Territory	J1 JerusalemJ1	Gaza Strip	West Bank				
<b>Basic education</b>											
Fees for private basic education			Yearly	2373.22	3300.00	1350.00	2469.65				
<b>Secondary education</b>											
Fees for private secondary education			Yearly	4061.69	4933.33	1733.40	5518.33				
<b>Stationery</b>											
<b>Different types of stationery</b>											
Rubber tipped pencil		China	6 pencil	3.30	4.23	2.56	3.11	6 /			
Fountain pen	Pilot	Israel		6.59	8.83	4.96	5.97				
Ball- point pen	BIC	Italy		1.13	1.40	1.00	1.00				
Eraser			Eraser	0.58	0.71	0.50	0.52				
<b>Copy books</b>											
Copy book	Jerusalem	Local	40 papers	1.00	1.00	1.00	1.00	40			
Copy book	Jerusalem	Local	64 papers	1.61	2.04	1.33	1.45	64			
<b>General physician visit charge</b>											
First class General charges				39.89	58.54	28.68	32.46				
Normal teeth plucking out				40.21	60.00	25.69	34.93				
<b>Medicine</b>											
Voltarin S.R 100gm	Gba- giegy	Switzerlan	10 tablets	24.05	23.21	24.00	24.93	10/			100
Glubren	Dexon	Israel	12 tablets	11.27	14.71	6.49	12.62	30/			
Digoxin	Teva	Israel	40 tablets	14.43	17.13	12.00	14.16	40/			
Nocaf	Biet Jala	Local	100 mg	14.62	15.96	13.00	14.89	100/			
Terramycin	Fizer	USA	tube	16.39	21.50	12.50	15.18				
Zentab 150gm	Teva	Israel	20 tablet	14.21	16.19	10.83	15.60	20/			
Dex-otic	Teva	Israel	Drop	17.01	19.29	13.00	18.75				
Minolit	white	Germany	21 tablets	39.30	39.21	45.00	33.68	21/			
<b>Recreation &amp; culture</b>											
<b>Recreation</b>											
<b>T.V sets</b>											
Colored T.V, 20 inches, 20 A80B	Gold star	Korea		1071.76	1227.78	1185.42	802.08		LG	A 80 B 20	20
Colored T.V, 21 inches, 212	J.V.C	Singapor		1004.24	1505.56	870.14	637.04		J.V.C	212	21



2010 :( ) 9  
**Table 9 (cont.) : Average Consumer Prices for Selected Commodities in the Palestinian Territory, 2010**

Prices in NIS

Item Description	Brand	Origin	P.Unit	Palestinian Territory	J1 JerusalemJ1	Gaza Strip	West Bank				
<b>Video systems set</b>											
Video A-4head	Gold star	Korea		521.67	615.00	400.00	550.00			LG	A-4head
<b>Photographing films</b>											
Film 135ml, 36 photos	Agfa	Germany		13.06	12.50	15.00	11.68				36 135
Film 135ml, 36 photos	Fuji	Japan		13.49	12.00	15.00	13.46				36 135
<b>Journals &amp; magazines (periodicals)</b>											
Al- Quds newspaper		Local		2.17	2.50	2.00	2.00				
Kul Al- Arab newspaper		Israel		4.33	5.00	4.00	4.00				
Al- Hawadeth magazines		Egypt		8.67	10.00	7.50	8.50				
<b>Personal services</b>											
<b>Perfumes</b>											
Perfume for women	Azzaro	France	Bottle/ 25 ml	190.68	210.00	129.31	232.72	25/			
Perfume for men	Aramis	France	Bottle/ 75 ml	251.19	250.83	250.00	252.75	75 /			
Perfume for men	One Man	France	Bottle/ 100	111.10	180.21	67.71	85.39	100/			
<b>Beauty care material</b>											
A whole make- up set	J.D	Israel		232.12	271.67	247.50	177.18			J.D	
Mascara	Careline	Israel		40.66	42.00	32.50	47.48				
Hand cream	Fenjal	Israel		8.82	10.33	9.50	6.63				
<b>Toilet soap &amp; shampoo</b>											
Toilet soap	LUX	Local	Piece/ 75 gm	2.91	3.25	2.75	2.72	75/			
Toilet soap	Camay	France	Piece/ 75 gm	3.46	4.54	3.00	2.84	75/			
Shampoo	Sunsilk	USA	Refill/ 500 ml	16.79	17.71	15.36	17.29	500 /			
<b>Shaving foam</b>											
Shaving foam	Man	Local	Refill/ 50 ml	6.05	8.15	5.00	4.99	50/			
<b>Shaving blades</b>											
Shaving blades	Gillette G II	USA	5 blades	29.26	35.46	19.00	33.32	5/			
<b>Tooth paste</b>											
Tooth paste	Sunsodine	USA	Refill/ 75 ml	20.77	18.81	22.36	21.13	75/			
<b>Hand kerchiefs &amp; sanitary towels</b>											
Hand kerchiefs small size	Tako	Local	Pocket/100	3.42	3.00	3.67	3.59	100			

2010 :( ) 9  
**Table 9 (cont.) : Average Consumer Prices for Selected Commodities in the Palestinian Territory, 2010**  
**Prices in NIS**

Item Description	Brand	Origin	P.Unit	Palestinian Territory	J1 JerusalemJ1	Gaza Strip	West Bank				
<b>Tooth brushes</b>											
Tooth brushes	Jordan	Germany		6.29	7.08	4.30	7.48				
<b>Coffee shops &amp; restaurants services</b>											
<b>Restaurants</b>											
<b>Chick peas (Hummos) plate</b>											
Chick peas (Hummos) plate				7.35	12.86	2.00	7.20				
<b>Fava beans (Foul) plate</b>											
Fava beans (Foul) plate				6.40	10.78	1.50	6.92				
<b>Sandwich</b>											
Falafel sandwich				3.42	6.00	1.06	3.19				
Shawerma sandwich				10.75	17.07	6.31	8.87				
<b>Gold</b>											
Locally manufactured gold - karat 21		Local	gm	131.19	134.22	126.59	132.76				21
Locally manufactured gold -karat 24		Local	gm	143.75	146.13	140.08	145.04				24

2010 2009

:10

Table 10: Producer Price Indices and Percentage Changes by Categories in the Palestinian Territory, 2009, 2010

Base Year (2007=100)

Categories	Producer Price Index								
	% Change	Total		% Change	Exported		% Change	Local	
		2010	2009		2010	2009		2010	2009
Agriculture	5.96	115.27	108.79	7.46	117.43	109.27	5.92	115.20	108.76
Fishing	1.20	103.93	102.70	1.20	103.93	102.70	1.20	103.93	102.70
Mining & Quarrying	-0.11	109.23	109.36	-0.11	109.23	109.36	-0.11	109.23	109.36
Manufacturing	2.12	112.63	110.29	1.49	109.14	107.53	2.27	113.45	110.93
<b>All Items Price Index</b>	<b>3.36</b>	<b>113.50</b>	<b>109.81</b>	<b>1.95</b>	<b>109.80</b>	<b>107.69</b>	<b>3.60</b>	<b>114.06</b>	<b>110.09</b>

2010 2009

:11

**Table 11: Wholesale Price Indices and Percentage Changes by Categories in the Palestinian Territory, 2009 , 2010**  
**Base Year (2007=100)**

Categories	Wholesale Price Index								
	% Change	Total		% Change	Imported		% Change	Local	
		2010	2009		2010	2009		2010	2009
Agriculture	5.31	118.12	112.17	4.21	115.77	111.09	6.08	122.02	115.03
Fishing	0.17	101.37	101.21	0.02	101.20	101.18	0.31	101.55	101.24
Mining & Quarrying	-0.70	109.26	110.03	0.65	109.93	109.22	-2.02	108.59	110.83
Manufacturing	3.10	112.47	109.09	2.75	112.30	109.29	4.25	113.57	108.94
<b>All Items Price Index</b>	<b>3.70</b>	<b>114.04</b>	<b>109.97</b>	<b>2.92</b>	<b>112.71</b>	<b>109.51</b>	<b>4.91</b>	<b>116.82</b>	<b>111.35</b>

2010 2009

:12

**Table 12: Construction Cost Indices and Percentage Changes by Major Groups in the West Bank, 2009 , 2010**  
**Base Month December (2007 = 100)**

Major Groups	Construction Cost Index								
	% Change	Buildings (residential and non-residential) ( )		% Change	Non-residential buildings		% Change	Residential buildings	
		2010 Average 2010	2009 Average 2009		2010 Average 2010	2009 Average 2009		2010 Average 2010	2009 Average 2009
Raw Materials	1.48	105.84	104.30	1.61	105.29	103.62	1.42	106.14	104.65
Hiring of equipment	4.70	137.28	131.11	4.41	135.54	129.82	4.86	138.21	131.81
Labour Cost and Wages	1.89	118.89	116.69	1.57	118.58	116.75	1.89	118.90	116.69
<b>All- Items Construction Cost Index</b>	<b>1.56</b>	<b>109.35</b>	<b>107.67</b>	<b>1.56</b>	<b>109.01</b>	<b>107.34</b>	<b>1.54</b>	<b>109.57</b>	<b>107.91</b>

2010      2009

:13

**Table 13: Road Cost Indices and Percentage Changes by Type of Road in the West Bank, Average 2009 , Average 2010  
Base Month (December 2008 = 100)**

Type of Road	% Change	2010 Average 2010	2009 Average 2009
Agricultural roads	4.79	108.27	103.33
Maintenance of the municipality roads	3.67	108.03	104.20
Development of the municipality roads	3.50	106.66	103.06
Maintenance of outside roads	3.66	107.15	103.36
Development of outside roads	3.73	107.31	103.46
<b>All items of Road Cost index</b>	<b>3.75</b>	<b>107.39</b>	<b>103.51</b>