

**2009 ،2008**

**2011 /**

**2006**

.2011 - 1432 ©

:

*2009 2008*

**.2011**

:

- **1647** . .

(970/972) 2 298 2700 :

(970/972) 2 298 2710 :

1800300300 :

diwan@pcbs.gov.ps :

http://www.pcbs.gov.ps :





.

2009 ،2008

(PNA)

2010 (CFG)

.(SDC)

.

(CFG)

.



:

- 
- 
- 
- 

.2007

2009 2008

2004

:2009 ,2008

2009	2008	
3.9699	3.5816	





•

•

•

•

•

•



SNA'93

2008-1994

.2008-1997

2009

2008

**2011**



<b>25</b>		:
25	1.1	
26	2.1	
<b>27</b>		:
<b>35</b>		:
35	1.3	
39	2.3	
<b>41</b>		:
41	1.4	
41	1.1.4	
43	2.1.4	
44	2.4	
<b>47</b>		:
47	1.5	
48	2.5	
<b>51</b>		
53	(2009 ,2008)	
73	(2009 ,2008)	
93	(2009 ,2008)	



**(2009 2008)**

<b>55</b>			<b>:1-1</b>
		2009 2008	
<b>56</b>			<b>:2-1</b>
		2009 2008	
<b>57</b>			<b>:3-1</b>
		2009 2008	
<b>58</b>	2009 2008		<b>:1-2</b>
<b>59</b>	2009 2008		<b>:2-2</b>
<b>60</b>	2009 2008		<b>:3-2</b>
<b>61</b>			<b>:1-3</b>
		2009 ,2008	
<b>62</b>	2009 ,2008		<b>:2-3</b>
<b>63</b>	2009 2008		<b>:3-3</b>
<b>64</b>			<b>:1-4</b>
		2009 2008	
<b>65</b>	2009 2008		<b>:2-4</b>
<b>66</b>	2009 2008		<b>:3-4</b>
<b>67</b>			<b>:1-5</b>
		2009 2008	





<b>81</b>					<b>:1-10</b>
		2004	:	2009 2008	
<b>82</b>					<b>:2-10</b>
		2004	:	2009 2008	
<b>83</b>	2009 2008				<b>:3-10</b>
		2004	:		
<b>84</b>					<b>:1-11</b>
		2004	:	2009 2008	
<b>85</b>	2009 2008				<b>:2-11</b>
		2004	:		
<b>86</b>	2009 2008				<b>:3-11</b>
		2004	:		
<b>87</b>					<b>:1-12</b>
		2004	:	2009 2008	
<b>88</b>	2009 2008				<b>:2-12</b>
		2004	:		
<b>89</b>	2009 2008				<b>:3-12</b>
		2004	:		
<b>90</b>					<b>:1-13</b>
		2004	:	2009 2008	
<b>90</b>	2009 2008				<b>:2-13</b>
		2004	:		
<b>91</b>	2009 2008				<b>:3-13</b>
		2004	:		
<b>91</b>	2009 2008				<b>:1-14</b>
		2004	:		
<b>92</b>	2009 2008				<b>:2-14</b>
		2004	:		
<b>92</b>	2009 2008				<b>:3-14</b>
		2004	:		

(2009 ,2008)

95		:15
	2009 2008	
97		:16
	2009 2008	
99		:17
	2009 2008	
101		:18
	2009 2008	
103		:19
	2004 :	2009 2008
105		:20
	2004 :	2009 2008
107		:21
	2004 :	2009 2008

36	(2009 -2005)		:1
		.( )	
37	(2009 -2005)		:2
		.( )	
37	(2009 -2005)		:3
		.( )	
38	.2009		:4
39			:5
	.2004	:( )	(2009 -2005)



:

:

:

.1

2009

( )

2004 : (2009 ,2008)

( )

2009	2008	2009	2008	
5,241.3	4,878.3	6,763.6	6,247.3	
5,716.7	5,409.8	7,310.8	6,883.8	
7,682.6	8,308.5	9,436.9	10,056.3	
986.2	2,169.8	506.1	1,889.7	

.2009

(2009 ‘2008)

2004 :

2009	2008	
5.6	5.9	
14.3	15.6	
7.4	6.4	
10.3	10.2	
7.3	7.1	
5.1	5.7	
21.2	20.7	
14.3	14.0	
14.5	14.4	*
100	100	

:(\*)

:

2004 : (2009 ‘2008)

( )

2009	2008	2009	2008	
1,415.7	1,356.3	1,826.9	1,737.0	
1,544.1	1,504.1	1,974.7	1,913.9	
2,075.1	2,310.0	2,549.0	2,796.0	

.2

:2009 ‘2008

2009

(2009 ,2008)

2004 :

( )

2009	2008	2009	2008	
2,042.9	1,806.5	2,681.1	2,315.0	
343.8	294.6	455.3	409.8	
1,162.8	1,131.5	1,305.4	1,200.5	
296.1	304.8	306.1	384.8	
1,395.7	1,340.9	2,015.7	1,937.2	

.( )





1993

1993

1994

2008

2009

1993

**1.1**

) "

.(1993

2009 2008

2.1

:

:

:

:

:

:

:

.1993

: .1

:

:

.

:

\_\_\_\_\_

.

:

\_\_\_\_\_

.

.

:

\_\_\_\_\_

.

:

. 1 "

"

:

\_\_\_\_\_

.

)

:

(

)

(

.

.

:

\_\_\_\_\_

.

)

(

.

.

\_\_\_\_\_

1

:

:"

"

:

.2

:

"

"

:

)

(

:

■

■

■

:

( )

( )

:

)

:

(

-

+

)

(

:



: .3

:

.

.

.

.

1993

.

1968

:

:

:

.

:

:

( )

( )

.

)

(

3.

...

. ...

.

"

"

.

.

:

.

:

.4

:

.

:

.

.

:(

)

.

.

)

(

)

.

....

(

:

.

.

:

( )

.



5.

:

( )

-  
-  
-  
-  
-

:

:

)

:

(

( )



### الفصل الثالث

:

**1.3**

	2009		5,241.3	
2008	2009	%7.4		
	1,415.7			
				.%4.4
5,716.7				
	1,544.1		2008	%5.7
		7,682.6		%2.7
			2008	%7.5
	2,075.1		2008	%32.2
				.%10.2
				:
				)
(				
				%21.2
				%14.3
		%5.1		%10.3
.				

: (2009 ، 2008)

2004

2009	2008	2009	2008	2009	2008	
8.0	7.7	4.9	5.3	5.6	5.9	*
7.9	10.6	16.1	17.2	14.3	15.6	
3.3	3.5	8.6	7.4	7.4	6.4	
8.2	7.3	10.9	11.1	10.3	10.2	
1.0	0.7	9.1	9.1	7.3	7.1	
3.5	3.7	5.6	6.4	5.1	5.7	
35.4	33.9	17.1	16.5	21.2	20.7	
25.0	22.8	11.3	11.3	14.3	14.0	
7.7	9.8	16.4	15.7	14.5	14.4	
100	100	100	100	100	100	

:(\*)

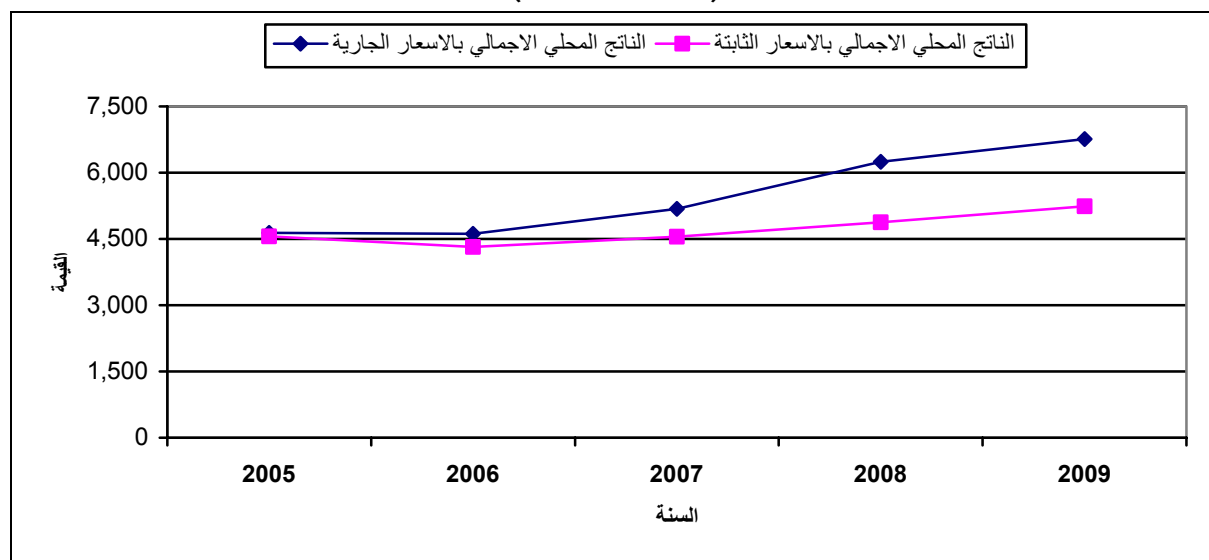
(GDP)

:

(2009 - 2005)

:1

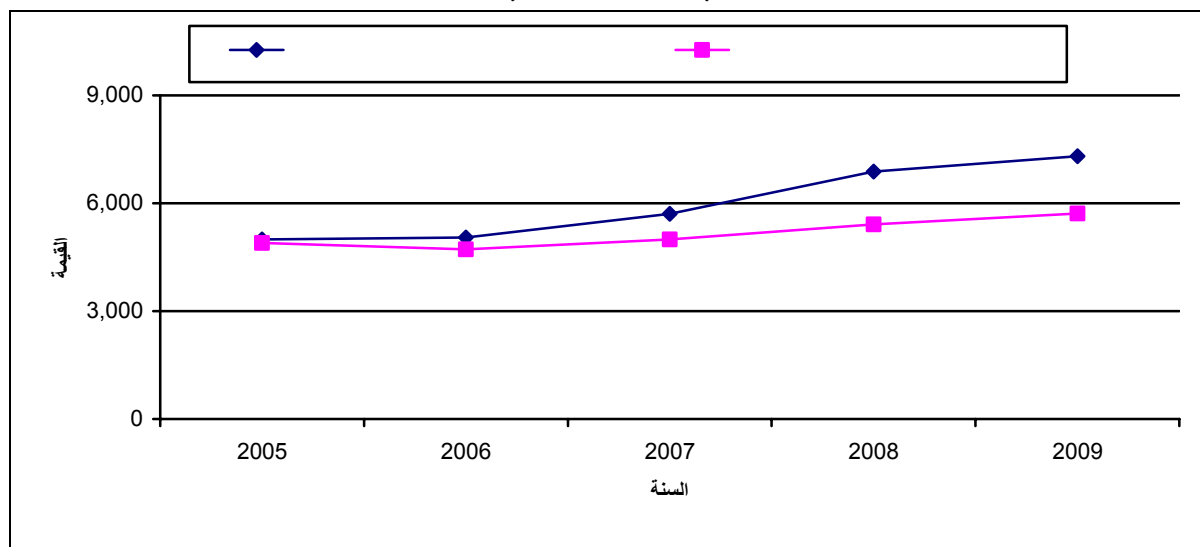
( )



(GNI) :

(2009 -2005) :2

( )

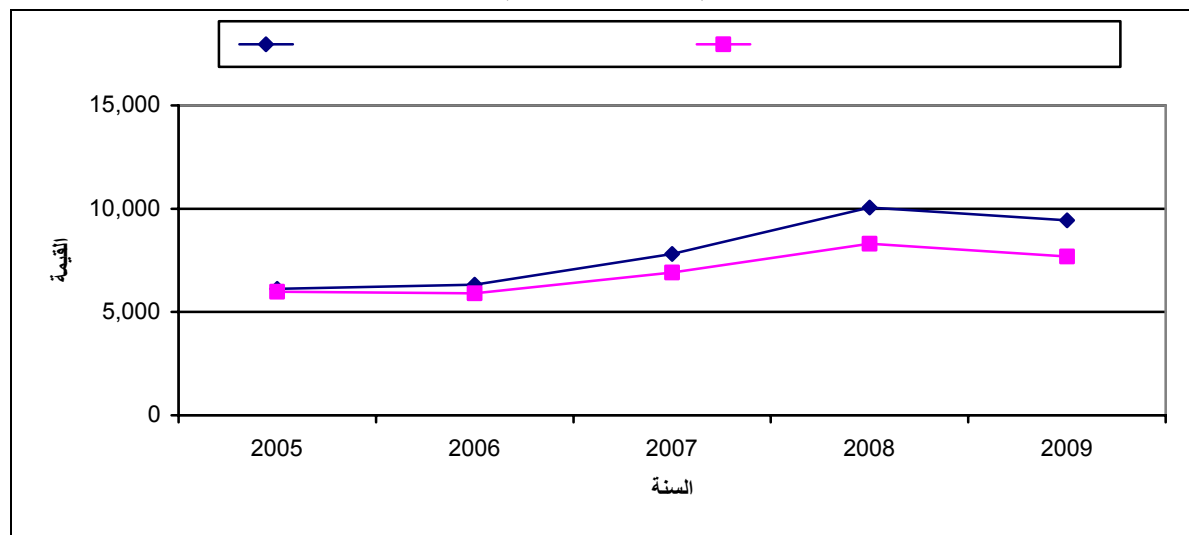


(GDI) :

.2009

(2009 -2005) :3

( )

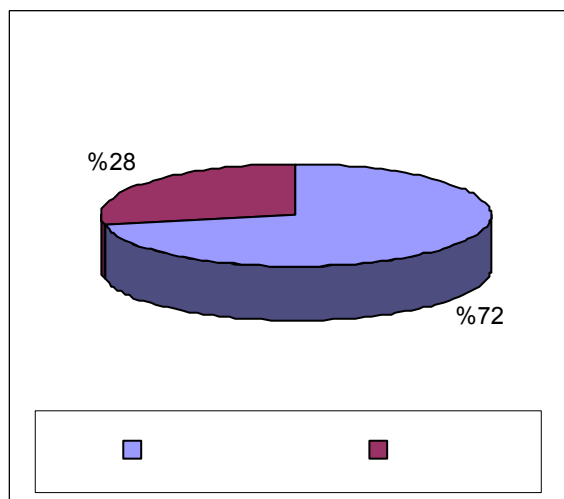
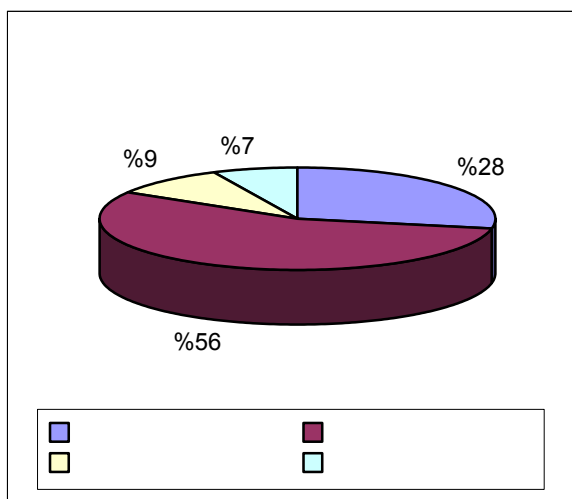


:

:

2009

:4



:

: .1

: ( ) 2009 ,2008

2009	2008	
1,826.9	1,737.0	
1,974.7	1,913.9	
2,549.0	2,796.0	

: .2

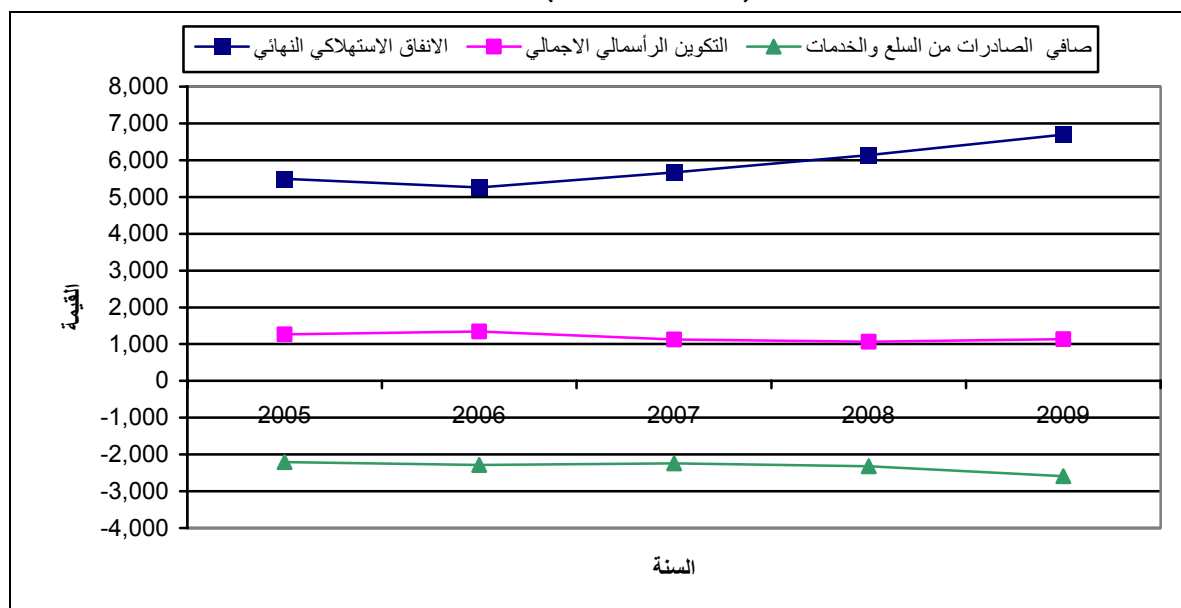
: ( ) 2009 ,2008

2009	2008	
1,415.7	1,356.3	
1,544.1	1,504.1	
2,075.1	2,310.0	

2009 6,696.4 2008 %9.1 5,285.4  
 %78.9 1,137.3 2008 %8.9  
 %7.2  
 2,592.4  
 .%11.7

(2009 -2005) :5

2004 : ( )



2.3 :  
 2009

:(2009 ،2008)

2004

( )

2009	2008	2009	2008	
2,042.9	1,806.5	2,681.1	2,315.0	
343.8	294.6	455.3	409.8	
1,162.8	1,131.5	1,305.4	1,200.5	
296.1	304.8	306.1	384.8	
1,395.7	1,340.9	2,015.7	1,937.2	

.( )





1.4

1.1.4

.( )

:

:

•

.2007

•

•

:

/

2009

(Cost Method)

2.1.4

1.2.1.4

$$\text{Value Added} = \sum P_1.Q_1 - \sum p_2 .q_2$$

**Double Deflation Method** ( )

( P<sub>1</sub>.Q<sub>1</sub>)

( p<sub>2</sub> .q<sub>2</sub>)

2.2.1.4

:

1995

.(1995 ) 1995

1996

2004

.1996

1996

1997

( )

:

:

:

:

.

.

.(100=2004) 2004

SNA93

.

.

:

:

•

.

1998

•

.

•

.

2004

•

.2004

•

2.4

2009

.1993







:

:

( ) : ( )  
.( )

:

1999

:

.( )

**2.5**

( ) ( )







## **Tables**



**(2009 ,2008)**  
**National Accounts Tables at Current Prices**  
**(2008, 2009)**



2009 ,2008

\*

:1-1

**Table 1-1: Percentage contribution to GDP in the Palestinian Territory\* by economic activity for the years 2008, 2009 at current prices**

Economic Activity	2009	2008	
<b>Agriculture and Fishing</b>	<b>5.5</b>	<b>5.7</b>	
<b>Mining, Manufacturing, Electricity. and Water</b>	<b>13.8</b>	<b>14.0</b>	
Mining and Quarrying	0.7	0.6	
Manufacturing	9.9	10.5	
Electricity and Water Supply	3.2	2.9	
<b>Construction</b>	<b>3.9</b>	<b>3.9</b>	
<b>Wholesale and Retail Trade</b>	<b>15.1</b>	<b>14.1</b>	
<b>Transport, Storage and Communications</b>	<b>9.2</b>	<b>9.2</b>	
<b>Financial intermediation</b>	<b>4.0</b>	<b>5.5</b>	
<b>Services</b>	<b>20.5</b>	<b>20.7</b>	
Real estate, Renting and Business Services	6.5	6.4	
Community, Social and Personal Services	2.0	2.0	
Hotels and Restaurants	1.0	1.0	
Education	7.7	7.9	
Health and Social Work	3.3	3.4	
<b>Public Administration and Defense</b>	<b>11.3</b>	<b>11.8</b>	
<b>Households with Employed Persons</b>	<b>0.1</b>	<b>0.1</b>	
<b>Public Owned Enterprises</b>	<b>3.2</b>	<b>2.8</b>	
FISIM	-2.9	-4.4	
Customs Duties	6.9	6.7	
VAT on Imports, net	9.4	9.9	
<b>Total</b>	<b>100</b>	<b>100</b>	

\* The data excludes those parts of Jerusalem which were annexed by Israel in 1967.

\*

.1967

**Table 1-2: Percentage contribution to GDP in the West Bank\* by economic activity for the years 2008, 2009 at current prices**

Economic Activity	2009	2008	
<b>Agriculture and Fishing</b>	<b>4.9</b>	<b>5.0</b>	
<b>Mining, Manufacturing, Electricity. and Water</b>	<b>15.4</b>	<b>15.7</b>	
Mining and Quarrying	0.9	0.8	
Manufacturing	11.9	12.8	
Electricity and Water Supply	2.6	2.1	
<b>Construction</b>	<b>4.3</b>	<b>4.2</b>	
<b>Wholesale and Retail Trade</b>	<b>15.7</b>	<b>14.9</b>	
<b>Transport, Storage and Communications</b>	<b>11.3</b>	<b>11.6</b>	
<b>Financial intermediation</b>	<b>4.3</b>	<b>6.0</b>	
<b>Services</b>	<b>16.4</b>	<b>16.5</b>	
Real estate, Renting and Business Services	5.3	5.3	
Community, Social and Personal Services	2.0	1.9	
Hotels and Restaurants	1.0	1.1	
Education	5.4	5.4	
Health and Social Work	2.7	2.8	
<b>Public Administration and Defense</b>	<b>9.3</b>	<b>9.4</b>	
<b>Households with Employed Persons</b>	<b>0.1</b>	<b>0.1</b>	
<b>Public Owned Enterprises</b>	<b>3.3</b>	<b>2.9</b>	
FISIM	-3.3	-4.8	
Customs Duties	7.8	7.6	
VAT on Imports, net	10.5	10.9	
<b>Total</b>	<b>100</b>	<b>100</b>	

\* The data excludes those parts of Jerusalem which were annexed by Israel in 1967.

\*

.1967



**Table 1-3: Percentage contribution to GDP in Gaza Strip by economic activity for the years 2008, 2009 at current prices**

<b>Economic Activity</b>	<b>2009</b>	<b>2008</b>	
<b>Agriculture and Fishing</b>	<b>8.0</b>	<b>8.0</b>	
<b>Mining, Manufacturing, Electricity. and Water</b>	<b>7.9</b>	<b>8.1</b>	
Mining and Quarrying	0.0	0.0	
Manufacturing	2.5	2.5	
Electricity and Water Supply	5.4	5.6	
<b>Construction</b>	<b>2.4</b>	<b>2.5</b>	
<b>Wholesale and Retail Trade</b>	<b>12.9</b>	<b>11.0</b>	
<b>Transport, Storage and Communications</b>	<b>1.2</b>	<b>0.9</b>	
<b>Financial intermediation</b>	<b>2.9</b>	<b>3.8</b>	
<b>Services</b>	<b>35.9</b>	<b>36.0</b>	
Real estate, Renting and Business Services	11.2	10.3	
Community, Social and Personal Services	1.7	2.5	
Hotels and Restaurants	0.9	0.8	
Education	16.6	16.7	
Health and Social Work	5.5	5.7	
<b>Public Administration and Defense</b>	<b>19.0</b>	<b>19.9</b>	
<b>Households with Employed Persons</b>	<b>0.1</b>	<b>0.0</b>	
<b>Public Owned Enterprises</b>	<b>3.0</b>	<b>2.6</b>	
FISIM	-2.1	-3.0	
Customs Duties	3.6	4.0	
VAT on Imports, net	5.2	6.2	
<b>Total</b>	<b>100</b>	<b>100</b>	

2009 ,2008

\*

:1-2

**Table 2-1: Output in the Palestinian Territory\* by economic activity for the years 2008, 2009 at current prices**

Value In US\$ Million

<b>Economic Activity</b>	<b>2009</b>	<b>2008</b>	
<b>Agriculture and Fishing</b>	<b>766.1</b>	<b>781.1</b>	
<b>Mining, Manufacturing, Electricity. and Water</b>	<b>2,436.4</b>	<b>2,245.9</b>	
Mining and Quarrying	76.4	67.4	
Manufacturing	1,921.1	1,814.6	
Electricity and Water Supply	438.9	363.9	
<b>Construction</b>	<b>684.1</b>	<b>570.4</b>	
<b>Wholesale and Retail Trade</b>	<b>1,363.0</b>	<b>1,203.0</b>	
<b>Transport, Storage and Communications</b>	<b>860.7</b>	<b>817.5</b>	
<b>Financial intermediation</b>	<b>344.7</b>	<b>420.9</b>	
<b>Services</b>	<b>1,733.9</b>	<b>1,614.4</b>	
Real estate, Renting and Business Services	475.2	431.3	
Community, Social and Personal Services	186.9	183.7	
Hotels and Restaurants	138.3	139.3	
Education	602.3	555.8	
Health and Social Work	331.2	304.3	
<b>Public Administration and Defense</b>	<b>1,778.8</b>	<b>1,385.2</b>	
<b>Households with Employed Persons</b>	<b>3.7</b>	<b>3.3</b>	
<b>Public Owned Enterprises</b>	<b>359.1</b>	<b>353.5</b>	
FISIM	0.0	0.0	
Customs Duties	467.2	421.6	
VAT on Imports, net	632.8	616.8	
<b>Gross Output</b>	<b>11,430.5</b>	<b>10,433.6</b>	

\* The data excludes those parts of Jerusalem which were annexed by Israel in 1967.

\*

.1967

2009 ,2008

\*

:2-2

**Table 2-2: Output in the West Bank\* by economic activity for the years 2008, 2009 at current prices**

Value In US\$ Million

<b>Economic Activity</b>	<b>2009</b>	<b>2008</b>	
<b>Agriculture and Fishing</b>	<b>575.7</b>	<b>589.7</b>	
<b>Mining, Manufacturing, Electricity. and Water</b>	<b>2,052.3</b>	<b>1,882.4</b>	
Mining and Quarrying	76.4	67.4	
Manufacturing	1,761.8	1,659.0	
Electricity and Water Supply	214.1	156.0	
<b>Construction</b>	<b>630.8</b>	<b>519.1</b>	
<b>Wholesale and Retail Trade</b>	<b>1,102.6</b>	<b>984.0</b>	
<b>Transport, Storage and Communications</b>	<b>828.3</b>	<b>788.6</b>	
<b>Financial intermediation</b>	<b>292.2</b>	<b>356.7</b>	
<b>Services</b>	<b>1,091.7</b>	<b>1,008.7</b>	
Real estate, Renting and Business Services	308.8	281.1	
Community, Social and Personal Services	150.6	135.2	
Hotels and Restaurants	103.2	107.7	
Education	329.6	292.5	
Health and Social Work	199.5	192.2	
<b>Public Administration and Defense</b>	<b>1,049.8</b>	<b>829.2</b>	
<b>Households with Employed Persons</b>	<b>1.6</b>	<b>3.3</b>	
<b>Public Owned Enterprises</b>	<b>287.3</b>	<b>282.8</b>	
FISIM	0.0	0.0	
Customs Duties	415.3	365.4	
VAT on Imports, net	559.4	530.1	
<b>Gross Output</b>	<b>8,887.0</b>	<b>8,140.0</b>	

\* The data excludes those parts of Jerusalem which were annexed by Israel in 1967.

\*

.1967

**Table 2-3: Output in Gaza Strip by economic activity for the years 2008, 2009 at current prices**

Value In US\$ Million

<b>Economic Activity</b>	<b>2009</b>	<b>2008</b>	
<b>Agriculture and Fishing</b>	<b>190.4</b>	<b>191.4</b>	
<b>Mining, Manufacturing, Electricity. and Water</b>	<b>384.1</b>	<b>363.5</b>	
Mining and Quarrying	0.0	0.0	
Manufacturing	159.3	155.6	
Electricity and Water Supply	224.8	207.9	
<b>Construction</b>	<b>53.3</b>	<b>51.3</b>	
<b>Wholesale and Retail Trade</b>	<b>260.4</b>	<b>219.0</b>	
<b>Transport, Storage and Communications</b>	<b>32.4</b>	<b>28.9</b>	
<b>Financial intermediation</b>	<b>52.5</b>	<b>64.2</b>	
<b>Services</b>	<b>642.2</b>	<b>605.7</b>	
Real estate, Renting and Business Services	166.4	150.2	
Community, Social and Personal Services	36.3	48.5	
Hotels and Restaurants	35.1	31.6	
Education	272.7	263.3	
Health and Social Work	131.7	112.1	
<b>Public Administration and Defense</b>	<b>729.0</b>	<b>556.0</b>	
<b>Households with Employed Persons</b>	<b>2.1</b>	<b>0.0</b>	
<b>Public Owned Enterprises</b>	<b>71.8</b>	<b>70.7</b>	
FISIM	0.0	0.0	
Customs Duties	51.9	56.2	
VAT on Imports, net	73.4	86.7	
<b>Gross Output</b>	<b>2,543.5</b>	<b>2,293.6</b>	

2009 :2008

\*

:1-3

**Table 3-1: Intermediate consumption in the Palestinian Territory\* by economic activity for the years 2008, 2009 at current prices**

Value In US\$ Million

Economic Activity	2009	2008	
<b>Agriculture and Fishing</b>	<b>392.3</b>	<b>425.4</b>	
<b>Mining, Manufacturing, Electricity. and Water</b>	<b>1,501.7</b>	<b>1,367.6</b>	
Mining and Quarrying	27.6	27.6	
Manufacturing	1,251.1	1,156.7	
Electricity and Water Supply	223.0	183.3	
<b>Construction</b>	<b>418.5</b>	<b>329.6</b>	
<b>Wholesale and Retail Trade</b>	<b>341.9</b>	<b>323.9</b>	
<b>Transport, Storage and Communications</b>	<b>241.7</b>	<b>241.3</b>	
<b>Financial intermediation</b>	<b>73.9</b>	<b>78.7</b>	
<b>Services</b>	<b>342.1</b>	<b>318.1</b>	
Real estate, Renting and Business Services	34.9	33.5	
Community, Social and Personal Services	53.0	58.0	
Hotels and Restaurants	69.6	74.3	
Education	79.3	62.6	
Health and Social Work	105.3	89.7	
<b>Public Administration and Defense</b>	<b>1,011.7</b>	<b>650.5</b>	
<b>Households with Employed Persons</b>	<b>0.0</b>	<b>0.0</b>	
<b>Public Owned Enterprises</b>	<b>140.5</b>	<b>175.7</b>	
FISIM	202.6	275.5	
Customs Duties	0.0	0.0	
VAT on Imports, net	0.0	0.0	
<b>Gross Intermediate Consumption</b>	<b>4,666.9</b>	<b>4,186.3</b>	

\* The data excludes those parts of Jerusalem which were annexed by Israel in 1967.

\*

.1967

2009 ,2008

\*

:2-3

**Table 3-2: Intermediate consumption in the West Bank\* by economic activity for the years 2008, 2009 at current prices**

Value In US\$ Million

Economic Activity	2009	2008	
<b>Agriculture and Fishing</b>	<b>316.8</b>	<b>344.6</b>	
<b>Mining, Manufacturing, Electricity. and Water</b>	<b>1,230.5</b>	<b>1,115.4</b>	
Mining and Quarrying	27.6	27.6	
Manufacturing	1,127.3	1,035.5	
Electricity and Water Supply	75.6	52.3	
<b>Construction</b>	<b>400.2</b>	<b>312.6</b>	
<b>Wholesale and Retail Trade</b>	<b>267.0</b>	<b>257.1</b>	
<b>Transport, Storage and Communications</b>	<b>227.2</b>	<b>224.2</b>	
<b>Financial intermediation</b>	<b>62.6</b>	<b>66.7</b>	
<b>Services</b>	<b>216.0</b>	<b>210.3</b>	
Real estate, Renting and Business Services	28.7	25.0	
Community, Social and Personal Services	41.6	44.0	
Hotels and Restaurants	48.0	54.1	
Education	44.4	31.1	
Health and Social Work	53.3	56.1	
<b>Public Administration and Defense</b>	<b>555.2</b>	<b>369.7</b>	
<b>Households with Employed Persons</b>	<b>0.0</b>	<b>0.0</b>	
<b>Public Owned Enterprises</b>	<b>112.4</b>	<b>140.6</b>	
FISIM	171.8	233.5	
Customs Duties	0.0	0.0	
VAT on Imports, net	0.0	0.0	
<b>Gross Intermediate Consumption</b>	<b>3,559.7</b>	<b>3,274.7</b>	

\* The data excludes those parts of Jerusalem which were annexed by Israel in 1967.

\*

.1967

2009 ,2008

:3-3

**Table 3-3: Intermediate consumption in Gaza Strip by economic activity for the years 2008, 2009 at current prices**

Value In US\$ Million

<b>Economic Activity</b>	<b>2009</b>	<b>2008</b>	
<b>Agriculture and Fishing</b>	<b>75.5</b>	<b>80.8</b>	
<b>Mining, Manufacturing, Electricity. and Water</b>	<b>271.2</b>	<b>252.2</b>	
Mining and Quarrying	0.0	0.0	
Manufacturing	123.8	121.2	
Electricity and Water Supply	147.4	131.0	
<b>Construction</b>	<b>18.3</b>	<b>17.0</b>	
<b>Wholesale and Retail Trade</b>	<b>74.9</b>	<b>66.8</b>	
<b>Transport, Storage and Communications</b>	<b>14.5</b>	<b>17.1</b>	
<b>Financial intermediation</b>	<b>11.3</b>	<b>12.0</b>	
<b>Services</b>	<b>126.1</b>	<b>107.8</b>	
Real estate, Renting and Business Services	6.2	8.5	
Community, Social and Personal Services	11.4	14.0	
Hotels and Restaurants	21.6	20.2	
Education	34.9	31.5	
Health and Social Work	52.0	33.6	
<b>Public Administration and Defense</b>	<b>456.5</b>	<b>280.8</b>	
<b>Households with Employed Persons</b>	<b>0.0</b>	<b>0.0</b>	
<b>Public Owned Enterprises</b>	<b>28.1</b>	<b>35.1</b>	
FISIM	30.8	42.0	
Customs Duties	0.0	0.0	
VAT on Imports, net	0.0	0.0	
<b>Gross Intermediate Consumption</b>	<b>1,107.2</b>	<b>911.6</b>	

2009 ,2008

\*

:1-4

**Table 4-1: Value added in the Palestinian Territory\* by economic activity for the years 2008, 2009 at current prices**

Value In US\$ Million

<b>Economic Activity</b>	<b>2009</b>	<b>2008</b>	
<b>Agriculture and Fishing</b>	<b>373.8</b>	<b>355.7</b>	
<b>Mining, Manufacturing, Electricity. and Water</b>	<b>934.7</b>	<b>878.3</b>	
Mining and Quarrying	48.8	39.8	
Manufacturing	670.0	657.9	
Electricity and Water Supply	215.9	180.6	
<b>Construction</b>	<b>265.6</b>	<b>240.8</b>	
<b>Wholesale and Retail Trade</b>	<b>1,021.1</b>	<b>879.1</b>	
<b>Transport, Storage and Communications</b>	<b>619.0</b>	<b>576.2</b>	
<b>Financial intermediation</b>	<b>270.8</b>	<b>342.2</b>	
<b>Services</b>	<b>1,391.8</b>	<b>1,296.3</b>	
Real estate, Renting and Business Services	440.3	397.8	
Community, Social and Personal Services	133.9	125.7	
Hotels and Restaurants	68.7	65.0	
Education	523.0	493.2	
Health and Social Work	225.9	214.6	
<b>Public Administration and Defense</b>	<b>767.1</b>	<b>734.7</b>	
<b>Households with Employed Persons</b>	<b>3.7</b>	<b>3.3</b>	
<b>Public Owned Enterprises</b>	<b>218.6</b>	<b>177.8</b>	
FISIM	-202.6	-275.5	
Customs Duties	467.2	421.6	
VAT on Imports, net	632.8	616.8	
<b>Gross Domestic Product</b>	<b>6,763.6</b>	<b>6,247.3</b>	

\* The data excludes those parts of Jerusalem which were annexed by Israel in 1967.

\*

.1967



2009 ,2008

\*

:2-4

**Table 4-2: Value added in the West Bank\* by economic activity for the years 2008, 2009 at current prices**

Value In US\$ Million

<b>Economic Activity</b>	<b>2009</b>	<b>2008</b>	
<b>Agriculture and Fishing</b>	<b>258.9</b>	<b>245.1</b>	
<b>Mining, Manufacturing, Electricity. and Water</b>	<b>821.8</b>	<b>767.0</b>	
Mining and Quarrying	48.8	39.8	
Manufacturing	634.5	623.5	
Electricity and Water Supply	138.5	103.7	
<b>Construction</b>	<b>230.6</b>	<b>206.5</b>	
<b>Wholesale and Retail Trade</b>	<b>835.6</b>	<b>726.9</b>	
<b>Transport, Storage and Communications</b>	<b>601.1</b>	<b>564.4</b>	
<b>Financial intermediation</b>	<b>229.6</b>	<b>290.0</b>	
<b>Services</b>	<b>875.7</b>	<b>798.4</b>	
Real estate, Renting and Business Services	280.1	256.1	
Community, Social and Personal Services	109.0	91.2	
Hotels and Restaurants	55.2	53.6	
Education	285.2	261.4	
Health and Social Work	146.2	136.1	
<b>Public Administration and Defense</b>	<b>494.6</b>	<b>459.5</b>	
<b>Households with Employed Persons</b>	<b>1.6</b>	<b>3.3</b>	
<b>Public Owned Enterprises</b>	<b>174.9</b>	<b>142.2</b>	
FISIM	-171.8	-233.5	
Customs Duties	415.3	365.4	
VAT on Imports, net	559.4	530.1	
<b>Gross Domestic Product</b>	<b>5,327.3</b>	<b>4,865.3</b>	

\* The data excludes those parts of Jerusalem which were annexed by Israel in 1967.

\*

.1967

2009 /2008

:3-4

**Table 4-3: Value added in Gaza Strip by economic activity for the years 2008, 2009 at current prices**

Value In US\$ Million

<b>Economic Activity</b>	<b>2009</b>	<b>2008</b>	
<b>Agriculture and Fishing</b>	<b>114.9</b>	<b>110.6</b>	
<b>Mining, Manufacturing, Electricity. and Water</b>	<b>112.9</b>	<b>111.3</b>	
Mining and Quarrying	0.0	0.0	
Manufacturing	35.5	34.4	
Electricity and Water Supply	77.4	76.9	
<b>Construction</b>	<b>35.0</b>	<b>34.3</b>	
<b>Wholesale and Retail Trade</b>	<b>185.5</b>	<b>152.2</b>	
<b>Transport, Storage and Communications</b>	<b>17.9</b>	<b>11.8</b>	
<b>Financial intermediation</b>	<b>41.2</b>	<b>52.2</b>	
<b>Services</b>	<b>516.1</b>	<b>497.9</b>	
Real estate, Renting and Business Services	160.2	141.7	
Community, Social and Personal Services	24.9	34.5	
Hotels and Restaurants	13.5	11.4	
Education	237.8	231.8	
Health and Social Work	79.7	78.5	
<b>Public Administration and Defense</b>	<b>272.5</b>	<b>275.2</b>	
<b>Households with Employed Persons</b>	<b>2.1</b>	<b>0.0</b>	
<b>Public Owned Enterprises</b>	<b>43.7</b>	<b>35.6</b>	
FISIM	-30.8	-42.0	
Customs Duties	51.9	56.2	
VAT on Imports, net	73.4	86.7	
<b>Gross Domestic Product</b>	<b>1,436.3</b>	<b>1,382.0</b>	

2009 ,2008

\*

:1-5

**Table 5-1: GDP by expenditure in the Palestinian Territory\* for the years 2008, 2009 at current prices**

Value In US\$ Million

Final use	2009	2008	
<b>Final Consumption</b>	<b>8,930.8</b>	<b>8,166.6</b>	
Household final Consumption	7,067.9	6,493.8	
Government final Consumption	1,522.0	1,284.7	
NPISH final Consumption	340.9	388.1	
<b>Gross Capital Formation</b>	<b>1,276.6</b>	<b>1,206.2</b>	
Gross Fixed Capital Formation	1,265.0	1,162.0	
- Buildings	826.6	788.5	-
- Non-buildings	438.4	373.5	-
Changes in Inventories	11.6	44.2	
Acquisitions of Valuables, net	0.0	0.0	
<b>Net Exports of Goods and Services</b>	<b>-3,443.8</b>	<b>-3,125.5</b>	
Exports	918.9	960.0	
- Goods	717.5	769.9	-
- Services	201.4	190.1	-
Imports	4,362.7	4,085.5	
- Goods	3,796.8	3,585.6	-
- Services	565.9	499.9	-
<b>Gross Domestic Product</b>	<b>6,763.6</b>	<b>6,247.3</b>	

\* The data excludes those parts of Jerusalem which were annexed by Israel in 1967.

\*

.1967

2009 ,2008

\*

:2-5

**Table 5-2: GDP by expenditure in the West Bank\* for the years 2008, 2009 at current prices**

Value In US\$ Million

Final use	2009	2008	
<b>Final Consumption</b>	<b>6,890.6</b>	<b>6,115.0</b>	
Household final Consumption	5,604.2	5,069.2	
Government final Consumption	1,082.1	849.6	
NPISH final Consumption	204.3	196.2	
<b>Gross Capital Formation</b>	<b>1,254.2</b>	<b>1,099.9</b>	
Gross Fixed Capital Formation	1,187.4	1,042.2	
- Buildings	760.8	680.4	-
- Non-buildings	426.6	361.8	-
Changes in Inventories	66.8	57.7	
Acquisitions of Valuables, net	0.0	0.0	
<b>Net Exports of Goods and Services</b>	<b>-2,817.5</b>	<b>-2,349.6</b>	
Exports	887.0	929.4	
- Goods	716.9	769.4	-
- Services	170.1	160.0	-
Imports	3,704.5	3,279.0	
- Goods	3,355.0	2,953.6	-
- Services	349.5	325.4	-
<b>Gross Domestic Product</b>	<b>5,327.3</b>	<b>4,865.3</b>	

\* The data excludes those parts of Jerusalem which were annexed by Israel in 1967.

\*

.1967

**Table 5-3: GDP by expenditure in Gaza Strip for the years 2008, 2009 at current prices**

Value In US\$ Million

<b>Final use</b>	<b>2009</b>	<b>2008</b>	
<b>Final Consumption</b>	<b>2,040.2</b>	<b>2,051.6</b>	
Household final Consumption	1,463.7	1,424.6	
Government final Consumption	439.9	435.1	
NPISH final Consumption	136.6	191.9	
<b>Gross Capital Formation</b>	<b>22.4</b>	<b>106.3</b>	
Gross Fixed Capital Formation	77.6	119.8	
- Buildings	65.8	108.1	-
- Non-buildings	11.8	11.7	-
Changes in Inventories	-55.2	-13.5	
Acquisitions of Valuables, net	0.0	0.0	
<b>Net Exports of Goods and Services</b>	<b>-626.3</b>	<b>-775.9</b>	
Exports	31.9	30.6	
- Goods	0.6	0.5	-
- Services	31.3	30.1	-
Imports	658.2	806.5	
- Goods	441.8	632.0	-
- Services	216.4	174.5	-
<b>Gross Domestic Product</b>	<b>1,436.3</b>	<b>1,382.0</b>	

2009 '2008

\*

:1-6

**Table 6-1: Major National Accounts variables for the Palestinian Territory\* for the years 2008, 2009 at current prices**

Value In US\$ Million

Indicator	2009	2008	
<b>Gross Domestic Product (GDP)</b>	<b>6,763.6</b>	<b>6,247.3</b>	
Net factor Income from abroad	547.2	636.5	
- Compensation of Employees, net	465.2	462.7	-
- Property Income, net	82.0	173.8	-
<b>Gross National Income (GNI)</b>	<b>7,310.8</b>	<b>6,883.8</b>	
Net Current Transfers from abroad	2,126.1	3,172.5	
<b>Gross National Disposable Income (GDI)</b>	<b>9,436.9</b>	<b>10,056.3</b>	
Final Consumption	8,930.8	8,166.6	
<b>Savings</b>	<b>506.1</b>	<b>1,889.7</b>	

\* The data excludes those parts of Jerusalem which were annexed by Israel in 1967.

.1967

2009 '2008

\*

:2-6

**Table 6-2: Major National Accounts variables for the West Bank\* for the years 2008, 2009 at current prices**

Value In US\$ Million

Indicator	2009	2008	
<b>Gross Domestic Product (GDP)</b>	<b>5,327.3</b>	<b>4,865.3</b>	
Net factor Income from abroad	457.5	530.5	
- Compensation of Employees, net	403.7	411.2	-
- Property Income, net	53.8	119.3	-
<b>Gross National Income (GNI)</b>	<b>5,784.8</b>	<b>5,395.8</b>	
Net Current Transfers from abroad	1,272.3	1,902.0	
<b>Gross National Disposable Income (GDI)</b>	<b>7,057.1</b>	<b>7,297.8</b>	
Final Consumption	6,890.6	6,115.0	
<b>Savings</b>	<b>166.5</b>	<b>1,182.8</b>	

\* The data excludes those parts of Jerusalem which were annexed by Israel in 1967.

.1967

2009 ,2008

:3-6

**Table 6-3: Major National Accounts variables for Gaza Strip for the years 2008, 2009 at current prices**

Value In US\$ Million

Indicator	2009	2008	
<b>Gross Domestic Product (GDP)</b>	<b>1,436.3</b>	<b>1,382.0</b>	
Net factor Income from abroad	89.7	106.0	
- Compensation of Employees, net	61.5	51.5	-
- Property Income, net	28.2	54.5	-
<b>Gross National Income (GNI)</b>	<b>1,526.0</b>	<b>1,488.0</b>	
Net Current Transfers from abroad	853.8	1,270.5	
<b>Gross National Disposable Income (GDI)</b>	<b>2,379.8</b>	<b>2,758.5</b>	
Final Consumption	2,040.2	2,051.6	
<b>Savings</b>	<b>339.6</b>	<b>706.9</b>	

2009 ,2008

:1-7

**Table 7-1: GDP Per Capita by region for the years 2008, 2009 at current prices**

Value In US\$

Region	2009	2008	
Palestinian Territory*	1,826.9	1,737.0	*
West Bank*	2,404.7	2,256.3	*
Gaza Strip	966.0	959.5	

\* The data excludes those parts of Jerusalem which were annexed by Israel in 1967.

\*

.1967

2009 ,2008

:2-7

**Table 7-2: GNI Per Capita by region for the years 2008, 2009 at current prices**

Value In US\$

Region	2009	2008	
Palestinian Territory*	1,974.7	1,913.9	*
West Bank*	2,611.2	2,502.3	*
Gaza Strip	1,026.4	1,033.1	

\* The data excludes those parts of Jerusalem which were annexed by Israel in 1967.

\*

.1967

2009 ,2008

:3-7

**Table 7-3: GNDI Per Capita by region for the years 2008, 2009 at current prices**

Value In US\$

Region	2009	2008	
Palestinian Territory*	2,549.0	2,796.0	*
West Bank*	3,185.5	3,384.3	*
Gaza Strip	1,600.6	1,915.2	

\* The data excludes those parts of Jerusalem which were annexed by Israel in 1967.

\*

.1967



**(2009 ,2008)**  
**National Accounts Tables at Constant Prices**  
**(2008, 2009)**



2004

**Table 8-1: Percentage contribution to GDP in the Palestinian Territory\* by economic activity for the years 2008, 2009 at constant prices: 2004 is the base year**

Economic Activity	2009	2008	
<b>Agriculture and Fishing</b>	<b>5.6</b>	<b>5.9</b>	
<b>Mining, Manufacturing, Electricity. and Water</b>	<b>14.3</b>	<b>15.6</b>	
Mining and Quarrying	0.4	0.4	
Manufacturing	10.4	11.1	
Electricity and Water Supply	3.5	4.1	
<b>Construction</b>	<b>7.4</b>	<b>6.4</b>	
<b>Wholesale and Retail Trade</b>	<b>10.3</b>	<b>10.2</b>	
<b>Transport, Storage and Communications</b>	<b>7.3</b>	<b>7.1</b>	
<b>Financial intermediation</b>	<b>5.1</b>	<b>5.7</b>	
<b>Services</b>	<b>21.2</b>	<b>20.7</b>	
Real estate, Renting and Business Services	7.8	7.5	
Community, Social and Personal Services	1.7	1.5	
Hotels and Restaurants	0.8	0.7	
Education	8.1	8.2	
Health and Social Work	2.8	2.8	
<b>Public Administration and Defense</b>	<b>14.3</b>	<b>14.0</b>	
<b>Households with Employed Persons</b>	<b>0.1</b>	<b>0.1</b>	
<b>Public Owned Enterprises</b>	<b>2.1</b>	<b>2.6</b>	
FISIM	-4.4	-5.6	
Customs Duties	6.6	6.7	
VAT on Imports, net	10.1	10.6	
<b>Total</b>	<b>100</b>	<b>100</b>	

\* The data excludes those parts of Jerusalem which were annexed by Israel in 1967.

\*

.1967

2004

**Table 8-2: Percentage contribution to GDP in the West Bank\* by economic activity for the years 2008, 2009 at constant prices: 2004 is the base year**

Economic Activity	2009	2008	
<b>Agriculture and Fishing</b>	<b>4.9</b>	<b>5.3</b>	
<b>Mining, Manufacturing, Electricity. and Water</b>	<b>16.1</b>	<b>17.2</b>	
Mining and Quarrying	0.6	0.6	
Manufacturing	12.5	13.8	
Electricity and Water Supply	3.0	2.8	
<b>Construction</b>	<b>8.6</b>	<b>7.4</b>	
<b>Wholesale and Retail Trade</b>	<b>10.9</b>	<b>11.1</b>	
<b>Transport, Storage and Communications</b>	<b>9.1</b>	<b>9.1</b>	
<b>Financial intermediation</b>	<b>5.6</b>	<b>6.4</b>	
<b>Services</b>	<b>17.1</b>	<b>16.5</b>	
Real estate, Renting and Business Services	6.4	6.3	
Community, Social and Personal Services	1.8	1.5	
Hotels and Restaurants	0.8	0.7	
Education	5.7	5.7	
Health and Social Work	2.4	2.3	
<b>Public Administration and Defense</b>	<b>11.3</b>	<b>11.3</b>	
<b>Households with Employed Persons</b>	<b>0.1</b>	<b>0.1</b>	
<b>Public Owned Enterprises</b>	<b>2.2</b>	<b>2.4</b>	
FISIM	-4.9	-6.3	
Customs Duties	7.5	7.7	
VAT on Imports, net	11.5	11.8	
<b>Total</b>	<b>100</b>	<b>100</b>	

\* The data excludes those parts of Jerusalem which were annexed by Israel in 1967.

\*

.1967

2004

**Table 8-3: Percentage contribution to GDP in Gaza Strip by economic activity for the years 2008, 2009 at constant prices: 2004 is the base year**

<b>Economic Activity</b>	<b>2009</b>	<b>2008</b>	
<b>Agriculture and Fishing</b>	<b>8.0</b>	<b>7.7</b>	
<b>Mining, Manufacturing, Electricity. and Water</b>	<b>7.9</b>	<b>10.6</b>	
Mining and Quarrying	0.0	0.0	
Manufacturing	2.4	2.4	
Electricity and Water Supply	5.5	8.2	
<b>Construction</b>	<b>3.3</b>	<b>3.5</b>	
<b>Wholesale and Retail Trade</b>	<b>8.2</b>	<b>7.3</b>	
<b>Transport, Storage and Communications</b>	<b>1.0</b>	<b>0.7</b>	
<b>Financial intermediation</b>	<b>3.5</b>	<b>3.7</b>	
<b>Services</b>	<b>35.4</b>	<b>33.9</b>	
Real estate, Renting and Business Services	12.6	11.2	
Community, Social and Personal Services	1.4	1.8	
Hotels and Restaurants	0.7	0.6	
Education	16.5	16.1	
Health and Social Work	4.2	4.2	
<b>Public Administration and Defense</b>	<b>25.0</b>	<b>22.8</b>	
<b>Households with Employed Persons</b>	<b>0.2</b>	<b>0.0</b>	
<b>Public Owned Enterprises</b>	<b>1.9</b>	<b>3.4</b>	
FISIM	-3.0	-3.7	
Customs Duties	3.3	3.8	
VAT on Imports, net	5.3	6.3	
<b>Total</b>	<b>100</b>	<b>100</b>	

2004 : 2009 ,2008 \* :1-9

**Table 9-1: Output in the Palestinian Territory\* by economic activity for the years 2008, 2009 at constant prices: 2004 is the base year**

Value In US\$ Million

<b>Economic Activity</b>	<b>2009</b>	<b>2008</b>	
<b>Agriculture and Fishing</b>	<b>667.1</b>	<b>635.2</b>	
<b>Mining, Manufacturing, Electricity. and Water</b>	<b>2,015.3</b>	<b>1,897.1</b>	
Mining and Quarrying	48.4	42.3	
Manufacturing	1,574.3	1,495.7	
Electricity and Water Supply	392.6	359.1	
<b>Construction</b>	<b>709.0</b>	<b>630.9</b>	
<b>Wholesale and Retail Trade</b>	<b>806.1</b>	<b>746.2</b>	
<b>Transport, Storage and Communications</b>	<b>499.5</b>	<b>461.1</b>	
<b>Financial intermediation</b>	<b>324.3</b>	<b>317.7</b>	
<b>Services</b>	<b>1,367.6</b>	<b>1,244.6</b>	
Real estate, Renting and Business Services	436.8	396.5	
Community, Social and Personal Services	127.3	125.1	
Hotels and Restaurants	85.7	61.6	
Education	477.0	440.2	
Health and Social Work	240.8	221.2	
<b>Public Administration and Defense</b>	<b>1,125.1</b>	<b>1,013.5</b>	
<b>Households with Employed Persons</b>	<b>4.6</b>	<b>3.7</b>	
<b>Public Owned Enterprises</b>	<b>244.6</b>	<b>251.9</b>	
FISIM	0.0	0.0	
Customs Duties	345.5	328.9	
VAT on Imports, net	529.8	516.4	
<b>Gross Output</b>	<b>8,638.5</b>	<b>8,047.2</b>	

\* The data excludes those parts of Jerusalem which were annexed by Israel in 1967.

\*

.1967

2004 : 2009 ,2008 \* :2-9

**Table 9-2: Output in the West Bank\* by economic activity for the years 2008, 2009 at constant prices: 2004 is the base year**

Value In US\$ Million

Economic Activity	2009	2008	
<b>Agriculture and Fishing</b>	<b>501.3</b>	<b>479.5</b>	
<b>Mining, Manufacturing, Electricity. and Water</b>	<b>1,683.6</b>	<b>1,563.7</b>	
Mining and Quarrying	48.4	42.3	
Manufacturing	1,443.7	1,367.4	
Electricity and Water Supply	191.5	154.0	
<b>Construction</b>	<b>653.8</b>	<b>574.1</b>	
<b>Wholesale and Retail Trade</b>	<b>652.1</b>	<b>610.4</b>	
<b>Transport, Storage and Communications</b>	<b>480.7</b>	<b>444.8</b>	
<b>Financial intermediation</b>	<b>274.9</b>	<b>269.3</b>	
<b>Services</b>	<b>856.5</b>	<b>769.5</b>	
Real estate, Renting and Business Services	283.9	258.4	
Community, Social and Personal Services	102.6	92.1	
Hotels and Restaurants	64.0	47.6	
Education	261.0	231.7	
Health and Social Work	145.0	139.7	
<b>Public Administration and Defense</b>	<b>664.0</b>	<b>606.7</b>	
<b>Households with Employed Persons</b>	<b>2.0</b>	<b>3.7</b>	
<b>Public Owned Enterprises</b>	<b>195.7</b>	<b>175.4</b>	
FISIM	0.0	0.0	
Customs Duties	307.1	285.0	
VAT on Imports, net	468.3	443.8	
<b>Gross Output</b>	<b>6,740.0</b>	<b>6,225.9</b>	

\* The data excludes those parts of Jerusalem which were annexed by Israel in 1967.

\*

.1967

2004

:

2009 ,2008

:3-9

**Table 9-3: Output in Gaza Strip by economic activity for the years 2008, 2009 at constant prices: 2004 is the base year**

Value In US\$ Million

<b>Economic Activity</b>	<b>2009</b>	<b>2008</b>	
<b>Agriculture and Fishing</b>	<b>165.8</b>	<b>155.7</b>	
<b>Mining, Manufacturing, Electricity. and Water</b>	<b>331.7</b>	<b>333.4</b>	
Mining and Quarrying	0.0	0.0	
Manufacturing	130.6	128.3	
Electricity and Water Supply	201.1	205.1	
<b>Construction</b>	<b>55.2</b>	<b>56.8</b>	
<b>Wholesale and Retail Trade</b>	<b>154.0</b>	<b>135.8</b>	
<b>Transport, Storage and Communications</b>	<b>18.8</b>	<b>16.3</b>	
<b>Financial intermediation</b>	<b>49.4</b>	<b>48.4</b>	
<b>Services</b>	<b>511.1</b>	<b>475.1</b>	
Real estate, Renting and Business Services	152.9	138.1	
Community, Social and Personal Services	24.7	33.0	
Hotels and Restaurants	21.7	14.0	
Education	216.0	208.5	
Health and Social Work	95.8	81.5	
<b>Public Administration and Defense</b>	<b>461.1</b>	<b>406.8</b>	
<b>Households with Employed Persons</b>	<b>2.6</b>	<b>0.0</b>	
<b>Public Owned Enterprises</b>	<b>48.9</b>	<b>76.5</b>	
FISIM	0.0	0.0	
Customs Duties	38.4	43.9	
VAT on Imports, net	61.5	72.6	
<b>Gross Output</b>	<b>1,898.5</b>	<b>1,821.3</b>	



: 2009 2008

\*

:1-10

2004

**Table 10-1: Intermediate consumption in the Palestinian Territory\* by economic activity for the years 2008, 2009 at constant prices: 2004 is the base year**

Value In US\$ Million

Economic Activity	2009	2008	
<b>Agriculture and Fishing</b>	<b>373.9</b>	<b>349.1</b>	
<b>Mining, Manufacturing, Electricity. and Water</b>	<b>1,267.6</b>	<b>1,136.0</b>	
Mining and Quarrying	25.8	20.8	
Manufacturing	1,034.5	956.4	
Electricity and Water Supply	207.3	158.8	
<b>Construction</b>	<b>321.3</b>	<b>316.5</b>	
<b>Wholesale and Retail Trade</b>	<b>266.2</b>	<b>248.7</b>	
<b>Transport, Storage and Communications</b>	<b>115.8</b>	<b>115.6</b>	
<b>Financial intermediation</b>	<b>55.2</b>	<b>37.7</b>	
<b>Services</b>	<b>256.5</b>	<b>237.6</b>	
Real estate, Renting and Business Services	29.0	32.9	
Community, Social and Personal Services	38.6	49.6	
Hotels and Restaurants	44.7	27.5	
Education	50.9	41.4	
Health and Social Work	93.3	86.2	
<b>Public Administration and Defense</b>	<b>374.5</b>	<b>328.3</b>	
<b>Households with Employed Persons</b>	<b>0.0</b>	<b>0.0</b>	
<b>Public Owned Enterprises</b>	<b>134.3</b>	<b>124.1</b>	
FISIM	231.9	275.3	
Customs Duties	0.0	0.0	
VAT on Imports, net	0.0	0.0	
<b>Gross Intermediate Consumption</b>	<b>3,397.2</b>	<b>3,168.9</b>	

\* The data excludes those parts of Jerusalem which were annexed by Israel in 1967.

\*

.1967

2004 : 2009 ,2008 \* :2-10

**Table 10-2: Intermediate consumption in the West Bank\* by economic activity for the years 2008, 2009 at constant prices: 2004 is the base year**

Value In US\$ Million

<b>Economic Activity</b>	<b>2009</b>	<b>2008</b>	
<b>Agriculture and Fishing</b>	<b>302.0</b>	<b>282.8</b>	
<b>Mining, Manufacturing, Electricity. and Water</b>	<b>1,028.2</b>	<b>925.6</b>	
Mining and Quarrying	25.8	20.8	
Manufacturing	932.1	856.2	
Electricity and Water Supply	70.3	48.6	
<b>Construction</b>	<b>304.6</b>	<b>300.2</b>	
<b>Wholesale and Retail Trade</b>	<b>207.9</b>	<b>197.4</b>	
<b>Transport, Storage and Communications</b>	<b>108.9</b>	<b>107.4</b>	
<b>Financial intermediation</b>	<b>46.8</b>	<b>32.0</b>	
<b>Services</b>	<b>160.7</b>	<b>156.8</b>	
Real estate, Renting and Business Services	23.9	24.6	
Community, Social and Personal Services	30.3	37.7	
Hotels and Restaurants	30.8	20.0	
Education	28.5	20.6	
Health and Social Work	47.2	53.9	
<b>Public Administration and Defense</b>	<b>205.5</b>	<b>186.6</b>	
<b>Households with Employed Persons</b>	<b>0.0</b>	<b>0.0</b>	
<b>Public Owned Enterprises</b>	<b>107.4</b>	<b>87.2</b>	
FISIM	196.5	233.2	
Customs Duties	0.0	0.0	
VAT on Imports, net	0.0	0.0	
<b>Gross Intermediate Consumption</b>	<b>2,668.5</b>	<b>2,509.2</b>	

\* The data excludes those parts of Jerusalem which were annexed by Israel in 1967.

\*

.1967

2004 : 2009 -2008

:3-10

**Table 10-3: Intermediate consumption in Gaza Strip by economic activity for the years 2008, 2009 at constant prices: 2004 is the base year**

Value In US\$ Million

<b>Economic Activity</b>	<b>2009</b>	<b>2008</b>	
<b>Agriculture and Fishing</b>	<b>71.9</b>	<b>66.3</b>	
<b>Mining, Manufacturing, Electricity. and Water</b>	<b>239.4</b>	<b>210.4</b>	
Mining and Quarrying	0.0	0.0	
Manufacturing	102.4	100.2	
Electricity and Water Supply	137.0	110.2	
<b>Construction</b>	<b>16.7</b>	<b>16.3</b>	
<b>Wholesale and Retail Trade</b>	<b>58.3</b>	<b>51.3</b>	
<b>Transport, Storage and Communications</b>	<b>6.9</b>	<b>8.2</b>	
<b>Financial intermediation</b>	<b>8.4</b>	<b>5.7</b>	
<b>Services</b>	<b>95.8</b>	<b>80.8</b>	
Real estate, Renting and Business Services	5.1	8.3	
Community, Social and Personal Services	8.3	11.9	
Hotels and Restaurants	13.9	7.5	
Education	22.4	20.8	
Health and Social Work	46.1	32.3	
<b>Public Administration and Defense</b>	<b>169.0</b>	<b>141.7</b>	
<b>Households with Employed Persons</b>	<b>0.0</b>	<b>0.0</b>	
<b>Public Owned Enterprises</b>	<b>26.9</b>	<b>36.9</b>	
FISIM	35.4	42.1	
Customs Duties	0.0	0.0	
VAT on Imports, net	0.0	0.0	
<b>Gross Intermediate Consumption</b>	<b>728.7</b>	<b>659.7</b>	

2004 : 2009 ,2008 \* :1-11

**Table 11-1: Value added in the Palestinian Territory\* by economic activity for the years 2008, 2009 at constant prices: 2004 is the base year**

Value In US\$ Million

Economic Activity	2009	2008	
<b>Agriculture and Fishing</b>	<b>293.2</b>	<b>286.1</b>	
<b>Mining, Manufacturing, Electricity. and Water</b>	<b>747.7</b>	<b>761.1</b>	
Mining and Quarrying	22.6	21.5	
Manufacturing	539.8	539.3	
Electricity and Water Supply	185.3	200.3	
<b>Construction</b>	<b>387.7</b>	<b>314.4</b>	
<b>Wholesale and Retail Trade</b>	<b>539.9</b>	<b>497.5</b>	
<b>Transport, Storage and Communications</b>	<b>383.7</b>	<b>345.5</b>	
<b>Financial intermediation</b>	<b>269.1</b>	<b>280.0</b>	
<b>Services</b>	<b>1,111.1</b>	<b>1,007.0</b>	
Real estate, Renting and Business Services	407.8	363.6	
Community, Social and Personal Services	88.7	75.5	
Hotels and Restaurants	41.0	34.1	
Education	426.1	398.8	
Health and Social Work	147.5	135.0	
<b>Public Administration and Defense</b>	<b>750.6</b>	<b>685.2</b>	
<b>Households with Employed Persons</b>	<b>4.6</b>	<b>3.7</b>	
<b>Public Owned Enterprises</b>	<b>110.3</b>	<b>127.8</b>	
FISIM	-231.9	-275.3	
Customs Duties	345.5	328.9	
VAT on Imports, net	529.8	516.4	
<b>Gross Domestic Product</b>	<b>5,241.3</b>	<b>4,878.3</b>	

\* The data excludes those parts of Jerusalem which were annexed by Israel in 1967.

\*

.1967

2004 : 2009 ,2008 \* :2-11

**Table 11-2: Value added in the West Bank\* by economic activity for the years 2008, 2009 at constant prices: 2004 is the base year**

Value In US\$ Million

Economic Activity	2009	2008	
<b>Agriculture and Fishing</b>	<b>199.3</b>	<b>196.7</b>	
<b>Mining, Manufacturing, Electricity. and Water</b>	<b>655.4</b>	<b>638.1</b>	
Mining and Quarrying	22.6	21.5	
Manufacturing	511.6	511.2	
Electricity and Water Supply	121.2	105.4	
<b>Construction</b>	<b>349.2</b>	<b>273.9</b>	
<b>Wholesale and Retail Trade</b>	<b>444.2</b>	<b>413.0</b>	
<b>Transport, Storage and Communications</b>	<b>371.8</b>	<b>337.4</b>	
<b>Financial intermediation</b>	<b>228.1</b>	<b>237.3</b>	
<b>Services</b>	<b>695.8</b>	<b>612.7</b>	
Real estate, Renting and Business Services	260.0	233.8	
Community, Social and Personal Services	72.3	54.4	
Hotels and Restaurants	33.2	27.6	
Education	232.5	211.1	
Health and Social Work	97.8	85.8	
<b>Public Administration and Defense</b>	<b>458.5</b>	<b>420.1</b>	
<b>Households with Employed Persons</b>	<b>2.0</b>	<b>3.7</b>	
<b>Public Owned Enterprises</b>	<b>88.3</b>	<b>88.2</b>	
FISIM	-196.5	-233.2	
Customs Duties	307.1	285.0	
VAT on Imports, net	468.3	443.8	
<b>Gross Domestic Product</b>	<b>4,071.5</b>	<b>3,716.7</b>	

\* The data excludes those parts of Jerusalem which were annexed by Israel in 1967.

\*

.1967

2004 : 2009 +2008

:3-11

**Table 11-3: Value added in Gaza Strip by economic activity for the years 2008, 2009 at constant prices: 2004 is the base year**

Value In US\$ Million

<b>Economic Activity</b>	<b>2009</b>	<b>2008</b>	
<b>Agriculture and Fishing</b>	<b>93.9</b>	<b>89.4</b>	
<b>Mining, Manufacturing, Electricity. and Water</b>	<b>92.3</b>	<b>123.0</b>	
Mining and Quarrying	0.0	0.0	
Manufacturing	28.2	28.1	
Electricity and Water Supply	64.1	94.9	
<b>Construction</b>	<b>38.5</b>	<b>40.5</b>	
<b>Wholesale and Retail Trade</b>	<b>95.7</b>	<b>84.5</b>	
<b>Transport, Storage and Communications</b>	<b>11.9</b>	<b>8.1</b>	
<b>Financial intermediation</b>	<b>41.0</b>	<b>42.7</b>	
<b>Services</b>	<b>415.3</b>	<b>394.3</b>	
Real estate, Renting and Business Services	147.8	129.8	
Community, Social and Personal Services	16.4	21.1	
Hotels and Restaurants	7.8	6.5	
Education	193.6	187.7	
Health and Social Work	49.7	49.2	
<b>Public Administration and Defense</b>	<b>292.1</b>	<b>265.1</b>	
<b>Households with Employed Persons</b>	<b>2.6</b>	<b>0.0</b>	
<b>Public Owned Enterprises</b>	<b>22.0</b>	<b>39.6</b>	
FISIM	-35.4	-42.1	
Customs Duties	38.4	43.9	
VAT on Imports, net	61.5	72.6	
<b>Gross Domestic Product</b>	<b>1,169.8</b>	<b>1,161.6</b>	

2004 : 2009 ,2008 \* :1-12

**Table 12-1: GDP by expenditure in the Palestinian Territory\* for the years 2008, 2009 at constant prices: 2004 is the base year**

Value In US\$ Million

Final use	2009	2008	
<b>Final Consumption</b>	<b>6,696.4</b>	<b>6,138.7</b>	
Household final Consumption	5,285.4	4,851.9	
Government final Consumption	1,105.5	995.9	
NPISH final Consumption	305.5	290.9	
<b>Gross Capital Formation</b>	<b>1,137.3</b>	<b>1,060.5</b>	
Gross Fixed Capital Formation	1,118.4	1,026.1	
- Buildings	813.1	766.0	-
- Non-buildings	305.3	260.1	-
Changes in Inventories	18.9	34.4	
Acquisitions of Valuables, net	0.0	0.0	
<b>Net Exports of Goods and Services</b>	<b>-2,592.4</b>	<b>-2,320.9</b>	
Exports	822.7	793.0	
- Goods	591.8	595.0	-
- Services	230.9	198.0	-
Imports	3,415.1	3,113.9	
- Goods	2,881.2	2,642.4	-
- Services	533.9	471.5	-
<b>Gross Domestic Product</b>	<b>5,241.3</b>	<b>4,878.3</b>	

\* The data excludes those parts of Jerusalem which were annexed by Israel in 1967.

.1967

\*

2004

:

2009 ,2008

\*

:2-12

**Table 12-2: GDP by expenditure in the West Bank\* for the years 2008, 2009 at constant prices:  
2004 is the base year**

Value In US\$ Million

Final use	2009	2008	
<b>Final Consumption</b>	<b>5,083.7</b>	<b>4,558.9</b>	
Household final Consumption	4,176.2	3,753.2	
Government final Consumption	754.4	658.6	
NPISH final Consumption	153.1	147.1	
<b>Gross Capital Formation</b>	<b>1,088.1</b>	<b>957.8</b>	
Gross Fixed Capital Formation	1,036.2	912.9	
- Buildings	739.1	660.9	-
- Non-buildings	297.1	252.0	-
Changes in Inventories	51.9	44.9	
Acquisitions of Valuables, net	0.0	0.0	
<b>Net Exports of Goods and Services</b>	<b>-2,100.3</b>	<b>-1,800.0</b>	
Exports	786.3	758.0	
- Goods	591.3	594.6	-
- Services	195.0	163.4	-
Imports	2,886.6	2,558.0	
- Goods	2,511.3	2,225.5	-
- Services	375.3	332.5	-
<b>Gross Domestic Product</b>	<b>4,071.5</b>	<b>3,716.7</b>	

\* The data excludes those parts of Jerusalem which were annexed by Israel in 1967.

\*

.1967



2004

:

2009 ,2008

:3-12

**Table 12-3: GDP by expenditure in Gaza Strip for the years 2008, 2009 at constant prices: 2004 is the base year**

Value In US\$ Million

Final use	2009	2008	
<b>Final Consumption</b>	<b>1,612.7</b>	<b>1,579.8</b>	
Household final Consumption	1,109.2	1,098.7	
Government final Consumption	351.1	337.3	
NPISH final Consumption	152.4	143.8	
<b>Gross Capital Formation</b>	<b>49.2</b>	<b>102.7</b>	
Gross Fixed Capital Formation	82.2	113.2	
- Buildings	74.0	105.1	-
- Non-buildings	8.2	8.1	-
Changes in Inventories	-33.0	-10.5	
Acquisitions of Valuables, net	0.0	0.0	
<b>Net Exports of Goods and Services</b>	<b>-492.1</b>	<b>-520.9</b>	
Exports	36.4	35.0	
- Goods	0.5	0.4	-
- Services	35.9	34.6	-
Imports	528.5	555.9	
- Goods	369.9	416.9	-
- Services	158.6	139.0	-
<b>Gross Domestic Product</b>	<b>1,169.8</b>	<b>1,161.6</b>	

2004 : 2009 '2008 \* :1-13

**Table 13-1: Major National Accounts variables for the Palestinian Territory\* for the years 2008, 2009 at constant prices: 2004 is the base year**

Value In US\$ Million

Indicator	2009	2008	
<b>Gross Domestic Product (GDP)</b>	<b>5,241.3</b>	<b>4,878.3</b>	
Net factor Income from abroad	475.4	531.5	
- Compensation of Employees, net	396.0	385.0	-
- Property Income, net	79.4	146.5	-
<b>Gross National Income (GNI)</b>	<b>5,716.7</b>	<b>5,409.8</b>	
Net Current Transfers from abroad	1,965.9	2,898.7	
<b>Gross National Disposable Income (GDI)</b>	<b>7,682.6</b>	<b>8,308.5</b>	
Final Consumption	6,696.4	6,138.7	
<b>Savings</b>	<b>986.2</b>	<b>2,169.8</b>	

\* The data excludes those parts of Jerusalem which were annexed by Israel in 1967.

.1967

\*

2004 : 2009 '2008 \* :2-13

**Table 13-2: Major National Accounts variables for the West Bank\* for the years 2008, 2009 at constant prices: 2004 is the base year**

Value In US\$ Million

Indicator	2009	2008	
<b>Gross Domestic Product (GDP)</b>	<b>4,071.5</b>	<b>3,716.7</b>	
Net factor Income from abroad	395.7	442.7	
- Compensation of Employees, net	343.6	342.1	-
- Property Income, net	52.1	100.6	-
<b>Gross National Income (GNI)</b>	<b>4,467.2</b>	<b>4,159.4</b>	
Net Current Transfers from abroad	1,176.5	1,737.9	
<b>Gross National Disposable Income (GDI)</b>	<b>5,643.7</b>	<b>5,897.3</b>	
Final Consumption	5,083.7	4,558.9	
<b>Savings</b>	<b>560.0</b>	<b>1,338.4</b>	

\* The data excludes those parts of Jerusalem which were annexed by Israel in 1967.

.1967

\*

2004 : 2009 ,2008

:3-13

**Table 13-3: Major National Accounts variables for Gaza Strip for the years 2008, 2009 at constant prices: 2004 is the base year**

Value In US\$ Million

Indicator	2009	2008	
<b>Gross Domestic Product (GDP)</b>	<b>1,169.8</b>	<b>1,161.6</b>	
Net factor Income from abroad	79.7	88.8	
- Compensation of Employees, net	52.4	42.9	-
- Property Income, net	27.3	45.9	-
<b>Gross National Income (GNI)</b>	<b>1,249.5</b>	<b>1,250.4</b>	
Net Current Transfers from abroad	789.4	1,160.8	
<b>Gross National Disposable Income (GDI)</b>	<b>2,038.9</b>	<b>2,411.2</b>	
Final Consumption	1,612.7	1,579.8	
<b>Savings</b>	<b>426.2</b>	<b>831.4</b>	

2004 : 2009 ,2008

:1-14

**Table 14-1: GDP Per Capita by region for the years 2008, 2009 at constant prices: 2004 is the base year**

Value In US\$

Region	2009	2008	
Palestinian Territory*	1,415.7	1,356.3	*
West Bank*	1,837.8	1,723.6	*
Gaza Strip	786.8	806.5	

\* The data excludes those parts of Jerusalem which were annexed by Israel in 1967.

\*

.1967

2004 : 2009 :2008 :2-14

**Table 14-2: GNI Per Capita by region for the years 2008, 2009 at constant prices: 2004 is the base year**

Value In US\$

Region	2009	2008	
Palestinian Territory*	1,544.1	1,504.1	*
West Bank*	2,016.4	1,928.9	*
Gaza Strip	840.4	868.1	

\* The data excludes those parts of Jerusalem which were annexed by Israel in 1967.

\*

.1967

2004 : 2009 :2008 :3-14

**Table 14-3: GNDI Per Capita by region for the years 2008, 2009 at constant prices: 2004 is the base year**

Value In US\$

Region	2009	2008	
Palestinian Territory*	2,075.1	2,310.0	*
West Bank*	2,547.5	2,734.8	*
Gaza Strip	1,084.7	1,096.8	

\* The data excludes those parts of Jerusalem which were annexed by Israel in 1967.

\*

.1967

**(2009 ,2008)**  
**Institutional National Accounts Tables at Current and  
Constant Prices (2008, 2009)**



2009 '2008

**Table 15: Percentage contribution to GDP by economic activity and institutional sector in the Palestinian Territory 2008, 2009 at current prices**

<b>Economic Activity</b>	<b>2009</b>	<b>2008</b>	
<b>Agriculture and Fishing</b>	<b>5.5</b>	<b>5.7</b>	
Households Sector	5.5	5.7	
<b>Mining, Manufacturing, Electricity. and Water</b>	<b>13.8</b>	<b>14.0</b>	
<b>Mining and Quarrying</b>	<b>0.7</b>	<b>0.6</b>	
Households Sector	0.5	0.3	
Non- Financial Enterprises Sector	0.2	0.3	
<b>Manufacturing</b>	<b>9.9</b>	<b>10.5</b>	
Households Sector	4.8	4.2	
NPISH Sector	0.0	0.0	
Non- Financial Enterprises Sector	5.1	6.3	
<b>Electricity and Water Supply</b>	<b>3.2</b>	<b>2.9</b>	
Households Sector	0.3	0.8	
NPISH Sector	0.0	0.0	
Government Sector	1.3	1.2	
Non- Financial Enterprises Sector	1.6	0.9	
<b>Construction</b>	<b>3.9</b>	<b>3.9</b>	
Households Sector	2.8	3.1	
NPISH Sector	0.1	0.0	
Non- Financial Enterprises Sector	1.0	0.8	
<b>Wholesale and Retail Trade</b>	<b>15.1</b>	<b>14.1</b>	
Households Sector	11.1	8.9	
Non- Financial Enterprises Sector	4.0	5.2	
<b>Transport, Storage and Communications</b>	<b>9.2</b>	<b>9.2</b>	
Households Sector	1.6	1.5	
NPISH Sector	0.0	0.0	
Non- Financial Enterprises Sector	7.6	7.7	
<b>Financial Intermediation</b>	<b>4.0</b>	<b>5.5</b>	
Financial Enterprises Sector	4.0	5.5	
<b>Services</b>	<b>20.5</b>	<b>20.7</b>	
<b>Real Estate, Renting and Business Services</b>	<b>6.5</b>	<b>6.4</b>	
Households Sector	5.9	5.7	
NPISH Sector	0.1	0.1	
Non- Financial Enterprises Sector	0.5	0.6	
<b>Community, Social and Personal Services</b>	<b>2.0</b>	<b>2.0</b>	
Households Sector	0.8	0.9	
NPISH Sector	0.9	0.9	
Non- Financial Enterprises Sector	0.3	0.2	
<b>Hotels and Restaurants</b>	<b>1.0</b>	<b>1.0</b>	

2009 ,2008

**Table 15 (Cont.): Percentage contribution to GDP by economic activity and institutional sector in the Palestinian Territory\* 2008, 2009 at current prices**

Economic Activity	2009	2008	
Households Sector	0.6	0.5	
NPISH sector	0.0	0.0	
Non- Financial enterprises sector	0.4	0.5	
<b>Education</b>	<b>7.7</b>	<b>7.9</b>	
Households sector	0.2	0.2	
NPISH sector	3.5	3.5	
Government sector	3.1	3.1	
Non- Financial enterprises sector	0.9	1.1	
<b>Health and social work</b>	<b>3.3</b>	<b>3.4</b>	
Households sector	0.4	0.6	
NPISH sector	1.4	1.4	
Government sector	1.0	1.0	
Non- Financial enterprises sector	0.5	0.4	
<b>Public administration and defense</b>	<b>11.3</b>	<b>11.8</b>	
Government sector	11.3	11.8	
<b>Households with employed persons</b>	<b>0.1</b>	<b>0.1</b>	
Households sector	0.1	0.1	
<b>Public owned Enterprises</b>	<b>3.2</b>	<b>2.8</b>	
Non- Financial enterprises sector	3.2	2.8	
<b>Total by Sectors</b>	<b>86.6</b>	<b>87.8</b>	
<b>Households sector</b>	<b>34.7</b>	<b>32.5</b>	
<b>NPISH sector</b>	<b>5.9</b>	<b>5.9</b>	
<b>Government sector</b>	<b>16.7</b>	<b>17.1</b>	
<b>Financial enterprises sector</b>	<b>4.0</b>	<b>5.5</b>	
<b>Non- Financial enterprises sector</b>	<b>25.3</b>	<b>26.8</b>	
FISIM	-2.9	-4.4	
Customs duties	6.9	6.7	
VAT on imports, net	9.4	9.9	
<b>Total</b>	<b>100.0</b>	<b>100.0</b>	

\* The data excludes those parts of Jerusalem which were annexed by Israel in 1967.

\*

.1967



**Table 16: Output by economic activity and institutional sector in the Palestinian Territory\*  
2008, 2009 at current prices**

Value in US\$ Million

<b>Economic Activity</b>	<b>2009</b>	<b>2008</b>	
<b>Agriculture and Fishing</b>	<b>766.1</b>	<b>781.1</b>	
Households Sector	766.1	781.1	
<b>Mining, Manufacturing, Electricity. and Water</b>	<b>2,436.4</b>	<b>2,245.9</b>	
<b>Mining and Quarrying</b>	<b>76.4</b>	<b>67.4</b>	
Households Sector	37.4	37.7	
Non- Financial Enterprises Sector	39.0	29.7	
<b>Manufacturing</b>	<b>1,921.1</b>	<b>1,814.6</b>	
Households Sector	753.1	624.4	
NPISH Sector	10.7	1.5	
Non- Financial Enterprises Sector	1,157.3	1,188.7	
<b>Electricity and Water Supply</b>	<b>438.9</b>	<b>363.9</b>	
Households Sector	19.1	136.7	
NPISH Sector	0.1	0.0	
Government Sector	147.0	111.8	
Non- Financial Enterprises Sector	272.7	115.4	
<b>Construction</b>	<b>684.1</b>	<b>570.4</b>	
Households Sector	476.4	420.2	
NPISH Sector	5.5	0.0	
Non- Financial Enterprises Sector	202.2	150.2	
<b>Wholesale and Retail Trade</b>	<b>1,363.0</b>	<b>1,203.0</b>	
Households Sector	1,030.3	808.1	
Non- Financial Enterprises Sector	332.7	394.9	
<b>Transport, Storage and Communications</b>	<b>860.7</b>	<b>817.5</b>	
Households Sector	234.0	205.5	
NPISH Sector	0.0	0.0	
Non- Financial Enterprises Sector	626.7	612.0	
<b>Financial Intermediation</b>	<b>344.7</b>	<b>420.9</b>	
Financial Enterprises Sector	344.7	420.9	
<b>Services</b>	<b>1,733.9</b>	<b>1,614.4</b>	
<b>Real Estate, Renting and Business Services</b>	<b>475.2</b>	<b>431.3</b>	
Households Sector	423.4	378.2	
NPISH Sector	6.9	4.5	
Non- Financial Enterprises Sector	44.9	48.6	
<b>Community, Social and Personal Services</b>	<b>186.9</b>	<b>183.7</b>	
Households Sector	74.7	76.8	
NPISH Sector	87.9	86.1	
Non- Financial Enterprises Sector	24.3	20.8	
<b>Hotels and Restaurants</b>	<b>138.3</b>	<b>139.3</b>	

2009 2008

\*

: ( ) 16

**Table 16 (Cont.): Output by economic activity and institutional sector in the Palestinian Territory\*  
2008, 2009 at current prices**

Value in US\$ Million

Economic Activity	2009	2008	
Households Sector	82.2	67.6	
NPISH Sector	5.3	0.2	
Non- Financial Enterprises Sector	50.8	71.5	
<b>Education</b>	<b>602.3</b>	<b>555.8</b>	
Households Sector	19.9	15.8	
NPISH Sector	280.9	257.7	
Government Sector	230.9	209.5	
Non- Financial Enterprises Sector	70.6	72.8	
<b>Health and Social Work</b>	<b>331.2</b>	<b>304.3</b>	
Households Sector	45.0	57.2	
NPISH Sector	156.6	117.3	
Government Sector	92.1	99.5	
Non- Financial Enterprises Sector	37.5	30.3	
<b>Public Administration and Defense</b>	<b>1,778.8</b>	<b>1,385.2</b>	
Government Sector	1,778.8	1,385.2	
<b>Households with Employed Persons</b>	<b>3.7</b>	<b>3.3</b>	
Households Sector	3.7	3.3	
<b>Public Owned Enterprises</b>	<b>359.1</b>	<b>353.5</b>	
Non- Financial Enterprises Sector	359.1	353.5	
<b>Total by Sectors</b>	<b>10,330.5</b>	<b>9,395.2</b>	
<b>Households Sector</b>	<b>3,965.3</b>	<b>3,612.6</b>	
<b>NPISH Sector</b>	<b>553.9</b>	<b>467.3</b>	
<b>Government Sector</b>	<b>2,248.8</b>	<b>1,806.0</b>	
<b>Financial Enterprises Sector</b>	<b>344.7</b>	<b>420.9</b>	
<b>Non- Financial Enterprises Sector</b>	<b>3,217.8</b>	<b>3,088.4</b>	
FISIM	0.0	0.0	
Customs Duties	467.2	421.6	
VAT on Imports, Net	632.8	616.8	
<b>Gross Output</b>	<b>11,430.5</b>	<b>10,433.6</b>	الإنتاج الكلي

\* The data excludes those parts of Jerusalem which were annexed by Israel in 1967.

\*

.1967

**Table 17: Intermediate consumption by economic activity and institutional sector in the Palestinian Territory\* 2008, 2009 at current prices**

Value in US\$ Million

<b>Economic Activity</b>	<b>2009</b>	<b>2008</b>	
<b>Agriculture and Fishing</b>	<b>392.3</b>	<b>425.4</b>	
Households Sector	392.3	425.4	
<b>Mining, Manufacturing, Electricity. and Water</b>	<b>1,501.7</b>	<b>1,367.6</b>	
<b>Mining and Quarrying</b>	<b>27.6</b>	<b>27.6</b>	
Households Sector	5.3	15.5	
Non- Financial Enterprises Sector	22.3	12.1	
<b>Manufacturing</b>	<b>1,251.1</b>	<b>1,156.7</b>	
Households Sector	431.8	361.1	
NPISH Sector	10.0	1.3	
Non- Financial Enterprises Sector	809.3	794.3	
<b>Electricity and Water Supply</b>	<b>223.0</b>	<b>183.3</b>	
Households Sector	3.6	86.1	
NPISH Sector	0.0	0.0	
Government Sector	57.1	37.1	
Non- Financial Enterprises Sector	162.3	60.1	
<b>Construction</b>	<b>418.5</b>	<b>329.6</b>	
Households Sector	279.3	224.8	
NPISH Sector	4.2	0.0	
Non- Financial Enterprises Sector	135.0	104.8	
<b>Wholesale and Retail Trade</b>	<b>341.9</b>	<b>323.9</b>	
Households Sector	279.6	255.3	
Non- Financial Enterprises Sector	62.3	68.6	
<b>Transport, Storage and Communications</b>	<b>241.7</b>	<b>241.3</b>	
Households Sector	129.5	112.9	
NPISH Sector	0.0	0.0	
Non- Financial Enterprises Sector	112.2	128.4	
<b>Financial Intermediation</b>	<b>73.9</b>	<b>78.7</b>	
Financial Enterprises Sector	73.9	78.7	
<b>Services</b>	<b>342.1</b>	<b>318.1</b>	
<b>Real Estate, Renting and Business Services</b>	<b>34.9</b>	<b>33.5</b>	
Households Sector	25.5	19.8	
NPISH Sector	1.3	1.6	
Non- Financial Enterprises Sector	8.1	12.1	
<b>Community, Social and Personal Services</b>	<b>53.0</b>	<b>58.0</b>	
Households Sector	24.2	23.1	
NPISH Sector	23.8	28.1	
Non- Financial Enterprises Sector	5.0	6.8	

**Table 17(Cont.): Intermediate consumption by economic activity and institutional sector in the Palestinian Territory\* 2008, 2009 at current prices**

Value in US\$ Million

<b>Economic Activity</b>	<b>2009</b>	<b>2008</b>	
<b>Hotels and Restaurants</b>	<b>69.6</b>	<b>74.3</b>	
Households Sector	42.6	35.6	
NPISH Sector	2.7	0.3	
Non- Financial Enterprises Sector	24.3	38.4	
<b>Education</b>	<b>79.3</b>	<b>62.6</b>	
Households Sector	7.5	5.2	
NPISH Sector	46.5	34.9	
Government Sector	15.5	15.5	
Non- Financial Enterprises Sector	9.8	7.0	
<b>Health and Social Work</b>	<b>105.3</b>	<b>89.7</b>	
Households Sector	16.9	19.5	
NPISH Sector	55.8	30.2	
Government Sector	25.7	36.1	
Non- Financial Enterprises Sector	6.9	3.9	
<b>Public Administration and Defense</b>	<b>1,011.7</b>	<b>650.5</b>	
Government Sector	1,011.7	650.5	
<b>Households with Employed Persons</b>	<b>0.0</b>	<b>0.0</b>	
Households Sector	0.0	0.0	
<b>Public Owned Enterprises</b>	<b>140.5</b>	<b>175.7</b>	
Non- Financial Enterprises Sector	140.5	175.7	
<b>Total by Sectors</b>	<b>4,464.3</b>	<b>3,910.8</b>	
<b>Households Sector</b>	<b>1,638.1</b>	<b>1,584.3</b>	
<b>NPISH Sector</b>	<b>144.3</b>	<b>96.4</b>	
<b>Government Sector</b>	<b>1,110.0</b>	<b>739.2</b>	
<b>Financial Enterprises Sector</b>	<b>73.9</b>	<b>78.7</b>	
<b>Non- Financial Enterprises Sector</b>	<b>1,498.0</b>	<b>1,412.2</b>	
FISIM	202.6	275.5	
Customs Duties	0.0	0.0	
VAT on Imports, Net	0.0	0.0	
<b>Gross Intermediate Consumption</b>	<b>4,666.9</b>	<b>4,186.3</b>	

\* The data excludes those parts of Jerusalem which were annexed by Israel in 1967.

\*

.1967

**Table 18: Value added by economic activity and institutional sector in the Palestinian Territory\*  
2008, 2009 at current prices**

Value in US\$ Million

<b>Economic Activity</b>	<b>2009</b>	<b>2008</b>	
<b>Agriculture and Fishing</b>	<b>373.8</b>	<b>355.7</b>	
Households Sector	373.8	355.7	
<b>Mining, Manufacturing, Electricity. and Water</b>	<b>934.7</b>	<b>878.3</b>	
<b>Mining and Quarrying</b>	<b>48.8</b>	<b>39.8</b>	
Households Sector	32.1	22.1	
Non- Financial Enterprises Sector	16.7	17.7	
<b>Manufacturing</b>	<b>670.0</b>	<b>657.9</b>	
Households Sector	321.3	263.3	
NPISH Sector	0.7	0.2	
Non- Financial Enterprises Sector	348.0	394.4	
<b>Electricity and Water Supply</b>	<b>215.9</b>	<b>180.6</b>	
Households Sector	15.4	50.6	
NPISH Sector	0.2	0.0	
Government Sector	90.0	74.7	
Non- Financial Enterprises Sector	110.3	55.3	
<b>Construction</b>	<b>265.6</b>	<b>240.8</b>	
Households Sector	195.7	195.4	
NPISH Sector	1.3	0.0	
Non- Financial Enterprises Sector	68.6	45.4	
<b>Wholesale and Retail Trade</b>	<b>1,021.1</b>	<b>879.1</b>	
Households Sector	750.9	553.0	
Non- Financial Enterprises Sector	270.2	326.1	
<b>Transport, Storage and Communications</b>	<b>619.0</b>	<b>576.2</b>	
Households Sector	104.5	92.6	
NPISH Sector	0.0	0.0	
Non- Financial Enterprises Sector	514.5	483.6	
<b>Financial Intermediation</b>	<b>270.8</b>	<b>342.2</b>	
Financial Enterprises Sector	270.8	342.2	
<b>Services</b>	<b>1,391.8</b>	<b>1,296.3</b>	
<b>Real Estate, Renting and Business Services</b>	<b>440.3</b>	<b>397.8</b>	
Households Sector	397.9	358.4	
NPISH Sector	5.7	2.9	
Non- Financial Enterprises Sector	36.7	36.5	
<b>Community, Social and Personal Services</b>	<b>133.9</b>	<b>125.7</b>	
Households Sector	50.5	53.8	
NPISH Sector	64.2	58.0	
Non- Financial Enterprises Sector	19.2	13.9	
<b>Hotels and Restaurants</b>	<b>68.7</b>	<b>65.0</b>	

**Table 18 (Cont.): Value added by economic activity and institutional sector in the Palestinian Territory\* 2008, 2009 at current prices**

Value in US\$ Million

<b>Economic Activity</b>	<b>2009</b>	<b>2008</b>	
Households Sector	39.6	32.0	
NPISH Sector	2.5	0.0	
Non- Financial Enterprises Sector	26.6	33.0	
<b>Education</b>	<b>523.0</b>	<b>493.2</b>	
Households Sector	12.4	10.7	
NPISH Sector	234.4	222.8	
Government Sector	215.4	194.0	
Non- Financial Enterprises Sector	60.8	65.7	
<b>Health and Social Work</b>	<b>225.9</b>	<b>214.6</b>	
Households Sector	28.1	37.8	
NPISH Sector	100.7	87.1	
Government Sector	66.6	63.3	
Non- Financial Enterprises Sector	30.5	26.4	
<b>Public Administration and Defense</b>	<b>767.1</b>	<b>734.7</b>	
Government Sector	767.1	734.7	
<b>Households with Employed Persons</b>	<b>3.7</b>	<b>3.3</b>	
Households Sector	3.7	3.3	
<b>Public Owned Enterprises</b>	<b>218.6</b>	<b>177.8</b>	
Non- Financial Enterprises Sector	218.6	177.8	
<b>Total by Sectors</b>	<b>5,866.2</b>	<b>5,484.4</b>	
<b>Households Sector</b>	<b>2,325.9</b>	<b>2,028.7</b>	
<b>NPISH Sector</b>	<b>409.7</b>	<b>371.0</b>	
<b>Government Sector</b>	<b>1,139.1</b>	<b>1,066.7</b>	
<b>Financial Enterprises Sector</b>	<b>270.8</b>	<b>342.2</b>	
<b>Non- Financial Enterprises Sector</b>	<b>1,720.7</b>	<b>1,675.8</b>	
FISIM	-202.6	-275.5	
Customs Duties	467.2	421.6	
VAT on Imports, Net	632.8	616.8	
<b>Gross Domestic Product</b>	<b>6,763.6</b>	<b>6,247.3</b>	

\* The data excludes those parts of Jerusalem which were annexed by Israel in 1967.

\*

.1967

2004

**Table19: Output by economic activity and institutional sector in the Palestinian Territory\*  
2008, 2009 at constant prices: 2004 is the Base Year**

Value in US\$ Million

Economic Activity	2009	2008	
<b>Agriculture and Fishing</b>	<b>667.1</b>	<b>635.2</b>	
Households Sector	667.1	635.2	
<b>Mining, Manufacturing, Electricity. and Water</b>	<b>2,015.3</b>	<b>1,897.1</b>	
<b>Mining and Quarrying</b>	<b>48.4</b>	<b>42.3</b>	
Households Sector	23.7	23.6	
Non- Financial Enterprises Sector	24.7	18.7	
<b>Manufacturing</b>	<b>1,574.3</b>	<b>1,495.7</b>	
Households Sector	617.2	514.6	
NPISH Sector	8.8	1.3	
Non- Financial Enterprises Sector	948.3	979.8	
<b>Electricity and Water Supply</b>	<b>392.6</b>	<b>359.1</b>	
Households Sector	17.0	127.3	
NPISH Sector	0.2	0.0	
Government Sector	131.5	122.9	
Non- Financial Enterprises Sector	243.9	108.9	
<b>Construction</b>	<b>709.0</b>	<b>630.9</b>	
Households Sector	493.7	464.8	
NPISH Sector	5.8	0.0	
Non- Financial Enterprises Sector	209.5	166.1	
<b>Wholesale and Retail Trade</b>	<b>806.1</b>	<b>746.2</b>	
Households Sector	609.4	501.4	
Non- Financial Enterprises Sector	196.7	244.8	
<b>Transport, Storage and Communications</b>	<b>499.5</b>	<b>461.1</b>	
Households Sector	135.8	115.9	
NPISH Sector	0.0	0.0	
Non- Financial Enterprises Sector	363.7	345.2	
<b>Financial Intermediation</b>	<b>324.3</b>	<b>317.7</b>	
Financial Enterprises Sector	324.3	317.7	
<b>Services</b>	<b>1,367.6</b>	<b>1,244.6</b>	
<b>Real Estate, Renting and Business Services</b>	<b>436.8</b>	<b>396.5</b>	
Households Sector	389.2	347.7	
NPISH Sector	6.4	4.1	
Non- Financial Enterprises Sector	41.2	44.7	
<b>Community, Social and Personal Services</b>	<b>127.3</b>	<b>125.1</b>	
Households Sector	50.9	52.3	
NPISH Sector	59.9	58.6	
Non- Financial Enterprises Sector	16.5	14.2	

: 2009 ,2008

\*

:( ) 19

2004

**Table19 (Cont.): Output by economic activity and institutional sector in the Palestinian Territory\*  
2008, 2009 at constant prices: 2004 is the Base Year**

Value in US\$ Million

<b>Economic Activity</b>	<b>2009</b>	<b>2008</b>	
<b>Hotels and Restaurants</b>	<b>85.7</b>	<b>61.6</b>	
Households Sector	51.0	29.9	
NPISH Sector	3.2	0.1	
Non- Financial Enterprises Sector	31.5	31.6	
<b>Education</b>	<b>477.0</b>	<b>440.2</b>	
Households Sector	15.7	12.6	
NPISH Sector	222.5	204.1	
Government Sector	182.9	165.9	
Non- Financial Enterprises Sector	55.9	57.6	
<b>Health and Social Work</b>	<b>240.8</b>	<b>221.2</b>	
Households Sector	32.7	41.6	
NPISH Sector	113.9	85.3	
Government Sector	67.0	72.3	
Non- Financial Enterprises Sector	27.2	22.0	
<b>Public Administration and Defense</b>	<b>1,125.1</b>	<b>1,013.5</b>	
Government Sector	1,125.1	1,013.5	
<b>Households with Employed Persons</b>	<b>4.6</b>	<b>3.7</b>	
Households Sector	4.6	3.7	
<b>Public owned Enterprises</b>	<b>244.6</b>	<b>251.9</b>	
Non- Financial Enterprises Sector	244.6	251.9	
<b>Total by Sectors</b>	<b>7,763.2</b>	<b>7,201.9</b>	
<b>Households Sector</b>	<b>3,108.0</b>	<b>2,870.6</b>	
<b>NPISH Sector</b>	<b>420.7</b>	<b>353.5</b>	
<b>Government sector</b>	<b>1,506.5</b>	<b>1,374.6</b>	
<b>Financial Enterprises Sector</b>	<b>324.3</b>	<b>317.7</b>	
<b>Non- Financial Enterprises Sector</b>	<b>2,403.7</b>	<b>2,285.5</b>	
FISIM	0.0	0.0	
Customs Duties	345.5	328.9	
VAT on Imports, Net	529.8	516.4	
<b>Gross Output</b>	<b>8,638.5</b>	<b>8,047.2</b>	

\* The data excludes those parts of Jerusalem which were annexed  
by Israel in 1967.

\*

.1967



2004

**Table 20: Intermediate consumption by economic activity and institutional sector in the Palestinian Territory\* 2008, 2009 at constant prices: 2004 is the base year**

Value in US\$ Million

<b>Economic Activity</b>	<b>2009</b>	<b>2008</b>	
<b>Agriculture and Fishing</b>	<b>373.9</b>	<b>349.1</b>	
Households Sector	373.9	349.1	
<b>Mining, Manufacturing, electr. and Water</b>	<b>1,267.6</b>	<b>1,136.0</b>	
<b>Mining and Quarrying</b>	<b>25.8</b>	<b>20.8</b>	
Households Sector	4.9	11.7	
Non- Financial Enterprises Sector	20.9	9.1	
<b>Manufacturing</b>	<b>1,034.5</b>	<b>956.4</b>	
Households Sector	357.0	298.5	
NPISH Sector	8.3	1.1	
Non- Financial Enterprises Sector	669.2	656.8	
<b>Electricity and Water Supply</b>	<b>207.3</b>	<b>158.8</b>	
Households Sector	3.3	72.1	
NPISH Sector	0.0	0.0	
Government Sector	53.1	35.3	
Non- Financial Enterprises Sector	150.9	51.4	
<b>Construction</b>	<b>321.3</b>	<b>316.5</b>	
Households Sector	214.7	215.9	
NPISH Sector	3.2	0.0	
Non- Financial Enterprises Sector	103.4	100.6	
<b>Wholesale and Retail Trade</b>	<b>266.2</b>	<b>248.7</b>	
Households Sector	217.7	196.0	
Non- Financial Enterprises Sector	48.5	52.7	
<b>Transport, Storage and Communications</b>	<b>115.8</b>	<b>115.6</b>	
Households Sector	62.1	54.1	
NPISH Sector	0.0	0.0	
Non- Financial Enterprises Sector	53.7	61.5	
<b>Financial Intermediation</b>	<b>55.2</b>	<b>37.7</b>	
Financial Enterprises Sector	55.2	37.7	
<b>Services</b>	<b>256.5</b>	<b>237.6</b>	
<b>Real Estate, Renting and Business Services</b>	<b>29.0</b>	<b>32.9</b>	
Households Sector	21.1	19.4	
NPISH Sector	1.1	1.6	
Non- Financial Enterprises Sector	6.8	11.9	
<b>Community, Social and Personal Services</b>	<b>38.6</b>	<b>49.6</b>	
Households Sector	17.6	19.8	
NPISH Sector	17.3	24.0	
Non- Financial Enterprises Sector	3.7	5.8	

2009 ,2008

\*

:( ) 20

2004

:

**Table 20 (Cont.): Intermediate consumption by economic activity and institutional sector in the Palestinian Territory\* 2008, 2009 at constant prices: 2004 is the base year**

Value in US\$ Million

Economic Activity	2009	2008	
<b>Hotels and Restaurants</b>	<b>44.7</b>	<b>27.5</b>	
Households sector	27.3	13.3	
NPISH sector	1.8	0.0	
Non- Financial enterprises sector	15.6	14.2	
<b>Education</b>	<b>50.9</b>	<b>41.4</b>	
Households sector	4.8	3.4	
NPISH sector	29.8	23.0	
Government sector	10.0	10.3	
Non- Financial enterprises sector	6.3	4.7	
<b>Health and social work</b>	<b>93.3</b>	<b>86.2</b>	
Households sector	15.0	18.7	
NPISH sector	49.5	29.0	
Government sector	22.7	34.7	
Non- Financial enterprises sector	6.1	3.8	
<b>Public administration and defense</b>	<b>374.5</b>	<b>328.3</b>	
Government sector	374.5	328.3	
<b>Households with employed persons</b>	<b>0.0</b>	<b>0.0</b>	
Households sector	0.0	0.0	
<b>Public owned Enterprises</b>	<b>134.3</b>	<b>124.1</b>	
Non- Financial enterprises sector	134.3	124.1	
<b>Total by Sectors</b>	<b>3,165.3</b>	<b>2,893.6</b>	
<b>Households sector</b>	<b>1,319.4</b>	<b>1,272.0</b>	
<b>NPISH sector</b>	<b>111.0</b>	<b>78.7</b>	
<b>Government sector</b>	<b>460.3</b>	<b>408.6</b>	
<b>Financial enterprises sector</b>	<b>55.2</b>	<b>37.7</b>	
<b>Non- Financial enterprises sector</b>	<b>1,219.4</b>	<b>1,096.6</b>	
FISIM	231.9	275.3	
Customs duties	0.0	0.0	
VAT on imports, net	0.0	0.0	
<b>Gross Intermediate Consumption</b>	<b>3,397.2</b>	<b>3,168.9</b>	

\* The data excludes those parts of Jerusalem which were annexed by Israel in 1967.

\*

.1967

2004

**Table 21: Value added by economic activity and institutional sector in the Palestinian Territory\*  
2008, 2009 at constant prices: 2004 is the base year**

Value in US\$ Million

Economic Activity	2009	2008	
<b>Agriculture and fishing</b>	<b>293.2</b>	<b>286.1</b>	
Households sector	293.2	286.1	
<b>Mining, manufacturing, electr. and water</b>	<b>747.7</b>	<b>761.1</b>	
<b>Mining and quarrying</b>	<b>22.6</b>	<b>21.5</b>	
Households sector	18.8	11.9	
Non- Financial enterprises sector	3.8	9.6	
<b>Manufacturing</b>	<b>539.8</b>	<b>539.3</b>	
Households sector	260.2	216.1	
NPISH sector	0.5	0.2	
Non- Financial enterprises sector	279.1	323.0	
<b>Electricity and water supply</b>	<b>185.3</b>	<b>200.3</b>	
Households sector	13.7	55.2	
NPISH sector	0.2	0.0	
Government sector	78.4	87.6	
Non- Financial enterprises sector	93.0	57.5	
<b>Construction</b>	<b>387.7</b>	<b>314.4</b>	
Households sector	279.0	248.9	
NPISH Sector	2.6	0.0	
Non- Financial enterprises sector	106.1	65.5	
<b>Wholesale and retail trade</b>	<b>539.9</b>	<b>497.5</b>	
Households sector	391.7	305.4	
Non- Financial enterprises sector	148.2	192.1	
<b>Transport, Storage and Communications</b>	<b>383.7</b>	<b>345.5</b>	
Households sector	73.7	61.8	
NPISH sector	0.0	0.0	
Non- Financial enterprises sector	310.0	283.7	
<b>Financial intermediation</b>	<b>269.1</b>	<b>280.0</b>	
Financial enterprises sector	269.1	280.0	
<b>Services</b>	<b>1,111.1</b>	<b>1,007.0</b>	
<b>Real estate, renting and business services</b>	<b>407.8</b>	<b>363.6</b>	
Households sector	368.1	328.3	
NPISH sector	5.3	2.5	
Non- Financial enterprises sector	34.4	32.8	
<b>Community, social and personal services</b>	<b>88.7</b>	<b>75.5</b>	
Households sector	33.3	32.5	
NPISH sector	42.6	34.6	
Non- Financial enterprises sector	12.8	8.4	

2009 ,2008

\*

:( ) 21

2004

:

**Table 21 (Cont.): Value added by economic activity and institutional sector in the Palestinian Territory\* 2008, 2009 at constant prices: 2004 is the base year**

Value in US\$ Million

Economic Activity	2009	2008	
<b>Hotels and restaurants</b>	<b>41.0</b>	<b>34.1</b>	
Households sector	23.7	16.6	
NPISH sector	1.4	0.1	
Non- Financial enterprises sector	15.9	17.4	
<b>Education</b>	<b>426.1</b>	<b>398.8</b>	
Households sector	10.9	9.2	
NPISH sector	192.7	181.1	
Government sector	172.9	155.6	
Non- Financial enterprises sector	49.6	52.9	
<b>Health and social work</b>	<b>147.5</b>	<b>135.0</b>	
Households sector	17.7	22.9	
NPISH sector	64.4	56.3	
Government sector	44.3	37.6	
Non- Financial enterprises sector	21.1	18.2	
<b>Public administration and defense</b>	<b>750.6</b>	<b>685.2</b>	
Government sector	750.6	685.2	
<b>Households with employed persons</b>	<b>4.6</b>	<b>3.7</b>	
Households sector	4.6	3.7	
<b>Public owned Enterprises</b>	<b>110.3</b>	<b>127.8</b>	
Non- Financial enterprises sector	110.3	127.8	
<b>Total by Sectors</b>	<b>4,597.9</b>	<b>4,308.3</b>	
<b>Households sector</b>	<b>1,788.6</b>	<b>1,598.6</b>	
<b>NPISH sector</b>	<b>309.7</b>	<b>274.8</b>	
<b>Government sector</b>	<b>1,046.2</b>	<b>966.0</b>	
<b>Financial enterprises sector</b>	<b>269.1</b>	<b>280.0</b>	
<b>Non- Financial enterprises sector</b>	<b>1,184.3</b>	<b>1,188.9</b>	
FISIM	-231.9	-275.3	
Customs duties	345.5	328.9	
VAT on imports, net	529.8	516.4	
<b>Gross Domestic Product</b>	<b>5,241.3</b>	<b>4,878.3</b>	

\* The data excludes those parts of Jerusalem which were annexed by Israel in 1967.

\*

.1967



**Palestinian National Authority  
Palestinian Central Bureau of Statistics**

**National Accounts at Current  
and Constant Prices (2008, 2009)**

**March, 2011**

PAGE NUMBERS OF ENGLISH TEXT ARE PRINTED IN SQUARE BRACKETS. TABLES ARE PRINTED IN THE ARABIC ORDER (FROM RIGHT TO LEFT).

This document is prepared in accordance with the standard procedures stated in the Code of Practice for Palestine Official Statistics 2006.

© March, 2011.  
All rights reserved.

**Suggested Citation:**

**Palestinian Central Bureau of Statistics, 2011.** *National Accounts at Current and Constant Prices (2008, 2009).* Ramallah - Palestine.

All correspondence should be directed to:  
**Palestinian Central Bureau of Statistics**  
**P.O.Box 1647, Ramallah - Palestine.**

Tel: (972/970) 2 2982700  
Toll free.: 1800300300  
Fax: (972/970) 2 2982710  
E-Mail: [diwan@pcbs.gov.ps](mailto:diwan@pcbs.gov.ps)  
web-site: <http://www.pcbs.gov.ps>

## **Acknowledgement**

**The Palestinian Central Bureau of Statistics (PCBS) extends its deep appreciation to all main official data sources for their important contribution in providing the data needed in the compilation of National Accounts.**

**The National Accounts Report (2008, 2009), has prepared and conducted by a technical team from PCBS and with joint funding by the Palestinian National Authority (PNA), and the Core Funding Group (CFG) for the year 2010 represented by the Representative Office of Norway to PNA and the Swiss Development and Cooperation Agency (SDC).**

**PCBS very much appreciates the distinctive efforts of the Core Funding Group (CFG) for their valuable contribution to prepare this report.**

**Also, PCBS extends its appreciation to the National Accounts Advising Committee represented by academics and economic experts for their efforts in the revision of the National Accounts data.**





## Notice for users

The following notes should be considered by users of this report, which includes the Annual National Accounts, in addition to the Institutional National Accounts:

- Per capita data for the various Macro Economic Indicators based on the estimates of the Population for the years 2008, 2009 which calculated based on the findings of the Population, Housing and Establishment Census 2007.
- National Accounts data at constant prices based on the year 2004 as a base year (2004=100).
- Data at constant prices were compiled based on a set of price deflators that have been converted into US dollar currency. Therefore, it is necessary to take into account the change in exchange rates of the dollar against the Israeli shekel.
- The following table shows the exchange rate (US\$) compared with (NIS) during the years 2008, 2009:

Indicator \ Year	2008	2009
Yearly Average	3.5816	3.9699

<b>CFG:</b>	Core Funding Group
<b>EC:</b>	European Commission
<b>WB:</b>	World Bank
<b>SDC:</b>	Swiss Agency Development and Cooperation
<b>GDP:</b>	Gross Domestic Product
<b>GNI:</b>	Gross National Income
<b>GNDI:</b>	Gross National Disposable Income
<b>PCBS:</b>	Palestinian Central Bureau of Statistics
<b>PECS:</b>	Palestinian Expenditure and Consumption Survey
<b>PNA:</b>	Palestinian National Authority
<b>SNA93:</b>	System of National Accounts 1993
<b>G.F.C.F:</b>	Gross Fixed Capital Formation
<b>PMA:</b>	Palestinian Monetary Authority
<b>NIS:</b>	New Israeli Shekel
<b>NA:</b>	National Accounts
<b>NPISH:</b>	Non-Profit Institutions Serving Households
<b>QNA:</b>	Quarterly National Accounts
<b>INA:</b>	Institutional National Accounts
<b>VAT:</b>	Value Added Tax
<b>WPI:</b>	Wholesale Price Index
<b>PPI:</b>	Producer Price Index
<b>CPI:</b>	Consumer Price Index
<b>UNRWA:</b>	United Nations Relief and Works Agency



## **Team Work**

- **Report Preparation**

Amina Khasib

Amneh Al Natshah

Ahmad Omar

Rania Abughaboush

Hasan Dwekat

- **Graphic Design**

Ahmad Sawalmeh

- **Dissemination Standards**

Hanan Janajreh

- **Preliminary Review**

Ibrahim Al Tarsha

Saleh Al Kafri

Jawad Al-Saleh

Mahmoud Al Qayya

- **Final Review**

Mahmoud Jaradat

- **Overall Supervision**

Ola Awad

President of PCBS



## **Preface**

The compilation of National Accounts (NA) in any country is considered the peak of efforts exerted toward developing a contemporary integrated economic statistical system. Therefore, the provision of basic data needed for NA is a major goal to be targeted when launching the various economic statistical programmes.

National Accounts of any country are supposed to give both systematic statistical description of the economy as a whole and a quite detailed map of the transactions between the various parts of the economy and with the rest of the world. In order to be able to measure the growth rates and the economic trends from year to year, and to monitor the performance of the economy and its cycle within a time series, it becomes necessary to have a systematic time series and a comprehensive framework for the data at current and constant prices needed for the compilation of national accounts for the purposes of comparisons and economic analyses.

Since its establishment in 1993, PCBS has adopted the SNA'1993 as a comprehensive framework guiding all statistical efforts in the economic field. National accounts were issued for the years 1994-2008, in addition to the institutional National Accounts for the years 1997-2008.

PCBS is pleased to issue the main results for the National Accounts at Current and Constant Prices for the Year 2009 and the first revision for 2008 data. This report includes basically the main results about Gross Domestic Product at Current and Constant Prices by production and expenditure sides and by region. This report includes data for Gross National income, Gross Disposable income, related Per capita indicators and includes the data about the Gross Domestic Product by the Institutional Sector.

**March, 2011**

**Ola Awad  
President of PCBS**



## Table of Contents

Subject	Page
List of Tables	
List of Figures	
Executive Summary	
Chapter One: <b>Introduction</b>	<b>[23]</b>
1.1 Objectives of the National Accounts	[23]
1.2 Report Structure	[24]
Chapter Two: <b>Concepts and Definitions</b>	<b>[25]</b>
Chapter Three: <b>Main Findings</b>	<b>[31]</b>
3.1 Basic National Accounts	[31]
3.2 Institutional National Accounts	[33]
Chapter Four: <b>Methodology</b>	<b>[35]</b>
4.1 Basic National Accounts	[35]
4.1.1 National Accounts at Current Prices	[35]
4.1.2 National Accounts at Constant Prices	[35]
4.2 Institutional National Accounts	[36]
Chapter Five: <b>Data Quality</b>	<b>[37]</b>
5.1 Data Quality	[37]
5.2 Data Reliability	[37]
<b>Tables</b>	<b>51</b>
National Accounts Tables at Current Prices (2008, 2009)	53
National Accounts Tables at Constant Prices (2008, 2009)	73
Institutional National Accounts Tables at Current and Constant Prices (2008, 2009)	93





## List of Tables

### National Accounts Tables at Current Prices (2008, 2009)

Table	Page
<b>Table 1-1:</b> Percentage contribution to GDP in the Palestinian Territory by economic activity for the years 2008, 2009 at current prices	<b>55</b>
<b>Table 1-2:</b> Percentage contribution to GDP in the West Bank by economic activity for the years 2008, 2009 at current prices	<b>56</b>
<b>Table 1-3:</b> Percentage contribution to GDP in Gaza Strip by economic activity for the years 2008, 2009 at current prices	<b>57</b>
<b>Table 2-1:</b> Output in the Palestinian Territory by economic activity for the years 2008, 2009 at current prices	<b>58</b>
<b>Table 2-2:</b> Output in the West Bank by economic activity for the years 2008, 2009 at current prices	<b>59</b>
<b>Table 2-3:</b> Output in Gaza Strip by economic activity for the years 2008, 2009 at current prices	<b>60</b>
<b>Table 3-1:</b> Intermediate consumption in the Palestinian Territory by economic activity for the years 2008, 2009 at current prices	<b>61</b>
<b>Table 3-2:</b> Intermediate consumption in the West Bank by economic activity for the years 2008, 2009 at current prices	<b>62</b>
<b>Table 3-3:</b> Intermediate consumption in Gaza Strip by economic activity for the years 2008, 2009 at current prices	<b>63</b>
<b>Table 4-1:</b> Value added in the Palestinian Territory by economic activity for the years 2008, 2009 at current prices	<b>64</b>
<b>Table 4-2:</b> Value added in the West Bank by economic activity for the years 2008, 2009 at current prices	<b>65</b>
<b>Table 4-3:</b> Value added in Gaza Strip by economic activity for the years 2008, 2009 at current prices	<b>66</b>
<b>Table 5-1:</b> GDP by expenditure in the Palestinian Territory for the years 2008, 2009 at current prices	<b>67</b>
<b>Table 5-2:</b> GDP by expenditure in the West Bank for the years 2008, 2009 at current prices	<b>68</b>
<b>Table 5-3:</b> GDP by expenditure in Gaza Strip for the years 2008, 2009 at current prices	<b>69</b>
<b>Table 6-1:</b> Major national accounts variables for the Palestinian Territory for the years 2008, 2009 at current prices	<b>70</b>
<b>Table 6-2:</b> Major national accounts variables for the West Bank for the years 2008, 2009 at current prices	<b>70</b>
<b>Table 6-3:</b> Major national accounts variables for Gaza Strip for the years 2008, 2009 at current prices	<b>71</b>
<b>Table 7-1:</b> GDP per capita by region for the years 2008, 2009 at current prices	<b>71</b>

<b>Table</b>		<b>Page</b>
<b>Table 7-2:</b>	GNI Per Capita by Region for the Years 2008, 2009 at Current Prices	<b>72</b>
<b>Table 7-3:</b>	GNDI Per Capita by Region for the Years 2008, 2009 at Current Prices	<b>72</b>

### **National Accounts Tables at Constant Prices (2008, 2009)**

<b>Table 8-1:</b>	Percentage contribution to GDP in the Palestinian Territory by economic activity for the years 2008, 2009 at constant prices: 2004 is the base year	<b>75</b>
<b>Table 8-2:</b>	Percentage contribution to GDP in the West Bank by economic activity for the years 2008, 2009 at constant prices: 2004 is the base year	<b>76</b>
<b>Table 8-3:</b>	Percentage contribution to GDP in Gaza Strip by economic activity for the years 2008, 2009 at constant prices: 2004 is the base year	<b>77</b>
<b>Table 9-1:</b>	Output in the Palestinian Territory by economic activity for the years 2008, 2009 at constant prices: 2004 is the base year	<b>78</b>
<b>Table 9-2:</b>	Output in the West Bank by economic activity for the years 2008, 2009 at constant prices: 2004 is the base year	<b>79</b>
<b>Table 9-3:</b>	Output in Gaza Strip by economic activity for the years 2008, 2009 at constant prices: 2004 is the base year	<b>80</b>
<b>Table 10-1:</b>	Intermediate consumption in the Palestinian Territory by economic activity for the years 2008, 2009 at constant prices: 2004 is the base year	<b>81</b>
<b>Table 10-2:</b>	Intermediate consumption in the West Bank by economic activity for the years 2008, 2009 at constant prices: 2004 is the base year	<b>82</b>
<b>Table 10-3:</b>	Intermediate consumption in Gaza Strip by economic activity for the years 2008, 2009 at constant prices: 2004 is the base year	<b>83</b>
<b>Table 11-1:</b>	Value added in the Palestinian Territory by economic activity for the years 2008, 2009 at constant prices: 2004 is the base year	<b>84</b>
<b>Table 11-2:</b>	Value added in the West Bank by economic activity for the years 2008, 2009 at constant prices: 2004 is the base year	<b>85</b>
<b>Table 11-3:</b>	Value added in Gaza Strip by economic activity for the years 2008, 2009 at constant prices: 2004 is the base year	<b>86</b>
<b>Table 12-1:</b>	GDP by expenditure in the Palestinian Territory for the years 2008, 2009 at constant prices: 2004 is the base year	<b>87</b>
<b>Table 12-2:</b>	GDP by expenditure in the West Bank for the years 2008, 2009 at constant prices: 2004 is the base year	<b>88</b>
<b>Table 12-3:</b>	GDP by expenditure in Gaza Strip for the years 2008, 2009 at constant prices: 2004 is the base year	<b>89</b>
<b>Table 13-1:</b>	Major national accounts variables for the Palestinian Territory for the years 2008, 2009 at constant prices: 2004 is the base year	<b>90</b>

<b>Table 13-2:</b>	Major national accounts variables for the West Bank for the years 2008, 2009 at constant prices: 2004 is the base year	<b>90</b>
<b>Table 13-3:</b>	Major national accounts variables for Gaza Strip for the years 2008, 2009 at constant prices: 2004 is the base year	<b>91</b>
<b>Table 14-1:</b>	GDP per capita by region for the years 2008, 2009 at constant prices: 2004 is the base year	<b>91</b>
<b>Table 14-2:</b>	GNI per capita by region for the years 2008, 2009 at constant prices: 2004 is the base year	<b>92</b>
<b>Table 14-3:</b>	GNDI per capita by region for the years 2008, 2009 at constant prices: 2004 is the base year	<b>92</b>

### **Institutional National Accounts Tables at Current and Constant Prices (2008, 2009)**

<b>Table 15:</b>	Percentage contribution to GDP by economic activity and institutional sector in the Palestinian Territory 2008, 2009 at current prices	<b>95</b>
<b>Table 16:</b>	Output by economic activity and institutional sector in the Palestinian Territory 2008, 2009 at current prices	<b>97</b>
<b>Table 17:</b>	Intermediate consumption by economic activity and institutional sector in the Palestinian Territory 2008, 2009 at current prices	<b>99</b>
<b>Table 18:</b>	Value added by economic activity and institutional sector in the Palestinian Territory 2008, 2009 at current prices	<b>101</b>
<b>Table 19:</b>	Output by economic activity and institutional sector in the Palestinian Territory 2008, 2009 at constant prices: 2004 is the base year	<b>103</b>
<b>Table 20:</b>	Intermediate consumption by economic activity and institutional sector in the Palestinian Territory 2008, 2009 at constant prices: 2004 is the base year	<b>105</b>
<b>Table 21:</b>	Value added by economic activity and institutional sector in the Palestinian Territory 2008, 2009 at constant prices: 2004 is the base year	<b>107</b>



## **List of Figures**

<b>Figure</b>		<b>Page</b>
<b>Figure 1:</b>	Gross domestic product in the Palestinian Territory for the years 2005-2009 at current and constant prices (US\$ million)	<b>32</b>
<b>Figure 2:</b>	The component of GDP by expenditure in the Palestinian Territory for the years 2005-2009 at constant prices (US\$ million): 2004 is the base year	<b>33</b>



## Executive Summary

### Introduction:

National Accounts in many countries perform a double goal: firstly, to assist in controlling economic performance and economic policy through an analysis of current economic reaction between different economic sectors; and, secondly, to use the data in a comprehensive framework feeding in microeconomic models that are used in compiling national budgets and macroeconomic planning and economic forecasting.

National Accounts provide a comprehensive picture of all transactions between periods and of the macroeconomic situation in any country. It consists of a systematic statistical description of the macroeconomic situation and of the relation between different economic sectors within the country, and the macroeconomic relation with the rest of the economic world.

The compilation of National Accounts (NA) in any country is considered to be the peak of efforts toward developing a contemporary integrated economic statistical system. Therefore, providing the basic data needed for NA is a major goal when launching the various economic statistical programmes.

### General Palestinian Economic Performance:

#### 1. Annual National Accounts Indicators:

The findings of the National Accounts data at current and constant prices of the Palestinian economy throughout 2008, 2009 show that the general trend of macroeconomic indicators (Gross Domestic Product, and the Gross National Income) reflects growth. Meanwhile, the Gross National Disposable Income showed a decrease due to the decline in net current transfers from abroad as indicated by the following table.

#### Major National Accounts Indicators in the Palestinian Territory for the Years 2008, 2009 at Current and Constant Prices: 2004 is the base year

(Value In US\$ Million)

Indicator	Current Prices		Constant Prices	
	2008	2009	2008	2009
Gross Domestic Product (GDP)	6,247.3	6,763.6	4,878.3	5,241.3
Gross National Income (GNI)	6,883.8	7,310.8	5,409.8	5,716.7
Gross National Disposable Income (GNDI)	10,056.3	9,436.9	8,308.5	7,682.6
Savings	1,889.7	506.1	2,169.8	986.2

The contribution of the most prominent economic activities of the Gross Domestic Product at constant prices during 2008, 2009 reflect the service nature of the Palestinian economy. The service sector provided the highest contribution to the GDP followed by industrial activities. The activities of the financial intermediation registered the lowest contribution to the GDP in the year 2009.

**Percentage contribution to GDP in the Palestinian Territory by economic activity for the years (2008, 2009) at constant prices: 2004 is the base year**

Economic Activity	2008	2009
Agriculture and fishing	5.9	5.6
Mining, manufacturing, electr. and water	15.6	14.3
Construction	6.4	7.4
Wholesale and retail trade	10.2	10.3
Transport, Storage and Communications	7.1	7.3
Financial intermediation	5.7	5.1
Services	20.7	21.2
Public administration and defense	14.0	14.3
Other *	14.4	14.5
<b>Total</b>	<b>100</b>	<b>100</b>

(\*): Includes Public owned enterprises, Households with employed persons, FISIM, Customs duties and VAT on imports, net.

Indicators of per capita GNI, and GDI at current and constant prices in 2008, 2009 reflect the significant impact (negatively or positively) of net income of non residents and the net current transfers from abroad, as explained in the table below.

**Per capita of GDP, GNI, GNDI in the Palestinian Territory for the years 2008, 2009 at current and constant prices: 2004 is the base year**

(Value In US\$)

Indicator	Current Prices		Constant Prices	
	2008	2009	2008	2009
GDP Per Capita	1,737.0	1,826.9	1,356.3	1,415.7
GNI Per Capita	1,913.9	1,974.7	1,504.1	1,544.1
GNDI Per Capita	2,796.0	2,549.0	2,310.0	2,075.1

**2. Gross Domestic Product in the Palestinian Territory by Institutional Sector for the Years 2008, 2009 at Current and Constant Prices:**

The findings at current and constant prices of the Palestinian economy throughout 2008, 2009 show that the Households sector provided the highest contribution to the GDP followed by the Non-Financial enterprises sector. The financial enterprises sector provided the lowest contribution in the year 2009 at constant prices, according to the table below.



**Gross Domestic Product in the Palestinian Territory by Institutional Sector for the  
Years (2008, 2009) at Current and Constant Prices: 2004 is the Base Year**

(Value In US\$ Million)

Indicator	Current Prices		Constant Prices	
	2008	2009	2008	2009
Households sector	2,315.0	2,681.1	1,806.5	2,042.9
NPISH sector	409.8	455.3	294.6	343.8
Government sector	1,200.5	1,305.4	1,131.5	1,162.8
Financial enterprises sector	384.8	306.1	304.8	296.1
Non- Financial enterprises sector	1,937.2	2,015.7	1,340.9	1,395.7

Includes adjustment items (FISIM, Customs duties, VAT on imports, net).



## Chapter One

### Introduction

The Palestinian Central Bureau of Statistics seeks to develop a contemporary integrated economic statistical system committed to international standards. This makes basic data needed for NA a major goal to be targeted when launching the various economic statistical programs. The compilation of National Accounts (NA) is considered the peak of efforts toward developing Palestine's statistical system; therefore, there is a concentration on the capacity building of PCBS' professional staff to compile national accounts that require scientific and intellectual experience in macroeconomics.

National Accounts in many countries perform a double goal: firstly, to assist in controlling economic performance and economic policy through analysis of current economic reaction between different economic sectors; and, secondly, to use the data in a comprehensive framework feeding in microeconomic models that are used in compiling national budgets and macroeconomic planning and economic forecasting.

The issuance of National Accounts provides a comprehensive picture of all transactions taking place in a specific period of time. National Accounts provides a comprehensive picture of the macro-economy of any State. It is both a systematic statistical description of the whole economy and of the relationships between the various economic sectors and the rest of the world alike. National Accounts are calculated for sectors and activities that are parts of the overall system of national accounting. The present status of accounts is reflected by systematically classified and detailed information in accordance with economic concepts and principles which predict the economic performance of the state.

The process of preparing National Accounts in the Palestinian Territory have developed continuously since the establishment of the Palestinian Central Bureau of Statistics. The first release of National Accounts was in 1994. This report covers national accounts data at current and constant prices for the year 2009 and the first revision for the year 2008, in addition to the compilation of Institutional National Accounts. Methodologies and mechanisms pertaining to the compilation of National Accounts are detailed in the methodology chapter.

Since the beginning of compilation of National Accounts at PCBS, SNA'1993 was adopted as a reference for its preparation. Therefore, the preparation of Palestinian National Accounts did not face a transition process from SNA'1968. SNA'1993 is the latest basic and internationally agreed standards for the preparation of the accounts that are interrelated and consistent for macroeconomic analysis. It provides a set of concepts, definitions and classifications in the context of integrated accounting purposes, designed to provide data necessary for decision-taking, policy-making and economic analysis.

#### 1.1 Objectives of the National Accounts:

##### **National Accounts endeavor to act in response to the following economic question:**

“Who does what, by which means, for what purpose, with whom in exchange for what, with what changes in stocks?” (System of National Accounts SNA 1993). The National Accounts give a coherent overview of the performance of the economy of the country. Using a clearly structured statistical framework, National Accounts provide a detailed picture of the different elements of the economic system and their interaction in relation to the rest of the world.

The system of national accounts provides a set of concepts, definitions and detailed information within a broad accounting framework designed for purposes of policy and decision taking and for measuring the economic performance of the country. Additionally, the system of National Accounts supply economic models with necessary data for budget preparation, total economic planning and economic forecast and analysis.

The National Accounts also provide data used in reports needed for regional and international organizations. As the data is prepared according to international standards, they enable researchers to compare outputs of different countries and evaluate the performance of the domestic economy in relation to other similar economies.

To complement the work in developing a solid database to provide an adequate picture of the Palestinian economy using international recommendations in the compilation of the system of national accounts, PCBS worked on the issuance of national accounts data by institutional sector to create a solid base for studies and economic analysis. National Accounts are considered the reference for compiling institutional national accounts data and the key to any development in the system.

## **1.2 Report Structure:**

The report of National Accounts at current and constant prices for the years 2008, 2009 is divided into several chapters as follows:

**Chapter One:** Includes introduction about national accounts, which contains the goals and overview about Palestinian National Accounts in addition to the report structure.

**Chapter Two:** Presents the most important definitions and concepts in this report with simplified explanation of these terms.

**Chapter Three:** Presents an overview about the main findings extracted from the report.

**Chapter Four:** Presents the methodology for the preparation of National Accounts at current and constant prices and of Institutional National Accounts.

**Chapter Five:** Presents details about the quality of the data.

**Tables:** This report presents the most significant results in the tables at the level of the Palestinian Territory for the basic National Accounts at current and constant prices, and Institutional National Accounts.

## Concepts and Definitions

### Glossary of Terms According to the System of National Accounts (SNA) 1993

#### 1. General terms

##### **Sector:**

The System of National Accounts divides the society into five institutional sectors: the government, non-profit institutions serving households or NPISHs, financial corporations, households, and non-financial corporations. This Report does not show data on the institutional sectors' level; however, most activities can be related to one or two of the mentioned institutional sectors.

Financial corporations: This sector includes main financial corporations such as banks and insurance companies and auxiliary financial activities like currency exchange bureaus that keep complete accounting records of their activities.

Non-financial corporations: This sector includes all other institutional units, which are principally engaged in the production of market goods and services. Producers of this sector are distinguished from the family sector by keeping a complete set of accounts. A large portion of the value added in the rest of the activities is contributed by this sector.

Government: A government is a legal entity established by political processes which have legislative, judicial or executive authority over other institutional units within a given area. The government in Palestine has two levels: local and central. Tables show that a significant portion of the economic activity is linked to the government's sector; it is marked "government services' producers."<sup>1</sup>

Non-profit institutions serving households (NPISHs): They consist of non-profit institutions. Despite the fact that they produce goods and services, NPISHs do not generate profit or income for their units.

Three main groups of NPISHs may be distinguished:

The first group serves the business sector such as chambers of trade and industry, which are classified within the non-financial corporations sector. The second group constitutes part of the government sector such as state-run hospitals. The third type, which aims at serving households, includes professional and trade unions, churches, charitable societies, and privately subsidized organizations.

Household: a household is a small group of persons who share the same living accommodation, who pool some, or all, of their income and wealth and who consume certain types of goods and services collectively, mainly housing and food. Although they are primarily consumer units, households can engage in any kind of economic activity. All economic activities within the production boundaries and carried out by groups that do not keep complete sets of accounts fall within the household sector. The tables include paid work within the household. The family sector takes part in a number of other activities mentioned in the tables such as agriculture and domestic trade.

---

<sup>1</sup> Many countries produce education, health, social, and public services data under this title in accordance with the System of National Accounts.

**Residency:**

Individuals and establishments are residents in a country when they have a center of economic interest in the economic territory of that country. The concept of residence used here is not based on nationality or legal criteria (although it may be similar to concepts of residence).

An individual is said to be resident within the economic territory of a country when such individual maintains a center of economic interest in that territory - that is, when this individual engages, or intends to engage, in economic activities or transactions on a significant scale either indefinitely or over a long period of time, usually interpreted as one year.

The rule excludes students, sick people, and foreign diplomats and international organizations other than country's residents where such institutions exist. Individuals in the three aforementioned groups are considered non-residents in the economy but residents in their own country regardless of the length of the period of their stay.

Establishments are always considered residents in the country where they operate. This is in line with the residency concept, which defines residency as the center of economic activity.

The only exception here is concerning establishments that operate movable equipment such as fishermen who stay in the regional water of a certain country for a limited period in time.

Companies that hold limited contracts are also excluded since they stay for the period of the contract with no intention to extend their stay once the project is over. These companies are considered residents in the economy of the country as long as they do not keep independent accounts of their overseas activities. Otherwise, they are considered residents in the country where they keep independent accounts of their activities and pay taxes and possess permission to operate; then their activity is considered resident in the country in question.

**2. Production concepts:****Production:**

Production is measured during a certain period of time by the value of the final products of goods and services produced by a certain establishment capable of being provided to other units though they can be self-consumed or for the purposes of self gross fixed capital formation. Production includes two categories: Final products and the so-called under-operating products, which means products that take a long time to produce such as livestock and establishment works. The value of the majority of goods can be estimated at the moment the production process is completed. However, the production of some goods may exceed the accounting period (such as the case of under-operating products). The value of such products is estimated and registered during that accounting period as, for example, the case of establishment works and winter crops.

**Production can be classified as follows:**

- **Market outputs:** the goods and services sold at economically significant prices such as most of the goods and services sold at warehouses and retail sale stores.
- **Outputs of private account:** the goods and services consumed at the same production unit such as agricultural products, which are produced and consumed at the same farm.
- **Other non-market outputs:** the goods and services produced by the government or non-profit institutions that are given free-of-charge or for minimal that are not economically significant prices, including educational services provided by the government.

**Financial services:**

The output of financial services can be measured by the total cost of actual and calculated services. This is necessary because financial institutions gain earnings by the difference between interests on loans and deposits. As the calculation of the cost of the actual service is carried out directly, the calculation of the calculated service is more complicated. The calculated cost, (which is called the services of financial intermediation measured indirectly) equals the total of property income payable to financial institutions less gross value of payable interests on these institutions, excluding property income receivable by investment of money of the same institution.

Measuring GDP by using the output or production approach shows the calculated service in minus for an unreal activity in order to avoid duplicated calculation. Since, by definition, cost of calculated service is not separated from payable interests, it is impossible to measure the cost of service from the expenditure side whether concerning establishments or households.

Therefore, cost of calculated service is not included as an expenditure item. Henceforth, the cost of calculated service is shown as intermediate consumption for an unreal activity. This method is used in a number of countries. Since part of the service cost is actually paid by households (whose consumption is classified as final consumption and not intermediate consumption) the assessment of gross intermediate consumption becomes minimally higher than the actual; likewise, the value added becomes a little less than its actual value.

**Insurance services:**

The output of insurance is measured by the value of the actual and calculated cost of the service provided. In the case of other than life insurance (insurance against accidents such as car insurance, fire, and maritime insurance, etc.) the cost of the calculated service equals: the insurance premium with respect to future claims arising from the occurrence of the events specified in the insurance policies during the reference period + the income generated from investing the technical reserves in the reference period – claims payable for the reference period – changes in the actuarial reserves and reserves for profits insurance. Income here refers to property income (the income generated from the financial assets such as interests, shares, and stocks and the non-financial producing assets such as land lease) in addition to earnings on owned items.

Thus, the basic accounting used to estimate the value of the output of insurance services is as follows:

	Total claims due
<i>plus</i>	Change in actuarial and reserves for with-profits insurance
<i>plus</i>	Total actual premiums earned
<i>plus</i>	Total premium supplements
	= Value of the output of insurance services (Page 142 - 6.140)

**Intermediate consumption:**

Intermediate consumption consists of the value of the goods and services consumed as inputs by a process of production. It is measured during a specific period in time in a way similar to measuring production. Intermediate consumption is estimated by purchase price, which is defined as the producers' price plus transportation and wholesale and retail trade margins. The value of the gross intermediate consumption on the level of the total economy is the same whether calculated by purchase or producers' price. However, on the detailed level the two evaluations vary.

**Value added:**

Value added is a central concept of production and refers to the generated value of any unit that carries out any productive activity. Gross value added is defined as the value of gross output less the value of intermediate consumption. The net value added is defined as the gross value less the value of fixed capital consumption. The net value added reflects the performance of the economy in a better way; however, since it is difficult to measure the fixed capital consumption accurately, the concept of gross value added is used more frequently.

Value added at producers' price is the difference between output at producer prices and the value of the intermediate consumption at purchase price plus taxes (less subsidies) on production. However, if taxes and subsidies are excluded, value added will be obtained in basic prices.

**Gross Domestic Product or GDP:**

Gross Domestic Product or GDP is intended to be a measure of the value created by the productive activity of resident institutional units during a certain period in time. Estimate of GDP, like the output and the value added, can vary according to taxes and subsidies taken into consideration. GDP is usually estimated at market prices, producers' prices, or basic prices.

There are three approaches to estimate the GDP: Output or Production approach, Expenditure approach, and Income approach. Output or Production approach measures the GDP as the sum of value added of all economic activities.

Since supply is one of the components of the value added of all goods and services, it must equal the sum of money spent on same goods and services. Therefore, the following must apply:

Gross Domestic Product at market prices = final consumption + gross fixed capital formation + change in the inventory + exports (goods and services) – imports (goods and services).

Also, since income is totally linked to the production process, the gross value added is used as an income on the capital (operating surplus) and employment (compensation of employees) plus paid taxes linked to the production processes less subsidies. Henceforth, the following applies:

GDP at market prices = the compensation of employees (paid by resident producers to resident and non-resident employees) + net operating surplus (paid by institutional units that carry out production activities; residents by definition) + fixed capital consumption + taxes (less subsidies) on production and imports.

**3. Final consumption groups:****Final consumption:**

Households, government, and non-profit institutions carry out the final consumption registered in the National Accounts. Therefore, the establishments' consumption is not considered final consumption since products used in the production process are considered intermediate consumption.

**Households' final consumption** is registered in purchaser price. It consists of expenditure on all goods and services excluding expenditure on building and construction, which are considered gross fixed capital formation for the property owners. Renting accommodation is classified as final consumption spent by households.



**Government and non-profit institutions consumption** is dealt with in the SNA 1993 similarly to the way it was dealt with in SNA 1968; it is measured by output value less sales revenues.

Expenditure of the two sectors can be divided into two types: individual and collective. The first includes spending that benefits individuals on medical services, for instance. Collective expenditure has a public nature such as the government's spending on defense and security.

### **Gross capital formation:**

Gross capital formation can be divided into three components: gross fixed capital formation, change in inventory, and net acquisitions of valuables. Henceforth, gross capital formation (or investment) can be defined as the total value of the three aforementioned components. It is measured at purchase price, as is the case with measuring consumption.

Gross capital formation is the value of what producers own less what they spend on new and used capital goods (including households' expenditure on accommodation where households are, in this sense, producers of accommodation services), in addition to capital improvements on lands and subsoil assets and the cost of property transaction of such assets.<sup>2</sup> Capital goods can be tangible such as houses, equipment, machinery, etc. or intangible such as copyrights, trademarks, computer programs, etc.

Change in the inventory can be measured by the value of the goods entering the inventory less the value of the goods leaving the inventory. Goods must be valued at current prices, i.e., their prices at the time they enter or leave the inventory in order to avoid calculating unreal earnings of ownership. Change in the inventory also includes "under operating products".

### **Exports and imports of goods and services:**

They include trading goods and services among residents and non-residents and selling, barter, and gifts.

## **4. Income components:**

### **Compensation of employees:**

Compensation of employees is the total remuneration, in cash or in kind, including social security contributions, payable by an enterprise to an employee in return for work done by the latter.

### **Tax on a product:**

Taxes are compulsory cash or in kind payments payable by producers to the general government. Taxes on a product consist of taxes on products payable on goods and services at production, sale, or exchange and other taxes payable on production by resident producers as a result of carrying out the production process.

### **Taxes and duties on imports, excluding VAT:**

Taxes and duties on imports consist of taxes on goods and services that become payable at the moment when the goods cross the national or customs frontiers of the economic territory.

---

<sup>2</sup> The definition can be simplified: gross fixed capital formation includes capital improvements of all non-produced assets and the costs of property transaction of all non-produced assets. It also includes tangible non-produced assets, land and subsoil assets, water sources, and non-organic cultivated sources. Non-produced assets include copyrights, rental contracts, and purchasable name of fame. In any case, such deals have not been estimated since they are of a neglected value in Palestine.

Other imports taxes (excluding VAT) include sales tax, excise (imposed on certain goods like tobacco and fuel) and other taxes that can be imposed on services, etc.

**Subsidies on product:**

Subsidies are current unrequited payments that government units make to local producers or importers. They consist of subsidies on products made to each unit of produced goods or services and other subsidies on product made by the government to resident producers as a result of carrying out the production process.

**Property income:**

Property income is the income receivable by the owner of a financial asset or a tangible non-produced asset (such as land) in return for providing funds to, or putting the tangible non-produced asset at, the disposal of another institutional unit.

**Gross National Income<sup>3</sup>:**

GNI (gross national income) measures the gross value of the initial earned income of residents. It is the income incurred by carrying out production activities or by owning financial assets or land or subsoil assets. GNI can be measured by adding the following components:

- Compensations of employees payable to residents
- Operating surplus of production units (residents by definition)
- Taxes on production and imports less governmental subsidies
- Income generated by financial assets, lands, subsoil assets earned by residents

Less:

Income generated by financial assets, lands, subsoil assets paid by residents

GNI can be estimated in a different way by adding the initial income earned by residents less initial income earned by non-residents from the GNI.

**Gross disposable income:**

Gross National Disposable Income measures available income of residents, which can be spent on consumption of goods and services (locally produced or imported goods and services) or for savings. Gross National Disposable Income can be measured by adding the following components:

GNI, current payable current taxes on income and wealth and others payable to residents, residents social security contributions and revenues, net insurance premiums and claims other than life insurance payable to residents, local different transactions, current transactions of non-residents (which can take any of the aforementioned forms)

Less:

The same articles above on payments side.

Gross National Disposable Income can also be measured in a simplified way by adding the net transactions from non residents to the GNI.

---

<sup>3</sup> Formerly known as Gross National Product GNP in SNA 1968 but the term became absolute in SNA 1993.

## Chapter Three

### Main Findings

#### The General Performance of the National Economy:

##### 3.1 Basic National Accounts:

The final findings of the National Accounts at current and constant prices throughout 2009 that covers the Palestinian macroeconomic indicators in this period show general growth in the value of the Gross Domestic Product, GNI indicators. In looking at the Gross Domestic Product in the Palestinian Territory at constant prices, the GDP was US\$ 5,241.3 million during 2009 reflecting an increase of 7.4% compared to the year 2008. GDP per capita reached US\$ 1,415.7 during the year 2009 with an increase of 4.4% compared to the previous year.

##### First: Percentage Contribution to GDP for the Years 2008, 2009:

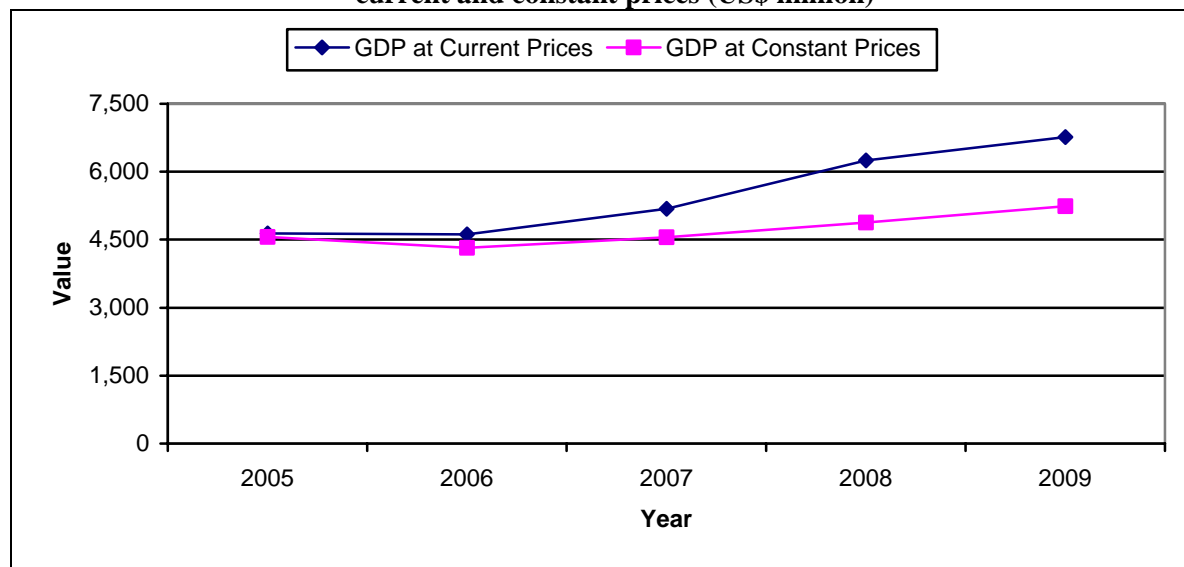
For percentage contribution to GDP by economic activity, it is noticed that the Palestinian economy is service-oriented. The percentage contribution to GDP was 21.2% (which includes real estate, renting and business services, community, social and personal services, hotels and restaurants, education, health and social work) during the year 2009. Mining, manufacturing, electricity and water activities, Public administration and defense activity contributed 14.3% to the GDP for each one; while Wholesale and Retail Trade activity contributed 10.3%. Meanwhile, the activity of Financial intermediation activity formed the lowest contribution which reached 5.1%.

#### Percentage contribution to GDP in the Palestinian Territory by economic activity for the years 2008, 2009 at constant prices: 2004 is the base year

Economic Activity	Palestinian Territory		West Bank		Gaza Strip	
	2008	2009	2008	2009	2008	2009
Agriculture and fishing	5.9	5.6	5.3	4.9	7.7	8.0
Mining, manufacturing, electricity and water	15.6	14.3	17.2	16.1	10.6	7.9
Construction	6.4	7.4	7.4	8.6	3.5	3.3
Wholesale and retail trade	10.2	10.3	11.1	10.9	7.3	8.2
Transport, Storage and Communications	7.1	7.3	9.1	9.1	0.7	1.0
Financial intermediation	5.7	5.1	6.4	5.6	3.7	3.5
Services	20.7	21.2	16.5	17.1	33.9	35.4
Public administration and defense	14.0	14.3	11.3	11.3	22.8	25.0
Other *	14.4	14.5	15.7	16.4	9.8	7.7
<b>Total</b>	<b>100</b>	<b>100</b>	<b>100</b>	<b>100</b>	<b>100</b>	<b>100</b>

**Notes:** (\*): Includes public-owned enterprises, Households with employed persons, FISIM, customs duties and VAT on imports, net.

**Figure 1: Gross domestic product in the Palestinian Territory for the years (2005- 2009) at current and constant prices (US\$ million)**



## Second: Per Capita Indicators:

### 1. At Current Prices:

GDP,GNI,GNDI Per Capita in the Palestinian Territory for the years 2008, 2009 at current prices (US\$) were:

Value in US\$

Indicator	2008	2009
GDP Per Capita	1,737.0	1,826.9
GNI Per Capita	1,913.9	1,974.7
GNDI Per Capita	2,796.0	2,549.0

### 2. At Constant Prices:

GDP,GNI,GNDI Per Capita in the Palestinian Territory for the years 2008, 2009 at constant prices (US\$) were:

Value In US\$

Indicator	2008	2009
GDP Per Capita	1,356.3	1,415.7
GNI Per Capita	1,504.1	1,544.1
GNDI Per Capita	2,310.0	2,075.1

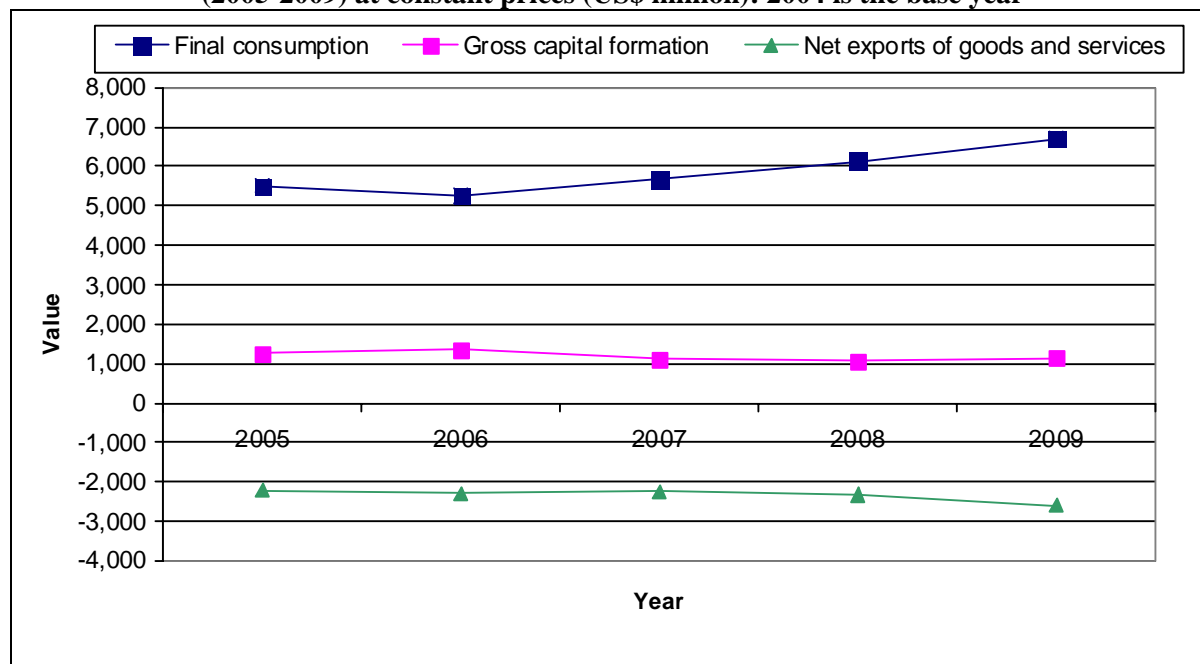
## Third: GDP by Expenditure:

The main findings indicate that final consumption in the Palestinian Territory at constant prices for the year 2009 reached US\$ 6,696.4 million with an increase by 9.1% compared with the previous year. The household final consumption contributed the highest percent with 78.9% during the year 2009 reflecting an increase by 8.9% compared with the year 2008.

The Gross Capital Formation increased by 7.2% in 2009 compared with 2008 to reach US\$ 1,137.3 million. The trade balance recorded a deficit during this period, amounting to US\$ 2,592.4 million which increased by 11.7% compared with the year 2008.

The following figure shows expenditure on GDP in the Palestinian Territory for the years 2008, 2009 at constant prices:

**Figure 2: The components of GDP by expenditure in the Palestinian Territory for the years (2005-2009) at constant prices (US\$ million): 2004 is the base year**



### 3.2 Institutional National Accounts:

The findings of the years 2008, 2009 at constant prices of the Palestinian Territory show that the Households sector provided the highest contribution to the GDP followed by the Non-Financial enterprises sector. The financial enterprises sector provided the lowest contribution in the year 2009 at constant prices, as the table below tells us.

#### Gross Domestic Product in the Palestinian Territory by the Institutional Sector for the Years (2008, 2009) at Current and Constant Prices: 2004 is the Base Year

(Value In US\$ Million)

Indicator	Current Prices		Constant Prices	
	2008	2009	2008	2009
Households sector	2,315.0	2,681.1	1,806.5	2,042.9
NPISH sector	409.8	455.3	294.6	343.8
Government sector	1,200.5	1,305.4	1,131.5	1,162.8
Financial enterprises sector	384.8	306.1	304.8	296.1
Non- Financial enterprises sector	1,937.2	2,015.7	1,340.9	1,395.7

Includes adjustment items (FISIM, Customs duties, VAT on imports, net).



## Chapter Four

### Methodology

This Chapter will present the adopted methodologies for the compilation of the National Accounts at current and constant prices based on the available price deflators. In addition, this section presents the methodologies for compiling both the Institutional National Accounts at current and constant prices.

#### 4.1 Basic National Accounts

##### 4.1.1 National Accounts at Current Prices

###### **The main basis for revision process**

The process of preparing this report was based on many phases which were necessary to have a high coverage for the National Accounts for the period 2008, 2009 based on the following considerations:

- The Dependency on the latest administrative records available from mainly the Government and UNRWA.
- Unifying the methodologies from the various data sources based on the latest one, such as the methodologies for estimating the government production, imputed rent and gross capital formation. The use of latest methodologies contributes to the improvement of the data quality.
- Improving the consistency of the data by checking the framework of the data, such as checking the proportion of inputs to outputs, the value added per employee, in addition to the logic of the growth rates for the output and value added, in addition to the regional distribution for the data.
- Balancing the GDP from both the production and expenditure sides at current prices.
- Verification of the data at current prices after compiling those at constant prices based on the general overview about the performance of the economy.

##### 4.1.2 National Accounts at Constant Prices

The methodology for compiling the National Accounts at constant prices based on a set of price indices and deflators. PCBS produces three types of indices (consumer price index, producer and wholesaler price index) based on the year 2004 as a base year for the CPI, while the year 1997 is the base year for the producer and wholesaler price index.

The process for deflating was two-fold: First step was by compiling the necessary deflators in format and details of the SUT, while in the second step those deflators were used in order to deflate the various transactions in the SUT.

PCBS adopted the double – deflation method in deflating main transactions by using the following indices:

**The following table shows the various indices used to deflate various transactions:**

<b>Transaction</b>	<b>Price Index</b>	<b>Source</b>
<b>Output</b>		
Output from Goods	Pal-PPI	PCBS
Output from Buildings	Special Index based on the components of the output	PCBS
Services	Pal- CPI	PCBS
VAT on Imports	Pal-WPI	PCBS
Imports of goods and services	Residual	
<b>Intermediate Consumption</b>		
From Goods	Pal-WPI	PCBS
From Services	Isr-WPI	Israeli Abstract
<b>Final Consumption</b>		
Household Final Consumption	Pal- CPI	PCBS
Government Final Consumption	Special Index based on the production of Government	PCBS
NPISH Final Consumption	Pal-WPI	PCBS
<b>Gross Capital Formation</b>		
Gross Fixed Capital Formation	Pal-WPI	PCBS
Changes in Inventories	Pal-WPI	PCBS
Exports of goods and services	Pal-PPI	PCBS

#### **4.2 Institutional National Accounts**

The methodology for compiling the Institutional National Accounts is based mainly on the Annual National Accounts. Therefore, the results of this report for the institutional accounts depend on the annual national accounts for the years 2008, 2009 as a basis for the institutional distribution for institutions and based on the recommendations of the SNA' 93.

Two approaches were used to compile the institutional national accounts based on the sources of the data and their particularity.

##### **First approach consists of:**

Agriculture and Fishing:	Classified as Household sector.
Financial Intermediation:	Financial Institutions Sector.
Public Administration and Defence:	Government Sector.
Household Services:	Household Sector.

##### **Second Approach:**

It consists of all activities where data are collected from the economic surveys, and those data were classified by institutional sectors based on the legal entities. A percentage contribution for each sector was used as a basis for distributing the data for each sector.



## Chapter Five

### Data Quality

SNA'1993 was adopted as a reference for the preparation of National Accounts since the establishment of the Palestinian Central Bureau of Statistics. Therefore the preparation of Palestinian national accounts did not face a transition process from the SNA'1968. SNA'1993 is the latest basic and internationally agreed standards for the preparation of the accounts that are interrelated and consistent for macroeconomic analysis. It provides a set of concepts, definitions and classifications in the context of integrated accounting purposes, designed to provide data necessary for decision-taking, policy-making and economic analysis.

#### 5.1 Data Quality

Several procedures were adopted to ensure data quality and coverage in the National Accounts Data which can be summarized in the following:

- Compiling economic surveys covering all activities except agriculture.
- Compiling economic surveys covering the informal sector in construction and transport activities.
- Depending on the Population, Housing and Establishment Census 2007 in preparing the per capita data.
- Compiling the necessary price deflators for compiling the constant prices data.
- Economic surveys results based on the results of the Population, Housing and Establishment census 2007 which provide high coverage for the national accounts indicators which its main source is the economic surveys series.
- Better data coverage for the government data especially for those pertaining to the Custom Duties and the VAT based on the accrual basis.
- Developing the consistency of the data after updating them from different sources and comparing the structure of the data (percent of inputs to outputs, percent of compensation of employees to value added, the logic for the growth rates in production and value added).
- Using the adjustments of the Supply and Use Tables for the years 1997-1998 to compare the consistency of the data.
- Noticeable increase in the main economic indicators related to the electricity activity in the Gaza Strip and that is due to the ability to collect data from the only electricity enterprise there and the data will be revised for all the years.

#### 5.2 Data Reliability

The compilation of National Accounts relies on a system of data sources (surveys and administrative records) that have a high degree of reliability. In addition to that, the process of compilation depends heavily on a computerized system which minimizes the human errors by applying relevant checks.

In addition, data reliability for the economic surveys data were done to ensure consistency of the data, since the reliability in this source depends on the transparencies of the owners of the establishments.