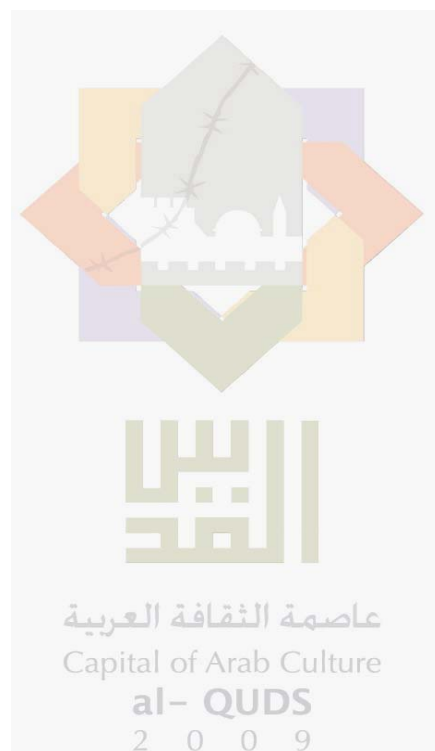
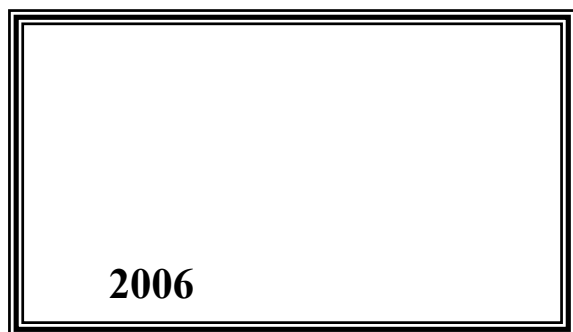


**(2007 -2004)**

**2009 /**



© 1430 – 2009

:

*(2007-2004)*

**.2009**

:

- 1647 . .

: (970/972) 2 242 6340

: (970/972) 2 242 6343

: [diwan@pcbs.gov.ps](mailto:diwan@pcbs.gov.ps)

: <http://www.pcbs.gov.ps>





.

2007-2004

(PNA)

2008

(EU)

(CFG)

.(SDC)

.

.

.

(CFG)



:

2006-2005

•

.2007

2007-2004

•

.2007

•

2004

2007-2005

•

1996

:2007-2004

•

2007	2006	2005	2004	
4.1139	4.4545	4.4849	4.4775	





•

•

•

•

•

.



SNA93

2000-1994

2005-2000

2004

-2004

2007

2006-2005

2007

2004

**2009**



<b>25</b>		:
26	1.1	
26	2.1	
<b>27</b>		:
<b>37</b>		:
37	1.3	
42	2.3	
<b>45</b>		:
45	1.4	
45	1.1.4	
52	2.1.4	
56	2.4	
<b>59</b>		:
59	1.5	
61	2.5	
<b>63</b>		:
<b>69</b>		
<b>71</b>	(2007-2004)	
<b>91</b>	(2007-2004)	
<b>111</b>	(2007-2004)	



**(2007-2004)**

<b>73</b>			<b>:1-1</b>
	2007-2004		
<b>74</b>			<b>:2-1</b>
	2007-2004		
<b>75</b>			<b>:3-1</b>
	2007-2004		
<b>76</b>	-2004		<b>:1-2</b>
		2007	
<b>77</b>	2007-2004		<b>:2-2</b>
<b>78</b>	2007-2004		<b>:3-2</b>
<b>79</b>			<b>:1-3</b>
		2007-2004	
<b>80</b>	-2004		<b>:2-3</b>
		2007	
<b>81</b>	2007-2004		<b>:3-3</b>
<b>82</b>			<b>:1-4</b>
		2007-2004	
<b>83</b>	2007-2004		<b>:2-4</b>
<b>84</b>	2007-2004		<b>:3-4</b>
<b>85</b>			<b>:1-5</b>
		2007-2004	

86	2007-2004	:2-5
87	2007-2004	:3-5
88		:1-6
	2007-2004	
88	2007-2004	:2-6
89	2007-2004	:3-6
90	2007-2004	:1-7
90	2007-2004	:2-7
90	2007-2004	:3-7

**(2007-2004)**

93	.2004 :	2007-2004	:1-8
94	.2004 :	2007-2004	:2-8
95	.2004 :	2007-2004	:3-8
96	-2004	2004 :	2007
97	2007-2004	2004 :	



98	2007-2004	2004	:	:3-9
99		2004	:	:1-10
100	-2004	2004	:	:2-10
101	2007-2004			:3-10
102		2004	:	:1-11
103	-2004			:2-11
104	2007-2004			:3-11
105		2004	:	:1-12
106	2007-2004			:2-12
107	2007-2004			:3-12
108		2004	:	:1-13
108	2007-2004			:2-13
109	2007-2004			:3-13
110	2007-2004			:1-14
110	2007-2004			:2-14

110 2007-2004 :3-14  
2004 :

(2007-2004)

113 2007-2004 :15

116 2007-2004 :16

119 2007-2004 :17

122 2007-2004 :18

125 2004 : 2007-2004 :19

128 2004 : 2007-2004 :20

131 2004 : 2007-2004 :21

39	2007-2004	:(1
	.( )	
39		:(2
	. 2007-2004	
40	2007-2004	:(3
	.( )	
40	-2004	:(4
	.( ) 2007	
41	.2007	:(5
42		:(6
	.( ) 2007-2004	



:

:

: .1

2007 -2004

( )

: 2007-2004

2004

( )

2007	2006	2005	2004	
4,672.3	4,619.1	4,634.4	4,198.4	
5,219.7	5,047.0	4,992.2	4,430.4	
7,314.1	6,323.2	6,120.1	5,151.1	
1,227.7	601.1	511.0	-450.4	
4,535.7	4,322.3	4,559.5	4,198.4	
5,048.2	4,719.9	4,896.9	4,430.4	
7,139.1	5,902.5	5,988.8	5,151.1	
1,745.0	645.6	491.3	-450.4	

:

2007-2004

2007	2006	2005	2004	
6.3	5.8	5.5	7.1	
12.6	15.5	16.8	17.1	
6.5	7.6	6.4	5.7	
11.4	10.6	9.9	9.8	
6.1	6.0	5.6	6.1	
4.4	4.0	4.3	3.6	
22.1	21.6	22.6	22.8	
14.3	13.4	13.5	14.3	
0.1	0.1	0.0	0.1	
16.2	15.4	15.4	13.4	*
100	100	100	100	

:(\*)

2007-2004

:

2007-2004

2004 :

( )

2007	2006	2005	2004	
1,337.0	1,363.0	1,410.0	1,317.0	
1,493.7	1,489.2	1,518.9	1,389.8	
2,093.0	1,865.8	1,862.0	1,615.9	
1,297.9	1,275.4	1,387.2	1,317.0	
1,444.6	1,392.7	1,489.9	1,389.8	
2,042.9	1,741.7	1,822.1	1,615.9	

:2007-2004

2007-2004

:

2007-2004

2004 :

( )

2007	2006	2005	2004	
1,791.6	1,944.2	1,884.0	1,672.6	
282.0	307.2	249.7	235.3	
1,078.0	925.1	1,012.3	938.1	
230.2	202.1	219.8	163.8	
1,290.5	1,240.5	1,268.6	1,188.6	
1,595.3	1,578.6	1,875.0	1,672.6	
301.3	243.8	252.3	235.3	
1,049.6	1,038.0	1,039.3	938.1	
256.7	205.0	221.1	163.8	
1,332.8	1,256.9	1,171.8	1,188.6	





1993

1993

.1968

1994

2007-2004

1993

1.1 :

:"  
(1993.

2.1 :

2007-2004 :

:  
:  
:  
:  
:  
:  
:  
:

.1993

: .1

:

: (SNA'93)

: - -

( )

) : -  
(

:

:

:

:

:

. :  
 . :  
 . 1 " " :  
 . :  
 . ) :  
 ( ) ( :  
 . :  
 . :  
 ) ( :  
 . ( :  
 . :  
 . :  
 (12) .1929 (18) 1964  
 :  
 : .1  
 : .2  
 )  
 . ( :  
 : / .3

. : .4

. : .5

(2)

. : .6

. : .7

. : .8

. : .9

. : .10

. : .11

. : .12

:

( %51 )

:

." "

:

.1967

:(J1)

.1967

:

:

:

:

:

.2 :

:

" " :

)

(

:

■

■

■

" )

1993

.(1993

1968

"

1993

"

"

)

"

"

(

:

1993

2

:

( )

( )

:

)  
:

(

)  
(

:

2

6.232 – 6.230





: .3

:

.

.

.

.

1993

.

1968

.

:

:

:

.

:

:

( )

( )

.

)

(

3.

...

. ...

.

"

"

.

.

•

•

•

•

$$\vdots$$

**.4**

⋮

•

$$\vdots$$

•

•

:(

)

•

•

)

(

)

•

• • • •

(

$$\vdots$$

•

•

$$\vdots$$

)

•

(

4

:

( )

5

:

.( )

:

)

:

(

.( )

---

4

.1993

1968

5

### 1.3

2007-2004

2007	2006	2005	2004	
6.3	5.8	5.5	7.1	
12.6	15.5	16.8	17.1	
6.5	7.6	6.4	5.7	
11.4	10.6	9.9	9.8	
6.1	6.0	5.6	6.1	
4.4	4.0	4.3	3.6	
22.1	21.6	22.6	22.8	
14.3	13.4	13.5	14.3	
0.1	0.1	0.0	0.1	
16.2	15.4	15.4	13.4	*
100	100	100	100	

:(\*)

2007 2004 %6.1

2005 %5.6

%7.6 2006

.%5.7 2004

2007-2004 (GDP) :

2007-2004

:

2007-2004

:1

( )

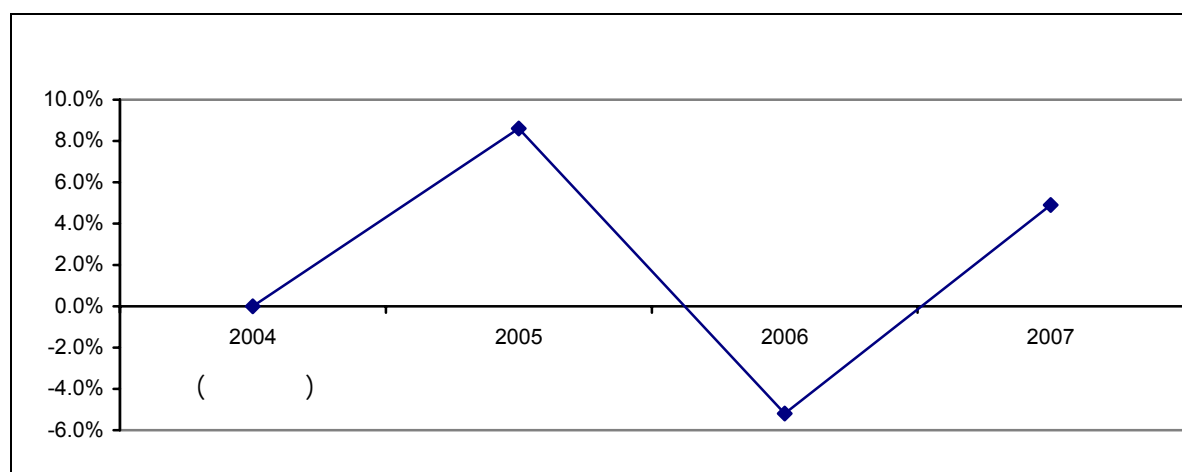


2007-2004

:

2007-2004

:2



2007-2004 (GNI)

:

-

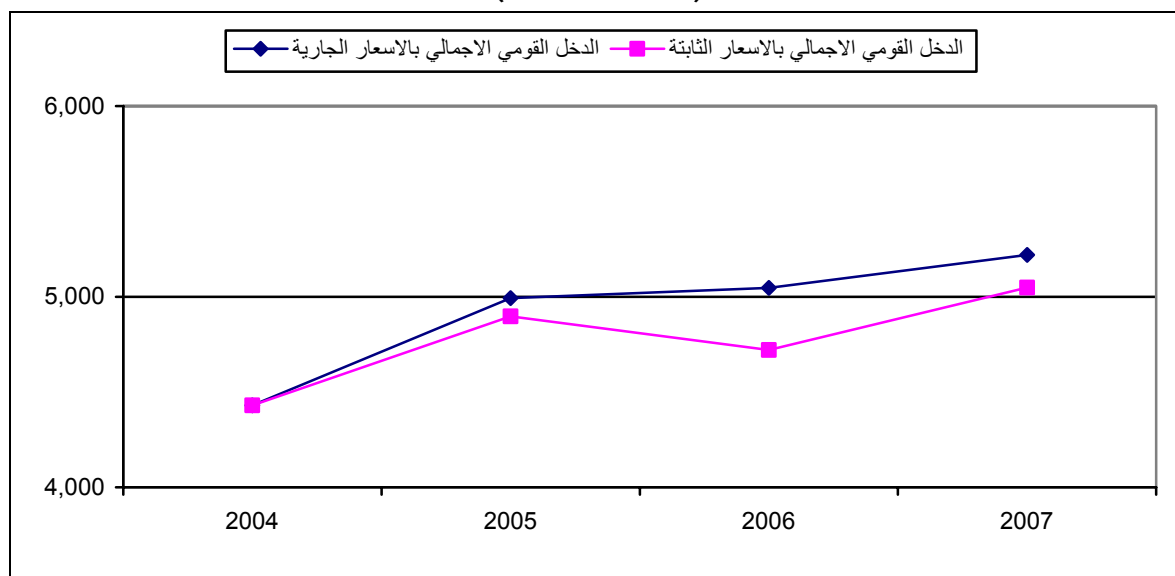
-

:2007-2004

2007-2004

:3

( )



2007-2004 (GDI)

:

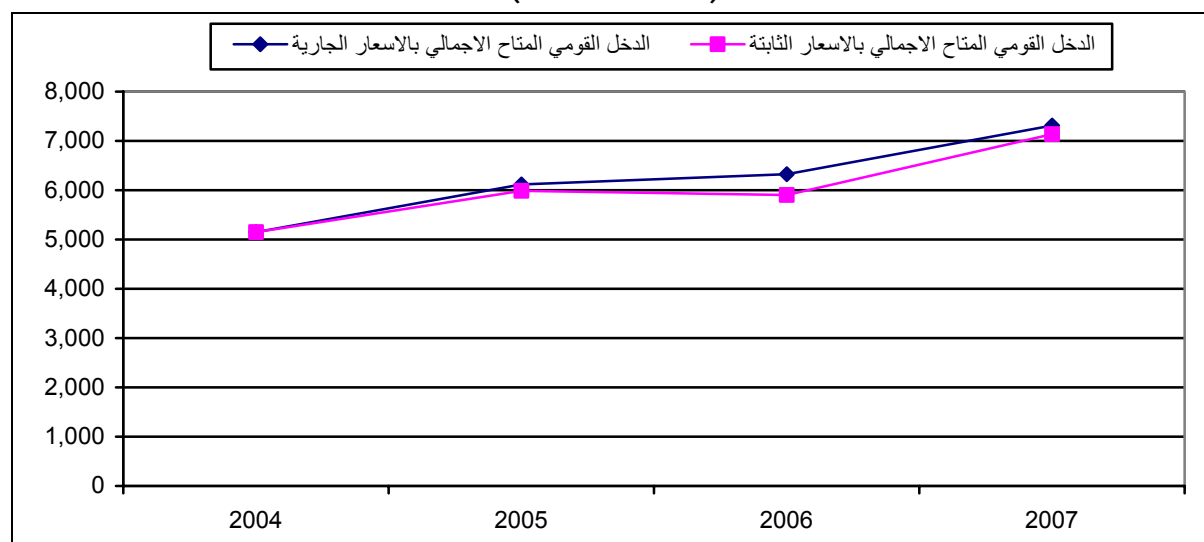
( )

:

2007-2004

:4

( )



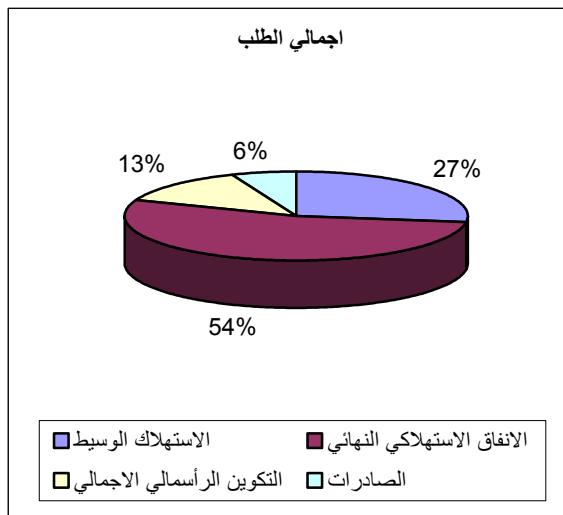


:

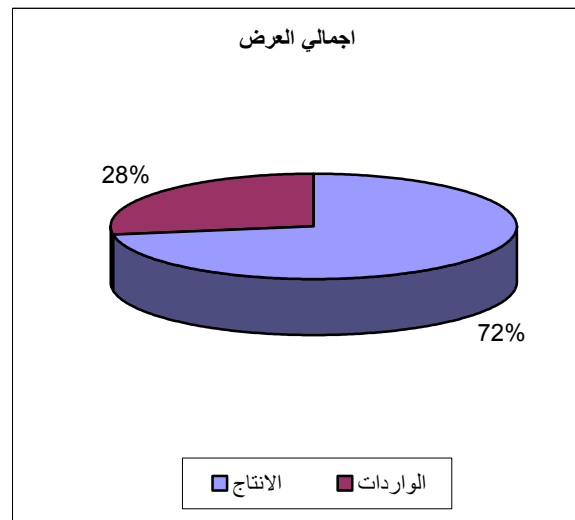
:

:2007

2007



:5



:

:

.1

: ( ) 2007-2004

2007	2006	2005	2004	
1,337.0	1,363.0	1,410.0	1,317.0	
1,493.7	1,489.2	1,518.9	1,389.8	
2,093.0	1,865.8	1,862.0	1,615.9	

.2

: ( ) 2007-2004

2007	2006	2005	2004	
1,297.9	1,275.4	1,387.2	1,317.0	
1,444.6	1,392.7	1,489.9	1,389.8	
2,042.9	1,741.7	1,822.1	1,615.9	

:

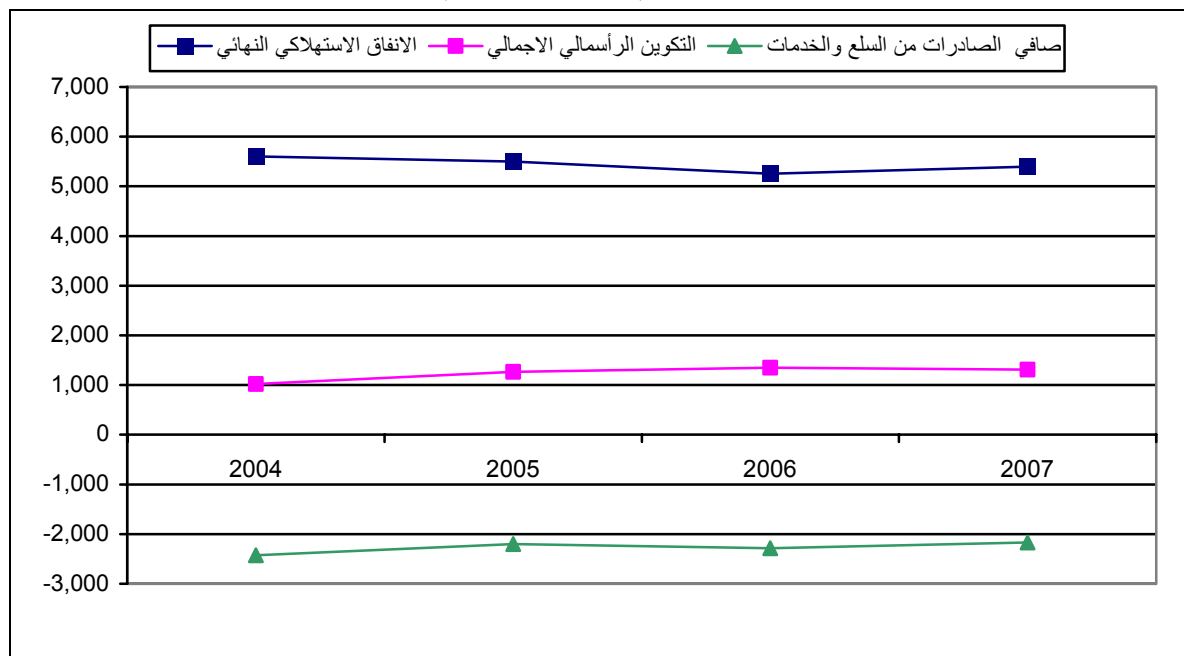
5,601.5 2004  
 .%81.3 2005  
 2006 1,347.2  
 %37.2  
 .2004 1,022.3  
 2,425.4 2004 (2007-2004)

:

2007-2004

:6

( )



2.3

2007-2004

:

**2004 :2007-2004**

( )

2007	2006	2005	2004	
1,791.6	1,944.2	1,884.0	1,672.6	
282.0	307.2	249.7	235.3	
1,078.0	925.1	1,012.3	938.1	
230.2	202.1	219.8	163.8	
1,290.5	1,240.5	1,268.6	1,188.6	
1,595.3	1,578.6	1,875.0	1,672.6	
301.3	243.8	252.3	235.3	
1,049.6	1,038.0	1,039.3	938.1	
256.7	205.0	221.1	163.8	
1,332.8	1,256.9	1,171.8	1,188.6	





	( ) ) (	
	( ) ) (	
	( ) ( )	
	UNRWA	
	UNRWA	

:

	:	
	UNRWA	
	) ( ) (	
	) (	
	( )	
	( )	
	( )	

:

.		( )
.		( )
.		
.		

:

2.1.1.4

.( )

: 2007-2004 :

: •

.2007

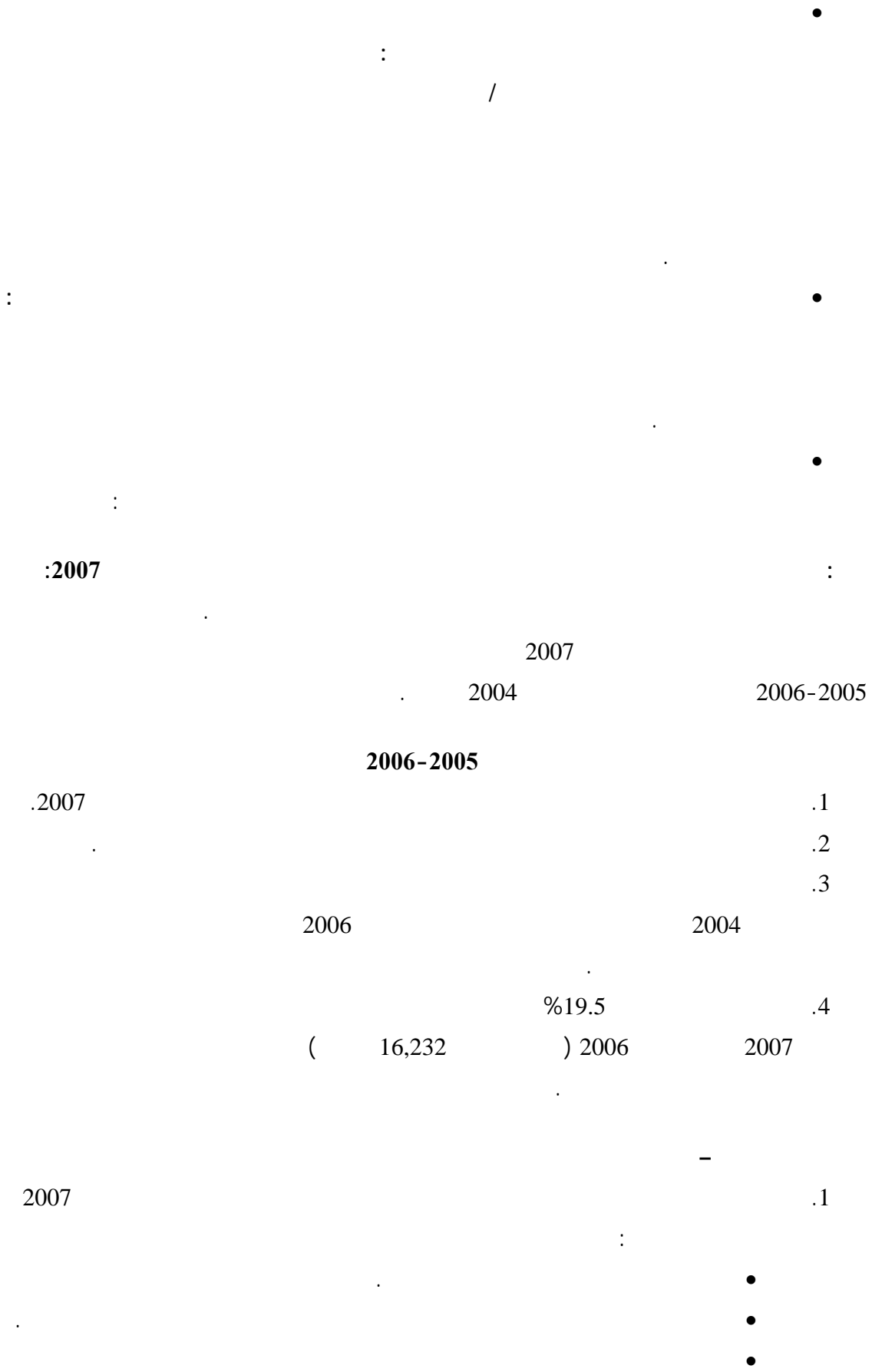
•

.

.

.







: 1999  
 (ISIC)  
 ( )  
 :

- 
- 
- 

2007-2004

:3.1.1.4

: •

: •

: •

2007-2004

2.1.4

1.2.1.4

$$\text{Value Added} = \sum P_1 \cdot Q_1 - \sum p_2 \cdot q_2$$

**Double Deflation Method** ( )

(  $P_1 \cdot Q_1$  )

(  $p_2 \cdot q_2$  )

2.2.1.4

:

:

:

1995

.(1995 ) 1995

1996

1997 ( )

1996

( Statistical Abstract of Israel)

.  
 :  
 :  
 .  
 :  
 (Indices)  
 :  
 Wholesaler Price ) (Consumer Price Index  
 .(Producer Price Index) (Index  
 .  
 .(100=2004) 2004  
 :  
 SNA93  
 - -  
 .(Residual)  
 :  
 :  
 :  
 .1  
 :  
 .2007-2004

. ( )  
 .  
 :  
 .  
 .2  
 .  
 .3  
 :  
 + ) - + + + =  
 .(

( )  
 .  
 :  
 .1  
 :  
 2004 2007-2004  
 2007-  
 .2  
 :  
 .2007-2004

( )

.3

:

1998

.2007-2004

.4

.2007-2004  
(Export Price Index)

:

:

•

1998

•

•

2004

2004

.(2003-1994

1997

)

## 2.4

2007-2004

.1993

$$\vdots$$
$$\vdots$$
$$\vdots$$

•

•

•

•

•

•

.(

$$\vdots$$

•

)

$$\vdots$$

2004

2006-2004

.2007

2007







1.5

					: .1994	
	(		)			-
						-
				.2007		-
						-
			2006-2005			-
					2007	
						-
						-
		2007				-
						-
					:	-
						-
						-
				:		-
						-
		2007-2004		2004	1997	-
2004						
		1997				
					:	

:

.2007

.

.

.

.

.

:

.

.

.

.

:

( )

:

( )

( )

.( )

.

:

:

■

.

.

.

.

□ :

1999

(Under coverage)

:

.( )

2.5

( )

( )

.(Human Error)

(Checks)

:

:

( )

:

:

( )



1993

(K)

6

(ISIC)

%60

1997

:

.1

( : )

.2

(1 ) ( )

%30

.3

( )

.4

)

.5

.(12.5 (4)

(

)

.( ...

### 3.6

UNRWA ( )

7

( )

.(UNRWA )



1998 1997

:  
(SNA93) 1993 : -  
( ) .  
.  
%15  
: : -  
: .1

Broad Economic Classification (BEC)

BEC

:  
( ) :4  
:5  
:6

.1993  
PECS

) .(Under coverage)  
.(

: .2

(FISIM) 4.6

.( ) ( )

.

:

– ( )

.

( )

.

( )

.

.

:

(FISIM)

.1

.(FISIM )

1968

.

.2

.1993

.<sup>8</sup>

( )

.

.

**5.6**

.Undercoverage

:

FISIM

8

127.6

.1

( )

.  
.

Own Use Account Production

.2

.

6.6

( )

:

■  
■

.

.

: (SC)

.(C)

- (PS)

+ (P)

=

( )

.

/

)

.(

: (NP)

(SC)

– (PS)

+ (P)

**7.6**

1997

-2004

2004

1997

(2007

2003-1994

# Tables



**(2007-2004)**  
**Annual National Accounts Tables at Current Prices**  
**(2004-2007)**





2007-2004

:1-1

**Table 1-1: Percentage Contribution to GDP in Remaining West Bank and Gaza Strip by Economic Activity for the Years 2004-2007  
at Current Prices**

<b>Economic Activity</b>	<b>2007</b>	<b>2006</b>	<b>2005</b>	<b>2004</b>	
<b>Agriculture and fishing</b>	<b>6.3</b>	<b>5.8</b>	<b>5.5</b>	<b>7.1</b>	
<b>Mining, manufacturing, electr. and water</b>	<b>12.6</b>	<b>15.5</b>	<b>16.8</b>	<b>17.1</b>	
Mining and quarrying	0.3	0.5	0.6	0.7	
Manufacturing	9.4	12.2	13.0	13.2	
Electricity and water supply	2.9	2.8	3.2	3.2	
<b>Construction</b>	<b>6.5</b>	<b>7.6</b>	<b>6.4</b>	<b>5.7</b>	
<b>Wholesale and retail trade</b>	<b>11.4</b>	<b>10.6</b>	<b>9.9</b>	<b>9.8</b>	
<b>Transport, Storage and Communications</b>	<b>6.1</b>	<b>6.0</b>	<b>5.6</b>	<b>6.1</b>	
<b>Financial intermediation</b>	<b>4.4</b>	<b>4.0</b>	<b>4.3</b>	<b>3.6</b>	
<b>Other services</b>	<b>22.1</b>	<b>21.6</b>	<b>22.6</b>	<b>22.8</b>	
Real estate, renting and business services	8.4	10.1	10.0	10.4	
Community, social and personal services	1.1	1.0	1.2	0.9	
Hotels and restaurants	1.2	0.9	0.9	0.7	
Education	8.5	7.3	8.1	7.8	
Health and social work	2.9	2.3	2.4	3.0	
<b>Public administration and defense</b>	<b>14.3</b>	<b>13.4</b>	<b>13.5</b>	<b>14.3</b>	
<b>Households with employed persons</b>	<b>0.1</b>	<b>0.1</b>	<b>0.0</b>	<b>0.1</b>	
<b>Public owned employed persons</b>	<b>4.2</b>	<b>4.3</b>	<b>4.2</b>	<b>3.7</b>	
Less: FISIM	-4.2	-2.8	-2.5	-2.8	:
Plus: Customs duties	6.3	6.2	6.0	4.8	:
Plus: VAT on imports, net	9.9	7.7	7.7	7.7	:
<b>Total</b>	<b>100</b>	<b>100</b>	<b>100</b>	<b>100</b>	

2007-2004

:2-1

**Table 1-2: Percentage Contribution to GDP in Remaining West Bank by Economic Activity for the Years 2004-2007 at Current Prices**

Economic Activity	2007	2006	2005	2004	
<b>Agriculture and fishing</b>	<b>5.5</b>	<b>5.2</b>	<b>5.3</b>	<b>6.5</b>	
<b>Mining, manufacturing, electr. and water</b>	<b>14.5</b>	<b>17.9</b>	<b>19.4</b>	<b>19.1</b>	
Mining and quarrying	0.4	0.7	0.9	1.1	
Manufacturing	11.5	14.7	16.2	15.7	
Electricity and water supply	2.6	2.5	2.3	2.3	
<b>Construction</b>	<b>7.2</b>	<b>7.7</b>	<b>5.9</b>	<b>5.3</b>	
<b>Wholesale and retail trade</b>	<b>12.2</b>	<b>10.7</b>	<b>9.5</b>	<b>10.1</b>	
<b>Transport, Storage and Communications</b>	<b>8.1</b>	<b>7.9</b>	<b>7.0</b>	<b>8.3</b>	
<b>Financial intermediation</b>	<b>4.3</b>	<b>4.0</b>	<b>4.8</b>	<b>4.1</b>	
<b>Other services</b>	<b>17.7</b>	<b>18.7</b>	<b>21.1</b>	<b>20.3</b>	
Real estate, renting and business services	7.2	9.5	9.7	9.5	
Community, social and personal services	1.0	1.0	1.2	0.8	
Hotels and restaurants	1.1	0.9	1.0	0.8	
Education	5.9	5.2	6.6	6.2	
Health and social work	2.5	2.1	2.6	3.0	
<b>Public administration and defense</b>	<b>12.4</b>	<b>10.9</b>	<b>10.8</b>	<b>12.4</b>	
<b>Households with employed persons</b>	<b>0.1</b>	<b>0.1</b>	<b>0.0</b>	<b>0.1</b>	
<b>Public owned employed persons</b>	<b>4.0</b>	<b>3.7</b>	<b>4.0</b>	<b>3.6</b>	
Less: FISIM	-3.4	-2.4	-2.4	-2.4	:
Plus: Customs duties	6.8	7.1	6.7	5.0	:
Plus: VAT on imports, net	10.6	8.5	7.9	7.6	:
<b>Total</b>	<b>100</b>	<b>100</b>	<b>100</b>	<b>100</b>	

2007-2004

:3-1

Table 1-3: Percentage Contribution to GDP in Gaza Strip by Economic Activity for the Years 2004-2007 at Current Prices

Economic Activity	2007	2006	2005	2004	
<b>Agriculture and fishing</b>	<b>8.1</b>	<b>7.0</b>	<b>5.8</b>	<b>8.3</b>	
<b>Mining, manufacturing, electr. and water</b>	<b>7.6</b>	<b>10.2</b>	<b>12.2</b>	<b>13.2</b>	
Mining and quarrying	0.0	0.0	0.0	0.0	
Manufacturing	3.9	6.7	7.5	8.2	
Electricity and water supply	3.7	3.5	4.7	5.0	
<b>Construction</b>	<b>4.7</b>	<b>7.5</b>	<b>7.4</b>	<b>6.4</b>	
<b>Wholesale and retail trade</b>	<b>9.4</b>	<b>10.3</b>	<b>10.8</b>	<b>9.3</b>	
<b>Transport, Storage and Communications</b>	<b>1.2</b>	<b>1.6</b>	<b>3.1</b>	<b>1.6</b>	
<b>Financial intermediation</b>	<b>4.7</b>	<b>3.9</b>	<b>3.5</b>	<b>2.4</b>	
<b>Other services</b>	<b>33.4</b>	<b>28.4</b>	<b>25.2</b>	<b>27.8</b>	
Real estate, renting and business services	11.4	11.3	10.8	12.4	
Community, social and personal services	1.4	1.2	1.1	1.1	
Hotels and restaurants	1.4	1.0	0.7	0.6	
Education	15.2	12.2	10.6	11.0	
Health and social work	4.0	2.7	2.0	2.7	
<b>Public administration and defense</b>	<b>19.4</b>	<b>18.9</b>	<b>18.2</b>	<b>18.0</b>	
<b>Households with employed persons</b>	<b>0.0</b>	<b>0.0</b>	<b>0.0</b>	<b>0.1</b>	
<b>Public owned employed persons</b>	<b>4.6</b>	<b>5.6</b>	<b>4.4</b>	<b>3.8</b>	
Less: FISIM	-6.1	-3.6	-2.8	-3.3	:
Plus: Customs duties	4.8	4.3	4.8	4.7	:
Plus: VAT on imports, net	8.2	5.9	7.4	7.7	:
<b>Total</b>	<b>100</b>	<b>100</b>	<b>100</b>	<b>100</b>	

2007-2004

:1-2

**Table 2-1: Output in Remaining West Bank and Gaza Strip by Economic Activity for the Years 2004-2007 at Current Prices**

Value In US\$ Million

<b>Economic Activity</b>	<b>2007</b>	<b>2006</b>	<b>2005</b>	<b>2004</b>	
<b>Agriculture and fishing</b>	<b>745.0</b>	<b>718.0</b>	<b>720.8</b>	<b>619.5</b>	
<b>Mining, manufacturing, electr. and water</b>	<b>1,670.9</b>	<b>1,910.7</b>	<b>1,859.3</b>	<b>1,681.1</b>	
Mining and quarrying	32.1	41.6	48.7	63.4	
Manufacturing	1,436.6	1,680.6	1,537.5	1,348.9	
Electricity and water supply	202.2	188.5	273.1	268.8	
<b>Construction</b>	<b>708.8</b>	<b>676.4</b>	<b>693.3</b>	<b>771.9</b>	
<b>Wholesale and retail trade</b>	<b>803.3</b>	<b>750.0</b>	<b>706.7</b>	<b>633.7</b>	
<b>Transport, Storage and Communications</b>	<b>460.0</b>	<b>455.5</b>	<b>412.6</b>	<b>347.6</b>	
<b>Financial intermediation</b>	<b>265.5</b>	<b>228.0</b>	<b>263.5</b>	<b>194.3</b>	
<b>Other services</b>	<b>1,286.2</b>	<b>1,238.7</b>	<b>1,317.7</b>	<b>1,141.5</b>	
Real estate, renting and business services	422.0	488.7	494.4	460.9	
Community, social and personal services	93.8	96.2	102.0	59.2	
Hotels and restaurants	108.4	112.7	103.4	68.5	
Education	444.7	375.3	416.5	358.6	
Health and social work	217.3	165.8	201.4	194.3	
<b>Public administration and defense</b>	<b>1,164.8</b>	<b>959.6</b>	<b>1,078.7</b>	<b>1,006.3</b>	
<b>Households with employed persons</b>	<b>3.6</b>	<b>2.9</b>	<b>1.8</b>	<b>2.9</b>	
<b>Public owned employed persons</b>	<b>386.5</b>	<b>372.7</b>	<b>351.6</b>	<b>336.6</b>	
Less: FISIM	0.0	0.0	0.0	0.0	:
Plus: Customs duties	292.8	287.2	277.4	204.0	:
Plus: VAT on imports, net	462.6	354.7	357.6	323.1	:
<b>Gross Output</b>	<b>8,250.0</b>	<b>7,954.4</b>	<b>8,041.0</b>	<b>7,262.5</b>	

2007-2004

:2-2

Table 2-2: Output in Remaining West Bank by Economic Activity for the Years 2004-2007 at Current Prices

Value In US\$ Million

Economic Activity	2007	2006	2005	2004	
<b>Agriculture and fishing</b>	<b>555.4</b>	<b>525.3</b>	<b>527.7</b>	<b>440.3</b>	
<b>Mining, manufacturing, electr. and water</b>	<b>1,439.7</b>	<b>1,524.7</b>	<b>1,363.0</b>	<b>1,258.9</b>	
Mining and quarrying	32.1	41.6	48.7	63.4	
Manufacturing	1,268.1	1,355.8	1,165.7	1,049.7	
Electricity and water supply	139.5	127.3	148.6	145.8	
<b>Construction</b>	<b>525.4</b>	<b>451.9</b>	<b>425.0</b>	<b>485.9</b>	
<b>Wholesale and retail trade</b>	<b>590.5</b>	<b>520.2</b>	<b>437.2</b>	<b>423.5</b>	
<b>Transport, Storage and Communications</b>	<b>426.1</b>	<b>411.3</b>	<b>322.4</b>	<b>305.2</b>	
<b>Financial intermediation</b>	<b>186.1</b>	<b>159.8</b>	<b>184.7</b>	<b>150.4</b>	
<b>Other services</b>	<b>753.5</b>	<b>749.1</b>	<b>775.2</b>	<b>685.5</b>	
Real estate, renting and business services	265.9	318.3	297.4	282.0	
Community, social and personal services	61.2	61.7	62.9	36.8	
Hotels and restaurants	70.1	75.9	66.5	45.7	
Education	223.5	187.1	217.5	194.6	
Health and social work	132.8	106.1	130.9	126.4	
<b>Public administration and defense</b>	<b>686.0</b>	<b>535.4</b>	<b>552.8</b>	<b>582.1</b>	
<b>Households with employed persons</b>	<b>3.6</b>	<b>2.5</b>	<b>1.1</b>	<b>1.6</b>	
<b>Public owned employed persons</b>	<b>251.2</b>	<b>223.6</b>	<b>196.3</b>	<b>188.7</b>	
Less: FISIM	0.0	0.0	0.0	0.0	:
Plus: Customs duties	229.8	225.4	196.1	139.3	:
Plus: VAT on imports, net	353.6	271.1	230.3	216.0	:
<b>Gross Output</b>	<b>6,000.9</b>	<b>5,600.3</b>	<b>5,211.8</b>	<b>4,877.4</b>	

2007-2004

:3-2

Table 2-3: Output in Gaza Strip by Economic Activity for the Years 2004-2007 at Current Prices

Value In US\$ Million

Economic Activity	2007	2006	2005	2004	
<b>Agriculture and fishing</b>	<b>189.6</b>	<b>192.7</b>	<b>193.1</b>	<b>179.2</b>	
<b>Mining, manufacturing, electr. and water</b>	<b>231.2</b>	<b>386.0</b>	<b>496.3</b>	<b>422.2</b>	
Mining and quarrying	0.0	0.0	0.0	0.0	
Manufacturing	168.5	324.8	371.8	299.2	
Electricity and water supply	62.7	61.2	124.5	123.0	
<b>Construction</b>	<b>183.4</b>	<b>224.5</b>	<b>268.3</b>	<b>286.0</b>	
<b>Wholesale and retail trade</b>	<b>212.8</b>	<b>229.8</b>	<b>269.5</b>	<b>210.2</b>	
<b>Transport, Storage and Communications</b>	<b>33.9</b>	<b>44.2</b>	<b>90.2</b>	<b>42.4</b>	
<b>Financial intermediation</b>	<b>79.4</b>	<b>68.2</b>	<b>78.8</b>	<b>43.9</b>	
<b>Other services</b>	<b>532.7</b>	<b>489.6</b>	<b>542.5</b>	<b>456.0</b>	
Real estate, renting and business services	156.1	170.4	197.0	178.9	
Community, social and personal services	32.6	34.5	39.1	22.4	
Hotels and restaurants	38.3	36.8	36.9	22.8	
Education	221.2	188.2	199.0	164.0	
Health and social work	84.5	59.7	70.5	67.9	
<b>Public administration and defense</b>	<b>478.8</b>	<b>424.2</b>	<b>525.9</b>	<b>424.2</b>	
<b>Households with employed persons</b>	<b>0.0</b>	<b>0.4</b>	<b>0.7</b>	<b>1.3</b>	
<b>Public owned employed persons</b>	<b>135.3</b>	<b>149.1</b>	<b>155.3</b>	<b>147.9</b>	
Less: FISIM	0.0	0.0	0.0	0.0	:
Plus: Customs duties	63.0	61.8	81.3	64.7	:
Plus: VAT on imports, net	109.0	83.6	127.3	107.1	:
<b>Gross Output</b>	<b>2,249.1</b>	<b>2,354.1</b>	<b>2,829.2</b>	<b>2,385.1</b>	

2007-2004

:1-3

**Table 3-1: Intermediate Consumption in Remaining West Bank and Gaza Strip by Economic Activity for the Years 2004-2007 at Current Prices**

Value In US\$ Million

<b>Economic Activity</b>	<b>2007</b>	<b>2006</b>	<b>2005</b>	<b>2004</b>	
<b>Agriculture and fishing</b>	<b>452.2</b>	<b>450.5</b>	<b>467.4</b>	<b>322.8</b>	
<b>Mining, manufacturing, electr. and water</b>	<b>1,082.6</b>	<b>1,193.6</b>	<b>1,081.5</b>	<b>962.1</b>	
Mining and quarrying	17.8	18.9	21.1	33.7	
Manufacturing	998.7	1,116.7	936.2	794.9	
Electricity and water supply	66.1	58.0	124.2	133.5	
<b>Construction</b>	<b>404.3</b>	<b>323.5</b>	<b>395.4</b>	<b>533.5</b>	
<b>Wholesale and retail trade</b>	<b>269.6</b>	<b>260.6</b>	<b>245.9</b>	<b>221.3</b>	
<b>Transport, Storage and Communications</b>	<b>173.3</b>	<b>179.8</b>	<b>154.2</b>	<b>91.2</b>	
<b>Financial intermediation</b>	<b>58.5</b>	<b>44.1</b>	<b>64.1</b>	<b>44.1</b>	
<b>Other services</b>	<b>252.4</b>	<b>238.5</b>	<b>269.5</b>	<b>184.3</b>	
Real estate, renting and business services	29.2	24.3	28.3	22.2	
Community, social and personal services	40.4	47.8	48.2	22.7	
Hotels and restaurants	53.9	71.1	61.9	38.3	
Education	48.3	35.8	41.5	32.5	
Health and social work	80.6	59.5	89.6	68.6	
<b>Public administration and defense</b>	<b>494.4</b>	<b>342.8</b>	<b>453.1</b>	<b>407.6</b>	
<b>Households with employed persons</b>	<b>0.0</b>	<b>0.0</b>	<b>0.0</b>	<b>0.0</b>	
<b>Public owned employed persons</b>	<b>192.1</b>	<b>173.3</b>	<b>159.1</b>	<b>182.9</b>	
Less: FISIM	198.3	128.6	116.4	114.3	:
Plus: Customs duties	0.0	0.0	0.0	0.0	:
Plus: VAT on imports, net	0.0	0.0	0.0	0.0	:
<b>Gross Intermediate Consumption</b>	<b>3,577.7</b>	<b>3,335.3</b>	<b>3,406.6</b>	<b>3,064.1</b>	

2007-2004

:2-3

**Table 3-2: Intermediate Consumption in Remaining West Bank by Economic Activity for the Years 2004-2007 at Current Prices**

Value In US\$ Million

<b>Economic Activity</b>	<b>2007</b>	<b>2006</b>	<b>2005</b>	<b>2004</b>	
<b>Agriculture and fishing</b>	<b>369.2</b>	<b>358.1</b>	<b>372.8</b>	<b>259.2</b>	
<b>Mining, manufacturing, electr. and water</b>	<b>951.4</b>	<b>952.6</b>	<b>793.9</b>	<b>723.7</b>	
Mining and quarrying	17.8	18.9	21.1	33.7	
Manufacturing	882.1	886.6	692.6	609.6	
Electricity and water supply	51.5	47.1	80.2	80.4	
<b>Construction</b>	<b>282.7</b>	<b>205.5</b>	<b>252.8</b>	<b>336.1</b>	
<b>Wholesale and retail trade</b>	<b>180.3</b>	<b>178.4</b>	<b>160.2</b>	<b>140.4</b>	
<b>Transport, Storage and Communications</b>	<b>154.6</b>	<b>159.1</b>	<b>116.3</b>	<b>71.0</b>	
<b>Financial intermediation</b>	<b>41.0</b>	<b>30.9</b>	<b>44.9</b>	<b>34.1</b>	
<b>Other services</b>	<b>158.7</b>	<b>153.8</b>	<b>156.6</b>	<b>115.4</b>	
Real estate, renting and business services	22.8	14.9	16.4	15.6	
Community, social and personal services	26.2	30.9	27.1	15.0	
Hotels and restaurants	34.0	48.7	36.9	23.5	
Education	26.7	20.8	22.8	21.8	
Health and social work	49.0	38.5	53.4	39.5	
<b>Public administration and defense</b>	<b>271.1</b>	<b>188.5</b>	<b>236.8</b>	<b>233.1</b>	
<b>Households with employed persons</b>	<b>0.0</b>	<b>0.0</b>	<b>0.0</b>	<b>0.0</b>	
<b>Public owned employed persons</b>	<b>116.7</b>	<b>104.0</b>	<b>78.7</b>	<b>88.4</b>	
Less: FISIM	119.0	77.2	69.9	68.6	:
Plus: Customs duties	0.0	0.0	0.0	0.0	:
Plus: VAT on imports, net	0.0	0.0	0.0	0.0	:
<b>Gross Intermediate Consumption</b>	<b>2,644.7</b>	<b>2,408.1</b>	<b>2,282.9</b>	<b>2,070.0</b>	



2007-2004

:3-3

**Table 3-3: Intermediate Consumption in Gaza Strip by Economic Activity for the Years 2004-2007 at Current Prices**

Value In US\$ Million

<b>Economic Activity</b>	<b>2007</b>	<b>2006</b>	<b>2005</b>	<b>2004</b>	
<b>Agriculture and fishing</b>	<b>83.0</b>	<b>92.4</b>	<b>94.6</b>	<b>63.6</b>	
<b>Mining, manufacturing, electr. and water</b>	<b>131.2</b>	<b>241.0</b>	<b>287.6</b>	<b>238.4</b>	
Mining and quarrying	0.0	0.0	0.0	0.0	
Manufacturing	116.6	230.1	243.6	185.3	
Electricity and water supply	14.6	10.9	44.0	53.1	
<b>Construction</b>	<b>121.6</b>	<b>118.0</b>	<b>142.6</b>	<b>197.4</b>	
<b>Wholesale and retail trade</b>	<b>89.3</b>	<b>82.2</b>	<b>85.7</b>	<b>80.9</b>	
<b>Transport, Storage and Communications</b>	<b>18.7</b>	<b>20.7</b>	<b>37.9</b>	<b>20.2</b>	
<b>Financial intermediation</b>	<b>17.5</b>	<b>13.2</b>	<b>19.2</b>	<b>10.0</b>	
<b>Other services</b>	<b>93.7</b>	<b>84.7</b>	<b>112.9</b>	<b>68.9</b>	
Real estate, renting and business services	6.4	9.4	11.9	6.6	
Community, social and personal services	14.2	16.9	21.1	7.7	
Hotels and restaurants	19.9	22.4	25.0	14.8	
Education	21.6	15.0	18.7	10.7	
Health and social work	31.6	21.0	36.2	29.1	
<b>Public administration and defense</b>	<b>223.3</b>	<b>154.3</b>	<b>216.3</b>	<b>174.5</b>	
<b>Households with employed persons</b>	<b>0.0</b>	<b>0.0</b>	<b>0.0</b>	<b>0.0</b>	
<b>Public owned employed persons</b>	<b>75.4</b>	<b>69.3</b>	<b>80.4</b>	<b>94.5</b>	
Less: FISIM	79.3	51.4	46.5	45.7	:
Plus: Customs duties	0.0	0.0	0.0	0.0	:
Plus: VAT on imports, net	0.0	0.0	0.0	0.0	:
<b>Gross Intermediate Consumption</b>	<b>933.0</b>	<b>927.2</b>	<b>1,123.7</b>	<b>994.1</b>	

2007-2004

:1-4

**Table 4-1: Value Added in Remaining West Bank and Gaza Strip by Economic Activity for the Years 2004-2007 at Current Prices**

Value In US\$ Million

<b>Economic Activity</b>	<b>2007</b>	<b>2006</b>	<b>2005</b>	<b>2004</b>	
<b>Agriculture and fishing</b>	<b>292.8</b>	<b>267.5</b>	<b>253.4</b>	<b>296.7</b>	
<b>Mining, manufacturing, electr. and water</b>	<b>588.3</b>	<b>717.1</b>	<b>777.8</b>	<b>719.0</b>	
Mining and quarrying	14.3	22.7	27.6	29.7	
Manufacturing	437.9	563.9	601.3	554.0	
Electricity and water supply	136.1	130.5	148.9	135.3	
<b>Construction</b>	<b>304.5</b>	<b>352.9</b>	<b>297.9</b>	<b>238.4</b>	
<b>Wholesale and retail trade</b>	<b>533.7</b>	<b>489.4</b>	<b>460.8</b>	<b>412.4</b>	
<b>Transport, Storage and Communications</b>	<b>286.7</b>	<b>275.7</b>	<b>258.4</b>	<b>256.4</b>	
<b>Financial intermediation</b>	<b>207.0</b>	<b>183.9</b>	<b>199.4</b>	<b>150.2</b>	
<b>Other services</b>	<b>1,033.8</b>	<b>1,000.2</b>	<b>1,048.2</b>	<b>957.2</b>	
Real estate, renting and business services	392.8	464.4	466.1	438.7	
Community, social and personal services	53.4	48.4	53.8	36.5	
Hotels and restaurants	54.5	41.6	41.5	30.2	
Education	396.4	339.5	375.0	326.1	
Health and social work	136.7	106.3	111.8	125.7	
<b>Public administration and defense</b>	<b>670.4</b>	<b>616.8</b>	<b>625.6</b>	<b>598.7</b>	
<b>Households with employed persons</b>	<b>3.6</b>	<b>2.9</b>	<b>1.8</b>	<b>2.9</b>	
<b>Public owned employed persons</b>	<b>194.4</b>	<b>199.4</b>	<b>192.5</b>	<b>153.7</b>	
Less: FISIM	-198.3	-128.6	-116.4	-114.3	:
Plus: Customs duties	292.8	287.2	277.4	204.0	:
Plus: VAT on imports, net	462.6	354.7	357.6	323.1	:
<b>Gross Domestic Product</b>	<b>4,672.3</b>	<b>4,619.1</b>	<b>4,634.4</b>	<b>4,198.4</b>	

2007-2004

:2-4

**Table 4-2: Value Added in Remaining West Bank by Economic Activity for the Years 2004-2007 at Current Prices**

Value In US\$ Million

<b>Economic Activity</b>	<b>2007</b>	<b>2006</b>	<b>2005</b>	<b>2004</b>	
<b>Agriculture and fishing</b>	<b>186.2</b>	<b>167.2</b>	<b>154.9</b>	<b>181.1</b>	
<b>Mining, manufacturing, electr. and water</b>	<b>488.3</b>	<b>572.1</b>	<b>569.1</b>	<b>535.2</b>	
Mining and quarrying	14.3	22.7	27.6	29.7	
Manufacturing	386.0	469.2	473.1	440.1	
Electricity and water supply	88.0	80.2	68.4	65.4	
<b>Construction</b>	<b>242.7</b>	<b>246.4</b>	<b>172.2</b>	<b>149.8</b>	
<b>Wholesale and retail trade</b>	<b>410.2</b>	<b>341.8</b>	<b>277.0</b>	<b>283.1</b>	
<b>Transport, Storage and Communications</b>	<b>271.5</b>	<b>252.2</b>	<b>206.1</b>	<b>234.2</b>	
<b>Financial intermediation</b>	<b>145.1</b>	<b>128.9</b>	<b>139.8</b>	<b>116.3</b>	
<b>Other services</b>	<b>594.8</b>	<b>595.3</b>	<b>618.6</b>	<b>570.1</b>	
Real estate, renting and business services	243.1	303.4	281.0	266.4	
Community, social and personal services	35.0	30.8	35.8	21.8	
Hotels and restaurants	36.1	27.2	29.6	22.2	
Education	196.8	166.3	194.7	172.8	
Health and social work	83.8	67.6	77.5	86.9	
<b>Public administration and defense</b>	<b>414.9</b>	<b>346.9</b>	<b>316.0</b>	<b>349.0</b>	
<b>Households with employed persons</b>	<b>3.6</b>	<b>2.5</b>	<b>1.1</b>	<b>1.6</b>	
<b>Public owned employed persons</b>	<b>134.5</b>	<b>119.6</b>	<b>117.6</b>	<b>100.3</b>	
Less: FISIM	-119.0	-77.2	-69.9	-68.6	:
Plus: Customs duties	229.8	225.4	196.1	139.3	:
Plus: VAT on imports, net	353.6	271.1	230.3	216.0	:
<b>Gross Domestic Product</b>	<b>3,356.2</b>	<b>3,192.2</b>	<b>2,928.9</b>	<b>2,807.4</b>	

2007-2004

:3-4

Table 4-3: Value Added in Gaza Strip by Economic Activity for the Years 2004-2007 at Current Prices

Value In US\$ Million

Economic Activity	2007	2006	2005	2004	
<b>Agriculture and fishing</b>	<b>106.6</b>	<b>100.3</b>	<b>98.5</b>	<b>115.6</b>	
<b>Mining, manufacturing, electr. and water</b>	<b>100.0</b>	<b>145.0</b>	<b>208.7</b>	<b>183.8</b>	
Mining and quarrying	0.0	0.0	0.0	0.0	
Manufacturing	51.9	94.7	128.2	113.9	
Electricity and water supply	48.1	50.3	80.5	69.9	
<b>Construction</b>	<b>61.8</b>	<b>106.5</b>	<b>125.7</b>	<b>88.6</b>	
<b>Wholesale and retail trade</b>	<b>123.5</b>	<b>147.6</b>	<b>183.8</b>	<b>129.3</b>	
<b>Transport, Storage and Communications</b>	<b>15.2</b>	<b>23.5</b>	<b>52.3</b>	<b>22.2</b>	
<b>Financial intermediation</b>	<b>61.9</b>	<b>55.0</b>	<b>59.6</b>	<b>33.9</b>	
<b>Other services</b>	<b>439.0</b>	<b>404.9</b>	<b>429.6</b>	<b>387.1</b>	
Real estate, renting and business services	149.7	161.0	185.1	172.3	
Community, social and personal services	18.4	17.6	18.0	14.7	
Hotels and restaurants	18.4	14.4	11.9	8.0	
Education	199.6	173.2	180.3	153.3	
Health and social work	52.9	38.7	34.3	38.8	
<b>Public administration and defense</b>	<b>255.5</b>	<b>269.9</b>	<b>309.6</b>	<b>249.7</b>	
<b>Households with employed persons</b>	<b>0.0</b>	<b>0.4</b>	<b>0.7</b>	<b>1.3</b>	
<b>Public owned employed persons</b>	<b>59.9</b>	<b>79.8</b>	<b>74.9</b>	<b>53.4</b>	
Less: FISIM	-79.3	-51.4	-46.5	-45.7	:
Plus: Customs duties	63.0	61.8	81.3	64.7	:
Plus: VAT on imports, net	109.0	83.6	127.3	107.1	:
<b>Gross Domestic Product</b>	<b>1,316.1</b>	<b>1,426.9</b>	<b>1,705.5</b>	<b>1,391.0</b>	

2007-2004

:1-5

**Table 5-1: GDP by Expenditure in Remaining West Bank and Gaza Strip for the Years 2004-2007 at Current Prices**

Value In US\$ Million

Final use	2007	2006	2005	2004	
<b>Final consumption</b>	<b>6,086.4</b>	<b>5,722.1</b>	<b>5,609.1</b>	<b>5,601.5</b>	
Household final consumption	4,848.8	4,662.6	4,579.6	4,400.3	
Government final consumption	999.5	869.7	832.5	1,048.9	
NPISH final consumption	238.1	189.8	197.0	152.3	
<b>Gross capital formation</b>	<b>1,159.1</b>	<b>1,420.2</b>	<b>1,275.5</b>	<b>1,022.3</b>	
Gross fixed capital formation	1,135.2	1,393.6	1,257.1	982.4	
- Buildings	623.7	569.3	691.8	620.0	-
- Non-buildings	511.5	824.3	565.3	362.4	-
Changes in inventories	23.9	26.6	18.4	39.9	
Acquisitions of valuables, net	0.0	0.0	0.0	0.0	
<b>Net exports of goods and services</b>	<b>-2,573.2</b>	<b>-2,523.2</b>	<b>-2,250.2</b>	<b>-2,425.4</b>	
Exports	748.1	678.3	613.3	483.8	
- Goods	643.8	571.8	471.7	412.3	-
- Services	104.3	106.5	141.6	71.5	-
Imports	3,321.3	3,201.5	2,863.5	2,909.2	
- Goods	2,939.0	2,846.8	2,521.2	2,622.1	-
- Services	382.3	354.7	342.3	287.1	-
Net errors and omissions	0.0	0.0	0.0	0.0	
<b>Gross Domestic Product</b>	<b>4,672.3</b>	<b>4,619.1</b>	<b>4,634.4</b>	<b>4,198.4</b>	

2007-2004

:2-5

Table 5-2: GDP by Expenditure in Remaining West Bank for the Years 2004-2007 at Current Prices

Value In US\$ Million

Final use	2007	2006	2005	2004	
<b>Final consumption</b>	<b>4,233.1</b>	<b>3,829.8</b>	<b>3,693.2</b>	<b>3,727.5</b>	
Household final consumption	3,501.9	3,212.2	3,133.3	3,038.7	
Government final consumption	611.5	508.4	456.8	599.2	
NPISH final consumption	119.7	109.2	103.1	89.6	
<b>Gross capital formation</b>	<b>904.6</b>	<b>1,069.1</b>	<b>810.0</b>	<b>659.4</b>	
Gross fixed capital formation	889.8	1,053.3	796.2	640.2	
- Buildings	388.2	368.9	346.8	321.1	-
- Non-buildings	501.6	684.4	449.4	319.1	-
Changes in inventories	14.8	15.8	13.8	19.2	
Acquisitions of valuables, net	0.0	0.0	0.0	0.0	
<b>Net exports of goods and services</b>	<b>-1,781.5</b>	<b>-1,706.7</b>	<b>-1,574.3</b>	<b>-1,579.5</b>	
Exports	694.0	601.3	503.4	410.1	
- Goods	621.4	529.7	408.2	362.0	-
- Services	72.6	71.6	95.2	48.1	-
Imports	2,475.5	2,308.0	2,077.7	1,989.6	
- Goods	2,205.1	2,070.1	1,806.0	1,759.5	-
- Services	270.4	237.9	271.7	230.1	-
Net errors and omissions	0.0	0.0	0.0	0.0	
<b>Gross Domestic Product</b>	<b>3,356.2</b>	<b>3,192.2</b>	<b>2,928.9</b>	<b>2,807.4</b>	

2007-2004

:3-5

Table 5-3: GDP by Expenditure in Gaza Strip for the Years 2004-2007 at Current Prices

Value In US\$ Million

Final use	2007	2006	2005	2004	
<b>Final consumption</b>	<b>1,853.3</b>	<b>1,892.3</b>	<b>1,915.9</b>	<b>1,874.0</b>	
Household final consumption	1,346.9	1,450.4	1,446.3	1,361.6	
Government final consumption	388.0	361.3	375.7	449.7	
NPISH final consumption	118.4	80.6	93.9	62.7	
<b>Gross capital formation</b>	<b>254.5</b>	<b>351.1</b>	<b>465.5</b>	<b>362.9</b>	
Gross fixed capital formation	245.4	340.3	460.9	342.2	
- Buildings	235.5	200.4	345.0	298.9	-
- Non-buildings	9.9	139.9	115.9	43.3	-
Changes in inventories	9.1	10.8	4.6	20.7	
Acquisitions of valuables, net	0.0	0.0	0.0	0.0	
<b>Net exports of goods and services</b>	<b>-791.7</b>	<b>-816.5</b>	<b>-675.9</b>	<b>-845.9</b>	
Exports	54.1	77.0	109.9	73.7	
- Goods	22.4	42.1	63.5	50.3	-
- Services	31.7	34.9	46.4	23.4	-
Imports	845.8	893.5	785.8	919.6	
- Goods	733.9	776.7	715.2	862.6	-
- Services	111.9	116.8	70.6	57.0	-
Net errors and omissions	0.0	0.0	0.0	0.0	
<b>Gross Domestic Product</b>	<b>1,316.1</b>	<b>1,426.9</b>	<b>1,705.5</b>	<b>1,391.0</b>	

2007-2004

:1-6

**Table 6-1: Major National Accounts Variables for Remaining West Bank and Gaza Strip for the Years 2004-2007 at Current Prices**

Value In US\$ Million

Indicator	2007	2006	2005	2004	
<b>Gross Domestic Product (GDP)</b>	<b>4,672.3</b>	<b>4,619.1</b>	<b>4,634.4</b>	<b>4,198.4</b>	
Income vis-a-vis non-residents, net	547.4	427.9	357.8	232.0	
- Compensation of employees, net	379.4	314.3	269.4	205.9	-
- Property income, net	168.0	113.6	88.4	26.1	-
<b>Gross National Income (GNI)</b>	<b>5,219.7</b>	<b>5,047.0</b>	<b>4,992.2</b>	<b>4,430.4</b>	
Current transfers vis-a-vis non-residents, net	2,094.4	1,276.2	1,127.9	720.7	
<b>Gross Disposable Income (GDI)</b>	<b>7,314.1</b>	<b>6,323.2</b>	<b>6,120.1</b>	<b>5,151.1</b>	
Final Consumption	6,086.4	5,722.1	5,609.1	5,601.5	
<b>Savings</b>	<b>1,227.7</b>	<b>601.1</b>	<b>511.0</b>	<b>-450.4</b>	

2007-2004

:2-6

**Table 6-2: Major National Accounts Variables for Remaining West Bank for the Years 2004-2007 at Current Prices**

Value In US\$ Million

Indicator	2007	2006	2005	2004	
<b>Gross Domestic Product (GDP)</b>	<b>3,356.2</b>	<b>3,192.2</b>	<b>2,928.9</b>	<b>2,807.4</b>	
Income vis-a-vis non-residents, net	451.6	348.9	279.2	172.9	
- Compensation of employees, net	335.1	271.2	222.9	158.4	-
- Property income, net	116.5	77.7	56.3	14.5	-
<b>Gross National Income (GNI)</b>	<b>3,807.8</b>	<b>3,541.1</b>	<b>3,208.1</b>	<b>2,980.3</b>	
Current transfers vis-a-vis non-residents, net	1,257.9	768.1	680.3	435.6	
<b>Gross Disposable Income (GDI)</b>	<b>5,065.7</b>	<b>4,309.2</b>	<b>3,888.4</b>	<b>3,415.9</b>	
Final Consumption	4,233.1	3,829.8	3,693.2	3,727.5	
<b>Savings</b>	<b>832.6</b>	<b>479.4</b>	<b>195.2</b>	<b>-311.6</b>	



2007-2004

:3-6

**Table 6-3: Major National Accounts Variables for Gaza Strip for the Years 2004-2007 at Current Prices**

Value In US\$ Million

Indicator	2007	2006	2005	2004	
<b>Gross Domestic Product (GDP)</b>	<b>1,316.1</b>	<b>1,426.9</b>	<b>1,705.5</b>	<b>1,391.0</b>	
Income vis-a-vis non-residents, net	95.8	79.0	78.6	59.1	
- Compensation of employees, net	44.3	43.1	46.5	47.5	-
- Property income, net	51.5	35.9	32.1	11.6	-
<b>Gross National Income (GNI)</b>	<b>1,411.9</b>	<b>1,505.9</b>	<b>1,784.1</b>	<b>1,450.1</b>	
Current transfers vis-a-vis non-residents, net	836.5	508.1	447.6	285.1	
<b>Gross Disposable Income (GDI)</b>	<b>2,248.4</b>	<b>2,014.0</b>	<b>2,231.7</b>	<b>1,735.2</b>	
Final Consumption	1,853.3	1,892.3	1,915.9	1,874.0	
<b>Savings</b>	<b>395.1</b>	<b>121.7</b>	<b>315.8</b>	<b>-138.8</b>	

2007-2004

:1-7

**Table 7-1: GDP Per Capita by Region for the Years 2004-2007 at Current Prices**

Value In US\$

Region	2007	2006	2005	2004	
Remaining West Bank and Gaza Strip	1,337.0	1,363.0	1,410.0	1,317.0	
Remaining West Bank	1,599.1	1,565.0	1,477.4	1,457.1	
Gaza Strip	943.0	1,057.5	1,307.5	1,103.1	

2007-2004

:2-7

**Table 7-2: GNI Per Capita by Region for the Years 2004-2007 at Current Prices**

Value In US\$

Region	2007	2006	2005	2004	
Remaining West Bank and Gaza Strip	1,493.7	1,489.2	1,518.9	1,389.8	
Remaining West Bank	1,814.3	1,736.1	1,618.3	1,546.8	
Gaza Strip	1,011.6	1,116.1	1,367.8	1,149.9	

2007-2004

:3-7

**Table 7-3: GNDI Per Capita by Region for the Years 2004-2007 at Current Prices**

Value In US\$

Region	2007	2006	2005	2004	
Remaining West Bank and Gaza Strip	2,093.0	1,865.8	1,862.0	1,615.9	
Remaining West Bank	2,413.6	2,112.6	1,961.4	1,772.9	
Gaza Strip	1,610.9	1,492.7	1,710.9	1,376.0	

**(2007-2004)**  
**Annual National Accounts Tables at Constant Prices**  
**(2004-2007)**



2004 : 2007-2004

:1-8

**Table 8-1: Percentage Contribution to GDP in Remaining West Bank and Gaza Strip by Economic Activity for the Years 2004-2007 at Constant Prices: 2004 is the Base Year**

Economic Activity	2007	2006	2005	2004	
<b>Agriculture and fishing</b>	<b>5.6</b>	<b>5.6</b>	<b>5.2</b>	<b>7.1</b>	
<b>Mining, manufacturing, electr. and water</b>	<b>13.8</b>	<b>15.0</b>	<b>17.0</b>	<b>17.1</b>	
Mining and quarrying	0.4	0.5	0.6	0.7	
Manufacturing	9.9	11.7	13.0	13.2	
Electricity and water supply	3.5	2.8	3.4	3.2	
<b>Construction</b>	<b>6.2</b>	<b>7.2</b>	<b>6.8</b>	<b>5.7</b>	
<b>Wholesale and retail trade</b>	<b>9.2</b>	<b>9.6</b>	<b>9.4</b>	<b>9.8</b>	
<b>Transport, Storage and Communications</b>	<b>7.5</b>	<b>6.6</b>	<b>5.8</b>	<b>6.1</b>	
<b>Financial intermediation</b>	<b>5.2</b>	<b>4.3</b>	<b>4.4</b>	<b>3.6</b>	
<b>Other services</b>	<b>22.2</b>	<b>19.6</b>	<b>23.0</b>	<b>22.8</b>	
Real estate, renting and business services	7.6	7.0	10.3	10.4	
Community, social and personal services	1.5	1.1	1.2	0.9	
Hotels and restaurants	0.7	0.9	0.8	0.7	
Education	9.6	7.9	8.2	7.8	
Health and social work	2.8	2.7	2.5	3.0	
<b>Public administration and defense</b>	<b>13.9</b>	<b>15.7</b>	<b>14.1</b>	<b>14.3</b>	
<b>Households with employed persons</b>	<b>0.1</b>	<b>0.1</b>	<b>0.0</b>	<b>0.1</b>	
<b>Public owned employed persons</b>	<b>5.8</b>	<b>4.5</b>	<b>3.4</b>	<b>3.7</b>	
Less: FISIM	-5.7	-3.0	-2.6	-2.8	:
Plus: Customs duties	6.3	6.7	5.9	4.8	:
Plus: VAT on imports, net	9.9	8.1	7.6	7.7	:
<b>Total</b>	<b>100</b>	<b>100</b>	<b>100</b>	<b>100</b>	

2004 : 2007-2004

:2-8

**Table 8-2: Percentage Contribution to GDP in Remaining West Bank by Economic Activity for the Years 2004-2007 at Constant Prices: 2004 is the Base Year**

Economic Activity	2007	2006	2005	2004	
<b>Agriculture and fishing</b>	<b>5.0</b>	<b>5.0</b>	<b>5.0</b>	<b>6.5</b>	
<b>Mining, manufacturing, electr. and water</b>	<b>16.0</b>	<b>17.4</b>	<b>19.7</b>	<b>19.1</b>	
Mining and quarrying	0.5	0.7	1.0	1.1	
Manufacturing	12.2	14.2	16.2	15.7	
Electricity and water supply	3.3	2.5	2.5	2.3	
<b>Construction</b>	<b>6.7</b>	<b>7.3</b>	<b>6.3</b>	<b>5.3</b>	
<b>Wholesale and retail trade</b>	<b>9.8</b>	<b>9.7</b>	<b>8.9</b>	<b>10.1</b>	
<b>Transport, Storage and Communications</b>	<b>9.8</b>	<b>8.7</b>	<b>7.3</b>	<b>8.3</b>	
<b>Financial intermediation</b>	<b>5.1</b>	<b>4.3</b>	<b>4.9</b>	<b>4.1</b>	
<b>Other services</b>	<b>17.6</b>	<b>16.7</b>	<b>21.5</b>	<b>20.3</b>	
Real estate, renting and business services	6.6	6.6	9.8	9.5	
Community, social and personal services	1.4	1.0	1.3	0.8	
Hotels and restaurants	0.6	0.9	0.9	0.8	
Education	6.6	5.7	6.8	6.2	
Health and social work	2.4	2.5	2.7	3.0	
<b>Public administration and defense</b>	<b>11.8</b>	<b>12.8</b>	<b>11.3</b>	<b>12.4</b>	
<b>Households with employed persons</b>	<b>0.1</b>	<b>0.1</b>	<b>0.0</b>	<b>0.1</b>	
<b>Public owned employed persons</b>	<b>5.5</b>	<b>3.9</b>	<b>3.3</b>	<b>3.6</b>	
Less: FISIM	-4.7	-2.6	-2.4	-2.4	:
Plus: Customs duties	6.8	7.6	6.4	5.0	:
Plus: VAT on imports, net	10.5	9.1	7.8	7.6	:
<b>Total</b>	<b>100</b>	<b>100</b>	<b>100</b>	<b>100</b>	

2004

:

2007-2004

:3-8

**Table 8-3: Percentage Contribution to GDP in Gaza Strip by Economic Activity for the Years 2004-2007 at Constant Prices: 2004 is the Base Year**

Economic Activity	2007	2006	2005	2004	
<b>Agriculture and fishing</b>	<b>6.9</b>	<b>6.7</b>	<b>5.6</b>	<b>8.3</b>	
<b>Mining, manufacturing, electr. and water</b>	<b>8.3</b>	<b>9.7</b>	<b>12.4</b>	<b>13.2</b>	
Mining and quarrying	0.0	0.0	0.0	0.0	
Manufacturing	4.2	6.3	7.5	8.2	
Electricity and water supply	4.1	3.4	4.9	5.0	
<b>Construction</b>	<b>4.6</b>	<b>7.0</b>	<b>7.7</b>	<b>6.4</b>	
<b>Wholesale and retail trade</b>	<b>7.7</b>	<b>9.3</b>	<b>10.2</b>	<b>9.3</b>	
<b>Transport, Storage and Communications</b>	<b>1.7</b>	<b>1.9</b>	<b>3.2</b>	<b>1.6</b>	
<b>Financial intermediation</b>	<b>5.5</b>	<b>4.1</b>	<b>3.6</b>	<b>2.4</b>	
<b>Other services</b>	<b>34.1</b>	<b>26.2</b>	<b>25.5</b>	<b>27.8</b>	
Real estate, renting and business services	10.4	7.8	11.0	12.4	
Community, social and personal services	1.9	1.3	1.1	1.1	
Hotels and restaurants	0.8	1.0	0.6	0.6	
Education	17.2	12.9	10.7	11.0	
Health and social work	3.8	3.2	2.1	2.7	
<b>Public administration and defense</b>	<b>19.4</b>	<b>22.2</b>	<b>18.8</b>	<b>18.0</b>	
<b>Households with employed persons</b>	<b>0.0</b>	<b>0.0</b>	<b>0.0</b>	<b>0.1</b>	
<b>Public owned employed persons</b>	<b>6.7</b>	<b>5.9</b>	<b>3.7</b>	<b>3.8</b>	
Less: FISIM	-8.1	-3.8	-2.8	-3.3	:
Plus: Customs duties	4.8	4.6	4.6	4.7	:
Plus: VAT on imports, net	8.4	6.2	7.5	7.7	:
<b>Total</b>	<b>100</b>	<b>100</b>	<b>100</b>	<b>100</b>	

2004

:

2007-2004

:1-9

**Table 9-1: Output in Remaining West Bank and Gaza Strip by Economic Activity for the Years 2004-2007 at Constant Prices: 2004 is the Base Year**

Value In US\$ Million

Economic Activity	2007	2006	2005	2004	
<b>Agriculture and fishing</b>	<b>581.9</b>	<b>649.7</b>	<b>698.0</b>	<b>619.5</b>	
<b>Mining, manufacturing, electr. and water</b>	<b>1,435.0</b>	<b>1,692.5</b>	<b>1,819.7</b>	<b>1,681.1</b>	
Mining and quarrying	30.0	35.8	48.0	63.4	
Manufacturing	1,209.2	1,485.2	1,499.3	1,348.9	
Electricity and water supply	195.8	171.5	272.4	268.8	
<b>Construction</b>	<b>598.4</b>	<b>586.5</b>	<b>693.3</b>	<b>771.9</b>	
<b>Wholesale and retail trade</b>	<b>609.5</b>	<b>630.6</b>	<b>666.0</b>	<b>633.7</b>	
<b>Transport, Storage and Communications</b>	<b>454.3</b>	<b>423.7</b>	<b>414.0</b>	<b>347.6</b>	
<b>Financial intermediation</b>	<b>276.7</b>	<b>226.7</b>	<b>263.8</b>	<b>194.3</b>	
<b>Other services</b>	<b>1,176.5</b>	<b>1,046.2</b>	<b>1,310.5</b>	<b>1,141.5</b>	
Real estate, renting and business services	371.0	324.1	493.5	460.9	
Community, social and personal services	101.4	87.5	101.8	59.2	
Hotels and restaurants	47.6	97.9	98.2	68.5	
Education	470.6	367.9	416.0	358.6	
Health and social work	185.9	168.8	201.0	194.3	
<b>Public administration and defense</b>	<b>958.8</b>	<b>960.0</b>	<b>1,080.4</b>	<b>1,006.3</b>	
<b>Households with employed persons</b>	<b>3.6</b>	<b>2.9</b>	<b>1.8</b>	<b>2.9</b>	
<b>Public owned employed persons</b>	<b>425.5</b>	<b>348.5</b>	<b>264.1</b>	<b>336.6</b>	
Less: FISIM	0.0	0.0	0.0	0.0	:
Plus: Customs duties	283.9	286.0	265.9	204.0	:
Plus: VAT on imports, net	450.1	350.9	347.7	323.1	:
<b>Gross Output</b>	<b>7,254.2</b>	<b>7,204.2</b>	<b>7,825.2</b>	<b>7,262.5</b>	



2004

:

2007-2004

:2-9

**Table 9-2: Output in Remaining West Bank by Economic Activity for the Years 2004-2007 at Constant Prices: 2004 is the Base Year**

Value In US\$ Million

Economic Activity	2007	2006	2005	2004	
<b>Agriculture and fishing</b>	<b>433.8</b>	<b>475.4</b>	<b>511.0</b>	<b>440.3</b>	
<b>Mining, manufacturing, electr. and water</b>	<b>1,232.4</b>	<b>1,349.8</b>	<b>1,333.0</b>	<b>1,258.9</b>	
Mining and quarrying	30.0	35.8	48.0	63.4	
Manufacturing	1,067.3	1,198.1	1,136.8	1,049.7	
Electricity and water supply	135.1	115.9	148.2	145.8	
<b>Construction</b>	<b>443.6</b>	<b>391.8</b>	<b>425.0</b>	<b>485.9</b>	
<b>Wholesale and retail trade</b>	<b>448.1</b>	<b>437.4</b>	<b>412.0</b>	<b>423.5</b>	
<b>Transport, Storage and Communications</b>	<b>420.8</b>	<b>382.6</b>	<b>323.5</b>	<b>305.2</b>	
<b>Financial intermediation</b>	<b>194.0</b>	<b>158.9</b>	<b>184.9</b>	<b>150.4</b>	
<b>Other services</b>	<b>680.8</b>	<b>624.5</b>	<b>770.7</b>	<b>685.5</b>	
Real estate, renting and business services	233.7	211.1	296.9	282.0	
Community, social and personal services	66.2	56.1	62.8	36.8	
Hotels and restaurants	30.8	65.9	63.2	45.7	
Education	236.5	183.4	217.2	194.6	
Health and social work	113.6	108.0	130.6	126.4	
<b>Public administration and defense</b>	<b>564.7</b>	<b>535.6</b>	<b>553.7</b>	<b>582.1</b>	
<b>Households with employed persons</b>	<b>3.6</b>	<b>2.5</b>	<b>1.1</b>	<b>1.6</b>	
<b>Public owned employed persons</b>	<b>276.6</b>	<b>206.4</b>	<b>147.4</b>	<b>188.7</b>	
Less: FISIM	0.0	0.0	0.0	0.0	:
Plus: Customs duties	222.8	224.5	188.0	139.3	:
Plus: VAT on imports, net	343.9	268.2	223.9	216.0	:
<b>Gross Output</b>	<b>5,265.1</b>	<b>5,057.6</b>	<b>5,074.2</b>	<b>4,877.4</b>	

2004

:

2007-2004

:3-9

**Table 9-3: Output in Gaza Strip by Economic Activity for the Years 2004-2007 at Constant Prices: 2004 is the Base Year**

Value In US\$ Million

Economic Activity	2007	2006	2005	2004	
<b>Agriculture and fishing</b>	<b>148.1</b>	<b>174.3</b>	<b>187.0</b>	<b>179.2</b>	
<b>Mining, manufacturing, electr. and water</b>	<b>202.6</b>	<b>342.7</b>	<b>486.7</b>	<b>422.2</b>	
Mining and quarrying	0.0	0.0	0.0	0.0	
Manufacturing	141.9	287.1	362.5	299.2	
Electricity and water supply	60.7	55.6	124.2	123.0	
<b>Construction</b>	<b>154.8</b>	<b>194.7</b>	<b>268.3</b>	<b>286.0</b>	
<b>Wholesale and retail trade</b>	<b>161.4</b>	<b>193.2</b>	<b>254.0</b>	<b>210.2</b>	
<b>Transport, Storage and Communications</b>	<b>33.5</b>	<b>41.1</b>	<b>90.5</b>	<b>42.4</b>	
<b>Financial intermediation</b>	<b>82.7</b>	<b>67.8</b>	<b>78.9</b>	<b>43.9</b>	
<b>Other services</b>	<b>495.7</b>	<b>421.7</b>	<b>539.8</b>	<b>456.0</b>	
Real estate, renting and business services	137.3	113.0	196.6	178.9	
Community, social and personal services	35.2	31.4	39.0	22.4	
Hotels and restaurants	16.8	32.0	35.0	22.8	
Education	234.1	184.5	198.8	164.0	
Health and social work	72.3	60.8	70.4	67.9	
<b>Public administration and defense</b>	<b>394.1</b>	<b>424.4</b>	<b>526.7</b>	<b>424.2</b>	
<b>Households with employed persons</b>	<b>0.0</b>	<b>0.4</b>	<b>0.7</b>	<b>1.3</b>	
<b>Public owned employed persons</b>	<b>148.9</b>	<b>142.1</b>	<b>116.7</b>	<b>147.9</b>	
Less: FISIM	0.0	0.0	0.0	0.0	:
Plus: Customs duties	61.1	61.5	77.9	64.7	:
Plus: VAT on imports, net	106.2	82.7	123.8	107.1	:
<b>Gross Output</b>	<b>1,989.1</b>	<b>2,146.6</b>	<b>2,751.0</b>	<b>2,385.1</b>	

2004 : 2007-2004

:1-10

**Table 10-1: Intermediate Consumption in Remaining West Bank and Gaza Strip by Economic Activity for the Years 2004-2007 at Constant Prices: 2004 is the Base Year**

Value In US\$ Million

Economic Activity	2007	2006	2005	2004	
<b>Agriculture and fishing</b>	<b>329.7</b>	<b>409.4</b>	<b>461.8</b>	<b>322.8</b>	
<b>Mining, manufacturing, electr. and water</b>	<b>808.6</b>	<b>1,043.9</b>	<b>1,044.8</b>	<b>962.1</b>	
Mining and quarrying	12.4	14.3	20.4	33.7	
Manufacturing	759.2	979.8	907.5	794.9	
Electricity and water supply	37.0	49.8	116.9	133.5	
<b>Construction</b>	<b>319.3</b>	<b>274.2</b>	<b>383.1</b>	<b>533.5</b>	
<b>Wholesale and retail trade</b>	<b>192.3</b>	<b>215.6</b>	<b>238.5</b>	<b>221.3</b>	
<b>Transport, Storage and Communications</b>	<b>113.2</b>	<b>138.2</b>	<b>148.8</b>	<b>91.2</b>	
<b>Financial intermediation</b>	<b>41.5</b>	<b>41.9</b>	<b>63.3</b>	<b>44.1</b>	
<b>Other services</b>	<b>168.6</b>	<b>196.9</b>	<b>263.0</b>	<b>184.3</b>	
Real estate, renting and business services	24.2	21.3	27.7	22.2	
Community, social and personal services	31.5	38.7	47.2	22.7	
Hotels and restaurants	17.6	57.6	60.5	38.3	
Education	35.6	28.6	40.3	32.5	
Health and social work	59.7	50.7	87.3	68.6	
<b>Public administration and defense</b>	<b>326.4</b>	<b>280.9</b>	<b>438.9</b>	<b>407.6</b>	
<b>Households with employed persons</b>	<b>0.0</b>	<b>0.0</b>	<b>0.0</b>	<b>0.0</b>	
<b>Public owned employed persons</b>	<b>161.8</b>	<b>152.0</b>	<b>107.0</b>	<b>182.9</b>	
Less: FISIM	257.1	128.9	116.5	114.3	:
Plus: Customs duties	0.0	0.0	0.0	0.0	:
Plus: VAT on imports, net	0.0	0.0	0.0	0.0	:
<b>Gross Intermediate Consumption</b>	<b>2,718.5</b>	<b>2,881.9</b>	<b>3,265.7</b>	<b>3,064.1</b>	

2004

:

2007-2004

:2-10

**Table 10-2: Intermediate Consumption in Remaining West Bank by Economic Activity for the Years 2004-2007 at Constant Prices: 2004 is the Base Year**

Value In US\$ Million

Economic Activity	2007	2006	2005	2004	
<b>Agriculture and fishing</b>	<b>269.2</b>	<b>325.4</b>	<b>368.3</b>	<b>259.2</b>	
<b>Mining, manufacturing, electr. and water</b>	<b>711.8</b>	<b>832.7</b>	<b>767.2</b>	<b>723.7</b>	
Mining and quarrying	12.4	14.3	20.4	33.7	
Manufacturing	670.6	777.9	671.3	609.6	
Electricity and water supply	28.8	40.5	75.5	80.4	
<b>Construction</b>	<b>223.3</b>	<b>174.2</b>	<b>244.9</b>	<b>336.1</b>	
<b>Wholesale and retail trade</b>	<b>128.6</b>	<b>147.6</b>	<b>155.4</b>	<b>140.4</b>	
<b>Transport, Storage and Communications</b>	<b>101.0</b>	<b>122.3</b>	<b>112.3</b>	<b>71.0</b>	
<b>Financial intermediation</b>	<b>29.1</b>	<b>29.4</b>	<b>44.4</b>	<b>34.1</b>	
<b>Other services</b>	<b>106.4</b>	<b>127.0</b>	<b>152.8</b>	<b>115.4</b>	
Real estate, renting and business services	18.9	13.1	16.0	15.6	
Community, social and personal services	20.4	25.0	26.5	15.0	
Hotels and restaurants	11.1	39.5	36.1	23.5	
Education	19.7	16.6	22.2	21.8	
Health and social work	36.3	32.8	52.0	39.5	
<b>Public administration and defense</b>	<b>179.0</b>	<b>154.5</b>	<b>229.4</b>	<b>233.1</b>	
<b>Households with employed persons</b>	<b>0.0</b>	<b>0.0</b>	<b>0.0</b>	<b>0.0</b>	
<b>Public owned employed persons</b>	<b>98.3</b>	<b>89.5</b>	<b>52.9</b>	<b>88.4</b>	
Less: FISIM	154.2	77.3	69.9	68.6	:
Plus: Customs duties	0.0	0.0	0.0	0.0	:
Plus: VAT on imports, net	0.0	0.0	0.0	0.0	:
<b>Gross Intermediate Consumption</b>	<b>2,000.9</b>	<b>2,079.9</b>	<b>2,197.5</b>	<b>2,070.0</b>	

2004

:

2007-2004

:3-10

**Table 10-3: Intermediate Consumption in Gaza Strip by Economic Activity for the Years 2004-2007 at Constant Prices: 2004 is the Base Year**

Value In US\$ Million

Economic Activity	2007	2006	2005	2004	
<b>Agriculture and fishing</b>	<b>60.5</b>	<b>84.0</b>	<b>93.5</b>	<b>63.6</b>	
<b>Mining, manufacturing, electr. and water</b>	<b>96.8</b>	<b>211.2</b>	<b>277.6</b>	<b>238.4</b>	
Mining and quarrying	0.0	0.0	0.0	0.0	
Manufacturing	88.6	201.9	236.2	185.3	
Electricity and water supply	8.2	9.3	41.4	53.1	
<b>Construction</b>	<b>96.0</b>	<b>100.0</b>	<b>138.2</b>	<b>197.4</b>	
<b>Wholesale and retail trade</b>	<b>63.7</b>	<b>68.0</b>	<b>83.1</b>	<b>80.9</b>	
<b>Transport, Storage and Communications</b>	<b>12.2</b>	<b>15.9</b>	<b>36.5</b>	<b>20.2</b>	
<b>Financial intermediation</b>	<b>12.4</b>	<b>12.5</b>	<b>18.9</b>	<b>10.0</b>	
<b>Other services</b>	<b>62.2</b>	<b>69.9</b>	<b>110.2</b>	<b>68.9</b>	
Real estate, renting and business services	5.3	8.2	11.7	6.6	
Community, social and personal services	11.1	13.7	20.7	7.7	
Hotels and restaurants	6.5	18.1	24.4	14.8	
Education	15.9	12.0	18.1	10.7	
Health and social work	23.4	17.9	35.3	29.1	
<b>Public administration and defense</b>	<b>147.4</b>	<b>126.4</b>	<b>209.5</b>	<b>174.5</b>	
<b>Households with employed persons</b>	<b>0.0</b>	<b>0.0</b>	<b>0.0</b>	<b>0.0</b>	
<b>Public owned employed persons</b>	<b>63.5</b>	<b>62.5</b>	<b>54.1</b>	<b>94.5</b>	
Less: FISIM	102.9	51.6	46.6	45.7	:
Plus: Customs duties	0.0	0.0	0.0	0.0	:
Plus: VAT on imports, net	0.0	0.0	0.0	0.0	:
<b>Gross Intermediate Consumption</b>	<b>717.6</b>	<b>802.0</b>	<b>1,068.2</b>	<b>994.1</b>	

2004 :

2007-2004

:1-11

**Table 11-1: Value Added in Remaining West Bank and Gaza Strip by Economic Activity for the Years 2004-2007 at Constant Prices: 2004 is the Base Year**

Value In US\$ Million

Economic Activity	2007	2006	2005	2004	
<b>Agriculture and fishing</b>	<b>252.2</b>	<b>240.3</b>	<b>236.2</b>	<b>296.7</b>	
<b>Mining, manufacturing, electr. and water</b>	<b>626.4</b>	<b>648.6</b>	<b>774.9</b>	<b>719.0</b>	
Mining and quarrying	17.6	21.5	27.6	29.7	
Manufacturing	450.0	505.4	591.8	554.0	
Electricity and water supply	158.8	121.7	155.5	135.3	
<b>Construction</b>	<b>279.1</b>	<b>312.3</b>	<b>310.2</b>	<b>238.4</b>	
<b>Wholesale and retail trade</b>	<b>417.2</b>	<b>415.0</b>	<b>427.5</b>	<b>412.4</b>	
<b>Transport, Storage and Communications</b>	<b>341.1</b>	<b>285.5</b>	<b>265.2</b>	<b>256.4</b>	
<b>Financial intermediation</b>	<b>235.2</b>	<b>184.8</b>	<b>200.5</b>	<b>150.2</b>	
<b>Other services</b>	<b>1,007.9</b>	<b>849.3</b>	<b>1,047.5</b>	<b>957.2</b>	
Real estate, renting and business services	346.8	302.8	465.8	438.7	
Community, social and personal services	69.9	48.8	54.6	36.5	
Hotels and restaurants	30.0	40.3	37.7	30.2	
Education	435.0	339.3	375.7	326.1	
Health and social work	126.2	118.1	113.7	125.7	
<b>Public administration and defense</b>	<b>632.4</b>	<b>679.1</b>	<b>641.5</b>	<b>598.7</b>	
<b>Households with employed persons</b>	<b>3.6</b>	<b>2.9</b>	<b>1.8</b>	<b>2.9</b>	
<b>Public owned employed persons</b>	<b>263.7</b>	<b>196.5</b>	<b>157.1</b>	<b>153.7</b>	
Less: FISIM	-257.1	-128.9	-116.5	-114.3	:
Plus: Customs duties	283.9	286.0	265.9	204.0	:
Plus: VAT on imports, net	450.1	350.9	347.7	323.1	:
<b>Gross Domestic Product</b>	<b>4,535.7</b>	<b>4,322.3</b>	<b>4,559.5</b>	<b>4,198.4</b>	

2004

:

2007-2004

:2-11

**Table 11-2: Value Added in Remaining West Bank by Economic Activity for the Years 2004-2007 at Constant Prices: 2004 is the Base Year**

Value In US\$ Million

Economic Activity	2007	2006	2005	2004	
<b>Agriculture and fishing</b>	<b>164.6</b>	<b>150.0</b>	<b>142.7</b>	<b>181.1</b>	
<b>Mining, manufacturing, electr. and water</b>	<b>520.6</b>	<b>517.1</b>	<b>565.8</b>	<b>535.2</b>	
Mining and quarrying	17.6	21.5	27.6	29.7	
Manufacturing	396.7	420.2	465.5	440.1	
Electricity and water supply	106.3	75.4	72.7	65.4	
<b>Construction</b>	<b>220.3</b>	<b>217.6</b>	<b>180.1</b>	<b>149.8</b>	
<b>Wholesale and retail trade</b>	<b>319.5</b>	<b>289.8</b>	<b>256.6</b>	<b>283.1</b>	
<b>Transport, Storage and Communications</b>	<b>319.8</b>	<b>260.3</b>	<b>211.2</b>	<b>234.2</b>	
<b>Financial intermediation</b>	<b>164.9</b>	<b>129.5</b>	<b>140.5</b>	<b>116.3</b>	
<b>Other services</b>	<b>574.4</b>	<b>497.5</b>	<b>617.9</b>	<b>570.1</b>	
Real estate, renting and business services	214.8	198.0	280.9	266.4	
Community, social and personal services	45.8	31.1	36.3	21.8	
Hotels and restaurants	19.7	26.4	27.1	22.2	
Education	216.8	166.8	195.0	172.8	
Health and social work	77.3	75.2	78.6	86.9	
<b>Public administration and defense</b>	<b>385.7</b>	<b>381.1</b>	<b>324.3</b>	<b>349.0</b>	
<b>Households with employed persons</b>	<b>3.6</b>	<b>2.5</b>	<b>1.1</b>	<b>1.6</b>	
<b>Public owned employed persons</b>	<b>178.3</b>	<b>116.9</b>	<b>94.5</b>	<b>100.3</b>	
Less: FISIM	-154.2	-77.3	-69.9	-68.6	:
Plus: Customs duties	222.8	224.5	188.0	139.3	:
Plus: VAT on imports, net	343.9	268.2	223.9	216.0	:
<b>Gross Domestic Product</b>	<b>3,264.2</b>	<b>2,977.7</b>	<b>2,876.7</b>	<b>2,807.4</b>	

2004

:

2007-2004

:3-11

**Table 11-3: Value Added in Gaza Strip by Economic Activity for the Years 2004-2007 at Constant Prices: 2004 is the Base Year**

Value In US\$ Million

Economic Activity	2007	2006	2005	2004	
<b>Agriculture and fishing</b>	<b>87.6</b>	<b>90.3</b>	<b>93.5</b>	<b>115.6</b>	
<b>Mining, manufacturing, electr. and water</b>	<b>105.8</b>	<b>131.5</b>	<b>209.1</b>	<b>183.8</b>	
Mining and quarrying	0.0	0.0	0.0	0.0	
Manufacturing	53.3	85.2	126.3	113.9	
Electricity and water supply	52.5	46.3	82.8	69.9	
<b>Construction</b>	<b>58.8</b>	<b>94.7</b>	<b>130.1</b>	<b>88.6</b>	
<b>Wholesale and retail trade</b>	<b>97.7</b>	<b>125.2</b>	<b>170.9</b>	<b>129.3</b>	
<b>Transport, Storage and Communications</b>	<b>21.3</b>	<b>25.2</b>	<b>54.0</b>	<b>22.2</b>	
<b>Financial intermediation</b>	<b>70.3</b>	<b>55.3</b>	<b>60.0</b>	<b>33.9</b>	
<b>Other services</b>	<b>433.5</b>	<b>351.8</b>	<b>429.6</b>	<b>387.1</b>	
Real estate, renting and business services	132.0	104.8	184.9	172.3	
Community, social and personal services	24.1	17.7	18.3	14.7	
Hotels and restaurants	10.3	13.9	10.6	8.0	
Education	218.2	172.5	180.7	153.3	
Health and social work	48.9	42.9	35.1	38.8	
<b>Public administration and defense</b>	<b>246.7</b>	<b>298.0</b>	<b>317.2</b>	<b>249.7</b>	
<b>Households with employed persons</b>	<b>0.0</b>	<b>0.4</b>	<b>0.7</b>	<b>1.3</b>	
<b>Public owned employed persons</b>	<b>85.4</b>	<b>79.6</b>	<b>62.6</b>	<b>53.4</b>	
Less: FISIM	-102.9	-51.6	-46.6	-45.7	:
Plus: Customs duties	61.1	61.5	77.9	64.7	:
Plus: VAT on imports, net	106.2	82.7	123.8	107.1	:
<b>Gross Domestic Product</b>	<b>1,271.5</b>	<b>1,344.6</b>	<b>1,682.8</b>	<b>1,391.0</b>	



2004

:

2007-2004

:1-12

**Table 12-1: GDP by Expenditure in Remaining West Bank and Gaza Strip for the Years 2004-2007 at Constant Prices: 2004 is the Base Year**

Value In US\$ Million

Final use	2007	2006	2005	2004	
<b>Final consumption</b>	<b>5,394.1</b>	<b>5,256.9</b>	<b>5,497.5</b>	<b>5,601.5</b>	
Household final consumption	4,373.6	4,197.5	4,467.5	4,400.3	
Government final consumption	849.8	870.4	833.3	1,048.9	
NPISH final consumption	170.7	189.0	196.7	152.3	
<b>Gross capital formation</b>	<b>1,310.0</b>	<b>1,347.2</b>	<b>1,265.7</b>	<b>1,022.3</b>	
Gross fixed capital formation	1,288.1	1,322.9	1,247.9	982.4	
- Buildings	625.1	492.4	691.9	620.0	-
- Non-buildings	663.0	830.5	556.0	362.4	-
Changes in inventories	21.9	24.3	17.8	39.9	
Acquisitions of valuables, net	0.0	0.0	0.0	0.0	
<b>Net exports of goods and services</b>	<b>-2,168.4</b>	<b>-2,281.8</b>	<b>-2,203.7</b>	<b>-2,425.4</b>	
Exports	600.8	629.0	597.7	483.8	
- Goods	518.3	535.2	457.5	412.3	-
- Services	82.5	93.8	140.2	71.5	-
Imports	2,769.2	2,910.8	2,801.4	2,909.2	
- Goods	2,093.0	2,203.8	2,466.5	2,622.1	-
- Services	676.2	707.0	334.9	287.1	-
Net errors and omissions	0.0	0.0	0.0	0.0	
<b>Gross Domestic Product</b>	<b>4,535.7</b>	<b>4,322.3</b>	<b>4,559.5</b>	<b>4,198.4</b>	

2004

:

2007-2004

:2-12

**Table 12-2: GDP by Expenditure in Remaining West Bank for the Years 2004-2007 at Constant Prices: 2004 is the Base Year**

Value In US\$ Million

Final use	2007	2006	2005	2004	
<b>Final consumption</b>	<b>3,865.8</b>	<b>3,504.7</b>	<b>3,616.9</b>	<b>3,727.5</b>	
Household final consumption	3,146.7	2,805.8	3,056.7	3,038.7	
Government final consumption	632.7	599.6	457.2	599.2	
NPISH final consumption	86.4	99.3	103.0	89.6	
<b>Gross capital formation</b>	<b>920.7</b>	<b>780.8</b>	<b>802.3</b>	<b>659.4</b>	
Gross fixed capital formation	902.6	762.0	788.9	640.2	
- Buildings	490.0	319.0	346.9	321.1	-
- Non-buildings	412.6	443.0	442.0	319.1	-
Changes in inventories	18.1	18.8	13.4	19.2	
Acquisitions of valuables, net	0.0	0.0	0.0	0.0	
<b>Net exports of goods and services</b>	<b>-1,522.3</b>	<b>-1,307.8</b>	<b>-1,542.5</b>	<b>-1,579.5</b>	
Exports	569.5	579.7	490.2	410.1	
- Goods	489.9	495.5	395.9	362.0	-
- Services	79.6	84.2	94.3	48.1	-
Imports	2,091.8	1,887.5	2,032.7	1,989.6	
- Goods	1,579.4	1,427.4	1,766.9	1,759.5	-
- Services	512.4	460.1	265.8	230.1	-
Net errors and omissions	0.0	0.0	0.0	0.0	
<b>Gross Domestic Product</b>	<b>3,264.2</b>	<b>2,977.7</b>	<b>2,876.7</b>	<b>2,807.4</b>	

2004

:

2007-2004

:3-12

Table 12-3: GDP by Expenditure in Gaza Strip for the Years 2004-2007 at Constant Prices: 2004 is the Base Year

Value In US\$ Million

Final use	2007	2006	2005	2004	
<b>Final consumption</b>	<b>1,528.3</b>	<b>1,752.2</b>	<b>1,880.6</b>	<b>1,874.0</b>	
Household final consumption	1,226.9	1,391.7	1,410.8	1,361.6	
Government final consumption	217.1	270.8	376.1	449.7	
NPISH final consumption	84.3	89.7	93.7	62.7	
<b>Gross capital formation</b>	<b>389.3</b>	<b>566.4</b>	<b>463.4</b>	<b>362.9</b>	
Gross fixed capital formation	385.5	560.9	459.0	342.2	
- Buildings	135.1	173.4	345.0	298.9	-
- Non-buildings	250.4	387.5	114.0	43.3	-
Changes in inventories	3.8	5.5	4.4	20.7	
Acquisitions of valuables, net	0.0	0.0	0.0	0.0	
<b>Net exports of goods and services</b>	<b>-646.1</b>	<b>-974.0</b>	<b>-661.2</b>	<b>-845.9</b>	
Exports	31.3	49.3	107.5	73.7	
- Goods	28.4	39.7	61.6	50.3	-
- Services	2.9	9.6	45.9	23.4	-
Imports	677.4	1,023.3	768.7	919.6	
- Goods	513.6	776.4	699.6	862.6	-
- Services	163.8	246.9	69.1	57.0	-
Net errors and omissions	0.0	0.0	0.0	0.0	
<b>Gross Domestic Product</b>	<b>1,271.5</b>	<b>1,344.6</b>	<b>1,682.8</b>	<b>1,391.0</b>	

2004

:

2007-2004

:1-13

**Table 13-1: Major National Accounts Variables for Remaining West Bank and Gaza Strip for the Years 2004-2007 at Constant Prices: 2004 is the Base Year**

Value In US\$ Million

Indicator	2007	2006	2005	2004	
<b>Gross Domestic Product (GDP)</b>	<b>4,535.7</b>	<b>4,322.3</b>	<b>4,559.5</b>	<b>4,198.4</b>	
Income vis-a-vis non-residents, net	512.5	397.6	337.4	232.0	
- Compensation of employees, net	344.8	284.6	249.2	205.9	-
- Property income, net	167.7	113.0	88.2	26.1	-
<b>Gross National Income (GNI)</b>	<b>5,048.2</b>	<b>4,719.9</b>	<b>4,896.9</b>	<b>4,430.4</b>	
Current transfers vis-a-vis non-residents, net	2,090.9	1,182.6	1,091.9	720.7	
<b>Gross Disposable Income (GDI)</b>	<b>7,139.1</b>	<b>5,902.5</b>	<b>5,988.8</b>	<b>5,151.1</b>	
Final Consumption	5,394.1	5,256.9	5,497.5	5,601.5	
<b>Savings</b>	<b>1,745.0</b>	<b>645.6</b>	<b>491.3</b>	<b>-450.4</b>	

2004

:

2007-2004

:2-13

**Table 13-2: Major National Accounts Variables for Remaining West Bank for the Years 2004-2007 at Constant Prices: 2004 is the Base Year**

Value In US\$ Million

Indicator	2007	2006	2005	2004	
<b>Gross Domestic Product (GDP)</b>	<b>3,264.2</b>	<b>2,977.7</b>	<b>2,876.7</b>	<b>2,807.4</b>	
Income vis-a-vis non-residents, net	410.2	327.7	269.6	172.9	
- Compensation of employees, net	293.9	250.4	213.4	158.4	-
- Property income, net	116.3	77.3	56.2	14.5	-
<b>Gross National Income (GNI)</b>	<b>3,674.4</b>	<b>3,305.4</b>	<b>3,146.3</b>	<b>2,980.3</b>	
Current transfers vis-a-vis non-residents, net	1,255.8	711.8	658.6	435.6	
<b>Gross Disposable Income (GDI)</b>	<b>4,930.2</b>	<b>4,017.2</b>	<b>3,804.9</b>	<b>3,415.9</b>	
Final Consumption	3,865.8	3,504.7	3,616.9	3,727.5	
<b>Savings</b>	<b>1,064.4</b>	<b>512.5</b>	<b>188.0</b>	<b>-311.6</b>	

2004

:

2007-2004

:3-13

**Table 13-3: Major National Accounts Variables for Gaza Strip for the Years 2004-2007 at Constant Prices: 2004 is the Base Year**

Value In US\$ Million

Indicator	2007	2006	2005	2004	
<b>Gross Domestic Product (GDP)</b>	<b>1,271.5</b>	<b>1,344.6</b>	<b>1,682.8</b>	<b>1,391.0</b>	
Income vis-a-vis non-residents, net	102.3	69.9	67.8	59.1	
- Compensation of employees, net	50.9	34.2	35.8	47.5	-
- Property income, net	51.4	35.7	32.0	11.6	-
<b>Gross National Income (GNI)</b>	<b>1,373.8</b>	<b>1,414.5</b>	<b>1,750.6</b>	<b>1,450.1</b>	
Current transfers vis-a-vis non-residents, net	835.1	470.8	433.3	285.1	
<b>Gross Disposable Income (GDI)</b>	<b>2,208.9</b>	<b>1,885.3</b>	<b>2,183.9</b>	<b>1,735.2</b>	
Final Consumption	1,528.3	1,752.2	1,880.6	1,874.0	
<b>Savings</b>	<b>680.6</b>	<b>133.1</b>	<b>303.3</b>	<b>-138.8</b>	

2004 : 2007-2004 :1-14

**Table 14-1: GDP Per Capita by Region for the Years 2004-2007 at Constant Prices: 2004 is the Base Year**

Value In US\$

Region	2007	2006	2005	2004	
Remaining West Bank and Gaza Strip	1,297.9	1,275.4	1,387.2	1,317.0	
Remaining West Bank	1,555.3	1,459.8	1,451.1	1,457.1	
Gaza Strip	911.0	996.5	1,290.1	1,103.1	

2004 : 2007-2004 :2-14

**Table 14-2: GNI Per Capita by Region for the Years 2004-2007 at Constant Prices: 2004 is the Base Year**

Value In US\$

Region	2007	2006	2005	2004	
Remaining West Bank and Gaza Strip	1,444.6	1,392.7	1,489.9	1,389.8	
Remaining West Bank	1,750.7	1,620.5	1,587.1	1,546.8	
Gaza Strip	984.3	1,048.4	1,342.1	1,149.9	

2004 : 2007-2004 :3-14

**Table 14-3: GNDI Per Capita by Region for the Years 2004-2007 at Constant Prices: 2004 is the Base Year**

Value In US\$

Region	2007	2006	2005	2004	
Remaining West Bank and Gaza Strip	2,042.9	1,741.7	1,822.1	1,615.9	
Remaining West Bank	2,349.1	1,969.5	1,919.3	1,772.9	
Gaza Strip	1,582.6	1,397.3	1,674.3	1,376.0	

**(2007-2004)**  
**Institutional National Accounts Tables at Current  
and Constant Prices (2004-2007)**





2007-2004

:15

**Table 15: Percentage Contribution to GDP by Economic Activity and Institutional Sector in Remaining West Bank and Gaza Strip 2004-2007 at Current Prices**

Economic Activity	2007	2006	2005	2004
<b>Agriculture and fishing</b>	<b>6.3</b>	<b>5.8</b>	<b>5.5</b>	<b>7.1</b>
Households sector	6.3	5.8	5.5	7.1
<b>Mining, manufacturing, electr. and water</b>	<b>12.6</b>	<b>15.5</b>	<b>16.8</b>	<b>17.1</b>
<b>Mining and quarrying</b>	<b>0.3</b>	<b>0.5</b>	<b>0.6</b>	<b>0.7</b>
Households sector	0.2	0.4	0.2	0.3
Non- Financial enterprises sector	0.2	0.1	0.4	0.4
<b>Manufacturing</b>	<b>9.4</b>	<b>12.2</b>	<b>13.0</b>	<b>13.2</b>
Households sector	3.8	8.1	5.2	5.5
NPISH sector	0.0	0.0	0.0	0.0
Non- Financial enterprises sector	5.6	4.0	7.8	7.7
<b>Electricity and water supply</b>	<b>2.9</b>	<b>2.8</b>	<b>3.2</b>	<b>3.2</b>
Households sector	0.1	0.2	0.9	0.2
NPISH sector	0.0	0.0	0.0	0.0
Government sector	1.6	1.4	1.0	1.1
Non- Financial enterprises sector	1.2	1.2	1.3	1.9
<b>Construction</b>	<b>6.5</b>	<b>7.6</b>	<b>6.4</b>	<b>5.7</b>
Households sector	4.1	4.1	3.5	3.9
Non- Financial enterprises sector	2.4	3.5	2.9	1.8
<b>Wholesale and retail trade</b>	<b>11.4</b>	<b>10.6</b>	<b>9.9</b>	<b>9.8</b>
Households sector	7.6	5.6	7.0	6.2
Non- Financial enterprises sector	3.8	5.0	2.9	3.6
<b>Transport, Storage and Communications</b>	<b>6.1</b>	<b>6.0</b>	<b>5.6</b>	<b>6.1</b>
Households sector	1.6	1.9	2.7	1.3
NPISH sector	0.0	0.0	0.0	0.0

2007-2004

:( ) 15

**Table 15 (Cont.): Percentage Contribution to GDP by Economic Activity and Institutional Sector in Remaining West Bank and Gaza Strip  
2004-2007 at Current Prices**

<b>Economic Activity</b>	<b>2007</b>	<b>2006</b>	<b>2005</b>	<b>2004</b>	
Non- Financial enterprises sector	4.5	4.1	2.9	4.8	
<b>Financial intermediation</b>	<b>4.4</b>	<b>4.0</b>	<b>4.3</b>	<b>3.6</b>	
Financial enterprises sector	4.4	4.0	4.3	3.6	
<b>Other services</b>	<b>22.1</b>	<b>21.6</b>	<b>22.6</b>	<b>22.8</b>	
<b>Real estate, renting and business services</b>	<b>8.4</b>	<b>10.1</b>	<b>10.0</b>	<b>10.4</b>	
Households sector	7.7	9.3	9.3	9.6	
NPISH sector	0.1	0.2	0.0	0.0	
Non- Financial enterprises sector	0.6	0.6	0.7	0.8	
<b>Community, social and personal services</b>	<b>1.1</b>	<b>1.0</b>	<b>1.2</b>	<b>0.9</b>	
Households sector	0.5	0.4	0.5	0.4	
NPISH sector	0.5	0.4	0.6	0.4	
Non- Financial enterprises sector	0.1	0.2	0.1	0.1	
<b>Hotels and restaurants</b>	<b>1.2</b>	<b>0.9</b>	<b>0.9</b>	<b>0.7</b>	
Households sector	0.7	0.6	0.6	0.5	
NPISH sector	0.0	0.0	0.0	0.0	
Non- Financial enterprises sector	0.5	0.3	0.3	0.2	
<b>Education</b>	<b>8.5</b>	<b>7.3</b>	<b>8.1</b>	<b>7.8</b>	
Households sector	0.4	0.1	0.1	0.2	
NPISH sector	3.9	4.3	3.3	3.5	
Government sector	3.5	2.6	4.3	3.7	
Non- Financial enterprises sector	0.7	0.3	0.4	0.4	
<b>Health and social work</b>	<b>2.9</b>	<b>2.3</b>	<b>2.4</b>	<b>3.0</b>	
Households sector	0.5	0.3	0.4	0.4	
NPISH sector	0.9	1.0	0.9	1.3	

2007-2004

:( ) 15

**Table 15 (Cont.): Percentage Contribution to GDP by Economic Activity and Institutional Sector in Remaining West Bank and Gaza Strip  
2004-2007 at Current Prices**

<b>Economic Activity</b>	<b>2007</b>	<b>2006</b>	<b>2005</b>	<b>2004</b>	
Government sector	1.3	0.7	0.8	1.2	
Non- Financial enterprises sector	0.2	0.3	0.3	0.1	
<b>Public administration and defense</b>	<b>14.3</b>	<b>13.4</b>	<b>13.5</b>	<b>14.3</b>	
Government sector	14.3	13.4	13.5	14.3	
<b>Households with employed persons</b>	<b>0.1</b>	<b>0.1</b>	<b>0.0</b>	<b>0.1</b>	
Households sector	0.1	0.1	0.0	0.1	
<b>Public owned employed persons</b>	<b>4.2</b>	<b>4.3</b>	<b>4.2</b>	<b>3.7</b>	
Non- Financial enterprises sector	4.2	4.3	4.2	3.7	
<b>Total by Sectors</b>	<b>88.0</b>	<b>88.9</b>	<b>88.8</b>	<b>90.3</b>	
<b>Households sector</b>	<b>33.6</b>	<b>37.0</b>	<b>35.9</b>	<b>35.7</b>	
<b>NPISH sector</b>	<b>5.4</b>	<b>5.9</b>	<b>4.8</b>	<b>5.2</b>	
<b>Government sector</b>	<b>20.7</b>	<b>18.1</b>	<b>19.6</b>	<b>20.3</b>	
<b>Financial enterprises sector</b>	<b>4.4</b>	<b>4.0</b>	<b>4.3</b>	<b>3.6</b>	
<b>Non- Financial enterprises sector</b>	<b>23.9</b>	<b>23.9</b>	<b>24.2</b>	<b>25.5</b>	
Less: FISIM	-4.2	-2.8	-2.5	-2.8	:
Plus: Customs duties	6.3	6.2	6.0	4.8	:
Plus: VAT on imports, net	9.9	7.7	7.7	7.7	:
<b>Total</b>	<b>100</b>	<b>100</b>	<b>100</b>	<b>100</b>	

2007-2004

:16

**Table 16: Output by Economic Activity and Institutional Sector in Remaining West Bank and Gaza Strip 2004-2007 at Current Prices**

Value in US\$ Million

<b>Economic Activity</b>	<b>2007</b>	<b>2006</b>	<b>2005</b>	<b>2004</b>	
<b>Agriculture and fishing</b>	<b>745.0</b>	<b>718.0</b>	<b>720.8</b>	<b>619.5</b>	
Households sector	745.0	718.0	720.8	619.5	
<b>Mining, manufacturing, electr. and water</b>	<b>1,670.9</b>	<b>1,910.7</b>	<b>1,859.3</b>	<b>1,681.1</b>	
<b>Mining and quarrying</b>	<b>32.1</b>	<b>41.6</b>	<b>48.7</b>	<b>63.4</b>	
Households sector	18.2	26.6	12.5	25.2	
Non- Financial enterprises sector	13.9	15.0	36.2	38.2	
<b>Manufacturing</b>	<b>1,436.6</b>	<b>1,680.6</b>	<b>1,537.5</b>	<b>1,348.9</b>	
Households sector	451.4	1,037.8	532.6	576.8	
NPISH sector	5.8	6.7	0.5	0.3	
Non- Financial enterprises sector	979.4	636.1	1,004.4	771.8	
<b>Electricity and water supply</b>	<b>202.2</b>	<b>188.5</b>	<b>273.1</b>	<b>268.8</b>	
Households sector	10.5	13.3	43.6	12.3	
NPISH sector	1.2	0.1	1.5	0.3	
Government sector	111.6	105.2	154.9	151.5	
Non- Financial enterprises sector	78.9	69.9	73.1	104.7	
<b>Construction</b>	<b>708.8</b>	<b>676.4</b>	<b>693.3</b>	<b>771.9</b>	
Households sector	548.6	489.7	520.4	575.7	
Non- Financial enterprises sector	160.2	186.7	172.9	196.2	
<b>Wholesale and retail trade</b>	<b>803.3</b>	<b>750.0</b>	<b>706.7</b>	<b>633.7</b>	
Households sector	577.2	462.7	527.3	440.2	
Non- Financial enterprises sector	226.1	287.3	179.4	193.5	
<b>Transport, Storage and Communications</b>	<b>460.0</b>	<b>455.5</b>	<b>412.6</b>	<b>347.6</b>	
Households sector	172.0	179.3	225.0	143.7	
NPISH sector	0.2	0.0	0.0	0.0	

2007-2004

:( ) 16

**Table 16 (Cont.): Output by Economic Activity and Institutional Sector in Remaining West Bank and Gaza Strip 2004-2007 at Current Prices**

Value in US\$ Million

<b>Economic Activity</b>	<b>2007</b>	<b>2006</b>	<b>2005</b>	<b>2004</b>	
Non- Financial enterprises sector	287.8	276.2	187.6	203.9	
<b>Financial intermediation</b>	<b>265.5</b>	<b>228.0</b>	<b>263.5</b>	<b>194.3</b>	
Financial enterprises sector	265.5	228.0	263.5	194.3	
<b>Other services</b>	<b>1,286.2</b>	<b>1,238.7</b>	<b>1,317.7</b>	<b>1,141.5</b>	
<b>Real estate, renting and business services</b>	<b>422.0</b>	<b>488.7</b>	<b>494.4</b>	<b>460.9</b>	
Households sector	376.4	445.1	453.0	415.9	
NPISH sector	7.0	13.2	2.2	3.4	
Non- Financial enterprises sector	38.6	30.4	39.2	41.6	
<b>Community, social and personal services</b>	<b>93.8</b>	<b>96.2</b>	<b>102.0</b>	<b>59.2</b>	
Households sector	48.0	39.1	42.8	24.7	
NPISH sector	36.2	44.6	49.7	27.2	
Non- Financial enterprises sector	9.6	12.5	9.5	7.3	
<b>Hotels and restaurants</b>	<b>108.4</b>	<b>112.7</b>	<b>103.4</b>	<b>68.5</b>	
Households sector	70.6	84.5	71.9	46.5	
NPISH sector	0.0	0.1	0.0	0.5	
Non- Financial enterprises sector	37.8	28.1	31.5	21.5	
<b>Education</b>	<b>444.7</b>	<b>375.3</b>	<b>416.5</b>	<b>358.6</b>	
Households sector	27.3	10.7	9.7	11.6	
NPISH sector	205.0	218.3	172.5	164.8	
Government sector	175.5	128.7	210.1	161.6	
Non- Financial enterprises sector	36.9	17.6	24.2	20.6	
<b>Health and social work</b>	<b>217.3</b>	<b>165.8</b>	<b>201.4</b>	<b>194.3</b>	
Households sector	42.1	23.4	33.5	21.8	

2007-2004

:( ) 16

**Table 16 (Cont.): Output by Economic Activity and Institutional Sector in Remaining West Bank and Gaza Strip 2004-2007 at Current Prices**

Value in US\$ Million

<b>Economic Activity</b>	<b>2007</b>	<b>2006</b>	<b>2005</b>	<b>2004</b>	
NPISH sector	68.2	67.2	69.1	80.1	
Government sector	87.0	56.0	81.9	86.6	
Non- Financial enterprises sector	20.0	19.2	16.9	5.8	
<b>Public administration and defense</b>	<b>1,164.8</b>	<b>959.6</b>	<b>1,078.7</b>	<b>1,006.3</b>	
Government sector	1,164.8	959.6	1,078.7	1,006.3	
<b>Households with employed persons</b>	<b>3.6</b>	<b>2.9</b>	<b>1.8</b>	<b>2.9</b>	
Households sector	3.6	2.9	1.8	2.9	
<b>Public owned employed persons</b>	<b>386.5</b>	<b>372.7</b>	<b>351.6</b>	<b>336.6</b>	
Non- Financial enterprises sector	386.5	372.7	351.6	336.6	
<b>Total by Sectors</b>	<b>7,494.6</b>	<b>7,312.5</b>	<b>7,406.0</b>	<b>6,735.4</b>	
<b>Households sector</b>	<b>3,090.9</b>	<b>3,533.1</b>	<b>3,194.9</b>	<b>2,916.8</b>	
<b>NPISH sector</b>	<b>323.6</b>	<b>350.2</b>	<b>295.5</b>	<b>276.6</b>	
<b>Government sector</b>	<b>1,538.9</b>	<b>1,249.5</b>	<b>1,525.6</b>	<b>1,406.0</b>	
<b>Financial enterprises sector</b>	<b>265.5</b>	<b>228.0</b>	<b>263.5</b>	<b>194.3</b>	
<b>Non- Financial enterprises sector</b>	<b>2,275.7</b>	<b>1,951.7</b>	<b>2,126.5</b>	<b>1,941.7</b>	
Less: FISIM	0.0	0.0	0.0	0.0	:
Plus: Customs duties	292.8	287.2	277.4	204.0	:
Plus: VAT on imports, net	462.6	354.7	357.6	323.1	:
<b>Output</b>	<b>8,250.0</b>	<b>7,954.4</b>	<b>8,041.0</b>	<b>7,262.5</b>	

2007-2004

:17

**Table 17: Intermediate Consumption by Economic Activity and Institutional Sector in Remaining West Bank and Gaza Strip 2004-2007, at Current Prices**

Value in US\$ Million

Economic Activity	2007	2006	2005	2004	
<b>Agriculture and fishing</b>	<b>452.2</b>	<b>450.5</b>	<b>467.4</b>	<b>322.8</b>	
Households sector	452.2	450.5	467.4	322.8	
<b>Mining, manufacturing, electr. and water</b>	<b>1,082.6</b>	<b>1,193.6</b>	<b>1,081.5</b>	<b>962.1</b>	
<b>Mining and quarrying</b>	<b>17.8</b>	<b>18.9</b>	<b>21.1</b>	<b>33.7</b>	
Households sector	8.4	8.0	4.1	12.3	
Non- Financial enterprises sector	9.4	10.9	17.0	21.4	
<b>Manufacturing</b>	<b>998.7</b>	<b>1,116.7</b>	<b>936.2</b>	<b>794.9</b>	
Households sector	273.7	661.5	291.2	346.5	
NPISH sector	4.6	5.5	0.2	0.1	
Non- Financial enterprises sector	720.4	449.7	644.8	448.3	
<b>Electricity and water supply</b>	<b>66.1</b>	<b>58.0</b>	<b>124.2</b>	<b>133.5</b>	
Households sector	3.7	5.1	2.8	2.9	
NPISH sector	0.8	0.0	0.1	0.2	
Government sector	36.8	38.6	107.0	107.2	
Non- Financial enterprises sector	24.8	14.3	14.3	23.2	
<b>Construction</b>	<b>404.3</b>	<b>323.5</b>	<b>395.4</b>	<b>533.5</b>	
Households sector	354.8	299.0	358.5	410.0	
Non- Financial enterprises sector	49.5	24.5	36.9	123.5	
<b>Wholesale and retail trade</b>	<b>269.6</b>	<b>260.6</b>	<b>245.9</b>	<b>221.3</b>	
Households sector	222.2	204.1	202.7	178.4	
Non- Financial enterprises sector	47.4	56.5	43.2	42.9	
<b>Transport, Storage and Communications</b>	<b>173.3</b>	<b>179.8</b>	<b>154.2</b>	<b>91.2</b>	
Households sector	97.5	92.3	101.5	91.2	
NPISH sector	0.1	0.0	0.0	0.0	
Non- Financial enterprises sector	75.7	87.5	52.7	0.0	

2007-2004

:( ) 17

**Table 17(Cont.): Intermediate Consumption by Economic Activity and Institutional Sector in Remaining West Bank and Gaza Strip 2004-2007, at Current Prices**

Value in US\$ Million

<b>Economic Activity</b>	<b>2007</b>	<b>2006</b>	<b>2005</b>	<b>2004</b>	
<b>Financial intermediation</b>	<b>58.5</b>	<b>44.1</b>	<b>64.1</b>	<b>44.1</b>	
Financial enterprises sector	58.5	44.1	64.1	44.1	
<b>Other services</b>	<b>252.4</b>	<b>238.5</b>	<b>269.5</b>	<b>184.3</b>	
<b>Real estate, renting and business services</b>	<b>29.2</b>	<b>24.3</b>	<b>28.3</b>	<b>22.2</b>	
Households sector	17.5	17.7	18.7	11.9	
NPISH sector	3.0	2.7	1.4	1.4	
Non- Financial enterprises sector	8.7	3.9	8.2	8.9	
<b>Community, social and personal services</b>	<b>40.4</b>	<b>47.8</b>	<b>48.2</b>	<b>22.7</b>	
Households sector	24.8	21.8	20.6	8.7	
NPISH sector	12.5	20.6	21.3	11.5	
Non- Financial enterprises sector	3.1	5.4	6.3	2.5	
<b>Hotels and restaurants</b>	<b>53.9</b>	<b>71.1</b>	<b>61.9</b>	<b>38.3</b>	
Households sector	41.7	55.8	46.3	25.8	
NPISH sector	0.0	0.0	0.0	0.2	
Non- Financial enterprises sector	12.2	15.3	15.6	12.3	
<b>Education</b>	<b>48.3</b>	<b>35.8</b>	<b>41.5</b>	<b>32.5</b>	
Households sector	9.3	4.1	3.2	4.2	
NPISH sector	23.6	19.4	17.7	19.9	
Government sector	10.8	8.0	16.8	4.7	
Non- Financial enterprises sector	4.6	4.3	3.8	3.7	
<b>Health and social work</b>	<b>80.6</b>	<b>59.5</b>	<b>89.6</b>	<b>68.6</b>	
Households sector	16.8	10.7	15.1	4.4	
NPISH sector	24.2	20.4	27.9	27.1	
Government sector	31.1	22.4	42.7	36.1	
Non- Financial enterprises sector	8.5	6.0	3.9	1.0	



2007-2004

:( ) 17

**Table 17 (Cont.): Intermediate Consumption by Economic Activity and Institutional Sector in Remaining West Bank and Gaza Strip 2004-2007, at Current Prices**

Value in US\$ Million

<b>Economic Activity</b>	<b>2007</b>	<b>2006</b>	<b>2005</b>	<b>2004</b>	
<b>Public administration and defense</b>	<b>494.4</b>	<b>342.8</b>	<b>453.1</b>	<b>407.6</b>	
Government sector	494.4	342.8	453.1	407.6	
<b>Households with employed persons</b>	<b>0.0</b>	<b>0.0</b>	<b>0.0</b>	<b>0.0</b>	
Households sector	0.0	0.0	0.0	0.0	
<b>Public owned employed persons</b>	<b>192.1</b>	<b>173.3</b>	<b>159.1</b>	<b>182.9</b>	
Non- Financial enterprises sector	192.1	173.3	159.1	182.9	
<b>Total by Sectors</b>	<b>3,379.4</b>	<b>3,206.7</b>	<b>3,290.2</b>	<b>2,949.8</b>	
<b>Households sector</b>	<b>1,522.6</b>	<b>1,830.6</b>	<b>1,532.1</b>	<b>1,419.1</b>	
<b>NPISH sector</b>	<b>68.8</b>	<b>68.6</b>	<b>68.6</b>	<b>60.4</b>	
<b>Government sector</b>	<b>573.1</b>	<b>411.8</b>	<b>619.6</b>	<b>555.6</b>	
<b>Financial enterprises sector</b>	<b>58.5</b>	<b>44.1</b>	<b>64.1</b>	<b>44.1</b>	
<b>Non- Financial enterprises sector</b>	<b>1,156.4</b>	<b>851.6</b>	<b>1,005.8</b>	<b>870.6</b>	
Less: FISIM	198.3	128.6	116.4	114.3	:
Plus: Customs duties	0.0	0.0	0.0	0.0	:
Plus: VAT on imports, net	0.0	0.0	0.0	0.0	:
<b>Intermediate Consumption</b>	<b>3,577.7</b>	<b>3,335.3</b>	<b>3,406.6</b>	<b>3,064.1</b>	

2007-2004

:18

**Table 18: Gross Domestic Product by Economic Activity and Institutional Sector in Remaining West Bank and Gaza Strip 2004-2007, at Current Prices**

Value in US\$ Million

Economic Activity	2007	2006	2005	2004	
<b>Agriculture and fishing</b>	<b>292.8</b>	<b>267.5</b>	<b>253.4</b>	<b>296.7</b>	
Households sector	292.8	267.5	253.4	296.7	
<b>Mining, manufacturing, electr. and water</b>	<b>588.3</b>	<b>717.1</b>	<b>777.8</b>	<b>719.0</b>	
<b>Mining and quarrying</b>	<b>14.3</b>	<b>22.7</b>	<b>27.6</b>	<b>29.7</b>	
Households sector	9.8	18.6	8.4	12.9	
Non- Financial enterprises sector	4.5	4.1	19.2	16.8	
<b>Manufacturing</b>	<b>437.9</b>	<b>563.9</b>	<b>601.3</b>	<b>554.0</b>	
Households sector	177.7	376.3	241.4	230.3	
NPISH sector	1.2	1.2	0.3	0.2	
Non- Financial enterprises sector	259	186.4	359.6	323.5	
<b>Electricity and water supply</b>	<b>136.1</b>	<b>130.5</b>	<b>148.9</b>	<b>135.3</b>	
Households sector	6.8	8.2	40.8	9.4	
NPISH sector	0.4	0.1	1.4	0.1	
Government sector	74.8	66.6	47.9	44.3	
Non- Financial enterprises sector	54.1	55.6	58.8	81.5	
<b>Construction</b>	<b>304.5</b>	<b>352.9</b>	<b>297.9</b>	<b>238.4</b>	
Households sector	193.8	190.7	161.9	165.7	
Non- Financial enterprises sector	110.7	162.2	136.0	72.7	
<b>Wholesale and retail trade</b>	<b>533.7</b>	<b>489.4</b>	<b>460.8</b>	<b>412.4</b>	
Households sector	355.0	258.6	324.6	261.8	
Non- Financial enterprises sector	178.7	230.8	136.2	150.6	
<b>Transport, Storage and Communications</b>	<b>286.7</b>	<b>275.7</b>	<b>258.4</b>	<b>256.4</b>	
Households sector	74.5	87.0	123.5	52.5	
NPISH sector	0.1	0.0	0.0	0.0	
Non- Financial enterprises sector	212.1	188.7	134.9	203.9	

2007-2004

:( ) 18

**Table 18 (Cont.): Gross Domestic Product by Economic Activity and Institutional Sector in Remaining West Bank and Gaza Strip 2004-2007, at Current Prices**

Value in US\$ Million

<b>Economic Activity</b>	<b>2007</b>	<b>2006</b>	<b>2005</b>	<b>2004</b>	
<b>Financial intermediation</b>	<b>207.0</b>	<b>183.9</b>	<b>199.4</b>	<b>150.2</b>	
Financial enterprises sector	207.0	183.9	199.4	150.2	
<b>Other services</b>	<b>1033.8</b>	<b>1000.2</b>	<b>1048.2</b>	<b>957.2</b>	
<b>Real estate, renting and business services</b>	<b>392.8</b>	<b>464.4</b>	<b>466.1</b>	<b>438.7</b>	
Households sector	358.9	427.4	434.3	404.0	
NPISH sector	4.0	10.5	0.8	2.0	
Non- Financial enterprises sector	29.9	26.5	31.0	32.7	
<b>Community, social and personal services</b>	<b>53.4</b>	<b>48.4</b>	<b>53.8</b>	<b>36.5</b>	
Households sector	23.2	17.3	22.2	16.0	
NPISH sector	23.7	24.0	28.4	15.7	
Non- Financial enterprises sector	6.5	7.1	3.2	4.8	
<b>Hotels and restaurants</b>	<b>54.5</b>	<b>41.6</b>	<b>41.5</b>	<b>30.2</b>	
Households sector	28.9	28.7	25.6	20.7	
NPISH sector	0.0	0.1	0.0	0.3	
Non- Financial enterprises sector	25.6	12.8	15.9	9.2	
<b>Education</b>	<b>396.4</b>	<b>339.5</b>	<b>375.0</b>	<b>326.1</b>	
Households sector	18.0	6.6	6.5	7.4	
NPISH sector	181.4	198.9	154.8	144.9	
Government sector	164.7	120.7	193.3	156.9	
Non- Financial enterprises sector	32.3	13.3	20.4	16.9	
<b>Health and social work</b>	<b>136.7</b>	<b>106.3</b>	<b>111.8</b>	<b>125.7</b>	
Households sector	25.3	12.7	18.4	17.4	
NPISH sector	44.0	46.8	41.2	53.0	
Government sector	55.9	33.6	39.2	50.5	
Non- Financial enterprises sector	11.5	13.2	13.0	4.8	

2007-2004

:( ) 18

**Table 18 (Cont.): Gross Domestic Product by Economic Activity and Institutional Sector in Remaining West Bank and Gaza Strip 2004-2007, at Current Prices**

Value in US\$ Million

<b>Economic Activity</b>	<b>2007</b>	<b>2006</b>	<b>2005</b>	<b>2004</b>	
<b>Public administration and defense</b>	<b>670.4</b>	<b>616.8</b>	<b>625.6</b>	<b>598.7</b>	
Government sector	670.4	616.8	625.6	598.7	
<b>Households with employed persons</b>	<b>3.6</b>	<b>2.9</b>	<b>1.8</b>	<b>2.9</b>	
Households sector	3.6	2.9	1.8	2.9	
<b>Public owned employed persons</b>	<b>194.4</b>	<b>199.4</b>	<b>192.5</b>	<b>153.7</b>	
Non- Financial enterprises sector	194.4	199.4	192.5	153.7	
<b>Total by Sectors</b>	<b>4,115.2</b>	<b>4,105.8</b>	<b>4,115.8</b>	<b>3,785.6</b>	
<b>Households sector</b>	<b>1,568.3</b>	<b>1,702.5</b>	<b>1,662.8</b>	<b>1,497.7</b>	
<b>NPISH sector</b>	<b>254.8</b>	<b>281.6</b>	<b>226.9</b>	<b>216.2</b>	
<b>Government sector</b>	<b>965.8</b>	<b>837.7</b>	<b>906.0</b>	<b>850.4</b>	
<b>Financial enterprises sector</b>	<b>207.0</b>	<b>183.9</b>	<b>199.4</b>	<b>150.2</b>	
<b>Non- Financial enterprises sector</b>	<b>1,119.3</b>	<b>1,100.1</b>	<b>1,120.7</b>	<b>1,071.1</b>	
Less: FISIM	-198.3	-128.6	-116.4	-114.3	:
Plus: Customs duties	292.8	287.2	277.4	204.0	:
Plus: VAT on imports, net	462.6	354.7	357.6	323.1	:
<b>Gross Domestic Product</b>	<b>4,672.3</b>	<b>4,619.1</b>	<b>4,634.4</b>	<b>4,198.4</b>	

2004 : 2007-2004

:19

**Table19: Output by Economic Activity and Institutional Sector in Remaining West Bank and Gaza Strip 2004-2007 at Constant Prices: 2004 is the Base Year**

Value in US\$ Million

Economic Activity	2007	2006	2005	2004
<b>Agriculture and fishing</b>	<b>581.9</b>	<b>649.7</b>	<b>698.0</b>	<b>619.5</b>
Households sector	581.9	649.7	698.0	619.5
<b>Mining, manufacturing, electr. and water</b>	<b>1,435.0</b>	<b>1,692.5</b>	<b>1,819.7</b>	<b>1,681.1</b>
<b>Mining and quarrying</b>	<b>30.0</b>	<b>35.8</b>	<b>48.0</b>	<b>63.4</b>
Households sector	17.0	22.9	20.8	25.2
Non- Financial enterprises sector	13.0	12.9	27.2	38.2
<b>Manufacturing</b>	<b>1,209.2</b>	<b>1,485.2</b>	<b>1,499.3</b>	<b>1,348.9</b>
Households sector	379.9	934.6	444.2	576.8
NPISH sector	4.9	5.7	0.5	0.3
Non- Financial enterprises sector	824.4	544.9	1,054.6	771.8
<b>Electricity and water supply</b>	<b>195.8</b>	<b>171.5</b>	<b>272.4</b>	<b>268.8</b>
Households sector	10.2	12.3	17.4	12.3
NPISH sector	1.2	0.1	0.1	0.3
Government sector	108.0	94.7	233.4	151.5
Non- Financial enterprises sector	76.4	64.4	21.5	104.7
<b>Construction</b>	<b>598.4</b>	<b>586.5</b>	<b>693.3</b>	<b>771.9</b>
Households sector	463.2	454.6	507.1	575.7
Non- Financial enterprises sector	135.2	131.9	186.2	196.2
<b>Wholesale and retail trade</b>	<b>609.5</b>	<b>630.6</b>	<b>666.0</b>	<b>633.7</b>
Households sector	438.0	389.0	387.8	440.2
Non- Financial enterprises sector	171.5	241.6	278.2	193.5
<b>Transport, Storage and Communications</b>	<b>454.3</b>	<b>423.7</b>	<b>414.0</b>	<b>347.6</b>
Households sector	169.9	184.0	185.4	143.7
NPISH sector	0.1	0.0	0.1	0.0

2004 : 2007-2004

:( ) 19

**Table19 (Cont.): Output by Economic Activity and Institutional Sector in Remaining West Bank and Gaza Strip 2004-2007 at Constant Prices:  
2004 is the Base Year**

Value in US\$ Million

Economic Activity	2007	2006	2005	2004	
Non- Financial enterprises sector	284.3	239.7	228.5	203.9	
<b>Financial intermediation</b>	<b>276.7</b>	<b>226.7</b>	<b>263.8</b>	<b>194.3</b>	
Financial enterprises sector	276.7	226.7	263.8	194.3	
<b>Other services</b>	<b>1,176.5</b>	<b>1,046.2</b>	<b>1,310.5</b>	<b>1,141.5</b>	
<b>Real estate, renting and business services</b>	<b>371.0</b>	<b>324.1</b>	<b>493.5</b>	<b>460.9</b>	
Households sector	330.9	306.5	463.4	415.9	
NPISH sector	6.2	5.2	1.7	3.4	
Non- Financial enterprises sector	33.9	12.4	28.4	41.6	
<b>Community, social and personal services</b>	<b>101.4</b>	<b>87.5</b>	<b>101.8</b>	<b>59.2</b>	
Households sector	51.9	35.5	38.7	24.7	
NPISH sector	39.2	40.6	43.4	27.2	
Non- Financial enterprises sector	10.3	11.4	19.7	7.3	
<b>Hotels and restaurants</b>	<b>47.6</b>	<b>97.9</b>	<b>98.2</b>	<b>68.5</b>	
Households sector	31.0	73.5	56.8	46.4	
NPISH sector	0.0	0.0	0.0	0.5	
Non- Financial enterprises sector	16.6	24.4	41.4	21.6	
<b>Education</b>	<b>470.6</b>	<b>367.9</b>	<b>416.0</b>	<b>358.6</b>	
Households sector	28.9	10.2	12.7	11.6	
NPISH sector	217.0	213.0	180.0	164.7	
Government sector	185.6	127.8	190.2	161.7	
Non- Financial enterprises sector	39.1	16.9	33.1	20.6	
<b>Health and social work</b>	<b>185.9</b>	<b>168.8</b>	<b>201.0</b>	<b>194.3</b>	
Households sector	36.0	22.7	14.6	21.8	

2004 : 2007-2004

:( ) 19

**Table19 (Cont.): Output by Economic Activity and Institutional Sector in Remaining West Bank and Gaza Strip 2004-2007 at Constant Prices:  
2004 is the Base Year**

Value in US\$ Million

Economic Activity	2007	2006	2005	2004	
NPISH sector	58.3	67.6	78.5	80.1	
Government sector	74.5	60.0	96.3	86.6	
Non- Financial enterprises sector	17.1	18.5	11.6	5.8	
<b>Public administration and defense</b>	<b>958.8</b>	<b>960.0</b>	<b>1,080.4</b>	<b>1,006.3</b>	
Government sector	958.8	960.0	1,080.4	1,006.3	
<b>Households with employed persons</b>	<b>3.6</b>	<b>2.9</b>	<b>1.8</b>	<b>2.9</b>	
Households sector	3.6	2.9	1.8	2.9	
<b>Public owned employed persons</b>	<b>425.5</b>	<b>348.5</b>	<b>264.1</b>	<b>336.6</b>	
Non- Financial enterprises sector	425.5	348.5	264.1	336.6	
<b>Total by Sectors</b>	<b>6,520.2</b>	<b>6,567.3</b>	<b>7,211.6</b>	<b>6,735.4</b>	
<b>Households sector</b>	<b>2,542.4</b>	<b>3,098.4</b>	<b>2,848.7</b>	<b>2,916.7</b>	
<b>NPISH sector</b>	<b>326.9</b>	<b>332.2</b>	<b>304.3</b>	<b>276.5</b>	
<b>Government sector</b>	<b>1,326.9</b>	<b>1,242.5</b>	<b>1,600.3</b>	<b>1,406.1</b>	
<b>Financial enterprises sector</b>	<b>276.7</b>	<b>226.7</b>	<b>263.8</b>	<b>194.3</b>	
<b>Non- Financial enterprises sector</b>	<b>2,047.3</b>	<b>1,667.5</b>	<b>2,194.5</b>	<b>1,941.8</b>	
Less: FISIM	0.0	0.0	0.0	0.0	:
Plus: Customs duties	283.9	286.0	265.9	204.0	:
Plus: VAT on imports, net	450.1	350.9	347.7	323.1	:
<b>Output</b>	<b>7,254.2</b>	<b>7,204.2</b>	<b>7,825.2</b>	<b>7,262.5</b>	

2004

:

2007-2004

:20

**Table 20: Intermediate Consumption by Economic Activity and Institutional Sector in Remaining West Bank and Gaza Strip 2004-2007 at Constant Prices: 2004 is the Base Year**

Value in US\$ Million

Economic Activity	2007	2006	2005	2004	
<b>Agriculture and fishing</b>	<b>329.7</b>	<b>409.4</b>	<b>461.8</b>	<b>322.8</b>	
Households sector	329.7	409.4	461.8	322.8	
<b>Mining, manufacturing, electr. and water</b>	<b>808.6</b>	<b>1,043.9</b>	<b>1,044.8</b>	<b>962.1</b>	
<b>Mining and quarrying</b>	<b>12.4</b>	<b>14.3</b>	<b>20.4</b>	<b>33.7</b>	
Households sector	5.9	6.0	7.6	12.3	
Non- Financial enterprises sector	6.5	8.3	12.8	21.4	
<b>Manufacturing</b>	<b>759.2</b>	<b>979.8</b>	<b>907.5</b>	<b>794.9</b>	
Households sector	208.1	592.0	255.8	346.5	
NPISH sector	3.5	4.6	0.2	0.1	
Non- Financial enterprises sector	547.6	383.2	651.5	448.3	
<b>Electricity and water supply</b>	<b>37.0</b>	<b>49.8</b>	<b>116.9</b>	<b>133.5</b>	
Households sector	2.1	4.3	3.5	2.9	
NPISH sector	0.5	0.0	0.1	0.2	
Government sector	20.5	33.6	110.5	107.2	
Non- Financial enterprises sector	13.9	11.9	2.8	23.2	
<b>Construction</b>	<b>319.3</b>	<b>274.2</b>	<b>383.1</b>	<b>533.5</b>	
Households sector	280.2	256.4	292.4	410.0	
Non- Financial enterprises sector	39.1	17.8	90.7	123.5	
<b>Wholesale and retail trade</b>	<b>192.3</b>	<b>215.6</b>	<b>238.5</b>	<b>221.3</b>	
Households sector	158.5	168.8	137.5	178.4	
Non- Financial enterprises sector	33.8	46.8	101.0	42.9	
<b>Transport, Storage and Communications</b>	<b>113.2</b>	<b>138.2</b>	<b>148.8</b>	<b>91.2</b>	
Households sector	63.7	80.2	111.5	91.2	
NPISH sector	0.1	0.0	0.1	0.0	
Non- Financial enterprises sector	49.4	58.0	37.2	0.0	



2004 : 2007-2004

:( ) 20

**Table 20 (Cont.): Intermediate Consumption by Economic Activity and Institutional Sector in Remaining West Bank and Gaza Strip 2004-2007 at Constant Prices: 2004 is the Base Year**

Value in US\$ Million

Economic Activity	2007	2006	2005	2004	
<b>Financial intermediation</b>	<b>41.5</b>	<b>41.9</b>	<b>63.3</b>	<b>44.1</b>	
Financial enterprises sector	41.5	41.9	63.3	44.1	
<b>Other services</b>	<b>168.6</b>	<b>196.9</b>	<b>263.0</b>	<b>184.3</b>	
<b>Real estate, renting and business services</b>	<b>24.2</b>	<b>21.3</b>	<b>27.7</b>	<b>22.2</b>	
Households sector	14.4	15.5	14.6	11.9	
NPISH sector	2.5	2.4	1.5	1.4	
Non- Financial enterprises sector	7.3	3.4	11.6	8.9	
<b>Community, social and personal services</b>	<b>31.5</b>	<b>38.7</b>	<b>47.2</b>	<b>22.7</b>	
Households sector	19.3	17.6	19.9	8.7	
NPISH sector	9.8	16.7	18.9	11.5	
Non- Financial enterprises sector	2.4	4.4	8.4	2.5	
<b>Hotels and restaurants</b>	<b>17.6</b>	<b>57.6</b>	<b>60.5</b>	<b>38.3</b>	
Households sector	13.6	45.2	43.9	25.8	
NPISH sector	0.0	0.0	0.0	0.2	
Non- Financial enterprises sector	4.0	12.4	16.6	12.3	
<b>Education</b>	<b>35.6</b>	<b>28.6</b>	<b>40.3</b>	<b>32.5</b>	
Households sector	6.9	3.2	3.9	4.2	
NPISH sector	17.4	15.6	20.3	19.9	
Government sector	7.9	6.5	9.8	4.7	
Non- Financial enterprises sector	3.4	3.3	6.3	3.7	
<b>Health and social work</b>	<b>59.7</b>	<b>50.7</b>	<b>87.3</b>	<b>68.6</b>	
Households sector	12.5	8.6	5.7	4.4	
NPISH sector	17.9	16.8	26.7	27.1	
Government sector	23.0	20.4	46.2	36.1	
Non- Financial enterprises sector	6.3	4.9	8.7	1.0	

2004 : 2007-2004

:( ) 20

**Table 20 (Cont.): Intermediate Consumption by Economic Activity and Institutional Sector in Remaining West Bank and Gaza Strip 2004-2007 at Constant Prices: 2004 is the Base Year**

Value in US\$ Million

<b>Economic Activity</b>	<b>2007</b>	<b>2006</b>	<b>2005</b>	<b>2004</b>	
<b>Public administration and defense</b>	<b>326.4</b>	<b>280.9</b>	<b>438.9</b>	<b>407.6</b>	
Government sector	326.4	280.9	438.9	407.6	
<b>Households with employed persons</b>	<b>0.0</b>	<b>0.0</b>	<b>0.0</b>	<b>0.0</b>	
Households sector	0.0	0.0	0.0	0.0	
<b>Public owned employed persons</b>	<b>161.8</b>	<b>152.0</b>	<b>107.0</b>	<b>182.9</b>	
Non- Financial enterprises sector	161.8	152.0	107.0	182.9	
<b>Total by Sectors</b>	<b>2,461.4</b>	<b>2,753.0</b>	<b>3,149.2</b>	<b>2,949.8</b>	
<b>Households sector</b>	<b>1,114.9</b>	<b>1,607.2</b>	<b>1,358.1</b>	<b>1,419.1</b>	
<b>NPISH sector</b>	<b>51.7</b>	<b>56.1</b>	<b>67.8</b>	<b>60.4</b>	
<b>Government sector</b>	<b>377.8</b>	<b>341.4</b>	<b>605.4</b>	<b>555.6</b>	
<b>Financial enterprises sector</b>	<b>41.5</b>	<b>41.9</b>	<b>63.3</b>	<b>44.1</b>	
<b>Non- Financial enterprises sector</b>	<b>875.5</b>	<b>706.4</b>	<b>1,054.6</b>	<b>870.6</b>	
Less: FISIM	257.1	128.9	116.5	114.3	:
Plus: Customs duties	0.0	0.0	0.0	0.0	:
Plus: VAT on imports, net	0.0	0.0	0.0	0.0	:
<b>Intermediate Consumption</b>	<b>2,718.5</b>	<b>2,881.9</b>	<b>3,265.7</b>	<b>3,064.1</b>	

2004 : 2007-2004

:21

**Table 21: Gross Domestic Product by Economic Activity and Institutional Sector in Remaining West Bank and Gaza Strip 2004-2007 at Constant Prices: 2004 is the Base Year**

Value in US\$ Million

Economic Activity	2007	2006	2005	2004	
<b>Agriculture and fishing</b>	<b>252.2</b>	<b>240.3</b>	<b>236.2</b>	<b>296.7</b>	
Households sector	252.2	240.3	236.2	296.7	
<b>Mining, manufacturing, electr. and water</b>	<b>626.4</b>	<b>648.6</b>	<b>774.9</b>	<b>719.0</b>	
<b>Mining and quarrying</b>	<b>17.6</b>	<b>21.5</b>	<b>27.6</b>	<b>29.7</b>	
Households sector	11.1	16.9	13.2	12.9	
Non- Financial enterprises sector	6.5	4.6	14.4	16.8	
<b>Manufacturing</b>	<b>450.0</b>	<b>505.4</b>	<b>591.8</b>	<b>554.0</b>	
Households sector	171.8	342.6	188.4	230.3	
NPISH sector	1.4	1.1	0.3	0.2	
Non- Financial enterprises sector	276.8	161.7	403.1	323.5	
<b>Electricity and water supply</b>	<b>158.8</b>	<b>121.7</b>	<b>155.5</b>	<b>135.3</b>	
Households sector	8.1	8.0	13.9	9.4	
NPISH sector	0.7	0.1	0.0	0.1	
Government sector	87.5	61.1	122.9	44.3	
Non- Financial enterprises sector	62.5	52.5	18.7	81.5	
<b>Construction</b>	<b>279.1</b>	<b>312.3</b>	<b>310.2</b>	<b>238.4</b>	
Households sector	183.0	198.2	214.7	165.7	
Non- Financial enterprises sector	96.1	114.1	95.5	72.7	
<b>Wholesale and retail trade</b>	<b>417.2</b>	<b>415</b>	<b>427.5</b>	<b>412.4</b>	
Households sector	279.5	220.2	250.3	261.8	
Non- Financial enterprises sector	137.7	194.8	177.2	150.6	
<b>Transport, Storage and Communications</b>	<b>341.1</b>	<b>285.5</b>	<b>265.2</b>	<b>256.4</b>	
Households sector	106.2	103.8	73.9	52.5	
NPISH sector	0.0	0.0	0.0	0.0	
Non- Financial enterprises sector	234.9	181.7	191.3	203.9	

2004 : 2007-2004

:( ) 21

**Table 21 (Cont.): Gross Domestic Product by Economic Activity and Institutional Sector in Remaining West Bank and Gaza Strip 2004-2007 at Constant Prices: 2004 is the Base Year**

Value in US\$ Million

Economic Activity	2007	2006	2005	2004	
<b>Financial intermediation</b>	<b>235.2</b>	<b>184.8</b>	<b>200.5</b>	<b>150.2</b>	
Financial enterprises sector	235.2	184.8	200.5	150.2	
<b>Other services</b>	<b>1007.9</b>	<b>849.3</b>	<b>1047.5</b>	<b>957.2</b>	
<b>Real estate, renting and business services</b>	<b>346.8</b>	<b>302.8</b>	<b>465.8</b>	<b>438.7</b>	
Households sector	316.5	291	448.8	404.0	
NPISH sector	3.7	2.8	0.2	2.0	
Non- Financial enterprises sector	26.6	9.0	16.8	32.7	
<b>Community, social and personal services</b>	<b>69.9</b>	<b>48.8</b>	<b>54.6</b>	<b>36.5</b>	
Households sector	32.6	17.9	18.8	16	
NPISH sector	29.4	23.9	24.5	15.7	
Non- Financial enterprises sector	7.9	7.0	11.3	4.8	
<b>Hotels and restaurants</b>	<b>30.0</b>	<b>40.3</b>	<b>37.7</b>	<b>30.2</b>	
Households sector	17.4	28.3	12.9	20.6	
NPISH sector	0.0	0.0	0.0	0.3	
Non- Financial enterprises sector	12.6	12.0	24.8	9.3	
<b>Education</b>	<b>435</b>	<b>339.3</b>	<b>375.7</b>	<b>326.1</b>	
Households sector	22.0	7.0	8.8	7.4	
NPISH sector	199.6	197.4	159.7	144.8	
Government sector	177.7	121.3	180.4	157	
Non- Financial enterprises sector	35.7	13.6	26.8	16.9	
<b>Health and social work</b>	<b>126.2</b>	<b>118.1</b>	<b>113.7</b>	<b>125.7</b>	
Households sector	23.5	14.1	8.9	17.4	
NPISH sector	40.4	50.8	51.8	53.0	
Government sector	51.5	39.6	50.1	50.5	
Non- Financial enterprises sector	10.8	13.6	2.9	4.8	

2004 : 2007-2004

:( ) 21

**Table 21 (Cont.): Gross Domestic Product by Economic Activity and Institutional Sector in Remaining West Bank and Gaza Strip 2004-2007 at Constant Prices: 2004 is the Base Year**

Value in US\$ Million

Economic Activity	2007	2006	2005	2004	
<b>Public administration and defense</b>	<b>632.4</b>	<b>679.1</b>	<b>641.5</b>	<b>598.7</b>	
Government sector	632.4	679.1	641.5	598.7	
<b>Households with employed persons</b>	<b>3.6</b>	<b>2.9</b>	<b>1.8</b>	<b>2.9</b>	
Households sector	3.6	2.9	1.8	2.9	
<b>Public owned employed persons</b>	<b>263.7</b>	<b>196.5</b>	<b>157.1</b>	<b>153.7</b>	
Non- Financial enterprises sector	263.7	196.5	157.1	153.7	
<b>Total by Sectors</b>	<b>4,058.8</b>	<b>3,814.3</b>	<b>4,062.4</b>	<b>3,785.6</b>	
<b>Households sector</b>	<b>1,427.5</b>	<b>1,491.2</b>	<b>1,490.6</b>	<b>1,497.6</b>	
<b>NPISH sector</b>	<b>275.2</b>	<b>276.1</b>	<b>236.5</b>	<b>216.1</b>	
<b>Government sector</b>	<b>949.1</b>	<b>901.1</b>	<b>994.9</b>	<b>850.5</b>	
<b>Financial enterprises sector</b>	<b>235.2</b>	<b>184.8</b>	<b>200.5</b>	<b>150.2</b>	
<b>Non- Financial enterprises sector</b>	<b>1,171.8</b>	<b>961.1</b>	<b>1,139.9</b>	<b>1,071.2</b>	
Less: FISIM	-257.1	-128.9	-116.5	-114.3	:
Plus: Customs duties	283.9	286.0	265.9	204.0	:
Plus: VAT on imports, net	450.1	350.9	347.7	323.1	:
<b>Gross Domestic Product</b>	<b>4,535.7</b>	<b>4,322.3</b>	<b>4,559.5</b>	<b>4,198.4</b>	



**Palestinian National Authority  
Palestinian Central Bureau of Statistics**

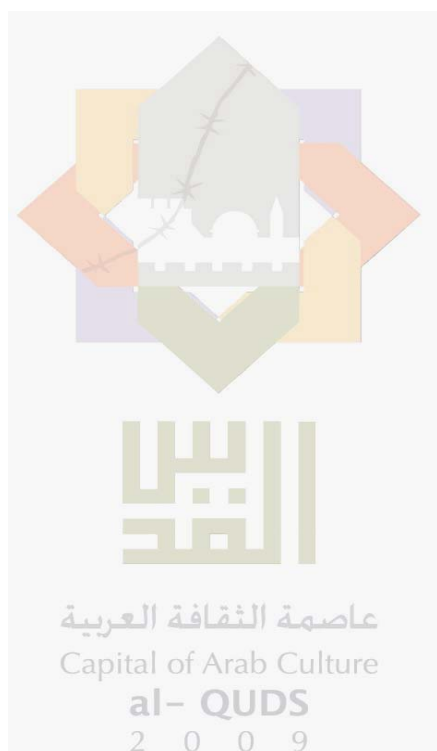
**Palestinian National Accounts**

**National Accounts at Current  
and Constant Prices (2004-2007)**

**March, 2009**

Cover price US\$9

PAGE NUMBERS OF ENGLISH TEXT ARE PRINTED IN SQUARE BRACKETS. TABLES ARE PRINTED IN THE ARABIC ORDER (FROM RIGHT TO LEFT).



This document is prepared in accordance with the standard procedures stated in the Code of Practice for Palestine Official Statistics 2006

© March, 2009.

**All rights reserved.**

**Suggested Citation:**

**Palestinian Central Bureau of Statistics, 2009.** *National Accounts at Current and Constant prices (2004-2007).* Ramallah - Palestine.

All correspondence should be directed to:

**Palestinian Central Bureau of Statistics**

**P.O.Box 1647 Ramallah, Palestine.**

Tel: (972/970) 2 242 6340

Fax: (972/970) 2 242 6343

E-Mail: [diwan@pcbs.gov.ps](mailto:diwan@pcbs.gov.ps)

web-site: <http://www.pcbs.gov.ps>

## **Acknowledgement**

**The Palestinian Central Bureau of Statistics would like to thank all of the sources of data which are important for compiling National Accounts. This includes Ministries and Representatives that participate in gathering the important data used for the successful compilation of the National Accounts.**

**The National Accounts Report at current and constant prices 2004-2007, was prepared by the technical team of PCBS. Funding was provided by the Palestinian National Authority (PNA), and the Core Funding Group (CFG) and European Union for 2008 represented by the Representative Office of Norway to PNA, the Representative Office of Netherlands to PNA, and Swiss Agency for Development and Cooperation (SDC).**

**Printing of this document has been produced with the financial assistance of the European Union. The contents of this document are the sole responsibility of the PCBS.**

**On this occasion, PCBS extends special thanks to the members of the (CFG) for this support in funding this report.**







## Notice for users

The following notes should be considered by users of this report, which includes the Annual National Accounts, in addition to the Institutional National Accounts:

- The economic surveys data for the years 2005-2006 was revised based on the findings of the Population, Housing and Establishment Census 2007 conducted by PCBS.
- Per capita data for the various Macro Economic Indicators for the years 2004-2007 was revised based on the findings of the Population, Housing and Establishment Census 2007.
- Data at constant prices were compiled based on a set of price deflators that have been converted into the US dollar currency. Therefore it is necessary to take into account the change in the exchange rates of the dollar against the Israeli shekel.
- Data at constant prices for the years 2005-2007 are based on the updated base year of 2004, based on the updated base year of price indices, which was the year 1996, where this change to suit the latest changes in the structure of the economy and to suit of international recommendations on the updates of the base year.
- The following table shows the exchange rate (US\$) compared with (NIS) during the years 2004-2007:

Year Indicator	2004	2005	2006	2007
Yearly Average	4.4775	4.4849	4.4545	4.1139

<b>CFG:</b>	Core Funding Group
<b>EC:</b>	European Commission
<b>WB:</b>	World Bank
<b>SDC:</b>	Swiss Agency Development and Cooperation
<b>GDP:</b>	Gross Domestic Product
<b>GNI:</b>	Gross National Income
<b>GNDI:</b>	Gross National Disposable Income
<b>PCBS:</b>	Palestinian Central Bureau of Statistics
<b>PNA:</b>	Palestinian National Authority
<b>RWB:</b>	Remaining West Bank.
<b>RWBGS:</b>	Remaining West Bank and Gaza Strip.
<b>SNA93:</b>	System of National Accounts 1993
<b>G.F.C.F:</b>	Gross Fixed Capital Formation.
<b>PMA:</b>	Palestinian Monetary Authority.
<b>NIS:</b>	New Israeli Shekel
<b>NA:</b>	National Accounts
<b>QNA:</b>	Quarterly National Accounts
<b>INA:</b>	Institutional National Accounts
<b>VAT:</b>	Value Added Tax
<b>WPI:</b>	Wholesale Price Index
<b>PPI:</b>	Producer Price Index
<b>CPI:</b>	Consumer Price Index



## **Team Work**

- **Report Preparation**

Amina Khasib

Amneh Al Natshah

Ahmad Omar

Hiba Hindi

Hani Alahmad

- **Graphic Design**

Ahmad Sawalmeh

- **Dissemination Standerd**

Hanan Janajreh

- **Preliminary Review**

Ibrahim Al Tarsha

Saleh Al Kafri

Mahmoud Jaradat

- **Final Review & Overall Supervision**

Dr. Luay Shabaneh

PCBS President



## **Preface**

The compilation of National Accounts (NA) in any country is considered the peak of efforts exerted in developing a contemporary integrated economic statistical system. This makes the provision of basic data needed for NA among the major goals targeted when launching the various economic statistical programmes.

National Accounts of any country are supposed to give both systematic statistical description of the economy as a whole and a quite detailed map of the transactions between the various parts of the economy and with the rest of the world. In order to be able to measure the growth rates and the economic trends from year to year, and to monitor the performance of the economy and its cycle within a time series, it becomes necessary to have a systematic time series and a comprehensive framework for the data at current and constant prices needed for the compilation of national accounts for the purposes of comparisons and economic analyses.

Since its establishment in 1993, PCBS has adopted the SNA'1993 as a comprehensive framework guiding all statistical efforts in the economic field. The compilation of the revised time series for the national accounts data for the years 2004-2007 required revising many methodologies and hypothesis used in the earlier years when the compilation of such accounts was experimental and affected by the scarcity of required qualified staff. Despite that, National Accounts staff is to be congratulated for surmounting all obstacles and performing this work successfully.

**March, 2009**

**Luay Shabaneh, Ph.D**  
**President**





## Table of Contents

Subject	Page
List of Tables	
Executive Summary	
Chapter One: <b>Introduction</b>	<b>[21]</b>
1.1 Objectives of National Accounts	[22]
1.2 Report Structure	[22]
Chapter Two: <b>Concepts and Definitions</b>	<b>[23]</b>
Chapter Three: <b>Main Findings</b>	<b>[31]</b>
3.1 Annual National Accounts	[31]
3.2 Institutional National Accounts	[32]
Chapter Four: <b>Methodology</b>	<b>[35]</b>
4.1 Annual Basic National Accounts	[35]
4.1.1 Basic National Accounts at Current Prices	[35]
4.1.2 Basic National Accounts at Constant Prices	[38]
4.2 Institutional National Accounts	[38]
Chapter Five: <b>Data Quality</b>	<b>[41]</b>
<b>Tables</b>	<b>69</b>
Annual National Accounts Tables at Current Prices (2004-2007)	71
Annual National Accounts Tables at Constant Prices (2004-2007)	91
Institutional National Accounts Tables at Current and Constant Prices (2004-2007)	111



## List of Tables

### Annual National Accounts Tables at Current Prices (2004-2007)

Table	Page
<b>Table 1-1:</b> Percentage Contribution to GDP in Remaining West Bank and Gaza Strip by Economic Activity for the Years 2004-2007 at Current Prices	<b>73</b>
<b>Table1-2:</b> Percentage Contribution to GDP in Remaining West Bank by Economic Activity for the Years 2004-2007 at Current Prices	<b>74</b>
<b>Table 1-3:</b> Percentage Contribution to GDP in Gaza Strip by Economic Activity for the Years 2004-2007 at Current Prices	<b>75</b>
<b>Table 2-1:</b> Output in Remaining West Bank and Gaza Strip by Economic Activity for the Years 2004-2007 at Current Prices	<b>76</b>
<b>Table 2-2:</b> Output in Remaining West Bank by Economic Activity for the Years 2004-2007 at Current Prices	<b>77</b>
<b>Table 2-3:</b> Output in Gaza Strip by Economic Activity for the Years 2004-2007 at Current Prices	<b>78</b>
<b>Table 3-1:</b> Intermediate Consumption in Remaining West Bank and Gaza Strip by Economic Activity for the Years 2004-2007 at Current Prices	<b>79</b>
<b>Table 3-2:</b> Intermediate Consumption in Remaining West Bank by Economic Activity for the Years 2004-2007 at Current Prices	<b>80</b>
<b>Table 3-3:</b> Intermediate Consumption in Gaza Strip by Economic Activity for the Years 2004-2007 at Current Prices	<b>81</b>
<b>Table 4-1:</b> Value Added in Remaining West Bank and Gaza Strip by Economic Activity for the Years 2004-2007 at Current Prices	<b>82</b>
<b>Table 4-2:</b> Value Added in Remaining West Bank by Economic Activity for the Years 2004-2007 at Current Prices	<b>83</b>
<b>Table 4-3:</b> Value Added in Gaza Strip by Economic Activity for the Years 2004-2007 at Current Prices	<b>84</b>
<b>Table 5-1:</b> GDP by Expenditure in Remaining West Bank and Gaza Strip for the Years 2004-2007 at Current Prices	<b>85</b>
<b>Table 5-2:</b> GDP by Expenditure in Remaining West Bank for the Years 2004-2007 at Current Prices	<b>86</b>
<b>Table 5-3:</b> GDP by Expenditure in Gaza Strip for the Years 2004-2007 at Current Prices	<b>87</b>
<b>Table 6-1:</b> Major National Accounts Variables for Remaining West Bank and Gaza Strip for the Years 2004-2007 at Current Prices	<b>88</b>
<b>Table 6-2:</b> Major National Accounts Variables for Remaining West Bank for the Years 2004-2007 at Current Prices	<b>88</b>
<b>Table 6-3:</b> Major National Accounts Variables for Gaza Strip for the Years 2004-2007 at Current Prices	<b>89</b>

<b>Table</b>	<b>Page</b>
<b>Table 7-1:</b> GDP Per Capita by Region for the Years 2004-2007 at Current Prices	<b>90</b>
<b>Table 7-2:</b> GNI Per Capita by Region for the Years 2004-2007 at Current Prices	<b>90</b>
<b>Table 7-3:</b> GNDI Per Capita by Region for the Years 2004-2007 at Current Prices	<b>90</b>

### **Annual National Accounts Tables at Constant Prices (2004-2007)**

<b>Table</b>	<b>Page</b>
<b>Table 8-1:</b> Percentage Contribution to GDP in Remaining West Bank and Gaza Strip by Economic Activity for the Years 2004-2007 at Constant Prices: 2004 is the Base Year	<b>93</b>
<b>Table 8-2:</b> Percentage Contribution to GDP in Remaining West Bank by Economic Activity for the Years 2004-2007 at Constant Prices: 2004 is the Base Year	<b>94</b>
<b>Table 8-3:</b> Percentage Contribution to GDP in Gaza Strip by Economic Activity for the Years 2004-2007 at Constant Prices: 2004 is the Base Year	<b>95</b>
<b>Table 9-1:</b> Output in Remaining West Bank and Gaza Strip by Economic Activity for the Years 2004-2007 at Constant Prices: 2004 is the Base Year	<b>96</b>
<b>Table 9-2:</b> Output in Remaining West Bank by Economic Activity for the Years 2004-2007 at Constant Prices: 2004 is the Base Year	<b>97</b>
<b>Table 9-3:</b> Output in Gaza Strip by Economic Activity for the Years 2004-2007 at Constant Prices: 2004 is the Base Year	<b>98</b>
<b>Table 10-1:</b> Intermediate Consumption in Remaining West Bank and Gaza Strip by Economic Activity for the Years 2004-2007 at Constant Prices: 2004 is the Base Year	<b>99</b>
<b>Table 10-2:</b> Intermediate Consumption in Remaining West Bank by Economic Activity for the Years 2004-2007 at Constant Prices: 2004 is the Base Year	<b>100</b>
<b>Table 10-3:</b> Intermediate Consumption in Gaza Strip by Economic Activity for the Years 2004-2007 at Constant Prices: 2004 is the Base Year	<b>101</b>
<b>Table 11-1:</b> Value Added in Remaining West Bank and Gaza Strip by Economic Activity for the Years 2004-2007 at Constant Prices: 2004 is the Base Year	<b>102</b>
<b>Table 11-2:</b> Value Added in Remaining West Bank by Economic Activity for the Years 2004-2007 at Constant Prices: 2004 is the Base Year	<b>103</b>
<b>Table 11-3:</b> Value Added in Gaza Strip by Economic Activity for the Years 2004-2007 at Constant Prices: 2004 is the Base Year	<b>104</b>
<b>Table 12-1:</b> GDP by Expenditure in Remaining West Bank and Gaza Strip for the Years 2004-2007 at Constant Prices: 2004 is the Base Year	<b>105</b>

<b>Table</b>	<b>Page</b>
<b>Table 12-2:</b> GDP by Expenditure in Remaining West Bank for the Years 2004-2007 at Constant Prices: 2004 is the Base Year	<b>106</b>
<b>Table 12-3:</b> GDP by Expenditure in Gaza Strip for the Years 2004-2007 at Constant Prices: 2004 is the Base Year	<b>107</b>
<b>Table 13-1:</b> Major National Accounts Variables for Remaining West Bank and Gaza Strip for the Years 2004-2007 at Constant Prices: 2004 is the Base Year	<b>108</b>
<b>Table 13-2:</b> Major National Accounts Variables for Remaining West Bank for the Years 2004-2007 at Constant Prices: 2004 is the Base Year	<b>108</b>
<b>Table 13-3:</b> Major National Accounts Variables for Gaza Strip for the Years 2004-2007 at Constant Prices: 2004 is the Base Year	<b>109</b>
<b>Table 14-1:</b> GDP Per Capita by Region for the Years 2004-2007 at Constant Prices: 2004 is the Base Year	<b>110</b>
<b>Table 14-2:</b> GNI Per Capita by Region for the Years 2004-2007 at Constant Prices: 2004 is the Base Year	<b>110</b>
<b>Table 14-3:</b> GNDI Per Capita by Region for the Years 2004-2007 at Constant Prices: 2004 is the Base Year	<b>110</b>

### **Institutional National Accounts Tables at Current and Constant Prices (2004-2007)**

<b>Table</b>	<b>Page</b>
<b>Table 15:</b> Percentage Contribution to GDP by Economic Activity and Institutional Sector in Remaining West Bank and Gaza Strip 2004-2007 at Current Prices	<b>113</b>
<b>Table 16:</b> Output by Economic Activity and Institutional Sector in Remaining West Bank and Gaza Strip 2004-2007 at Current Prices	<b>116</b>
<b>Table 17:</b> Intermediate Consumption by Economic Activity and Institutional Sector in Remaining West Bank and Gaza Strip 2004-2007 at Current Prices	<b>119</b>
<b>Table 18:</b> Gross Domestic Product by Economic Activity and Institutional Sector in Remaining West Bank and Gaza Strip 2004-2007 at Current Prices	<b>122</b>
<b>Table 19:</b> Output by Economic Activity and Institutional Sector in Remaining West Bank and Gaza Strip 2004-2007 at Constant Prices: 2004 is the Base Year	<b>125</b>
<b>Table 20:</b> Intermediate Consumption by Economic Activity and Institutional Sector in Remaining West Bank and Gaza Strip 2004-2007 at Constant Prices: 2004 is the Base Year	<b>128</b>
<b>Table 21:</b> Gross Domestic Product by Economic Activity and Institutional Sector in Remaining West Bank and Gaza Strip 2004-2007 at Constant Prices: 2004 is the Base Year	<b>131</b>

## Executive Summary

### Introduction:

National Accounts in many countries perform a double goal: firstly, to assist in controlling economic performance and economic policy through an analysis of current economic reaction between different economic sectors; and, secondly, to use the data in a comprehensive framework feeding in microeconomic models that are used in compiling national budgets and macroeconomic planning and economic forecasting.

National Accounts provide a comprehensive picture for all transactions between periods, and of the macroeconomic situation in any country. It consists of a systematic statistical description of the macroeconomic situation and of the relation between different economic sectors within the country, and the macroeconomic relation with the rest of the economic world.

The compilation of National Accounts (NA) in any country is considered to be the peak of efforts toward developing a contemporary integrated economic statistical system. Therefore providing the basic data needed for NA is a major goal when launching the various economic statistical programmes.

### General Palestinian Economic Performance:

#### 1. Annual National Accounts Indicators:

The findings of the National Accounts data at current and constant prices of the Palestinian economy throughout 2004-2007 show that the value of total indicators of the Gross Domestic Product, the Gross National Income, and the Gross National Disposable Income have significant fluctuation, growth and decline caused by the political and economic situation throughout the years, as the table below tells us.

#### Major National Accounts Indicators in Remaining West Bank and Gaza Strip for the Years 2004-2007 at Current and Constant Prices: 2004 is the base year

(Value In US\$ Million)

Indicator	2004	2005	2006	2007
<b>Current Prices</b>				
Gross Domestic Product (GDP)	4,198.4	4,634.4	4,619.1	4,672.3
Gross National Income (GNI)	4,430.4	4,992.2	5,047.0	5,219.7
Gross Disposable Income (GDI)	5,151.1	6,120.1	6,323.2	7,314.1
Saving	-450.4	511.0	601.1	1,227.7
<b>Constant Prices</b>				
Gross Domestic Product (GDP)	4,198.4	4,559.5	4,322.3	4,535.7
Gross National Income (GNI)	4,430.4	4,896.9	4,719.9	5,048.2
Gross Disposable Income (GDI)	5,151.1	5,988.8	5,902.5	7,139.1
Saving	-450.4	491.3	645.6	1,745.0

The contribution of the most prominent economic activities of the Gross Domestic Product at current prices during 2004-2007 findings, show the service nature of the Palestinian economy. The service sector provided the highest contribution to the GDP followed by industrial

activities in some years and public administration and defense in others. The activities of the financial intermediation registered the lowest contribution to the GDP. The following table shows the contribution of various economic activities in the GDP.

**Percentage Contribution to GDP in Remaining West Bank and Gaza Strip by Economic Activity for the years 2004-2007 at Current Prices**

Economic Activity	2004	2005	2006	2007
Agriculture and fishing	7.1	5.5	5.8	6.3
Mining, manufacturing, electr. and water	17.1	16.8	15.5	12.6
Construction	5.7	6.4	7.6	6.5
Wholesale and retail trade	9.8	9.9	10.6	11.4
Transport, Storage and Communications	6.1	5.6	6.0	6.1
Financial intermediation	3.6	4.3	4.0	4.4
services	22.8	22.6	21.6	22.1
Public administration and defense	14.3	13.5	13.4	14.3
Households with employed persons	0.1	0.0	0.1	0.1
Other *	13.4	15.4	15.4	16.2
<b>Total</b>	<b>100</b>	<b>100</b>	<b>100</b>	<b>100</b>

**Notes:**

(\*): Includes Public owned enterprises, FISIM, Customs duties and VAT on imports, net.

Indicators of per capita GDP, GNI, and GDI at current and constant prices in 2004-2007 reflect the significant impact of net income of non residents and the net current transfers of them, as explained in the table below.

**Per Capita of GDP, GNI, GNDI in Remaining West Bank and Gaza Strip for the years 2004-2007 at Current and Constant Prices: 2004 is the base year**

(Value In US\$)

Indicator	2004	2005	2006	2007
<b>Current Prices</b>				
GDP Per Capita	1,317.0	1,410.0	1,363.0	1,337.0
GNI Per Capita	1,389.8	1,518.9	1,489.2	1,493.7
GNDI Per Capita	1,615.9	1,862.0	1,865.8	2,093.0
<b>Constant Prices</b>				
GDP Per Capita	1,317.0	1,387.2	1,275.4	1,298.0
GNI Per Capita	1,389.8	1,489.9	1,392.7	1,444.6
GNDI Per Capita	1,615.9	1,822.1	1,741.7	2,042.9

**2. Gross Domestic Product in Remaining West Bank and Gaza Strip by Institutional Sector for the Years 2004-2007 at Current and Constant Prices:**

The findings at current and constant prices of the Palestinian economy throughout 2004-2007 show that the Households sector provided the highest contribution to the GDP followed by the Non-Financial enterprises sector. The Financial enterprises sector provided the lowest contribution, according to the table below.

**Gross Domestic Product in Remaining West Bank and Gaza Strip by Institutional Sector for the Years 2004-2007 at Current and Constant Prices: 2004 is the base year**

(Value In US\$ Million)

<b>Indicator</b>	<b>2004</b>	<b>2005</b>	<b>2006</b>	<b>2007</b>
<b>Current Prices</b>				
Households sector	1,672.6	1,884.0	1,944.2	1,791.6
NPISH sector	235.3	249.7	307.2	282.0
Government sector	938.1	1,012.3	925.1	1,078.0
Financial enterprises sector	163.8	219.8	202.1	230.2
Non- Financial enterprises sector	1,188.6	1,268.6	1,240.5	1,290.5
<b>Constant Prices</b>				
Households sector	1,672.6	1,875.0	1,578.6	1,595.3
NPISH sector	235.3	252.3	243.8	301.3
Government sector	938.1	1,039.3	1,038.0	1,049.6
Financial enterprises sector	163.8	221.1	205.0	256.7
Non- Financial enterprises sector	1,188.6	1,171.8	1,256.9	1,332.8





## Chapter One

### **Introduction**

The Palestinian Central Bureau of Statistics seeks to develop a contemporary integrated economic statistical system committed to international standards. This makes basic data needed for NA among the major goals targeted when launching the various economic statistical programs. The compilation of National Accounts (NA) is considered the peak of efforts toward developing PCBS; therefore, there is a concentration on capacity building for professional staff in order to perform this difficult task which requires scientific and intellectual and experience in macroeconomic.

National Accounts in many countries perform a double goal: firstly, to assist in controlling economic performance and economic policy through analysis of current economic reaction between different economic sectors; and, secondly, to use the data in a comprehensive framework feeding in microeconomic models that are used in compiling national budgets and macroeconomic planning and economic forecasting.

The issuance of National Accounts provides a comprehensive picture of all transactions taking place in a specific period of time, and therefore gives a comprehensive picture of the macro-economy of any State. It is both a systematic statistical description for the whole economy and of the relationships between the various economic sectors and the rest of the world alike. National Accounts are calculated for sectors and activities which are all parts of the overall system of national accounting. The present status of accounts is a great deal of systematically classified and detailed information in accordance with economic concepts and principles which predict the economic performance of the state.

The process of preparing National Accounts in the Palestinian territories developed continuously since the establishments of the Palestinian Central Bureau of Statistics, from its inception in 1994 until the current process of compiling revised data series for the years 2004-2007 at current and constant prices, in addition to the compilation of Institutional National Accounts parallel with development of methodologies and mechanisms which will be mentioned in details in the methodology chapter.

Since the beginning of compilation National Accounts, SNA'1993 was adopted as a reference for the preparation of National Accounts. Therefore the preparation of Palestinian national accounts did not face a transition process from SNA'1968 process. SNA'1993 is the latest basic and internationally agreed standards for the preparation of the accounts that are interrelated and consistent for macroeconomic analysis. It provides a set of concepts, definitions and classifications in the context of integrated accounting purposes, designed to provide data necessary for decision-taking, policy-making and economic analysis.

## **1.1 Objectives of the National Accounts:**

### **National Accounts endeavor to act in response to the following economic question:**

“Who does what, by which means, for what purpose, with whom in exchange for what, with what changes in stocks?” (System of National Accounts SNA 1993). The National Accounts gives a coherent overview of the performance of the economy of the country. Using a clearly structured statistical framework, it provides a detailed understanding of the different elements of the economic system and their interaction in relation to the rest of the world.

The system of national accounts provides a set of concepts, definitions and detailed information within a broad accounting framework designed for purposes of policy making and decision-taking and for measuring the economic performance of the country. Additionally, they supply economic forms used in budget preparation, total economic planning and economic forecast and analysis.

The National Accounts also provide data used in reports needed for the regional and international organizations. Such data comply with internationally recognized standards that enable researchers to compare outputs of different countries and evaluate the performance of the domestic economy in relation to other similar economies.

To complement the work in conducting a solid database to provide an adequate picture of the Palestinian economy, and committed to international recommendations to extend the scope of compilation of the system of national accounts, PCBS worked on the issuance of national accounts data by institutional sector to create a solid base for studies and economic analysis. National Accounts are considered the reference for compiling institutional national accounts data and the key to any sequence in the system.

## **1.2 Report Structure:**

The report of National Accounts at current and constant prices for the years 2000-2005 is divided into several chapters as follows:

**Chapter One:** Includes introduction about national accounts, which contains the goals and overview about Palestinian National Accounts in addition to the report structure.

**Chapter Two:** Deals with the most important definitions and concepts in this report with simplified explanation of these terms

**Chapter Three:** Presents an overview about the main findings extracted from the report.

**Chapter Four:** Deals with National Accounts methodology at current and constant prices, and Institutional National Accounts.

**Chapter Five:** Deals with data quality of the report.

**Tables:** This report presents the most significant results in the tables at the level of Remaining West Bank and Gaza Strip for the basic National Accounts at current and constant prices, and Institutional National Accounts.

## Concepts and Definitions

### Glossary of Terms According to the System of National Accounts (SNA) 1993

#### 1. General terms

**Statistical unit:**

The United Nations System of National Accounts SNA 1993 defines two main types of statistical units:

**Institutional unit-Enterprise:**

An institutional unit is an economic entity that is capable, in its own right, of owning assets, incurring liabilities and engaging in economic activities and in transactions with other entities.

**Establishment:**

An establishment is an enterprise, or part of an enterprise, which produces only a single group of goods (with the possibility of production from secondary activities) in which the principal productive activity accounts for most of the value added. Breaking down institutional units into establishments serves in creating more consistent statistical units in the productive sense.

**Industry:**

Industry is defined as a group of establishments engaged on the same, or similar, kinds of activity. This definition is in agreement with the International Standard Industrial Classification of All Economic Activities (ISIC). The highest level of aggregation is called the classification group, and the lowest level is called division. The various groups are determined in accordance with the nature of production, its use, and its structure of inputs. The tables in this report include classification standards linked with the Palestinian economy.

**Sector:**

The System of National Accounts divides the society into five institutional sectors: The government, non-profit institutions serving households or NPISHs, financial corporations, households, and non-financial corporations. This Report does not show data on the institutional sectors level; however, most activities can be related to one or two of the mentioned institutional sectors.

**Financial corporations:** This sector includes main financial corporations such as banks and insurance companies and auxiliary financial activities such as money exchanges that keep complete accounting records of their activities.

**Non-financial corporations:** This sector includes all other institutional units, which are principally engaged in the production of market goods and services. Producers of this sector are distinguished from the family sector by keeping a complete set of accounts. A large portion of the value added in the rest of the activities is contributed by this sector.

**Government:** A government is a legal entity established by political processes which have legislative, judicial or executive authority over other institutional units within a given area.

The government in Palestine has two levels: Local and central. Tables show that a significant portion of the economic activity is linked to the government sector; it is marked “government services producers.”<sup>1</sup>

Non-profit institutions serving households (NPISHs): They consist of non-profit institutions. Despite the fact that they produce goods and services, NPISHs do not generate profit or income for their units.

Three main groups of NPISHs may be distinguished: The first group serves the business sector such as chambers of trade and industry, which are classified within the non-financial corporations sector. The second group constitutes part of the government sector such as state-run hospitals. The third type, which aims at serving households, includes professional and trade unions, churches, charitable societies, and privately subsidized organizations.

Household: A household is a small group of persons who share the same living accommodation, who pool some, or all, of their income and wealth and who consume certain types of goods and services collectively, mainly housing and food. Although primarily consumer units, households can engage in any kind of economic activity. All economic activities within the production boundaries and carried out by groups that do not keep complete sets of accounts fall within the household sector. The tables include paid work within the household. The family sector takes part in a number of other activities mentioned in the tables such as agriculture and domestic trade.

#### **Resident:**

Individuals and establishments are residents in a country when they have a center of economic interest in the economic territory of that country. The concept of residence used here is not based on nationality or legal criteria (although it may be similar to concepts of residence).

An individual is said to be resident within the economic territory of a country when such individual maintains a center of economic interest in that territory, that is, when this individual engages, or intends to engage, in economic activities or transactions on a significant scale either indefinitely or over a long period of time, usually interpreted as one year. The rule excludes students, sick people, and foreign diplomats and international organizations other than the country’s residents where such institutions exist. Individuals in the three aforementioned groups are considered non-residents in the economy but residents in their own country regardless of the length of the period of their stay.

Establishments are always considered residents in the country where they operate. This is in line with the residency concept, which defines residency as the center of economic activity. The only exception here is concerning establishments that operate movable equipment such as fishermen who stay in the regional water of a certain country for a limited period in time. Companies that hold limited contracts are also excluded since they stay for the period of the contract with no intention to extend their stay once the project is over. These activities are considered residents in the economy of the country as long as they do not keep independent accounts of their overseas activities. Otherwise, they are considered residents in the country where they keep independent accounts of their activities and pay taxes and possess permission to operate; then their activity is considered resident in the country in question.

---

<sup>1</sup> Many countries produce education, health, social, and public services data under this title in accordance with the System of National Accounts.

**The Remaining West Bank:**

The West Bank excluding that part of Jerusalem, which was annexed after the 1967 occupation by Israel.

**Jerusalem:**

That part of Jerusalem, which was annexed after the 1967 occupation by Israel.

**2. Production concepts:****Production:**

Production is measured during a certain period of time by the value of the final products of goods and services produced by a certain establishment, capable of being provided to other units, although they can be self-consumed or for the purposes of self gross fixed capital formation. Production includes two categories: Final products and the so-called (under operating products), which means products that take a long time to produce such as livestock and establishment works. The value of the majority of goods can be estimated at the moment the production process is completed. However, the production of some goods may exceed the accounting period (such as the case of under operating products). The value of such products is estimated and registered during that accounting period, such as the case of establishment works and winter crops.

**Production can be classified as follows:**

- **Market outputs:** including goods and services sold at market prices such as most of the goods and services sold at warehouses and retail sail stores.
- **Outputs of private account:** including goods and services consumed at the same production unit such as agricultural products, which are produced and consumed at the same farm.
- **Other non-market outputs:** These are the goods and services produced by the government or non-profit institutions that are given free of charge or for minimal prices, including educational services provided by the government.

Outputs are assessed when goods are produced from the production process. Assessment can be carried out in different ways based on taxes and subsidies on product and imports taken into consideration in the assessment (such as calling these taxes indirect taxes, a term used in SNA 1968 but which became obsolete in SNA 1993). SNA 1993 recommends that the assessment be carried out at producers' prices and basic prices. The basic price is the amount receivable by the producer from the purchaser for a unit of a good or service produced as output less any tax payable, and plus any subsidy receivable, on that unit as a consequence of its production. Other taxes on product in SNA 1993 consist mainly of taxes on land and building use and licensing fees. Whatever can be transferred by the government to an establishment in order to reduce pollution, regardless of the size of production, can be considered subsidies receivable by producers before starting the process of production. A producer's price is the basic price plus all taxes and subsidies on production and imports (excluding Value Added Tax VAT), which are known as "taxes and subsidies on product." Most prominently, these are sales tax, custom duties, and duties on imports. Subsidies can take several forms, most commonly subsidies on exports and imports.

SNA 1993 briefly discusses the other two methodologies of assessment: market prices and costing factors. Market prices represent the product's price plus VAT. This methodology has been used in the assessment of the Palestinian National Accounts since it was difficult to exclude VAT. Assessment by costing factors does not include any taxes on production or

imports.<sup>2</sup> However, none of the four assessment methodologies includes transportation margins receivable by producers independently.

### **Financial services:**

The output of financial services can be measured by the total cost of actual and calculated service. This is necessary because financial institutions gain earnings by the difference between interests on loans and deposits. As the calculation of the cost of the actual service is carried out directly, the calculation of the calculated service is more complicated. The calculated cost, (which is called the services of financial intermediation measured indirectly) equals the total of property income payable to financial institutions less gross value of payable interests on these institutions, excluding property income receivable by investment of money of the same institution.

Measuring GDP by using the output or production approach shows the calculated service in minus for an unreal activity in order to avoid duplicated calculation. Since by definition, cost of calculated service is not separated from payable interests, it is impossible to measure the cost of service from expenditure side whether concerning establishments or households. Therefore, cost of calculated service is not included as an expenditure item. Henceforth, the cost of calculated service is shown as intermediate consumption for an unreal activity. This method is used in a number of countries. Since part of the service cost is actually paid by households (whose consumption is classified as final consumption and not intermediate consumption), the assessment of gross intermediate consumption therefore becomes a little higher than the actual; henceforth, the value added becomes a little less than its actual value.

### **Insurance services:**

The output of insurance is measured by the value of the actual and calculated cost of the service provided. In the case of other than life insurance (insurance against accidents such as car insurance, fire, and maritime insurance, etc.) the cost of the calculated service equals: insurance premium with respect to future claims arising from the occurrence of the events specified in the insurance policies during the reference period + the income generated from investing the technical reserves in the reference period – claims payable for the reference period. Income here refers to property income (the income generated from the financial assets such as interests, shares, and stocks and the non-financial producing assets such as land lease) in addition to earnings on owned items.

The output of life insurance is measured in the same way as it consists of the three aforementioned components in addition to the value of reduction of technical reserves which are built by the insurance enterprises to pay the claims of an insurance policy included in the insurance program.

### **Intermediate consumption:**

Intermediate consumption consists of the value of the goods and services consumed as inputs by a process of production. It is measured during a specific period in time in a way similar to measuring production. Intermediate consumption is estimated by purchase price, which is defined as the producers' price plus transportation and wholesale and retail trade margins. The value of the gross intermediate consumption on the level of the total economy is the same whether calculated by purchase or producers' price. However, on the detailed level, the two evaluations vary.

---

<sup>2</sup> SNA 1993 shows clearly that using assessment by costing must be avoided because of the difficulties related to this concept of assessment. See 6.230-6.232 of SNA for more information.

**Value added:**

Value added is a central concept of production and refers to the generated value of any unit that carries out any productive activity. Gross value added is defined as the value of gross production less the value of intermediate consumption. The net value added is defined as the gross value less the value of fixed capital consumption. The net value added reflects the performance of the economy in a better way. However, since it is difficult to measure the fixed capital consumption accurately, the concept of gross value added is used more.

Value added at producers' price is the difference between output at basic prices and the value of the intermediate consumption at purchase price plus taxes (less subsidies) on production. However, if taxes and subsidies are excluded, value added will be obtained in basic prices.

**Gross Domestic Product or GDP:**

Gross Domestic Product or GDP is the summary measure of the output or production during a certain period in time. Estimate of GDP, like the output and the value added, can vary according to taxes and subsidies taken into consideration. GDP is usually estimated at market prices, producers' prices, or basic prices.

There are three approaches to estimate the GDP: Output or Production approach, Expenditure approach, and Income approach. Output or Production approach measures the GDP as the sum of value added of all economic activities.

Since supply is one of the components of the value added of all goods and services, it must equal the sum of money spent on same goods and services. Therefore, the following must apply:

Gross Domestic Product at market prices = final consumption + gross fixed capital formation + change in the inventory + exports (goods and services) – imports (goods and services).

Also, since income is totally linked to the production process, the gross value added is used as an income on the capital (operating surplus) and employment (compensation of employees) plus paid taxes linked to the production processes less subsidies. Henceforth, the following applies:

GDP at market prices = the compensation of employees (paid by resident producers to resident and non-resident employees) + net operating surplus (paid by institutional units that carry out production activities; residents by definition) + fixed capital consumption + taxes (less subsidies) on production and imports.

However, the current Palestinian National Accounts was unable to provide independent estimates on the fixed capital consumption, which required projecting the operating surplus in its gross value, i.e., including fixed capital consumption.

**3. Final consumption groups:****Final consumption:**

Households, government, and non-profit institutions carry out the final consumption registered in the National Accounts. Therefore, the establishments' consumption is not considered final consumption since products used in the production process are considered intermediate consumption.

**Household final consumption** is registered in purchase price. It consists of expenditure on all goods and services excluding expenditure on building and construction, which are considered gross fixed capital formation for the property owners. Renting accommodation is classified as final consumption spent by households.



**Government and non-profit institutions consumption** is dealt with in the SNA 1993 similarly to the way it was dealt with in SNA 1968; it is measured by output value less sales revenues.

Expenditure of the two sectors can be divided into two types: individual and collective. The first includes spending that benefits individuals on medical services, for instance. Collective expenditure has a public nature such as the government's spending on defense and security.

### **Gross capital formation:**

Gross capital formation can be divided into three components: gross fixed capital formation, change in inventory, and net acquisitions of valuables. Henceforth, gross capital formation (or investment) can be defined as the total value of the three aforementioned components. It is measured at purchase price, as is the case with measuring consumption.

Gross capital formation is the value of what producers own less what they spend on new and used capital goods (including households' expenditure on accommodation where households are in this sense producers of accommodation services). In addition to capital improvements on lands and subsoil assets and the cost of property transaction of such assets.<sup>3</sup> Capital goods can be tangible like houses, equipment, machinery...etc. or intangible like copyrights, trademarks, computer programs...etc.

Change in the inventory can be measured by the value of the goods entering the inventory less the value of the goods leaving the inventory. Goods must be valued at current prices i.e. their prices at the time they enter or leave the inventory in order to avoid calculating unreal earnings of ownership. Change in the inventory also includes "under operating products."

Valuables are assets that do not become worn out as time goes by. They are not originally used as basis for production or consumption but kept as a valuable inventory. This includes gold, diamonds, jewelry, paintings, etc. This has not been taken into consideration in the capital formation in the current accounts.

### **Exports and imports of goods and services:**

They include trading goods and services among residents and non-residents and selling, barter, and gifts.

## **4. Income components:**

### **Compensation of employees:**

Compensation of employees is the total remuneration, in cash or in kind, including social security contributions, payable by an enterprise to an employee in return for work done by the latter.

### **Tax on a product:**

Taxes are compulsory cash or in kind payments payable by producers to the general government. Taxes on a product consist of taxes on products payable on goods and services at production, sale, or exchange and other taxes payable on production by resident producers as a result of carrying out the production process.

---

<sup>3</sup> The definition can be simplified; gross fixed capital formation includes capital improvements of all non-produced assets and the costs of property transaction of all non-produced assets. It also includes tangible non-produced assets, land and subsoil assets, water sources, and non-organic cultivated sources. Non-produced assets include copyrights, rental contracts, and purchasable name of fame. In any case, such deals have not been estimated since they are of a neglected value in Palestine.

**Taxes and duties on imports, excluding VAT:**

Taxes and duties on imports consist of taxes on goods and services that become payable at the moment when the goods cross the national or customs frontiers of the economic territory.

Other import taxes (excluding VAT) include sales tax, excise (imposed on certain goods like tobacco and fuel) and other taxes that can be imposed on services, etc.

**Subsidies on product:**

Subsidies are current unrequited payments that government units make to local producers or importers. They consist of subsidies on products made to each unit of produced goods or services and other subsidies on product made by the government to resident producers as a result of carrying out the production process.

**Gross operating surplus:**

The operating surplus totals the value of the gross value added at basic prices less the total of compensation of employees (including compensations payable to non-residents) less taxes (minus subsidies on product). Gross operating surplus can be analyzed to net operating surplus and the fixed capital consumption.<sup>4</sup>

However, this distinction was not possible in the Palestinian National Accounts since data were unavailable.

**Property income:**

Property income is the income receivable by the owner of a financial asset or a tangible non-produced asset (such as land) in return for providing funds to, or putting the tangible non-produced asset at the disposal of another institutional unit.

**Gross National Income:<sup>5</sup>**

GNI (gross national income) measures the gross value of the initial earned income of residents. It is the income incurred by carrying out production activities or by owning financial assets or land or subsoil assets. GNI can be measured by adding the following components:

- Compensations of employees payable to residents
- Operating surplus of production units (residents by definition)
- Taxes on production and imports less governmental subsidies
- Income generated by financial assets, lands, subsoil assets earned by residents

Less:

Income generated by financial assets, lands, subsoil assets paid by residents

GNI can be estimated in a different way by adding the initial income earned by residents less initial income earned by non-residents from the GNI.

**Gross disposable income:**

Gross disposable income measures available income of residents, which can be spent on consumption of goods and services (locally produced or imported goods and services) or for savings. Gross disposable income can be measured by adding the following components: GNI, current payable current taxes on income and wealth and others payable to residents, residents social security contributions and revenues, net insurance premiums and claims other than life insurance payable to residents, local different transactions, current transactions of non-residents (which can take any of the aforementioned forms)

---

<sup>4</sup> A line must be drawn between the consumption of fixed capital and the book consumption of the fixed capital used in commercial accounting basically for tax purposes. Consumption of fixed capital measures the reduction of fixed assets as a result of use and depreciation. It is a variable related to future view.

<sup>5</sup> Formerly known as Gross National Product GNP in SNA 1968 but the term became absolute in SNA 1993.

Less:

The same articles above on payments side.

Gross disposable income can also be measured in a simplified way by adding the net transactions from non residents to the GNI.

## Chapter Three

### Main Findings

#### The General Performance of the National Economy:

##### 3.1 Annual National Accounts:

The final findings of the National Accounts at current and constant prices throughout 2004-2007 that covers Palestinian macroeconomic indicators in this period show that fluctuation in the value of the Gross Domestic Product, growth and decline and in other indicators was caused by political and economic situations in the Palestinian Territory throughout this period. In looking at the actual Gross Domestic Product in Remaining West Bank and Gaza Strip and at the different growth rates for the Gross Domestic Product at constant prices, we find that in the year 2006 GDP declined by 5.2% compared with 2005. During the period 2004-2007, the GDP recorded the highest growth rate during the year 2005, 8.6%, increases compared with the year 2004. GDP increased during 2007 by 4.9% compared with 2006.

##### First: Percentage Contribution to GDP for the Years 2004-2007:

For percentage contribution to GDP by economic activity, we notice that the Palestinian economy is service-oriented at the top level. The percentage contribution to GDP was between 21.6%-22.8% which includes real estate, renting and business services, community, social and personal services, hotels and restaurants, education, health and social work during the years 2004-2007.

#### Percentage Contribution to GDP in Remaining West Bank and Gaza Strip by Economic Activity for the Years 2004-2007 at Current Prices

Economic Activity	2004	2005	2006	2007
Agriculture and fishing	7.1	5.5	5.8	6.3
Mining, manufacturing, electr. and water	17.1	16.8	15.5	12.6
Construction	5.7	6.4	7.6	6.5
Wholesale and retail trade	9.8	9.9	10.6	11.4
Transport, Storage and Communications	6.1	5.6	6.0	6.1
Financial intermediation	3.6	4.3	4.0	4.4
services	22.8	22.6	21.6	22.1
Public administration and defense	14.3	13.5	13.4	14.3
Households with employed persons	0.1	0.0	0.1	0.1
Other *	13.4	15.4	15.4	16.2
<b>Total</b>	<b>100</b>	<b>100</b>	<b>100</b>	<b>100</b>

##### Notes:

(\*): Includes public owned enterprises, FISIM, customs duties and VAT on imports, net

The findings show significant fluctuation in Percentage Contribution to GDP, for instance, the highest percentage contribution for Transport, Storage and Communications activity was 6.1% in 2004 & 2007, caused by activation of the informal sector in addition to the lengthy by-pass road caused by closing all main roads between various places. The lowest percentage contribution for this activity was 5.6% in 2005.

## Second: Per Capita Indicators:

### 1. At Current Prices

GDP,GNI,GDI Per Capita in Remaining West Bank and Gaza Strip for the years 2004-2007 at current prices (US\$) was:

Value In US\$

Indicator	2004	2005	2006	2007
GDP Per Capita	1,317.0	1,410.0	1,363.0	1,337.0
GNI Per Capita	1,389.8	1,518.9	1,489.2	1,493.7
GNDI Per Capita	1,615.9	1,862.0	1,865.8	2,093.0

### 2. At Constant Prices

GDP,GNI,GDI Per Capita in Remaining West Bank and Gaza Strip for the years 2004-2007 at constant prices (US\$) was:

Value In US\$

Indicator	2004	2005	2006	2007
GDP Per Capita	1,317.0	1,387.2	1,275.4	1,298.0
GNI Per Capita	1,389.8	1,489.9	1,392.7	1,444.6
GNDI Per Capita	1,615.9	1,822.1	1,741.7	2,042.9

## Third: GDP by Expenditure Side

The main findings indicate that final consumption on the GDP had achieved the highest expenditure value on the GDP at constant prices in Remaining West Bank and Gaza Strip for the year 2004, about US\$ 5,601.5 million. The final consumption of the households sector contributed the highest percent during the year 2005 by 81.3%.

The Gross Capital Formation was US\$ 1,347.2 million in 2006, its highest value, whereas Capital Formation for buildings contributed the highest percentage, 37.2%, in the same year. The lowest value for Gross Capital Formation was US\$1,022.3 million in 2004, but the trade balance recorded a sequence deficit during this period. The highest deficit amounted to US\$ 2,425.4 million during 2004. The following figure shows expenditure on the GDP in Remaining West Bank and Gaza Strip for the years 2004-2007 at constant prices:

### 3.2 Institutional National Accounts:

The findings of the revised time series in current and constant prices of the Palestinian throughout 2004-2007 show that the Households sector provided the highest contribution to the GDP followed by the Non-Financial enterprises sector. The financial Enterprises sector provided the lowest contribution, as the table below tells us.

**Gross Domestic Product in Remaining West Bank and Gaza Strip by Institutional Sector for the Years 2004-2007 at Current and Constant Prices: 2004 is the Base Year**

(Value In US\$ Million)

<b>Indicator</b>	<b>2004</b>	<b>2005</b>	<b>2006</b>	<b>2007</b>
<b>Current Prices</b>				
Households sector	1,672.6	1,884.0	1,944.2	1,791.6
NPISH sector	235.3	249.7	307.2	282.0
Government sector	938.1	1,012.3	925.1	1,078.0
Financial enterprises sector	163.8	219.8	202.1	230.2
Non- Financial enterprises sector	1,188.6	1,268.6	1,240.5	1,290.5
<b>Constant Prices</b>				
Households sector	1,672.6	1,875.0	1,578.6	1,595.3
NPISH sector	235.3	252.3	243.8	301.3
Government sector	938.1	1,039.3	1,038.0	1,049.6
Financial enterprises sector	163.8	221.1	205.0	256.7
Non- Financial enterprises sector	1,188.6	1,171.8	1,256.9	1,332.8



## Chapter Four

### Methodology

This Chapter will present the adopted methodologies for the compilation of the National Accounts at current and constant prices based on the available price deflators. In addition to that we will present the methodologies for compiling both the Institutional National Accounts at current and constant prices.

#### 4.1 Annual Basic National Accounts

##### 4.1.1 Basic National Accounts at Current Prices

##### 4.1.1.1 Data sources for the GDP from the Production side:

Activity	Source	Notes
Agriculture and Fishing	<ul style="list-style-type: none"><li>- Agriculture Statistics</li><li>- Palestinian Expenditure and Consumption Survey</li><li>- Oil Presses Survey</li></ul>	<ul style="list-style-type: none"><li>- The compensation of employees obtained from the Labour Force Survey.</li><li>- Estimates available about the intermediate consumption of the fishing production due to lack of data.</li><li>- Oil presses survey provides estimates about the farmers' production from pressing olives as a secondary activity.</li></ul>
Mining and Quarrying	Industry Survey	
Manufacturing	<ul style="list-style-type: none"><li>- Industry Survey</li><li>- Oil Presses Survey</li><li>- Palestinian Expenditure and Consumption Survey</li></ul>	
Electricity and Water Supply	<ul style="list-style-type: none"><li>- Industry Survey</li><li>- Local government budgets</li><li>- Palestinian Expenditure and Consumption Survey</li></ul>	
Construction	Contractors' Survey (Formal Sector) Existing building survey (Informal Sector)	LFS data for the compensation of employees were used in estimating them for the informal sector.
Wholesale and Retail Trade	Internal Trade Survey	
Hotels and Restaurants	Services Survey	
Transport	Transport Survey (Formal Sector) Informal Transport Survey (Informal Sector)	
Financial Intermediation	Finance Survey	



Activity	Source	Notes
Real Estate, renting and Business services	- Services Survey - Palestinian Expenditure and Consumption Survey - Estimates for the imputed rents from the economic surveys	
Public Administration and Defense	- Central Government Budget - Local Government Budget - Government abroad Budgets	
Education	- Services Survey - UNRWA Budget - Ministry of Education budget	
Health and social work	- Services Survey - UNRWA Budget - Ministry of Health budget	
Community, social and personal services	-Services Survey	
Households with employed persons	- Palestinian Expenditure and Consumption Survey	

**Data sources for the GDP from the Expenditure side:**

Transaction	Source	Notes
Household Final Consumption	-Palestinian Expenditure and Consumption Survey	
Government Final Consumption	Administrative records from: - Central Government - Local Government - Extra Budgetary institutions - Government Abroad - Palestinian Expenditure and Consumption Survey	
NPISH Final Consumption	- Services Survey - UNRWA Budget - Palestinian Expenditure and Consumption Survey	
Gross capital formation	For Buildings (Contractors Survey) For Non buildings (Imports of capital goods from the Foreign trade statistics)	
Changes in inventories	Economic surveys	
Exports	Foreign trade statistics (exports of goods) Rest of the world estimates (exports of services)	

Transaction	Source	Notes
Imports	Foreign trade statistics (imports of goods) Rest of the world estimates (imports of services)	

**Data sources for the GNI and GNDI :**

Transaction	Source	Notes
Income vis-à-vis non residents, net Compensation of employees (residents) receivable abroad Compensation of employees (non residents) payable abroad	Balance of Payments	
Property Income, net Property Income receivable Property Income payable	Balance of Payments	
Current Transfers from abroad, net Current Transfers receivable from abroad  Current Transfers payable for abroad	Balance of Payments	

**4.1.1.2 The main basis for revision process**

During the process of compiling this report, many economic indicators changed and a cumulative process of expertise was achieved. Based on the following it was necessary to have a revised time series for the National Accounts covering the period 2004-2007 based on the following considerations:

- The updating process of the data sources when possible depending on the latest administrative records available from mainly the Government and UNRWA.
- Unifying the methodologies from the various data sources based on the latest one, such as the methodologies for estimating the government production, imputed rent and the gross capital formation. Using the latest methodologies improve the data quality for data compilation.
- Unifying the data coverage for the data by economic activities. This was accomplished by revising the economic surveys data based on the results of the Population, Housing and Establishments Census 2007 since it was based on this; it showed that there was under coverage in the frames for compiling the economic surveys for the years 2005-2006 that depended on the 2004 Establishment Census.
- Improving the consistency of the data by checking the framework of the data, such as checking the proportion of inputs to outputs, the value added per employee, in addition to the logic of the growth rates for the output and value added, in addition to the regional distribution for the data.
- Balancing the GDP from both the production and expenditure sides at current prices.
- Re checking for the data at current prices after compiling those at constant prices based on the general overview about the performance of the economy.

#### 4.1.2 Basic National Accounts at Constant Prices

The methodology for compiling the National Accounts at constant prices based on a set of price indices and deflators. Mainly PCBS produces three types of indices (Consumer price index, producer and wholesaler price index) based on the average of the year 2004 as a base year for the CPI, while the year 1997 is the base year for the producer and wholesaler price index.

The process for deflating was two-fold: First step was by compiling the necessary deflators in format and details of the SUT, while in the second step those deflators were used in order to deflate the various transactions in the SUT.

**The following table shows the various indices used to deflate various transactions:**

Transaction	Price Index	Source
<b>Output</b>		
Output from Goods	Pal-PPI	PCBS
Output from Buildings	Special Index based on the components of the output	PCBS
Services	Pal- CPI	PCBS
VAT on Imports	Pal-WPI	PCBS
Imports of goods and services	Residual	
<b>Intermediate Consumption</b>		
From Goods	Pal-WPI	PCBS
From Services	Isr-WPI	Israeli Abstract
<b>Final Consumption</b>		
Household Final Consumption	Pal- CPI	PCBS
Government Final Consumption	Special Index based on the production of Government	PCBS
NPISH Final Consumption	Pal-WPI	PCBS
<b>Gross Capital Formation</b>		
Gross Fixed Capital Formation	Pal-WPI	PCBS
Changes in Inventories	Pal-WPI	PCBS
Exports of goods and services	Pal-PPI	PCBS

#### 4.2 Institutional National Accounts

The methodology for compiling the Institutional National Accounts is based mainly on the Annual Basic National Accounts. Therefore the results of this report for the institutional accounts depend on the annual national accounts for the years 2004-2007 as a basis for the institutional distribution for institutions and based on the recommendations of the SNA 93.

Two approaches were used to compile the institutional national accounts based on the sources of the data and their particularity.

##### **First Approach consists of:**

Agriculture and Fishing:	Classified as Household sector.
Financial Intermediation:	Financial Institutions Sector.
Public owned enterprise:	Non Financial Institutions.
Public Administration and Defence:	Government Sector.

Household Services:

Household Sector.

**Second Approach consists of:**

It consists of all activities where data are collected from the economic surveys, and those data were classified by their institutional sectors based on the legal entities.

A percentage contribution for each sector was used as a basis for distributing the data for each sector.



## Chapter Five

### Data Quality

SNA'1993 was adopted as a reference for the preparation of National Accounts since the establishment of the Central Bureau Of Statistics. Therefore the preparation of Palestinian national accounts did not face a transition process from SNA'1968 process. SNA'1993 is the latest basic and internationally agreed standards for the preparation of the accounts that are interrelated and consistent for macroeconomic analysis. It provides a set of concepts, definitions and classifications in the context of integrated accounting purposes, designed to provide data necessary for decision-taking, policy-making and economic analysis.

#### 5.1 Data Quality

Several procedures were adopted to ensure data quality and coverage in the National Accounts Data which can be summarized in the followings:

- Compiling economic surveys covering all activities except agriculture.
- Compiling economic surveys covering the informal sector in construction and transport activities.
- Depending on the Population, Housing and Establishment Census 2007 in preparing the per capita data.
- Compiling the necessary price deflators for compiling the constant prices data.
- Revising the Economic surveys results for the years 2005-2006 based on the results of the Population, Housing and Establishment census 2007 which provide better coverage for the national accounts indicators which its main source is the economic surveys series.
- Better data coverage for the government data especially for those pertaining the Custom Duties and the VAT based on the accrual basis.
- Developing the consistency of the data after updating them from different sources and comparing the structure of the data (percent of inputs to outputs, percent of compensation of employees to value added, the logic for the growth rates in production and value added).
- Updating the base year 1997 by depending on updated year 2004 as a base year for the years 2004-2007 at constant prices.
- Using the adjustments of the Supply and Use Tables for the years 1997-1998 to compare the consistency of the data.

#### 5.2 Data Reliability

The compilation of National Accounts relay on a system of data sources (surveys and administrative records) that have a high degree of reliability, in addition to that the process of compilation depend heavily on computerized system which minimizes the human errors by applying several checks.

In addition to that, data reliability for the economic surveys data were done to ensure consistency of the data, since the reliability in this source depend on the transparencies for the owners of the establishments. Consistency of those data was checked mainly after adaptation of the revised time series for the economic surveys 2005-2006.