

**2008**

**2008 /**

**2006**

.2008 - 1429 ©

:

.2008

.2007

:

- 1647 . .

(970/972) 2 242 6340 :

(970/972) 2 242 6343 :

diwan@pcbs.gov.ps :

<http://www.pcbs.gov.ps> :

2008

(PNA)

2008 (CFG)

.(SDC)

(CFG)



•

•

•

•

•



(7/11)

2008

2007-

**2008**





<b>25</b>	:
<b>27</b>	:
<b>35</b>	:
<b>39</b>	:
<b>43</b>	:
<b>47</b>	:
<b>51</b>	:
<b>57</b>	:
<b>63</b>	:
<b>67</b>	:



<b>31</b>	(49-25)			:
		2004		:(1-2)
<b>40</b>			15	:
		2008		:(1-4)
<b>44</b>				:
				:(1-5)
<b>45</b>	2007			:(2-5)
<b>45</b>				:(3-5)
			2007	
<b>46</b>		2007-1998		:(4-5)
<b>47</b>		( 15)		:
			2007	:(1-6)
<b>48</b>		( 15)		:(2-6)
			2007	
<b>49</b>		2008/2007		:(3-6)
<b>50</b>		2007/2006		:(4-6)
<b>53</b>				:
			2006	:(1-7)
<b>55</b>	2006	( 10)		:(2-7)
<b>59</b>				:
			2006	:(1-8)

<b>63</b>	2007	:
		<b>:(1-9)</b>
<b>63</b>	2007	<b>:(2-9)</b>
<b>65</b>	2007	<b>:(3-9)</b>

			:
28	2007	( <sup>2</sup> / )	:(1-2)
29	2006		:(2-2)
30	(2006 ,1997)		:(3-2)
32			:(4-2)
		(2006-1997)	
33	2006		:(5-2)
			:
35	2006		:(1-3)
36			:(2-3)
		(2007-1997)	
38			:(3-3)
		(2007-1997)	
			:
40	)		:(1-4)
		(2008	
			:
48	( 15)		:(1-6)
		2007	
			:
58	2004		:(1-8)
60	2006	( 10)	:(2-8)
60			:(3-8)
		2006	
			:
64	2006		:(1-9)



:  
 :  
 ( )  
 :  
 :  
 ( )  
 ( ) ( )  
 :  
 :  
 :  
 :  
 ( ) ( ) :  
 :  
 ( ) :  
 :  
 1000 :  
 1000 :  
 :  
 1000 :  
 1000 :  
 :  
 ( ) ( ) :  
 :  
 15 :

:

:

:

( )

:

( )

:

:

:

:( )

:

( )

:

:

.( 35)

:



.  
( )

.1 :  
.2  
.3

- (1) :
- (2)
- (3)
- (4)

:

:( )

:

)

.(

:

:

:

:

:

:

:

:

10

( )

:

:

:

:

:

:

( )

( )

:

( )

( )

:

:

:

...

( )

:

:

:

:

...

:

:

:

:

:

:

:

:

,( )

:

:

:

( ) :

( ) : .1

( ) : .2

( ) : .3

: .4

( ) : .5

: .6

: .7

: .8

: .9

(9 5)

: .10

:( )

) :

.(

( )

:

:

:

.

:

:

.

:

:

.( ... ) .

:

:

:

:

( - - )

:

:	:	:	.1	:
		:	.2	
		:	.3	
:	:	:	.1	
		:	.2	
		:	.3	
	:	:		
		:	.1	
		:	.2	
		:	.3	

:

:

10 )

( ...

... ( )

:

2.345	3.761	2007/12/1							•
				1.416					•
	%45.7	2006		(14-0)					•
	%3.0	2006		65					•
	4.2	4.6		2006					•
							5.4		•
	73.2	71.7		2006					•
							%78.1		•
				.2006					•
		2006							•
							%.9.1		•
.2008	(%22.5)								•
	%28.0								•
							%.38.8		•
							%62.5		•
							.2008		•
608		2007	6						•
	%57.2								•
							%30.3		•
				. 2007					•
		2007				15	%6.2		•
.2007	(%2.8)						%9.7		•
		2006					%34.6		•
							%30.0		•
2006									•
%.30.5			%29.7						•
.2006						100	10		•
%95.7)			2007						•
									•
			.(		%92.8		%99.4		•





مقدمة

2007



:

<b>2007/12/1</b>	<b>3.76</b>
------------------	-------------

	2007/12/1	2007-			
103.0		1.853	1.908	3.761	
	1.190	2.345			
1.416			103.0		1.155
		103.0	698	718	

2007/12/1				551
				42
				496
				173

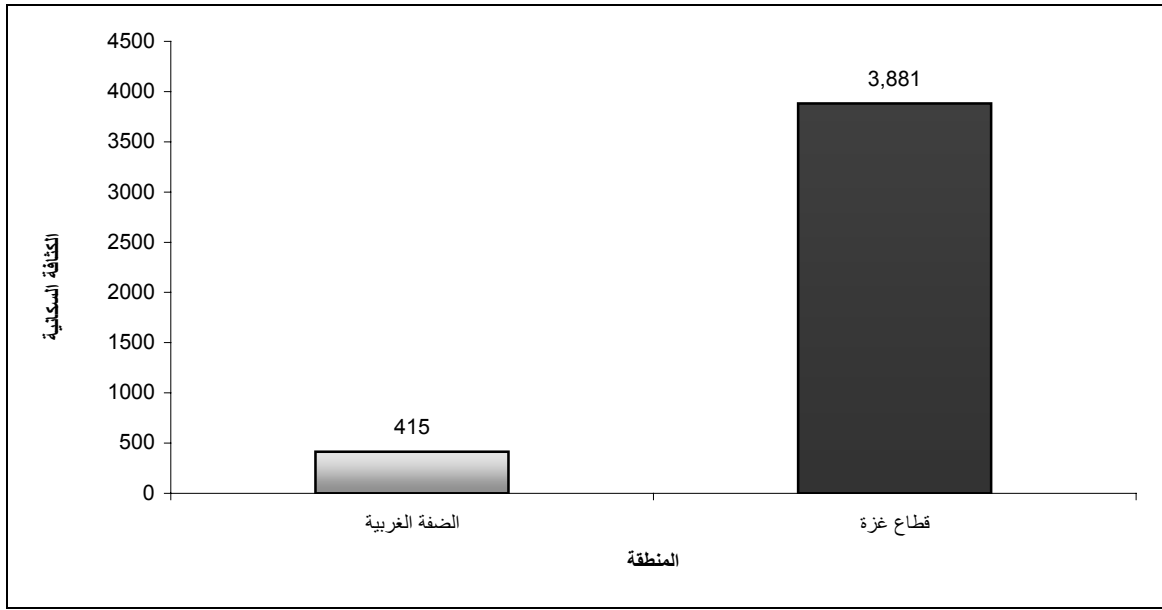
<b>2007</b>
-------------

1.4				
			<sup>2</sup> 365	
				1948
<sup>2</sup> / 415		<sup>2</sup> / 625	2007	
				<sup>2</sup> / 3,881

2007

( / )<sup>2</sup>

:(1-2)



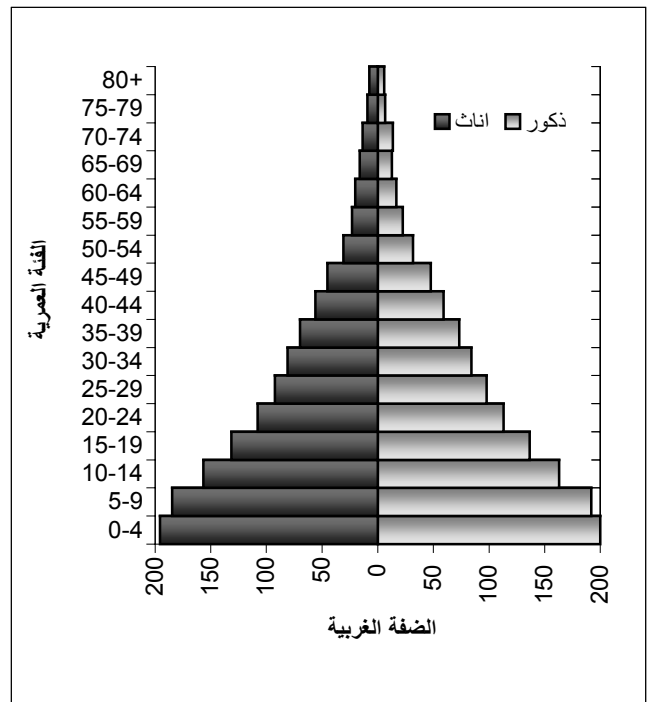
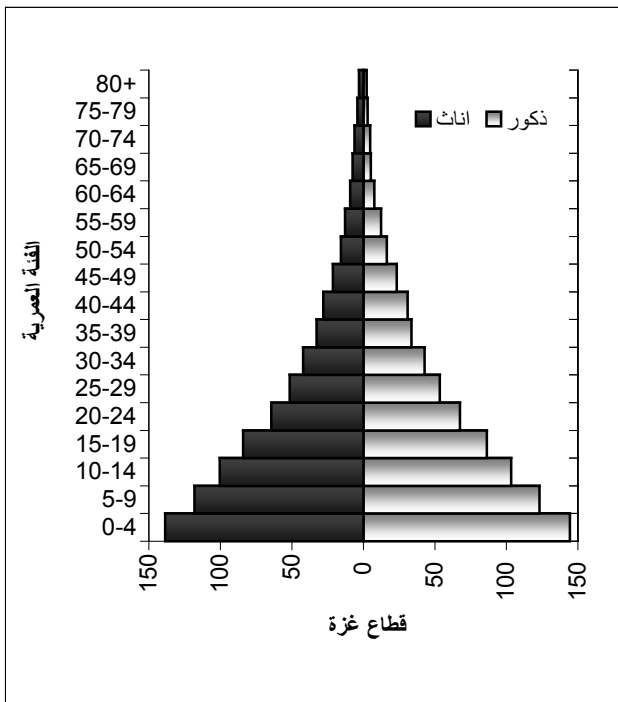
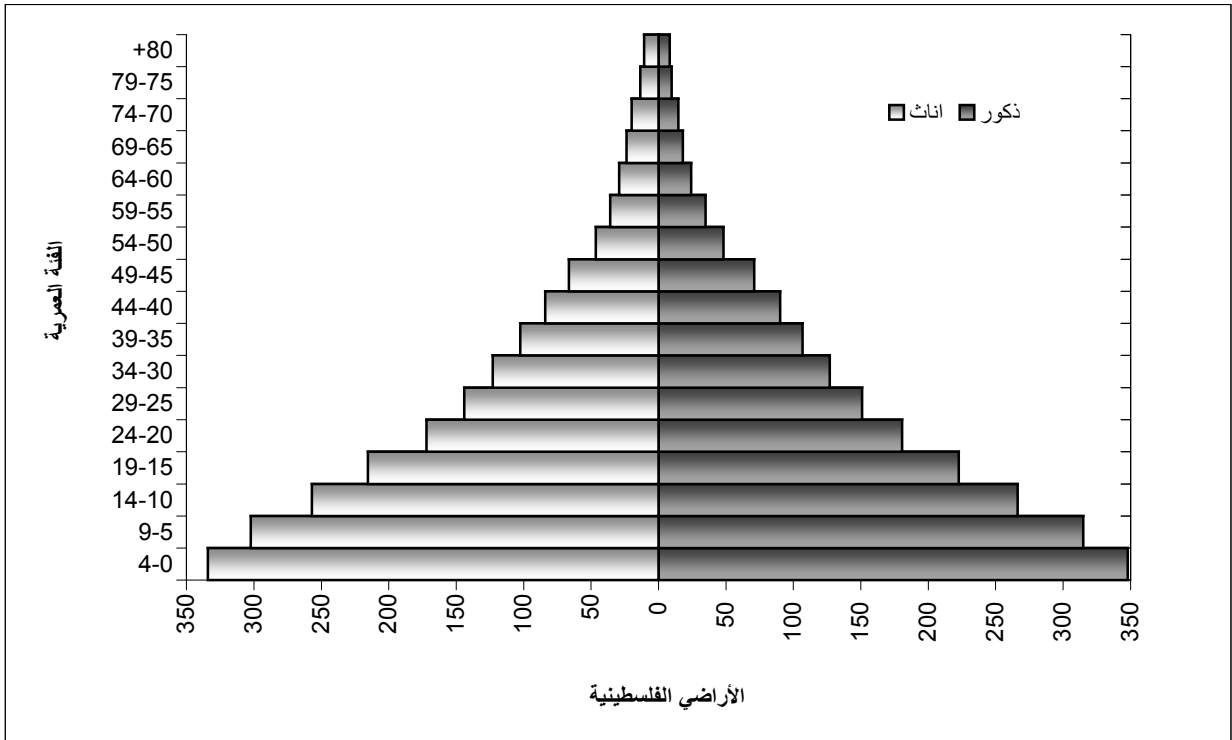
) 2007 .2008 :  
 . - .(



%17.3 2006  
 %43.9 ( 65)  
 %2.6 %3.3  
 15.5 17.8 16.9 2006  
 %19.0 %16.2  
 %45.7 (14-0)  
 %48.8  
 %3.0 2006

2006

:(2-2)



(2005)

2008

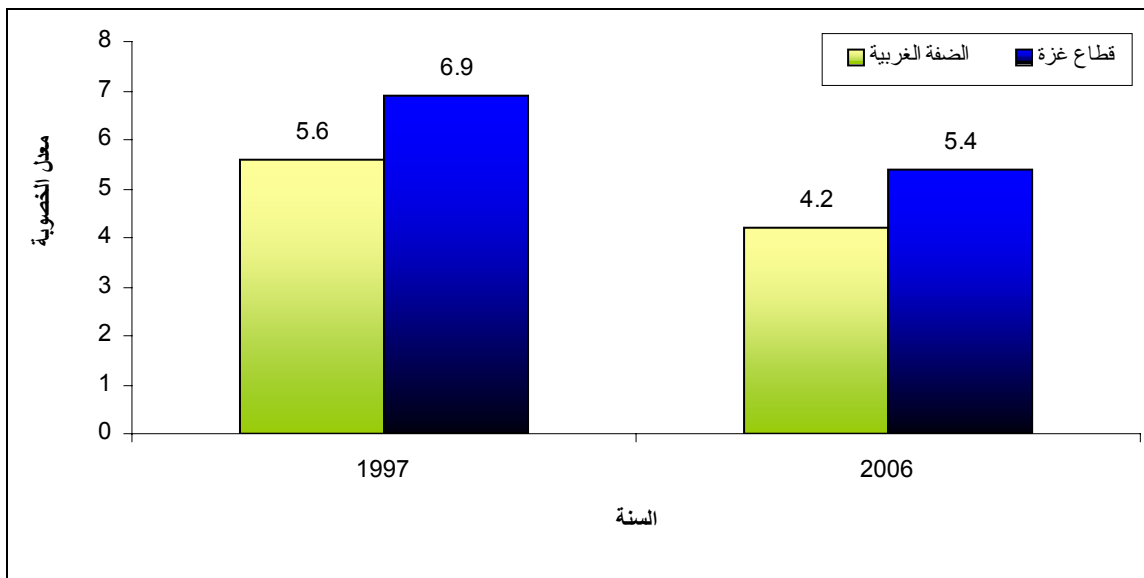
:

**2006**

السنة	قطاع غزة	الضفة الغربية
1997	6.9	5.6
2006	5.4	4.2
2006	4.7	4.6
2006	3.7	3.1
2006	2.0	2.0

(\*\* 2006 , \* 1997)

:(3-2)



- 1997 : \*

- 2006 : \*\*

<b>2006-1997</b>	<b>%6.0</b>
------------------	-------------

42.7

2006 36.7 1997

2006

2006

41.7

33.7

2004-

20

(49-25)

13

23

(49-25)

6-1

19

(49-25)

:(1-2)

**2004**

	49-45	44-40	39-35	34-30	29-25	
<b>20</b>	20	20	20	20	19	
<b>20</b>	19	20	21	20	20	
<b>20</b>	21	21	20	19	19	
<b>20</b>	20	20	20	20	20	
<b>20</b>	19	20	21	20	20	
<b>20</b>	21	21	21	20	19	
<b>20</b>	20	20	18	19	17	0
<b>19</b>	18	19	20	19	18	6-1
<b>18</b>	19	19	19	18	17	9-7
<b>20</b>	21	21	20	20	19	12-10
<b>23</b>	26	25	24	23	22	+13

- 2004

.2008

:

:

**2006-1997**

1997                      1000                      4.9                      2006                      1000                      3.9

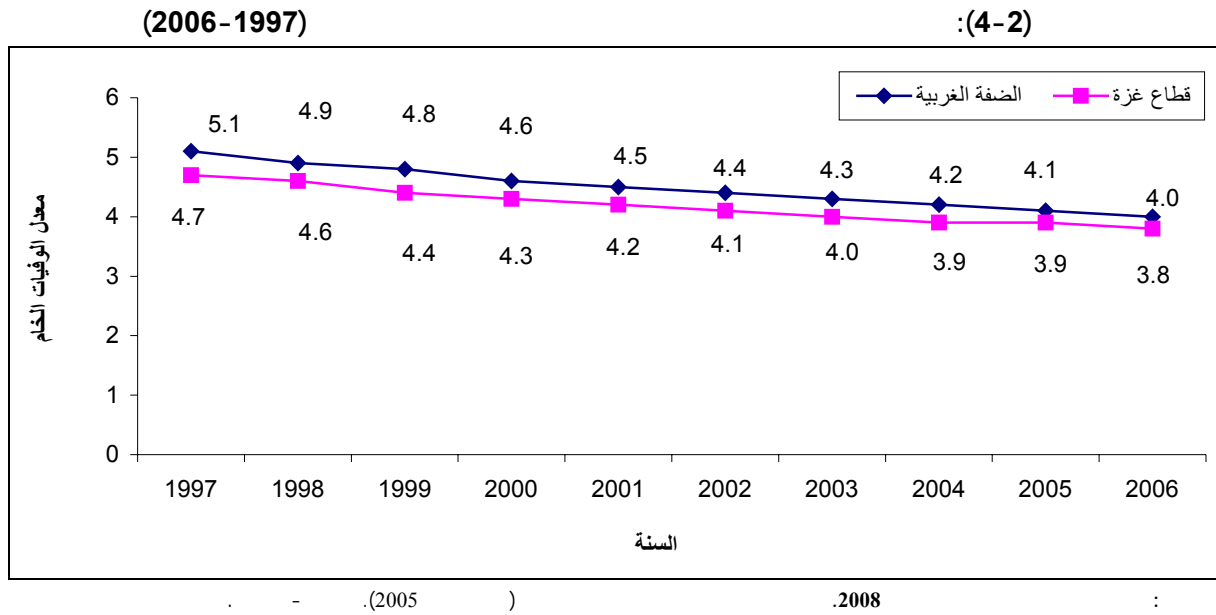
5.1

.2006                      4.0                      1997

.2006                      3.8                      1997                      4.7

23.7                      27.3 )                      25.3

44.0                      22.0                      2003                      2006-2004                      (



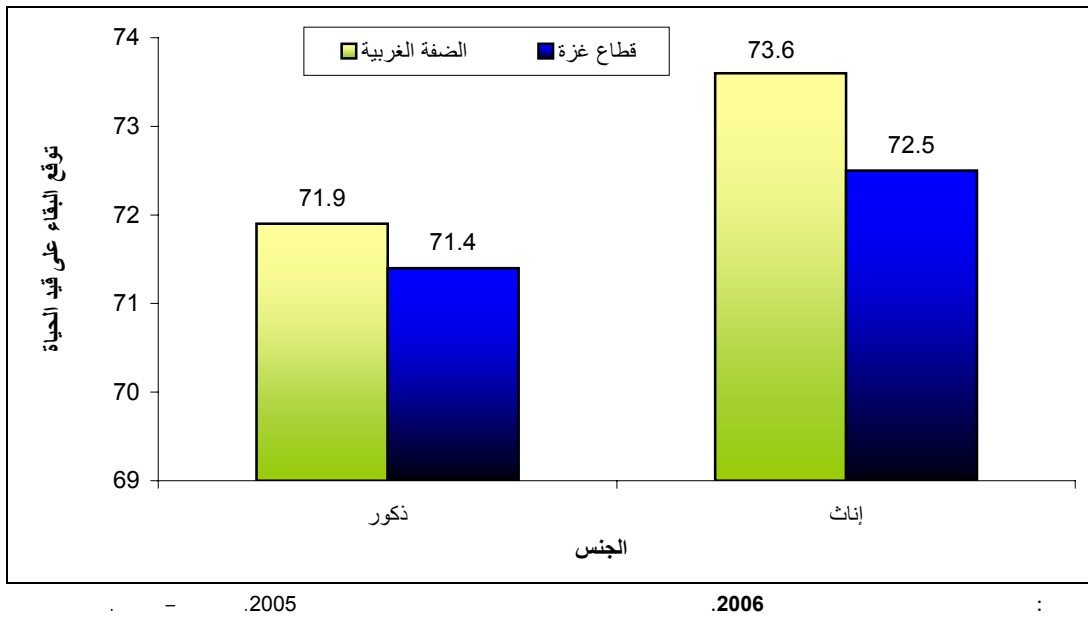


**2006**

2006      71.7      73.2      2006      71.4

73.6      71.9      72.5

2006      : (5-2)



**1997-1994**

1967      1948

1967

1991

	2004		1995		1997
		%29.1	1997-		
%17.2		(1997-1994)		%58.6	(1993-1990)
					%41.4
%18.0	15				
	( 65)			%54.8	(40-15)
				%5.7	
					(40-15)
				:	

<b>1997</b>	<b>%34.7</b>	<b>%65.3</b>
-------------	--------------	--------------

			1997	
%34.7		%65.3		%10.5
%48.5				
(1993-1990)		%24.1		
%53.6				
				%46.4
	2006			
(24-20)	%5.3		%5.5	
			(29-25)	%5.6
			%19.3	%23.7
			%40.4	%39.7
		%38.4		%16.7



219,222

427,533

646,755

.2007

6.5

.1997	6.4	2007	5.8
1997	6.1	2007	5.5
. 1997	6.9	2007	



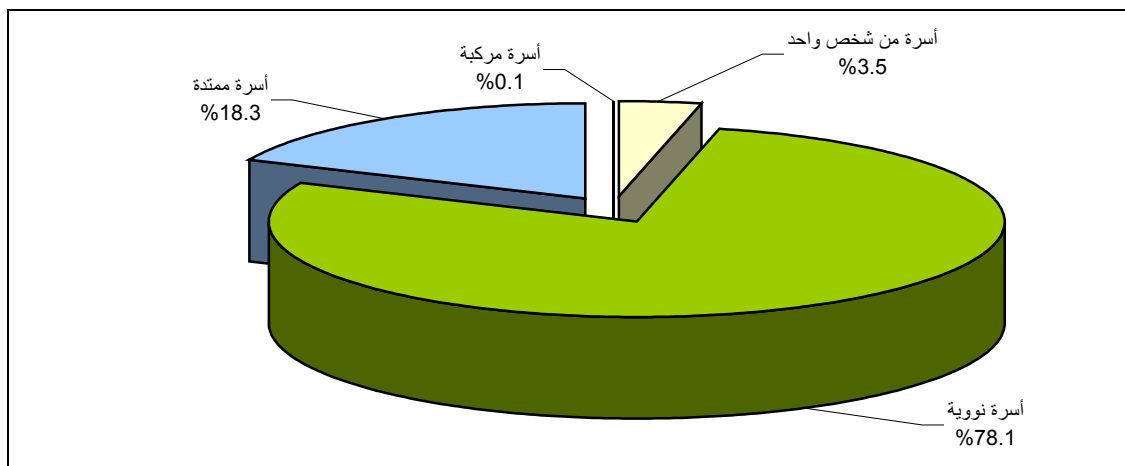
2006

2006

.1997	%73.3		%78.1
		%73.0	%80.7
		.2006	%18.3
		%0.1	%3.5

2006

:(1-3)



.2006

.2008

**2006**

2006      %9.1      2006

%8.5    %7.0

3.5      2006

6.5

**2006      2007      %15.8**

2006      2007

(2006      4,452      ) 2006      28,233      2007      32,685

    %56.8      )      18,576      2007

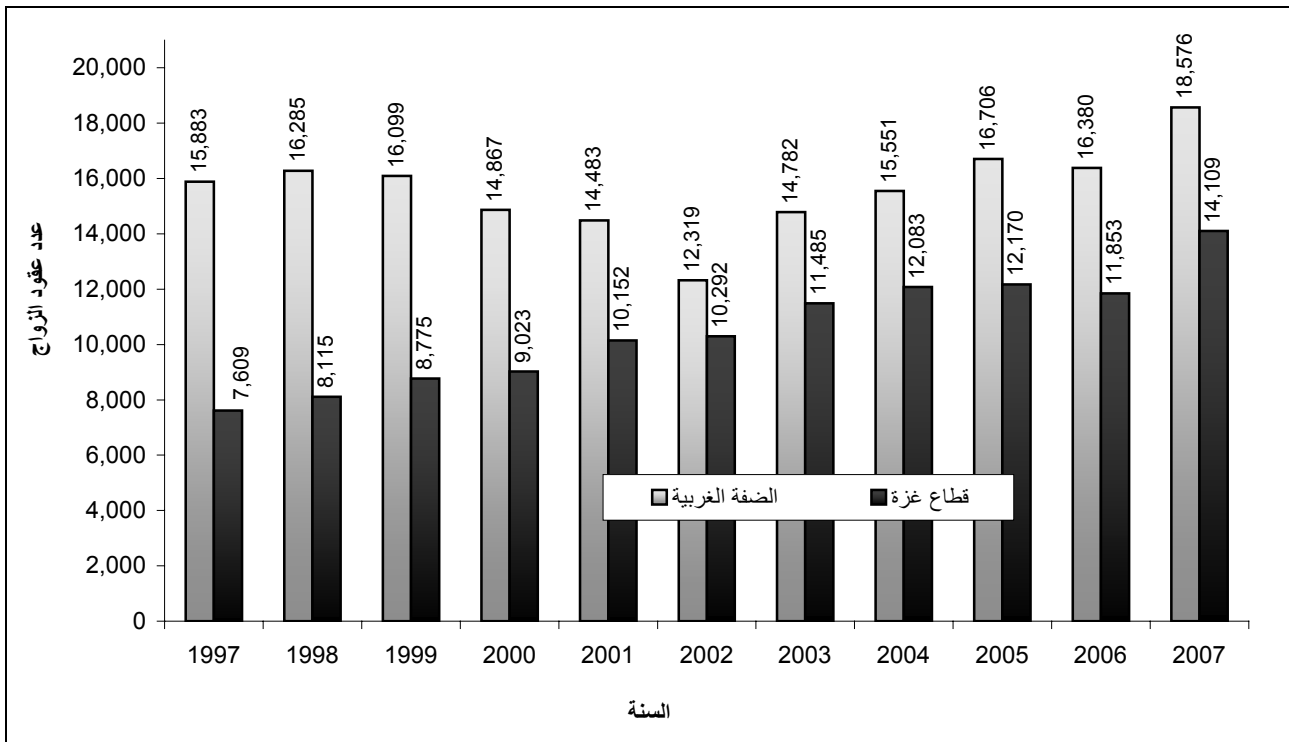
    .2006      2,196      (

    %43.2      ) 2007      14,109

    .2006      2,256      (

**(2007-1997)**

**:(2-3)**

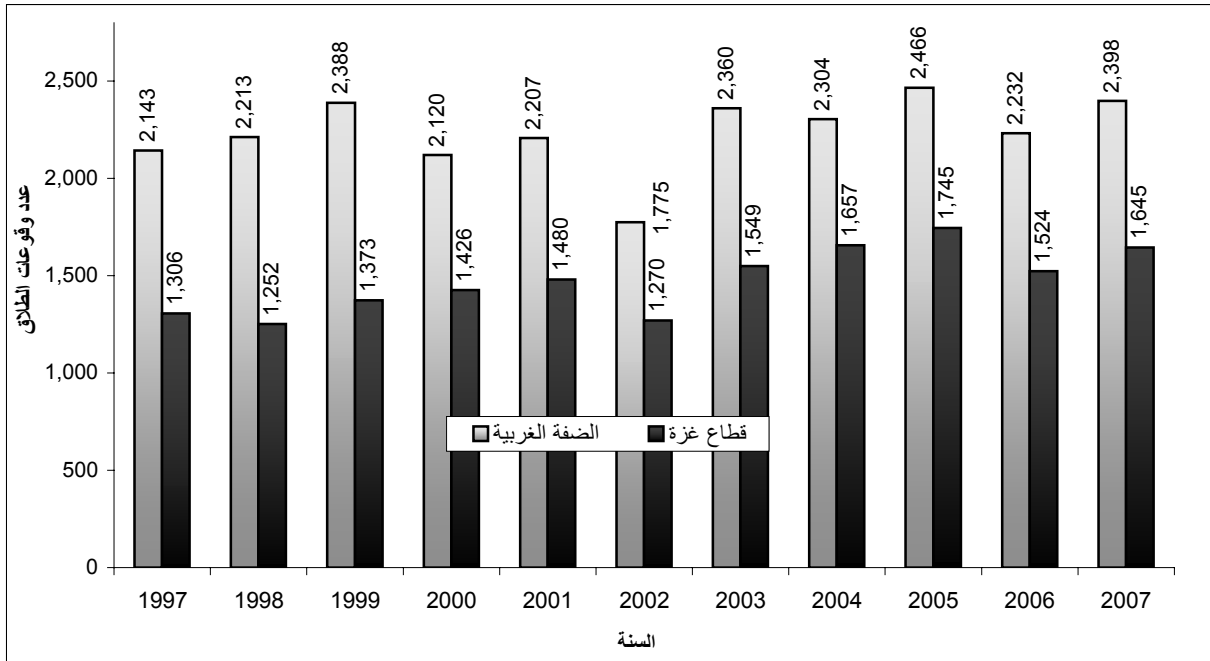


- .2007      .2008      :



(2007-1997)

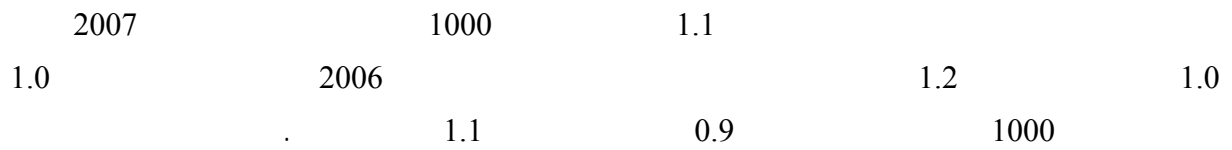
:(3-3)



- .2007

.2008

:



:

2008	%66.0	%14.7
------	-------	-------

) %40.6  
10 ) 2008 - ( 15  
%43.5 ( 4 15  
.2007 ( ) %41.2 (2000 - )  
%37.5 %42.3 2008  
%66.0 %11.3 %16.5 %14.7  
%63.3 %67.5  
.( ) %6.1 %77.4

2008

100	22.6	6.1	71.3	100	59.4	40.6	
100	22.7	7.0	70.3	100	34.0	66.0	
100	21.7	2.1	76.2	100	85.3	14.7	
100	19.0	6.9	74.1	100	57.7	42.3	
100	19.9	8.3	71.8	100	32.5	67.5	
100	15.0	1.3	83.7	100	83.5	16.5	
100	29.8	4.4	65.8	100	62.5	37.5	
100	28.2	4.5	67.3	100	36.7	63.3	
100	39.3	4.3	56.4	100	88.7	11.3	

- .2008 .2008 :

:

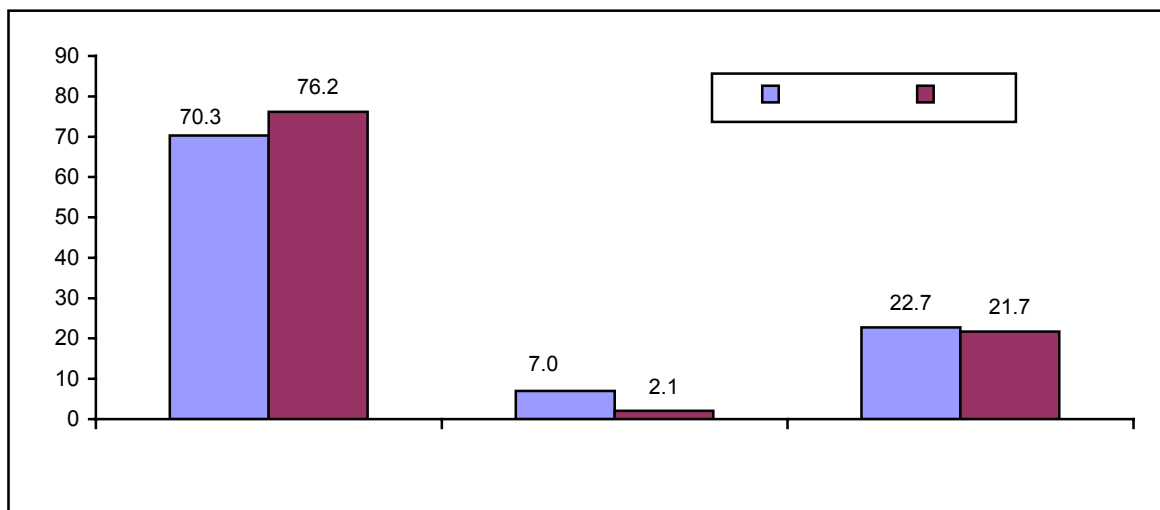
**2008 (%22.5)**

2008

. %29.8 %19.0 %22.6  
 . %22.7 %21.7  
 .2006 %8.4 %14.0

2008

:(1-4)



- .2008 .2008 :



**2008**

%28.0

2008

.%25.7

.%4.9

.%33.1

%38.8

.%24.9

:

**2008-2000**

**%8.9**

2008

%15.9

%24.8 (2000 - )

.%15.4 (2000 - )

%58.2

%95.8

. %58.5

%58.5

%64.2

%62.5

%71.0

%66.2

%67.6

%24.3 2000

%18.1

%3.8

.2008

.2006

%9.9 %4.4

2008

%9.4

)

%52.0

2008

%38.5 (

%13.1

%36.6

.%37.9

%21.4

%15.0

. %22.2

.%12.5

%22.9

%17.4

.(

%16.3

%38.7 )

84.8 2008  
139.9 63.6  
40.2 41.2  
43.0

1,714 ( ) (2008/1/14 2007/1/15)  
 .( 419 812 ) 1,231

:

<b>2007</b>
-------------

2007  
 415 708 ) 608  
 . 6.9 6.1 ( )  
 .( %41.4 %35.4 ) %36.8

651 601 454  
 6.5 6.4 6.3  
 %39.0 %35.0

:

<b>2007</b>	<b>60</b>	<b>116</b>
-------------	-----------	------------

2006 2007  
 116 2007 2006 107  
 .%8.4

2006 2007  
 69 2006 2007 60  
 .%13.6

2001 (1998-1996)

(2007-2004)

:(1-5)

2007	2006	2005	2004	2001	1998	1997	1996	
1,231	1,281	2,152	3,098	3,022	2,836	3,275	4,500	
6.4	6.4	6.5	6.6	6.9	7.0	7.1	6.9	
224	208	199	193	183	220	223	229	
44	38	42	35	34	46	50	50	
40	55	52	53	51	40	41	39	
38	36	37	32	32	30	33	39	
29	28	21	29	19	21	23	21	
97	81	78	69	60	55	62	64	
21	23	19	18	26	19	20	20	
15	12	15	13	17	17	16	18	
16	15	15	13	12	11	12	13	
84	94	106	80	77	88	99	99	*
<b>608</b>	<b>590</b>	<b>584</b>	<b>535</b>	<b>511</b>	<b>547</b>	<b>579</b>	<b>592</b>	

- (2008/1/14-2007/1/15) .2008 :

**2007**

.1997

" ) .2008/1/14 2007 ( 2007/1/15

572 ) 2,362 (

457 ) 1,886 ( ) (

.(

%19.1 ) %30.3  
 2007  
 %57.2 .( %51.8  
 .( %79.4 %45.7 )  
 ( ) %18.3  
 .( %35.0 %9.7 )  
 %69.9 %34.1 ) %46.3  
 .(

2007

:(2-5)

34.1	9.7	45.7	19.1	
69.9	35.0	79.4	51.8	
<b>46.3</b>	<b>18.3</b>	<b>57.2</b>	<b>30.3</b>	

- (2008/1/14-2007/1/15)

.2008

:

2007

:(3-5)

11.8	2.1	17.6	4.6	
32.7	9.7	41.2	16.5	
<b>18.9</b>	<b>4.8</b>	<b>25.6</b>	<b>8.6</b>	

- (2008/1/14-2007/1/15)

.2008

:

2006

2007

%1.6

.%8.1

%13.2

%13.2

%3.6

.%17.9

2007-1998

:(4-5)

2007	2006	2005	2004	2001	1998	
30.3	30.8	29.5	25.6	27.9	20.3	( %)
8.6	8.3	8.0	6.6	7.6	5.5	( %)
4.8	4.2	4.4	3.9	5.0	3.0	( %)
18.3	18.5	18.1	16.4	19.5	12.5	( %)
19.1	22.0	22.3	19.8	18.9	14.5	( %)
4.6	5.3	5.8	4.8	4.6	3.7	( %)
2.1	2.5	3.0	2.6	2.9	2.0	( %)
9.7	11.0	13.1	11.6	12.0	8.4	( %)
51.8	47.9	43.7	37.2	46.7	32.8	( %)
16.5	14.0	12.5	10.4	13.9	8.9	( %)
9.7	7.5	7.1	6.3	9.5	5.4	( %)
35.0	33.2	27.9	26.0	35.4	21.6	( %)

- .(2008/1/14-2007/1/15)

.2008

:

:

<b>2007</b>	<b>( 15)</b>	<b>%13.0</b>
-------------	--------------	--------------

( 15) 2007  
 .%13.2 .%8.7

. %7.4 %10.0  
 . %16.5 %9.9

**2007 ( 15) :(1-6)**

9.5	3.1	6.2	9.8	2.6	6.2	<b>9.7</b>	<b>2.8</b>	<b>6.2</b>	
4.7	7.1	5.9	7.9	7.2	7.5	<b>6.8</b>	<b>7.1</b>	<b>7.0</b>	
13.9	17.0	15.5	16.2	19.0	17.6	<b>15.4</b>	<b>18.3</b>	<b>16.9</b>	
34.4	32.8	33.6	35.5	37.6	36.6	<b>35.1</b>	<b>35.9</b>	<b>35.5</b>	
26.3	24.5	25.4	18.6	19.1	18.9	<b>21.3</b>	<b>21.0</b>	<b>21.2</b>	
4.2	4.3	4.3	4.5	5.2	4.8	<b>4.4</b>	<b>4.9</b>	<b>4.6</b>	
7.1	11.3	9.2	7.5	9.3	8.4	<b>7.4</b>	<b>10.0</b>	<b>8.7</b>	
<b>100</b>	<b>100</b>	<b>100</b>	<b>100</b>	<b>100</b>	<b>100</b>	<b>100</b>	<b>100</b>	<b>100</b>	

- .2007 .2008 :





:

2,430	2008/2007	
33,357	1,097,957	
		43,559

**2008/2007 : (3-6)**

			المؤشر
<b>621</b>	<b>1,809</b>	<b>2,430</b>	
373	1,460	1,833	
214	95	309	
34	254	288	
<b>443,740</b>	<b>654,217</b>	<b>1,097,957</b>	
222,956	325,803	548,759	
220,784	328,414	549,198	
<b>11,599</b>	<b>21,758</b>	<b>33,357</b>	
5,055	8,620	13,675	
4,555	9,022	13,577	
1,989	4,116	6,105	
<b>16,111</b>	<b>27,448</b>	<b>43,559</b>	
7,780	11,650	19,430	
8,331	15,798	24,129	

-2008/2007 .2008

13

11

2007/2006

158,132

11,241

19

**2007/2006**

**:(4-6)**

	*	
6,319	72,034	
4,922	86,098	
<b>11,241</b>	<b>158,132</b>	
		<b>2006/2005</b>
1,482	7,321	
1,342	10,046	
<b>2,824</b>	<b>17,367</b>	
		**
505	2,614	
158	533	
<b>663</b>	<b>3,147</b>	

-2007/2006

.2008

∴  
\*  
\*\*

2006

:

2006	%32.8
------	-------

%33.9 ) %32.8  
 %80.4 ( ) .2006 ( %30.8  
 .( %75.9 %82.7 )  
 %62.7  
 %8.4 %17.5  
 %4.0 %7.1  
 %0.3  
 %77.7  
 %75.5  
 %38.6 %81.9  
 %34.3 %40.9  
 %50.9 ( 10)  
 %49.5 %51.8  
 %46.4 %55.3  
 %52.0  
 %7.1 %8.2 %21.0  
 %4.6  
 ( 10) %39.7  
 %39.4 %38.7 %41.5 %38.7  
 %10.0 %37.5

%43.7 .( 10)  
 %22.7 (15:00 -8:00) %33.6 (20:00 - 15:00)  
 %9.4 %10.3  
 %8.7 %8.9 %8.8



%15.7 %15.9  
 ( 10) %16.2  
 %18.4 (%49.9)  
 %13.1 %23.6  
 %49.6  
 (%60.6 %43.6)  
 (%15.4 %16.5 %19.3 )  
 (%31.2) (%16.5 %20.0 %12.8 )  
 (%12.3 %9.9)  
 %39.6  
 %36.7  
 %58.3 ( 10)  
 %60.0 %57.4  
 %49.6 %63.0  
 (%95.1) (%93.1)  
 %89.3  
 %11.3 %24.3 %60.3  
 %4.0



%35.5	%31.6			10	%32.9
	.	%38.9	%38.7		
	%15.3			10	%60.6
	%3.1		%8.4		%9.5
					.
				10	%23.8
(	10)	%6.2	.	%16.8	%17.3
	%6.0	.	%5.0	%6.9	
	%7.6	.	%8.5	%4.6	
%3.9		.	%10.7	%5.9	
%3.1	.	%3.7		%4.0	
		.			

2006

( 10)

:(2-7)

42.9	46.3	45.1	
40.1	34.0	36.2	
93.1	95.5	94.6	
49.1	45.7	46.9	
79.3	68.5	72.4	
76.9	57.6	64.5	
51.8	42.8	46.0	
42.8	51.9	48.6	
35.5	32.0	33.2	
94.1	96.4	95.6	
50.4	47.9	48.8	
80.8	70.3	74.1	
76.9	58.8	65.2	
52.5	44.3	47.2	
43.1	40.7	41.5	
44.7	36.2	39.2	
92.0	94.5	93.6	
47.8	43.4	45.0	
77.8	66.7	70.7	
76.9	56.4	63.7	
51.1	41.3	44.8	

:2006

.2006

:





2006	%34.6
------	-------

2006 %58.7 %33.3  
 .2006 %63.2

%32.0  
 %8.1 2006 %1.2  
 .2006

1987  
 %28.6 2006 %29.0 %34.6  
 .2006

.2006

%11.1

%30.8

:

**2006**

**:(1-8)**

413	3,138	26	
53	63	1	
187	1,552	27	
—	593	24	
<b>653</b>	<b>5,346</b>	<b>78</b>	

:-

- .2006

**.2008**

.2006

.2007

:

:

2006

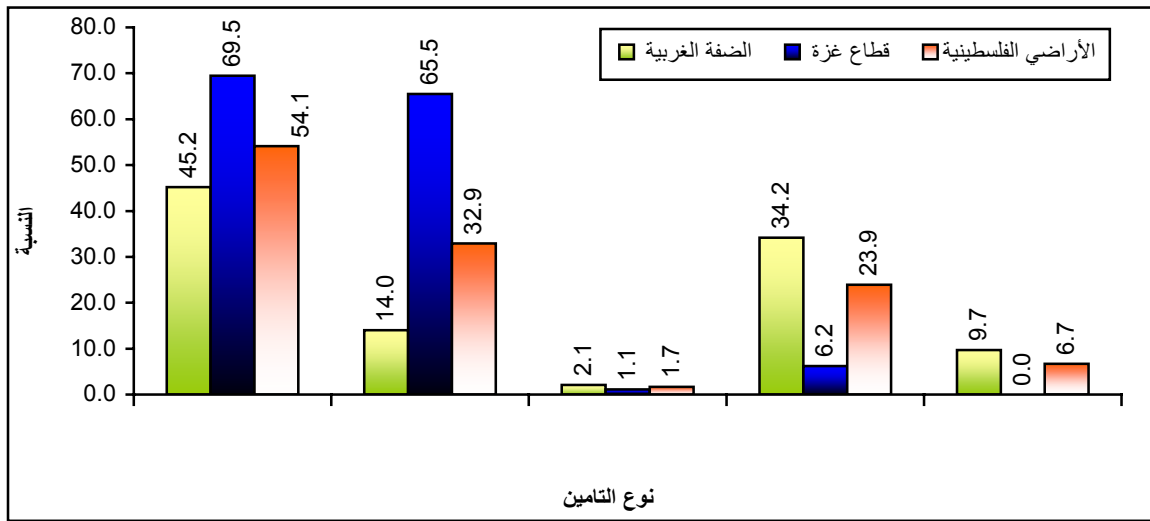
2004 -

:

•

2004

:(1-8)



- .2004

.2008

:

5

.2004

:

10

%18.3 2006

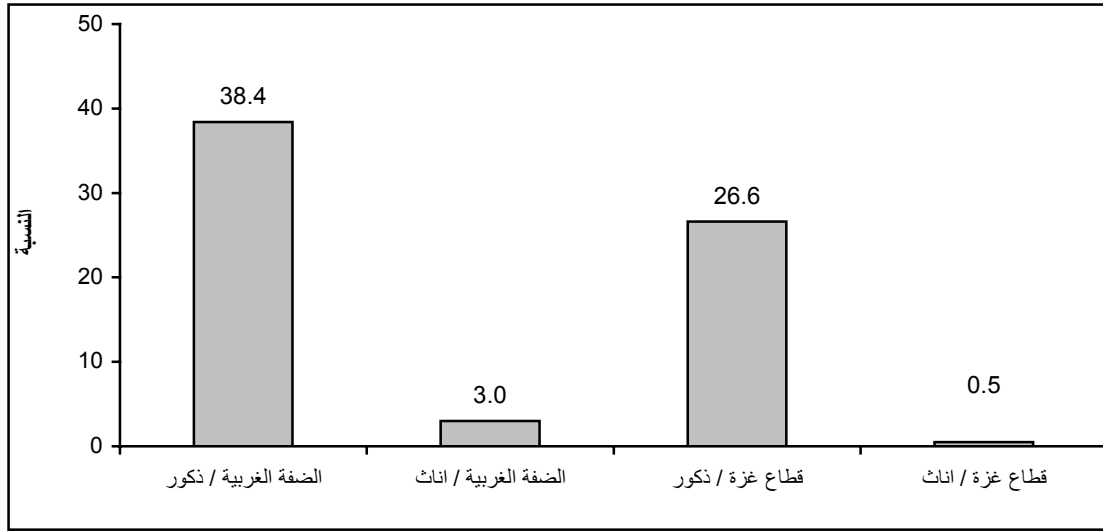
%.7.0

%38.4

%.0.5

%3.0

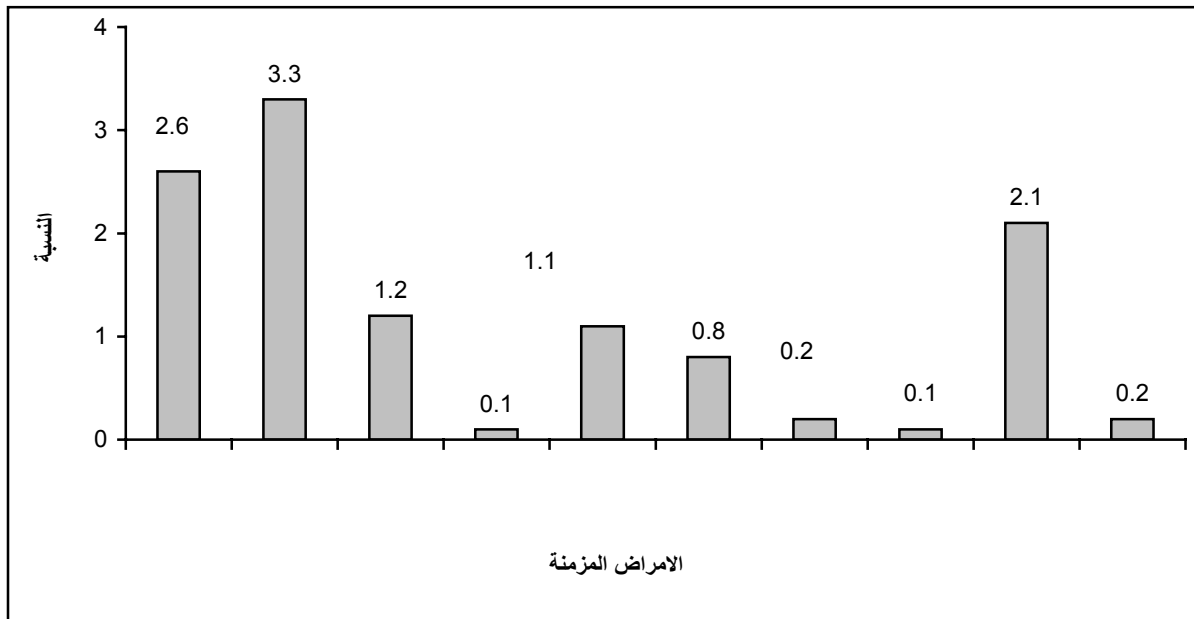
2006 ( 10 ) : (2-8)

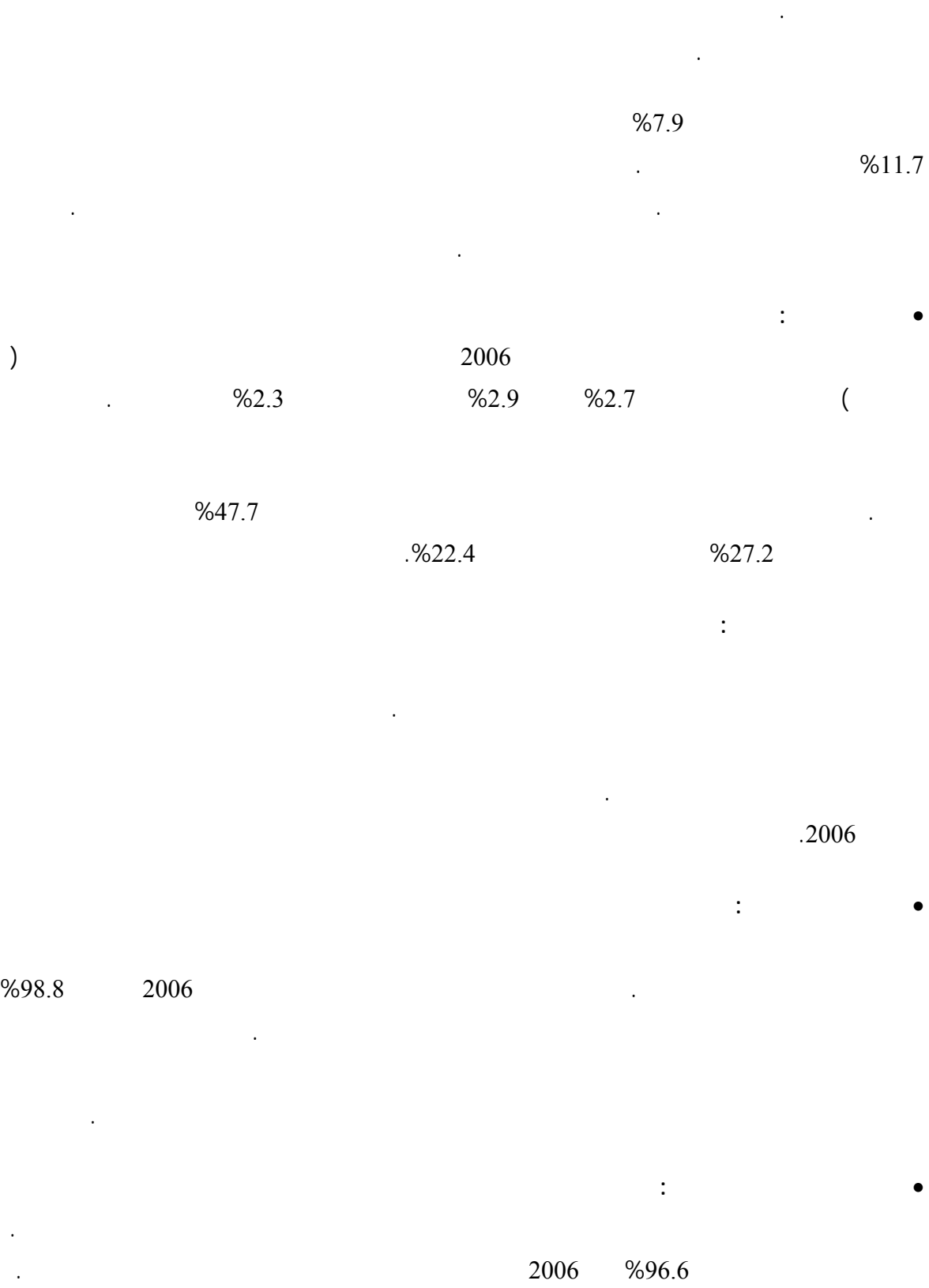


2006 %90.2

%9.8

2006 : (3-8)





%53.7

%24.9

.%7.1

: •

(2006-2002)

%30.0

%29.7

.%30.5

: •

( )

(5-0)

%26.5

2006

%27.2

%25.9

.%24.9

%28.0

: •

%10.2 ( )

%2.9 ( )

%1.4 ( )

.2006

.( %7.9 %13.2 )

:

<b>2007</b>	<b>%87.6</b>
-------------	--------------

2007 %87.6

%93.0 %84.8

.( %4.5 %8.7 ) %7.3

1.7

.( 3) %11.3

**2007**

**:(1-9)**

100	5.1	7.3	87.6		
100	6.5	8.7	84.8		
100	2.5	4.5	93.0		

- .2007 .2008 :

:

<b>%53.3</b>
--------------

%45.0

%53.3

%55.4

%49.2

**2007**

**:(2-9)**

<b>100</b>	0.2	0.5	45.0	53.3	1.0
<b>100</b>	0.3	0.6	42.5	55.4	1.2
<b>100</b>	0.0	0.3	50.0	49.2	0.5

- .2007 .2008 :

2006

2006 %56.9

%36.0

%97.8

%24.6 %0.4

:

2006 %90.8

( %88.4 %95.6 )

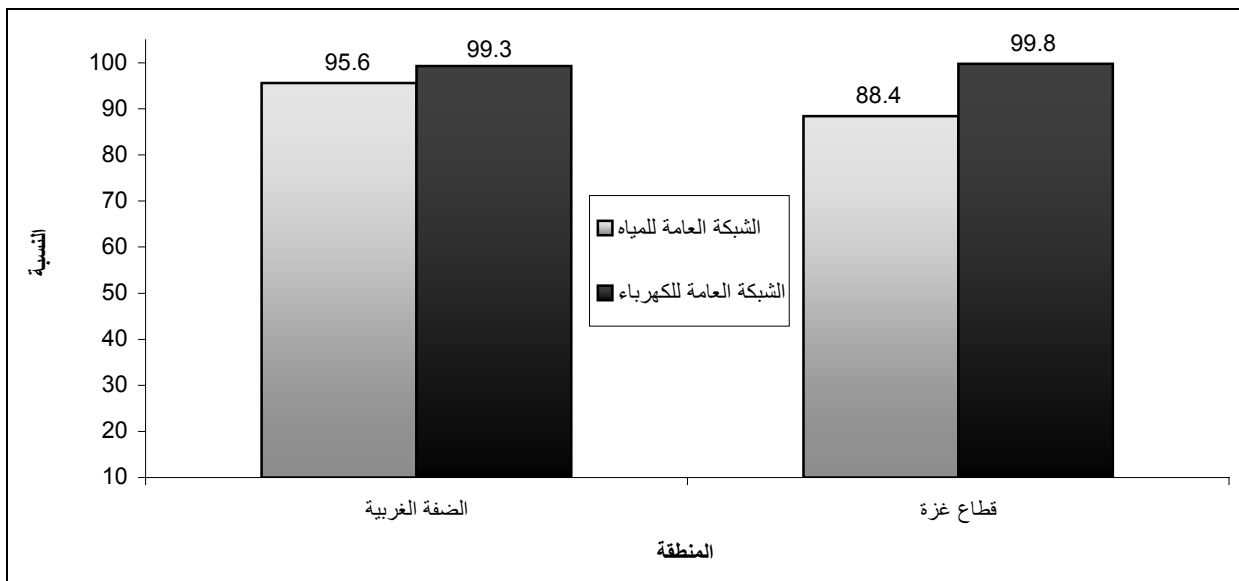
( 2006 )

%99.5

( %99.8 %99.3 )

2006

: (1-9)



2006  
( 2006 )

2006  
2006

:  
:







)	.2008		•
- .2004	.2008	.( 2005	•
.2006	.2008		•
.2006	.2007	-	•
- .2007	.2008	-	•
.2008	.2008		•
- .2007	.2008	-	•
14-2007/1/15)	. 2008		•
	.2008	-(2008/1/	•
-2008/2007	.2008	- .2006	•
-2007/2006	.2008		•
:2006	.2006		•
- .2006	.2008		•
- .2006	.2006		•
- .(2006 )	.2006		•
- .2007	.2008		•
	.2006	.2007	•
2007	.2008		•
- .( )			•
.1997	.2008		•