

(2008 )

(1) :  
2008 /

**2006**

.2008 - 1429 ©

:

(2008 )

.2008

. - .(1) :

:

- 1647 . .

(970/972) 2 242 6340 :

(970/972) 2 242 6343 :

diwan@pcbs.gov.ps :

<http://www.pcbs.gov.ps> :



2008

(PNA)

2008

(CFG)

.(SDC)

(CFG)

•

•

•

•

•

2005                      2002                      1996  
                                 2004                      2006    2005    1998

.2008

**2008**

<b>17</b>		:
<b>19</b>		:
<b>21</b>		:
21		1.3
21	2008	2.3
22	2008	3.3
22	2008	4.3
24	2008	5.3
<b>25</b>		

<b>27</b>	2008		<b>:1</b>
<b>28</b>			<b>:2</b>
		2008	
<b>29</b>	2008		<b>:3</b>
<b>30</b>			<b>:4</b>
		2008	
<b>31</b>	2008		<b>:5</b>
<b>33</b>	2008		<b>:6</b>
<b>35</b>		( / )	<b>:7</b>
		2008	
<b>21</b>	2008		<b>:1</b>
<b>22</b>	(2008 - 2000)		<b>:2</b>
<b>22</b>	2008		<b>:3</b>
<b>23</b>	2008		<b>:4</b>



2008

:

2008

3,957

2008

82

8,704

1,371.6

2008

2000

%8.4

%33.9

2007

%117.3

147

1,055

1,202

%.4.7

2007

86,684

2008

%75.9

2007

%43.6

%26.6 %27.8

207,809

.2007

2008

%96.0

.2008

( / ) 2.4

.1996

.2008

2000

2001



:

:

:

:

.1

.2

:

( )

:

:

:

:

/

:

:( )

( )

:( )

( )

( )

:

:

:

:

:

:

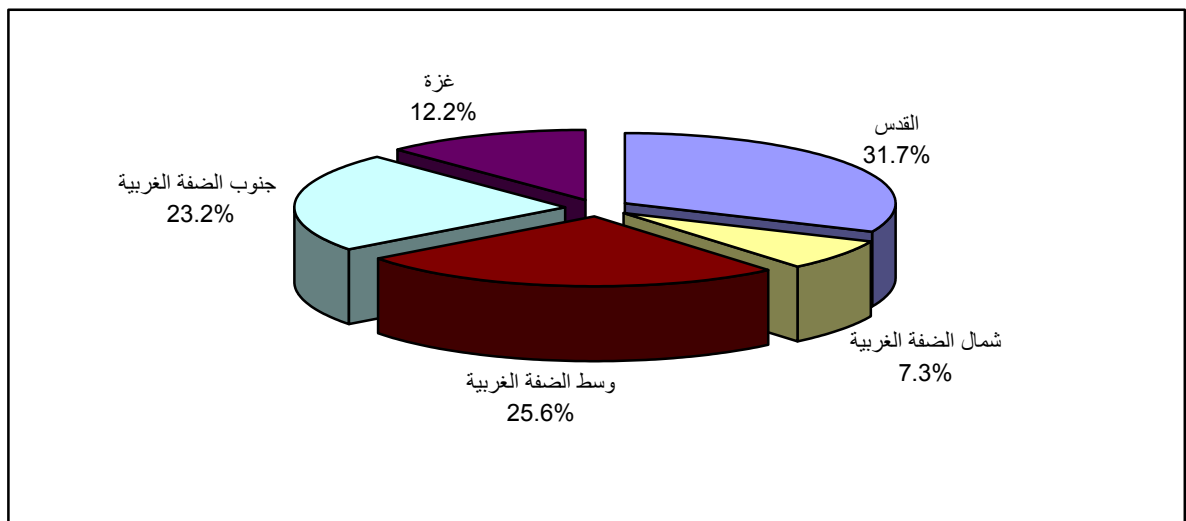
8,704      3,957      2008      118      82

2008				1.3
246	107	6 :		•
2,041	877	21 :		•
2,566	1,089	26 :		•
3,137	1,493	19 :		•
714	391	10 :		•

.2008

2008

:(1)



2008

2.3

%33.9

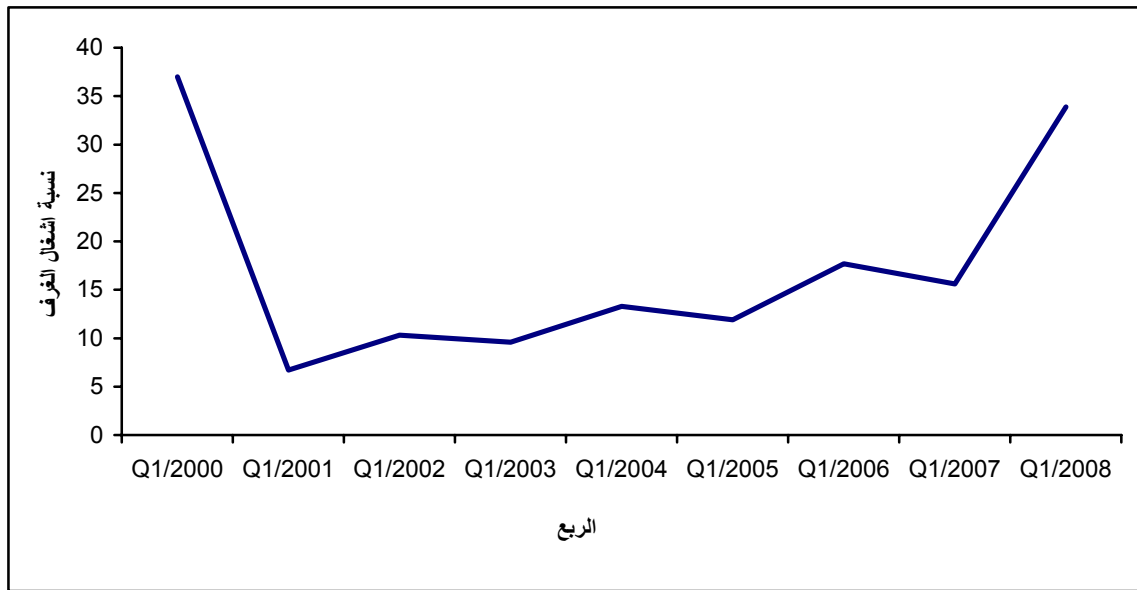
1,371.6

:

2001

(2008 - 2000)

:(2)



2008

3.3

147 1,055

1,202

98 842 940

49 213 262

2008

4.3

%18.4 86,684 2008

2007

%39.0

.%75.9

%43.6

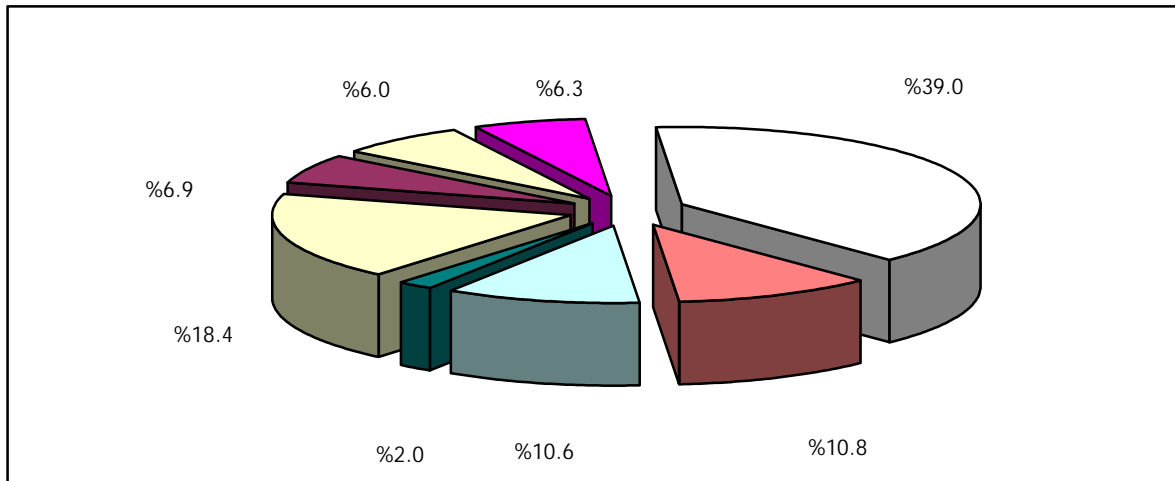
%26.6 %27.8

%0.7

%1.3

2008

:(3)

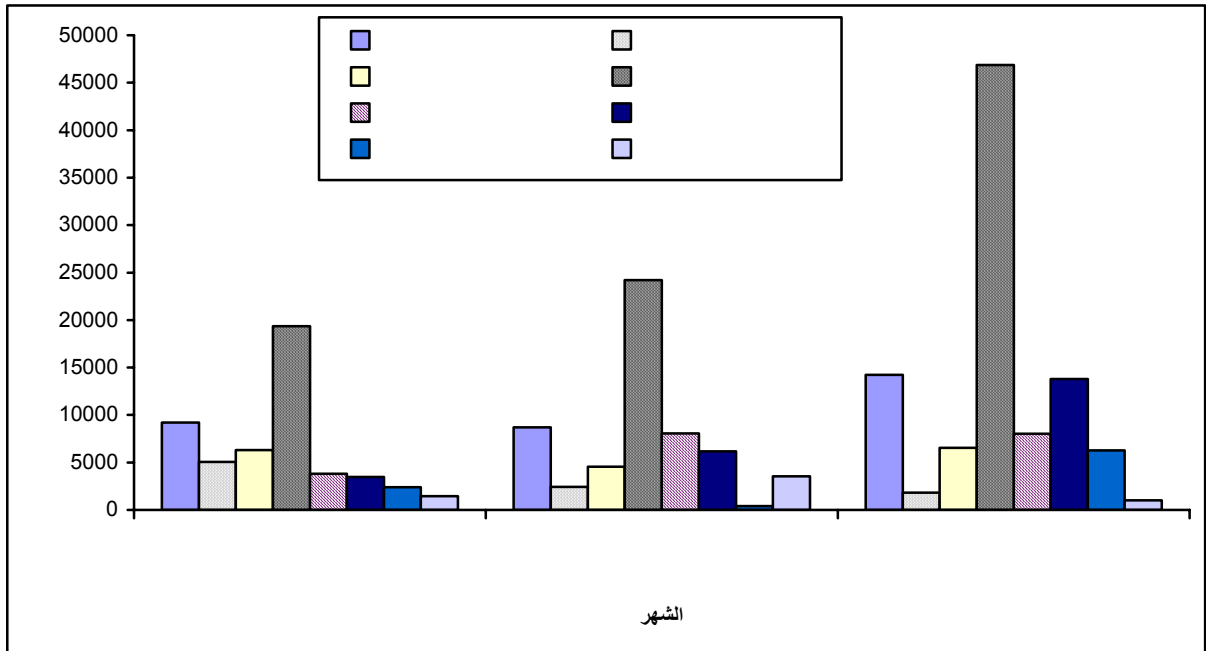


2008 207,809  
 %43.6 %15.5  
 .%8.4  
 .%96.0 2007

%19.6 %49.7 :

%1.9 %1.1 %27.7

2008 :(4)



2008 5.3

2.4

3.0

7.1  
 2.7 1.8 2.2

2008

2000



2000

2008

%4.3

%8.4 %18.3

**2000**

<b>2000</b>					<b>2008</b>	
<b>(%)</b>						
2008	2007	2005	2003	2001		
-15.5	-19.6	-14.4	-21.6	12.4	82	
-37.5	-34.4	-33.4	-35.6	23.3	1,202	
4.3	-40.7	-70.2	-86.1	-79.8	86,684	
-18.3	-58.3	-71.0	-84.1	-81.7	207,809	
-7.8	-57.5	-70.4	-79.2	-78.4	1,371.6	
-19.2	-58.3	-71.0	-84.1	-81.7	2,283.6	
-8.4	-57.8	-67.9	-74.0	-82.0	33.9	%
-22.0	-59.1	-68.1	-80.7	-84.8	25.7	%

# Tables

2008

:1

Table 1: Main Indicators for Hotel Activities by Month and Region During the First Quarter, 2008

Region	Month	Bed Occupancy		Room Occupancy		No. of Nights	No. of Guests	No. of Beds	No. of Rooms	No. of Operating Hotels	
		%	Average	%	Average						
<b>Palestinian Territory *</b>		<b>25.7</b>	<b>2283.6</b>	<b>33.9</b>	<b>1371.6</b>	<b>207809</b>	<b>86684</b>	<b>8885</b>	<b>4049</b>	<b>82</b>	
<b>All Regions</b>	<b>January</b>	<b>18.2</b>	<b>1647.8</b>	<b>23.1</b>	<b>953.5</b>	<b>51083</b>	<b>21427</b>	<b>9034</b>	<b>4135</b>	<b>82</b>	
	<b>February</b>	<b>22.5</b>	<b>2002.3</b>	<b>29.7</b>	<b>1206.6</b>	<b>58067</b>	<b>24036</b>	<b>8916</b>	<b>4056</b>	<b>82</b>	
	<b>March</b>	<b>36.6</b>	<b>3182.5</b>	<b>26.5</b>	<b>1049</b>	<b>98659</b>	<b>41221</b>	<b>8704</b>	<b>3957</b>	<b>82</b>	
North of West Bank	January	8.0	19.7	14.6	15.6	611	281	246	107	6	
	February	14.5	35.7	20.6	22.0	1034	486	246	107	6	
	March	8.7	21.3	14.6	15.6	661	328	246	107	6	
Middle of West Bank	January	19.9	417.8	29.4	266.5	12951	7059	2096	906	21	
	February	20.5	419.2	29.8	261.5	12156	6780	2041	877	21	
	March	24.8	507.1	44.1	386.9	15720	9266	2041	877	21	
Jerusalem	January	27.5	798.4	36.3	460.9	24751	8315	2901	1270	26	
	February	31.0	895.4	46.9	583.6	25966	8809	2890	1244	26	
	March	65.8	1687.4	83.0	1054.3	52310	20681	2566	1089	26	
South of West Bank	January	11.9	367.5	13.3	194.9	11394	5546	3077	1461	19	
	February	20.0	606.5	22.5	322.8	17588	7775	3025	1437	19	
	March	29.4	923.2	31.6	471.8	28618	10740	3137	1493	19	
Gaza Strip	January	6.2	44.4	4.0	15.5	1376	226	714	391	10	
	February	6.4	45.6	4.3	16.7	1323	186	714	391	10	
	March**	6.1	43.5	3.9	15.3	1350	206	714	391	10	**

\* Represents the quarter average except number of guests and number of guest nights which represent the total for the quarter.

\*\* Numbers of guests and guest nights represent the average in January and February 2008

.2008

2008

:2

Table 2: Number of Hotels and Rooms by Facilities and Region as of March, 2008

Region	Facilities								No. of Rooms	No. of Operating Hotels
	Internet	DVD	Air Conditioning	Heating	Refrigerator	T.V	Radio	Private Bathroom		
<b>Palestinian Territory</b>	<b>1743</b>	<b>112</b>	<b>514</b>	<b>3418</b>	<b>3486</b>	<b>3815</b>	<b>2840</b>	<b>3567</b>	<b>3957</b>	<b>82</b>
North of West Bank	0	0	0	93	93	93	93	93	107	6
Middle of West Bank	557	82	0	831	734	869	733	840	877	21
Jerusalem	388	30	120	1017	911	1080	495	891	1089	26
South of West Bank	375	0	11	1461	1369	1461	1154	1401	1493	19
Gaza Strip	423	0	383	16	379	312	365	342	391	10

2008

:3

**Table 3: Number of Hotels by Availability of Public Services and Region as of March, 2008**

Region	Public Services												No. of Operating Hotels
	Other	Room Services	Hair Dresser	Shops	Laundry	Photocopying	Cofeshop	Typing	Bar	Internet	Fax	Puplic Telephone	
<b>Palestinian Territory</b>	<b>22</b>	<b>62</b>	<b>6</b>	<b>10</b>	<b>56</b>	<b>56</b>	<b>32</b>	<b>47</b>	<b>20</b>	<b>50</b>	<b>65</b>	<b>42</b>	<b>82</b>
North of West bank	0	6	1	2	3	3	0	3	0	0	4	2	6
Middle of West bank	15	19	1	2	13	17	17	13	5	14	19	7	21
Jerusalem	1	18	3	4	32	18	14	15	7	23	26	21	26
South of West bank	6	18	1	2	8	17	1	15	8	12	15	7	19
Gaza Strip	0	1	0	0	0	1	0	1	0	1	1	5	10

2008

:4

**Table 4: Average Number of Workers in Hotels by Type of Work, Sex and Region During the First Quarter, 2008**

Region	Total		Operation		Administration		* No. of Operating Hotels *
	Females	Males	Females	Males	Females	Males	
<b>Palestinian Territory*</b>	<b>147</b>	<b>1055</b>	<b>98</b>	<b>842</b>	<b>49</b>	<b>213</b>	<b>82</b>
North of West Bank	8	42	4	29	4	13	6
Middle of West Bank	33	351	20	295	13	56	21
Jerusalem	55	348	38	289	17	59	26
South of West Bank	43	142	34	104	9	38	19
Gaza Strip	8	172	2	125	6	47	10

\* As in March, 2008

2008

\*

2008

:5

**Table 5: Number and Percentage of Guests by Nationality and Region During the First Quarter, 2008**

Region	Month	Nationality										No. of Operating Hotels
		U.S.A & Canada		Asia		Israel		Arab Countries		Palestine		
		%	Number	%	Number	%	Number	%	Number	%	Number	
<b>Palestinian Territory</b>		<b>6.9</b>	<b>5997</b>	<b>10.6</b>	<b>9183</b>	<b>6.0</b>	<b>5181</b>	<b>0.6</b>	<b>535</b>	<b>18.4</b>	<b>15987</b>	<b>82</b>
<b>All Regions</b>	<b>January</b>	<b>7.7</b>	<b>1657</b>	<b>6.3</b>	<b>1349</b>	<b>12.3</b>	<b>2638</b>	<b>1.0</b>	<b>219</b>	<b>19.7</b>	<b>4208</b>	<b>82</b>
	<b>February</b>	<b>6.7</b>	<b>1622</b>	<b>17.0</b>	<b>4084</b>	<b>6.1</b>	<b>1467</b>	<b>0.6</b>	<b>141</b>	<b>17.6</b>	<b>4210</b>	<b>82</b>
	<b>March</b>	<b>6.6</b>	<b>2718</b>	<b>9.1</b>	<b>3750</b>	<b>2.6</b>	<b>1076</b>	<b>0.4</b>	<b>175</b>	<b>18.4</b>	<b>7569</b>	<b>82</b>
North of West Bank	January	4.3	12	0.0	0	0.7	2	0.7	2	78.0	219	6
	February	9.1	44	0.2	1	0.0	0	0.2	1	62.9	306	6
	March	2.7	9	0.9	3	7.9	26	0.0	0	71.5	234	6
Middle of West Bank	January	7.8	551	0.3	24	3.3	236	3.0	212	48.3	3403	21
	February	7.8	529	40.3	2729	1.0	70	1.9	130	37.5	2543	21
	March	9.7	899	18.8	1745	1.1	103	1.8	167	47.5	4404	21
Jerusalem	January	9.8	816	7.6	635	18.2	1513	0.0	0	0.0	0	26
	February	7.6	671	7.3	643	12.4	1092	0.0	1	0.0	0	26
	March	7.3	1504	6.1	1256	3.9	807	0.0	2	0.0	2	26
South of West Bank	January	4.4	245	12.0	668	16.0	885	0.0	1	9.4	523	19
	February	4.6	358	9.1	707	3.8	296	0.1	5	16.8	1304	19
	March	2.6	279	6.8	733	1.2	134	0.0	2	26.7	2869	19
Gaza Strip	January	14.4	33	9.6	22	0.8	2	1.6	4	28.0	63	10
	February	10.7	20	2.1	4	5.0	9	2.1	4	30.7	57	10
	March	12.9	27	6.3	13	2.7	6	1.9	4	29.1	60	10

2008

:( ) 5

Table 5 (Cont.): Number and Percentage of Guests by Nationality and Region During the First Quarter, 2008

Region	Month	Total		Nationality									
				Australia & Newzeland		Africa		Other European Countries		European Union		Central & South America	
		%	العدد Number	%	العدد Number	%	العدد Number	%	العدد Number	%	العدد Number	%	العدد Number
<b>Palestinian Territory</b>		<b>100</b>	<b>86684</b>	<b>0.1</b>	<b>95</b>	<b>6.3</b>	<b>5495</b>	<b>10.8</b>	<b>9362</b>	<b>39.0</b>	<b>33766</b>	<b>1.3</b>	<b>1085</b>
<b>All Regions</b>	<b>January</b>	<b>100</b>	<b>21427</b>	<b>0.4</b>	<b>79</b>	<b>9.7</b>	<b>2080</b>	<b>7.5</b>	<b>1610</b>	<b>33.5</b>	<b>7188</b>	<b>1.9</b>	<b>400</b>
	<b>February</b>	<b>100</b>	<b>24036</b>	<b>0.0</b>	<b>10</b>	<b>1.5</b>	<b>354</b>	<b>9.1</b>	<b>2190</b>	<b>39.3</b>	<b>9443</b>	<b>2.1</b>	<b>514</b>
	<b>March</b>	<b>100</b>	<b>41221</b>	<b>0.0</b>	<b>6</b>	<b>7.4</b>	<b>3061</b>	<b>13.5</b>	<b>5562</b>	<b>41.6</b>	<b>17135</b>	<b>0.4</b>	<b>171</b>
North of West Bank	January	100	281	0.7	2	0.0	0	0.0	0	14.2	40	1.4	4
	February	100	486	0.0	0	0.0	0	0.0	0	27.4	133	0.2	1
	March	100	328	0.6	2	0.0	0	1.8	6	14.0	46	0.6	2
Middle of West Bank	January	100	7059	0.4	30	26.2	1852	0.5	33	8.6	605	1.6	113
	February	100	6780	0.1	5	0.1	7	1.2	82	9.1	616	1.0	69
	March	100	9266	0.0	4	6.7	619	1.6	146	11.9	1099	0.9	80
Jerusalem	January	100	8315	0.4	36	2.7	223	12.4	1034	45.5	3777	3.4	281
	February	100	8809	0.1	5	0.9	82	18.6	1639	49.5	4357	3.6	319
	March	100	20681	0.0	0	9.4	1951	23.5	4861	49.5	10241	0.3	57
South of West Bank	January	100	5546	0.2	11	0.1	5	9.8	541	48.1	2667	0.0	0
	February	100	7775	0.0	0	3.4	264	6.0	465	54.6	4251	1.6	125
	March	100	10740	0.0	0	4.6	490	5.1	546	52.7	5656	0.3	31
Gaza Strip	January	100	226	0.0	0	0.0	0	0.8	2	44.0	99	0.8	2
	February	100	186	0.0	0	0.7	1	2.1	4	46.6	86	0.0	0
	March	100	206	0.0	0	0.2	1	1.5	3	44.9	93	0.5	1



2008

:6

Table 6: Number and Percentage of Guest Nights by Nationality and Region During the First Quarter, 2008

Region	Month	Nationality										No. of Operating Hotels
		U.S.A & Canada		Asia		Israel		Arab Countries		Palestine		
		%	Number	%	Number	%	Number	%	Number	%	Number	
<b>Palestinian Territory</b>		<b>8.4</b>	<b>17525</b>	<b>9.6</b>	<b>19935</b>	<b>4.5</b>	<b>9338</b>	<b>0.6</b>	<b>1200</b>	<b>15.5</b>	<b>32125</b>	<b>82</b>
<b>All Regions</b>	<b>January</b>	<b>12.3</b>	<b>6303</b>	<b>7.5</b>	<b>3822</b>	<b>9.9</b>	<b>5072</b>	<b>0.8</b>	<b>396</b>	<b>18.0</b>	<b>9218</b>	<b>82</b>
	<b>February</b>	<b>7.8</b>	<b>4539</b>	<b>13.9</b>	<b>8059</b>	<b>4.2</b>	<b>2442</b>	<b>0.7</b>	<b>435</b>	<b>15.0</b>	<b>8693</b>	<b>82</b>
	<b>March</b>	<b>6.8</b>	<b>6683</b>	<b>8.2</b>	<b>8054</b>	<b>1.8</b>	<b>1824</b>	<b>0.4</b>	<b>369</b>	<b>14.4</b>	<b>14214</b>	<b>82</b>
North of West Bank	January	8.8	54	0.0	0	0.3	2	0.3	2	65.8	402	6
	February	6.7	69	0.2	2	0.0	0	1.1	11	65.8	680	6
	March	2.9	19	1.2	8	4.2	28	0.0	0	72.9	482	6
Middle of West Bank	January	6.8	882	1.4	186	2.5	330	2.6	331	59.3	7676	21
	February	6.4	778	25.7	3130	1.5	177	2.9	350	47.7	5796	21
	March	9.4	1473	13.1	2056	1.8	288	1.9	302	47.9	7527	21
Jerusalem	January	17.3	4271	10.9	2697	12.8	3157	0.0	0	0.0	0	26
	February	7.8	2030	12.0	3111	7.2	1864	0.0	2	0.0	0	26
	March	8.6	4490	7.2	3779	2.4	1261	0.0	2	0.0	2	26
South of West Bank	January	7.4	844	7.0	797	13.6	1552	0.0	1	7.3	830	19
	February	8.2	1444	10.2	1796	2.1	361	0.1	16	10.4	1822	19
	March	1.6	466	7.4	2130	0.7	211	0.0	6	20.4	5850	19
Gaza Strip	January	18.3	252	10.3	142	2.3	31	4.5	62	22.5	310	10
	February	16.5	218	1.5	20	3.0	40	4.3	56	29.9	395	10
	March	17.4	235	6.0	81	2.6	36	4.4	59	26.1	353	10

2008

:( ) 6

Table 6 (Cont.): Number and Percentage of Guest Nights by Nationality and Region During the First Quarter, 2008

Region	Month	Total		Nationality										الشهر
				& Australia NewZeland		Africa		Other European Countries		European Union		Central & South America		
		%	Number	%	Number	%	Number	%	Number	%	Number	%	Number	
<b>Palestinian Territory</b>		<b>100</b>	<b>207809</b>	<b>0.2</b>	<b>329</b>	<b>4.4</b>	<b>9061</b>	<b>11.3</b>	<b>23431</b>	<b>43.6</b>	<b>90523</b>	<b>2.1</b>	<b>4342</b>	
<b>All Regions</b>	<b>January</b>	<b>100</b>	<b>51083</b>	<b>0.5</b>	<b>240</b>	<b>4.7</b>	<b>2398</b>	<b>6.8</b>	<b>3489</b>	<b>37.9</b>	<b>19347</b>	<b>1.6</b>	<b>798</b>	
	<b>February</b>	<b>100</b>	<b>58067</b>	<b>0.1</b>	<b>47</b>	<b>0.7</b>	<b>401</b>	<b>10.6</b>	<b>6180</b>	<b>41.8</b>	<b>24224</b>	<b>5.2</b>	<b>3046</b>	
	<b>March</b>	<b>100</b>	<b>98659</b>	<b>0.0</b>	<b>42</b>	<b>6.3</b>	<b>6262</b>	<b>13.9</b>	<b>13762</b>	<b>47.6</b>	<b>46952</b>	<b>0.5</b>	<b>498</b>	
North of West Bank	January	100	611	3.3	20	0.0	0	0.0	0	16.4	100	5.1	31	
	February	100	1034	0.0	0	0.0	0	0.0	0	26.1	271	0.1	1	
	March	100	661	0.3	2	0.0	0	0.9	6	17.3	114	0.3	2	
Middle of West Bank	January	100	12951	0.8	98	14.7	1904	0.8	99	9.1	1187	2.0	258	
	February	100	12156	0.3	37	0.2	25	1.5	181	11.7	1431	2.1	251	
	March	100	15720	0.3	40	7.9	1236	2.0	307	13.6	2167	2.1	324	
Jerusalem	January	100	24751	0.4	111	1.9	459	9.7	2408	45.0	11152	2.0	496	
	February	100	25966	0.0	10	0.4	108	19.1	4971	44.3	11484	9.2	2386	
	March	100	52310	0.0	0	7.9	4148	22.5	11772	51.1	26723	0.3	133	
South of West Bank	January	100	11394	0.1	11	0.3	35	8.6	978	55.7	6346	0.0	0	
	February	100	17588	0.0	0	1.5	264	5.7	1008	59.5	10469	2.3	408	
	March	100	28618	0.0	0	3.1	876	5.8	1665	60.9	17382	0.1	32	
Gaza Strip	January	100	1376	0.0	0	0.0	0	0.3	4	40.8	562	1.0	13	
	February	100	1323	0.0	0	0.3	4	1.5	20	43.0	569	0.0	0	
	March	100	1350	0.0	0	0.1	2	0.9	12	41.9	566	0.5	7	

2008

( / )

:7

**Table 7: Average Length of Stay for the Guests in Hotels (Nights/Guest) by Region, Month and Nationality During the First Quarter, 2008**

Region	Month	Nationality					No. of Operating Hotels		
		U.S.A & Canada	Asia	Israel	Arab Countries	Palestine			
<b>Palestinian Territory</b>		<b>2.9</b>	<b>2.2</b>	<b>1.8</b>	<b>2.2</b>	<b>2.0</b>	<b>82</b>		
<b>All Regions</b>	<b>January</b>	<b>3.8</b>	<b>2.8</b>	<b>1.9</b>	<b>1.8</b>	<b>2.2</b>	<b>82</b>		
	<b>February</b>	<b>2.8</b>	<b>2.0</b>	<b>1.7</b>	<b>3.1</b>	<b>2.1</b>	<b>82</b>		
	<b>March</b>	<b>2.5</b>	<b>2.1</b>	<b>1.7</b>	<b>2.1</b>	<b>1.9</b>	<b>82</b>		
North of West Bank	January	4.5	0.0	1.0	1.0	1.8	6		
	February	1.6	2.0	0.0	11.0	2.2	6		
	March	2.1	2.7	1.1	0.0	2.1	6		
Middle of West Bank	January	1.6	7.8	1.4	1.6	2.3	21		
	February	1.5	1.1	2.5	2.7	2.3	21		
	March	1.6	1.2	2.8	1.8	1.7	21		
Jerusalem	January	5.2	4.2	2.1	0.0	0.0	26		
	February	3.0	4.8	1.7	2.0	0.0	26		
	March	3.0	3.0	1.6	1.0	1.0	26		
South of West Bank	January	3.4	1.2	1.8	1.0	1.6	19		
	February	4.0	2.5	1.2	3.2	1.4	19		
	March	1.7	2.9	1.6	3.0	2.0	19		
Gaza Strip	January	7.6	6.5	15.5	15.5	4.9	10		
	February	10.9	5.0	4.4	14.0	6.9	10		
	March	8.7	6.2	6.0	14.8	5.9	10		

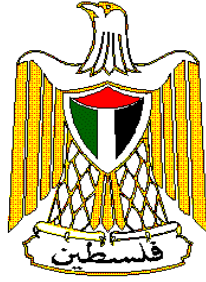
2008

( / )

:( ) 7

**Table 7 (Cont.): Average Length of Stay for the Guests in Hotels (Nights/Guest) by Region, Month and Nationality During the First Quarter, 2008**

Region	Month	Total	Nationality						
			Australia & New Zeland	Africa	Other European Count.	European Union	Central & South America		
<b>Palestinian Territory</b>		<b>2.4</b>	<b>3.5</b>	<b>1.6</b>	<b>2.5</b>	<b>2.7</b>	<b>4.0</b>		
<b>All Regions</b>	<b>January</b>	<b>2.4</b>	<b>3.0</b>	<b>1.2</b>	<b>2.2</b>	<b>2.7</b>	<b>2.0</b>		
	<b>February</b>	<b>2.4</b>	<b>4.7</b>	<b>1.1</b>	<b>2.8</b>	<b>2.6</b>	<b>5.9</b>		
	<b>March</b>	<b>2.4</b>	<b>7.0</b>	<b>2.0</b>	<b>2.5</b>	<b>2.7</b>	<b>2.9</b>		
North of West Bank	January	2.2	10.0	0.0	0.0	2.5	7.8		
	February	2.1	0.0	0.0	0.0	2.0	1.0		
	March	2.0	1.0	0.0	1.0	2.5	1.0		
Middle of West Bank	January	1.8	3.3	1.0	3.0	2.0	2.3		
	February	1.8	7.4	3.6	2.2	2.3	3.6		
	March	1.7	10.0	2.0	2.1	2.0	4.1		
Jerusalem	January	3.0	3.1	2.1	2.3	3.0	1.8		
	February	2.9	2.0	1.3	3.0	2.6	7.5		
	March	2.5	0.0	2.1	2.4	2.6	2.3		
South of West Bank	January	2.1	1.0	7.0	1.8	2.4	0.0		
	February	2.3	0.0	1.0	2.2	2.5	3.3		
	March	2.7	0.0	1.8	3.0	3.1	1.0		
Gaza Strip	January	6.1	0.0	0.0	2.0	5.7	6.5		
	February	7.1	0.0	4.0	5.0	6.6	0.0		
	March	6.6	0.0	2.0	4.0	6.1	7.0		



**Palestinian National Authority  
Palestinian Central Bureau of Statistics**

**Hotel Activities in the Palestinian Territory  
(First Quarter 2008)  
Executive Summary**

**Volume 14, Issue No. (1)  
May, 2008**

"Cover price 2 US\$"

PAGE NUMBERS OF ENGLISH TEXT ARE PRINTED IN SQUARE BRACKETS.  
TABLES ARE PRINTED IN THE ARABIC ORDER (FROM RIGHT TO LEFT)

**This document is prepared in accordance with the  
standard procedures stated in the Code of Practice for  
Palestine Official Statistics 2006**

© May, 2008  
All rights reserved.

**Suggested Citation:**

**Palestinian Central Bureau of Statistics, 2008.** *Hotel Activities in the Palestinian Territory, (First Quarter, 2008) Executive Summary.* Ramallah - Palestine.

All correspondence should be directed to:  
**Palestinian Central Bureau of Statistics**  
P.O.Box 1647, Ramallah, Palestine.

Tel: (972/970) 2 242 6340  
Fax: (972/970) 2 242 6343  
E-Mail :diwan@pcbs.gov.ps  
Web-Site: <http://www.pcbs.gov.ps>

## **Acknowledgment**

**The success of the Palestinian Central Bureau of Statistics (PCBS') fieldwork teams could not be possible without the kind reception and full cooperation of the hotels' owners and managers. The PCBS expresses its gratitude to all of them and appreciates their commitment to bringing this achievement into light.**

**The funding for this survey (Hotel Activities in the Palestinian Territory: First Quarter 2008) was provided by the Palestinian National Authority (PNA), and the Core Funding Group (CFG) for 2008. CFG member include Representative Office of Norway to PNA; Representative Office of Netherlands to PNA; Swiss Agency for Development and Cooperation (SDC).**

**On this occasion, the PCBS extends special thanks to the members of the Core Funding Group (CFG) who contributed in funding this survey for their support.**

## Team Work

- **Report Preparation**

Fathi Farasin

- **Preliminary Review**

Bassam Abdullah

Mahmoud Abdalrahman

- **Dissemination Standard**

Hanan Janajreh

- **Final Review**

Mahmoud Jaradat

- **Overall Supervision**

Luay Shabaneh, Ph.D

PCBS President



## **Preface**

The Palestinian tourism sector has the potential to be a main contributor to the GDP in Palestine. However, the tourism industry is crippled by a multiplicity of problems especially the political situation, which must be overcome.

The Palestinian Central Bureau of Statistics (PCBS) started publishing reports about hotel activities since the first quarter of 1996. PCBS is pleased to present the first issue of the fourteenth volume on "Hotel Activities in the Palestinian Territory" which covers statistics on the hotel industry for the first quarter of 2008.

PCBS has implemented several surveys to cover the supply and demand sides of tourism, including Hotel Activity survey in the Palestinian Territory, a survey continuous and lasting since 1996, and a survey of Tourism Activities 2002, were also implemented Domestic Tourism survey for the years 1998, 2005 and 2006, in addition to the survey of Outbound Tourism in 2004, a survey of Inbound Tourism 2005, to cover an important aspect of tourist demand, an additional step for the further implementation of surveys related tourism statistics, in order to build the database necessary to establish the tourism satellite accounts (TSA) in the Palestinian Territory.

The data of hotel activities of this quarter was also collected during the Israeli siege and closure imposed on the Palestinian Territory, which reflects a decreasing for the main indicators comparing with the same quarter of the year 2000, but this decrease is low compared with the same quarters in the previous six years, which reflects a slight improvement during this period.

This report addresses the main indicators of the hotel industry. These indicators include the number of operating hotels, number of rooms and beds, public facilities in the surveyed hotels, number of employed persons in hotels, number of guest nights in the reference period, number of guests by nationality and rates of bed and room occupancy.

We hope that the Hotel Activities survey in the Palestinian Territory conducted by the PCBS comprises a step towards a comprehensive statistical program encompassing all aspects of tourism activities according to the latest international standards.

**May, 2008**

**Luay Shabaneh, Ph.D**  
**President**

## Table of Contents

<b>Subject</b>	<b>Page</b>
List of Tables and Figures	
Executive Summary	
Chapter One: <b>Introduction</b>	<b>[15]</b>
Chapter Two: <b>Concepts and Definitions</b>	<b>[17]</b>
Chapter Three: <b>Main Findings</b>	<b>[19]</b>
3.1 Hotels and Capacity During the First Quarter 2008	[19]
3.2 Room Occupancy During the First Quarter 2008	[19]
3.3 Hotel Workers During the First Quarter 2008	[20]
3.4 Guests and Occupancy During the First Quarter 2008	[20]
3.5 Average Length of Stay During the First Quarter 2008	[22]
<b>Tables</b>	<b>25</b>



## **List of Tables and Figures**

<b>Table</b>	<b>Page</b>
<b>Table 1:</b> Main Indicators for Hotel Activities by Month and Region During the First Quarter, 2008	<b>27</b>
<b>Table 2:</b> Number of Hotels and Rooms by Facilities and Region as of March, 2008	<b>28</b>
<b>Table 3:</b> Number of Hotels by Availability of Public Services and Region as of March, 2008	<b>29</b>
<b>Table 4:</b> Average Number of Workers in Hotels by Type of Work, Sex and Region During the First Quarter, 2008	<b>30</b>
<b>Table 5:</b> Number and Percentage of Guests by Nationality and Region During the First Quarter, 2008	<b>31</b>
<b>Table 6:</b> Number and Percentage of Guest Nights by Nationality and Region During the First Quarter, 2008	<b>33</b>
<b>Table 7:</b> Average Length of Stay for the Guests in Hotels (Nights/Guest) by Region, Month and Nationality During the First Quarter, 2008	<b>35</b>
<b>Figures</b>	
<b>Figure 1:</b> Percentage Distribution of Operating Hotels by Region as of March, 2008	<b>[19]</b>
<b>Figure 2:</b> Room Occupancy Percent During the First Quarter (2000 - 2008)	<b>[20]</b>
<b>Figure 3:</b> Percentage Distribution of Guests by Nationality During the First Quarter, 2008	<b>[21]</b>
<b>Figure 4:</b> Number of Guest Nights by Nationality During the First Quarter 2008	<b>[21]</b>

## Executive Summary

Results reveal that, there are 82 operating hotels in March 2008, offers 3,957 rooms with total available beds of 8,704.

- Average occupancy of rooms was 1,371.6, it declined by 7.8% during the first quarter 2008 compared with the same quarter of the year 2000, while the average occupancy in the same quarter of the year 2007 it was increased by 117.1%.
- The percentage of room occupancy was 33.9%, it declined by 8.4% during the first quarter 2008 compared with the same quarter of the year 2000, while the percentage of room occupancy in the same quarter of the year 2007 it was increased by 117.3%.
- The number of workers in the hotels administration were 262 of which 213 are males and 49 are females. There were 940 workers in hotels services, of which 842 are males and 98 are females.
- During the first quarter 2008, the total number of guests to the Palestinian Territory hotels reached 86,684 they increased by percentage of 75.9%, compared with the same quarter of the year 2007.
- Most of the guests were in Jerusalem with a percentage of of 43.6% from the guests total, where as the percentage reached up to 27.8% in the Middle of the West Bank and 26.6% in the South of the West Bank hotels, and 1.3% in North of the West Bank hotels, while percentage of guests in Gaza Strip hotels was 0.7%.
- Total number of nights was 207,809. It increased by 96.0% compared with the corresponding quarter in the year 2007.
- The average length of stay in the Palestinian hotels was 2.4 nights per guest during the first quarter 2008.

## Chapter One

### **Introduction**

Tourism is considered as a cornerstone of the Palestinian economy because there are many attractive touristic resorts for people of different interests. Therefore, PCBS commenced to collect statistical data on tourism and monitor hotel activities through a comprehensive survey since 1996, and on regular basis. Such activity followed the World Tourism Organization and European Union recommendations. It is aimed to produce a comprehensive database and time series of basic indicators of hotel industry, hoping to enable the development and promotion of the tourism industry in Palestine.

This survey is carried out on monthly basis using a specifically designed questionnaire about hotel guests, nights, workers and facilities.

A quarterly report is regularly produced and a collective comprehensive report is produced annually. This publication presents data on hotels for the first quarter 2008, which its results indicate that the rate of decline is the lowest compared to the previous seven years.



## Chapter Two

### Concepts and Definitions

This section presents the main concepts and definitions used to derive the main indicators of tourism statistics. These concepts and definitions are based on international recommendations in the field of tourism statistics, and they are the same in all subjects in Palestinian Central Bureau of Statistics. The main concepts and expressions mentioned in this report were as follows:

#### **Hotel:**

It is defined as an accommodation establishment providing overnight lodging for the visitors in a room or unit. It should hold a number of persons exceeding that of an average single family. The establishment must be under one management, and provides different facilities and services to visitors.

#### **Hotel Workers:**

It refers to all persons working in the hotel on full or part time bases including owners and paid or unpaid household members.

#### **Number of Rooms:**

It refers to the furnished rooms for the use of guests. Such rooms might be single, double, triple, or quadruple. Rooms involving more than four beds were classified under (others) in the questionnaire. As for the suite, it is usually comprised of one bedroom or more, a living room and private toilet facilities.

#### **Available Beds and Rooms:**

It refers to beds and rooms, which are ready for use during the reference period. Closed rooms for maintenance or repairs are excluded.

#### **Guests:**

It refers to visitors staying in the hotels and using their facilities in return for a certain charge. Records of new guests are based on the number of visits regardless whether it's the same person or different.

#### **Number of Guest Nights:**

Number of beds booked for hotel guests. Such beds are considered as occupied whether they were actually used or not. It is measured by guest night unit.

#### **Room Occupancy:**

Number of booked and paid rooms. Such rooms are considered occupied whether they were actually used or not.

#### **Bed Occupancy:**

Number of booked and paid beds. Such beds are considered occupied whether they were actually used or not.

#### **Average (rooms, beds) Occupancy:**

It is defined as the total number of occupied (rooms, beds) divided by number of days



**Average Length of Stay:**

Represents the total of guest nights by nationality divided by number of guests of the same nationality .

**Percentage of (rooms, beds) Occupancy:**

It is defined as the average of (rooms, beds) occupancy divided by available (rooms, beds) multiplied by one hundred.

**North of West Bank Region:**

Jenin, Tulkarm, Nablus, Qalqiliya, Salfit and Tubas governorates.

**Middle of West Bank Region:**

Ramallah and Al-Bireh, Jericho and Al-Aghwar governorates.

**Jerusalem Region:**

Jerusalem governorate.

**South of West Bank Region:**

Bethlehem and Hebron governorates.

**Gaza Strip:**

North Gaza, Gaza, Deir Al-Balah, Khan Yunis and Rafah governorates.

## Main Findings

The total number of hotels in the Palestinian Territory is 118 hotels, including the temporary closed ones. There are 82 operating hotels in March 2008, that offer 3,957 rooms with total available beds of 8,704.

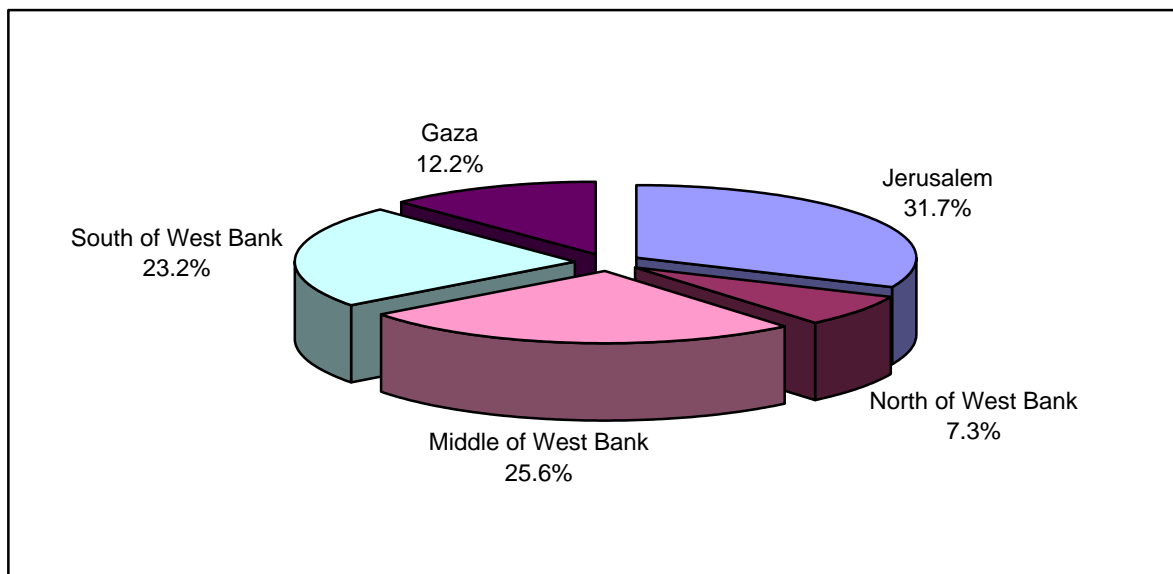
### 3.1 Hotels and Capacity During the First Quarter 2008

The operating hotels within the Palestinian Territory as in March 2008, are distributed as follows:

- North of West Bank: 6 hotels including 107 rooms comprising 246 beds.
- Middle of West Bank: 21 hotels including 877 rooms comprising 2,041 beds.
- Jerusalem Region: 26 hotels including 1,089 rooms comprising 2,566 beds.
- South of West Bank: 19 hotels including 1,493 rooms comprising 3,137 beds.
- Gaza Strip: 10 hotels including 391 rooms comprising 714 beds.

The figure below shows the percentage distribution of operating hotels by region as of March 2008.

**Figure (1): Percentage Distribution of Operating Hotels by Region as of March, 2008**

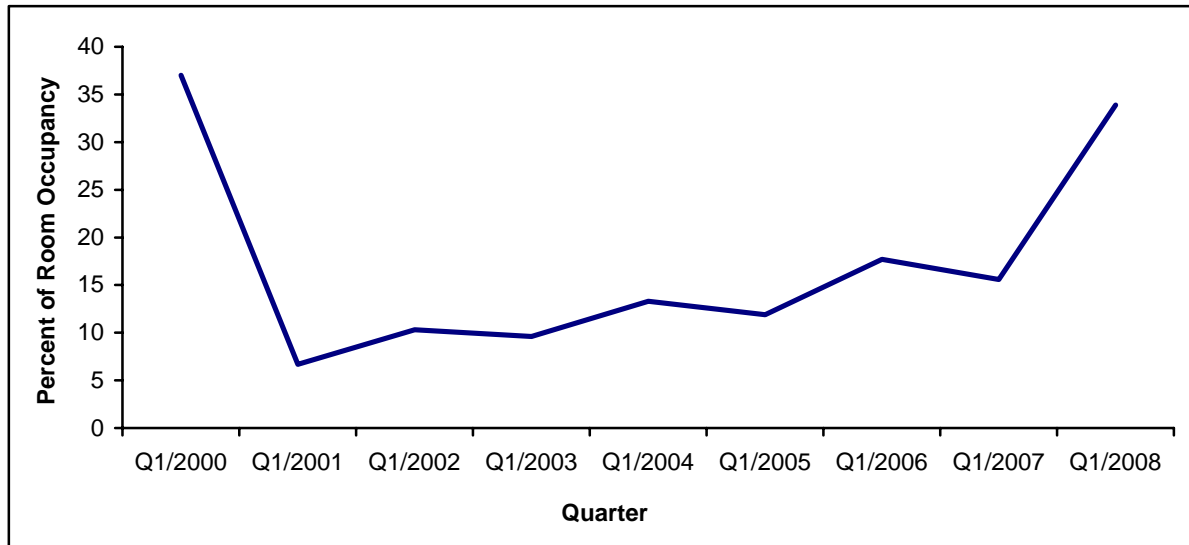


### 3.2 Room Occupancy During the First Quarter 2008

The average occupancy of rooms in the Palestinian hotels was 1,371.6 and the percentage occupancy of rooms was 33.9%.

The value of this indicator showed a clear increase in comparison with the first quarter of the last seven years. The figure below presents the average occupancy of rooms during the first quarter for the years from 2000 to 2008:

**Figure (2): Room Occupancy Percent During the First Quarter (2000 - 2008)**



### **3.3 Hotel Workers During the First Quarter 2008**

The number of workers in the hotels administration were 262 of which 213 are males and 49 are females. There were 940 workers in hotels services, of which 842 are males and 98 are females.

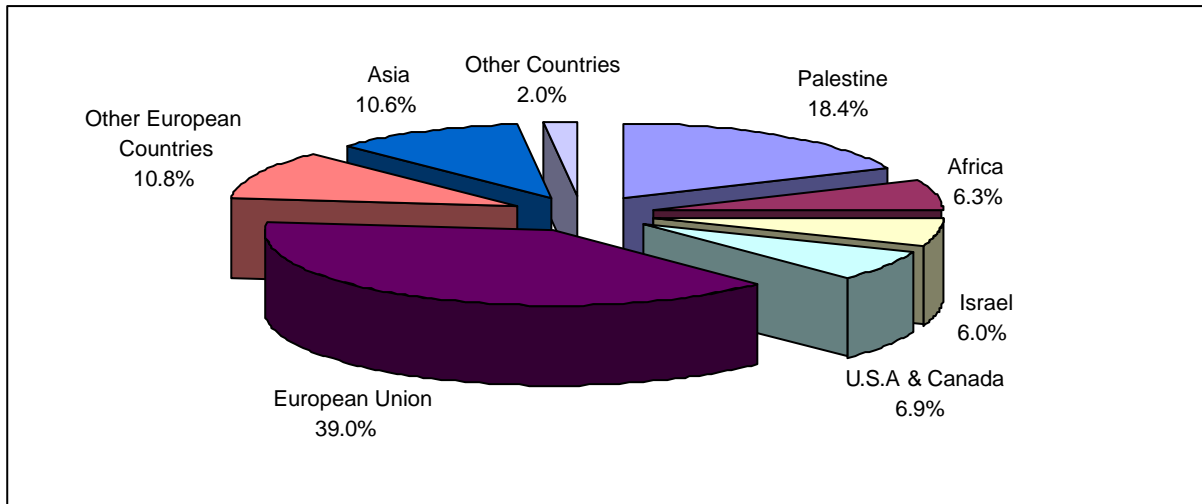
### **3.4 Guests and Occupancy During the First Quarter 2008**

The total number of guests to the Palestinian hotels was 86,684 persons, of which 18.4% of them were Palestinian guests, and 39.0% were from the European Union countries. The number of guests increased to 75.9%, compared with the same quarter of the year 2007.

Most of those guests were in Jerusalem hotels with a percentage of 43.6% from the guests total, whereas the percentage reached up to 27.8% in the Middle of the West Bank hotels, it reached 26.6% in the South of the West Bank hotels, and 1.3% in North of the West Bank hotels, while the percentage of guests in Gaza Strip hotels was 0.7%.

The percentage distribution of guests by nationality is as in the figure below.

**Figure (3): Percentage Distribution of Guests by Nationality During the First Quarter, 2008**

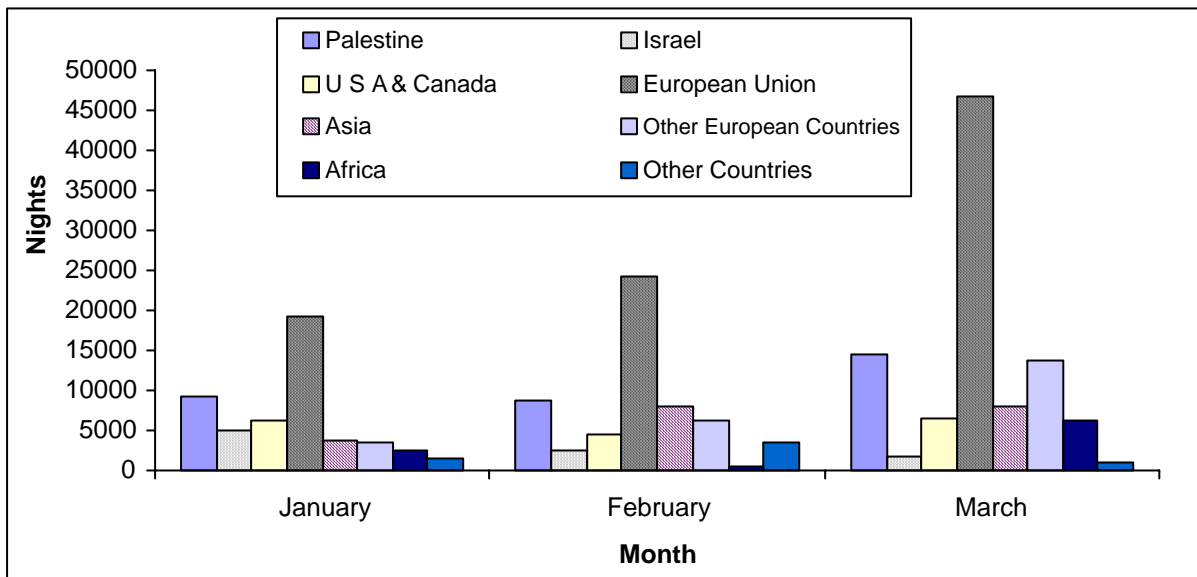


The total number of guest nights in the Palestinian hotels during the first quarter 2008 was 207,809 nights, of which 15.5% of these nights was occupied by Palestinian guests, while 43.6% by the guests whom arrived from European Union countries, and 8.4% of these nights were occupied by the guests whom arrived from the United States and Canada.

Whereas the guests spent 49.7% of those nights in Jerusalem hotels, while they spent 19.6%, 27.7%, 1.1% in the Middle, South, and North of the West Bank respectively, while the percentage of guest nights in Gaza Strip hotels was 1.9%.

The distribution of guests by nationality and month during this quarter are presented in the figure below.

**Figure (4): Number of Guest Nights by Nationality During the First Quarter, 2008**



### 3.5 Average Length of Stay During the First Quarter 2008

The average length of stay in the Palestinian hotels was 2.4 nights per guest, and the highest average was 7.1 nights in the Gaza Strip hotels, while in the North, Middle and South of the West Bank was 2.2, 1.8, 2.7 nights per guest respectively, whereas the average length of stay in Jerusalem hotels were 3.0 nights per guest.

The table below presents the main results of the first quarter of 2008, and explains the changes occurred on the main indicators of the Palestinian hotels activities, due to the Israeli siege, compared with the same quarter of the year 2000.

When comparing the results of the first quarter of 2008 with the same period in 2000, we note the decline in the volume of main hotel indicators except the number of guests which records a high number since that time by an increase of about 4.3%, where the decrease in the number of nights and room occupancy rate reached 18.3% and 8.4% respectively, but this rate of decline is the lowest compared to previous years, having started these reductions recede gradually since 2001.

**Percentage Change in the Variables During the First Quarter of the Years  
2001-2008, in Compare with the First Quarter 2000**

The Indicator	Value During the 4 <sup>th</sup> Quarter 2008	Percentage change (%) comparing with 4 <sup>th</sup> Quarter 2000				
		2001	2003	2005	2007	2008
Number of operating hotels	82	12.4	-21.6	-14.4	-19.6	-15.5
Average number of workers	1,202	23.3	-35.6	-33.4	-34.4	-37.5
Number of guests	86,684	-79.8	-86.1	-70.2	-40.7	4.3
Number of guest nights	207,809	-81.7	-84.1	-71.0	-58.3	-18.3
Average occupancy of rooms	1,371.6	-78.4	-79.2	-70.4	-57.5	-7.8
Average occupancy of beds	2,283.6	-81.7	-84.1	-71.0	-58.3	-19.2
Percentage occupancy of rooms %	33.9	-82.0	-74.0	-67.9	-57.8	-8.4
Percentage occupancy of beds %	25.7	-84.8	-80.7	-68.1	-59.1	-22.0