

**2007**

**2007 /**

:

<http://atlas.pcbs.gov.ps>

<http://www.pcbs.gov.ps>



**2006**

.2007 - 1428 ©

:

**.2007**

- .2007

:

/

**1647 : .**

(970/972) 2 240 6343 :

(970/972) 2 240 6340 :

<http://www.pcbs.gov.ps> :

[diwan@pcbs.gov.ps](mailto:diwan@pcbs.gov.ps) :



2007 -



2007

(PNA)

2007 (CFG)

.(SDC)

(CFG)



•

•

•

•

•





(7/11)

2007

1997 –

2007



<b>27</b>	:
<b>29</b>	:
<b>37</b>	:
<b>42</b>	:
<b>49</b>	:
<b>52</b>	:
<b>56</b>	:
<b>62</b>	:
<b>70</b>	:
<b>74</b>	:



( )

( )

:

:

:

:

1000

:

1000

:

:

1000

:

1000

:

:

(

(

)

)

:

15

:

:

:

( )

:

:

( )

:

:

:

:( )

:

( )

:

:

35)

( )

:

.( )

:

.1 :

.2

( )

.3

(1) :

(2)

(3)

(4)

2)

:

(

:( )

:

)

:

.(

:

:

:

:

:

الجهة المسؤولة عن المدرسة قانونيا واداريا. إما أن تكون حكومية أو وكالة الغوث أو خاصة.

:

:

( )

10

:

:

:

:

:

( )

( )

( )

( )

:

:

:

:

:

:

...



.)  
(  
( )

:

:

:

:( )

):

:

.(

( )

:

:

:

•

:

•

:

•

:

•

:

.( ... ) .

:

:

:

:

( - - )

:

: : .1 :

: .2

: .3

: :

: .1

: .2

: .3

:

: : .1

: .2

: .3

:

:

10 )  
( ...  
... ( )

			:
32	(49-25)	2004	:(1-2)
			:
43		2007	15 : (1-4)
47	2004		(17-5) : (2-4)
			:
49			:(1-5)
50			:(2-5)
		2005	:
52		( 15)	:(1-6)
		2006	:
53	( 15)		:(2-6)
		2006	:
54		2007/2006	:(3-6)
			:
58			:(1-7)
		2006	:
60	2006	( 10)	:(2-7)
			:
63	توزيع مؤسسات الرعاية الصحية في الأراضي الفلسطينية حسب القطاع الصحي المشرف 2005		:(1-8)
			:
70	2006		:(1-9)
70	2006		:(2-9)
72	2006		:(3-9)



		:
<b>30</b>	2007	:(1-2)
<b>31</b>	(2006 1997)	:(2-2)
<b>33</b>	(2007-1997)	:(3-2)
<b>34</b>	2007	:(4-2)
		:
<b>37</b>	2006	:(1-3)
<b>38</b>		:(2-3)
	(2006-1996)	
<b>40</b>		:(3-3)
	(2006-1996)	
		:
<b>45</b>	)	:(1-4)
	(2007	
		:
<b>53</b>	( 15)	:(1-6)
	2006	
		:
<b>64</b>	.2004	:(1-8)
<b>65</b>	2006 ( 10)	:(2-8)
<b>66</b>		:(3-8)
	2006	
		:
<b>71</b>	2006	:(1-9)





					:			
								↔
		(%45.4)	2007		(14-0)			↔
	(%3.0)		2007		65			↔
	4.2	4.6		2006				↔
						5.4		
73.3	71.8		2007					↔
							%81.2	↔
			.2006					
2006								↔
			.%8.3					
			.2007					↔
		(%23.5)						↔
					(%34.1)			
.2007						75		↔
		591		2006				↔
	%51.5						%29.5	↔
			. 2005					
		2006			15	%6.5		↔
	.2006	(%2.9)				%10.2		↔
		2005				%36.0		↔
2006						%30.0		↔
.(%30.5)				(%29.7)				
.2006					100	10		↔
				2006				↔
.(	%89.9		%98.3		%92.3)			



## مقدمة

( )

2007

2008



:

**102.8**

2007

.2008

2007

2007

(%17.0)

2007

(%18.9)

(%15.8)

(%43.5)

(%45.4)

(14-0)

( 65)

(%48.5)

(%3.2)

(%3.0)

2007

(%2.5)

17.9

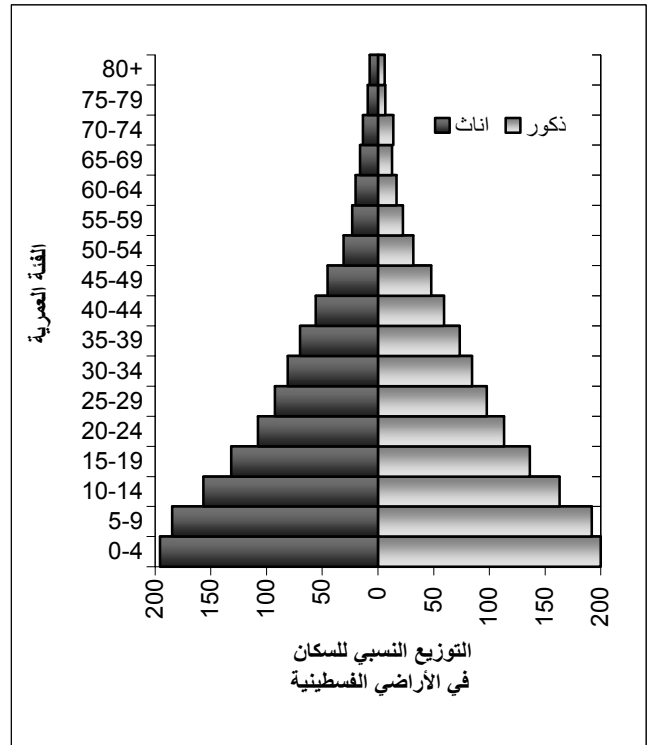
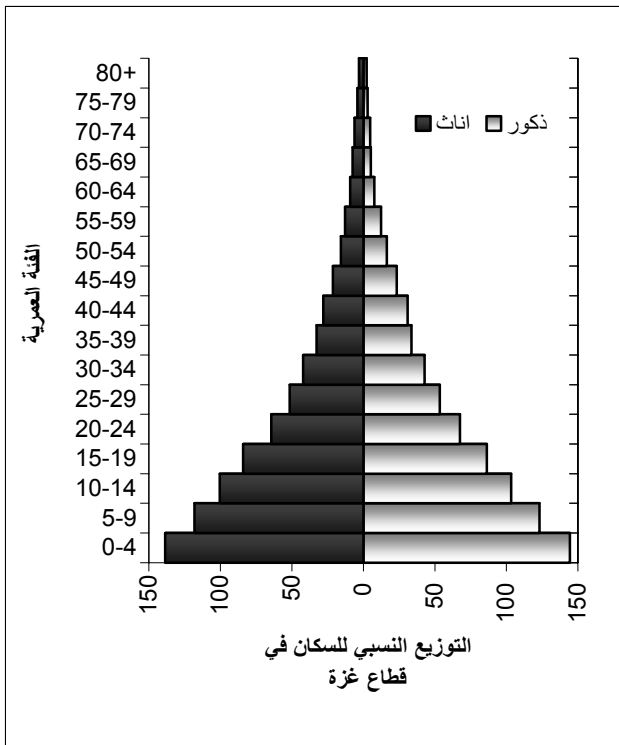
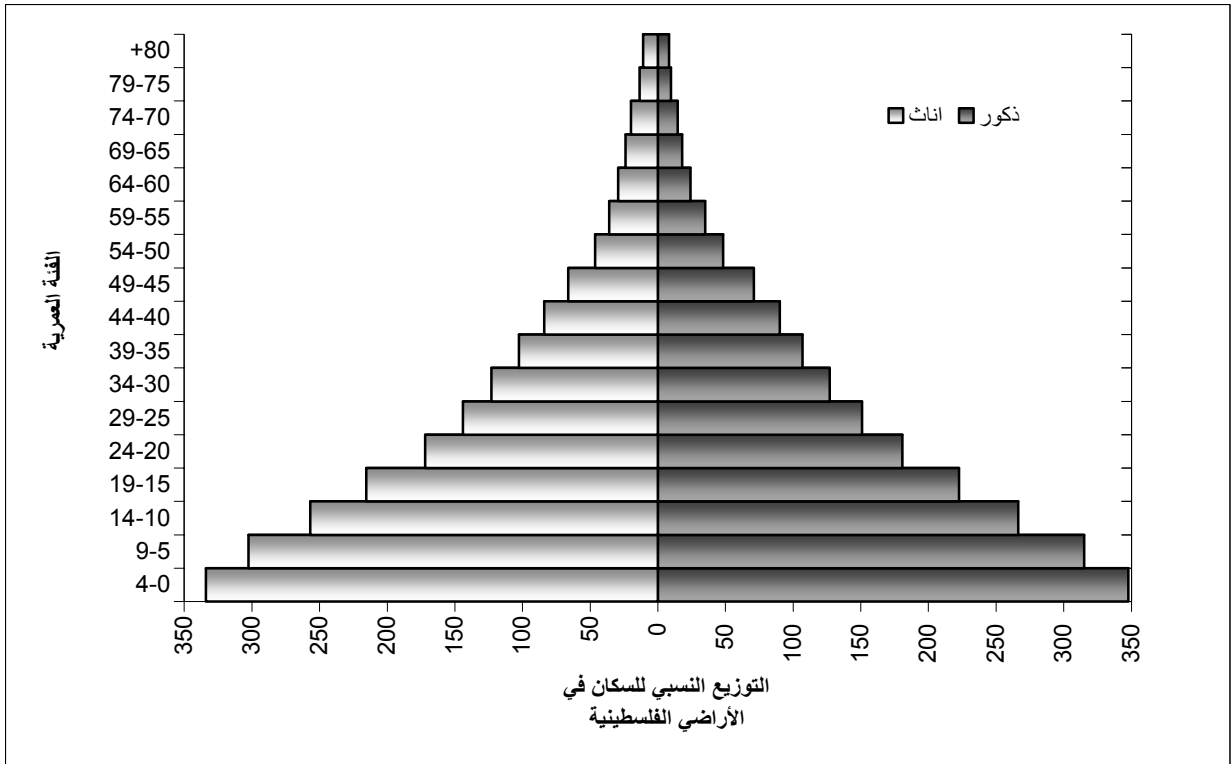
17.0

2007

15.6

2007

:(1-2)



(2005)

2007

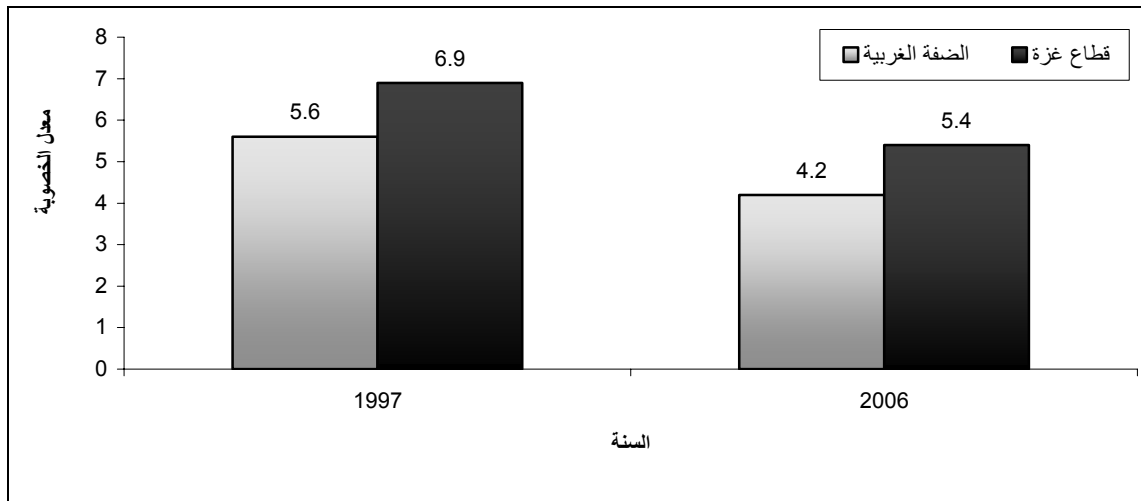
:



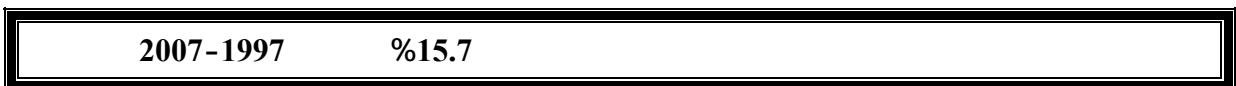
1997-  
 6.9  
 5.6  
 6.0  
 4.2  
 4.6  
 2006  
 5.4  
 2006  
 5.0  
 4.6  
 4.7  
 2.0  
 3.1  
 3.7  
 2006

(2006 1997)

:(2-2)



- .2006  
 - .1997  
 .2007  
 .2007  
 :



2007-1997 %15.7

42.7

2007 36.0 1997  
 2006

32.8

2007

41.3

2004-

20

(49-25)

13

23

(49-25)

6-1

19

(49-25)

:(1-2)

2004

	49-45	44-40	39-35	34-30	29-25	
<b>20</b>	20	20	20	20	19	
<b>20</b>	19	20	21	20	20	
<b>20</b>	21	21	20	19	19	
<b>20</b>	20	20	20	20	20	
<b>20</b>	19	20	21	20	20	
<b>20</b>	21	21	21	20	19	
<b>20</b>	20	20	18	19	17	0
<b>19</b>	18	19	20	19	18	6-1
<b>18</b>	19	19	19	18	17	9-7
<b>20</b>	21	21	20	20	19	12-10
<b>23</b>	26	25	24	23	22	+13

- .2004

.2007

:

:



3.9 1997

1000

4.9

.2007

1000

1997

5.1



4.7

2007

4.0

.2007

3.7 1997

23.4 27.1 )

25.3

44.0

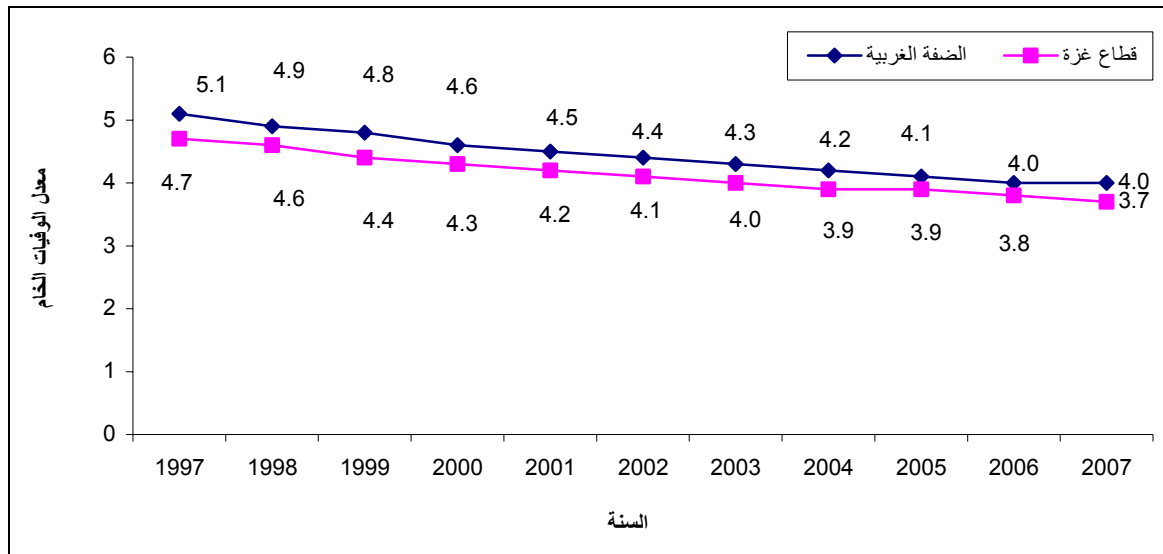
22.0

2003

2006-2002 (

(2007-1997)

:(3-2)



-(2005)

.2007

:



73.3

71.8

2007

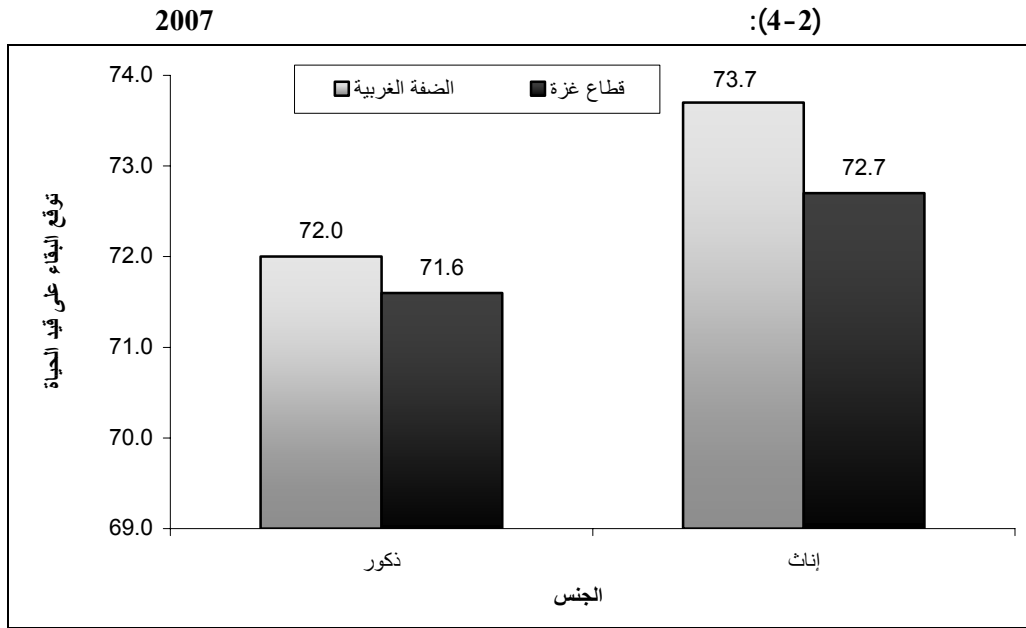
73.7

72.0

2007

72.7

71.6



2007 : (2005 )



1967 1948  
1967  
1991

2004 1995 1997

(%29.1) 1997-  
(%17.2) (1997-1994) (%58.6) (1993-1990)

(%41.4)

(%18.0) 15

65

(%54.8) (40-15)

(%5.7)

(40-15)

:

<b>%34.7</b>	<b>%65.3</b>
--------------	--------------

1997

(%34.7) (%65.3) (%10.5)

(%48.5)

(1993-1990)

(%24.1)

(%46.4) (%53.6)

2006

(24-20)

(%5.3)

(%5.5)

(29-25)

(%5.6)

(%19.3)

(%23.7)

(%40.4)

(%39.7)

(%38.4)

(%16.7)



:



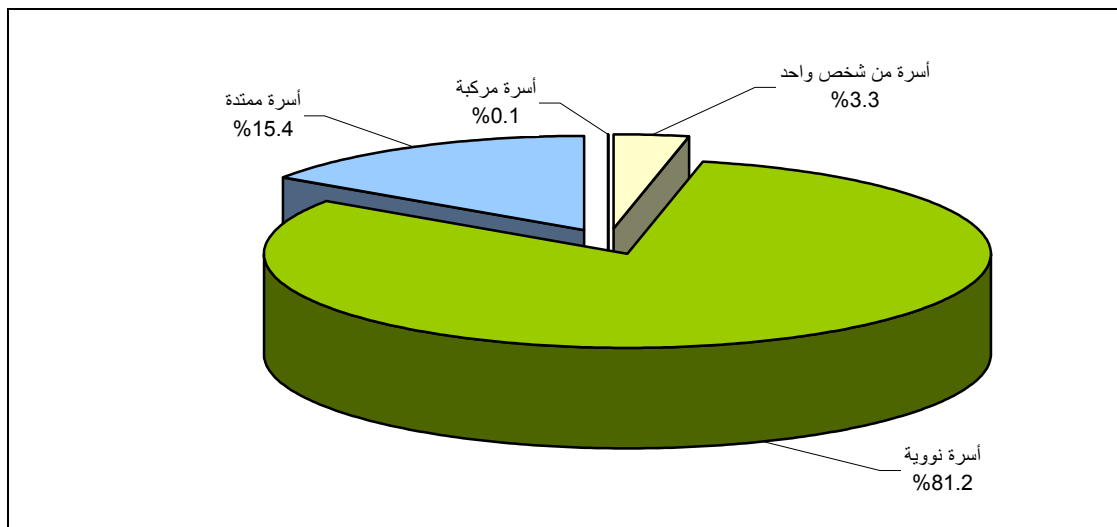
2006  
2006 6.3  
5.7 2006 5.9 2000 6.1  
.2006 2000 6.9 2000



2006  
%81.2  
%77.8 %82.9 .1997 %73.3  
.2006 %15.4  
%0.1 %3.3

2006

:(1-3)



- .2006

.2007

:



2006  
(%8.3) (%8.9) (%7.0)

6.3 3.3 2006

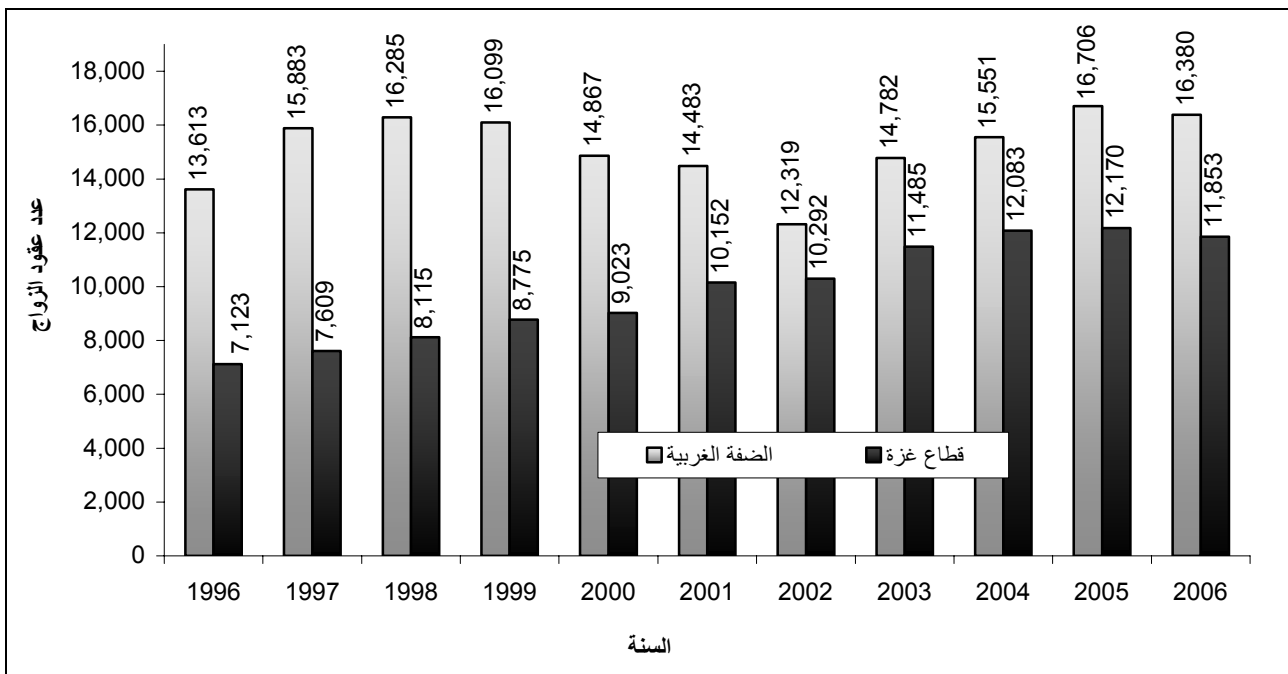
:

2005	2006	%2.05
------	------	-------

2005 2006  
(2005 643 ) 2005 28,876 2005 28,233  
%58.0 ) 16,380 2006  
.2005 326 ( ) 2006 11,853  
( ) 2005 317 (

(2006-1996)

:(2-3)



المصدر: الجهاز المركزي للإحصاء الفلسطيني، 2007. قاعدة بيانات الزواج والطلاق، 2006. رام الله-فلسطين

<b>2006</b>
-------------

	2006	1000	7.3	
7.7	2005	.	8.2	6.7
	.	8.8	7.0	1000

--

24.7		2006			
	.2001	19.0	2005	19.5	2001
		19.6	25.2		24.2
		.2006	19.2	24.0	

--

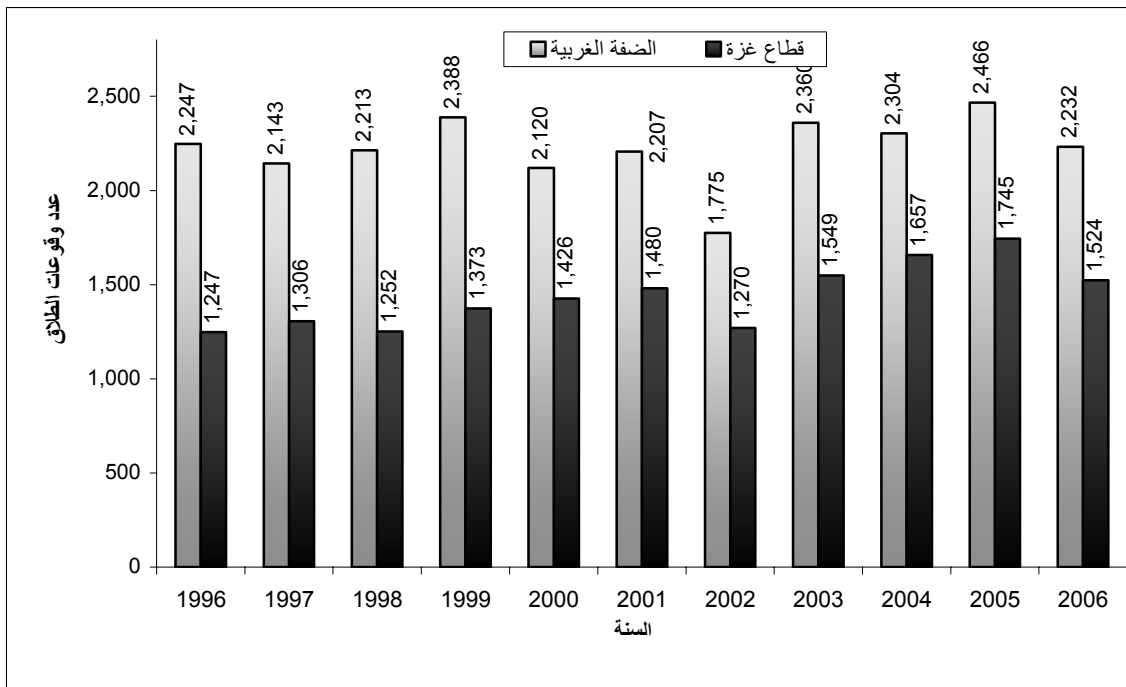
2004				
(%27.5)			(%32.2)	(%24.7)
		(%54.7)		
			(%49.0)	(%58.1)

<b>2005</b>	<b>2006</b>	<b>%10.8</b>
-------------	-------------	--------------

3,756		2006		
	(2005	455	) 2005	4,211
(%59.4)	)	2,232	2006	
2005	(			
1,524				234
(2006				%40.6
		.2005	221	)

(2006-1996)

: (3-3)



- .2006 .2007 :



0.9 2006 1000 1.0  
1.1 2005 1.1  
. 1.3 1.0 1000





(17-5)

:

10	4
----	---

15 ) %41.2  
15 10 2007 - ( 4  
%43.5  
.2006 ( ) %40.0 (2000 - )  
%38.3 %42.7 2007  
67.5 ) %66.7 ( %10.8 %17.5 بواقع %15.2  
890 .( %65.4 %  
291 599

--

.( ) %6.9 %78.4

## 2007

			عمالة تامة			داخل القوى العاملة	
100	21.6	6.9	71.5	100	58.8	41.2	
100	22.2	8.0	69.8	100	33.3	66.7	
100	18.9	2.1	79.0	100	84.8	15.2	
100	17.3	7.5	75.2	100	57.3	42.7	
100	17.8	9.0	73.2	100	32.5	67.5	
100	15.2	1.4	83.4	100	82.5	17.5	
100	30.4	5.8	63.8	100	61.7	38.3	
100	30.5	6.1	63.4	100	34.6	65.4	
100	29.8	4.2	66.0	100	89.2	10.8	

- .2007

.2007

:

:



%21.6 2007

.( %30.4 %17.3 )

. %22.2 %18.9

. 88 104 192

.%8.4

%14.0



( %23.5 )

2007

.( %12.0 )

( %23.2 )

( %32.5 )

( %34.1 )

.( %28.2 )

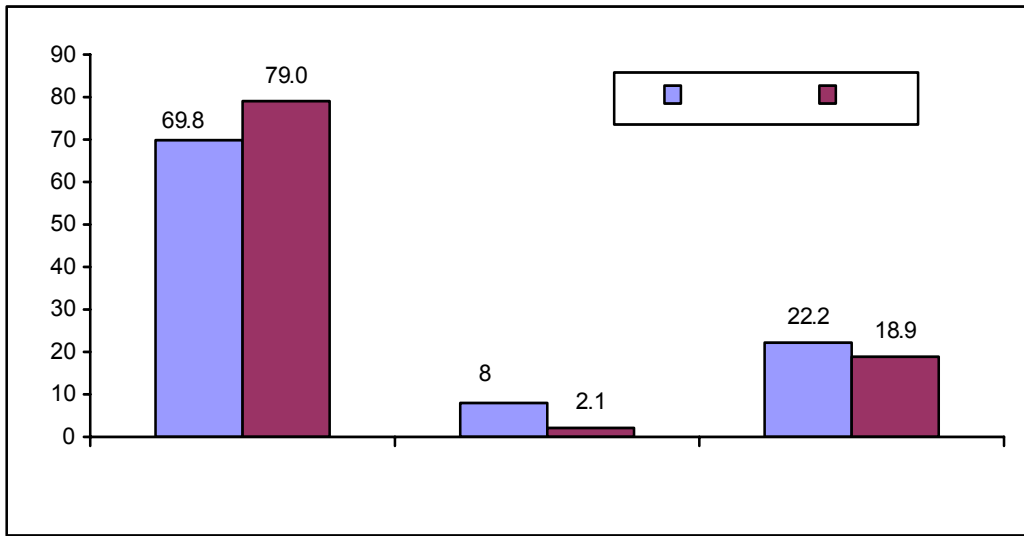
:

<b>698</b>
------------

495	698	2007		( )	
	132		.	203	
			.	29	103
			29	39	
		30	116	146	(2000 )
%65.8		%59.0		%61.0	
%71.0		%66.2		%67.6	
%24.9	2000	%18.1			
					.2007
)					
	%50.5	2007		%36.7	(
				%11.9	%30.9
		.%41.4			
	%21.4				
%16.2					%16.5
				%13.2	
	18				
	60		73		133
		%22.9		2007	
					%17.4
%3.6	2007				
		%10.5	%61.0		%24.9
	%53.9	%91.3			
					%65.8

2007

:(1-4)



.2007

.2007

:

75

74.7 2007

66.9

79.4

128.5

44.6

40.6

41.9

%81.7 2004

%47.7

%43.7

2004

%39.0

%54.5

%24.8

%49.4

.( )

**%61.9**

-

%38.1      2004

%89.3      .(      %51.8      %35.1      )

%97.7      %86.6      )

.(

.(      %3.0      %2.0      ) %2.2

.(      %2.7      %5.4      ) %4.9

%10.7

%33.7      .      %7.1      %11.6      /

%35.0      %4.0

%24.8

23.0

%32.7      %

%46.6      2004      -

%58.4

%33.9

%10.5      /      %10.0

%37.0      %3.2      %8.1

%84.2      %93.3

%82.7      %81.9

%50.7      %44.6

: (17-5)

<b>2004</b>	( 17-5)	<b>40</b>
-------------	---------	-----------

35 2004 ( 17-5) 40  
 %3.8 ( 17-5) %3.1 5  
 %4.6 %2.6 %1.9  
 %1.8

**2004** (17-5) :(2-4)

100	99.7	0.3	100	98.8	1.2	100	99.2	0.8	9-5
100	98.1	1.9	100	95.5	4.5	100	96.5	3.5	14-10
100	94.7	5.3	100	91.6	8.4	100	92.8	7.2	17-15
<b>100</b>	<b>98.1</b>	<b>1.9</b>	<b>100</b>	<b>96.2</b>	<b>3.8</b>	<b>100</b>	<b>96.9</b>	<b>3.1</b>	
100	99.6	0.4	100	98.0	2.0	100	98.6	1.4	9-5
100	96.6	3.4	100	92.5	7.5	100	94.1	5.9	14-10
100	90.2	9.8	100	84.9	15.1	100	86.9	13.1	17-15
<b>100</b>	<b>96.7</b>	<b>3.3</b>	<b>100</b>	<b>93.5</b>	<b>6.5</b>	<b>100</b>	<b>94.7</b>	<b>5.3</b>	
100	99.8	0.2	100	99.7	0.3	100	99.7	0.3	9-5
100	99.6	0.4	100	98.6	1.4	100	99.0	1.0	14-10
100	99.3	0.7	100	98.5	1.5	100	98.8	1.2	17-15
<b>100</b>	<b>99.6</b>	<b>0.4</b>	<b>100</b>	<b>99.0</b>	<b>1.0</b>	<b>100</b>	<b>99.3</b>	<b>0.7</b>	

-2004 .2007





2006

(2007/1/14 - 2006/1/15)

:

( 69)	( 107)
-------	--------

.(%55.0)

( 69) ( 107)

100

72

88

(1998-1996)

.2006 2005 2004 2001

:(1-5)

السنة							مجموعات السلع والخدمات
2006	2005	2004	2001	1998	1997	1996	
6.4	6.5	6.6	6.9	7.0	7.1	6.9	
208	199	193	183	220	223	229	
38	42	35	34	46	50	50	
55	52	53	51	40	41	39	
36	37	32	32	30	33	39	
28	21	29	19	21	23	21	
81	78	69	60	55	62	64	
23	19	18	26	19	20	20	
12	15	13	17	17	16	18	
15	15	13	12	11	12	13	
95	106	80	77	88	99	99	*
<b>591</b>	<b>584</b>	<b>535</b>	<b>511</b>	<b>547</b>	<b>579</b>	<b>592</b>	

\*

- .(2006/1/14-2005/1/15)

.2007

:





:

( 15)
-------

( 15) %7.8 2006

%13.7

%9.6

%17.3

%10.2

%6.1

( 15) :(1-6)

2006

9.4	3.2	<b>6.3</b>	10.7	2.8	<b>6.7</b>	10.2	2.9	<b>6.5</b>	
5.3	6.6	<b>6.0</b>	8.1	7.6	<b>7.9</b>	7.1	7.3	<b>7.2</b>	
14.2	16.4	<b>15.3</b>	17.8	20.1	<b>19.0</b>	16.5	18.8	<b>17.7</b>	
34.9	33.4	<b>34.1</b>	35.0	37.9	<b>36.4</b>	35.1	36.3	<b>35.8</b>	
26.2	24.3	<b>25.2</b>	17.3	17.7	<b>17.5</b>	20.4	20.0	<b>20.2</b>	
4.1	4.7	<b>4.4</b>	4.9	5.3	<b>5.1</b>	4.6	5.1	<b>4.8</b>	
5.9	11.4	<b>8.7</b>	6.2	8.6	<b>7.4</b>	6.1	9.6	<b>7.8</b>	
<b>100</b>	<b>100</b>	<b>100</b>	<b>100</b>	<b>100</b>	<b>100</b>	<b>100</b>	<b>100</b>	<b>100</b>	

- .2006

.2007

:



:

2,337                      2007/2006  
 31,963                      1,085,274

42,294

**2007/2006**

**:(3-6)**

<b>582</b>	<b>1,755</b>	<b>2,337</b>	
357	1,418	<b>1,775</b>	
193	93	<b>286</b>	
32	244	<b>276</b>	
<b>441,930</b>	<b>643,344</b>	<b>1,085,274</b>	
222,383	320,882	<b>543,265</b>	
219,547	322,462	<b>542,009</b>	
<b>10,934</b>	<b>21,029</b>	<b>31,963</b>	
4,636	8,325	<b>12,961</b>	
4,468	8,731	<b>13,199</b>	
1,830	3,973	<b>5,803</b>	
<b>15,320</b>	<b>26,974</b>	<b>42,294</b>	
7,520	11,560	<b>19,079</b>	
7,801	15,414	<b>23,215</b>	

-

-2007/2006

.2007

:



2006

:

<b>%32.8</b>
--------------

	%33.9	%32.8		
	%80.4 (	)		%30.8
			%75.9	%82.7
				%62.7
	%8.4		%17.5	
	%4.0			%7.1
				%0.3
%77.7				
%75.5				
		%38.6	%81.9	
			%34.3	%40.9
	%50.9	(	10)	
	%49.5		%51.8	
				%46.4
				%55.3
		%52.0		
	%7.1		%8.2	%21.0
			%4.6	
		(	10)	%39.7
%39.4		%38.7	%41.5	%38.7
	%10.0		%37.5	





:  
 %53.5 %50.8  
 %81.0 %45.6  
 %78.6 %82.1  
 %41.9 10 %37.7  
 %95.3 %30.1  
 %93.4 %96.3

2006

:(1-7)

30.8	33.9	32.8	
45.6	53.5	50.8	
16.2	15.7	15.9	
78.6	82.1	81.0	
80.2	80.9	80.6	
7.4	12.0	10.4	
75.9	82.7	80.4	
93.4	96.3	95.3	
10.8	24.1	19.6	

.2006

.2007

<b>%32.9</b>	<b>10</b>	<b>%10.0</b>
--------------	-----------	--------------

%30.4 %9.5  
 10 %10.0 %60.1  
 %54.9 %35.1  
 %7.4 %12.6  
 76.2 %19.9 %3.9  
 10 %5.6 %

						%63.8	%30.6
						%6.1	%5.1
%35.5	%31.6			10		%32.9	
		%38.9	%38.7				
	%15.3			10		%60.6	
	%3.1			%8.4			%9.5
					10	%23.8	
(	10)	%6.2				%16.8	%17.3
	%6.0		%5.0			%6.9	
	%7.6		%8.5			%4.6	
%3.9			%10.7			%5.9	
%3.1		%3.7		%4.0			

2006

( 10)

:(2-7)

42.9	46.3	45.1
40.1	34.0	36.2
93.1	95.5	94.6
49.1	45.7	46.9
79.3	68.5	72.4
76.9	57.6	64.5
51.8	42.8	46.0
42.8	51.9	48.6
35.5	32.0	33.2
94.1	96.4	95.6
50.4	47.9	48.8
80.8	70.3	74.1
76.9	58.8	65.2
52.5	44.3	47.2
43.1	40.7	41.5
44.7	36.2	39.2
92.0	94.5	93.6
47.8	43.4	45.0
77.8	66.7	70.7
76.9	56.4	63.7
51.1	41.3	44.8

.2006

.2007



:

:

**%36.0**

:

(%58.0)

(%32.0)

.2005

(%65.0)

2005

:( )

(%32.0)

2005

(%1.0)

(%8.0)

(%29.0)

(%14.0)

.2005

:

1987

2005

(%30.0)

(%36.0)

(%27.0)

(%27.0)

(%17.0)

.2005

(%11.0)

(%31.0)

(%47.0)

.2005

**2005**

**:(1-8)**

421	2,887	24	
53	63	1	
171	1,492	27	
—	565	24	
<b>645</b>	<b>5,007</b>	<b>76</b>	

:-

- .2005

**.2007**

.2004

.2005

:

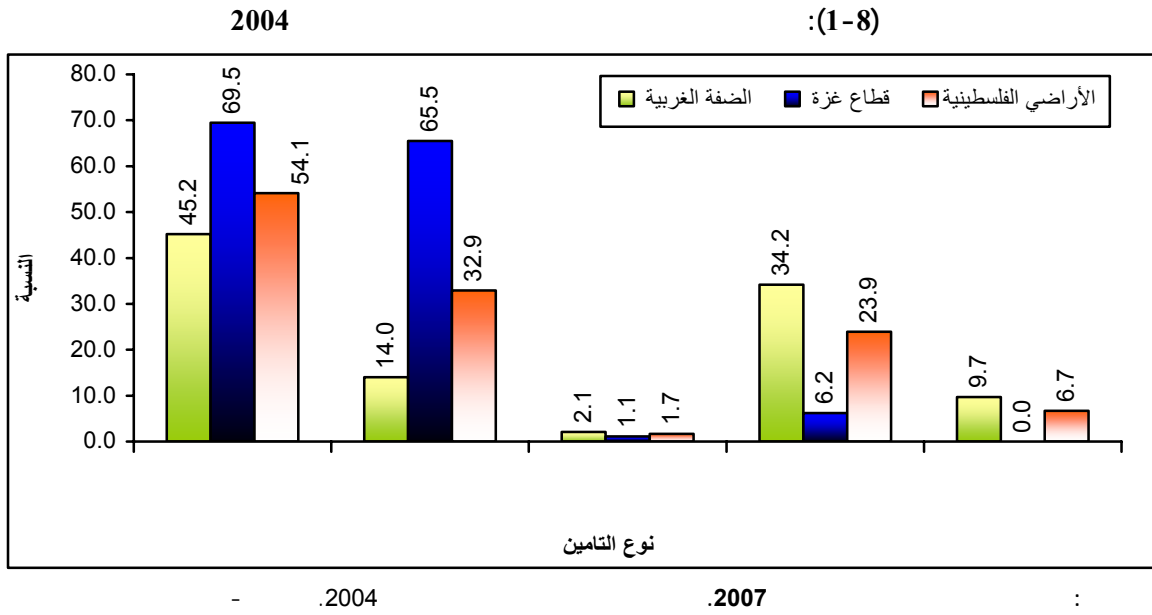
:

2006

2004 -

:

•



5

.2004

10

(%18.3) 2006

.(%7.0)

(%38.4)

.(%0.5)

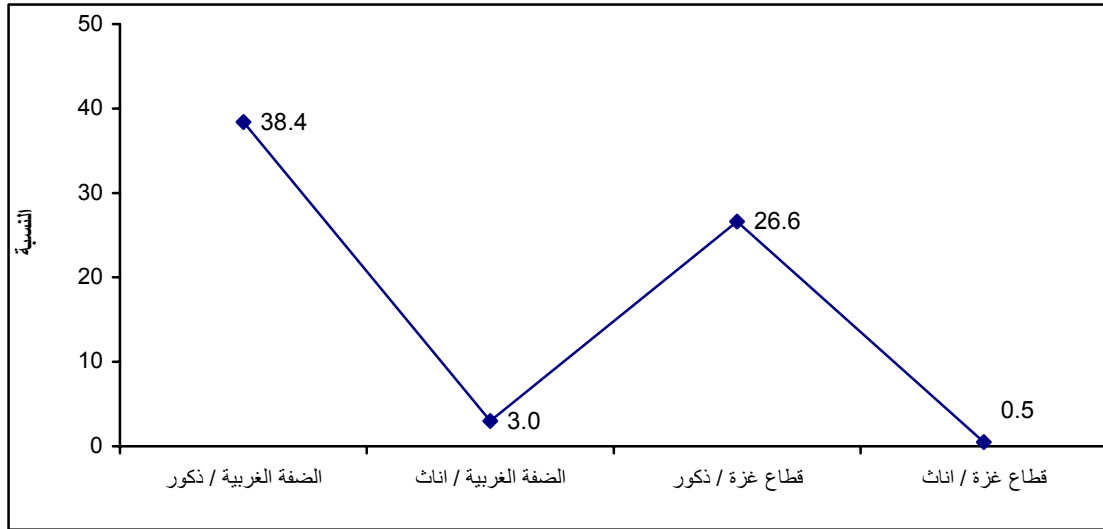
(%3.0)



2006

( 10 )

:(2-8)



-

2006

.2007

:

(%90.2)

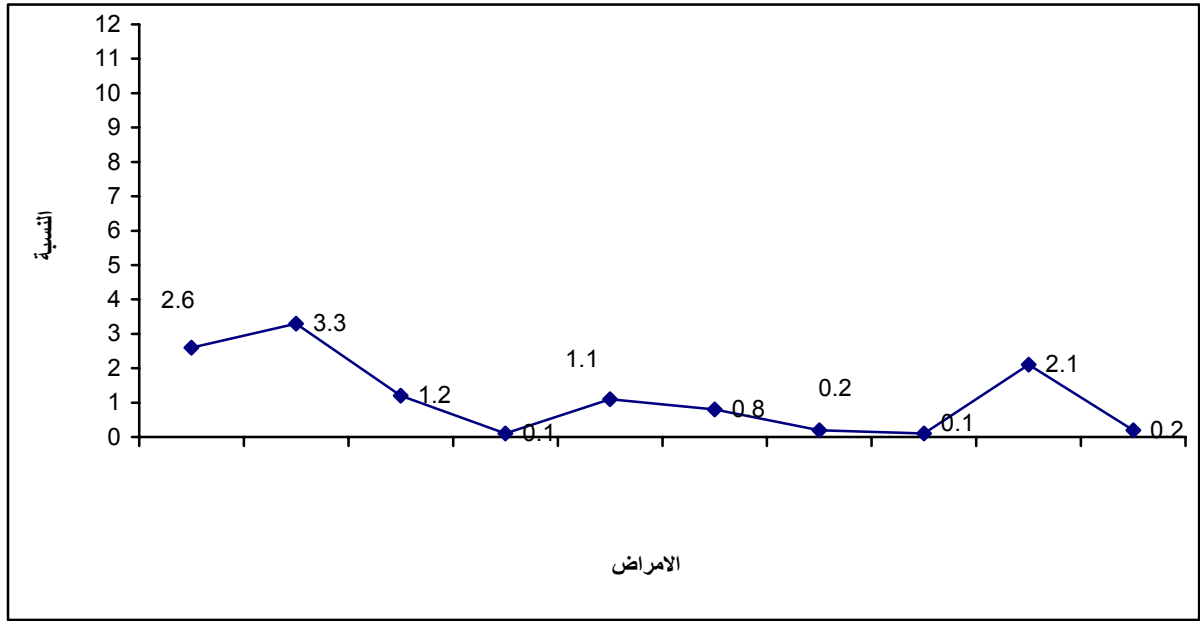
2006

:

(%9.8)

2006

:(3-8)



2006

2007

(%7.9)

(%11.7)

2006

(%2.1)

(%2.7)

(%2.5)

(%47.7)

(%22.4)

(%27.2)

:

.2006

:

•

(%98.8) 2006

:

•

2006 (%96.6)

(%53.7)

.(%3.2)

(%24.9)

:

•

(2006-2002)

(%30.0)

(%29.7)

.(%30.5)

:

•

( )

(%26.5)

2006

(%27.2)

(%25.9)

(5-0)

.(%24.9) (%28.0)

: •

(%10.2) ( )  
(%2.9) ( )  
(%1.4) ( )

.2006

.( %7.9 %13.2 )



:



2006 (%81.5) %89.0 %77.7  
 .( %6.8 %13.9 ) %11.5  
 18.7) . 1.8  
 .( 3) (%)

**2006**

**:(1-9)**

100	7.0	11.5	81.5		
100	8.4	13.9	77.7		
100	4.2	6.8	89.0		

- .2006 : .2006 :

:



(%40.8) (%55.6)  
 (%48.0) (%59.4)

**2006**

**:(2-9)**

<b>100</b>	0.4	1.6	40.8	55.6	1.6	
<b>100</b>	0.4	1.7	36.5	59.4	2.0	
<b>100</b>	0.4	1.2	49.4	48.0	1.0	

- .2006 : .2006 :



2006 (%56.9)

(%36.0)

(%97.8)

(%0.4)

(%24.6)

:



2006 (%90.8)

(%88.4 %95.6 )

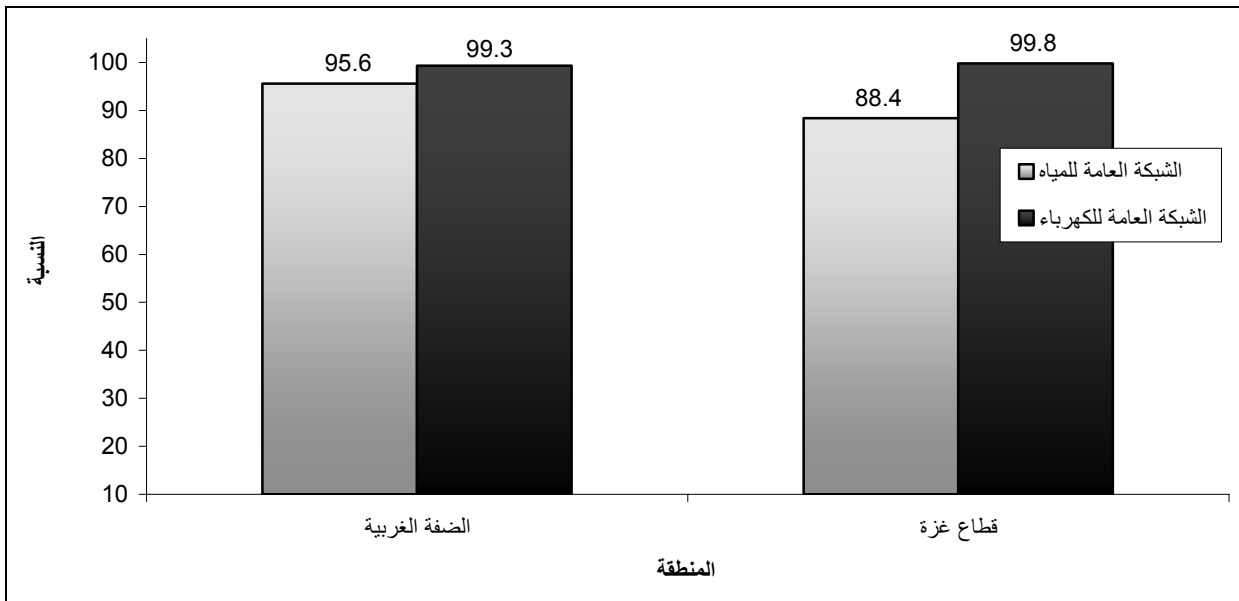
(2006 )

%99.5

(%99.8 %99.3 )

2006

: (1-9)



- .2006

:

.2006

:

- .(2006 )

.2006

:



(%54.0)

2006

(%33.7)

(%64.5)

(%45.3) .  
 .( %66.0 %34.7)

:



2006  
 (92.3%) .  
 ( %89.9) (%98.3)

**2006**

**:(3-9)**

9.4	22.8	18.2	
89.3	93.9	92.3	
72.1	70.3	70.9	
98.4	98.2	98.3	
88.0	90.9	89.9	
0.4	3.0	2.1	

- .2006 : .2006 :





		<b>.2007</b>		•
			– .2005	
– .2004		<b>.2007</b>		•
	2006	<b>.2007</b>		•
			–	
	– .2006	<b>.2007</b>		•
.2007		<b>.2007</b>		•
			–	
/1/14-2005/1/15)		<b>.2007</b>		•
			– .(2006	
		<b>.2007</b>		•
			– .2006	
	.2005	<b>.2007</b>		•
			–	
		<b>.2007</b>		•
	– .2005	<b>.2007</b>		•
–2007/2006		<b>.2007</b>		•
			–	
.2006		<b>.2007</b>		•
			–	
	– .2005	<b>.2007</b>		•
	– .2006	<b>.2007</b>		•
– .(2006 )		<b>.2006</b>	:	•
			–	
	.2004		<b>.2005</b>	•