



### **Palestinian Producer Price Index, Increase in the PPI during April 2012**

The overall Producer Price<sup>1</sup> Index (PPI) for the Palestinian Territory with its base month (January 2011=100) reached 100.66 in April 2012, it increased by 1.30% compared to March 2012.

Producer Price Index for exported products (January 2011=100) reached 104.77 in April 2012, which indicates an increase by 2.56% compared to March 2012.

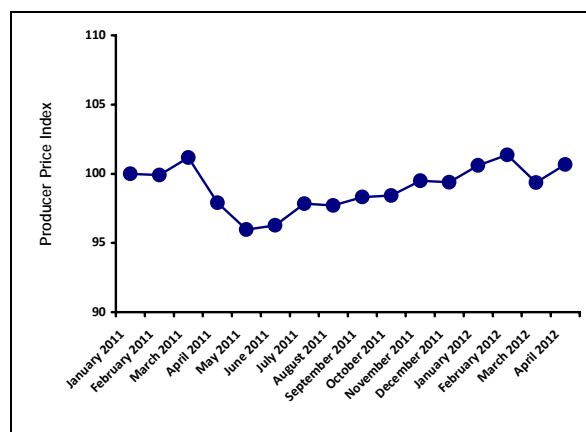
Producer Price Index for locally consumed products (January 2011=100) reached 100.25 in April 2012, which indicates an increase by 1.17% compared to March 2012.

The changes of Producer Price Index for April 2012 is traced back to changes in prices of following major activities compared to the previous month:

<b>Major Groups</b>	<b>%Change</b>
Agriculture goods:	+ 1.91%
Fishing:	+ 23.61%
Mining and quarrying:	0.00%
Manufacturing group:	+ 0.95%

<sup>1</sup> The producer's price is the amount receivable by the producer from the purchaser for a unit of a good or service produced as output minus any VAT, or similar deductible tax, invoiced to the purchaser. The producer's prices exclude any transport charges invoiced separately by the producer.

### **The trend line for the Producer Price Index in the Palestinian Territory, for the period: January 2011 - April 2012 (Base Month January 2011=100)**



**For more information, please contact:  
Palestinian Central Bureau of Statistics  
Ramallah, Palestine.**  
Tel: (972/970) 2 2982700  
Fax: (972/970) 2 2982710  
Toll free.: 1800300300  
E-Mail [diwan@pcbs.gov.ps](mailto:diwan@pcbs.gov.ps)  
Web-Site: <http://www.pcbs.gov.ps>