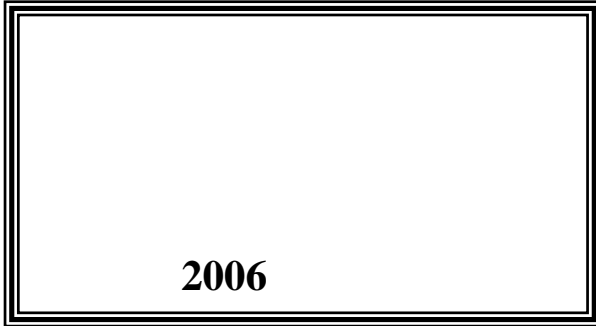


(2)



2006



© 1431 - 2010.

:

(2).

2010.

:

1647 . . -

: 2700 298 (970/972)

: 2710 298 (970/972)

: 1800300300

: diwan@pcbs.gov.ps

: http://www.pcbs.gov.ps

(2)

(PNA)

2010 (CFG)

.(SDC)

(CFG)

•

•

•

•

•

•

•

(2)

2010

.

:

(-)

(0)

(.)

(..)

(:)

25		:
29		:
29	1.2	
29	2.2	
29	3.2	
32	4.2	
32	5.2	
32	6.2	
32	7.2	
33	8.2	
37		:
37	1.3	
37	1.1.3	
38	2.1.3	
41	3.1.3	
45	4.1.3	
47	2.3	
47	1.2.3	
48	2.2.3	
49	3.2.3	
53	4.2.3	

53

3.3

53

1.3.3

54

2.3.3

57

59	2010-1997			:1
60	2007			:2
60			2010-	:3
61		2007		:4
64			2007	:5
66	2009			:6
67				:7
67			2009-1998	:8
68			2009	:9
68		2009		:10
69			2009-1998	:11
69			2009	:12
69			2009	:13
70			(15)	:14
71			2009-2004	:15
72			2009/2008-2008/2007	:16
			2009/2008-2008/2007	

73				:17
			2009/2008-2004/2003	
73				:18
			2009/2008-2004/2003	
74		(15)		:19
			2009	
74		(15)		:20
			2009-2006	
75			2009	:21
75			2009	:22
75	2009-2004		1000	:23
76				:24
			2009-2004	
76				:25
			2009-2004	
76				:26
76				:27
			2008/2007	
77				:28
			2008/2007	
77				:29
			2008/2007	
77		2008/2007		:30
78				:31
			2007 1997	
78	2007			:32
78	2009			:33
79	2009			:34
79		2009 2008		:35

80				:36
			2008 2003	
80				:37
			2008	
81				:38
			2008 2003	
81				:39
			2008 2003	
82				:40
82				:41
			2009	
83	()	:42
		2009		
86	()	:43
		2009		
87				:44
			2008-2004	-

37	2010-1997	:1
38		:2
	2009-1998	
38		:3
	2009-2004	
41	(15)	:4
	2009	
41	(15)	:5
	2009-2004	
46	2009/2008	:6
46	2009/2008	:7
47		:8
	2008/2007	
48	2008/2007 ()	:9
48	2007 1997	:10
49	2009	:11
49	2009	:12
53	2008	:13
54	2009	:14

39	2007		:1
		(15)	:2
43		2009	
51	2007		:3

	306,185	600,364	2010	:	•
	%17.9			294,179	
				.2007	
	4,979	2009			•
			533		
		19,053	2009		•
				1,268	
0.8	465		8	2009	•
		2009	(15)	1000	•
%47.3					
	.%22.5				
163	456		2009/2008		•
			.2008	² 997	•
	184,659		2008/2007		•
	7,617		131,249	57,387	
			25,522	14,715	
		.2007	87,645		•
1,082		2009			•
				484.0	
	42	50			•
	18	74			
				.2008	
			21,530	2009	•
649.7		2007-2004	2008		•
176.8		2007-2004	2008		•
		473.0	2008		•

:

.1

5

11

:

:

•

:

•

.2

•

•

•

.3

2009

.4

:

	:			
	:2009/2008-1999/1998			.1
)	(
	:			.2
1995	:			
	906	7,563		
	:2009	2008		.3
	:			
	:1997			.4
		1967		
1967				
	:			
	:2004			.5
		1994		
	:			
	:2007			.6
2007				
	2007			
		(2007/12/1-11/30)		
2008/6/26-2008/6/01	:2008			.7
	.2008			.8

2007

:2008/2007

.9

2008/2007

.10

(1)

1.2

940

(1)

2.2

() ()
()

() 5500

()
()

3500

()
()

1168

(2)

3.2

()

1805

3500

" "

500

(3)

(565-527)

614

(1087-638)

(785-774)

484

1187

. 1099

1168

1172

. 1260

.(1516-1260)

) (662)

(

22

- - - -

. 1917

1517

1840-1831

1922 . 1948-1917
1929
1930
. 1936
1948
1948/12/1 1947
1967 8 1950
1967
1948
1948
1967 1948
()
() 4 () 1981
72,700
26 1987 34 1981
25
1994
1967

(4) **4.2**

:
:

(5) **5.2**

%17.6 2008 2 997

(6) **6.2**

) 92

()

()

()

()

.(

7.2

.2007 -1838

10,000	(7)1838
16,577	(7)1922
17,531	(7)1931
24,560	(7)1945
35,983	(7)1952
37,868	(7)1961
38,091	(7)1967
60,000	(7)1985
119,401	(8)1997
159,038	(9)2007

2007	1838	16			
1922	16,577		1838	10,000	
24,560	1945	1931	17,531		%2.6
		.2007	159,038		
				(7)	8.2
		:			
				:	
		2007/2006	338,400		
					%30.2
				:	
		1978			
				:	
				:	
			1948		

		.1
	.(http://ajwad1980.jeeran.com/%D8%A7%D9%84%D8%AE%D9%84%D9%8A%D9%84.doc)	
	.(http://hebron2000.tripod.com/gothor.htm)	.2
	.(5) " "	.3
	.(http://forum.maktoob.com/t913246.html)	.4
.2007	.2008	.5
	.	-
.	- .2007 .2007	.6
	.(http://www.nazweb.jeeran.com/cities/westbank/hebron.htm)	.7
:1997-	.2000	.8
	.	-
) - - .2009	.9
	.	- (

1.3

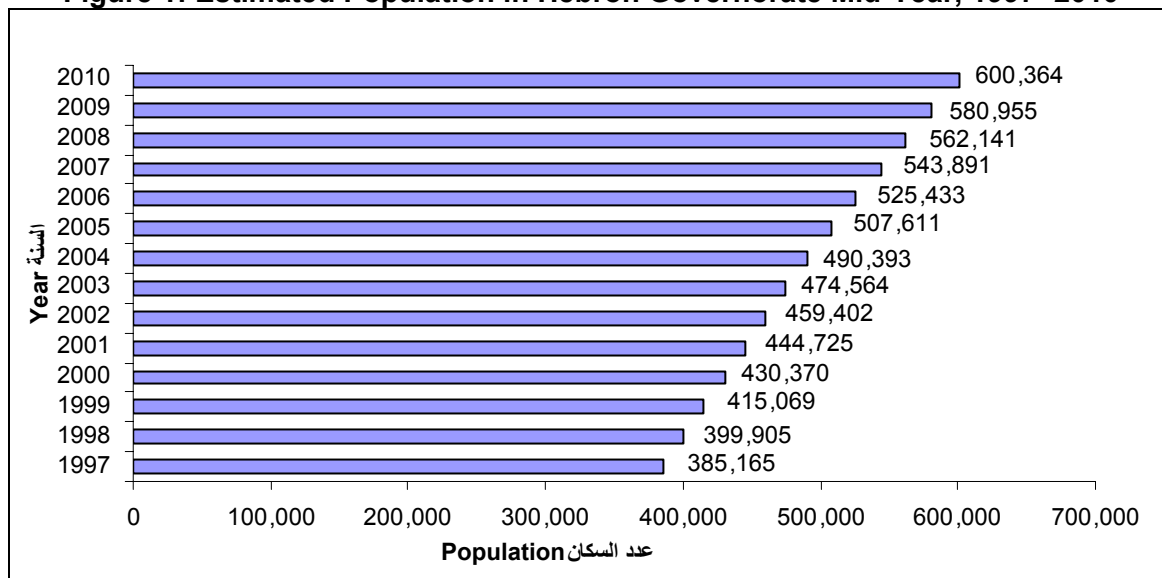
1.1.3

294,179 306,185 600,364 2010
 .1997 %55.9
 2007 %17.9
 .2007 %27.4
 .² / 582.7 2009

2010-1997

:1

Figure 1: Estimated Population in Hebron Governorate Mid-Year, 1997- 2010



:

4,979 2009 :
 19,821 %25.1
 . 19.6 24.5

:

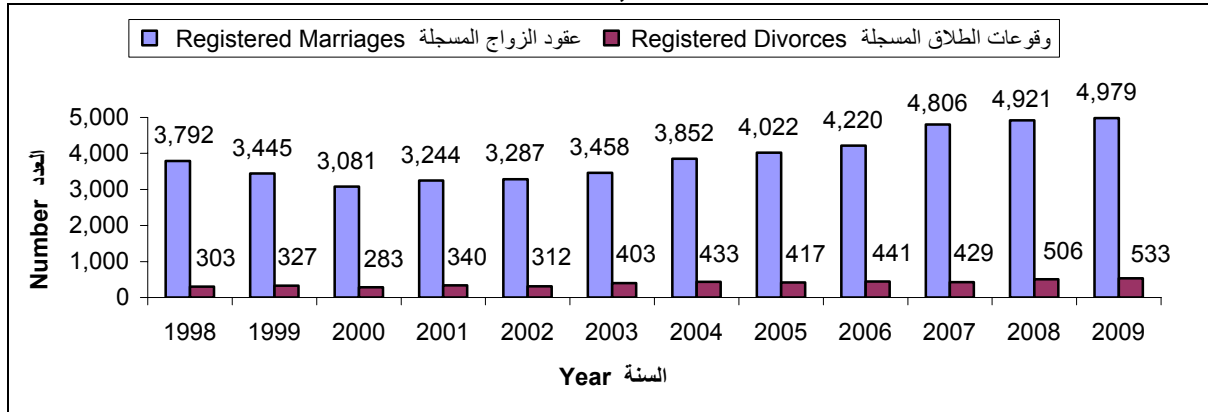
533 2009 :
 146 165 20 23
 152 171 24-20
 64 85 29-25

39-35 62 54 34-30 28
30 86
232

2009-1998

:2

Figure 2: Registered Marriages and Divorces in Shariah and Church Courts in Hebron Governorate, 1998-2009



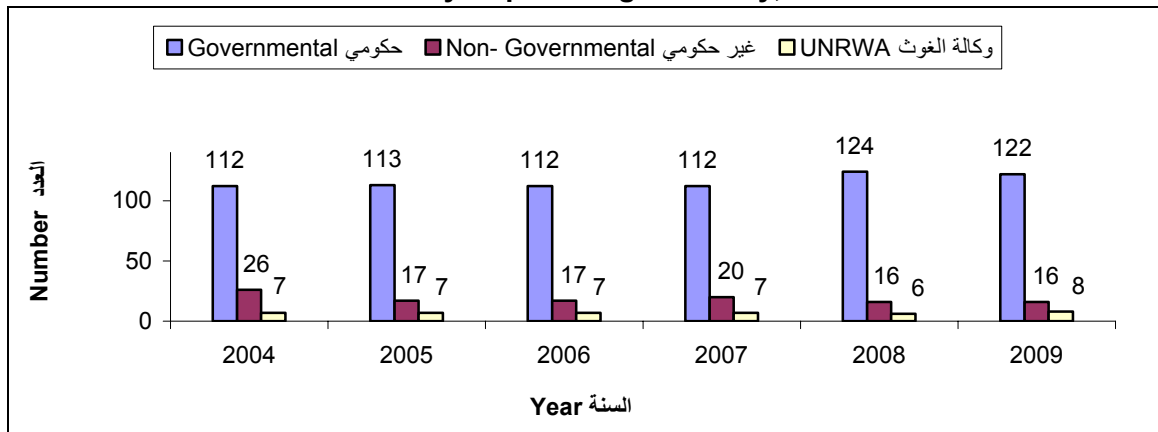
9,382 9,671) 19,053 2009
1,268 . %30.4 ()
577 691 %21.2

2.1.3

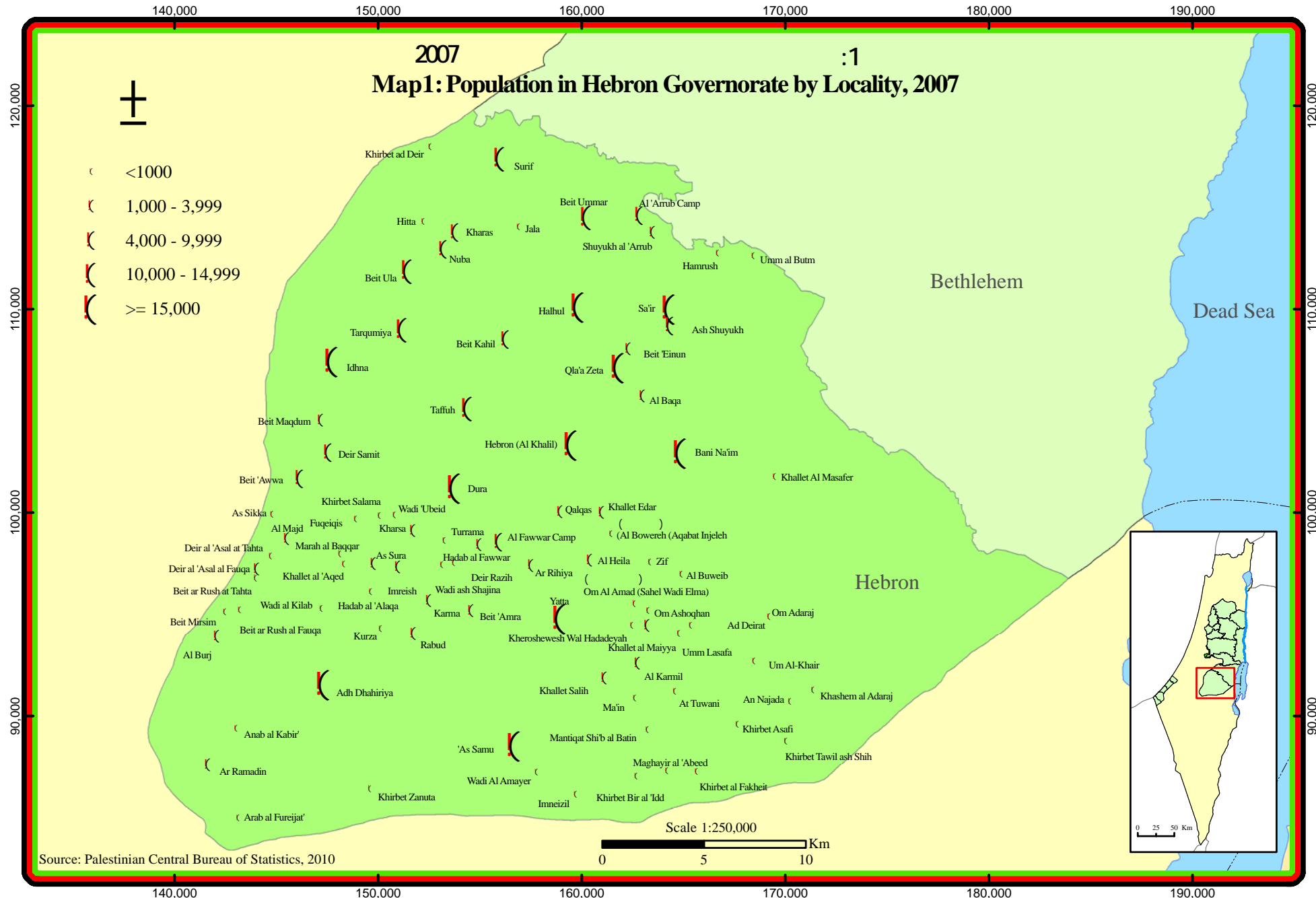
2009-2004

:3

Figure 3: Distribution of Primary Health Care Clinics and Centers in Hebron Governorate by Supervising Authority, 2004-2009

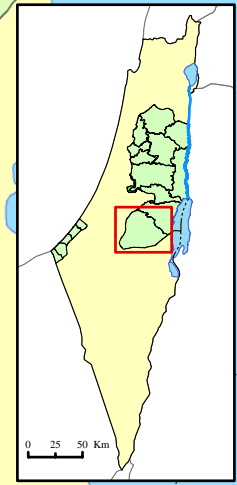
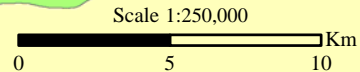


2007 :1
Map1: Population in Hebron Governorate by Locality, 2007



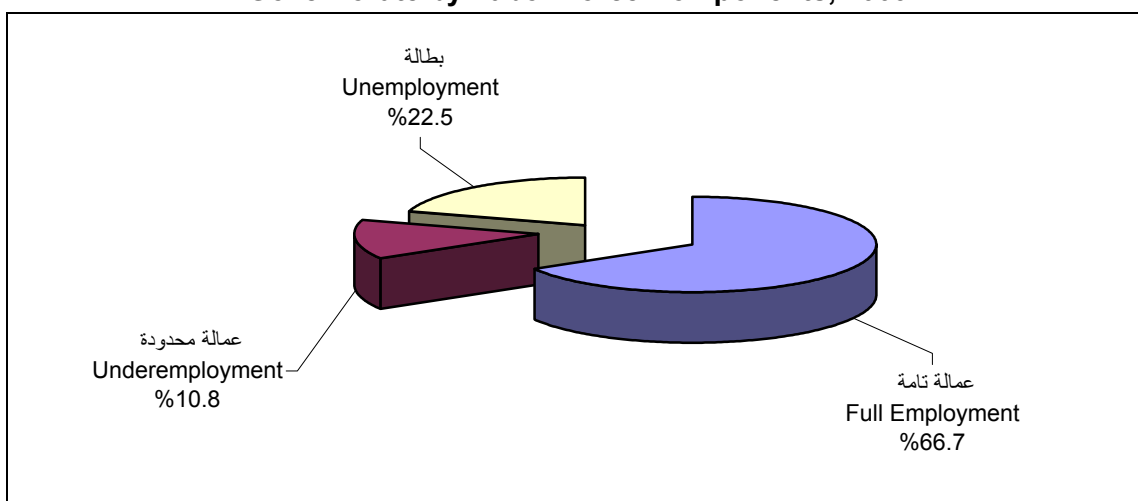
- (<1000
- (1,000 - 3,999
- (4,000 - 9,999
- (10,000 - 14,999
- (>= 15,000

Source: Palestinian Central Bureau of Statistics, 2010

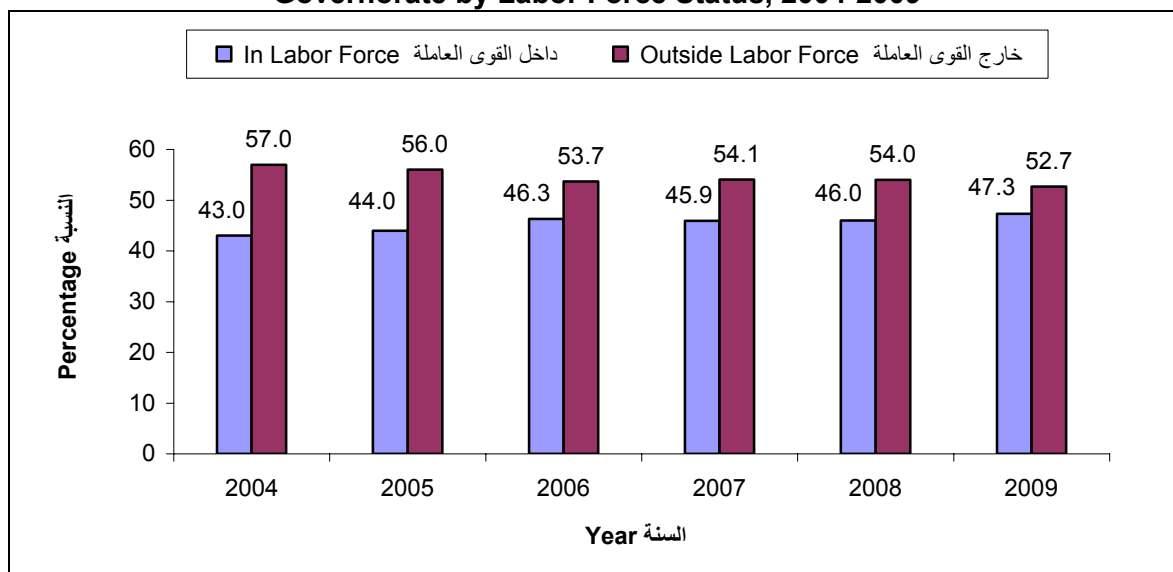


15) 2009
 %47.3 ()
 %73.3 %19.3
 %10.8 %77.5
 %22.5
 %23.4 %18.9

2009 (15) :4
Figure 4: Percentage Distribution of Population (15 years and over) in Hebron Governorate by Labor Force Components, 2009



2009-2004 (15) :5
Figure 5: Percentage Distribution of Population (15 years and over) in Hebron Governorate by Labor Force Status, 2004-2009



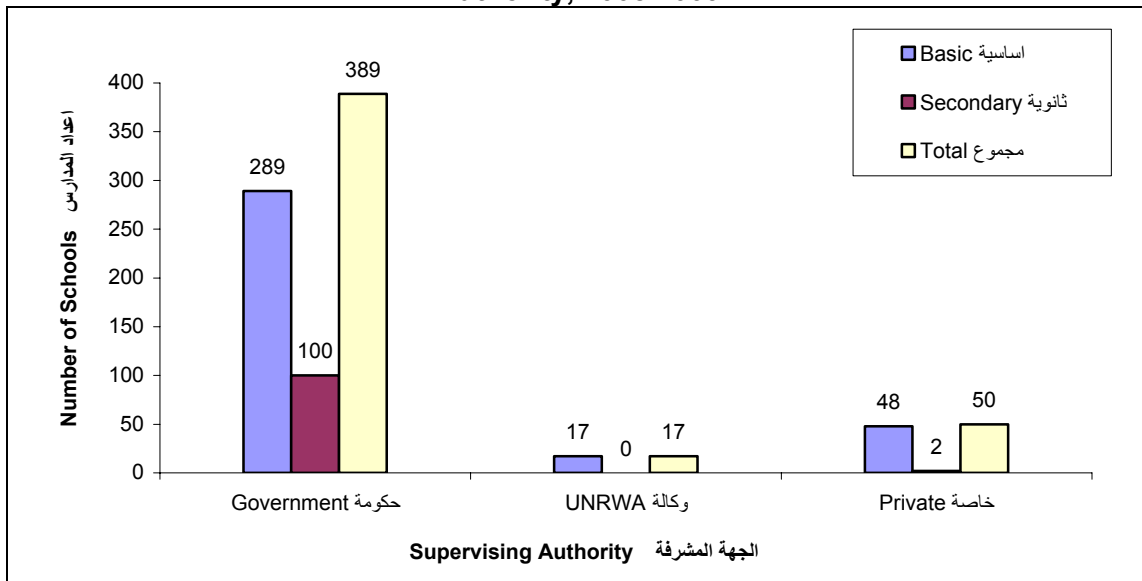
4.1.3

	2009	2008	2009/2008		
	389	456			
	50 ()	17 (100	289)
			1,848	(48)
				671	163
		172,682			
3,602		76,032	86,942	85,740	2009/2008
7,100		76,651		6,106	
31.5		23.6		3,191	
		.	29.5		
	2009	(15)		
	.%16.1			%8.0	
	%8.5	()		
%19.7	%12.7				.%7.4
%10.6	%4.0	(15)	%7.2	.

2009/2008

:6

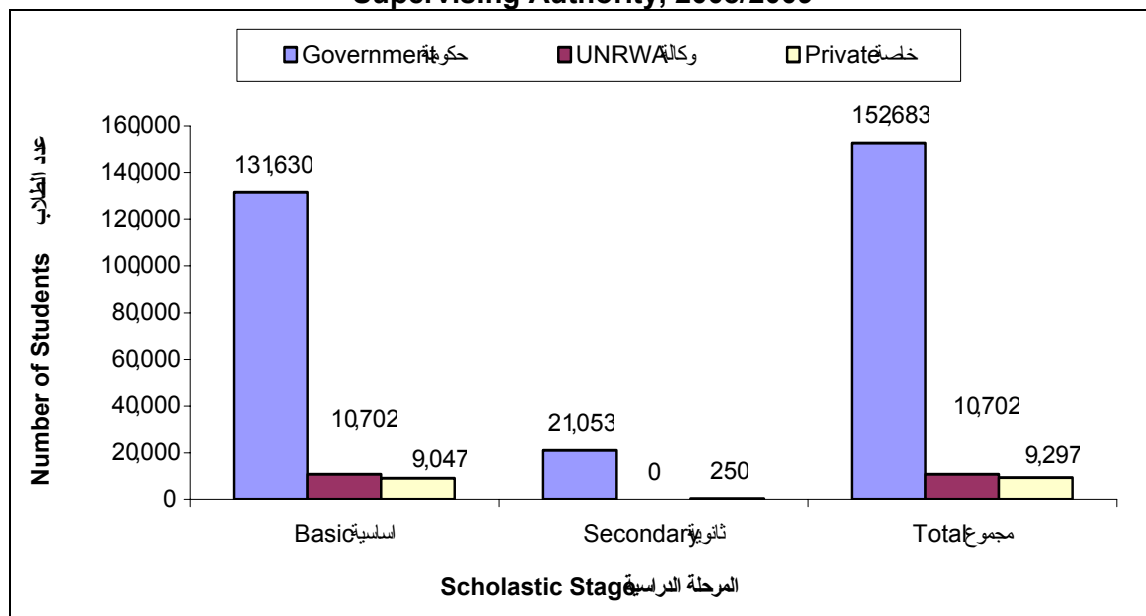
Figure 6: Number of Schools in Hebron Governorate by Stage and Supervising Authority, 2008/2009



2009/2008

:7

Figure 7: Number of Students in Schools in Hebron Governorate by Stage and Supervising Authority, 2008/2009



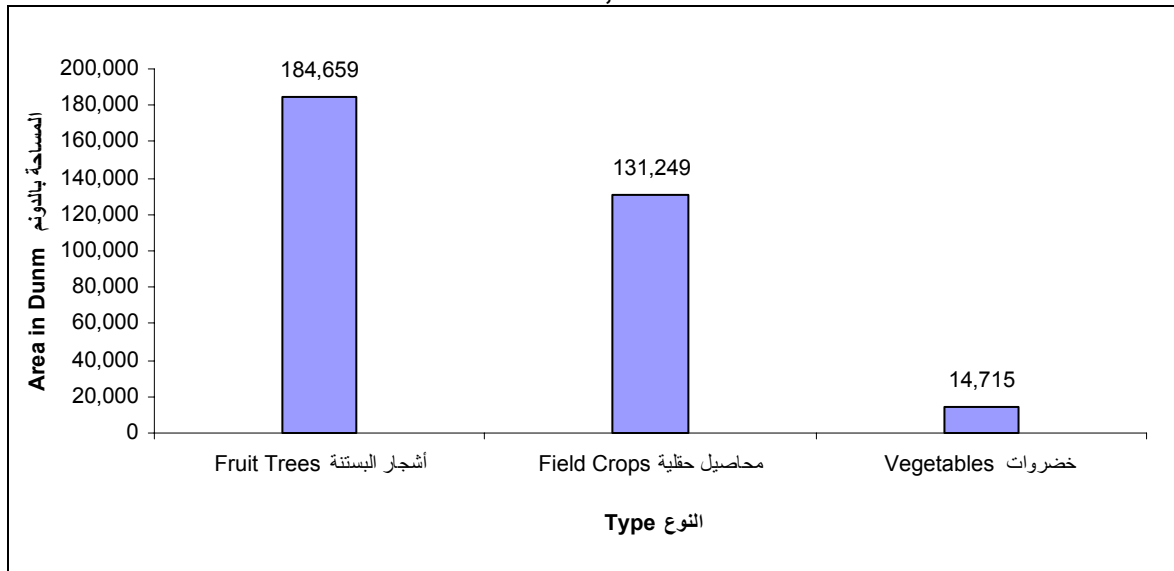
2.3

1.2.3

257.6	2008	997
360.0	13.0	9.0
233,378	2008/2007	
184,659		121,748
7,617	131,249	57,387
	25,522	14,715

2008/2007 :8

Figure 8: Cultivated Areas of Field Crops, Fruit Trees and Vegetables in Hebron Governorate, 2007/2008

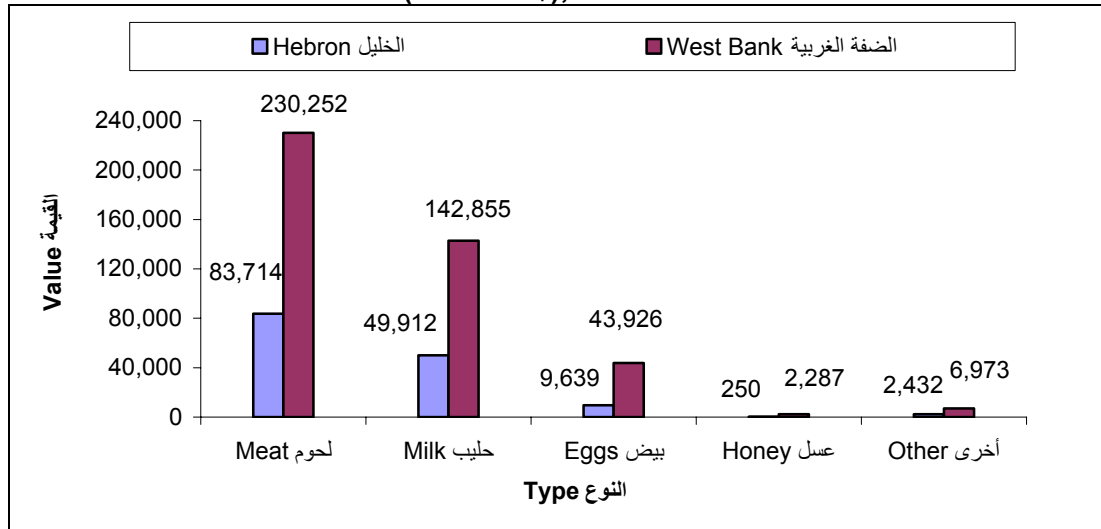


190,316	11,656	2008/2007	95,460
8.2		6,356	
83.7	49.9	0.3	9.6

2008/2007 ()

:9

Figure 9: Value of Livestock Production in Hebron Governorate, and the West Bank (1000 US \$), 2007/2008



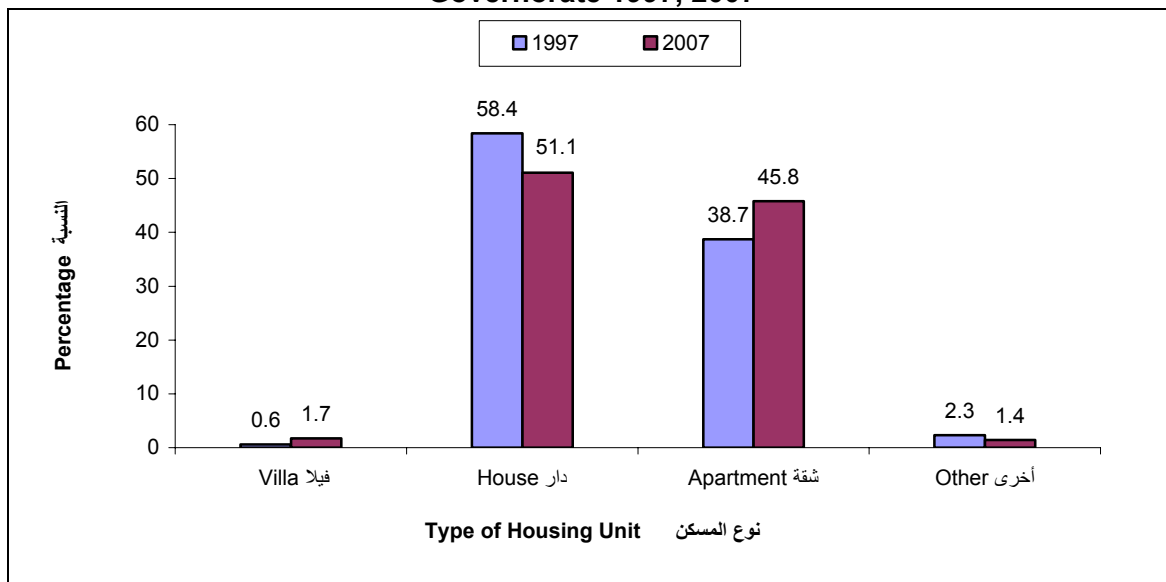
2.2.3

92 87,645 2007
 1997 2007 %51.1
 %45.8 2007 %58.4
 %84.0 1997 %38.7

2007 1997

:10

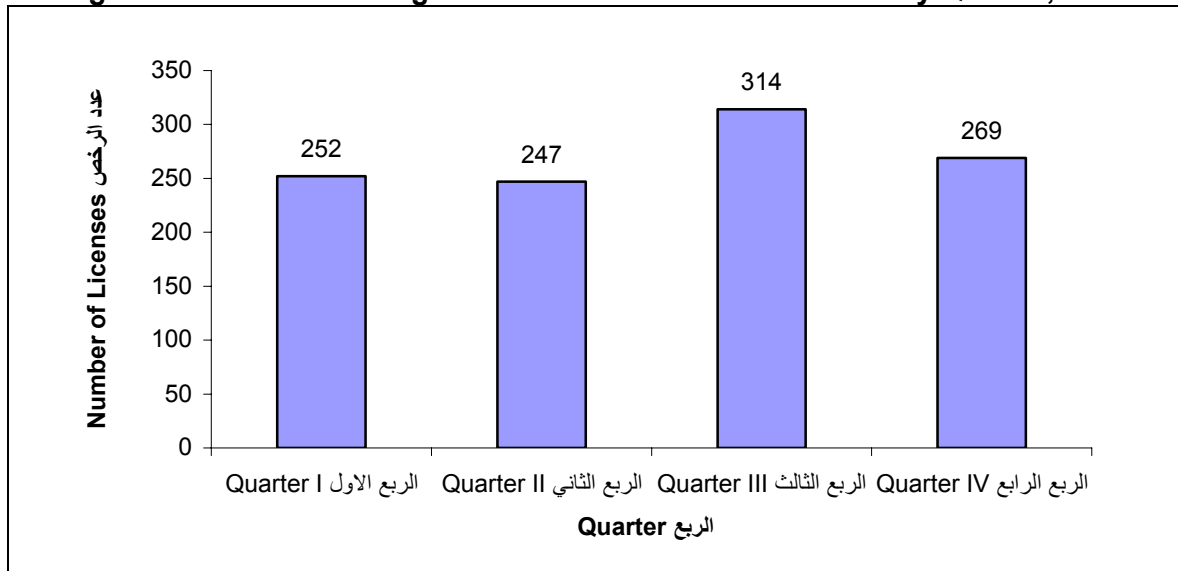
Figure 10: Percentage distribution of Households by type of housing Unit in Hebron Governorate 1997, 2007



1,082 2009
 235.1 228.9 484.0
 840 2008
 175.8 219.7 395.5
 .%28.8 2009 2008

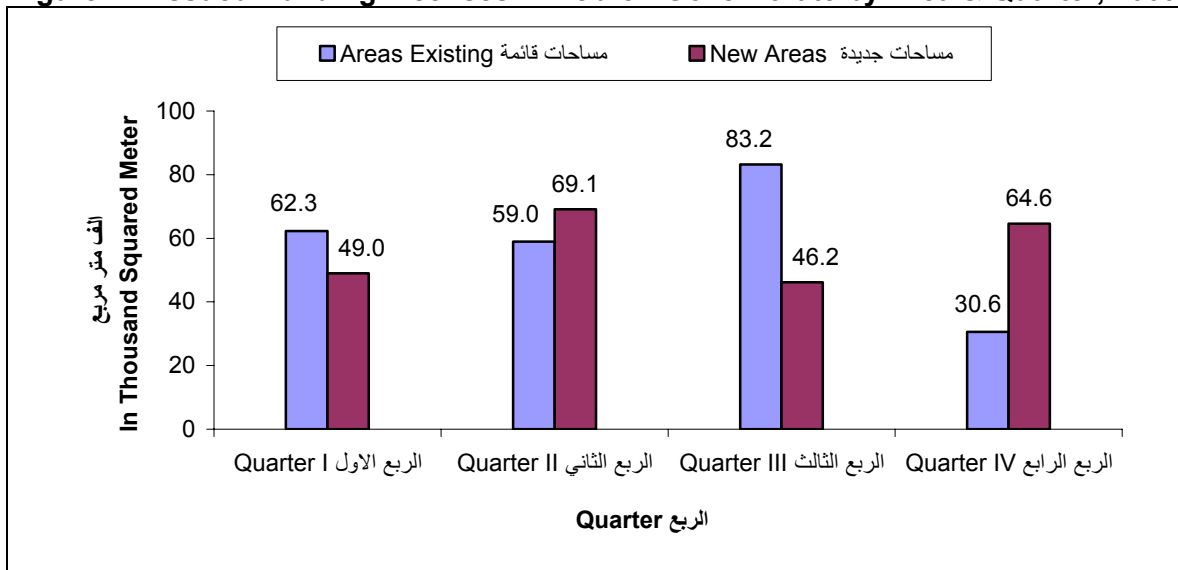
2009 :11

Figure 11: Issued Building Licenses in Hebron Governorate by Quarter, 2009



2009 :12

Figure 12: Issued Building Licenses in Hebron Governorate by Area & Quarter, 2009

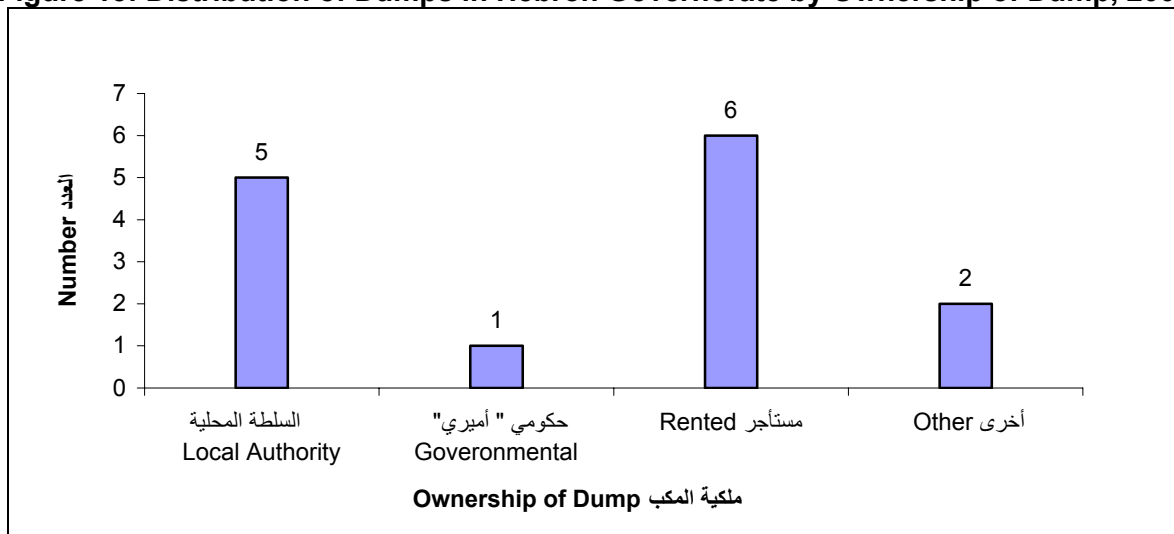


4.2.3

41 2008
3
5
43
11 14 19
44 5
4

2008 :13

Figure 13: Distribution of Dumps in Hebron Governorate by Ownership of Dump, 2008



28
3 5 () 11
.2008 42 3
59
8 3 .2008 18

3.3

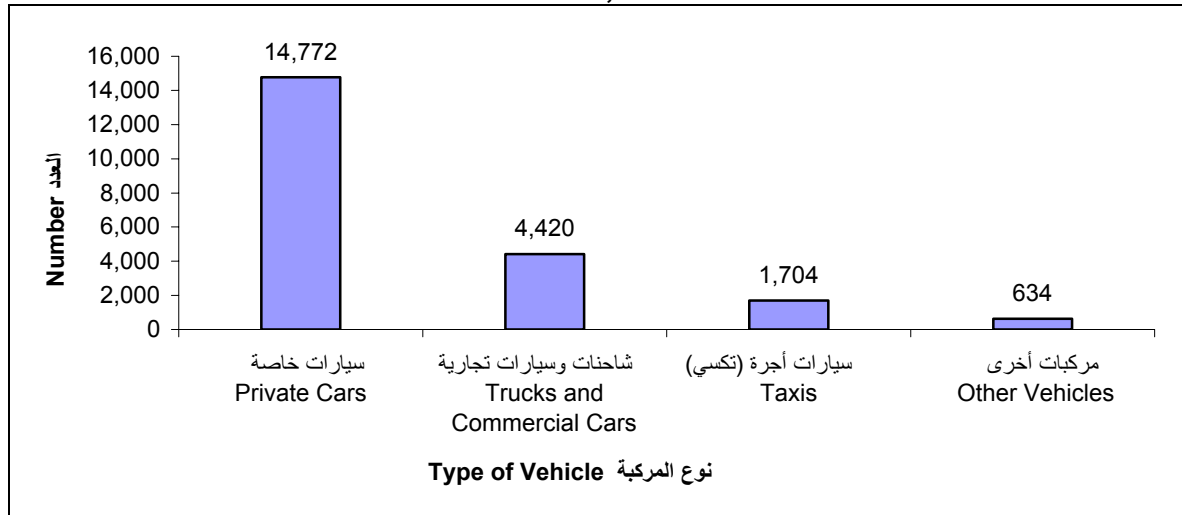
1.3.3

%17.4 2009 21,530
%68.6
%3.0 %7.9 () %20.5

%16.6 2,544
 %64.0
 %18.8 ()
 %2.2 %15.0

2009 :14

Figure 14: Number of Licensed Road Vehicles in Hebron Governorates by Type of Vehicle, 2009



2.3.3

2007-2004 2008
 :
 .2008 649.7
 %37.1 241.2
 %17.3 112.1
 5.5
 %0.8
 :
 176.8 2007-2004 2008
 %56.5 99.8
 %22.6 39.9
 %0.02 34.1
 :
 .2008 473.0

		.2010		.1
		-	.2007	
:2007		.2009		.2
		-		
:2007		.2008		.3
		.()	
2007 -		.2010		.4
			- .2009/12/31	
	- .2009	.2010		.5
.2007		.2008		.6
			-	
.2008	-	.2009		.7
			-	
.2009	-	.2010		.8
			-	
		.2010		.9
			- .2009	
	-	.2010		.10
			-	
	- .2008/2007	.2009		.11
.2010/3/30		.2009		.12
.2009-2008		.2010		.13
			-	
	- .2009	.2010		.14
.(2009-2004)		.2010		.15
			-	
.2009/2008-2004/2003		.2010		.16
			-	
	- .2009	.2010		.17
		2009	.2010	.18

Tables

