

-

0

1999

¹1998

1997

1998-1995

1997

2.96

2.9

1997

5.8

2015

1998

²2025-1997

-1997

2001-1997

3

2001

. - .1998
:1997

- .1999
.1998

1
2

2001

1.80

1997

- .1997-

3

9.11 2010

13.64

1998

2025

4

4.95 2001

4.1

.2.2 2025

(Total Fertility Rate)

.3.1 2025

5.9

1998

(Crude Death Rate)

4.65 1998

1997

.3.26 2025

1997

%53

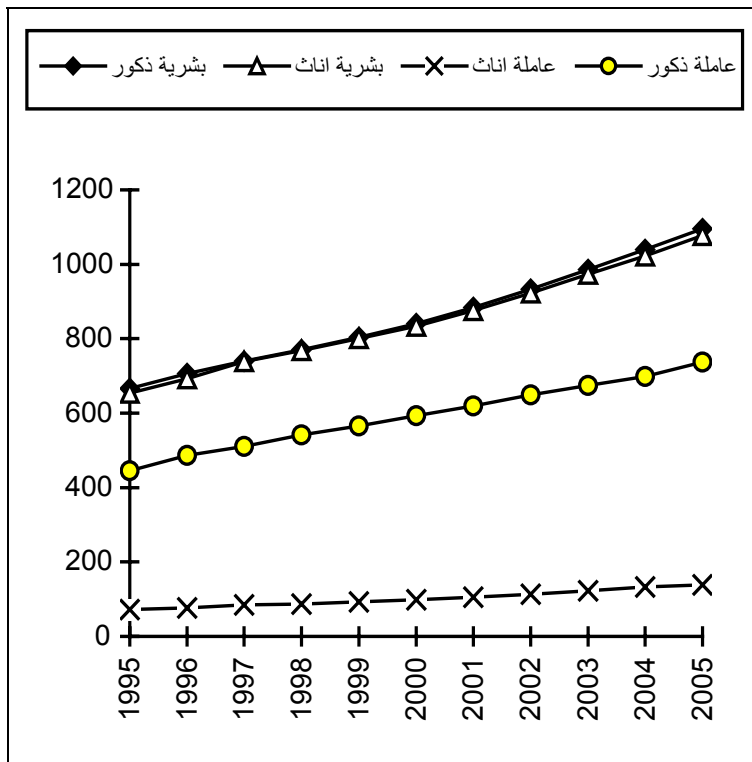
15

1.5

:

2000-1995

(15)



42

2005-1998

%

.%40

%52

%36

52

195

1998

2000

2025

%50

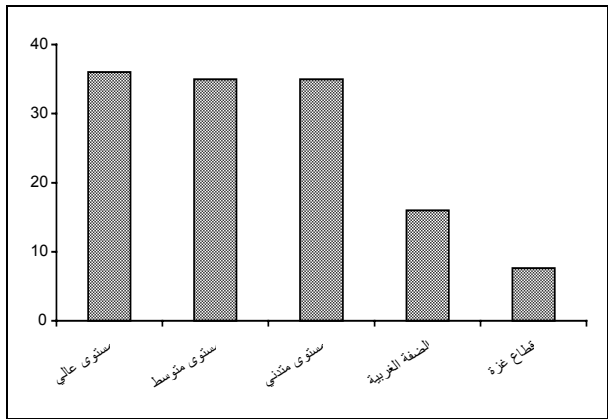
4

%50

50,000

.() .2000-1997

.2



)
(
.5
%8
10

1990

(1996

)

.1998

10

2000

98

2000

6

11

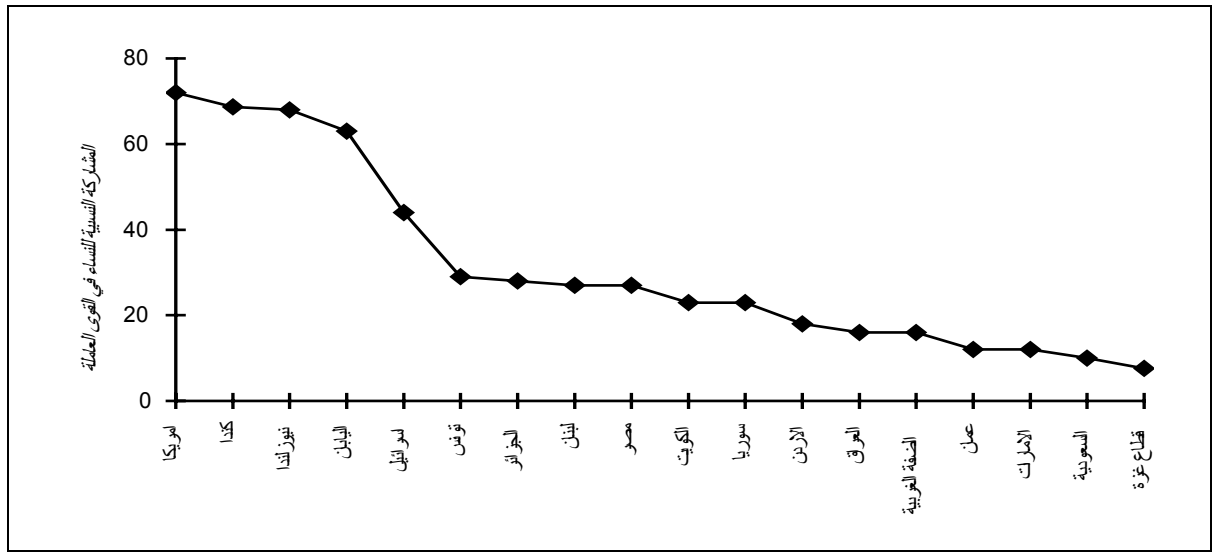
1998

5

:

(UNDP)

5



9.6%

19.1%

82.6%

62.0%

44.4%

15.4%

100

34

100

6

.3

.1990

1996

6

.1996

.1998

1

1-3

() :

() :

			%5.8	7	
	%0.9				%6.5
	%12.7	%22.2			
%5.0				%58.9	%66.3
		%27.5			

%80.1

%35

%8.8 %17.6

2-3

%14.7 %7.8

- .1998

- .1999

7

		%2.7		%11.6	.
	%34.1		.()	
	%46.2		%23.1		
				%10.7	
	1997				
(ISCO-88)					
60		20	118		
			%60	.	100
	:		()	
					.1
					.2
					.3
					.4
					.5
					.6

.8

3-3

%29.1

1998

%45.8

.1998

-

8

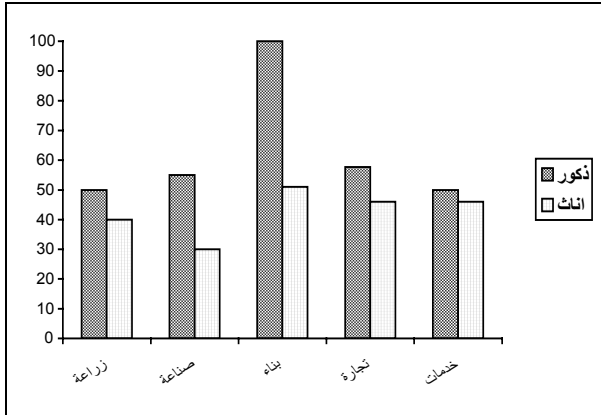
	%9.1	%16.0	
	%31.9	1998	%22.4
%13.4		%5.7	
160		1997	
	(ISIC-3)	25	
104		%71	100
	:		.1
			.2
			.3
			.4
)		.5
		(.6
		.9	
	.10		
			.3
		%80	9
		1998	10
		.1998	

%55

%70.5

%92.4

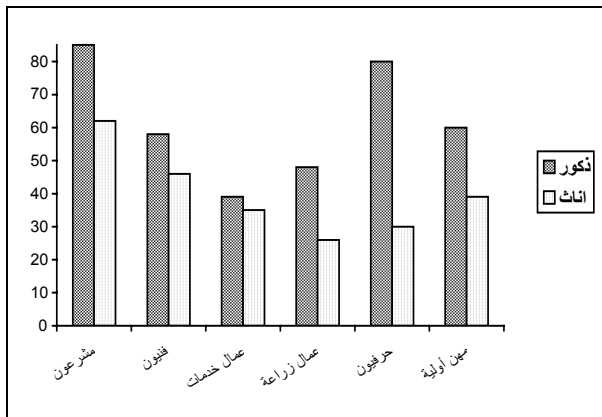
1998 :



%38

%54

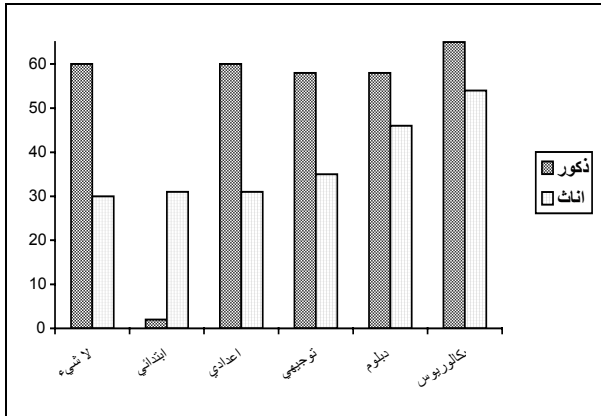
1998 :



%92

%80

1998 :



50

%

%80

%82

.1

15

100

1998

10

17

100

100

16

8

13.5%

1998

106%

()

125%

25%

86%

54%

16.5%

11.2%

13

6

8.8%

6

1.4%

22.8%

28.4%

.2

·
·
·

)

(

	.	-	.1998	-	.1999		.1
		:		.1998	-		.2
			.	-	.		
		-	.		.1997		.3
	.1997				.1998		.4
			.	-	.1997-		
	-)	.	:		.1996		.5
		.	-	.(1)		.(1995	
1996	-)	.	:		.1996		.6
		.	-	.(2)		.(
-	.1996	:		.1998			.7
-	.1997	:		.1998			.8
-	.1998	:		.1999			.9
					()		
	:			.1996			.10
	"	.			-	.1996	.11
				-	.		
		-	.1998				.12
		.		-	.	.1	

() 2000-1995 : :1

362.0	55.9	306.1	883.4	437.1	446.3	1995
394.3	61.0	333.3	934.3	462.3	472.0	1996
424.2	71.4	352.8	986.2	492.1	494.1	1997
456.5	72.9	373.6	1023.4	510.2	513.2	1998
458.2	74.2	384.0	1064.1	530.0	534.1	1999
489.1	77.7	411.4	1108.3	551.5	556.8	2000
155.0	16.5	138.5	437.9	217.3	220.6	1995
169.5	16.2	153.3	465.3	230.9	234.4	1996
171.6	13.7	157.9	493.3	247.3	246.0	1997
182.1	13.9	168.2	515.6	258.1	257.5	1998
200.7	18.6	182.1	540.0	270.0	270.0	1999
201.6	20.3	181.3	567.0	283.1	283.9	2000
516.8	72.4	444.6	1321.3	654.4	666.9	1995
563.8	77.2	486.6	1399.6	693.2	706.4	1996
595.8	85.1	510.7	1479.5	739.4	740.1	1997
638.6	86.8	541.8	1539.0	768.3	770.7	1998
658.9	92.8	566.1	1604.1	800.0	804.1	1999
690.7	98.0	592.7	1675.3	834.6	840.7	2000

15 :2

100	84.6	3.1	12.3	100	45.6	12.0	42.4	/
100	90.4	1.1	8.5	100	17.4	8.9	73.7	/
100	80.9	2.1	17.0	100	38.0	8.0	54.0	/
100	94.7	0.2	5.1	100	87.3	0.8	11.9	/
100	88.7	1.7	9.6	100	29.7	10.1	60.2	

1998 : :3

100	17.6	36.7	42.6	3.1	
100	5.8	68.6	13.9	11.7	
100	1.8	81.4	8.9	7.9	
100	8.8	37.7	44.7	8.8	

100	1.6	34.4	61.6	2.4	
100	0.4	91.1	6.4	2.1	
100	5.0	66.3	22.2	6.5	
100	80.1	4.3	15.5	0.1	
100	6.3	67.3	25.2	1.2	
100	2.6	97.4	-	-	
100	34.7	29.7	33.0	2.6	
100	-	100.0	-	-	
100	0.8	94.7	3.4	1.1	
100	27.5	58.9	12.7	0.9	
100	37.5	26.4	34.0	2.1	
100	5.8	68.4	15.5	10.3	
100	1.8	81.5	8.9	7.8	
100	10.3	37.2	44.0	8.5	
100	1.5	35.0	61.1	2.4	
100	0.5	91.9	5.7	1.9	
100	7.9	65.3	31.0	5.8	

1998 :

:4

100	14.7	85.3	100	7.8	92.2	
100	23.1	76.9	100	34.1	65.9	
100	2.7	97.3	100	11.6	88.4	
100	10.7	89.3	100	46.2	53.8	
100	1.9	98.1	100	9.6	90.4	
100	0.4	99.6	100	2.0	98.0	
100	2.1	97.9	100	6.3	93.7	
100	7.5	92.5	100	15.6	84.4	

1998 :

:5

100		31.9			68.1	
100		13.4			86.6	
100		0.5			99.5	
100		5.7			94.3	
100		1.0			99.0	
100		22.4			77.6	

100	13.2	86.8	
-----	------	------	--

1998 :

:6

50.0	40.0	50.0	
50.0	30.0	55.0	
100.0	51.2	100.0	
57.7	46.2	57.7	
48.9	46.2	50.0	
57.7	42.3	60.0	
76.9	61.6	84.6	
53.9	46.2	57.7	
38.5	35.3	38.5	
45.8	25.7	47.8	
76.9	30.0	80.0	
60.0	32.7	60.0	
60.0	38.5	60.0	
57.7	42.3	60.0	
57.7	30.0	60.0	
60.0	30.8	61.6	
58.3	30.8	60.0	
70.0	26.0	70.0	
55.3	34.6	57.7	
53.9	46.2	57.7	
61.5	53.9	65.4	
57.7	42.3	60.0	

()1998-1995 :

:7

121	17	104	47	4	43	74	13	61	1995
101	13	78	40	4	36	51	9	42	1996
100	12	88	36	2	34	64	10	54	1997
100	15	85	29	3	26	71	12	59	1998

1998 :

:8

--	--	--	--

2.3	0.5	2.5	1.3	2.4	1.1	0
23.5	0.9	25.9	19.1	6.4	21.8	6-1
22.1	2.6	24.2	29.6	13.2	33.1	9-7
28.9	10.3	30.9	31.3	24.3	32.8	12-10
23.2	85.7	16.5	18.7	53.7	11.2	++13
100	100	100	100	100	100	